

USER'S MANUAL



SMVR-64/128

THIS DEVICE COMPLIES WITH PART 15 OF THE FCC RULES. OPERATION IS SUBJECT TO THE FOLLOWING TWO CONDITIONS: (1) THIS DEVICES MAY NOT CAUSE HARMFUL INTERFERENCE, AND (2) THIS DEVICE MUST ACCEPT ANY INTERFERENCE, RECEIVED, INCLUDING INTERFERENCE THAT MAY CAUSE UNDERSIRED OPERATION.

Note : This equipment has been tested and found to comply with the limits for a Class B digital device, pursuant to part 15 of the FCC Rules. These limits are designed to provide reasonable protection against harmful interference in a residential installation. This equipment generates, uses and can radiate radio frequency energy and, if not installed and used in accordance with the instructions, may cause harmful interference to radio communications. However, there is no guarantee that interference will not occur in a particular installation. If this equipment does cause harmful interference to radio or television reception, which can be determined by turning the equipment off and on, the user is encouraged to try to correct the interference by one or more of the following measures :

- Reorient or relocate the receiving antenna.
- Increase the separation between the equipment and receiver.
- Connect the equipment into an outlet on a circuit different from that to which the receiver is connected.
- Consult the dealer or an experienced radio/TV technician for help.

NOTE: THE MANUFACTURER IS NOT RESPONSIBLE FOR ANY RADIO OR TV INTERFERENCE CAUSED BY UNAUTHORIZED MODIFICATIONS TO THIS EQUIPMENT. SUCH MODIFICATIONS COULD VOID THE USER'S AUTHORITY TO OPERATE THE EQUIPMENT.

USER'S MANUAL

SMVR-64/128



Before the Main Operations

Features

Long time recording function

Can be recorded Max',1090minutes(64MByte)/2180minutes(128Mbyte)

Play-back of MP3 music files

Can be play-back for MP3 music files

Timer recording function

Can be set timer recording function for Max' 255 minutes

Alarming function

Can be adjusted alarming function for Max' 255 minutes

File move function

Can be moved saved message to other folder

File storage function

Messages can be stored in each files(A/B/C/D/L)

Max' 99 files in A/B/C/D folders each and 20 files in L folder

Data storage function

Can be down-loaded PC's data or files to your voice recorder and also up-loaded data saved in your voice recorder to other PCs

Can be down-loaded data or files for Max' 64MB or 128 MB, depending on capacity of Flash memory.

MP3 files should be saved into MP3 folder

File conversion function

File format can be converted by X-SHELL(voice & MP3 manager)

Automatic program up-date function

Can be up-dated for X-SHELL.

files protection function

Important files(messages) can be stored in L folder

(details refer to clause for storage of saved important messages)

(messages or files from L folder can not be erased)

Selection of recording mode

You can choose 2 recording mode(HQ/LQ) when you record the message(s).

(HQ mode: good quality sound but recording time is shorter than LQ mode)

(LQ mode: Recording time is 4 times longer than HQ mode).

Auto power off function

If the device is not in use more than 1 minute, power is automatically off.

Recording Remaining time display

During recording message, you can check remaining recording time.

(During recording message, press "FOLDER/REPEAT button to check recording remaining time)

Repeat play-back function

During play-back, you can listen A B selected section repeatedly.

Repeat play-back for MP3 music file

Playback of MP 3 player is set for all songs repeat-playback,

if a song is set for repeat-playback, only a selected song playbak repeatedly.

Monitor Function

During recording, message can be monitored by earphone.

Recording message can be monitored by earphone during recording. connection to a external appliance(s)

By connecting whit supplied AUDIO CABLE between voice recorder and external appliance(s), It's possible to record information from external appliance(s) into voice recorder and to record them back into those external appliance(s).

Level Display Function

Level for play-back and recording are displayed on LCD.

Voice Operated Recording Function

If VOR is set during recording, the recording stops automatically when there is no sound or voice.

It makes the recording time to the maximum.

Scan Search Function

The unit can playback all files for first 5 sec' in existing folder.

Pause Function

Can pause during playback or recording.

(Unit turns to power off mode automatically on or before 15 minutes.)

Set by MENU Mode

Additional function can be set by MENU mode.

USB PC Interface Function

By connecting with USB cable, can be down-loaded or up-loaded from PC easy and fast.

Hold Function

During play-back or recording, can be protected unwanted operation of voice recorder.

Ultra miniature sized Device

Smallest size in the world and easy to carry.

EL BACK LIGHTING

EL back Lighting is equipped in voice recorder so that easy to check operation status under dark place and in night.

Voice E-mailing Function

By using VOICE MANAGER PROGRAM, can be e-mailed recorded message.

Equalizer Function

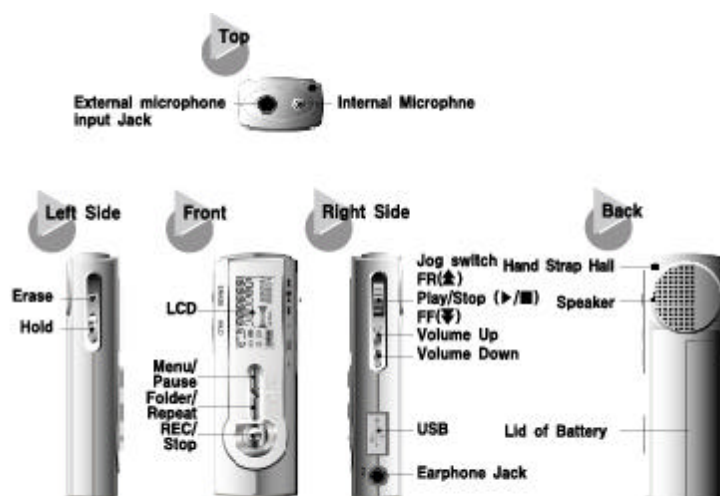
You can enjoy musics with different sound effects

(POP, CLASSIC, JAZZ, ROCK mode) when playback of MP3 music files

When play-back of MP3 music files, you can adjust level of bass & treble you desired.

By using VOICE MANAGER PROGRAM, you can cut, paste, move, add for the files.

Location of Controls



LCD DISPLAY



Inserting / Replacing the Batteries

It should be done in STOP position.

1. Open the battery cover in the direction of symbol of arrow by pushing downwards



2. Insert one "AAA" Battery(LR-03) into the battery compartment with correct polarity.

Power Requirements : Dry Cell LR03(size AAA or UM -4)

3. Press "REC/STOP" button to check the remaining battery capacity



full Charged



half-way Charged



little Charged



Non-Charged
(Required replacement of New Battery)

Battery Life Time

Battery Type	MODE	Recording	Play-back by Speaker	Play-back by Earphone
"AAA" size Alkaline Battery	HQ MODE	Approx' 7 hours at position of volume level 13	Approx' 6 hours at position of volume level 13	Approx' 7 hours at position of volume level 13
	LQ MODE	Approx' 4.5hours at position of volume level 13	Approx' 7 hours at position of volume level 13	Approx' 8 hours at position of volume level 13
	MP3 MODE		Approx' 5 hours at position of volume level 13	Approx' 6 hours at position of volume level 13

To start operation of voice recorder with MP3 player , set the HOLD swith to off position first and press " REC/STOP" key to turn power on.

VOICE RECORDER OPERATION

Recording

Recording the messages

Press "REC/STOP" button once

To stop recording, press " REC/STOP"button once again.



By pressing "REC/STOP" button and turn the the power on



Press " FOLDER/REPEAT" button to operate voice recorder mode from

MP3 player mode.



By pressing "REC/STOP" button, voice recorder start recording as indicated figures

Selecting folder and recording

You can select any folder(a folder among A/B/C/D) by pressing "FOLDER/REPEAT" key and start recording

Max' 99 files can be stored into each folder

Recording can not be done in L folder

After recording file in a folder, you can transfer file to a other folder by using MENU mode.

Recording the message to next file

If you want to record the message to next file No during recording, press "FF" key once.



If you press " FF" key during recording the message



Recording shall be continued in next file number.

Monitoring message during recording

You can monitor message by using earphone during recording message.

Pause during recording

To pause recording, press " MENU/PAUSE" for more than 1 second

To release pause, press " MENU/PAUSE" button for more than 1 second.



If you press "MENU/PAUSE" button during recording



PAUSE is displayed on LCD

Timer Recording

Timer (preengaged) recording can be done through "SET P-REC" from MENU mode.

Can be set Max' 255 minutes for timer recording(time adjust can be done by "FF/FR" key)

To cancel timer recording, follow same procedures for timer recording and choose OFF



Press " MENU/PAUSE" button 4 times.



And press " PLAY/STOP" button.



Set the time you want to start recording by adjusting " FF or REW " button



Press "PLAY/STOP" button. If you want to cancel timer recording, select OFF and press "PLAY/STOP" key.



After above procedures, symbol for P-R appears on LCD



Timer recording shall be started in set time

Storing Important Message(s)

If you want to store important file(s) among saved file(s) in A/B/C/D/ folder, You can store import file(s) in L folder after recording file in A/B/C/D folder first.

Files in L folder can not be erased

Max' 20 files can be stored in L folder.



By using "FF/REW" button, select the files you want to move to L folder.



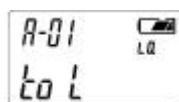
After file(s) is selected, press "MENU/PAUSE" button 3 times.



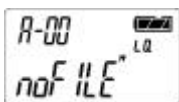
Press "PLAY/STOP" button again.



By using "FF/REW" key, select L folder as shown figure.



Press "PLAY/STOP" button one more time.



Selected file(s) has moved into L folder



Since selected file(s) moved into L folder, there are(is) no selected

folder in ex-folder.

Since all folders (A/B/C/D) except L folder can be erased, it's recommended that important message is stored in L folder and upload to PC.
it's possible to erase file by PC program(X-SHALL).

Playback

Playback

Press " REC/STOP" button to turn power on and set the HOLD switch to off position first.

Press " PLAY/STOP" key(/) once and file(message) number, play-back sign, playback time is displayed on LCD.



Press " PLAY/STOP" key



If you press " PLAY/STOP" key again



The unit turns to STOP mode

Volume control is adjusted by VOLUME buttons



To turn the unit up, press VOL+ button.



To turn the unit down,press VOL – button

Press play/stop button(/) to stop.

Fast Forward and Rewinding during Playback

Fast Forward

During playback , press " FF" button to right position for more 1 second.



During playback , if you press and hold " FF" button to right position for more 1 second,



Playing time is increasing and moving to front part of the existing file.

- * If you stop holding from "FF" button, playback will resume from the point you held "FF" button back.

Fast Rewind

Press " REW" button to left position for more 1 second



During playback , if you press and hold " FR" button to left position for more 1 second



Playing time is decreasing and moving to rear part of the existing file.

- * If you stop holding from "FR" button, playback will resume from the point you held "FR" button back.

Playback of Next File

During playback, you can listen to next file by pressing "FF" key to right position.



If you press "FF" key to right during playback,



File number changes to next file number and next file will playback.

Playback of previous File

During playback, you can listen to previous file by pressing "FR" key to left position



If you press "FR" key to left during playback



File number changes to ex-file number and previous file will playback

Pause during Playback

To pause unit, press " MENU/PAUSE" button for more 1 second.



If you press " MENU/PAUSE" button for more 1 second,



"PAUSE" appears on LCD and the unit pauses.

To resume playback, press "MENU/PAUSE" button once again for more 1 second

Repeat Function of Voice Recorder

During playback , press "FOLDER/REPEAT" key once where you want to start repeat function



During playback, if you press " FOLDER/REPEAT" key at the point you want to start repeat function.



Symbol " " appears on LCD and will continue playback



Press " FOLDER/REPEAT" key where the point you want to stop repeat function." Symbol " " appears on LCD and playback repeatedly.

*Above figure on LCD indicates that during playback, repeat function starts 12 sec' from playback of number 1 file in A folder and ends 1 min' 23 sec' from playback .

To release repeat function, press "FOLDER/REPEAT" key one more time.

(If you press "PLAY/STOP" key, unit stops playback function.)



During repeat-playback



If you press " FOLDER/REPEAT" key , repeat-playback stops and resume playback



If you press "PLAY/STOP" key , unit stops.

Repeat Function of MP3 player

MP3 player is programmed with all songs repeat playback.

If "FOLDER/REPEAT" key is pressed, only a selected tune(song) playback repeatedly.



During playback of MP3 player, if you press " FOLDER/REPEAT" key,



Symbol " " appears on LCD and only a selected tune(song) playback repeatedly.

Scan Playback

At a position of stop ,and if you press " PLAY/STOP" key for more 1 second, unit will playback all files for first 5 sec' in existing folder.



At a position of stop ,and if you press " PLAY/STOP" key for more than 1 second,



unit will playback all files for first 5 sec' in existing folder

During scan-playback, if you want to playback existing file, press " FOLDER/REPEAT" key once



During scan-playback, if you want to playback existing file,



Press " FOLDER/REPEAT" key.

To stop scan-playback, press " PLAY/STOP" key.



To stop scan-playback,



Press " PLAY/STOP" key

Erase

Erasing a file

Select a file you want to erase and press " ERASE" button for more than one second.

Selected message will playback for first 5 seconds and "ERASE" flashes on LCD..

By pressing " ERASE" button again, selected file will erase completely.

If you want to cancel erase of file, press any buttons except " ERASE" button.



At a stop mode(position), select file you want to erase by using "FF/FR " key.



Press " ERASE" key for more 1 second and "ERASE" will appear on LCD



If you want to erase a file, press " ERASE" key.



If you do not want to erase a file, press any buttons except " ERASE" button.

After a file is erased, file's number will change.

Ex) If there are 9 files and will erase 5th file.

File No 1 to 4 are same as before ,but file No 6 to 9 shall be changed to file No 5 to 8.

Erase all file in a folder

At a stop mode(position), select folder you want to erase by using "FOLDER/REPEAT" key.

Press " ERASE" button and " REC/STOP" simultaneously and "ERASE" and selected folder

And folder will flash on LCD.

By pressing " ERASE" button, all files in a selected folder will erase completely.

To stop erasing selected folder, press any buttons except " ERASE" button.



At a stop mode(position), select folder you want to erase by using "FOLDER/REPEAT" key.



Press " ERASE" button and " REC/STOP" simultaneously and "ERASE" and selected folder will flash on LCD.



If you want to erase a selected folder, press " ERASE" button



To stop erasing selected folder, press any buttons except " ERASE" button.



If you try to erase any files in L folder , "don't "appears in LCD and It's impossible to erase any files in L folder.

~~It's~~ It's impossible to erase any files in L folder

Erase a MP3 file

Select a MP3 file you want to erase and press "ERASE" button for 1 second.

Selected MP3 file will playback for first 5 seconds and "ERASE" will flash on LCD

To erase selected MP3 file, press "ERASE" button again.

If you do not want to erase selected MP3 file, press any button except "ERASE" button.



At a stop mode(position), select a file you want to erase by pressing "FF

FR" button



Press "ERASE" button for 1 second until "ERASE" appears on LCD.



If you want to erase a selected file, press "ERASE" button.



If you do not want to erase selected MP3 file, press any button except "ERASE" button.

After a file is erased, file's number will be changed.

ex) If there are 9 files and will erase 5th file.

File No 1 to 4 are same as before ,but file No 6 to 9 shall be changed to file No 5 to 8

ADDITIONAL FUNCTIONS OPERATION

Setting Additional Functions

Setting Alarm

Press "MENU/PAUSE" button once and "SET ALARM " appears on LCD.

Press " PLAY/STOP" button

Press "FF" or "REW" button to set time you want to start alarm function

(Max' 255 minutes can be set).

To stop alarm function, select OFF.

To confirm, press " PLAY/STOP" button.

Symbol of alarm appears on LCD and alarm function is memorized.

(Do not set alarm function and timer recording at the same time.

In this case, timer recording has priority over alarm function.)



Press "MENU/PAUSE" button once and "SET ALARM " appears on LCD.



Press "PLAY/STOP" button



Press "FF" or "REW" button to set time you want to start alarm function (Max' 255 minutes can be set).



Press "PLAY/STOP" button. To stop alarm function, select OFF



Symbol of alarm appears on LCD and alarm function is memorized.



To stop alarming function in set time, press any buttons

Setting Recording Mode

Press "MENU/PAUSE" button twice and "SEt Hq -Lq " appears on LCD.

press "PLAY/STOP" button.

Select recording mode by pressing "FF" or "REW" button

(HQ mode : good quality sound but recording time is shorter than LQ mode

(LQ: recording time is 4 times longer than HQ mode)

Press "PLAY/STOP" button again.

Selected recording mode (HQ or LQ) is displayed on LCD

and recording mode is memorized.



Press "MENU/PAUSE" button twice to display "Hq -Lq" is displayed on LCD.



Press "PLAY/STOP" button.



Designate recording mode(HQ orLQ) by using "FF" or "LQ" keys.



Select recording mode by pressing "PLAY/STOP" button



Press "PLAT/STOP" button.Selected recording mode (HQ or LQ) is

displayed on LCD and recording mode is memorized. When recording, the unit record by selected recording mode.

moving a file to a Different folder

By pressing "FF" or "REW" key, select a file you want to move.

Press " MENU/PAUSE" button 3 times and "SET MODE" appears on LCD.

Press " PLAY/STOP" button.

Designate desired folder for a selected file by pressing " FF" or "REW" key.

Press "PLAY/STOP" button one more time.

Selected a file has transferred to a new folder.



By pressing "FF" or "REW" key, to select a file you want to move.



Press "MENU/PAUSE" button 3 times and"SET MODE"appears on LCD



Press " PLAY/STOP" button.



Designate a desired folder for a selected file by pressing " FF" or "REW"

key.



Press " PLAY/STOP" button.



Selected a file has transferred to a new folder.

*For example, assuming that there is a file in a folder and file is transferred to a different a folder.

After transferred a file, "no FILE" is displayed on LCD.

Timer Recording

Press " MENU/PAUSE" button 4 times and " SET P-REC" appears on LCD.

Press "PLAY/STOP" button.

Press "FF" or "REW" button to set time you want to start timer recording (Max' 255 minutes can be set).

To stop timer recording, choose OFF mode.

Press " PLAY/STOP" button one more time.

Icon of timer recording appears on LCD and timer recording is memorized.

Do not set timer recording and alarm function at the same time.



Press " MENU/PAUSE" button 5 times and " SET P-REC" appears on LCD



Press " PLAY/STOP" button.



Press "FF" or "REW" button to set time you want to start timer recording.



Press " PLAY/STOP" button on more time. To stop timer recording, choose OFF mode.



Icon of timer recording on LCD and alarm function is memorized.



Timer recording will be operated in set time.

Setting VOR

Press " MENU/PAUSE" button 5 times and " SET VOR" appears on LCD.

Press "PLAY/STOP" button.

Designate ON mode by pressing " FF" or "REW".

When VOR-ON, no sound or level of sound is weak, unit will pause.

To stop setting for VOR function, designate OFF mode.

Press "PLAY/STOP" button one more time.

" VOR " appears on LCD and VOR function is memorized.



At a stop mode(position), Press " MENU/PAUSE" button 5 times and " SET VOR" appears on LCD.



Press "PLAY/STOP" button



Designate ON or OFF by pressing "FF" or "REW" key.



Press "PLAY/STOP" button one more time.To stop setting for VOR function, designate OFF mode.



" VOR " appears on LCD and VOR function is memorized.



When VOR-ON, no sound or level of sound is weak, unit will pause.

Selecting Voice recorder and MP3 player

Select voice recorder or MP3 player by pressing "FOLDER/REPEAT" button.

After replacement dry cell(battery), the unit will start MP3 mode



At a stop mode(position), press " FOLDER/REPEAT" button,



The unit can be moved into each folder(A/B/C/D/L/MP3 folders)



Press " FOLDER/REPEAT" button 5 times and " MP3" appears on LCD.



To playback MP3 music files, press " PLAY/STOP" button.

To stop MP3 music files, press " PLAY/STOP" button one more time.

To pausu, press " MENU/PAUSE" button for more than 1 sec'.

To resume playback, re -press " MENU/PAUSE" button for more than 1 sec'

You can operate equalizer function(Digital Signal Processor) when you enjoy MP3 music.



At a position of MP3 player,



Press " MENU/PAUSE" button once.



Every time "FF/FR" is pressed, each DSP mode is changing to CLASSIC/POP/ROCK/JAZZ/OFF mode. After designate a DSP mode, press " PLAY.STOP" key and DSP mode is memorized.

At a position of equalizer's OFF mode, level of treble and bass can be adjusted by user.



At a position of MP3 player mode



To adjust TREBLE, press "MENU/PAUSE" button once and press "PLAY/STOP" button



Level of TREBLE can be adjusted by "FF" or "ER" key .After adjusting level of TREBLE, press " PLAY/STOP" button.



Press " MENU/PAUSE" 3 times and "bASS" appears on LCD.



Level of BASS can be adjusted by "FF" or "ER" key. After adjusting level of BASS, press " PLAY/STOP" button

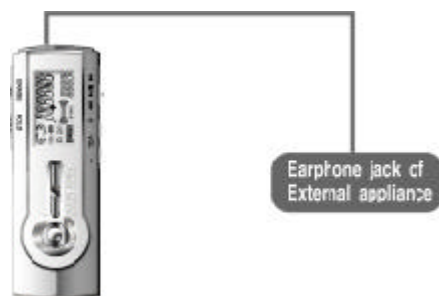
connecting the unit to an appliance

By connecting supplied AUDIO CABLE between voice recorder and external appliance(s),

It's possible to record information from external appliance(s) into voice recorder and to record them back into those external appliance(s).

Recording message from external appliance to voice recorder

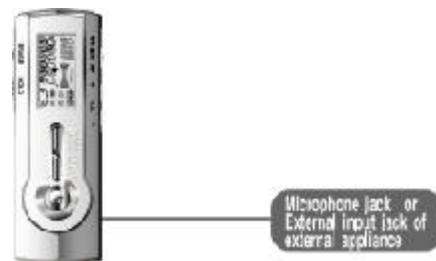
Connect supplied audio cable between Mic' input jack of voice recorder and earphone jack of External appliance and start recording. Connect supplied audio cable between Mic' input jack of voice recorder and earphone jack of External appliance and start recording.



Recording message to external appliance

Connect supplied audio cable between earphone jack of voice recorder and microphone jack or External input jack of external appliance and press " REC" button

of external appliance and "PLAY/STOP" button of voice recorder, at the same time.



- * To prevent failure of recording, try test first.
- * Adjust volume level of external appliance to prevent distorted recording or poor recording level.

Recording telephone conversation

Can be recorded telephone conversation after connection with supplied telephone adaptor.

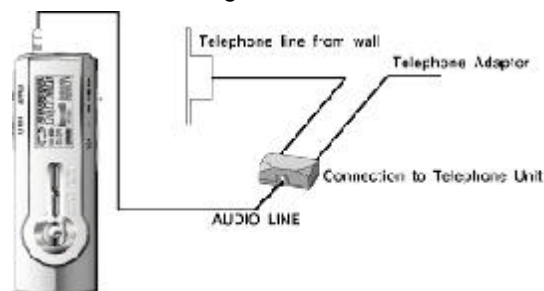
However digital telephone's recording is impossible.

Connect supplied audio cable between Microphone input jack of voice recorder and audio output jack of telephone adaptor.

Connect supplied telephone cord (30 Cm) between telephone unit and telephone adaptor.

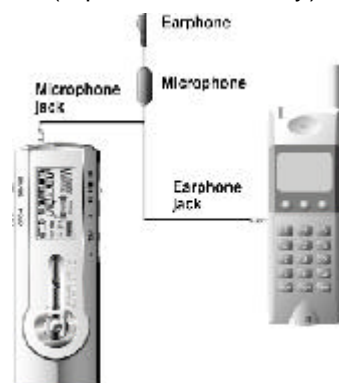
Connect telephone line from wall to telephone adaptor

Press "REC/STOP" button for recording



Recording Mobile -phone Conversation

Connect " cellular ear-mic" (optional accessory) as figure below.



*It's recommended that recording of telephone conversation should be done after getting contents from the party.

TROUBLESHOOTING & CARE

TROUBLESHOOTING

No display on LCD

Dry battery is exhausted ?

Replace with new dry battery

Check the battery's polarity

Place dry battery to battery compartment with correct polarity

Recording function does not work

Hold switch is on position ?

Set the HOLD switch to off position

Check the file number, existing file number is 99
or capacity of applied memory

is fully used (occupied) ?

Erase file(s) or transfer file(s) to other folder.

Dry battery is exhausted ?

Replace with new dry battery

Playback does not work

Hold switch is on position ?

Set the HOLD switch to off position

No recorded message in a folder ?

Check the recording file number

Dry battery is exhausted ?

Replace with new dry battery

No sound from Speaker

Volume level is nearly 0 position ? Adjust volume level

Is earphone connected to earphone jack ? Disconnect earphone to earphone jack

No sound from Earphone

Volume level is nearly 0 position ? Adjust volume level

Is earphone fully connected to earphone jack ? connect earphone to earphone jack fully

Cautions

Do not drop the unit and give it a shock. It could cause troubles.

Do not place the unit at the following condition and/or places ;

-. Where it is full or high temperature about 60 degrees (60 °C)

- Near the heater, direct sunlight or from any type of heat sources.
- In a car with windows closed, especially in summer.
- At a heavy dump place like a bathroom.
- At a dusty places

Any excess force on LCD could cause damages to it and to overall LCD function.

A magnetic card such as credit card or subway(MTR) communication ticket

May not be working any longer once it's placed on or close to the speaker.

The seller holds no liability for any damages caused by misuse of the unit, and any claims from the third party.

Data from stored in the unit may erase resulting from unexpected cases.

When connect the unit with computer, be careful to get electric shock.

Printed letters on the unit may wear away resulting from pressure and frequent touches.

Wearing the unit on arm with supplied band(optional accessory) may cause trouble for blood circulation.

Wearing the unit with supplied neck lace may cause trouble by catching on door or elevator.

- * The seller holds no liability for any lost messages which are caused by repair or any other troubles.

Caution on Using Dry Battery

Do not heat, disassemble or place it into fire.

alkaline solvent may harm skin, eyes and cause a fever.

When above case, wash your skin or eyes with clean water and see a doctor immediately.

Do not use different type of battery together

Remove the battery when unit will not be used for a long time.

Insert dry battery by matching the + and - on the battery to the diagram inside the battery compartment.

inserting dry battery with wrong polarity may cause trouble to unit.

Precaution for Safety

Do not repair, open or remodel the unit.

Remove dry battery when there is smoke in the unit.

Do not use where electronic device's operation is prohibited ,especially in airplane.

Do not remove screws to disassemble the unit and do not touch anything inside the unit to avoid accidents.

Remove dry battery when there is smoke in the unit.

Do not use the unit in airplane or restricted area.

Keep away the unit from children for eating or

If water gets inside the unit, remove the dry battery and consult your dealer.

never place heavy objects on this unit.

USING THE RECORDER WITH A PC

How to PC connection

X-SHALL is a program that recorded file of unit can be up -loaded and classified and etc...

After connection between USB jack of computer and USB jack of the unit

Recommend System Requirements

OS : MS Windows 98/SE/ME/XP/2000

More than x 4 Speed

MEMORY: More than 64MB

HDD: More than 4MB

SOUND CARD: Compatible with Sound Blaster 16

Key Functions

The function of edit and save the messages of Voice Recorder into PC

The function of edit the name of recorded messages in your PC

The function of manage the sound files as the subject of categories

The function of editing

The function of sending the saved messages in PC by e -mail(Voice Mail)

The playback function of the saved messages in your PC.

The function of Downloading MP3 files.

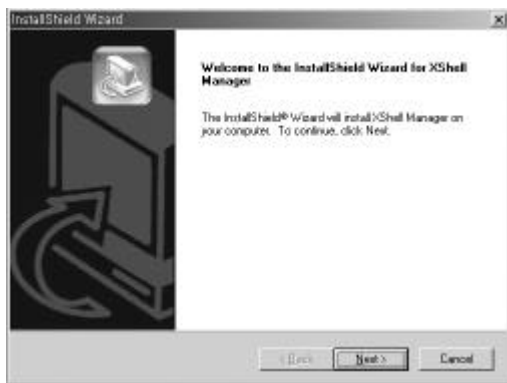
The function of converting SC4 to WAV and TVF to WAV.

X-SHELL MANAGER INSTALLATION

How to install X-SHELL

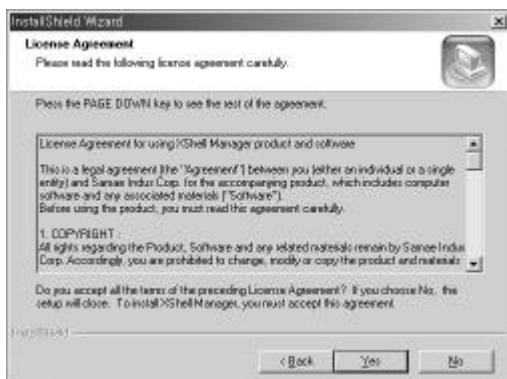
Insert installation CD into CD-ROM drive in your PC.

SETUP

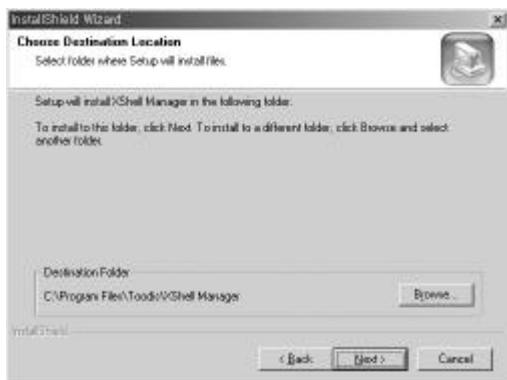


Click the "NEXT" button

Selecting the install language



License Agreement. Click "Yes" button.



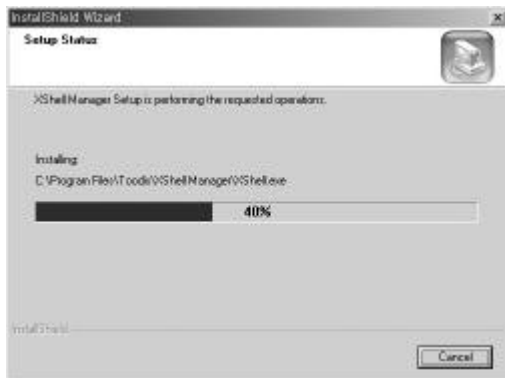
Select the specified destination directory, and click "NEXT" button.



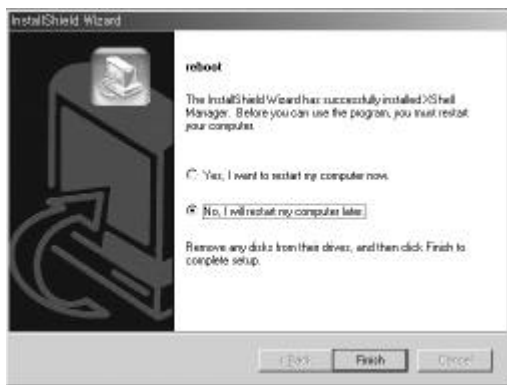
Select the destination folder, and click "NEXT" button.



To start copying files, Click "NEXT" button.



Press "Finish" button to complete installation of Install Shield Wizard



To reboot, Select "Yes, I want restart computer now." And click "Finish" button.
Complete Installation.

After rebooting, connect Voice Recorder
with USB port of your PC. The drive will be installed automatically.
(only for the first time)

Note: When you connect Voice Recorder with USB port of your PC,

1. In case batteries are inserted, Make sure Voice Recorder should be turn on the power,
then connect with USB port.
2. In case batteries are not inserted, Connect Voice Recorder with USB port directly.
3. In the state of Playback or Recording, You have to stop the playback or Recording.
Then connect Voice Recorder with USB port.

Be sure to follow above instructions. If not, Voice Recorder might be not operated properly.

X-SHELL USER GUIDE WINDOWS & KEY

How to use X-SHELL

X-SHELL MANAGER WINDOW



The Name of each part of X-SHELL MANAGER WINDOW

A : MAIN CONTROL WINDOW

B : MP3 & VOICE RECORDER PLAYER

C : MP3 & VOICE RECORDER CONTROL WINDOW

D: MP3 & VOICE RECORDER SAVED FILE WINDOW

E: MP3 & VOICE RECORDER FILE STATUS WINDOW

F: The upper/higher FOLDERS of COMPUTER

G : COMPUTER FOLDER CONTROL WINDOW

H: The lower Folders of COMPUTER

A : MAIN CONTROL WINDOW



1. FILE MENU

CHANGE LANGUAGE TO: It is possible to choose the language for X-SHELL (ENGLISH, KOREAN).

EXIT: Exit X-SHELL

2. TOOLS MENU

FORMAT FLASH DISK: SMVR turn to be a pre-setting value(factory default value).

SOUND EDIT: It is possible to edit the saved files.

SMAT UPDATE: X-SHELL is upgradeable.

CONFIG: Setting up the circumstances of X-SHELL.

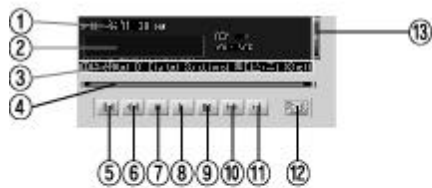
3. HELP

ON-LINE HELP: Confirmation about the HELP file and upgrade(Version-up) situation on line(on the web).

ABOUT X-SHELL: Display X-SHELL's current version.

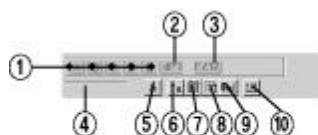
B : MP3 & VOICE RECORDER PLAYER

The each part of playing status: Display the playback status of TVF,SC4, MP3 and file format.



1. Displays the total playback time of the playing time.
2. Displays the audio spectrum of the playing file.
3. Displays the name of the playing file.
4. Displays the total playback time of playing time as the bar,
5. Move to previous message of the playing file.
6. Rewind/Backward the fore part of the playing file..
7. Stop the playing file.
8. Playback the file.
9. Pause the playing file temporarily.
10. Fast forward the rear part of the playing file.
11. Move to next file of the playing file.
12. File combination : combine two files into one file.
13. Control the volume.

C : MP3 & VOICE RECORDER CONTROL WINDOW



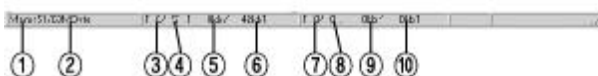
1. MP3 & VOICE RECORDER TVF,SC4 FOLDER
2. MP3 & VOICE RECORDER MP3 FOLDER
3. MP3 & VOICE RECORDER DATA FOLDER

- D: MP3 & VOICE RECORDER SAVED FILE WINDOW
- The selected folder's files will be displayed.
- It displays PLAY LIST



At POP-UP menu, select copy menu by existing PC folder

E: MP3 & VOICE RECORDER FILE STATUS WINDOW



- ### 1. Remaining Memory Capacity

It displays the remaining memory capacity

2. Total Memory Capacity

It displays the total memory capacity.

3. The number of selected SMVR folder

4. The total number of selected SMVR folder

5. Capacity of selected SMVR folder

6. Total capacity of selected SMVR files.

7. Number of selected PC folder

8. Total Number of selected PC folder.

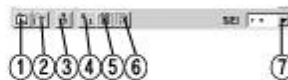
9. Capacity of selected file among selected PC folder

10. Total capacity of selected PC folder

F : COMPUTER UPPER(HIGHER) FOLDER



G : COMPUTER FOLDER CONTROL WINDOW



1. Move to higher Folder.

Move to higher(upper) folder of selected folder

2. Create new folder

3. Remove and cut the file

Remove the selected file.

4. View large Icons

It displays the selected folder's icons as large.

5. View details

It displays the selected folder's file name, file extension, file size, modifi

6. Refresh

7. Specify file filter.

You can select the file extension of what you want of selected folder.

H: The Selected Higher Folder of COMPUTER



To display POP-UP menu, select the file you want to copy and press right button on the PC's mouse

At POP-UP menu, select copy menu by existing PC folder

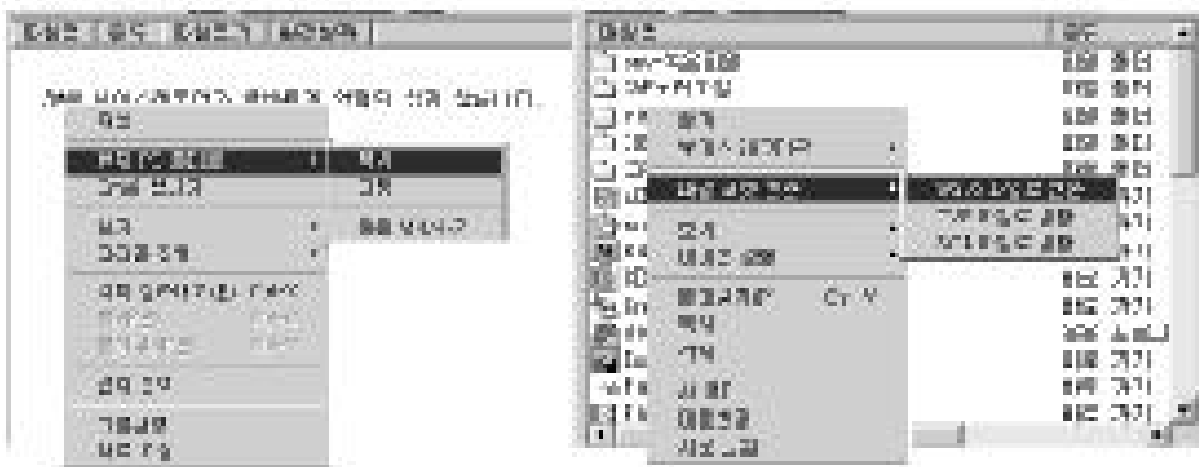
File uploading and downloading

*Can upload and download voice files, data files and MP3 files between PC and Voice Recorder.

(But MP3 files only can be downloaded to Voice Recorder)

*LQ Voice file recorded for 1 hour can be transmirated at 1.5 second.

*The fastest transmissin rates(About 7Mbps)



<p>The selected folder's files will be copied to the present folder on PC (copied from Voice Recorder to PC)</p>	<p>The selected file will be changed to Wave file, TVF files and SC4 files (Changed file at the present folder on PC)</p>
--	---

Converting File Format

Voice Files recorded (* .SC4 , * .TVF) and MP3 files can be Changed each other

TVF<->WAV , TVF<->SC4 , SC4<->WAV , MP3<->TVF , MP3<->SC4 , MP3<->WAV

*Remarks

TVF files : 1) Voice files on LQ mode, 8Kbps sampling rates,8Khz,16bit,mono voice file

2) Highest compression rates, voice for 1 hour can be recorded for 3.6MByte

SC4 files : 1) Voice files on HQ mode, 32Kbps sampling rates,8Khz,16bit,mono voice files

2) Voice Quality is Better than TVF files

Data storage function

Any files on PC can be stored to data folder on Voice Recorder



Must be stored after pressing data folder

Voice E-mailing

Sending Voice files to E-mail on XShell Manager Program directly.

Anybody can hear Voice files sended by XShell Manager Program as MS -ADPCM Format



By pressing E-mailing Icon, Outlook Express Program will open and send the selected file



ITEM SPECIFICATION

SPECIFICATIONS

Model No.	SMYR-64(64M)	SMYR-128(128M)
Recording Time	1090 Min	2180 Min
Maximum MP3 File	Maximum 16 File	Maximum 32 File
Memory Medium	Built in Flash Memory	
Dimension	28.5 x 84.4 x 17.5(mm)	
Weight	29.5 g(without battery)	
Power Source	1.5V (1.5V x 1AAA Alkaline)	
Battery Lifetime HQ Recording Mode	About 370 Min at Speaker Playback at Volume 13 About 420 Min at Recording mode Volume 13 About 440 Min at Earphone Playback at Volume 13	
Maximum Mesage Number To Record	99 in each Group,4Group	
Maximum Mesage Number To Lock-File	Maximum 20 File	
Maximum Output Power	Earphone 5mW at THD 10%, 16~32 Ohm Speaker 65mW at THD 10%, 8 Ohm	
Recording/Playback Frequency Response	300Hz~3,500Hz	
Transforate (usb option)	4.8Mbps ~ 5.6Mbps	
Recording Source	Built-In Omnidirectional Electric Condenser Microphone	
Input	Audio Analog In(-60dB), 3.5ϕ	
Output	Earphone(Mini Plug/Stereo)IMP over 16Ohm, 3.5ϕ	
MP3 File Playable	Up to(support) 224kbps	

Be based on 4MB of each song.

Warranty Information

1. This product have been carefully tested and passed our strict inspection and quality control(QC).
2. If this product fails to operate properly within the specified warranty period, we will repair it at free of charge.
3. Due to abnormal use, misuse and accident, it should be charged of actual expense. Even if within the specified warranty perod.

4. This warranty has validity only in domestic.
5. This warranty is effective 6months from the purchasing date.
6. Please fill out this form and pay special attention to don't lose.
7. If this product fails to operated properly,
please contact the after-sale service center or store where

Manufacture : TooDis. Co.Ltd.,
#212-22, MEATAN-DONG, PALDAL -GU, SUWON-CITY, KYUNGKI -DO, KOREA
TEL. 82-31-212-4031~2 FAX. 82-31-212-4148
HOMEPAGE <http://toodis.com>

customer purchased.

Below cases should be charged of actual expense.

The damage or break down due to misuse, improper operations.

The damage or break down due to unauthorized repairs or reconstruction.

The damage or break down due to accident, fire, flood and or other acts of God.