

POWER USERS GUIDE

Digital Voice Recorder



1000:1 PC INTERFACE

Contents

Before the Main Operations

- Key Features
- Checking Each Part's Name
- Installing Batteries
- Getting the Voice Recorder Started

Voice Recorder Operation

- Recording Messages
 - Recording a message into the selected folder
 - Recording a message as a next message number
- Listening to the current recording message
- Pausing on Recording
- Timer Recording
- Locking an Important Message
- Moving a Message File
- Playing Back Messages
 - Playing Back a Message
 - Fast-Forwarding/ Rewinding
 - Playing back the next message
 - Playing back the previous message
- Pausing on Playing Back
- Playing Back Repeatedly
- Scanning the fore part of message
- Erasing Messages
 - Erasing a Single Message
 - Erasing All Files in a Folder

Additional Functions Operation

- Setting the MENU
- Setting the Alarm
- Setting the Recording Mode
- Moving a Message File
- Timer Recording
- Voice Operated Recording

Hearing -Aid Operation

Connecting the Recorder with an Appliance

Recording from the Appliance

Recording to the Appliance

Recording a Telephone Conversation

Recording a Mobile phone Conversation (Optional)

Troubleshooting

Check each suggestion for the following problems.

Nothing displays on LCD.

The recorder will not record.

The recorder will not play back.

There is no sound from the speaker.

There is no sound from the earphone.

Care

Precaution for operation

Cautions

Using Batteries Safely

Cautions for Safety

Using the Recorder with PC Software

System Requirements

Key Functions

ELEX Voice Manager Installation

Installation

ELEX Voice Manager User Guide

ELEX Voice Manager Windows and Keys

Using the Elex Voice Manager

ITEM SPECIFICATION

SPECIFICATION

Key Features

Mega -long time Recording

Records Max. each 561 mins/ 1124 mins/ 2252 mins as per each built-in memory size.

Timer Recording

Lets the recorder start recording after timer setting

(From 1 minute to Max. 255 minutes :1 minute interval)

Setting the Alarm

Sets Max. 255 minutes alarm with 1 minute interval.

Moving a Message File

Moves a recorded message to another folder.

Recording messages to 5 divided folders

Records each similar message to one folder among divided A/B/C/D/L folders separately.

Each A/B/C/D folder holds up Max. 99 message files. (Max. 20 message files for L folder)

Locking an Important Message

Moves an important message to L folder separately with SET MOVE in MENU.

Messages in L folder will not be erased with erasing operation.

Setting Recording Mode

Lets you record a message with selected recording mode;HQ (High Quality) or LQ (Low Quality).

With HQ mode, the message will be recorded with high sound quality.

With LQ mode, the recording time will be twice as long as HQ mode with same memory.

Automatic Power Off

Lets the recorder turn off automatically if you do not use for more than 1 minute.

Displaying the remaining recording capacity

Shows still available recording time during recording.

(Check it by pressing FOLDER/REPEAT button during recording)

Repeat Play

Plays a part of message you want to listen to repeatedly.

Listening to the current recording message

With earphone, you can listen to the current recording message

Hearing - Aid Operation

Lets the weak in hearing use the recorder as a hearing -aid.

Recording to/from an appliance

Records to/from an appliance with AUDIO CABLE.

Displaying Volume Level

Displays the volume level of a message during recording and playing back.

Voice Operated Recording

Lets the recorder start the recording with an actual sound or voice.

Scanning a part of message

Plays a part of many recorded messages.

Pausing

Lets the recorder pause during recording and playing back.

Max. 15 minutes brings the recorder to POWER OFF automatically.

Setting the MENU

Sets various functions with setting MENU.

USB Interface

Lets you use the recorder with a PC with fast USB port.

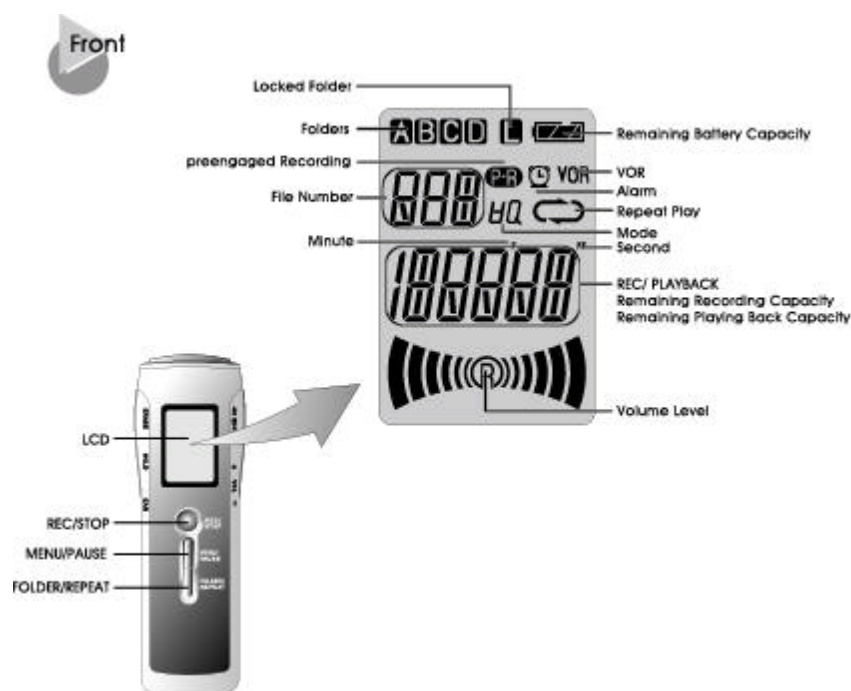
(For the SDR-160U/320U/640U Model Series)

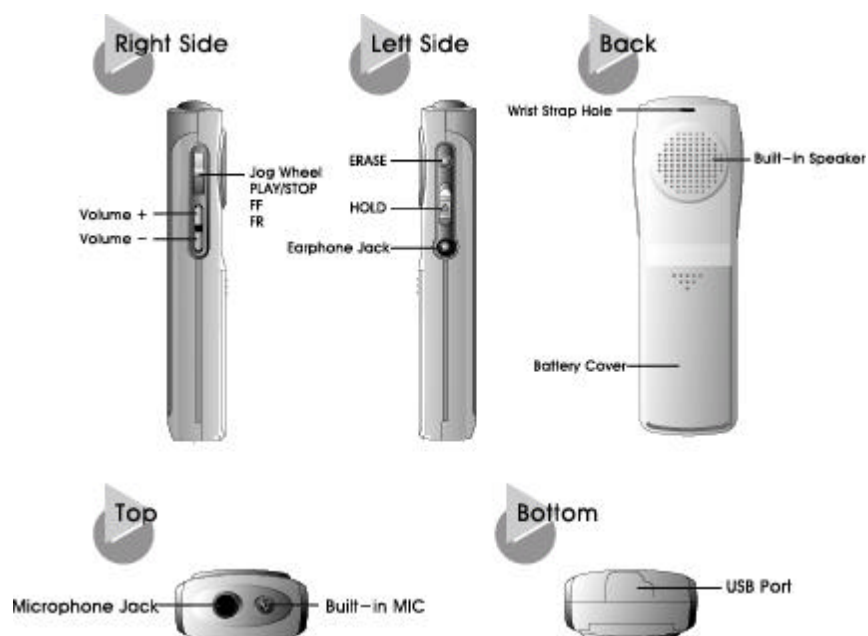
Hold

Prevents the mis -operation caused by another button pressing

During recording/playing back.

Checking Each Part's Name





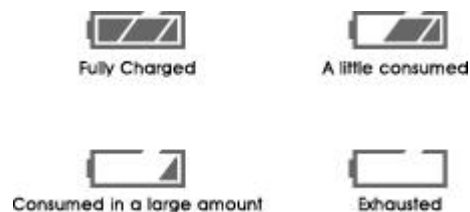
Installing Batteries

You should install batteries after turning off the recorder.

1. Open the battery cover by sliding it in direction of the arrow as following picture.



2. Install 2 pieces of AAA size battery and replace the battery cover.
Use LRO3 (Size: AAA or equivalent) type.
3. Check the remaining battery capacity by pressing REC/STOP button.



Battery Life Time

Battery Type	On Recording	On Speaker Playing	On Earphone Playing
AAA Alkaline	About 14 hrs (At Volume 13)	About 10 hrs (At Volume 13)	About 12 hours (At Volume 13)

*For getting the recorder started, turn HOLD off and press REC/STOP button one time.

Voice Recorder Operation

Recording

Recording Messages

Press REC/STOP button to start recording.

LED will be lighted once a recording starts.

To stop recording, press REC/STOP button one more time.

Recording messages to divided folders

Lets you record a message to the selected folder among A/B/C/D folders by pressing FOLDER/REPEAT button.

Each folder holds up Max. 99 message files.

A message can't be recorded to L folder.

The recorded message in one folder can be moved to another folder with SET MOVE in MENU.

Recording a message as a next message number

Records a message with another file number during the recording by pressing FF button.

Listening to the current recording message

With earphone, you can listen to the current recording message.

Pausing on Recording

To pause during recording, press MENU/PAUSE button.

To resume recording, press MENU/PAUSE button once again.

Timer Recording

"SET P-REC" in MENU makes the recorder start a recording with programmed time (Max. 255 minutes).

Lets you pre -set the starting time to record with FF/FR button.

To cancel the programmed recording, select OFF in the same way to set the programmed recording.

Locking an Important Message

To prevent deleting message file in accident, an important recorded file can be moved to L folder with SET MOVE in MENU.

Messages in L folder will not be erased with ERASE key.

Max. 20 files can be held up in L folder.

Moving a Message File

To move a recorded message file to another folder, operate SET -MOVE in MENU.

Playing Back Messages

Playing Back a Message

Press PLAY/STOP button

until the message number, volume level and recording time appear on LCD.

Sound volume can be adjusted with Volume button.

To stop playing back, press PLAY/STOP button once again.

Fast-Forwarding/ Rewinding during Playing Back

Fast-Forwarding

Press FF button for a long time during playing back.

Rewinding

Press FR button for a long time during playing back.

Playing back the next message

To play back the next message, press FF button shortly.

Playing back the previous message

To play back the previous message, press FR button shortly.

Pausing on Playing Back

To pause the message playing, press MENU/PAUSE button.

To resume playing back, press MENU/PAUSE button one more time.

Playing Back Repeatedly

Press FOLDER/REPEAT button at the position you want to repeat during playing back.

To cancel Repeat Play, press FOLDER/REPEAT button one more time.

To stop Repeat Play, press PLAY/STOP button.

Scanning the fore part of message

Press PLAY/STOP button for more than 1 second on STOP mode,

the recorder plays back the first 5 seconds of each message in the current folder.

To listen to the message till the end, press FOLDER/REPEAT key one more time.

To stop scanning, press PLAY/STOP key.

Erasing Messages

Erasing Messages

Select the file number you want to erase and press ERASE button about 1 second.

- The recorder plays back the selected message and "ERASE" will flash on LCD.

Press ERASE button one more time to delete the selected file.

To stop erasing, press any button but ERASE button.

Erasing All Files in a Folder

Select the file number you want to erase on STOP mode.

Hold down both ERASE and REC/STOP buttons about 1 second until ERASE appears and the selected file flashes.

Press ERASE button one more time to delete all files.

To stop erasing, press any button but ERASE button.

* Messages in L folder will not be erased.

Additional Functions Operation

Setting the MENU

Setting the Alarm

Press MENU/PAUSE button until "SET ALARM" appears.

Press PLAY/STOP button.

Set the Alarm by pressing FF or FR button. (Max. 255 minutes can be set)

- To cancel Alarm mode, select OFF.

Press PLAY/STOP button one more time.

Alarm mark will be displayed on LCD.

(Do not operate Alarm and Timer Recording at the same time.

In this case, Timer Recording will have priority to Alarm function.)

Setting the Recording Mode

Press MENU/PAUSE button 2 times until "SET HQLQ" appears.

Press PLAY/STOP button.

To set the recording mode, press FF or FR button.

With HQ mode, the message will be recorded with high sound quality. (Default)

With LQ mode, the recording time will be twice as long as HQ mode with same memory.

Press PLAY/STOP button one more time.

HQ or LQ will be displayed on LCD and the selected mode will be set.

Moving a Message File

Select the file you want to move by pressing FF or FR button.

Press MENU/PAUSE button 3 times until "SET MOVE" appears.

Press PLAY/STOP button.

Select the folder to move by pressing FF or FR button.

Press PLAY/STOP button one more time.

The file is moved to the selected folder.

Timer Recording

Press MENU/PAUSE button 4 times until "SET P-REC" appears.

Press PLAY/STOP button.

To pre-set the starting time to record, press FF or FR button.

(Max. 255 minutes can be pre-set)

- To cancel the Timer recording,

select OFF in the same way to set the Timer recording.

Press PLAY/STOP button one more time.

"P-R" will be displayed on LCD and the Timer Recording is set.

(Do not operate Alarm and Timer Recording at the same time.)

Voice Operated Recording

Press MENU/PAUSE button 5 times until "SET VOR" appears.

Press PLAY/STOP button.

To set VOR ON, press FF or FR button.

(Once VOR sets ON, the recorder will start recording only with an actual sound or voice.)

- To cancel VOR, select OFF with FF or FR button.

Press PLAY/STOP button one more time.

"VOR" will be displayed on LCD and the Voice Operated Recording is set.

Hearing -Aid Operation (Earphone should be inserted first)

Press MENU/PAUSE button 6 times until "SET HEAR" appears.

Press PLAY/STOP button.

To set the Hearing -Aid ON, press FF or FR button

Press PLAY/STOP button one more time.

"Add HEAR" will be flashed on LCD and the Hearing -Aid is set.

- To record a message on Hearing -Aid Mode, press REC/STOP button.

- To cancel Hearing -Aid, press MENU/PAUSE and FOLDER/REPEAT button.

*If you do not operate the recorder after setting Timer Recording or Alarm function.

"AFTER" will be displayed on LCD.

And the recorder turns to Power Save Mode.

For resuming other operation on Power Save Mode, press REC button one time to make the recorder ready for operation.

Connecting the Recorder to an Appliance

Record to/from an appliance with AUDIO CABLE

Recording from the Appliance

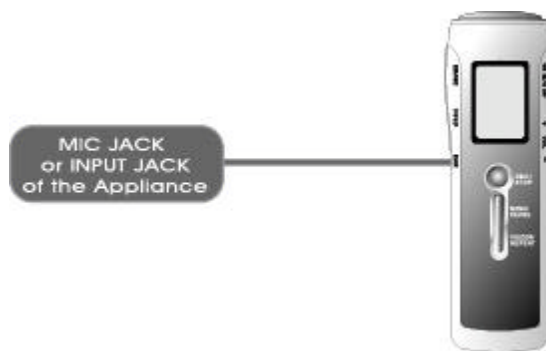
Connect the audio cable with both MIC of the recorder and EARPHONE of the appliance and then start recording.



Recording to the Appliance

Connect the audio cable with both EAR of the recorder and MIC (INPUT) of the appliance.

Press PLAY/STOP button of the recorder and RECORDING button of the appliance at the same time.



*To prevent failing to record, test in advance.

*Adjust volume level with VOLUME button of the recorder.

Connecting the Recorder to an Appliance

Recording a Telephone Conversation

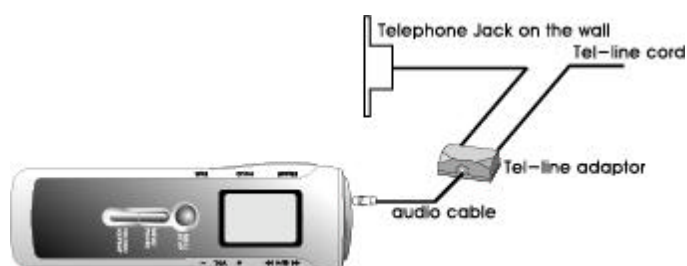
Lets you record a telephone conversation by connecting the recorder with telephone unit (except for digital telephone).

Connect the audio cable with both MIC of the recorder and AUDIO OUT JACK of the tel-line adaptor.

Connect the tel-line cord with a telephone unit and tel-line adaptor.

Connect the tel-line cord with the other part of the tel-line adaptor.

To record a telephone conversation, press REC/STOP button.



Recording a Mobile phone Conversation (Optional)

Connect the optional EARPHONE for the mobile phone recording as follows and press REC/STOP button.



⚠ To record a mobile phone recording, a consent from the other party is required.

Troubleshooting

Check each suggestion for the following problems.

Nothing displays on LCD.

In case of low battery capacity -> Make sure that fresh batteries are correctly installed.

In case of improper installing of the batteries -> Install the batteries properly.
The recorder will not record.

The recorder will not record.

In case of holding the recorder -> Make sure HOLD is set in the opposite direction from the arrow.

In case of FULL appears -> Erase unnecessary messages or move messages to another folder.

In case of low battery capacity -> Make sure that fresh batteries are correctly installed.

The recorder will not play back.

In case of holding the recorder -> Make sure HOLD is set in the opposite direction from the arrow.

In case of no recorded message -> Check the message number.

In case of low battery capacity -> Make sure that fresh batteries are correctly installed.

There is no sound from the speaker.

In case of volume level Zero -> Make sure the volume is turned up.

In case of improper EARPHONE connecting -> Connect the earphone properly.

There is no sound from the earphone.

In case of volume level Zero -> Make sure the volume is turned up.

In case of improper EARPHONE connecting -> Connect the earphone properly.

Care

Precaution for operation

Cautions

Do not drop the unit and give it a shock. It could cause troubles.

Do not place the unit at the following condition and/or places.

- The place with high temperature above 60 degrees.
- At a dusty place
- Near the heaters or from any type of heat sources.
- In a car with windows closed, especially in summer.
- At a heavy damp place like a bathroom.

Any excessive force on the LCD could cause damages to it and to overall LCD functions.

A magnetic card such as a credit card or a subway commutation ticket may not be working any longer once it is placed on or close to the speaker.

Seller holds no liability for any damages caused by misuse of the unit and any claims from the third party.

*Seller holds no liability for any lost messages which are caused by repair or any other troubles.

Using Batteries Safely

Do not have a short circuit, disassemble, heat or put battery in the fire.

- An electrolytic solution like alkaline fusible liquid could be out-flowed and do harm to your eyes, also could cause fever and any other troubles.

When your skin or dress is stained with electrolytic solution, you should wash those away and when those are contacted your eyes, you should wash those away and consult a doctor.

Do not use different kind of battery at the same time.

Take the battery off when you don't use the unit for a long time.

Cautions for Safety

Take battery off when there are malfunctions caused by smoke and heat.

Do not use in the place where electronics operation is prohibited like inside of aircraft.

Do not use in driving and walking since any accident could be happened.

Using the Recorder with a PC

Using the Recorder with PC Software

Connect the recorder to your PC first by plugging one end of the supplied USB cable into the USB port on your recorder and the other end of the cable to your PC.

With this program, the recorded messages can be up loaded/ sorted/ edited on your PC.

System Requirements

OS : MS Windows 95 or better(Except MS Windows NT)
CD ROM DRIVE : More than 4X
MEMORY : More than 8MB RAM
HDD : More than 4MB
Sound Card : Microsoft Windows Compatible

Key Functions

Uploads the recorded message from the recorder to a PC.
Saves the recorded message as another file name on PC.
Sorts the recorded messages on PC
Edits messages on PC
E-mails a voice message.
Plays back the recorded message on PC.

ELEX Voice Manager Installation

Installing

Installation

Insert Install CD in your CD ROM drive.
Program SETUP will be started as follows.

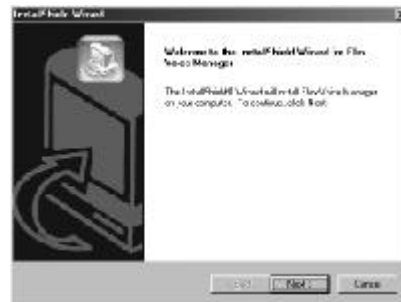


Click "NEXT".

Choose your SETUP language as follows.



Click "OK" after choosing SETUP language.



Click "NEXT" on Install Shield Wizard Window.



Click "NEXT" on Install Shield Wizard Window.



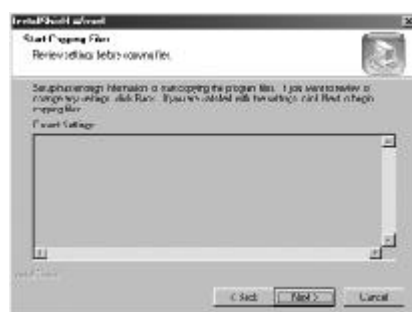
Click "YES" on License Agreement Window.



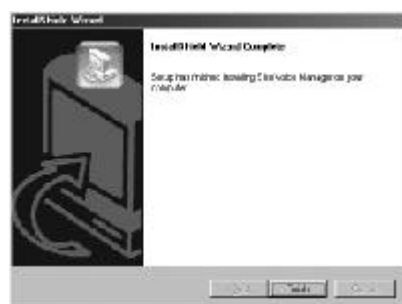
Choose your Destination Location and click "NEXT".



Select your Program Folder and click "NEXT".



Click "NEXT" on Start Copying Files Window.



Click "Finish" on Install Shield Wizard Complete Window.



Click "Yes, I want to restart my computer now" on Reboot Window.

Click "Finish".

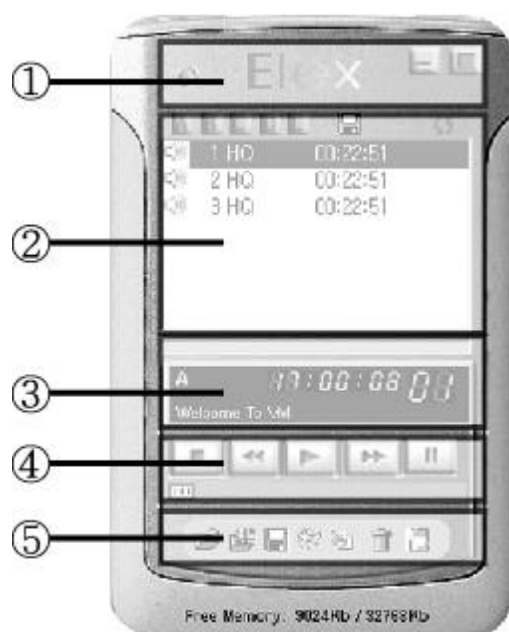
After restarting PC, connect the recorder with a PC with the Install CD in.

Driver SETUP will be proceeded automatically. (just for the first connection)

ELEX Voice Manager User Guide

ELEX Voice Manager Windows and Keys

Windows of ELEX Voice Manager

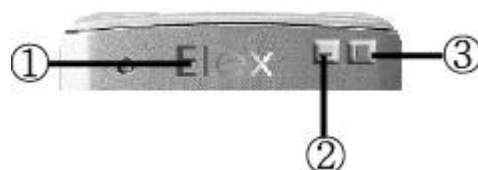


Windows of ELEX Voice Manager

- 1 Main control window
- 2 Voice recorder status window
- 3 Elex Voice Manager status window
- 4 Play control window
- 5 Voice Recorder control window

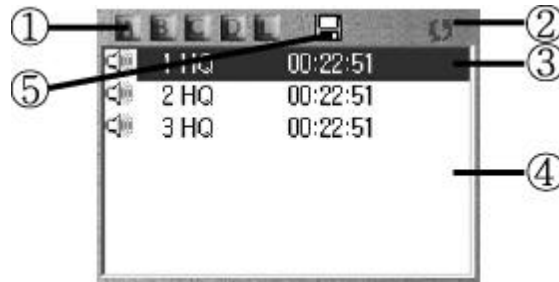
Keys of ELEX Voice Manager

- 1 Main control window



- 1.HELP : Shows the version of Voice Manager
- 2.Minimize Button : Converts the program to minimized mode.
- 3.Exit button : Close Elex Manager.

2 Voice recorder status window



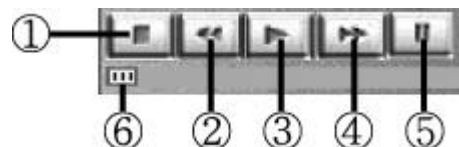
1. Voice Data Folder select button : Selects voice data folder of the recorder.
2. Refresh button : Renews data of Voice Recorder status window.
3. File select : Displays current selected file.
- 4.The file information of current selected folder will be displayed.
- 5.Folder for saving general data.

3 Elex Voice Manager status window



1. Shows folder of the selected voice recorder, current time (during playing back, playing time will be displayed) and selected file number.
2. Shows proceeding status of Upload/Download/wav conversion.

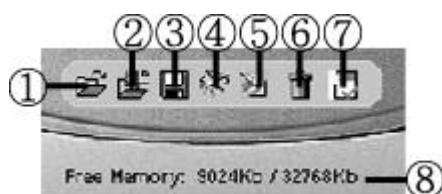
4 Play control window



1. Stop : Stops playing back a file.
2. Review : Plays back a file again from 10 seconds prior part of the file.
3. Playback : Plays back the selected file.

4. FF : Forwards the file 10 seconds fast.
5. Pause : Pauses playing back a file.
6. Displays the playing back status.
(Moves to any status you want with mouse dragging)

5 Voice Recorder control window



1. Open : Opens *.svf file on PC.
2. Down load : Down loads files from a PC to the recorder.
3. Save : Saves the selected data to a PC.
4. E-mail : E-mail the selected file. (Only in case the E-mail account is set)
5. Edit : Proceeds simple EDIT function of the playing file.
6. Erases the selected file.
7. Format : Erases all data from the recorder.
8. Displays both whole memory and remaining memory of the recorder.

Using the Elex Voice Manager

Open the program

Connect the recorder to a PC with USB cable and operate the program.

"Elex Voice Manager" will be displayed.

The first file of A folder is selected as a default.

Play back a file(*.svf)

Select any file you want and click Play button.

FF/REW/Pause/mouse dragging can be used during playing back.

Up load a file

Select any file you want and click save button.

By specifying the file as wav, the file can be saved as wav.

Select the directory & file name and save the file.

Open the saved file (*.svf) on PC

Click open button and select the saved file.

Select any file you want and click open button.

Down load a file

Select a folder (A/B/C/D/L) to down load, click download button and select the file to down load.

Click download button.

Erase a file

Select a file and click Erase button.

E-mail

Select the file to forward and click Mail button.

Input an E-mail address once E-mail window opens.

For using this function, E-mail account should be set on the PC.

Format

For erasing all data from the recorder, click Format button.

Save general files

Select Data folder and click download button.

all kind of files can be saved.

Open general files

Select a file, click Save button and input file name and extension type.

The extension type should be same as the saved file's.

ITEM SPECIFICATION

	16MB	32MB	64MB
VOICE RECORDING TIME	HQ 257min LQ 561min	516min 1124min	1032min 2252min
MEMORY	16MB/32MB/64MB BUILT IN FLASH MEMORY		
DIMENSION	33*104.3*17.9mm		
WEIGHT	42g(EXCLUDED BATTERY)		
PC INTERFACE	USB TYPE(MAX 1000:1 UP/DOWN SPEED)		
POWER SOURCE	2* 1.5V AAA ALKALINE BATTERY		
BATTERY CONSUMPTION	SPEAKER PLAYBACK: about 680MIN. RECORDING MODE: about 660MIN. EARPHONE PLAYBACK: about 720MIN.		
RECORDING FREQUENCY RESPONSE	300Hz~3,500Hz		
BUILT IN MICROPHONE	OMNI-DIRECTIONAL ELECTRIC CONDENSER MICROPHONE		
AUDIO IN/OUT CABLE	AUDIO ANALOG IN/OUT(-60dB) 3.5φ		
OUTPUT	EARPHONE(MINI PLUG/STEREO): IMP OVER 16ohm, 3.5φ		
LOUD SPEAKER	16ohm DYNAMIC SPEAKER		
MAX. OUTPUT	EARPHONE: 5mW at THD 10%, 16ohm SPEAKER: 65mW at THD 10%, 8ohm		
FOLDER & FILE	MAX 99 FILE IN EACH FOLDER(A/B/C/D) L: LOCK FOLDER(20FILE MAX)		
OS	Windows 95 or better(Except Windows NT)		
SYSTEM REQUIREMENT	CD ROM DRIVE : More than 4X MEMORY : More than 8MB RAM HDD : More than 4MB Sound Card : Microsoft Windows Compatible		

THIS DEVICE COMPLIES WITH PART 15 OF THE FCC RULES. OPERATION IS SUBJECT TO THE FOLLOWING TWO CONDITIONS: (1) THIS DEVICES MAY NOT CAUSE HARMFUL INTERFERENCE, AND (2) THIS DEVICE MUST ACCEPT ANY INTERFERENCE, RECEIVED, INCLUDING INTERFERENCE THAT MAY CAUSE UNDERSIRED OPERATION.

Note : This equipment has been tested and found to comply with the limits for a Class B digital device, pursuant to part 15 of the FCC Rules. These limits are designed to provide reasonable protection against harmful interference in a residential installation. This equipment generates, uses and can radiate radio frequency energy and, if not installed and used in accordance with the instructions, may cause harmful interference to radio communications. However, there is no guarantee that interference will not occur in a particular installation.

If this equipment does cause harmful interference to radio or television reception, which can be determined by turning the equipment off and on, the user is encouraged to try to correct the interference by one or more of the following measures :

- Reorient or relocate the receiving antenna.
- Increase the separation between the equipment and receiver.
- Connect the equipment into an outlet on a circuit different from that to which the receiver is connected.
- Consult the dealer or an experienced radio/TV technician for help.

NOTE: THE MANUFACTURER IS NOT RESPONSIBLE FOR ANY RADIO OR TV INTERFERENCE CAUSED BY UNAUTHORIZED MODIFICATIONS TO THIS EQUIPMENT. SUCH MODIFICATIONS COULD VOID THE USER'S AUTHORITY TO OPERATE THE EQUIPMENT.