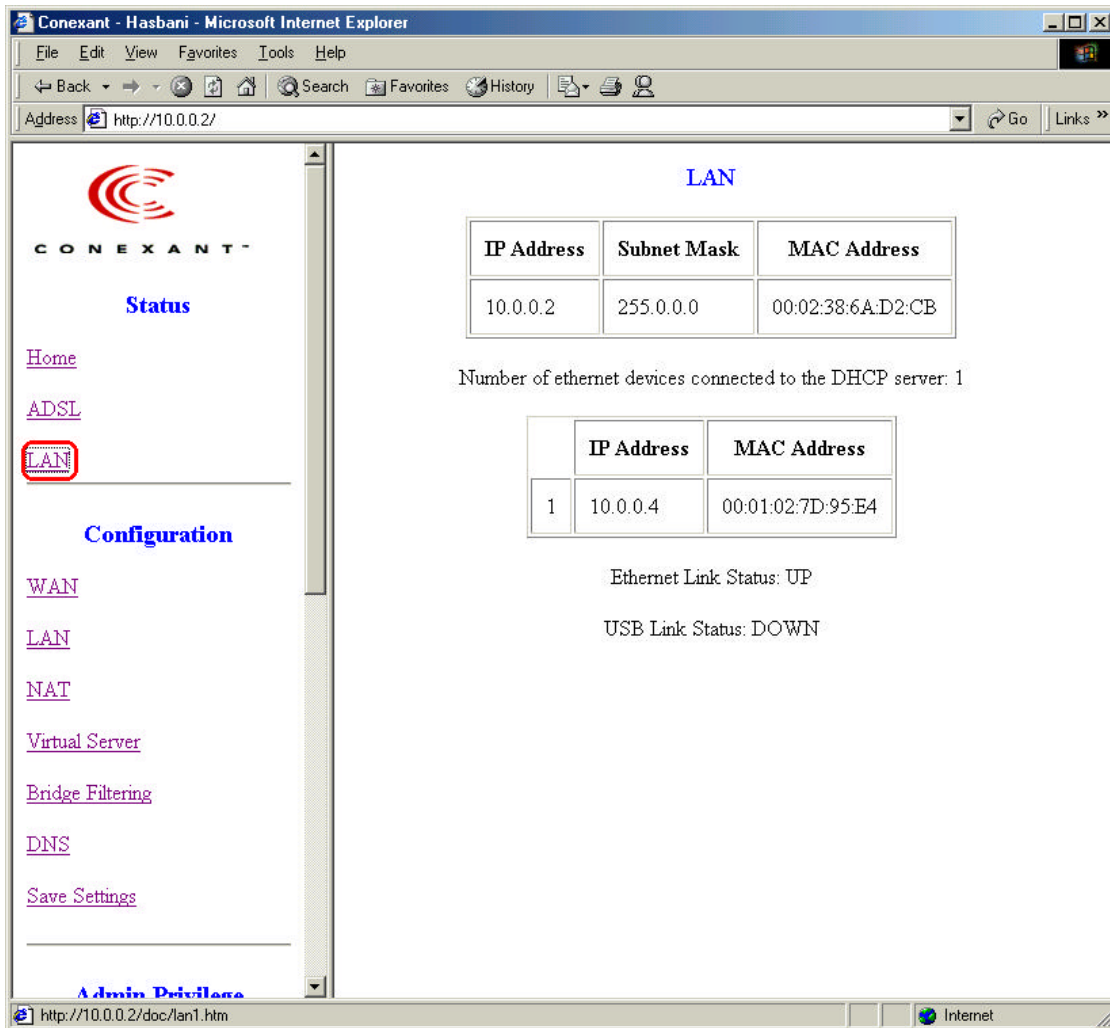


ADSL STATUS

ADSL Line State: **SHOWTIME**
 ADSL Startup Attempts: **1**
 Elapsed Time: **0 days 0 hours 14 minutes 37 seconds**

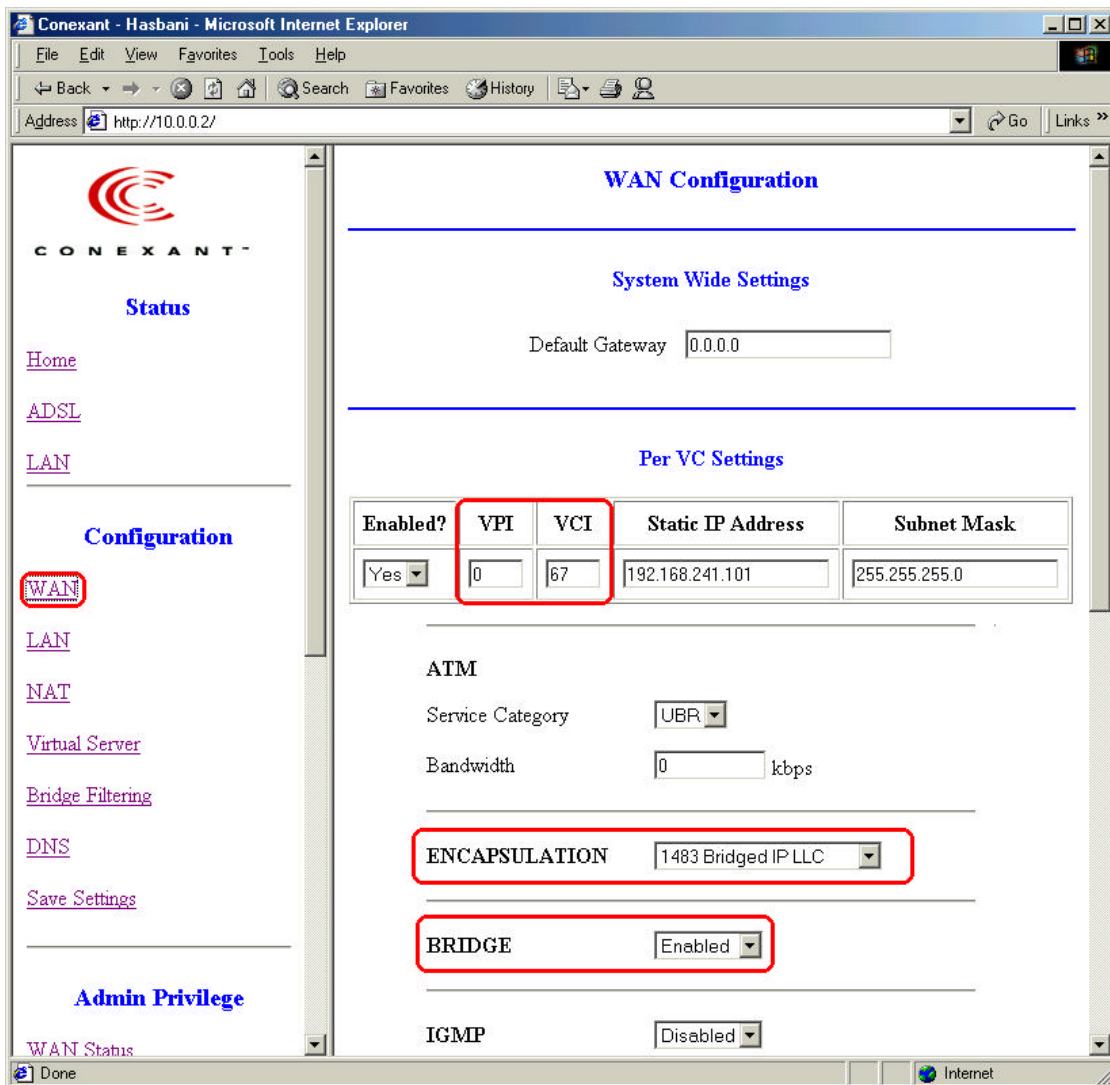
	Downstream	Upstream	
SNR Margin	19.4	9.0	dB
Line Attenuation	11.4	12.0	dB
Errored Seconds	0	0	
Loss of Signal	0	0	
Loss of Frame	0	0	
CRC Errors	0	0	
Data Rate	8128	896	kbps
Latency	FAST	FAST	

(3) LAN Information : view ADSL MAC Address and IP Address, Subnet Mask



- (4) Setting WAN status : If you click “WAN” at the “Configuration” section, the page is to appear as below. And check the VPI, VCI value.
ENCAPSULATION Mode Change 1483 Bridged, PPPoA, PPPoE

NOTE: The VPI and VCI parameter is depend on ISP



Ethernet Configuration

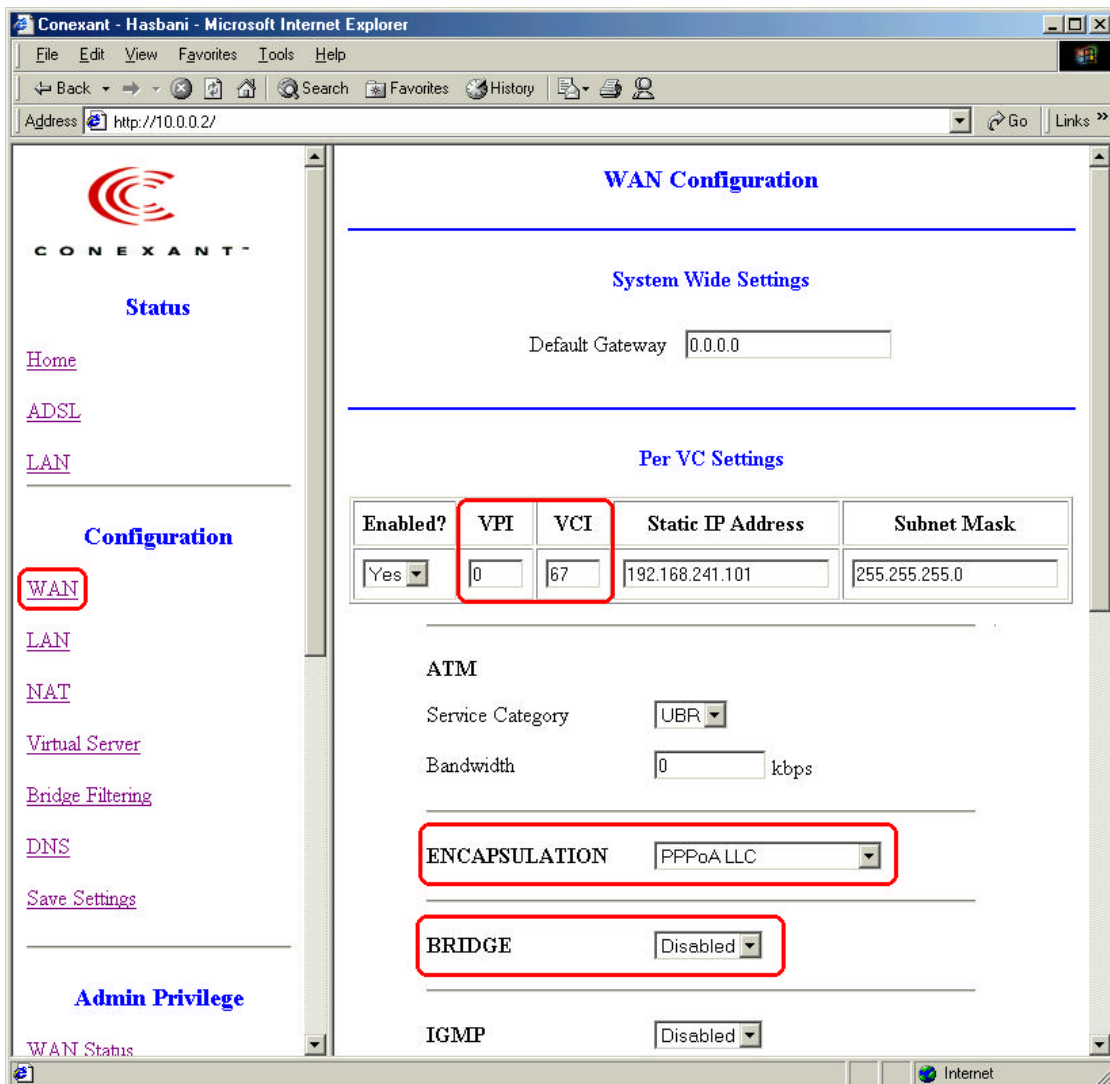
Bridge Mode	Router Mode (PPPoA / PPPoE)	Router Mode (Static IP)
-------------	--------------------------------	----------------------------

WAN Configuration			
Enabled?	Yes	Yes	Yes
Static IP Address	N/A	N/A (AUTO)	Provided by ISP
Subnet Mask	N/A	N/A (AUTO)	Provided by ISP
WAN Advanced Configuration			
Encapsulation	1483 Bridged IP LLC	PPPoA LLC PPPoE LLC	1483 Bridged IP LLC
Bridge	Enabled	Disabled	Disabled
PPP Service Name	N/A	N/A(ISP)	N/A
PPP User Name	N/A	Provided by ISP	N/A
PPP Password	N/A	Provided by ISP	N/A
DHCP Client enable	UnChecked	UnChecked	UnChecked
LAN Configuration			
DHCP Server	Not Checked	Checked	Checked
NAT Configuration			
NAT	Disabled	NAPT	NAPT
DNS Configuration			
Default Gateway	N/A	N/A (AUTO)	Provided by ISP
Preferred DNS Server	N/A	N/A (AUTO)	Provided by ISP
Alternate DNS Server	N/A	N/A (AUTO)	Provided by ISP
RIP Configuration			
RIP	Disabled	Disabled	Disabled

1. Using PPPoA Mode

- 1-1) When you click on the "WAN" from "Configuration" section,
Then set the VPI and VCI value.

- VPI, VCI Value EX) 0, 67
- ENCAPSULATION : PPPoA LLC
- BRIDGE : Disabled

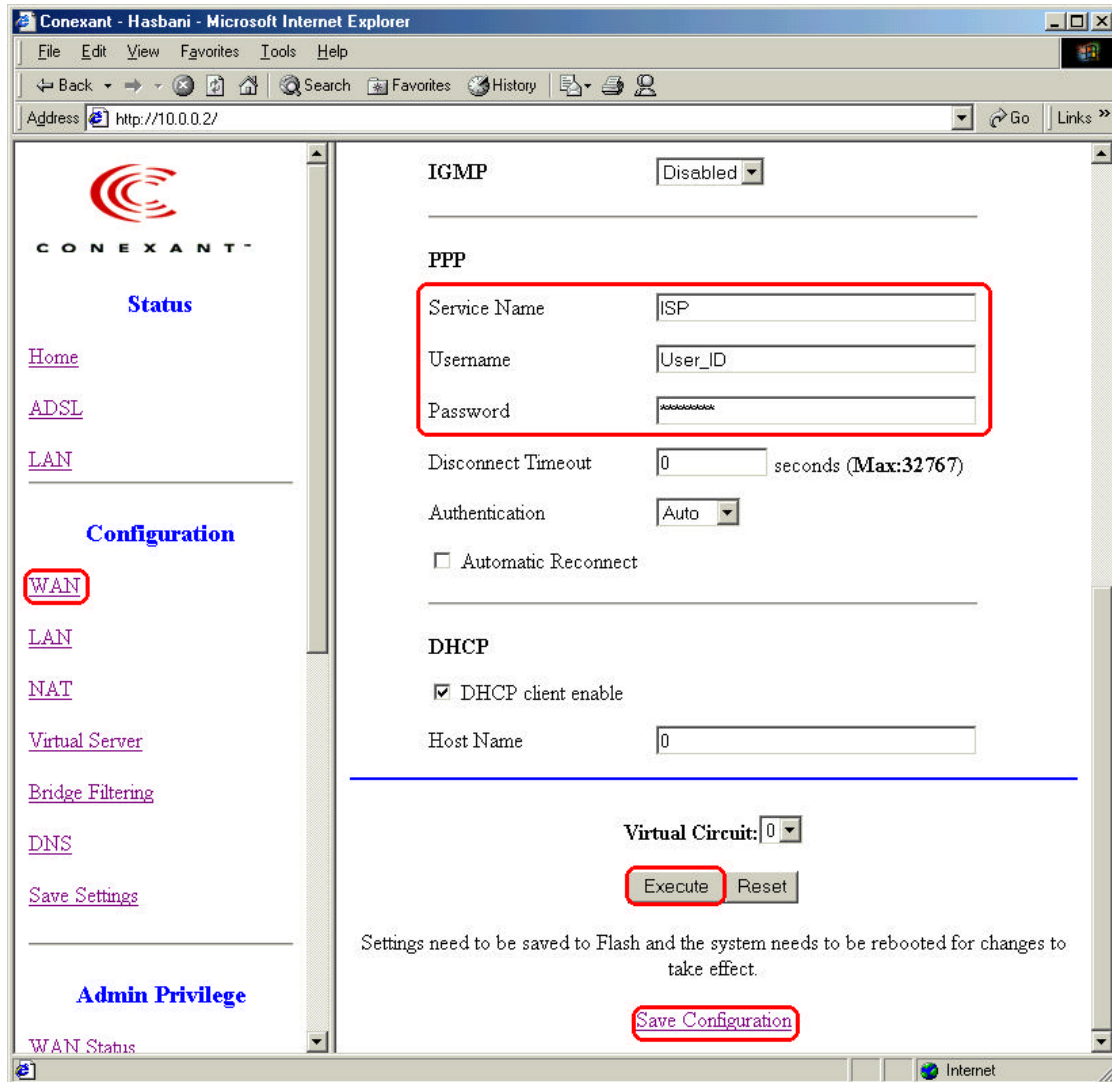


1-2) [WAN Configuration], then set the picture as follows.

- PPP

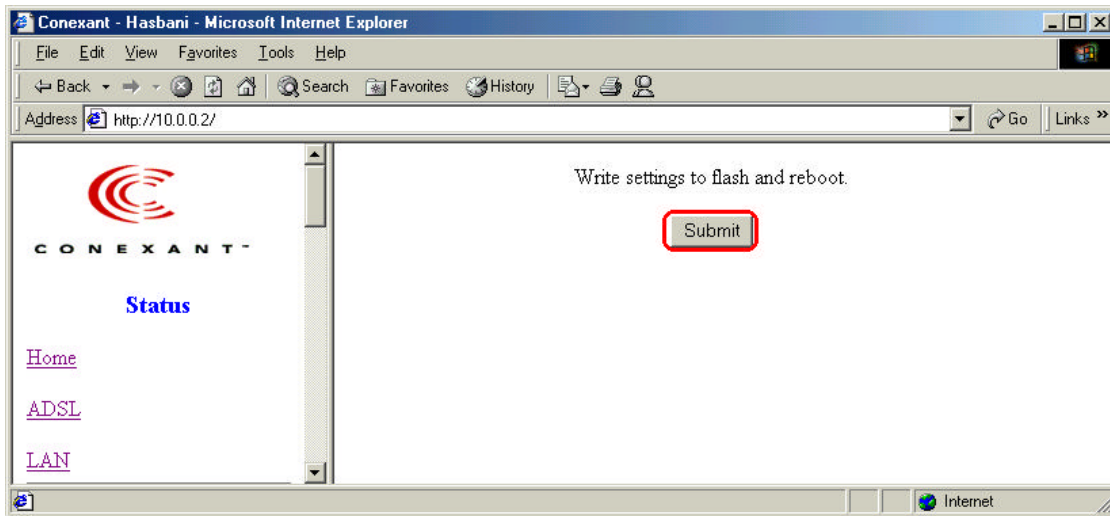
Service Name : **Name of ISP provider** Username : **User ID**

Password : **User Password**

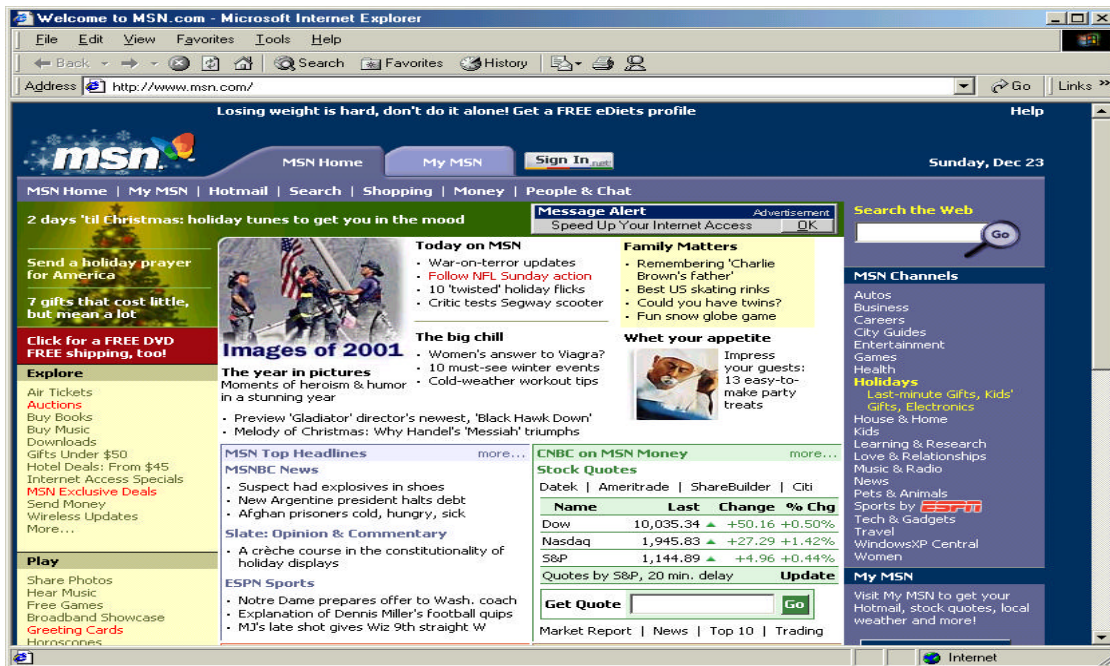


The screenshot shows a web browser window titled "Conexant - Hasbani - Microsoft Internet Explorer" with the address bar showing "http://10.0.0.2/". The page content is divided into a left sidebar and a main configuration area. The sidebar includes a "Status" section with links for Home, ADSL, LAN, and WAN (highlighted with a red box), and a "Configuration" section with links for WAN (highlighted with a red box), LAN, NAT, Virtual Server, Bridge Filtering, DNS, and Save Settings. Below the configuration section is an "Admin Privilege" section with a link for WAN Status. The main configuration area is titled "PPP" and contains several fields: "Service Name" (containing "ISP", highlighted with a red box), "Username" (containing "User_ID", highlighted with a red box), "Password" (containing masked characters, highlighted with a red box), "Disconnect Timeout" (set to 0 seconds, with a maximum of 32767), "Authentication" (set to Auto), and an unchecked "Automatic Reconnect" checkbox. Below the PPP section is the "DHCP" section, which has "DHCP client enable" checked and "Host Name" set to 0. At the bottom of the configuration area, there is a "Virtual Circuit" dropdown set to 0, and two buttons: "Execute" (highlighted with a red box) and "Reset". A message below the buttons states: "Settings need to be saved to Flash and the system needs to be rebooted for changes to take effect." Below this message is a "Save Configuration" button (highlighted with a red box).

2) Setting as below, click [**Execute**] button and click [Save Configuration] to save the value. click [**Submit**] button to proceed.



3) If you see the link lamp turn on, the value is saved in success.
you can use internet.



2. Using PPPoE Mode

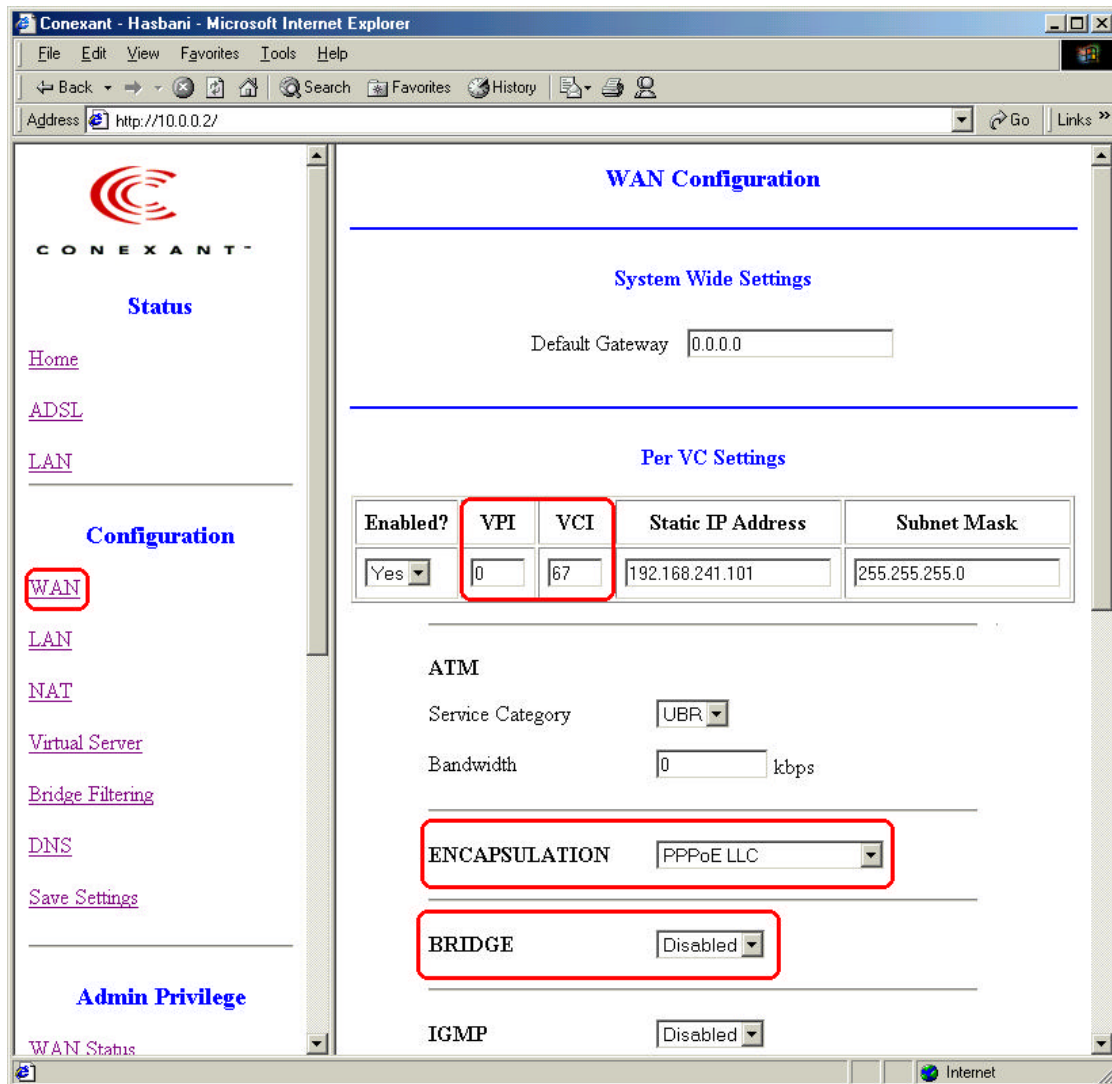
1-1) When you click on the "WAN" from "Configuration" section,

Then set the VPI and VCI value.

- VPI, VCI Value EX) 0, 67

- ENCAPSULATION : PPPoE LLC

- BRIDGE : Disabled

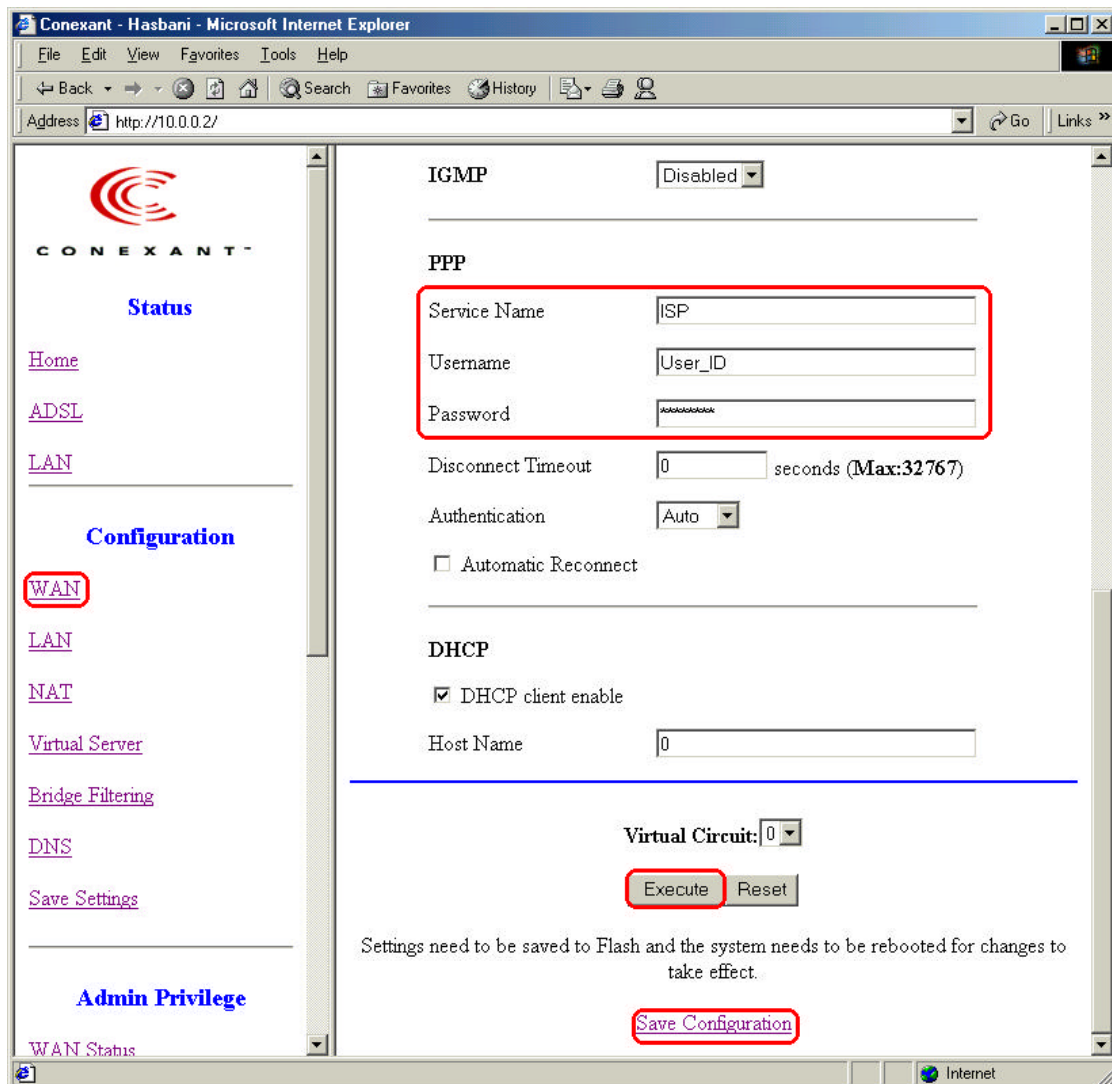


1-2) [WAN Configuration], then set the picture as follows.

- PPP

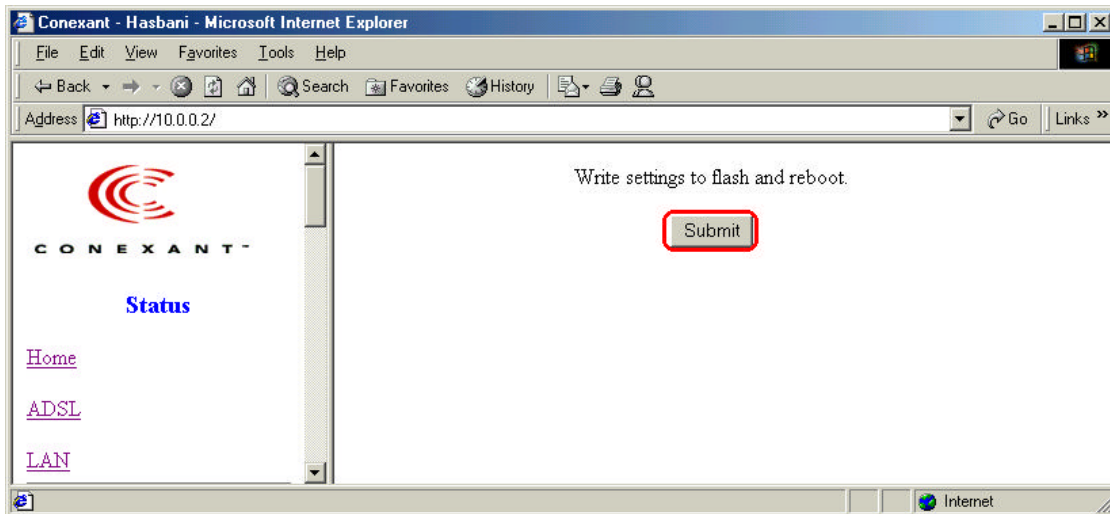
Service Name : **Name of ISP provider** Username : **User ID**

Password : **User Password**

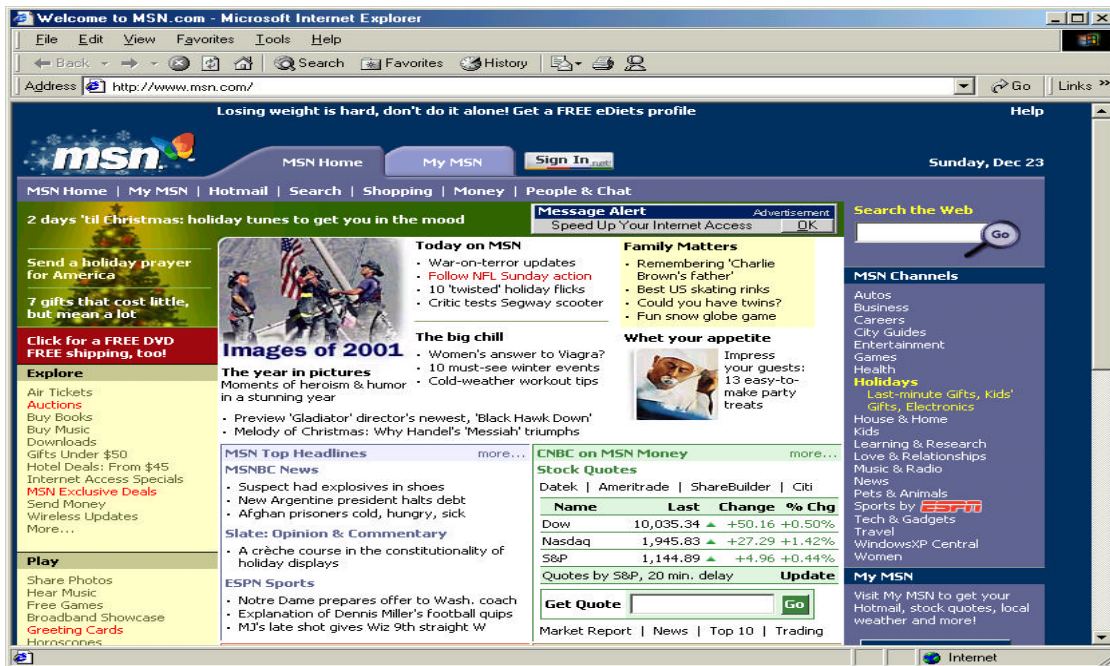


The screenshot shows a web browser window titled "Conexant - Hasbani - Microsoft Internet Explorer" with the address bar showing "http://10.0.0.2/". The page content is organized into sections: "Status" with links for Home, ADSL, and LAN; "Configuration" with links for WAN (highlighted with a red box), LAN, NAT, Virtual Server, Bridge Filtering, and DNS; and "Admin Privilege" with a link for Save Settings. The main configuration area includes: "IGMP" set to "Disabled"; "PPP" section with "Service Name" (ISP), "Username" (User_ID), and "Password" (masked) fields all highlighted with a red box; "Disconnect Timeout" set to 0 seconds; "Authentication" set to "Auto"; an unchecked "Automatic Reconnect" checkbox; "DHCP" section with "DHCP client enable" checked and "Host Name" set to 0; "Virtual Circuit" set to 0; and "Execute" and "Reset" buttons, with "Execute" highlighted in red. At the bottom, a message states "Settings need to be saved to Flash and the system needs to be rebooted for changes to take effect." and a "Save Configuration" button is highlighted with a red box.

2) Setting as below, click [**Execute**] button and click [Save Configuration] to save the value. click [**Submit**] button to proceed.



3) If you see the link lamp turn on, the value is saved in success.
you can use internet.



3. Using Bridged Mode

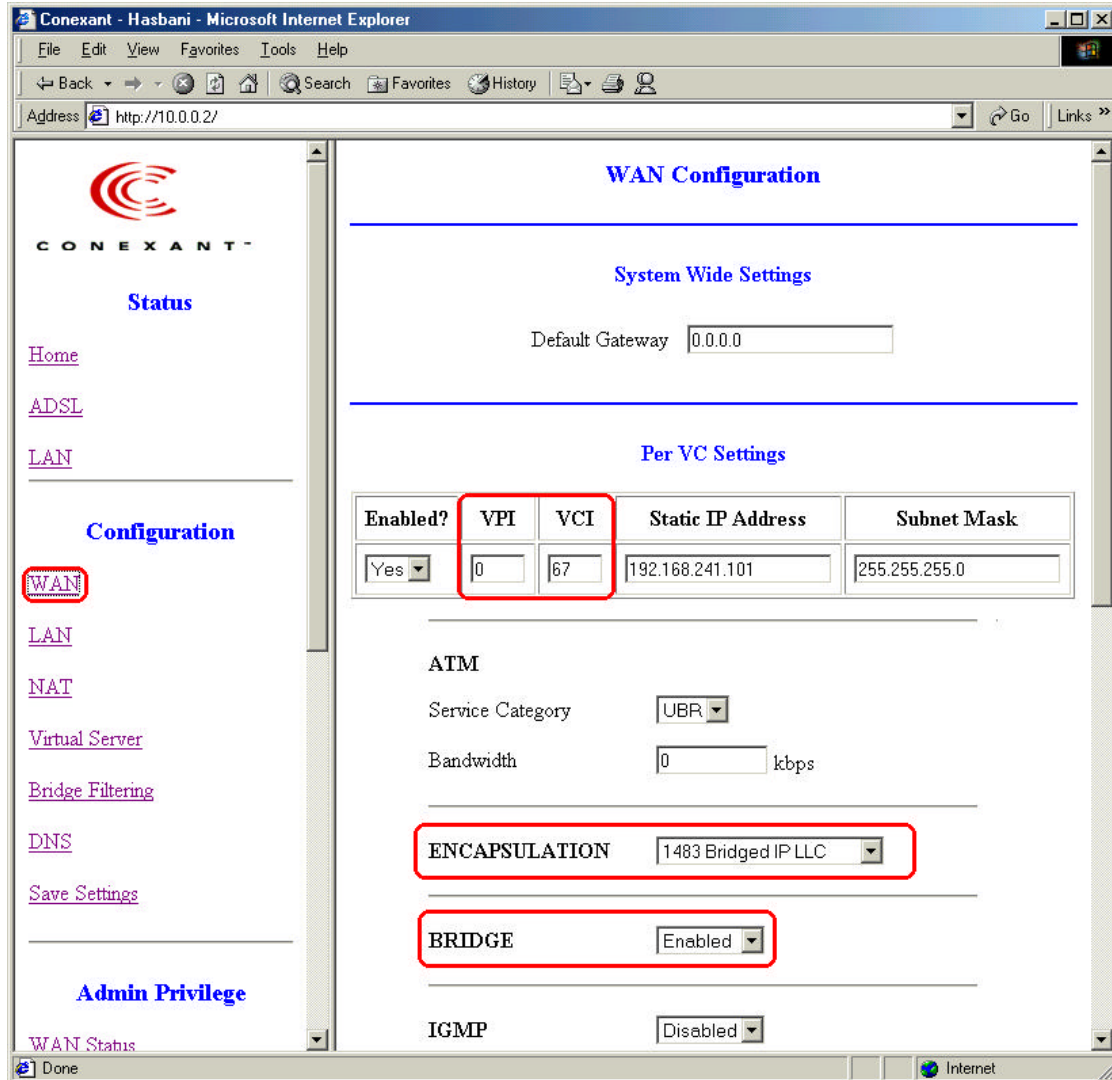
1-1) When you click on the "WAN" from "Configuration" section,

Then set the VPI and VCI value.

- VPI, VCI Value EX) 0, 67

- ENCAPSULATION : **1483 Bridged IP LLC**

- BRIDGE : **Enabled**



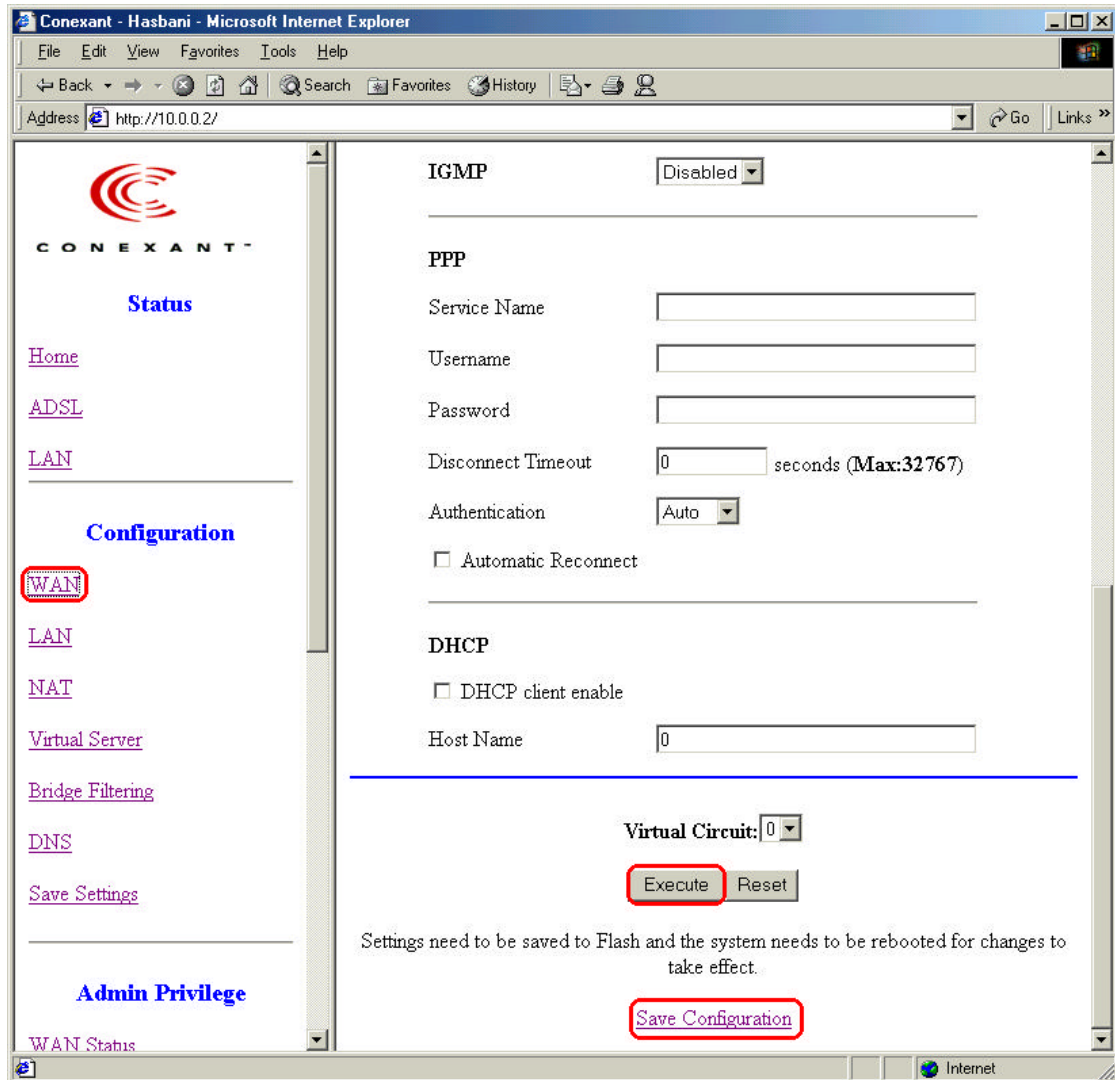
1-2) [WAN Configuration], then set the picture as follows.

- PPP

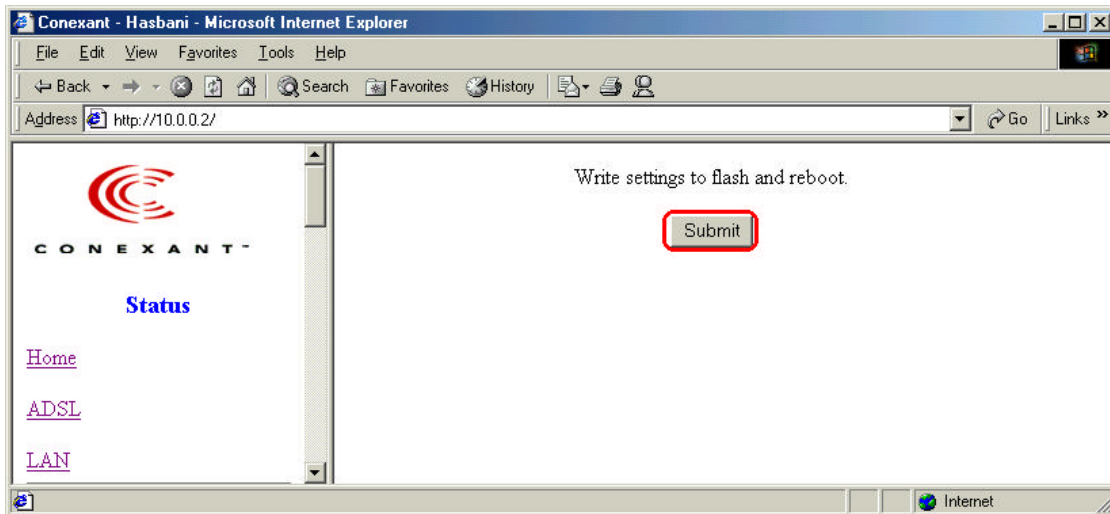
Service Name : Blank

Username : Blank

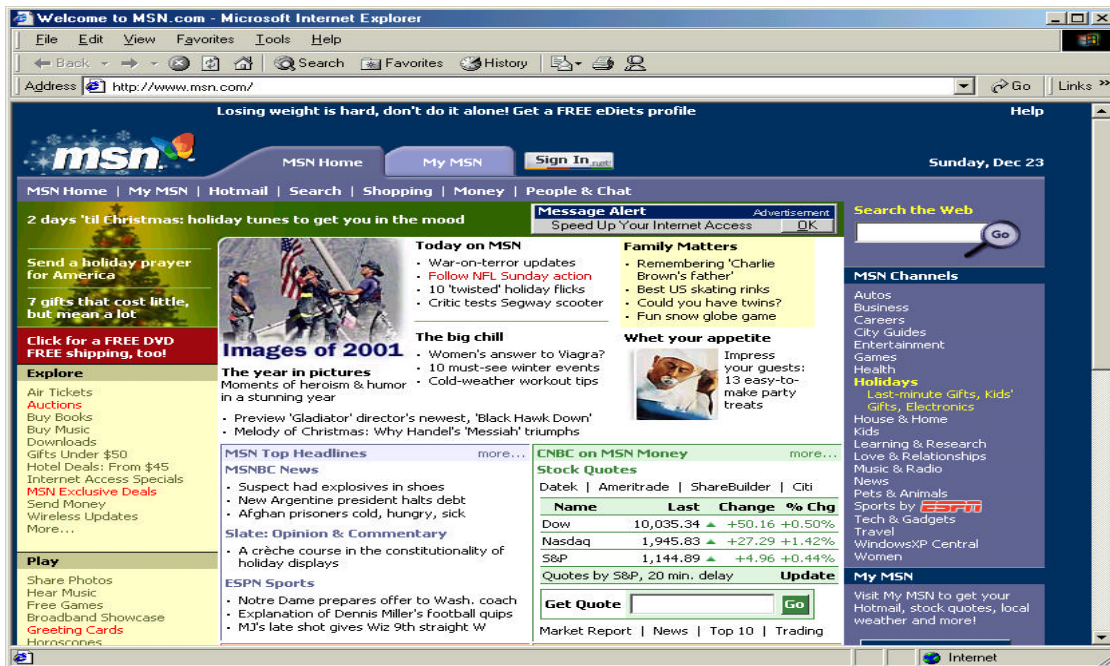
Password : Blank



2) Setting as below, click [**Execute**] button and click [Save Configuration] to save the value. click [**Submit**] button to proceed.



3) If you see the link lamp turn on, the value is saved in success.
you can use internet.



Connect and disconnect the Internet.

After installing 201, you can connect the Internet following procedure..

In case of 1483 Bridged Mode

<<Notice >>

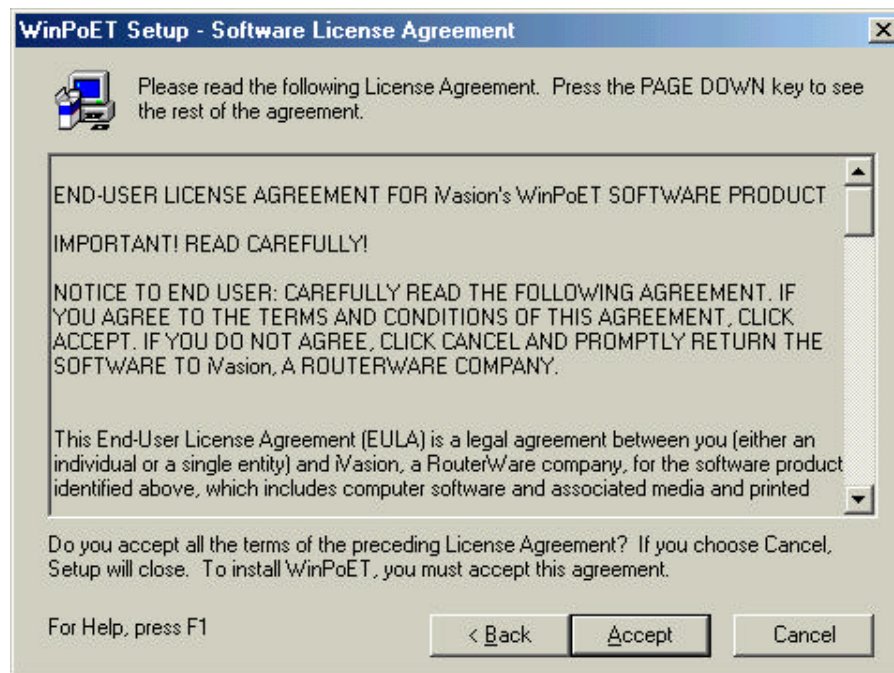
If the service type of your local ADSL service provider is PPPoE, please contact to your local ADSL service provider to get a PPPoE session client application.

We describe the installation procedure of WinPoET, one of PPPoE session client applications which is generally used. Most local ADSL service providers have the software license agreement of PPPoE session client applications, so you can download those from their website or get those from them as CD-ROM.

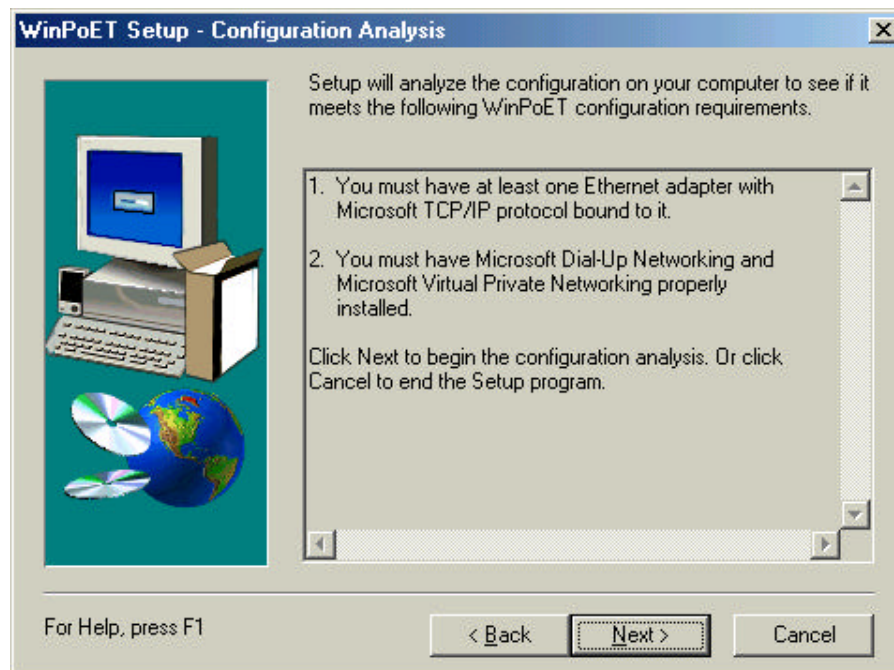
1. Start installation to double-click the "WinPoET.exe" file in WinPoET setup program.



2. In [Software License Agreement] window, please read the License Agreement carefully. click "[Accept]" button if you accept this agreement.

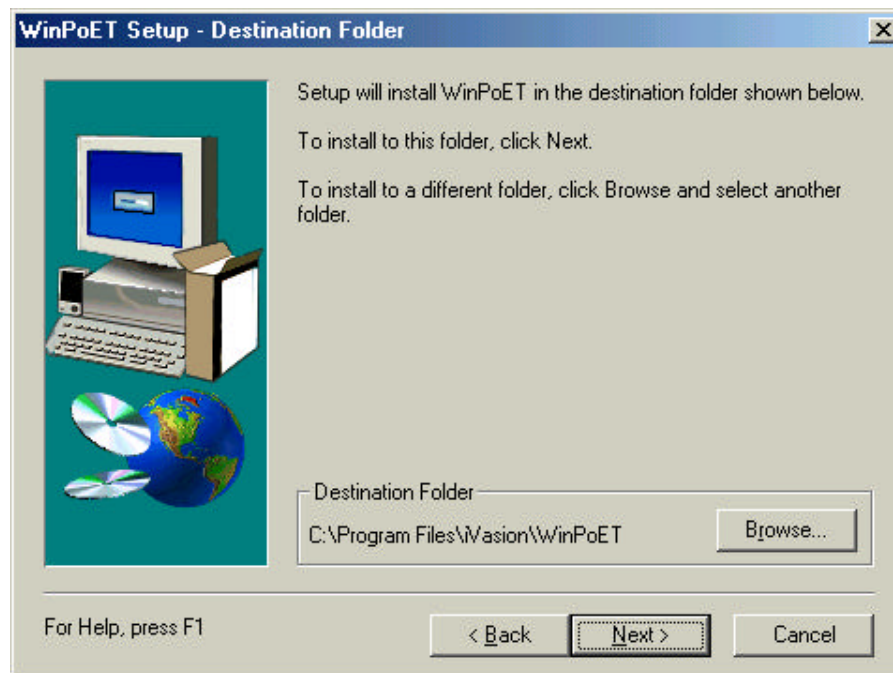


3. In [Configuration Analysis] window, click "[Next]" button.



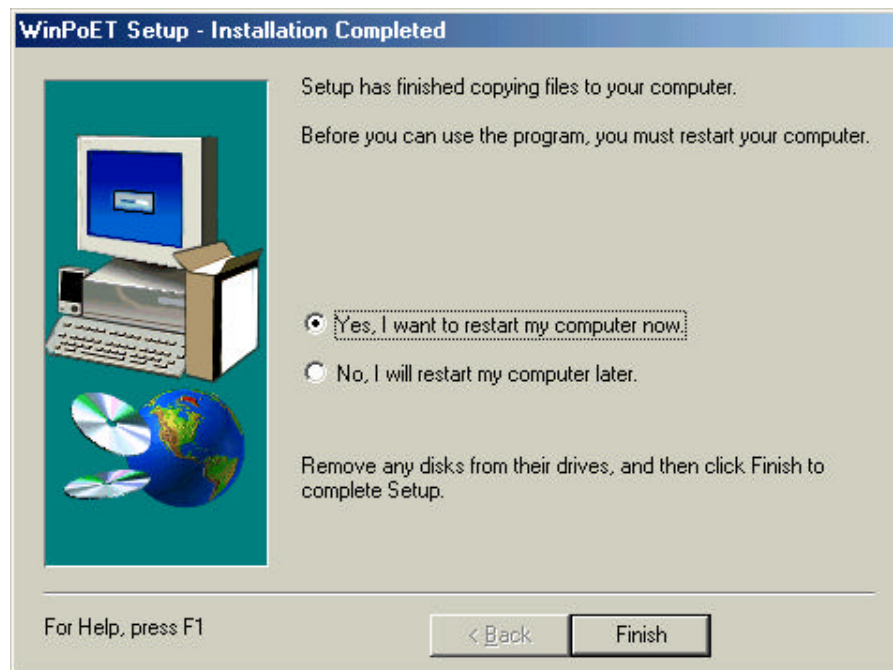
4. In [Destination Folder] window, click "[Next]" button if you want to use default folder.

If you want to use different folder, click "[Browser]" button to select the folder.



5. If [Installation Completed] window pops up, the installation is done successfully.

Click the “[Next]” button for rebooting your PC.



6. After rebooting, you can find “ [WinPoET]” shortcut icon on the wallpaper in your PC. Double-click “[WinPoET]” shortcut icon on the wallpaper in your PC.



7. In [**WinPoET Dialer**] window, fill in User name & Password according your user account at ADSL ISP, then click “Connect” button.

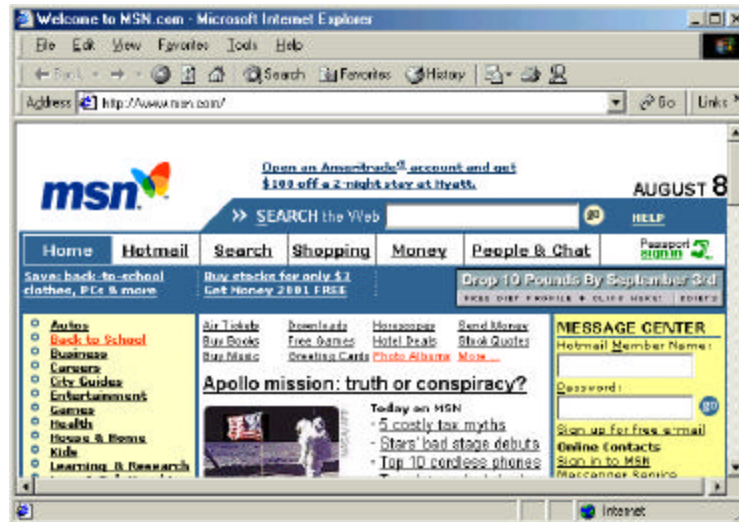
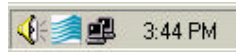


<<Notice >>

If you want to save the current information for future use, tick the “Save Password” box.

8. In a few seconds, the WinPoET icon appears in the system tray on your PC.

Then, connecting the Internet has finished.



Disconnecting to the Internet

Click the right button in your Mouse upon the WinPoET icon in the system tray.

- 1) move your mouse point over the WinPoET icon in the system tray.
- 2) Click the right button in your mouse.
- 3) select "Disconnect" and press enter to disconnect Internet.

