

## FCC ID SAMPLE LABEL & LOCATION

---

(SEE NEXT PAGE)

### **LABELLING REQUIREMENTS** **PER §§ 2.925**

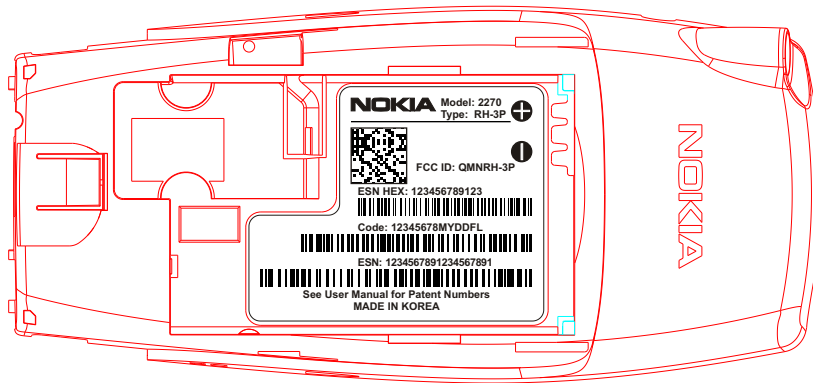
The Label shown shall be permanently affixed at a conspicuous location on the device and be readily visible to the user at the time of purchase.



◆ MAIN FUNCTIONAL CHARACTERISTIC

◆ MAIN FUNCTIONAL CHARACTERISTIC  
( Proof of Process Capability Required )

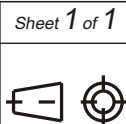
## Model 2270



Material

Original Designer

NOKIA



Sheet 1 of 1

Original Scale 1:1

Original Size A4

NMP Code

-----

0.1

Avancena230103

Item Name

Falcon Type Label On D-C over

Document Number

DMD11055

Doc.  
Vers.

0.2

Name / Date

Avancena270103

Change Ref.

Approved / Date