

FCC ID SAMPLE LABEL & LOCATION

(SEE NEXT PAGE)

LABELLING REQUIREMENTS

The Label shown shall be permanently affixed at a conspicuous location on the device and be readily visible to the user at the time of purchase.

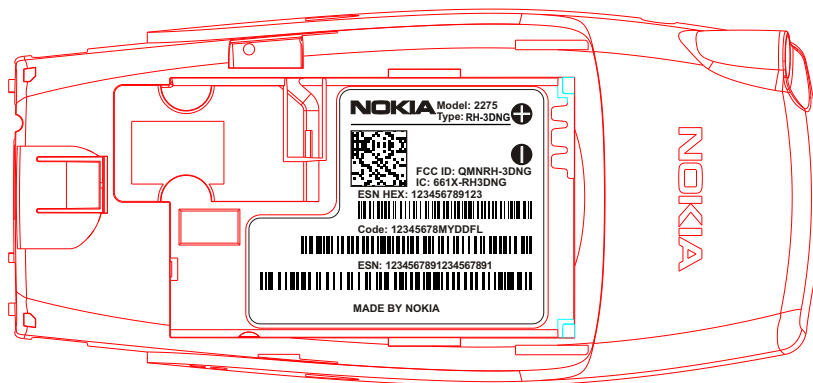


THIS DRAWING IS PROTECTED BY COPYRIGHT AS AN UNPUBLISHED WORK
UNAUTHORIZED REPRODUCTION OF THIS DRAWING IS NOT PERMITTED
THIS DRAWING CONTAINS PROPRIETARY AND CONFIDENTIAL INFORMATION
This document is the property of Nokia Mobile Phones

FUNCTIONAL CHARACTERISTICS KEY

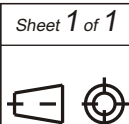
- ◆ MAIN FUNCTIONAL CHARACTERISTIC
- ◆ MAIN FUNCTIONAL CHARACTERISTIC
(Proof of Process Capability Required)

Model 2275



Material

Original Designer

NOKIA

Sheet 1 of 1

Original Scale 1:1

Original Size A4

NMP Code

Item Name

Falcon Type Label On D-C over

Document Number

DMD11206

Doc.
Vers.

0.1

Name / Date

Avancena240203

Change Ref.

Approved / Date