

FCC ID SAMPLE LABEL & LOCATION

(SEE NEXT PAGE)

LABELLING REQUIREMENTS **PER §§ 2.925**

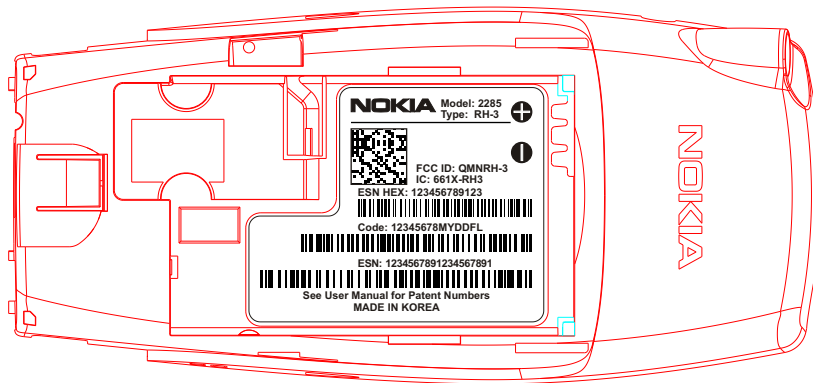
The Label shown shall be permanently affixed at a conspicuous location on the device and be readily visible to the user at the time of purchase.



◆ MAIN FUNCTIONAL CHARACTERISTIC

◆ MAIN FUNCTIONAL CHARACTERISTIC
(Proof of Process Capability Required)

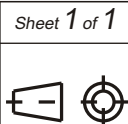
Model 2285



Material

Original Designer

NOKIA



Sheet 1 of 1

Original Scale 1:1

Original Size A4

NMP Code

0.1

Avancena101202

Item Name

Falcon Type Label On D-C over

Document Number

DMD10921

Doc.
Vers.

0.2

Name / Date

Avancena230103

Change Ref.

Approved / Date