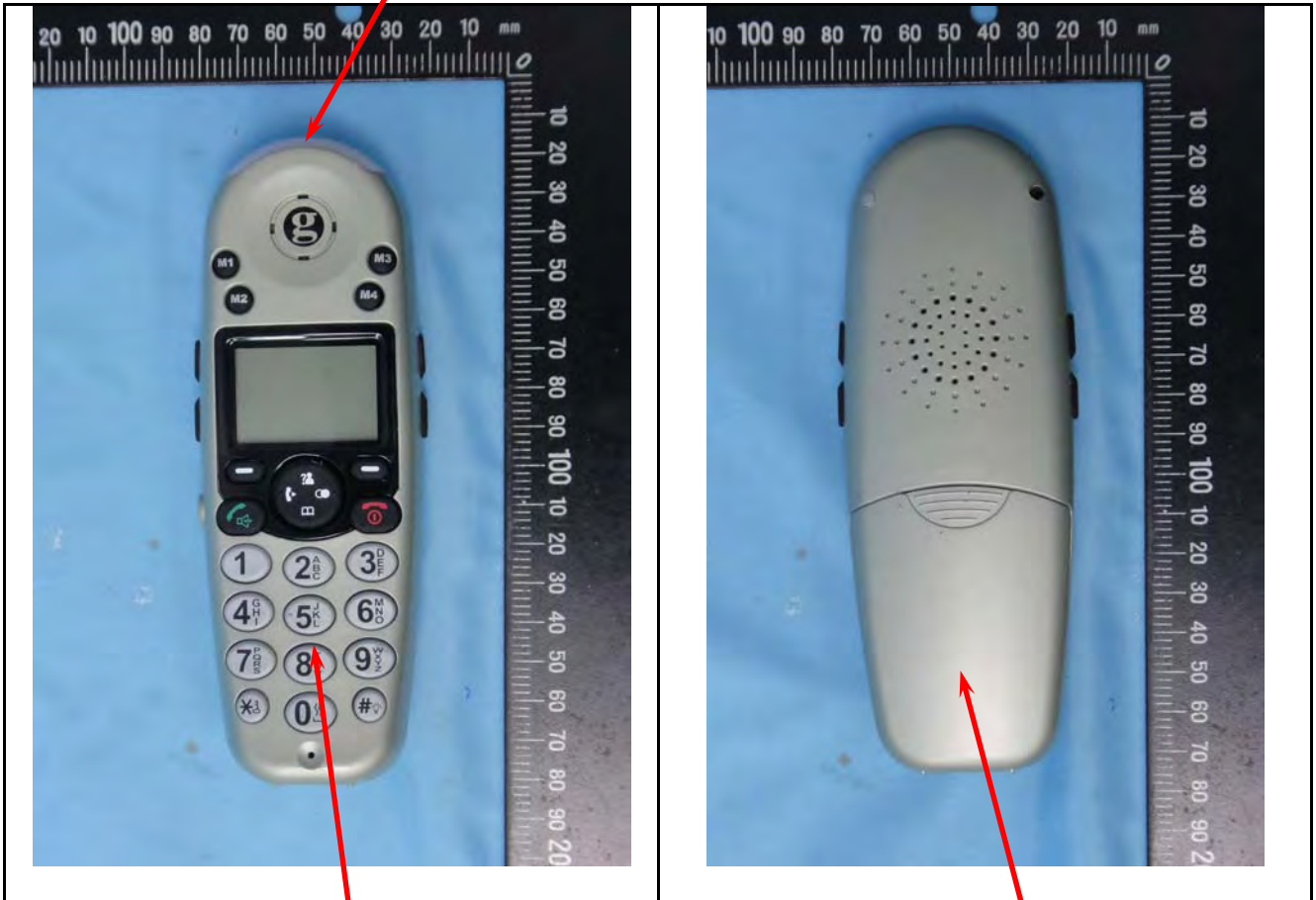


SAR Test Setup Photographs

EUT Top side



EUT Front side

EUT Back side

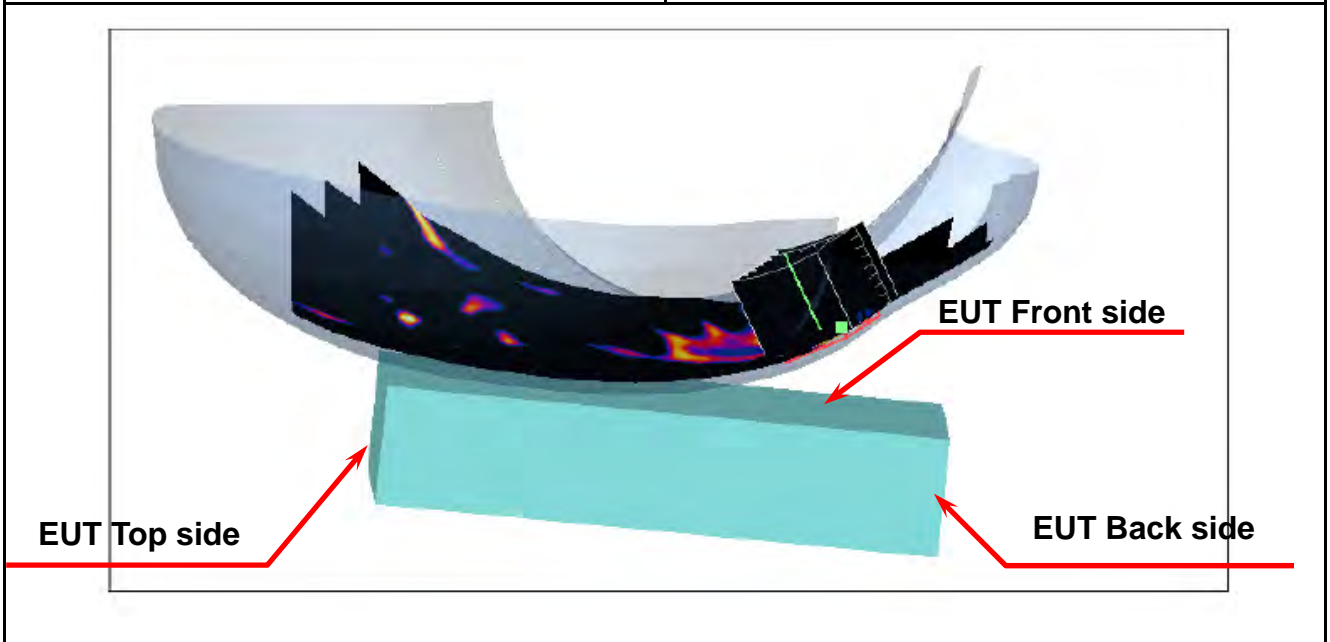
Right Head Setup



Figure 2. Right Head SAR Test Setup (Cheek)



Figure 3. Right Head SAR Test Setup (Tilted)



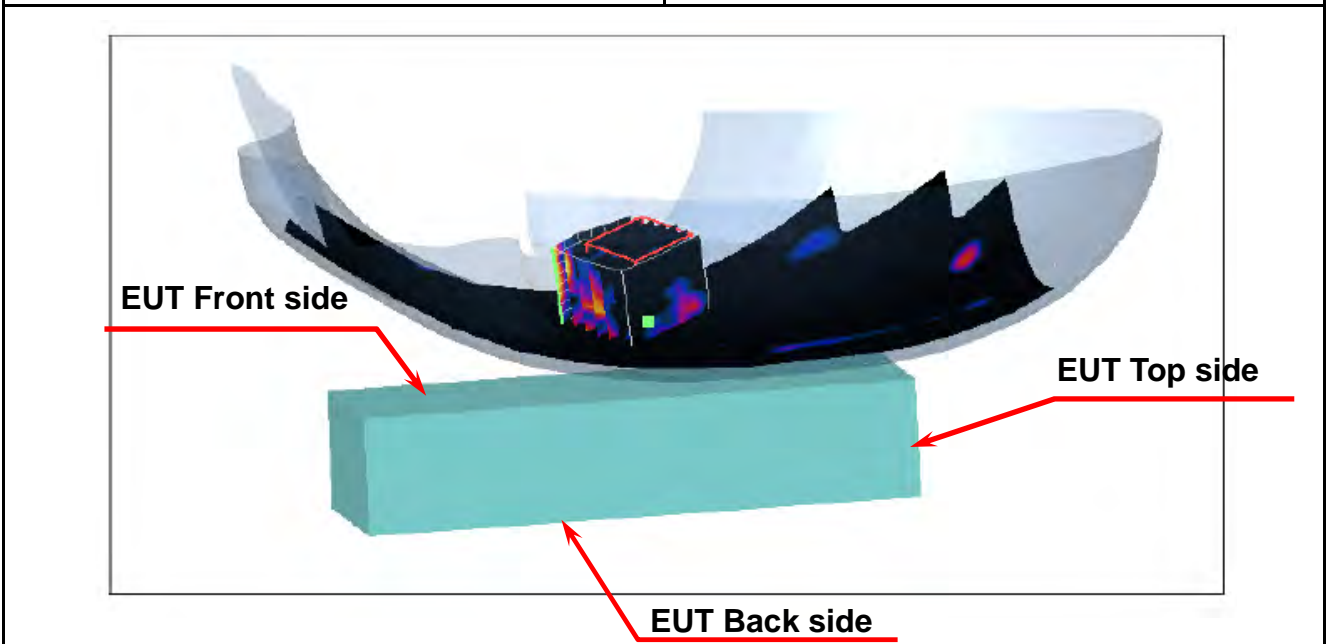
Left Head Setup



Figure 4. Left Head SAR Test Setup (Cheek)



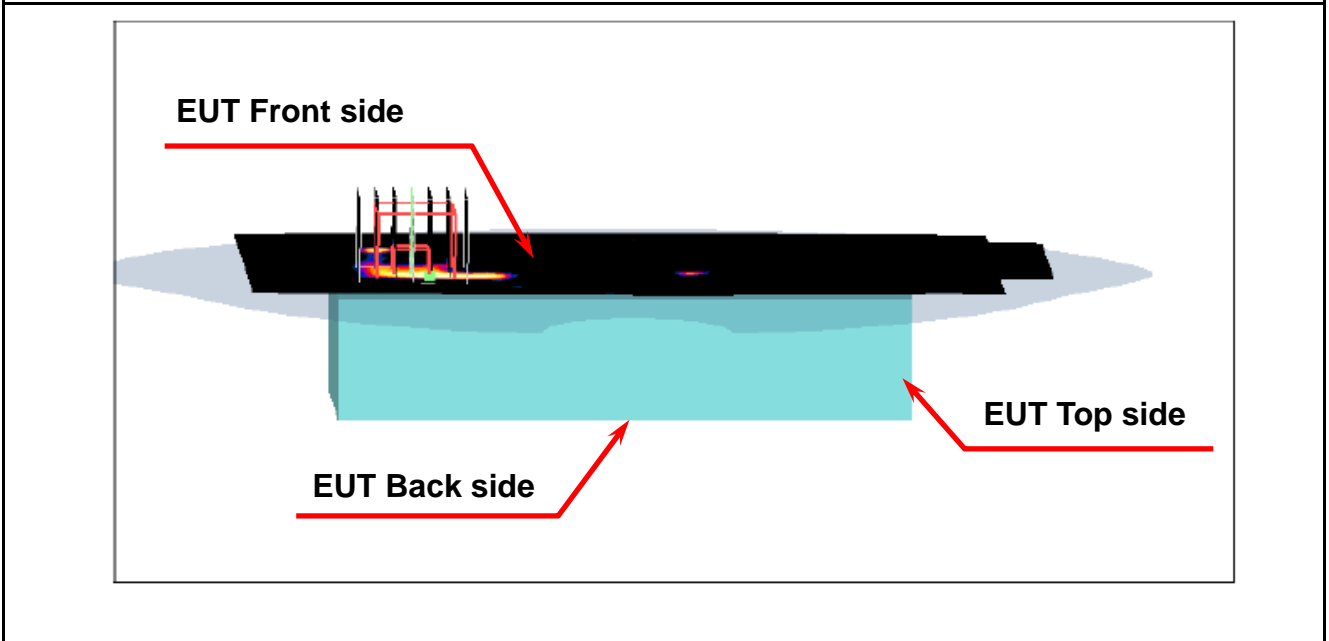
Figure 5. Left Head SAR Test Setup (Tilted)



Body Setup (EUT with belt-clip and headset, the front surface to phantom 0mm)



Figure 6. Body SAR Test Setup (Flat Section)



Body Setup (EUT with belt-clip and headset, the back surface to phantom 0mm)



Figure 7. Body SAR Test Setup (Flat Section)

