

# **NtPLUS**

## **User Guide**

For  
Windows 98-SE®  
Windows ME®  
Windows 2000®  
Windows XP®



**Copyright 2002, Main.net Communications Ltd.  
All rights reserved.**

All contents of this document are subject to change without notice and do not represent a commitment on the part of Main.net or its subsidiaries. Every effort is made to ensure the accuracy of this information. However due to ongoing product improvements and revisions, Main.net and its subsidiaries cannot guarantee the accuracy of this material, nor can it accept responsibility for errors or omissions. No guaranties of any nature are extended by the information contained in these copyrighted materials. Usage or implementation of any one of the concepts, applications, or ideas described in this document may infringe one or more patents or other intellectual property rights owned by Main.net, its subsidiaries and/or third parties. Procurement of appropriate intellectual property rights and license is solely the responsibility of the system implementer. The software referred to in this document is provided under a Software License Agreement. This document is confidential, and any copying or disclosure of its contents is strictly prohibited, unless prior written consent is obtained from Main.net Communications Ltd. or its subsidiaries. PLUS, Power Line Ultimate System, AmrPLUS, CuPLUS, ExPLUS, NmPLUS, MACPLUS, NiPLUS, PLUServer, PcPLUS, HotPLUS, RcPLUS, RgPLUS, RpPLUS, RuPLUS, TelPLUS, are trademarks of Main.net Communications. Other company, brand, product, and other service names are the trademarks or registered trademarks of their respective holders.

P/N: DOC10001  
Revision: A00

### **Safety Precautions**

Read these instructions carefully.

- 10 Unplug this product from the wall outlet before cleaning. Do not use liquid cleaners or aerosol products. Use a damp cloth only.
- 11 Do not use this unit near water.
- 12 Do not place this unit on an unstable cart, stand or table. The unit may fall, causing serious damage to the product.
- 13 Ensure reliable operation of the product and protect it from overheating. The unit is not to be placed near or over a radiator or heat register, or in a built-in installation.
- 14 This product is to be operated from the type of power indicated on the label.
- 15 Do not allow anything to rest on the power cord. Do not locate the unit where people will walk on the power cord.
- 16 Do not use an extension cord with this unit. The extra length will change the impedance characteristics and will degrade performance.
- 17 Never push any objects into the cabinet slots as they may touch dangerous voltage points or short out parts that could result in a fire or electrical shock. Never spill liquids of any type on the product.
- 18 Do not attempt to service this product yourself, as opening and removing covers may expose you to dangerous voltages. Refer all servicing to qualified personnel.
- 19 Unplug this product from the wall outlet and refer it to qualified service personnel under the following conditions:
  - a. When the power cord is damaged or frayed.
  - b. If liquid has been spilled into the unit.
  - c. If the product has been exposed to rain or water.
  - d. If the unit has been dropped or the cabinet has been damaged.

### **CE Marking Warning**

In a domestic environment, this product may cause interference in which case the user may be required to take adequate measures. This equipment generates nuisance and can radiate radio frequencies energy and, if not installed and used in accordance with the instructions in the user guide, may cause interference to radio communications.

### **FCC Marking Warning**

The following information needs to be added to our manual.  
Furthermore every NT unit that is delivered to the US market needs to be issued with this updated manual:

This equipment has been tested and found to comply with the limits for a Class B digital device, pursuant to Part 15 of the FCC Rules. These limits are designed to provide reasonable protection against harmful interference in a residential installation. This equipment generates, uses and can radiate radio frequency energy and, if not installed and used in accordance with the instructions, may cause harmful interference to radio communications. However, there is no guarantee that interference will not occur in a particular installation. If this equipment does cause harmful interference to radio or television reception, which can be determined by turning the equipment off and on, the user is encouraged to try to correct the interference by one or more of the following measures:

- Reorient or relocate the receiving antenna.
  - Increase the separation between the equipment and receiver.
  - Connect the equipment into an outlet on a circuit different from that to which the receiver is connected.
  - Consult the dealer or an experienced radio/TV technician for help.
- Caution - Any changes or modifications not expressly approved by Main.net could void the user's authority to operate the equipment.

## Table of Contents

<b>1</b>	<b>Introduction.....</b>	<b>5</b>
1.1	How to use this guide .....	5
1.2	System Requirements .....	5
1.3	NtPLUS Accessories.....	5
1.4	The NtPLUS Communication .....	6
1.4.1	USB or Ethernet Socket Verification .....	6
<b>2</b>	<b>Ethernet Cable Installation.....</b>	<b>7</b>
<b>3</b>	<b>USB Cable Installation.....</b>	<b>9</b>
3.1	Windows 98-SE/Windows ME.....	9
3.1.1	Installation .....	9
3.1.2	Installation Verification .....	18
3.1.3	Network Configuration Parameters.....	19
3.2	Windows 2000 .....	20
3.2.1	Installation .....	20
3.2.2	USB Communication Verification .....	27
3.2.3	Network Parameters Configuration .....	28
3.3	Windows XP.....	29
3.3.1	Installation .....	29
3.3.2	USB Communication Verification .....	37
3.3.3	Network Parameters Configuration .....	37
<b>4</b>	<b>Troubleshooting Installation Problems.....</b>	<b>38</b>
4.1	Windows 98-SE/Windows ME Installation ...	39
4.2	Windows 2000 Installation.....	43
4.3	Windows XP Installation .....	49
<b>5</b>	<b>Frequently Asked Questions.....</b>	<b>54</b>



## 1 Introduction

Welcome to the Main.net NtPLUS (Power Line Ultimate System) unit. The Main.net PLUS (Power Line Ultimate System) technology utilizes the power line from every electricity outlet at home or office to establish a fast Internet connection with your chosen Internet Service Provider (ISP).

### 1.1 How to use this guide

This guide provides information on the NtPLUS (see *Chapter 1 Introduction*), the NtPLUS cable connections over different Microsoft operating systems (see *Chapter 2 Ethernet Cable Installation* and *Chapter 3 USB Cable Installation*), and the NtPLUS troubleshooting (see *Chapter 4 Troubleshooting Installation Problems*).

### 1.2 System Requirements

- 1) Pentium II 350 MHz or above.
- 2) Microsoft Windows 98 SE® or Windows Me® or Windows 2000® or Windows NT® operation system.
- 3) Microsoft Windows 98 SE® or Windows Me® or Windows 2000® or Windows NT® (to be applied with Ethernet cable connection only) installation CD or disk.

### 1.3 NtPLUS Accessories

- 1) A cable to plug the NtPLUS to the electricity outlet
- 2) Main.net NtPLUS disk or CD

#### 1.4 The NtPLUS Communication

The NtPLUS connects the PC to the electricity outlet to enable communication via the electricity outlet and over the power line. The NtPLUS supports the following communication cable connections:

- ?? **Ethernet Cable Connection (10BaseT)** – Cable not supplied with the NtPLUS (see *Chapter 2 Ethernet Cable Connections* for further details)
- ?? **USB Cable Connection (not supplied)** – Cable supplied with the NtPLUS (see *Chapter 3 USB Cable Installation* for further details)

##### 3.3.1 USB or Ethernet Socket Verification

Prior to any cable connection installation verify which connection type your PC is equipped with. Following is the socket verification procedure:

- 1) Check the PC back panel for a USB (see figures in *Chapter 3 Section 3.1 Windows 98-SE/Windows ME*) or Ethernet cable (see figures in *Chapter 2 Ethernet Cable Installation*) sockets.
- 2) If your PC is equipped with an Ethernet cable socket refer to *Chapter 2 Ethernet Cable Installation* for the Ethernet installation procedure.
- 3) If your PC is equipped with a USB cable socket refer to the section that refers to your PC operating system in *Chapter 3 USB Cable Installation* for the USB cable installation procedure.

## 2 Ethernet Cable Installation

The following chapter describes the NtPLUS Ethernet 10BaseT cable connection installation procedure. The installation procedure applies to the following operating systems:

- 1) Windows 98-SE® and Windows ME®
- 2) Windows 2000®
- 3) Windows NT®
- 4) Windows XP®

To install the Ethernet 10BaseT cable:

- 1) Plug the NtPLUS into the electricity outlet using the 85-250V AC 48-63Hz-electricity outlet cable. The NtPLUS Red and Green lights are **ON**. Then the Red light is **OFF** and the Green light begins to blink. This is followed by a stable Green light.

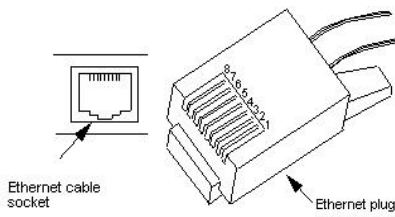
**Note:** If the Red light is blinking refer to your Internet Service Provider (ISP). See *Chapter 5 Frequently Asked Questions* for further details.

- 2) Lightly insert one end of the Ethernet 10BaseT cable plug (see enlarged right drawing) into the NtPLUS Ethernet socket (see left drawing) until an audible click is heard.

**Note:** A USB cable usually bears the below figure:







- 3) Lightly insert the other end of the Ethernet 10BaseT cable plug (see above drawing) into the PC Ethernet socket (usually located at the computer backend) until an audible click is heard.
- 4) Run your browser or e-mailing software to verify Internet accessibility. In case of Internet accessibility problems see *Chapter 4 Troubleshooting Installation Problems* for counter measures.

### 3 USB Cable Installation

This chapter describes the NtPLUS USB cable connection installation on Windows 98-SE, Windows ME, Windows 2000 and Windows XP operating systems.

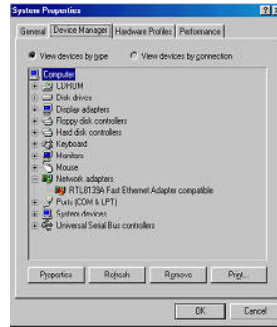
**Note:** The NtPLUS does not support the USB cable connection under the Windows NT® operating systems.

#### 3.1 Windows 98-SE/Windows ME

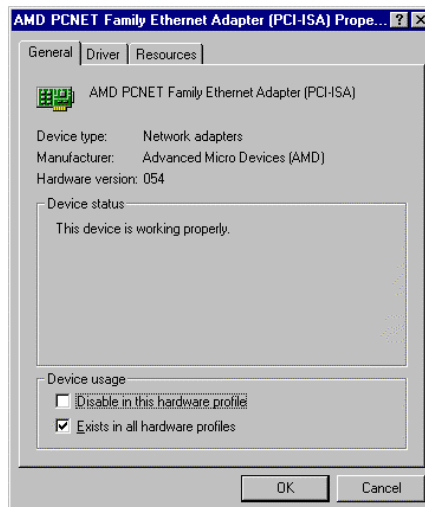
**Note:** Before plugging the PLUS modem to your PC, disable your Ethernet Card (if applicable). Otherwise, see the procedure following step 6 in this section.

##### 3.1.1 Installation

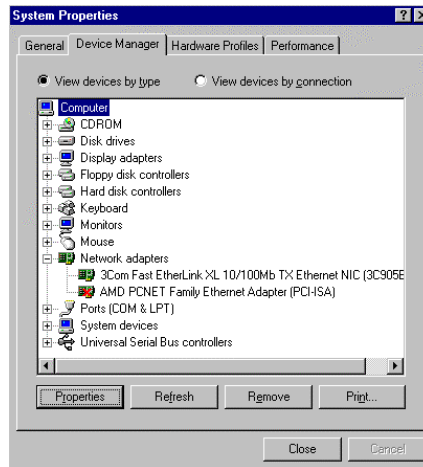
- 1) Choose **Start** from the Desktop screen, and then **Settings** from the pull-up menu.
- 2) Choose **Control Panel**. Choose **System** from the Control Panel screen. The System Properties screen appears. Select the "**Device Manager**" tab.



- 3) Choose the Network Adapters branch to expand it (a “minus” sign appears next to the expanded Network adapters).
- 4) Select the Ethernet Adapter and choose **Properties**. The **Ethernet Adapter Properties** screen appears.



- 5) Check the **Disable** in this hardware profile checkbox and choose **OK**. The **System Properties** screen appears with the Ethernet Adapter disabled (The AMD PCNET Family Ethernet Adapter in the below example).



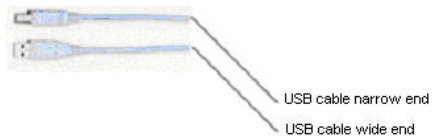
6) Choose **Close** to return to the Desktop screen.

To return to the USB cable installation procedure:

- 1) Plug the NiPLUS into the electricity outlet using the electricity outlet cable. The NiPLUS Red and Green lights are ON. Then the Red light is OFF and the Green light begins to blink. This is followed by a stable Green light.

**Note:** If the Red light is blinking refer to your Internet Service Provider (ISP). See *Chapter 5 Frequently Asked Questions* for further details.

- 2) Lightly insert the USB cable narrow end (see the photograph below) into the NiPLUS USB socket (see drawing below) until an audible click is heard.



PC USB socket

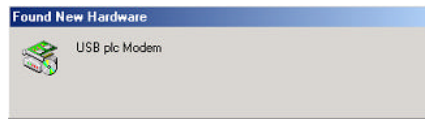


NiPLUS USB socket



- 3) Lightly insert the USB cable wide end (see photograph above) into the PC USB socket (usually located at the computer backend).

- 4) The **Found New Hardware** screen appears.



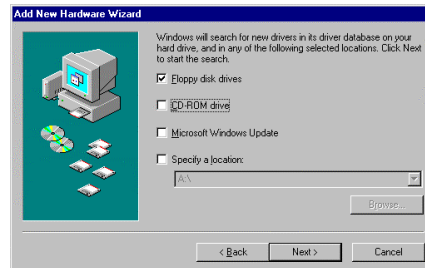
- 5) The **Add New Hardware Wizard** screen appears.



- 6) Choose **Next**. The following screen appears.



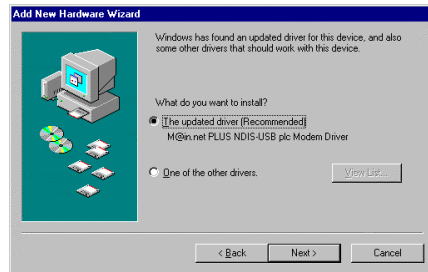
- 7) Select the “**Search for the best ...**” radio button and choose **Next**. The following screen appears.



- 8) Check the **Specify a location** checkbox. The **Browse** button is lit.
- 9) Insert the Main.net CD into the appropriate drive.



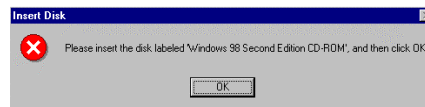
- 10) Choose **Browse**. The **Browse for Folder** screen appears. Choose the appropriate drive to expand its branch and select the **Win98se** folder.
- 11) Choose **OK** to return to the Add New Hardware Wizard screen.
- 12) Choose **Next**. The following screen appears.



- 13) Select the **“The updated drive (Recommended)...”** radio button and choose **Next**. The following screen appears (denoting drive A as the installation drive in the below example).



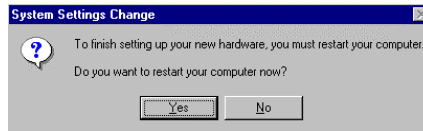
14) Choose **Next**. The following screen appears.



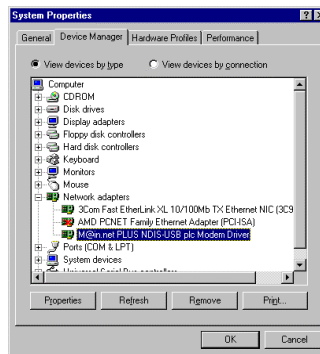
15) Insert the Windows 98 Second Edition (SE) installation CD into the CD-ROM drive and choose **OK**. The **Copying Files...** screen appears displaying the copying files process. Then the following screen appears.



- 16) Choose **Finish**. The **System Setting Change** screen appears.



- 17) Remove all CD and disks from their drives and choose **Yes**.
- 18) The computer restarts and the Desktop screen appears after approximately 1 minute.
- 3.1.2 Installation Verification
- 1) Choose **Start** from the Desktop screen, and then **Settings** from the pull-up menu.
  - 2) Choose **Control Panel**. Choose the **System** icon from the Control Panel screen. The **System Properties** screen appears. Select the **Device Manager** tab. The following screen appears (the properly installed driver is highlighted).



**Note:** If the properly installed device is not displayed see *Section 4.1 Windows 98SE/Windows ME Installation* for further details.

3) Choose **OK** to return to the Desktop screen.

### 3.1.3 Network Configuration Parameters

Consult your Internet Service Provider (ISP) or your system administrator for the network configuration parameters.

**Note:**

- 1) Restart your computer after inserting the network configuration parameters.
- 2) In case of USB cable disconnection see *Section 4.1 Windows 98SE/Windows ME Installation* for further details.

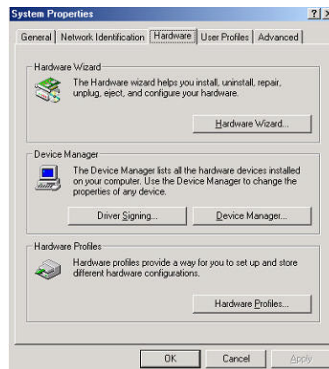
## 3.2 Windows 2000

### 3.2.1 Installation

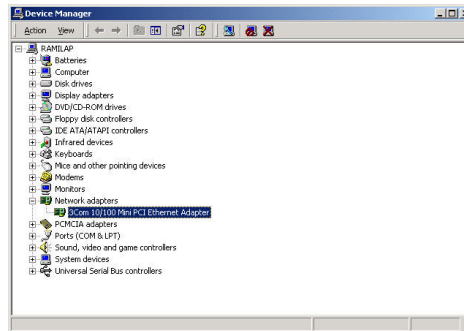
**Note:** Before plugging the PLUS modem to your PC, disable your Ethernet Card (if applicable). Otherwise, see the procedure following step 9 in this section.

#### Disabling the Ethernet Adapter

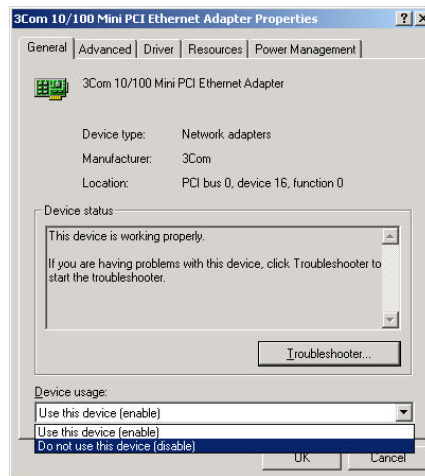
- 1) Choose **Start** from the Desktop screen and then **Settings** from the pull-up menu.
- 2) Choose **Control Panel**. The Control Panel screen appears. Choose the **System** icon from the **Control Panel** screen. The **System Properties** screen appears.



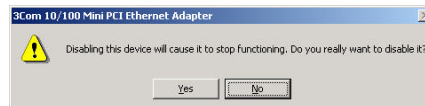
- 3) Choose “**Device Manager**”. The **Device Manager** screen appears.



- 4) Choose the Network adapters branch to expand it (a “minus” sign appears next to the Network adapters). Select to highlight the Ethernet Adapter.
- 5) Choose **Action** from the Device Manager screen menu bar and then **Properties** from the drop-down menu. The **Ethernet adapter Properties** screen appears.
- 6) Select **Do not use this device (disable)** from the Device usage drop-down menu.



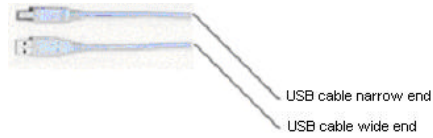
- 7) Choose **OK**. The **Ethernet Adapter Warning** screen appears.



- 8) Choose **Yes** to disable the Ethernet Adapter. The **Device Manager** screen appears with Ethernet adapter disabled.
- 9) Close the Device Manager window.

To return to the USB cable installation procedure:

- 2) Plug the NiPLUS into the electricity outlet using the electricity outlet cable.
- 3) Lightly insert the USB cable narrow end (see the photograph below) into the NiPLUS USB socket (see drawing below) until an audible click is heard.



PC USB socket

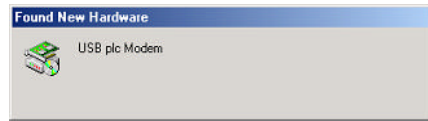


NiPLUS USB socket



- 4) Lightly insert the USB cable wide end (see photograph above) into the PC USB socket (usually located at the computer backend).
- 5) The **Found New Hardware** screen appears.





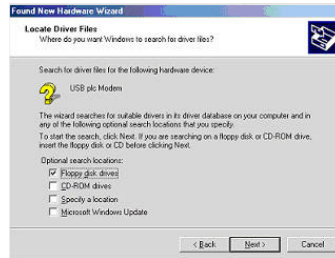
- 6) Insert the Main.net disk or CD into the appropriate drive.



- 7) Choose **Next**. The following screen appears.



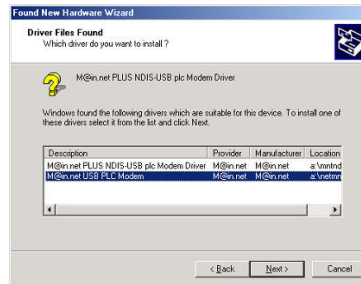
- 8) Select the “**Search for a suitable driver..**” radio button and choose **Next**. The following screen appears.



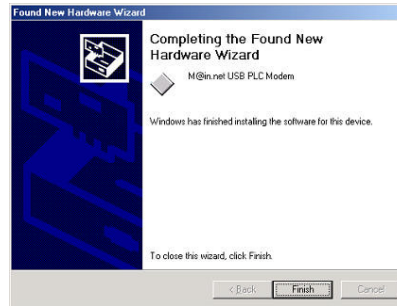
- 9) Insert the installation CD into the appropriate drive. Check the screen checkbox to match the CD drive and choose **Next**. The following screen appears.



10) Choose **Next**. The following screen appears.



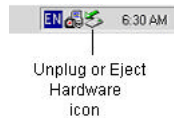
- 11) Select to highlight the "M@in.net USB PLC Modem". Verify that the highlighted disk or CD location (in this example, drive A) matches the CD installation drive. Choose **Next**. The following screen appears.



- 12) Choose **Finish** to return to the Desktop screen.

### 3.2.2 USB Communication Verification

Check the Desktop taskbar for the "Unplug or Eject Hardware" icon (see figure below).



**Note:** The absence of the **Unplug or Eject Hardware** icon or its appearance with a RED X sign indicates an installation problem see *Section 4.2 Windows 2000 Installation* for further details.

### 3.2.3 Network Parameters Configuration

Consult your Internet Service Provider (ISP) for the network configuration parameters.

**Note:**

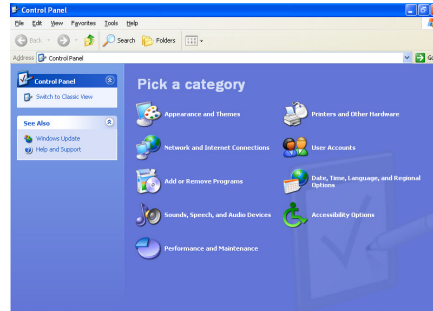
- 1) Restart your computer after inserting the network configuration parameters.
- 2) In case of USB cable disconnection see *Section 4.2 Windows 2000 Installation* for further details.

### 3.3 Windows XP

#### 3.3.1 Installation

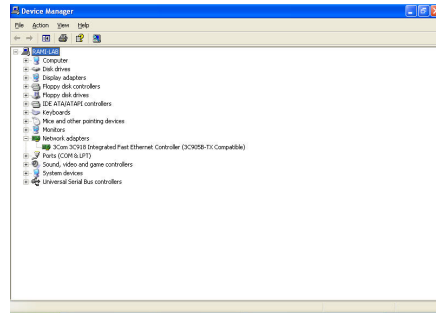
**Note:** Before plugging the PLUS modem to your PC, disable your Ethernet Card (if applicable). Otherwise, see the procedure following step 7 in this section.

- 1) Choose **Start** and then **Control Panel**. The **Control Panel** screen appears.

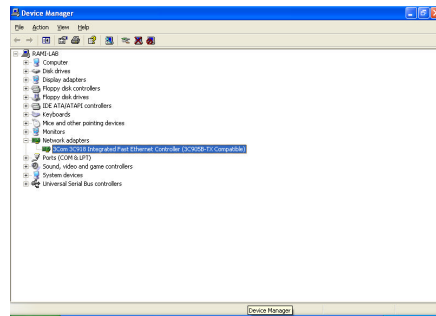


**Note:** If the Control Panel appears in the “**Pick a category**” view mode choose “**Switch to Classic View**” mode. The **Control Panel Classic** view appears.

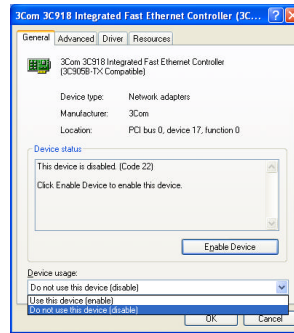
- 2) Choose **System**. The **System Properties** screen appears. Select the **Hardware** tab. The Hardware screen tab appears.
- 3) Choose the **Device Manager**. The Device Manager screen appears.



- 4) Choose the **Network adapters** branch to expand it. A “minus” sign appears next to the Network adapters. Select to highlight the Ethernet adapter.

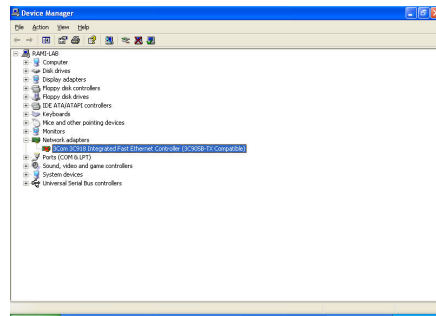


- 5) From the **Action** drop-down menu choose **Properties**. The **Ethernet Adapter Properties** screen appears.
- 6) Choose **Do not use this device (disable)** from the Device usage drop-down menu.



- 7) Choose **OK**. The Device Manager screen appears with the Ethernet adapter disabled.





7) Close the Device Manager screen.

To return to the USB cable installation procedure:

- 1) Plug the NtPLUS into the electricity outlet using the electricity outlet cable.
- 2) Lightly insert the USB cable narrow end (see the photograph below) into the NtPLUS USB socket (see drawing below) until an audible click is heard.



USB cable narrow end

USB cable wide end

PC USB socket



NiPLUS USB socket



- 3) Lightly insert the USB cable wide end (see photograph above) into the PC USB socket (usually located at the computer backend).
- 4) A pop-up screen notifying of a new detected hardware appears.
- 5) Double-click on the pop-up screen. The **Found New Hardware Wizard** screen appears with its default recommendation.



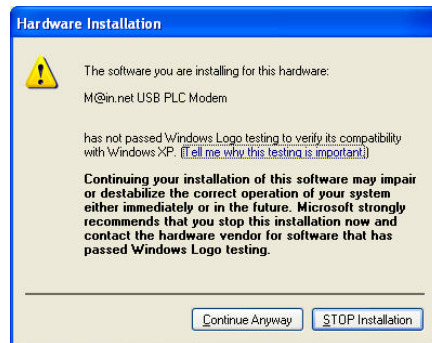
- 6) Select “**Install from a list or specific location (Advanced)**” and choose **Next**. The Found New Hardware Wizard screen appears.
- 7) Select “**Include this location in the search**”. The **Browse** field is highlighted.
- 8) Insert the Main.net USB PLC USB installation CD into the CD drive.
- 9) Choose **Browse**. The Browse For Folder screen appears.



- 10) Select **My Computer** and then select to highlight the installation Main.net USB PLC CD drive.
- 11) Choose **OK**. The Found New Hardware Wizard appears.

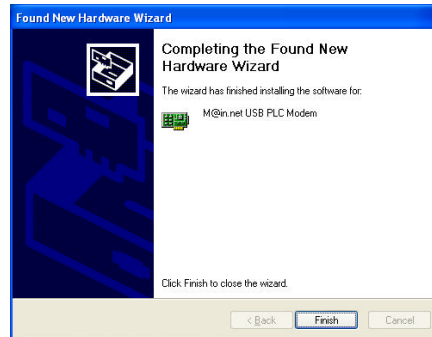


12) Choose **Next**. After a while the Hardware Installation screen appears.



**Note:** The Main.net USB PLC Modem is in the process of a Microsoft Windows XP logo testing. Main.net suggests choosing **Continue Anyway**.

- 13) Choose **Continue Anyway**. After a while (between 30sec-1min) the New Hardware Found Wizard screen appears.



- 14) Choose **Finish**. The popup announcing that a new hardware has been successfully installed and ready to use appears.
- 15) Close the Control Panel screen to return to the desktop screen.
- 16) The following icon appears in the taskbar at the bottom of the desktop screen.

### 3.3.1 USB Communication Verification

Check the Desktop taskbar for the “**Unplug or Eject Hardware**” icon:



**Note:** The following indicators denote an installation or a cable disconnection problem

- 1) A missing **Unplug or Eject Hardware** icon
- 2) A pop-up **USB Device Not Recognized!**

See *Section 4.3 Windows XP Installation* for further details.

### 3.3.3 Network Parameters Configuration

Consult your Internet Service Provider (ISP) for the network configuration parameters.

**Note:** In case of USB cable disconnection see *Section 4.3 Windows XP Installation* for further details.

## 4 Troubleshooting Installation Problems

An NtPLUS USB unsuccessful connection installation may result in an Internet accessibility problem.

**Note:** Internet accessibility problems could result from reasons apart from the NtPLUS improper installation. The user is required to further inspect other probable causes.

Using Windows uninstalling tools to uninstall the NtPLUS USB cable connection leaves the Windows registry as is. The Windows registry, that still keeps a record of the NtPLUS USB cable connection installation, prevents any further reinstallation of the NtPLUS USB cable connection application.

The NtPLUS USB uninstaller removes the USB interface application from the user PC and clears the relevant entries from the Windows operation system (Windows 98-SE/ME/2000) registry. The Windows registry will then enable a successful reinstallation of the NtPLUS USB cable connection.

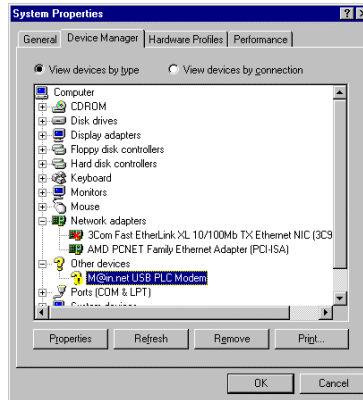
This chapter consists of several sections describing troubleshooting procedures relating to the installation under the following operating systems:

- 1) Windows 98-SE® and Windows ME®
- 2) Windows 2000®
- 3) Windows XP®

#### 4.1 Windows 98-SE/Windows ME Installation

##### Problem Indicator

- 1) After installing the NtPLUS USB cable connection (see *Chapter 2 USB Cable Installation*) choose **Start** from the Windows Desktop, select **Settings** and then **Control Panel** from the pop-up list. The **Control Panel** screen appears.
- 2) Choose the **System** icon. The **System Properties** screen appears.
- 3) Select the **Device Manager** tab. The **Device Manager** screen appears. Select to expand the **Other devices** branch. A question mark appears next to the **M@in.net USB PLC Modem** device indicating a problem.

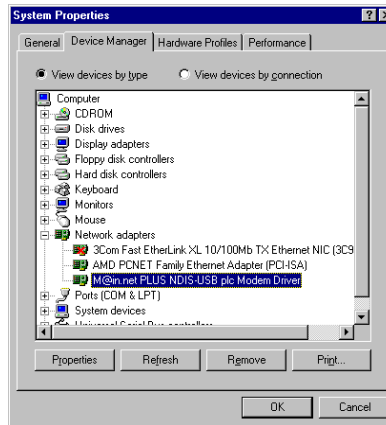




**Note:** This screen also denotes a disconnected USB cable. Verify that the USB cable connections to the PC and the Mainnet PLC USB Modem unit well made. See *A USB Cable Disconnection Problem* in this section for further details.

#### Counter Measures

- 1) Choose **OK** to return to the Control Panel screen and close the Control Panel screen.
- 2) Unplug the USB cable from the NtPLUS USB socket.
- 3) Insert the Uninstaller CD into the appropriate drive.
- 4) Double-click the **My Computer** icon on the Desktop. The **My Computer** screen appears.
- 5) Double click the appropriate drive icon. The drive screen appears.
- 6) Choose **Clear98Reg** (with Windows ME choose **ClearMEReg**). The screen will turn black for an instant. The Clear98Reg (or the ClearMEReg) erases the relevant entries from the Windows registry to return it to its pre USB installation state.
- 7) Plug the narrow end of the USB cable back to the USB socket.
- 8) Repeat the NtPLUS USB cable installation procedure (see *Chapter 2 USB Cable Installation*).
- 9) Choose **Start** from the Windows Desktop, select **Settings** and then **Control Panel** from the pop-up list. The **Control Panel** screen appears.
- 10) Choose the **System** icon. The **System Properties** screen appears.
- 11) Choose the **Device Manager** tab. The **Device Manager** screen appears with **M@in.net USB PLC Modem** device indicating that the NtPLUS USB cable is properly installed.

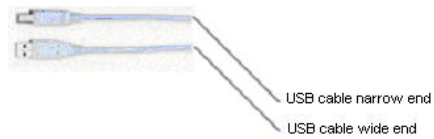


- 12) If the problem-indicating screen reappears repeat steps 1 to 12 above.

#### A USB Cable Disconnection Problem

As mentioned in the previous section the same System Properties screen appears when a USB cable disconnects after the installation. Verify that the USB cable is properly connected. If not perform the following:

- 1) Plug the NtPLUS into the electricity outlet using the electricity outlet cable.
- 2) Lightly insert the USB cable narrow end (see the photograph below) into the NtPLUS USB socket (see drawing below) until an audible click is heard.



PC USB socket



NiPLUS USB socket



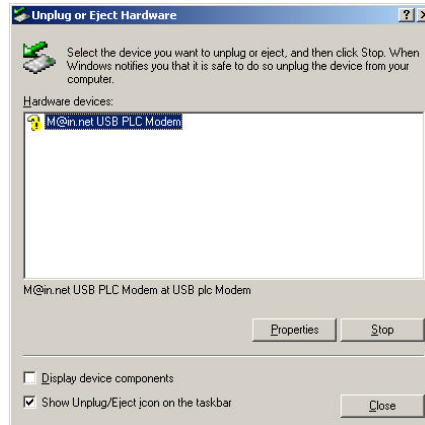
- 3) Lightly insert the USB cable wide end (see photograph above) into the PC USB socket (usually located at the computer backend).
- 4) Repeat steps 1-3 in the Problem Indicator section. If the system Properties screen appears with the same indication refer to the **Counter Measures** in this section.

## 4.2 Windows 2000 Installation

### Problem Indicator

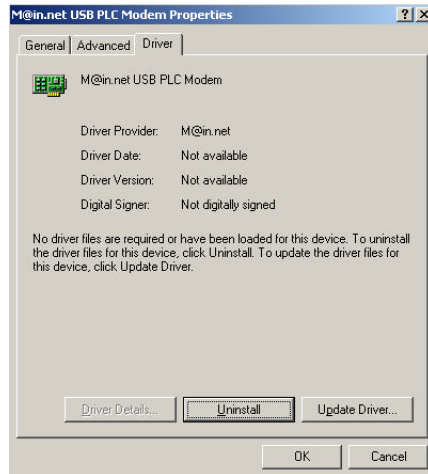
As mentioned (see Section 3.2.3 *USB Communication Verification*) the absence of the **Unplug or Eject Hardware** icon or its appearance with a RED X sign indicates an installation problem.

Double-click the **Unplug or Eject Hardware** icon at the desktop taskbar. The **Unplug or Eject Hardware** screen appears with a question mark next to the driver name denoting a problem.



#### Counter Measures

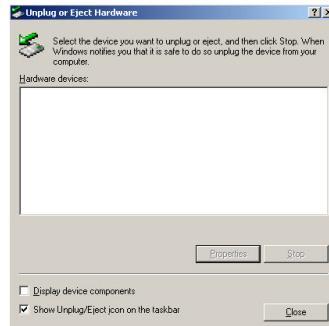
- 1) Choose **Properties**. The **M@in.net USB PLC Modem Properties** screen appears.
- 2) Select the **Driver** tab. The following screen appears.



- 3) Choose **Uninstall**. The **Confirm device Removal** screen appears.

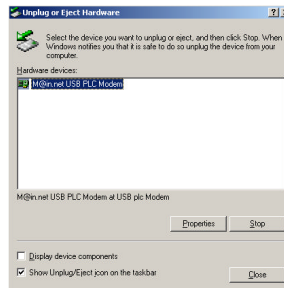


4. Choose **OK**. The Windows 2000 removes the NtPLUS USB cable driver. The Desktop screen appears.
5. Double-click the **Unplug or Eject Hardware** icon at the taskbar. The **Unplug or Eject Hardware** screen appears displaying the absence of the NtPLUS USB cable driver.



6. Choose **Close** to return to the Desktop screen.

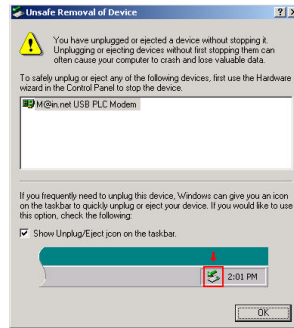
7. Unplug the USB narrow end cable from the NtPLUS USB socket.
8. Insert the Uninstaller disk or CD into their appropriate drives.
9. Double-click the **My Computer** icon on the Desktop. The **My Computer** screen appears.
10. Double click the appropriate drive icon. The drive icon screen appears.
11. Double-click the **ClearNTReg** icon. The screen will turn black for an instant. The ClearNTReg erases the Windows 2000 registry from the NtPLUS USB cable installation record.
12. Insert the USB cable back to the NtPLUS USB socket until an audible click is heard.
13. Repeat the "...USB cable installation procedure:" (following step 6 in *Section 3.2.1 Installation*).



If the problem persists (the screen denoting an unsuccessful installation appears) repeat the uninstalling procedure described in Section 4.2

### USB Cable Disconnection Problem

When a USB cable disconnects after the USB cable installation the following screen appears:



Verify that the USB cable is properly connected. If not perform the following:

- 1) Plug the NtPLUS into the electricity outlet using the electricity outlet cable.
- 2) Lightly insert the USB cable narrow end (see the photograph below) into the NtPLUS USB socket (see drawing below) until an audible click is heard.





PC USB socket



NtPLUS USB socket



- 3) Lightly insert the USB cable wide end (see photograph above) into the PC USB socket (usually located at the computer backend).

If the Unsafe Removal of Device screen reappears repeat the USB Cable Disconnection Problem section.

### 3.3 Windows XP Installation

#### Problem Indicator

As mentioned (see Section 3.3.3 *USB Communication Verification*) the indicators for a cable disconnection or an installation problem are:

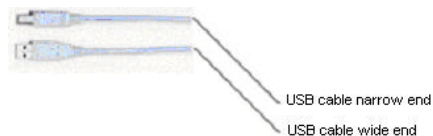
- A. A missing **Unplug or Eject Hardware** icon indicating a disconnected USB cable
- B. A pop-up **USB Device Not Recognized!** indicating an installation problem

#### Counter Measures

##### A) Disconnected USB Cable

Verify that the USB cable is properly connected. If not perform the following:

- 1) Plug the NiPLUS into the electricity outlet using the electricity outlet cable.
- 2) Lightly insert the USB cable narrow end (see the photograph below) into the NiPLUS USB socket (see drawing below) until an audible click is heard.



PC USB socket



NiPLUS USB socket



- 3) Lightly insert the USB cable wide end (see photograph above) into the PC USB socket (usually located at the computer backend).

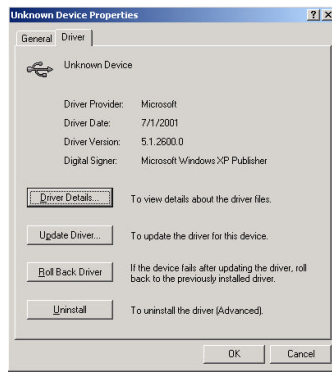
If the missing **Unplug or Eject Hardware** icon indicating a disconnected USB persists repeat Section A) Disconnected USB Cable.

#### B) Installation Problem

- 1) Click on the **USB Device Not Recognized!** pop-up.  
The USB Device Not Recognized screen appears.



- 2) Double-click on the **Unknown Device** branch. The Unknown Device Properties screen appears.
- 3) Choose the **Driver** tab. The Driver screen tab appears.



- 4) Choose the **Uninstall** button. The Confirm Device Removal screen appears.



- 5) Choose **OK**. The Windows XP removes the NtPLUS USB cable driver and the Device Not Recognized! screen appears.

- 6) Choose **Close** to return to the desktop screen.
- 7) Unplug the USB cable narrow end from the NtPLUS USB socket (see the picture and figure below).



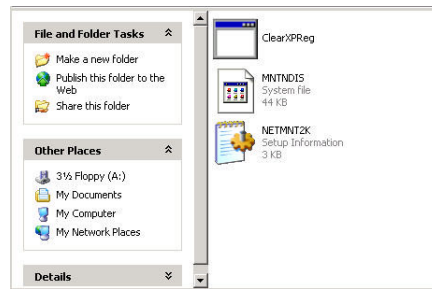
PC USB socket



NtPLUS USB socket



- 8) Insert the Main.net USB PLC USB installation CD into the CD drive.
  - 8) Choose **Start** and then **Control Panel**. The **Control Panel** screen appears.
- Note:** If the Control Panel appears in the "Pick a category" view mode choose "Switch to Classic View" mode. The **Control Panel Classic** view appears.
- 9) Select **My Computer**. The My Computer screen appears.
  - 10) Double click the CD drive icon. The drive icon screen appears displaying the Main.net USB PLC USB installation CD content.



- 11) Double-click the **ClearXPReg** icon. The screen will turn black for an instant. The ClearXPReg erases the Windows XP from the NtPLUS USB cable installation record.
- 12) Close the My Computer screen to return to the Windows XP Desktop screen.
- 13) Lightly insert the USB cable back to the NtPLUS USB socket until an audible click is heard.
- 14) Repeat the "...USB Cable Installation procedure:" (following step 7 in *Section 3.3.1 Installation*).

## 5 Frequently Asked Questions

- ?? *Windows found "USB Composite Device".*
1. From the "Device Manager" expand the "Universal Serial Bus controllers" and remove the "USB Composite Device".
  2. Unplug the USB cable and plug it into your modem to start the Plug and Play (PnP) process.
- ?? *Windows 2000 opens a warning window when I unplug the USB cable modem.*  
Plug the USB cable again and click OK.
- ?? *Can I use Dialup Adapter with the PLUS Modem?*  
Yes you can, but to gain access to the network or to the Internet with the PLUS modem you will need to disable the Dialup Adapter from the "Device Manager".
- ?? *Can I use other USB devices with the PLUS Modem?*  
Yes you can, as long as they are not configured as Network Adaptors.
- ?? *How fast is USB?*  
Full speed USB devices signal at 12Mb/s, while low speed devices use a 1.5Mb/s.  
(To learn more on the USB refer to [www.usb.org](http://www.usb.org))
- ?? *Do I need to turn off the NtPLUS when I turn off my PC?*  
No, your NtPLUS can be turned OFF or ON regardless of whether your PC is ON or OFF.

?? *My Internet connection is cut off.*

1. Check the NtPLUS connections to the electricity outlet.
2. Check the USB cable connection between your PC and the PLUS unit.
3. Verify that the electricity supply isn't cutoff.

?? *I have installed an Ethernet cable connection but I cannot surf or send and receive my e-mails.*

1. Check the NtPLUS connections to the electricity outlet.
2. Check the Ethernet cable connection between your PC and the NtPLUS unit.
3. Verify that the electricity supply isn't cutoff.
4. Consult your Internet Service Provider (ISP).

?? *I have installed my NtPLUS and the Red light is blinking.*

A blinking Red light (quick or moderate rated blinking) indicates Internet connection loss. Refer to your Internet Service Provider (ISP) for assistance.