
EUT: MLx Handle 13.56 MHz FCC ID: QLXHFHANDLE FCC Title 47 CFR Part 15 Date of issue: 2016-11-15

**Annex acc. to FCC Title 47 CFR Part 15
relating to
TeraTron GmbH
MLx Handle 13.56 MHz**

Annex no. 2

Internal Photographs

**Title 47 - Telecommunication
Part 15 - Radio Frequency Devices
Subpart C – Intentional Radiators
ANSI C63.4-2014
ANSI C63.10-2013**

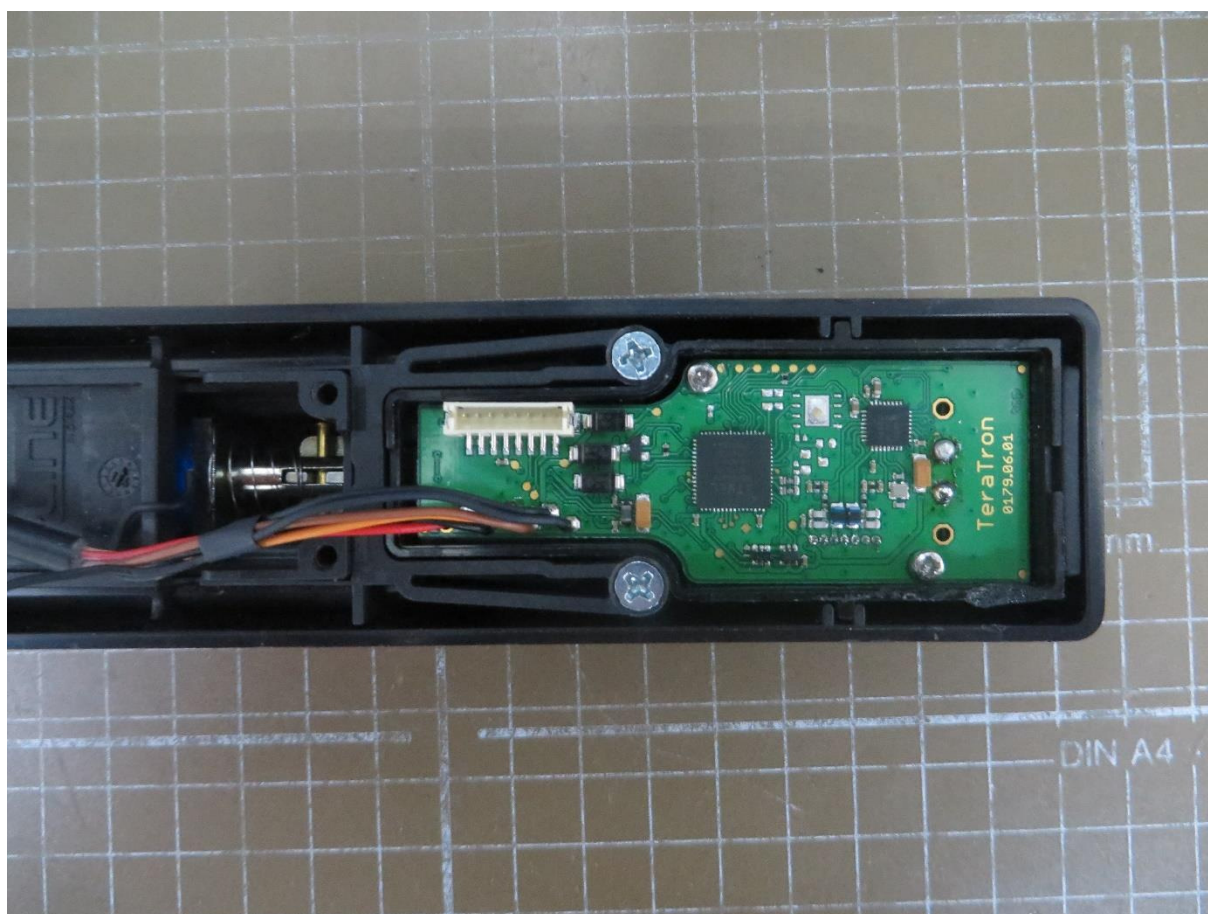


Deutsche
Akkreditierungsstelle
D-PL-12053-01-00

EUT: MLx Handle 13.56 MHz FCC ID: QLXHFHANDLE FCC Title 47 CFR Part 15 Date of issue: 2016-11-15

Photographs of the test equipment (EUT) – Internal Construction Upper side

The equipment shall be opened only after type testing is completed and photographs of the internal construction shall be made.



EUT: MLx Handle 13.56 MHz FCC ID: QLXHFHANDLE FCC Title 47 CFR Part 15 Date of issue: 2016-11-15

Photographs of the test equipment (EUT) - Internal Construction Lower side

The equipment shall be opened only after type testing is completed and photographs of the internal construction shall be made.

