



Figure 1 - Inside top cover



Figure 2 - Inside bottom plate

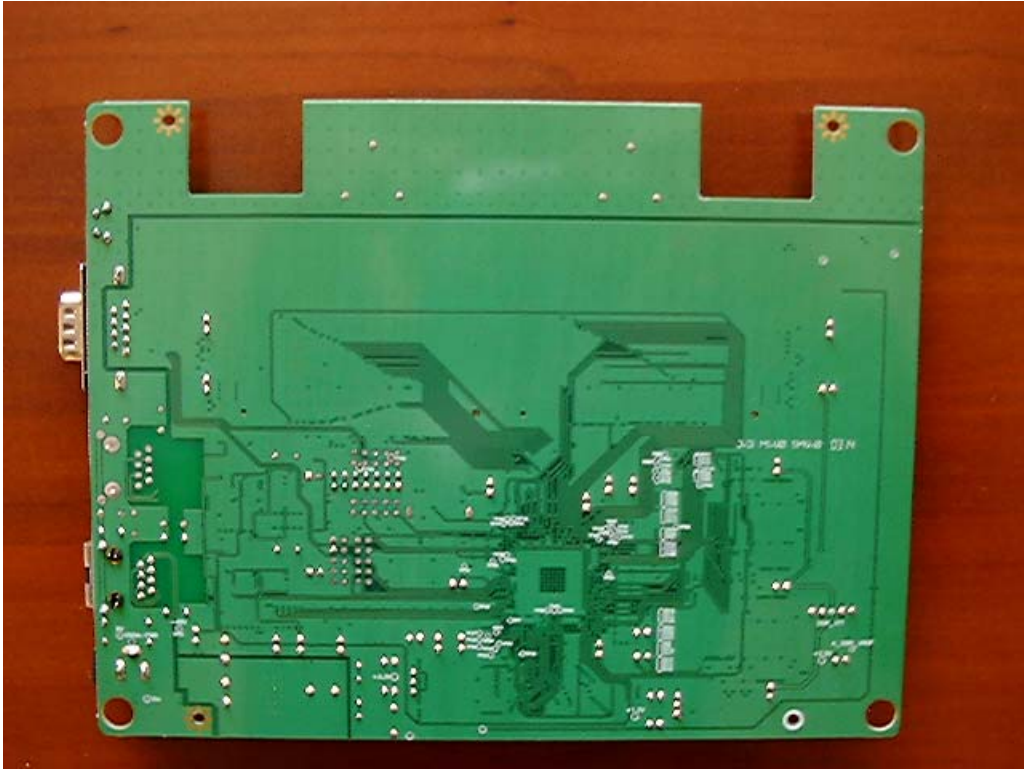


Figure 3 - Digital board bottom



Figure 4 - Digital board with radios

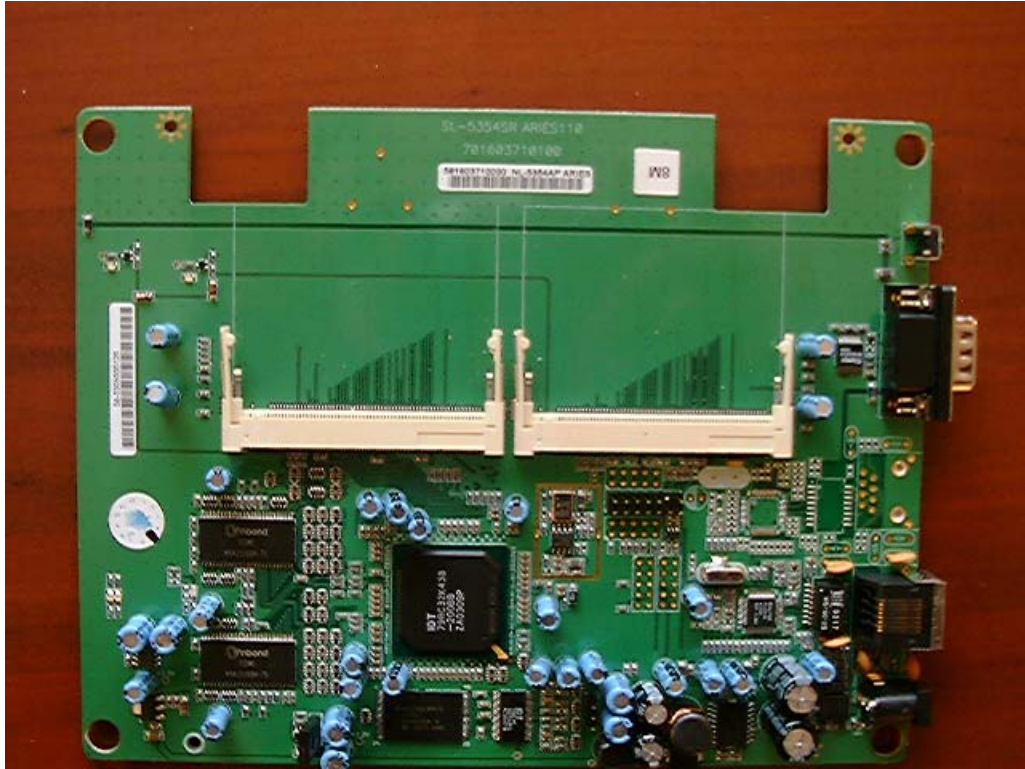


Figure 5 - Digital board without radios



Figure 6 - Digital board



Figure 7 - Side of digital board



Figure 8 - Side of Digital board -2

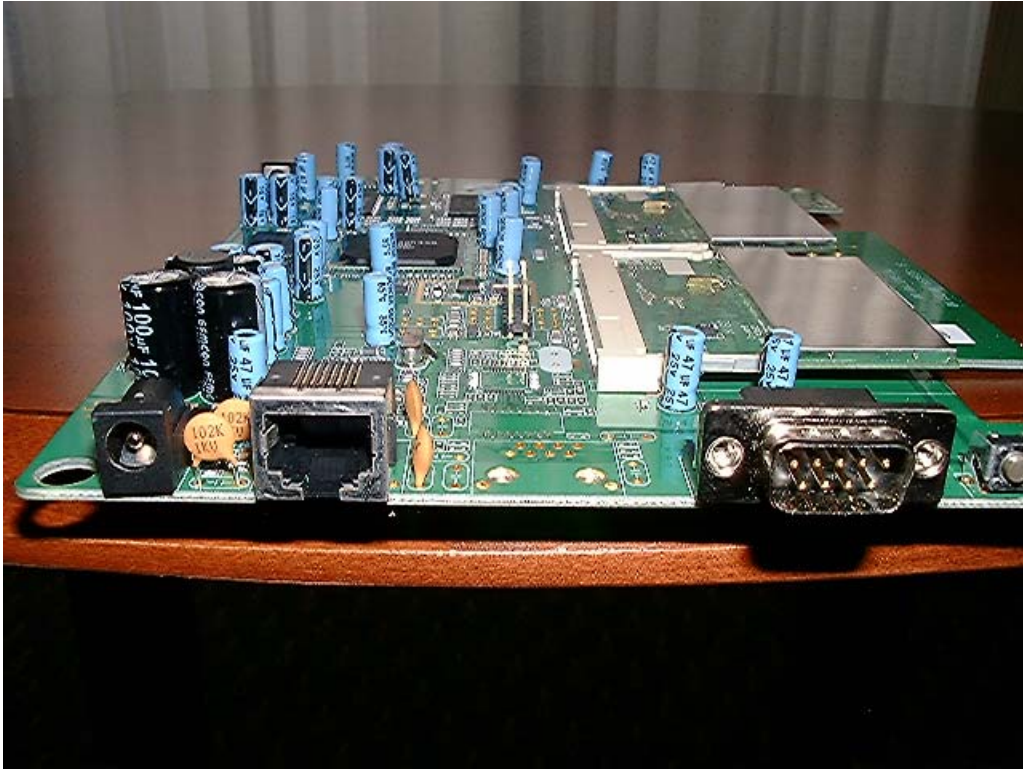


Figure 9 - Power, LAN, RS-232



Figure 10 - Cable with RF choke



Figure 11 - Radio card bottom



Figure 12 - Radio card bottom-2



Figure 13 - Radio card top with shield

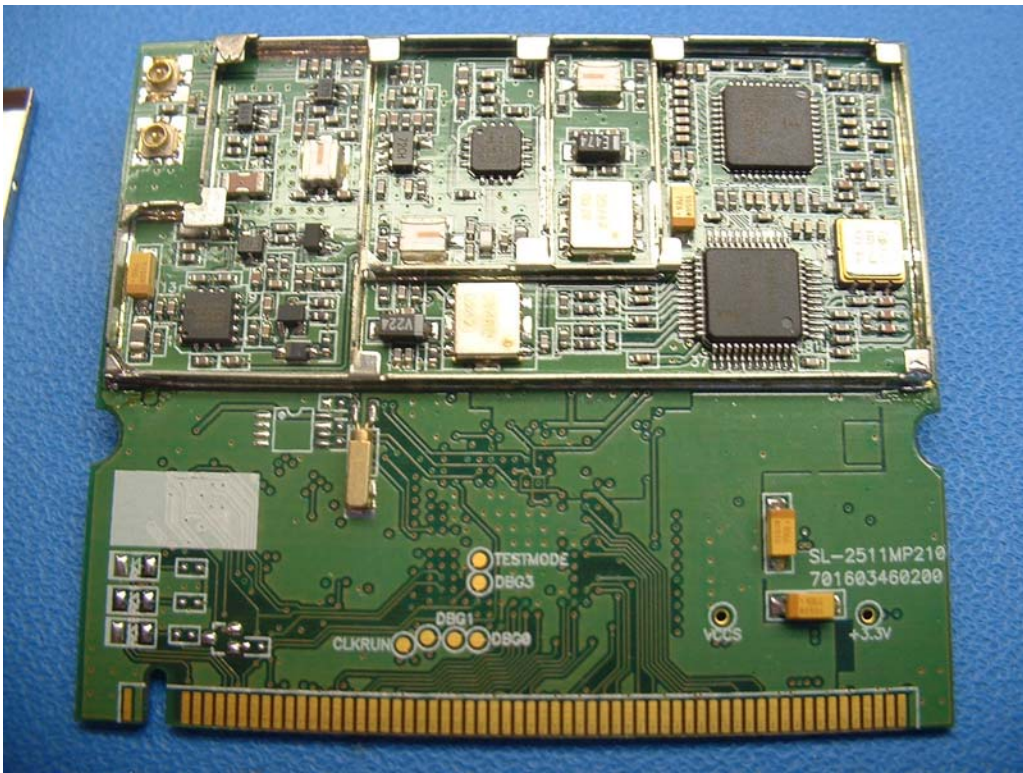


Figure 14 - Radio card top without shield



Figure 15 - Top of radio card - no shield