

PCS, Public Safety Band, 2.4 GHz, 5 GHz 802.11a/b/g Directional Panel Antenna Series

The XtremeWave™ directional panel antennas are designed to cover PCS, 4.9 GHz Public Safety band, 2.4 GHz and 5.8 GHz ISM frequencies, obtaining maximum gain in an attractive, low-profile package. All models provide efficient and stable performance across their specified bands and can be mounted indoors or outdoors. **Multi-band models covering public safety and 802.11a/b/g standards are available.**

General Specifications:
Directional panel antennas

Radome Material:
UL 94-V0 plastic

Polarization:
Linear, vertical/horizontal. Left hand circular (MP24012CPLXF only)

Nominal Impedance:
50 Ohms

Mounting Method:

Model/Mount	MPAB7	MPAB8	MPAB10	MPAB11	MPAB12
MP19008XFPT	N/A	N/A	N/A	included	optional
MP19013XFPT	optional	optional	N/A	optional	optional
MP24008XFPT	N/A	N/A	N/A	included	optional
MP24012CPLXFPT	optional	optional	N/A	optional	optional
MP24013XFPT	optional	optional	N/A	optional	optional
MP24018XFPT	optional	optional	optional	N/A	N/A
MP58013XFPT	N/A	N/A	N/A	included	optional
MP24580809PT	N/A	N/A	N/A	included	optional
MP24581820PT	optional	optional	optional	N/A	N/A
Mount Description	Heavy duty outdoor adjustable mount with +/-35° uptilt/downtilt. If used with MP24018XFPT the mount provides +/-18° uptilt/downtilt. Same as MPAB8 but bracket is longer.	Heavy duty outdoor adjustable mount with 17° uptilt/downtilt. If used with MP24018XFPT the mount provides +/-9° uptilt/downtilt.	Heavy duty outdoor adjustable mount +/-20° uptilt/downtilt and +/-90° polarity. Includes DSS satellite style house bracket.	Short adjustable indoor mount. It may be used outdoors with small housing panels only.	Long adjustable indoor corner mount.

Features and Benefits:

- Printed circuit board design provides the best performance-to-price ratio.
- UL94-V0 plastic and PC board. Provides UL's high flame retardant rating allowing maximum placement flexibility and meeting stringent building fire rating codes.
- Attractive, low profile housing. Blends well with indoor and outdoor environments where aesthetic considerations are important.
- Corner exit RG-58/U pigtail design (PCS and 2.4 GHz models), .141 semi-rigid (5.1 and 5.8 GHz models), and high performance Plenum Rated ML195 (dual band models). Permits the linear polarized panel to be mounted in vertical or horizontal polarity with a wide variety of connectors.
- Optional UL 910 rated Plenum cable. Allows the cable to be installed in any indoor mounting location, including air ducts.
- Adjustable mounting brackets for indoor and outdoor mounting. Provide maximum flexibility for indoor or outdoor installations.



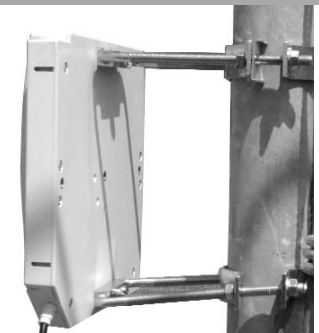
Small housing panels are 5/1" H x 4.7" W x 1.5" D



13 dBi panel on MPAB12 corner wall mount



Small housing panel on MPAB11 wall mount



MP24013XFPT on MPAB8 outdoor mount

MP24018XFPT



Specifications and Patterns

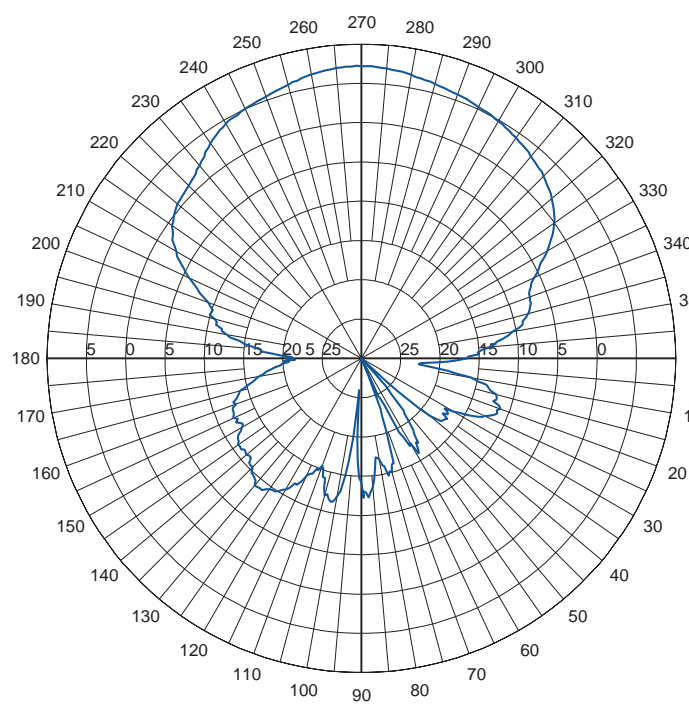
Electrical Specifications

Model #	Frequency Range	Gain	Front-to-Back Ratio	3 dB Horizontal Beamwidth	3 dB Vertical Beamwidth	VSWR	Max. Power Input	Connector Options
MP19008XFPT	1.85-1.99 GHz	8.0 dBi	> 15 dB	90°	60°	< 1.5:1	20 Watts	
MP19013XFPT	1.85-1.99 GHz	12.5 dBi	> 18 dB	40°	35°	< 1.5:1	20 Watts	N female
MP24008XFPT	2.30-2.50 GHz	8.5 dBi	> 15 dB	60°	60°	< 1.5:1	20 Watts	(part #NF)
MP24012CPLXFPT	2.30-2.50 GHz	12.0 dBic	> 20 dB	35°	35°	< 1.5:1	20 Watts	standard.
MP24013XFPT	2.30-2.50 GHz	13.0 dBi	> 18 dB	35°	35°	< 1.5:1	20 Watts	Other
MP24018XFPT	2.30-2.50 GHz	18.0 dBi	> 25 dB	18°	19°	< 1.5:1	20 Watts	connector
MP51513XFPT	5.15-5.35 GHz	13.0 dBi	> 23 dB	42°	27°	< 1.5:1	20 Watts	options
MP58013XFPT	5.72-5.87 GHz	12.5 dBi	> 23 dB	42°	28°	< 1.5:1	20 Watts	are
MP24580809PT	2.40-2.48/4.94-5.85 GHz	8 dBi/9 dBi	> 22 dB/> 15 dB	60°/50°	60°/40°	< 2.0:1/< 2.0:1	25 Watts	available.
MP24581820PT	2.40-2.48/4.94-5.85 GHz	18 dBi/20 dBi	> 30 dB/> 25 dB	21°/9°	21°/9°	< 2.0:1/< 2.0:1	25 Watts	Consult factory.

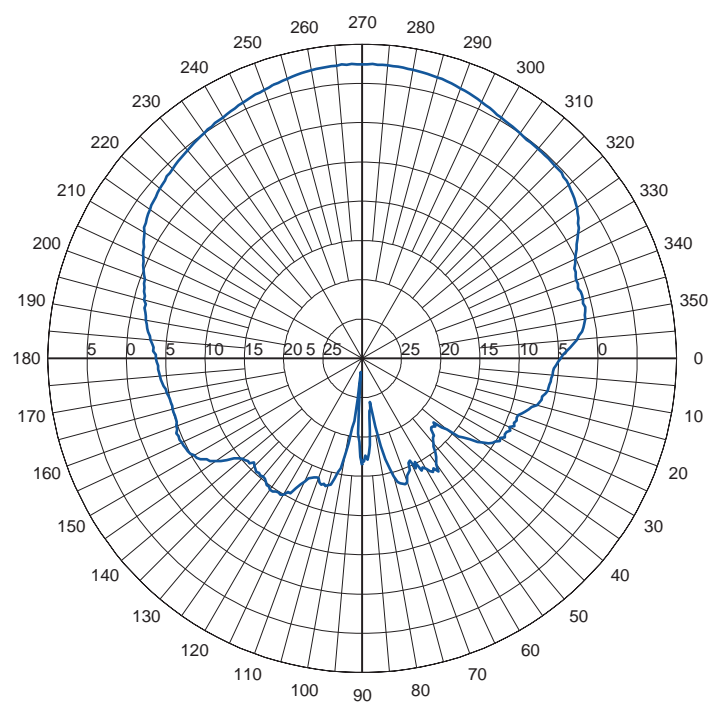
Mechanical Specifications

Model #	Wind Loading (Frontal)		Temperature Range	Dimensions	Weight	Cable
	@100 mph Wind					
MP19008XFPT	9.3 lbs.		-40°C to +70°C	5.1" x 4.7" x 1.5" (12.9 x 11.9 x 3.8 cm)	0.5 lbs (0.23 kg)	12" (30.5 cm) RG58/U**
MP19013XFPT	27.9 lbs.		-40°C to +70°C	8.8" x 8.1" x 1.6" (22.4 x 20.6 x 4.06 cm)	1.2 lbs (0.54 kg)	12" (30.5 cm) RG58/U**
MP24008XFPT	9.3 lbs.		-40°C to +70°C	5.1" x 4.7" x 1.5" (12.9 x 11.9 x 3.8 cm)	0.5 lbs (0.23 kg)	12" (30.5 cm) RG58/U**
MP24012CPLXFPT	27.9 lbs.		-40°C to +70°C	8.8" x 8.1" x 1.6" (22.4 x 20.6 x 4.06 cm)	1.2 lbs (0.54 kg)	12" (30.5 cm) RG58/U**
MP24013XFPT	27.9 lbs.		-40°C to +70°C	8.8" x 8.1" x 1.6" (22.4 x 20.6 x 4.06 cm)	1.2 lbs (0.54 kg)	12" (30.5 cm) RG58/U**
MP24018XFPT	85 lbs.		-40°C to +70°C	15.1" x 13.9" x 1.9" (38.4 x 35.3 x 4.8 cm)	3.9 lbs (1.8 kg)	12" (30.5 cm) RG58/U**
MP51513XFPT	9.3 lbs.		-40°C to +70°C	5.1" x 4.7" x 1.5" (12.9 x 11.9 x 3.8 cm)	0.5 lbs (0.23 kg)	6" (15.25 cm) .141 semi-rigid*
MP58013XFPT	9.3 lbs.		-40°C to +70°C	5.1" x 4.7" x 1.5" (12.9 x 11.9 x 3.8 cm)	0.5 lbs (0.23 kg)	6" (15.25 cm) .141 semi-rigid*
MP24580809PT	9.3 lbs.		-40°C to +70°C	5.1" x 4.7" x 1.5" (12.9 x 11.9 x 3.8 cm)	0.5 lbs (0.23 kg)	12" (30.5 cm) ML195*
MP24581820PT	85 lbs.		-40°C to +70°C	15.1" x 13.9" x 1.9" (38.4 x 35.3 x 4.8 cm)	3.9 lbs (1.8 kg)	12" (30.5 cm) .141 semi-rigid*

* Plenum Rated cable ** UL910 Plenum Rated cable optional for these models



MP19008XFPT Elevation Cut



MP19008XFPT Azimuth Cut