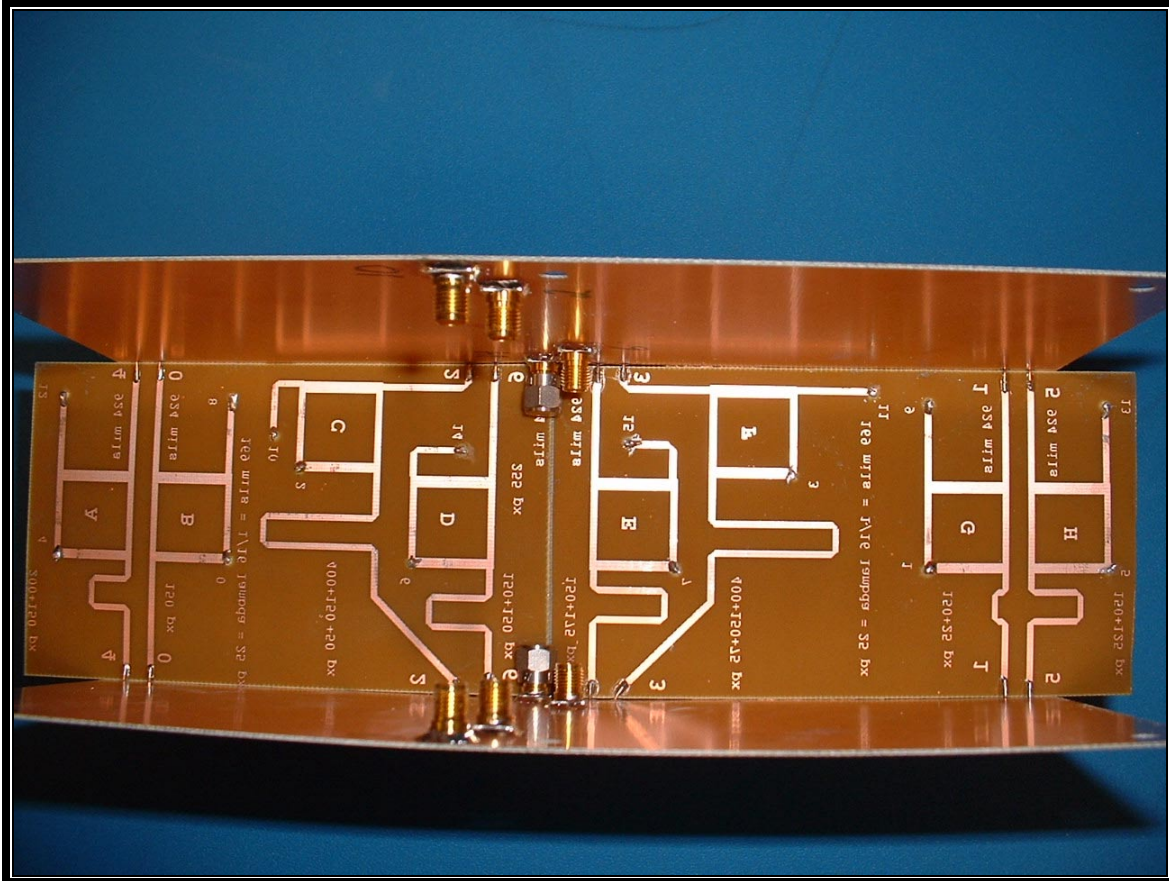
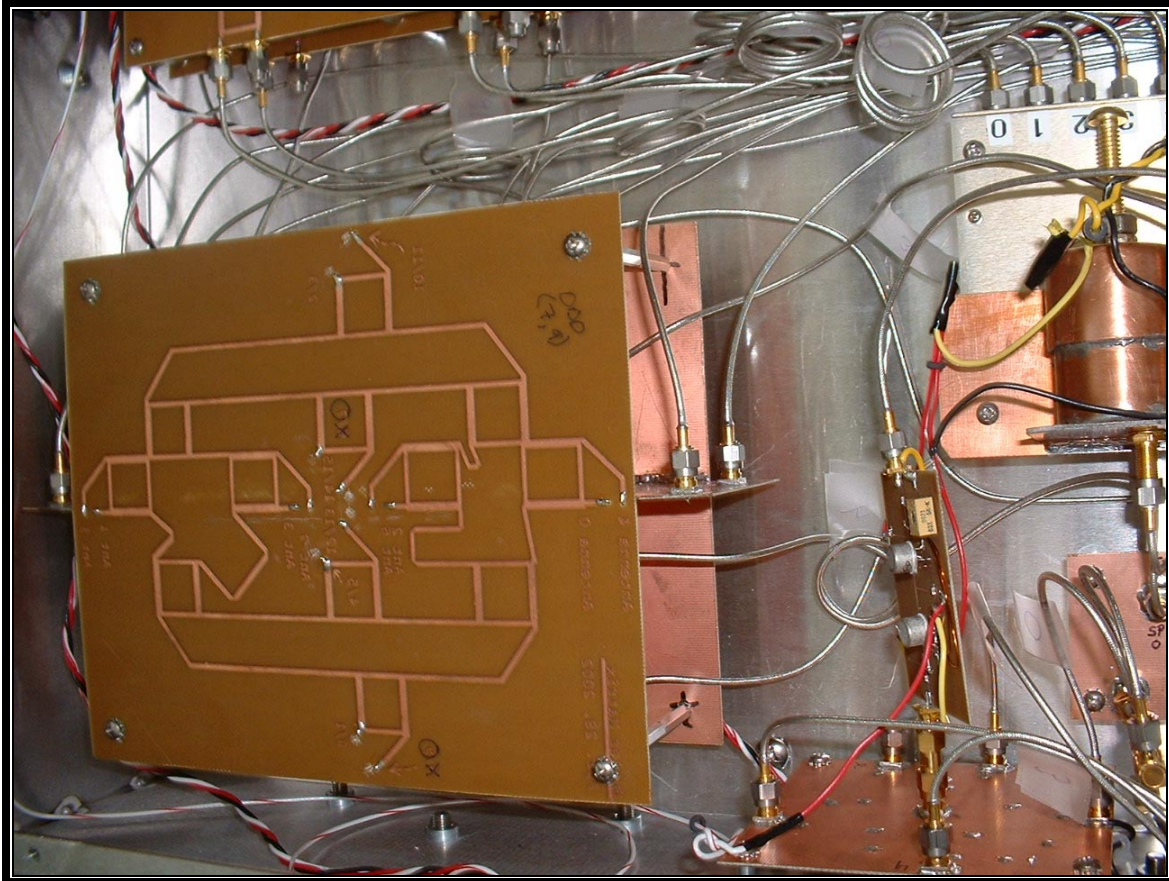


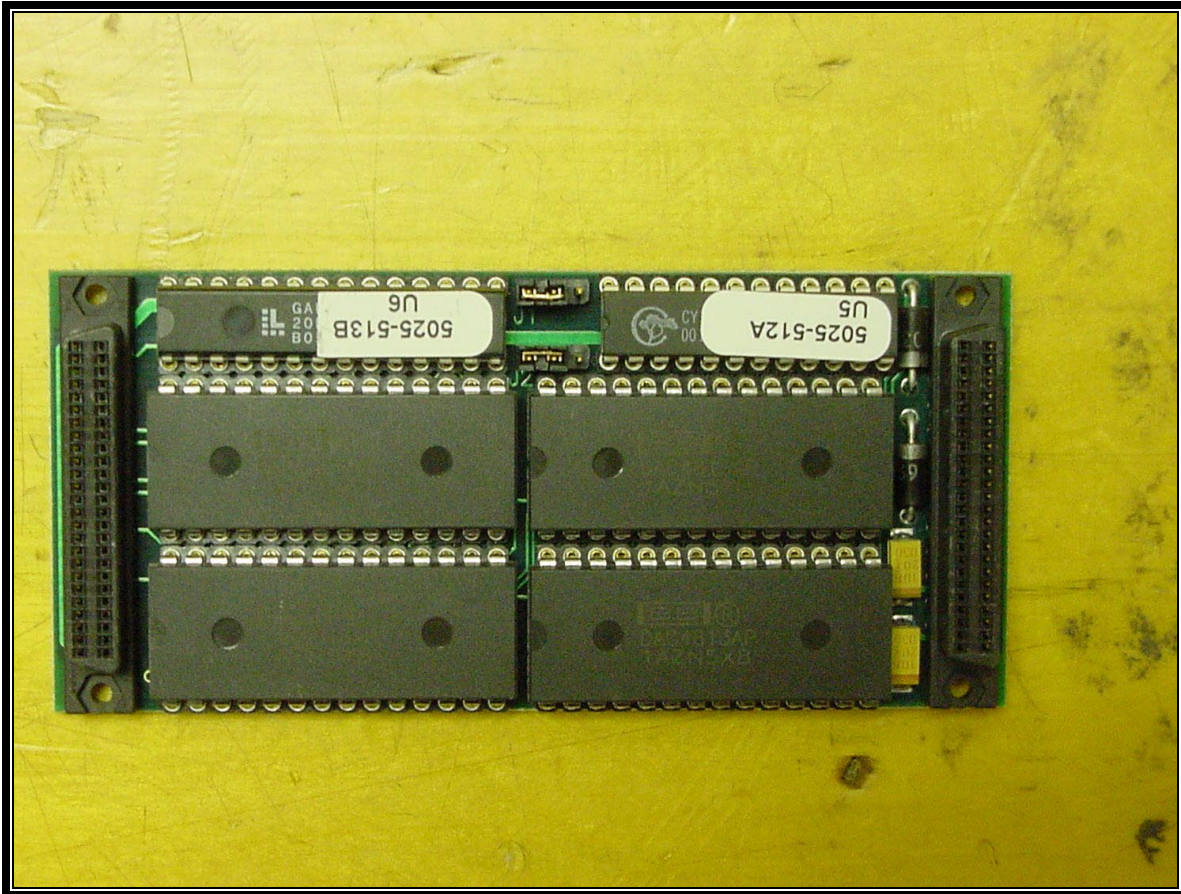
PHOTOGRAPH 28: BUTLER MATRIX ASSEMBLED #2



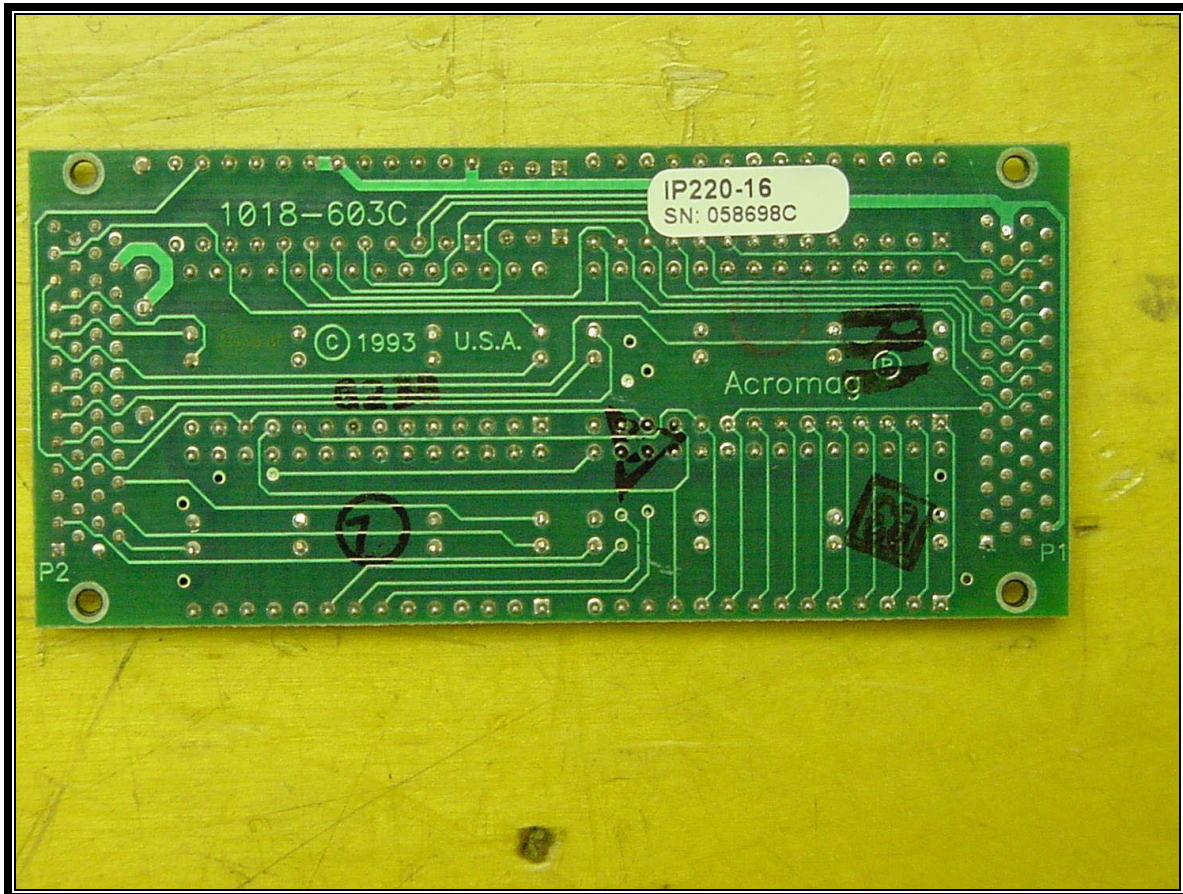
PHOTOGRAPH 29: BUTLER MATRIX ASSEMBLED #3



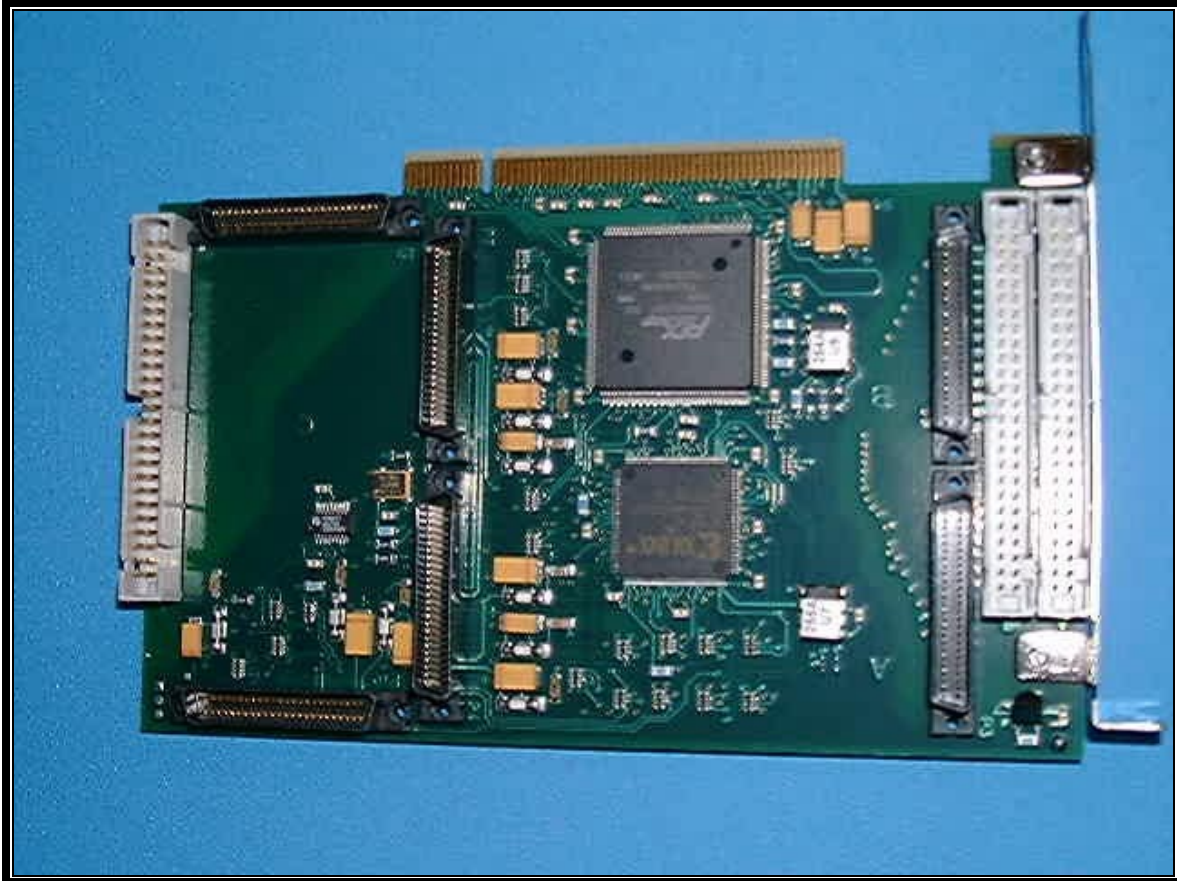
PHOTOGRAPH 30: BUTLER MATRIX INSTALLED



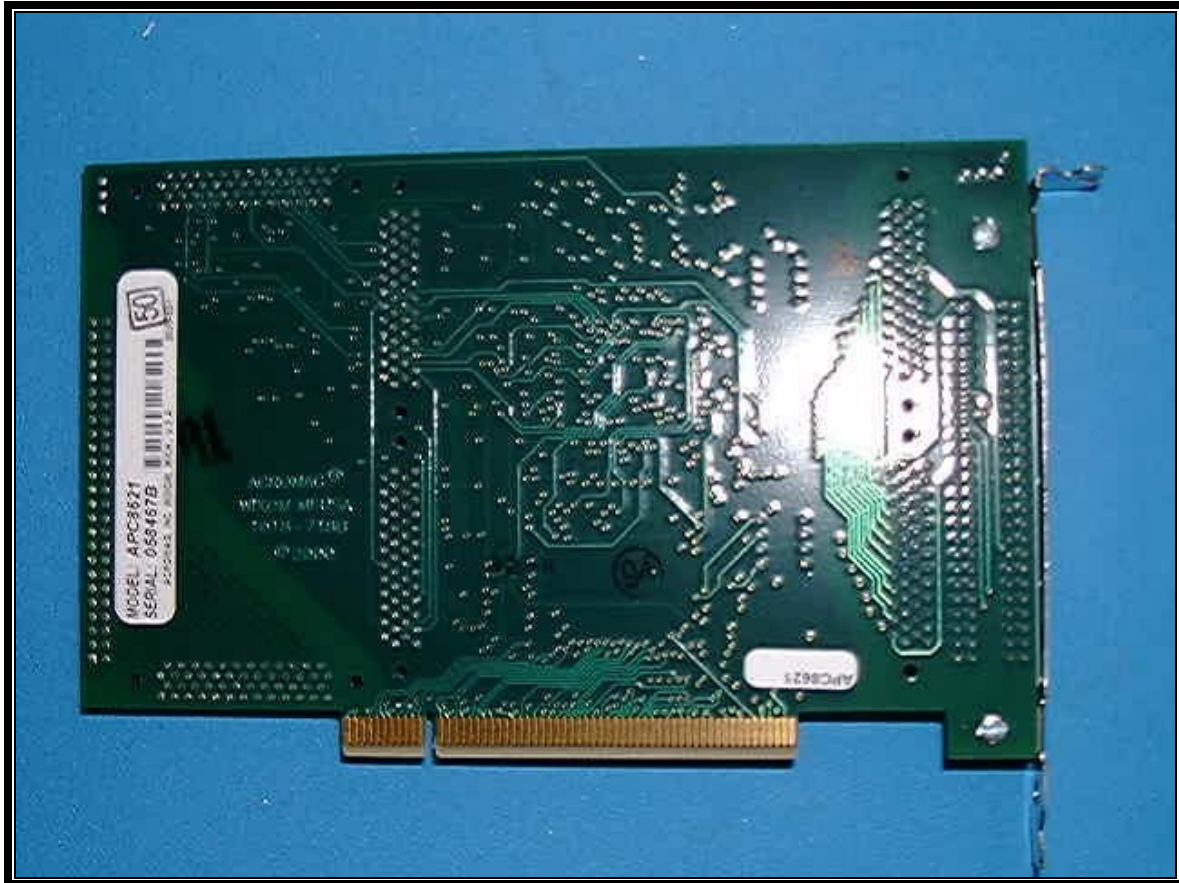
PHOTOGRAPH 31: DAC MODULE TOP



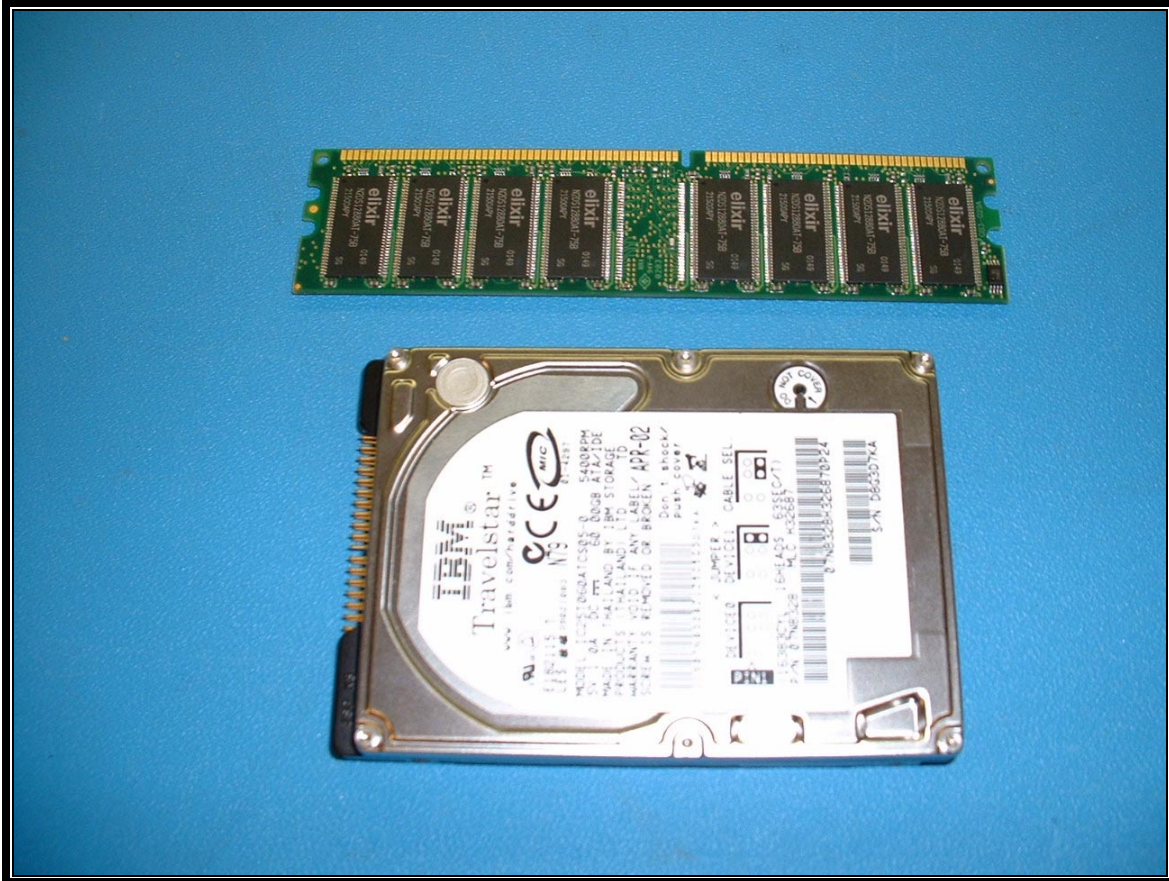
PHOTOGRAPH 32: DAC MODULE BOTTOM



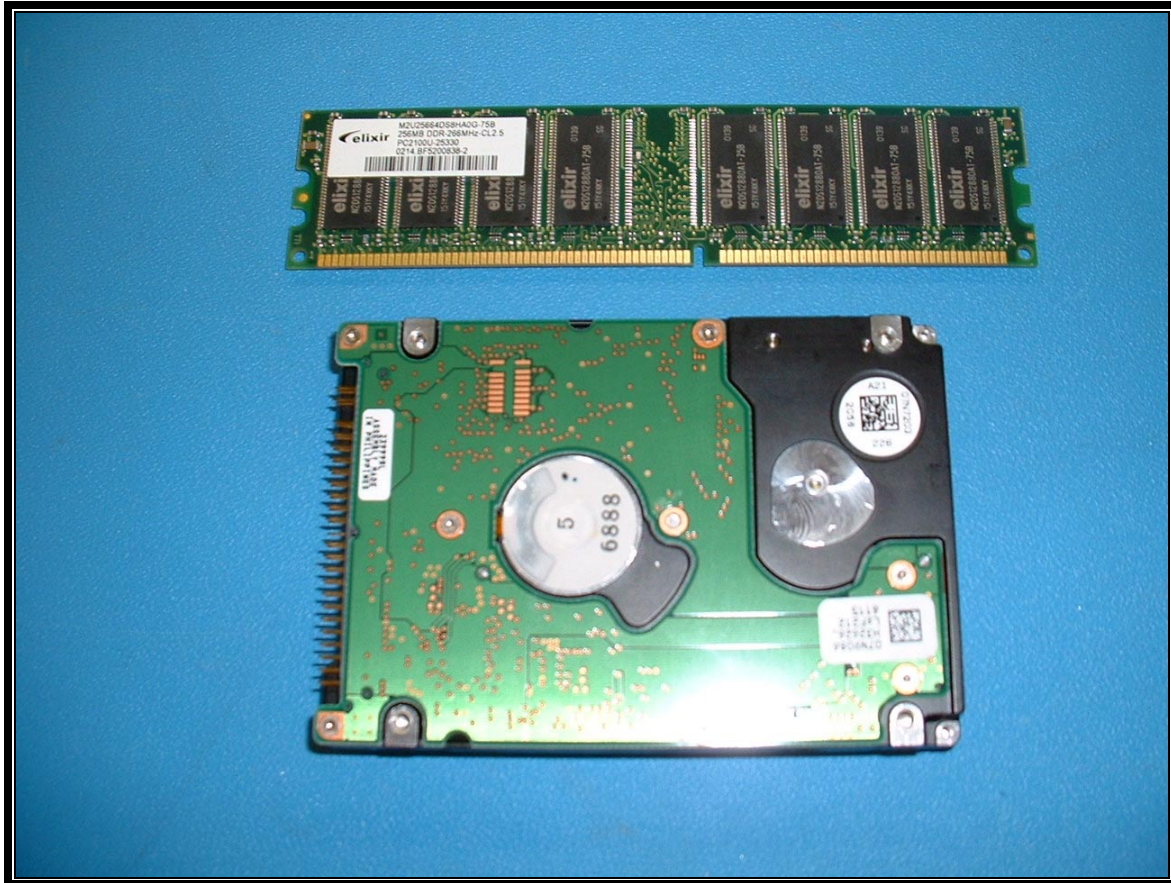
PHOTOGRAPH 33: DAC PCI CARRIER BOARD TOP



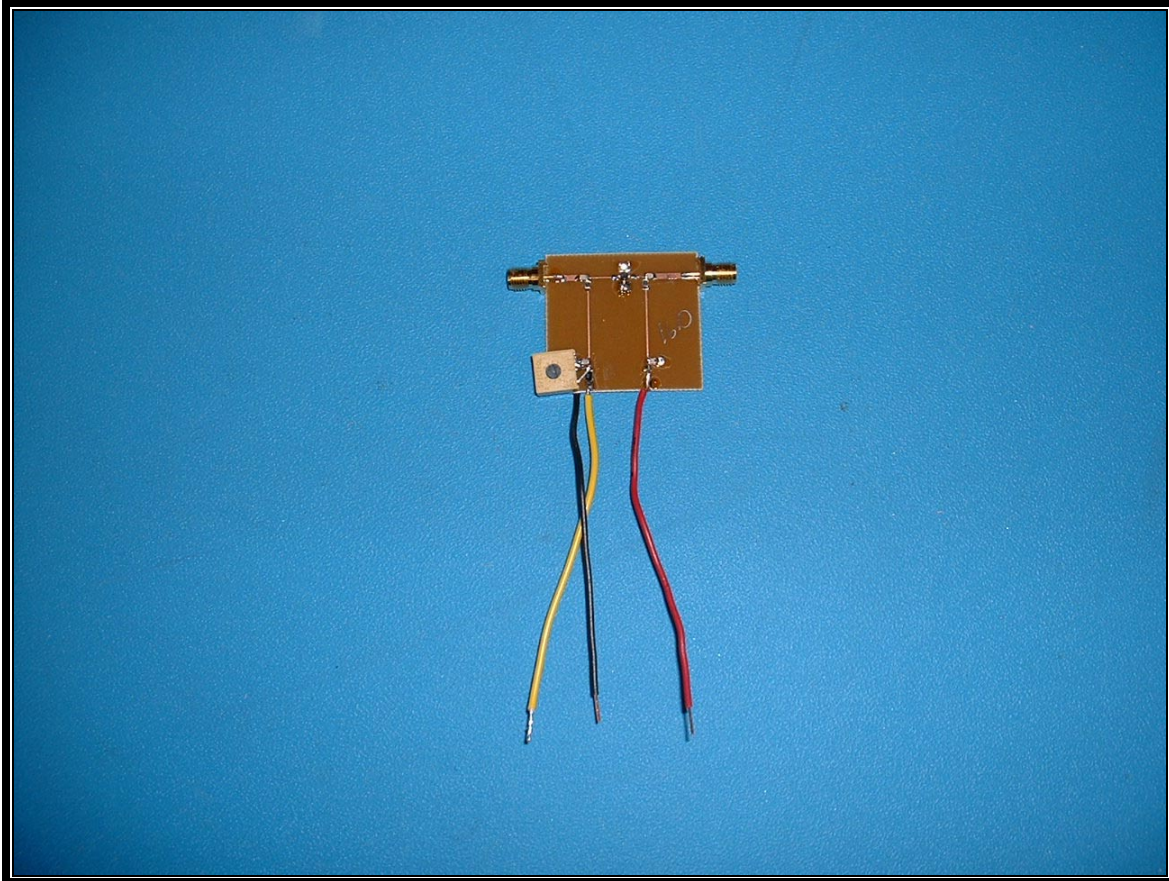
PHOTOGRAPH 34: DAC PCI CARRIER BOARD BOTTOM



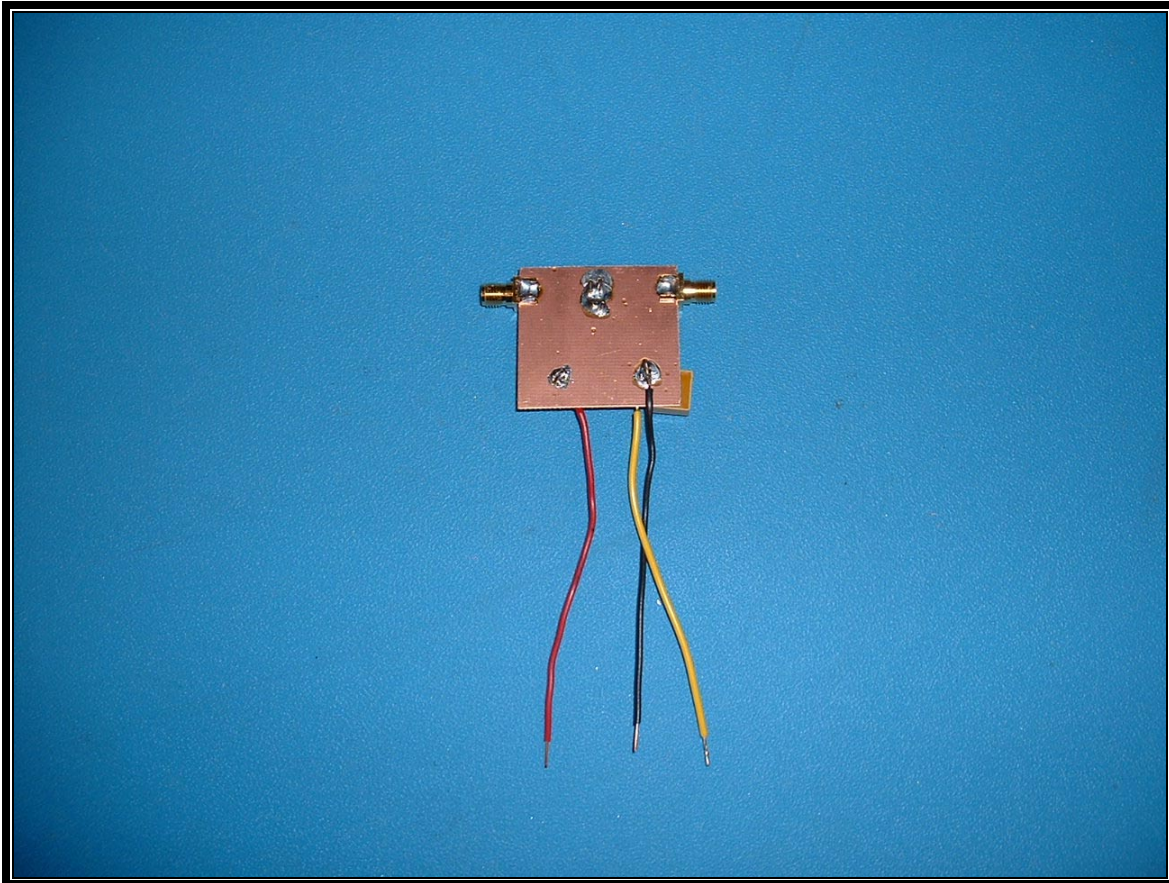
PHOTOGRAPH 35: HARD DISK AND MEMORY TOP



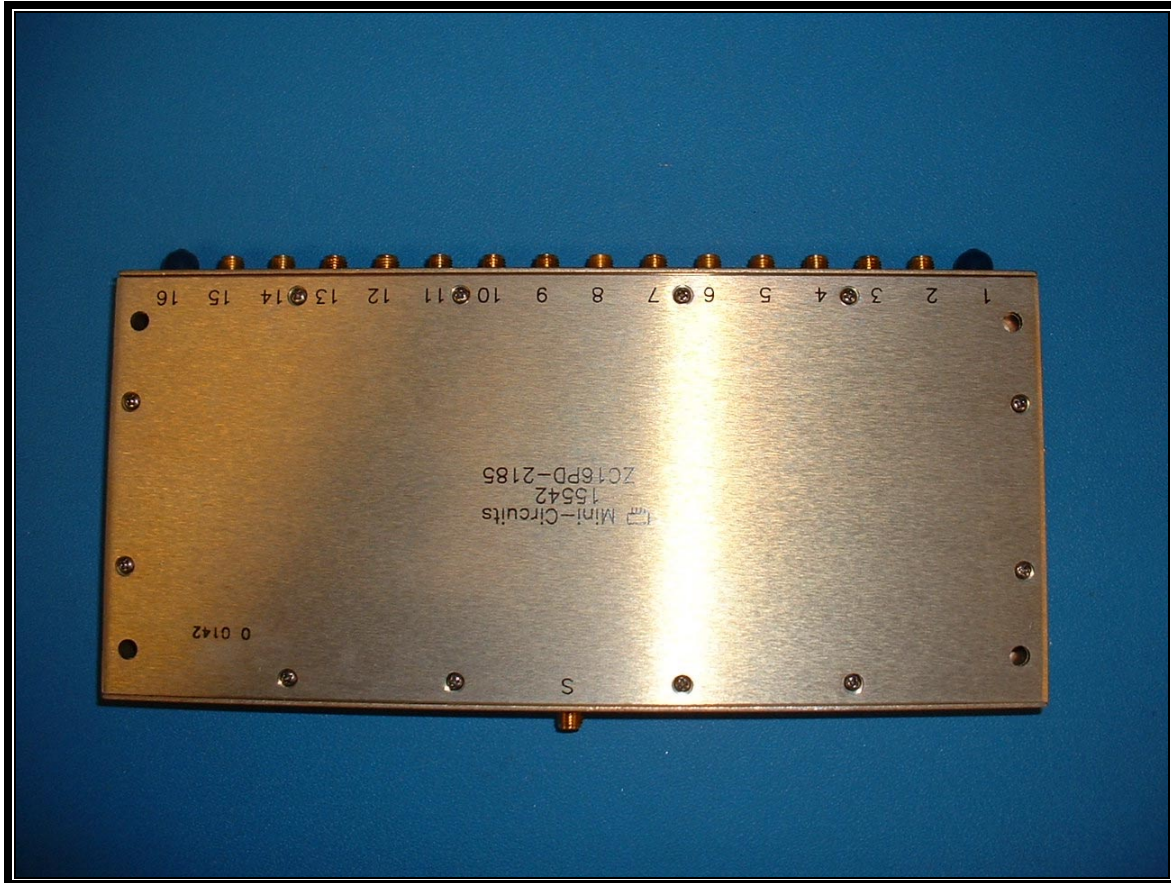
PHOTOGRAPH 36: HARD DISK AND MEMORY BOTTOM



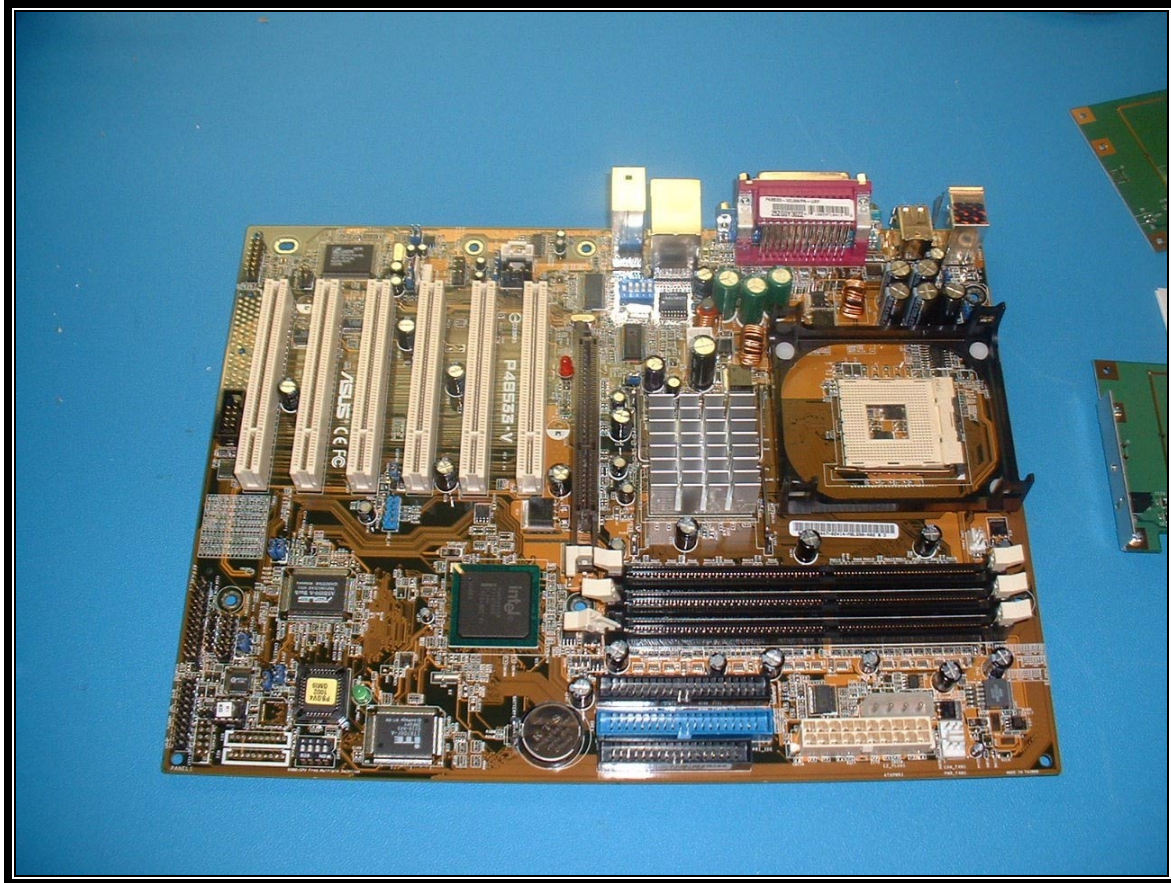
PHOTOGRAPH 37: LNA TOP



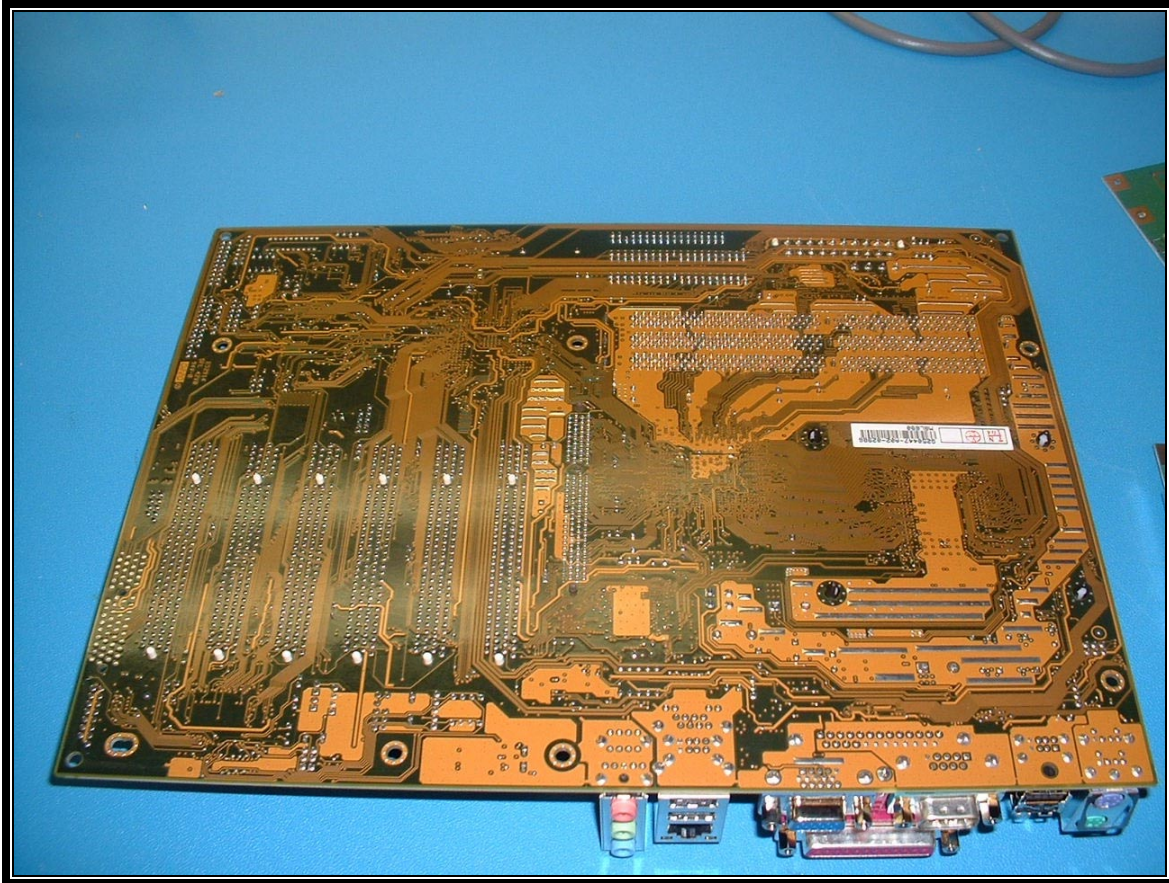
PHOTOGRAPH 38: LNA BOTTOM



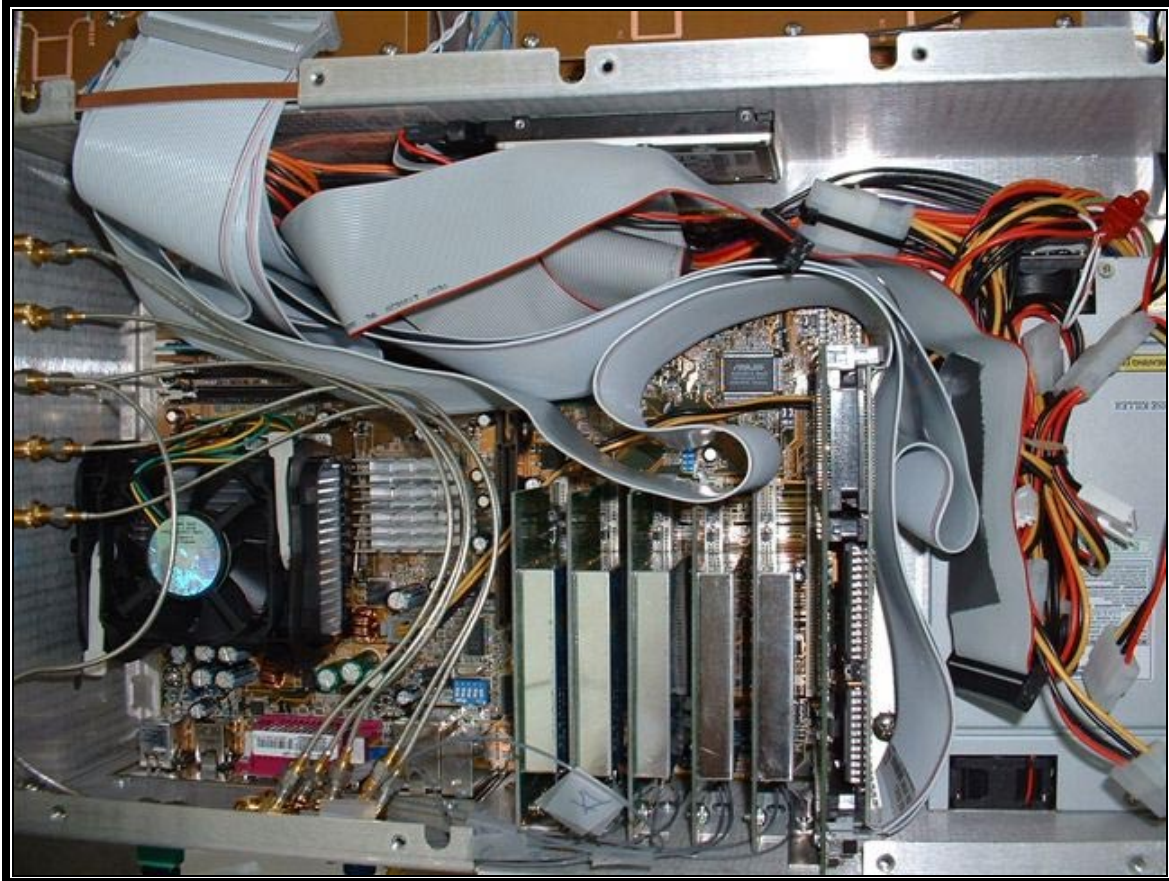
PHOTOGRAPH 39: MINI-CIRCUITS 16-WAY SPLITTER



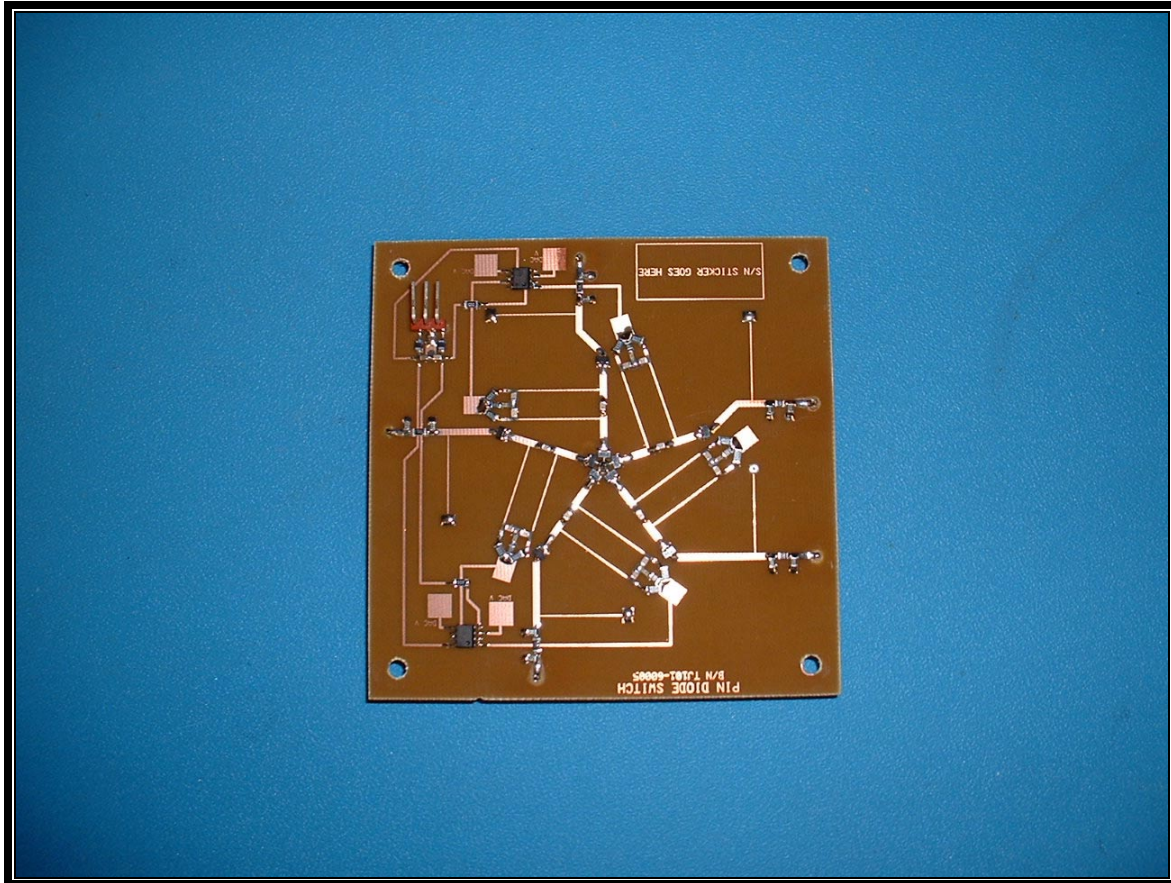
PHOTOGRAPH 40: MOTHER BOARD TOP



PHOTOGRAPH 41: MOTHER BOARD BOTTOM



PHOTOGRAPH 42: MOTHER BOARD LOADED



PHOTOGRAPH 43: PIN DIODE SWITCH TOP