



Bluetooth™

EPoX USB Dongle

~ Quick Guide ~

DISCLAIMER OF WARRANTIES

There are no warranties which extend beyond the description on the face of the EPoX limited warranty. EPoX expressly excludes all other warranties, express or implied, regarding its products; including any implied warranties of merchantability, fitness for a particular purpose or noninfringement. This disclaimer of warranties shall apply to the extent allowed by state laws in the states of United States in which state laws do not allow or limit the exclusion of the implied warranties.

DO NOT PLUG THE USB DONGLE IN YOUR COMPUTER BEFORE YOU
COMPLETE THE BLUETOOTH SOFTWARE INSTALLATION!

QUICK REFERENCE GUIDE

Thank you for purchasing an EPoX Bluetooth Dongle! Your computer will now be able to connect to any Bluetooth enabled device in a matter of seconds. Bluetooth technology has revolutionized the way computers exchange information; and now your computer will be able to take advantage of the various services used within the Bluetooth network.

The EPoX Bluetooth Dongle will connect your computer to a variety of Bluetooth enabled devices, such as: Printers, phones, PDA's, etc. The possibilities are endless.

For updated information on issues or compatibility on your EPoX Bluetooth dongle, please reference User Guide in the given CD or visit our website at <http://www.epox.com.tw>

A. ITEMS INCLUDED IN THIS PACKAGE

- 1 EPoX USB Bluetooth Dongle
- 1 Driver CD
- 1 Quick Reference Guide
- 1 Extension USB cable

B. MINIMUM SYSTEM REQUIREMENTS

A system equipped with at least a Pentium III or its equivalent or better.

Microsoft™ Windows 98SE, ME, 2000 or XP

Minimum of 128MB memory

1 CD Drive

1 USB Port

Check with your place of purchase if you are unsure about the above requirements.

C. BLUETOOTH DONGLE INSTALLATION

DO NOT PLUG THE USB DONGLE IN YOUR COMPUTER BEFORE YOU COMPLETE THE BLUETOOTH SOFTWARE INSTALLATION!



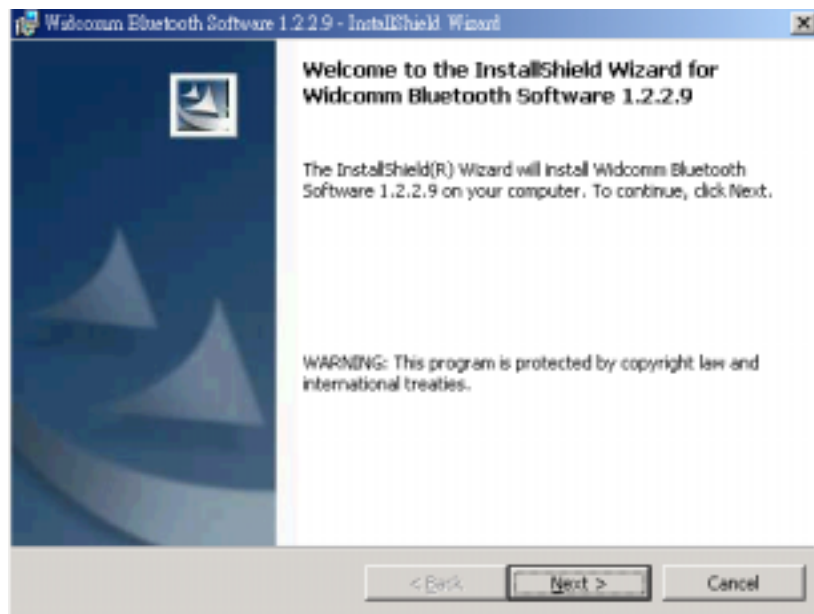
If you plugged in the dongle before the software installation, and your system started to detect the USB Bluetooth dongle, please press **Cancel button to stop the installation, then remove the dongle.**

Installing the EPoX Bluetooth dongle in your computer:

1. If your computer is not turned on, please turn it on.
2. Insert the EPoX Bluetooth Software CD into your CD-ROM drive. If the Auto-Run function of your CD-ROM drive is enabled (in Windows, the default setting of this function is usually enabled), then the installation program will start automatically.

If this is not the case, you can utilize the Windows Explorer to browse the CD contents and run **Setup.exe** manually.

3. After the *Installation Wizard* window finishes loading, a welcoming screen will appear. Please click **Next** button to continue the software installation.



4. After reading through the License agreement, click the button I accept the terms in the license agreement and click the **Next** button to continue.

5. Under **Device Name** type in a unique name to identify your computer within the Bluetooth network. For Example: TONY-LIN.

Under the **Device Type** menu chose the appropriate option, either Desktop or Laptop. After you are finished go ahead and click **Next**.

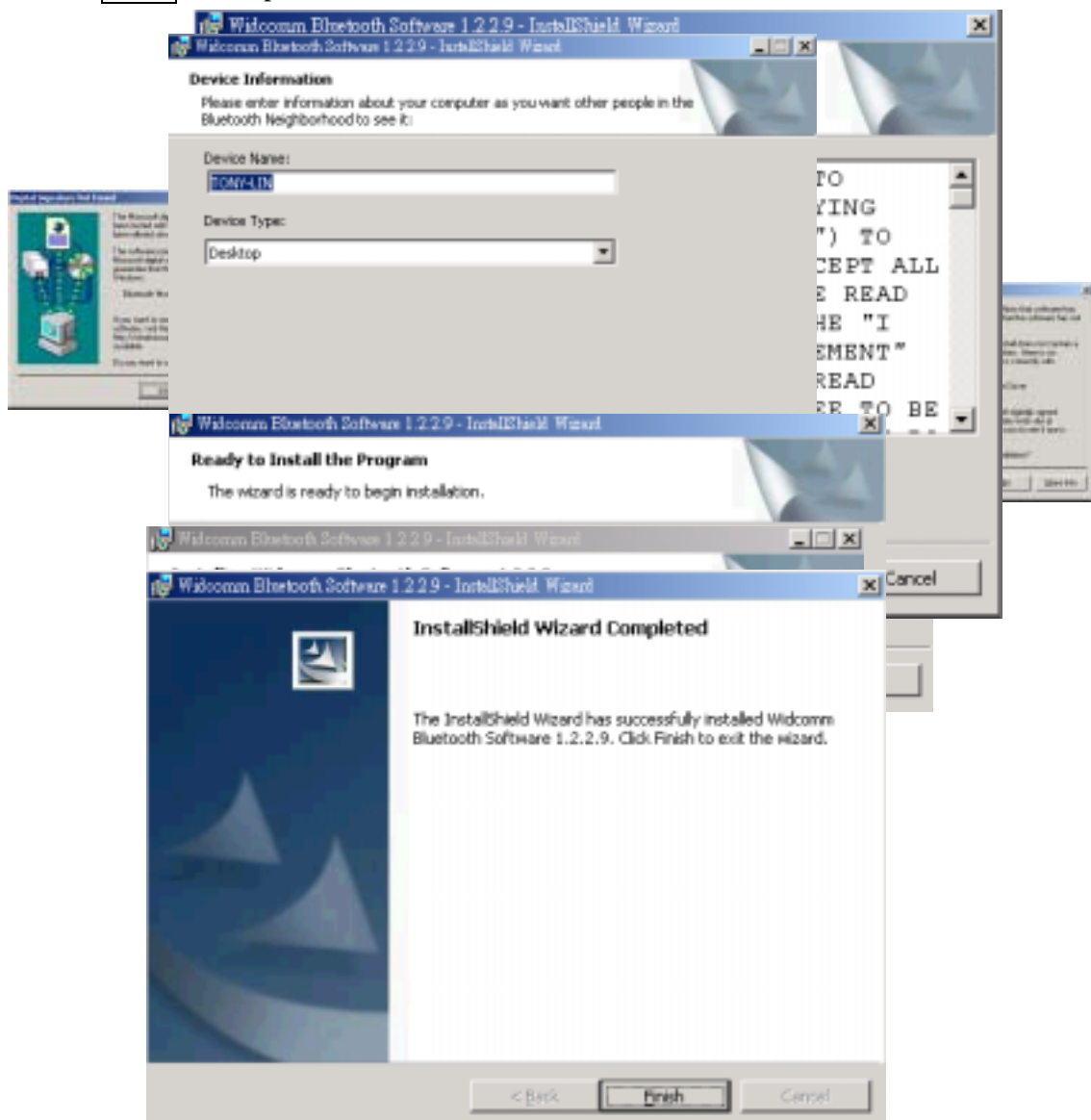
🔑 **Note:** If your computer is running Windows 98SE, ME, 2000 or XP. It is possible to come across several **Microsoft Digital Signature** windows prompting if you would like to continue with the installation. Please confirm by pressing **Yes** on each in order to complete the installation.

6. You will see a **Destination Folder** Dialog on the screen. It is suggested to remain the same directory that the Installation program uses. Click **Next** to move on or you can enter the directory name you wish to use then click the **Next** button.

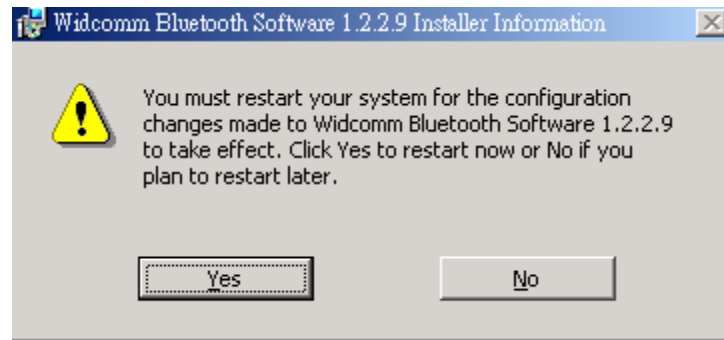
7. Click **Install** in the “Ready to Install Program” Dialog.


8. Click **OK** in Driver Signature Notice dialog.

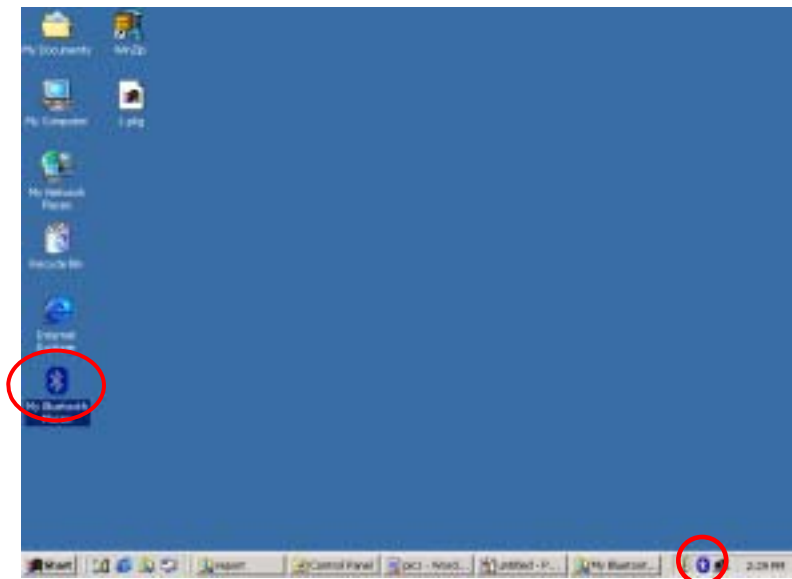
9. Click **Finish** to complete software installation.



10. Click **Yes** to restart computer.



11. After restart system, there will be two Bluetooth icons  on your computers' desktop. One will be located on the toolbar and the other on the desktop area.

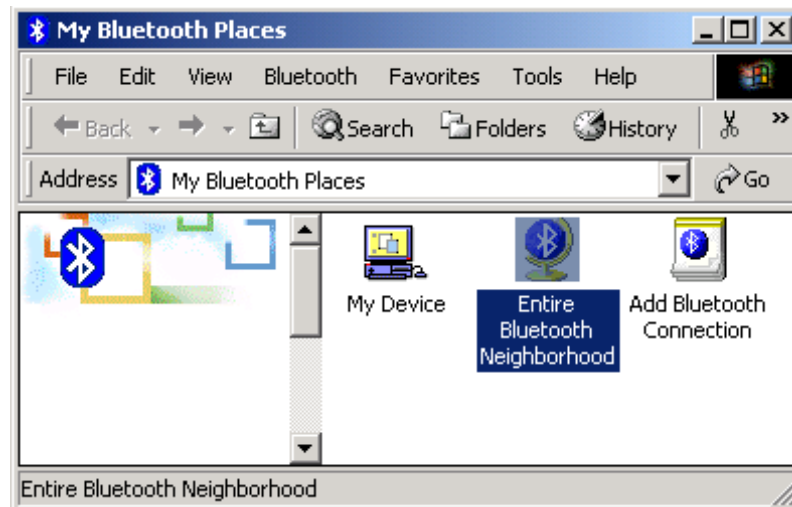


12. While your computer is on, go ahead and plug in the Bluetooth dongle on an available USB port.

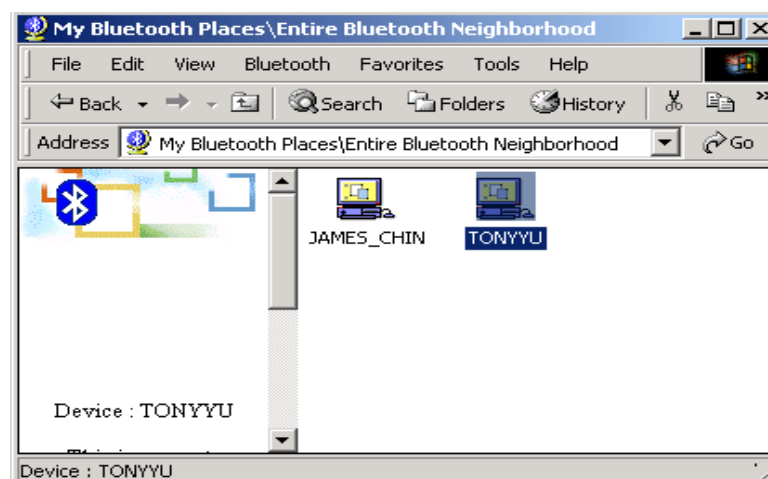
Congratulations! Your computer is now Bluetooth enabled.

D. BLUETOOTH DONGLE SERVICES

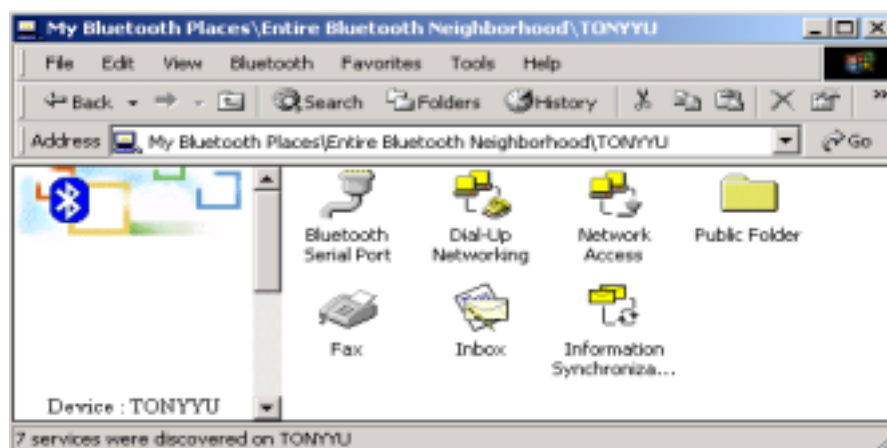
You can utilize these services by clicking twice on the Bluetooth icon  located on the bottom right corner of the screen to enter “My Bluetooth” functional table.



By double clicking under the **ENTIRE BLUETOOTH NEIGHBORHOOD** icon, you will find all the local Bluetooth enabled devices discovered by your computer. The Dongle will automatically scan all possible Bluetooth devices located within the distance of 10 meters .



By double-clicking in the **MY DEVICE** icon, a new window will appear, you will find all the available services offered by your Bluetooth Dongle.



Natively, the Bluetooth software will offer the following services:



File Transfer : This service will enable you to transfer files back and forth with your Bluetooth dongle.



Dial-Up Networking : This service will enable you to dial-up to the internet without a modem connected directly to your computer using a Bluetooth Dial-Up Networking host. Possible Dial-Up Networking host devices include:

- Bluetooth-enabled computers with a physical modem connected.
- Stand-alone Bluetooth enabled modems.
- Bluetooth-enabled mobile phones (only if supported by the phone).



Network Access : This service will allow sharing an Ethernet LAN connection Ex. Broadband Internet Connection. The client connecting to the Bluetooth host offering the Network Access service will be able to access the LAN. Possible Network Access hosts include:

- Bluetooth enabled computers that are physically connected to a LAN.
- Stand-Alone Bluetooth Network Access Points.



FAX Service : This service will allow you to fax a document through a host computer that has fax/modem software installed. The client computer will also be required to have Fax/ Modem software installed before you use this service.



Information Exchange : This service will allow you to send, receive, and exchange Microsoft Outlook items with other Bluetooth enabled devices such as: PDA' s, Mobile Phones, laptops, etc.



Information Synchronization: This service will allow you to synchronize a Personal Information Manager database between two Bluetooth enabled computers. Only Microsoft Outlook PIM synchronization is supported between a Bluetooth client and a Bluetooth host.



Bluetooth Serial Port: This service will allow two Bluetooth devices to establish a wireless connection through virtual communications ports. This connection simulates a serial null cable.

For more information about this device, please refer to the User' s Manual. There will be more services to be released from time to time. Please check with our Website at <http://www.epox.com.tw> or your local distributor for more details.

FEDERAL COMMUNICATIONS COMMISSION

This device complies with Part 15 of the FCC Rules. Operation is subject to the following two conditions: (1) this device may not cause harmful interference, and (2) this device must accept any interference received, including interference that may cause undesired operation.

NOTE

This equipment has been tested and found to comply with the limits for a Class B digital device, pursuant to Part 15 of the FCC Rules. These limits are designed to provide reasonable protection against harmful interference in a residential installation. This equipment generates, uses and can radiate radio frequency energy and, if not installed and used in accordance with the instructions, may cause harmful interference to radio communications. However, there is no guarantee that interference will not occur in a particular installation. If this equipment does cause harmful interference to radio or television reception, which can be determined by turning the equipment off and on, the user is encouraged to try to correct the interference by one or more of the following measures:

- Reorient or relocate the receiving antenna.
- Increase the separation between the equipment and receiver.
- Connect the equipment into an outlet on a circuit different from that to which the receiver is connected.
- Consult the dealer or an experienced radio/TV technician for help.

Changes or modifications not expressly approved by the party responsible for compliance could void the user's authority to operate the equipment.

This device and its antenna(s) must not be co-located or operating in conjunction with any other antenna or transmitter.

Branch offices

EPoX Headquarter

EPoX Computer Co., LTD.

10F, 346, Chung San Rd. Sec 2, Chung Ho City Taipei Hsien, Taiwan

TEL: 886-2-2247-9888 FAX: 886-2-2247-7888

<http://www.epox.com.tw> E-mail: sales@epox.com.tw

EPoX-USA

EPoX International Inc.

531 East Jamie Ave La Habra, CA 90631 U.S.A.

TEL: 714-680-0898 FAX: 714-680-0858

E-Mail: sales@epox.com <http://www.epox.com/html/default.asp?lang=1>

EPoX-Europe

EPoX Europe Computer B.V.

Noordkade 64, 2741 EZ Waddinxveen, Netherlands

TEL: 31-0182-633355 FAX: 31-0182-632744

E-mail: sales@epox.nl <http://www.epox.nl/>

EPoX-Germany

Elito-EPoX Computer GmbH..

41, Nuernberger Strasse, D-91257, Pegnitz, Germany

TEL: +49-9241-9917-15 FAX: +49-9241-9917-71

E-mail: info@elito-epox.com <http://www.elito-epox.com/>

EPoX-Korea

EPoX Korea Computer.

RM601, Princetel Building 13-20, Youido--Dong, Youngdungpo-Gu., Seoul, Korea

TEL: + 882-66729788-9 FAX: + 882-66729787

E-mail: epoxkorea@goldnet.ne.kr