

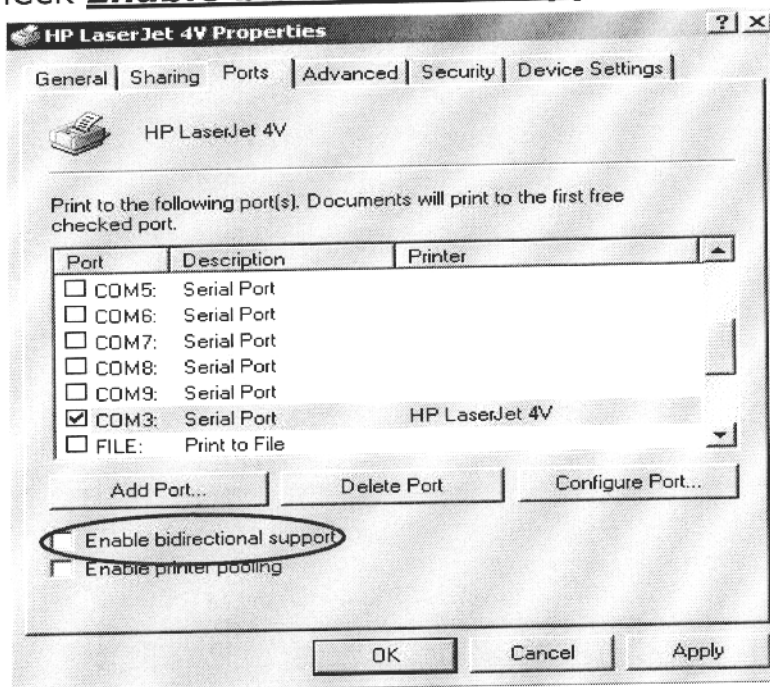
### D.3: Important items to check

Whether your printer drivers are installed or not, check the printer's **Properties** (Please reference above).

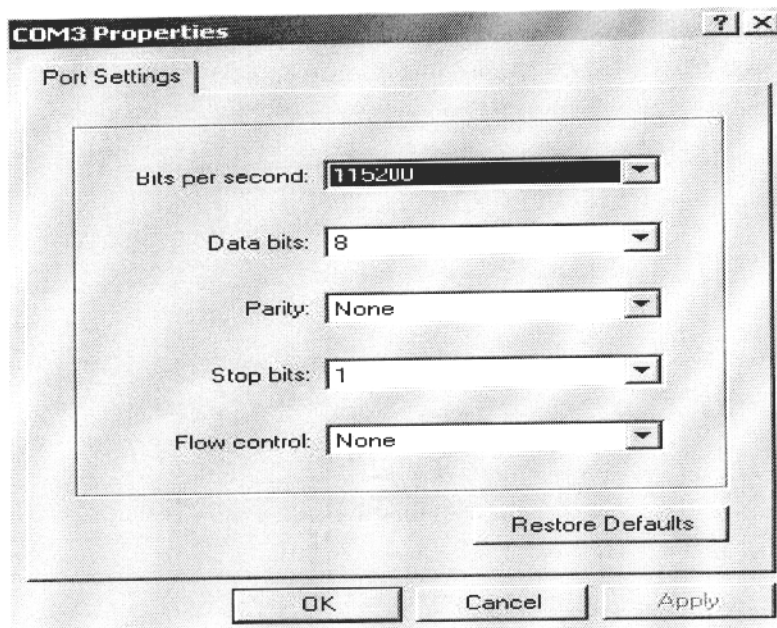
✂✂ If your system is running Window 2000/XP, and click on the

**Ports** tab and check the following two items:

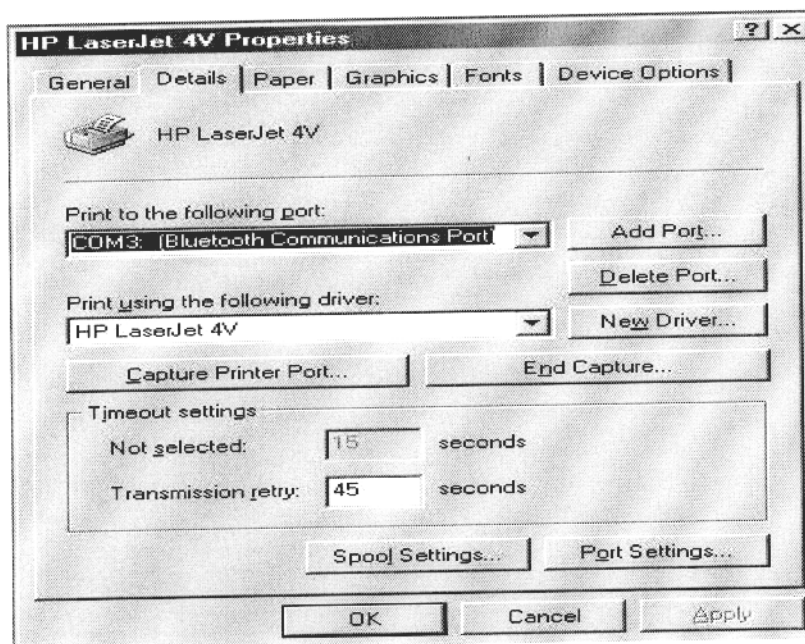
1. Uncheck **Enable bidirectional support**.



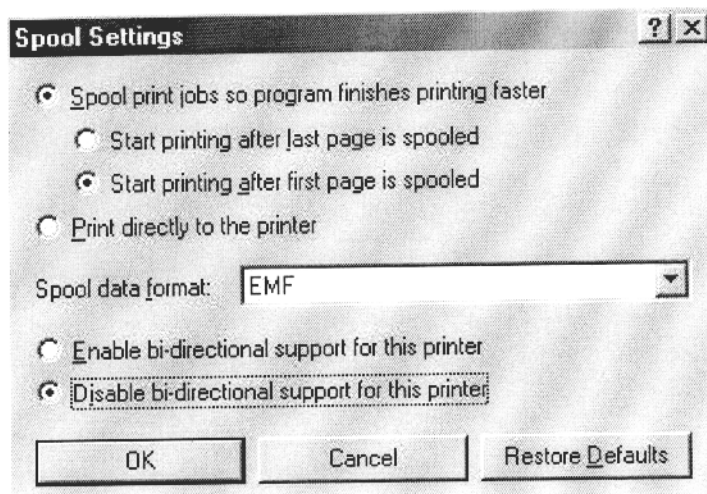
2. Click on the **Configure Port.** Button, then the **COM X Properties** prompt window will be shown and chose the **115200** port speed under the **Bits per second** drop down menu.



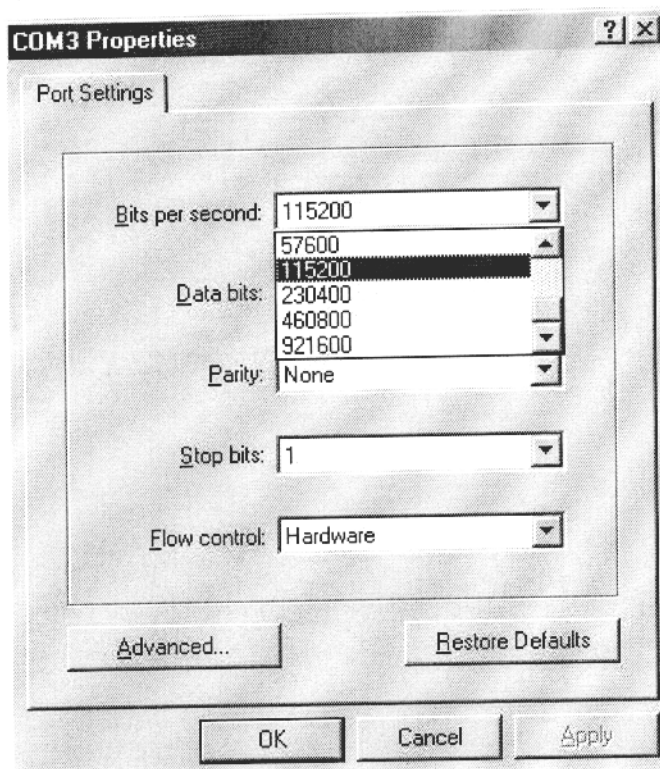
3. Afterwards, click the **OK** button, which will take you back to the **Properties** prompt window, then click the **Apply** button and finally, click the **OK** button.
- ✎ If your system is running Window 98SE/ME, and select the **Details** tab.



1. Click on the **Spool Setting** button, please select **Disable bi-directional support for this printer** and click on the **OK** button which will take you back to the **Properties** prompt window like above, and please go to the next step below.



2. Click on the **Port Setting..** button, and then the **COM X Properties** prompt window will be shown and chose **115200** port speed under the **Bits per second** drop down menu.



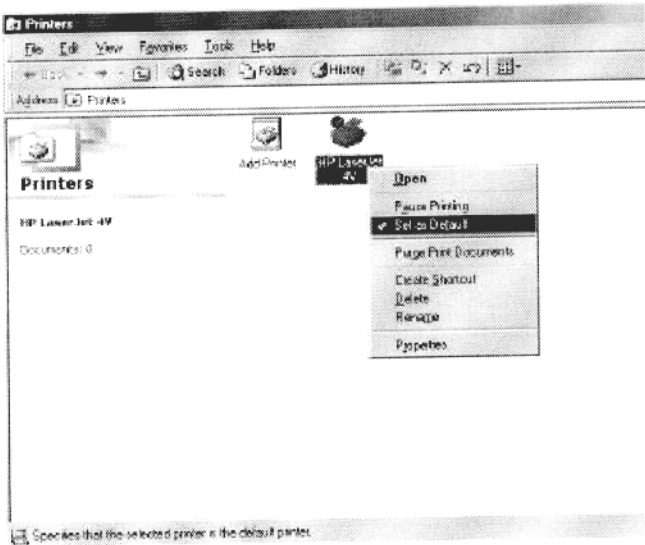
3. Afterwards, click the **OK** button, which will take you back to the **Properties** prompt window, then click the **Apply** button and finally, click the **OK** button.

**Congratulations!! You finish setting for BT-PA01.**

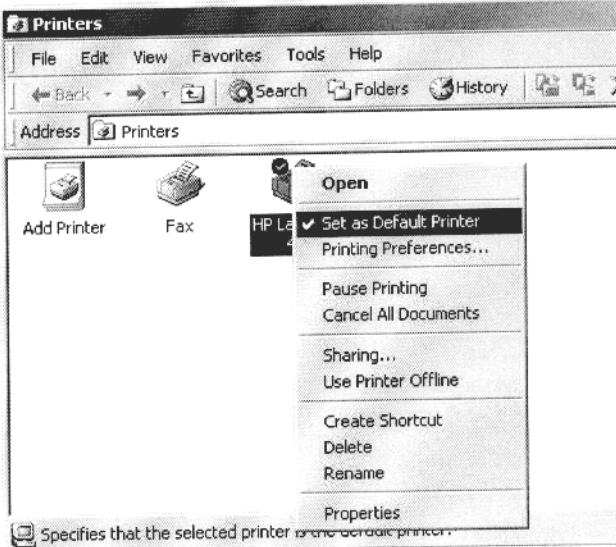
**E.CONNECTIVITY**

This section will help you verify the connectivity of the BT-PA01.


- 1. If you have more that one printer, please set the one with BT-PA01 as the default printer.

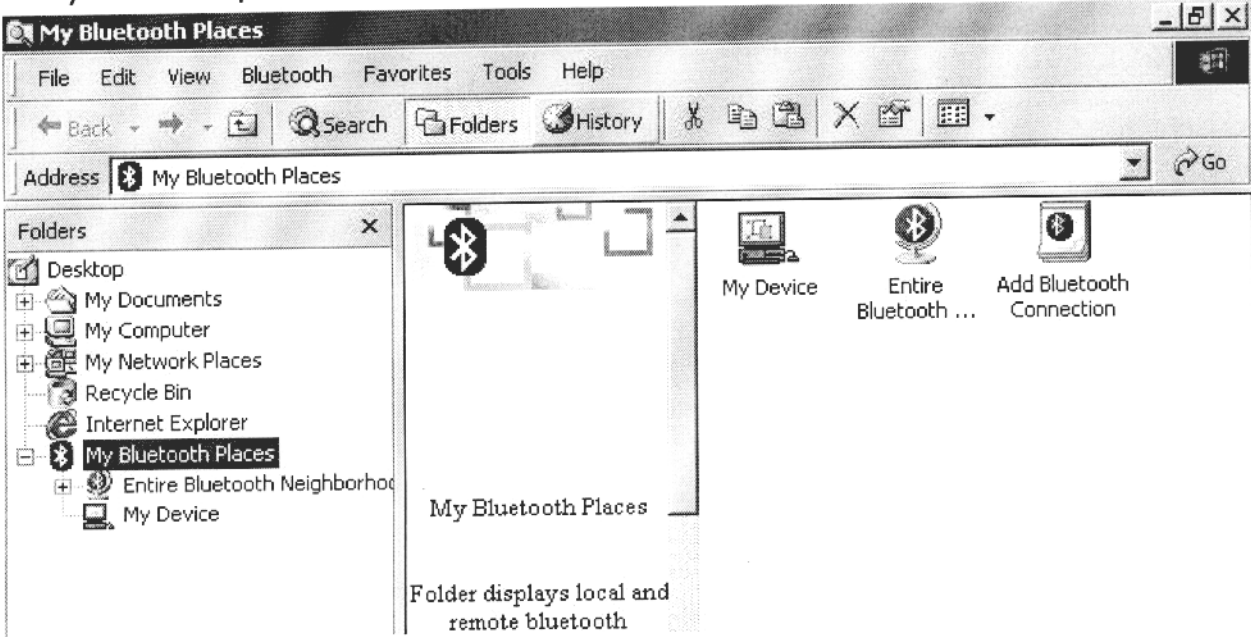


Window 98SE/ME

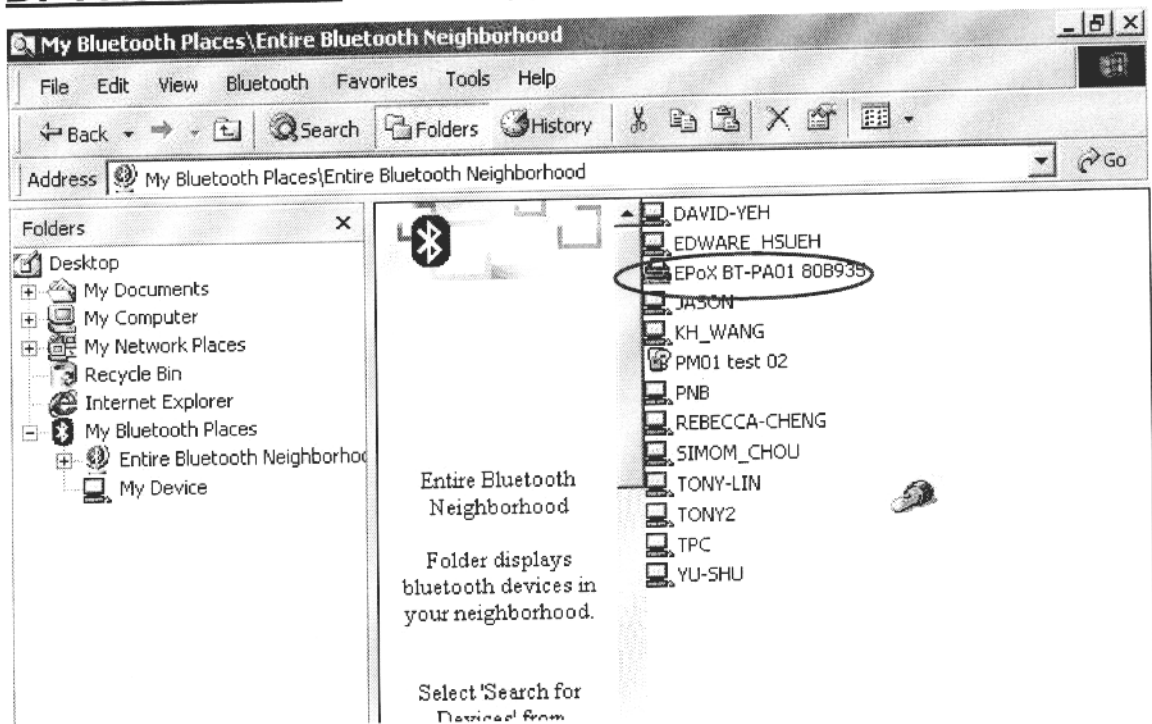


Window 2000/XP

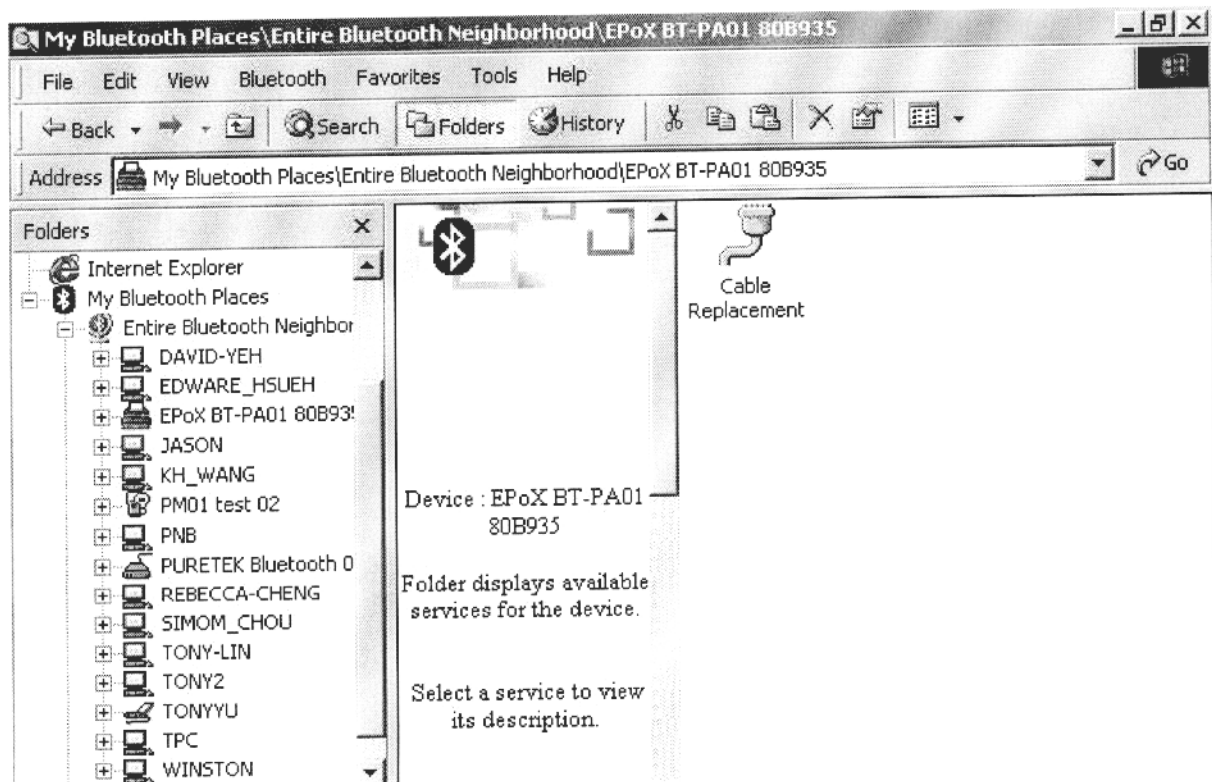
- 2. Please double click the Bluetooth icon , and open the **My Bluetooth Places** (Widcomm Bluetooth Software) window at your computer screen.



3. Double click on the **Entire Bluetooth Neighborhood** icon, and right click on your mouse, the choose **Refresh**. The **EPoX BT-PA01 xxxxxx** should appear.



4. Please double click on **EPoX BT-PA01 xxxxxx** icon, then the **Cable Replacement** icon should be shown.



5. Please double click on the **Cable Replacement** icon. Afterwards, its color should change to green when it has successfully connected.

☞ ***Note1: If your Bluetooth device is set to high security, the default PIN code is "0000".***

## **F. TROUBLESHOOTING**

If you are unable to print from your laptop or other device to the BT-PA01, then check the following:

1. Make sure that the **Cable Replacement** icon turns to green before using the BT-PA01. If the icon is not shown as green in cooler, then there is no Bluetooth wireless connection. Please refer to steps E. 4. & 5. Make sure the printer's power is on.
2. If the icon turned to green after double-clicking on the **Cable Replacement** icon and you cannot print, check the BT-PA01 physical connection to the printer. Also make sure that there is enough paper on the printer for printing.
3. If everything checks out ok, but you still cannot print. Please reset the BT-PA01 and unplug the power to the printer. This will reset both devices at the same time.
4. The BT-PA01 emulates a serial port, therefore the printer driver must support printing to a hardwired serial port. Check with your printer manufacturer in this is the case.

## G. PRINTERS THAT ARE TESTED AND VERIFIED TO

### WORK WITH THE EPoX BT-PA01

HP	COMPAQ
DESKJET 930C	IJ600
LASERJET 4V	
LASERJET 8100PCL	SAMSUNG
LASERJET 2200D	ML-1200
LASERJET 4050	
LASERJET 8000PCL	SHARP
LASERJET 4550PS	AR-235
LASERJET 4100PS	
PHOTOSMART P1100	EPSON
DESKJET 870CXI	LQ-1010C
DESKJET 1220C	LQ-2080C
DESKJET 850C	Stylus COLOR 1520
DESKJET 550C	Photo 790
DESKJET 1120C	
DESKJET 1125C	NEC
DESKJET 640C	PINWRITER P8000C+
DESKJET 920C	
DESKJET 610C	

## **H.NOTICES**

**FC** Tested To comply With FCC Standards  
FOR HOME OR OFFICE USE

### **FCC-B Radio Frequency Statement**

This equipment has been tested and found to comply with the limits for a class B digital device, pursuant to part 15 of the FCC rules. These limits are designed to provide reasonable protection against harmful interference when the equipment is operated in a commercial environment. This equipment generates, uses and can radiate radio frequency energy and, if not installed and used in accordance with the instruction manual, may cause harmful interference to radio communications. Operation of this equipment in a residential area is likely to cause harmful interference, in which case the user will be required to correct the interference at hi own expense.

#### **Notice 1**

The changes or modifications not expressly approved by party responsible for compliance could void the user's authority to operate the equipment.

#### **Notice 2**

Shielded interface cable and A.C. power cord, if any, must be used in order to comply with the emission limits.

#### **Notice 3**

The antenna used for this transmitter must be installed to provide a separation distance of at least 20cm from all persons and must not be co-located or operating in conjunction with any other antenna or transmitter.

## Branch offices

### **EPoX Headquarter**

EPoX Computer Co., LTD.

10F, 346, Chung San Rd. Sec 2, Chung Ho City Taipei Hsien, Taiwan

TEL: 886-2-2247-9888 FAX: 886-2-2247-7888

<http://www.epox.com.tw/> E-mail: [sales@epox.com.tw](mailto:sales@epox.com.tw)

### **EPoX-USA**

EPoX International Inc.

531 East Jamie Ave La Habra, CA 90631 U.S.A.

TEL: 714-680-0898 FAX: 714-680-0858

<http://www.epox.com/html/english/default.htm> E-Mail: [sales@epox.com](mailto:sales@epox.com)

### **EPoX-Europe**

EPoX Europe Computer B.V.

Noordkade 64, 2741 EZ Waddinxveen, Netherlands

TEL: 31-0182-633355 FAX: 31-0182-632744

<http://www.epox.nl/> E-mail: [sales@epox.nl](mailto:sales@epox.nl)

### **EPoX-Germany**

Elito-EPoX Computer GmbH..

41, Nuernberger Strasse, D-91257, Pegnitz, Germany

TEL: +49-9241-9917-15 FAX: +49-9241-9917-71

<http://www.elito-epox.com/> E-mail: [info@elito-epox.com](mailto:info@elito-epox.com)

### **EPoX-Korea**

EPoX Korea Computer.

RM601, Princetel Building 13-20, Youido--Dong, Youngdungpo-Gu., Seoul, Korea

TEL: + 882-66729788-9 FAX: + 882-66729787

<http://www.epox.com.tw/> E-mail: [epoxkorea@goldnet.ne.kr](mailto:epoxkorea@goldnet.ne.kr)