

Bluetooth™

EPoX PRINTER ADAPTER

~ User's Guide ~

DISCLAIMER OF WARRANTIES

There are no warranties which extend beyond the description on the face of the EPoX limited warranty. EPoX expressly excludes all other warranties, express or implied, regarding its products; including any implied warranties of merchantability, fitness for a particular purpose or non-infringement. This disclaimer of warranties shall apply to the extent allowed by state laws in the states of United States in which state laws do not allow or limit the exclusion of the implied warranties.

USER'S GUIDE

Thank you for purchasing an EPoX Bluetooth Printer Adapter! Your printer will soon be Bluetooth enabled, allowing you to print remotely from desktop PCs, notebook computers, PDAs, Pocket PCs and many other Bluetooth devices without any cables.

A. ITEMS INCLUDED IN THIS PACKAGE

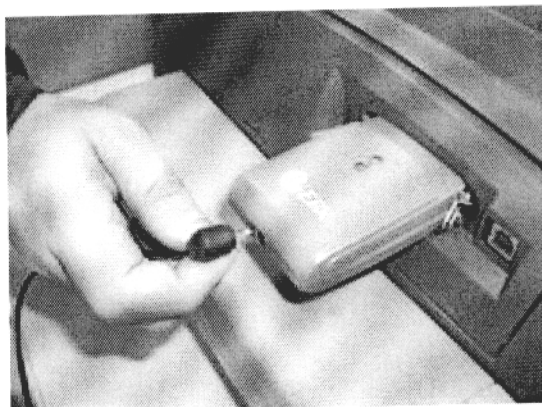
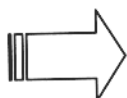
- 1 EPoX Bluetooth Printer Adapter
- 1 User Guide
- 1 AC/DC Power Adapter

B. FEATURES & SPECIFICATION

- ✂✂ Bluetooth Profile Supported: Serial Port
- ✂✂ Printer Speed: Up to 115,200bps
- ✂✂ Chipset: CSR BlueCore 02
- ✂✂ Buffer Memory: 32K Bytes SRAM
- ✂✂ Power Consumption: 0.7 Watt, 6 Vdc
- ✂✂ Power Adapter : Input AC 100~240 Volts
: Output DC 6V @ 1A
- ✂✂ Frequency Range: 2.4-2.4835 GHz
- ✂✂ Antenna: Build-In
- ✂✂ Receive Sensitivity: -80dBm (typical)
- ✂✂ Range : >10 meters (typical 30 meters at line of sight)
- ✂✂ Operation System Supported Windows 98SE/ME/2000/XP

C. PRINTER ADAPTER HARDWARE INSTALLATION

Plug the EPoX Printer adapter into the parallel printer port of your printer as shown below. Now, your printer has become Bluetooth enabled. Congratulations!!



Plug BT-PA01 into the printer port.

Plug the power into the BT-PA01

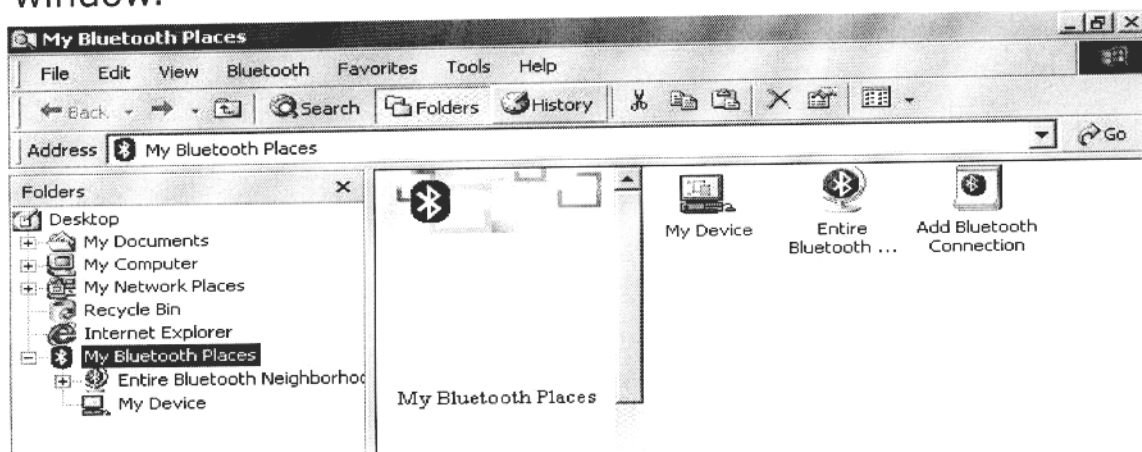
Note: Please do not use any other power adaptor with the EPoX Printer Adaptor (BT-PA01). If you have problems, contact your dealer for a replacement.

D. ESTABLISHING A CONNECTION

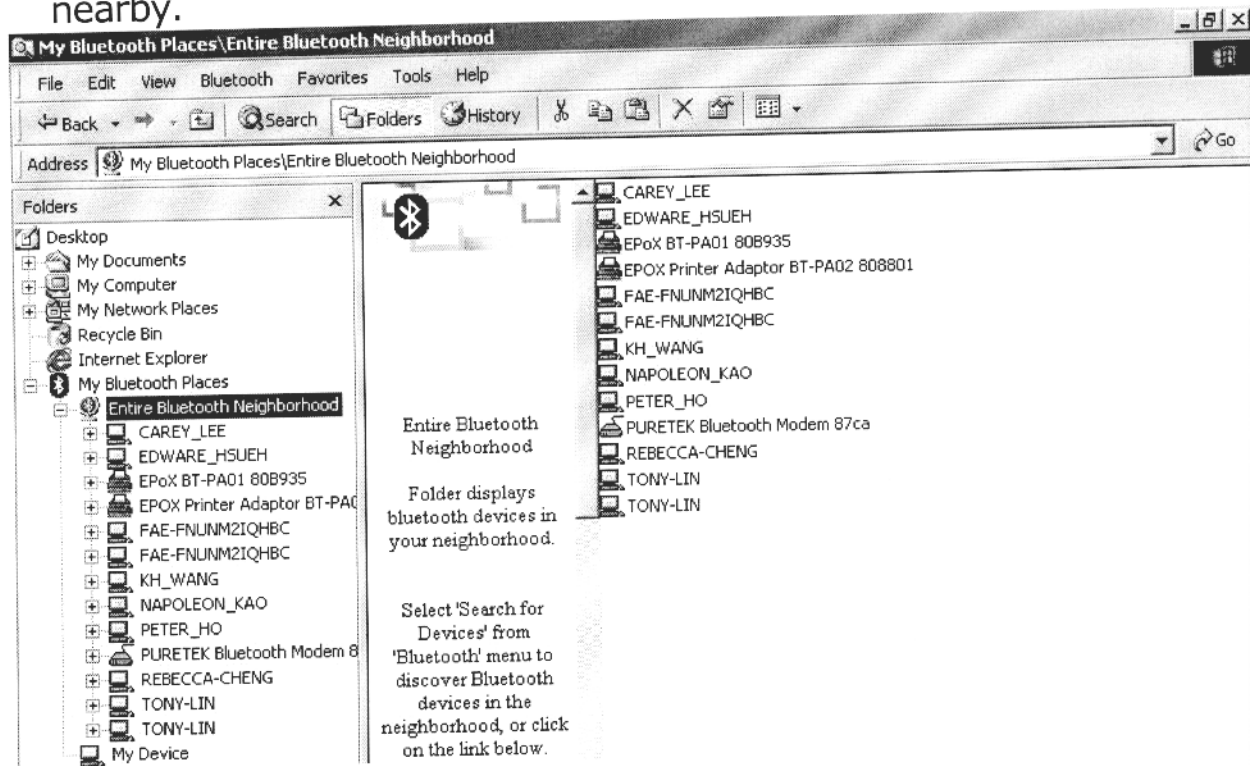
To establish the Bluetooth connection, you have to configure the serial port setting on the Bluetooth device. If your Bluetooth device is an EPoX BT-MB02 or BT-DG02 or BT-DG03, after the Widcom protocol stack is installed, then follow the steps below. If your Bluetooth device is other than EPoX, please contact your manufacturer to obtain more information.

D.1: Checking the COM port used by BT-PA01 Bluetooth Printer Adapter:

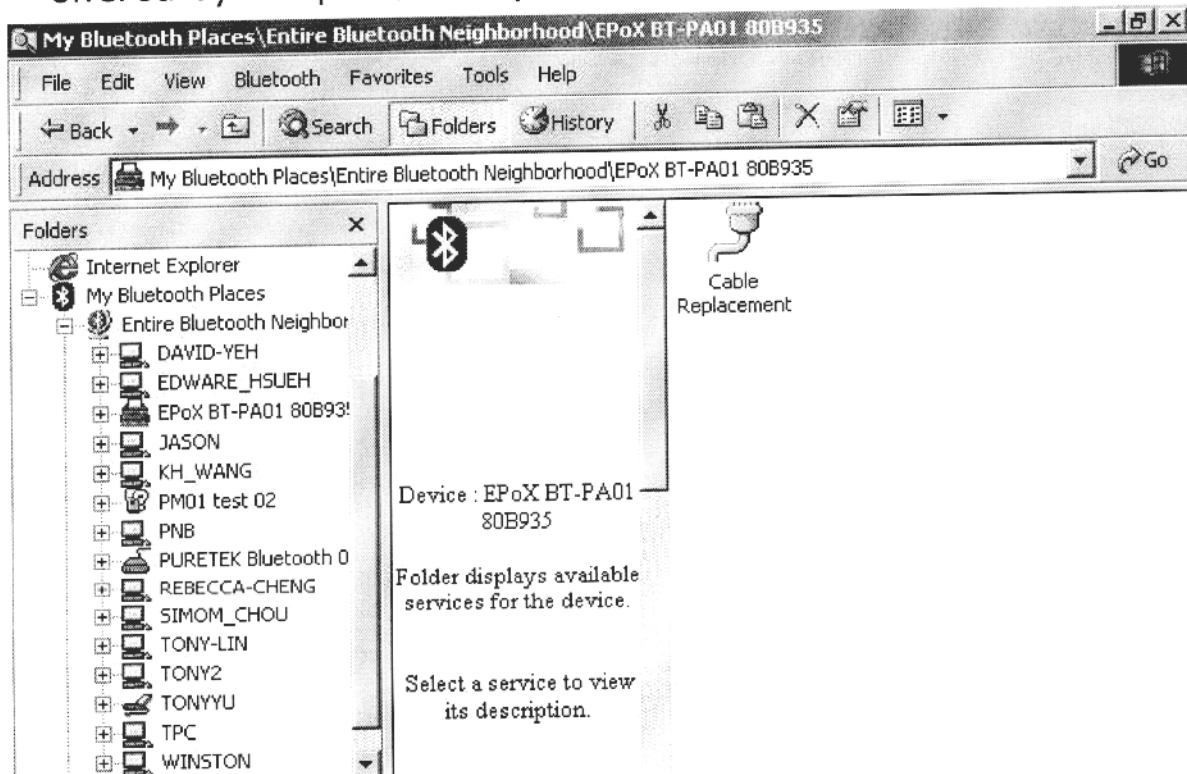
- 1 Double click the Bluetooth icon  to enter the **My Bluetooth** window.



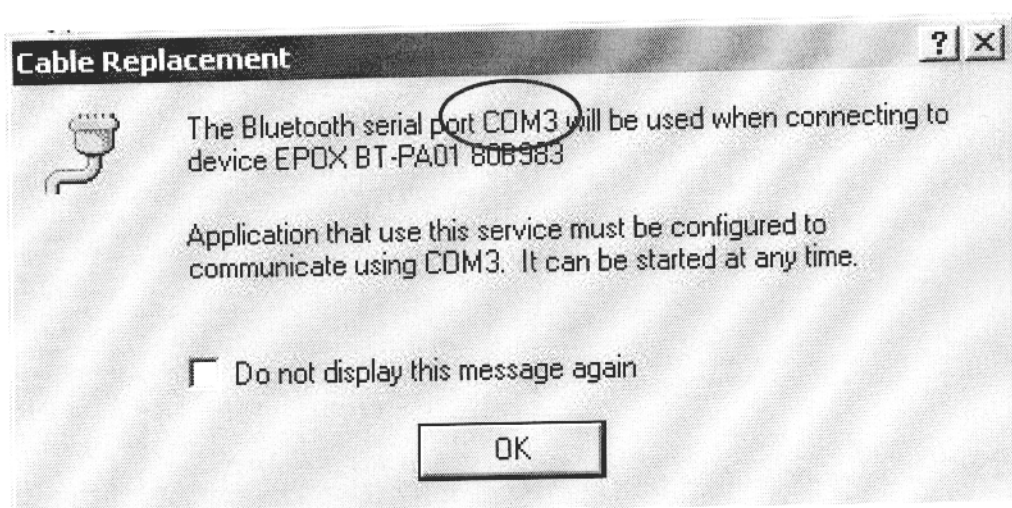
- 2 By double-clicking on the **Entire Bluetooth Neighborhood** icon, you will find all the local Bluetooth enabled devices nearby.



- 3 Find the **EPoX BT-PA01 XXXXXX** and double-click on it, the **Cable Replacement** icon be shown along with all the services offered by the printer adapter.



- 4 By double-clicking on the **Cable Replacement** icon, the "Cable Replacement" prompt window appears. It will show the COM port the EPoX Printer adapter will be using. Please make note of it and remember it.

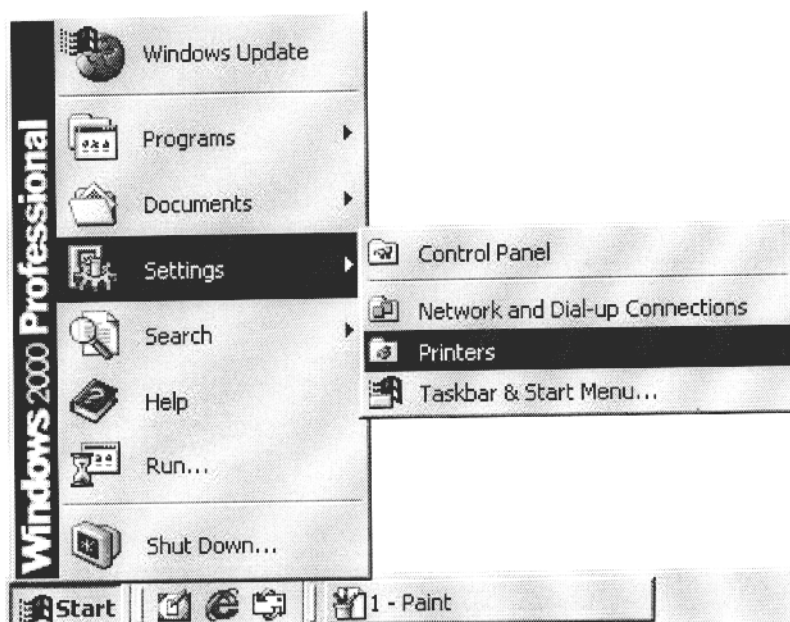


☞ **Note: The COM port is automatic assigned and cannot be overridden.**

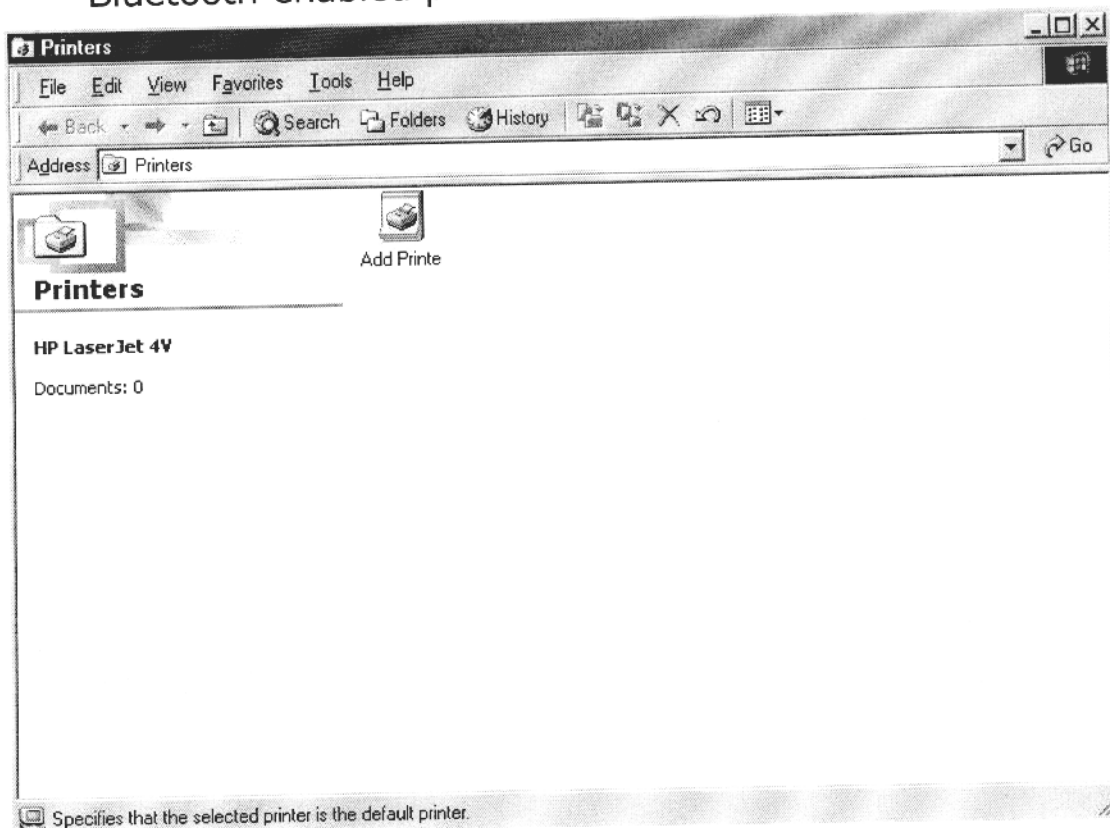
D.2. Specifying the COM port on your printer:

✍ If you haven't installed the printer driver yet, please install it now.

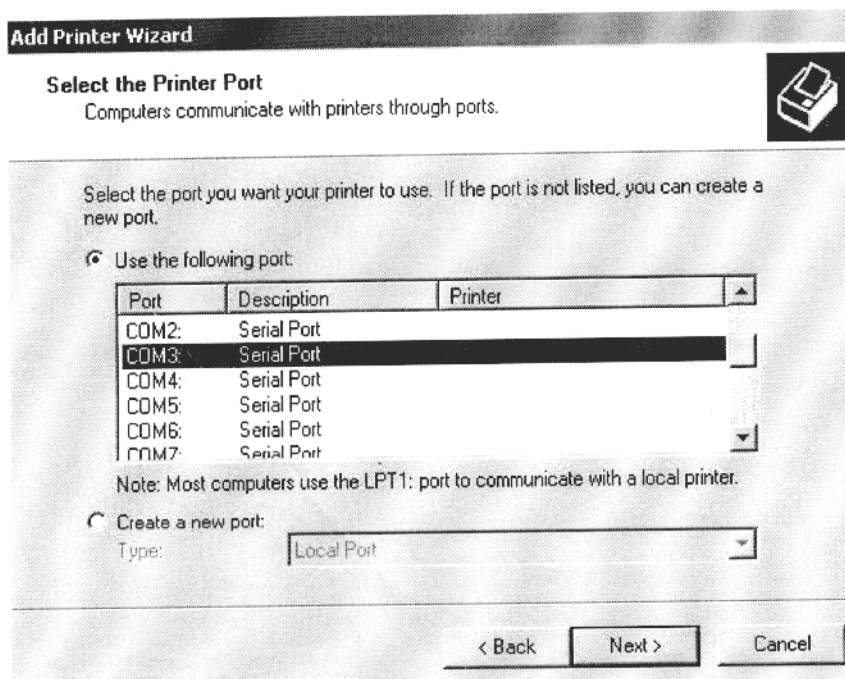
1. By clicking the window **Start** button, select **Setting** and, then **Printers**, the printer setup window will display on the screen.



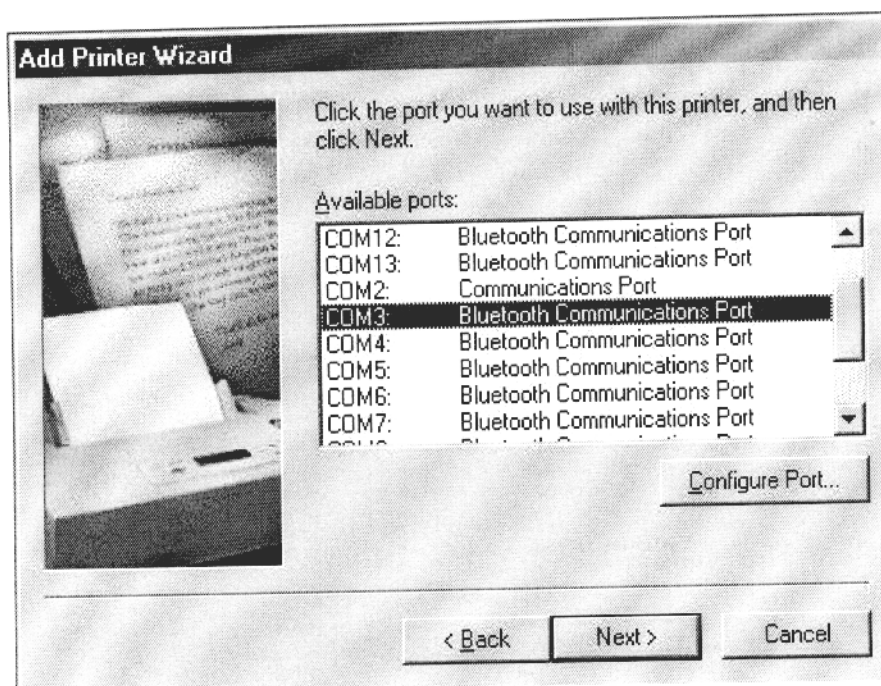
2. By double-clicking on the **Add Printer** icon, you will proceed with the printer driver installation for the Bluetooth enabled printer.



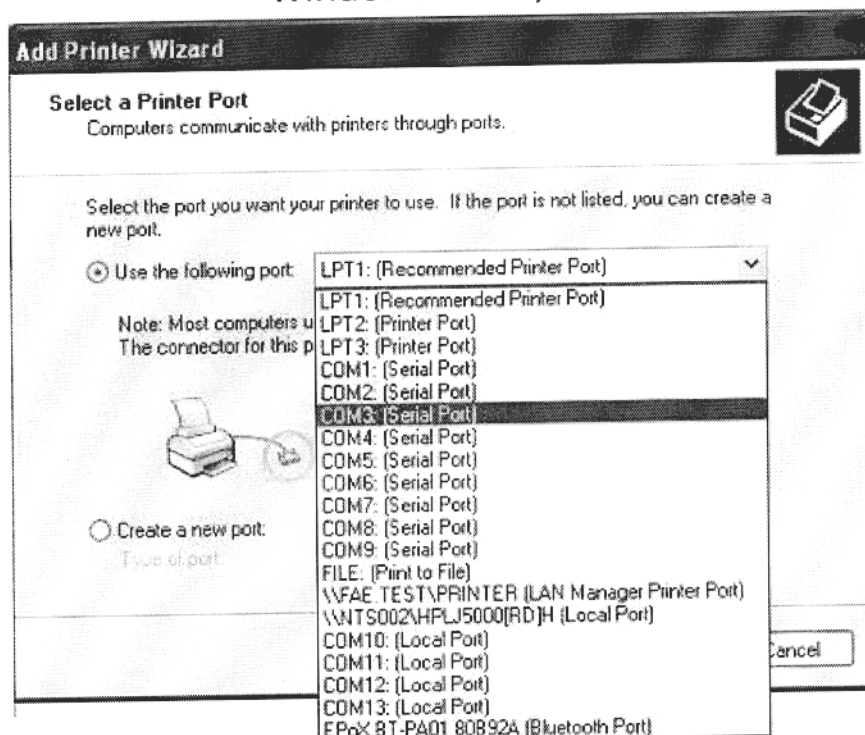
3. Follow the installation steps to set up the printer. When choosing the printer port, please set the COM port as same as the BT-PA01 (Reference D.1 4).



Windows 2000



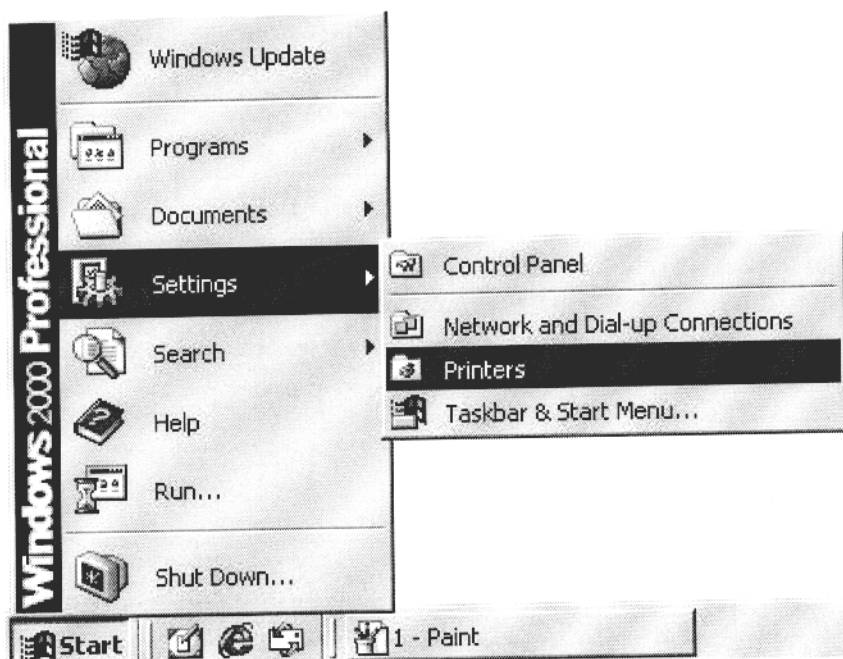
Windows 98SE/ME



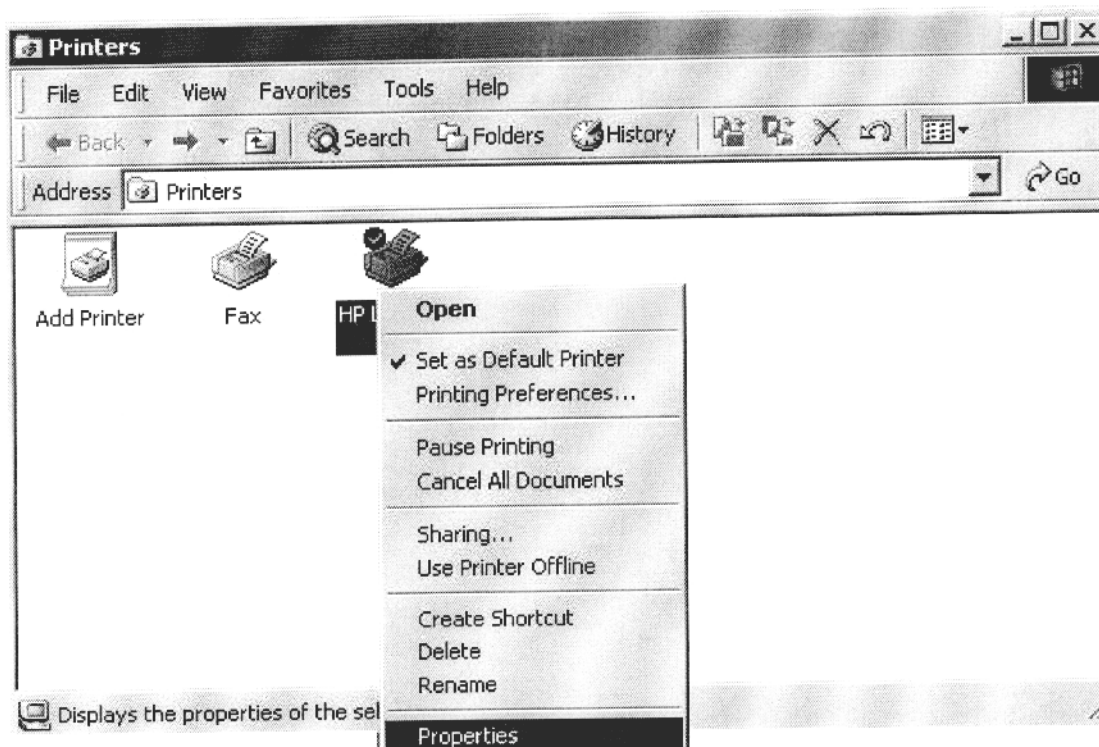
Windows XP

~~66~~ If your printer is already installed with its driver, please change the com port to the same BT-PA01, and following the steps below:

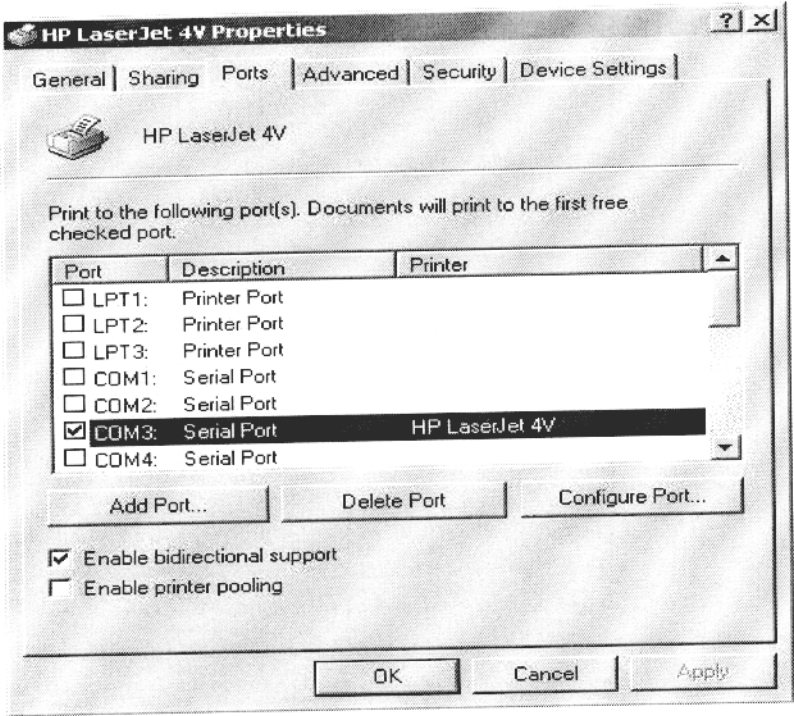
1. By clicking the **Start** button, select **Setting**, and then click on **Printers** the printer setup window will be displayed.



2. Please select the printer connected to the BT-PA01, and right-click on its icon, and then select **Properties** to enter the properties window.



3. If your system is running Window 2000/XP, select the **Ports** tab. Choose the COM port that is being used by the BT-PA01 and press **OK**. You are done!



If your system is running Window 98SE/ME, and select the **Details** tab. Choose the COM port that is being used by the BT-PA01 and press **OK**. You are done!

