

English(US/UK)

- Combination Keys Function Setting

With Combination Keys Function Setting, please press "Start" and give your input, and press "Stop" when you finish the selection. (Maximal: 3 characters)

- Basic Commands

Cut, Copy, Paste, Delete, Revoke (Undo), All (Select All), Search, New, Print, Save

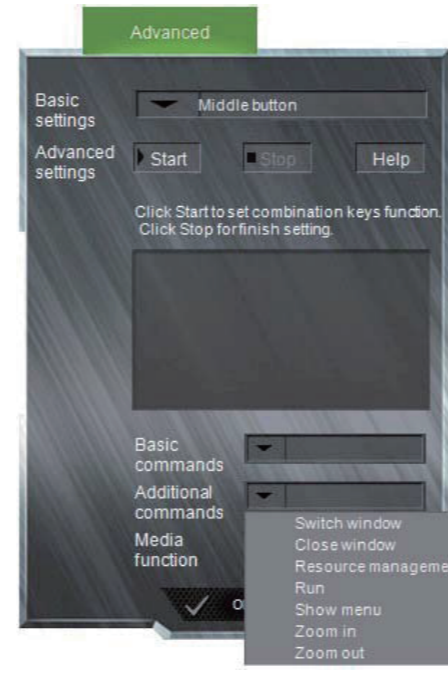


12

English(US/UK)

- Additional Commands

Switch Windows, Close Window, Resource Management (My Computer), Run, Show Menu (Show Desktop), Zoom In, Zoom Out.

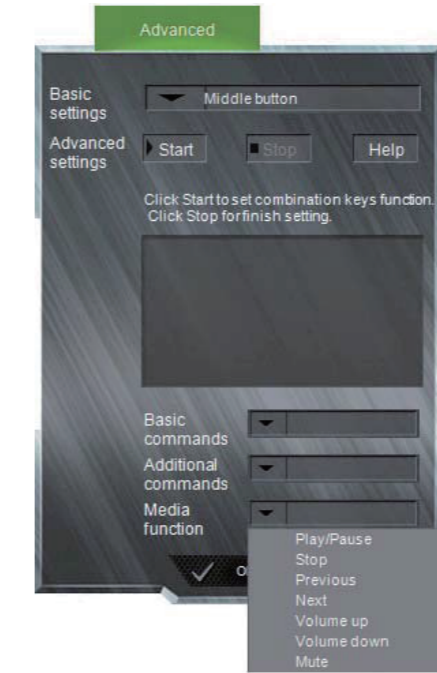


13

English(US/UK)

- Media Functions

Play/Pause, Stop, Previous, Next, Volume Up, Volume Down, Mute



14

English(US/UK)

Sensitivity Settings

Please choose your favorite setting from "Pointer Speed", "Vertical Scrolling", "Double-Click Speed", "DPI Setting", "Current Report Rate", "Indicator Light", and "Scrolling Wheel". After the selection, please press "APPLY". You can also press "OK" to apply and leave from the program.

("Current Report Rate" is only showing USB Report rate. Wired mode is 1000Hz, wireless gaming mouse mode is 500Hz, and wireless energy-saving mode is 250Hz.)

("Scrolling Mode" means that when you open the multi-windows, you can just move pointer to the windows then use scroll function without click the windows)



15

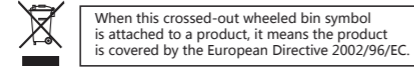
1, Changes or modifications not expressly approved by the party responsible for compliance could void the user's authority to operate the equipment

2, NOTE: This equipment has been tested and found to comply with the limits for a Class B digital device, pursuant to Part 15 of the FCC Rules. These limits are designed to provide reasonable protection against harmful interference in a residential installation. This equipment generates, uses and can radiate radio frequency energy and, if not installed and used in accordance with the instructions, may cause harmful interference to radio communications. However, there is no guarantee that interference will not occur in a particular installation. If this equipment does cause harmful interference to radio or television reception, which can be determined by turning the equipment off and on, the user is encouraged to try to correct the interference by one or more of the following measures:

- Reorient or relocate the receiving antenna.
-- Increase the separation between the equipment and receiver.
-- Connect the equipment into an outlet on a circuit different from that to which the receiver is connected.
-- Consult the dealer or an experienced radio/TV technician for help.

DISPOSAL OF YOUR OLD PRODUCT

Your product is designed and manufactured with high quality materials and components, which can be recycled and reused.



To prevent any potential negative consequences for the environment and human health, please act according to your local rules regarding the disposal of this device. This marking or statement shall include the following or similar text

CAUTION
RISK OF EXPLOSION IF BATTERY IS REPLACED BY AN INCORRECT TYPE
DISPOSE OF USED BATTERIES ACCORDING TO THE INSTRUCTIONS

This device complies with Industry Canada licence-exempt RSS standard(s). Operation is subject to the following two conditions: (1) this device may not cause interference, and (2) this device must accept any interference, including interference that may cause undesired operation of the device

Le présent appareil est conforme aux CNR d'Industrie Canada applicables aux appareils radio exempts de licence. L'exploitation est autorisée aux deux conditions suivantes: (1) l'appareil ne doit pas produire de brouillage, et (2) l'utilisateur de l'appareil doit accepter tout brouillage radioélectrique subi, même si le brouillage est susceptible d'en compromettre le fonctionnement.

This equipment complies with FCC RF radiation exposure limits set forth for an uncontrolled environment. This device and its antenna must not be co-located or operating in conjunction with any other antenna or transmitter.

16