

Quick Start Guide

Ultra Long Range Wireless
Video Extender

GWLRHDTX
PART NO. Q1486

Package Contents

1

- 1 x Ultra Long Range Wireless Transmitter
- 1 x IR In Cable
- 1 x IR Out Cable
- 1 x Video Cable
- 1 x Audio Cable
- 1 x Power Adapter
- 1 x Quick Start Guide

System Requirements

2

Display:

HDTV, HD Display or HD Projector with:
HDMI input

Media Source:

HDMI output

Cables:

HDMI cable

Receiver compatibility table:

GWLRHDRX	GWLRHDTX, GWLRDVITX, GWLRVGATX
GWLRDVIRX	GWLRHDTX, GWLRDVITX
GWLRVGARX	GWLRVGATX

Transmitter compatibility table:

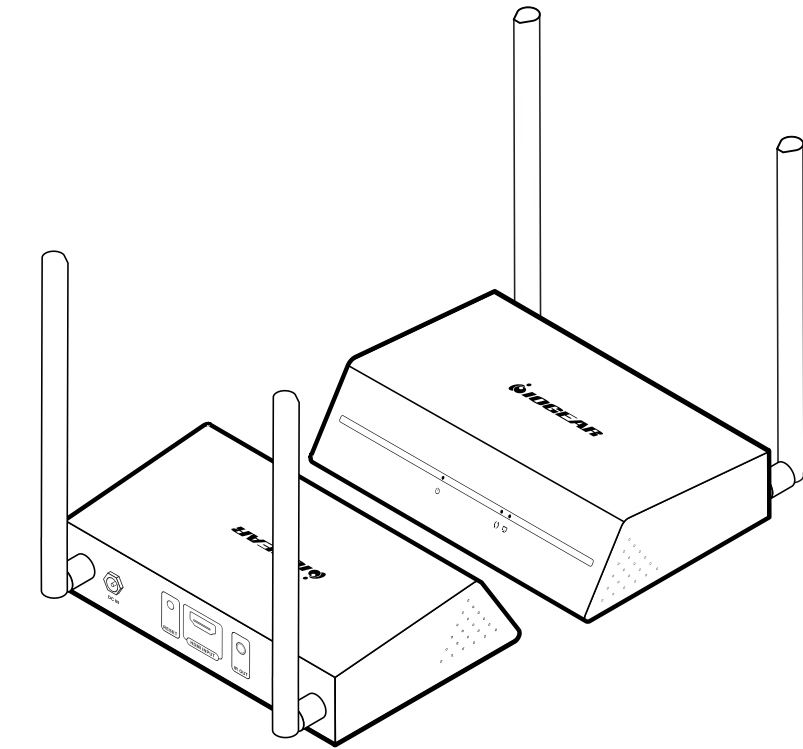
GWLRHDTX	GWLRHDRX, GWLRDVIRX
GWLRDVITX	GWLRHDRX, GWLRDVIRX
GWLRVGATX	GWLRVGARX, GWLRHDRX, GWLRDVIRX

Overview

3

Note that you will need a separate audio transmission when using DVI transmitter and/or receiver. If you use a GWLRVGATX, you can connect the audio cable (provided).

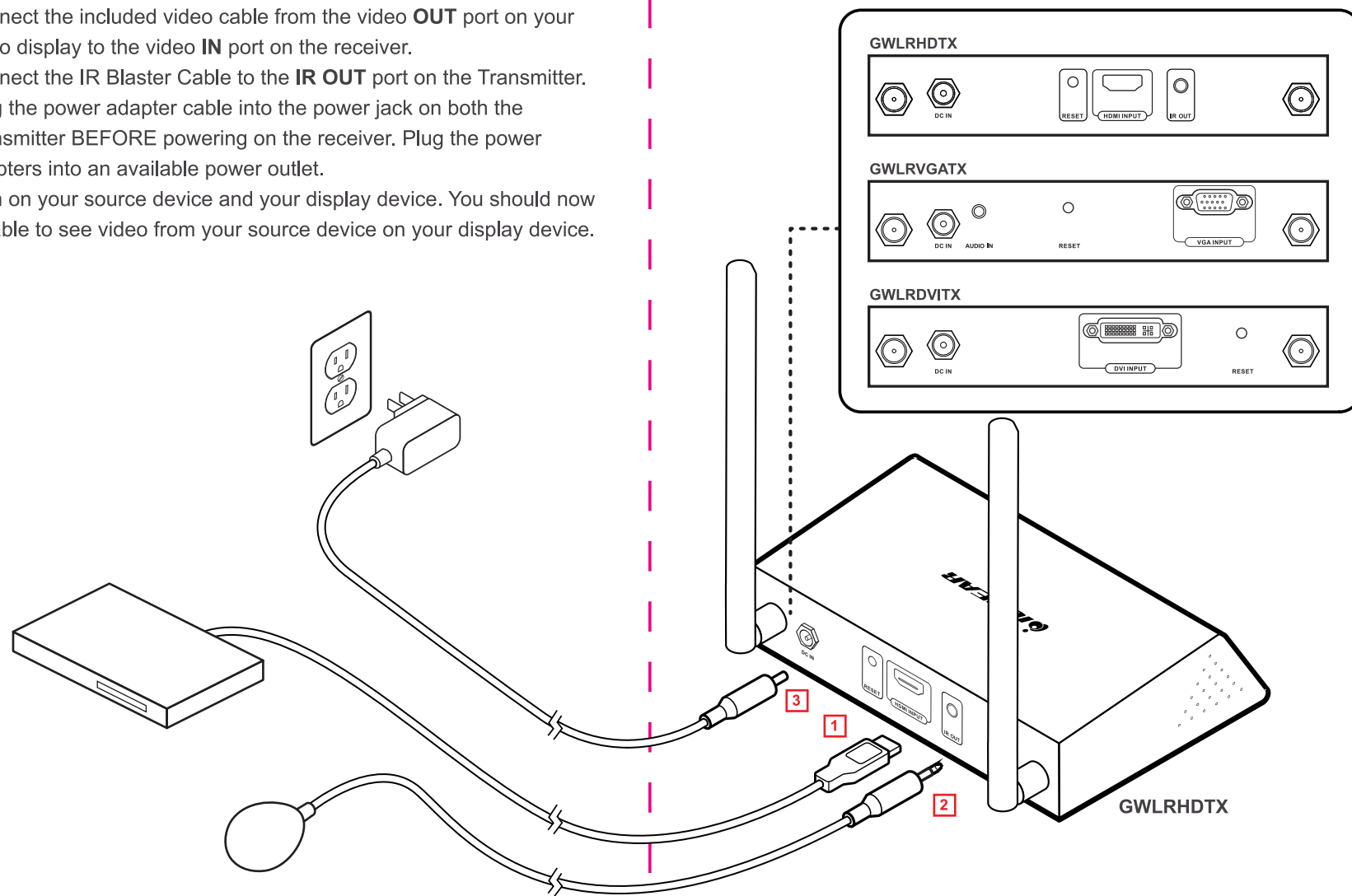
Please note that this Quick Start Guide covers multiple models, please refer to your model numbers for your specific video connection. GWLRHDTX/RX for HDMI video connection, GWLRDVITX/RX for DVI video connection and GWLRVGATX/RX for VGA video connection.



Hardware Installation

4

1. Connect the included video cable from the video **OUT** port on your video display to the video **IN** port on the receiver.
2. Connect the IR Blaster Cable to the **IR OUT** port on the Transmitter.
3. Plug the power adapter cable into the power jack on both the Transmitter **BEFORE** powering on the receiver. Plug the power adapters into an available power outlet.
4. Turn on your source device and your display device. You should now be able to see video from your source device on your display device.



Compliance Information

FCC Statement

This equipment has been tested and found to comply with the limits for a Class B digital device, pursuant to part 15 of the FCC Rules. These limits are designed to provide reasonable protection against harmful interference in a residential installation. This equipment generates, uses and can radiate radio frequency energy and, if not installed and used in accordance with the instructions, may cause harmful interference to radio communications. However, there is no guarantee that interference will not occur in a particular installation. If this equipment does cause harmful interference to radio or television reception, which can be determined by turning the equipment off and on, the user is encouraged to try to correct the interference by one or more of the following measures:

- o Reorient or relocate the receiving antenna.
- o Increase the separation between the equipment and receiver.
- o Connect the equipment into an outlet on a circuit different from that to which the receiver is connected.
- o Consult the dealer or an experienced radio/TV technician for help.

Caution: Any changes or modifications to this device not explicitly approved by manufacturer could void your authority to operate this equipment.

This device complies with part 15 of the FCC Rules. Operation is subject to the following two conditions: (1) This device may not cause harmful interference, and (2) this device must accept any interference received, including interference that may cause undesired operation.

To comply with FCC RF exposure compliance requirements, this grant is applicable to only mobile configurations. The antennas used for this transmitter must be installed to provide a separation distance of at least 20 cm from all persons and must not be co-located or operating in conjunction with any other antenna or transmitter.

IC warning statements:

-English Warning Statement:

"This device complies with Industry Canada licence-exempt RSS standard(s).

Operation is subject to the following two conditions:

- (1) this device may not cause interference, and
- (2) this device must accept any interference, including interference that may cause undesired operation of the device."

This Class B digital apparatus complies with Canadian ICES-003.

-French Warning Statement:

"Le présent appareil est conforme aux CNR d'Industrie Canada applicables aux appareils radio exempts de licence. L'exploitation est autorisée aux deux conditions suivantes: (1) l'appareil ne doit pas produire de brouillage, et (2) l'utilisateur de l'appareil doit accepter tout brouillage radioélectrique subi, même si le brouillage est susceptible d'en compromettre le fonctionnement."

Cet appareil numérique de la classe B est conforme à la norme NMB-003 du Canada.

The digital apparatus complies with Canadian CAN ICES-3 (B)/NMB-3(B).

To comply with ISED RF exposure compliance requirements, this grant is applicable to only mobile configurations.

The antennas used for this transmitter must be installed to provide a separation distance of at least 20 cm from all persons and must not be co-located or operating in conjunction with any other antenna or transmitter.

Pour se conformer aux exigences de conformité à l'exposition RF d'ISED, cette subvention ne s'applique qu'à des configurations mobiles.

Les antennes utilisées pour cet émetteur doivent être installées fournir une distance de séparation d'au moins 20 cm de toutes les personnes et ne doivent pas être localisées ou en coopération avec une autre antenne ou émetteur.