

折叠方式: 对折

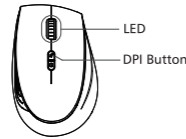
折叠成品尺寸: 120*120MM

正面

• DPI Switch

The mouse has 1000/1500/2000 of DPI for your choice freely. The factory default is 1000DPI. You can choose the DPI you like by pressing the DPI button, the LED will flash different times according to the difference DPI, and the new setting DPI will be automatically saved under different mode.

DPI	LED flash times
1000dpi	one time
1500dpi	twice
2000dpi	three times



• Touch on wake up

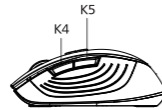
The mouse is with special touch on wake up technology. When your hands leave the mouse for 2s, it will automatically switch to sleep mode, when you touch on the mouse, it will be activated and the LED will flash to remind you its working.

• Energy-saving mode

The mouse is with energy saving mode, when your hands stop moving the mouse or your hand leaving the mouse for 2s, it will automatically switch into the energy-saving mode, which can extend the battery life.

• Side Buttons Feature

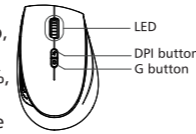
The mouse is with 2 side buttons. For Windows2000 or above, the buttons are defaulted as browser forward and backward buttons. Download the driver, you can also select your preference features to side buttons.



For more function, please download the driver from the website of www.fuhlenstyle.com for your self-definition.

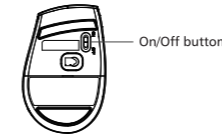
• Low power indicator

The mouse has low power indicator, when the power is nearly used up, the LED will flash to remind you to replace the battery. When install battery, LED will flash, if flash 5 times means remaining power is 100%, if flash 4times means remaining 75% power, flash 3times means remaining 50% power, flash 2times means remaining 25%, flash 1time means low power that you need to replace battery.



• Power On/Off

There is power On/Off button at the bottom of the mouse, if you won't use it for a long time or you have a trip, we'd suggest you to turn the button off. When you use it again, you'd just turn it on.



• Receiver Build-in design

The mouse is with build-in design, when you stop using the nano USB receiver, it can be stowed away in a hidden compartment inside the mouse. It is more convenient for storing.



• Battery Disposal

Don't throw away the batteries into the fire. After replace the batteries, put them to the right place for recycling.

• Specification

Frequency band: 2402MHz ~ 2479MHz
 Power supply: 1.5V
 Operation current: ≤6mA(1.5V)
 Acceleration: up to 20G
 Resolution: DPI 1000/1500/2000 switchable
 Energy-saving mode/Precision mode/Gaming mode power consumption: ≤9mW/≤14mW/≤25mW

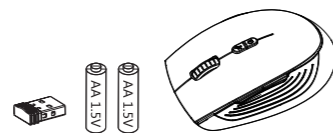
A53G

反面

Quick Start Guide

Contains:

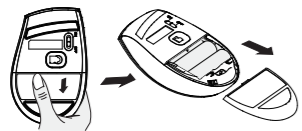
- Wireless RF mouse
- USB nano receiver
- 2xAA battery
- User guide



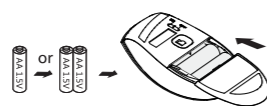
Thanks for buying Fuhlen products, please read this user guide carefully before use.

Installation

1 Switch the On/Off button to OFF and open the battery cover.



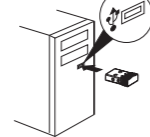
2 Insert one or two A A batteries as the diagram on the battery tray indicates. Close the battery cover.



3 Switch the On/Off button to On. The LED will flash 1-5 times according to the remaining battery power.



4 Plug the USB receiver into an available USB port on your computer. Press any key to start.



Set Wireless Connection

The A53G mouse and USB receiver is pre-paired before packing. Users can use it after installing the battery.

1. Turn on the computer.
2. Plug the USB receiver into an available USB port on your computer.
3. Install the battery into the mouse. Press any key to start.



If your wireless mouse will not pair with the USB receiver, you will need to download the Pairing Software tool to your computer from the Fuhlen website: <http://www.fuhlenstyle.com/download.jsp>, and pair the mouse and receiver according to the instruction.

Finished setting the wireless connection of the mouse, you can enjoy the wireless freedom.

Mouse Feature

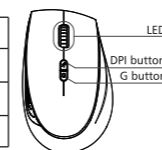
• LED indicator

There's LED indicator under the scrolling wheel. When switching the mode & DPI, or touch on mouse, or power low, it will flash differently to remind you the status of mouse.

• Mode switch

There're three modes for option, the default mode is energy saving mode, you can choose the mode you like by pressing the G button. The LED will flash different colours according to different modes.

Mode	LED Color	Default DPI	Speed	Remarks
Energy saving mode	Blue	1000dpi	125 RPS	power saving for office use
Precise Mode	Red	1500dpi	250 RPS	For designing
Gaming Mode	Purple	1500dpi	500 RPS	Full speed for gaming



Federal Communications Commission (FCC) Notice:

Changes or modifications not expressly approved by the party responsible for compliance could void the user's authority to operate the equipment

NOTE: THE MANUFACTURER IS NOT RESPONSIBLE FOR ANY RADIO OR TV INTERFERENCE CAUSED BY UNAUTHORIZED MODIFICATIONS TO THIS EQUIPMENT. SUCH MODIFICATIONS COULD VOID THE USER'S AUTHORITY TO OPERATE THE EQUIPMENT.

NOTE: This equipment has been tested and found to comply with the limits for a Class B digital device, pursuant to Part 15 of the FCC Rules. These limits are designed to provide reasonable protection against harmful interference in a residential installation. This equipment generates, uses and can radiate radio frequency energy and, if not installed and used in accordance with the instructions, may cause harmful interference to radio communications. However, there is no guarantee that interference will not occur in a particular installation. If this equipment does cause harmful interference to radio or television reception, which can be determined by turning the equipment off and on, the user is encouraged to try to correct the interference by one or more of the following measures:

- Reorient or relocate the receiving antenna.
- Increase the separation between the equipment and receiver.
- Connect the equipment into an outlet on a circuit different from that to which the receiver is connected.
- Consult the dealer or an experienced radio/TV technician for help.

This device complies with Part 15 of the FCC Rules. Operation is subject to the following two conditions: (1) this device may not cause harmful interference, and (2) this device must accept any interference received, including interference that may cause undesired operation.