

Bluetooth Wireless Stereo Solution

User Manual (GBMA201, GBMH201, GBMHKIT)



Welcome

Now you can experience the most comfortable way to listen to your favorite music – without wires! IOGEAR's wireless Bluetooth stereo headphones incorporate Bluetooth technology to let you enjoy music or other audio up to 66 feet from the source, in beautifully crisp mp3-quality stereo sound.

With 3 different models available, IOGEAR offers the solution that best fits your needs. If you already have a Bluetooth-enabled device that supports A2DP, all you need is IOGEAR's Bluetooth Headphones (GBMH201). To add Bluetooth functionality to your regular home stereo, MP3 player, TV set, and all other equipment with a 3.5mm, RCA or Phono audio jacks, simply use IOGEAR's Bluetooth transmitter (GBMA201). For a complete solution, simply use IOGEAR's GBMHKIT, which includes the Bluetooth headphones and audio transmitter

Free yourself from confining wires and immerse yourself into the music with IOGEAR's wireless Bluetooth stereo solution.

© 2005 IOGEAR. All Rights reserved. M0051

IOGEAR, the IOGEAR logo, are trademarks or registered trademarks of IOGEAR, Inc. Microsoft and Windows are registered trademarks of Microsoft Corporation. IBM is a registered trademark of International Business Machines, Inc. Macintosh, G3/G4 and iMac are registered trademarks of Apple Computer, Inc. All other brand and product names are trademarks or registered trademarks of their respective holders. IOGEAR makes no warranty of any kind with regards to the information presented in this document. All information furnished here is for informational purposes only and is subject to change without notice. IOGEAR, Inc. assumes no responsibility for any inaccuracies or errors that may appear in this document.

Table of Contents

Package Contents2
System Requirements3
Introduction4
Instructions for GBMHKIT/GBMA2017
- Operation8
- Pairing headphones and audio transmitter10
Instructions for GBMH20113
- Operation14
- Pairing with Bluetooth-enable device15
Using Headphones with Bluetooth cell phone19
Audio Playback: How it works23
Troubleshooting26
Technical Support27
FCC Statement28
Limited Warranty29

Package Contents

GBMH201

- 1– Bluetooth Stereo Headphone
- 1– Detachable Microphone
- 1– Carrying Bag
- 1– Power Adapter
- 1– Quick Start Guide
- 1– Warranty/Registration card

GBMHKIT:

- 1– Bluetooth Stereo Headphone
- 1– Bluetooth Audio Transmitter
- 1– Detachable Microphone
- 1– Carrying Bag
- 1– Power Adapter
- 1– Power Cable Splitter
- 1– 3.5mm Extension Cable
- 1– 3.5mm to RCA Audio Cable
- 1– 3.5mm to 1/4" Stereo Phono Connector
- 1– Quick Start Guide
- 1– Warranty/Registration Card

GBMA201

- 1– Bluetooth Audio Transmitter
- 1– 3.5mm to RCA audio cable
- 1– 3.5mm to ¼" Stereo Phono Connector
- 1– 3.5mm Extension Cable
- 1– Power Adapter
- 1– Quick Start Guide
- 1– Warranty/Registration Card

System Requirements

For stereo sound (headphones):

Bluetooth-enabled music source must support
Advanced Audio Distribution Profile (A2DP)

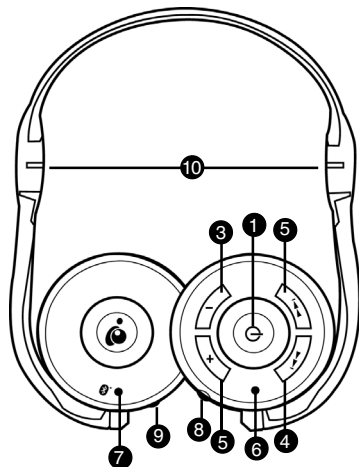
For cell phone use:

Bluetooth cell phone must support either Headset
or Hands-Free Profile

*Note: Functionality of the Back/Forward headphone buttons requires Bluetooth software with support for the Audio/Video Remote Control Profile (AVRCP).

Headphones

1. Center button – multiple functions include
 - a) turn headset on/off;
 - b) pause/play music;
 - c) mute/un-mute sound
 - d) accept/terminate phone call
2. Volume up button
3. Volume down button
4. Forward button*
5. Back button*
6. Bluetooth LED
7. Power LED
8. Microphone jack
9. Power jack
10. Foldable neck band



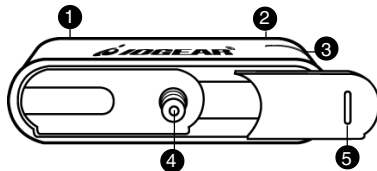
Introduction

Audio Transmitter :

1. ON/OFF button
2. Power jack
3. Status LED
4. 3.5mm audio connector
5. Removable rubber for iPod Mini users

iPOD Mini Users

To properly fit iPOD Mini, the connector on the audio transmitter is slideable, Simply remove the rubber located to the right side of the audio connector. You will then be able to slide the audio connector to the right for a perfect fit on the iPOD Mini.



Headset LEDs

Blue LED

- Solid when connected to a Bluetooth device
- Blinks slowly when the power is on and it is waiting for a Bluetooth connection
- Blinks rapidly when ringing (incoming call)

Red LED

- Solid when charging
- Off when fully charged

Audio Transmitter LEDs

Blue LED

- Blinks rapidly when Powered ON
- Solid when connected
- Blinks twice per second when searching for headphones

Red LED

- Solid when charging
- Solid when charging
- Off when finished charging

Operation - GBMH KIT

HEADPHONES

Charge Headphones

1. Before first use, you must fully charge the headphones for at least 2 hours.
2. Each full charge gives you approximately 6.5 hours of continuous operation.

Turn ON Headphones

1. Press and hold the Center button for approximately **6** seconds
2. The Blue LED will quickly flash, indicating it's ready to accept a Bluetooth connection

Turn OFF Headphones

1. Press and hold the Center button for approximately **4** seconds until the blue LED turns off

AUDIO TRANSMITTER

Charge transmitter

1. Before first use, you must fully charge transmitter for at least 2 hours
2. Each full charge gives you approximately 6.5 hours of continuous operation

Turn ON transmitter

1. Press and hold the ON/OFF button for **2** seconds
2. The blue LED will begin flashing rapidly, waiting for a Bluetooth connection

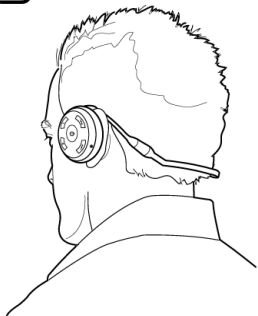
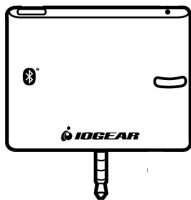
Turn OFF transmitter

1. Press and hold the ON/OFF button for **5** seconds; the blue LED will turn off

Operation - GBMH KIT

For GBMHKIT Only:

The Bluetooth KIT (headphones and transmitter) should already come pre-paired from factory, and all you need to do is turn both of them ON. Follow the procedure below:



Step 1-Turn ON Bluetooth Headphones

Press and hold the Center button for approximately **six** seconds until the blue LED starts flashing

Step 2 -Turn ON Bluetooth transmitter

Press and hold the ON/OFF button for approximately **three** seconds until the blue LED starts flashing

Step 3 - Auto-connect

Wait approximately **60** seconds as both devices search for each other and auto-connect. When the blue LED stops flashing and becomes solid on both devices, this indicates successful connection

Step 4 - Finished

Simply plug in the transmitter to your favorite music device and enjoy!

Note: *The Bluetooth headphones may also be used with a Bluetooth-enabled device that supports the A2DP profile. For more information, consult the section of the manual "Instructions for GBMH201".*

Operation - GBMA201

GBMA201:

Setting the transmitter in Inquiry Mode

Follow the procedure below if:

- You purchased the headphones (GBMH201) and transmitter (GBMA201) separately (**not part of a kit**),
or
- You have GBMHKIT, but are having trouble getting the headphones and transmitter paired, or
- You are using non-IOGEAR Bluetooth headphones with the transmitter (GBMA201). For a list of compatible Bluetooth headphones visit www.iogear.com

Step 1 – Turn OFF

Turn OFF both audio transmitter and headphones

Step 2 – Inquiry Mode

Press and hold the ON/OFF button on the transmitter for approximately **6** seconds to invoke inquiry mode.

Step 3 – Turn ON

Turn ON Bluetooth headphones by pressing the Center button for **6** seconds. If using non-LOGEAR headphones, consult your manual for instructions.

Step 4 – Auto-Connect

The transmitter will now begin searching for Bluetooth headphones within range and connect to the closest one. Please be patient as it may take 60-120 seconds for both devices to connect.

Step 5 – Finished

When the blue LED becomes solid on both devices, this indicates successful connection

If you encounter problems, please consult the troubleshooting section of this manual.

Operation - GBMH201

HEADPHONES

Charge Headphones

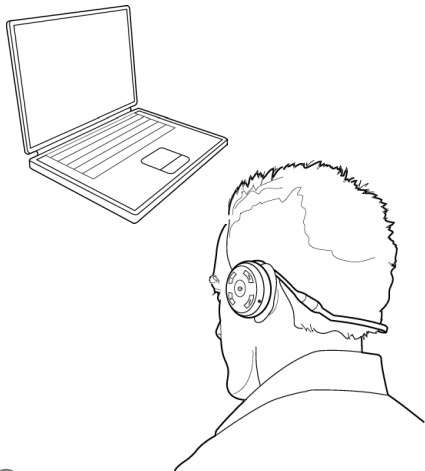
1. Before first use, you must fully charge the headphones for at least 2 hours.
2. Each full charge gives you approximately 6 hours of continuous operation.

Turn ON Headphones

1. Press and hold the Center button for approximately six seconds
2. The Blue LED will quickly flash, indicating it's ready to accept a Bluetooth connection

Turn OFF Headphones

1. Press and hold the Center button for approximately four seconds until the blue LED turns off



The Bluetooth headphones can be used with any computer, PDA, phone, MP3 player, or any other type of device that supports the following Bluetooth profiles:

- A2DP (Advanced Audio Distribution Profile) for stereo sound
- AVRCP (Audio Video Remote Control Profile) for functionality of the Back/Forward buttons

Operation - GBMH201

Below is an example on how to pair and connect to the headphones using Widcomm Bluetooth software version 4.0.x. (PC version).

Step 1 - Turn ON Bluetooth Headphones

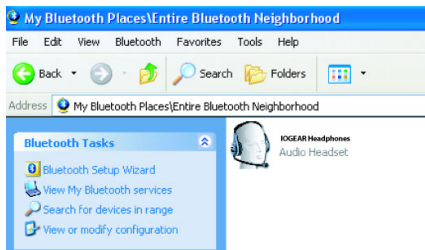
Press and hold the Center button for approximately **6** seconds until the blue LED starts flashing

Step 2 – Open Bluetooth software

Make sure Bluetooth function is enabled on your computer and open Bluetooth application (ex: My Bluetooth Places).

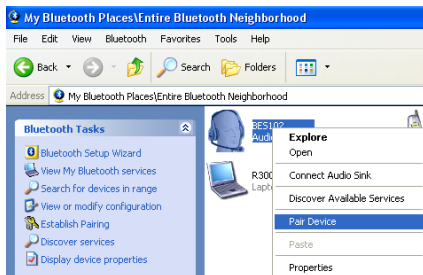
Step 3 - Search for devices in range

On the left side, click on “View devices in range” to search for the IOGEAR headphones.



Step 4 – Pairing

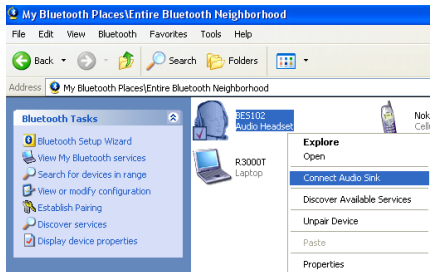
When the IOGEAR Headphones are found, right click on its icon and select Pair Device
If prompted for a PIN code, enter “0000” (four zeroes)



Operation - GBMH201

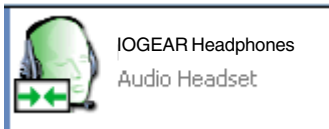
Step 3 – Connect

Once paired, right-click on its icon and select the option “Connect Audio Sink”. Wait while the computer/PDA connects to the Headphones. Upon successful connection, the headphones blue LED will stop flashing and become solid



Step 4 – Finished

When connected, the headset icon will turn green as below. You may now exit the Bluetooth software.



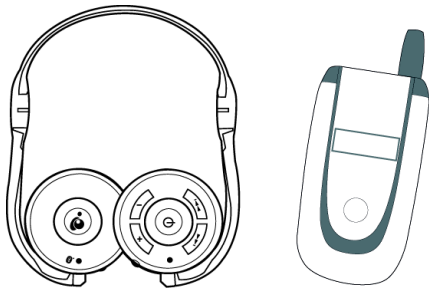
Simply launch your music/movie software application and enjoy!

If you encounter problems, please consult the troubleshooting section of this manual.

Using With A Cell Phone

Once paired with your Bluetooth cell phone, you can make/receive phone calls through the IOGEAR headphones (using the included detachable microphone).

If you make/receive a phone call during music playback, pressing the Center button will pause the music and transfer audio to the cell phone, and automatically resume music at the end of your call.



Phone Pairing Procedure

Step 1 – Setup Phone

Make sure your cell phone's Bluetooth functionality is turned ON

Step 2 – Turn ON Bluetooth headphones

Press and hold the Center button for approximately 6 seconds until the blue LED starts flashing

Step 2 – Search for Bluetooth headphones

Follow your cell phone instructions to search for Bluetooth devices

Step 3 – Pair and Connect

Once the IOGEAR headset is found, select it and pair to it. If prompted for a PIN code, enter "0000" (four zeroes).

Step 4 – Finished

You should now be able to use the Bluetooth headset to make/receive phone calls through your Bluetooth cell phone.

Operation

Making a call

Simply dial the number as usual from your cell phone; the voice will be directed to the headset

During music/audio playback, pressing keys on your cell phone will automatically transfer control of the headphones to the cell phone, and music will be paused. Upon phone call termination, the music will resume after approximately 5 seconds.

Making a call

Simply dial the number as usual from your cell phone; the voice will be directed to the headset

During music/audio playback, pressing keys on your cell phone will automatically transfer control of the headphones to the cell phone, and music will be paused. Upon phone call termination, the music will resume after approximately 5 seconds.

Answering a call

1. You will hear a ring tone on the headset during an incoming call
2. Press the Center button once to pick up the incoming call. During music/audio playback, pressing the Center button will pause the music, and resume after phone call is terminated.

Tip: If you wish to reject the call, press any other button

Ending a call

1. Press the Center button to end the call

Mute/Un-mute microphone

- During a phone conversation, you may mute the microphone so that your voice will not be heard on the other end; simply press the Forward or Back button
- To un-mute, press the Forward or Back button again

How It Works

Using Headphones with Bluetooth transmitter

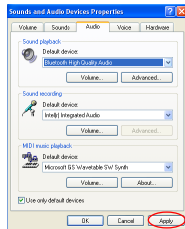
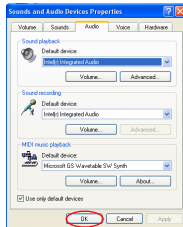
Simply follow the pairing procedure as indicated on the manual, and then plug in the audio transmitter to any of your devices. The music will transfer to the headset, as if you were using any standard headphones.

Using Headphones with Bluetooth Computer

Typically, after establishing the Bluetooth connection with the headphones, you will be able to listen to audio from your device without having to do any changes to your sound settings.

If this is not the case, however, you may make this change manually by doing the following:

1. Go to Control Panel and then double-click on “Sounds and Audio Devices.”
2. This will open up the Sound Properties window
3. Select the Audio tab on top, and under the “Sound playback option”, make sure to select “Bluetooth High Quality Audio.” Now click Apply and then OK.
4. Now, the default device for audio playback will be the Bluetooth Headphones.



Operation

Description	Headphones with Bluetooth Transmitter (GBMA201)	Headphones with Bluetooth device
Press Center button during music playback	mute/un - mute music	pause/play music
Press Back/Forward button during music playback	Will make a beep noise; invalid operation*	Go Back or Forward on music playlist
Volume Up/Down	Turn volume up/down	Turn volume up/down

*The Bluetooth transmitter only has the capability to send audio signals out. For functionality of the Back/Forward buttons, your Bluetooth-enabled device or software must support the AVRCP Bluetooth profile.

Troubleshooting

1. The headphone control buttons have stopped responding or behave strangely.

This might be an indication that the batteries are low and need re-charging. Please allow the batteries to charge for approximately 2 hours.

2. I have followed the instructions but I do not hear any sound on the headphones.
 - a) Make sure volume is not muted on your computer/PDA or other device.
 - b) Turn volume up on the headset control buttons
 - c) If your music/video software application was opened prior to setting up the Bluetooth headset, you might need to close the application and re-open it again
 - d) Make sure all required drivers for your sound card have been properly loaded in your computer; otherwise, the headphones will not function.
3. If you are having trouble pairing the IOGEAR Bluetooth headphones with the audio transmitter, follow the procedure below:
 - a) Turn OFF audio transmitter and headphones
 - b) Press and hold the ON/OFF button on the transmitter for approximately six seconds to set it in Inquiry Mode.
 - c) Turn ON Bluetooth headphones
 - d) The headphones and transmitter will search for each other and auto-connect.
 - e) When the blue LED becomes solid on both devices, this indicates successful connection

Technical Support

If you need technical support, please check out our IOGEAR Tech Info Library (T.I.L.) at www.iogear.com/support for the latest tips, tricks, and troubleshooting. The IOGEAR T.I.L. was designed to provide you with the latest technical information about our products. Most of the answers to your questions can be found here, so please try it out before contacting technical support.

Technical Support is available Monday through Friday from 7:30 a.m. to 5:30 p.m. PST and can be reached at Toll-Free (866) 946-4327 or by email support@iogear.com

FCC Statement

15.21

You are cautioned that changes or modifications not expressly approved by the part responsible for compliance could void the user's authority to operate the equipment.

15.105(b)

This equipment has been tested and found to comply with the limits for a Class B digital device, pursuant to part 15 of the FCC rules. These limits are designed to provide reasonable protection against harmful interference in a residential installation. This equipment generates, uses and can radiate radio frequency energy and, if not installed and used in accordance with the instructions, may cause harmful interference to radio communications. However, there is no guarantee that interference will not occur in a particular installation. If this equipment does cause harmful interference to radio or television reception, which can be determined by turning the equipment off and on, the user is encouraged to try to correct the interference by one or more of the following measures:

- Reorient or relocate the receiving antenna.
- Increase the separation between the equipment and receiver.
- Connect the equipment into an outlet on a circuit different from that to which the receiver is connected.
- Consult the dealer or an experienced radio/TV technician for help.

Operation is subject to the following two conditions:

- 1) this device may not cause interference and
- 2) this device must accept any interference, including interference that may cause undesired operation of the device.

FCC RF Radiation Exposure Statement:

This equipment complies with FCC radiation exposure limits set forth for an uncontrolled environment. End users must follow the specific operating instructions for satisfying RF exposure compliance. This transmitter must not be co-located or operating in conjunction with any other antenna or transmitter.

Limited Warranty

IN NO EVENT SHALL THE DIRECT VENDOR'S LIABILITY FOR DIRECT, INDIRECT, SPECIAL, INCIDENTAL OR CONSEQUENTIAL DAMAGES RESULTING FROM THE USE OF THE PRODUCT, DISK, OR ITS DOCUMENTATION EXCEED THE PRICE PAID FOR THE PRODUCT.

The direct vendor makes no warranty or representation, expressed, implied, or statutory with respect to the contents or use of this documentation, and especially disclaims its quality, performance, merchantability, or fitness for any particular purpose.

The direct vendor also reserves the right to revise or update the device or documentation without obligation to notify any individual or entity of such revisions, or updates. For further inquires please contact your direct



Contact Information:

23 Hubble • Irvine, CA 92618 • (P)949.453.8782 • (F)949.453.8785 • www.iogear.com