

Limited Warranty

WE'RE HERE TO HELP YOU! NEED ASSISTANCE SETTING UP THIS PRODUCT?

- Make sure you:
1. Visit www.iogear.com for more product information
 2. Visit www.iogear.com/support for live help and product support

Warranty Information

This product carries a 3 Year Limited Warranty. For the terms and conditions of this warranty, please go to <http://www.iogear.com/support/warranty>

Register online at <http://www.iogear.com/register>

Important Product Information

Product Model _____
Serial Number _____

Contact

Toll Free 866-94IOGEAR (USA)
Phone: 949-453-8782
19641 Da Vinci, Foothill Ranch, CA92610
www.iogear.com
support@iogear.com

About Us

- FUN**
IOGEAR offers connectivity solutions that are innovative, fun, and stylish, helping people enjoy daily life using our high technology products.
- GREEN**
IOGEAR is an environmentally conscious company that emphasizes the importance of conserving natural resources. The use of our technology solutions helps reduce electronic waste.



Quick Start Guide

Bluetooth 4.0 USB Micro Adapter

GBUR21
PART NO. 0126

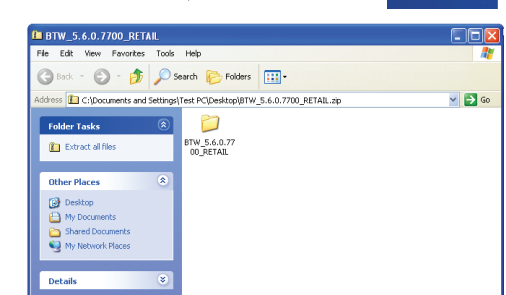
© 2012 IOGEAR

Installation- Windows XP

Start Here!

The Microsoft Bluetooth stack comes included with Service Pack 2 and up for Windows XP. If you already have Service Pack 2 installed, you may choose not to install drivers from the installation CD and instead use the Microsoft Bluetooth drivers. For XP without Service Pack 2 installed, please follow below steps to install WIDCOMM Bluetooth Software.

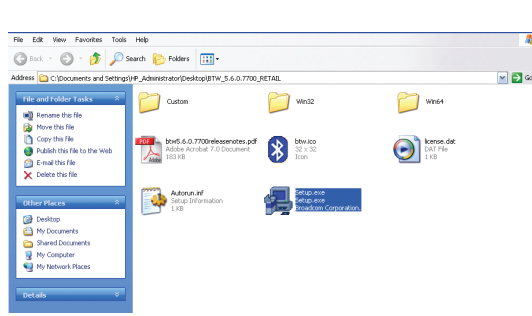
1. Make sure that the IOGEAR Bluetooth adapter is **NOT** plugged into the computer before installing the software. Please download XP driver from www.iogear.com/support/dm.
 - Select GBUR21 as your product from Driver List drop down menu.
 - Save XP driver to your desktop or the directory you prefer
 - Once you complete download process, you will see the BTW_5.6.0.7700_0126 compressed file on your desktop or prefer directory
 - Double click compressed file



1

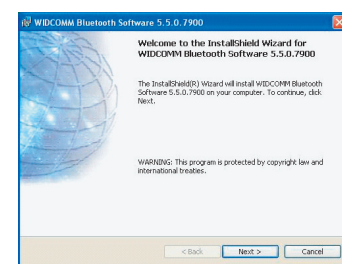
- And uncompressed the file to your desktop or prefer directory and you will see the BTW_5.6.0.7700_RETAL folder on your desktop or prefer directory

- Double click BTW_5.6.0.7700_RETAL folder
- You will see setup.exe file
- Please double click setup.exe for XP driver installation

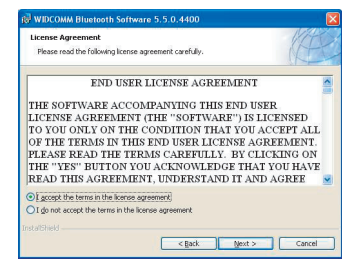


2

2. Click **Next** to continue.

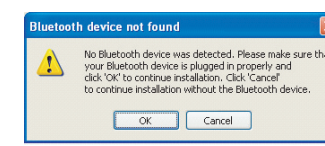


3. If you accept the license agreement, click **Next**.

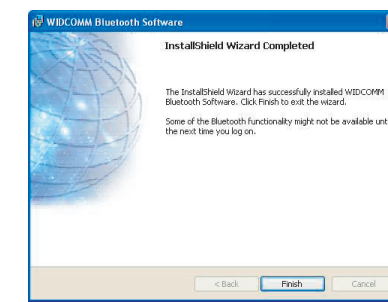


3

4. During the install, a "Bluetooth Device not Found" window will appear. **DO NOT** plug in the Bluetooth adapter at this time, simply click **Cancel** to proceed with the driver installation without connecting the Bluetooth device.



5. Once the driver installation has completed, click **Finish**.



6. Now, it's ok to connect your Bluetooth 4.0 USB Micro Adapter to available USB ports from your computer.

4

Installation - Windows XP Service Pack 2

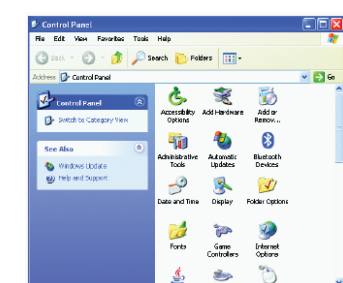
Windows XP Service Pack 2 - Bluetooth Stack
If you are running Windows XP with Service Pack 2 and up, you may use the Bluetooth drivers provided by Microsoft. Keep in mind, however, that this Bluetooth stack has limited Bluetooth profiles support. For more information, please visit the Microsoft website at www.microsoft.com.

1. To use the Microsoft Bluetooth stack, simply plug in your IOGEAR Bluetooth adapter into an available USB port on your computer. Windows will automatically detect the Bluetooth device and install all necessary drivers.
2. You will then see a Bluetooth icon on your tray bar that allows you to perform all Bluetooth operations, as shown below:

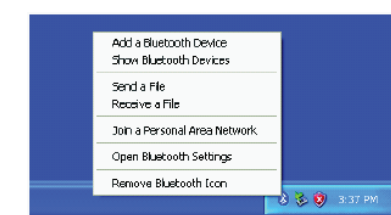


5

3. Optionally, you can find this in **Control Panel > Bluetooth Devices**.



4. To connect with your Bluetooth device, simply right-click on the Bluetooth icon on the tray bar and select **Add a Bluetooth Device**.

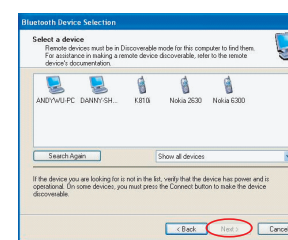


6

5. Make sure to set your Bluetooth device "discoverable" mode and click **Next** to continue.

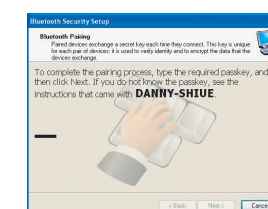


6. Your computer will search for all the Bluetooth devices in your area and list them in the middle pane. Select the desired device, and click **Next** to continue.

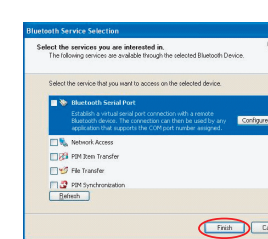


7

7. Please consult the user manual for your Bluetooth device to see if you need a Passkey to pair/establish a connection. In most cases, you can type in a 4 digit passkey when you see this screen to create the pairing with your Bluetooth enabled device.



8. Your Bluetooth device will then connect to the IOGEAR Bluetooth adapter and you can select the services you need. To finish the process, click **Finish** to complete.



8

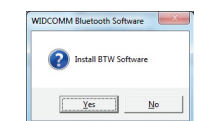
Installation - Windows Vista / Windows 7

The following steps tell you how to install the WIDCOMM Bluetooth driver in Windows 7. Other Windows OS is similar procedures as Windows 7 installation below.

1. Put WIDCOMM Driver CD into CD drive of your PC, an auto-installation program will start to guide you to complete the installation step by step.

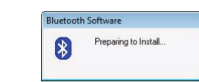


2. Please click **Yes** to continue installation.



9

3. Installation program will remind you to plug in the Bluetooth USB Adapter if you don't put it into your PC.



4. Click **Agree** and Install Bluetooth Software to continue, have



10

5. Please plug your Bluetooth adapter and then it will install.

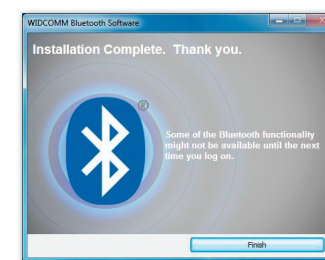


6. Welcome to install Bluetooth stack. It is recommended to restart your computer after setup is completed.



11

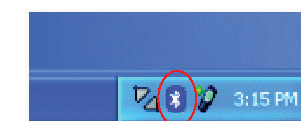
6. Installation Completed.



12

Initial Bluetooth™ Configuration Wizard - Windows XP

Initial Bluetooth™ Configuration Wizard
1. Now double click the Bluetooth™ icon in the system tray. This will start the "Initial Bluetooth™-Configuration Wizard."

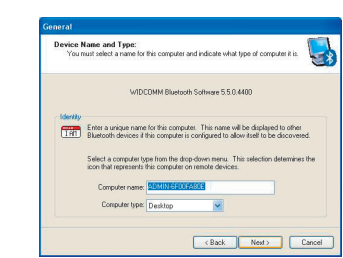


2. Once the Initial Bluetooth™ Configuration Wizard has started, click **Next**.

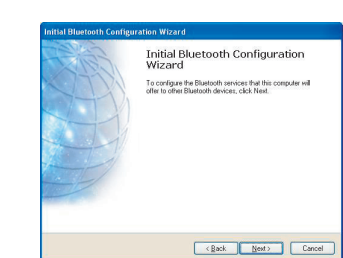


13

3. Next, enter a unique name for this computer. This name will be displayed to other Bluetooth™ devices. Select a computer type from the drop-down menu and click **Next**.

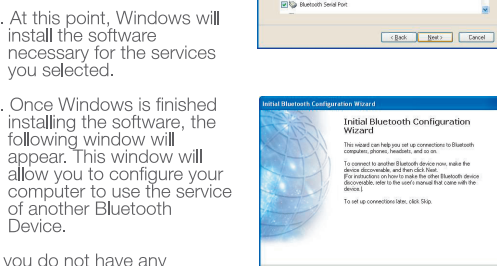


4. Click **Next** to configure the services this computer will offer to other Bluetooth™ devices.

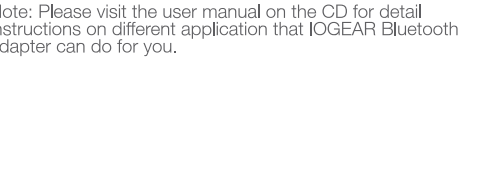


14

5. Choose the services that this computer will offer to other Bluetooth™ devices by placing a check in the box. To display the properties, click on the configure button. Click **Next** to proceed.



6. At this point, Windows will install the software necessary for the services you selected.

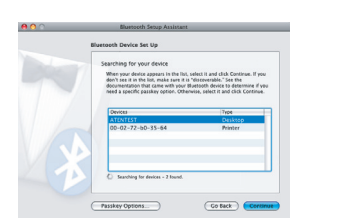


15

6. Your computer will search Bluetooth devices in your area and display them under the window below. Select the device you wish to communicate with and then click **Continue** to pair/connect to your device.



7. Please refer to the Apple website for further information on Apple Bluetooth support at www.apple.com.



19

Uninstall Drivers

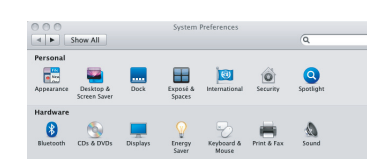
- Windows XP**
1. First, unplug the IOGEAR USB Bluetooth adapter from your computer
 2. Go to Control Panel (Start > Settings > Control Panel)
 3. Click on **Uninstall a program** under Programs or Click on **Add or Remove Programs**
 4. Click on **Widcomm Bluetooth Software** and click on [Remove]
 5. When the uninstall is complete, restart your computer

- Windows Vista / Windows 7**
1. First, unplug the IOGEAR USB Bluetooth adapter from your computer
 2. Go to Control Panel (Start > Control Panel)
 3. Click on **Uninstall a program** under Programs or Click on **Programs and Features** (Control Panel Classic View)
 4. Click on **Widcomm Bluetooth Software** and click on [Uninstall] on the top.
 5. When the uninstall is complete, restart your computer

16

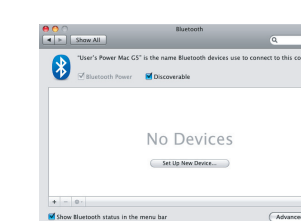
Installation - Mac OS X

- Installation - Mac OS X**
1. Use of the IOGEAR Bluetooth adapter requires Mac OS X v10.3.9 or later. There is no need to install any additional software, as Apple provides all required Bluetooth drivers.



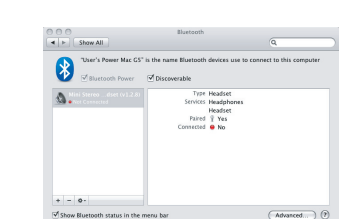
2. Simply plug in your Bluetooth adapter into an available USB port on your computer, and go to System Preferences.

2. Click on the Bluetooth icon and make sure the box next to Discoverable is checked (in 10.3 and 10.4 this will be on the Settings tab). To connect and pair with a Bluetooth device, click on **Set Up New Device** (in 10.3 and 10.4 this will be on the Devices tab).

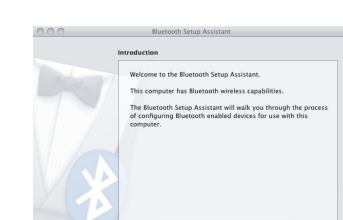


17

3. If you have already connected a device under 10.5 the Bluetooth window will look like this. Instead of clicking the Set Up New Device button, click the button with a plus (+) symbol below the device list.



4. This will initiate the Bluetooth Setup Assistant; click **Continue** to proceed.



18

Federal Communications Commission (FCC) Statement

15.21
You are cautioned that changes or modifications not expressly approved by the part responsible for compliance could void the user's authority to operate the equipment.

15.105(b)
This equipment has been tested and found to comply with the limits for a Class B digital device, pursuant to part 15 of the FCC rules. These limits are designed to provide reasonable protection against harmful interference in a residential installation. This equipment generates, uses and can radiate radio frequency energy and, if not installed and used in accordance with the instructions, may cause harmful interference to radio or television reception, which can be determined by turning the equipment off and on, the user is encouraged to try to correct the interference by one or more of the following measures:

- Reorient or relocate the receiving antenna.
- Increase the separation between the equipment and receiver.
- Connect the equipment into an outlet on a circuit different from that to which the receiver is connected.
- Consult the dealer or an experienced radio/TV technician for help.

Operation is subject to the following two conditions:
1) this device may not cause interference and
2) this device must accept any interference, including interference that may cause undesired operation of the device.

20

FCC RF Radiation Exposure Statement:

This equipment complies with FCC radiation exposure limits set forth for an uncontrolled environment. End users must follow the specific operating instructions for satisfying RF exposure compliance. This transmitter must not be co-located or operated in conjunction with any other antenna or transmitter.

CE Statement

This device has been tested and found to comply with the requirements set up in the council directive on the approximation of the law of member states relating to EMC Directive 89/336/EEC, Low Voltage Directive 73/23/EEC and R&TTE Directive 99/5/EC.

21