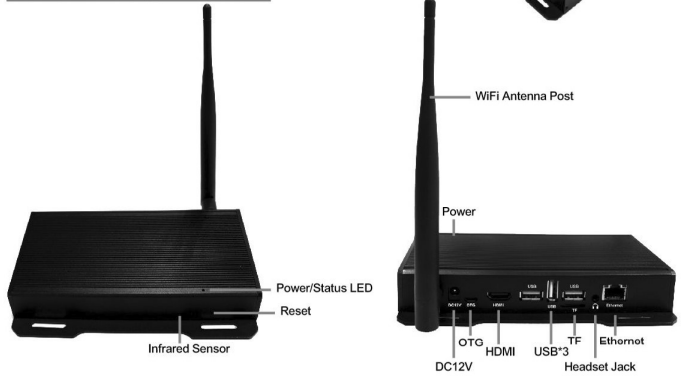


# Quick Installation Guide



Hardware appearance



Bottom appearance

Top appearance

## NCC Warning Statement

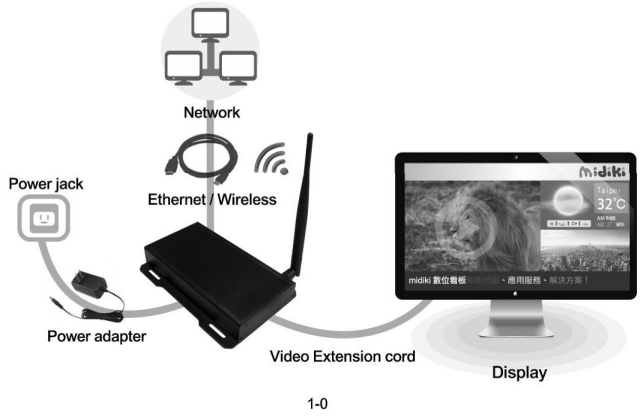
Article 12 Without permission, any company, firm or user shall not alter the frequency, increase the power, or change the characteristic and functions of the original design of the certified lower power frequency electric machinery.  
 Article 14 The application of lower power frequency electric machineries shall not affect the navigation safety nor interfere a legal communication, if an interference is found, the service will be suspended until improvement is made and the interference no longer exists.

**CAUTION**

- Keep away from humidity or water to prevent electric shock or circuitry damage.
- This product is tested to comply with NCC regulatory for low-power radio frequency devices.
- DO NOT disassemble the product in order to prevent hazardous or damage
- Input power is indicated in rating label on bottom.

## 1. Hardware Installation

Please refer to the following illustration for hardware installation (per Dia 1-0), and connect Digital Signage to power and HDMI port of display and get internet access.



1-0

## Hardware Installation Steps :

1. Connect digital signage with adapter and digital signage will power on automatically.
2. When connecting digital signage with display via HDMI cable, if your display supports Full HD/1080P, we recommend to set the HDMI output resolution to 1920x1080-60 (Full HD/1080P 60fps). (Please refer to 2.2.3 display resolution setting notes)
3. Set up WiFi or Ethernet network and get connected to internet (please refer to 2.2.4 network setting notes)

## 2. Software Installation

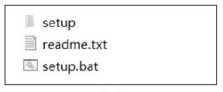
### 2.1 CMS Software Installation of Digital Signage

2.1.0 Please prepare one PC as the server for the digital signage

PC hardware and minimum OS requirement :

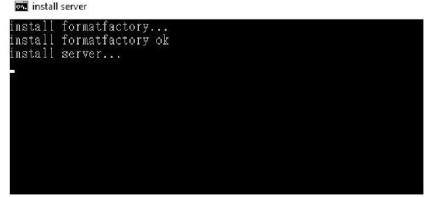
- CPU: Intel 1037u/1.8GHz or above Memory:2GB DDR3 or above Harddrive: 500 GB or above
  - Microsoft® Windows® XP 32-bit SP3 7/8/10 revision
- The URL for downloading CMS01 software to PC hard-disk :
- <http://www.aboway.com.tw/uploadfile/CMS01.rar>

2.1.1 After de-compressing "CMS01.rar" file, please open the folder "" . (Per Diagram 2-1 illustration)



2-1

2.1.2 Please execute "setup.bat" file, and follow step-by-step instructions to install Digital Signage software. First, be starting by installing "Format Factory" Software. (Per Diagram 2-2 illustration)



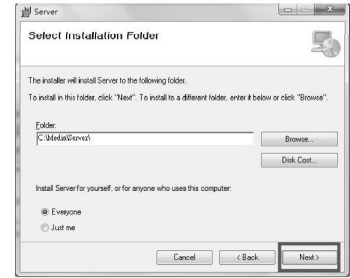
2-2

2.1.3 Followed by the installation of server software for Digital Signage. (Per Diagram 2-3 illustration)



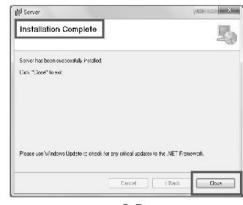
2-3

2.1.4 Select menu for software installation. (Per Diagram 2-4 illustration)



2-4

2.1.5 Please continue to follow instructions for software installation, until the prompt "Installation Complete" , and then click "Close" to exit installation. (Per Diagram 2-5 illustration)



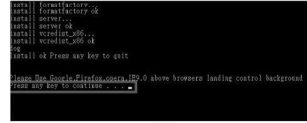
2-5

2.1.6 Followed by installation of "Vcredist\_x86" software, and if Diagram 2-6 illustration appears, it means the software has been previously installed.



2-6

2.1.7 When installing "Vcredist\_x86" software, if the prompt "Press Any Key to Continue" , it means the software has been successfully installed, therefore, please click the "cross" key on up-right corner. (Per Diagram 2-7 illustration)



2-7

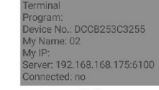
2.1.8 After installation of CMS01 software, the "Server" shortcut icon will appear on Desktop. So, please click shortcut icon to execute, and once the prompt of "Multimedia information publication system" appears in the bottom-right hand corner of Task Bar, it means that Digital Signage software has been successfully installed.



2-8

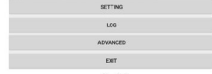
## 2.2 Digital Signage Power-On and Network Setting

2.2.1 Once Digital Signage is connected to power and display, the start-up procedure will take approximately one minute, and the system will automatically activate Digital Signage Software. (Per Diagram 2-9 illustration)



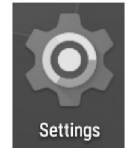
2-9

2.2.2 Software Operation Instruction : Digital Signage software can be operated via USB Mouse, and you can double click right key of mouse to exit Digital Signage software. If using touch-screen, setting can be done by lightly touching the screen. (Per Diagram 2-10 illustration)



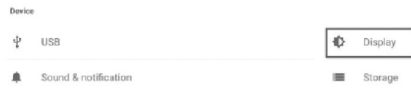
2-10

2.2.3 Setting for Display Output Resolution : Click "Setting" icon on the Desktop of Digital Signage. (Per Diagram 2-11 illustration)



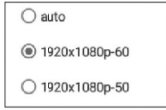
2-11

Click "Device" and then select "HDMI". (Per Diagram 2-12 illustration)



2-12

If display support output resolution of Full HD/1080P, then please select "HDMI Resolution", and then select "1920x1080p-60". (Per Diagram 2-13 illustration)



2-13

### 2.2.4 Network Setting :

Click "Setting" icon on the Desktop of Digital Signage. (Per Diagram 2-14 illustration)



2-14

If using wireless network, please select "Wireless and Network", and then select "Wi-Fi", while activating Wi-Fi to enter into "Setting" procedures. (Per Diagram 2-15, 2-16 illustration)



2-15



2-16

If using Ethernet network, please select "Ethernet", and then entering into "Setting" procedures. (Per Diagram 2-18 illustration)



2-17



2-18

## 2.3 Digital Signage System Log-in

**Note: Disable the Windows® firewall prior to log in CMS**

2.3.1 Please confirm the "server software of Digital Signage" is executing under background", by clicking the PC Taskbar in the bottom-right corner to confirm. (Per Diagram 2-19 illustration). Also confirm the server IP address by opening "Control Panel", "Network and Sharing Center", "LAN", and then "Details" to verify IPV4 address. (Per Diagram 2-20 illustration).



2-19



2-20

2.3.2 Execute browser (e.g. Windows IE or Google Chrome), and input : http://Server IP : 6101, (e.g. http://120.24.78.70 : 6101) to enter into the log-in page of Digital Signage system. Note: The default account and password for Digital Signage are both lower-case "admin". Select language before hitting log-in.

2.3.3 After successful log-in, per Diagram 2-22 illustration, the software home-page appears, and you may proceed to produce broadcast programs.

## 3. Setting for Digital Signage

### 3.1 Connection Setting for Digital Signage Terminal

3.1.1 Please switch on power of Digital Signage terminal and the display, per Diagram 3-1 illustration, shall appear.

Note: Please confirm Digital Signage being connected to internet.

```
Terminal
Program:
Device No.: DCCB253C3255
My Name: 02
My IP: 192.168.200.17
Server: 192.168.168.175:6100
Connected: no
```

3-1

3.1.2 Double click the right key of mouse, or "ESC" key, to exit from the window for Digital Signage Setting. (Per Diagram 3-2 illustration).



3-2

3.1.3 Having clicked "Setting", please input the Server IP address and define a name of the Digital Signage. (Per Diagram 3-3 illustration).



3-3

3.1.4 After successfully setting up, the status of the connection will read "Yes", in approximately 1 minute. (Per Diagram 3-4 illustration).

```
Terminal
Program:test
Device No.: DCCB253C3255
My Name: 02
My IP: 192.168.200.17
Server: 192.168.200.6:6100
Connected: yes
```

3-4

3.1.5 Subsequently, please log into the CMS01 server software of the Digital Signage, and then click the shortcut icon of "Terminal", and you should see a signage shown as on-line in green color. (Per Diagram 3-5 illustration).

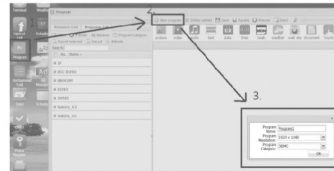


3-5

## 4. Program Production

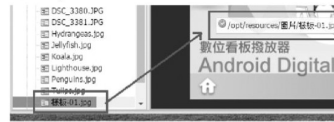
### 4.1 Information Broadcasting Program Production

4.1.1 Having successfully logged into the CMS01 server software of Digital Signage, please click the shortcut icon of "Program", choose "New Program", and then enter program, name in "Program Name", select resolution in "Program Resolution", select category in "Program Category", and finally click "OK". (Per Diagram 4-1 illustration).



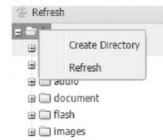
4-1

4.1.2 Please select a background picture, either select built-in or uploaded one, as program background. (Per Diagram 4-2 illustration).



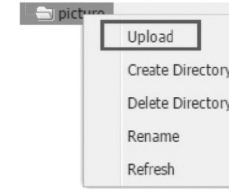
4-2

4.1.3 Subsequently, under the root-directory of "Resource list /", right-mouse-click to establish new folder "picture" (Per Diagram 4-3 illustration).

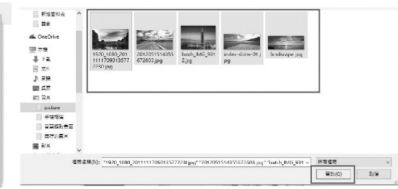


4-3

4.1.4 Within the "Pictures" folder, right-mouse-click and select "Upload", and upload the picture files as intended. (Per Diagram 4-4 illustration).



4-4



4-5

4.1.5 At present, a window of "Upload Listing" will appear, indicating status of files upload. (Per Diagram 4-6 illustration).

Upload Listing	Upload all not began to upload files	Stop Upload	Clear List	The queue file number
Filename	Upload To	Type	Filesize	Size Uploaded: Percent Upload: Average Speed: Current Speed: Time Elapsed: Time Remain: File Status
1: 1102_1100_201111170941357...	opt/resources/picture	.jpg	644.08 KB	644.08 KB 100.00 % 463.44 KB/s 199.79 KB/s 1:20 0 s 0 s Upload Succes
2: 2312151514355672603.jpg	opt/resources/picture	.jpg	4.20 MB	4.20 MB 100.00 % 219 MB/s 431.42 KB/s 2:00 0 s 0 s Upload Succes
3: batch8_IMG_9312.jpg	opt/resources/picture	.jpg	538.70 KB	538.70 KB 100.00 % 253.04 M 263.04 M 0 s 0 s Upload Succes

4-6

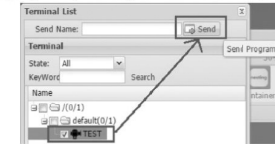
4.1.6 Click "Picture", "Video", "Weather" icons, and adjust to appropriate size of the broadcast window. Then you can drag to-be-uploaded picture or video files respectively to corresponding broadcast windows (Per Diagram 4-7, 4-8 illustrations).



4-7

4-8

4.1.7 Please save the broadcast program, before right-mouse-click the broadcast program file, and select "SEND" to send program. (Per Diagram 4-9 illustration).



4-9

4.1.8 Program playback as shown in Diagram 4-1 illustration, and whereas the composition edit of other broadcast programs, please follow instructions listed in Steps 4.1.3 ~ 4.1.7.



4-10

**Note** Please read the "midiki CMS01 User's Manual" for detail explanation and illustrations for other program editing and broadcast scheduling.

## Quanmax Inc

5F, NO.415, Ti-Ding Blvd Sec2, Neihu District, Taipei, Taiwan114

#### **FCC INFORMATION**

**This device complies with Part 15 of the FCC Rules. Operation is subject to the following two conditions:**

**1. This device may not cause harmful interference, and 2. This device must accept any interference received, including interference that may cause undesired operation.**

**Note: This equipment has been tested and found to comply with the limits for a Class B digital device, pursuant to part 15 of the FCC Rules. These limits are designed to provide reasonable protection against harmful interference in a residential installation. This equipment generates, uses and can radiate radio frequency energy and, if not installed and used in accordance with the instructions, may cause harmful interference to radio communications. However, there is no guarantee that interference will not occur in a particular installation. If this equipment does cause harmful interference to radio or television reception, which can be determined by turning the equipment off and on, the user is encouraged to try to correct the interference by one or more of the following measures:**

- Reorient or relocate the receiving antenna.**
- Increase the separation between the equipment and receiver.**
- Connect the equipment into an outlet on a circuit different from that to which the receiver is connected.**
- Consult the dealer or an experienced radio/TV technician for help.**

**Caution: Any changes or modifications not expressly approved by the party responsible for compliance could void the user's authority to operate this equipment.**

**RF Exposure: A distance of 20 cm shall be maintained between the antenna and users, and the transmitter may not be co-located with any other transmitter or antenna.**