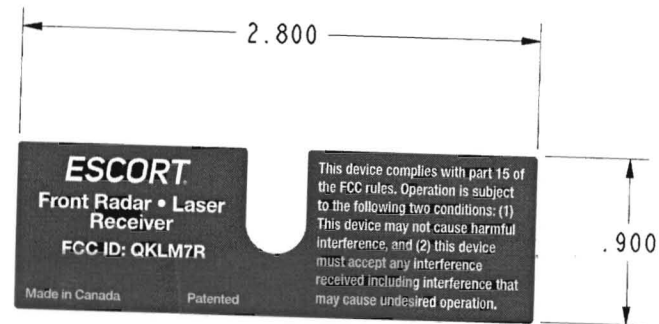
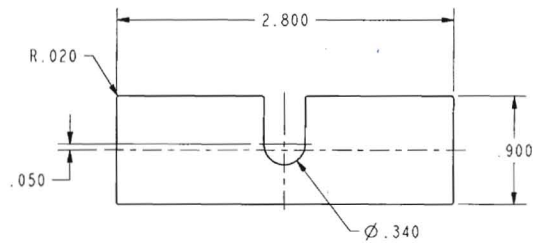


PART NUMBER	DESCRIPTION	ARTWORK
162038-01	LABEL, SERIAL NUMBER, MAX C1	AW-162038-X

PROPRIETARY NOTE: THE DESIGN AND DATA ON THIS DRAWING ARE ORIGINATED BY AND ARE THE EXCLUSIVE PROPERTY OF ESCORT INC. AND ARE TO BE HELD AND USED ON A CONFIDENTIAL BASIS. ALL WRITTEN MATERIAL AND OTHER DATA PERTAINING THERETO WILL BE RETURNED TO ESCORT ON REQUEST.

REV	ECN	DATE	DESCRIPTION	DJB
A	1160305	3/11/16	NEW RELEASE	



6. LABELS TO BE SUPPLIED IN ROLL FORM ON A 3" CORE AND ORIENTED AS SHOWN.
5. ARTWORK PER CHART
4. SERIAL NUMBER WITH BARCODE AND FCC INFO TO BE PRINTED IN HOUSE PER DRAWING 98-000030 OF ESCORT SERIALIZATION LOG
3. LABELS TO BE SUPPLIED IN ROLL FORM AND A 4" WIDE LINER
2. LABEL TO HAVE PERMINENT PRESSURE SENSITIVE ADHESIVE ON BACK SURFACE
1. MATERIAL: .003 THICK MYLAR (INCLUDING ADHESIVE)



B	QTY	ITEM	REF	ESCORT P/N	DESCRIPTION
TOLERANCE UNLESS OTHERWISE SPECIFIED XX ± .010 XXX ± .005 ANG ± 30°	ESCORT®				TITLE LABEL, SERIAL NUMBER MAX C1 RECEIVER
					SCALE DO NOT SCALE
DRN DATE REL DATE	DWG REV				
YZ 3/11/16	162038 A				
APP DATE SHEET OF					