



**mēa**

**WMC6300**

**Wireless Modem Card**

**User's Guide**

Version 1.0

**DRAFT**

## Foreword

This document describes in detail the confidential and proprietary technology of MeshNetworks' mēa™ Architecture. MeshNetworks products and technology are protected by US and international patent and patent pending technology. This document represents the current mēa design; the contents are subject to change at any time at the discretion of MeshNetworks, Inc.

mēa, MeshTray, and MeshNetworks' logo are trademarks or registered trademarks of MeshNetworks, Inc. Microsoft, Windows, Windows 2000 and Windows CE are registered trademarks of Microsoft Corporation. All other product names and services identified throughout this publication are trademarks or registered trademarks of their respective companies. No such uses or the use of any trade name is intended to convey endorsement or other affiliation with this publication. Copyright 2002, MeshNetworks, Inc. All Rights Reserved.



## Table of Contents

<b>mēa</b> .....	<b>1</b>
<b>Introduction</b> .....	<b>1</b>
<b>System Requirements</b> .....	<b>1</b>
General System Requirements .....	1
<b>What's in the Box</b> .....	<b>2</b>
<b>INSTALLING THE SOFTWARE</b> .....	<b>3</b>
Installing <b>mēa</b> Software (Windows 2000 Clients Only) .....	3
Configuring the DNS Address .....	8
Installing the Antenna Assembly on a Laptop Computer .....	9
Installing the Magnetic Antenna Assembly (Optional).....	11
Installing the WMC6300 Wireless Modem Card .....	12
Removing the WMC6300 Wireless Modem Card.....	13
Uninstalling Application Software (Windows 2000 Clients Only) .....	14
<b>OVERVIEW OF MESHNETWORKS' MESHTRAY</b> .....	<b>15</b>
<b>MeshTray™</b> .....	<b>15</b>
<b>MeshTray Status</b> .....	<b>16</b>
<b>Starting MeshTray</b> .....	<b>16</b>
<b>Terminating MeshTray</b> .....	<b>16</b>
<b>CUSTOMER SERVICE INFORMATION</b> .....	<b>17</b>
<b>LICENSE AND WARRANTY INFORMATION</b> .....	<b>18</b>
<b>Important Information</b> .....	<b>18</b>
<b>REGULATORY INFORMATION</b> .....	<b>21</b>
<b>FCC Information</b> .....	<b>21</b>
<b>FCC RF Radiation Exposure Statement</b> .....	<b>21</b>
<b>Safety Information for the <b>mēa</b> WMC6300</b> .....	<b>22</b>



## mea

### **Introduction**

Thank you for purchasing the **WMC6300** Wireless Modem Card. Please install the mea Application Software and Drivers before inserting the Wireless Modem Card in your system. To get started proceed to the *Installing the Software* section of this document.

mea is a wireless communication system capable of supporting high data rate mobile communication at vehicular speeds. The mea system is designed to allow standard client hosts with a PCMCIA interface to have a mobile broadband Ethernet connection. The mea system works transparently to the client host in a manner similar to an Ethernet connection. mea provides Internet Protocol based data and location services. Its geo-location accuracy and availability is better than  $\pm 10$  meters within 1 second. It is capable of supporting subscribers traveling up to 100 miles per hour.



**Figure 1. MeshLAN WMC6300 Wireless Modem Card**

The mea system provides a secure and reliable transport for the client host. The client host may still require configuration and authentication before it will be allowed to access services on the core network. Access to the core network is controlled by the network administrator according to current operating practice. This document provides detailed installation and configuration instructions for use when installing the mea WMC6300 Wireless Modem Card and its Software.

### **System Requirements**

#### **General System Requirements**

For best results, ensure the computers meet the following minimum requirements:

- Intel based Laptop or Notebook PC running the Microsoft Windows 2000 operating systems
- 5 MB of available hard disk storage
- Keyboard
- Mouse
- CD-ROM drive or DVD drive
- Available Type II PCMCIA card slot in the Host device

### *What's in the Box*

Each **mea** WMC6300 Wireless Modem Card is a full-featured wireless networking interface. The following is a list of the items provided with each WMC6300 card:

- **mea** WMC6300 Wireless Modem Card
- 2.4 GHz Antenna with a 12 inch cable and MMCX connector
- Antenna Clip with adhesive backing
- **mea** WMC6300 Software and Documentation CD



**Figure 2. What's in the Box**

The **mea** CD contains an on-line version of the **mea** WMC6300 User's Guide in Adobe PDF format. If required, the CD also contains an installation executable to load the Adobe Acrobat Reader software.

**Note:** For best results, the **mea** WMC6300 software should be installed before you insert the **mea** WMC6300 card into the device.

## Installing the Software

### Installing mea Software (Windows 2000 Clients Only)

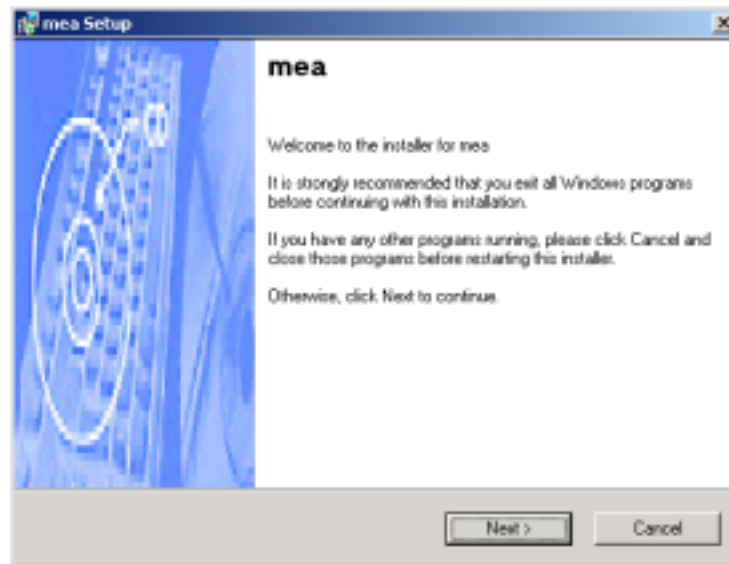
**Note:** Install the mea Software before installing the WMC6300 in your system.

Complete the following procedure to install the mea Software:

1. Insert the mea Software Installation CD into the computers' CDROM drive.
2. The mea Setup program will be displayed as shown in Figure 3.

**Note:** If the installation program does not start automatically, open the Windows **Start** menu, click on **Run**, and then type **d:setup.exe** (where **d** is the letter of the CD-ROM drive) and click the **"OK"** button.

3. Click the **"Next"** button to continue the installation process.



**Figure 3.** mea Installation Welcome Window

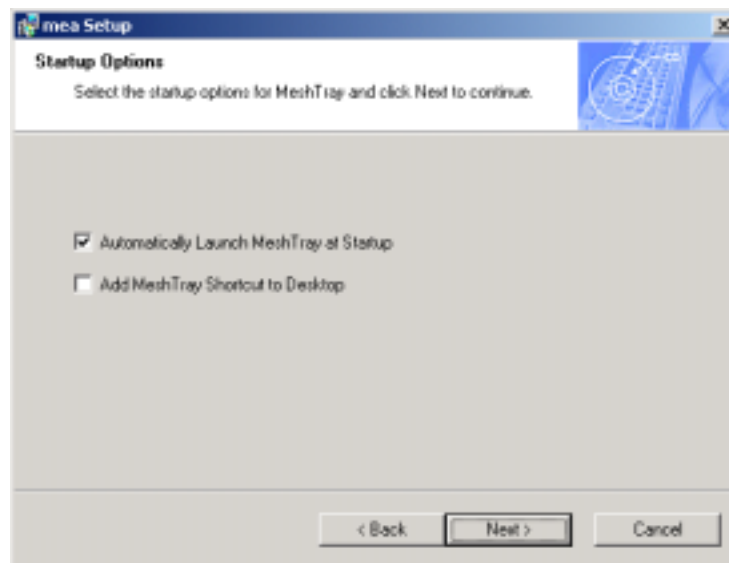


- The “License Agreement” window will be displayed. Please review the End User License Agreement. Use the scroll bar located at the right side of the window to display the complete text message.  
Note: If you do not agree with the terms of the license agreement, click on “**Cancel**” and the installation will be terminated.
- To continue with the installation process, click on the “**YES**” button as shown in Figure 4 and then click on “**Next**” to continue the installation.



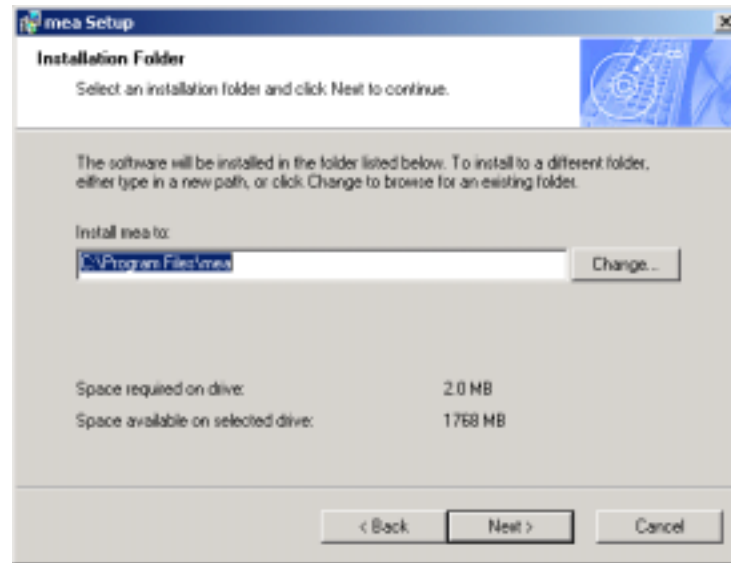
**Figure 4. Agree with License Agreement Window**

- The “Ready to Install” window will be displayed as shown in Figure 5. The user can modify the default installation configuration by checking or un-checking the boxes on this installation window. Click on “**Next**” to continue the installation process.



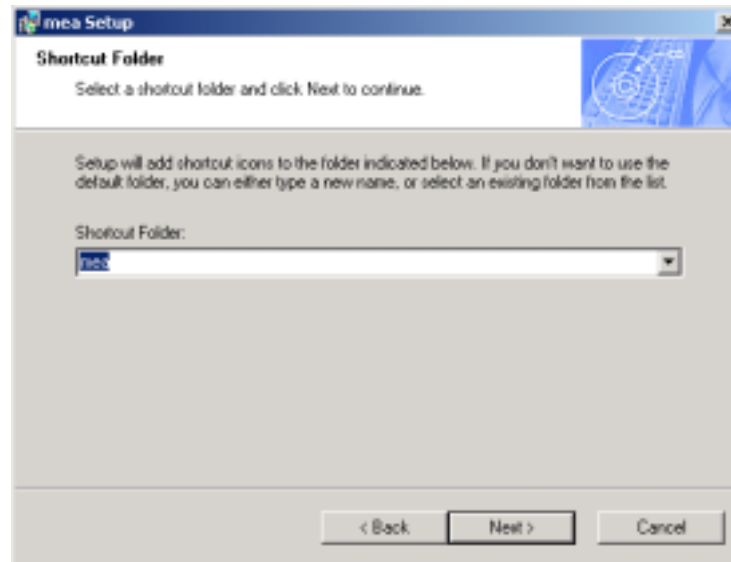
**Figure 5. Ready to Install Window**

- The mea setup program allows the user to change the default installation folder as shown in Figure 6. Click on **Next** to accept the location to install the software to and continue the installation process.



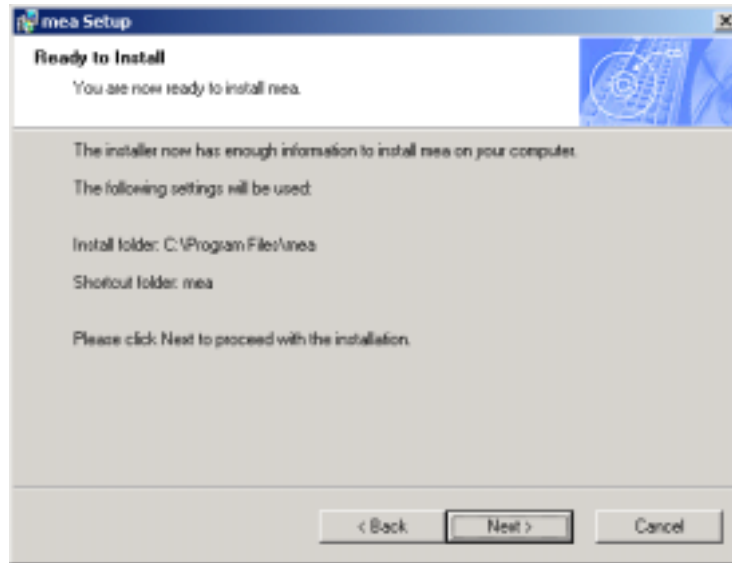
**Figure 6. Installation Folder Location**

- The mea setup program allows the user to change the default name (mea) of the Shortcut folder as shown in Figure 7. Click on **Next** to accept the name and continue the installation process.



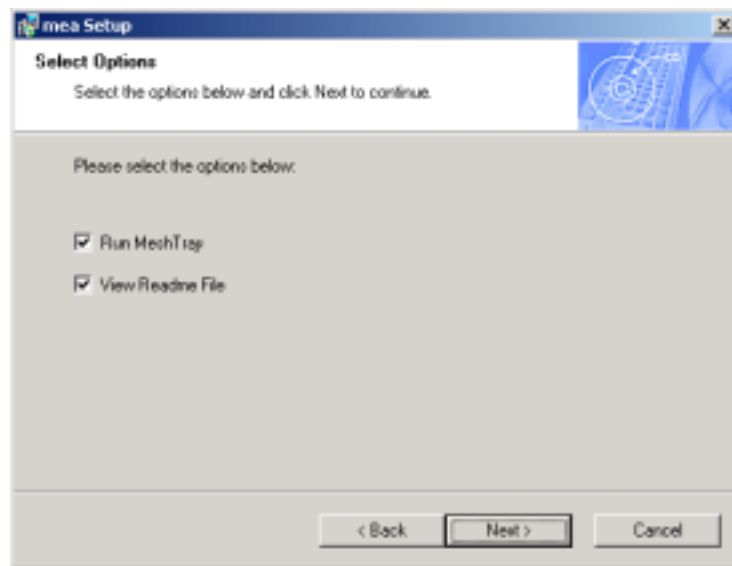
**Figure 7. Shortcut Name Selection**

- The “Ready to Install **mea** Window” will be displayed as shown in Figure 8. This window displays the Install Folder location and the Shortcut Folder name that will be used to install the **mea** software. Click on “**Next**” to proceed with the installation process.



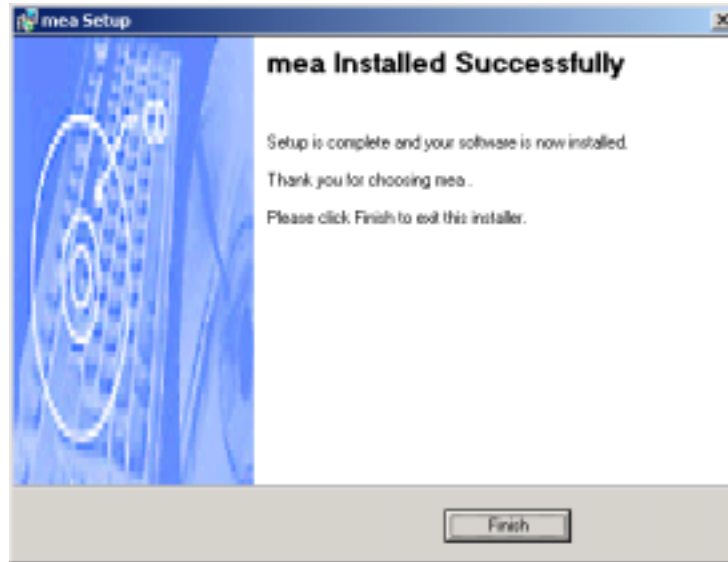
**Figure 8. Ready to Install **mea** Window**

- During the installation process, the “Performing Setup Actions” window displays a status bar that indicates the progress of the installation. When the file transfer is complete, a window will be displayed as shown in Figure 9 that allows the user to view the “ReadMe” file for late breaking release information. It also allows the user to immediately run MeshTray. Click on “**Next**” to proceed with the installation process.



**Figure 9. Select Options Window**

11. If selected, the “ReadMe” file will be displayed. Review the contents of the file and then close the dialog window by clicking on the “X” located in the upper-right corner of the window.
12. The “mea Installed Successfully” dialog window will appear as shown in Figure 10. Click on “**Finish**” to complete the installation process.



**Figure 10. Finished Popup Window**

### ***Configuring the DNS Address***

The Network Operator must supply the DNS IP address for an Internet connection. This address must be manually configured in order for web URLs such as [www.meshnetworks.com](http://www.meshnetworks.com) to be resolved. Complete the following procedure to configure the address:

1. Click on Start/Settings/Network and Dial-up Connections/Local Area Connection  
(choose the Local Area Connection Corresponding to the Wireless Modem Card)
2. Click on the "Properties" button.
3. Highlight "Internet Protocol (TCP/IP)" in the Components window.
4. Click on the "Properties" button.
5. Click on the "Advanced" button.
6. Click on the "DNS" tab
7. Click on the DNS "Add" button.
8. Enter the "DNS Server IP Address" provided by the network administrator and then click the "Add" button.
9. Click the "OK" button to close the Advanced TCP/IP Settings windows.
10. Click the "OK" button to close the Internet Protocol (TCP/IP) Properties windows.
11. Click the "OK" button to close the Local Area Connection Properties windows.
12. Click the "Close" button to close the Local Area Connection Status window.

This configuration should remain in the Windows 2000 host.

## Installing the Antenna Assembly on a Laptop Computer

Complete the following procedure to mount the Antenna Assembly on a standard laptop computer.

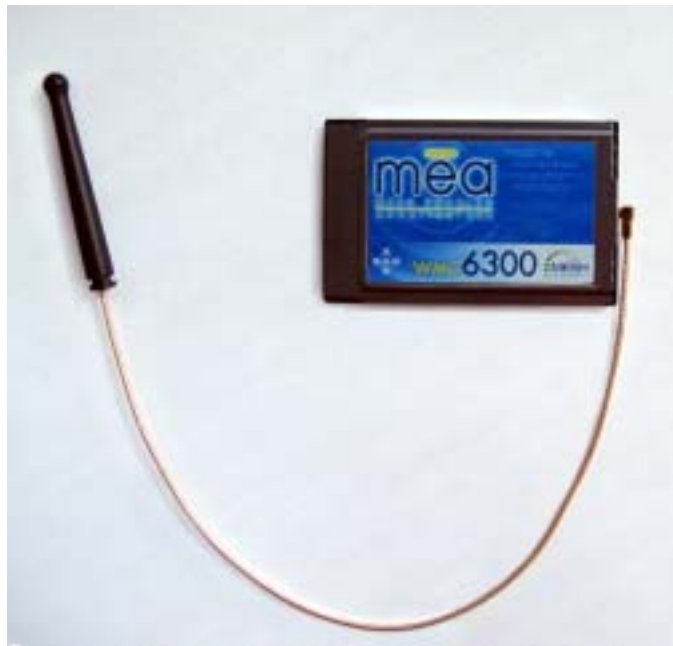
### Warning

**This unit is not FCC certified for use in a PDA.**

**Always eject card when not in use.**

1. Locate the Antenna and insert the connector into the WMC6300 antenna port as shown in Figure 11.

**Note:** The connector will “snap” into place when fully inserted.



**Figure 11. Attach Antenna to the WMC6300**

2. Locate the Antenna Clip shown in Figure 12 and remove paper that protects the adhesive backing.



**Figure 12. Antenna Clip**

3. Attach the Antenna Clip to the back of the laptop computer display approximately 1 inch from the top corner of the display as shown in Figure 13. Ensure that the location selected for the Antenna Clip will reach the WMC6300 with the provided cable length.

**Note:** The antenna operational position must be greater than 8 inches or 20 cm from the bottom of the case and such that the Antenna is vertically orientated when the laptop is in use.

**Warning**

**Use only the MeshNetworks supplied antenna.**

**Use of another antenna is prohibited and violates FCC regulations.**



**Figure 13. Mounting the Antenna Clip**

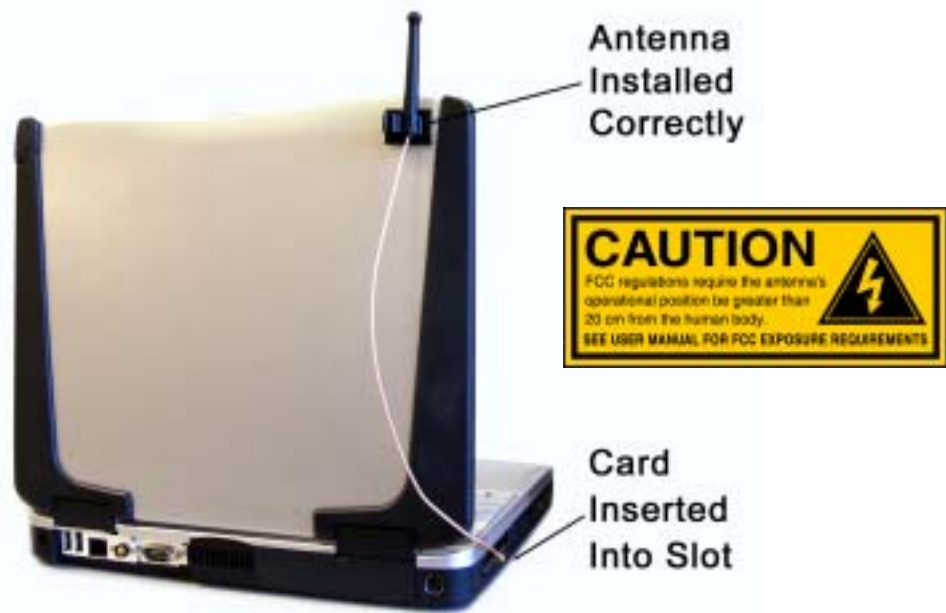
4. Insert the Antenna into the Antenna Clip as shown in Figure 14.

**Warning**

**Never use the WMC6300 with the Antenna removed from the Clip.**

**Never use the WMC6300 with the Antenna disconnected from the Card.**

**Never use the WMC6300 with the display in the closed position.**



**Figure 14. Insert the Antenna into the Clip**

### ***Installing the Magnetic Antenna Assembly (Optional)***

Complete the following procedure to mount the Magnetic Mount Antenna with a 12-foot cable assembly to the rooftop of an automobile.

1. Locate the Magnetic Antenna and route the 12-foot cable as required from the location of the Host Computer to the rooftop of the automobile. Ensure that the Antenna will reach the Host Computer with the provided cable length.
2. The base of the antenna contains a powerful magnet that will adequately secure the antenna to the rooftop. Attach the base of the Magnetic Mount Antenna to the rooftop of the automobile so that the antenna is in a vertical orientation.

#### **Warning**

**FCC regulations require that the antenna's operational position must be greater than 20 cm from the human body.**

**Never use the WMC6300 with the Antenna removed from the rooftop.**

**Never use the WMC6300 with the Antenna disconnected from the Card.**

3. Insert the Antenna's Cable Connector into the WMC6300 antenna port as shown in Figure 15. **Note:** The connector will "snap" into place when fully inserted.



**Figure 15. Attach Magnetic Mount Antenna to the WMC6300**



### ***Installing the WMC6300 Wireless Modem Card***

Complete the following procedure to install the WMC6300 Wireless Modem Card in the computer.

1. Locate an available Type II PCMCIA card slot in the computer. If necessary, remove the slot dust cover from the slot.
2. To ensure the correct orientation of the card is observed, insert the WMC6300 Wireless Modem Card into the computer's PCMCIA card slot with the label side up as shown in Figure 16.

**CAUTION - Never force the card into the slot.**

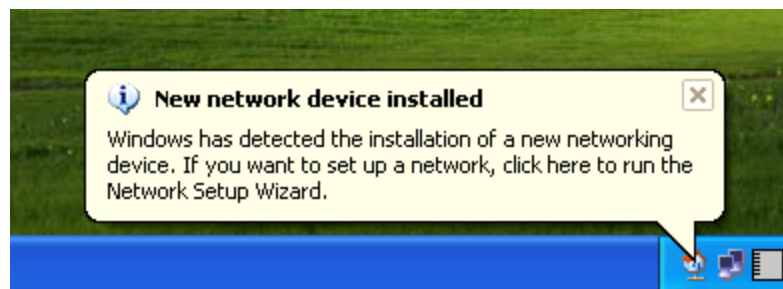


**Figure 16. Installing the WMC6300 Wireless Modem Card**

**Warning**

**This unit is not FCC certified for use in a PDA.**

3. The New Hardware Found Popup Window is displayed as shown in Figure 17 to indicate that the hardware is installed and ready for use.



**Figure 17. Found New hardware Popup**

## Removing the WMC6300 Wireless Modem Card

The WMC6300 should be ejected using the following procedure to ensure that power to the card is disabled prior to removal.

### Warning

**Always eject card when not in use.**

1. Click on the Unplug or Eject Hardware icon in the system task bar
2. Select "Stop MeshNetworks PC Card Parent"
3. Click on the Eject button
4. Wait for a message which indicates that the device may be safely removed from the system
5. Remove the WMC6300 from the PCMCIA slot as shown in Figure 18.

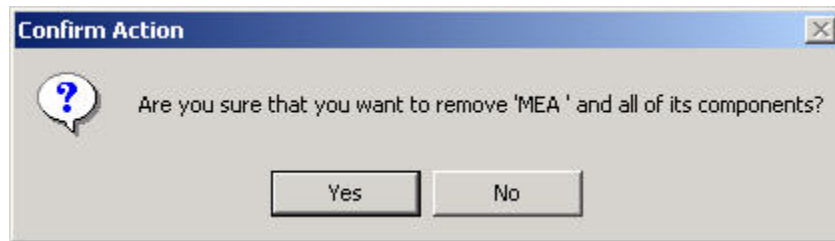


Figure 18. Removing the WMC6300 from the PCMCIA slot

### **Uninstalling Application Software (Windows 2000 Clients Only)**

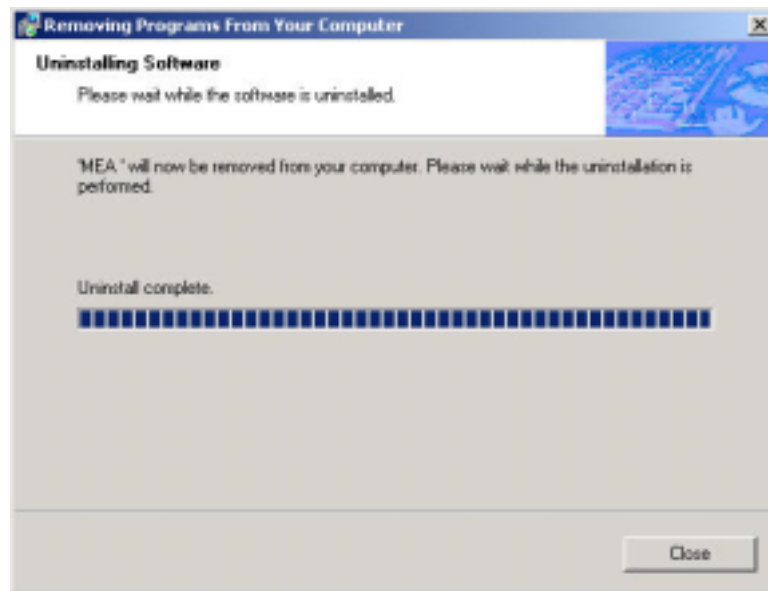
Complete the following procedure to “Uninstall” the MEA Ad Hoc Routing Software:

1. From the Start menu, select **Program Files** → **MEA** → **Uninstall MEA**.  
**Note:** The MEA software can also be uninstalled using “Add/Remove Programs” located in the Control Panel.
2. The Uninstall program will ask, “Are you sure you want to remove MeshNetworks Software...” as shown in Figure 19. Click on “**Yes**” to continue.



**Figure 19. Confirm Uninstall**

3. The “Removing Programs From Your Computer” window will be displayed while the MEA software is uninstalled as shown in Figure 20. When the Uninstalling Software Process is complete, click on the “**Close**” button.



**Figure 20. Removing Programs From Your Computer Window**

## Overview of MeshNetworks' MeshTray

### MeshTray™

MeshTray is a status application that reports vital and statistical information about the mēa card. Because MeshTray is a “tray” application, it stays in the system status tray area when minimized as shown in Figure 21 and Figure 22.



**Inactive MeshTray Icon**

**Figure 21. Inactive MeshTray Icon**

As shown in Figure 22, the MeshTray icon displays the Link Strength to the associated IAP as color-coded bars. (More bars indicate greater Link Quality.)



**MeshTray Icon**

**Figure 22. MeshTray Link Strength Indicator**

By clicking on the MeshTray icon, the application is restored to a property sheet interface as shown in Figure 23.

### ***MeshTray Status***

When the utility is launched, MeshTray displays useful system information such as a description of the device, the MAC address of the node, the IP address of the currently associated IAP, and the type of device (i.e., Subscriber Device, Wireless Router or IAP). The Driver and Firmware version and the IAP Address are also displayed.



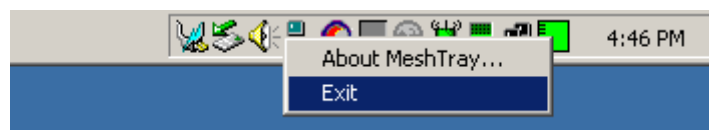
**Figure 23. MeshTray Status Page**

### ***Starting MeshTray***

During the software installation process, a MeshTray shortcut icon is installed on the users' desktop. To start the MeshTray application, double-click on the MeshTray icon.

### ***Terminating MeshTray***

If desired, the MeshTray application may be terminated by positioning the cursor over the MeshTray icon that is located in the Toolbar. Then, right-click on the MeshTray icon and select "Exit" as shown in Figure 24. The task is terminated and the icon is removed until the application is started again from the Start menu.



**Figure 24. Exit MeshTray**

## Customer Service Information

For information about solving difficulties in setting up your mea WMC6300, please see the Frequently Asked Questions in the support page at <http://www.meshnetworks.com/>.

If you have read this document, reviewed the FAQ, and made every effort to resolve installation or operation issues yourself and still require help, please contact your mea WMC6300 supplier for assistance.

## License and Warranty Information

### Important Information

PLEASE READ CAREFULLY THE FOLLOWING BEFORE INSTALLING OR USING THIS HARDWARE, CONSISTING OF A CD ROM AND PCMCIA CARD, AND THE SOFTWARE (COLLECTIVELY, THE "PRODUCT"). IF YOU AGREE WITH ALL OF THE TERMS OF THIS LICENSE AGREEMENT & LIMITED WARRANTY, PROCEED WITH THE INSTALLATION AND USE OF THE PRODUCT FOLLOWING THE ONSCREEN INSTRUCTIONS. IF YOU DO NOT AGREE, DO NOT INSTALL OR USE THE PRODUCT. BY INSTALLING OR USING THE PRODUCT, YOU ARE AGREEING TO BE BOUND BY ALL OF THE TERMS OF THIS LICENSE AGREEMENT & LIMITED WARRANTY. IF YOU DO NOT AGREE TO THE TERMS OF THIS LICENSE AGREEMENT & LIMITED WARRANTY, PROMPTLY RETURN THE UNUSED PRODUCT AND DOCUMENTATION TO THE SOURCE (AS DEFINED BELOW) FOR A FULL REFUND OF THE PURCHASE PRICE.

### License Agreement & Limited Warranty

#### LICENSE GRANT

MeshNetworks, Inc. ("MeshNetworks"), by and through its resellers and suppliers (collectively, the "Source") hereby licenses to the end-user ("You") the software accompanying this Product ("Software"). You have right of possession to the CD ROM on which the Software is recorded (in accordance with your arrangement with the Source), but MeshNetworks retains title to the Software and related documentation. The license is non-exclusive, non-transferable, non-sublicensable and confers a right to use only the machine-readable, object code form of the Software for its normal and intended purpose by a single-user. You may make one backup copy of the Software in machine-readable form, provided the backup copy is not installed or used on any electronic device. You must reproduce on the backup copy the MeshNetworks' copyright notice and any other proprietary legends that were on the original copy of the Software.

#### RESTRICTIONS

You acknowledge that the Product contains copyrighted material, trade secrets and other proprietary material owned by MeshNetworks, and that unauthorized use of such material may cause serious loss or damage to MeshNetworks. You agree that You will not:

- decompile, reverse engineer, disassemble, translate or reduce the Product to a human-perceivable form.
- modify, adapt, pledge, lease, rent, share, lend, distribute, disclose or create derivative works based upon the Product in whole or in part.
- electronically transmit the Software from one computer to another or over a network.
- transfer any of your rights in the Software, the backup copy of the Software, the media, the documentation, or this License Agreement & Limited Warranty to another party.
- use the Product for any unlawful or harmful purpose.

#### TERM, TERMINATION

This license is effective until terminated. You may terminate this license at any time by destroying the Software, related documentation and all copies thereof. This license will terminate immediately without notice from MeshNetworks if You fail to comply with any provision of this License Agreement & Limited Warranty. Upon termination You must destroy the Software, related documentation and all copies thereof.

**HARDWARE WARRANTY**

MeshNetworks warrants to You that the hardware elements of the Product will be substantially free from material defects in workmanship and materials, under normal use and service, for a period of one (1) year from the date of acquisition from the Source.

Our sole obligation under this express warranty will be, at our option and expense, (1) to repair the defective hardware element or, (2) deliver to You an equivalent hardware element to replace the defective item. Any hardware element that is replaced will become our property. Replacement hardware elements may be new or reconditioned. We warrant any replaced or repaired hardware elements for the greater of ninety (90) days from shipment, or the remainder of the initial warranty period.

**SOFTWARE WARRANTY**

MeshNetworks warrants to You that the Software, except as noted below, will perform in substantial conformance to its published program specifications, for a period of ninety (90) days from the date of acquisition from the Source. No updates are provided under this warranty. Our sole obligation under this express warranty will be, at our option and expense, to replace any defective software product, with software which substantially conforms to applicable MeshNetworks' published program specifications.

You assume responsibility for the selection of the appropriate applications program and associated reference materials. MeshNetworks makes no warranty or representation that the Software will meet your requirements or work in combination with any hardware or applications software products provided by third parties, that the operation of the Software will be uninterrupted or error free, or that all defects in the Software will be corrected.

**WARRANTY SERVICE**

You must contact the Source of the Product within the applicable warranty period to obtain warranty service authorization. Dated proof of purchase may be required. A Return Material Authorization (RMA) number will be issued. This number must be marked on the outside of the package. The Product must be packaged appropriately for safe shipment and sent prepaid. It is recommended that returned Products be insured or sent by a method that provides for tracking of the package. Responsibility for loss or damage does not transfer to the intended recipient until the returned item is received by such party. We will make commercially reasonable efforts to ship the repaired or replaced item to You, at our expense, not later than ten (10) business days after receipt of the defective Product. We will retain risk of loss or damage until the Product is delivered to You.

We will not be responsible for any software, firmware, information, or memory data belonging to You contained in, stored on, or integrated with any Products returned to the Source for repair, whether under warranty or not.

**WARRANTIES EXCLUSIVE, WARRANTY DISCLAIMER**

TO THE FULL EXTENT ALLOWED BY LAW, THE FOREGOING WARRANTIES AND REMEDIES ARE EXCLUSIVE AND ARE IN LIEU OF ALL OTHER WARRANTIES, TERMS, OR CONDITIONS, EXPRESS OR IMPLIED, EITHER IN FACT OR BY OPERATION OF LAW, STATUTORY OR OTHERWISE, INCLUDING, WITHOUT LIMITATION, WARRANTIES OF MERCHANTABILITY, FITNESS FOR A PARTICULAR PURPOSE, SATISFACTORY QUALITY, CORRESPONDENCE WITH DESCRIPTION, INFORMATIONAL CONTENT, ACCURACY, SYSTEM INTEGRATION, NON-INFRINGEMENT AND QUIET ENJOYMENT, ALL OF WHICH ARE EXPRESSLY DISCLAIMED. WE DO NOT WARRANT THAT THE FUNCTIONS CONTAINED IN THE PRODUCT WILL MEET YOUR REQUIREMENTS, THAT THE PRODUCT WILL BE COMPATIBLE WITH ANY OTHER SOFTWARE, HARDWARE OR OPERATING SYSTEM, THAT THE OPERATION OF THE PRODUCT WILL BE UNINTERRUPTED OR



## **MeshNetworks**

---

ERROR-FREE. WE NEITHER ASSUME NOR AUTHORIZE ANY OTHER PERSON TO ASSUME FOR IT ANY OTHER LIABILITY IN CONNECTION WITH THE SALE, INSTALLATION, MAINTENANCE OR USE OF THIS PRODUCT.

WE WILL NOT BE LIABLE UNDER THIS WARRANTY IF TESTING AND EXAMINATION DISCLOSE THAT THE ALLEGED DEFECT OR MALFUNCTION IN THE PRODUCT DOES NOT EXIST OR WAS CAUSED BY MISUSE, NEGLIGENCE, IMPROPER INSTALLATION OR TESTING, UNAUTHORIZED ATTEMPTS TO OPEN, REPAIR OR MODIFY THE PRODUCT, OR ANY OTHER CAUSE BEYOND THE RANGE OF THE INTENDED USE, OR BY ACCIDENT, FIRE, LIGHTNING, OTHER HAZARDS.

### **LIMITATION OF LIABILITY**

TO THE FULL EXTENT ALLOWED BY LAW, MESHNETWORKS EXCLUDES FOR ITSELF, ITS RESELLERS AND SUPPLIERS AND THEIR RESPECTIVE DIRECTORS, OFFICERS, EMPLOYEES, OR AGENTS, ANY LIABILITY, WHETHER BASED IN CONTRACT OR TORT (INCLUDING NEGLIGENCE), FOR INCIDENTAL, CONSEQUENTIAL, INDIRECT, SPECIAL, OR PUNITIVE DAMAGES OF ANY KIND, OR FOR LOSS OF REVENUE OR PROFITS, LOSS OF BUSINESS, LOSS OF INFORMATION OR DATA, OR OTHER FINANCIAL LOSS ARISING OUT OF OR IN CONNECTION WITH THE SALE, INSTALLATION, MAINTENANCE, USE, PERFORMANCE, FAILURE, OR INTERRUPTION OF ITS PRODUCTS, EVEN IF WE HAVE BEEN ADVISED OF THE POSSIBILITY OF SUCH DAMAGES, AND LIMITS ITS LIABILITY TO REPAIR OR REPLACEMENT. AT OUR OPTION THIS DISCLAIMER OF LIABILITY FOR DAMAGES WILL NOT BE AFFECTED IF ANY REMEDY PROVIDED HEREIN WILL FAIL OF ITS ESSENTIAL PURPOSE.

Some jurisdictions do not allow the exclusion or limitation of implied warranties or the limitation of incidental or consequential damages for certain products supplied to consumers, or the limitation of liability for death or personal injury, so the above limitations and exclusions may be limited in their application to You. When the implied warranties are not allowed to be excluded in their entirety, they will be limited to the duration of the applicable written warranty. This warranty gives You specific legal rights which may vary depending on local law.

### **EXPORT COMPLIANCE**

You agree and certify that the Product will be utilized only in the United States of America or in compliance with 22CFR125.4(b)(9).

### **GOVERNING LAW**

This License Agreement & Limited Warranty will be governed by the laws of the state of Florida, U.S.A., and by the laws of the United States, excluding their conflicts of laws principles. Both the Uniform Computer Information Transactions Act and the United Nations Convention on Contracts for the International Sale of Goods are hereby excluded in their entirety from application to this License Agreement & Limited Warranty.

## Regulatory Information

### FCC Information

This device complies with Part 15 of the FCC Rules. Operation is subject to the following two conditions: (1) this device may not cause harmful interference, and (2) this device must accept any interference received; including interference that may cause undesired operation.

Federal Communications Commission (FCC) Statement:

This Equipment has been tested and found to comply with the limits for a Class A digital device, pursuant to Part 15 of the FCC rules. These limits are designed to provide reasonable protection against harmful interference in a commercial installation. This equipment generates, uses and can radiate radio frequency energy and, if not installed and used in accordance with the instructions, may cause harmful interference to radio communications. However, there is no guarantee that interference will not occur in a particular installation. If this equipment does cause harmful interference to radio or television reception, which can be determined by turning the equipment off and on, the user is encouraged to try to correct the interference by one or more of the following measures:

- Reorient or relocate the receiving antenna.
- Increase the separation between the WMC6300 and radio or television receiver.
- Connect the equipment into an outlet on a circuit different from that to which the receiver is connected.
- Consult the supplier of the WMC6300 or an experienced radio/TV technician for help.

### FCC RF Radiation Exposure Statement

1. **CAUTION:** This equipment complies with FCC RF radiation exposure limits set forth for an uncontrolled environment. This equipment should be installed and operated with a minimum distance of 20 cm between the antenna and your body.
2. This Transmitter must not be co-located or operating in conjunction with any other antenna or transmitter.

### Safety Information for the mēa WMC6300

The Federal Communications Commission (FCC) with its action in ET Docket 96-8 has adopted a safety standard for human exposure to radio frequency (RF) electromagnetic energy emitted by FCC certified equipment. MeshNetworks' mēa products meet the uncontrolled environmental limits found in OET-65 and ANSI C95.1, 1991. Proper operation of this radio according to the instructions found in this manual and the hardware and software guides on the mēa CD will result in user exposure that is substantially below the FCC recommended limits.

- Do not touch or move the antenna(s) while the unit is transmitting or receiving.
- Do not hold any component containing a radio such that the antenna is very close to or touching any exposed parts of the body, especially the face or eyes, while transmitting.
- Do not operate a portable transmitter near unshielded blasting caps or in an explosive environment unless it is a type especially qualified for such use.
- Do not operate the radio or attempt to transmit data unless the antenna is connected; otherwise, the radio may be damaged.
- Antenna use:
  - In order to comply with FCC RF exposure limits, dipole antennas should be located at a minimum distance of 7.9 inches (20 cm) or more from the body of all persons.

#### **WARNING**

Use the antenna supplied by MeshNetworks.

Use of other antennas is prohibited may violate FCC regulations.

**NOTE:** The manufacturer is not responsible for any unauthorized modifications to this equipment. Such modifications could void the user's authority.