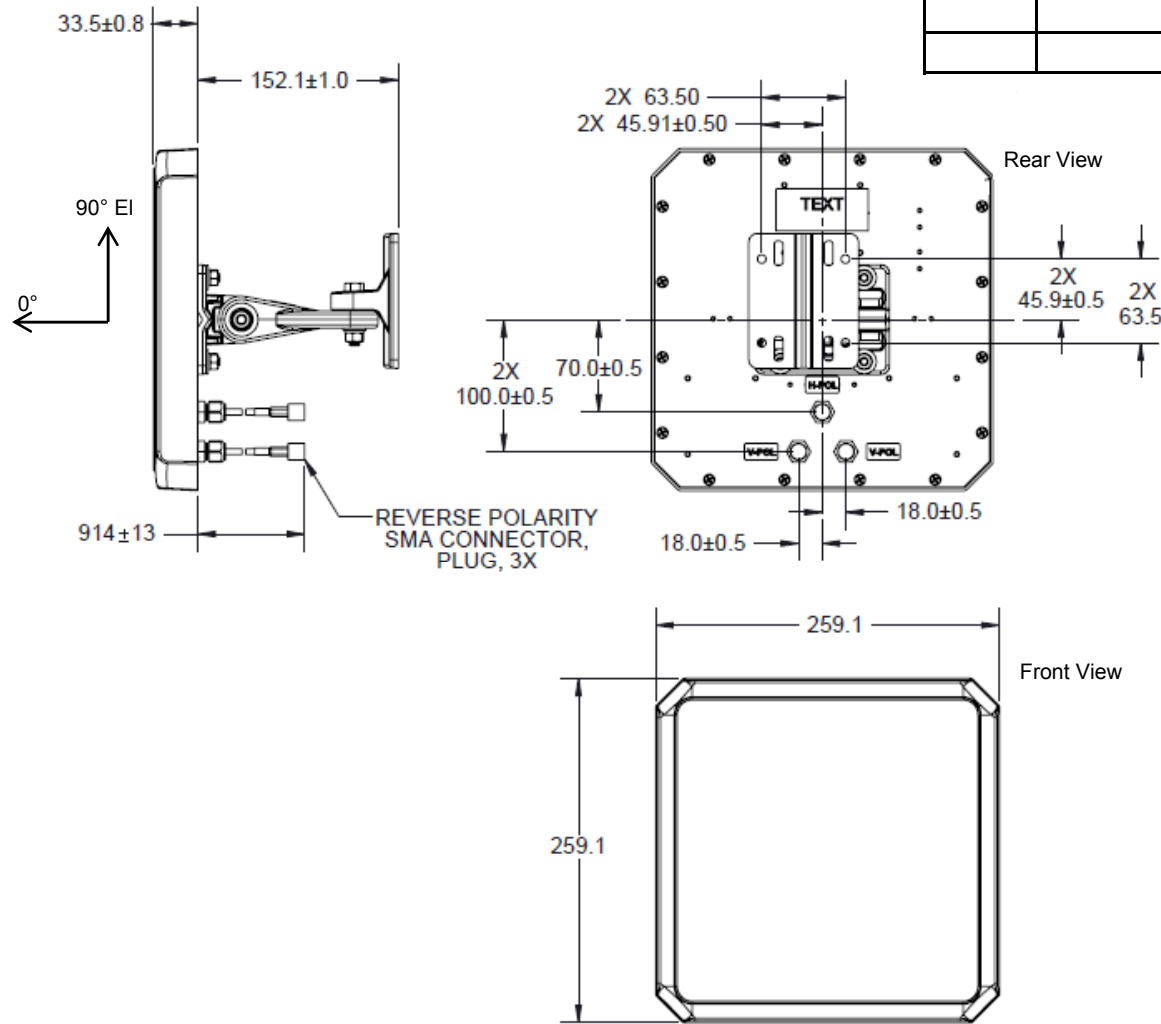


REVISIONS


REV	DESCRIPTION	DATE	APPROVED
A	Initial Release	6/6/12	TPC



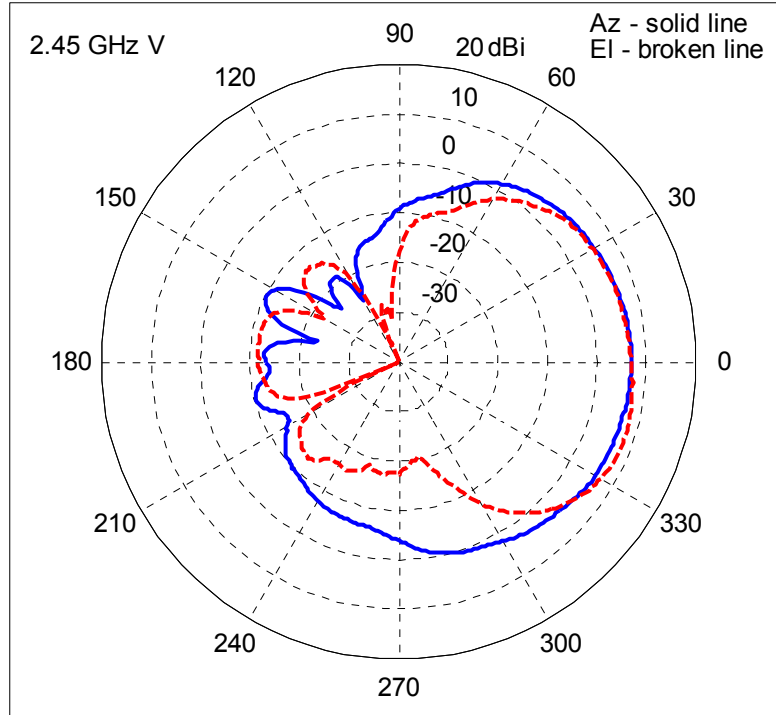
ANTENNA CHARACTERISTICS		
PARAMETERS	PERFORMANCE	
Motorola P/N	ML-2452-PNL9M3-036	
Vendor P/N	S24517PTS36RSM	
Antenna type	3-Port Dual-Band Dir Panel (2 Vrt and 1 Hor ports)	
Connector Type	RP-SMA Male x 3	
Cable Type	TBD	
Cable P/N	N/A (non-removeable)	
Cable Length (cm)	91.4 +/- 1.3	
Plenum Rated (Cable)	Yes	
Frequency (MHz)	2400-2500	5150-5875
Max/Typ Gain (dBi)	11.0 / 8.5	10.7 / 8.0
Azimuth beam width (deg)	75 (typ)	55 (typ)
Elevation beam width (deg)	70 (typ)	60 (typ)
VSWR max	2.0	2.0
Polarization	2xVrt/1xHor	2xVrt/1xHor
Max Power (Watts)	1	1
Weight (lbs)	1.8	
Storage Temp Range (C)	-40 / +70	
Operation Temp Range (C)	-30 / +65	
Outdoor Rated	Yes	

Notes:

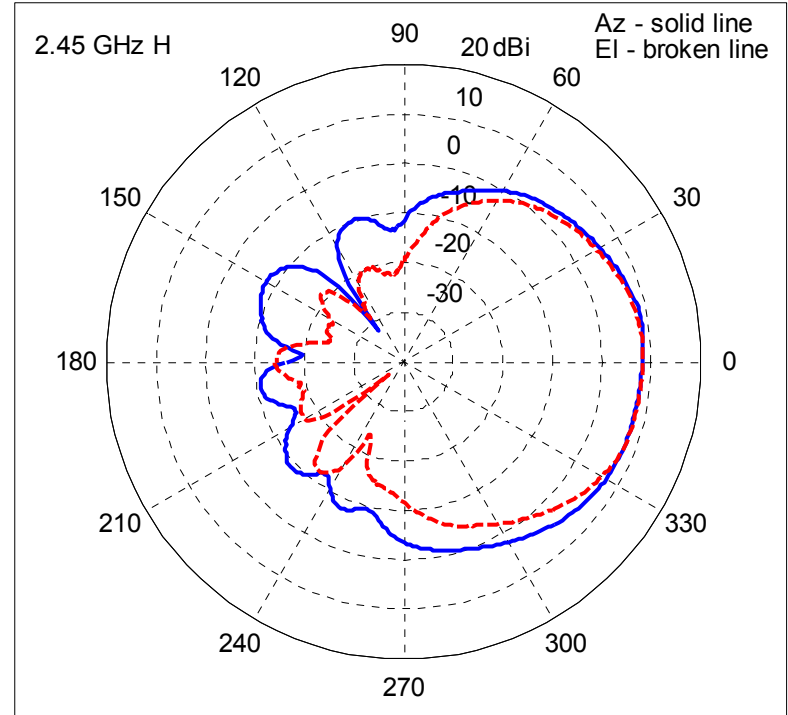
1. Part to be packaged in accordance with STI specification 50-04100-013 unless otherwise specified.
2. Part must comply with STI specification SP-12509-01 (RoHS) and have manufacturer's Declaration of Conformity on file.

 MOTOROLA SOLUTIONS		
ANT: 11ABGN, 3-Port Dir Panel, 11.0/10.7 dBi, LP, CBL 36, RP-SMA-M		
DOC NO: ML-2452-PNL9M3-036	SHEET: 1 OF 3	REV: A

Model: ML-2452-PNL9M3-036 Cut: Az/EI Pol: Vertical



Model: ML-2452-PNL9M3-036 Cut: Az/EI Pol: Horizontal



Notes:

- Gains shown are typical.



MOTOROLA SOLUTIONS

ANT: 11ABGN, 3-Port Dir Panel, 11.0/10.7 dBi, LP, CBL 36, RP-SMA-M

DOC NO:

ML-2452-PNL9M3-036

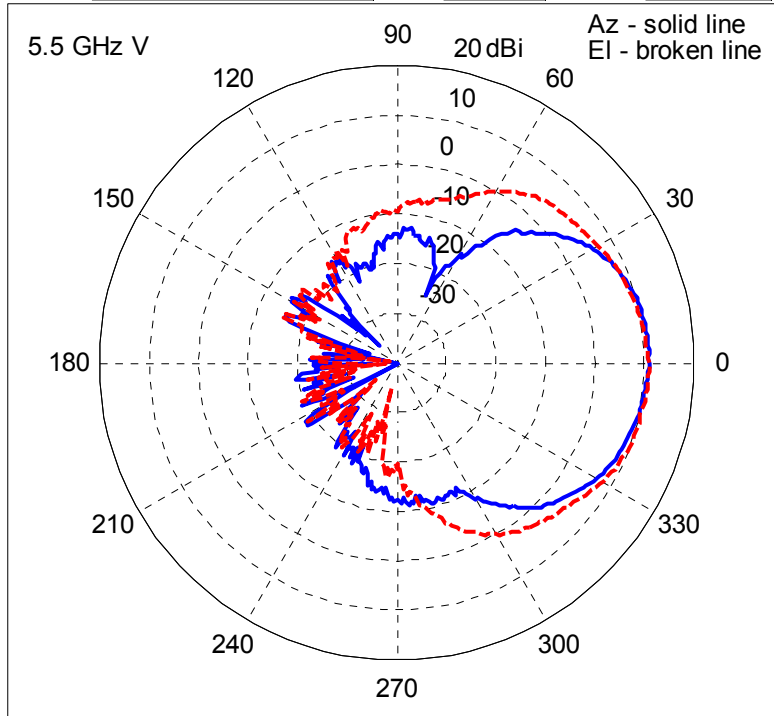
SHEET:

2 OF 3

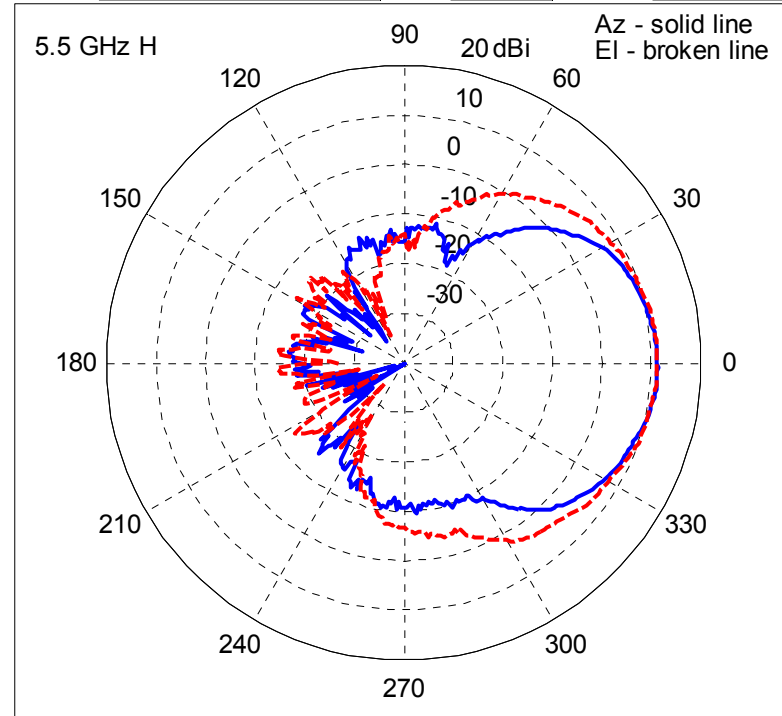
REV:

A


Model: ML-2452-PNL9M3-036 Cut: Az/EI Pol: Vertical



Model: ML-2452-PNL9M3-036 Cut: Az/EI Pol: Horizontal



Notes:
1. Gains shown are typical.

 MOTOROLA SOLUTIONS		
ANT: 11ABGN, 3-Port Dir Panel, 11.0/10.7 dBi, LP, CBL 36, RP-SMA-M		
DOC NO: ML-2452-PNL9M3-036	SHEET: 3 OF 3	REV: A