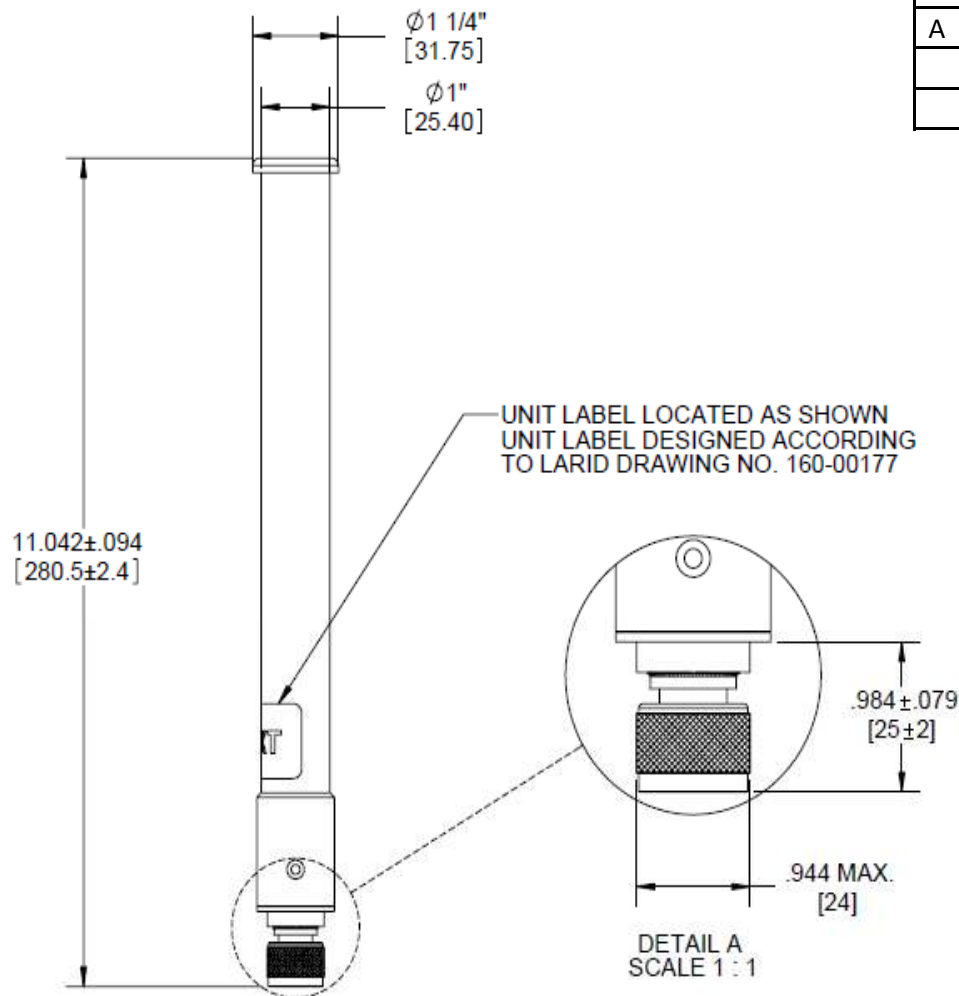


**REVISIONS**

| REV | DESCRIPTION     | DATE     | APPROVED |
|-----|-----------------|----------|----------|
| A   | Initial Release | 10/22/11 | TPC      |
|     |                 |          |          |
|     |                 |          |          |




**ANTENNA CHARACTERISTICS**

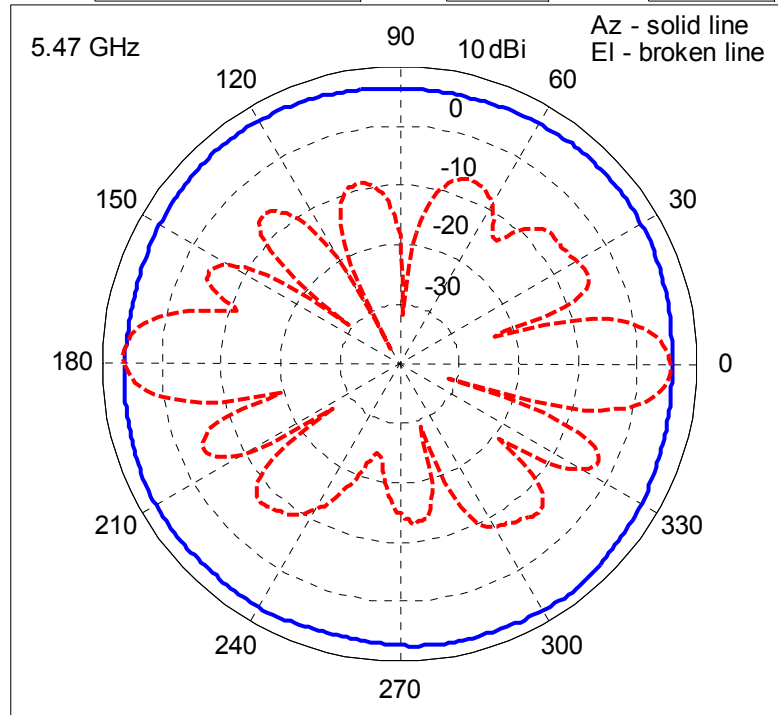
| PARAMETERS                 | PERFORMANCE       |
|----------------------------|-------------------|
| Motorola P/N               | ML-5299-FHPA6-01R |
| Vendor P/N                 | S5156WBSFN-MT1    |
| Antenna type               | Omni-Directional  |
| Connector Type             | N male            |
| Cable Type                 | N/A               |
| Cable P/N                  | N/A               |
| Cable Length (cm)          | N/A               |
| Plenum Rated               | No                |
| Frequency (MHz)            | 5150 – 5875       |
| Max/Typ Gain (dBi)         | 8.25 / 7.5        |
| Azimuth beam width (deg)   | Omni-Directional  |
| Elevation beam width (deg) | 16 (typ)          |
| VSWR max                   | 2.0               |
| Polarization               | Linear, Vertical  |
| Max Power (Watts)          | 5                 |
| Weight (lbs)               | 0.3               |
| Storage Temp Range (C)     | -40 / +85         |
| Operation Temp Range (C)   | -30 / +70         |
| Outdoor Rated              | Yes               |

**Notes:**

1. Part to be packaged in accordance with STI specification 50-4100-013 unless otherwise specified.
2. Part must comply with STI specification SP-12509-01 (RoHS) and have manufacturer's Declaration of Conformity on file.

|   |                         |                  |
|---|-------------------------|------------------|
|  <b>MOTOROLA SOLUTIONS</b> |                         |                  |
| ANT: 11AN,DPA,8dBI,LP,CBL 0, N-M  |                         |                  |
| <b>DOC NO:</b><br>ML-5299-FHPA6-01R   | <b>SHEET:</b><br>1 OF 2 | <b>REV:</b><br>A |

Model:  Cut:  Pol:



Notes:

1. Gains shown are typical.



**MOTOROLA SOLUTIONS**

ANT: 11AN,DPA,8dBi,LP,CBL 0, N-M

**DOC NO:**

ML-5299-FHPA6-01R

**SHEET:**

2 OF 2

**REV:**

A