



HotZone Duo 1.0

IAP and MWR Users Guide

July 2006

This page intentionally left blank.

Copyrights

The Motorola products described in this document may include copyrighted Motorola computer programs. Laws in the United States and other countries reserve for Motorola certain exclusive rights for copyrighted computer programs. Accordingly, any copyrighted Motorola computer programs contained in the Motorola products described in this document may not be copied or reproduced in any manner without the express written permission of Motorola. Furthermore, the purchase of Motorola products shall not be deemed to grant either directly or by implication, estoppels or otherwise, any license under the copyrights, patents or patent applications of Motorola, except for the normal nonexclusive, royalty-free license to use that arises by operation of law in the sale of a product.

Disclaimer

Please note that certain features, facilities and capabilities described in this document may not be applicable to or licensed for use on a particular system, or may be dependent upon the characteristics of a particular mobile subscriber unit or configuration of certain parameters. Please refer to your Motorola contact for further information.

Trademarks

Motorola, the Motorola logo, and all other trademarks identified as such herein are trademarks of Motorola, Inc. All other product or service names are the property of their respective owners.

Copyrights

© 2006 Motorola, Inc. All rights reserved. No part of this document may be reproduced, transmitted, stored in a retrieval system, or translated into any language or computer language, in any form or by any means, without the prior written permission of Motorola, Inc.

This page intentionally left blank.

Contents

<hr style="border-top: 1px dotted black;"/>	
Chapter 1: Product Introduction	1-1
HotZone Duo Infrastructure Devices	1-1
IAPs and MWRs within a HOTZONE DUO Wireless Network	1-2
HotZone Duo Infrastructure Device Specifications	1-3
Chapter 2: Infrastructure Device Installation	2-1
Software Requirements	2-1
MWR and IAP Hardware Installation Notes	2-1
Equipment Specification	2-2
Ports and Connections	2-2
Operator Supply List	2-2
Optional Antennas	2-3
HotZone Duo Infrastructure Device Label.....	2-3
Infrastructure Device MAC Address Table	2-4
Infrastructure Device Assembly	2-5
Infrastructure Device Deployment and Installation.....	2-5
Grounding Considerations	2-6
Assembling the IAP and the MWR Device.....	2-7
Initial Infrastructure Device Configuration Information	2-7
Device Connectivity Testing.....	2-7
Chapter 3: Device Configuration.....	3-1
Adding an Infrastructure Device in MeshManager.....	3-1
Chapter 4: License Information.....	4-1
Motorola End User License Agreement.....	4-1
Third Party Licensing Agreements	4-7
OpenSSL - Copyright and License Information.....	4-7
XSupplicant version 1.2.3 - Copyright and License Information.....	4-9
Hostapd - Copyright and License Information.....	4-10
Chapter 5: Customer Information	5-1
Customer Service Information.....	5-1
Obtaining Support	5-1
System Information.....	5-1
Return Material Request	5-2

Radio Products and Services Division	5-2
Radio Products and Services Division Telephone Numbers.....	5-2
Returning System Components to Motorola	5-2
Returning FREs.....	5-2
Chapter 6: Certification and Safety Information	6-1
FCC Regulatory Information	6-1
Federal Communications Commission (FCC) Statement:	6-1
FCC RF Radiation Exposure Statement	6-2
Safety Information for the HOTZONE DUO Products	6-2
Safety Certification	6-3

List of Figures

Figure 1-1	MWR4300 Device.....	1-1
Figure 1-2	MWR and IAP Devices in Context of the HOTZONE DUO Network.....	1-2
Figure 2-1	IAP Infrastructure Device Product Label (sample).....	2-3
Figure 2-2	MWR Infrastructure Device Product Label (sample).....	2-3
Figure 2-3	Infrastructure Device External Connection Points.....	2-5
Figure 3-1	Add New Device Panel - MWR.....	3-2

This page intentionally left blank.

List of Tables

Table 1-1	HotZone Duo Device Specifications	1-3
Table 2-2	HOTZONE DUO Infrastructure Device Radio Characteristics	2-2
Table 2-3	Recommended Antennas for Infrastructure Devices.....	2-3
Table 2-4	MAC Address Table.....	2-4

This page intentionally left blank.

List of Procedures

.....
.
.
.
.

Procedure 2-1	Assembling the MWR and IAP Device.....	2-7
Procedure 2-2	Testing Infrastructure Device Connectivity	2-7

This page intentionally left blank.

Chapter 1: Product Introduction

This guide will provide you with technical specifications, installation guidelines, and testing procedures for the HotZone Duo Infrastructure Devices: the IAP4300 and the MWR4300.

Figure 1-1 MWR4300 Device



HotZone Duo Infrastructure Devices

Though both, IAPs, and MWRs, have a similar external appearance, each device has its own individual role within the HotZone Duo system. This document will address both of these devices and their differences. Both devices support maximum continuous data up to 54 Mbps for stationary 2.4 / 5.8 GHz 802.11 devices.

The Intelligent Access Point (IAP) acts as the transition point from the wireless network to the wired core network and from there, through media gateways, out to the Internet. The Mesh Wireless Router (MWR) is a wireless device that is primarily deployed to seed and extend the range between IAPs and Wireless Clients while simultaneously increasing the spectral efficiency of the network. The MWR includes an optional Ethernet connector. This allows a network of IP-enabled devices (such as a camera) to be directly addressed, accessed and managed over the HOTZONE DUO network.

IAP functionality includes:

- Transition Point between the wired and wireless network
- Dynamic Route Selection

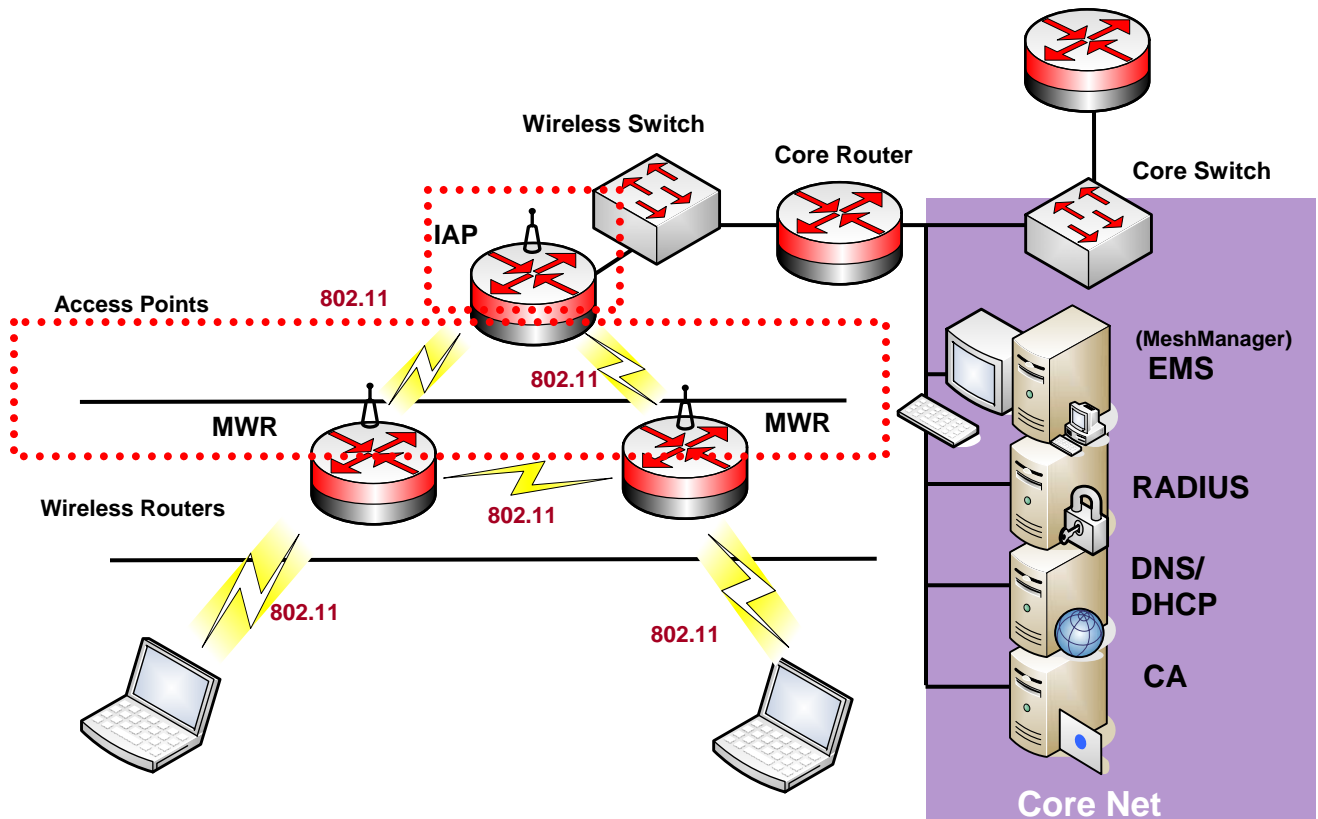
MWR functionality includes:

- Dynamic Route Selection
- Range Extension for all other network devices
- Automatic Load Balancing
- Network capacity optimization through small packet consolidation

IAPs and MWRs within a HOTZONE DUO Wireless Network

The **MWRs** and the **IAPs** are considered as fixed **Infrastructure** devices. Infrastructure devices provide area coverage access to wireless clients to the wired network. IAPs act as the principal network management interface for associated MWRs. In turn, MWRs provide standard 802.11 authentications and access to the Radius server.

Figure 1-2 MWR and IAP Devices in Context of the HOTZONE DUO Network



HotZone Duo Infrastructure Device Specifications

The following specifications apply to the HotZone Duo Infrastructure Devices as described in the table below:

Table 1-1 HotZone Duo Device Specifications

HotZone Duo Radio Characteristics	
Primary Radio Operating Freq. (GHz)	2.4 to 2.4835 (2nd ISM band)
Secondary Radio Operating Freq. (GHz)	5.725 to 5.825 (U-NII band)
Wi-Fi Support	802.11b/g at 2.4GHz; 802.11a at 5.8GHz
RF Modulation	CCK / OFDM
Output Power (Maximum)	36 dBm EIRP
Power Control	1dB increments
Receive Sensitivity	-77 dBm (at 54 Mbps) to -100 dBm (at 1 Mbps)
Antenna Type	Two (2) omnidirectional, 8 dBi (for 2.4 GHz Radio) and 10 dBi (for 5.8 GHz Radio)
Antenna Connector	N-Type
Routing	
Routing Engine	MeshConnex Layer 2 routing with Layer 1 situational-awareness
Routing Protocol	Patented, hybrid proactive/reactive routing (low latency & fast route convergence)
IEEE 802.11s Support	Upgradeable to final IEEE 802.11s standard via OTA software updates
Network	
Network Management Software	MeshManager Element Management System via secure SNMP v.3
Network Interface	Ruggedized 10/100Mbps Ethernet (RJ-45) port with surge suppression
Network Segmentation	Multiple SSIDs with VLAN mapping
Quality of Service (QoS)	802.11e, weighted fair queuing and IP precedence bits (ToS) supported via DSC
Security	
Virtual LAN (VLAN)	Supports up to sixteen (16) per node, or 4094 per network
Client Encryption Support	WEP, WPA (TKIP) and WPA2 (AES, 802.11i)
Internodal Encryption	Intra-Mesh Security
Authentication	802.1X (Infrastructure/Client) and MAC address hardware authentication
Power	
Power Requirements	120-240 VAC (with +/- 20% variation at 50-60Hz)
Power Connector	AC, NEMA 5-15 power cord • 8 ft (2.44m)

Power Consumption	15W (with both radios operating at 50% duty cycle)
Power over Ethernet (PoE)	Support for Canopy PoE connection
Physical	
Dimensions	9"x 6"x 3.5" (23.1cm x 15.2cm x 8.9cm)
Weight	4.5 lbs (2.04kg)
Packaging	Outdoor, all-weather enclosure (NEMA 4)
Mounting	3" (7.62cm) diameter post mounting
Environment	
Temperature Range	-35 to 60 °C
Humidity	0 to 100%, non-condensing
Certifications	FCC Part 15 & 90, UL, CSA
Available Options	
Mounting	Lamp post mount bracket assembly
Power	AC photo cell adapter
DC Input	HotZone Duo with 5-15 VDC input

Chapter 2: Infrastructure Device Installation

This chapter will provide hardware and software installation information for the HOTZONE DUO Infrastructure Devices.

Software Requirements

The MWR4300 device must be setup using the HOTZONE DUO MeshManager application suite.

MeshManager Element Manager System is used for device setup, configuration, and management of HotZone Duo infrastructure devices. Prior to using the MeshManager software for device installation and configuration, ensure that it is installed and running on a network computer. MeshManager will be used during the device setup process to validate the installation of the device and to manage it within the wireless network.

Detailed information about the MeshManager application is found in the *HOTZONE DUO MeshManager Users Guide*.

MWR and IAP Hardware Installation Notes

For a HOTZONE DUO deployment, a permanent power source for each MWR must be provided. All infrastructure devices require professional installation to ensure that the installation is performed in accordance with FCC licensing regulations

Infrastructure devices are fitted with two mounting brackets designed to be attached to light poles and other probable installation sites. Alternate mounting hardware is available for mounting directly to posts or structures that are too large for the standard brackets. Optional remote antenna mount hardware is also available for use with the alternate mounting hardware.

Equipment Specification

The specifications listed in the following table apply for all Infrastructure devices.

Table 2-2 HOTZONE DUO Infrastructure Device Radio Characteristics

Characteristic	2.4GHz	5.8GHz
	802.11 b/g	802.11a
Output Power	30 dBm	30 dBm
RF Modulation	CCK/OFDM	OFDM
Operating Frequency (GHz)	2.4-2.4835	5.725-5.825
Maximum Burst Data Rate	54 Mbps	54 Mbps
Spectrum Used	20 MHz	20 MHz

Ports and Connections

The following list defines the standard ports and connections on IAPs and MWRs:

- Device Enclosure with 2 N-type Female Antenna Connector
- 120V A/C Power Cable with flying leads
- One RJ45. (On IAP devices only: External power supported on only one. Canopy Connect POE Only.)
- On-board switch to supply power on Ethernet lines (for Canopy connectivity)
- Three pin RS232 connector
- Mounting Bracket (Standard and Optional)

Operator Supply List

The Network Operator must supply the following equipment:

- Mounting Location
- Power Source (120V A/C depending on IAP configuration)
- Ethernet connection between the IAP and MiSC.

Optional Antennas

The following antennas are recommended for use with Infrastructure Devices.

Table 2-3 Recommended Antennas for Infrastructure Devices

Manufacturer	Part Number	Gain	Usage
Maxrad	MFB2408NMDC	8 dBi	2.4 GHz Infrastructure
Radiall-Larsen	R380.700.212	10 dBi	5.8 GHz Infrastructure

HotZone Duo Infrastructure Device Label

The MAC address for each device subcomponent is recorded on a label located on the device enclosure. Record this number in the provided MWR MAC Address Table section. The MAC Addresses will be required later to configure and test the device.

Figure 2-1 IAP Infrastructure Device Product Label (sample)

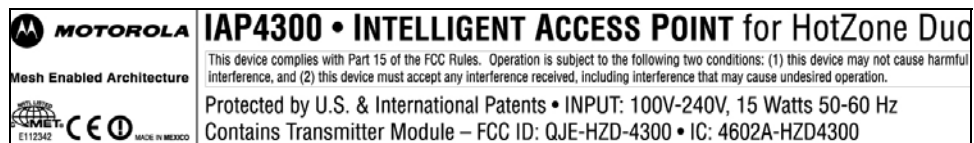


Figure 2-2 MWR Infrastructure Device Product Label (sample)



Infrastructure Device MAC Address Table

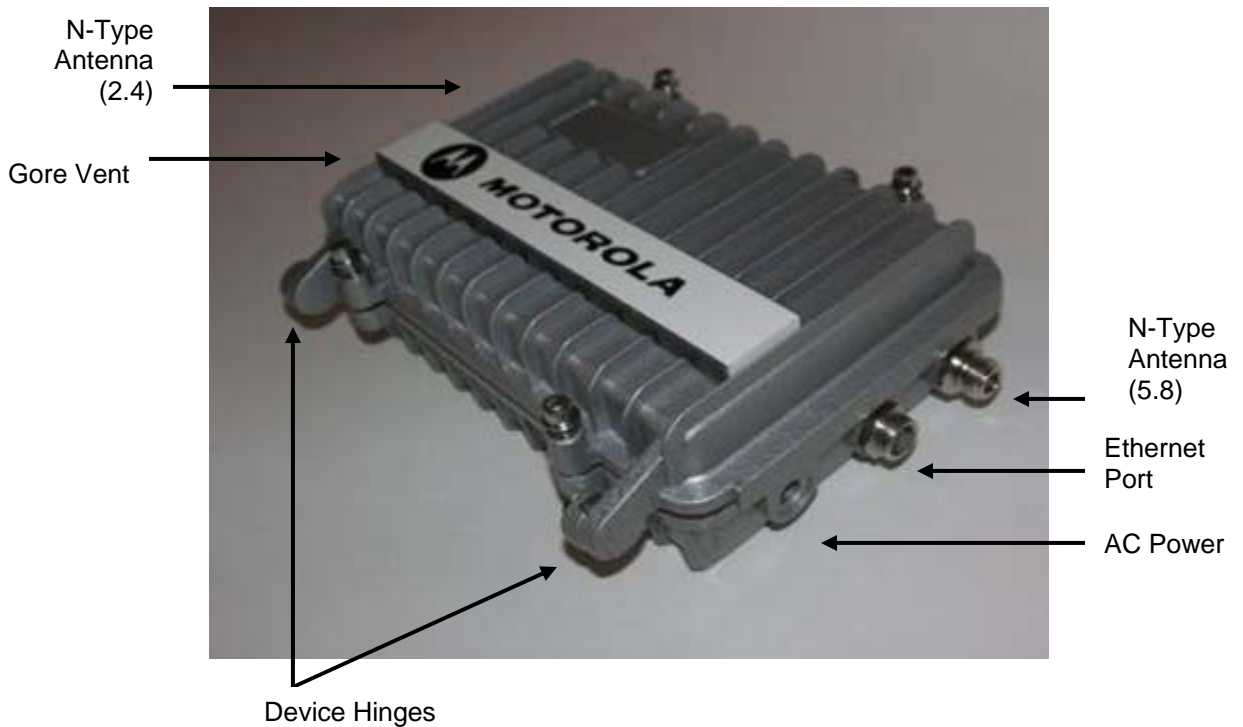
Table 2-4 **MAC Address Table**

IAP or MWR	Device Name	2.4 GHz 802.11 b/g	5.8 GHz 802.11a

Infrastructure Device Assembly

Figure 2-3 shows the external connection points for the MWR device.

Figure 2-3 Infrastructure Device External Connection Points



NOTE

Please note that the infrastructure device shown above does not represent the latest device design as of the time of this publication, however the device labels show the correct port designations and locations.

Infrastructure Device Deployment and Installation

The MWR and the IAP devices require professional installation to ensure that the installation is performed in accordance with FCC licensing regulations. All common precautions for grounding and electrostatic discharge protection should be observed during deployment and installation.

Observe the following additional guidelines when deploying fixed Infrastructure devices (MWR and IAP):

- The MWR or IAP may be mounted on a pole having a diameter of 1-3.5 inches, utilizing the provided brackets.

- The antenna must have a separation distance of at least 2 meters from the body of all persons and must not be co-located or operating in conjunction with any other antenna or transmitter.
- Users and installers must be provided with antenna installation and transmitter operating conditions to satisfy RF exposure compliance.
- When deploying the MWR or IAP, the antenna should be a minimum of 30 inches from any nearby metal poles to avoid distortion of the RF pattern.
- The installation location must provide power to the MWR and IAP.
- It is the responsibility of the Network Operator to ensure that the installation complies with any local building codes and permits.

Grounding Considerations

In order for a grounding system to be effective, a low impedance path to earth ground must be present. The grounding system must have conductors of sufficient size to withstand the high fault currents that must be shunted along this path. The lower the impedance the grounding system displays, the better its capability to perform its task. The impedance requirement for a communications site is determined by the classification of the site. Sites are broken down into 2 categories: Type A-Light Duty and Type B-Light Industrial/Commercial. Type A-Light Duty sites have impedance requirements of 25 ohms or less to ground whereas Type B- Light Industrial/Commercial sites have impedance requirements of less than 5 ohms to ground. HotZone Duo networks fall into the Type B-Light Industrial/Commercial category, and therefore must be treated with greater considerations as far as grounding requirements are concerned.

Since Type B grounding requirements stipulate 5 ohms or less impedance to earth ground, things such as soil pH, type of grounding rods, size of conductors, and ground enhancing materials must be taken into account to achieve this goal. To verify the impedance requirements are met, a special Earth/Ground Resistance Tester (megohmmeter) may be necessary.

To help the HotZone Duo product supply an easy way to be connected to a grounding electrode system, it is recommended that the following addition be added to the exterior of the enclosure:

- The installation of a high strength, thin sheet mounting dog point stud to allow for a mechanical connection to the grounding system. The stud should be of the HFH PEM style and of a suitable size to allow for the proper size conductor to be attached via irreversible crimp style ring terminal. The stud should also employ an anti cross-threading technology since devices will be field swappable and the devices will be returned and reused via a RMA policy. The specification recommends using #6 gauge, stranded wire for the connection of the cabinet to the grounding electrode system. This wire should be connected to the grounding system with a split bolt compression fitting. The wire used to make the connection should be green or green with a yellow stripe. The supplied grounding stud will be specifically designated as the grounding system attachment point. This stud will be used to connect the HotZone Duo product to any grounding electrode enhancements needed should the site not conform to Type B grounding requirements and additional means of grounding electrodes are installed.

- If the HotZone Duo product is attached to a light arm and the attachment point meets the Type B grounding requirements, then the grounding stud attachment point is not required to be used.

Assembling the IAP and the MWR Device

Use the following procedure to assemble an IAP and MWR Devices.

Procedure 2-1 Assembling the MWR and IAP Device

1	Place the brackets at the desired position on the pole.
2	Adjust the position of the box so that the antenna connectors are positioned vertically. Align the antennas with the N-type connectors on the box and rotate to close.
3	Insert the cable into the external Ethernet port and tighten the connector to ensure a weatherproof seal.
4	Insert the Power Plug into the 4-pin connector.

Initial Infrastructure Device Configuration Information

Prior to attempting configuration of an IAP or an MWR device, the device must be powered up and have connectivity to the MiSC.

Device Connectivity Testing

When a MiSC has been setup on the network, verify connectivity to the device using the following procedure:

Procedure 2-2 Testing Infrastructure Device Connectivity

1	Apply power to the device, the device should be operation in 60 to 120 seconds
2	Obtain the 802.11 MAC addresses for the device subcomponents that were recorded in the MAC Address Table earlier in this manual. The address will be in the format 02-05-12-30-xx-yy.
3	Within MeshManager's Device Manager screen, right-click on the appropriate MWR or IAP device in the Device Tree and select the Ping Device option.
4	Check for a successful response to the Ping command in the <i>Named Device</i> results dialog box. A successful response to the ping commands verifies connectivity to the device (MWR or IAP).
5	Repeat steps 1-4 for additional MWR or IAP devices.

This page intentionally left blank.

Chapter 3: Device Configuration

This chapter contains information which will assist you with the available configuration options.

Use HOTZONE DUO MeshManager Device Manager application to configure HotZone Duo Infrastructure devices. For additional device configuration information, see the *HOTZONE DUO MeshManager Users Guide* and the *HOTZONE DUO Network Setup and Installation Guide*.

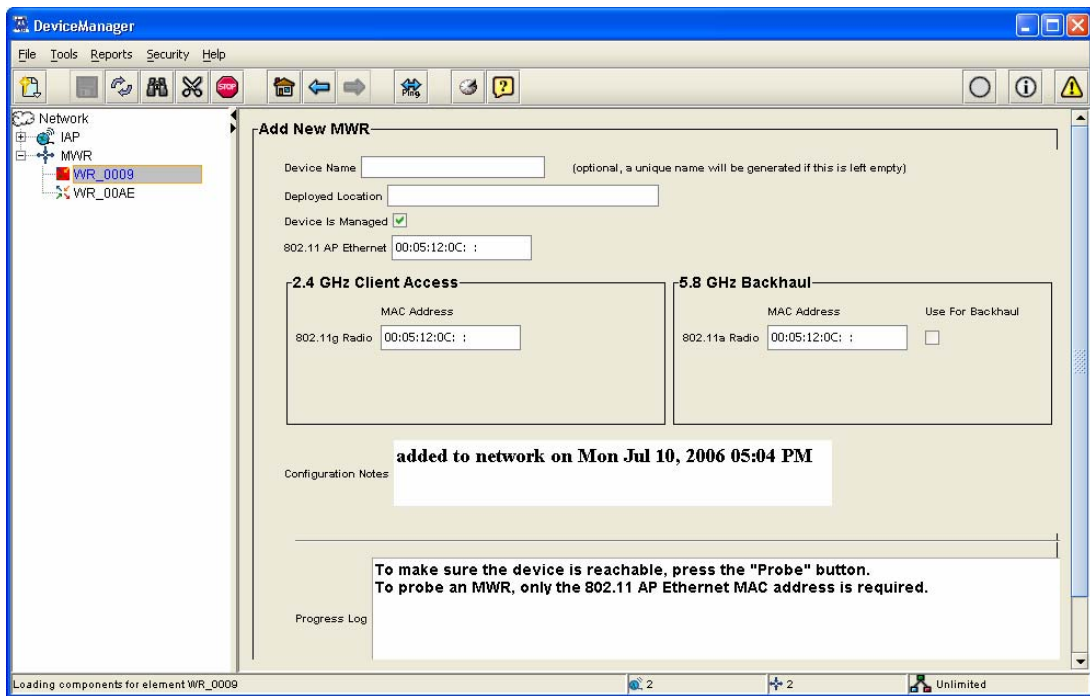
Adding an Infrastructure Device in MeshManager

An Infrastructure device must be added to the network through the MeshManager Device Manager before it can be managed. Infrastructure Devices (IAP or WR) can be added to the network using the **Add New Device** menu option or the Add New Device Toolbar button.

When you select the type of device to be added, an **Add New Device** panel will be displayed. The example below is the **Add New Device** panel for an MWR.

NOTE: Prior to adding an infrastructure device on the network, its security features first need to be prepared or staged. See the *HOTZONE DUO Network Setup and Installation Guide* for more information on this topic.

Figure 3-1 Add New Device Panel - MWR



Chapter 4: License Information

This chapter includes the contents of the Motorola End User License Agreement (EULA) as well as a Third Party License section.

Motorola End User License Agreement

MOTOROLA, INC.

END USER LICENSE AGREEMENT

Motorola is willing to license its Mesh Networking Software Solutions (defined as “Products” below) and the accompanying documentation to you only on the condition that you accept all the terms in this License Agreement (“Agreement”).

IMPORTANT: READ THE FOLLOWING TERMS AND CONDITIONS BEFORE USING THE ACCOMPANYING PRODUCTS.

BY CLICKING ON THE “ACCEPT” BUTTON BELOW, YOU ACKNOWLEDGE THAT YOU HAVE READ THIS AGREEMENT, UNDERSTAND IT AND AGREE TO BE BOUND BY THE TERMS OF THIS AGREEMENT. IF YOU DO NOT AGREE TO THE TERMS OF THIS AGREEMENT, MOTOROLA IS NOT WILLING TO LICENSE THE PRODUCTS TO YOU. YOU SHOULD CLICK ON THE “DO NOT ACCEPT” BUTTON TO DISCONTINUE THE SOFTWARE INSTALLATION PROCESS. IF YOU DO NOT AGREE TO THESE TERMS, YOU MAY, WITHIN FIFTEEN (15) DAYS, RETURN THIS ENTIRE PRODUCT TO THE LOCATION WHERE YOU ACQUIRED IT OR PROVIDE WRITTEN VERIFICATION OF DELETION OF ALL COPIES OF THE ENTIRE PRODUCT IF YOU HAVE NOT PHYSICALLY RECEIVED A PRODUCT FOR A FULL REFUND.

1. DEFINITIONS. In this Agreement, the word “Software” refers to the set of instructions for computers, in executable form and in any media, (which may include diskette, CD-ROM, downloadable internet, hardware, or firmware) licensed to you. The word “Documentation” refers to electronic or printed manuals and accompanying instructional aids licensed to you. The word “Product(s)” refers to the specific combination of Software and Documentation that you have licensed and which has been provided to you under the terms of this Agreement.

2. GRANT OF LICENSE. Motorola, Inc. (“Motorola”) grants you (“Licensee” or “you”) a personal, nonexclusive, nontransferable license to use the Products subject to the Conditions Of Use set forth in Section 3 below and the terms and conditions of this Agreement. Any terms or conditions appearing on the face or reverse side of any purchase order, purchase order acknowledgment or other order document that are different from, or in addition to, the terms of this Agreement will not be binding on the parties, even if payment is accepted.

3. CONDITIONS OF USE. Any use of the Products outside of the conditions set forth herein is strictly prohibited and will be deemed a breach of this Agreement.

3.1 Only your employees or agents may use the Products. You shall take all necessary steps to insure that your employees and agents abide by the terms of this Agreement.

3.2 You shall use the Products (i) only for your internal business purposes; (ii) only as described in the Products; and (iii) in strict accordance with this Agreement.

3.3 Licensee may install and use the Products on a single client workstation, provided that the use is in conformance with the terms set forth in this Agreement. The Products may not be transferred to another party without the express written consent of Motorola, regardless of whether or not such transfer is accomplished by physical or electronic means.

3.4. Portions of the Products are protected by United States copyright laws, international treaty provisions, and other applicable laws. Therefore, you must treat the Products like any other copyrighted material (e.g., a book or musical recording) except that you may either: (a) make one (1) copy of the transportable part of the Products (which typically is supplied on diskette, CD-ROM, or downloadable internet), solely for back-up purposes; or (b) copy the transportable part of the Products to a PC hard disk, provided you keep the original solely for back-up purposes. If the Documentation is in printed form, it may not be copied. If the Documentation is in electronic form, you may print out one (1) copy, which then may not be copied. With regard to the copy made for backup or archival purposes, you agree to reproduce any Motorola copyright notice, and other proprietary legends appearing thereon. Such copyright notice(s) may appear in any of several forms, including machine-readable form, and you agree to reproduce such notice in each form in which it appears, to the extent it is physically possible to do so. Unauthorized duplication

of the Software or Documentation constitutes copyright infringement and in the United States is punishable in federal court by fine and imprisonment.

3.5 You shall not export, re-export, resell, ship or divert or cause to be exported, re-exported, resold, shipped or diverted, directly or indirectly, the Products under this Agreement.

4. TITLE; RESTRICTIONS. If you transfer possession of any copy of the Products to another party outside of the terms of this agreement, your license is automatically terminated. Title and copyrights to the Products and any copies made by you remain with Motorola and its licensors. You shall not, and shall not permit others to: (1) modify, translate, decompile, bootleg, reverse engineer, disassemble, or extract the inner workings of the Software or Documentation, (2) copy the look-and-feel or functionality of the Software or Documentation; (3) remove any proprietary notices, marks, labels, or logos from the Software or Documentation; (4) rent or transfer all or some of the Software or Documentation to any other party without Motorola's prior written consent; or (5) utilize any computer software or hardware which is designed to defeat any copy protection device, should the Products be equipped with such a protection device. If the Products contain Software or Documentation that is provided on multiple types of media (such as diskette, CD-ROM, downloadable internet), then you shall only use the medium which best meets your specific needs, and shall not loan, rent, lease, or transfer the other media contained in the package without Motorola's written consent. Unauthorized copying of the Software or Documentation, or failure to comply with any of the provisions of this Agreement, will result in automatic termination of this license.

5. CONFIDENTIALITY. You acknowledge that all Products contain valuable proprietary information and trade secrets and that unauthorized or improper use of the Products will result in irreparable harm to Motorola for which monetary damages would be inadequate and for which Motorola will be entitled to immediate injunctive relief. Accordingly, you will limit access to the Products to those of your employees and agents who need to use the Products for your internal business purposes, and you will take appropriate action with those employees and agents to preserve the confidentiality of the Products, using the same degree of care to avoid unauthorized or improper disclosure as you use for the protection of your own proprietary software, but in no event less than reasonable care.

Notwithstanding anything to the contrary herein, you shall have no obligation to preserve the confidentiality of any proprietary information that: (i) was in the public domain at the time of disclosure; (ii) entered the public domain through no fault of yours; (iii) was given to you free of any obligation to keep it confidential; (iv) is independently developed by you; or (v) is disclosed as required by law provided that you notify Motorola prior to such disclosure and provide Motorola with a reasonable opportunity to respond.

6. RIGHT TO USE MOTOROLA'S NAME. Except as required in Section 3.4 above, you shall not, during the term of this Agreement or thereafter, use any trademark, of Motorola, or any word or symbol likely to be confused with any Motorola trademark, either alone or in any combination with another word or words.

7. PAYMENT. The rights granted hereunder are contingent upon payment for the Products. All payments shall be due net thirty (30) days from date of the invoice.

8. UPGRADES AND UPDATES. If the Products are licensed to you as an upgrade or update to a product previously licensed to you, you must destroy the Products previously licensed to you, including any copies, within thirty (30) days of your receipt of the update or upgrade.

9. MAINTENANCE. Motorola shall not be responsible for maintenance or field service of the Software under this Agreement.

10. LIMITED WARRANTY. All diskettes or CD-ROMS on which the Products are furnished ("Media") are warranted to be free from manufacturing and material defects for ninety (90) days after the shipment date of the Products to you. Media that become defective during such period shall be repaired or, at Motorola's option, replaced. This limited warranty is contingent upon proper use of the Media and does not cover Products which have been tampered with, modified, or subjected to unusual physical or electrical stress. Tampering with or removal of any factory seal or label on any Media voids this warranty and releases Motorola from any and all liability.

11. DISCLAIMER. EXCEPT FOR THE ABOVE EXPRESS LIMITED WARRANTIES, MOTOROLA MAKES, AND YOU RECEIVE, NO OTHER WARRANTIES OF ANY KIND, WHETHER EXPRESS, IMPLIED, STATUTORY, OR IN ANY COMMUNICATION WITH YOU. MOTOROLA SPECIFICALLY DISCLAIMS ANY OTHER WARRANTY INCLUDING THE IMPLIED WARRANTIES OF MERCHANTABILITY, NONINFRINGEMENT, OR FITNESS FOR A PARTICULAR PURPOSE. THE PRODUCTS ARE PROVIDED "AS IS." MOTOROLA DOES NOT WARRANT THAT THE OPERATION OF THE SOFTWARE WILL BE UNINTERRUPTED OR ERROR FREE OR THAT DEFECTS IN THE SOFTWARE WILL BE CORRECTED. MOTOROLA MAKES NO WARRANTY WITH RESPECT TO THE CORRECTNESS, ACCURACY, OR RELIABILITY OF THE SOFTWARE AND DOCUMENTATION. Some jurisdictions do not allow the exclusion of implied warranties, so the above exclusion may not apply to you.

12. REMEDIES. The entire liability of Motorola, and your exclusive remedy under the warranty provided herein will be, at Motorola's option, to repair or replace any Media found to be defective within the warranty period, or to refund the purchase price and

terminate this Agreement. To seek such a remedy, you must return the entire Product to Motorola, with a copy of the original purchase receipt within the warranty period.

13. LIMITATION OF LIABILITY. THE TOTAL LIABILITY OF MOTOROLA UNDER THIS AGREEMENT FOR DAMAGES SHALL NOT EXCEED THE TOTAL AMOUNT PAID BY YOU FOR THE PRODUCTS LICENSED UNDER THIS AGREEMENT. IN NO EVENT WILL MOTOROLA BE LIABLE IN ANY WAY FOR INCIDENTAL, CONSEQUENTIAL, INDIRECT, SPECIAL OR PUNITIVE DAMAGES OF ANY NATURE, INCLUDING WITHOUT LIMITATION, LOST BUSINESS PROFITS, OR LIABILITY OR INJURY TO THIRD PERSONS, WHETHER FORESEEABLE OR NOT, REGARDLESS OF WHETHER MOTOROLA HAS BEEN ADVISED OF THE POSSIBILITY OF SUCH DAMAGES. Some jurisdictions do not permit limitations of liability for incidental or consequential damages, so the above exclusions may not apply to you.

14. U.S. GOVERNMENT. If you are acquiring the Products on behalf of any unit or agency of the U.S. Government, the following shall apply. Use, duplication or disclosure of the Products is subject to the restrictions set forth in subparagraphs (c)(1) and (2) of the Commercial Computer Software-Restricted Rights clause at FAR 52.227-19 (JUNE 1987), if applicable, unless being provided to the Department of Defense. If being provided to the Department of Defense, use, duplication, or disclosure of the Products is subject to the restricted rights set forth in subparagraph (c)(1)(ii) of the Rights in Technical Data and Computer Software clause at DFARS 252.227-7013 (OCT 1988), if applicable. Software and Documentation may or may not include a Restricted Rights notice, or other notice referring specifically to the terms and conditions of this Agreement. The terms and conditions of this Agreement shall each continue to apply, but only to the extent that such terms and conditions are not inconsistent with the rights provided to you under the aforementioned provisions of the FAR or DFARS, as applicable to the particular procuring agency and procurement transaction."

15. TERM OF LICENSE. Your right to use the Products will begin when you click the "ACCEPT" button below, which constitutes acceptance of the terms and conditions herein, and will continue in perpetuity unless terminated as follows. Your right to use the Products will terminate immediately without notice upon a breach of this Agreement by you. Otherwise, this Agreement may be terminated by either party upon thirty (30) days prior written notice. Within thirty (30) days after termination of this Agreement, you will certify to Motorola in writing that through your best efforts, and to the best of your knowledge, the original and all copies, in whole or in part, in any form, of the Software and all related material and Documentation, have been destroyed, except that, with prior written consent from Motorola, you may retain one copy for archival or backup purposes. You may not sublicense, assign or transfer the license or the Products, except as expressly provided in this Agreement. Any attempt to otherwise sublicense, assign or transfer any of the rights, duties or obligations hereunder is null and void.

16. GOVERNING LAW. This Agreement shall be governed by the laws of the United States of America to the extent that they apply and otherwise by the laws of the State of Illinois.

17. ASSIGNMENT. This Agreement may not be assigned or otherwise transferred by you.

18. SURVIVAL OF PROVISIONS. The parties agree that where the context of any provision indicates an intent that it shall survive the term of this Agreement, then it shall survive.

19. ENTIRE AGREEMENT. This Agreement contains the parties' entire agreement regarding your use of the Products and may be amended only in writing signed by both parties, except that Motorola may modify this Agreement as necessary to comply with applicable laws and regulations including FCC regulations.

20. THIRD PARTY SOFTWARE. The Software may contain one or more items of Third-Party Software supplied by other third-party suppliers. The terms of this Agreement govern your use of any Third-Party Software UNLESS A SEPARATE THIRD-PARTY SOFTWARE LICENSE IS INCLUDED, IN WHICH CASE YOUR USE OF THE THIRD-PARTY SOFTWARE WILL THEN BE GOVERNED BY THE SEPARATE THIRD-PARTY LICENSE.

IF THE FOREGOING TERMS AND CONDITIONS ARE ACCEPTABLE TO YOU, PLEASE INDICATE YOUR AGREEMENT AND ACCEPTANCE BY CLICKING BELOW ON THE BUTTON LABELED "ACCEPT".

IF THE FOREGOING TERMS AND CONDITIONS ARE NOT ACCEPTABLE TO YOU, PLEASE CLICK ON THE "DO NOT ACCEPT" BUTTON BELOW.

MOTOROLA and the Stylized M logo are registered in the US Patent & Trademark Office.

Third Party Licensing Agreements

The following section lists the respective copyright owners and the associated license information for portions of Open Source code that may be included in Motorola's HotZone Duo Product line.

OpenSSL - Copyright and License Information

LICENSE ISSUES

=====

The OpenSSL toolkit stays under a dual license, i.e. both the conditions of the OpenSSL License and the original SSLeay license apply to the toolkit. See below for the actual license texts. Actually both licenses are BSD-style

Open Source licenses. In case of any license issues related to OpenSSL please contact openssl-core@openssl.org.

OpenSSL License

```
/* =====
 * Copyright (c) 1998-2005 The OpenSSL Project. All rights reserved.
 *
 * Redistribution and use in source and binary forms, with or without
 * modification, are permitted provided that the following conditions
 * are met:
 *
 * 1. Redistributions of source code must retain the above copyright
 * notice, this list of conditions and the following disclaimer.
 *
 * 2. Redistributions in binary form must reproduce the above copyright
 * notice, this list of conditions and the following disclaimer in
 * the documentation and/or other materials provided with the
 * distribution.
 *
 * 3. All advertising materials mentioning features or use of this
 * software must display the following acknowledgment:
 * "This product includes software developed by the OpenSSL Project
 * for use in the OpenSSL Toolkit. (http://www.openssl.org/)"
 *
 * 4. The names "OpenSSL Toolkit" and "OpenSSL Project" must not be used to
 * endorse or promote products derived from this software without
 * prior written permission. For written permission, please contact
 * openssl-core@openssl.org.
 *
 * 5. Products derived from this software may not be called "OpenSSL"
 * nor may "OpenSSL" appear in their names without prior written
 * permission of the OpenSSL Project.
 *
 * 6. Redistributions of any form whatsoever must retain the following
```

July 2006

Chapter 4: License Information

```
*      acknowledgment:
*      "This product includes software developed by the OpenSSL Project
*      for use in the OpenSSL Toolkit (http://www.openssl.org/)"
*
* THIS SOFTWARE IS PROVIDED BY THE OpenSSL PROJECT ``AS IS'' AND ANY
* EXPRESSED OR IMPLIED WARRANTIES, INCLUDING, BUT NOT LIMITED TO, THE
* IMPLIED WARRANTIES OF MERCHANTABILITY AND FITNESS FOR A PARTICULAR
* PURPOSE ARE DISCLAIMED.  IN NO EVENT SHALL THE OpenSSL PROJECT OR
* ITS CONTRIBUTORS BE LIABLE FOR ANY DIRECT, INDIRECT, INCIDENTAL,
* SPECIAL, EXEMPLARY, OR CONSEQUENTIAL DAMAGES (INCLUDING, BUT
* NOT LIMITED TO, PROCUREMENT OF SUBSTITUTE GOODS OR SERVICES;
* LOSS OF USE, DATA, OR PROFITS; OR BUSINESS INTERRUPTION)
* HOWEVER CAUSED AND ON ANY THEORY OF LIABILITY, WHETHER IN CONTRACT,
* STRICT LIABILITY, OR TORT (INCLUDING NEGLIGENCE OR OTHERWISE)
* ARISING IN ANY WAY OUT OF THE USE OF THIS SOFTWARE, EVEN IF ADVISED
* OF THE POSSIBILITY OF SUCH DAMAGE.
* =====
*
* This product includes cryptographic software written by Eric Young
* (eay@cryptsoft.com).  This product includes software written by Tim
* Hudson (tjh@cryptsoft.com).
*/
```

Original SSLeay License

```
/* Copyright (C) 1995-1998 Eric Young (eay@cryptsoft.com)
 * All rights reserved.
 *
 * This package is an SSL implementation written
 * by Eric Young (eay@cryptsoft.com).
 * The implementation was written so as to conform with Netscapes SSL.
 *
 * This library is free for commercial and non-commercial use as long as
 * the following conditions are aheared to.  The following conditions
 * apply to all code found in this distribution, be it the RC4, RSA,
 * lhash, DES, etc., code; not just the SSL code.  The SSL documentation
 * included with this distribution is covered by the same copyright terms
 * except that the holder is Tim Hudson (tjh@cryptsoft.com).
 *
 * Copyright remains Eric Young's, and as such any Copyright notices in
 * the code are not to be removed.
 * If this package is used in a product, Eric Young should be given
attribution
 * as the author of the parts of the library used.
 * This can be in the form of a textual message at program startup or
 * in documentation (online or textual) provided with the package.
 *
 * Redistribution and use in source and binary forms, with or without
 * modification, are permitted provided that the following conditions
 * are met:
 * 1. Redistributions of source code must retain the copyright
 * notice, this list of conditions and the following disclaimer.
 * 2. Redistributions in binary form must reproduce the above copyright
 * notice, this list of conditions and the following disclaimer in the
 * documentation and/or other materials provided with the distribution.
 * 3. All advertising materials mentioning features or use of this software
 * must display the following acknowledgement:
```

```

*   "This product includes cryptographic software written by
*   Eric Young (eay@cryptsoft.com)"
*   The word 'cryptographic' can be left out if the routines from the
library
*   being used are not cryptographic related :-).
* 4. If you include any Windows specific code (or a derivative thereof) from
*   the apps directory (application code) you must include an
acknowledgement:
*   "This product includes software written by Tim Hudson
(tjh@cryptsoft.com)"
*
* THIS SOFTWARE IS PROVIDED BY ERIC YOUNG ``AS IS'' AND
* ANY EXPRESS OR IMPLIED WARRANTIES, INCLUDING, BUT NOT LIMITED TO, THE
* IMPLIED WARRANTIES OF MERCHANTABILITY AND FITNESS FOR A PARTICULAR PURPOSE
* ARE DISCLAIMED. IN NO EVENT SHALL THE AUTHOR OR CONTRIBUTORS BE LIABLE
* FOR ANY DIRECT, INDIRECT, INCIDENTAL, SPECIAL, EXEMPLARY, OR CONSEQUENTIAL
* DAMAGES (INCLUDING, BUT NOT LIMITED TO, PROCUREMENT OF SUBSTITUTE GOODS
* OR SERVICES; LOSS OF USE, DATA, OR PROFITS; OR BUSINESS INTERRUPTION)
* HOWEVER CAUSED AND ON ANY THEORY OF LIABILITY, WHETHER IN CONTRACT, STRICT
* LIABILITY, OR TORT (INCLUDING NEGLIGENCE OR OTHERWISE) ARISING IN ANY WAY
* OUT OF THE USE OF THIS SOFTWARE, EVEN IF ADVISED OF THE POSSIBILITY OF
* SUCH DAMAGE.
*
* The licence and distribution terms for any publically available version or
* derivative of this code cannot be changed. i.e. this code cannot simply
be
* copied and put under another distribution licence
* [including the GNU Public Licence.
*/

```

XSupplicant version 1.2.3 - Copyright and License Information

XSupplicant -- A client-side 802.1x implementation

This code is released under both the GPL version 2 and BSD licenses.
Either license may be used. The respective licenses are found below.

Copyright (C) 2002 Bryan D. Payne & Nick L. Petroni Jr.
Copyright (C) 2003, 2004 The Open1x Team
All Rights Reserved

--- GPL Version 2 License ---

This program is free software; you can redistribute it and/or
modify it under the terms of the GNU General Public License
as published by the Free Software Foundation; either version 2
of the License, or (at your option) any later version.

This program is distributed in the hope that it will be useful,
but WITHOUT ANY WARRANTY; without even the implied warranty of
MERCHANTABILITY or FITNESS FOR A PARTICULAR PURPOSE. See the
GNU General Public License for more details.

You should have received a copy of the GNU General Public License
along with this program; if not, write to the Free Software

Foundation, Inc., 59 Temple Place - Suite 330, Boston, MA 02111-1307, USA.

--- BSD License ---

Redistribution and use in source and binary forms, with or without modification, are permitted provided that the following conditions are met:

- Redistributions of source code must retain the above copyright notice, this list of conditions and the following disclaimer.
- Redistributions in binary form must reproduce the above copyright notice, this list of conditions and the following disclaimer in the documentation and/or other materials provided with the distribution.
- All advertising materials mentioning features or use of this software must display the following acknowledgement:

This product includes software developed by the University of Maryland at College Park, the Openlx team, and its contributors.

- Neither the name of the University or Openlx team, nor the names of its contributors may be used to endorse or promote products derived from this software without specific prior written permission.

THIS SOFTWARE IS PROVIDED BY THE COPYRIGHT HOLDERS AND CONTRIBUTORS "AS IS" AND ANY EXPRESS OR IMPLIED WARRANTIES, INCLUDING, BUT NOT LIMITED TO, THE IMPLIED WARRANTIES OF MERCHANTABILITY AND FITNESS FOR A PARTICULAR PURPOSE ARE DISCLAIMED. IN NO EVENT SHALL THE COPYRIGHT OWNER OR CONTRIBUTORS BE LIABLE FOR ANY DIRECT, INDIRECT, INCIDENTAL, SPECIAL, EXEMPLARY, OR CONSEQUENTIAL DAMAGES (INCLUDING, BUT NOT LIMITED TO, PROCUREMENT OF SUBSTITUTE GOODS OR SERVICES; LOSS OF USE, DATA, OR PROFITS; OR BUSINESS INTERRUPTION) HOWEVER CAUSED AND ON ANY THEORY OF LIABILITY, WHETHER IN CONTRACT, STRICT LIABILITY, OR TORT (INCLUDING NEGLIGENCE OR OTHERWISE) ARISING IN ANY WAY OUT OF THE USE OF THIS SOFTWARE, EVEN IF ADVISED OF THE POSSIBILITY OF SUCH DAMAGE.

Hostapd - Copyright and License Information

hostapd - user space IEEE 802.11 AP and IEEE 802.1X/WPA/WPA2/EAP Authenticator and RADIUS authentication server

=====
Copyright (c) 2002-2006, Jouni Malinen <jkmaline@cc.hut.fi> and contributors
All Rights Reserved.

This program is dual-licensed under both the GPL version 2 and BSD license. Either license may be used at your option.

License

GPL v2:

This program is free software; you can redistribute it and/or modify

July 2006

it under the terms of the GNU General Public License version 2 as published by the Free Software Foundation.

This program is distributed in the hope that it will be useful, but WITHOUT ANY WARRANTY; without even the implied warranty of MERCHANTABILITY or FITNESS FOR A PARTICULAR PURPOSE. See the GNU General Public License for more details.

You should have received a copy of the GNU General Public License along with this program; if not, write to the Free Software Foundation, Inc., 59 Temple Place, Suite 330, Boston, MA 02111-1307 USA

(this copy of the license is in COPYING file)

Alternatively, this software may be distributed under the terms of BSD license:

Redistribution and use in source and binary forms, with or without modification, are permitted provided that the following conditions are met:

1. Redistributions of source code must retain the above copyright notice, this list of conditions and the following disclaimer.
2. Redistributions in binary form must reproduce the above copyright notice, this list of conditions and the following disclaimer in the documentation and/or other materials provided with the distribution.
3. Neither the name(s) of the above-listed copyright holder(s) nor the names of its contributors may be used to endorse or promote products derived from this software without specific prior written permission.

THIS SOFTWARE IS PROVIDED BY THE COPYRIGHT HOLDERS AND CONTRIBUTORS "AS IS" AND ANY EXPRESS OR IMPLIED WARRANTIES, INCLUDING, BUT NOT LIMITED TO, THE IMPLIED WARRANTIES OF MERCHANTABILITY AND FITNESS FOR A PARTICULAR PURPOSE ARE DISCLAIMED. IN NO EVENT SHALL THE COPYRIGHT OWNER OR CONTRIBUTORS BE LIABLE FOR ANY DIRECT, INDIRECT, INCIDENTAL, SPECIAL, EXEMPLARY, OR CONSEQUENTIAL DAMAGES (INCLUDING, BUT NOT LIMITED TO, PROCUREMENT OF SUBSTITUTE GOODS OR SERVICES; LOSS OF USE, DATA, OR PROFITS; OR BUSINESS INTERRUPTION) HOWEVER CAUSED AND ON ANY THEORY OF LIABILITY, WHETHER IN CONTRACT, STRICT LIABILITY, OR TORT (INCLUDING NEGLIGENCE OR OTHERWISE) ARISING IN ANY WAY OUT OF THE USE OF THIS SOFTWARE, EVEN IF ADVISED OF THE POSSIBILITY OF SUCH DAMAGE.

This page intentionally left blank.

Chapter 5: Customer Information

This chapter provides information about how to obtain customer service support from Motorola and describes the type of information you should have available prior to making the support call.

Customer Service Information

If you have read this document and made every effort to resolve installation or operation issues yourself and still require help, please contact Motorola System Support Center (SSC) using the following contact information:

Hours of Operation

7 days a week, 24 hours

Technical Support: 800-221-7144 (USA)

Obtaining Support

Motorola provides technical support services for your system and recommends that you coordinate warranty and repair activities through the Motorola System Support Center (SSC). When you consult the Motorola SSC, you increase the likelihood that problems are rectified in a timely fashion and that warranty requirements are satisfied. Check your contract for specific warranty and service information.

System Information

To be provided with the best possible opportunity for support, collect the following system information and have it available when obtaining support.

- Location of the system
- Date the system was put into service
- Software or firmware version information for components of your system

- Serial number(s) of the device(s) or component(s) requiring support
- A written description of the symptom or observation of the problem:
 - When did it first appear?
 - Can it be reproduced?
 - What is the step-by-step procedure to cause it?
- Do other circumstances contribute to the problem? For example, changes in weather or other conditions?
- Maintenance action preceding problem:
 - Upgrade of software or equipment
 - Change in the hardware or software configuration
 - Software reload - from backup or from CD-ROM (note the version and date)

Return Material Request

After collecting system information, contact the Motorola System Support Center for assistance or to obtain a Return Material Authorization (RMA) number for faulty Field Replaceable Entities (FREs):

North America: 800-221-7144

Radio Products and Services Division

The Radio Products and Services Division is your source for manuals and replacement parts.

Radio Products and Services Division Telephone Numbers

The telephone numbers for ordering are: (800)-422-4210 (US and Canada orders)

The fax numbers are: (800)-622-6210 (US and Canada orders)

The number for help identifying an item or part number is (800)-422-4210; select choice "3" from the menu

Returning System Components to Motorola

Motorola's service philosophy is based on field replaceable entities (FREs). FREs are system components identified by Motorola to be returned to Motorola for repair.

Returning FREs

Return faulty FREs to Motorola for repair. When you return an assembly for service, follow these best practices:

- Place any assembly containing CMOS devices in a static-proof bag or container for shipment.
- Obtain a return authorization (RA) number from the Motorola System Support Center.

- Include the warranty, model, kit numbers, and serial numbers on the job ticket, as necessary.
- If the warranty is out of date, you must have a purchase order.
- Print the return address clearly, in block letters.
- Provide a phone number where your repair technician can be reached.
- Include the contact person's name for return.
- Pack the assembly tightly and securely, preferably in its original shipping container.

This page intentionally left blank.

Chapter 6: Certification and Safety Information

This chapter lists the relevant FCC Certification and Product Safety Information for the HOTZONE DUO devices described in this manual.

FCC Regulatory Information

This device complies with Part 15 of the FCC Rules. Operation is subject to the following two conditions: (1) this device may not cause harmful interference, and (2) this device must accept any interference received; including interference that may cause undesired operation.

This device complies with Part 15 of the FCC Rules. Operation is subject to the following two conditions: (1) this device may not cause harmful interference, and (2) this device must accept any interference received; including interference that may cause undesired operation.

The IAP4300 (Intelligent Access Point, Transmitter Module FCC ID: QJE-HZD-4300 – IC: 4602A-HZD4300) is an infrastructure device that is positioned at a fixed location such as a building rooftop. The IAP requires professional installation to ensure that the installation is performed in accordance with FCC licensing regulations.

The MWR4300 (Mesh Wireless Router, Transmitter Module FCC ID: QJE-HZD – IC: 4602-HZD4300) is an infrastructure device positioned in a fixed location, such as on a pole, wall, or rooftop. The MWR requires professional installation to ensure the installation is performed in accordance with FCC licensing regulations..

Federal Communications Commission (FCC) Statement:

IAP/MWR

This equipment has been tested and found to comply with the limits for a Class A digital device, pursuant to part 15 of the FCC Rules. These limits are designed to provide reasonable protection against harmful interference when the equipment is operated in a commercial environment. This equipment generates, uses, and can radiate radio frequency energy and, if not installed and used in accordance with the instruction manual, may cause harmful interference to radio communications.

Operation of this equipment in a residential area is likely to cause harmful interference in which case the user will be required to correct the interference at his own expense.

However, there is no guarantee that interference will not occur in a particular installation. If this equipment does cause harmful interference to radio or television reception, which can be determined by turning the equipment off and on, the user is encouraged to try to correct the interference by one or more of the following measures:

- Reorient or relocate the receiving antenna.
- Increase the separation between the equipment and receiver.
- Connect the equipment into an outlet on a circuit different from that to which the receiver is connected.
- Consult the dealer or an experienced radio/TV technician for help.

Any changes or modifications not expressly approved by Motorola could void the user's authority to operate the equipment.

FCC RF Radiation Exposure Statement

This equipment complies with FCC radiation exposure limits set forth for an uncontrolled environment. This equipment should be installed and operated with minimum distance 2 meters between the radiator and your body.

Safety Information for the HOTZONE DUO Products

The Federal Communications Commission (FCC) with its action in ET Docket 96-8 has adopted a safety standard for human exposure to radio frequency (RF) electromagnetic energy emitted by FCC certified equipment. Motorola HOTZONE DUO products meet the uncontrolled environmental limits found in OET-65 and ANSI C95.1, 1991. Proper operation of this radio according to the instructions found in this manual and the hardware and software guides on the HOTZONE DUO CD will result in user exposure that is substantially below the FCC recommended limits.

- Do not touch or move the antenna(s) while the unit is transmitting or receiving.
- Do not hold any component containing a radio such that the antenna is very close to or touching any exposed parts of the body, especially the face or eyes, while transmitting.
- Do not operate a portable transmitter near unshielded blasting caps or in an explosive environment unless it is a type especially qualified for such use.
- Do not operate the radio or attempt to transmit data unless the antenna is connected; otherwise, the radio may be damaged.

Safety Certification



Conforms to UL STD ANSI/UL 60950 3rd Edition

Certified to CAN/CSA C22.2 NO. 60950-00

Equipment shall be suitable for use in Air pressure: 86kPa to106kPa.

Index

A

Alternate mounting hardware, 2-1
antenna, 2-1, 2-6, 2-7, 6-2

C

Connectivity Testing, 2-7
Copyrights, iii

D

Device Label, 2-3
Device Specifications, 1-3
Disclaimer, iii

E

Equipment Specification, 2-2
external connection points, 2-5

F

fixed **Infrastructure**, 1-2

I

Intelligent Access Point, 1-1

L

Label, IAP, 2-3
Label, MWR, 2-3
light poles, 2-1

M

Mesh Wireless Router, 1-1
mounting brackets, 2-1

P

power source, 2-1
professional, 2-5

S

software installation, 2-1

T

Technical Support, 5-1
Trademarks, iii

This page intentionally left blank.

Glossary

IAP – Intelligent Access Point

MiSC – Mobile Internet Switching Controller

MWR– Mesh Wireless Router

TFTP - Trivial File Transfer Protocol. A network utility that is simpler to use than the File Transfer Protocol (FTP).

WR – Wireless Router (same as MWR)

This page intentionally left blank.