

# HUAWEI WiFi WS5200

## Quick Start Guide



### Manage the router with our mobile app

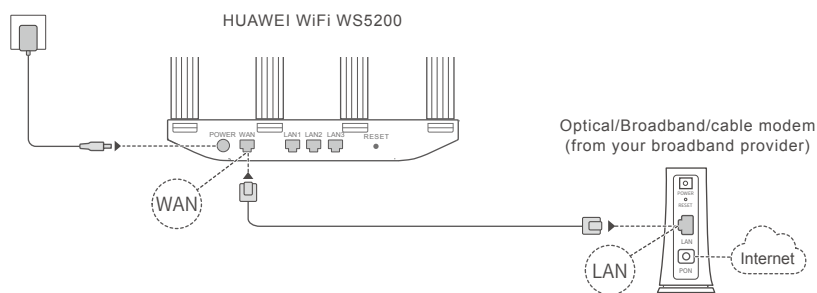


Scan the QR code, or search "HUAWEI SmartHome" in an app market. You can use HUAWEI SmartHome app to manage users, set timer and guest Wi-Fi, and control your router.



96725985\_01

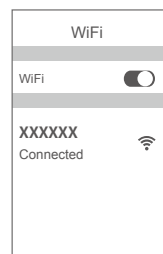
### Step 1: Connecting the cables



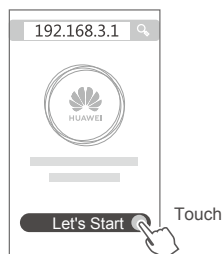
- Erect the all antennas upright to ensure optimized Wi-Fi® signal.
- If the indicator stays red, this indicates that the router is not connected to the Internet. Please refer to "Step 2: Configuring the network settings".

### Step 2: Configuring the network settings

- 1 **Connect your mobile phone or computer to the router's Wi-Fi network** (No password). Check for the Wi-Fi name on the bottom of the new router.

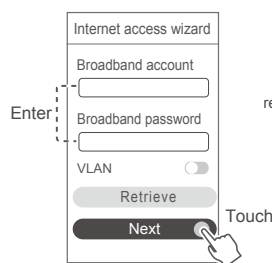


- 2 **Open the browser**, you will be automatically redirected. ( If the page is not displayed automatically, enter 192.168.3.1 ).



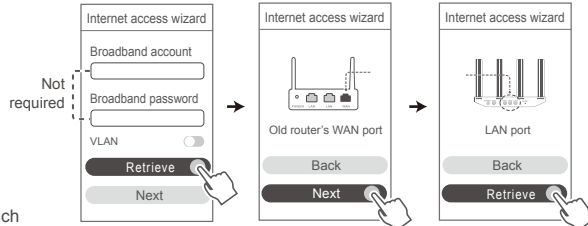
- 3 **If your Internet connection does not require an account and password:** Please skip to the next step.

If you remember your broadband account and password: enter your broadband account and password.



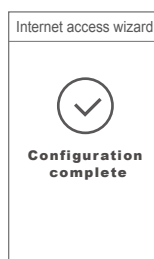
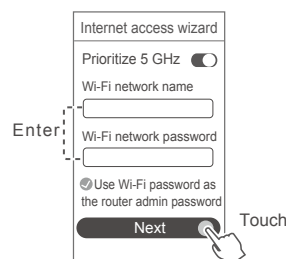
- If you need to configure VLAN on your network, contact your broadband carrier to confirm the VLAN parameters, and enable the VLAN switch on the screen.

If you have forgotten your broadband account and password: obtain the broadband account and password from the old router. Take another Ethernet cable and connect the WAN port of the old router to the LAN port of the new router.



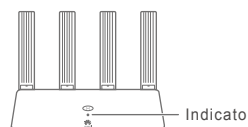
Or contact your broadband carrier to obtain a broadband account and password.

- 4 **Set a new Wi-Fi name, Wi-Fi password, and admin password for the new router.** You can use the Wi-Fi password as the router admin password.



- Enable **Prioritize 5 GHz**: Priority usage of 5 GHz Wi-Fi band over 2.4 GHz band when signal strength is equal to increase connection speeds.

### Indicator



<b>Steady green</b>	<b>Connected to the network</b>
<b>Steady red</b>	<b>Not connected to the network</b> <ul style="list-style-type: none"> <li>• Loose cable or connect error. Check the cable.</li> <li>• Broadband network error. Contact your broadband carrier.</li> </ul>
<b>Flashing</b>	<b>The router has detected a pairable device.</b> <p>When other HUAWEI routers (with H or Hi button) are detected, the indicator will flash. When this happens, press the router's H button. The indicator should flash quickly, indicating that the pairable device is connecting to the router's Wi-Fi. The connection process is complete when the indicator stops flashing.</p> <ul style="list-style-type: none"> <li>• If you touched the H button by accident, wait for 2 minutes till the indicator returns to normal.</li> <li>• The H button also features WPS functionality.</li> </ul>

### Frequently Asked Questions (FAQ)

#### Q1: What can I do if I encounter any of the following issues when configuring the router?

- A:**
- If your device did not detect the router's Wi-Fi: Ensure that the router is powered on. Wait for a moment (till the router is started) and try to search again on your device.
  - If you cannot visit the router's configuration page on your device: Ensure that your device is connected to the router's Wi-Fi network, and then enter 192.168.3.1 in the browser to visit this page on your device.
  - If the page displays "Cable disconnected": Ensure that the router's WAN port is connected to the modem's LAN port, and the modem has Internet access. Check that all joints are securely connected and in good contact, and the network cables are in good condition.
  - If the page displays "Account or password error": Please enter your broadband account and password again. If this still does not work, your broadband carrier may have bound the MAC address of your old router, causing your new router to be unable to connect. To fix this issue, select **Retrieve** and follow the onscreen prompts. Alternatively, contact your broadband carrier for assistance.
  - If the page displays "Failed to retrieve network settings from old router": Ensure that the router is connected to a power source, and that the old router's WAN port is already connected to the new router's LAN port. Restart your old router and then touch **Try again**.
- If the issue persists, restore the router to the factory settings, and follow the guide to reconnect the cables and configure the router.

#### Q2: What should I do if I forget my login password for the HUAWEI SmartHome app or the router's web-based management page?

- A:** Try using the router's Wi-Fi password to login. If the issue persists, restore the router to the factory settings.

#### Q3: How do I restore the router to its factory settings?

- A:** Connect the router to the power supply and wait until the router completes the startup process. Use a needle or pin to press the **RESET** button on the router for more than two seconds until the indicator light goes out. Wait for the router to complete the restart process. When the indicator turns red, this indicates that the router has been restored to its factory settings.
- If the router has been factory reset, you need to configure it again.

#### Q4: Does the router support 5 GHz Wi-Fi? How do I connect to the router's 5 GHz Wi-Fi?

- A:** 5 GHz Wi-Fi is supported. The Wi-Fi names for 2.4 GHz and 5 GHz are the same by default. You will be automatically connected to the faster Wi-Fi network. If you want to use 5 GHz Wi-Fi only, you can disable the Prioritize 5 GHz feature by performing the following steps:
- 1) Connect your phone to the router's Wi-Fi network.
  - 2) Enter 192.168.3.1 in your browser address bar and follow the onscreen instructions to log in.
  - 3) Select **My Wi-Fi** and disable **Prioritize 5 GHz**. You will now be able to find two Wi-Fi network names. Connect to the Wi-Fi network with "\_5G" at the end of its name.

#### Q5: How do I pair a Wi-Fi device with my router using WPS?

- A:** When your router is powered on, press its H button, and then press the WPS button on the Wi-Fi device (such as a phone) within two minutes, to initiate standard WPS negotiation and incorporate the Wi-Fi devices into the router's Wi-Fi network.

# Safety Information

## Safety information

This section contains important information about the operation of your device. It also contains information about how to use the device safely. Read this information carefully before using your device.

### Electronic device

Do not use your device if using the device is prohibited. Do not use the device if doing so causes danger or interference with other electronic devices.

### Interference with medical equipment

- Follow rules and regulations set forth by hospitals and health care facilities. Do not use your device where prohibited.
- Some wireless devices may affect the performance of hearing aids or pacemakers. Consult your service provider for more information.
- Pacemaker manufacturers recommend that a minimum distance of 15 cm be maintained between a device and a pacemaker to prevent potential interference with the pacemaker. If using a pacemaker, hold the device on the side opposite the pacemaker and do not carry the device in your front pocket.

### Areas with flammables and explosives

- Do not use the device where flammables or explosives are stored (in a gas station, oil depot, or chemical plant, for example).
- Using your device in these environments increases the risk of explosion or fire. In addition, follow the instructions indicated in text or symbols.
- Do not store or transport the device in containers with flammable liquids, gases, or explosives.

### Operating environment

- Avoid dusty, damp, or dirty environments. Avoid magnetic fields. Using the device in these environments may result in circuit malfunctions.
- Before connecting and disconnecting cables, stop using the device and disconnect it from the power supply. Ensure that your hands are dry during operation.
- Place the device on a stable surface.
- Keep the device away from electronic appliances that generate strong magnetic or electric fields, such as a microwave oven or refrigerator.
- During thunderstorms, power off your device and remove all cables connected to it to protect against lightning strikes.
- Do not use your device during thunderstorms to protect your device against any danger caused by lightning.
- Ideal operating temperatures are 0°C to 40°C. Ideal storage temperatures are -40°C to +70°C. Extreme heat or cold may damage your device or accessories.
- Keep the device and accessories in a well-ventilated and cool area away from direct sunlight. Do not enclose or cover your device with towels or other objects. Do not place the device in a container with poor heat dissipation, such as a box or bag.
- To protect your device or accessories from fire or electrical shock hazards, avoid rain and moisture.
- Keep the device away from sources of heat and fire, such as a heater, microwave oven, stove, water heater, radiator, or candle.
- Do not place any object, such as a candle or a water container, on the device. If any foreign object or liquid enters the device, immediately stop using it, power it off, and remove all cables connected to it. Then, contact an authorized service center.
- Do not block device openings. Reserve a minimum of 10 cm around the device to dissipate heat.
- Stop using your device or applications for a while if the device is overheated. If skin is exposed to an overheated device for an extended period, low temperature burn symptoms, such as red spots and darker pigmentation, may occur.
- Do not touch the device's antenna. Otherwise, communication quality may be reduced.
- Do not allow children or pets to bite or suck the device or accessories. Doing so may result in damage or explosion.
- Observe local laws and regulations, and respect the privacy and legal rights of others.
- The device should be installed and operated with a minimum distance of 20 cm between the radiator and your body.
- Keep the device in a place with good reception. The distance between the device and other metal materials (such as metal brackets or metal doors and windows) should be greater than 25 cm and the distance between the device should be greater than 30 cm.

### Child's safety

- Comply with all precautions with regard to child's safety. Letting children play with the device or its accessories may be dangerous. The device includes detachable parts that may present a choking hazard. Keep away from children.
- The device and its accessories are not intended for use by children. Children should only use the device with adult supervision.

### Accessories

- Using an unapproved or incompatible power adapter, charger or battery may cause fire, explosion or other hazards.
- Choose only accessories approved for use with this model by the device manufacturer. The use of any other types of accessories may void the warranty, may violate local regulations and laws, and may be dangerous. Please contact your retailer for information about the availability of approved accessories in your area.

### Power adapter safety

- The power plug is intended to serve as a disconnect device.
- For pluggable devices, the socket-outlet shall be installed near the devices and shall be easily accessible.
- Unplug the power adapter from electrical outlets and the device when not in use.
- Do not drop or cause an impact to the power adapter. If it is damaged, take it to an authorized service center for inspection.
- If the power cable is damaged (for example, the cord is exposed or broken), or the plug loosens, stop using it at once. Continued use may lead to electric shocks, short circuits, or fire.
- Do not touch the power cord with wet hands or pull the power cord to disconnect the power adapter.
- Do not touch the device or the power adapter with wet hands. Doing so may lead to short circuits, malfunctions, or electric shocks.
- If your power adapter has been exposed to water, other liquids, or excessive moisture, take it to an authorized service center for inspection.
- Ensure that the power adapter meets the requirements of Clause 2.5 in IEC60950-1/EN60950-1/UL60950-1 and has been tested and approved according to national or local standards.

### Cleaning and maintenance

- During storage, transportation, and operation of the device, keep it dry and protect it from collision.
- Keep the device and accessories dry. Do not attempt to dry it with an external heat source, such as a microwave oven or hair dryer.
- Do not expose your device or accessories to extreme heat or cold. These environments may interfere with proper function and may lead to fire or explosion.
- Avoid collision, which may lead to device malfunctions, overheating, fire, or explosion.
- If the device is not going to be used for an extended period of time, power it off, and remove all cables connected to it.
- If anything unusual occurs (for example, if the device emits smoke or any unusual sound or smell), immediately stop using it, power it off, remove all cables connected to it, and contact an authorized service center.
- Do not trample, pull, or excessively bend any cable. Doing so may damage the cable, causing the device to malfunction.
- Before you clean or maintain the device, stop using it, stop all applications, and disconnect all cables connected to it.
- Do not use any chemical detergent, powder, or other chemical agents (such as alcohol and benzene) to clean the device or accessories. These substances may cause damage to parts or present a fire hazard. Use a clean, soft, and dry cloth to clean the device and accessories.

- Do not place magnetic stripe cards, such as credit cards and phone cards, near the device for extended periods of time. Otherwise the magnetic stripe cards may be damaged.
- Do not dismantle or remanufacture the device and its accessories. This voids the warranty and releases the manufacturer from liability for damage. In case of damage, contact an authorized service center for assistance or repair.

### Environmental protection

- The device and its accessories (if included), such as the power adapter, headset, and battery should not be disposed of with household garbage.
- Disposal of the device and its accessories is subject to local regulations. Support proper collection and recycling.

### FCC Regulatory Compliance

#### FCC statement

This equipment has been tested and found to comply with the limits for a Class B digital device, pursuant to Part 15 of the FCC Rules. These limits are designed to provide reasonable protection against harmful interference in a residential installation. This equipment generates, uses and can radiate radio frequency energy and, if not installed and used in accordance with the instructions, may cause harmful interference to radio communications. However, there is no guarantee that interference will not occur in a particular installation. If this equipment does cause harmful interference to radio or television reception, which can be determined by turning the equipment off and on, the user is encouraged to try to correct the interference by one or more of the following measures:

--Reorient or relocate the receiving antenna.

--Increase the separation between the equipment and receiver.

--Connect the equipment into an outlet on a circuit different from that to which the receiver is connected.

--Consult the dealer or an experienced radio/TV technician for help.

This device complies with Part 15 of the FCC Rules. Operation is subject to the following two conditions: (1) this device may not cause harmful interference, and (2) this device must accept any interference received, including interference that may cause undesired operation.

**Caution:** Any changes or modifications to this device not expressly approved by Huawei Technologies Co., Ltd. for compliance could void the user's authority to operate the equipment.

#### Restrictions in the 5 GHz band:

Within the 5.15 to 5.25 GHz band, UNII devices will be restricted to indoor operations to reduce any potential for harmful interference to co-channel Mobile Satellite System (MSS) operations.

## Legal Notice

### Copyright © Huawei Technologies Co., Ltd. 2019. All rights reserved.

No part of this manual may be reproduced or transmitted in any form or by any means without prior written consent of Huawei Technologies Co., Ltd. and its affiliates ("Huawei").

The product described in this manual may include copyrighted software of Huawei and possible licensors. Customers shall not in any manner reproduce, distribute, modify, decompile, disassemble, decrypt, extract, reverse engineer, lease, assign, or sublicense the said software, unless such restrictions are prohibited by applicable laws or such actions are approved by respective copyright holders.

### Trademarks and Permissions



HUAWEI

HUAWEI

HUAWEI

HUAWEI

HUAWEI

HUAWEI

HUAWEI

HUAWEI

HUAWEI

HUAWEI

HUAWEI

HUAWEI

HUAWEI

HUAWEI

HUAWEI

HUAWEI

HUAWEI

HUAWEI

HUAWEI

HUAWEI

HUAWEI

HUAWEI

HUAWEI

HUAWEI

HUAWEI

HUAWEI

HUAWEI

HUAWEI

HUAWEI

HUAWEI

HUAWEI

HUAWEI

HUAWEI

HUAWEI

HUAWEI

HUAWEI

HUAWEI

HUAWEI

HUAWEI

HUAWEI

HUAWEI

HUAWEI

HUAWEI

HUAWEI

HUAWEI

HUAWEI

HUAWEI

HUAWEI

HUAWEI

HUAWEI

HUAWEI

HUAWEI

HUAWEI

HUAWEI

HUAWEI

HUAWEI

HUAWEI

HUAWEI

HUAWEI

HUAWEI

HUAWEI

HUAWEI

HUAWEI

HUAWEI

HUAWEI

HUAWEI

HUAWEI

HUAWEI

HUAWEI

HUAWEI

HUAWEI

HUAWEI