

WS319 300Mbps Wireless Router Quick Start



2 Building a network connection with computer

Before configuring the router, you need to build the network connection between this device and the router.

Wired connection applies to the computers without wireless network adapter. **Wireless connection** applies to the devices supporting wireless Internet access, such as smart phone and tablet.

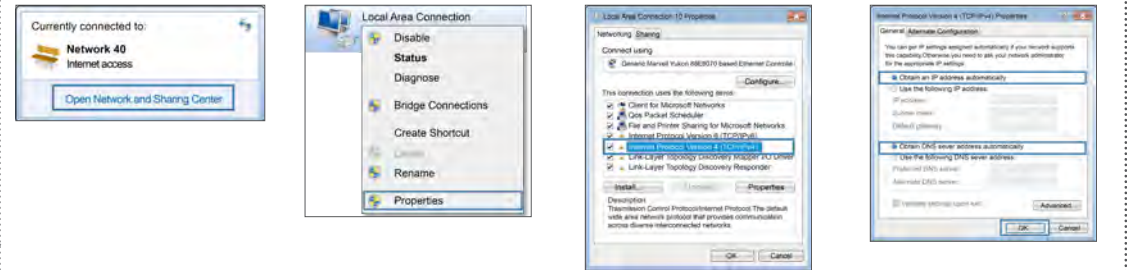
Mode I Wired connection



Setting the Computer IP Address

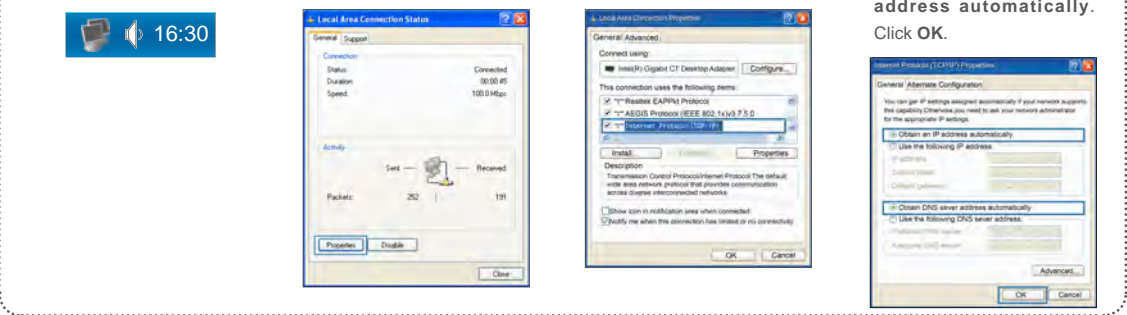
Procedure on Computers Running Windows 7.

1. Click in the lower right corner of your desktop, choose **Open Network and Sharing Center**.
2. Choose **Change adapter settings**. Right-click **Local Area Connection** and choose **Properties**.
3. Double-click **Internet Protocol Version 4 (TCP/IPv4)**.
4. Select **Obtain an IP address automatically** and **Obtain DNS server address automatically**. Click **OK**.



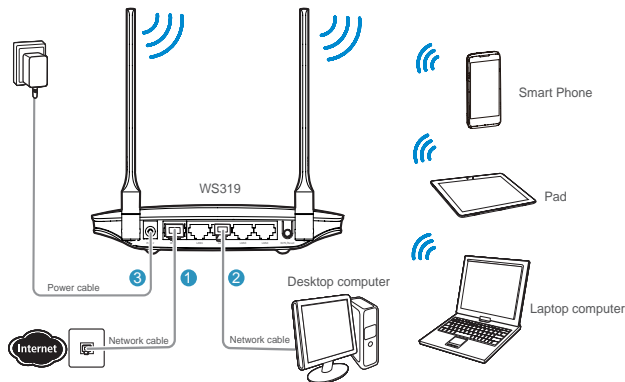
Procedure on Computers Running Windows XP.

1. Click in the lower right corner of your desktop.
2. In the displayed dialog box, click **Properties**.
3. Double-click **Internet Protocol (TCP/IP)**.
4. Select **Obtain an IP address automatically** and **Obtain DNS server address automatically**. Click **OK**.



1 Connecting Devices

Connect your devices in the sequence indicated in the following figure.



Connect the cables as shown in the figure above, and plug the power adapter into the wall-mounted power outlet to power on the WS319. After the WS319 is powered on, the WS319 power indicator turns on. The following table lists how the indicators behave when the WS319 is operating correctly. If the indicators do not behave as expected, ensure that everything is plugged in correctly.

Indicator	Working
Power	Steady on
Internet	Steady on
WLAN	Steady on
WPS	Steady off
LAN	Steady on (A LAN port is connected to a computer or other Ethernet device through a network cable.)

Mode II Wireless connection



Please ensure that your computer has installed and enabled the wireless network adapter.

Wireless Connection Setup

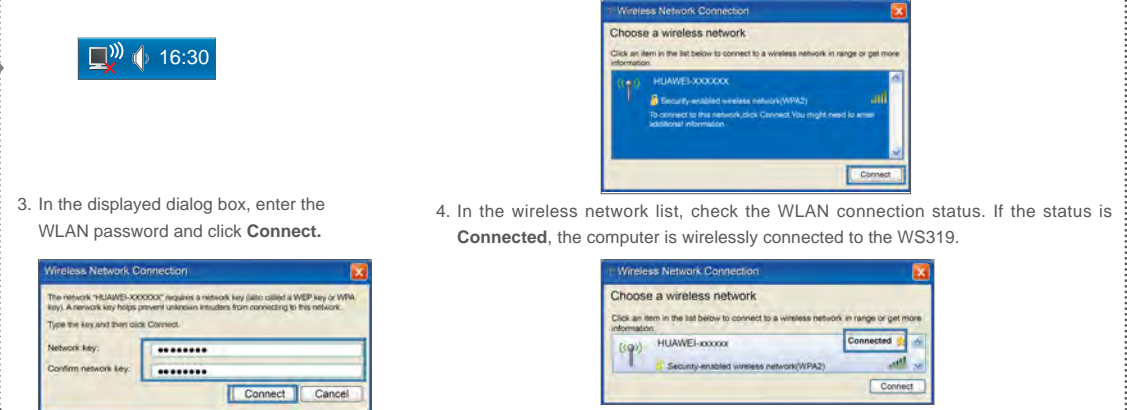
Procedure on Computers Running Windows 7

1. Click in the lower right corner of your desktop.
2. From the wireless network list, select the WLAN provided by the WS319. Click **Connect**.
3. In the displayed dialog box, enter the WLAN password and click **OK**.
4. In the wireless network list, check the WLAN connection status. If the status is **Connected**, the computer is wirelessly connected to the WS319.



Procedure on Computers Running Windows XP.

1. Click in the lower right corner of your desktop.
2. From the wireless network list, select the WLAN provided by the WS319. Click **Connect**.
3. In the displayed dialog box, enter the WLAN password and click **Connect**.
4. In the wireless network list, check the WLAN connection status. If the status is **Connected**, the computer is wirelessly connected to the WS319.



If the wireless device (laptop, tablet, or mobile phone) has been WPS-capable, you can use the WPS-capable to establish a wireless connection between them. For more help, visit <http://consumer.huawei.com/en/> to obtain the WS319 user guide.

For More Help
Please visit www.huaweidevice.com/worldwide/support/hotline for recently updated hotline and email address in your country or region.

Copyright © Huawei Technologies Co., Ltd. 2014. All rights reserved.

THIS DOCUMENT IS FOR INFORMATION PURPOSE ONLY, AND DOES NOT CONSTITUTE ANY KIND OF WARRANTIES.

Privacy Policy
To better understand how we protect your personal information, please see the privacy policy at <http://consumer.huawei.com/privacy-policy>.



3 Quick Setup

1. Open a browser. In the address box, enter <http://mediarouter.home>. Press **Enter**.
2. Enter the login password (**admin** by default). Click **Login**.

3. The setup wizard will automatically be displayed the first time



i To protect against unauthorized access, change your password after the first login.

you log in to the WS319. Select a network connection type, set the Internet connection parameters, and click **Next**.

4. Click **Next**, set WLAN parameters.

Recommended to choose Connect automatically. You can also refer to the following table to configure the network connection.

Scenario	Connection Type
The account name and password are provided by your Internet Service Provider (ISP).	Connect with user account
No parameter is provided by your ISP. The IP address is automatically assigned by the ISP.	Connect without user account
The account name and password are provided by your ISP, and you want to set up a dial-up connection on one computer only.	Connect with another modem

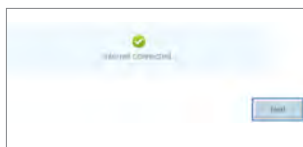
> If you selected Connect with user account enter the parameters provided by your Internet Service Provider (ISP) and click **Next**.



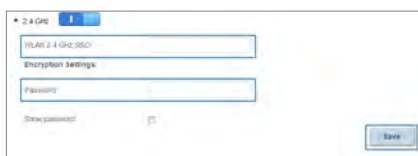
> If you selected **Connect without user account** or **Connect with another modem**, click **Next**.



5. In **WLAN 2.4 GHz SSID** and **Password**, the SSID (WLAN



name) and key you specified, and then click **Save**.



i > To protect your wireless network from unauthorized access, change the password promptly after setup.
> After the SSID and password had been changed, your computer should use the new ones to establish a wireless connection to the WS319.

4 FAQs

Q: What Can I Do If I Cannot Open the Web Management Page?

A: Perform the following steps:

1. Check that the cables are securely connected to the WS319 and that the LAN port's indicator is on.
 2. Open Internet Explorer. Choose **Tools > Internet Options > Connections > LAN settings**, and ensure that all check boxes are deselected.
- If the problem persists, restore the WS319 to its default settings.

5 Appendix (Indicators and Buttons)

Indicator	Expected State
Power	<ul style="list-style-type: none">• Steady off (WS319 is powered off.)• Steady on (WS319 is powered on.)
Internet	<ul style="list-style-type: none">• Steady on (The WS319 is connected to the Internet.)• Steady off (The WS319 WAN port is not connected to any device.)
WLAN	<ul style="list-style-type: none">• Steady on (WLAN is enabled.)• Steady off (WLAN is disabled.)
WPS	<ul style="list-style-type: none">• Steady on (WS319 is connected to a wireless client, such as a computer with a wireless network adapter, over the WLAN using the Wi-Fi Protected Setup (WPS) function. The WPS indicator is steady on for 300 seconds.)• Blinking (WS319 is attempting to connect to a wireless client over the WLAN using the WPS function. The WPS indicator blinks for 120 seconds or less.)• Steady off (WPS is disabled)
LAN	<ul style="list-style-type: none">• Steady on (A LAN port is connected to a computer or other Ethernet device through a network cable.)• Steady off (No LAN port is connected to a computer or other Ethernet device.)
WPS/Reset	<ul style="list-style-type: none">• When the WS319 is powered on, Press to start Wi-Fi protected setup (WPS) negotiation.• When the WS319 is powered on, Press it (more than 6 seconds). The WS319 will restore to its default settings.

6 Safety Information

This section contains important information about the operation of your device. It also contains information about how to use the device safely. Read this information carefully before using your device.

Electronic device

Do not use your device if using the device is prohibited. Do not use the device if doing so causes danger or interference with other electronic devices.

Interference with medical equipment

- > Follow rules and regulations set forth by hospitals and health care facilities. Do not use your device where prohibited.
- > Some wireless devices may affect the performance of hearing aids or pacemakers. Consult your service provider for more information.
- > Pacemaker manufacturers recommend that a minimum distance of 15cm be maintained between a device and a pacemaker to prevent potential interference with the pacemaker. If using a pacemaker, hold the device on the side opposite the pacemaker and do not carry the device in your front pocket.

Areas with flammables and explosives

- > Do not use the device where flammables or explosives are stored (in a gas station, oil depot, or chemical plant, for example). Using your device in these environments increases the risk of explosion or fire. In addition, follow the instructions indicated in text or symbols.
- > Do not store or transport the device in containers with flammable liquids, gases, or explosives.

Operating environment

- > Avoid dusty, damp, or dirty environments. Avoid magnetic fields. Using the device in these environments may result in circuit malfunctions.
- > Before connecting and disconnecting cables, stop using the device and disconnect it from the power supply. Ensure that your hands are dry during operation.
- > Place the device on a stable surface.
- > Keep the device away from electronic appliances that generate strong magnetic or electric fields, such as a microwave oven or refrigerator.
- > During thunderstorms, power off your device and remove all cables connected to it to protect against lightning strikes.
- > Do not use your device during thunderstorms to protect your device against any danger caused by lightning.
- > Ideal operating temperatures are 0°C to 40°C. Extreme heat or cold may damage your device or accessories.
- > Keep the device and accessories in a well-ventilated and cool area away from direct sunlight. Do not enclose or cover your device with towels or other objects. Do not place the device in a container with poor heat dissipation, such as a box or bag.
- > To protect your device or accessories from fire or electrical shock hazards, avoid rain and moisture.
- > Keep the device away from sources of heat and fire, such as a heater, microwave oven, stove, water heater, radiator, or candle.
- > Do not place any object, such as a candle or a water container, on the device. If any foreign object or liquid enters the device, immediately stop using it, power it off, and remove all cables connected to it. Then, contact an authorized service center.
- > Do not block device openings. Reserve a minimum of 10 cm around the device to dissipate heat.
- > Stop using your device or applications for a while if the device is overheated. If skin is exposed to an overheated device for an extended period, low temperature burn symptoms, such as red spots and darker pigmentation, may occur.
- > Do not touch the device's antenna. Otherwise, communication quality may be reduced.
- > Do not allow children or pets to bite or suck the device or accessories. Doing so may result in damage or explosion.
- > The device should be installed and operated with a minimum distance of 20cm between the radiator and your body.
- > Keep the device in a place with good reception. The distance between the device and other metal materials (such as metal brackets or metal doors and windows) should be greater than 25cm and the distance between the device should be greater than 30cm.

Child's safety

Comply with all precautions with regard to child's safety. Letting children play with the device or its accessories may be dangerous. The device includes detachable parts that may present a choking hazard. Keep away from children.

Accessories

- > Using an unapproved or incompatible power adapter, charger or battery may cause fire, explosion or other hazards.
- > Choose only accessories approved for use with this model by the device manufacturer. The use of any other types of accessories may void the warranty, may violate local regulations and laws, and may be dangerous. Please contact your retailer for information about the availability of approved accessories in your area.

Power adapter safety

- > The power plug is intended to serve as a disconnect device.
- > For pluggable devices, the socket-outlet shall be installed near the devices and shall be easily accessible.
- > Unplug the power adapter from electrical outlets and the device when not in use.
- > Do not drop or cause an impact to the power adapter. If it is damaged, take it to an authorized service center for inspection.
- > If the power cable is damaged (for example, the cord is exposed or broken), or the plug loosens, stop using it at once. Continued use may lead to electric shocks, short circuits, or fire.
- > If your device has been exposed to water, other liquids, or excessive moisture, take it to an authorized service center for inspection.
- > Ensure that the power adapter meets the requirements of Clause 2.5 in IEC60950-1/EN60950-1 and has been tested and approved according to national or local standards.

Cleaning and maintenance

- > During storage, transportation, and operation of the device, keep it dry and protect it from collision.
- > If the device is not going to be used for an extended period of time, power it off, and remove all cables connected to it.
- > If anything unusual occurs (for example, if the device emits smoke or any unusual sound or smell), immediately stop using it, power it off, remove all cables connected to it, and contact an authorized service center.
- > Do not trample, pull, or excessively bend any cable. Doing so may damage the cable, causing the device to malfunction.
- > Before you clean or maintain the device, stop using it, stop all applications, and disconnect all cables connected to it.
- > Do not use any chemical detergent, powder, or other chemical agents (such as alcohol and benzene) to clean the device or accessories. These substances may cause damage to parts or present a fire hazard. Use a clean, soft, and dry cloth to clean the device and accessories.
- > Keep the device and accessories dry. Do not attempt to dry it with an external heat source, such as a microwave oven or hair dryer.
- > Avoid collision, which may lead to device malfunctions, overheating, fire, or explosion.
- > Do not expose your device or accessories to extreme heat or cold. These environments may interfere with proper function and may lead to fire or explosion.
- > Do not place magnetic stripe cards, such as credit cards and phone cards, near the device for extended periods of time. Otherwise the magnetic stripe cards may be damaged.
- > Do not dismantle or remanufacture the device and its accessories. In case of damage, contact an authorized service center for assistance or repair.

Disposal and recycling information



This symbol (with or without a solid bar) on the device, batteries (if included), and/or the packaging, indicates that the device and its electrical accessories (for example, a headset, adapter, or cable) and batteries should not be disposed of as household garbage. These items should not be disposed of as unsorted municipal waste and should be taken to a certified collection point for recycling or proper disposal.

For more detailed information about device or battery recycling, contact your local city office, household waste disposal service, or retail store.

Disposal of the device and batteries (if included) is subject to WEEE Directive Recast (Directive 2012/19/EU) and Battery Directive (Directive 2006/66/EC). The purpose of separating WEEE and batteries from other waste is to minimize the potential environmental impacts and human health risk of any hazardous substances that may be present.

Reduction of hazardous substances

This device is compliant with the REACH Regulation [Regulation (EC) No 1907/2006] and RoHS Directive Recast (Directive 2011/65/EU). Batteries (if included) are compliant with the Battery Directive (Directive 2006/66/EC). For up-to-date information about REACH and RoHS compliance, please visit the web site www.huaweidevice.com/certification.

EU regulatory conformance

Hereby, Huawei Technologies Co., Ltd. declares that this device is in compliance with the essential requirements and other relevant provisions of Directive 1999/5/EC.

For the declaration of conformity, visit the web site www.huaweidevice.com/certification.

The following marking is included in the product:

CE 0678

This device may be operated in all member states of the EU. Observe national and local regulations where the device is used. This device may be restricted for use, depending on the local network.

Restrictions in the 2.4 GHz band:

Norway: This subsection does not apply to the geographical area within a radius of 20 km from the centre of Ny-Ålesund.

FCC Regulatory Compliance

This equipment has been tested and found to comply with the limits for a Class B digital device, pursuant to Part 15 of the FCC Rules. These limits are designed to provide reasonable protection against harmful interference in a residential installation. This equipment generates, uses and can radiate radio frequency energy and, if not installed and used in accordance with the instructions, may cause harmful interference to radio communications. However, there is no guarantee that interference will not occur in a particular installation. If this equipment does cause harmful interference to radio or television reception, which can be determined by turning the equipment off and on, the user is encouraged to try to correct the interference by one or more of the following measures:

- Reorient or relocate the receiving antenna.
 - Increase the separation between the equipment and receiver.
 - Connect the equipment into an outlet on a circuit different from that to which the receiver is connected.
 - Consult the dealer or an experienced radio/TV technician for help.
- This device complies with FCC radiation exposure limits set forth for an uncontrolled environment and it also complies with Part 15 of the FCC RF Rules.

This device complies with Part 15 of the FCC Rules. Operation is subject to the following two conditions: (1) this device may not cause harmful interference, and (2) this device must accept any interference received, including interference that may cause undesired operation.

Caution: Any changes or modifications to this device not expressly approved by Huawei Technologies Co., Ltd. for compliance could void the user's authority to operate the equipment.