

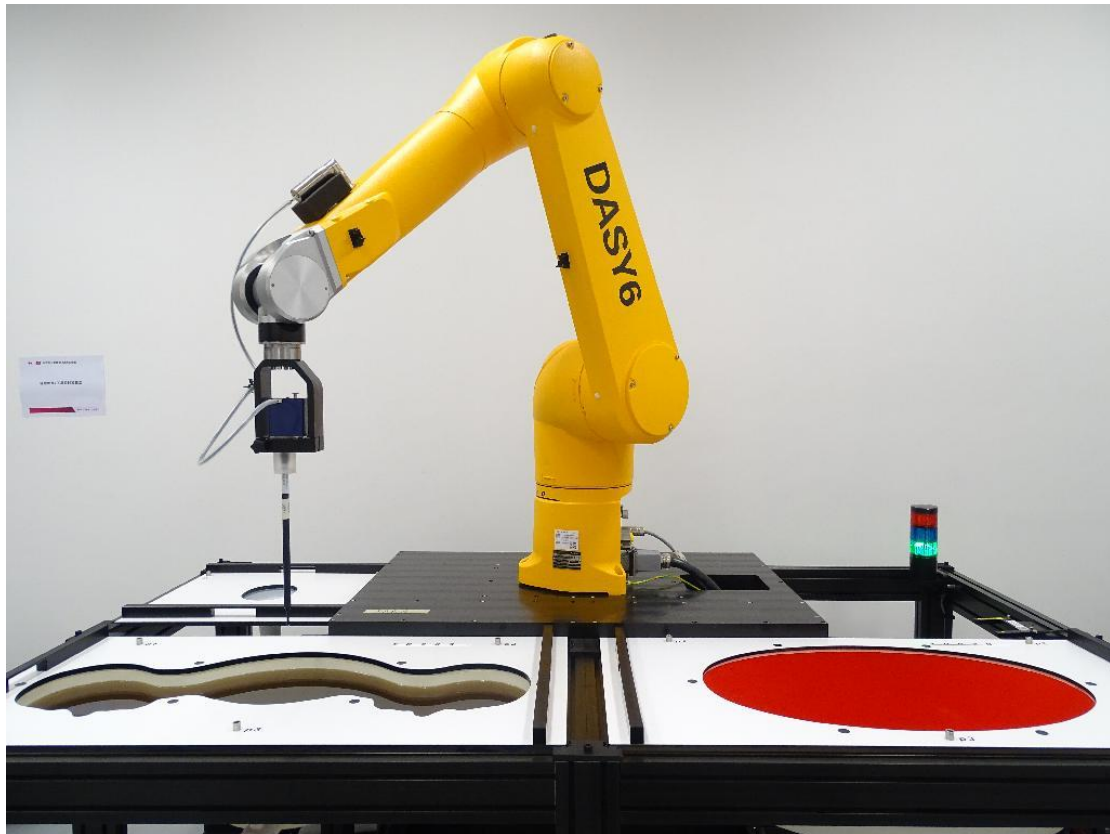


Appendix D. Photo documentation

Table of contents
Test Facility
Test Positions
Liquid depth

Test Facility

Photo 1: Measurement System DASy



Test Positions

Photo 2: Front View



Photo 3: Back View



Photo 4: The audio receiver position



Photo 5: The best acoustic position

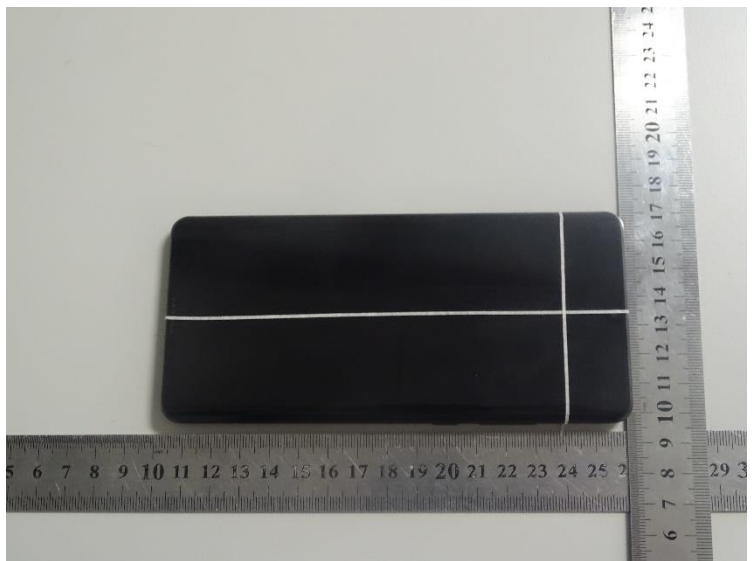


Photo 6: Left Cheek

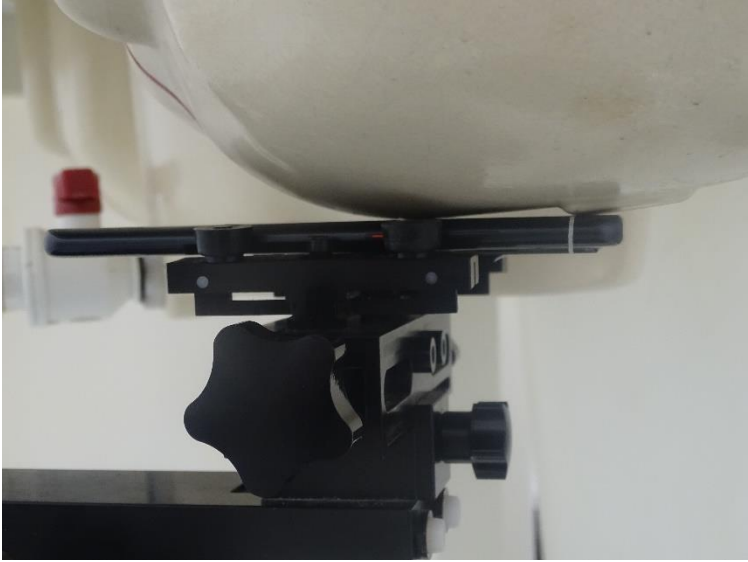


Photo 7: Left Tilt



Photo 8: Right Cheek

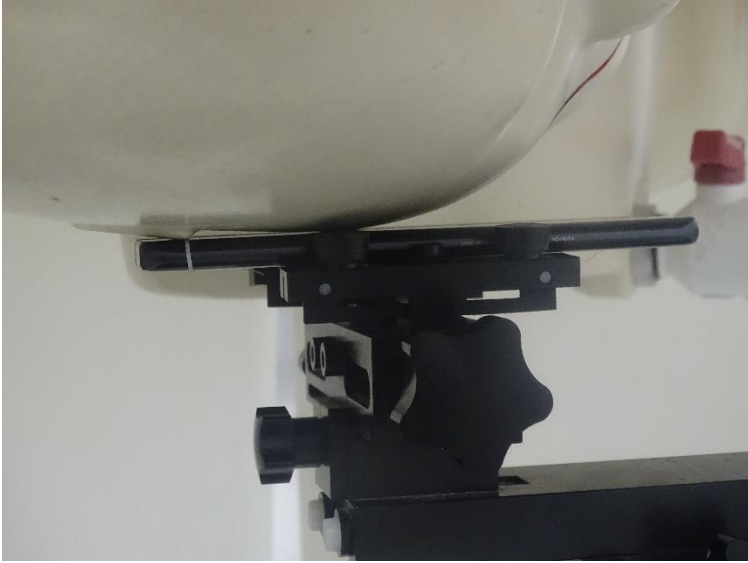


Photo 9: Right Tilt



Photo 10: Left Cheek at the best acoustic position

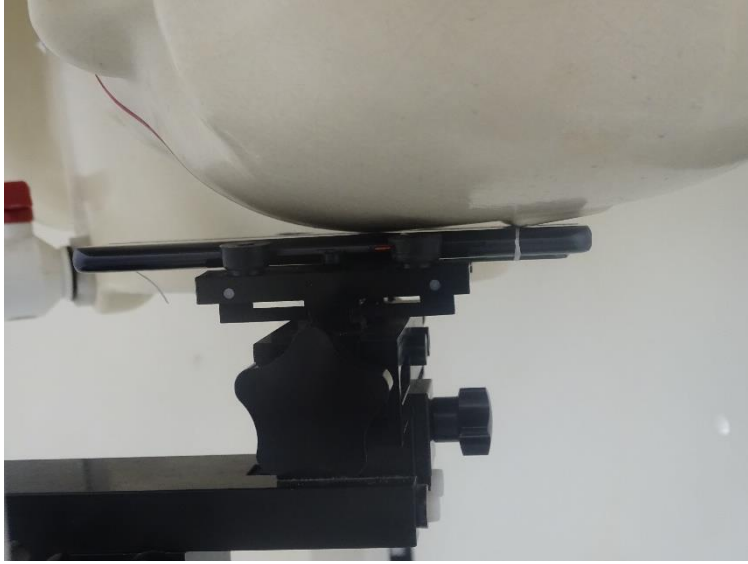


Photo 11: Left Tilt at the best acoustic position

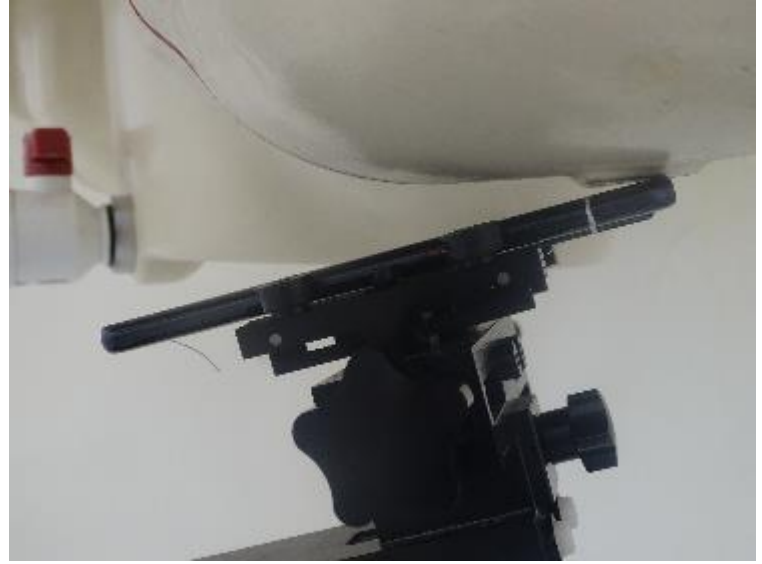


Photo 12: Right Cheek at the best acoustic position

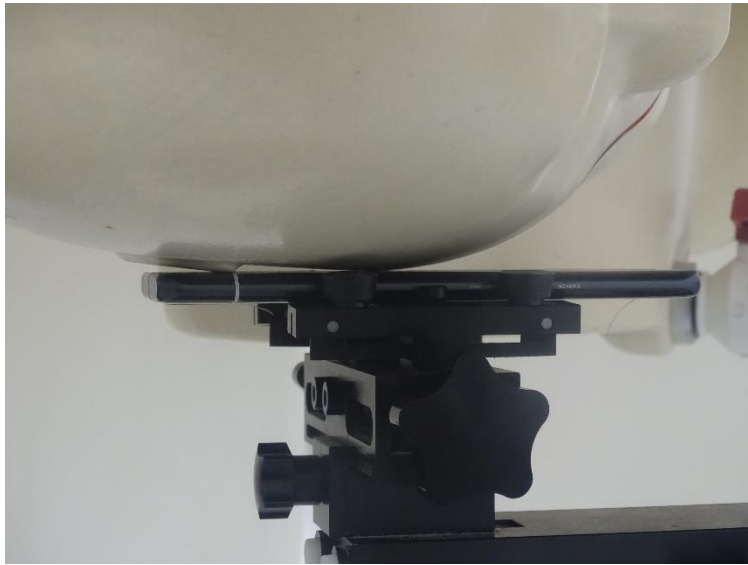


Photo 13: Right Tilt at the best acoustic position



Photo 14: Front Side 15mm



Photo 15: Back Side 15mm



Photo 16: Front Side 10mm



Photo 17: Back Side 10mm

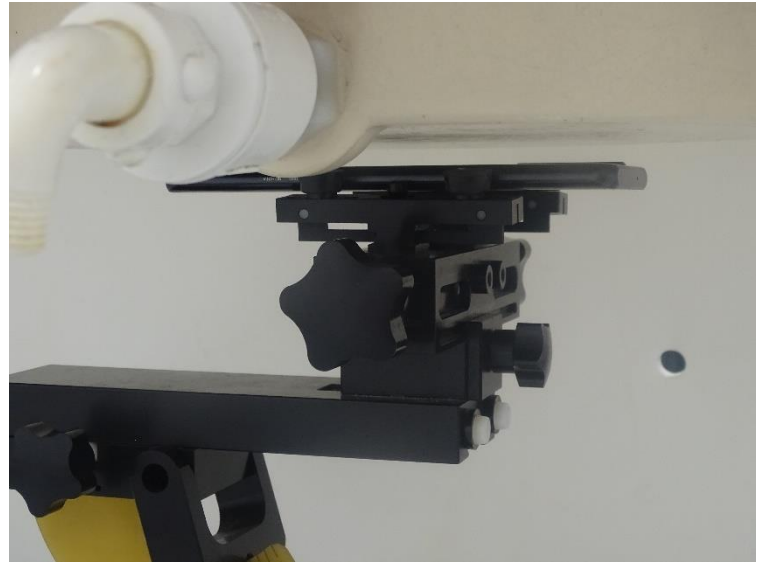


Photo 18: Left Side 10mm



Photo 19: Right Side 10mm



Photo 20: Top Side 10mm



Photo 21: Bottom Side 10mm



Photo 22: Front Side 0mm



Photo 23: Back Side 0mm

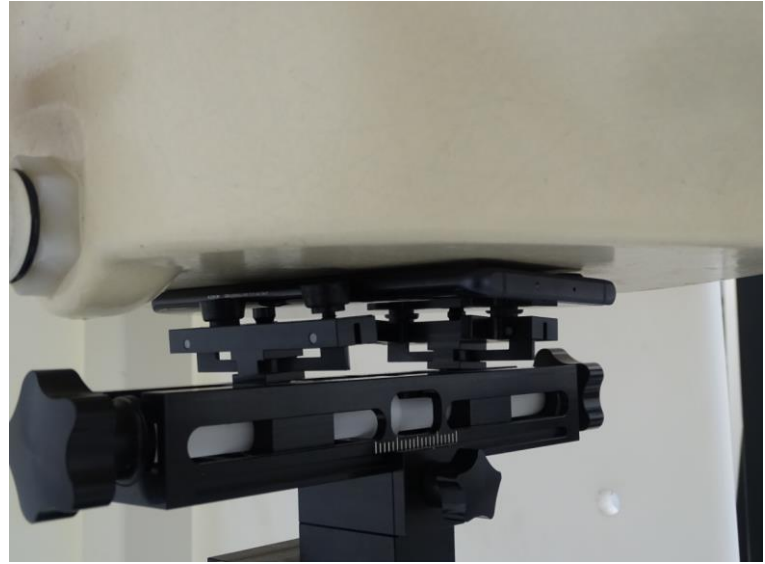


Photo 24: Left Side 0mm



Photo 25: Right Side 0mm



Photo 26: Top Side 0mm



Photo 27: Bottom Side 0mm

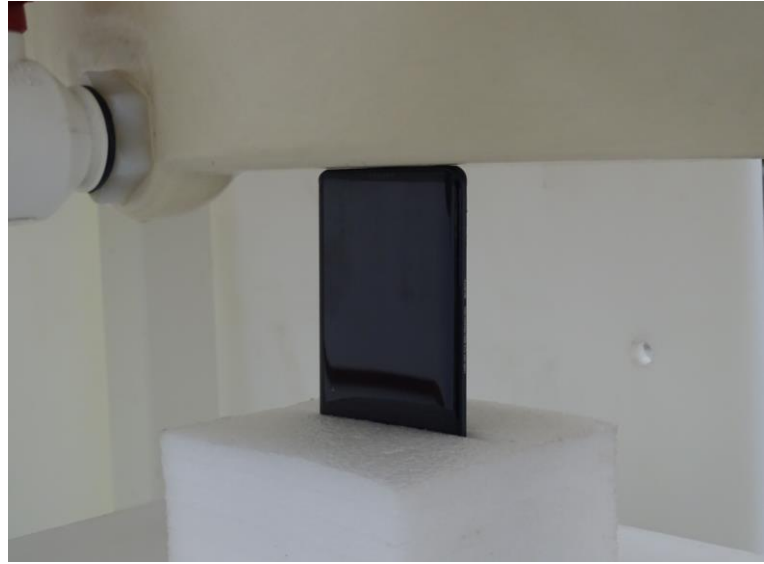
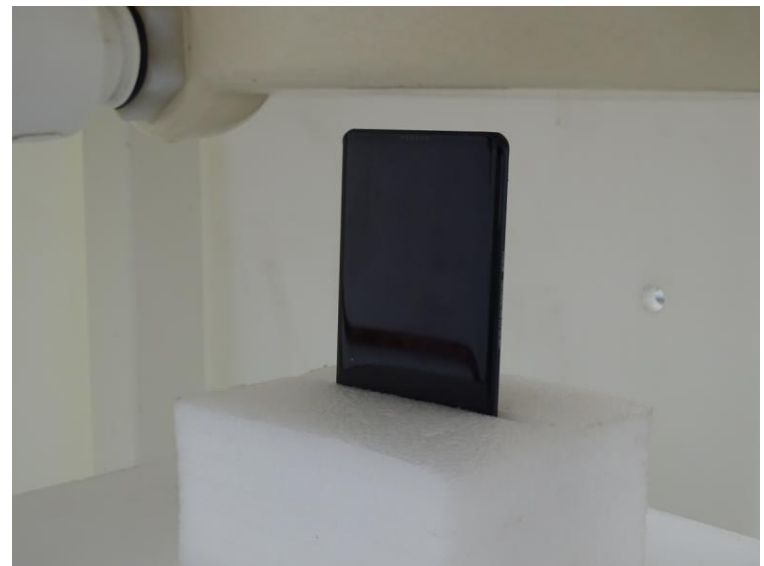


Photo 28: Bottom Side 7mm



Photo 29: Bottom Side 12mm



Liquid depth

Photo 30: HBBL600-6000MHz Depth (15.1cm)

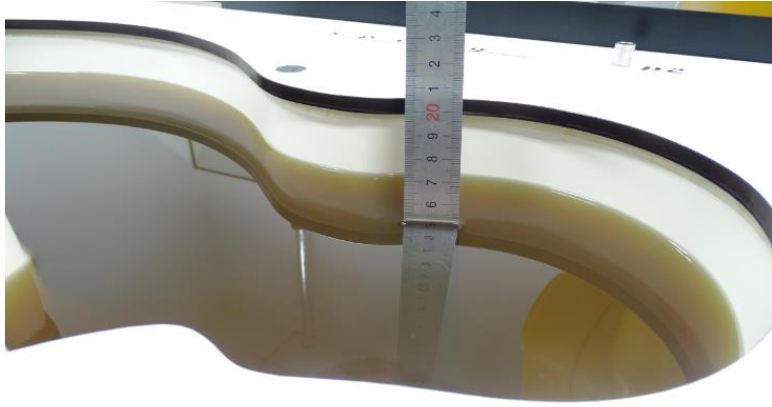


Photo 31: MBBL600-6000MHz Depth (15.2cm)

