

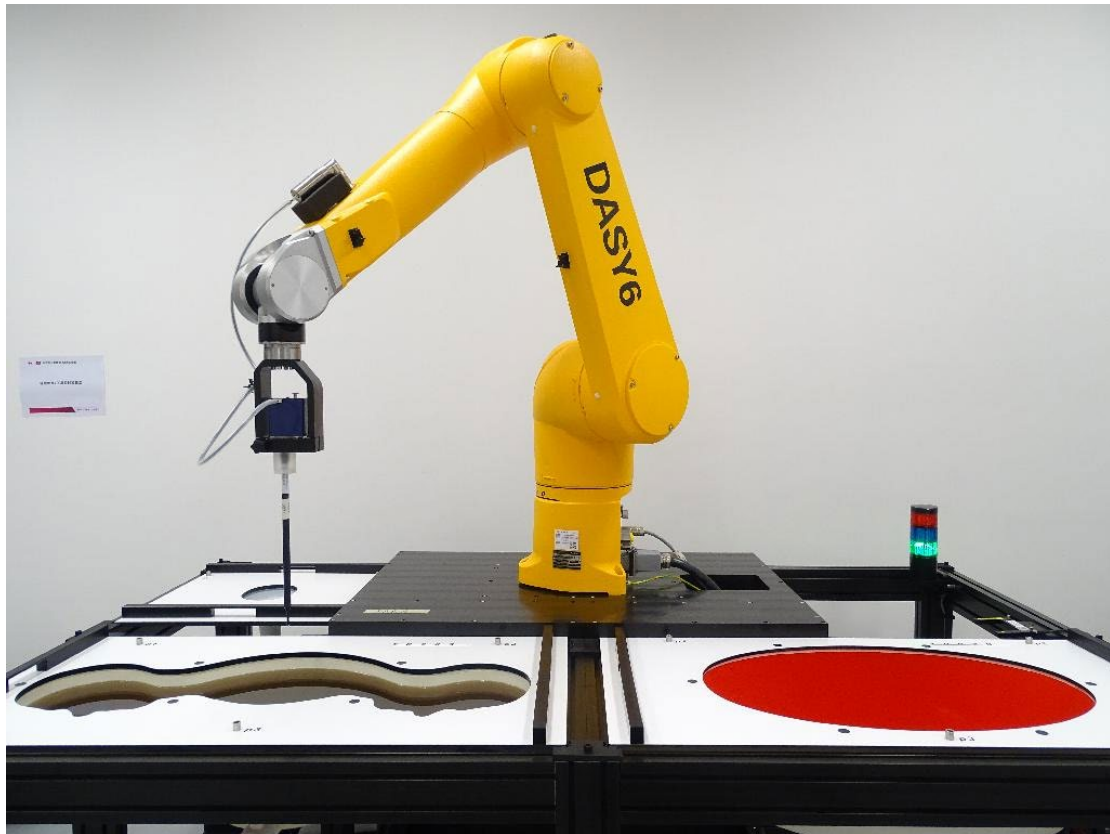


Appendix D. Photo documentation

| Table of contents |
|--------------------------|
| Test Facility |
| Test Positions |
| Liquid depth |

Test Facility

Photo 1: Measurement System DASY



Test Positions

Photo 2: Front View



Photo 3: Back View



Photo 4: The audio receiver position

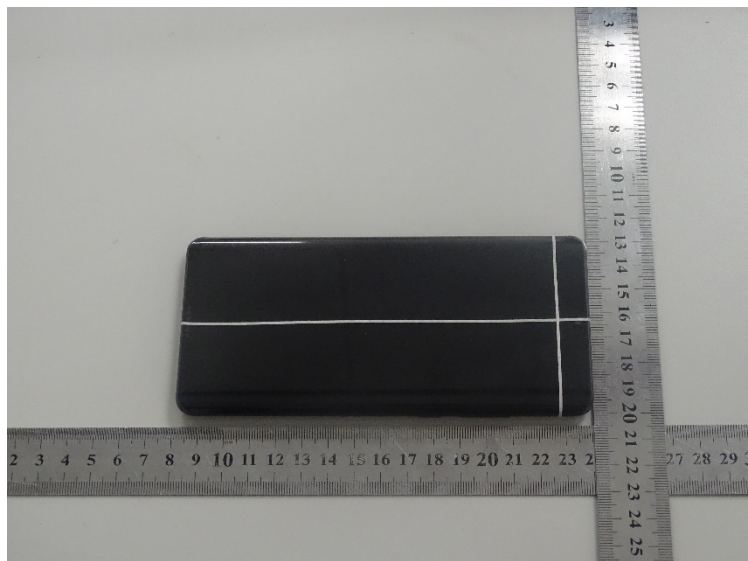


Photo 5: The best acoustic position

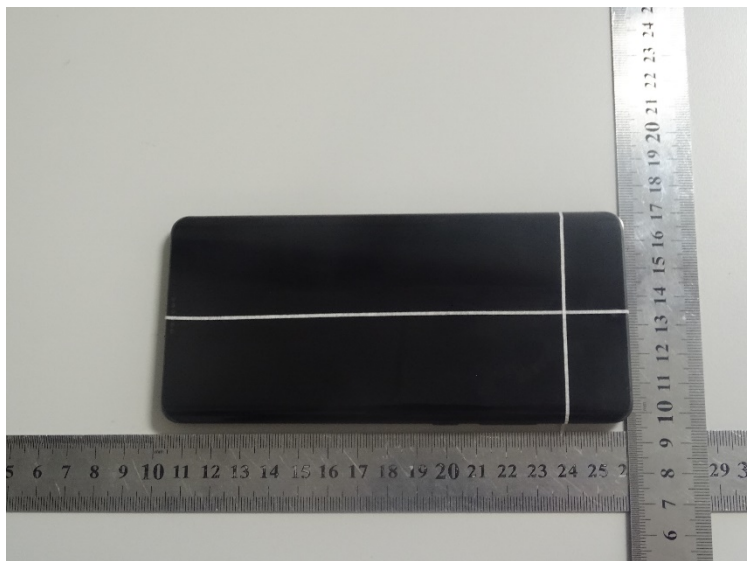


Photo 6: Left Cheek

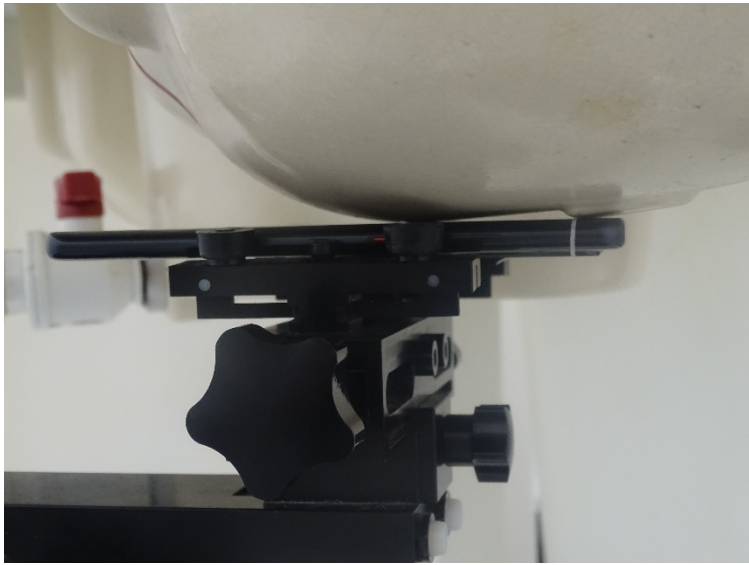


Photo 7: Left Tilt

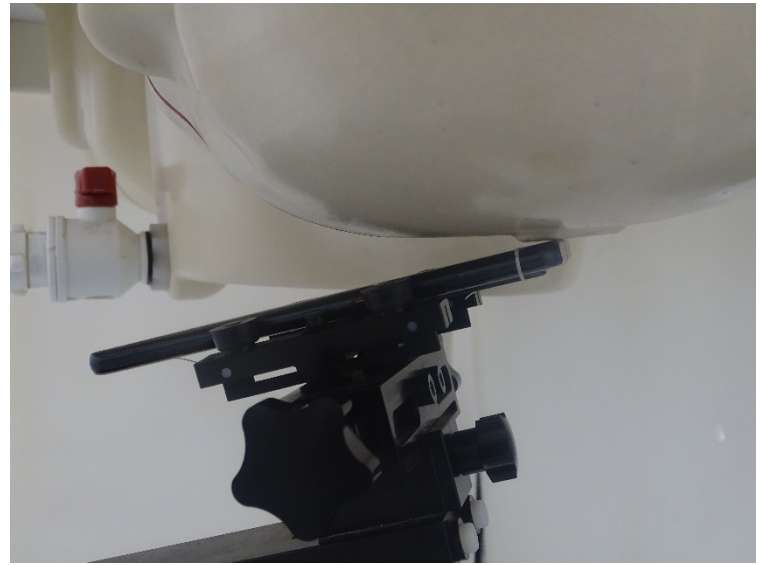


Photo 8: Right Cheek

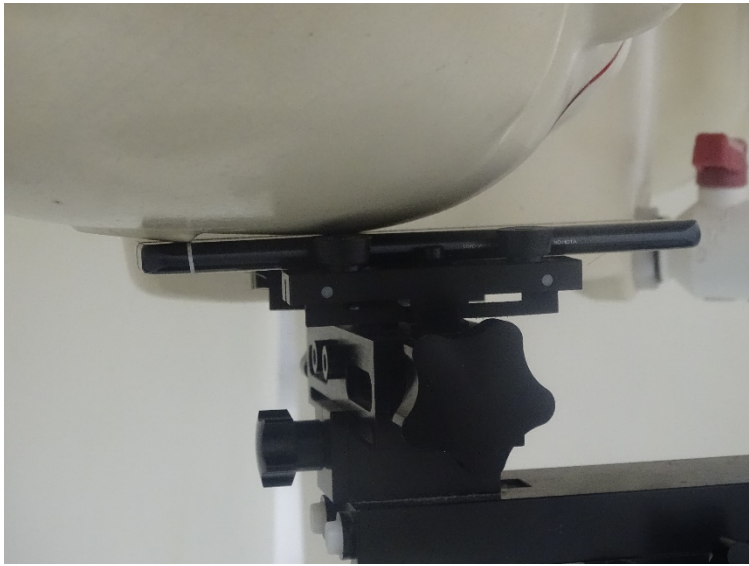


Photo 9: Right Tilt



Photo 10: Left Cheek at the best acoustic position

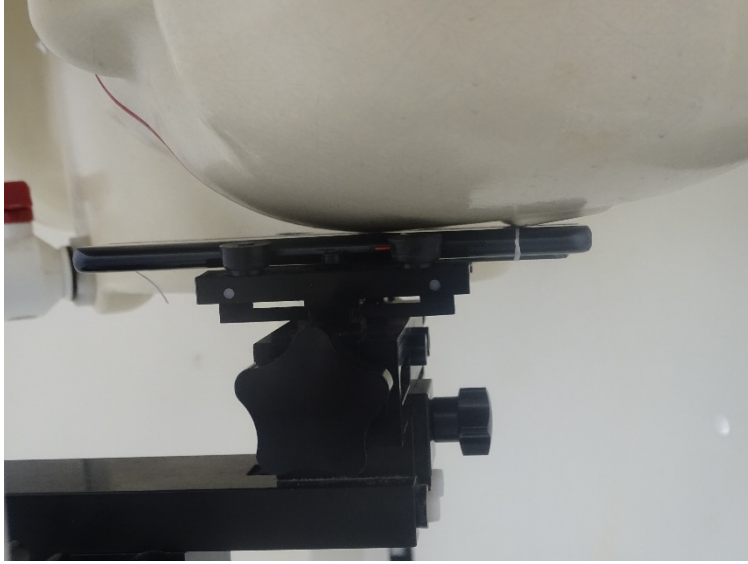


Photo 11: Left Tilt at the best acoustic position

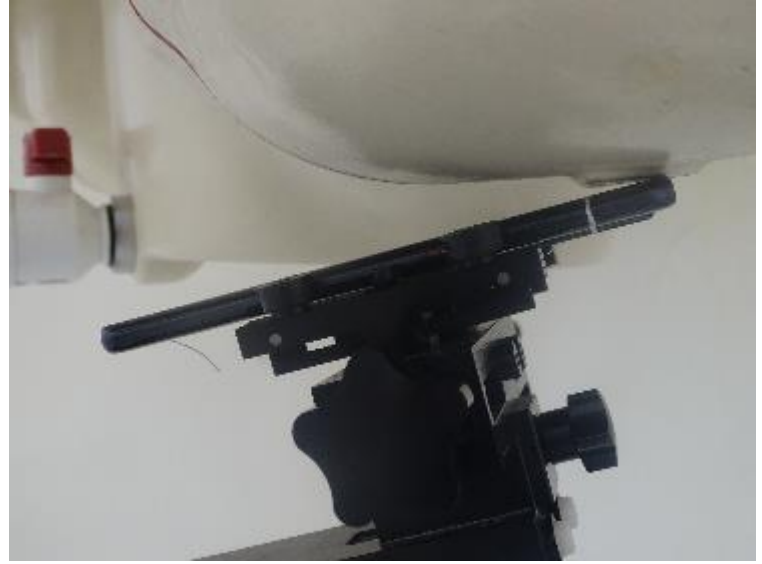


Photo 12: Right Cheek at the best acoustic position

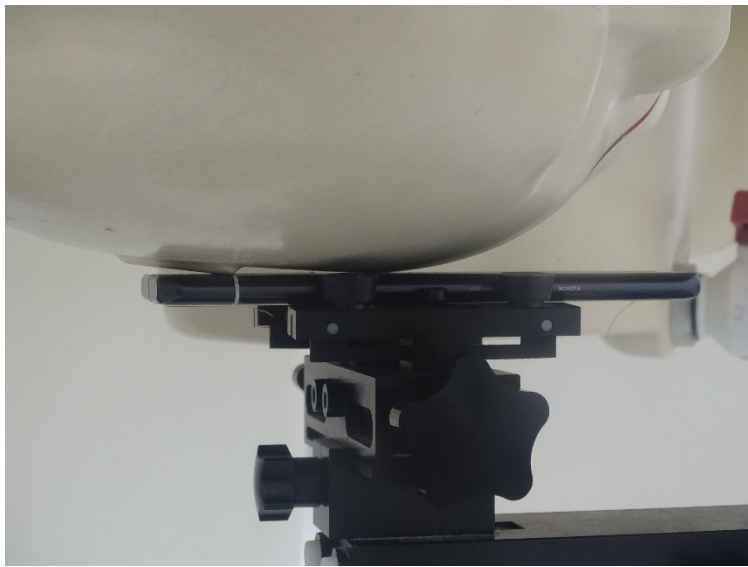


Photo 13: Right Tilt at the best acoustic position



Photo 14: Right Tilt with Protect Cover



Photo 15: Front Side 15mm



Photo 16: Back Side 15mm



Photo 17: Front Side 10mm



Photo 18: Back Side 10mm



Photo 19: Left Side 10mm

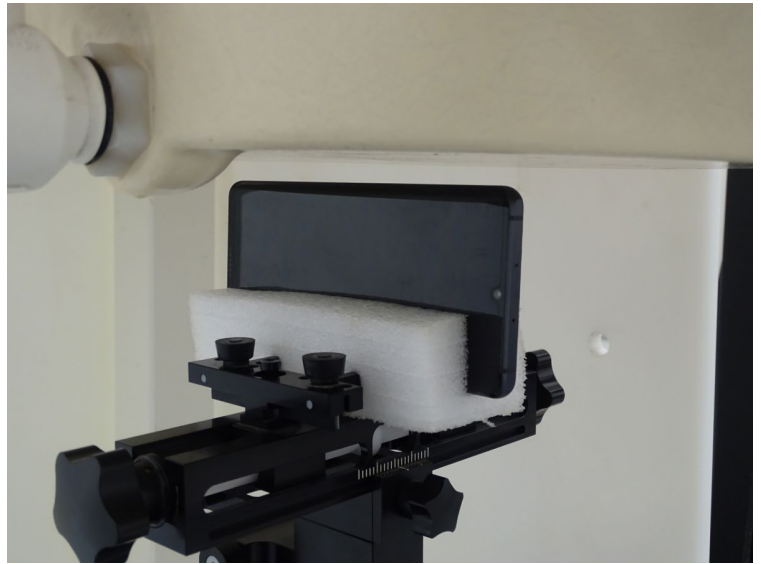


Photo 20: Right Side 10mm



Photo 21: Top Side 10mm



Photo 22: Bottom Side 10mm



Photo 23: Front Side 0mm



Photo 24: Back Side 0mm

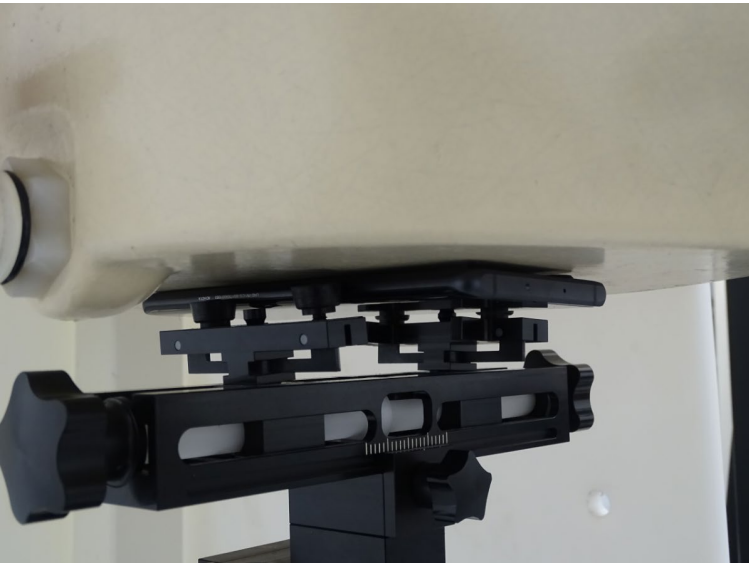


Photo 25: Left Side 0mm

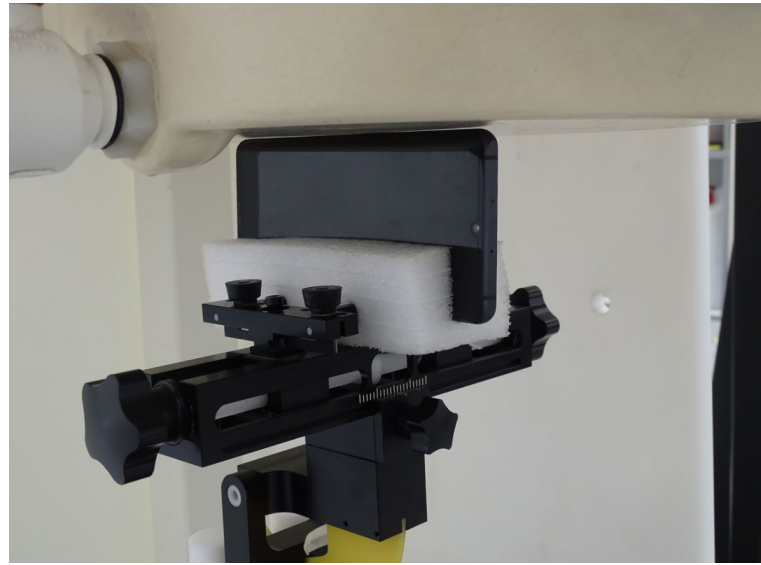


Photo 26: Right Side 0mm



Photo 27: Top Side 0mm

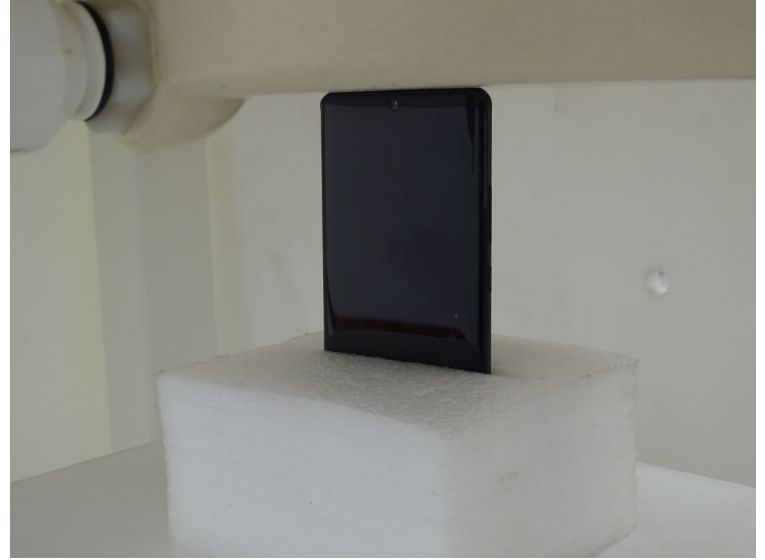


Photo 28: Bottom Side 12mm

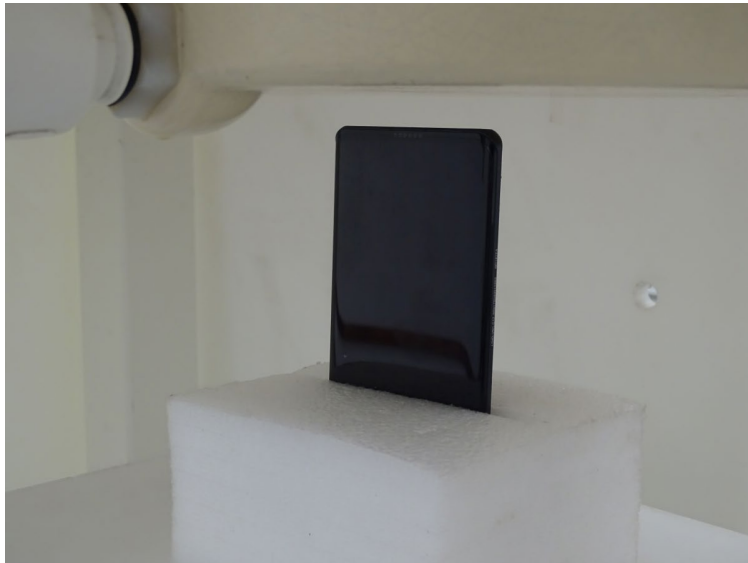


Photo 29: Bottom Side 10mm with Protect Cover



Liquid depth

Photo 30: HBBL600-6000MHz Depth (15.1cm)

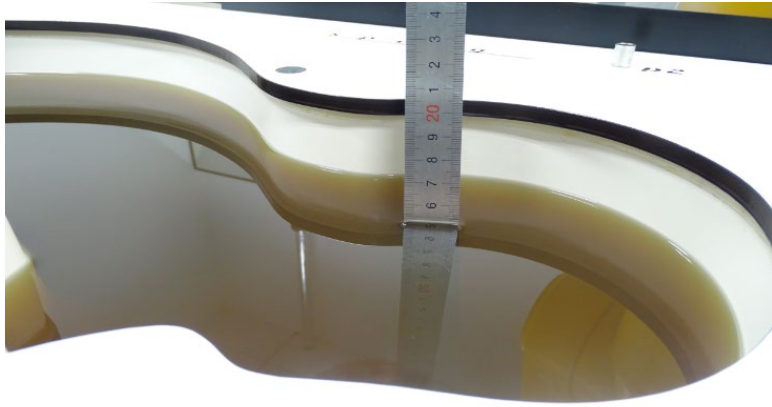


Photo 31: MBBL600-6000MHz Depth (15.2cm)

