

Test Laboratory: HUAWEI SAR/HAC Lab

VOG-L04 LTE Band 7 20M QPSK 1RB 0 Offset 21100CH Back Side 15mm-Main Antenna

DUT: VOG-L04; Type: Smart Phone; Serial: SAR4

Communication System: UID 0, LTE-FDD (SC-FDMA, 20MHz, QPSK/16-QAM) (0); Frequency: 2535 MHz; Duty Cycle: 1:1

Medium parameters used: $f = 2535$ MHz; $\sigma = 2.117$ S/m; $\epsilon_r = 51.606$; $\rho = 1000$ kg/m³

Phantom section: Center Section

DASY Configuration:

- Probe: EX3DV4 - SN7381; ConvF(7.53, 7.53, 7.53) @ 2535 MHz; Calibrated: 2018-9-28
- Sensor-Surface: 1.4mm (Mechanical Surface Detection), $z = 1.0, 31.0$
- Electronics: DAE4 Sn1236; Calibrated: 2018-7-18
- Phantom: Triple Flat Phantom 5.1C; Type: MFP V5.1 C; Serial: 1176/2
- DASY52 52.10.1(1476); SEMCAD X 14.6.11(7439)

Configuration/Body/Area Scan (17x10x1): Measurement grid: $dx=12$ mm, $dy=12$ mm

Maximum value of SAR (measured) = 0.710 W/kg

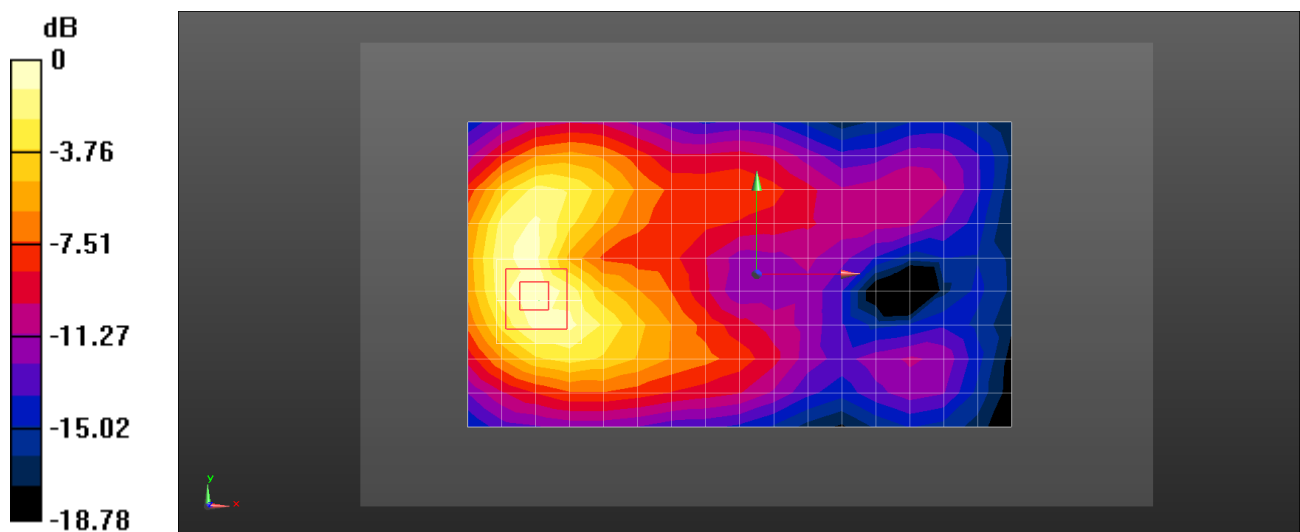
Configuration/Body/Zoom Scan (7x7x7)/Cube 0: Measurement grid: $dx=5$ mm, $dy=5$ mm, $dz=5$ mm

Reference Value = 4.296 V/m; Power Drift = -0.02 dB

Peak SAR (extrapolated) = 0.814 W/kg

SAR(1 g) = 0.459 W/kg; SAR(10 g) = 0.254 W/kg

Maximum value of SAR (measured) = 0.682 W/kg



0 dB = 0.682 W/kg = -1.66 dBW/kg

Test Laboratory: HUAWEI SAR/HAC Lab

VOG-L04 LTE Band 7 20M QPSK 50%RB 0 Offset 21350CH Back Side 10mm-Second Antenna

DUT: VOG-L04; Type: Smart Phone; Serial: SAR4

Communication System: UID 0, LTE-FDD (SC-FDMA, 20MHz, QPSK/16-QAM) (0); Frequency: 2560 MHz; Duty Cycle: 1:1

Medium parameters used: $f = 2560$ MHz; $\sigma = 2.089$ S/m; $\epsilon_r = 49.959$; $\rho = 1000$ kg/m³

Phantom section: Center Section

DASY Configuration:

- Probe: EX3DV4 - SN7381; ConvF(7.53, 7.53, 7.53) @ 2560 MHz; Calibrated: 2018-9-28
- Sensor-Surface: 1.4mm (Mechanical Surface Detection), $z = 1.0, 31.0$
- Electronics: DAE4 Sn1236; Calibrated: 2018-7-18
- Phantom: Triple Flat Phantom 5.1C; Type: MFP V5.1 C; Serial: 1176/2
- DASY52 52.10.1(1476); SEMCAD X 14.6.11(7439)

Configuration/Body/Area Scan (17x10x1): Measurement grid: $dx=12$ mm, $dy=12$ mm
Maximum value of SAR (measured) = 0.350 W/kg

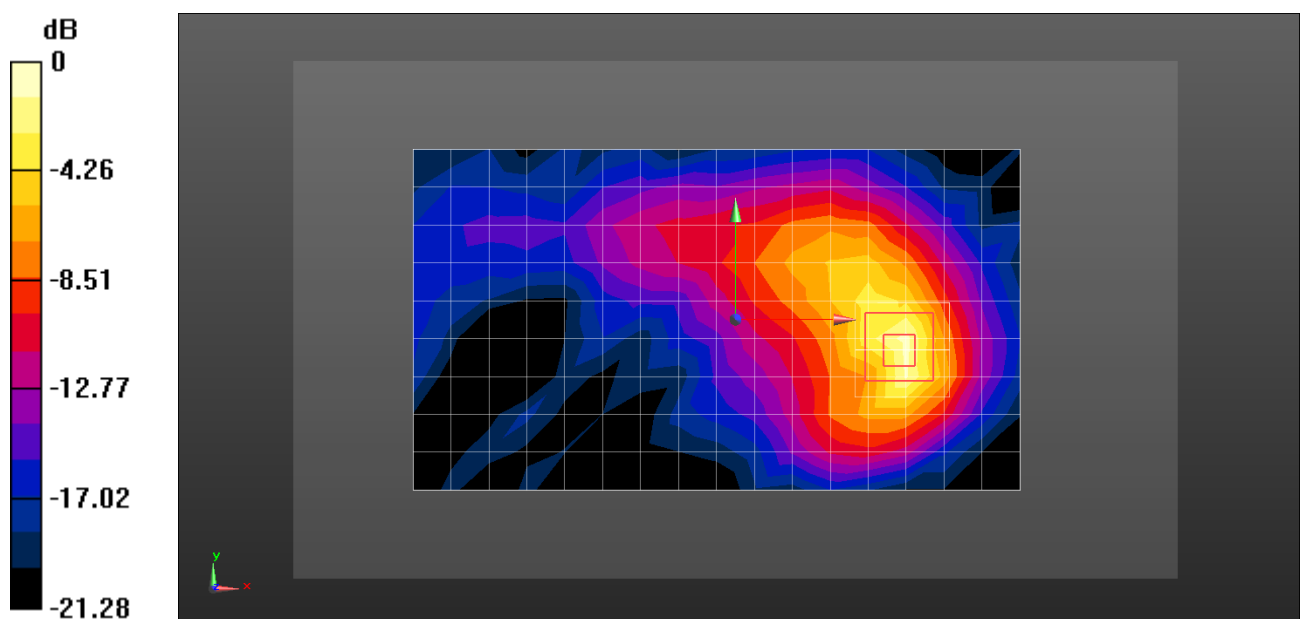
Configuration/Body/Zoom Scan (7x7x7)/Cube 0: Measurement grid: $dx=5$ mm, $dy=5$ mm, $dz=5$ mm

Reference Value = 3.716 V/m; Power Drift = -0.01 dB

Peak SAR (extrapolated) = 0.511 W/kg

SAR(1 g) = 0.255 W/kg; SAR(10 g) = 0.115 W/kg

Maximum value of SAR (measured) = 0.418 W/kg



0 dB = 0.418 W/kg = -3.79 dBW/kg

Test Laboratory: HUAWEI SAR/HAC Lab

VOG-L04 LTE Band 7 20M QPSK 50%RB 0 Offset 21350CH Bottom Side 12mm with Battery2-Main Antenna(Hotspot on)

DUT: VOG-L04; Type: Smart Phone; Serial: SAR4

Communication System: UID 0, LTE-FDD (SC-FDMA, 20MHz, QPSK/16-QAM) (0); Frequency: 2560 MHz;Duty Cycle: 1:1

Medium parameters used: $f = 2560$ MHz; $\sigma = 2.089$ S/m; $\epsilon_r = 49.959$; $\rho = 1000$ kg/m³

Phantom section: Center Section

DASY Configuration:

- Probe: EX3DV4 - SN7381; ConvF(7.53, 7.53, 7.53) @ 2560 MHz; Calibrated: 2018-9-28
- Sensor-Surface: 1.4mm (Mechanical Surface Detection), $z = 1.0, 31.0$
- Electronics: DAE4 Sn1236; Calibrated: 2018-7-18
- Phantom: Triple Flat Phantom 5.1C; Type: MFP V5.1 C; Serial: 1176/2
- DASY52 52.10.1(1476); SEMCAD X 14.6.11(7439)

Configuration/Body/Area Scan (11x6x1): Measurement grid: $dx=12$ mm, $dy=12$ mm
Maximum value of SAR (measured) = 0.629 W/kg

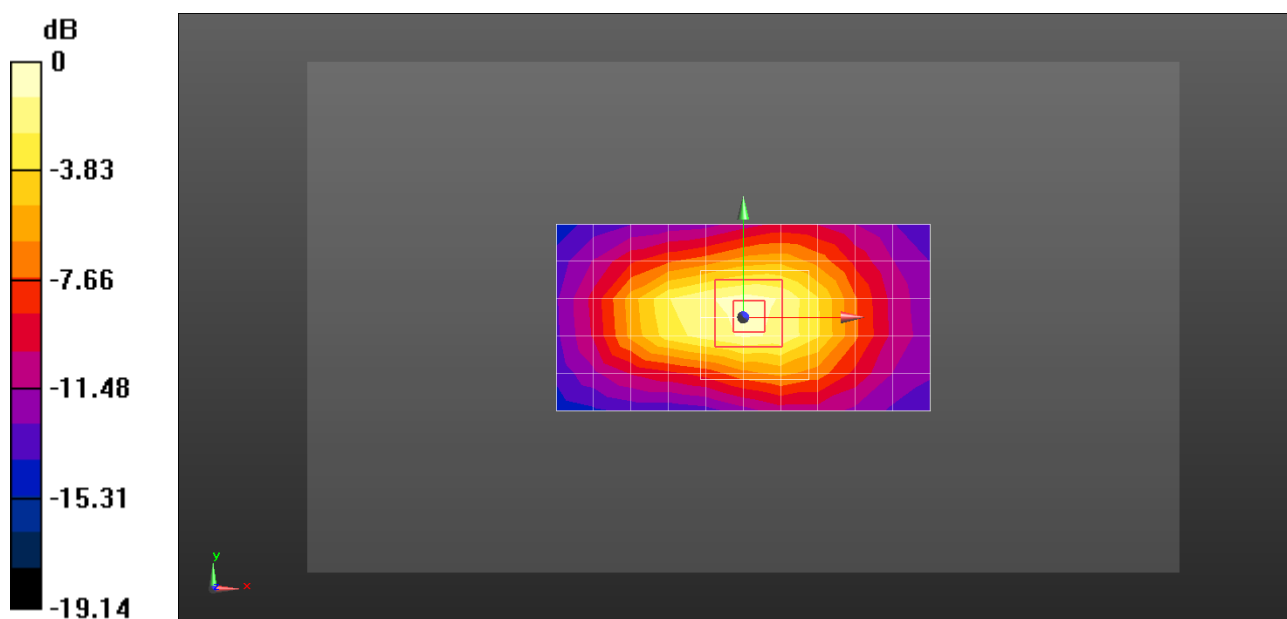
Configuration/Body/Zoom Scan (8x8x7)/Cube 0: Measurement grid: $dx=5$ mm, $dy=5$ mm, $dz=5$ mm

Reference Value = 19.82 V/m; Power Drift = -0.08 dB

Peak SAR (extrapolated) = 0.895 W/kg

SAR(1 g) = 0.486 W/kg; SAR(10 g) = 0.257 W/kg

Maximum value of SAR (measured) = 0.746 W/kg



0 dB = 0.746 W/kg = -1.27 dBW/kg

Test Laboratory: HUAWEI SAR/HAC Lab

VOG-L04 LTE Band 7 20M QPSK 1RB 0 Offset 21350CH Bottom Side 0mm with Battery2-Main Antenna

DUT: VOG-L04; Type: Smart Phone; Serial: SAR4

Communication System: UID 0, LTE-FDD (SC-FDMA, 20MHz, QPSK/16-QAM) (0); Frequency: 2560 MHz; Duty Cycle: 1:1

Medium parameters used: $f = 2560$ MHz; $\sigma = 2.147$ S/m; $\epsilon_r = 51.551$; $\rho = 1000$ kg/m³

Phantom section: Center Section

DASY Configuration:

- Probe: EX3DV4 - SN7381; ConvF(7.53, 7.53, 7.53) @ 2560 MHz; Calibrated: 2018-9-28
- Sensor-Surface: 1.4mm (Mechanical Surface Detection), $z = 1.0, 31.0$
- Electronics: DAE4 Sn1236; Calibrated: 2018-7-18
- Phantom: Triple Flat Phantom 5.1C; Type: MFP V5.1 C; Serial: 1176/2
- DASY52 52.10.1(1476); SEMCAD X 14.6.11(7439)

Configuration/Body/Area Scan (11x6x1): Measurement grid: $dx=12$ mm, $dy=12$ mm

Maximum value of SAR (measured) = 3.43 W/kg

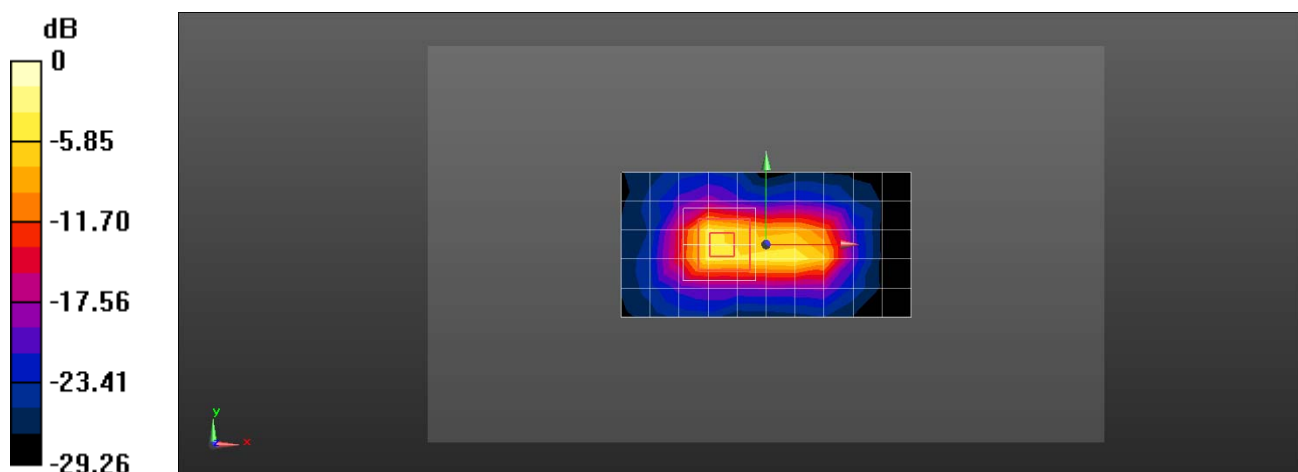
Configuration/Body/Zoom Scan (7x7x7)/Cube 0: Measurement grid: $dx=5$ mm, $dy=5$ mm, $dz=5$ mm

Reference Value = 52.52 V/m; Power Drift = -0.12 dB

Peak SAR (extrapolated) = 13.0 W/kg

SAR(1 g) = 4.47 W/kg; SAR(10 g) = 1.45 W/kg

Maximum value of SAR (measured) = 9.54 W/kg



0 dB = 9.54 W/kg = 9.80 dBW/kg

Test Laboratory: HUAWEI SAR/HAC Lab

VOG-L04 LTE Band 12 10M QPSK 50%RB 13 Offset 23060CH Right Tilt with Battery2-Second Antenna

DUT: VOG-L04; Type: Smart Phone; Serial: SAR5

Communication System: UID 0, LTE-FDD (SC-FDMA, 10MHz, QPSK/16-QAM) (0); Frequency: 704 MHz; Duty Cycle: 1:1

Medium parameters used: $f = 704 \text{ MHz}$; $\sigma = 0.893 \text{ S/m}$; $\epsilon_r = 41.2$; $\rho = 1000 \text{ kg/m}^3$

Phantom section: Right Section

DASY Configuration:

- Probe: EX3DV4 - SN3743; ConvF(9.77, 9.77, 9.77) @ 704 MHz; Calibrated: 2018-11-19
- Sensor-Surface: 1.4mm (Mechanical Surface Detection), $z = 1.0, 31.0$
- Electronics: DAE4 Sn1554; Calibrated: 2018-6-5
- Phantom: SAM8; Type: SAM; Serial: 1940
- DASY52 52.10.1(1476); SEMCAD X 14.6.11(7439)

Configuration/Head/Area Scan (9x14x1): Measurement grid: $dx=15\text{mm}$, $dy=15\text{mm}$

Maximum value of SAR (measured) = 0.671 W/kg

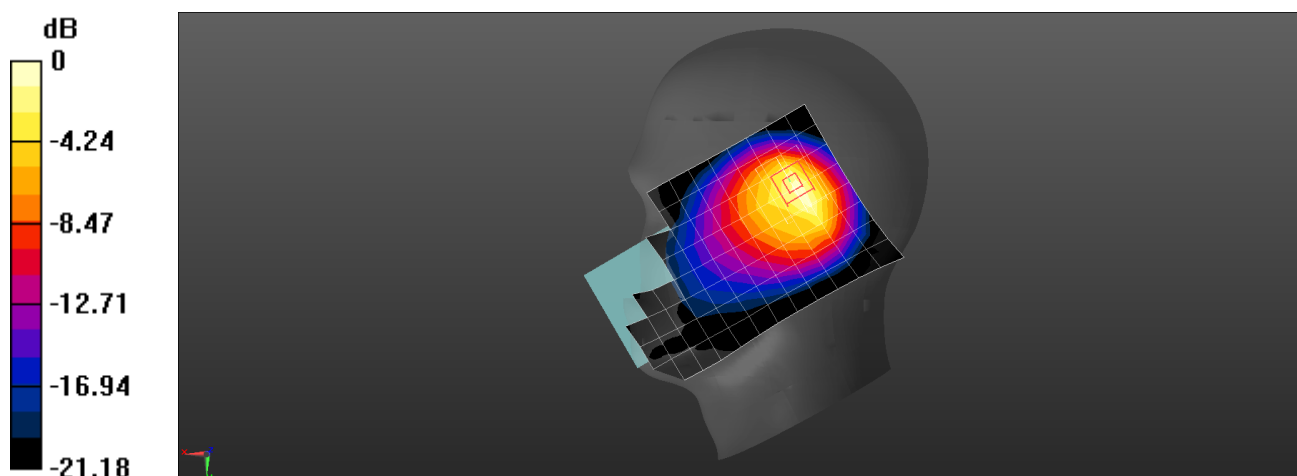
Configuration/Head/Zoom Scan (6x5x7)/Cube 0: Measurement grid: $dx=8\text{mm}$, $dy=8\text{mm}$, $dz=5\text{mm}$

Reference Value = 17.74 V/m ; Power Drift = -0.02 dB

Peak SAR (extrapolated) = 1.09 W/kg

SAR(1 g) = 0.369 W/kg ; SAR(10 g) = 0.176 W/kg

Maximum value of SAR (measured) = 0.747 W/kg



0 dB = $0.747 \text{ W/kg} = -1.27 \text{ dBW/kg}$

Test Laboratory: HUAWEI SAR/HAC Lab

VOG-L04 LTE Band 12 10M QPSK 1RB 0 Offset 23130CH Right Cheek with Battery2-Main Antenna

DUT: VOG-L04; Type: Smart Phone; Serial: SAR5

Communication System: UID 0, LTE-FDD (SC-FDMA, 10MHz, QPSK/16-QAM) (0); Frequency: 711 MHz; Duty Cycle: 1:1

Medium parameters used: $f = 711 \text{ MHz}$; $\sigma = 0.91 \text{ S/m}$; $\epsilon_r = 40.898$; $\rho = 1000 \text{ kg/m}^3$

Phantom section: Right Section

DASY Configuration:

- Probe: EX3DV4 - SN3743; ConvF(9.77, 9.77, 9.77) @ 711 MHz; Calibrated: 2018-11-19
- Sensor-Surface: 1.4mm (Mechanical Surface Detection), $z = 1.0, 31.0$
- Electronics: DAE4 Sn1554; Calibrated: 2018-6-5
- Phantom: SAM8; Type: SAM; Serial: 1940
- DASY52 52.10.1(1476); SEMCAD X 14.6.11(7439)

Configuration/Head/Area Scan (9x14x1): Measurement grid: $dx=15\text{mm}$, $dy=15\text{mm}$

Maximum value of SAR (measured) = 0.0808 W/kg

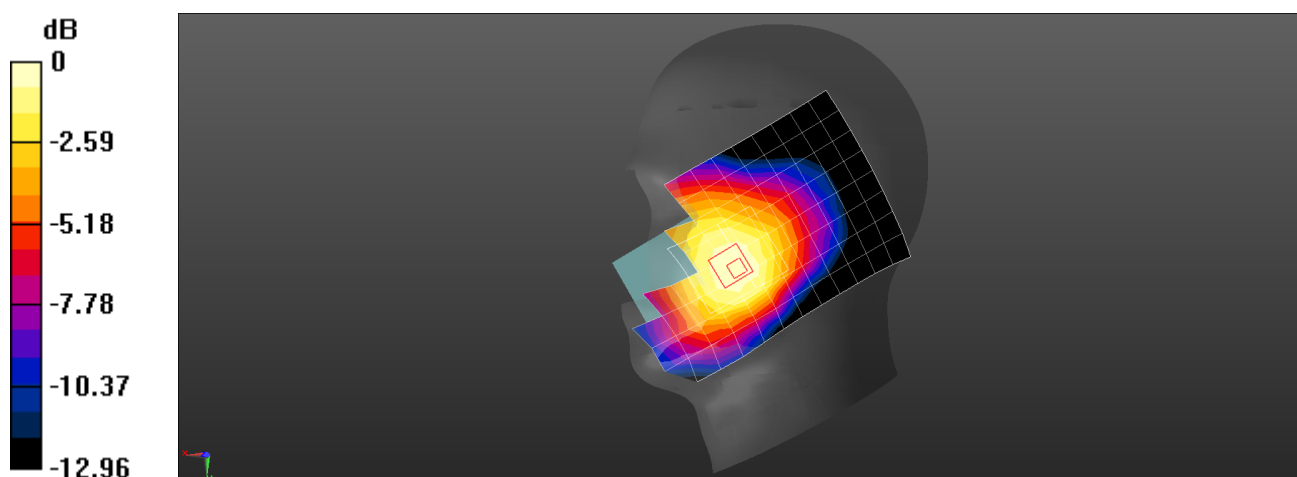
Configuration/Head/Zoom Scan (7x8x7)/Cube 0: Measurement grid: $dx=8\text{mm}$, $dy=8\text{mm}$, $dz=5\text{mm}$

Reference Value = 4.006 V/m; Power Drift = 0.10 dB

Peak SAR (extrapolated) = 0.0910 W/kg

SAR(1 g) = 0.073 W/kg; SAR(10 g) = 0.057 W/kg

Maximum value of SAR (measured) = 0.0845 W/kg



0 dB = 0.0845 W/kg = -10.73 dBW/kg

Test Laboratory: HUAWEI SAR/HAC Lab

VOG-L04 LTE Band 12 10M QPSK 1RB 25 Offset 23095CH Front Side 15mm with Battery2-Second Antenna

DUT: VOG-L04; Type: Smart Phone; Serial: SAR4

Communication System: UID 0, LTE-FDD (SC-FDMA, 10MHz, QPSK/16-QAM) (0); Frequency: 707.5 MHz; Duty Cycle: 1:1

Medium parameters used (interpolated): $f = 707.5$ MHz; $\sigma = 0.934$ S/m; $\epsilon_r = 54.819$; $\rho = 1000$ kg/m³
Phantom section: Center Section

DASY Configuration:

- Probe: EX3DV4 - SN7381; ConvF(10.74, 10.74, 10.74) @ 707.5 MHz; Calibrated: 2018-9-28
- Sensor-Surface: 1.4mm (Mechanical Surface Detection), $z = 1.0, 31.0$
- Electronics: DAE4 Sn1236; Calibrated: 2018-7-18
- Phantom: Triple Flat Phantom 5.1C; Type: MFP V5.1 C; Serial: 1176/2
- DASY52 52.10.1(1476); SEMCAD X 14.6.11(7439)

Configuration/Body/Area Scan (14x9x1): Measurement grid: dx=15mm, dy=15mm

[Info: Interpolated medium parameters used for SAR evaluation.](#)

Maximum value of SAR (measured) = 0.197 W/kg

Configuration/Body/Zoom Scan (5x6x7)/Cube 0: Measurement grid: dx=8mm, dy=8mm, dz=5mm

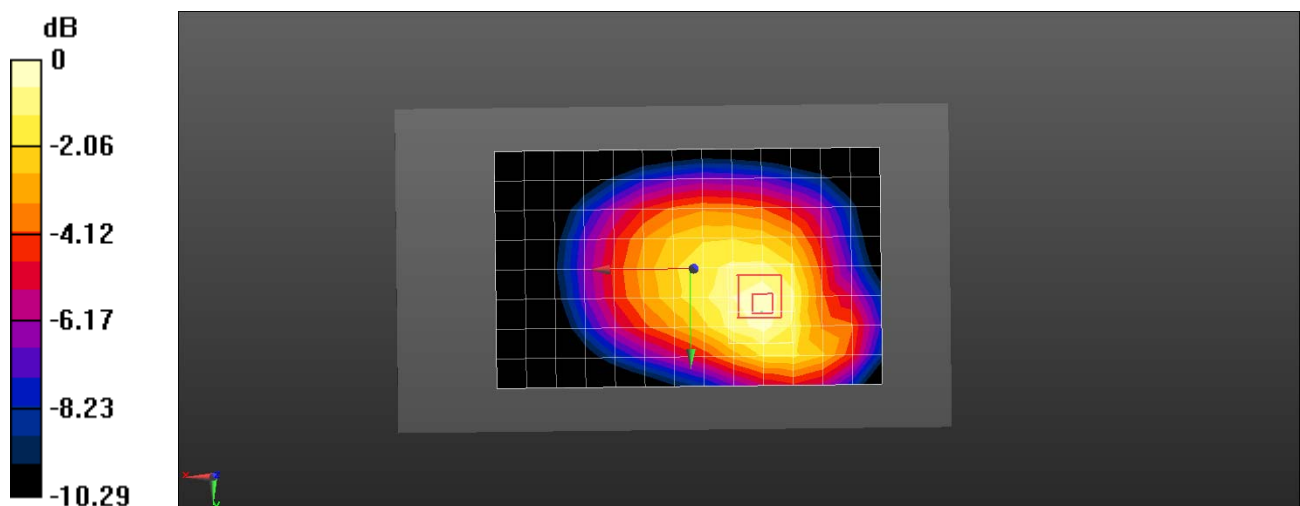
Reference Value = 12.19 V/m; Power Drift = 0.03 dB

Peak SAR (extrapolated) = 0.225 W/kg

SAR(1 g) = 0.172 W/kg; SAR(10 g) = 0.129 W/kg

[Info: Interpolated medium parameters used for SAR evaluation.](#)

Maximum value of SAR (measured) = 0.207 W/kg



0 dB = 0.207 W/kg = -6.84 dBW/kg

Test Laboratory: HUAWEI SAR/HAC Lab

VOG-L04 LTE Band 12 10M QPSK 1RB 0 Offset 23130CH Back Side 15mm with Battery2-Main Antenna

DUT: VOG-L04; Type: Smart Phone; Serial: SAR4

Communication System: UID 0, LTE-FDD (SC-FDMA, 10MHz, QPSK/16-QAM) (0); Frequency: 711 MHz; Duty Cycle: 1:1

Medium parameters used: $f = 711 \text{ MHz}$; $\sigma = 0.926 \text{ S/m}$; $\epsilon_r = 53.971$; $\rho = 1000 \text{ kg/m}^3$

Phantom section: Center Section

DASY Configuration:

- Probe: EX3DV4 - SN7381; ConvF(10.74, 10.74, 10.74) @ 711 MHz; Calibrated: 2018-9-28
- Sensor-Surface: 1.4mm (Mechanical Surface Detection), $z = 1.0, 31.0$
- Electronics: DAE4 Sn1236; Calibrated: 2018-7-18
- Phantom: Triple Flat Phantom 5.1C; Type: MFP V5.1 C; Serial: 1176/2
- DASY52 52.10.1(1476); SEMCAD X 14.6.11(7439)

Configuration/Body/Area Scan (14x9x1): Measurement grid: $dx=15\text{mm}$, $dy=15\text{mm}$
Maximum value of SAR (measured) = 0.270 W/kg

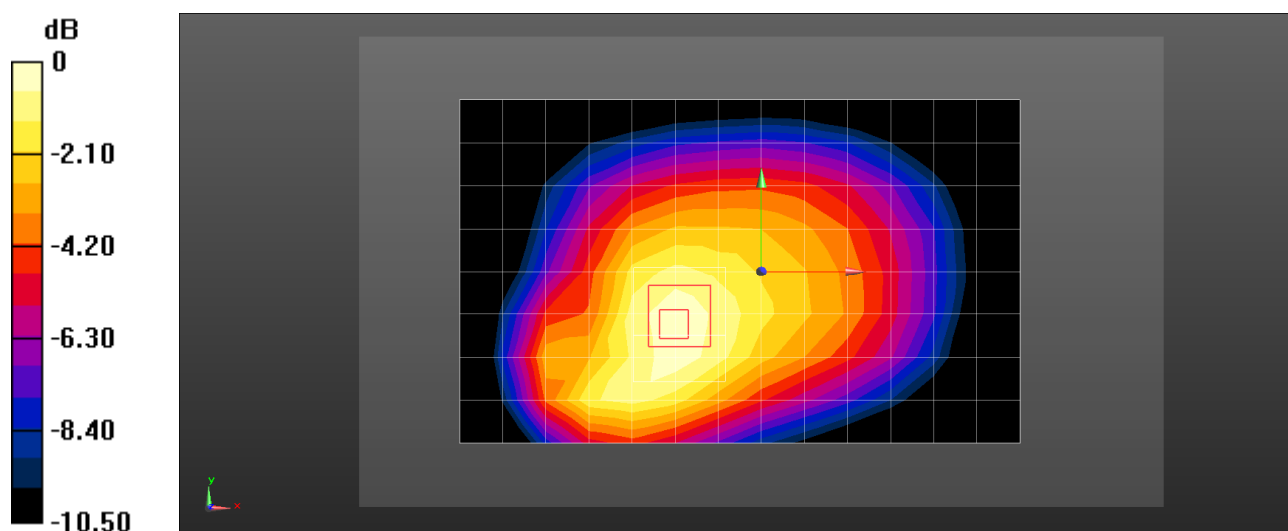
Configuration/Body/Zoom Scan (5x6x7)/Cube 0: Measurement grid: $dx=8\text{mm}$, $dy=8\text{mm}$, $dz=5\text{mm}$

Reference Value = 14.07 V/m; Power Drift = -0.10 dB

Peak SAR (extrapolated) = 0.301 W/kg

SAR(1 g) = 0.225 W/kg; SAR(10 g) = 0.165 W/kg

Maximum value of SAR (measured) = 0.274 W/kg



0 dB = 0.274 W/kg = -5.62 dBW/kg

Test Laboratory: HUAWEI SAR/HAC Lab

VOG-L04 LTE Band 12 10M QPSK 1RB 0 Offset 23130CH Back Side 10mm-Second Antenna

DUT: VOG-L04; Type: Smart Phone; Serial: SAR4

Communication System: UID 0, LTE-FDD (SC-FDMA, 10MHz, QPSK/16-QAM) (0); Frequency: 711 MHz; Duty Cycle: 1:1

Medium parameters used: $f = 711$ MHz; $\sigma = 0.936$ S/m; $\epsilon_r = 54.808$; $\rho = 1000$ kg/m³

Phantom section: Center Section

DASY Configuration:

- Probe: EX3DV4 - SN7381; ConvF(10.74, 10.74, 10.74) @ 711 MHz; Calibrated: 2018-9-28
- Sensor-Surface: 1.4mm (Mechanical Surface Detection), $z = 1.0, 31.0$
- Electronics: DAE4 Sn1236; Calibrated: 2018-7-18
- Phantom: Triple Flat Phantom 5.1C; Type: MFP V5.1 C; Serial: 1176/2
- DASY52 52.10.1(1476); SEMCAD X 14.6.11(7439)

Configuration/Body/Area Scan (14x9x1): Measurement grid: $dx=15$ mm, $dy=15$ mm

Maximum value of SAR (measured) = 0.376 W/kg

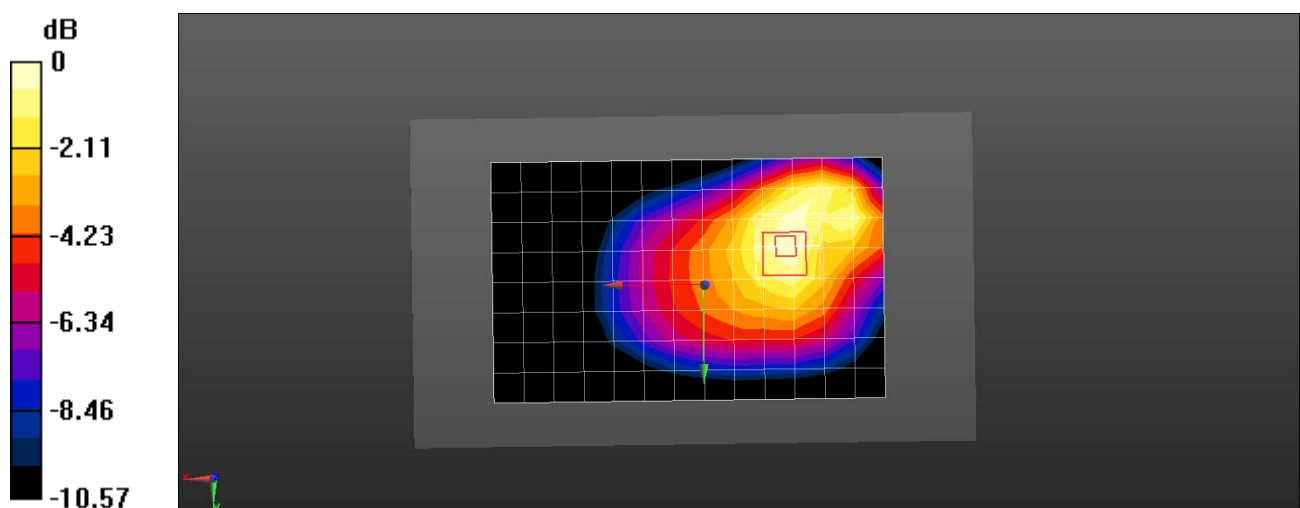
Configuration/Body/Zoom Scan (5x5x7)/Cube 0: Measurement grid: $dx=8$ mm, $dy=8$ mm, $dz=5$ mm

Reference Value = 13.11 V/m; Power Drift = 0.04 dB

Peak SAR (extrapolated) = 0.418 W/kg

SAR(1 g) = 0.306 W/kg; SAR(10 g) = 0.219 W/kg

Maximum value of SAR (measured) = 0.379 W/kg



0 dB = 0.379 W/kg = -4.21 dBW/kg

Test Laboratory: HUAWEI SAR/HAC Lab

VOG-L04 LTE Band 12 10M QPSK 1RB 0 Offset 23130CH Back Side 10mm with Battery2-Main Antenna

DUT: VOG-L04; Type: Smart Phone; Serial: SAR4

Communication System: UID 0, LTE-FDD (SC-FDMA, 10MHz, QPSK/16-QAM) (0); Frequency: 711 MHz; Duty Cycle: 1:1

Medium parameters used: $f = 711$ MHz; $\sigma = 0.926$ S/m; $\epsilon_r = 53.971$; $\rho = 1000$ kg/m³

Phantom section: Center Section

DASY Configuration:

- Probe: EX3DV4 - SN7381; ConvF(10.74, 10.74, 10.74) @ 711 MHz; Calibrated: 2018-9-28
- Sensor-Surface: 1.4mm (Mechanical Surface Detection), $z = 1.0, 31.0$
- Electronics: DAE4 Sn1236; Calibrated: 2018-7-18
- Phantom: Triple Flat Phantom 5.1C; Type: MFP V5.1 C; Serial: 1176/2
- DASY52 52.10.1(1476); SEMCAD X 14.6.11(7439)

Configuration/Body/Area Scan (14x9x1): Measurement grid: $dx=15$ mm, $dy=15$ mm

Maximum value of SAR (measured) = 0.354 W/kg

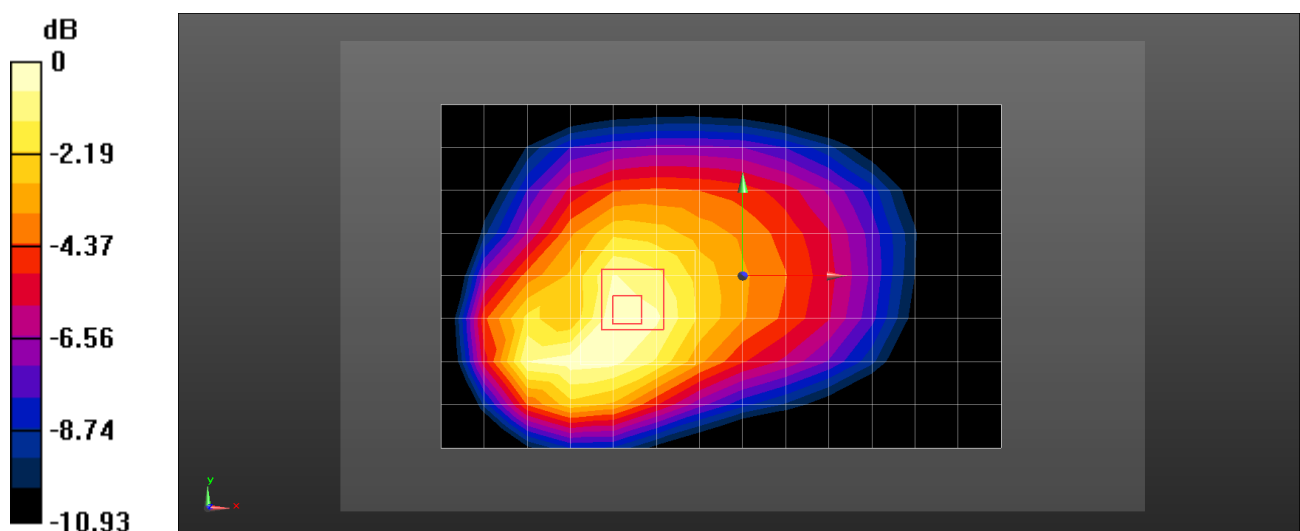
Configuration/Body/Zoom Scan (6x6x7)/Cube 0: Measurement grid: $dx=8$ mm, $dy=8$ mm, $dz=5$ mm

Reference Value = 13.91 V/m; Power Drift = -0.02 dB

Peak SAR (extrapolated) = 0.400 W/kg

SAR(1 g) = 0.292 W/kg; SAR(10 g) = 0.209 W/kg

Maximum value of SAR (measured) = 0.365 W/kg



0 dB = 0.365 W/kg = -4.38 dBW/kg

Test Laboratory: HUAWEI SAR/HAC Lab

VOG-L04 LTE Band 26 15M QPSK 50%RB 0 Offset 26865CH Right Cheek-Second Antenna

DUT: VOG-L04; Type: Smart Phone; Serial: SAR6

Communication System: UID 0, LTE-FDD (SC-FDMA, 15MHz, QPSK/16-QAM) (0); Frequency: 831.5 MHz; Duty Cycle: 1:1

Medium parameters used (interpolated): $f = 831.5$ MHz; $\sigma = 0.935$ S/m; $\epsilon_r = 42.292$; $\rho = 1000$ kg/m³

Phantom section: Right Section

DASY Configuration:

- Probe: EX3DV4 - SN3736; ConvF(8.86, 8.86, 8.86) @ 831.5 MHz; Calibrated: 2018-4-27
- Sensor-Surface: 1.4mm (Mechanical Surface Detection), $z = 1.0, 31.0$
- Electronics: DAE4 Sn851; Calibrated: 2018-7-18
- Phantom: SAM9; Type: SAM; Serial: 1958
- DASY52 52.10.1(1476); SEMCAD X 14.6.11(7439)

Configuration/Head/Area Scan (9x14x1): Measurement grid: $dx=15$ mm, $dy=15$ mm

[Info: Interpolated medium parameters used for SAR evaluation.](#)

Maximum value of SAR (measured) = 0.597 W/kg

Configuration/Head/Zoom Scan (5x5x7)/Cube 0: Measurement grid: $dx=8$ mm, $dy=8$ mm, $dz=5$ mm

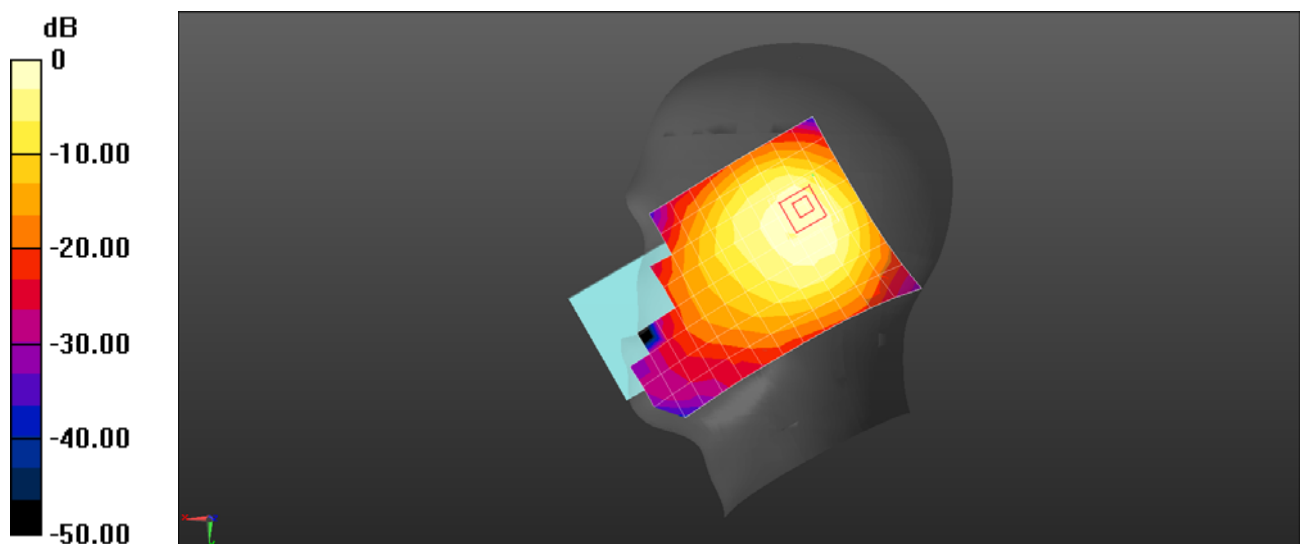
Reference Value = 17.77 V/m; Power Drift = -0.01 dB

Peak SAR (extrapolated) = 0.902 W/kg

SAR(1 g) = 0.397 W/kg; SAR(10 g) = 0.206 W/kg

[Info: Interpolated medium parameters used for SAR evaluation.](#)

Maximum value of SAR (measured) = 0.711 W/kg



0 dB = 0.597 W/kg = -2.24 dBW/kg

Test Laboratory: HUAWEI SAR/HAC Lab

VOG-L04 LTE Band 26 15M QPSK 1RB 0 Offset 26965CH Right Cheek with Battery2-Main Antenna

DUT: VOG-L04; Type: Smart Phone; Serial: SAR6

Communication System: UID 0, LTE-FDD (SC-FDMA, 15MHz, QPSK/16-QAM) (0); Frequency: 841.5 MHz; Duty Cycle: 1:1

Medium parameters used (interpolated): $f = 841.5$ MHz; $\sigma = 0.938$ S/m; $\epsilon_r = 42.268$; $\rho = 1000$ kg/m³

Phantom section: Right Section

DASY Configuration:

- Probe: EX3DV4 - SN3736; ConvF(8.86, 8.86, 8.86) @ 841.5 MHz; Calibrated: 2018-4-27
- Sensor-Surface: 1.4mm (Mechanical Surface Detection), $z = 1.0, 31.0$
- Electronics: DAE4 Sn851; Calibrated: 2018-7-18
- Phantom: SAM9; Type: SAM; Serial: 1958
- DASY52 52.10.1(1476); SEMCAD X 14.6.11(7439)

Configuration/Head/Area Scan (9x14x1): Measurement grid: $dx=15$ mm, $dy=15$ mm

[Info: Interpolated medium parameters used for SAR evaluation.](#)

Maximum value of SAR (measured) = 0.166 W/kg

Configuration/Head/Zoom Scan (6x5x7)/Cube 0: Measurement grid: $dx=8$ mm, $dy=8$ mm, $dz=5$ mm

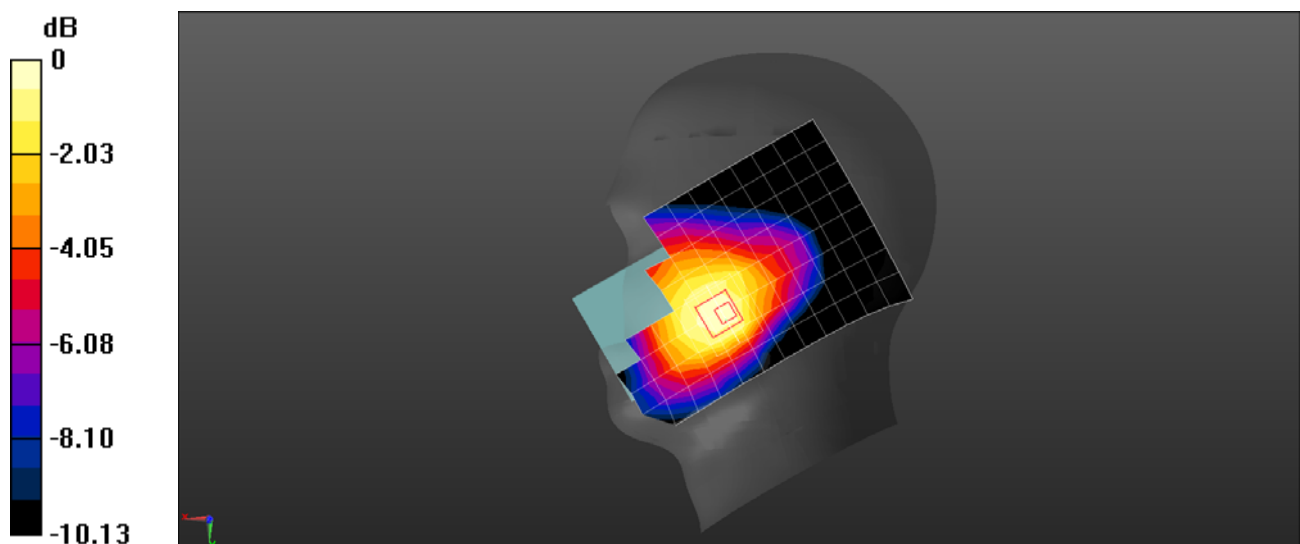
Reference Value = 6.510 V/m; Power Drift = 0.16 dB

Peak SAR (extrapolated) = 0.187 W/kg

SAR(1 g) = 0.140 W/kg; SAR(10 g) = 0.107 W/kg

[Info: Interpolated medium parameters used for SAR evaluation.](#)

Maximum value of SAR (measured) = 0.168 W/kg



0 dB = 0.168 W/kg = -7.75 dBW/kg

Test Laboratory: HUAWEI SAR/HAC Lab

VOG-L04 LTE Band 26 15M QPSK 1RB 38 Offset 26965CH Back Side 15mm with Battery2-Second Antenna

DUT: VOG-L04; Type: Smart Phone; Serial: SAR3

Communication System: UID 0, LTE-FDD (SC-FDMA, 15MHz, QPSK/16-QAM) (0); Frequency: 841.5 MHz; Duty Cycle: 1:1

Medium parameters used (interpolated): $f = 841.5$ MHz; $\sigma = 1.006$ S/m; $\epsilon_r = 53.182$; $\rho = 1000$ kg/m³

Phantom section: Flat Section

DASY Configuration:

- Probe: EX3DV4 - SN3744; ConvF(9.12, 9.12, 9.12) @ 841.5 MHz; Calibrated: 2018-7-25
- Sensor-Surface: 1.4mm (Mechanical Surface Detection), $z = 1.0, 31.0$
- Electronics: DAE4 Sn852; Calibrated: 2018-4-23
- Phantom: SAM5; Type: SAM; Serial: 1892
- DASY52 52.10.1(1476); SEMCAD X 14.6.11(7439)

Configuration/Body/Area Scan (9x13x1): Measurement grid: $dx=15$ mm, $dy=15$ mm

[Info: Interpolated medium parameters used for SAR evaluation.](#)

Maximum value of SAR (measured) = 0.331 W/kg

Configuration/Body/Zoom Scan (5x5x7)/Cube 0: Measurement grid: $dx=8$ mm, $dy=8$ mm, $dz=5$ mm

Reference Value = 11.34 V/m; Power Drift = -0.08 dB

Peak SAR (extrapolated) = 0.392 W/kg

SAR(1 g) = 0.262 W/kg; SAR(10 g) = 0.175 W/kg

[Info: Interpolated medium parameters used for SAR evaluation.](#)

Maximum value of SAR (measured) = 0.339 W/kg

Configuration/Body/Zoom Scan (5x5x7)/Cube 1: Measurement grid: $dx=8$ mm, $dy=8$ mm, $dz=5$ mm

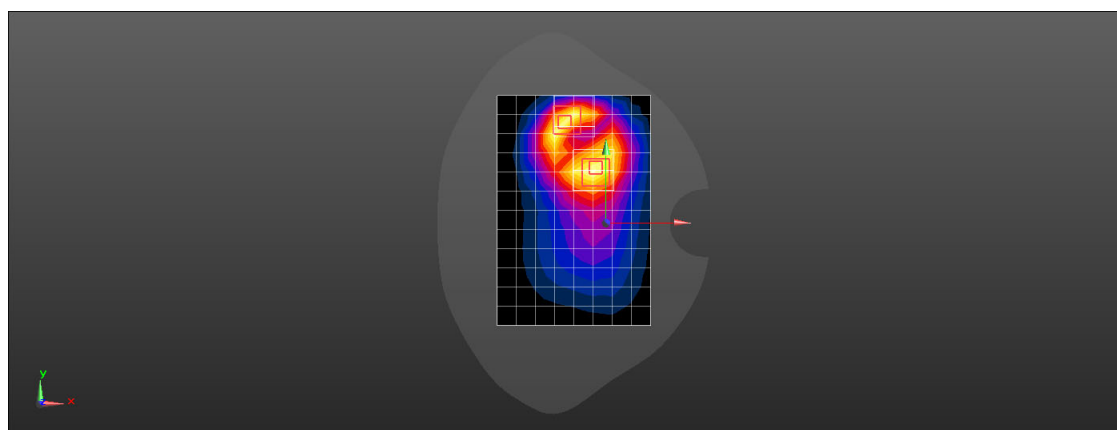
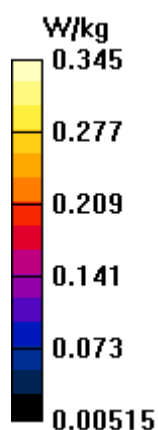
Reference Value = 11.34 V/m; Power Drift = -0.08 dB

Peak SAR (extrapolated) = 0.422 W/kg

SAR(1 g) = 0.247 W/kg; SAR(10 g) = 0.144 W/kg

[Info: Interpolated medium parameters used for SAR evaluation.](#)

Maximum value of SAR (measured) = 0.345 W/kg



Test Laboratory: HUAWEI SAR/HAC Lab

VOG-L04 LTE Band 26 15M QPSK 1RB 38 Offset 26765CH Back Side 15mm with Battery2-Main Antenna

DUT: VOG-L04; Type: Smart Phone; Serial: SAR3

Communication System: UID 0, LTE-FDD (SC-FDMA, 15MHz, QPSK/16-QAM) (0); Frequency: 821.5 MHz; Duty Cycle: 1:1

Medium parameters used (interpolated): $f = 821.5$ MHz; $\sigma = 0.997$ S/m; $\epsilon_r = 53.248$; $\rho = 1000$ kg/m³

Phantom section: Flat Section

DASY Configuration:

- Probe: EX3DV4 - SN3744; ConvF(9.12, 9.12, 9.12) @ 821.5 MHz; Calibrated: 2018-7-25
- Sensor-Surface: 1.4mm (Mechanical Surface Detection), $z = 1.0, 31.0$
- Electronics: DAE4 Sn852; Calibrated: 2018-4-23
- Phantom: SAM5; Type: SAM; Serial: 1892
- DASY52 52.10.1(1476); SEMCAD X 14.6.11(7439)

Configuration/Body/Area Scan (9x13x1): Measurement grid: $dx=15$ mm, $dy=15$ mm

[Info: Interpolated medium parameters used for SAR evaluation.](#)

Maximum value of SAR (measured) = 0.336 W/kg

Configuration/Body/Zoom Scan (5x5x7)/Cube 0: Measurement grid: $dx=8$ mm, $dy=8$ mm, $dz=5$ mm

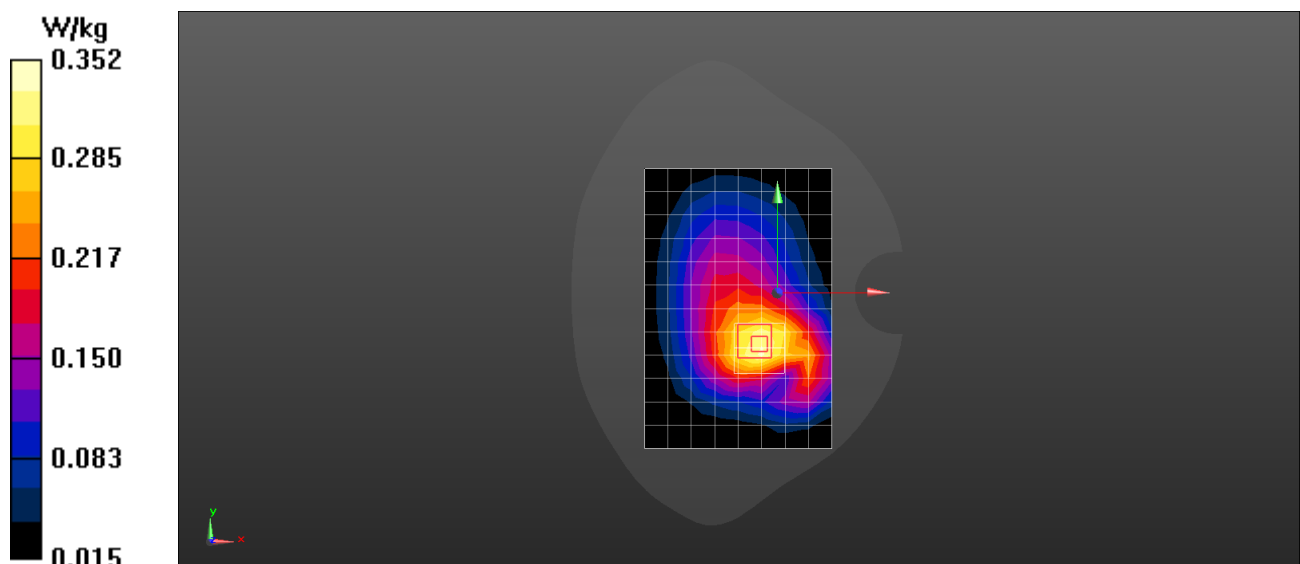
Reference Value = 14.93 V/m; Power Drift = -0.01 dB

Peak SAR (extrapolated) = 0.395 W/kg

SAR(1 g) = 0.277 W/kg; SAR(10 g) = 0.195 W/kg

[Info: Interpolated medium parameters used for SAR evaluation.](#)

Maximum value of SAR (measured) = 0.352 W/kg



Test Laboratory: HUAWEI SAR/HAC Lab

VOG-L04 LTE Band 26 15M QPSK 1RB 38 Offset 26965CH Back Side 10mm-Second Antenna

DUT: VOG-L04; Type: Smart Phone; Serial: SAR3

Communication System: UID 0, LTE-FDD (SC-FDMA, 15MHz, QPSK/16-QAM) (0); Frequency: 841.5 MHz; Duty Cycle: 1:1

Medium parameters used (interpolated): $f = 841.5$ MHz; $\sigma = 1.006$ S/m; $\epsilon_r = 53.182$; $\rho = 1000$ kg/m³

Phantom section: Flat Section

DASY Configuration:

- Probe: EX3DV4 - SN3744; ConvF(9.12, 9.12, 9.12) @ 841.5 MHz; Calibrated: 2018-7-25
- Sensor-Surface: 1.4mm (Mechanical Surface Detection), $z = 1.0, 31.0$
- Electronics: DAE4 Sn852; Calibrated: 2018-4-23
- Phantom: SAM5; Type: SAM; Serial: 1892
- DASY52 52.10.1(1476); SEMCAD X 14.6.11(7439)

Configuration/Body/Area Scan (9x13x1): Measurement grid: $dx=15$ mm, $dy=15$ mm

[Info: Interpolated medium parameters used for SAR evaluation.](#)

Maximum value of SAR (measured) = 0.825 W/kg

Configuration/Body/Zoom Scan (6x6x7)/Cube 0: Measurement grid: $dx=8$ mm, $dy=8$ mm, $dz=5$ mm

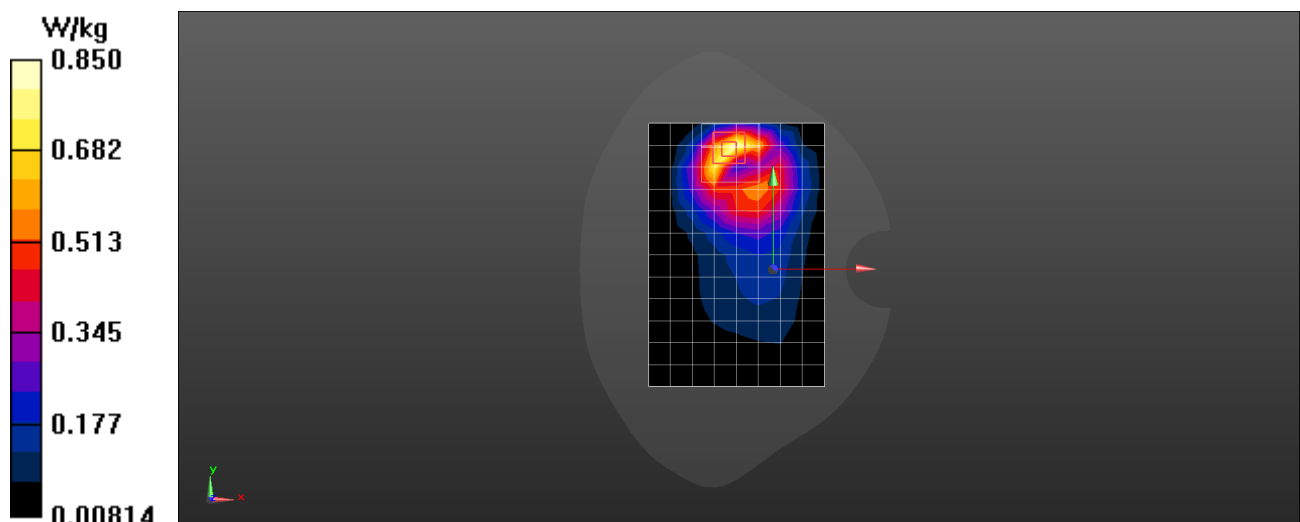
Reference Value = 11.95 V/m; Power Drift = -0.07 dB

Peak SAR (extrapolated) = 1.06 W/kg

SAR(1 g) = 0.578 W/kg; SAR(10 g) = 0.320 W/kg

[Info: Interpolated medium parameters used for SAR evaluation.](#)

Maximum value of SAR (measured) = 0.850 W/kg



Test Laboratory: HUAWEI SAR/HAC Lab

VOG-L04 LTE Band 26 15M QPSK 1RB 38 Offset 26865CH Back Side 10mm with Battery2-Main Antenna

DUT: VOG-L04; Type: Smart Phone; Serial: SAR3

Communication System: UID 0, LTE-FDD (SC-FDMA, 15MHz, QPSK/16-QAM) (0); Frequency: 831.5 MHz; Duty Cycle: 1:1

Medium parameters used (interpolated): $f = 831.5$ MHz; $\sigma = 1.002$ S/m; $\epsilon_r = 53.222$; $\rho = 1000$ kg/m³

Phantom section: Flat Section

DASY Configuration:

- Probe: EX3DV4 - SN3744; ConvF(9.12, 9.12, 9.12) @ 831.5 MHz; Calibrated: 2018-7-25
- Sensor-Surface: 1.4mm (Mechanical Surface Detection), $z = 1.0, 31.0$
- Electronics: DAE4 Sn852; Calibrated: 2018-4-23
- Phantom: SAM5; Type: SAM; Serial: 1892
- DASY52 52.10.1(1476); SEMCAD X 14.6.11(7439)

Configuration/Body/Area Scan (9x13x1): Measurement grid: $dx=15$ mm, $dy=15$ mm

[Info: Interpolated medium parameters used for SAR evaluation.](#)

Maximum value of SAR (measured) = 0.578 W/kg

Configuration/Body/Zoom Scan (8x6x7)/Cube 1: Measurement grid: $dx=8$ mm, $dy=8$ mm, $dz=5$ mm

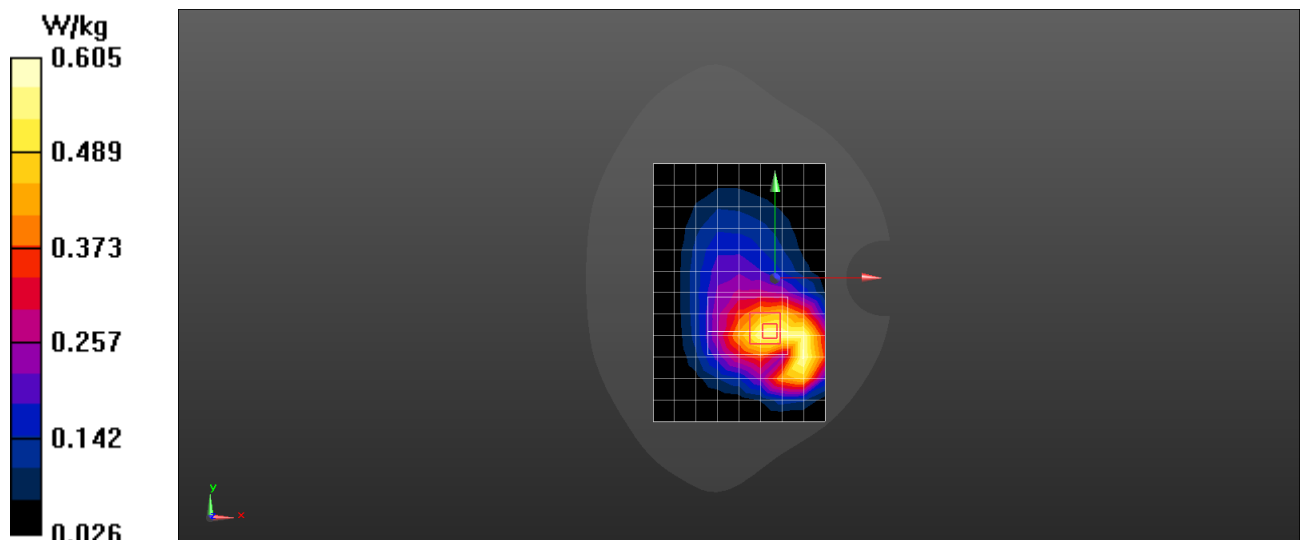
Reference Value = 15.75 V/m; Power Drift = -0.09 dB

Peak SAR (extrapolated) = 0.683 W/kg

SAR(1 g) = 0.464 W/kg; SAR(10 g) = 0.314 W/kg

[Info: Interpolated medium parameters used for SAR evaluation.](#)

Maximum value of SAR (measured) = 0.605 W/kg



Test Laboratory: HUAWEI SAR/HAC Lab

VOG-L04 LTE Band 38 20M QPSK 1RB 50 Offset 37850CH Right Tilt with Battery2-Second Antenna

DUT: VOG-L04; Type: Smart Phone; Serial: SAR4

Communication System: UID 0, LTE-TDD (SC-FDMA, 20MHz, QPSK/16-QAM) (0); Frequency: 2580 MHz; Duty Cycle: 1:1.57943

Medium parameters used: $f = 2580$ MHz; $\sigma = 1.939$ S/m; $\epsilon_r = 39.575$; $\rho = 1000$ kg/m³

Phantom section: Right Section

DASY Configuration:

- Probe: EX3DV4 - SN7381; ConvF(7.35, 7.35, 7.35) @ 2580 MHz; Calibrated: 2018-9-28
- Sensor-Surface: 1.4mm (Mechanical Surface Detection), $z = 1.0, 31.0$
- Electronics: DAE4 Sn1236; Calibrated: 2018-7-18
- Phantom: SAM7; Type: SAM; Serial: 1594
- DASY52 52.10.1(1476); SEMCAD X 14.6.11(7439)

Configuration/Head/Area Scan (10x17x1): Measurement grid: $dx=12$ mm, $dy=12$ mm

Maximum value of SAR (measured) = 0.548 W/kg

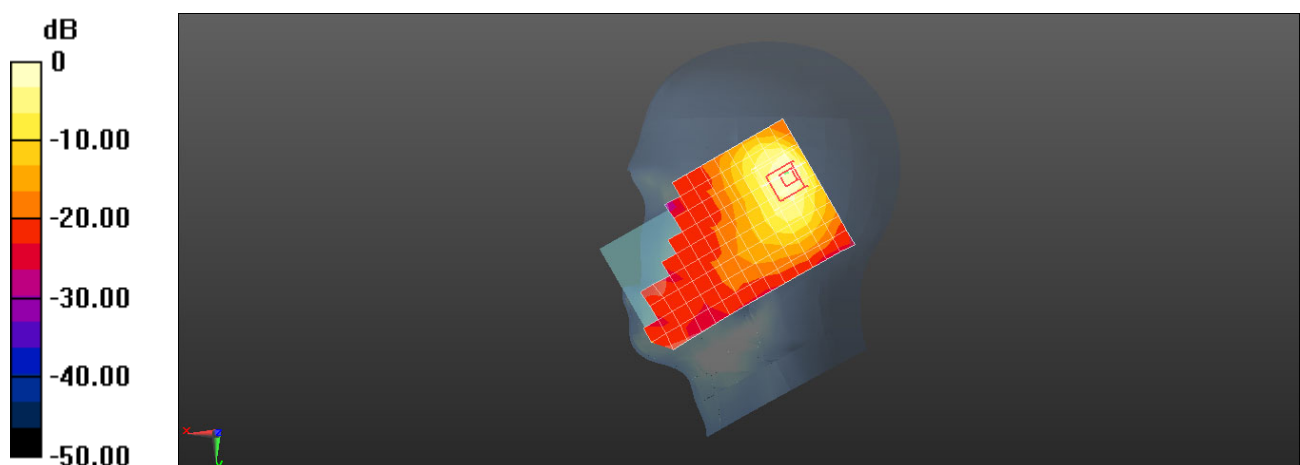
Configuration/Head/Zoom Scan (8x8x7)/Cube 0: Measurement grid: $dx=5$ mm, $dy=5$ mm, $dz=5$ mm

Reference Value = 13.63 V/m; Power Drift = -0.19 dB

Peak SAR (extrapolated) = 1.01 W/kg

SAR(1 g) = 0.430 W/kg; SAR(10 g) = 0.196 W/kg

Maximum value of SAR (measured) = 0.781 W/kg



0 dB = 0.548 W/kg = -2.61 dBW/kg

Test Laboratory: HUAWEI SAR/HAC Lab

VOG-L04 LTE Band 38 20M QPSK 1RB 50 Offset 38000CH Right Cheek-Main Antenna

DUT: VOG-L04; Type: Smart Phone; Serial: SAR4

Communication System: UID 0, LTE-TDD (SC-FDMA, 20MHz, QPSK/16-QAM) (0); Frequency: 2595 MHz; Duty Cycle: 1:1.57943

Medium parameters used: $f = 2595$ MHz; $\sigma = 1.949$ S/m; $\epsilon_r = 39.546$; $\rho = 1000$ kg/m³

Phantom section: Right Section

DASY Configuration:

- Probe: EX3DV4 - SN7381; ConvF(7.35, 7.35, 7.35) @ 2595 MHz; Calibrated: 2018-9-28
- Sensor-Surface: 1.4mm (Mechanical Surface Detection), $z = 1.0, 31.0$
- Electronics: DAE4 Sn1236; Calibrated: 2018-7-18
- Phantom: SAM7; Type: SAM; Serial: 1594
- DASY52 52.10.1(1476); SEMCAD X 14.6.11(7439)

Configuration/Head/Area Scan (10x17x1): Measurement grid: $dx=12$ mm, $dy=12$ mm
Maximum value of SAR (measured) = 0.190 W/kg

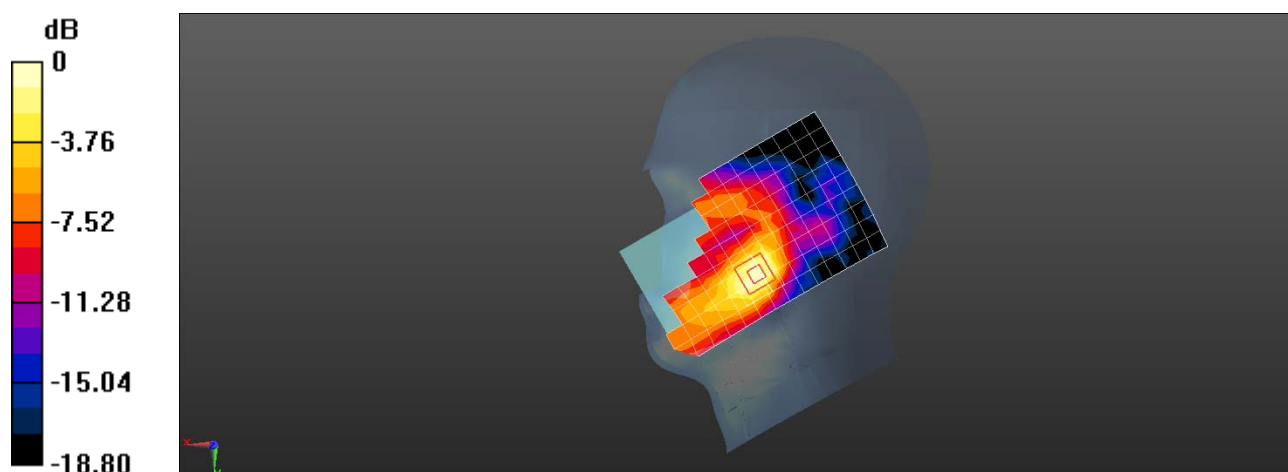
Configuration/Head/Zoom Scan (7x7x7)/Cube 0: Measurement grid: $dx=5$ mm, $dy=5$ mm, $dz=5$ mm

Reference Value = 9.182 V/m; Power Drift = 0.01 dB

Peak SAR (extrapolated) = 0.233 W/kg

SAR(1 g) = 0.139 W/kg; SAR(10 g) = 0.076 W/kg

Maximum value of SAR (measured) = 0.199 W/kg



0 dB = 0.199 W/kg = -7.01 dBW/kg

Test Laboratory: HUAWEI SAR/HAC Lab

VOG-L04 LTE Band 38 20M QPSK 1RB 0 Offset 37850CH Back Side 15mm with Battery2-Second Antenna

DUT: VOG-L04; Type: Smart Phone; Serial: SAR4

Communication System: UID 0, LTE-TDD (SC-FDMA, 20MHz, QPSK/16-QAM) (0); Frequency: 2580 MHz; Duty Cycle: 1:1.57943

Medium parameters used: $f = 2580$ MHz; $\sigma = 2.109$ S/m; $\epsilon_r = 49.938$; $\rho = 1000$ kg/m³

Phantom section: Center Section

DASY Configuration:

- Probe: EX3DV4 - SN7381; ConvF(7.53, 7.53, 7.53) @ 2580 MHz; Calibrated: 2018-9-28
- Sensor-Surface: 1.4mm (Mechanical Surface Detection), $z = 1.0, 31.0$
- Electronics: DAE4 Sn1236; Calibrated: 2018-7-18
- Phantom: Triple Flat Phantom 5.1C; Type: MFP V5.1 C; Serial: 1176/2
- DASY52 52.10.1(1476); SEMCAD X 14.6.11(7439)

Configuration/Body/Area Scan (11x16x1): Measurement grid: $dx=12$ mm, $dy=12$ mm
Maximum value of SAR (measured) = 0.264 W/kg

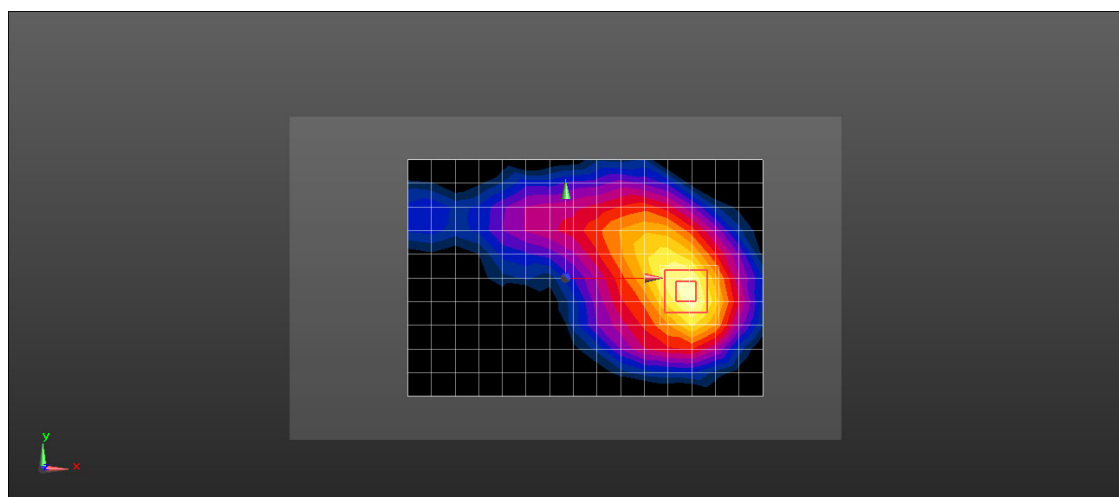
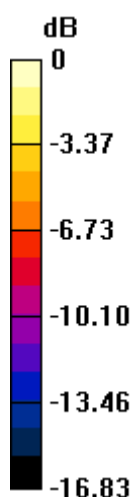
Configuration/Body/Zoom Scan (7x7x7)/Cube 0: Measurement grid: $dx=5$ mm, $dy=5$ mm, $dz=5$ mm

Reference Value = 2.724 V/m; Power Drift = -0.02 dB

Peak SAR (extrapolated) = 0.340 W/kg

SAR(1 g) = 0.184 W/kg; SAR(10 g) = 0.095 W/kg

Maximum value of SAR (measured) = 0.280 W/kg



0 dB = 0.280 W/kg = -5.53 dBW/kg

Test Laboratory: HUAWEI SAR/HAC Lab

VOG-L04 LTE Band 38 20M QPSK 1RB 50 Offset 38000CH Back Side 15mm-Main Antenna

DUT: VOG-L04; Type: Smart Phone; Serial: SAR4

Communication System: UID 0, LTE-TDD (SC-FDMA, 20MHz, QPSK/16-QAM) (0); Frequency: 2595 MHz; Duty Cycle: 1:1.57943

Medium parameters used: $f = 2595$ MHz; $\sigma = 2.122$ S/m; $\epsilon_r = 49.919$; $\rho = 1000$ kg/m³

Phantom section: Center Section

DASY Configuration:

- Probe: EX3DV4 - SN7381; ConvF(7.53, 7.53, 7.53) @ 2595 MHz; Calibrated: 2018-9-28
- Sensor-Surface: 1.4mm (Mechanical Surface Detection), $z = 1.0, 31.0$
- Electronics: DAE4 Sn1236; Calibrated: 2018-7-18
- Phantom: Triple Flat Phantom 5.1C; Type: MFP V5.1 C; Serial: 1176/2
- DASY52 52.10.1(1476); SEMCAD X 14.6.11(7439)

Configuration/Body/Area Scan (11x17x1): Measurement grid: $dx=12$ mm, $dy=12$ mm

Maximum value of SAR (measured) = 0.427 W/kg

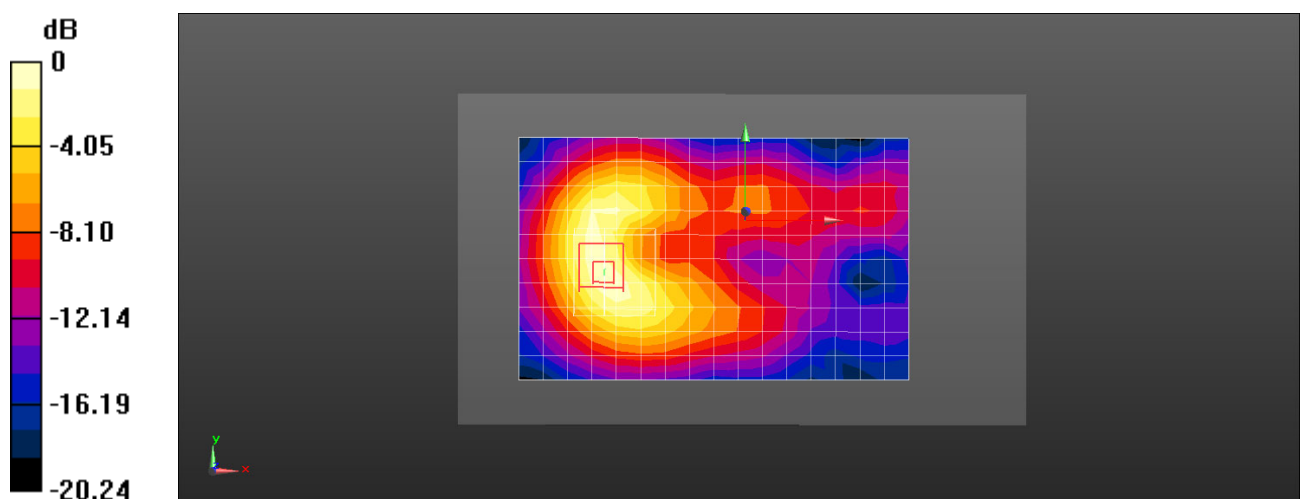
Configuration/Body/Zoom Scan (9x9x7)/Cube 0: Measurement grid: $dx=5$ mm, $dy=5$ mm, $dz=5$ mm

Reference Value = 3.979 V/m; Power Drift = 0.01 dB

Peak SAR (extrapolated) = 0.567 W/kg

SAR(1 g) = 0.312 W/kg; SAR(10 g) = 0.171 W/kg

Maximum value of SAR (measured) = 0.474 W/kg



0 dB = 0.474 W/kg = -3.24 dBW/kg

Test Laboratory: HUAWEI SAR/HAC Lab

VOG-L04 LTE Band 38 20M QPSK 1RB 0 Offset 38000CH Back Side 10mm-Second Antenna

DUT: VOG-L04; Type: Smart Phone; Serial: SAR4

Communication System: UID 0, LTE-TDD (SC-FDMA, 20MHz, QPSK/16-QAM) (0); Frequency: 2595 MHz; Duty Cycle: 1:1.57943

Medium parameters used: $f = 2595$ MHz; $\sigma = 2.175$ S/m; $\epsilon_r = 51.545$; $\rho = 1000$ kg/m³

Phantom section: Center Section

DASY Configuration:

- Probe: EX3DV4 - SN7381; ConvF(7.53, 7.53, 7.53) @ 2595 MHz; Calibrated: 2018-9-28
- Sensor-Surface: 1.4mm (Mechanical Surface Detection), $z = 1.0, 31.0$
- Electronics: DAE4 Sn1236; Calibrated: 2018-7-18
- Phantom: Triple Flat Phantom 5.1C; Type: MFP V5.1 C; Serial: 1176/2
- DASY52 52.10.1(1476); SEMCAD X 14.6.11(7439)

Configuration/Body/Area Scan (11x16x1): Measurement grid: $dx=12$ mm, $dy=12$ mm

Maximum value of SAR (measured) = 0.512 W/kg

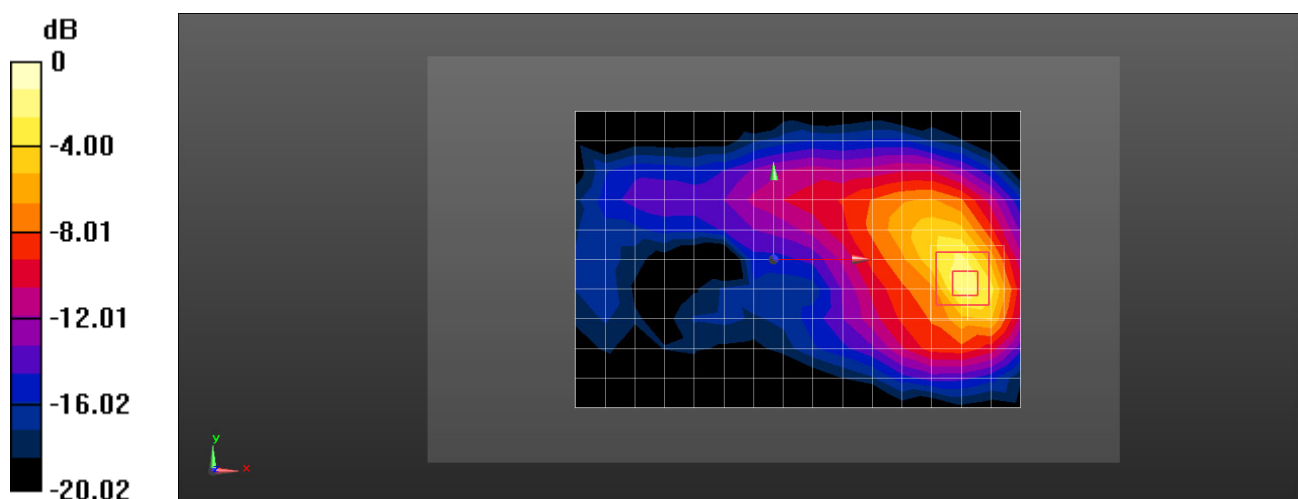
Configuration/Body/Zoom Scan (7x7x7)/Cube 0: Measurement grid: $dx=5$ mm, $dy=5$ mm, $dz=5$ mm

Reference Value = 3.376 V/m; Power Drift = -0.16 dB

Peak SAR (extrapolated) = 0.876 W/kg

SAR(1 g) = 0.439 W/kg; SAR(10 g) = 0.201 W/kg

Maximum value of SAR (measured) = 0.712 W/kg



0 dB = 0.712 W/kg = -1.48 dBW/kg

Test Laboratory: HUAWEI SAR/HAC Lab

VOG-L04 LTE Band 38 20M QPSK 1RB 50 Offset 38150CH Bottom Side 10mm with Battery2-Main Antenna

DUT: VOG-L04; Type: Smart Phone; Serial: SAR4

Communication System: UID 0, LTE-TDD (SC-FDMA, 20MHz, QPSK/16-QAM) (0); Frequency: 2610 MHz; Duty Cycle: 1:1.57943

Medium parameters used (interpolated): $f = 2610$ MHz; $\sigma = 2.135$ S/m; $\epsilon_r = 49.904$; $\rho = 1000$ kg/m³

Phantom section: Center Section

DASY Configuration:

- Probe: EX3DV4 - SN7381; ConvF(7.53, 7.53, 7.53) @ 2610 MHz; Calibrated: 2018-9-28
- Sensor-Surface: 1.4mm (Mechanical Surface Detection), $z = 1.0, 31.0$
- Electronics: DAE4 Sn1236; Calibrated: 2018-7-18
- Phantom: Triple Flat Phantom 5.1C; Type: MFP V5.1 C; Serial: 1176/2
- DASY52 52.10.1(1476); SEMCAD X 14.6.11(7439)

Configuration/Body/Area Scan (5x11x1): Measurement grid: $dx=12$ mm, $dy=12$ mm

[Info: Interpolated medium parameters used for SAR evaluation.](#)

Maximum value of SAR (measured) = 0.798 W/kg

Configuration/Body/Zoom Scan (7x7x7)/Cube 0: Measurement grid: $dx=5$ mm, $dy=5$ mm, $dz=5$ mm

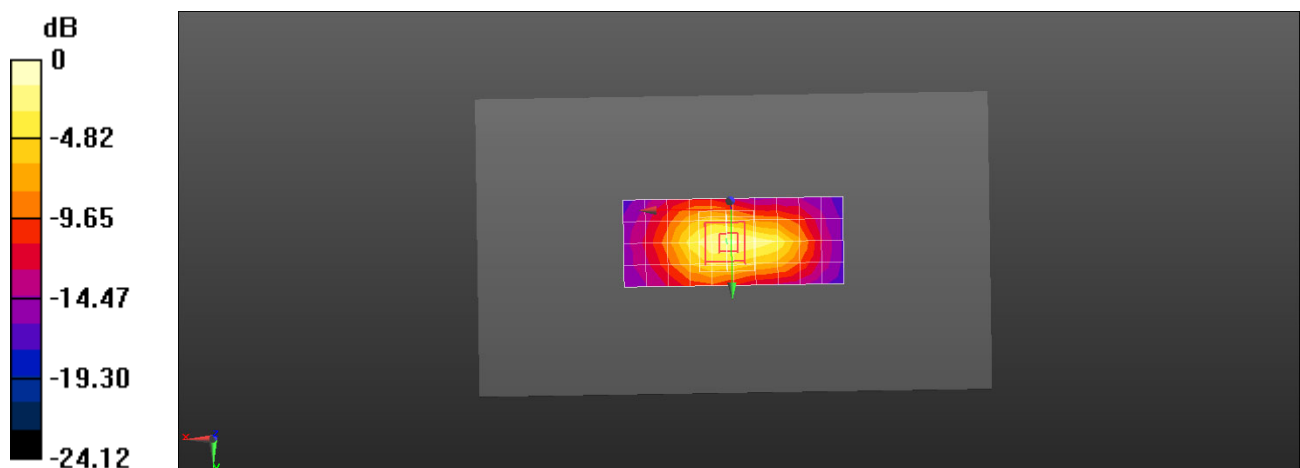
Reference Value = 20.06 V/m; Power Drift = -0.04 dB

Peak SAR (extrapolated) = 1.27 W/kg

SAR(1 g) = 0.668 W/kg; SAR(10 g) = 0.340 W/kg

[Info: Interpolated medium parameters used for SAR evaluation.](#)

Maximum value of SAR (measured) = 1.05 W/kg



0 dB = 1.05 W/kg = 0.21 dBW/kg

Test Laboratory: HUAWEI SAR/HAC Lab

VOG-L04 LTE Band 38 20M QPSK 50%RB 50 Offset 37850CH Bottom Side 0mm with Battery2-Main Antenna

DUT: VOG-L04; Type: Smart Phone; Serial: SAR4

Communication System: UID 0, LTE-TDD (SC-FDMA, 20MHz, QPSK/16-QAM) (0); Frequency: 2580 MHz; Duty Cycle: 1:1.57943

Medium parameters used: $f = 2580$ MHz; $\sigma = 2.162$ S/m; $\epsilon_r = 51.581$; $\rho = 1000$ kg/m³

Phantom section: Center Section

DASY Configuration:

- Probe: EX3DV4 - SN7381; ConvF(7.53, 7.53, 7.53) @ 2580 MHz; Calibrated: 2018-9-28
- Sensor-Surface: 1.4mm (Mechanical Surface Detection), $z = 1.0, 31.0$
- Electronics: DAE4 Sn1236; Calibrated: 2018-7-18
- Phantom: Triple Flat Phantom 5.1C; Type: MFP V5.1 C; Serial: 1176/2
- DASY52 52.10.1(1476); SEMCAD X 14.6.11(7439)

Configuration/Body/Area Scan (5x11x1): Measurement grid: $dx=12$ mm, $dy=12$ mm

Maximum value of SAR (measured) = 6.14 W/kg

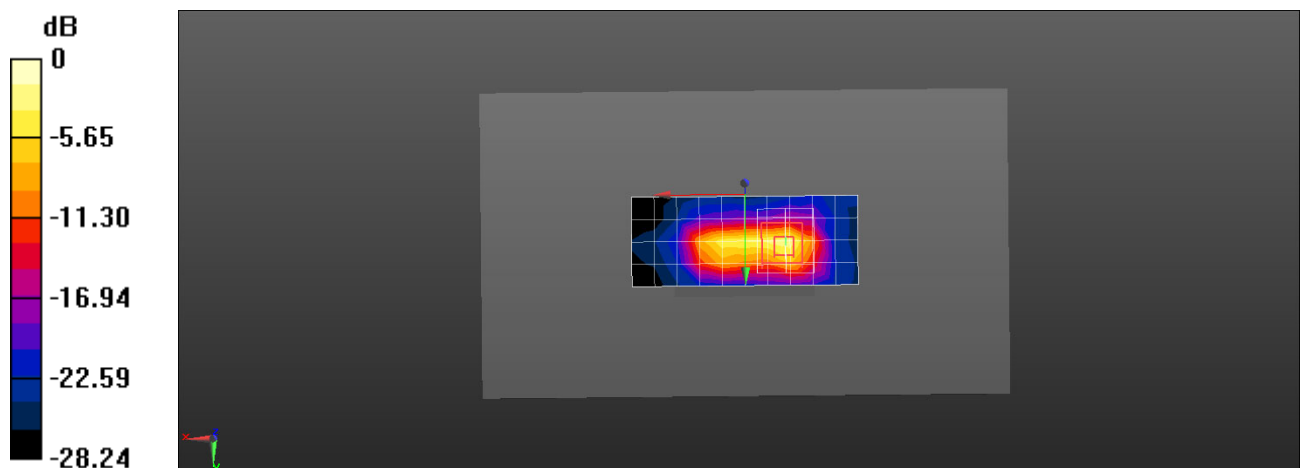
Configuration/Body/Zoom Scan (7x7x7)/Cube 0: Measurement grid: $dx=5$ mm, $dy=5$ mm, $dz=5$ mm

Reference Value = 53.60 V/m; Power Drift = 0.01 dB

Peak SAR (extrapolated) = 14.7 W/kg

SAR(1 g) = 4.76 W/kg; SAR(10 g) = 1.53 W/kg

Maximum value of SAR (measured) = 9.95 W/kg



0 dB = 9.95 W/kg = 9.98 dBW/kg

Test Laboratory: HUAWEI SAR/HAC Lab

VOG-L04 LTE Band 41 20M QPSK 50%RB 0 Offset 40140CH Right Tilt with Battery2-Second Antenna

DUT: VOG-L04; Type: Smart Phone; Serial: SAR4

Communication System: UID 0, LTE-TDD (SC-FDMA, 20MHz, QPSK/16-QAM) (0); Frequency: 2545 MHz; Duty Cycle: 1:1.57943

Medium parameters used (interpolated): $f = 2545$ MHz; $\sigma = 1.91$ S/m; $\epsilon_r = 39.621$; $\rho = 1000$ kg/m³

Phantom section: Right Section

DASY Configuration:

- Probe: EX3DV4 - SN7381; ConvF(7.35, 7.35, 7.35) @ 2545 MHz; Calibrated: 2018-9-28
- Sensor-Surface: 1.4mm (Mechanical Surface Detection), $z = 1.0, 31.0$
- Electronics: DAE4 Sn1236; Calibrated: 2018-7-18
- Phantom: SAM7; Type: SAM; Serial: 1594
- DASY52 52.10.1(1476); SEMCAD X 14.6.11(7439)

Configuration/Head/Area Scan (10x17x1): Measurement grid: $dx=12$ mm, $dy=12$ mm

Maximum value of SAR (measured) = 0.659 W/kg

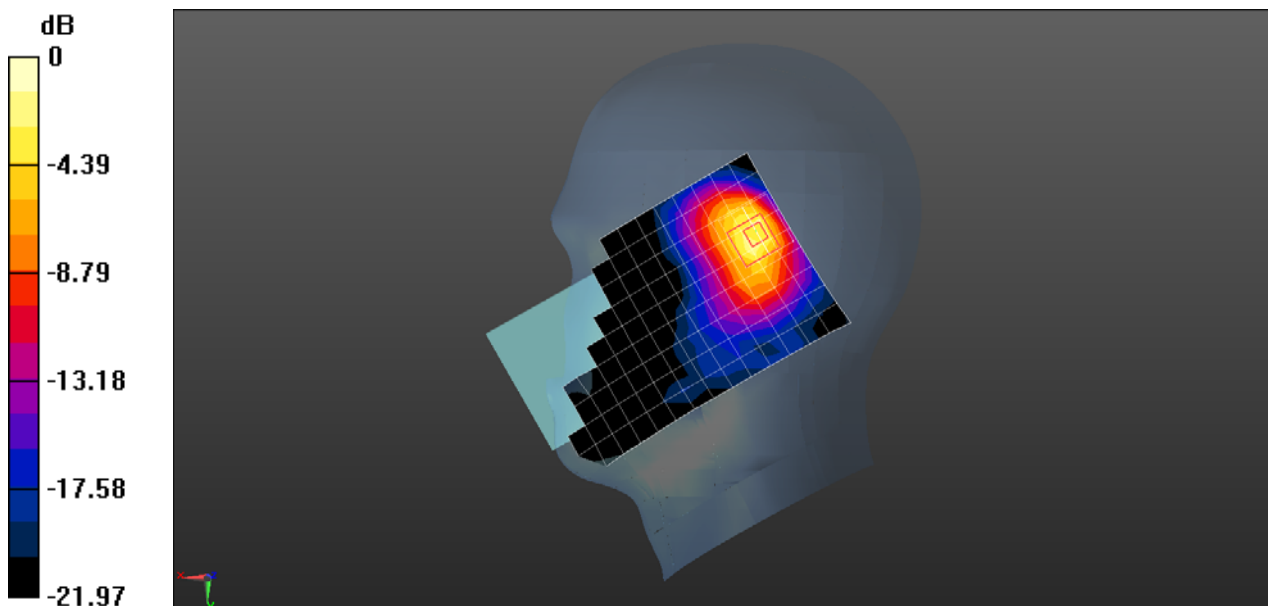
Configuration/Head/Zoom Scan (7x7x7)/Cube 0: Measurement grid: $dx=5$ mm, $dy=5$ mm, $dz=5$ mm

Reference Value = 14.58 V/m; Power Drift = -0.02 dB

Peak SAR (extrapolated) = 1.26 W/kg

SAR(1 g) = 0.522 W/kg; SAR(10 g) = 0.232 W/kg

Maximum value of SAR (measured) = 0.973 W/kg



0 dB = 0.973 W/kg = -0.12 dBW/kg

Test Laboratory: HUAWEI SAR/HAC Lab

VOG-L04 LTE Band 41 20M QPSK 1RB 50 Offset 40473CH Right Cheek-Main Antenna

DUT: VOG-L04; Type: Smart Phone; Serial: SAR4

Communication System: UID 0, LTE-TDD (SC-FDMA, 20MHz, QPSK/16-QAM) (0); Frequency: 2578.3 MHz; Duty Cycle: 1:1.57943

Medium parameters used (interpolated): $f = 2578.3$ MHz; $\sigma = 1.938$ S/m; $\epsilon_r = 39.573$; $\rho = 1000$ kg/m³

Phantom section: Right Section

DASY Configuration:

- Probe: EX3DV4 - SN7381; ConvF(7.35, 7.35, 7.35) @ 2578.3 MHz; Calibrated: 2018-9-28
- Sensor-Surface: 1.4mm (Mechanical Surface Detection), $z = 1.0, 31.0$
- Electronics: DAE4 Sn1236; Calibrated: 2018-7-18
- Phantom: SAM7; Type: SAM; Serial: 1594
- DASY52 52.10.1(1476); SEMCAD X 14.6.11(7439)

Configuration/Head/Area Scan (10x17x1): Measurement grid: $dx=12$ mm, $dy=12$ mm

[Info: Interpolated medium parameters used for SAR evaluation.](#)

Maximum value of SAR (measured) = 0.184 W/kg

Configuration/Head/Zoom Scan (7x7x7)/Cube 0: Measurement grid: $dx=5$ mm, $dy=5$ mm, $dz=5$ mm

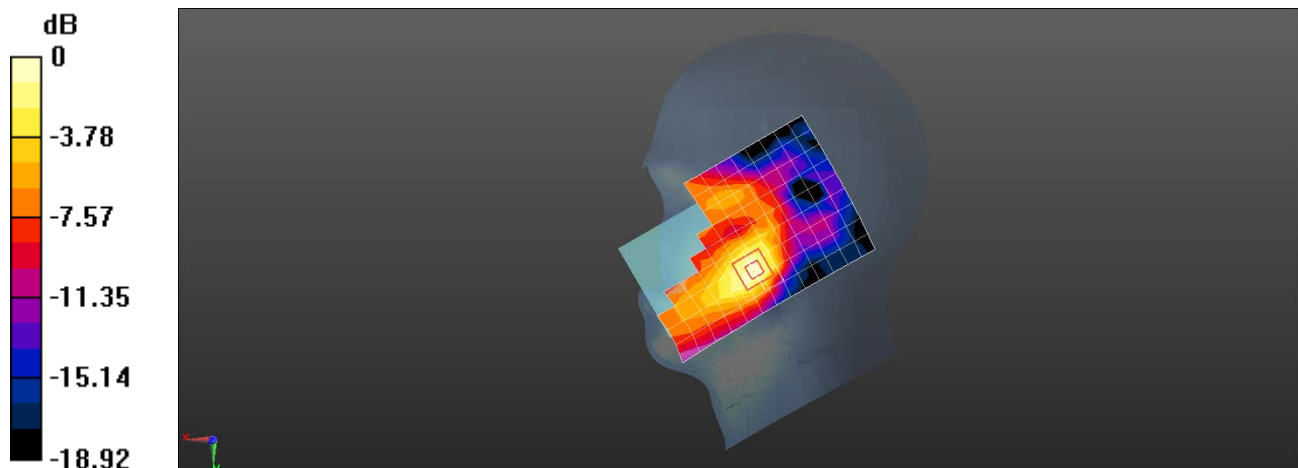
Reference Value = 1.839 V/m; Power Drift = -0.04 dB

Peak SAR (extrapolated) = 0.255 W/kg

SAR(1 g) = 0.153 W/kg; SAR(10 g) = 0.083 W/kg

[Info: Interpolated medium parameters used for SAR evaluation.](#)

Maximum value of SAR (measured) = 0.218 W/kg



0 dB = 0.218 W/kg = -6.62 dBW/kg

Test Laboratory: HUAWEI SAR/HAC Lab

VOG-L04 LTE Band 41 20M QPSK 1RB 99 Offset 40140CH Back Side 15mm-Second Antenna

DUT: VOG-L04; Type: Smart Phone; Serial: SAR2

Communication System: UID 0, LTE-TDD (SC-FDMA, 20MHz, QPSK/16-QAM) (0); Frequency: 2545 MHz; Duty Cycle: 1:1.57943

Medium parameters used (interpolated): $f = 2545$ MHz; $\sigma = 2.156$ S/m; $\epsilon_r = 50.864$; $\rho = 1000$ kg/m³

Phantom section: Flat Section

DASY Configuration:

- Probe: ES3DV3 - SN3168; ConvF(4.36, 4.36, 4.36) @ 2545 MHz; Calibrated: 2018-9-27
- Sensor-Surface: 3mm (Mechanical Surface Detection), $z = 2.0, 32.0$
- Electronics: DAE4 Sn1235; Calibrated: 2018-11-14
- Phantom: SAM4; Type: SAM; Serial: 1620
- DASY52 52.10.1(1476); SEMCAD X 14.6.11(7439)

Configuration/Body/Area Scan (11x17x1): Measurement grid: $dx=12$ mm, $dy=12$ mm

[Info: Interpolated medium parameters used for SAR evaluation.](#)

Maximum value of SAR (measured) = 0.307 W/kg

Configuration/Body/Zoom Scan (7x7x7)/Cube 0: Measurement grid: $dx=5$ mm, $dy=5$ mm, $dz=5$ mm

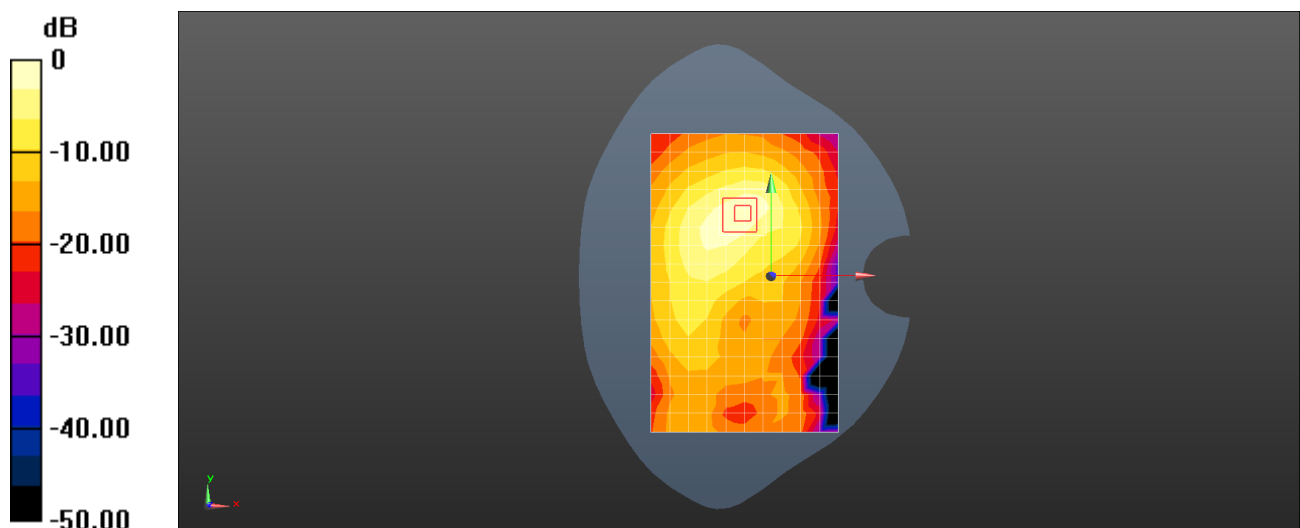
Reference Value = 4.458 V/m; Power Drift = 0.18 dB

Peak SAR (extrapolated) = 0.490 W/kg

SAR(1 g) = 0.252 W/kg; SAR(10 g) = 0.127 W/kg

[Info: Interpolated medium parameters used for SAR evaluation.](#)

Maximum value of SAR (measured) = 0.320 W/kg



Test Laboratory: HUAWEI SAR/HAC Lab

VOG-L04 LTE Band 41 20M QPSK 1RB 0 Offset 41140CH Back Side 15mm with Battery2-Main Antenna

DUT: VOG-L04; Type: Smart Phone; Serial: SAR2

Communication System: UID 0, LTE-TDD (SC-FDMA, 20MHz, QPSK/16-QAM) (0); Frequency: 2645 MHz; Duty Cycle: 1:1.57943

Medium parameters used (interpolated): $f = 2645$ MHz; $\sigma = 2.25$ S/m; $\epsilon_r = 50.635$; $\rho = 1000$ kg/m³

Phantom section: Flat Section

DASY Configuration:

- Probe: ES3DV3 - SN3168; ConvF(4.36, 4.36, 4.36) @ 2645 MHz; Calibrated: 2018-9-27
- Sensor-Surface: 3mm (Mechanical Surface Detection), $z = 2.0, 32.0$
- Electronics: DAE4 Sn1235; Calibrated: 2018-11-14
- Phantom: SAM4; Type: SAM; Serial: 1620
- DASY52 52.10.1(1476); SEMCAD X 14.6.11(7439)

Configuration/Body/Area Scan (11x17x1): Measurement grid: $dx=12$ mm, $dy=12$ mm

[Info: Interpolated medium parameters used for SAR evaluation.](#)

Maximum value of SAR (measured) = 0.364 W/kg

Configuration/Body/Zoom Scan (7x7x7)/Cube 0: Measurement grid: $dx=5$ mm, $dy=5$ mm, $dz=5$ mm

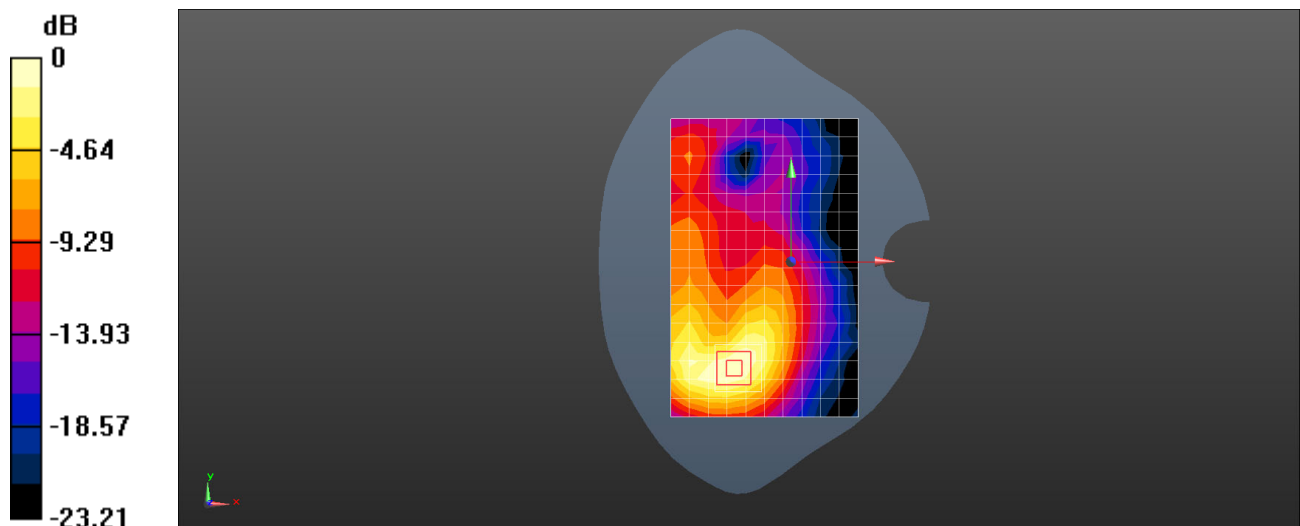
Reference Value = 4.634 V/m; Power Drift = 0.05 dB

Peak SAR (extrapolated) = 0.603 W/kg

SAR(1 g) = 0.315 W/kg; SAR(10 g) = 0.166 W/kg

[Info: Interpolated medium parameters used for SAR evaluation.](#)

Maximum value of SAR (measured) = 0.392 W/kg



0 dB = 0.392 W/kg = -4.07 dBW/kg

Test Laboratory: HUAWEI SAR/HAC Lab

VOG-L04 LTE Band 41 20M QPSK 1RB 99 Offset 40140CH Back Side 10mm with Battery2-Second Antenna

DUT: VOG-L04; Type: Smart Phone; Serial: SAR2

Communication System: UID 0, LTE-TDD (SC-FDMA, 20MHz, QPSK/16-QAM) (0); Frequency: 2545 MHz; Duty Cycle: 1:1.57943

Medium parameters used (interpolated): $f = 2545$ MHz; $\sigma = 2.156$ S/m; $\epsilon_r = 50.864$; $\rho = 1000$ kg/m³

Phantom section: Flat Section

DASY Configuration:

- Probe: ES3DV3 - SN3168; ConvF(4.36, 4.36, 4.36) @ 2545 MHz; Calibrated: 2018-9-27
- Sensor-Surface: 3mm (Mechanical Surface Detection), $z = 2.0, 32.0$
- Electronics: DAE4 Sn1235; Calibrated: 2018-11-14
- Phantom: SAM4; Type: SAM; Serial: 1620
- DASY52 52.10.1(1476); SEMCAD X 14.6.11(7439)

Configuration/Body/Area Scan (11x17x1): Measurement grid: $dx=12$ mm, $dy=12$ mm

[Info: Interpolated medium parameters used for SAR evaluation.](#)

Maximum value of SAR (measured) = 0.432 W/kg

Configuration/Body/Zoom Scan (7x7x7)/Cube 0: Measurement grid: $dx=5$ mm, $dy=5$ mm, $dz=5$ mm

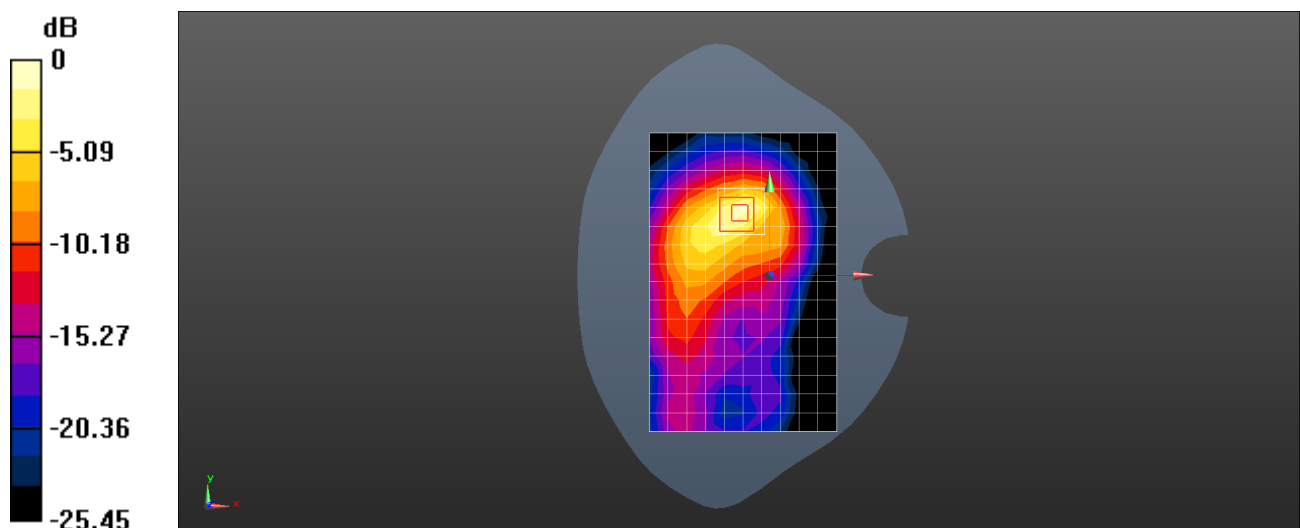
Reference Value = 4.394 V/m; Power Drift = 0.14 dB

Peak SAR (extrapolated) = 0.747 W/kg

SAR(1 g) = 0.359 W/kg; SAR(10 g) = 0.160 W/kg

[Info: Interpolated medium parameters used for SAR evaluation.](#)

Maximum value of SAR (measured) = 0.478 W/kg



Test Laboratory: HUAWEI SAR/HAC Lab

VOG-L04 LTE Band 41 20M QPSK 1RB 50 Offset 40807CH Bottom Side 10mm- Main Antenna

DUT: VOG-L04; Type: Smart Phone; Serial: SAR2

Communication System: UID 0, LTE-TDD (SC-FDMA, 20MHz, QPSK/16-QAM) (0); Frequency: 2611.7 MHz; Duty Cycle: 1:1.57943

Medium parameters used: $f = 2612$ MHz; $\sigma = 2.221$ S/m; $\epsilon_r = 50.715$; $\rho = 1000$ kg/m³

Phantom section: Flat Section

DASY Configuration:

- Probe: ES3DV3 - SN3168; ConvF(4.36, 4.36, 4.36) @ 2611.7 MHz; Calibrated: 2018-9-27
- Sensor-Surface: 3mm (Mechanical Surface Detection), $z = 2.0, 32.0$
- Electronics: DAE4 Sn1235; Calibrated: 2018-11-14
- Phantom: SAM4; Type: SAM; Serial: 1620
- DASY52 52.10.1(1476); SEMCAD X 14.6.11(7439)

Configuration/Body/Area Scan (6x11x1): Measurement grid: $dx=12$ mm, $dy=12$ mm

Maximum value of SAR (measured) = 0.809 W/kg

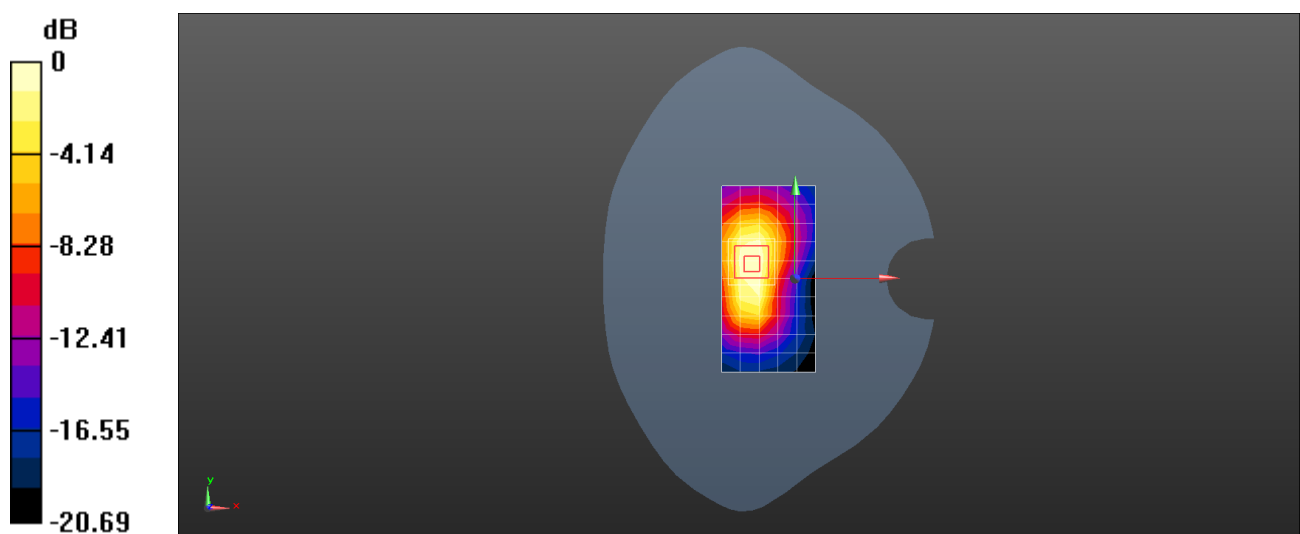
Configuration/Body/Zoom Scan (7x7x7)/Cube 0: Measurement grid: $dx=5$ mm, $dy=5$ mm, $dz=5$ mm

Reference Value = 11.90 V/m; Power Drift = 0.10 dB

Peak SAR (extrapolated) = 1.51 W/kg

SAR(1 g) = 0.755 W/kg; SAR(10 g) = 0.370 W/kg

Maximum value of SAR (measured) = 0.973 W/kg



0 dB = 0.809 W/kg = -0.92 dBW/kg

Test Laboratory: HUAWEI SAR/HAC Lab

VOG-L04 LTE Band 41 20M QPSK 1RB 50 Offset 40807CH Bottom Side 0mm- Main Antenna

DUT: VOG-L04; Type: Smart Phone; Serial: SAR2

Communication System: UID 0, LTE-TDD (SC-FDMA, 20MHz, QPSK/16-QAM) (0); Frequency: 2611.7 MHz; Duty Cycle: 1:1.57943

Medium parameters used: $f = 2612$ MHz; $\sigma = 2.221$ S/m; $\epsilon_r = 50.715$; $\rho = 1000$ kg/m³

Phantom section: Flat Section

DASY Configuration:

- Probe: ES3DV3 - SN3168; ConvF(4.36, 4.36, 4.36) @ 2611.7 MHz; Calibrated: 2018-9-27
- Sensor-Surface: 3mm (Mechanical Surface Detection), $z = 2.0, 32.0$
- Electronics: DAE4 Sn1235; Calibrated: 2018-11-14
- Phantom: SAM4; Type: SAM; Serial: 1620
- DASY52 52.10.1(1476); SEMCAD X 14.6.11(7439)

Configuration/Body/Area Scan (6x11x1): Measurement grid: $dx=12$ mm, $dy=12$ mm

Maximum value of SAR (measured) = 8.49 W/kg

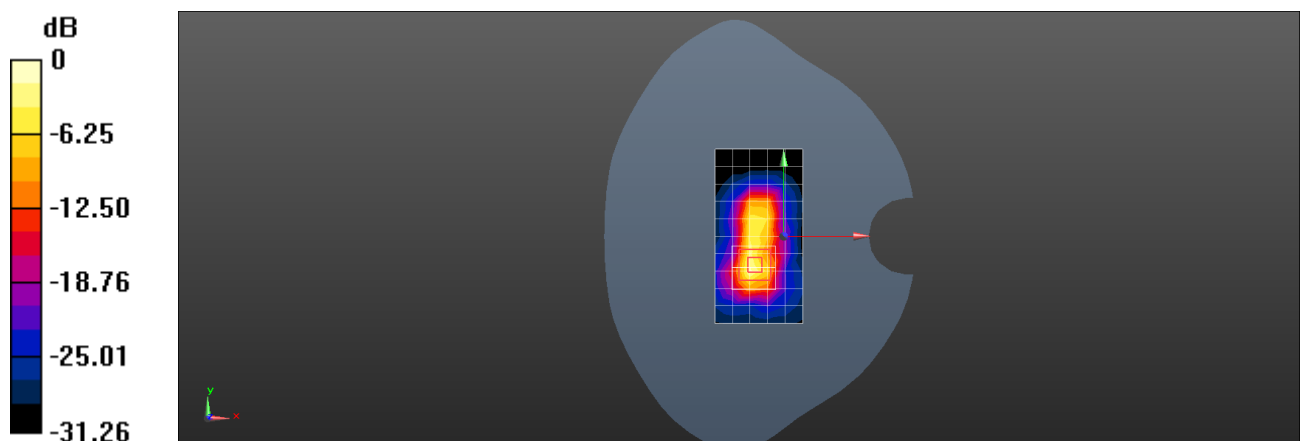
Configuration/Body/Zoom Scan (7x7x7)/Cube 0: Measurement grid: $dx=5$ mm, $dy=5$ mm, $dz=5$ mm

Reference Value = 60.20 V/m; Power Drift = 0.12 dB

Peak SAR (extrapolated) = 23.6 W/kg

SAR(1 g) = 7.71 W/kg; SAR(10 g) = 2.44 W/kg

Maximum value of SAR (measured) = 11.9 W/kg



0 dB = 11.9 W/kg = 10.76 dBW/kg

Test Laboratory: HUAWEI SAR/HAC Lab

VOG-L04 LTE Band 66 20M QPSK 1RB 50 Offset 132072CH Right Tilt-Second Antenna

DUT: VOG-L04; Type: Smart Phone; Serial: SAR5

Communication System: UID 0, LTE-FDD (SC-FDMA, 20MHz, QPSK/16-QAM) (0); Frequency: 1720 MHz; Duty Cycle: 1:1

Medium parameters used: $f = 1720$ MHz; $\sigma = 1.352$ S/m; $\epsilon_r = 38.825$; $\rho = 1000$ kg/m³

Phantom section: Right Section

DASY Configuration:

- Probe: EX3DV4 - SN3743; ConvF(8.36, 8.36, 8.36) @ 1720 MHz; Calibrated: 2018-11-19
- Sensor-Surface: 1.4mm (Mechanical Surface Detection), $z = 1.0, 31.0$
- Electronics: DAE4 Sn1554; Calibrated: 2018-6-5
- Phantom: SAM8; Type: SAM; Serial: 1940
- DASY52 52.10.1(1476); SEMCAD X 14.6.11(7439)

Configuration/Head/Area Scan (9x14x1): Measurement grid: $dx=15$ mm, $dy=15$ mm

Maximum value of SAR (measured) = 0.624 W/kg

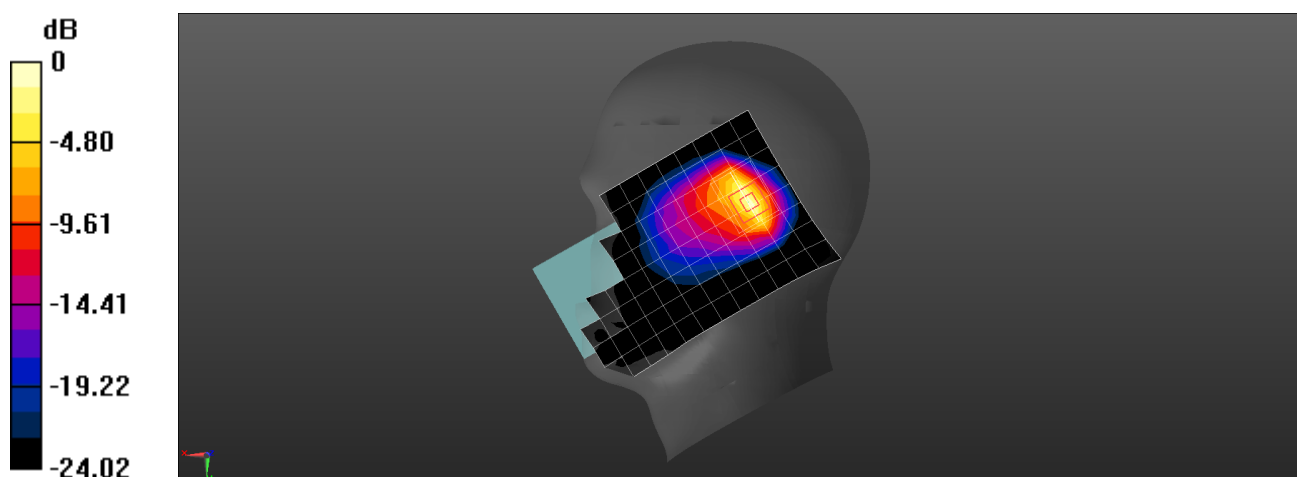
Configuration/Head/Zoom Scan (6x5x7)/Cube 0: Measurement grid: $dx=8$ mm, $dy=8$ mm, $dz=5$ mm

Reference Value = 10.32 V/m; Power Drift = -0.00 dB

Peak SAR (extrapolated) = 0.855 W/kg

SAR(1 g) = 0.422 W/kg; SAR(10 g) = 0.199 W/kg

Maximum value of SAR (measured) = 0.714 W/kg



0 dB = 0.714 W/kg = -1.46 dBW/kg

Test Laboratory: HUAWEI SAR/HAC Lab

VOG-L04 LTE Band 66 20M QPSK 1RB 0 Offset 132072CH Right Cheek-Main Antenna

DUT: VOG-L04; Type: Smart Phone; Serial: SAR5

Communication System: UID 0, LTE-FDD (SC-FDMA, 20MHz, QPSK/16-QAM) (0); Frequency: 1720 MHz; Duty Cycle: 1:1

Medium parameters used: $f = 1720$ MHz; $\sigma = 1.352$ S/m; $\epsilon_r = 38.825$; $\rho = 1000$ kg/m³

Phantom section: Right Section

DASY Configuration:

- Probe: EX3DV4 - SN3743; ConvF(8.36, 8.36, 8.36) @ 1720 MHz; Calibrated: 2018-11-19
- Sensor-Surface: 1.4mm (Mechanical Surface Detection), $z = 1.0, 31.0$
- Electronics: DAE4 Sn1554; Calibrated: 2018-6-5
- Phantom: SAM8; Type: SAM; Serial: 1940
- DASY52 52.10.1(1476); SEMCAD X 14.6.11(7439)

Configuration/Head/Area Scan (9x14x1): Measurement grid: $dx=15$ mm, $dy=15$ mm

Maximum value of SAR (measured) = 0.241 W/kg

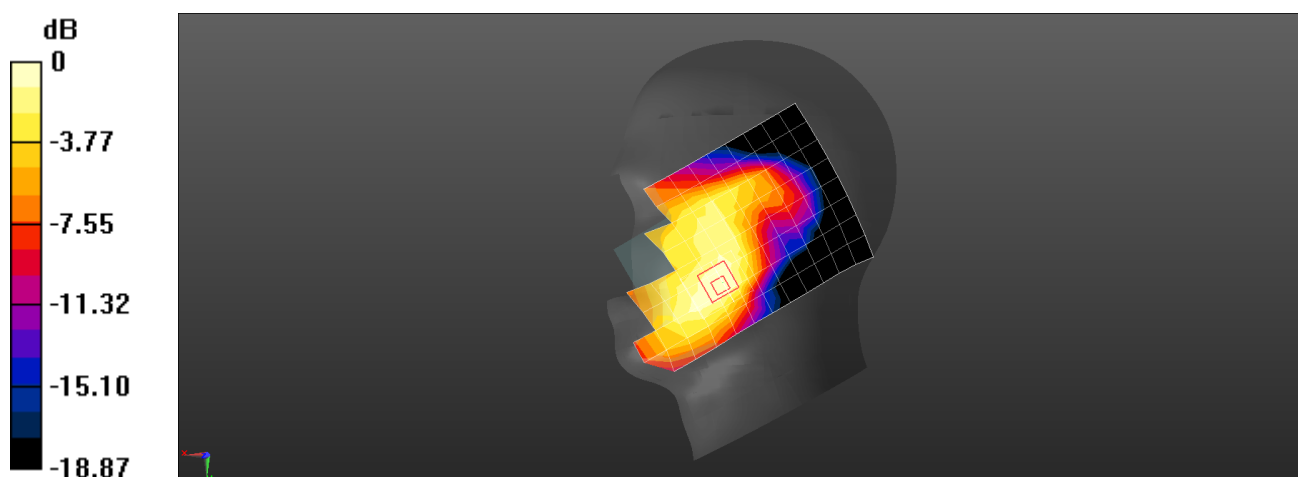
Configuration/Head/Zoom Scan (5x6x7)/Cube 0: Measurement grid: $dx=8$ mm, $dy=8$ mm, $dz=5$ mm

Reference Value = 5.941 V/m; Power Drift = 0.15 dB

Peak SAR (extrapolated) = 0.293 W/kg

SAR(1 g) = 0.193 W/kg; SAR(10 g) = 0.128 W/kg

Maximum value of SAR (measured) = 0.256 W/kg



0 dB = 0.256 W/kg = -5.92 dBW/kg

Test Laboratory: HUAWEI SAR/HAC Lab

VOG-L04 LTE Band 66 20M QPSK 1RB 99 Offset 132072CH Front Side 15mm-Second Antenna

DUT: VOG-L04; Type: Smart Phone; Serial: SAR2

Communication System: UID 0, LTE-FDD (SC-FDMA, 20MHz, QPSK/16-QAM) (0); Frequency: 1720 MHz; Duty Cycle: 1:1

Medium parameters used: $f = 1720$ MHz; $\sigma = 1.465$ S/m; $\epsilon_r = 53.229$; $\rho = 1000$ kg/m³

Phantom section: Flat Section

DASY Configuration:

- Probe: ES3DV3 - SN3168; ConvF(5.02, 5.02, 5.02) @ 1720 MHz; Calibrated: 2018-9-27
- Sensor-Surface: 3mm (Mechanical Surface Detection), $z = 2.0, 32.0$
- Electronics: DAE4 Sn1235; Calibrated: 2018-11-14
- Phantom: SAM4; Type: SAM; Serial: 1620
- DASY52 52.10.1(1476); SEMCAD X 14.6.11(7439)

Configuration/Body/Area Scan (8x14x1): Measurement grid: $dx=15$ mm, $dy=15$ mm

Maximum value of SAR (measured) = 0.155 W/kg

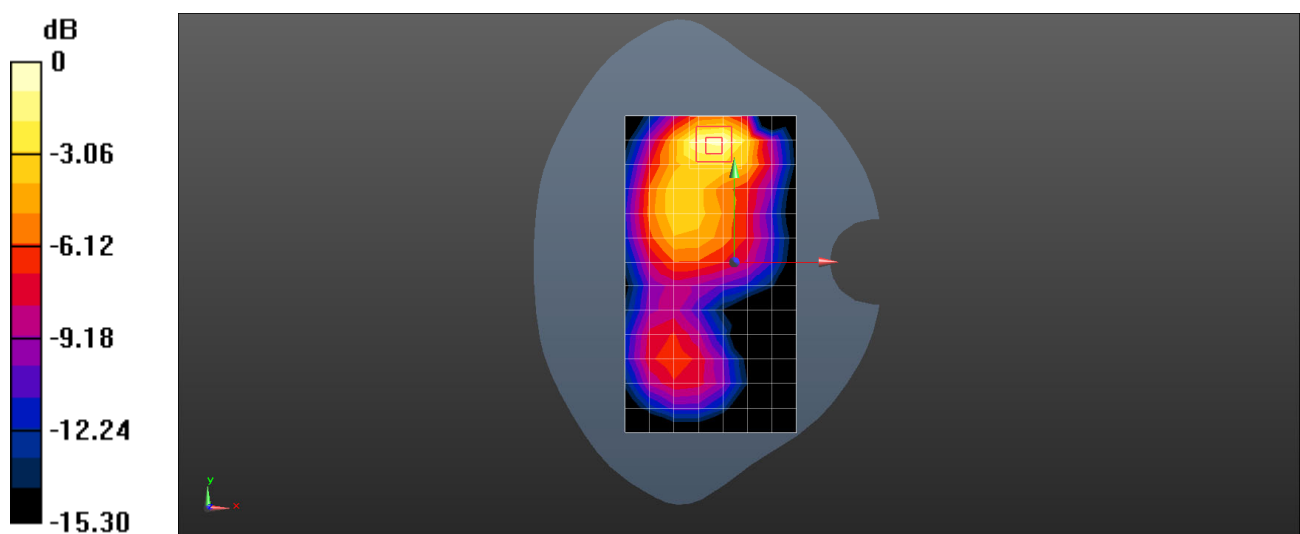
Configuration/Body/Zoom Scan (5x5x7)/Cube 0: Measurement grid: $dx=8$ mm, $dy=8$ mm, $dz=5$ mm

Reference Value = 5.403 V/m; Power Drift = 0.10 dB

Peak SAR (extrapolated) = 0.214 W/kg

SAR(1 g) = 0.141 W/kg; SAR(10 g) = 0.082 W/kg

Maximum value of SAR (measured) = 0.169 W/kg



0 dB = 0.169 W/kg = -7.71 dBW/kg

Test Laboratory: HUAWEI SAR/HAC Lab

VOG-L04 LTE Band 66 20M QPSK 1RB 99 Offset 132572CH Back Side 15mm- Main Antenna

DUT: VOG-L04; Type: Smart Phone; Serial: SAR2

Communication System: UID 0, LTE-FDD (SC-FDMA, 20MHz, QPSK/16-QAM) (0); Frequency: 1770 MHz; Duty Cycle: 1:1

Medium parameters used: $f = 1770$ MHz; $\sigma = 1.503$ S/m; $\epsilon_r = 53.152$; $\rho = 1000$ kg/m³

Phantom section: Flat Section

DASY Configuration:

- Probe: ES3DV3 - SN3168; ConvF(5.02, 5.02, 5.02) @ 1770 MHz; Calibrated: 2018-9-27
- Sensor-Surface: 3mm (Mechanical Surface Detection), $z = 2.0, 32.0$
- Electronics: DAE4 Sn1235; Calibrated: 2018-11-14
- Phantom: SAM4; Type: SAM; Serial: 1620
- DASY52 52.10.1(1476); SEMCAD X 14.6.11(7439)

Configuration/Body/Area Scan (8x14x1): Measurement grid: $dx=15$ mm, $dy=15$ mm

Maximum value of SAR (measured) = 0.414 W/kg

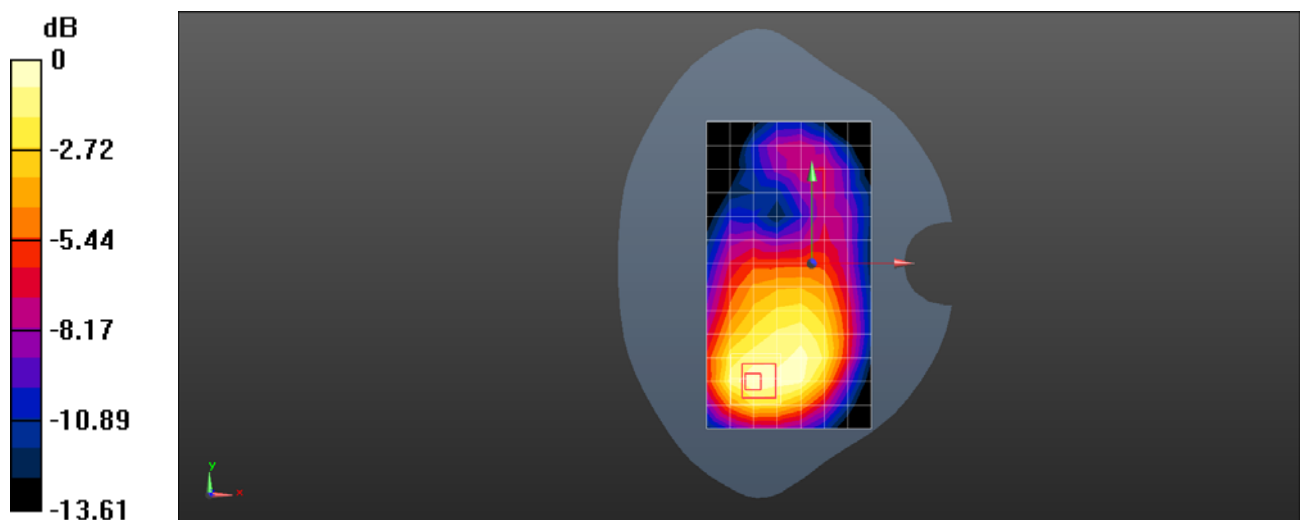
Configuration/Body/Zoom Scan (5x5x7)/Cube 0: Measurement grid: $dx=8$ mm, $dy=8$ mm, $dz=5$ mm

Reference Value = 9.892 V/m; Power Drift = -0.03 dB

Peak SAR (extrapolated) = 0.512 W/kg

SAR(1 g) = 0.345 W/kg; SAR(10 g) = 0.216 W/kg

Maximum value of SAR (measured) = 0.397 W/kg



0 dB = 0.397 W/kg = -4.01 dBW/kg

Test Laboratory: HUAWEI SAR/HAC Lab

VOG-L04 LTE Band 66 20M QPSK 50%RB 0 Offset 132572CH Top Side 10mm-Second Antenna

DUT: VOG-L04; Type: Smart Phone; Serial: SAR2

Communication System: UID 0, LTE-FDD (SC-FDMA, 20MHz, QPSK/16-QAM) (0); Frequency: 1770 MHz; Duty Cycle: 1:1

Medium parameters used: $f = 1770$ MHz; $\sigma = 1.503$ S/m; $\epsilon_r = 53.152$; $\rho = 1000$ kg/m³

Phantom section: Flat Section

DASY Configuration:

- Probe: ES3DV3 - SN3168; ConvF(5.02, 5.02, 5.02) @ 1770 MHz; Calibrated: 2018-9-27
- Sensor-Surface: 3mm (Mechanical Surface Detection), $z = 2.0, 32.0$
- Electronics: DAE4 Sn1235; Calibrated: 2018-11-14
- Phantom: SAM4; Type: SAM; Serial: 1620
- DASY52 52.10.1(1476); SEMCAD X 14.6.11(7439)

Configuration/Body/Area Scan (5x9x1): Measurement grid: $dx=15$ mm, $dy=15$ mm

Maximum value of SAR (measured) = 0.269 W/kg

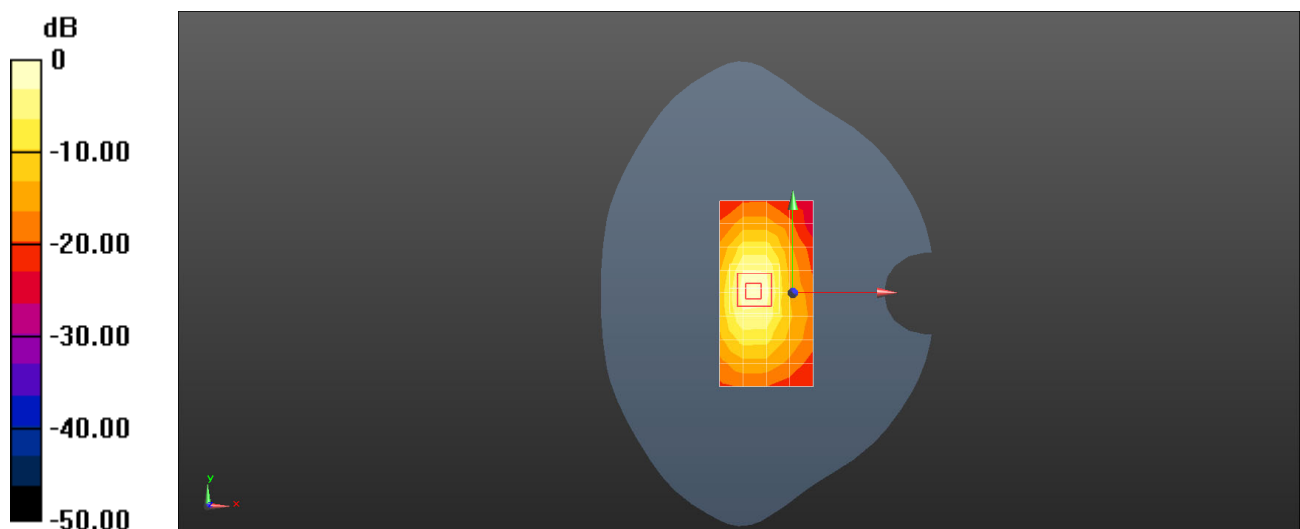
Configuration/Body/Zoom Scan (5x5x7)/Cube 0: Measurement grid: $dx=8$ mm, $dy=8$ mm, $dz=5$ mm

Reference Value = 13.60 V/m; Power Drift = 0.04 dB

Peak SAR (extrapolated) = 0.584 W/kg

SAR(1 g) = 0.342 W/kg; SAR(10 g) = 0.173 W/kg

Maximum value of SAR (measured) = 0.404 W/kg



0 dB = 0.404 W/kg = -3.94 dBW/kg

Test Laboratory: HUAWEI SAR/HAC Lab

VOG-L04 LTE Band 66 20M QPSK 50%RB 0 Offset 132072CH Bottom Side 10mm- Main Antenna

DUT: VOG-L04; Type: Smart Phone; Serial: SAR2

Communication System: UID 0, LTE-FDD (SC-FDMA, 20MHz, QPSK/16-QAM) (0); Frequency: 1720 MHz; Duty Cycle: 1:1

Medium parameters used: $f = 1720$ MHz; $\sigma = 1.468$ S/m; $\epsilon_r = 52.22$; $\rho = 1000$ kg/m³

Phantom section: Flat Section

DASY Configuration:

- Probe: ES3DV3 - SN3168; ConvF(5.02, 5.02, 5.02) @ 1720 MHz; Calibrated: 2018-9-27
- Sensor-Surface: 3mm (Mechanical Surface Detection), $z = 2.0, 32.0$
- Electronics: DAE4 Sn1235; Calibrated: 2018-11-14
- Phantom: SAM4; Type: SAM; Serial: 1620
- DASY52 52.10.1(1476); SEMCAD X 14.6.11(7439)

Configuration/Body/Area Scan (5x9x1): Measurement grid: $dx=15$ mm, $dy=15$ mm

Maximum value of SAR (measured) = 0.694 W/kg

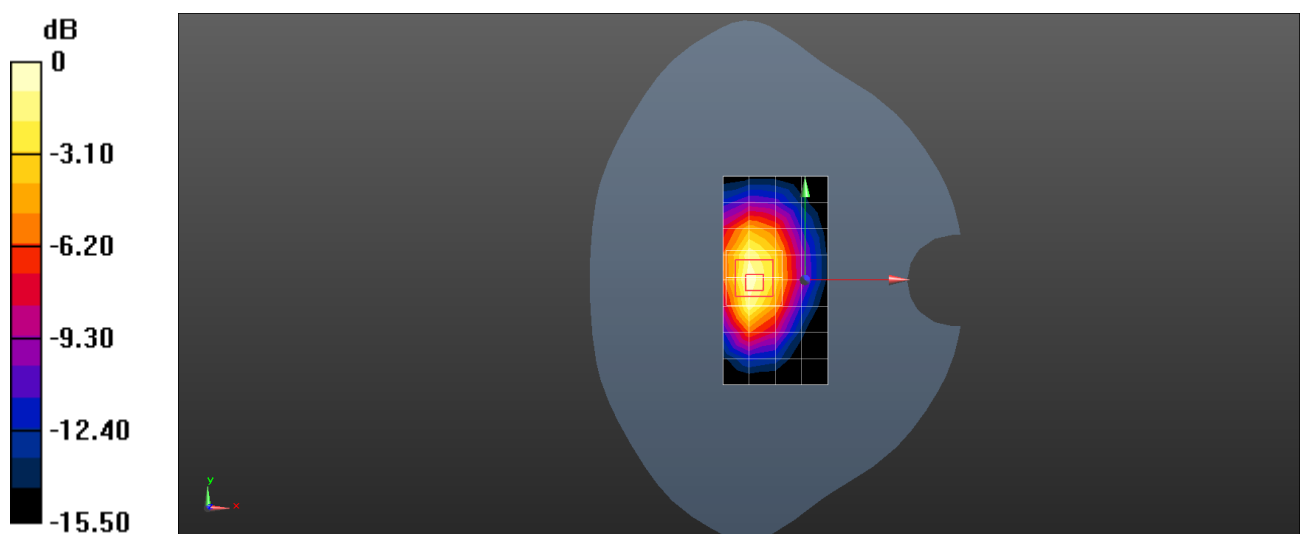
Configuration/Body/Zoom Scan (5x5x7)/Cube 0: Measurement grid: $dx=8$ mm, $dy=8$ mm, $dz=5$ mm

Reference Value = 16.10 V/m; Power Drift = 0.19 dB

Peak SAR (extrapolated) = 0.924 W/kg

SAR(1 g) = 0.599 W/kg; SAR(10 g) = 0.347 W/kg

Maximum value of SAR (measured) = 0.724 W/kg



0 dB = 0.724 W/kg = -1.40 dBW/kg

Test Laboratory: HUAWEI SAR/HAC Lab

VOG-L04 LTE Band 66 20M QPSK 50%RB 0 Offset 132322CH Bottom Side 0mm- Main Antenna

DUT: VOG-L04; Type: Smart Phone; Serial: SAR2

Communication System: UID 0, LTE-FDD (SC-FDMA, 20MHz, QPSK/16-QAM) (0); Frequency: 1745 MHz; Duty Cycle: 1:1

Medium parameters used (interpolated): $f = 1745$ MHz; $\sigma = 1.479$ S/m; $\epsilon_r = 52.221$; $\rho = 1000$ kg/m³

Phantom section: Flat Section

DASY Configuration:

- Probe: ES3DV3 - SN3168; ConvF(5.02, 5.02, 5.02) @ 1745 MHz; Calibrated: 2018-9-27
- Sensor-Surface: 3mm (Mechanical Surface Detection), $z = 2.0, 32.0$
- Electronics: DAE4 Sn1235; Calibrated: 2018-11-14
- Phantom: SAM4; Type: SAM; Serial: 1620
- DASY52 52.10.1(1476); SEMCAD X 14.6.11(7439)

Configuration/Body/Area Scan (5x9x1): Measurement grid: $dx=15$ mm, $dy=15$ mm

[Info: Interpolated medium parameters used for SAR evaluation.](#)

Maximum value of SAR (measured) = 5.74 W/kg

Configuration/Body/Zoom Scan (5x5x7)/Cube 0: Measurement grid: $dx=8$ mm, $dy=8$ mm, $dz=5$ mm

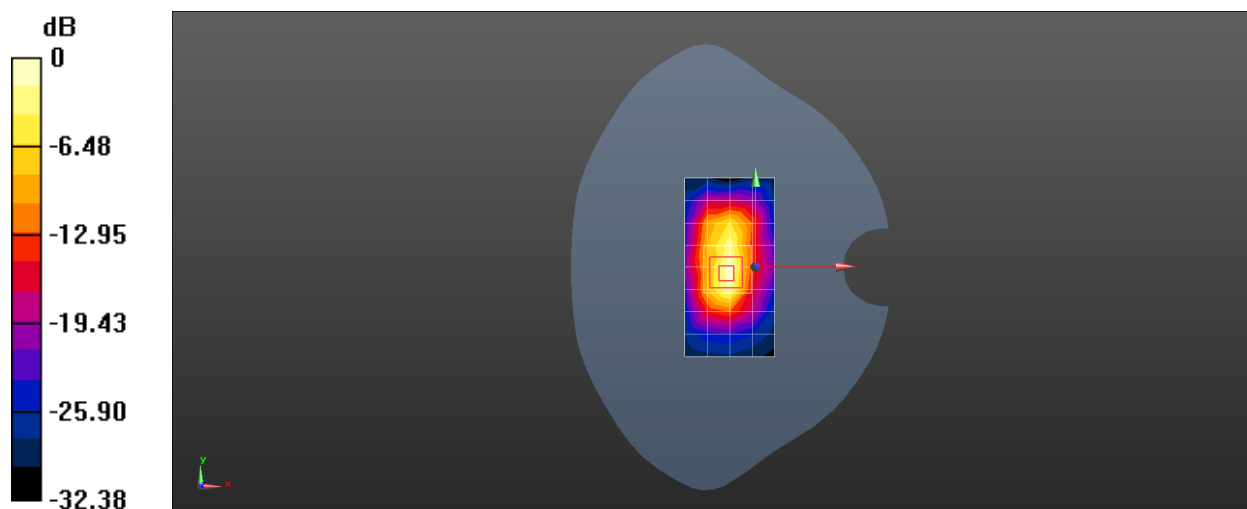
Reference Value = 66.12 V/m; Power Drift = 0.03 dB

Peak SAR (extrapolated) = 9.96 W/kg

SAR(1 g) = 4.53 W/kg; SAR(10 g) = 1.91 W/kg

[Info: Interpolated medium parameters used for SAR evaluation.](#)

Maximum value of SAR (measured) = 6.51 W/kg



0 dB = 5.74 W/kg = 7.59 dBW/kg

Test Laboratory: HUAWEI SAR/HAC Lab

VOG-L04 WiFi 2.4G 802.11b 6CH Left Tilt-Core0

DUT: VOG-L04; Type: Smart Phone; Serial: SAR6

Communication System: UID 0, WiFi(802.11a/b/g/n) (0); Frequency: 2437 MHz; Duty Cycle: 1:1.01
Medium parameters used (interpolated): $f = 2437$ MHz; $\sigma = 1.792$ S/m; $\epsilon_r = 38.031$; $\rho = 1000$ kg/m³
Phantom section: Left Section

DASY Configuration:

- Probe: EX3DV4 - SN3736; ConvF(7.13, 7.13, 7.13) @ 2437 MHz; Calibrated: 2018-4-27
- Sensor-Surface: 1.4mm (Mechanical Surface Detection), $z = 1.0, 31.0$
- Electronics: DAE4 Sn851; Calibrated: 2018-7-18
- Phantom: SAM9; Type: SAM; Serial: 1958
- DASY52 52.10.1(1476); SEMCAD X 14.6.11(7439)

Configuration/Head/Area Scan (10x16x1): Measurement grid: $dx=12$ mm, $dy=12$ mm

[Info: Interpolated medium parameters used for SAR evaluation.](#)

Maximum value of SAR (measured) = 0.850 W/kg

Configuration/Head/Zoom Scan (7x7x7)/Cube 0: Measurement grid: $dx=5$ mm, $dy=5$ mm, $dz=5$ mm

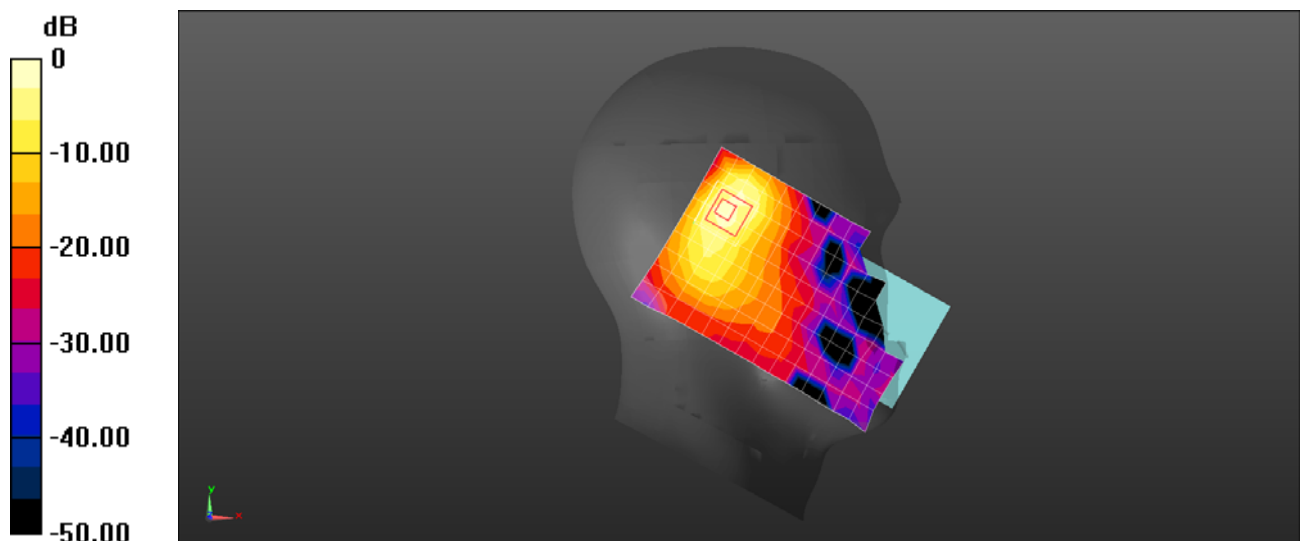
Reference Value = 9.243 V/m; Power Drift = 0.03 dB

Peak SAR (extrapolated) = 1.49 W/kg

SAR(1 g) = 0.582 W/kg; SAR(10 g) = 0.227 W/kg

[Info: Interpolated medium parameters used for SAR evaluation.](#)

Maximum value of SAR (measured) = 0.991 W/kg



0 dB = 0.850 W/kg = -0.71 dBW/kg

Test Laboratory: HUAWEI SAR/HAC Lab

VOG-L04 WiFi 2.4G 802.11b 1CH Right Cheek-Core1

DUT: VOG-L04; Type: Smart Phone; Serial: SAR6

Communication System: UID 0, WiFi(802.11a/b/g/n) (0); Frequency: 2412 MHz; Duty Cycle: 1:1.01

Medium parameters used: $f = 2412$ MHz; $\sigma = 1.771$ S/m; $\epsilon_r = 38.057$; $\rho = 1000$ kg/m³

Phantom section: Right Section

DASY Configuration:

- Probe: EX3DV4 - SN3736; ConvF(7.13, 7.13, 7.13) @ 2412 MHz; Calibrated: 2018-4-27
- Sensor-Surface: 1.4mm (Mechanical Surface Detection), $z = 1.0, 31.0$
- Electronics: DAE4 Sn851; Calibrated: 2018-7-18
- Phantom: SAM9; Type: SAM; Serial: 1958
- DASY52 52.10.1(1476); SEMCAD X 14.6.11(7439)

Configuration/Head/Area Scan (10x16x1): Measurement grid: $dx=12$ mm, $dy=12$ mm

Maximum value of SAR (measured) = 0.0312 W/kg

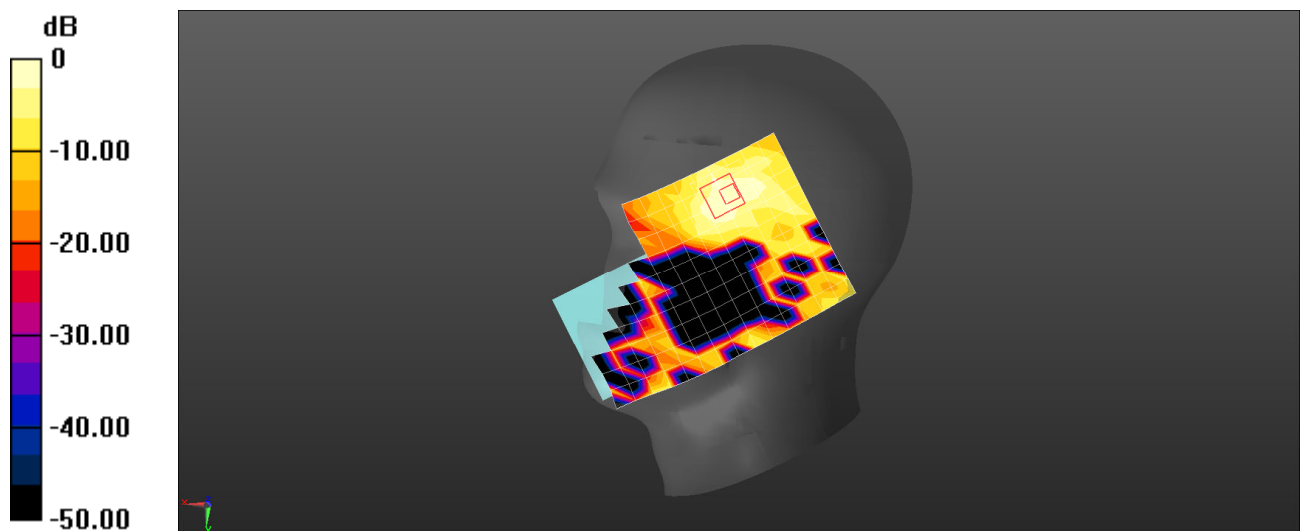
Configuration/Head/Zoom Scan (11x10x7)/Cube 0: Measurement grid: $dx=5$ mm, $dy=5$ mm, $dz=5$ mm

Reference Value = 3.626 V/m; Power Drift = -0.04 dB

Peak SAR (extrapolated) = 0.0390 W/kg

SAR(1 g) = 0.017 W/kg; SAR(10 g) = 0.00676 W/kg

Maximum value of SAR (measured) = 0.0311 W/kg



0 dB = 0.0312 W/kg = -15.06 dBW/kg

Test Laboratory: HUAWEI SAR/HAC Lab

VOG-L04 WiFi 2.4G 802.11b 6CH Front Side 15mm with Battery2-Core0

DUT: VOG-L04; Type: Smart Phone; Serial: SAR3

Communication System: UID 0, WiFi(802.11a/b/g/n) (0); Frequency: 2437 MHz; Duty Cycle: 1:1.01
Medium parameters used (interpolated): $f = 2437$ MHz; $\sigma = 2.022$ S/m; $\epsilon_r = 53.806$; $\rho = 1000$ kg/m³
Phantom section: Flat Section

DASY Configuration:

- Probe: EX3DV4 - SN3744; ConvF(7.39, 7.39, 7.39) @ 2437 MHz; Calibrated: 2018-7-25
- Sensor-Surface: 1.4mm (Mechanical Surface Detection), $z = 1.0, 31.0$
- Electronics: DAE4 Sn852; Calibrated: 2018-4-23
- Phantom: SAM5; Type: SAM; Serial: 1892
- DASY52 52.10.1(1476); SEMCAD X 14.6.11(7439)

Configuration/Body/Area Scan (11x16x1): Measurement grid: $dx=12$ mm, $dy=12$ mm

[Info: Interpolated medium parameters used for SAR evaluation.](#)

Maximum value of SAR (measured) = 0.116 W/kg

Configuration/Body/Zoom Scan (7x7x7)/Cube 0: Measurement grid: $dx=5$ mm, $dy=5$ mm, $dz=5$ mm

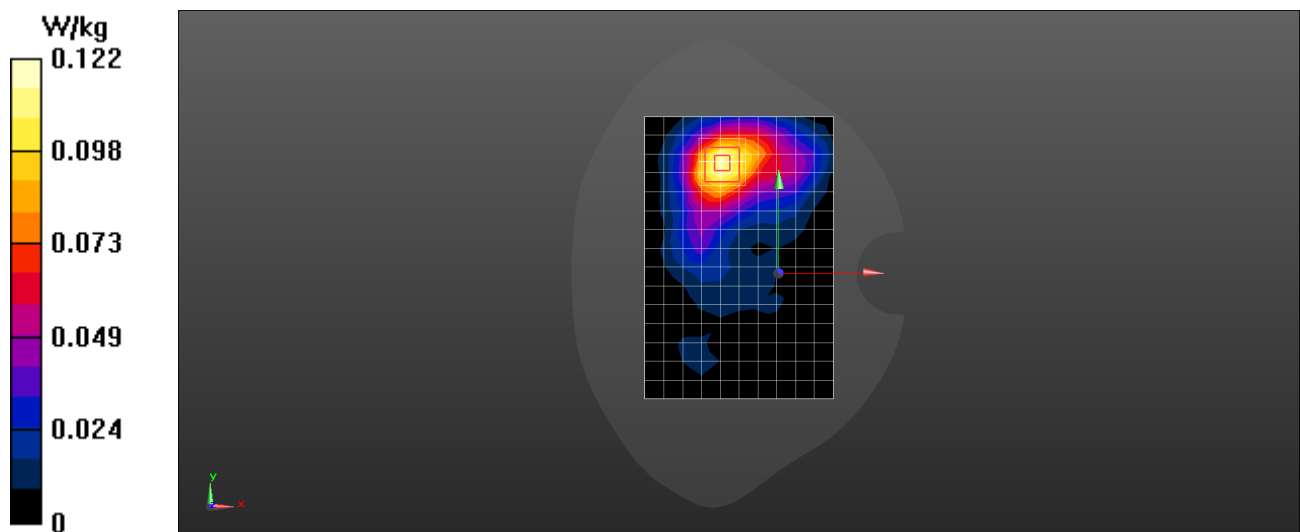
Reference Value = 2.846 V/m; Power Drift = 0.07 dB

Peak SAR (extrapolated) = 0.149 W/kg

SAR(1 g) = 0.080 W/kg; SAR(10 g) = 0.044 W/kg

[Info: Interpolated medium parameters used for SAR evaluation.](#)

Maximum value of SAR (measured) = 0.122 W/kg



Test Laboratory: HUAWEI SAR/HAC Lab

VOG-L04 WiFi 2.4G 802.11g 3CH Back Side 15mm-Core1

DUT: VOG-L04; Type: Smart Phone; Serial: SAR3

Communication System: UID 0, WiFi(802.11a/b/g/n) (0); Frequency: 2422 MHz; Duty Cycle: 1:1.01
Medium parameters used: $f = 2422$ MHz; $\sigma = 2.007$ S/m; $\epsilon_r = 53.838$; $\rho = 1000$ kg/m³

Phantom section: Flat Section

DASY Configuration:

- Probe: EX3DV4 - SN3744; ConvF(7.39, 7.39, 7.39) @ 2422 MHz; Calibrated: 2018-7-25
- Sensor-Surface: 1.4mm (Mechanical Surface Detection), $z = 1.0, 31.0$
- Electronics: DAE4 Sn852; Calibrated: 2018-4-23
- Phantom: SAM5; Type: SAM; Serial: 1892
- DASY52 52.10.1(1476); SEMCAD X 14.6.11(7439)

Configuration/Body/Area Scan (11x16x1): Measurement grid: $dx=12$ mm, $dy=12$ mm
Maximum value of SAR (measured) = 0.0764 W/kg

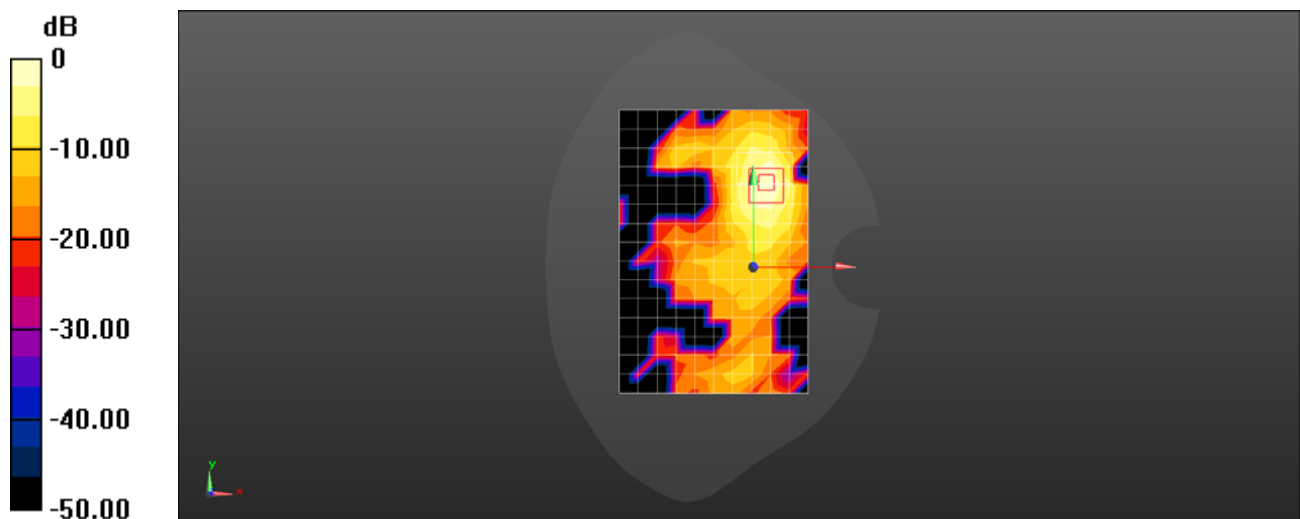
Configuration/Body/Zoom Scan (8x8x7)/Cube 0: Measurement grid: $dx=5$ mm, $dy=5$ mm, $dz=5$ mm

Reference Value = 1.383 V/m; Power Drift = -0.07 dB

Peak SAR (extrapolated) = 0.102 W/kg

SAR(1 g) = 0.0475 W/kg; SAR(10 g) = 0.019 W/kg

Maximum value of SAR (measured) = 0.0799 W/kg



0 dB = 0.0799 W/kg = -10.97 dBW/kg

Test Laboratory: HUAWEI SAR/HAC Lab

VOG-L04 WiFi 2.4G 802.11b 6CH Top Side 10mm with Battery2-Core0

DUT: VOG-L04; Type: Smart Phone; Serial: SAR3

Communication System: UID 0, WiFi(802.11a/b/g/n) (0); Frequency: 2437 MHz; Duty Cycle: 1:1.01
Medium parameters used (interpolated): $f = 2437$ MHz; $\sigma = 2.022$ S/m; $\epsilon_r = 53.806$; $\rho = 1000$ kg/m³
Phantom section: Flat Section

DASY Configuration:

- Probe: EX3DV4 - SN3744; ConvF(7.39, 7.39, 7.39) @ 2437 MHz; Calibrated: 2018-7-25
- Sensor-Surface: 1.4mm (Mechanical Surface Detection), $z = 1.0, 31.0$
- Electronics: DAE4 Sn852; Calibrated: 2018-4-23
- Phantom: SAM5; Type: SAM; Serial: 1892
- DASY52 52.10.1(1476); SEMCAD X 14.6.11(7439)

Configuration/Body/Area Scan (7x11x1): Measurement grid: $dx=12$ mm, $dy=12$ mm

[Info: Interpolated medium parameters used for SAR evaluation.](#)

Maximum value of SAR (measured) = 0.421 W/kg

Configuration/Body/Zoom Scan (7x7x7)/Cube 0: Measurement grid: $dx=5$ mm, $dy=5$ mm, $dz=5$ mm

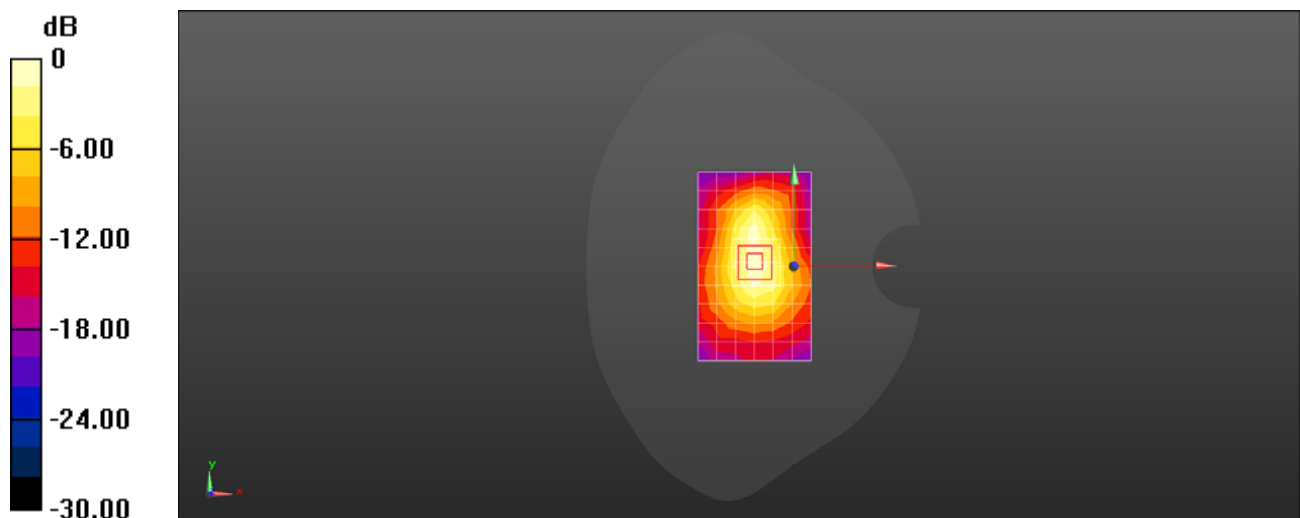
Reference Value = 15.08 V/m; Power Drift = -0.17 dB

Peak SAR (extrapolated) = 0.528 W/kg

SAR(1 g) = 0.258 W/kg; SAR(10 g) = 0.131 W/kg

[Info: Interpolated medium parameters used for SAR evaluation.](#)

Maximum value of SAR (measured) = 0.419 W/kg



0 dB = 0.419 W/kg = -3.78 dBW/kg

Test Laboratory: HUAWEI SAR/HAC Lab

VOG-L04 WiFi 2.4G 802.11b 1CH Back Side 10mm with Battery2-Core1

DUT: VOG-L04; Type: Smart Phone; Serial: SAR3

Communication System: UID 0, WiFi(802.11a/b/g/n) (0); Frequency: 2412 MHz; Duty Cycle: 1:1.01
Medium parameters used: $f = 2412$ MHz; $\sigma = 1.997$ S/m; $\epsilon_r = 53.867$; $\rho = 1000$ kg/m³

Phantom section: Flat Section

DASY Configuration:

- Probe: EX3DV4 - SN3744; ConvF(7.39, 7.39, 7.39) @ 2412 MHz; Calibrated: 2018-7-25
- Sensor-Surface: 1.4mm (Mechanical Surface Detection), $z = 1.0, 31.0$
- Electronics: DAE4 Sn852; Calibrated: 2018-4-23
- Phantom: SAM5; Type: SAM; Serial: 1892
- DASY52 52.10.1(1476); SEMCAD X 14.6.11(7439)

Configuration/Body/Area Scan (11x16x1): Measurement grid: $dx=12$ mm, $dy=12$ mm
Maximum value of SAR (measured) = 0.142 W/kg

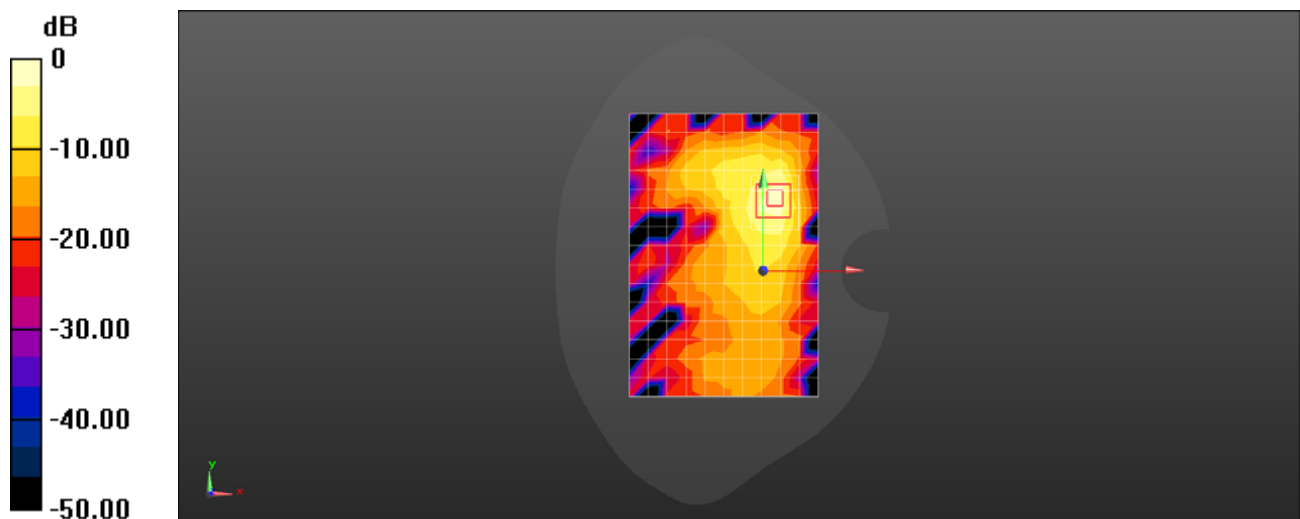
Configuration/Body/Zoom Scan (7x8x7)/Cube 0: Measurement grid: $dx=5$ mm, $dy=5$ mm, $dz=5$ mm

Reference Value = 7.215 V/m; Power Drift = -0.06 dB

Peak SAR (extrapolated) = 0.266 W/kg

SAR(1 g) = 0.112 W/kg; SAR(10 g) = 0.044 W/kg

Maximum value of SAR (measured) = 0.206 W/kg



0 dB = 0.206 W/kg = -6.86 dBW/kg

Test Laboratory: HUAWEI SAR/HAC Lab

VOG-L04 WiFi 2.4G 802.11g 6CH Top Side 0mm-Core0

DUT: VOG-L04; Type: Smart Phone; Serial: SAR3

Communication System: UID 0, WiFi(802.11a/b/g/n) (0); Frequency: 2437 MHz; Duty Cycle: 1:1.01
Medium parameters used (interpolated): $f = 2437$ MHz; $\sigma = 2.022$ S/m; $\epsilon_r = 53.806$; $\rho = 1000$ kg/m³
Phantom section: Flat Section

DASY Configuration:

- Probe: EX3DV4 - SN3744; ConvF(7.39, 7.39, 7.39) @ 2437 MHz; Calibrated: 2018-7-25
- Sensor-Surface: 1.4mm (Mechanical Surface Detection), $z = 1.0, 31.0$
- Electronics: DAE4 Sn852; Calibrated: 2018-4-23
- Phantom: SAM5; Type: SAM; Serial: 1892
- DASY52 52.10.1(1476); SEMCAD X 14.6.11(7439)

Configuration/Body/Area Scan (6x11x1): Measurement grid: $dx=12$ mm, $dy=12$ mm

[Info: Interpolated medium parameters used for SAR evaluation.](#)

Maximum value of SAR (measured) = 2.68 W/kg

Configuration/Body/Zoom Scan (7x7x7)/Cube 0: Measurement grid: $dx=5$ mm, $dy=5$ mm, $dz=5$ mm

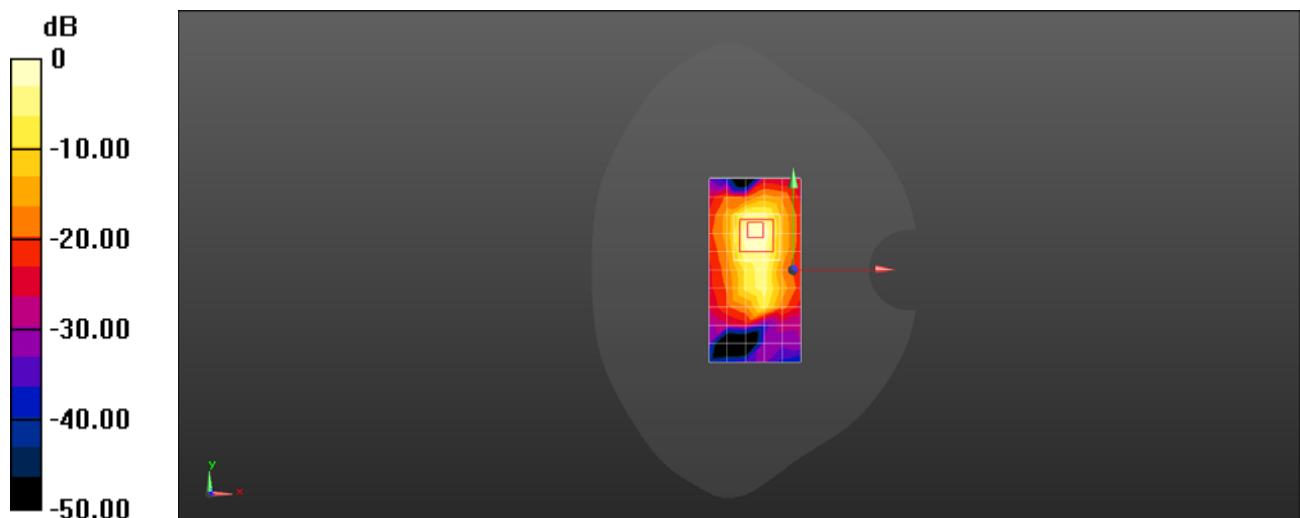
Reference Value = 8.364 V/m; Power Drift = 0.02 dB

Peak SAR (extrapolated) = 8.70 W/kg

SAR(1 g) = 2.56 W/kg; SAR(10 g) = 0.866 W/kg

[Info: Interpolated medium parameters used for SAR evaluation.](#)

Maximum value of SAR (measured) = 5.83 W/kg



0 dB = 2.68 W/kg = 4.29 dBW/kg

Test Laboratory: HUAWEI SAR/HAC Lab

VOG-L04 WiFi 2.4G 802.11g 9CH Back Side 0mm-Core1

DUT: VOG-L04; Type: Smart Phone; Serial: SAR3

Communication System: UID 0, WiFi(802.11a/b/g/n) (0); Frequency: 2452 MHz; Duty Cycle: 1:1.01
Medium parameters used: $f = 2452$ MHz; $\sigma = 2.039$ S/m; $\epsilon_r = 53.761$; $\rho = 1000$ kg/m³

Phantom section: Flat Section

DASY Configuration:

- Probe: EX3DV4 - SN3744; ConvF(7.39, 7.39, 7.39) @ 2452 MHz; Calibrated: 2018-7-25
- Sensor-Surface: 1.4mm (Mechanical Surface Detection), $z = 1.0, 31.0$
- Electronics: DAE4 Sn852; Calibrated: 2018-4-23
- Phantom: SAM5; Type: SAM; Serial: 1892
- DASY52 52.10.1(1476); SEMCAD X 14.6.11(7439)

Configuration/Body/Area Scan (11x16x1): Measurement grid: $dx=12$ mm, $dy=12$ mm
Maximum value of SAR (measured) = 1.30 W/kg

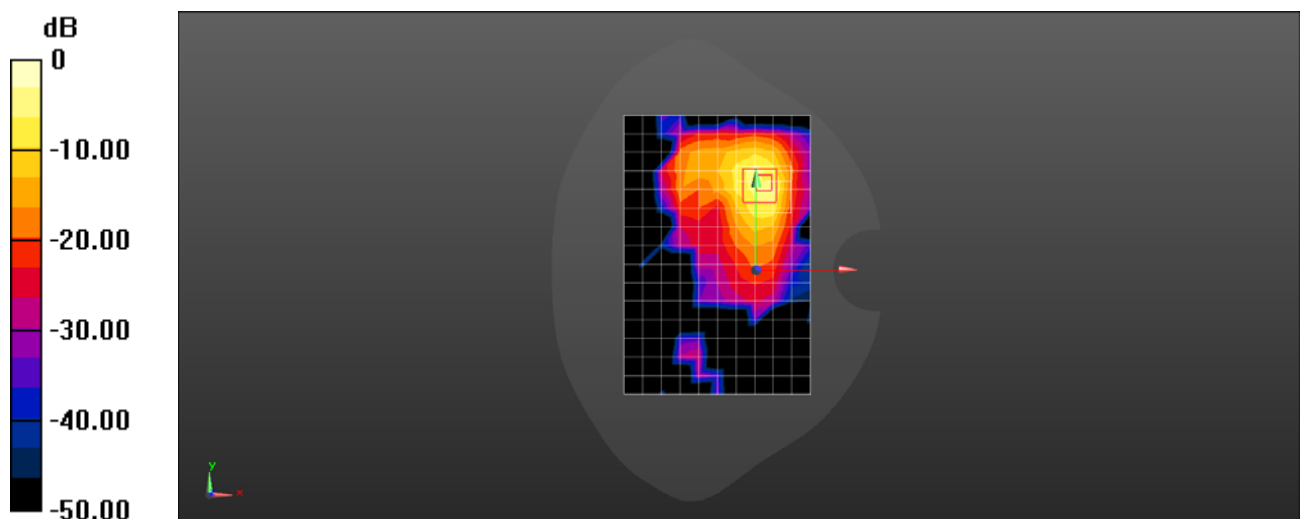
Configuration/Body/Zoom Scan (8x7x7)/Cube 0: Measurement grid: $dx=5$ mm, $dy=5$ mm, $dz=5$ mm

Reference Value = 1.470 V/m; Power Drift = 0.10 dB

Peak SAR (extrapolated) = 5.27 W/kg

SAR(1 g) = 1.49 W/kg; SAR(10 g) = 0.496 W/kg

Maximum value of SAR (measured) = 3.23 W/kg



0 dB = 3.23 W/kg = 5.09 dBW/kg

Test Laboratory: HUAWEI SAR/HAC Lab

VOG-L04 WiFi 5G 802.11n 40M 118CH Left Tilt-Core0

DUT: VOG-L04; Type: Smart Phone; Serial: SAR5

Communication System: UID 0, WiFi(802.11a/b/g/n) (0); Frequency: 5590 MHz; Duty Cycle: 1:1.04
Medium parameters used: $f = 5590$ MHz; $\sigma = 4.951$ S/m; $\epsilon_r = 34.173$; $\rho = 1000$ kg/m³

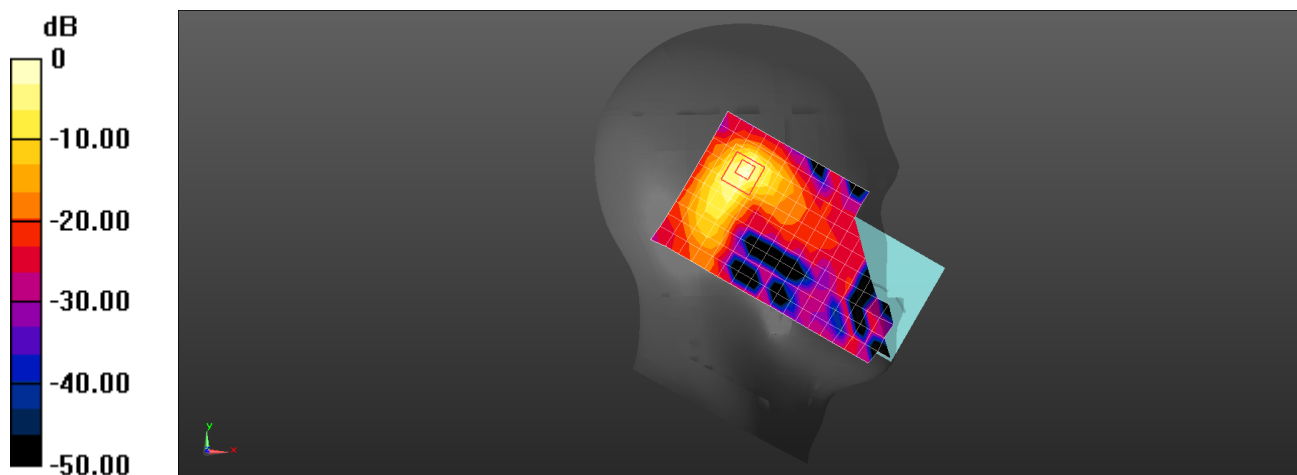
Phantom section: Left Section

DASY Configuration:

- Probe: EX3DV4 - SN7489; ConvF(4.93, 4.93, 4.93) @ 5590 MHz; Calibrated: 2018-1-9
- Sensor-Surface: 1.4mm (Mechanical Surface Detection), $z = 1.0, 25.0$
- Electronics: DAE4 Sn1554; Calibrated: 2018-6-5
- Phantom: SAM8; Type: SAM; Serial: 1940
- DASY52 52.10.1(1476); SEMCAD X 14.6.11(7439)

Configuration/Head/Area Scan (11x20x1): Measurement grid: $dx=10$ mm, $dy=10$ mm
Maximum value of SAR (measured) = 0.957 W/kg

Configuration/Head/Zoom Scan (8x8x7)/Cube 0: Measurement grid: $dx=4$ mm, $dy=4$ mm, $dz=1.4$ mm
Reference Value = 14.93 V/m; Power Drift = -0.12 dB
Peak SAR (extrapolated) = 2.01 W/kg
SAR(1 g) = 0.391 W/kg; SAR(10 g) = 0.106 W/kg
Maximum value of SAR (measured) = 1.05 W/kg



0 dB = 1.05 W/kg = 0.21 dBW/kg

Test Laboratory: HUAWEI SAR/HAC Lab

VOG-L04 WiFi 5G 802.11n 40M 110CH Right Tilt-Core1

DUT: VOG-L04; Type: Smart Phone; Serial: SAR6

Communication System: UID 0, WiFi(802.11a/b/g/n) (0); Frequency: 5550 MHz; Duty Cycle: 1:1.04

Medium parameters used: $f = 5550$ MHz; $\sigma = 4.862$ S/m; $\epsilon_r = 35.017$; $\rho = 1000$ kg/m³

Phantom section: Right Section

DASY Configuration:

- Probe: EX3DV4 - SN3736; ConvF(4.38, 4.38, 4.38) @ 5550 MHz; Calibrated: 2018-4-27
- Sensor-Surface: 1.4mm (Mechanical Surface Detection), $z = 1.0, 25.0$
- Electronics: DAE4 Sn851; Calibrated: 2018-7-18
- Phantom: SAM9; Type: SAM; Serial: 1958
- DASY52 52.10.1(1476); SEMCAD X 14.6.11(7439)

Configuration/Head/Area Scan (12x20x1): Measurement grid: $dx=10$ mm, $dy=10$ mm

Maximum value of SAR (measured) = 0.0569 W/kg

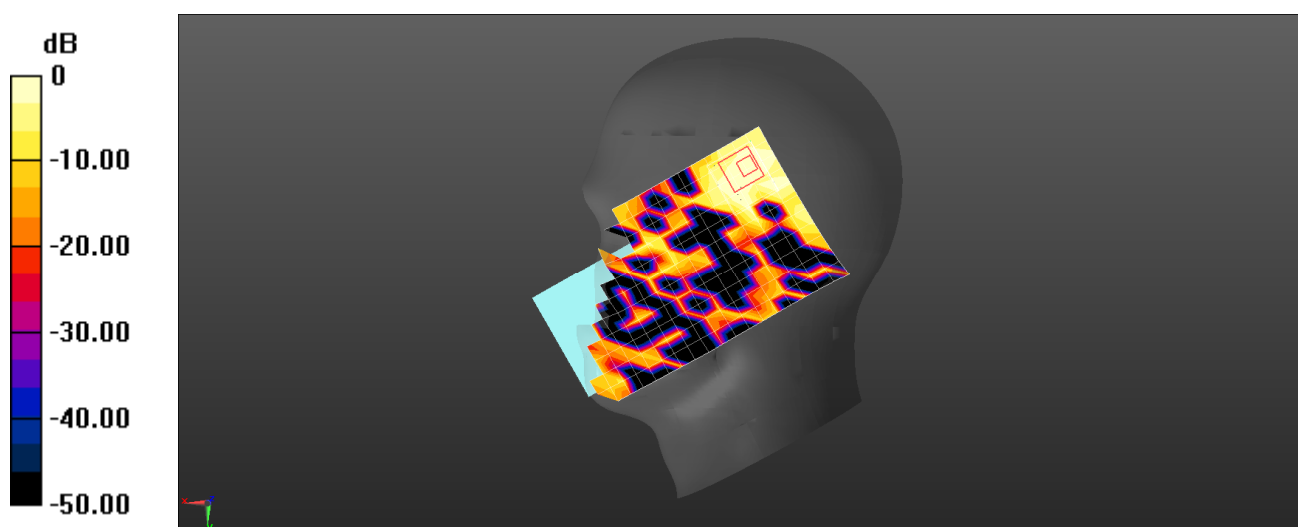
Configuration/Head/Zoom Scan (9x9x7)/Cube 0: Measurement grid: $dx=4$ mm, $dy=4$ mm, $dz=1.4$ mm

Reference Value = 0 V/m; Power Drift = 0.00 dB

Peak SAR (extrapolated) = 0.333 W/kg

SAR(1 g) = 0.018 W/kg; SAR(10 g) = 0.00346 W/kg

Maximum value of SAR (measured) = 0.0668 W/kg



0 dB = 0.0569 W/kg = -12.45 dBW/kg

Test Laboratory: HUAWEI SAR/HAC Lab

VOG-L04 WiFi 5G 802.11a 116CH Back Side 15mm with Battery2-Core0

DUT: VOG-L04; Type: Smart Phone; Serial: SAR1

Communication System: UID 0, WiFi(802.11a/b/g/n/ac) (0); Frequency: 5580 MHz; Duty Cycle: 1:1.01
Medium parameters used: $f = 5580$ MHz; $\sigma = 5.563$ S/m; $\epsilon_r = 46.42$; $\rho = 1000$ kg/m³

Phantom section: Flat Section

DASY Configuration:

- Probe: EX3DV4 - SN7505; ConvF(4.18, 4.18, 4.18) @ 5580 MHz; Calibrated: 2018-6-12
- Sensor-Surface: 1.4mm (Mechanical Surface Detection), $z = 1.0, 25.0$
- Electronics: DAE4 Sn1492; Calibrated: 2018-11-14
- Phantom: SAM2; Type: SAM; Serial: 1474
- DASY52 52.10.1(1476); SEMCAD X 14.6.11(7439)

Configuration/Body/Area Scan (11x19x1): Measurement grid: $dx=10$ mm, $dy=10$ mm
Maximum value of SAR (measured) = 0.0899 W/kg

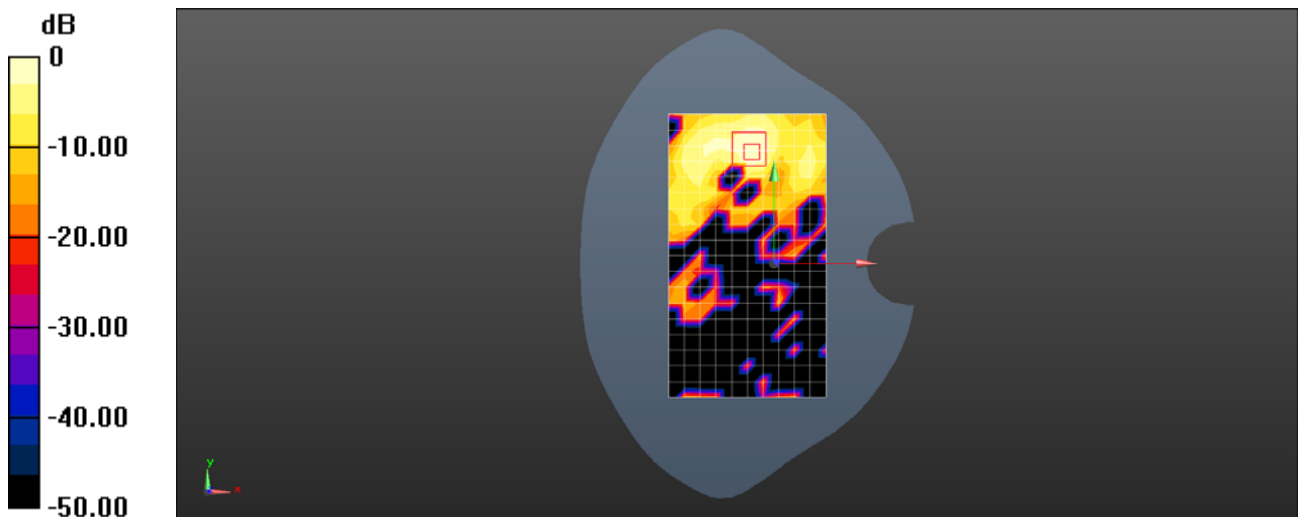
Configuration/Body/Zoom Scan (9x9x7)/Cube 0: Measurement grid: $dx=4$ mm, $dy=4$ mm, $dz=1.4$ mm

Reference Value = 0 V/m; Power Drift = 0.10 dB

Peak SAR (extrapolated) = 0.131 W/kg

SAR(1 g) = 0.040 W/kg; SAR(10 g) = 0.014 W/kg

Maximum value of SAR (measured) = 0.0902 W/kg



0 dB = 0.0902 W/kg = -10.45 dBW/kg

Test Laboratory: HUAWEI SAR/HAC Lab

VOG-L04 WiFi 5G 802.11a 60CH Back Side 15mm-Core1

DUT: VOG-L04; Type: Smart Phone; Serial: SAR1

Communication System: UID 0, WiFi(802.11a/b/g/n/ac) (0); Frequency: 5300 MHz; Duty Cycle: 1:1.01
Medium parameters used (interpolated): $f = 5300$ MHz; $\sigma = 5.187$ S/m; $\epsilon_r = 46.913$; $\rho = 1000$ kg/m³
Phantom section: Flat Section

DASY Configuration:

- Probe: EX3DV4 - SN7505; ConvF(4.84, 4.84, 4.84) @ 5300 MHz; Calibrated: 2018-6-12
- Sensor-Surface: 1.4mm (Mechanical Surface Detection), $z = 1.0, 25.0$
- Electronics: DAE4 Sn1492; Calibrated: 2018-11-14
- Phantom: SAM2; Type: SAM; Serial: 1474
- DASY52 52.10.1(1476); SEMCAD X 14.6.11(7439)

Configuration/Body/Area Scan (12x21x1): Measurement grid: $dx=10$ mm, $dy=10$ mm

[Info: Interpolated medium parameters used for SAR evaluation.](#)

Maximum value of SAR (measured) = 0.0701 W/kg

Configuration/Body/Zoom Scan (9x9x7)/Cube 0: Measurement grid: $dx=4$ mm, $dy=4$ mm, $dz=1.4$ mm

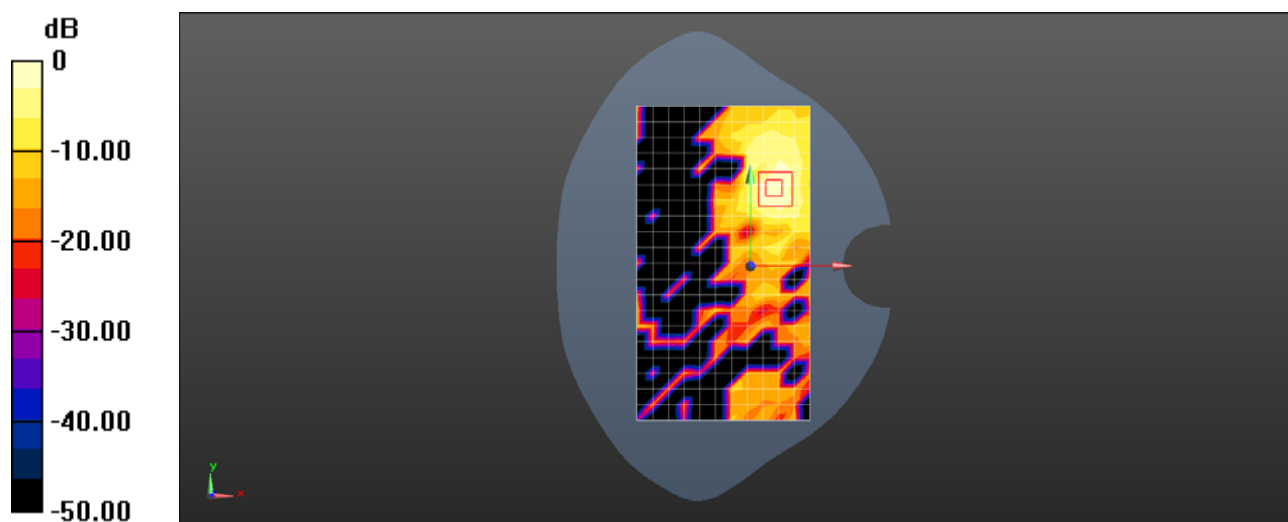
Reference Value = 0 V/m; Power Drift = 0.00 dB

Peak SAR (extrapolated) = 0.111 W/kg

SAR(1 g) = 0.034 W/kg; SAR(10 g) = 0.011 W/kg

[Info: Interpolated medium parameters used for SAR evaluation.](#)

Maximum value of SAR (measured) = 0.0728 W/kg



0 dB = 0.0728 W/kg = -11.38 dBW/kg

Test Laboratory: HUAWEI SAR/HAC Lab

VOG-L04 WiFi 5G 802.11a 153CH Top Side 10mm with Battery2-Core0

DUT: VOG-L04; Type: Smart Phone; Serial: SAR3

Communication System: UID 0, WiFi(802.11a/b/g/n) (0); Frequency: 5765 MHz;Duty Cycle: 1:1.01
Medium parameters used: $f = 5765$ MHz; $\sigma = 5.973$ S/m; $\epsilon_r = 46.137$; $\rho = 1000$ kg/m³

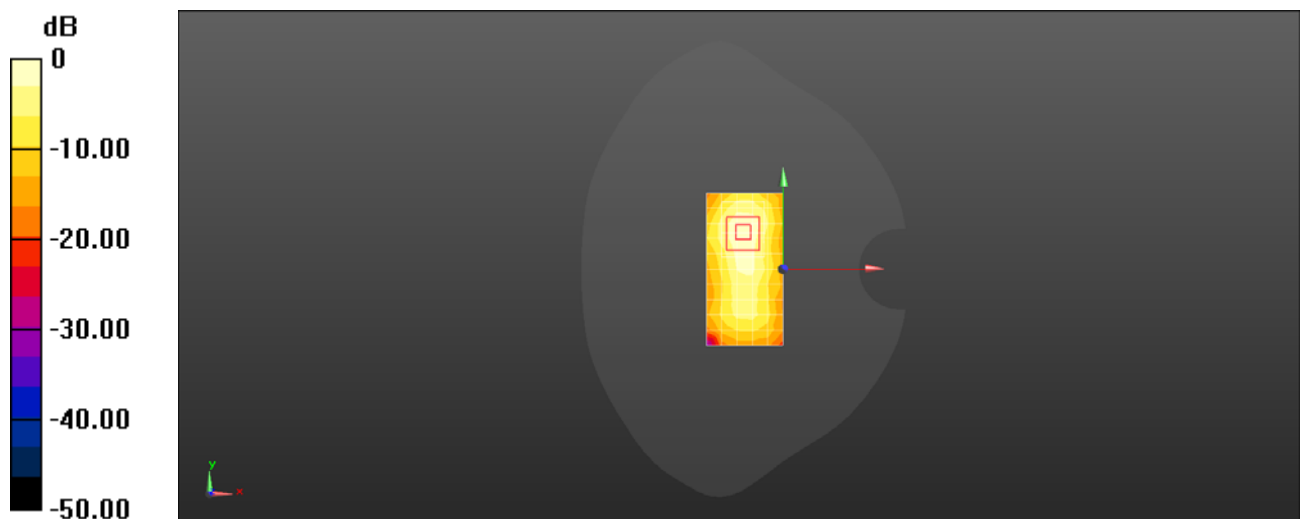
Phantom section: Flat Section

DASY Configuration:

- Probe: EX3DV4 - SN3736; ConvF(3.78, 3.78, 3.78) @ 5765 MHz; Calibrated: 2018-4-27
- Sensor-Surface: 1.4mm (Mechanical Surface Detection), $z = 1.0, 25.0$
- Electronics: DAE4 Sn852; Calibrated: 2018-4-23
- Phantom: SAM5; Type: SAM; Serial: 1892
- DASY52 52.10.1(1476); SEMCAD X 14.6.11(7439)

Configuration/Body/Area Scan (6x11x1): Measurement grid: $dx=10$ mm, $dy=10$ mm
Maximum value of SAR (measured) = 0.326 W/kg

Configuration/Body/Zoom Scan (8x10x7)/Cube 0: Measurement grid: $dx=4$ mm, $dy=4$ mm, $dz=1.4$ mm
Reference Value = 9.415 V/m; Power Drift = -0.09 dB
Peak SAR (extrapolated) = 0.656 W/kg
SAR(1 g) = 0.150 W/kg; SAR(10 g) = 0.051 W/kg
Maximum value of SAR (measured) = 0.388 W/kg



0 dB = 0.388 W/kg = -4.11 dBW/kg

Test Laboratory: HUAWEI SAR/HAC Lab

VOG-L04 WiFi 5G 802.11a 48CH Back Side 10mm-Core1

DUT: VOG-L04; Type: Smart Phone; Serial: SAR3

Communication System: UID 0, WiFi(802.11a/b/g/n) (0); Frequency: 5240 MHz; Duty Cycle: 1:1.01
Medium parameters used: $f = 5240$ MHz; $\sigma = 5.276$ S/m; $\epsilon_r = 47.121$; $\rho = 1000$ kg/m³

Phantom section: Flat Section

DASY Configuration:

- Probe: EX3DV4 - SN3736; ConvF(4.01, 4.01, 4.01) @ 5240 MHz; Calibrated: 2018-4-27
- Sensor-Surface: 1.4mm (Mechanical Surface Detection), $z = 1.0, 25.0$
- Electronics: DAE4 Sn852; Calibrated: 2018-4-23
- Phantom: SAM5; Type: SAM; Serial: 1892
- DASY52 52.10.1(1476); SEMCAD X 14.6.11(7439)

Configuration/Body/Area Scan (11x19x1): Measurement grid: $dx=10$ mm, $dy=10$ mm
Maximum value of SAR (measured) = 0.200 W/kg

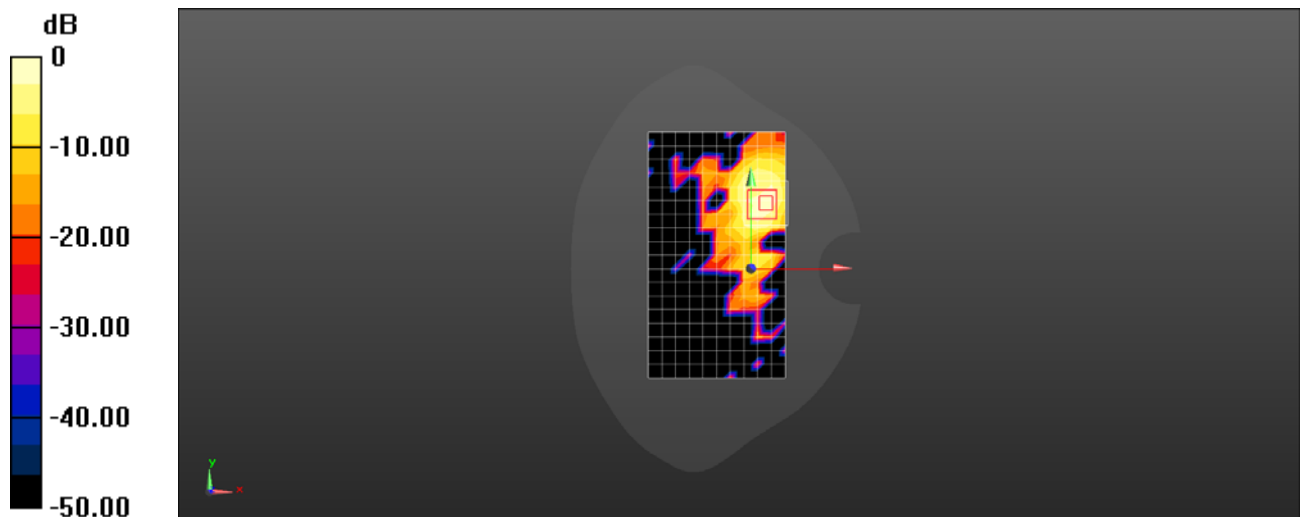
Configuration/Body/Zoom Scan (9x9x7)/Cube 0: Measurement grid: $dx=4$ mm, $dy=4$ mm, $dz=1.4$ mm

Reference Value = 0 V/m; Power Drift = 0.00 dB

Peak SAR (extrapolated) = 0.392 W/kg

SAR(1 g) = 0.092 W/kg; SAR(10 g) = 0.026 W/kg

Maximum value of SAR (measured) = 0.265 W/kg



0 dB = 0.200 W/kg = -6.98 dBW/kg

Test Laboratory: HUAWEI SAR/HAC Lab

VOG-L04 WiFi 5G 802.11a 116CH Top Side 0mm with Battery2-Core0

DUT: VOG-L04; Type: Smart Phone; Serial: SAR4

Communication System: UID 0, WiFi(802.11a/b/g/n) (0); Frequency: 5580 MHz; Duty Cycle: 1:1.01
Medium parameters used: $f = 5580$ MHz; $\sigma = 5.801$ S/m; $\epsilon_r = 47.068$; $\rho = 1000$ kg/m³
Phantom section: Center Section

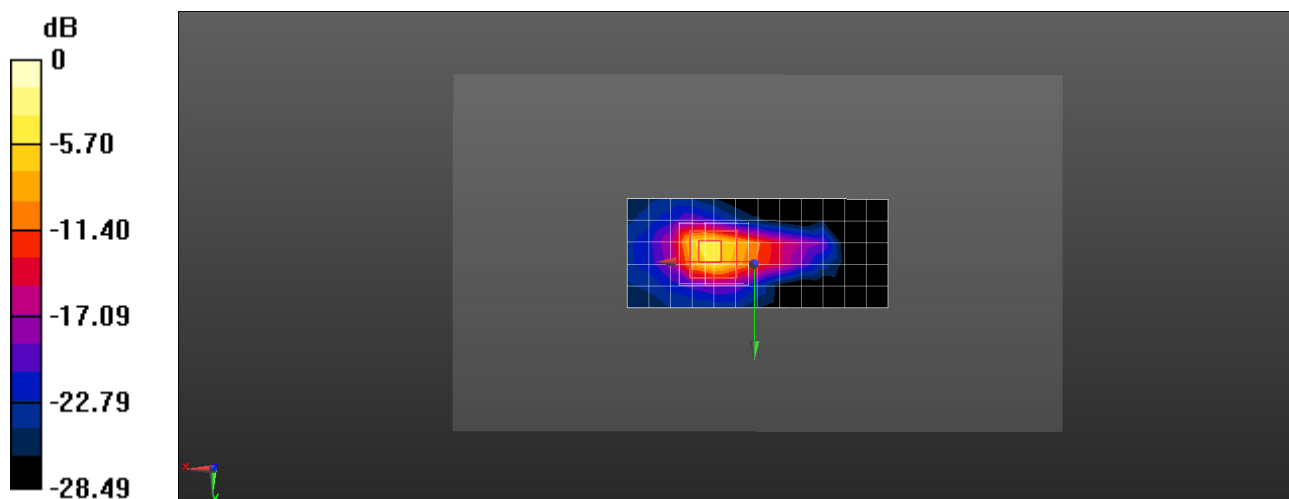
DASY Configuration:

- Probe: EX3DV4 - SN7381; ConvF(4.26, 4.26, 4.26) @ 5580 MHz; Calibrated: 2018-9-28
- Sensor-Surface: 1.4mm (Mechanical Surface Detection), $z = 1.0, 25.0$
- Electronics: DAE4 Sn1236; Calibrated: 2018-7-18
- Phantom: Triple Flat Phantom 5.1C; Type: MFP V5.1 C; Serial: 1176/2
- DASY52 52.10.1(1476); SEMCAD X 14.6.11(7439)

Configuration/Body/Area Scan (6x13x1): Measurement grid: $dx=10$ mm, $dy=10$ mm
Maximum value of SAR (measured) = 5.28 W/kg

Configuration/Body/Zoom Scan (8x9x7)/Cube 0: Measurement grid: $dx=4$ mm, $dy=4$ mm, $dz=1.4$ mm
Reference Value = 25.45 V/m; Power Drift = -0.19 dB
Peak SAR (extrapolated) = 33.7 W/kg
SAR(1 g) = 5.28 W/kg; SAR(10 g) = 1.24 W/kg

Maximum value of SAR (measured) = 14.8 W/kg



0 dB = 14.8 W/kg = 11.70 dBW/kg

Test Laboratory: HUAWEI SAR/HAC Lab

VOG-L04 WiFi 5G 802.11a 52CH Back Side 0mm-Core1

DUT: VOG-L04; Type: Smart Phone; Serial: SAR4

Communication System: UID 0, WiFi(802.11a/b/g/n) (0); Frequency: 5260 MHz; Duty Cycle: 1:1.01
Medium parameters used: $f = 5260$ MHz; $\sigma = 5.351$ S/m; $\epsilon_r = 47.684$; $\rho = 1000$ kg/m³

Phantom section: Center Section

DASY Configuration:

- Probe: EX3DV4 - SN7381; ConvF(4.75, 4.75, 4.75) @ 5260 MHz; Calibrated: 2018-9-28
- Sensor-Surface: 1.4mm (Mechanical Surface Detection), $z = 1.0, 25.0$
- Electronics: DAE4 Sn1236; Calibrated: 2018-7-18
- Phantom: Triple Flat Phantom 5.1C; Type: MFP V5.1 C; Serial: 1176/2
- DASY52 52.10.1(1476); SEMCAD X 14.6.11(7439)

Configuration/Body/Area Scan (12x20x1): Measurement grid: $dx=10$ mm, $dy=10$ mm
Maximum value of SAR (measured) = 4.86 W/kg

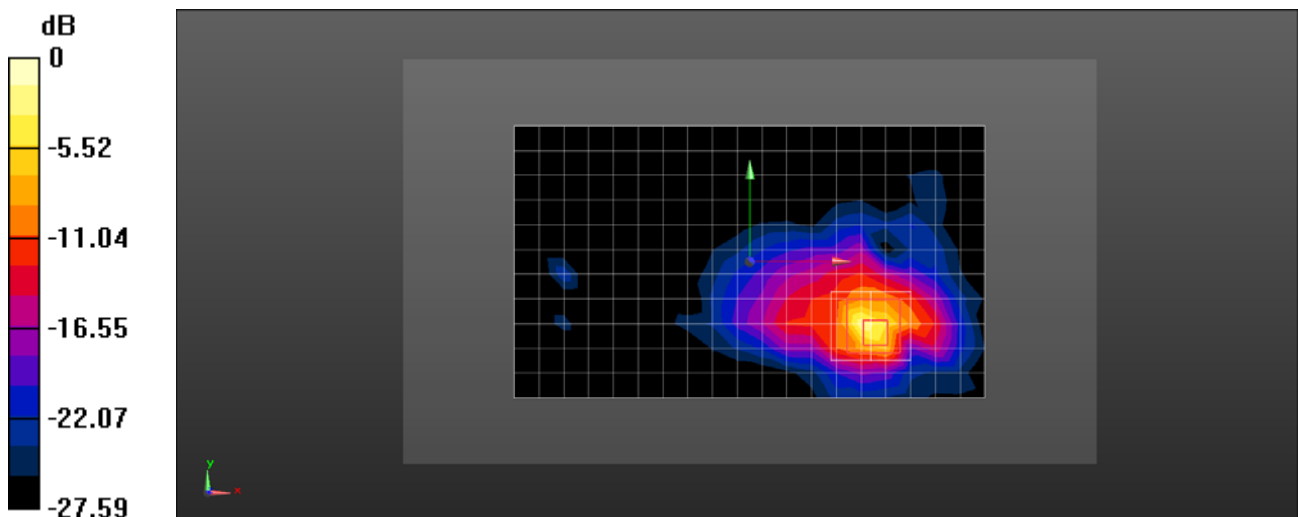
Configuration/Body/Zoom Scan (8x9x7)/Cube 0: Measurement grid: $dx=4$ mm, $dy=4$ mm, $dz=1.4$ mm

Reference Value = 3.303 V/m; Power Drift = 0.11 dB

Peak SAR (extrapolated) = 13.0 W/kg

SAR(1 g) = 2.3 W/kg; SAR(10 g) = 0.594 W/kg

Maximum value of SAR (measured) = 7.80 W/kg



0 dB = 7.80 W/kg = 8.92 dBW/kg

Test Laboratory: HUAWEI SAR/HAC Lab

VOG-L04 BT 39CH Left Tilt

DUT: VOG-L04; Type: Smart Phone; Serial: SAR6

Communication System: UID 0, BT (0); Frequency: 2441 MHz; Duty Cycle: 1:1.30

Medium parameters used (interpolated): $f = 2441$ MHz; $\sigma = 1.801$ S/m; $\epsilon_r = 38.008$; $\rho = 1000$ kg/m³

Phantom section: Left Section

DASY Configuration:

- Probe: EX3DV4 - SN3736; ConvF(7.13, 7.13, 7.13) @ 2441 MHz; Calibrated: 2018-4-27
- Sensor-Surface: 1.4mm (Mechanical Surface Detection), $z = 1.0, 31.0$
- Electronics: DAE4 Sn851; Calibrated: 2018-7-18
- Phantom: SAM9; Type: SAM; Serial: 1958
- DASY52 52.10.1(1476); SEMCAD X 14.6.11(7439)

Configuration/Head/Area Scan (10x16x1): Measurement grid: $dx=12$ mm, $dy=12$ mm

[Info: Interpolated medium parameters used for SAR evaluation.](#)

Maximum value of SAR (measured) = 0.231 W/kg

Configuration/Head/Zoom Scan (7x7x7)/Cube 0: Measurement grid: $dx=5$ mm, $dy=5$ mm, $dz=5$ mm

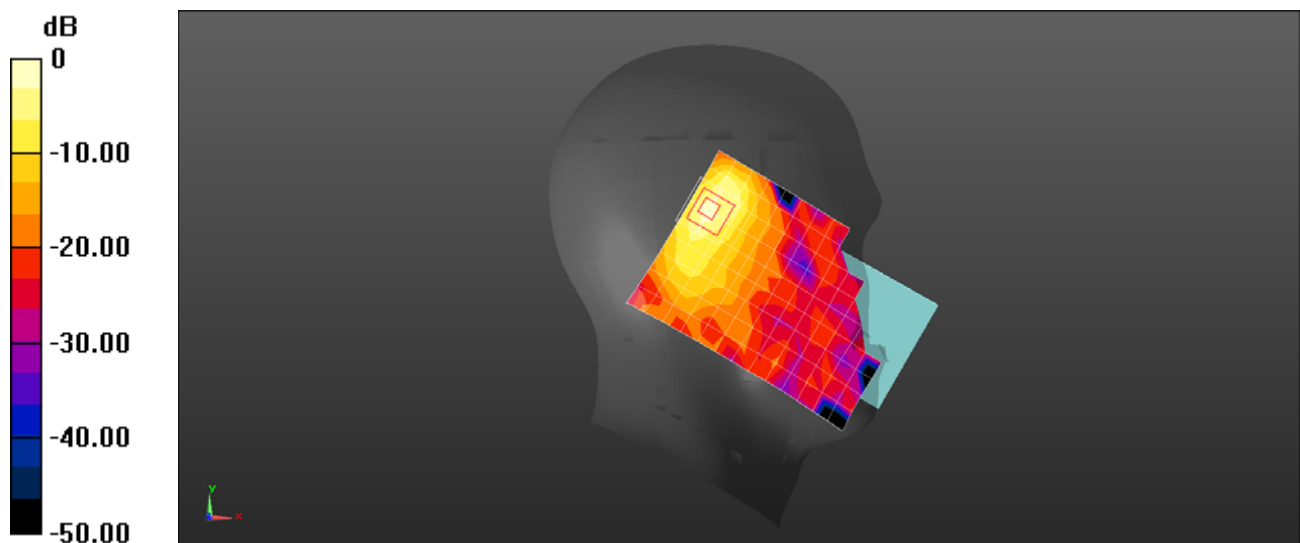
Reference Value = 4.332 V/m; Power Drift = -0.16 dB

Peak SAR (extrapolated) = 0.321 W/kg

SAR(1 g) = 0.128 W/kg; SAR(10 g) = 0.048 W/kg

[Info: Interpolated medium parameters used for SAR evaluation.](#)

Maximum value of SAR (measured) = 0.231 W/kg



0 dB = 0.231 W/kg = -6.36 dBW/kg

Test Laboratory: HUAWEI SAR/HAC Lab

VOG-L04 BT DH5 0CH Front Side 15mm

DUT: VOG-L04; Type: Smart Phone; Serial: SAR3

Communication System: UID 0, BT (0); Frequency: 2402 MHz; Duty Cycle: 1:1.30

Medium parameters used (interpolated): $f = 2402$ MHz; $\sigma = 1.988$ S/m; $\epsilon_r = 53.887$; $\rho = 1000$ kg/m³

Phantom section: Flat Section

DASY Configuration:

- Probe: EX3DV4 - SN3744; ConvF(7.39, 7.39, 7.39) @ 2402 MHz; Calibrated: 2018-7-25
- Sensor-Surface: 1.4mm (Mechanical Surface Detection), $z = 1.0, 31.0$
- Electronics: DAE4 Sn852; Calibrated: 2018-4-23
- Phantom: SAM5; Type: SAM; Serial: 1892
- DASY52 52.10.1(1476); SEMCAD X 14.6.11(7439)

Configuration/Body/Area Scan (10x16x1): Measurement grid: $dx=12$ mm, $dy=12$ mm

[Info: Interpolated medium parameters used for SAR evaluation.](#)

Maximum value of SAR (measured) = 0.0469 W/kg

Configuration/Body/Zoom Scan (7x7x7)/Cube 0: Measurement grid: $dx=5$ mm, $dy=5$ mm, $dz=5$ mm

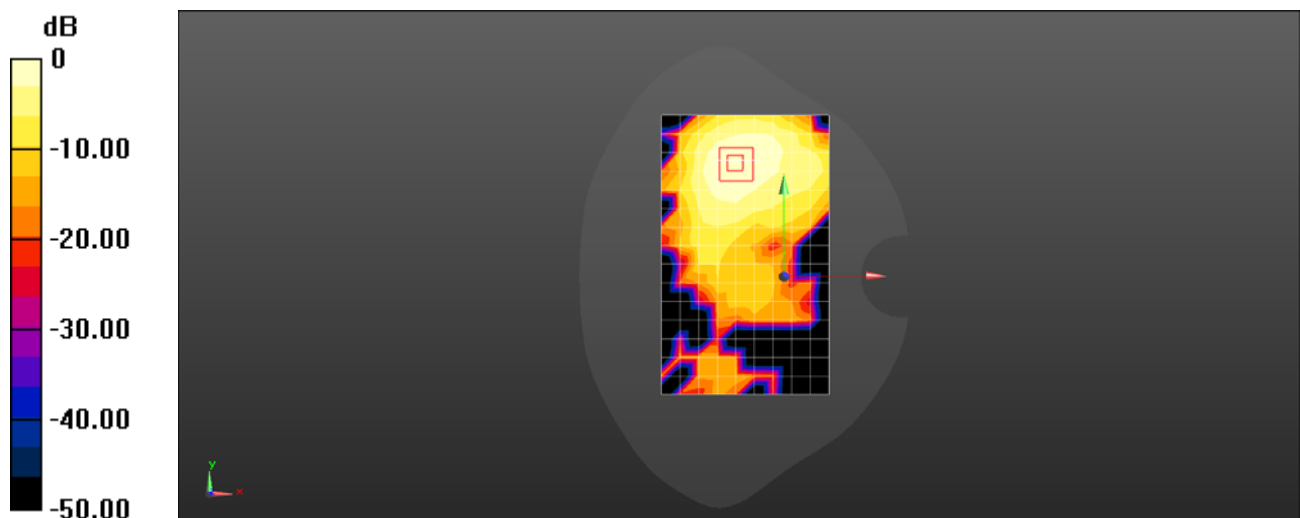
Reference Value = 1.283 V/m; Power Drift = -0.17 dB

Peak SAR (extrapolated) = 0.0580 W/kg

SAR(1 g) = 0.030 W/kg; SAR(10 g) = 0.014 W/kg

[Info: Interpolated medium parameters used for SAR evaluation.](#)

Maximum value of SAR (measured) = 0.0464 W/kg



0 dB = 0.0464 W/kg = -13.33 dBW/kg

Test Laboratory: HUAWEI SAR/HAC Lab

VOG-L04 BT DH5 0CH Top Side 10mm

DUT: VOG-L04; Type: Smart Phone; Serial: SAR3

Communication System: UID 0, BT (0); Frequency: 2402 MHz; Duty Cycle: 1:1.30

Medium parameters used (interpolated): $f = 2402$ MHz; $\sigma = 1.988$ S/m; $\epsilon_r = 53.887$; $\rho = 1000$ kg/m³

Phantom section: Flat Section

DASY Configuration:

- Probe: EX3DV4 - SN3744; ConvF(7.39, 7.39, 7.39) @ 2402 MHz; Calibrated: 2018-7-25
- Sensor-Surface: 1.4mm (Mechanical Surface Detection), $z = 1.0, 31.0$
- Electronics: DAE4 Sn852; Calibrated: 2018-4-23
- Phantom: SAM5; Type: SAM; Serial: 1892
- DASY52 52.10.1(1476); SEMCAD X 14.6.11(7439)

Configuration/Body/Area Scan (7x11x1): Measurement grid: $dx=12$ mm, $dy=12$ mm

[Info: Interpolated medium parameters used for SAR evaluation.](#)

Maximum value of SAR (measured) = 0.164 W/kg

Configuration/Body/Zoom Scan (7x7x7)/Cube 0: Measurement grid: $dx=5$ mm, $dy=5$ mm, $dz=5$ mm

Reference Value = 9.373 V/m; Power Drift = -0.11 dB

Peak SAR (extrapolated) = 0.217 W/kg

SAR(1 g) = 0.106 W/kg; SAR(10 g) = 0.052 W/kg

[Info: Interpolated medium parameters used for SAR evaluation.](#)

Maximum value of SAR (measured) = 0.173 W/kg

