



## Appendix B. SAR Measurement Plots

<b>Table of contents</b>
<b>GSM 850 MHz Head</b>
<b>GSM 850 MHz Body</b>
<b>GSM 1900 MHz Head</b>
<b>GSM 1900 MHz Body</b>
<b>WCDMA 850 MHz Head</b>
<b>WCDMA 850 MHz Body</b>
<b>WCDMA 1700 MHz Head</b>
<b>WCDMA 1700 MHz Body</b>
<b>WCDMA 1900 MHz Head</b>
<b>WCDMA 1900 MHz Body</b>
<b>WiFi(802.11b) 2450 MHz Head</b>
<b>WiFi(802.11b) 2450 MHz Body</b>

Test Laboratory: HUAWEI SAR Lab

**U8730 GSM850 190CH Left hand touch cheek**

**DUT: U8730; Type: HSPA/UMTS/GPRS/GSM/EDGE Mobile Phone with Bluetooth; Serial: SAR1**

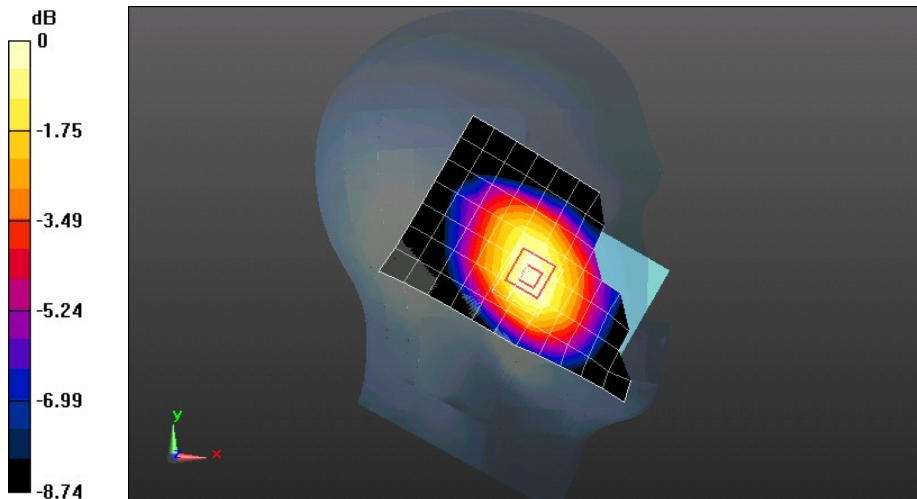
Communication System: HW-GSM/GPRS/EDGE 1TS; Frequency: 836.6 MHz  
 Medium parameters used:  $f = 837$  MHz;  $\sigma = 0.931$  mho/m;  $\epsilon_r = 41.744$ ;  $\rho = 1000$  kg/m<sup>3</sup>  
 Phantom section: Left Section

DASY5 Configuration:

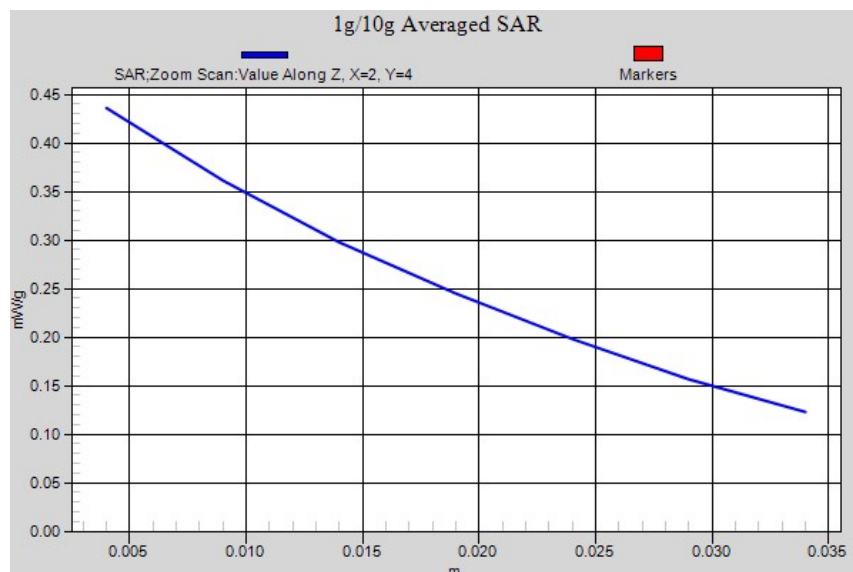
- Probe: ES3DV3 - SN3168; ConvF(6.07, 6.07, 6.07); Calibrated: 9/27/2011
- Sensor-Surface: 4mm (Mechanical Surface Detection),  $z = 2.0, 32.0$
- Electronics: DAE4 Sn914; Calibrated: 12/8/2011
- Phantom: SAM1; Type: SAM; Serial: TP-1475
- Measurement SW: DASY52, Version 52.8 (0); SEMCAD X Version 14.6.4 (4989)

**Configuration/Head/Area Scan (8x12x1):** Measurement grid:  $dx=15$ mm,  $dy=15$ mm  
 Maximum value of SAR (measured) = 0.426 mW/g

**Configuration/Head/Zoom Scan (7x7x7)/Cube 0:** Measurement grid:  $dx=5$ mm,  $dy=5$ mm,  $dz=5$ mm  
 Reference Value = 11.800 V/m; Power Drift = -0.10 dB  
 Peak SAR (extrapolated) = 0.5120  
**SAR(1 g) = 0.413 mW/g; SAR(10 g) = 0.319 mW/g**  
 Maximum value of SAR (measured) = 0.436 mW/g



0 dB = 0.440mW/g = -7.13 dB mW/g



Test Laboratory: HUAWEI SAR Lab

### U8730 GSM850 190CH Left hand tilt 15 degree

**DUT: U8730; Type: HSPA/UMTS/GPRS/GSM/EDGE Mobile Phone with Bluetooth; Serial: SAR1**

Communication System: HW-GSM/GPRS/EDGE 1TS; Frequency: 836.6 MHz

Medium parameters used:  $f = 837$  MHz;  $\sigma = 0.931$  mho/m;  $\epsilon_r = 41.744$ ;  $\rho = 1000$  kg/m<sup>3</sup>

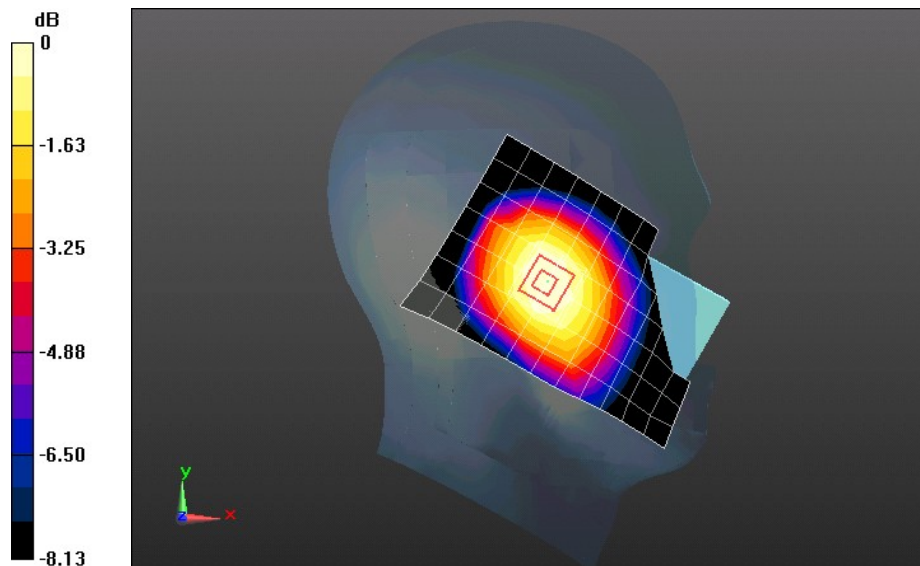
Phantom section: Left Section

DASY5 Configuration:

- Probe: ES3DV3 - SN3168; ConvF(6.07, 6.07, 6.07); Calibrated: 9/27/2011
- Sensor-Surface: 4mm (Mechanical Surface Detection),  $z = 2.0, 32.0$
- Electronics: DAE4 Sn914; Calibrated: 12/8/2011
- Phantom: SAM1; Type: SAM; Serial: TP-1475
- Measurement SW: DASY52, Version 52.8 (0); SEMCAD X Version 14.6.4 (4989)

**Configuration/Head/Area Scan (8x12x1):** Measurement grid:  $dx=15$ mm,  $dy=15$ mm  
Maximum value of SAR (measured) = 0.272 mW/g

**Configuration/Head/Zoom Scan (7x7x7)/Cube 0:** Measurement grid:  $dx=5$ mm,  $dy=5$ mm,  $dz=5$ mm  
Reference Value = 14.326 V/m; Power Drift = -0.11 dB  
Peak SAR (extrapolated) = 0.3090  
**SAR(1 g) = 0.259 mW/g; SAR(10 g) = 0.205 mW/g**  
Maximum value of SAR (measured) = 0.270 mW/g



0 dB = 0.270mW/g = -11.37 dB mW/g

Test Laboratory: HUAWEI SAR Lab

### U8730 GSM850 190CH Right hand touch cheek

**DUT: U8730; Type: HSPA/UMTS/GPRS/GSM/EDGE Mobile Phone with Bluetooth; Serial: SAR1**

Communication System: HW-GSM/GPRS/EDGE 1TS; Frequency: 836.6 MHz

Medium parameters used:  $f = 837$  MHz;  $\sigma = 0.931$  mho/m;  $\epsilon_r = 41.744$ ;  $\rho = 1000$  kg/m<sup>3</sup>

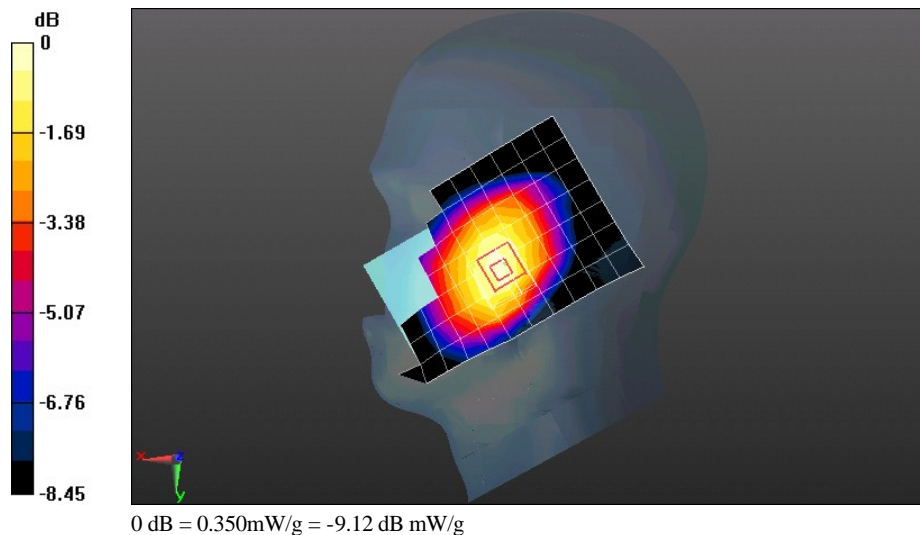
Phantom section: Right Section

DASY5 Configuration:

- Probe: ES3DV3 - SN3168; ConvF(6.07, 6.07, 6.07); Calibrated: 9/27/2011
- Sensor-Surface: 4mm (Mechanical Surface Detection),  $z = 2.0, 32.0$
- Electronics: DAE4 Sn914; Calibrated: 12/8/2011
- Phantom: SAM1; Type: SAM; Serial: TP-1475
- Measurement SW: DASY52, Version 52.8 (0); SEMCAD X Version 14.6.4 (4989)

**Configuration/Head/Area Scan (8x12x1):** Measurement grid:  $dx=15$ mm,  $dy=15$ mm  
Maximum value of SAR (measured) = 0.338 mW/g

**Configuration/Head/Zoom Scan (7x7x7)/Cube 0:** Measurement grid:  $dx=5$ mm,  $dy=5$ mm,  $dz=5$ mm  
Reference Value = 9.684 V/m; Power Drift = 0.09 dB  
Peak SAR (extrapolated) = 0.3900  
**SAR(1 g) = 0.327 mW/g; SAR(10 g) = 0.256 mW/g**  
Maximum value of SAR (measured) = 0.346 mW/g



Test Laboratory: HUAWEI SAR Lab

### U8730 GSM850 190CH Right hand tilt 15 degree

**DUT: U8730; Type: HSPA/UMTS/GPRS/GSM/EDGE Mobile Phone with Bluetooth; Serial: SAR1**

Communication System: HW-GSM/GPRS/EDGE 1TS; Frequency: 836.6 MHz

Medium parameters used:  $f = 837$  MHz;  $\sigma = 0.931$  mho/m;  $\epsilon_r = 41.744$ ;  $\rho = 1000$  kg/m<sup>3</sup>

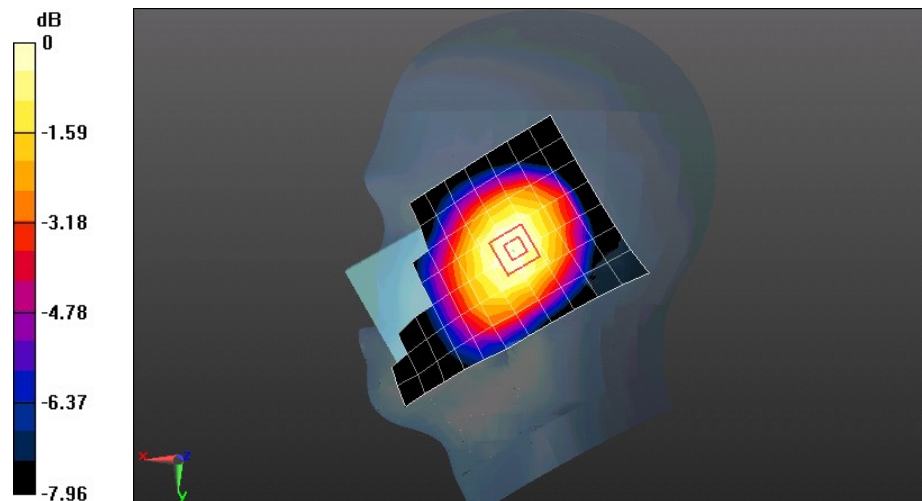
Phantom section: Right Section

DASY5 Configuration:

- Probe: ES3DV3 - SN3168; ConvF(6.07, 6.07, 6.07); Calibrated: 9/27/2011
- Sensor-Surface: 4mm (Mechanical Surface Detection),  $z = 2.0, 32.0$
- Electronics: DAE4 Sn914; Calibrated: 12/8/2011
- Phantom: SAM1; Type: SAM; Serial: TP-1475
- Measurement SW: DASY52, Version 52.8 (0); SEMCAD X Version 14.6.4 (4989)

**Configuration/Head/Area Scan (8x12x1):** Measurement grid:  $dx=15$ mm,  $dy=15$ mm  
Maximum value of SAR (measured) = 0.261 mW/g

**Configuration/Head/Zoom Scan (7x7x7)/Cube 0:** Measurement grid:  $dx=5$ mm,  $dy=5$ mm,  $dz=5$ mm  
Reference Value = 13.863 V/m; Power Drift = -0.10 dB  
Peak SAR (extrapolated) = 0.2970  
**SAR(1 g) = 0.250 mW/g; SAR(10 g) = 0.196 mW/g**  
Maximum value of SAR (measured) = 0.262 mW/g



0 dB = 0.260mW/g = -11.70 dB mW/g

Test Laboratory: HUAWEI SAR Lab

### U8730 GSM850 GPRS 1TS 190CH Towards Phantom 10 mm

**DUT: U8730; Type: HSPA/UMTS/GPRS/GSM/EDGE Mobile Phone with Bluetooth; Serial: SAR1**

Communication System: HW-GSM/GPRS/EDGE 1TS; Frequency: 836.6 MHz

Medium parameters used:  $f = 837$  MHz;  $\sigma = 0.986$  mho/m;  $\epsilon_r = 54.422$ ;  $\rho = 1000$  kg/m<sup>3</sup>

Phantom section: Flat Section

DASY Configuration:

- Probe: ES3DV3 - SN3168; ConvF(6.11, 6.11, 6.11); Calibrated: 9/27/2011
- Sensor-Surface: 4mm (Mechanical Surface Detection),  $z = 2.0, 32.0$
- Electronics: DAE4 Sn914; Calibrated: 12/8/2011
- Phantom: SAM1; Type: SAM; Serial: TP-1475
- DASY52 52.8.0(692); SEMCAD X 14.6.4(4989)

**Configuration/Body/Area Scan (8x12x1):** Measurement grid:  $dx=15$ mm,  $dy=15$ mm

Maximum value of SAR (measured) = 0.404 mW/g

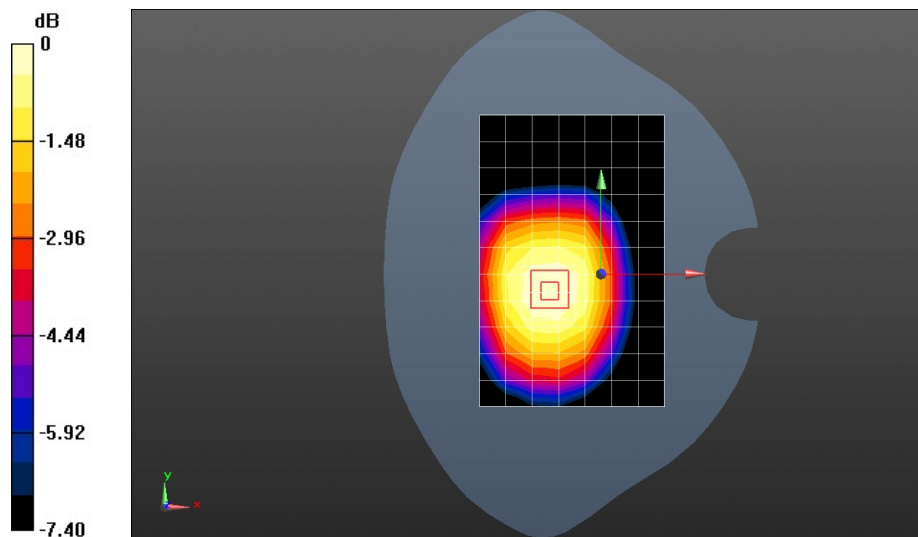
**Configuration/Body/Zoom Scan (7x7x7)/Cube 0:** Measurement grid:  $dx=5$ mm,  $dy=5$ mm,  $dz=5$ mm

Reference Value = 20.030 V/m; Power Drift = 0.05 dB

Peak SAR (extrapolated) = 0.4720

**SAR(1 g) = 0.393 mW/g; SAR(10 g) = 0.309 mW/g**

Maximum value of SAR (measured) = 0.410 mW/g



0 dB = 0.410mW/g = -7.74 dB mW/g

Test Laboratory: HUAWEI SAR Lab

### U8730 GSM850 GPRS 2TS 190CH Towards Phantom 10 mm

**DUT: U8730; Type: HSPA/UMTS/GPRS/GSM/EDGE Mobile Phone with Bluetooth; Serial: SAR1**

Communication System: HW-GSM/GPRS/EDGE 2TS; Frequency: 836.6 MHz

Medium parameters used:  $f = 837$  MHz;  $\sigma = 0.986$  mho/m;  $\epsilon_r = 54.422$ ;  $\rho = 1000$  kg/m<sup>3</sup>

Phantom section: Flat Section

DASY Configuration:

- Probe: ES3DV3 - SN3168; ConvF(6.11, 6.11, 6.11); Calibrated: 9/27/2011
- Sensor-Surface: 4mm (Mechanical Surface Detection),  $z = 2.0, 32.0$
- Electronics: DAE4 Sn914; Calibrated: 12/8/2011
- Phantom: SAM1; Type: SAM; Serial: TP-1475
- DASY52 52.8.0(692); SEMCAD X 14.6.4(4989)

**Configuration/Body/Area Scan (8x12x1):** Measurement grid:  $dx=15$ mm,  $dy=15$ mm

Maximum value of SAR (measured) = 0.443 mW/g

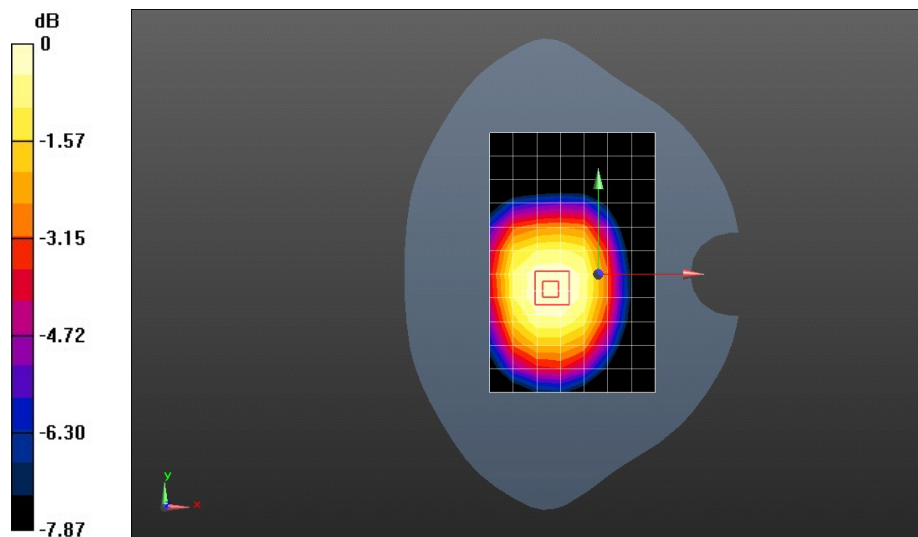
**Configuration/Body/Zoom Scan (7x7x7)/Cube 0:** Measurement grid:  $dx=5$ mm,  $dy=5$ mm,  $dz=5$ mm

Reference Value = 21.427 V/m; Power Drift = -0.19 dB

Peak SAR (extrapolated) = 0.5220

**SAR(1 g) = 0.430 mW/g; SAR(10 g) = 0.335 mW/g**

Maximum value of SAR (measured) = 0.448 mW/g



Test Laboratory: HUAWEI SAR Lab

### U8730 GSM850 GPRS 2TS 190CH Towards Ground 10 mm

**DUT: U8730; Type: HSPA/UMTS/GPRS/GSM/EDGE Mobile Phone with Bluetooth; Serial: SAR1**

Communication System: HW-GSM/GPRS/EDGE 2TS; Frequency: 836.6 MHz

Medium parameters used:  $f = 837$  MHz;  $\sigma = 0.986$  mho/m;  $\epsilon_r = 54.422$ ;  $\rho = 1000$  kg/m<sup>3</sup>

Phantom section: Flat Section

DASY Configuration:

- Probe: ES3DV3 - SN3168; ConvF(6.11, 6.11, 6.11); Calibrated: 9/27/2011
- Sensor-Surface: 4mm (Mechanical Surface Detection),  $z = 2.0, 32.0$
- Electronics: DAE4 Sn914; Calibrated: 12/8/2011
- Phantom: SAM1; Type: SAM; Serial: TP-1475
- DASY52 52.8.0(692); SEMCAD X 14.6.4(4989)

**Configuration/Body/Area Scan (8x12x1):** Measurement grid:  $dx=15$ mm,  $dy=15$ mm

Maximum value of SAR (measured) = 0.667 mW/g

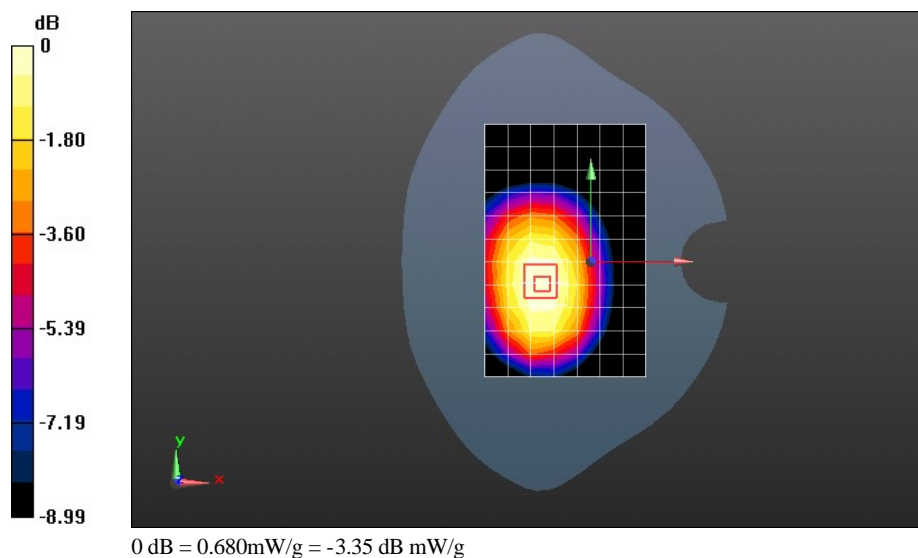
**Configuration/Body/Zoom Scan (7x7x7)/Cube 0:** Measurement grid:  $dx=5$ mm,  $dy=5$ mm,  $dz=5$ mm

Reference Value = 24.019 V/m; Power Drift = -0.13 dB

Peak SAR (extrapolated) = 0.8050

**SAR(1 g) = 0.648 mW/g; SAR(10 g) = 0.487 mW/g**

Maximum value of SAR (measured) = 0.683 mW/g





Test Laboratory: HUAWEI SAR Lab

### U8730 GSM850 GPRS 2TS 190CH Left side 10 mm

**DUT: U8730; Type: HSPA/UMTS/GPRS/GSM/EDGE Mobile Phone with Bluetooth; Serial: SAR1**

Communication System: HW-GSM/GPRS/EDGE 2TS; Frequency: 836.6 MHz

Medium parameters used:  $f = 837$  MHz;  $\sigma = 0.986$  mho/m;  $\epsilon_r = 54.422$ ;  $\rho = 1000$  kg/m<sup>3</sup>

Phantom section: Flat Section

DASY Configuration:

- Probe: ES3DV3 - SN3168; ConvF(6.11, 6.11, 6.11); Calibrated: 9/27/2011
- Sensor-Surface: 4mm (Mechanical Surface Detection),  $z = 2.0, 32.0$
- Electronics: DAE4 Sn914; Calibrated: 12/8/2011
- Phantom: SAM1; Type: SAM; Serial: TP-1475
- DASY52 52.8.0(692); SEMCAD X 14.6.4(4989)

**Configuration/Body/Area Scan (8x12x1):** Measurement grid:  $dx=15$ mm,  $dy=15$ mm

Maximum value of SAR (measured) = 0.477 mW/g

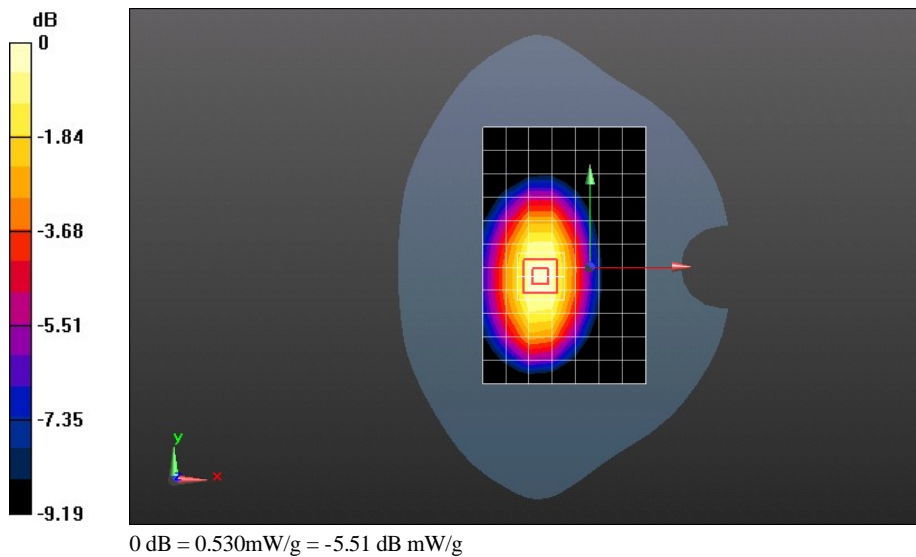
**Configuration/Body/Zoom Scan (7x7x7)/Cube 0:** Measurement grid:  $dx=5$ mm,  $dy=5$ mm,  $dz=5$ mm

Reference Value = 19.654 V/m; Power Drift = 0.04 dB

Peak SAR (extrapolated) = 0.6560

**SAR(1 g) = 0.491 mW/g; SAR(10 g) = 0.345 mW/g**

Maximum value of SAR (measured) = 0.526 mW/g



Test Laboratory: HUAWEI SAR Lab

### U8730 GSM850 GPRS 2TS 190CH Right side 10 mm

**DUT: U8730; Type: HSPA/UMTS/GPRS/GSM/EDGE Mobile Phone with Bluetooth; Serial: SAR1**

Communication System: HW-GSM/GPRS/EDGE 2TS; Frequency: 836.6 MHz

Medium parameters used:  $f = 837$  MHz;  $\sigma = 0.986$  mho/m;  $\epsilon_r = 54.422$ ;  $\rho = 1000$  kg/m<sup>3</sup>

Phantom section: Flat Section

DASY Configuration:

- Probe: ES3DV3 - SN3168; ConvF(6.11, 6.11, 6.11); Calibrated: 9/27/2011
- Sensor-Surface: 4mm (Mechanical Surface Detection),  $z = 2.0, 32.0$
- Electronics: DAE4 Sn914; Calibrated: 12/8/2011
- Phantom: SAM1; Type: SAM; Serial: TP-1475
- DASY52 52.8.0(692); SEMCAD X 14.6.4(4989)

**Configuration/Body/Area Scan (8x12x1):** Measurement grid:  $dx=15$ mm,  $dy=15$ mm

Maximum value of SAR (measured) = 0.459 mW/g

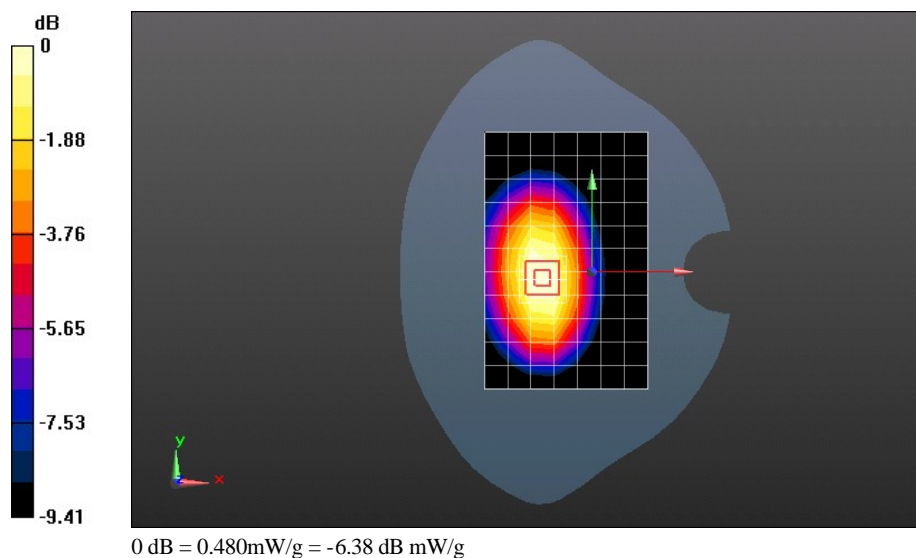
**Configuration/Body/Zoom Scan (7x7x7)/Cube 0:** Measurement grid:  $dx=5$ mm,  $dy=5$ mm,  $dz=5$ mm

Reference Value = 19.634 V/m; Power Drift = -0.13 dB

Peak SAR (extrapolated) = 0.6080

**SAR(1 g) = 0.446 mW/g; SAR(10 g) = 0.312 mW/g**

Maximum value of SAR (measured) = 0.477 mW/g



Test Laboratory: HUAWEI SAR Lab

### U8730 GSM850 GPRS 2TS 190CH Bottom side 10 mm

**DUT: U8730; Type: HSPA/UMTS/GPRS/GSM/EDGE Mobile Phone with Bluetooth; Serial: SAR1**

Communication System: HW-GSM/GPRS/EDGE 2TS; Frequency: 836.6 MHz

Medium parameters used:  $f = 837$  MHz;  $\sigma = 0.986$  mho/m;  $\epsilon_r = 54.422$ ;  $\rho = 1000$  kg/m<sup>3</sup>

Phantom section: Flat Section

DASY Configuration:

- Probe: ES3DV3 - SN3168; ConvF(6.11, 6.11, 6.11); Calibrated: 9/27/2011
- Sensor-Surface: 4mm (Mechanical Surface Detection),  $z = 2.0, 32.0$
- Electronics: DAE4 Sn914; Calibrated: 12/8/2011
- Phantom: SAM1; Type: SAM; Serial: TP-1475
- DASY52 52.8.0(692); SEMCAD X 14.6.4(4989)

**Configuration/Body/Area Scan (8x11x1):** Measurement grid:  $dx=15$ mm,  $dy=15$ mm

Maximum value of SAR (measured) = 0.106 mW/g

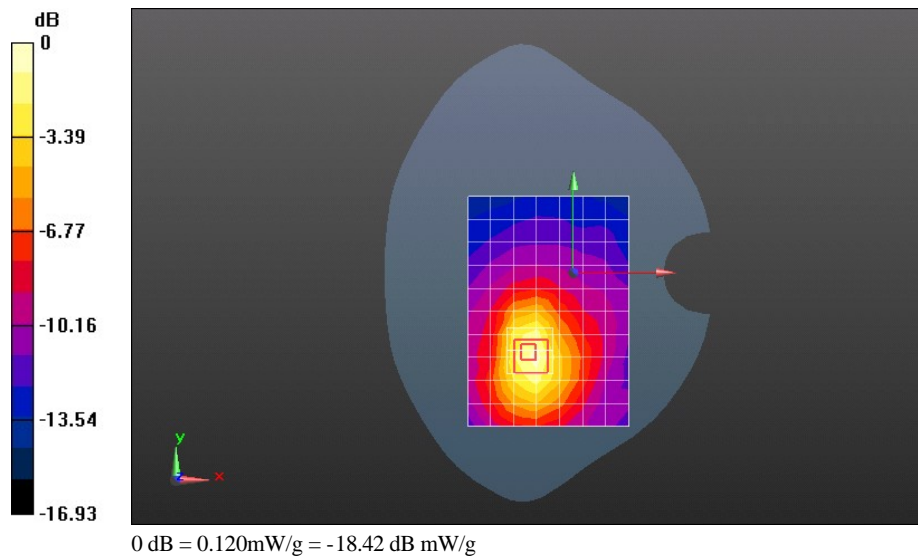
**Configuration/Body/Zoom Scan (7x7x7)/Cube 0:** Measurement grid:  $dx=5$ mm,  $dy=5$ mm,  $dz=5$ mm

Reference Value = 3.767 V/m; Power Drift = -0.03 dB

Peak SAR (extrapolated) = 0.1990

**SAR(1 g) = 0.108 mW/g; SAR(10 g) = 0.061 mW/g**

Maximum value of SAR (measured) = 0.120 mW/g



Test Laboratory: HUAWEI SAR Lab

### U8730 GSM850 EGPRS 1TS 190CH Towards Ground 10 mm

**DUT: U8730; Type: HSPA/UMTS/GPRS/GSM/EDGE Mobile Phone with Bluetooth; Serial: SAR1**

Communication System: HW-GSM/GPRS/EDGE 1TS; Frequency: 836.6 MHz

Medium parameters used:  $f = 837$  MHz;  $\sigma = 0.986$  mho/m;  $\epsilon_r = 54.422$ ;  $\rho = 1000$  kg/m<sup>3</sup>

Phantom section: Flat Section

DASY Configuration:

- Probe: ES3DV3 - SN3168; ConvF(6.11, 6.11, 6.11); Calibrated: 9/27/2011
- Sensor-Surface: 4mm (Mechanical Surface Detection),  $z = 2.0, 32.0$
- Electronics: DAE4 Sn914; Calibrated: 12/8/2011
- Phantom: SAM1; Type: SAM; Serial: TP-1475
- DASY52 52.8.0(692); SEMCAD X 14.6.4(4989)

**Configuration/Body/Area Scan (8x12x1):** Measurement grid:  $dx=15$ mm,  $dy=15$ mm

Maximum value of SAR (measured) = 0.628 mW/g

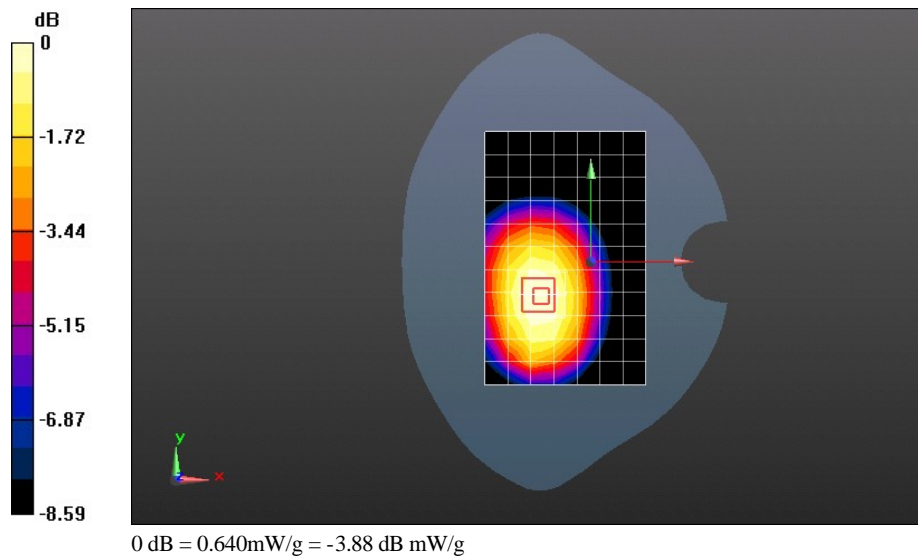
**Configuration/Body/Zoom Scan (7x7x7)/Cube 0:** Measurement grid:  $dx=5$ mm,  $dy=5$ mm,  $dz=5$ mm

Reference Value = 21.448 V/m; Power Drift = -0.01 dB

Peak SAR (extrapolated) = 0.7410

**SAR(1 g) = 0.607 mW/g; SAR(10 g) = 0.462 mW/g**

Maximum value of SAR (measured) = 0.641 mW/g



Test Laboratory: HUAWEI SAR Lab

**U8730 GSM850 EGPRS 2TS 190CH Towards Ground 10 mm**

**DUT: U8730; Type: HSPA/UMTS/GPRS/GSM/EDGE Mobile Phone with Bluetooth; Serial: SAR1**

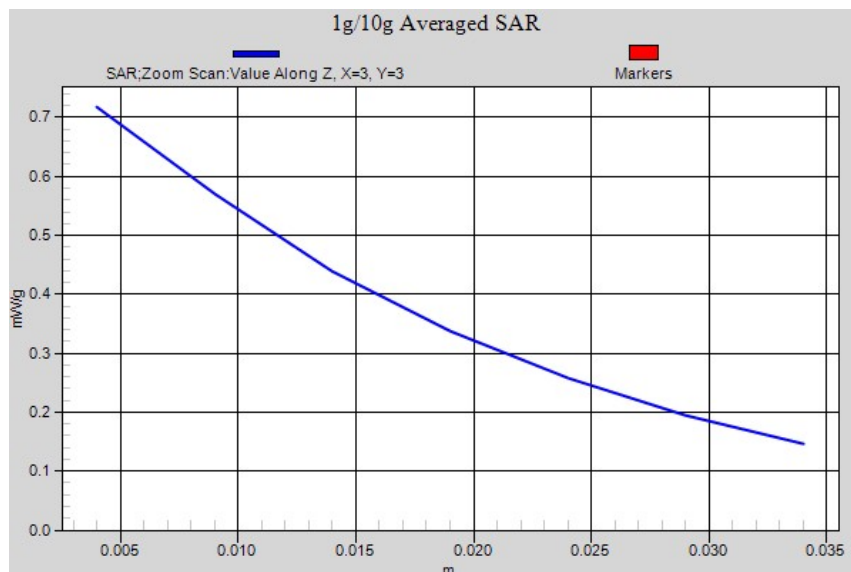
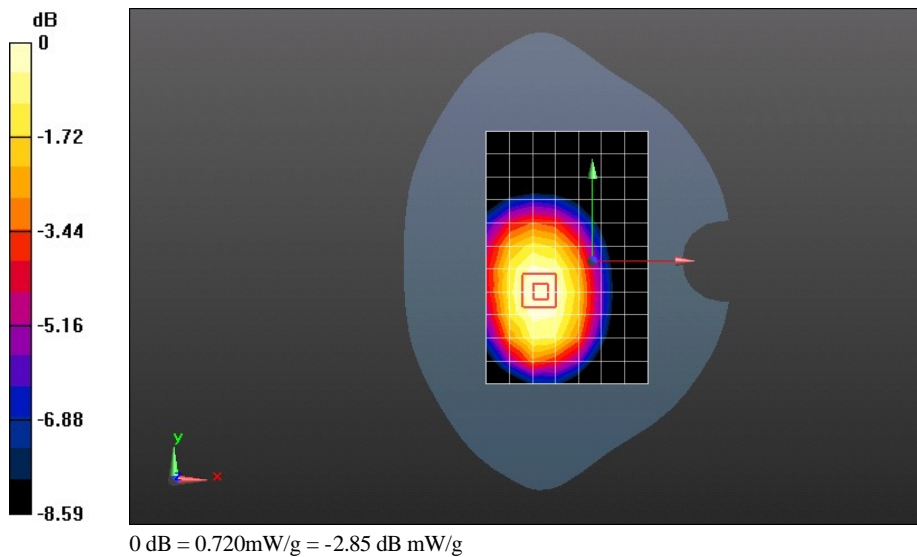
Communication System: HW-GSM/GPRS/EDGE 2TS; Frequency: 836.6 MHz  
 Medium parameters used:  $f = 837$  MHz;  $\sigma = 0.986$  mho/m;  $\epsilon_r = 54.422$ ;  $\rho = 1000$  kg/m<sup>3</sup>  
 Phantom section: Flat Section

DASY Configuration:

- Probe: ES3DV3 - SN3168; ConvF(6.11, 6.11, 6.11); Calibrated: 9/27/2011
- Sensor-Surface: 4mm (Mechanical Surface Detection), z = 2.0, 32.0
- Electronics: DAE4 Sn914; Calibrated: 12/8/2011
- Phantom: SAM1; Type: SAM; Serial: TP-1475
- DASY52 52.8.0(692); SEMCAD X 14.6.4(4989)

**Configuration/Body/Area Scan (8x12x1):** Measurement grid: dx=15mm, dy=15mm  
 Maximum value of SAR (measured) = 0.720 mW/g

**Configuration/Body/Zoom Scan (7x7x7)/Cube 0:** Measurement grid: dx=5mm, dy=5mm, dz=5mm  
 Reference Value = 23.100 V/m; Power Drift = -0.16 dB  
 Peak SAR (extrapolated) = 0.8430  
**SAR(1 g) = 0.681 mW/g; SAR(10 g) = 0.512 mW/g**  
 Maximum value of SAR (measured) = 0.717 mW/g



Test Laboratory: HUAWEI SAR Lab

**U8730 GSM850 GPRS 1TS 190CH Towards Phantom 15 mm****DUT: U8730; Type: HSPA/UMTS/GPRS/GSM/EDGE Mobile Phone with Bluetooth; Serial: SAR1**

Communication System: HW-GSM/GPRS/EDGE 1TS; Frequency: 836.6 MHz

Medium parameters used:  $f = 837$  MHz;  $\sigma = 0.986$  mho/m;  $\epsilon_r = 54.422$ ;  $\rho = 1000$  kg/m<sup>3</sup>

Phantom section: Flat Section

DASY Configuration:

- Probe: ES3DV3 - SN3168; ConvF(6.11, 6.11, 6.11); Calibrated: 9/27/2011
- Sensor-Surface: 4mm (Mechanical Surface Detection),  $z = 2.0, 32.0$
- Electronics: DAE4 Sn914; Calibrated: 12/8/2011
- Phantom: SAM1; Type: SAM; Serial: TP-1475
- DASY52 52.8.0(692); SEMCAD X 14.6.4(4989)

**Configuration/Body/Area Scan (8x12x1):** Measurement grid:  $dx=15$ mm,  $dy=15$ mm

Maximum value of SAR (measured) = 0.376 mW/g

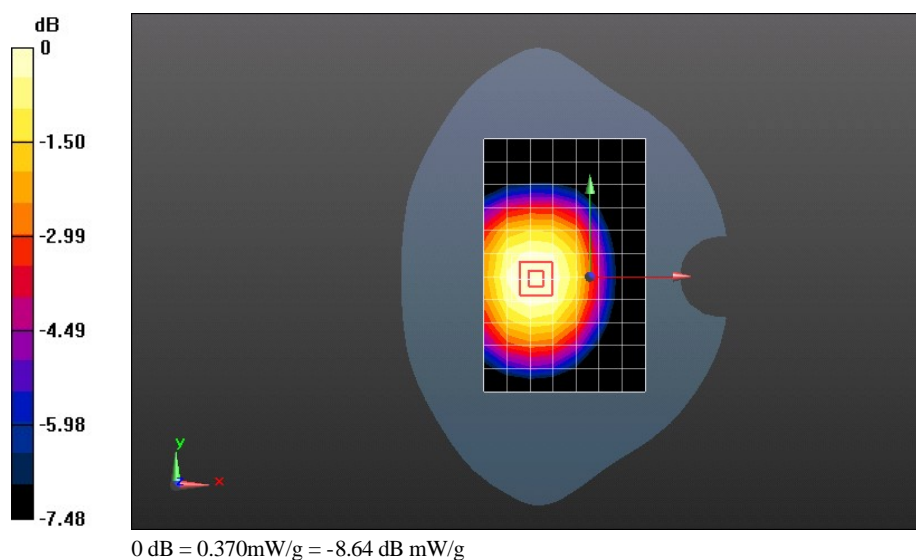
**Configuration/Body/Zoom Scan (7x7x7)/Cube 0:** Measurement grid:  $dx=5$ mm,  $dy=5$ mm,  $dz=5$ mm

Reference Value = 18.746 V/m; Power Drift = -0.11 dB

Peak SAR (extrapolated) = 0.4340

**SAR(1 g) = 0.356 mW/g; SAR(10 g) = 0.276 mW/g**

Maximum value of SAR (measured) = 0.372 mW/g



Test Laboratory: HUAWEI SAR Lab

**U8730 GSM850 GPRS 2TS 190CH Towards Phantom 15 mm****DUT: U8730; Type: HSPA/UMTS/GPRS/GSM/EDGE Mobile Phone with Bluetooth; Serial: SAR1**

Communication System: HW-GSM/GPRS/EDGE 2TS; Frequency: 836.6 MHz

Medium parameters used:  $f = 837$  MHz;  $\sigma = 0.986$  mho/m;  $\epsilon_r = 54.422$ ;  $\rho = 1000$  kg/m<sup>3</sup>

Phantom section: Flat Section

DASY Configuration:

- Probe: ES3DV3 - SN3168; ConvF(6.11, 6.11, 6.11); Calibrated: 9/27/2011
- Sensor-Surface: 4mm (Mechanical Surface Detection),  $z = 2.0, 32.0$
- Electronics: DAE4 Sn914; Calibrated: 12/8/2011
- Phantom: SAM1; Type: SAM; Serial: TP-1475
- DASY52 52.8.0(692); SEMCAD X 14.6.4(4989)

**Configuration/Body/Area Scan (8x12x1):** Measurement grid:  $dx=15$ mm,  $dy=15$ mm

Maximum value of SAR (measured) = 0.400 mW/g

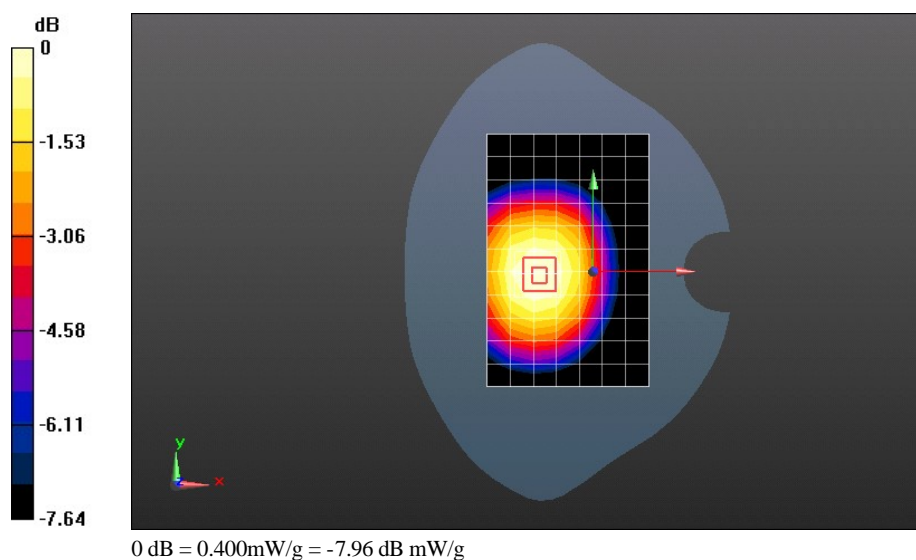
**Configuration/Body/Zoom Scan (7x7x7)/Cube 0:** Measurement grid:  $dx=5$ mm,  $dy=5$ mm,  $dz=5$ mm

Reference Value = 19.472 V/m; Power Drift = -0.09 dB

Peak SAR (extrapolated) = 0.4660

**SAR(1 g) = 0.377 mW/g; SAR(10 g) = 0.290 mW/g**

Maximum value of SAR (measured) = 0.395 mW/g



Test Laboratory: HUAWEI SAR Lab

### U8730 GSM850 EGPRS 1TS 190CH Towards Ground 15 mm

**DUT: U8730; Type: HSPA/UMTS/GPRS/GSM/EDGE Mobile Phone with Bluetooth; Serial: SAR1**

Communication System: HW-GSM/GPRS/EDGE 1TS; Frequency: 836.6 MHz

Medium parameters used:  $f = 837$  MHz;  $\sigma = 0.986$  mho/m;  $\epsilon_r = 54.422$ ;  $\rho = 1000$  kg/m<sup>3</sup>

Phantom section: Flat Section

DASY Configuration:

- Probe: ES3DV3 - SN3168; ConvF(6.11, 6.11, 6.11); Calibrated: 9/27/2011
- Sensor-Surface: 4mm (Mechanical Surface Detection),  $z = 2.0, 32.0$
- Electronics: DAE4 Sn914; Calibrated: 12/8/2011
- Phantom: SAM1; Type: SAM; Serial: TP-1475
- DASY52 52.8.0(692); SEMCAD X 14.6.4(4989)

**Configuration/Body/Area Scan (8x11x1):** Measurement grid:  $dx=15$ mm,  $dy=15$ mm

Maximum value of SAR (measured) = 0.493 mW/g

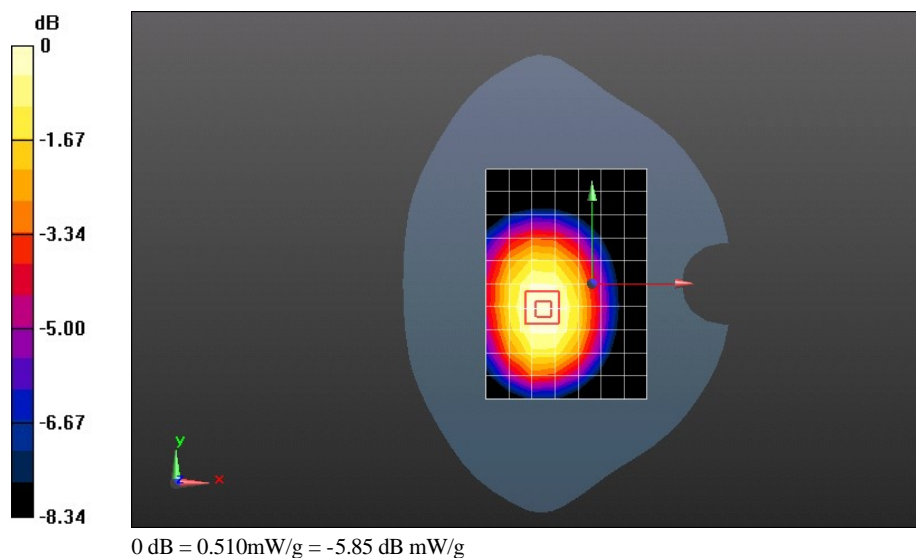
**Configuration/Body/Zoom Scan (7x7x7)/Cube 0:** Measurement grid:  $dx=5$ mm,  $dy=5$ mm,  $dz=5$ mm

Reference Value = 20.485 V/m; Power Drift = 0.05 dB

Peak SAR (extrapolated) = 0.6010

**SAR(1 g) = 0.486 mW/g; SAR(10 g) = 0.368 mW/g**

Maximum value of SAR (measured) = 0.511 mW/g





Test Laboratory: HUAWEI SAR Lab

### U8730 GSM850 EGPRS 2TS 190CH Towards Ground 15 mm

**DUT: U8730; Type: HSPA/UMTS/GPRS/GSM/EDGE Mobile Phone with Bluetooth; Serial: SAR1**

Communication System: HW-GSM/GPRS/EDGE 2TS; Frequency: 836.6 MHz

Medium parameters used:  $f = 837$  MHz;  $\sigma = 0.986$  mho/m;  $\epsilon_r = 54.422$ ;  $\rho = 1000$  kg/m<sup>3</sup>

Phantom section: Flat Section

DASY Configuration:

- Probe: ES3DV3 - SN3168; ConvF(6.11, 6.11, 6.11); Calibrated: 9/27/2011
- Sensor-Surface: 4mm (Mechanical Surface Detection),  $z = 2.0, 32.0$
- Electronics: DAE4 Sn914; Calibrated: 12/8/2011
- Phantom: SAM1; Type: SAM; Serial: TP-1475
- DASY52 52.8.0(692); SEMCAD X 14.6.4(4989)

**Configuration/Body/Area Scan (8x11x1):** Measurement grid:  $dx=15$ mm,  $dy=15$ mm

Maximum value of SAR (measured) = 0.555 mW/g

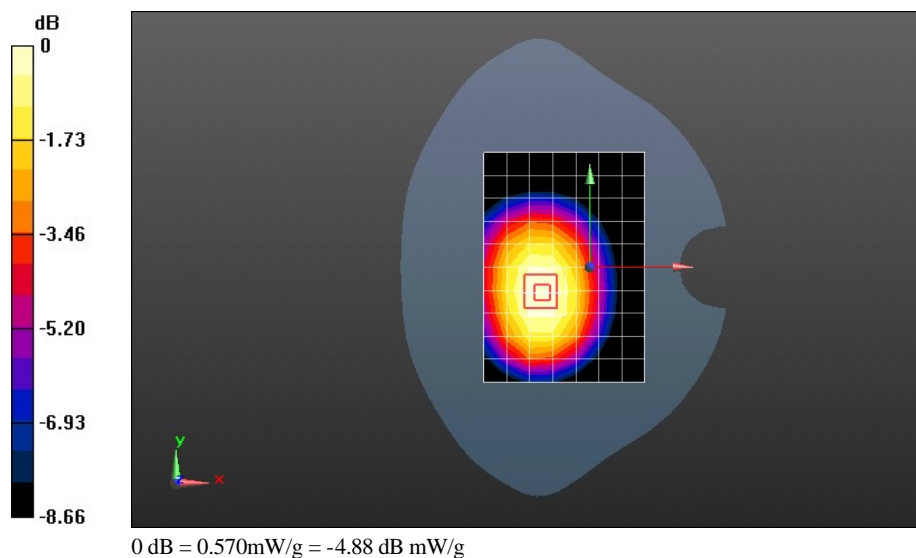
**Configuration/Body/Zoom Scan (7x7x7)/Cube 0:** Measurement grid:  $dx=5$ mm,  $dy=5$ mm,  $dz=5$ mm

Reference Value = 21.770 V/m; Power Drift = -0.11 dB

Peak SAR (extrapolated) = 0.6660

**SAR(1 g) = 0.537 mW/g; SAR(10 g) = 0.403 mW/g**

Maximum value of SAR (measured) = 0.567 mW/g



Test Laboratory: HUAWEI SAR Lab

### U8730 GSM850 190CH Towards Ground 15 mm with Headset

**DUT: U8730; Type: HSPA/UMTS/GPRS/GSM/EDGE Mobile Phone with Bluetooth; Serial: SAR1**

Communication System: HW-GSM/GPRS/EDGE 1TS; Frequency: 836.6 MHz

Medium parameters used:  $f = 837$  MHz;  $\sigma = 0.986$  mho/m;  $\epsilon_r = 54.422$ ;  $\rho = 1000$  kg/m<sup>3</sup>

Phantom section: Flat Section

DASY Configuration:

- Probe: ES3DV3 - SN3168; ConvF(6.11, 6.11, 6.11); Calibrated: 9/27/2011
- Sensor-Surface: 4mm (Mechanical Surface Detection),  $z = 2.0, 32.0$
- Electronics: DAE4 Sn914; Calibrated: 12/8/2011
- Phantom: SAM1; Type: SAM; Serial: TP-1475
- DASY52 52.8.0(692); SEMCAD X 14.6.4(4989)

**Configuration/Body/Area Scan (8x12x1):** Measurement grid:  $dx=15$ mm,  $dy=15$ mm

Maximum value of SAR (measured) = 0.343 mW/g

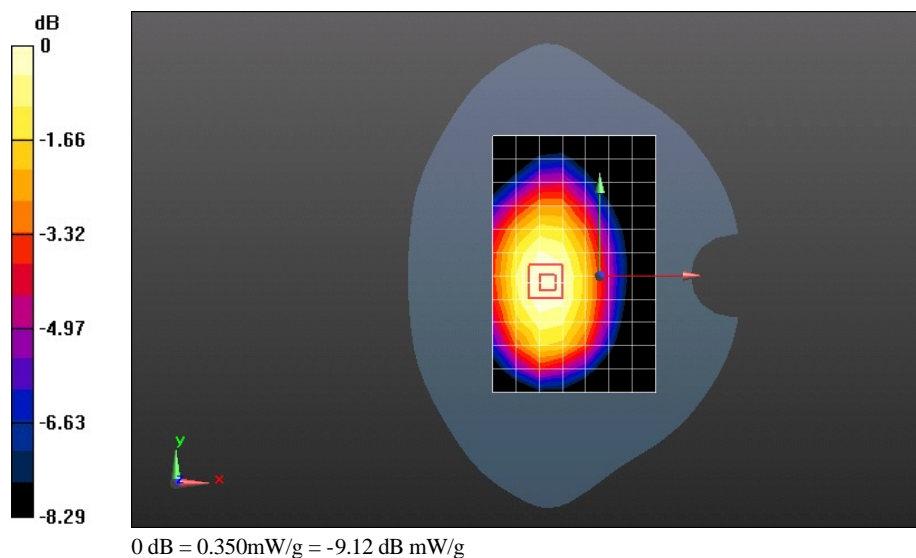
**Configuration/Body/Zoom Scan (7x7x7)/Cube 0:** Measurement grid:  $dx=5$ mm,  $dy=5$ mm,  $dz=5$ mm

Reference Value = 17.318 V/m; Power Drift = 0.07 dB

Peak SAR (extrapolated) = 0.4130

**SAR(1 g) = 0.333 mW/g; SAR(10 g) = 0.252 mW/g**

Maximum value of SAR (measured) = 0.351 mW/g



Test Laboratory: HUAWEI SAR Lab

### U8730 GSM850 GPRS 2TS 190CH Towards Ground 15 mm

**DUT: U8730; Type: HSPA/UMTS/GPRS/GSM/EDGE Mobile Phone with Bluetooth; Serial: SAR1**

Communication System: HW-GSM/GPRS/EDGE 2TS; Frequency: 836.6 MHz

Medium parameters used:  $f = 837$  MHz;  $\sigma = 0.986$  mho/m;  $\epsilon_r = 54.422$ ;  $\rho = 1000$  kg/m<sup>3</sup>

Phantom section: Flat Section

DASY Configuration:

- Probe: ES3DV3 - SN3168; ConvF(6.11, 6.11, 6.11); Calibrated: 9/27/2011
- Sensor-Surface: 4mm (Mechanical Surface Detection),  $z = 2.0, 32.0$
- Electronics: DAE4 Sn914; Calibrated: 12/8/2011
- Phantom: SAM1; Type: SAM; Serial: TP-1475
- DASY52 52.8.0(692); SEMCAD X 14.6.4(4989)

**Configuration/Body/Area Scan (8x12x1):** Measurement grid:  $dx=15$ mm,  $dy=15$ mm

Maximum value of SAR (measured) = 0.592 mW/g

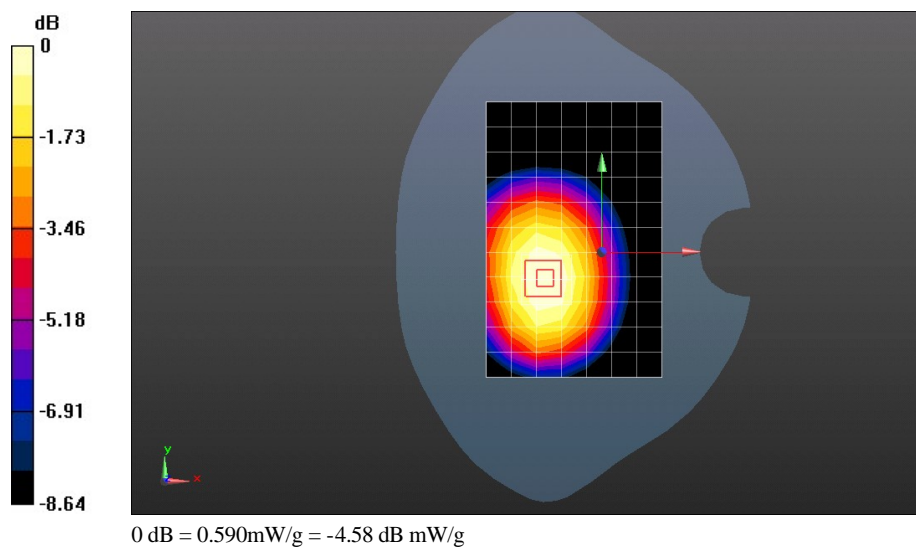
**Configuration/Body/Zoom Scan (7x7x7)/Cube 0:** Measurement grid:  $dx=5$ mm,  $dy=5$ mm,  $dz=5$ mm

Reference Value = 22.029 V/m; Power Drift = -0.06 dB

Peak SAR (extrapolated) = 0.7000

**SAR(1 g) = 0.562 mW/g; SAR(10 g) = 0.421 mW/g**

Maximum value of SAR (measured) = 0.593 mW/g



Test Laboratory: HUAWEI SAR Lab

### U8730 GSM1900 661CH Left hand touch cheek

**DUT: U8730; Type: HSPA/UMTS/GPRS/GSM/EDGE Mobile Phone with Bluetooth; Serial: SAR1**

Communication System: HW-GSM/GPRS/EDGE 1TS; Frequency: 1880 MHz

Medium parameters used:  $f = 1880$  MHz;  $\sigma = 1.422$  mho/m;  $\epsilon_r = 39.435$ ;  $\rho = 1000$  kg/m<sup>3</sup>

Phantom section: Left Section

DASY5 Configuration:

- Probe: ES3DV3 - SN3168; ConvF(5.1, 5.1, 5.1); Calibrated: 9/27/2011
- Sensor-Surface: 4mm (Mechanical Surface Detection),  $z = 2.0, 32.0$
- Electronics: DAE4 Sn914; Calibrated: 12/8/2011
- Phantom: SAM 2; Type: SAM; Serial: TP-1474
- Measurement SW: DASY52, Version 52.8 (0); SEMCAD X Version 14.6.4 (4989)

**Configuration/Head/Area Scan (9x12x1):** Measurement grid:  $dx=15$ mm,  $dy=15$ mm

Maximum value of SAR (measured) = 0.148 mW/g

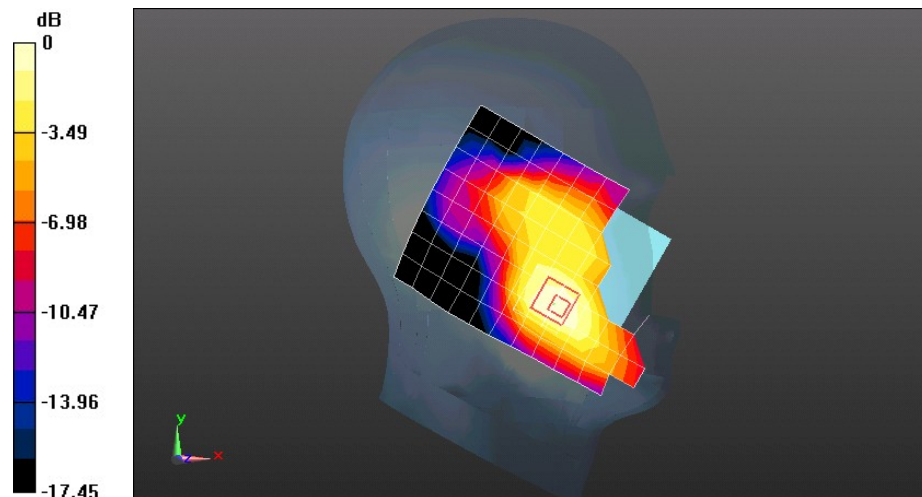
**Configuration/Head/Zoom Scan (7x7x7)/Cube 0:** Measurement grid:  $dx=5$ mm,  $dy=5$ mm,  $dz=5$ mm

Reference Value = 3.885 V/m; Power Drift = 0.10 dB

Peak SAR (extrapolated) = 0.2560

**SAR(1 g) = 0.157 mW/g; SAR(10 g) = 0.097 mW/g**

Maximum value of SAR (measured) = 0.170 mW/g



0 dB = 0.170mW/g = -15.39 dB mW/g

Test Laboratory: HUAWEI SAR Lab

### U8730 GSM1900 661CH Left hand tilt 15 degree

**DUT: U8730; Type: HSPA/UMTS/GPRS/GSM/EDGE Mobile Phone with Bluetooth; Serial: SAR1**

Communication System: HW-GSM/GPRS/EDGE 1TS; Frequency: 1880 MHz

Medium parameters used:  $f = 1880$  MHz;  $\sigma = 1.422$  mho/m;  $\epsilon_r = 39.435$ ;  $\rho = 1000$  kg/m<sup>3</sup>

Phantom section: Left Section

DASY5 Configuration:

- Probe: ES3DV3 - SN3168; ConvF(5.1, 5.1, 5.1); Calibrated: 9/27/2011
- Sensor-Surface: 4mm (Mechanical Surface Detection),  $z = 2.0, 32.0$
- Electronics: DAE4 Sn914; Calibrated: 12/8/2011
- Phantom: SAM 2; Type: SAM; Serial: TP-1474
- Measurement SW: DASY52, Version 52.8 (0); SEMCAD X Version 14.6.4 (4989)

**Configuration/Head/Area Scan (9x12x1):** Measurement grid:  $dx=15$ mm,  $dy=15$ mm  
Maximum value of SAR (measured) = 0.086 mW/g

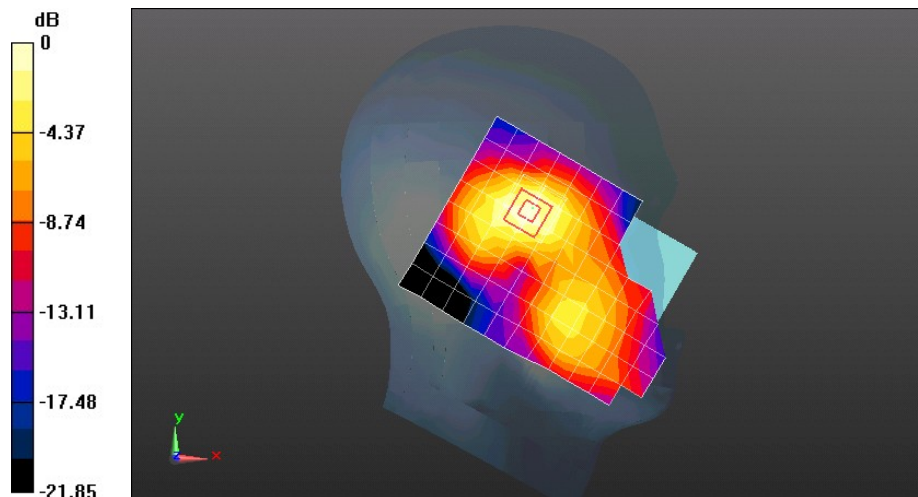
**Configuration/Head/Zoom Scan (7x7x7)/Cube 0:** Measurement grid:  $dx=5$ mm,  $dy=5$ mm,  $dz=5$ mm

Reference Value = 5.866 V/m; Power Drift = 0.02 dB

Peak SAR (extrapolated) = 0.1290

**SAR(1 g) = 0.082 mW/g; SAR(10 g) = 0.049 mW/g**

Maximum value of SAR (measured) = 0.089 mW/g



0 dB = 0.090mW/g = -20.92 dB mW/g

Test Laboratory: HUAWEI SAR Lab

### U8730 GSM1900 661CH Right hand tilt 15 degree

**DUT: U8730; Type: HSPA/UMTS/GPRS/GSM/EDGE Mobile Phone with Bluetooth; Serial: SAR1**

Communication System: HW-GSM/GPRS/EDGE 1TS; Frequency: 1880 MHz

Medium parameters used:  $f = 1880$  MHz;  $\sigma = 1.422$  mho/m;  $\epsilon_r = 39.435$ ;  $\rho = 1000$  kg/m<sup>3</sup>

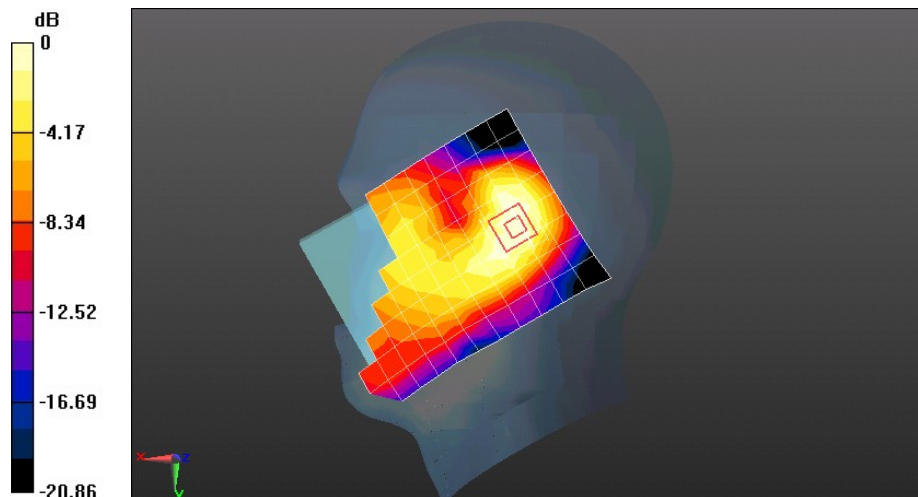
Phantom section: Right Section

DASY5 Configuration:

- Probe: ES3DV3 - SN3168; ConvF(5.1, 5.1, 5.1); Calibrated: 9/27/2011
- Sensor-Surface: 4mm (Mechanical Surface Detection),  $z = 2.0, 32.0$
- Electronics: DAE4 Sn914; Calibrated: 12/8/2011
- Phantom: SAM 2; Type: SAM; Serial: TP-1474
- Measurement SW: DASY52, Version 52.8 (0); SEMCAD X Version 14.6.4 (4989)

**Configuration/Head/Area Scan (9x12x1):** Measurement grid:  $dx=15$ mm,  $dy=15$ mm  
Maximum value of SAR (measured) = 0.061 mW/g

**Configuration/Head/Zoom Scan (7x7x7)/Cube 0:** Measurement grid:  $dx=5$ mm,  $dy=5$ mm,  $dz=5$ mm  
Reference Value = 6.667 V/m; Power Drift = -0.07 dB  
Peak SAR (extrapolated) = 0.0930  
**SAR(1 g) = 0.058 mW/g; SAR(10 g) = 0.035 mW/g**  
Maximum value of SAR (measured) = 0.062 mW/g



0 dB = 0.060mW/g = -24.44 dB mW/g