

FCC SAR Test Report

FCC ID: QISTR-T-L53

Project No. : 1702C185A
Equipment : Smart Phone
Model Name : TRT-L53
Applicant : Huawei Technologies Co.,Ltd.
Address : Administration Building, Headquarters of Huawei Technologies Co., Ltd., Bantian, Longgang District, Shenzhen, 518129, P.R.C

Date of Receipt : Feb. 27, 2017
Date of Test : Feb. 28, 2017 ~ Mar. 06, 2017
Issued Date : Mar. 14, 2017
Tested by : BTL Inc.

PREPARED BY : _____
(Super Jiang/ Technical Engineer)

APPROVED BY : _____
(Steven Lu / Technical Manager)

B T L I N C .

No.3, Jinshagang 1st Road, Shixia, Dalang Town, Dongguan, Guangdong, China.

TEL: +86-769-8318-3000 FAX: +86-769-8319-6000



Declaration

BTL represents to the client that testing is done in accordance with standard procedures as applicable and that test instruments used has been calibrated with the standards traceable to National Measurement Laboratory (**NML**), or National Institute of Standards and Technology (**NIST**) .

BTL's reports apply only to the specific samples tested under conditions. It is manufacture's responsibility to ensure that additional production units of this model are manufactured with the identical electrical and mechanical components. **BTL** shall have no liability for any declarations, inferences or generalizations drawn by the client or others from **BTL** issued reports.

BTL's reports must not be used by the client to claim product endorsement by the authorities or any agency of the Government.

This report is the confidential property of the client. As a mutual protection to the clients, the public and **BTL-self**, extracts from the test report shall not be reproduced except in full with **BTL's** authorized written approval.

BTL's laboratory quality assurance procedures are in compliance with the **ISO Guide17025** requirements, and accredited by the conformity assessment authorities listed in this test report.

Limitation

For the use of the authority's logo is limited unless the Test Standard(s)/Scope(s)/Item(s) mentioned in this test report is (are) included in the conformity assessment authorities acceptance respective.

Table of Contents	Page
1 . GENERAL SUMMARY	6
2 . RF EMISSIONS MEASUREMENT	7
2.1 TEST FACILITY	7
2.2 MEASUREMENT UNCERTAINTY	7
3 . GENERAL INFORMATION	8
3.1 STATEMENT OF COMPLIANCE	8
3.2 GENERAL DESCRIPTION OF EUT	9
3.3 HOTSPOT POWER REDUCTION SPECIFICATION FOR SAR	11
3.4 SAR SENSOR WORKING	11
3.4.1 DESCRIPTION OF PROXIMITY SENSOR TECHNIQUES	12
3.4.2 POWER REDUCTION OPERATION TABLE	12
3.5 LABORATORY ENVIRONMENT	13
3.6 MAIN TEST INSTRUMENTS	14
4 .SAR MEASUREMENTS SYSTEM CONFIGURATION	15
4.1 SAR MEASUREMENT SET-UP	15
4.2 DASY5E-FIELDPROBESYSTEM	16
5 . SYSTEM VERIFICATION PROCEDURE	24
5.1 TISSUE VERIFICATION	24
5.2 SYSTEM CHECK	26
5.3 SYSTEM CHECK PROCEDURE	27
6 .SAR MEASUREMENT VARIABILITY AND UNCERTAINTY	28
6.1 SAR MEASUREMENT VARIABILITY	28
7 . OPERATIONAL CONDITIONS DURING TEST	29
7.1 SAR TEST CONFIGURATION	29
7.1.1 GSM TEST CONFIGURATION	29
7.1.2 UMTS TEST CONFIGURATION	30
7.1.3 LTE TEST CONFIGURATION	36
7.1.4 WIFI TEST CONFIGURATION	38
7.2 TEST POSITION	39
7.2.1 HEAD TEST CONFIGURATION	39
7.2.2 BODY-WORN TEST CONFIGURATION	40
7.2.3 HOTSPOT TEST CONFIGURATION	40
7.2.4 PRODUCT SPECIFIC 10-G SAR TEST CONFIGURATION	40

Table of Contents	Page
8 .TEST RESULT	42
8.1 CONDUCTED POWER RESULTS	42
8.2 SAR TEST RESULTS	73
8.3 MULTIPLE TRANSMITTER EVALUATION	90
APPENDIX	95
1. TEST LAYOUT	95
Appendix A. SAR Plots of System Verification	
Appendix B. SAR Plots of SAR Measurement	
Appendix C. Calibration Certificate for Probe and Dipole	
Appendix D. Photographs of the Test Set-Up	

REPORT ISSUED HISTORY

Issued No.	Description	Issued Date
BTL-FCC SAR-1-1702C185	Original Issue	Mar. 10, 2017
BTL-FCC SAR-1-1702C185A	Compared with the original report (BTL-FCC SAR-1-1702C185), one SIM card is deleted.	Mar. 14, 2017

Note: According to the differences description above, TRT-L53 shares the same test data of TRT-LX3 of the same bands. In addition, all the worst cases are evaluated and recorded in this test report.

For more model difference information, please see the below table.

Project ID	1702C185	1702C185A
Model	TRT-LX3	TRT-L53
Trade mark	HUAWEI	HUAWEI
Frequency	GSM B2 /B5 UMTS B2/B4/B5 LTE B2/B4/B5/B7	GSM B2/ B5 UMTS B2/B4/B5 LTE B2/B4/B5/B7/B12/B17 Frequency disabled or added by software, Changes are followed: 1. add B12/17 duplexer. 2. add B12/17 div SAW
SIM Card	Double	Single
Hardware Version	The same	The same
Software Version	Different	Different
Dimensions	The same	The same
Appearance	The same	The same
main antenna	the same	the same
BT/Wi-Fi antenna	the same	the same
DIV antenna	the same	the same
Others	RAM 2G ROM 16G	RAM 3G ROM 32G Add fingerprint

1. GENERAL SUMMARY

Equipment	Smart Phone
Brand Name	HUAWEI
Model Name	TRT-L53
Model difference	N/A
Manufacturer	Huawei Technologies Co.,Ltd.
Address	Administration Building, Headquarters of Huawei Technologies Co., Ltd., Bantian, Longgang District, Shenzhen, 518129, P.R.C
Standard(s)	<p>ANSI Std C95.1-1992 Safety Levels with Respect to Human Exposure to Radio Frequency Electromagnetic Fields, 3 kHz – 300 GHz.(IEEE Std C95.1-1991)</p> <p>IEEE Std 1528-2013 Recommended Practice for Determining the Peak Spatial-Average Specific Absorption Rate (SAR) in the Human Head from Wireless Communications Devices: Measurement Techniques</p> <p>KDB941225 D01 3G SAR Procedures v03r01 KDB941225 D05 SAR for LTE Devices v02r05 KDB941225 D06 Hotspot Mode V02r01 KDB447498 D01 General RF Exposure Guidance v06 KDB648474 D04 Handset SAR v01r03 KDB248227 D01 802. 11 Wi-Fi SAR v02r02 KDB865664 D01 SAR measurement 100 MHz to 6 GHz v01r04 KDB865664 D02 SAR Reporting v01r02 KDB690783 D01 SAR Listings on Grants v01r03</p>

The above equipment has been tested and found compliance with the requirement of the relative standards by BTL Inc.

The test data, data evaluation, and equipment configuration contained in our test report (Ref No. BTL-FCC SAR-1-1702C185A) were obtained utilizing the test procedures, test instruments, test sites that has been accredited by the Authority of TAF according to the ISO-17025 quality assessment standard and technical standard(s).

2. RF EMISSIONS MEASUREMENT

2.1 TEST FACILITY

The test facilities used to collect the test data in this report is **SAR room** at the location of No.3,Jinshagang 1st Road, ShiXia, Dalang Town,Dong Guan, China.523792

2.2 MEASUREMENT UNCERTAINTY

Note: Per KDB865664 D01 SAR Measurement 100 MHz to 6 GHz, when the highest measured 1-g SAR within a frequency band is < 1.5 W/kg, the extensive SAR measurement uncertainty analysis described in IEEE Std 1528-2013 is not required in SAR reports submitted for equipment approval. The equivalent ratio (1.5/1.6) is applied to extremity and occupational exposure conditions.

3. GENERAL INFORMATION

3.1 STATEMENT OF COMPLIANCE

Equipment Class	Mode	Highest Head SAR-1g (W/kg)	Highest Body-worn(15mm) SAR-1g(W/kg)*	Highest Hotspot(10mm) SAR-1g(W/kg)	Highest product specific 10-g SAR (W/kg)**
PCE	GSM850	0.31	0.49	0.42	-
	GSM1900	0.27	0.29	0.34	-
	UMTS Band 2	0.43	0.43	0.72	-
	UMTS Band 4	0.29	0.83	0.92	3.54
	UMTS Band 5	0.31	0.51	0.53	-
	LTE Band 2	0.47	0.39	0.54	-
	LTE Band 4	0.35	0.72	0.65	3.27
	LTE Band 5	0.26	0.30	0.33	-
	LTE Band 7	0.22	0.39	0.63	-
LTE Band 12	0.19	0.26	0.28	-	
DTS	2.4G WLAN	0.35	0.13	0.33	-

Note : The highest reported SAR for head, body-worn accessory, hotspot and simultaneous transmission exposure conditions are 0.47W/kg, 0.83W/kg, 0.92W/kg and 1.03 W/kg respectively. And The highest reported SAR for product specific 10-g SAR and simultaneous transmission exposure conditions are 3.54W/kg and 3.75 W/kg respectively

Note:

- 1)* For body-worn operation, this device has been tested and meets FCC RF exposure guidelines when used with any accessory that contains no metal and that positions the handset a minimum of 15mm from the body. Use of other accessories may not ensure compliance with FCC RF exposure guidelines.
- 2)**For product specific 10-g SAR operation, this device has been tested and meets the 10-g SAR limits of 4.0 W/kg for general population/ uncontrolled exposure limits according to the ANSI C95.1:1992/IEEE C95.1:1991.
- 3)The device is in compliance with Specific Absorption Rate(SAR)for general population uncontrolled exposure limits according to the FCC rule §2.1093, the ANSI C95.1:1992/IEEE C95.1:1991, the NCRP Report Number 86 for uncontrolled environment, and had been tested in accordance with the measurement methods and procedures specified in IEEE Std 1528-2013 .
- 4) According to TCB workshop October, 2014 RF Exposure Procedures Update (Overlapping LTE Bands): SAR for LTE Band 17 (Frequency range:704-716 MHz) is covered by LTE Band 12 (Frequency range:699-716 MHz) due to similar frequency range, same maximum tune up limit and same channel bandwidth.

3.2 GENERAL DESCRIPTION OF EUT

Equipment	Smart Phone		
Model Name	TRT-L53		
IMEI Code	864013030006637 (Sample 1)		
	864013030006629 (Sample 2)		
	864013030004863 (Sample 3)		
S/N	U2F0117109000464 (Sample 1)		
	U2F0117109000463 (Sample 2)		
	U2F0117109000287 (Sample 3)		
HW Version	HL1TRTM		
SW Version	TRT-L53C900B061		
Modulation	GSM(GMSK/8PSK),UMTS(QPSK),LTE(QPSK/16QAM),WiFi(DSSS/OFDM),BT(GFSK/ π /4-DQPSK/8-DPSK)		
Operation Frequency Range(s)	Band	TX (MHz)	RX (MHz)
	GSM850	824-849	869-894
	GSM1900	1850-1910	1930-1990
	UMTS Band 2	1850-1910	1930-1990
	UMTS Band 4	1710-1755	2110-2155
	UMTS Band 5	824-849	869-894
	LTE Band 2	1850-1910	1930-1990
	LTE Band 4	1710-1755	2110-2155
	LTE Band 5	824-849	869-894
	LTE Band 7	2500-2570	2620-2690
	LTE Band 12	699-716	729-746
	LTE Band 17	704-716	734-746
	Bluetooth	2400 -2483.5	
2.4GWIFI	2400 -2483.5		
GPRS/EDGE Multislot Class(12)	Max Number of Timeslots in Uplink:	4	
	Max Number of Timeslots in Downlink:	4	
	Max Total Timeslot:	5	
GSM Device class	Class B		
HSDPA UE Category	14		
HSUPA UE Category	6		
DC-HSDPA UE Category	24		
Power Class:	4, tested with power level 5(GSM850)		
	1, tested with power level 0(GSM1900)		
	3, tested with power control "all 1"(UMTS Band 2/4/5)		
	3, tested with power control "all Max" (LTE Band 2/4/5/7/12/17)		
Test Channels (low-mid-high):	128-190-251 (GSM850)		
	512-661-810 (GSM1900)		
	9262-9400-9538(UMTS Band 2)		
	1312-1413-1513 (UMTS Band 4)		
	4132-4182-4233 (UMTS Band 5)		
	18700-18900-19100(LTE Band 2 BW=20MHz)		
	20050-20175-20300(LTE Band 4 BW=20MHz)		
	20450-20525-20600(LTE Band 5 BW=10MHz)		
	20850-21100-21350(LTE Band 7 BW=20MHz)		
	23060-23095-23130(LTE Band 12 BW=10MHz)		
	23780-23790-23800(LTE Band 17 BW=10MHz)		
1-6 -11 (2.4G WIFI 802.11b/g/n HT20)			
3-6 - 9 (2.4G WIFI 802.11n HT40)			
Other Information			

Battery	Huawei Technologies Co., Ltd. Battery Model: HB406689ECW Rated capacity: 3900mAh Nominal Voltage: $\text{---} + 3.82\text{V}$ Charging Voltage: $\text{---} + 4.35\text{V}$ 1.SCUD (FUJIAN) Electronics Co., Ltd 2.Shenzhen Desay Battery Tech Co., Ltd. 3. Sunwoda Electronic Co., LTD
With Earphone(Yes/No)	Yes

3.3 HOTSPOT POWER REDUCTION SPECIFICATION FOR SAR

This device uses a single fixed level of power reduction through static table look-up for SAR compliance and it is triggered by a single event or operation. A fixed level power reduction is applied when hotspot mode becomes active. When the hotspot is disabled, the power value will be recovered.

Item	Description
Supporting power reduction or not	Yes
Frequency Band(s) using power reduction	GSM1900,UMTS B2/ B4, LTE Band 2/4/7
Power reduction feature	A fixed power reduction is applied when hotspot mode becomes active. When the hotspot is disabled, the power value will be recovered.
Triggering conditions	Only hotspot mode (wireless routing) and nothing else is used to trigger this power reduction.
Full power and reduced power specifications	See Section 8.1
All simultaneous voice and data transmissions combinations and considerations	See Section 8.3

3.4 SAR SENSOR WORKING

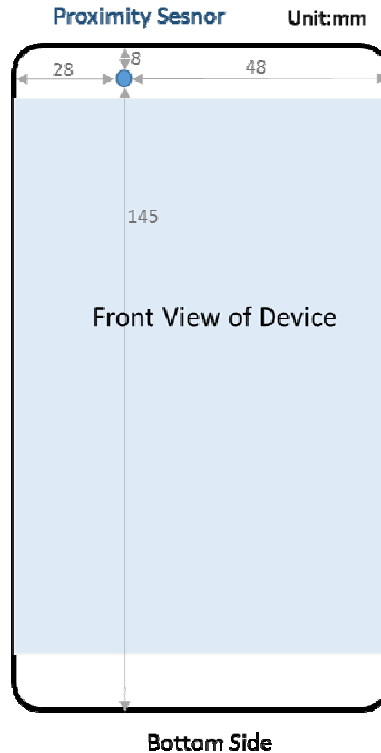


Figure3.4.1: The location of the IR proximity sensor

Antenna and sensor distances (front view, unit: mm)

Sensor	Front side	Back side	Left side	Right side	Top side	Bottom side
Proximity Sensor	0	7	28	48	8	145

The IR proximity sensor locates on the front face of the device and detects objects approaching only from the front side

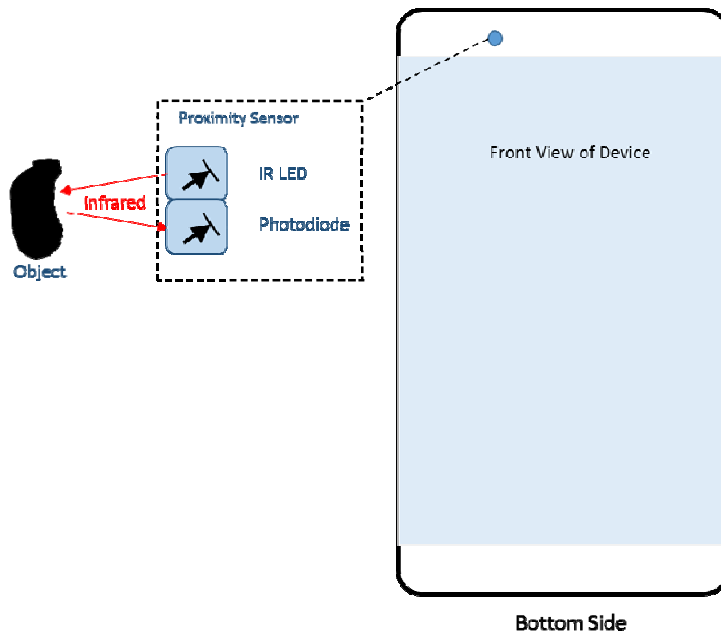


Figure 3.4.2: The picture of the proximity sensor

3.4.1 DESCRIPTION OF PROXIMITY SENSOR TECHNIQUES

As figure 3.4.2 shows, proximity detection is accomplished by photodiode measuring the amount of IR energy, from the internal IR LED, reflected off an object to determine its distance. As the sensor locates on the front side of the device, it only detects the front face approaching, like held-to-ear or body mode.

The device uses proximity sensor to detect the presence of nearby objects without any physical contact. When the device is under voice mode and the sensor finds the objects close enough and meet some other conditions at the same time, it will do the power reduction. When the call is off or sensor is not working on during the call, the power recovers as usual. The proximity sensor or the power reduction cannot be intentionally or unintentionally turned-off by the users.

3.4.2 POWER REDUCTION OPERATION TABLE

The device uses Qualcomm platform, which offers 8 sets SAR back off NVs to meet different complicated SAR scenarios. These NVs control max output of main modem for 2G/3G/4G bands. When certain set NVs works, the processor compare the back off NVs and original ones, and choose the lower output to apply. IR proximity sensor only works in voice mode, like GSM, CDMA 1X, VOLTE, WCDMA, and VOLTE (VOLTE based on the operation of different telecom carriers services and not includes other third party software applications). When head or body is in proximity and is detected by sensor as users take voice services like above, SAR back off will be applied immediately. If Base station requests the higher output power above the limit, the power control algorithm inside modem chip will limit the power up to the preset power limit. If base station requests a lower output power less than the limit, the out power is controlled by base station. More details information followings:

Band	WiFi ant only Power Reduction (dB)	
	WiFi ant + Sensor on	WiFi ant + Sensor off
WiFi 2.4G	4.8	0

Note: When the sensor is malfunctioned, refer to operational description for the further details.

3.5 LABORATORY ENVIRONMENT

Temperature	Min. = 18°C, Max. = 25°C
Relative humidity	Min. = 30%, Max. = 70%
Ground system resistance	< 0.5 Ω
Ambient noise is checked and found very low and in compliance with requirement of standards.	
Reflection of surrounding objects is minimized and in compliance with requirement of standards.	

3.6 MAIN TEST INSTRUMENTS

Item	Equipment	Manufacturer	Model	Serial No.	Cal. Date	Cal. Interval
1	Data Acquisition Electronics	Speag	DAE4	1390	Sep. 22, 2016	1 Year
2	E-field Probe	Speag	EX3DV4	7340	Dec. 27, 2016	1 Year
3	E-field Probe	Speag	EX3DV4	3753	May. 11, 2016	1 Year
4	System Validation Dipole	Speag	D750V3	1095	Sep. 30, 2015	3 Years
5	System Validation Dipole	Speag	D835V2	4d160	Sep. 30, 2015	3 Years
6	System Validation Dipole	Speag	D1750V2	1101	Sep. 22, 2015	3 Years
7	System Validation Dipole	Speag	D1900V2	5d179	Sep. 29, 2015	3 Years
8	System Validation Dipole	Speag	D2450V2	919	Sep. 28, 2015	3 Years
9	System Validation Dipole	Speag	D2600V2	1067	Sep. 28, 2015	3 Years
10	Twin Sam Phantom	Speag	Twin Sam Phantom V5.0	1784	N/A	N/A
11	Twin Sam Phantom	Speag	Twin Sam Phantom V5.0	1896	N/A	N/A
12	8960 Series 10 Wireless Com Test set	Agilent	E5515E	MY52112163	Sep. 04, 2016	1 Year
13	CMW500-Wideband Radio Communication Tester	RS	CMW500	152366	Mar. 27, 2016	1 Year
14	CMW500-Wideband Radio Communication Tester	RS	CMW500	152372	Mar. 27, 2016	1 Year
15	Power Amplifier	Mini-Circuits	ZHL-42W+	QA1333003	N/A	N/A
16	ENA Network Analyzer	Agilent	E5071C	MY46102965	Mar. 27, 2016	1 Year
17	MXG Analog Signal Generator	Agilent	N5181A	MY49060710	Sep. 04, 2016	1 Year
18	P-series power meter	Agilent	N1911A	MY45100473	Sep. 04, 2016	1 Year
19	wideband power sensor	Agilent	N1921A	MY51100041	Sep. 04, 2016	1 Year
20	power Meter	Anritsu	ML2495A	1128009	Mar. 27, 2016	1 Year
21	Pulse Power Sensor	Anritsu	MA 2411B	1027500	Mar. 27, 2016	1 Year
22	Dielectric Assessment Kit	Speag	DAK-3.5	1226	N/A	N/A
23	Dual directional coupler	Woken	TS-PCC0M-05	107090019	Mar. 16, 2016	1 Year

Remark: 1." N/A" denotes no model name, serial No. or calibration specified.

2. 1) Per KDB865664 D01 requirements for dipole calibration, the test laboratory has adopted three-year extended calibration interval. Each measured dipole is expected to evaluate with the following criteria at least on annual interval in Appendix C.

- a) There is no physical damage on the dipole;
- b) System check with specific dipole is within 10% of calibrated value;
- c) The most recent return-loss result , measured at least annually, deviates by no more than 20% from the previous measurement;
- d) The most recent measurement of the real or imaginary parts of the impedance, measured at least annually is within 5Ω from the previous measurement.

2) Network analyzer probe calibration against air, distilled water and a short block performed before measuring liquid parameters.

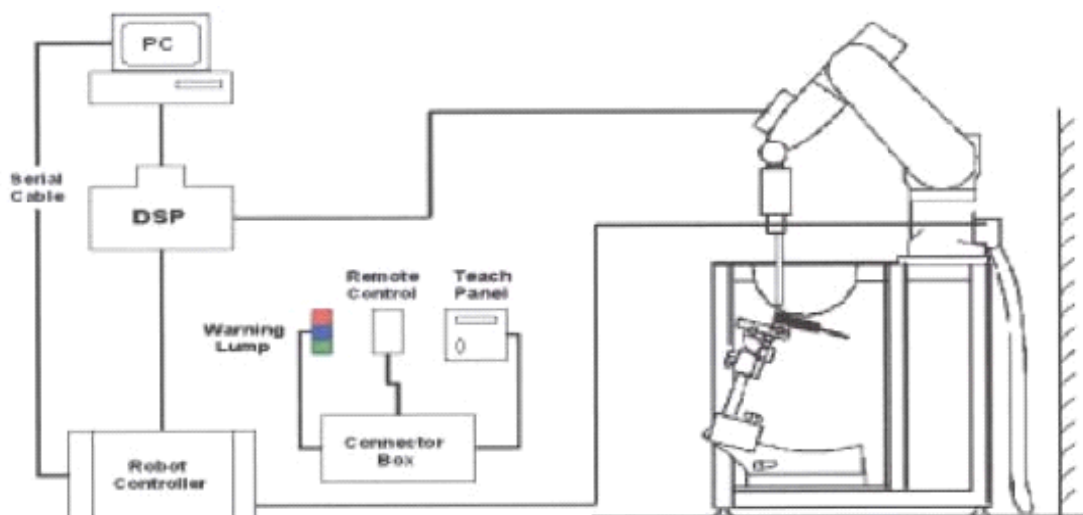
4. SAR MEASUREMENTS SYSTEM CONFIGURATION

4.1 SAR MEASUREMENT SET-UP

The DASY5 system for performing compliance tests consists of the following items:

1. A standard high precision 6-axis robot (Stäubli RX family) with controller and software. An arm extension for accommodating the data acquisition electronics (DAE).
2. A dosimetric probe, i.e. an isotropic E-field probe optimized and calibrated for usage in tissue simulating liquid. The probe is equipped with an optical surface detector system.
3. A data acquisition electronic (DAE) which performs the signal amplification, signal multiplexing, AD-conversion, offset measurements, mechanical surface detection, collision detection, etc. The unit is battery powered with standard or rechargeable batteries. The signal is optically transmitted to the EOC.
4. A unit to operate the optical surface detector which is connected to the EOC.
5. The Electro-Optical Coupler (EOC) performs the conversion from the optical into a digital electric signal of the DAE. The EOC is connected to the DASY5 measurement server.
6. The DASY5 measurement server, which performs all real-time data evaluation for field measurements and surface detection, controls robot movements and handles safety operation. A computer operating Windows 7
7. DASY5 software and SEMCAD data evaluation software.
8. Remote control with teach panel and additional circuitry for robot safety such as warning lamps, etc.
9. The generic twin phantom enabling the testing of left-hand and right-hand usage.
10. The device holder for handheld mobile phones.
11. Tissue simulating liquid mixed according to the given recipes.
12. System validation dipoles allowing to validate the proper functioning of the system.

4.1.1 Test Setup Layout

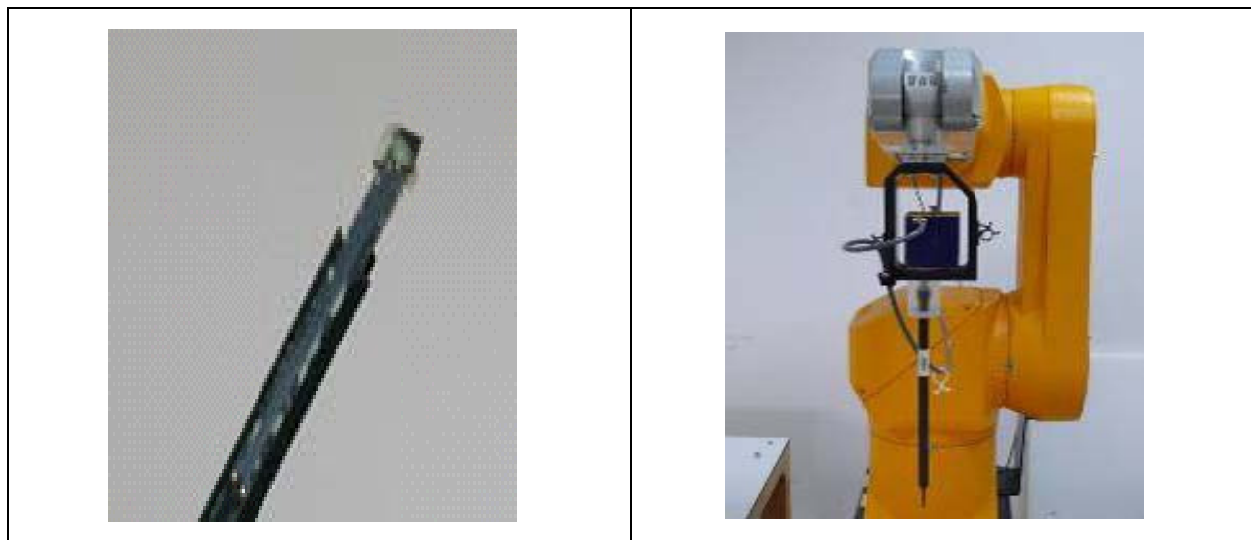


4.2 DASY5E-FIELDPROBESYSTEM

The SAR measurements were conducted with the dosimetric probe EX3DV4(manufactured by SPEAG), designed in the classical triangular configuration and optimized for dosimetric evaluation.

4.2.1EX3DV4 PROBE SPECIFICATION

Construction	Symmetrical design with triangular core Interleaved sensors Built-in shielding against static charges PEEK enclosure material (resistant to organic solvents, e.g., DGBE)
Calibration	ISO/IEC 17025 calibration service available
Frequency	10 MHz to 6 GHz Linearity: ± 0.2 dB (30 MHz to 6 GHz)
Directivity	± 0.3 dB in HSL (rotation around probe axis) ± 0.5 dB in tissue material (rotation normal to probe axis)
Dynamic Range	10 μ W/g to > 100 mW/g Linearity: ± 0.2 dB
Dimensions	Overall length: 330 mm (Tip: 20 mm) Tip diameter: 2.5 mm (Body: 12 mm) Distance from probe tip to dipole centers: 1.0 mm



EX3DV4 E-field Probe

4.2.2E-FIELD PROBE CALIBRATION

Each probe is calibrated according to a dosimetric assessment procedure with accuracy better than $\pm 10\%$. The spherical isotropy was evaluated and found to be better than $\pm 0.25\text{dB}$. The sensitivity parameters (NormX, NormY, NormZ), the diode compression parameter (DCP) and the conversion factor (ConvF) of the probe are tested.

The free space E-field from amplified probe outputs is determined in a test chamber. This is performed in a TEM cell for frequencies below 1 GHz, and in a wave guide above 1 GHz for free space. For the free space calibration, the probe is placed in the volumetric center of the cavity and at the proper orientation with the field. The probe is then rotated 360 degrees.

E-field temperature correlation calibration is performed in a flat phantom filled with the appropriate simulated brain tissue. The measured free space E-field in the medium correlates to temperature rise in a dielectric medium. For temperature correlation calibration a RF transparent thermistor-based temperature probe is used in conjunction with the E-field probe.

$$\text{SAR} = C \frac{\Delta T}{\Delta t}$$

Where: Δt = Exposure time (30 seconds),

C = Heat capacity of tissue (brain or muscle),

ΔT = Temperature increase due to RF exposure.

Or
$$\text{SAR} = \frac{|E|^2 \sigma}{\rho}$$

Where: σ = Simulated tissue conductivity,

ρ = Tissue density (kg/m^3).


4.2.3 OTHER TEST EQUIPMENT


4.2.3.1. Device Holder for Transmitters

Construction: Simple but effective and easy-to-use extension for Mounting Device that facilitates the testing of larger devices (e.g., laptops, cameras, etc.) It is light weight and fits easily on the upper part of the Mounting Device in place of the phone positioner. The extension is fully compatible with the Twin SAM, ELI4 and SAM v6.0 Phantoms.

Material: POM, Acrylic glass, Foam

4.2.3.2 Phantom

Model	ELI4 Phantom	
Construction	Phantom for compliance testing of handheld and body-mounted wireless devices in the frequency range of 30 MHz to 6 GHz. ELI is fully compatible with the IEC 62209-2 standard and all known tissue simulating liquids. ELI has been optimized regarding its performance and can be integrated into our standard phantom tables. A cover prevents evaporation of the liquid. Reference markings on the phantom allow installation of the complete setup, including all predefined phantom positions and measurement grids, by teaching three points. The phantom is compatible with all SPEAG dosimetric probes and dipoles.	
Shell Thickness	2±0.1 mm	
Filling Volume	Approx. 30 liters	
Dimensions	Length: 600 mm ; Width: 190mm Height: adjustable feet	
Available	Special	

Model	Twin SAM	
Construction	The shell corresponds to the specifications of the Specific Anthropomorphic Mannequin (SAM) phantom defined in IEEE 1528 and IEC 62209-1. It enables the dosimetric evaluation of left and right hand phone usage as well as body mounted usage at the flat phantom region. A cover prevents evaporation of the liquid. Reference markings on the phantom allow the complete setup of all predefined phantom positions and measurement grids by teaching three points with the robot.	
Shell Thickness	2 ± 0.2 mm	
Filling Volume	Approx. 25 liters	
Dimensions	Length: 1000mm; Width: 500mm Height: adjustable feet	
Available	Special	

4.2.4 SCANNING PROCEDURE

The DASY5 installation includes predefined files with recommended procedures for measurements and validation. They are read-only document files and destined as fully defined but unmeasured masks. All test positions (head or body-worn) are tested with the same configuration of test steps differing only in the grid definition for the different test positions.

The “reference” and “drift” measurements are located at the beginning and end of the batch process. They measure the field drift at one single point in the liquid over the complete procedure. The indicated drift is mainly the variation of the DUT’s output power and should vary max. $\pm 5\%$.

The “surface check” measurement tests the optical surface detection system of the DASY5 system by repeatedly detecting the surface with the optical and mechanical surface detector and comparing the results. The output gives the detecting heights of both systems, the difference between the two systems and the standard deviation of the detection repeatability. Air bubbles or refraction in the liquid due to separation of the sugar-water mixture gives poor repeatability (above $\pm 0.1\text{mm}$). To prevent wrong results tests are only executed when the liquid is free of air bubbles. The difference between the optical surface detection and the actual surface depends on the probe and is specified with each probe. (It does not depend on the surface reflectivity or the probe angle to the surface within $\pm 30^\circ$.)

- Area Scan

The “area scan” measures the SAR above the DUT or verification dipole on a parallel plane to the surface. It is used to locate the approximate location of the peak SAR with 2D spline interpolation. The robot performs a stepped movement along one grid axis while the local electrical field strength is measured by the probe. The probe is touching the surface of the SAM during acquisition of measurement values. The standard scan uses large grid spacing for faster measurement. Standard grid spacing for head measurements is 15 mm in x- and y- dimension ($\leq 2\text{GHz}$), 12 mm in x- and y- dimension (2-4 GHz) and 10mm in x- and y- dimension (4-6GHz). If a finer resolution is needed, the grid spacing can be reduced. Grid spacing and orientation have no influence on the SAR result. For special applications where the standard scan method does not find the peak SAR within the grid, e.g. mobile phones with flip cover, the grid can be adapted in orientation.

- Zoom Scan

A “zoom scan” measures the field in a volume around the 2D peak SAR value acquired in the previous “coarse” scan. This is a fine grid with maximum scan spatial resolution: $\Delta x_{\text{zoom}}, \Delta y_{\text{zoom}} \leq 2\text{GHz} - \leq 8\text{mm}$, 2-4GHz - $\leq 5\text{mm}$ and 4-6 GHz - $\leq 4\text{mm}$; $\Delta z_{\text{zoom}} \leq 3\text{GHz} - \leq 5\text{mm}$, 3-4 GHz - $\leq 4\text{mm}$ and 4-6GHz - $\leq 2\text{mm}$ where the robot additionally moves the probe along the z-axis away from the bottom of the Phantom. DASY is also able to perform repeated zoom scans if more than 1 peak is found during area scan. In this document, the evaluated peak 1g and 10g averaged SAR values are shown in the 2D-graphics in Appendix B. Test results relevant for the specified standard (see chapter 1.4.) are shown in table form in chapter 7.2.

A Z-axis scan measures the total SAR value at the x- and y-position of the maximum SAR value found during the cube scan. The probe is moved away in z-direction from the bottom of the SAM phantom in 2 mm steps. This measurement shows the continuity of the liquid and can - depending in the field strength – also show the liquid depth.

The following table summarizes the area scan and zoom scan resolutions per FCC KDB 865664D01:

Frequency	Maximum Area Scan resolution ($\Delta x_{area}, \Delta y_{area}$)	Maximum Zoom Scan spatial resolution ($\Delta x_{zoom}, \Delta y_{zoom}$)	Maximum Zoom Scan spatial resolution			Minimum zoom scan volume (x,y,z)
			Uniform Grid	Graded Grad		
			$\Delta z_{zoom}(n)$	$\Delta z_{zoom}(1)^*$	$\Delta z_{zoom}(n>1)^*$	
≤2GHz	≤15mm	≤8mm	≤5mm	≤4mm	≤1.5* $\Delta z_{zoom}(n-1)$	≥30mm
2-3GHz	≤12mm	≤5mm	≤5mm	≤4mm	≤1.5* $\Delta z_{zoom}(n-1)$	≥30mm
3-4GHz	≤12mm	≤5mm	≤4mm	≤3mm	≤1.5* $\Delta z_{zoom}(n-1)$	≥28mm
4-5GHz	≤10mm	≤4mm	≤3mm	≤2.5mm	≤1.5* $\Delta z_{zoom}(n-1)$	≥25mm
5-6GHz	≤10mm	≤4mm	≤2mm	≤2mm	≤1.5* $\Delta z_{zoom}(n-1)$	≥22mm

4.2.5 SPATIAL PEAK SAR EVALUATION

The spatial peak SAR - value for 1 and 10 g is evaluated after the Cube measurements have been done. The basis of the evaluation are the SAR values measured at the points of the fine cube grid consisting of 5 x 5 x 7 points(with 8mm horizontal resolution) or 7 x 7 x 7 points(with 5mm horizontal resolution) or 8 x 8 x 7 points(with 4mm horizontal resolution). The algorithm that finds the maximal averaged volume is separated into three different stages.

- The data between the dipole center of the probe and the surface of the phantom are extrapolated. This data cannot be measured since the center of the dipole is 2.7 mm away from the tip of the probe and the distance between the surface and the lowest measuring point is about 1 mm (see probe calibration sheet). The extrapolated data from a cube measurement can be visualized by selecting “Graph Evaluated”.
- The maximum interpolated value is searched with a straight-forward algorithm. Around this maximum the SAR - values averaged over the spatial volumes (1g or 10 g) are computed using the 3d-spline interpolation algorithm. If the volume cannot be evaluated (i.e., if a part of the grid was cut off by the boundary of the measurement area) the evaluation will be started on the corners of the bottom plane of the cube.
- All neighboring volumes are evaluated until no neighboring volume with a higher average value is found.

Extrapolation

The extrapolation is based on a least square algorithm [W. Gander, Computermathematik, p.168-180]. Through the points in the first 3 cm along the z-axis, polynomials of order four are calculated. These polynomials are then used to evaluate the points between the surface and the probe tip. The points, calculated from the surface, have a distance of 1 mm from each other.

Interpolation

The interpolation of the points is done with a 3d-Spline. The 3d-Spline is composed of three one-dimensional splines with the "Not a knot"-condition [W. Gander, Computermathematik, p.141-150] (x, y and z -direction) [Numerical Recipes in C, Second Edition, p.123ff].

Volume Averaging

At First the size of the cube is calculated. Then the volume is integrated with the trapezoidal algorithm. 8000 points (20x20x20) are interpolated to calculate the average.

Advanced Extrapolation

DASY5 uses the advanced extrapolation option which is able to compensate boundary effects on E-field probes.

4.2.6 DATA STORAGE AND EVALUATION

4.2.5.1 Data Storage

The DASY5 software stores the acquired data from the data acquisition electronics as raw data (in microvolt readings from the probe sensors), together with all necessary software parameters for the data evaluation (probe calibration data, liquid parameters and device frequency and modulation data) in measurement files with the extension “.DAE4”. The software evaluates the desired unit and format for output each time the data is visualized or exported. This allows verification of the complete software setup even after the measurement and allows correction of incorrect parameter settings. For example, if a measurement has been performed with a wrong crest factor parameter in the device setup, the parameter can be corrected afterwards and the data can be re-evaluated.

The measured data can be visualized or exported in different units or formats, depending on the selected probe type ([V/m], [A/m], [°C], [mW/g], [mW/cm²], [dBrel], etc.). Some of these units are not available in certain situations or show meaningless results, e.g., a SAR output in a lossless media will always be zero. Raw data can also be exported to perform the evaluation with other software packages.

4.2.7 Data Evaluation by SEMCAD

The SEMCAD software automatically executes the following procedures to calculate the field units from the microvolt readings at the probe connector. The parameters used in the evaluation are stored in the configuration modules of the software:

Probe parameters:	Sensitivity	Normi, a _{i0} , a _{i1} , a _{i2}
	Conversion factor	ConvF _i
	Diode compression point	Dcp _i
Device parameters:	Frequency	f
	Crest factor	cf
Media parameters:	Conductivity	
	Density	

These parameters must be set correctly in the software. They can be found in the component documents or they can be imported into the software from the configuration files issued for the DASY5 components. In the direct measuring mode of the multi meter option, the parameters of the actual system setup are used. In the scan visualization and export modes, the parameters stored in the corresponding document files are used.

The first step of the evaluation is a linearization of the filtered input signal to account for the compression characteristics of the detector diode. The compensation depends on the input signal, the diode type and the DC-transmission factor from the diode to the evaluation electronics.

If the exciting field is pulsed, the crest factor of the signal must be known to correctly compensate for peak power. The formula for each channel can be given as:

$$V_i = U_i + U_i^2 \cdot cf / dcp_i$$

With	V _i = compensated signal of channel i	(i = x, y, z)
	U _i = input signal of channel i	(i = x, y, z)
	cf = crest factor of exciting field	(DASY parameter)
	dcp _i = diode compression point	(DASY parameter)

From the compensated input signals the primary field data for each channel can be evaluated:

$$\text{E-field probes: } E_i = (V_i / \text{Norm}_i \cdot \text{ConvF})^{1/2}$$

$$\text{H-field probes: } H_i = (V_i)^{1/2} \cdot (a_{i0} + a_{i1} f + a_{i2} f^2) / f$$

With V_i = compensated signal of channel i (i = x, y, z)

Norm_i = sensor sensitivity of channel i (i = x, y, z)
[mV/(V/m)²] for E-field Probes

ConvF = sensitivity enhancement in solution

a_{ij} = sensor sensitivity factors for H-field probes

f = carrier frequency [GHz]

E_i = electric field strength of channel i in V/m

H_i = magnetic field strength of channel i in A/m

The RSS value of the field components gives the total field strength (Hermitian magnitude):

$$E_{\text{tot}} = (E_x^2 + E_y^2 + E_z^2)^{1/2}$$

The primary field data are used to calculate the derived field units.

$$\text{SAR} = (E_{\text{tot}})^2 \cdot \sigma / (\rho \cdot 1000)$$

With SAR = local specific absorption rate in mW/g

E_{tot} = total field strength in V/m
= conductivity in [mho/m] or [Siemens/m]
= equivalent tissue density in g/cm³

Note that the density is normally set to 1 (or 1.06), to account for actual brain density rather than the density of the simulation liquid. The power flow density is calculated assuming the excitation field to be a free space field.

$$P_{\text{pwe}} = E_{\text{tot}}^2 / 3770 \text{ or } P_{\text{pwe}} = H_{\text{tot}}^2 \cdot 37.7$$

With P_{pwe} = equivalent power density of a plane wave in mW/cm²

E_{tot} = total field strength in V/m

H_{tot} = total magnetic field strength in A/m

5. SYSTEM VERIFICATION PROCEDURE

5.1 TISSUE VERIFICATION

The simulating liquids should be checked at the beginning of a series of SAR measurements to determine of the dielectric parameter are within the tolerances of the specified target values. The measured conductivity and relative permittivity should be within $\pm 5\%$ of the target values.

The following materials are used for producing the tissue-equivalent materials.

Tissue Type	Bactericide	DGBE	HEC	NaCl	Sucrose	Triton X-100	Water	Diethylene Glycol Mono-hexylether
Head 750	0.2	-	0.2	1.5	56.0	-	42.1	-
Head 835	0.2	-	0.2	1.5	57.0	-	41.1	-
Head 1750	-	47.0	-	0.4	-	-	52.6	-
Head 1900	-	44.5	-	0.2	-	-	55.3	-
Head 2450	-	45.0	-	0.1	-	-	54.9	-
Head 2600	-	45.1	-	0.1	-	-	54.8	-

Tissue Type	Bactericide	DGBE	HEC	NaCl	Sucrose	Triton X-100	Water	Diethylene Glycol Mono-hexylether
Body 750	0.2	-	0.2	0.8	48.8	-	50.0	-
Body 835	0.2	-	0.2	0.9	48.5	-	50.2	-
Body 1750	-	31.0	-	0.2	-	-	68.8	-
Body 1900	-	29.5	-	0.3	-	-	70.2	-
Body 2450	-	31.4	-	0.1	-	-	68.5	-
Body 2600	-	31.8	-	0.1	-	-	68.1	-

Salt: 99+% Pure Sodium Chloride; Sugar: 98+% Pure Sucrose; Water: De-ionized, 16M + resistivity
 HEC: Hydroxyethyl Cellulose; DGBE: 99+% Di(ethylene glycol) butyl ether,[2-(2-butoxyethoxy)ethanol]
 Triton X-100(ultra pure): Polyethylene glycol mono [4-(1,1,3,3-tetramethylbutyl)phenyl]ether

Tissue Verification									
Tissue Type	Frequency (MHz)	Liquid Temp. (°C)	Conductivity (σ)	Permittivity (εr)	Targeted Conductivity (σ)	Targeted Permittivity (εr)	Deviation Conductivity (σ) (%)	Deviation Permittivity (εr) (%)	Date
Head	750	22.5	0.888	41.120	0.89	41.9	-0.22	-1.86	Mar. 05, 2017
Head	835	22.4	0.936	41.750	0.90	41.5	4.00	0.60	Mar. 06, 2017
Head	1750	22.4	1.379	41.490	1.37	40.1	0.66	3.47	Mar. 06, 2017
Head	1900	22.5	1.398	40.570	1.40	40.0	-0.14	1.43	Mar. 05, 2017
Head	2450	22.4	1.874	38.860	1.80	39.2	4.11	-0.87	Mar. 06, 2017
Head	2600	22.5	2.039	38.640	1.96	39.0	4.03	-0.92	Mar. 05, 2017
Body	750	22.2	0.966	56.290	0.96	55.5	0.63	1.42	Mar. 03, 2017
Body	835	22.1	0.967	54.330	0.97	55.2	-0.31	-1.58	Mar. 02, 2017
Body	1750	22.6	1.506	52.260	1.49	53.4	1.07	-2.13	Feb. 28, 2017
Body	1900	22.3	1.524	52.620	1.52	53.3	0.26	-1.28	Mar. 01, 2017
Body	2450	22.1	2.018	51.320	1.95	52.7	3.49	-2.62	Mar. 04, 2017
Body	2600	22.1	2.223	52.690	2.16	52.5	2.92	0.36	Mar. 02, 2017

Note:

- 1)The dielectric parameters of the tissue-equivalent liquid should be measured under similar ambient conditions and within 2 °C of the conditions expected during the SAR evaluation to satisfy protocol requirements.
- 2)KDB 865664 was ensured to be applied for probe calibration frequencies greater than or equal to 50MHz of the EUT frequencies.
- 3)The above measured tissue parameters were used in the DASY software to perform interpolation via the DASY software to determine actual dielectric parameters at the test frequencies. The SAR test plots may slightly differ from the table above since the DASY rounds to three significant digits.

5.2 SYSTEM CHECK

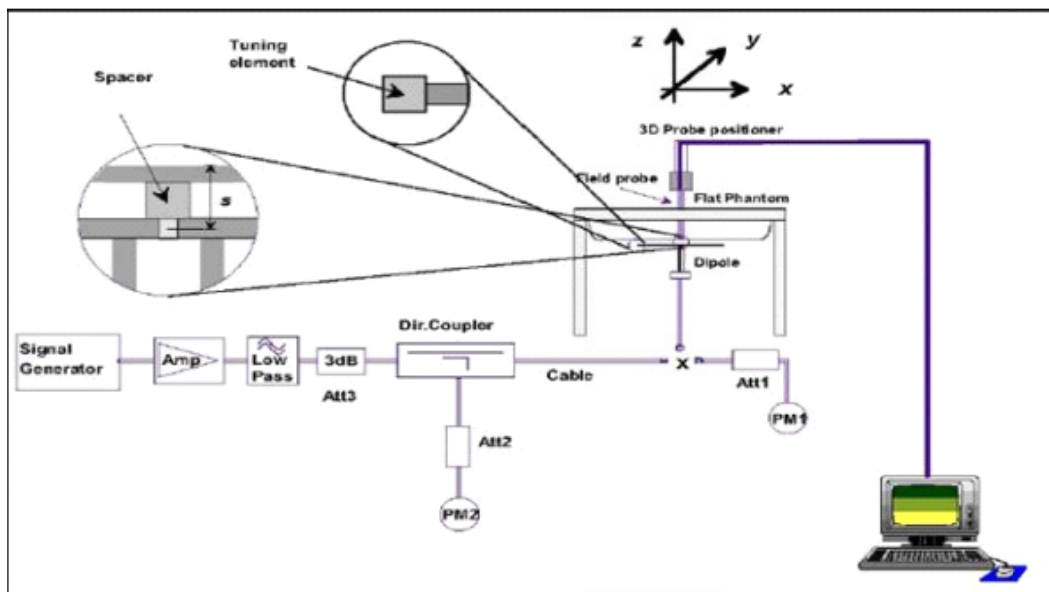
The system check is performed for verifying the accuracy of the complete measurement system and performance of the software. The system check is performed with tissue equivalent material according to IEEE P1528 (described above). The following table shows system check results for all frequency bands and tissue liquids used during the tests.

System Check	Date	Frequency (MHz)	Targeted SAR-1g (W/kg)	Measured SAR-1g (W/kg)	normalized SAR-1g (W/kg)	Deviation (%)	Dipole S/N
Head	Mar. 05, 2017	750	8.27	1.97	7.88	-4.72	1095
Head	Mar. 06, 2017	835	9.50	2.49	9.96	4.84	4d160
Head	Mar. 06, 2017	1750	36.60	8.73	34.92	-4.59	1101
Head	Mar. 05, 2017	1900	39.70	9.69	38.76	-2.37	5d179
Head	Mar. 06, 2017	2450	52.00	12.70	50.80	-2.31	919
Head	Mar. 05, 2017	2600	56.80	13.90	55.60	-2.11	1067
Body	Mar. 03, 2017	750	8.65	2.07	8.28	-4.28	1095
Body	Mar. 02, 2017	835	9.52	2.36	9.44	-0.84	4d160
Body	Feb. 28, 2017	1750	35.70	8.57	34.28	-3.98	1101
Body	Mar. 01, 2017	1900	39.60	10.10	40.40	2.02	5d179
Body	Mar. 04, 2017	2450	51.10	12.50	50.00	-2.15	919
Body	Mar. 02, 2017	2600	54.10	12.70	50.80	-6.10	1067

5.3 SYSTEM CHECK PROCEDURE

The system check is performed by using a system check dipole which is positioned parallel to the planar part of the SAM phantom at the reference point. The distance of the dipole to the SAM phantom is determined by a plexiglass spacer. The dipole is connected to the signal source consisting of signal generator and amplifier via a directional coupler, N-connector cable and adaption to SMA. It is fed with a power of 250 mW (below 5GHz) or 100mW (above 5GHz). To adjust this power a power meter is used. The power sensor is connected to the cable before the system check to measure the power at this point and do adjustments at the signal generator. At the outputs of the directional coupler both return loss as well as forward power are controlled during the system check to make sure that emitted power at the dipole is kept constant. This can also be checked by the power drift measurement after the test.

System check results have to be equal or near the values determined during dipole calibration (target SAR in table above) with the relevant liquids and test system ($\pm 10\%$).



6.SAR MEASUREMENT VARIABILITY AND UNCERTAINTY

6.1 SAR MEASUREMENT VARIABILITY

Per KDB865664 D01 SAR measurement 100 MHz to 6 GHz, SAR measurement variability must be assessed for each frequency band, which is determined by the SAR probe calibration point and tissue-equivalent medium used for the device measurements. The additional measurements are repeated after the completion of all measurements requiring the same head or body tissue-equivalent medium in a frequency band. The test device should be returned to ambient conditions (normal room temperature) with the battery fully charged before it is re-mounted on the device holder for the repeated measurement(s) to minimize any unexpected variations in the repeated results.

- 1) Repeated measurement is not required when the original highest measured SAR is < 0.80 W/kg; steps 2) through 4) do not apply.
- 2) When the original highest measured SAR is ≥ 0.80 W/kg, repeat that measurement once.
- 3) Perform a second repeated measurement only if the ratio of largest to smallest SAR for the original and first repeated measurements is > 1.20 or when the original or repeated measurement is ≥ 1.45 W/kg (~ 10% from the 1-g SAR limit).
- 4) Perform a third repeated measurement only if the original, first or second repeated measurement is ≥ 1.5 W/kg and the ratio of largest to smallest SAR for the original, first and second repeated measurements is > 1.20 .

The same procedures should be adapted for measurements according to extremity and occupational exposure limits by applying a factor of 2.5 for extremity exposure and a factor of 5 for occupational exposure to the corresponding SAR thresholds.

The detailed repeated measurement results are shown in Section 8.2.

7. OPERATIONAL CONDITIONS DURING TEST

7.1 SAR TEST CONFIGURATION

7.1.1 GSM TEST CONFIGURATION

SAR tests for GSM850 and GSM1900, a communication link is set up with a base station by air link. Using 8960 Series the power lever is set to “5”and “0” in SAR of GSM850 and GSM1900. The tests in the band of GSM850 and GSM1900 are performed in the mode of GPRS/EGPRS function. Since the GPRS class is 12 for this EUT, it has at most 4 timeslots in uplink and at most 4 timeslots in downlink, the maximum total timeslot is 5. The EGPRS class is 12 for this EUT, it has at most 4 timeslots in uplink, and at most 4 timeslots in downlink, the maximum total timeslot is 5.

When SAR tests for EGPRS mode is necessary, GMSK modulation should be used to minimize SAR measurement error due to higher peak-to-average power (PAR) ratios inherent in 8PSK.

According to specification 3GPP TS 51.010, the maximum power of the GSM can do the power reduction for the multi-slot.

The allowed power reduction in the multi-slot configuration is as following:

Number of timeslots in uplink assignment		Reduction of maximum output power (dB)		
Band	Time Slots	GPRS (GMSK)	EGPRS (GMSK)	EGPRS (8PSK)
GSM850	1 TX slot	0	0	0
	2 TX slots	3	3	2
	3 TX slots	5	5	4
	4 TX slots	6	6	5
GSM1900 (Hotspot disabled)	1 TX slot	0	0	0
	2 TX slots	1.5	1.5	1.5
	3 TX slots	3.5	3.5	3.5
	4 TX slots	5.5	5.5	4.5
GSM1900 (Hotspot activated)	1 TX slot	0	0	0
	2 TX slots	3	3	2.5
	3 TX slots	4	4	4
	4 TX slots	5.5	5.5	5.5

7.1.2 UMTS TEST CONFIGURATION

1. Output Power Verification

Maximum output power is verified on the High, Middle and Low channels according to the procedures description in section 5.2 of 3GPP TS 34.121, using the appropriate RMC or AMR with TPC (transmit power control) set to all “1s” for WCDMA/HSDPA or by applying the required inner loop power control procedures to maintain maximum output power while HSUPA is active. Result for all applicable physical channel configurations (DPCCH, DPDCHn and spreading codes, HSDPA, HSPA) Should be tabulated in the SAR report. All configuration that are not supported by the DUT or cannot be measured due to technical or equipment limitation should be clearly identified.

2. WCDMA

(1). Head SAR Measurements

SAR for next to ear head exposure is measured using a 12.2 kbps RMC with TPC bits configured to all “1s”. The 3G SAR test reduction procedure is applied to AMR configurations with 12.2 kbps RMC as the primary mode. Otherwise, SAR is measured for 12.2 kbps AMR with 3.4 kbps SRB (signaling radio bearer) using the highest reported SAR configuration in 12.2 kbps RMC for head exposure.

(2). Body SAR Measurements

SAR for body-worn accessory is measured using the 12.2 kbps RMC with the TPC bits configured to all “1s”. The 3G SAR test reduction procedure is applied to other spreading codes and multiple DPDCHn configurations supported by handset with 12.2 kbps RMC as the primary mode.

3. HSDPA

SAR for body exposure configurations is measured according to the “Body SAR Measurements” procedures of 3G device. When the maximum output power and tune-up tolerance specified for production units in a secondary mode is ≤ 3 dB higher than the primary mode or when the highest reported SAR of the primary mode is scaled by the ratio of specified maximum output power and tune-up tolerance of secondary to primary mode and the adjusted SAR is ≤ 1.2 W/kg, SAR measurement is not required for the secondary mode. This is referred to as the 3G SAR test reduction procedure in the following SAR test guidance, where the primary mode is identified in the applicable wireless mode test procedures and the secondary mode is wireless mode being considered for SAR test reduction by that procedure. When the 3G SAR test reduction procedure is not satisfied, it is identified as “otherwise” in the applicable procedures; SAR measurement is required for the secondary mode.

Per KDB941225 D01, the 3G SAR test reduction procedure is applied to HSDPA body configurations with 12.2 kbps RMC as the primary mode. Otherwise, SAR is measured for HSDPA using the HSDPA body SAR procedures for the highest reported SAR body exposure configuration in 12.2 kbps RMC.

HSDPA should be configured according to UE category of a test device. The number of HS-DSCH/HS-PDSCHs, HAPRQ processes, minimum inter-TTI interval, transport block sizes and RV coding sequence are defined by the H-set. To maintain a consistent test configuration and stable transmission condition, QPSK is used in the H-set for SAR testing. HS-DPCCH should be configured with a CQI feedback cycle of 4ms with a CQI repetition factor of 2 to maintain a constant rate of active CQI slots. The β_c and β_d gain factors for DPCCH and DPDCH were set according to the values in the below table, β_{hs} for HS-DPCCH is set automatically to the correct value when $\Delta ACK, \Delta NACK, \Delta CQI = 8$. The variation of the β_c / β_d ratio causes a power reduction at sub-tests 2 - 4.

Sub-test ^o	β_c ^o	β_d ^o	β_d (SF) ^o	β_c / β_d ^o	β_{hs} (1) ^o	CM(dB)(2) ^o	MPR (dB) ^o
1 ^o	2/15 ^o	15/15 ^o	64 ^o	2/15 ^o	4/15 ^o	0.0 ^o	0 ^o
2 ^o	12/15(3) ^o	15/15(3) ^o	64 ^o	12/15(3) ^o	24/15 ^o	1.0 ^o	0 ^o
3 ^o	15/15 ^o	8/15 ^o	64 ^o	15/8 ^o	30/15 ^o	1.5 ^o	0.5 ^o
4 ^o	15/15 ^o	4/15 ^o	64 ^o	15/4 ^o	30/15 ^o	1.5 ^o	0.5 ^o

Note 1: $\Delta ACK, \Delta NACK$ and $\Delta CQI = 8$ $A_{hs} = \beta_{hs} / \beta_c = 30/15$ $\beta_{hs} = 30/15 * \beta_c$

Note 2: CM=1 for $\beta_c / \beta_d = 12/15, \beta_{hs} / \beta_c = 24/15$. For all other combinations of DPDCH, DPCCH and HS-DPCCH the MPR is based on the relative CM difference. This is applicable for only UEs that support HSDPA in release 6 and later releases.^o

Note 3: For subtest 2 the β_c / β_d ratio of 12/15 for the TFC during the measurement period (TF1, TF0) is achieved by setting the signalled gain factors for the reference TFC (TF1, TF1) to $\beta_c = 11/15$ and $\beta_d = 15/15$ ^o

The measurements were performed with a Fixed Reference Channel (FRC) and H-Set 1 QPSK.

Settings of required H-Set 1 QPSK acc. to 3GPP 34.121

Parameter	Value
Nominal average inf. bit rate	534 kbit/s
Inter-TTI Distance	3 TTI"s
Number of HARQ Processes	2 Processes
Information Bit Payload	3202 Bits
MAC-d PDU size	336 Bits
Number Code Blocks	1 Block
Binary Channel Bits Per TTI	4800 Bits
Total Available SMLs in UE	19200 SMLs
Number of SMLs per HARQ Process	9600 SMLs
Coding Rate	0.67
Number of Physical Channel Codes	5

HSDPA UE category

HS-DSCH Category	Maximum HS-DSCH Codes Received	Minimum Inter-TTI Interval	Maximum HS-DSCH Transport Block Bits/HS-DSCH TTI	Total Soft Channel Bits
1	5	3	7298	19200
2	5	3	7298	28800
3	5	2	7298	28800
4	5	2	7298	38400
5	5	1	7298	57600
6	5	1	7298	67200
7	10	1	14411	115200
8	10	1	14411	134400
9	15	1	25251	172800
10	15	1	27952	172800
11	5	2	3630	14400
12	5	1	3630	28800
13	15	1	34800	259200
14	15	1	42196	259200
15	15	1	23370	345600
16	15	1	27952	345600

4. HSUPA

SAR for Body exposure configurations is measured according to the “Body SAR Measurements” procedures of 3G device. When the maximum output power and tune-up tolerance specified for production units in a secondary mode is $\leq \frac{1}{4}$ dB higher than the primary mode or when the highest reported SAR of the primary mode is scaled by the ratio of specified maximum output power and tune-up tolerance of secondary to primary mode and the adjusted SAR is $\leq 1.2W/kg$, SAR measurement is not required for the secondary mode.

Per KDB941225 D01, the 3G SAR test reduction procedures is applied to HSPA (HSUPA/HSDPA with RMC) body configurations with 12.2 kbps RMC as the primary mode. Otherwise, SAR is measured for HSPA using the HSPA body SAR procedures for the highest reported body exposure SAR configuration in 12.2 kbps RMC.

Due to inner loop power control requirements in HSUPA, a commercial communication test set should be used for the output power and SAR tests. The 12.2 kbps RMC, FRC H-set 1 and E-DCH configurations for HSDPA should be configured according to the values indicated below as well as other applicable procedures described in the “WCDMA Handset” and „Release 5 HSDPA Data Device” sections of 3G device.

Subtests for WCDMA Release 6 HSUPA

Sub-test [Ⓛ]	β_c [Ⓛ]	β_d [Ⓛ]	β_d (SF) [Ⓛ]	β_c/β_d [Ⓛ]	β_{hs} ^{(1)Ⓛ}	β_{ec} [Ⓛ]	β_{ed} [Ⓛ]	β_{ec} (SF) [Ⓛ]	β_{ed} (code) [Ⓛ]	CM ^{(2)Ⓛ} (dB) [Ⓛ]	MP R [Ⓛ] (dB) [Ⓛ]	AG ^{(4)Ⓛ} Index [Ⓛ]	E-TFC I [Ⓛ]
1 [Ⓛ]	11/15 ^{(3)Ⓛ}	15/15 ^{(3)Ⓛ}	64 [Ⓛ]	11/15 ^{(3)Ⓛ}	22/15 [Ⓛ]	209/225 [Ⓛ]	1039/225 [Ⓛ]	4 [Ⓛ]	1 [Ⓛ]	1.0 [Ⓛ]	0.0 [Ⓛ]	20 [Ⓛ]	75 [Ⓛ]
2 [Ⓛ]	6/15 [Ⓛ]	15/15 [Ⓛ]	64 [Ⓛ]	6/15 [Ⓛ]	12/15 [Ⓛ]	12/15 [Ⓛ]	94/75 [Ⓛ]	4 [Ⓛ]	1 [Ⓛ]	3.0 [Ⓛ]	2.0 [Ⓛ]	12 [Ⓛ]	67 [Ⓛ]
3 [Ⓛ]	15/15 [Ⓛ]	9/15 [Ⓛ]	64 [Ⓛ]	15/9 [Ⓛ]	30/15 [Ⓛ]	30/15 [Ⓛ]	$\beta_{ed1}:47/15$ $\beta_{ed2}:47/15$	4 [Ⓛ]	2 [Ⓛ]	2.0 [Ⓛ]	1.0 [Ⓛ]	15 [Ⓛ]	92 [Ⓛ]
4 [Ⓛ]	2/15 [Ⓛ]	15/15 [Ⓛ]	64 [Ⓛ]	2/15 [Ⓛ]	4/15 [Ⓛ]	2/15 [Ⓛ]	56/75 [Ⓛ]	4 [Ⓛ]	1 [Ⓛ]	3.0 [Ⓛ]	2.0 [Ⓛ]	17 [Ⓛ]	71 [Ⓛ]
5 [Ⓛ]	15/15 ^{(4)Ⓛ}	15/15 ^{(4)Ⓛ}	64 [Ⓛ]	15/15 ^{(4)Ⓛ}	30/15 [Ⓛ]	24/15 [Ⓛ]	134/15 [Ⓛ]	4 [Ⓛ]	1 [Ⓛ]	1.0 [Ⓛ]	0.0 [Ⓛ]	21 [Ⓛ]	81 [Ⓛ]

Note 1: $\Delta ACK, \Delta NACK$ and $\Delta CQI=8$ $A_{hs} = \beta_{hs}/\beta_c = 30/15$ $\beta_{hs} = 30/15 * \beta_c$
 Note 2: CM = 1 for $\beta_c/\beta_d = 12/15, \beta_{hs}/\beta_c = 24/15$. For all other combinations of DPDCH, DPCCH, HS-DPCCH, E-DPDCH and E-DPCCH the MPR is based on the relative CM difference[Ⓛ]
 Note 3 : For subtest 1 the β_c/β_d ratio of 11/15 for the TFC during the measurement period (TF1, TF0) is achieved by setting the signalled gain factors for the reference TFC (TF1, TF1) to $\beta_c = 10/15$ and $\beta_d = 15/15$ [Ⓛ]
 Note 4 : For subtest 5 the β_c/β_d ratio of 15/15 for the TFC during the measurement period (TF1, TF0) is achieved by setting the signalled gain factors for the reference TFC (TF1, TF1) to $\beta_c = 14/15$ and $\beta_d = 15/15$ [Ⓛ]
 Note 5 : Testing UE using E-DPDCH Physical Layer category 1 Sub-test 3 is not required according to TS 25.306 Table 5.1g[Ⓛ]
 Note 6: β_{ed} can not be set directly; it is set by Absolute Grant Value.[Ⓛ]

HSUPA UE category

UE E-DCH Category	Maximum E-DCH Codes Transmitted	Number of HARQ Processes	E-DCH TTI(ms)	Minimum Spreading Factor	Maximum E-DCH Transport Block Bits	Max Rate (Mbps)
1	1	4	10	4	7110	0.7296
2	2	8	2	4	2798	1.4592
	2	4	10	4	14484	
3	2	4	10	4	14484	1.4592
4	2	8	2	2	5772	2.9185
	2	4	10	2	20000	2.00
5	2	4	10	2	20000	2.00
6 (No DPDCH)	4	8	10	2SF2&2SF4	11484	5.76
	4	4	2		20000	2.00
7 (No DPDCH)	4	8	2	2SF2&2SF4	22996	?
	4	4	10		20000	?

NOTE: When 4 codes are transmitted in parallel, two codes shall be transmitted with SF2 and two with SF4. UE categories 1 to 6 support QPSK only. UE category 7 supports QPSK and 16QAM. (TS25.306-7.3.0).

5. DC-HSDPA

SAR is required for Rel. 8 DC-HSDPA when SAR is required for Rel.5 HSDPA; otherwise, the 3G SAR test reduction procedure is applied to DC-HSDPA with 12.2 kbps RMC as the primary mode. Power is measured for DC-HSDPA according to the H-Set 12, FRC configuration in Table C.8.1.12 of 3GPP TS 34.121-1 to determine SAR test reduction. A primary and a Second serving HS-DSCH cell are required to perform the power measurement and for the results to be acceptable.

The following tests were completed according to procedures in section 7.3.13 of 3GPP TS 34.108 v9.5.0. A summary of these settings are illustrated below:

Downlink Physical Channels are set as per 3GPP TS34.121-1 v9.0.0 E.5.0 Levels for HSDPA connection setup

Parameter During Connection setup	Unit	Value
P-CPICH_Ec/Ior	dB	-10
P-CCPCH and SCH_Ec/Ior	dB	-12
PICH_Ec/Ior	dB	-15
HS-PDSCH	dB	off
HS-SCCH_1	dB	off
DPCH_Ec/Ior	dB	-5
OCNS_Ec/Ior	dB	-3.1

Call is set up as per 3GPP TS34.108 v9.5.0 sub clause 7.3.13

The configurations of the fixed reference channels for HSDPA RF tests are described in 3GPP TS 34.121, annex C for FDD and 3GPP TS 34.122.

The measurements were performed with a Fixed Reference Channel (FRC) H-Set 12 with QPSK

Parameter	Value
Nominal average inf. bit rate	60 kbit/s
Inter-TTI Distance	1 TTI"s
Number of HARQ Processes	6 Processes
Information Bit Payload	120 Bits
Number Code Blocks	1 Block
Binary Channel Bits Per TTI	960 Bits
Total Available SMLs in UE	19200 SMLs
Number of SMLs per HARQ Process	3200 SMLs
Coding Rate	0.15
Number of Physical Channel Codes	1

Note:

1.The RMC is intended to be used for DC-HSDPA mode and both cells shall transmit with identical parameters as listed in the table above.

2.Maximum number of transmission is limited to 1,i.e.,retransmission is not allowed. The redundancy and constellation version 0 shall be used.

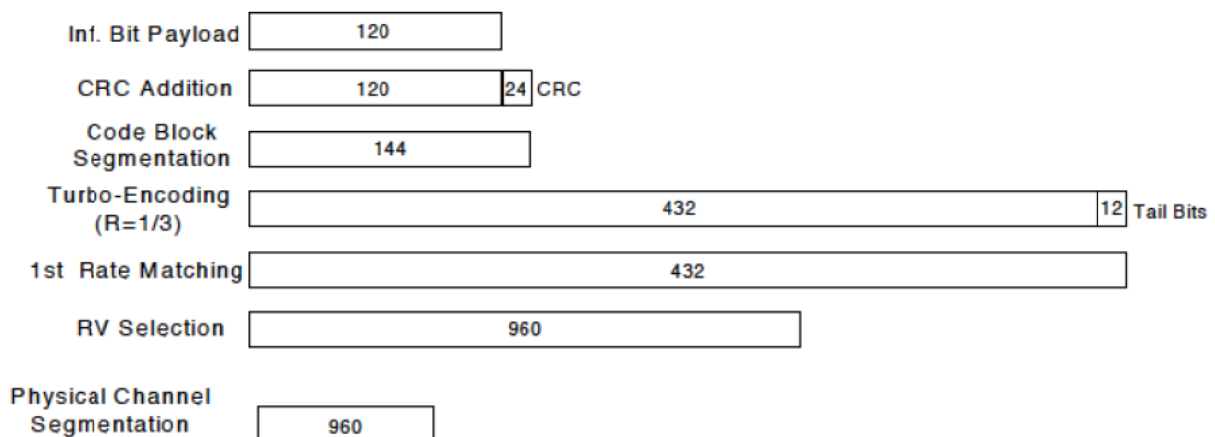


Figure C.8.19: Coding rate for Fixed reference Channel H-Set 12 (QPSK)

The following 4 Sub-tests for HSDPA were completed according to Release 5 procedures. A summary of subtest settings are illustrated below:

Sub-test ^o	β_c ^o	β_d ^o	β_d (SF) ^o	β_c/β_d ^o	β_{hs} (1) ^o	CM(dB)(2) ^o	MPR (dB) ^o
1 ^o	2/15 ^o	15/15 ^o	64 ^o	2/15 ^o	4/15 ^o	0.0 ^o	0 ^o
2 ^o	12/15(3) ^o	15/15(3) ^o	64 ^o	12/15(3) ^o	24/15 ^o	1.0 ^o	0 ^o
3 ^o	15/15 ^o	8/15 ^o	64 ^o	15/8 ^o	30/15 ^o	1.5 ^o	0.5 ^o
4 ^o	15/15 ^o	4/15 ^o	64 ^o	15/4 ^o	30/15 ^o	1.5 ^o	0.5 ^o

Note 1: Δ ACK, Δ NACK and Δ CQI=8 $A_{hs} = \beta_{hs}/\beta_c = 30/15$ $\beta_{hs} = 30/15 * \beta_c$ ^o

Note 2: CM=1 for $\beta_c/\beta_d = 12/15$, $\beta_{hs}/\beta_c = 24/15$. For all other combinations of DPDCH, DPCCH and HS-DPCCH the MPR is based on the relative CM difference. This is applicable for only UEs that support HSDPA in release 6 and later releases.^o

Note 3: For subtest 2 the β_c/β_d ratio of 12/15 for the TFC during the measurement period (TF1, TF0) is achieved by setting the signalled gain factors for the reference TFC (TF1, TF1) to $\beta_c = 11/15$ and $\beta_d = 15/15$ ^o

Up commands are set continuously to set the UE to Max power.

Note:

- 1.The Dual Carriers transmission only applies to HSDPA physical channels
- 2.The Dual Carriers belong to the same Node and are on adjacent carriers.
- 3.The Dual Carriers do not support MIMO to serve UEs configured for dual cell operation
- 4.The Dual Carriers operate in the same frequency band .
- 5.The device doesn't support the modulation of 16QAM in uplink but 64QAM in downlink for DC-HSDPA mode.
- 6.The device doesn't support carrier aggregation for it just can operate in Release 8.

7.1.3 LTE TEST CONFIGURATION

SAR for LTE band exposure configurations is measured according to the procedures of KDB 941225 D05 SAR for LTE Devices. The CMW500 Wide Band Radio Communication Tester was used for LTE output power measurements and SAR testing. Closed loop power control was used so the UE transmits with maximum output power during SAR testing. SAR test were performed with the same number of RB and RB offsets transmitting on all TTI frames(Maximum TTI)

1. Spectrum Plots for RB configurations

A properly configured base station simulator was used for LTE output power measurements and SAR testing. Therefore, spectrum plots for RB configurations were not required to be included in this report.

2. MPR

When MPR is implemented permanently within the UE, regardless of network requirements, only those RB configurations allowed by 3GPP for the channel bandwidth and modulation combinations may be tested with MPR active. Configurations with RB allocations less than the RB thresholds required by 3GPP must be tested without MPR.

The allowed Maximum Power Reduction (MPR) for the maximum output power due to higher order modulation and transmit bandwidth configuration (resource blocks) is specified in Table 6.2.3-1 of the 3GPP TS36.101:

Table 6.2.3-1: Maximum Power Reduction (MPR) for Power Class 3

Modulation	Channel bandwidth / Transmission bandwidth (N_{RB})						MPR (dB)
	1.4 MHz	3.0 MHz	5 MHz	10 MHz	15 MHz	20 MHz	
QPSK	> 5	> 4	> 8	> 12	> 16	> 18	≤ 1
16 QAM	≤ 5	≤ 4	≤ 8	≤ 12	≤ 16	≤ 18	≤ 1
16 QAM	> 5	> 4	> 8	> 12	> 16	> 18	≤ 2

3. A-MPR

A-MPR(Additional MPR) has been disabled for all SAR tests by using Network Signalling Value of “NS_01” on the base station simulator.

4. LTE procedures for SAR testing

A) Largest channel bandwidth standalone SAR test requirements

i) QPSK with 1 RB allocation

Start with the largest channel bandwidth and measure SAR for QPSK with 1 RB allocation, using the RB offset and required test channel combination with the highest maximum output power for RB offsets at the upper edge, middle and lower edge of each required test channel. When the reported SAR is ≤ 0.8 W/kg, testing of the remaining RB offset configurations and required test channels is not required for 1 RB allocation; otherwise, SAR is required for the remaining required test channels and only for the RB offset configuration with the highest output power for that channel. When the reported SAR of a required test channel is > 1.45 W/kg, SAR is required for all three RB offset configurations for that required test channel.

ii) QPSK with 50% RB allocation

The procedures required for 1 RB allocation in i) are applied to measure the SAR for QPSK with 50% RB allocation

iii) QPSK with 100% RB allocation

For QPSK with 100% RB allocation, SAR is not required when the highest maximum output power for 100 % RB allocation is less than the highest maximum output power in 50% and 1 RB allocations and the highest reported SAR for 1 RB and 50% RB allocation in i) and ii) are ≤ 0.8 W/kg. Otherwise, SAR is measured for the highest output power channel and if the reported SAR is > 1.45 W/kg, the remaining required test channels must also be tested.

iv) Higher order modulations

For each modulation besides QPSK; e.g., 16-QAM, 64-QAM, apply the QPSK procedures in above sections to determine the QAM configurations that may need SAR measurement. For each configuration identified as required for testing, SAR is required only when the highest maximum output power for the configuration in the higher order modulation is $> \frac{1}{2}$ dB higher than the same configuration in QPSK or when the reported SAR for the QPSK configuration is > 1.45 W/kg.

B) Other channel bandwidth standalone SAR test requirements

For the other channel bandwidths used by the device in a frequency band, apply all the procedures required for the largest channel bandwidth in section A) to determine the channels and RB configurations that need SAR testing and only measure SAR when the highest maximum output power of a configuration requiring testing in the smaller channel bandwidth is $> \frac{1}{2}$ dB higher than the equivalent channel configurations in the largest channel bandwidth configuration or the reported SAR of a configuration for the largest channel bandwidth is > 1.45 W/kg.

7.1.4 WIFI TEST CONFIGURATION

For WLAN SAR testing, WLAN engineering testing software installed on the DUT can provide continuous transmitting RF signal.

2.4G

Mode	802.11b	802.11g	802.11n HT20	802.11n HT40
Duty cycle	100%			
Crest factor	1			

For WiFi SAR testing, a communication link is set up with the test mode software for WiFi mode test. During the test, at the each test frequency channel, the EUT is operated at the RF continuous emission mode. The RF signal utilized in SAR measurement has 100% duty cycle and its crest factor is 1. The test procedures in KDB 248227 D01 are applied.

7.1.4.1 2.4G SAR Test Requirements

802.11b DSSS SAR Test Requirements

SAR is measured for 2.4 GHz 802.11b DSSS using either a fixed test position or, when applicable, the initial test position procedure. SAR test reduction is determined according to the following:

- 1) When the reported SAR of the highest measured maximum output power channel for the exposure configuration is ≤ 0.8 W/kg, no further SAR testing is required for 802.11b DSSS in that exposure configuration.
- 2) When the reported SAR is > 0.8 W/kg, SAR is required for that exposure configuration using the next highest measured output power channel. When any reported SAR is > 1.2 W/kg, SAR is required for the third channel; i.e., all channels require testing.

2.4 GHz 802.11g/n OFDM SAR Test Exclusion Requirements

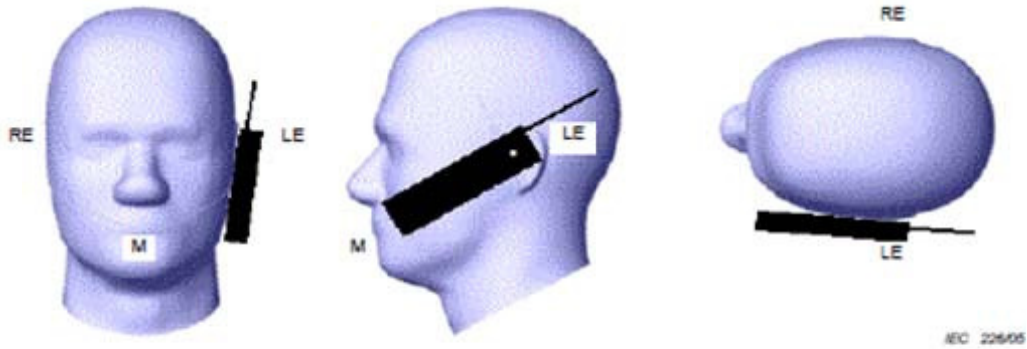
When SAR measurement is required for 2.4 GHz 802.11g/n OFDM configurations, the measurement and test reduction procedures for OFDM are applied. SAR is not required for the following 2.4 GHz OFDM conditions.

- 1) When KDB Publication 447498 SAR test exclusion applies to the OFDM configuration.
- 2) When the highest reported SAR for DSSS is adjusted by the ratio of OFDM to DSSS specified maximum output power and the adjusted SAR is ≤ 1.2 W/kg.

7.2 TEST POSITION

7.2.1 Head test configuration

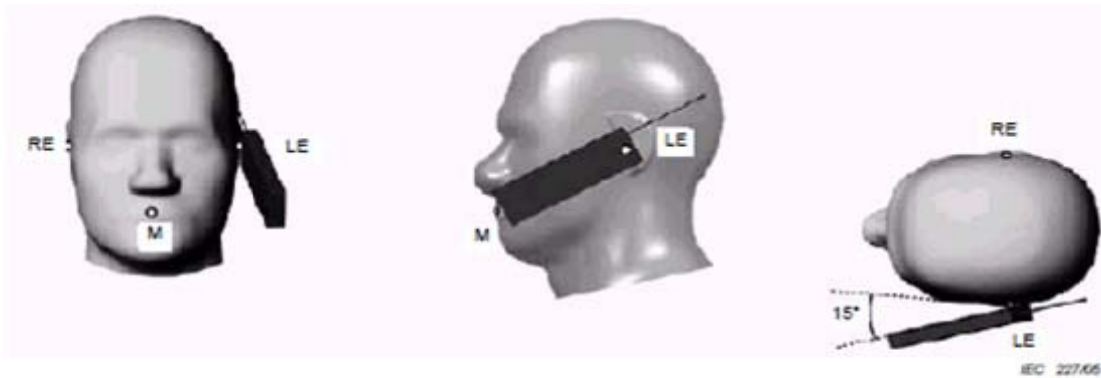
Measurements were made in “cheek” and “tilt” positions on both the left hand and right hand sides of the phantom.



- Key**
- M Mouth reference point
 - LE Left ear reference point (ERP)
 - RE Right ear reference point (ERP)

Figure 1 Cheek position of the wireless device on the left side of SAM

Note1: Cheek position of the wireless device on Right side of SAM also is similar to the left side represented above.



- Key**
- M Mouth reference point
 - LE Left ear reference point (ERP)
 - RE Right ear reference point (ERP)

Figure 2 Tilt position of the wireless device on the left side of SAM

Note2: Tilt position of the wireless device on Right side of SAM also is similar to the left side represented above.

7.2.2 Body-worn test configuration

Body-worn operating configurations should be tested with the belt-clips and holsters attached to the device and positioned against a flat phantom in normal use configurations. Devices with a headset output should be tested with a headset connected to the device. The distance between the device and the phantom was kept 15mm.

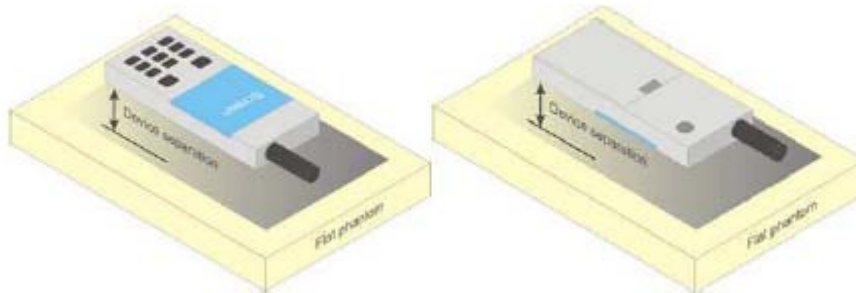


Figure 3 Test positions for body-worn device

7.2.3 Hotspot test configuration

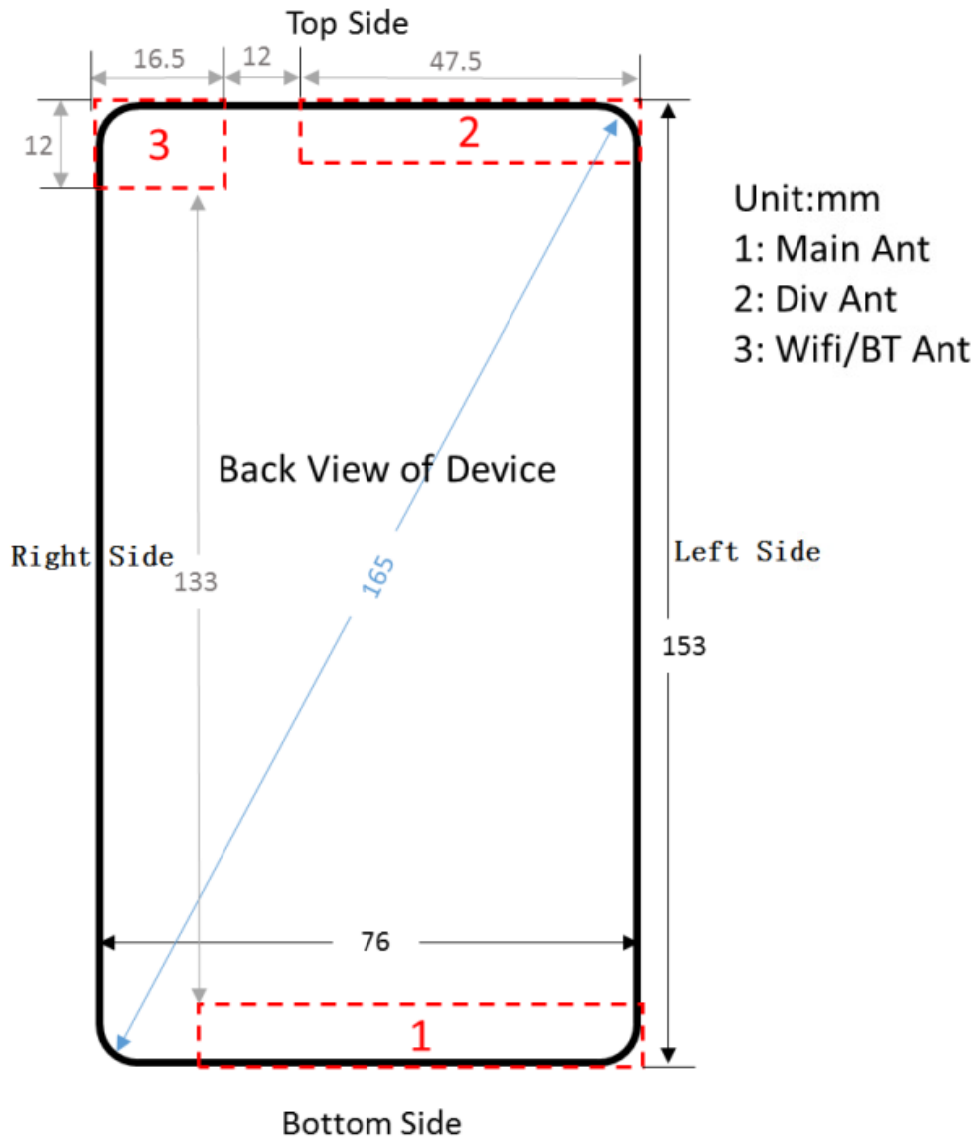
Per FCC KDB 941225D06, The SAR test separation distance for hotspot mode is determined according to device form factor. When the overall length and width of a device is $>9\text{cm} \times 5\text{cm}$, a test separation distance of 10mm is required for hotspot mode SAR measurements. A test separation distance of 5mm or less is required for smaller devices. Hotspot mode SAR is measured for all edges and surfaces of the device with a transmitting antenna located within 25mm from that surface or edge; for the data modes, wireless technologies and frequency bands supporting hotspot mode. The SAR results are used to determine simultaneous transmission SAR test exclusion for hotspot mode; otherwise, simultaneous transmission SAR measurement is required.

7.2.4 Product specific 10-g SAR test configuration

Per KDB 648474 D04, for smart phones with a display diagonal dimension $>15.0\text{cm}$ or an overall diagonal dimension $>16.0\text{cm}$ that provide similar mobile web access and multimedia support found in mini-tablets or UMPC mini-tablets that support voice calls next to the ear, the device is marketed as “Phablet”.

The UMPC mini-tablets procedures must also be applied to test the SAR of all surfaces and edges with an antenna located at $\leq 25\text{mm}$ from that surface or edge, in direct contact with a flat phantom, for product specific 10-g SAR according to the body-equivalent tissue dielectric parameters in KDB 865664 to address interactive hand use exposure conditions. The UMPC mini-tablet 1-g SAR at 5 mm is not required. When hotspot mode applies, product specific 10-g SAR is required only for the surfaces and edges with hotspot mode 1-g reported SAR $>1.2\text{W/kg}$; when power reduction applies to hotspot mode the measured SAR must be scaled to the maximum output power, including tolerance, allowed for phablet modes to compare with the 1.2 W/kg SAR test reduction threshold.

The location of the antennas inside mobile phone is shown as below picture:



Note:

- 1) The length of the diagonal of the mobile phone is 165mm.
- 2) Diversity antenna is used to improve the acceptance of performance of the main antenna, it does not have a transmitter function.

Table 7.2 Sides For Hotspot and product specific 10-g SAR Testing

ANT	Mode	Front Side	Rear Side	Left Side	Right Side	Top Side	Bottom Side
1	2G/3G/LTE	YES	YES	YES	YES	NO	YES
3	WIFI	YES	YES	NO	YES	YES	NO

Note: Per KDB 941225 D06, particular DUT edges were not required to be evaluated for Hotspot SAR if the antenna-to-edge distance is greater than 2.5cm.

8.TEST RESULT

8.1CONDUCTED POWER RESULTS

8.1.1CONDUCTED POWER MEASUREMENTS OF GSM850

GSM850		Tune-u p	Max Burst Average Power (dBm)			Tune-u p	Max Frame Average Power (dBm)		
			128CH	190CH	251CH		128CH	190CH	251CH
			824.2MHz z	836.6MHz	848.8MHz		824.2MHz	836.6MHz	848.8MHz
GSM (CS)		34.00	33.63	33.53	33.36	24.81	24.44	24.34	24.17
GPRS/ EDGE (GMSK)	1 Tx Slot	34.00	33.63	33.53	33.36	24.81	24.44	24.34	24.17
	2 Tx Slots	31.00	29.94	30.06	30.04	24.87	23.81	23.93	23.91
	3 Tx Slots	29.00	27.91	27.88	27.82	24.58	23.49	23.46	23.40
	4 Tx Slots	28.00	26.64	26.54	26.50	24.82	23.46	23.36	23.32
EDGE (8PSK)	1 Tx Slot	27.50	26.83	26.78	26.72	18.31	17.64	17.59	17.53
	2 Tx Slots	25.50	24.27	24.22	24.15	19.37	18.14	18.09	18.02
	3 Tx Slots	23.50	22.71	22.73	22.77	19.08	18.29	18.31	18.35
	4 Tx Slots	22.50	21.62	21.65	21.64	19.32	18.44	18.47	18.46

Note:

- 1) The conducted power of GSM850 is measured with RMS detector.
- 2) Frame-averaged output power was calculated from the measured burst-averaged output power by converting the slot powers into linear units and calculating the energy over 8 time slots.
- 3) Per KDB941225 D01, the bolded GPRS 2Tx mode was selected for SAR testing according to the highest frame –averaged output power table.
- 4) The frame-averaged power is linearly proportion to the slot number configured and it is linearly scaled the maximum burst-averaged power based on time slots. The calculated method is shown as below:

$$\text{Frame-averaged power} = 10 \times \log(\text{Burst-averaged power mW} \times \text{Slot used}/8)$$

8.1.2CONDUCTED POWER MEASUREMENTS OF GSM1900

GSM1900 (Hotspot disabled)		Tune-up	Max Burst Average Power (dBm)			Tune-up	Max Frame Average Power (dBm)		
			512CH	661CH	810CH		512CH	661CH	810CH
			1850.2MHz	1880MHz	1909.8MHz		1850.2MHz	1880MHz	1909.8MHz
GSM (CS)		30.50	29.76	29.61	29.43	21.31	20.57	20.42	20.24
GPRS /EDGE (GMSK)	1 Tx Slot	30.50	29.76	29.61	29.43	21.31	20.57	20.42	20.24
	2 Tx Slots	29.00	28.45	28.38	28.21	22.87	22.32	22.25	22.08
	3 Tx Slots	27.00	26.40	26.38	26.23	22.58	21.98	21.96	21.81
	4 Tx Slots	25.00	24.86	24.74	24.52	21.82	21.68	21.56	21.34
EDGE (8PSK)	1 Tx Slot	26.00	25.95	25.76	25.51	16.81	16.76	16.57	16.32
	2 Tx Slots	24.50	23.73	23.49	23.23	18.37	17.60	17.36	17.10
	3 Tx Slots	22.50	21.83	21.61	21.41	18.08	17.41	17.19	16.99
	4 Tx Slots	21.50	20.95	20.73	20.71	18.32	17.77	17.55	17.53

GSM1900 (Hotspot activated)		Tune-up	Max Burst Average Power (dBm)			Tune-up	Max Frame Average Power (dBm)		
			512CH	661CH	810CH		512CH	661CH	810CH
			1850.2MHz	1880MHz	1909.8MHz		1850.2MHz	1880MHz	1909.8MHz
GPRS /EDGE (GMSK)	1 Tx Slot	27.00	26.60	26.42	26.20	17.81	17.41	17.23	17.01
	2 Tx Slots	24.00	23.98	23.80	23.56	17.87	17.85	17.67	17.43
	3 Tx Slots	23.00	22.55	22.37	22.13	18.58	18.13	17.95	17.71
	4 Tx Slots	21.50	21.16	21.02	20.71	18.32	17.98	17.84	17.53
EDGE (8PSK)	1 Tx Slot	24.50	23.84	23.61	23.32	15.31	14.65	14.42	14.13
	2 Tx Slots	22.00	21.23	20.99	20.82	15.87	15.10	14.86	14.69
	3 Tx Slots	20.50	19.60	19.58	19.27	16.08	15.18	15.16	14.85
	4 Tx Slots	19.00	18.02	17.92	17.84	15.82	14.84	14.74	14.66

Note:

- 1) The conducted power of GSM1900 is measured with RMS detector.
- 2) Frame-averaged output power was calculated from the measured burst-averaged output power by converting the slot powers into linear units and calculating the energy over 8 time slots.
- 3) Per KDB941225 D01, the bolded GPRS 3Tx mode was selected for SAR testing according to the highest frame –averaged output power table.
- 4) The frame-averaged power is linearly proportion to the slot number configured and it is linearly scaled the maximum burst-averaged power based on time slots. The calculated method is shown as below:

$$\text{Frame-averaged power} = 10 \times \log(\text{Burst-averaged power mW} \times \text{Slot used}/8)$$

8.1.3 CONDUCTED POWER MEASUREMENTS OF UMTS Band 2

UMTS Band 2 (Hotspot disabled)		Tune-up	SAR Conducted Power (dBm)		
			9262CH 1852.4	9400CH 1880	9538CH 1907.6
WCDMA	AMR Voice	23.00	22.39	22.43	22.47
	12.2kbps RMC	23.00	22.33	22.41	22.43
	64kbps RMC	23.00	22.41	22.41	22.45
	144kbps RMC	23.00	22.39	22.40	22.50
	384kbps RMC	23.00	22.43	22.41	22.51
HSDPA	Subtest 1	22.00	21.41	21.39	21.49
	Subtest 2	22.00	21.43	21.48	21.49
	Subtest 3	21.50	21.04	20.99	21.05
	Subtest 4	21.50	20.96	21.01	20.06
HSUPA	Subtest 1	22.00	21.28	21.32	21.35
	Subtest 2	20.50	19.61	19.52	19.65
	Subtest 3	21.00	20.61	20.55	20.61
	Subtest 4	20.50	19.56	19.65	19.69
	Subtest 5	21.50	20.61	20.62	20.74
DC-HSDPA	Subtest 1	22.00	21.41	21.39	21.49
	Subtest 2	22.00	21.43	21.48	21.49
	Subtest 3	21.50	21.04	20.99	21.05
	Subtest 4	21.50	20.96	21.01	20.06

UMTS Band 2 (Hotspot activated)		Tune-up	SAR Conducted Power (dBm)		
			9262CH	9400CH	9538CH
			1852.4	1880	1907.6
WCDMA	12.2kbps RMC	21.00	20.55	20.47	20.56
	64kbps RMC	21.00	20.51	20.49	20.50
	144kbps RMC	21.00	20.48	20.47	20.57
	384kbps RMC	21.00	20.48	20.50	20.51
HSDPA	Subtest 1	20.00	19.62	19.53	19.61
	Subtest 2	20.00	19.53	19.49	19.61
	Subtest 3	20.00	19.03	18.98	19.08
	Subtest 4	20.00	19.07	19.02	19.13
HSUPA	Subtest 1	20.00	19.67	19.58	19.57
	Subtest 2	18.50	17.54	17.52	17.65
	Subtest 3	19.50	18.58	18.53	18.50
	Subtest 4	18.50	17.46	17.48	17.59
	Subtest 5	20.00	19.32	19.33	19.36
DC-HSDPA	Subtest 1	20.00	19.62	19.53	19.61
	Subtest 2	20.00	19.53	19.49	19.61
	Subtest 3	20.00	19.03	18.98	19.08
	Subtest 4	20.00	19.07	19.02	19.13

Note:

- 1) The conducted power of UMTS Band 2 is measured with RMS detector.
- 2) Note: Per KDB941225 D01, When the maximum output power and tune-up tolerance specified for production units in a secondary mode is $\leq \frac{1}{4}$ dB higher than the primary mode or when the highest reported SAR of the primary mode is scaled by the ratio of specified maximum output power and tune-up tolerance of secondary to primary mode and the adjusted SAR is ≤ 1.2 W/kg, SAR measurement is not required for the secondary mode.

8.1.4 CONDUCTED POWER MEASUREMENTS OF UMTS Band 4

UMTS Band 4 (Hotspot disabled)		Tune-up	SAR Conducted Power (dBm)		
			1312CH	1413CH	1513CH
			1712.4	1732.6	1752.6
WCDMA	AMR Voice	23.00	21.93	22.11	21.90
	12.2kbps RMC	23.00	21.97	22.15	21.96
	64kbps RMC	23.00	21.98	21.16	21.95
	144kbps RMC	23.00	21.94	22.14	21.94
	384kbps RMC	23.00	21.97	21.14	21.93
HSDPA	Subtest 1	21.50	20.93	21.12	20.91
	Subtest 2	21.50	20.94	21.14	21.01
	Subtest 3	21.00	20.46	20.59	20.46
	Subtest 4	20.50	20.46	20.43	20.49
HSUPA	Subtest 1	21.50	20.94	21.05	20.85
	Subtest 2	20.00	18.99	19.18	19.09
	Subtest 3	20.50	19.93	20.14	19.98
	Subtest 4	20.50	19.07	19.16	19.05
	Subtest 5	21.50	20.45	20.57	20.12
DC-HSDPA	Subtest 1	21.50	20.93	21.12	20.91
	Subtest 2	21.50	20.94	21.14	21.01
	Subtest 3	21.00	20.46	20.59	20.46
	Subtest 4	20.50	20.46	20.43	20.49

UMTS Band 4 (Hotspot activated)		Tune-up	SAR Conducted Power (dBm)		
			1312CH	1413CH	1513CH
			1712.4	1732.6	1752.6
WCDMA	12.2kbps RMC	19.00	17.96	18.17	17.96
	64kbps RMC	19.00	17.93	18.11	17.97
	144kbps RMC	19.00	17.97	18.18	17.96
	384kbps RMC	19.00	17.93	18.11	17.97
HSDPA	Subtest 1	17.50	16.95	17.09	16.92
	Subtest 2	17.50	16.91	17.10	16.93
	Subtest 3	17.50	16.39	16.60	16.44
	Subtest 4	17.50	16.34	16.62	16.44
HSUPA	Subtest 1	17.50	16.98	17.21	17.02
	Subtest 2	16.00	14.88	15.17	15.01
	Subtest 3	16.50	15.92	16.13	16.07
	Subtest 4	16.50	14.86	15.11	14.98
	Subtest 5	18.00	16.94	17.15	16.98
DC-HSDPA	Subtest 1	17.50	16.95	17.09	16.92
	Subtest 2	17.50	16.91	17.10	16.93
	Subtest 3	17.50	16.39	16.60	16.44
	Subtest 4	17.50	16.34	16.62	16.44

Note:

- 1) The conducted power of UMTS Band 4 is measured with RMS detector.
- 2) Per KDB941225 D01, When the maximum output power and tune-up tolerance specified for production units in a secondary mode is $\leq \frac{1}{4}$ dB higher than the primary mode or when the highest reported SAR of the primary mode is scaled by the ratio of specified maximum output power and tune-up tolerance of secondary to primary mode and the adjusted SAR is ≤ 1.2 W/kg, SAR measurement is not required for the secondary mode.

8.1.5 CONDUCTED POWER MEASUREMENTS OF UMTS Band 5

UMTS Band 5		Tune-up	SAR Conducted Power (dBm)		
			4132CH	4182CH	4233CH
			826.4	836.4	846.6
WCDMA	AMR Voice	24.50	23.67	23.68	23.54
	12.2kbps RMC	24.50	23.62	23.56	23.52
	64kbps RMC	24.50	23.64	23.55	23.51
	144kbps RMC	24.50	23.69	23.62	23.58
	384kbps RMC	24.50	23.68	23.61	23.58
HSDPA	Subtest 1	23.50	22.65	22.68	22.61
	Subtest 2	23.50	22.67	22.70	22.65
	Subtest 3	22.50	22.21	22.11	22.08
	Subtest 4	22.50	22.17	22.21	22.07
HSUPA	Subtest 1	22.50	22.21	22.17	22.23
	Subtest 2	22.00	20.77	20.69	20.71
	Subtest 3	22.50	21.51	21.47	21.49
	Subtest 4	22.50	20.70	20.79	20.67
	Subtest 5	22.50	21.26	21.25	21.23
DC-HSDPA	Subtest 1	23.50	22.65	22.68	22.61
	Subtest 2	23.50	22.67	22.70	22.65
	Subtest 3	22.50	22.21	22.11	22.08
	Subtest 4	22.50	22.17	22.21	22.07

Note:

- 1) The conducted power of UMTS Band 5 is measured with RMS detector.
- 2) Per KDB941225 D01, When the maximum output power and tune-up tolerance specified for production units in a secondary mode is $\leq \frac{1}{4}$ dB higher than the primary mode or when the highest reported SAR of the primary mode is scaled by the ratio of specified maximum output power and tune-up tolerance of secondary to primary mode and the adjusted SAR is ≤ 1.2 W/kg, SAR measurement is not required for the secondary mode.

8.1.6 CONDUCTED POWER MEASUREMENTS OF LTE Band 2

1) Conducted power measurement results of LTE Band 2 (Hotspot disabled)

FDD LTE B2					Conducted Power(dBm)		
Bandwidth	Modulation	RB size	RB offset	Tune-up	Low	Mid	High
					18607	18900	19193
					1850.7	1880	1909.3
1.4MHz	QPSK	1	0	23.00	22.08	22.07	22.29
		1	2	23.00	22.28	22.33	22.33
		1	5	23.00	22.24	22.26	22.30
		3	0	23.00	22.21	22.38	22.40
		3	1	23.00	22.35	22.43	22.43
		3	3	23.00	22.35	22.31	22.35
	16QAM	6	0	22.00	21.31	21.34	21.32
		1	0	22.00	21.29	21.27	21.33
		1	2	22.00	21.57	21.54	21.35
		1	5	22.00	21.34	21.23	21.07
		3	0	22.00	21.68	21.43	20.92
		3	1	22.00	21.64	21.35	20.86
		3	3	22.00	21.62	21.28	20.93
		6	0	21.00	20.56	20.50	20.31
Bandwidth	Modulation	RB size	RB offset	Tune-up	Low	Mid	High
					18615	18900	19185
					1851.5	1880	1908.5
3MHz	QPSK	1	0	23.00	22.24	22.42	22.28
		1	7	23.00	22.42	22.51	22.11
		1	14	23.00	22.64	22.31	22.22
		8	0	22.00	21.27	21.27	21.38
		8	3	22.00	21.31	21.29	21.33
		8	7	22.00	21.35	21.35	21.25
		15	0	22.00	21.33	21.33	21.36
	16QAM	1	0	22.00	21.19	21.24	21.39
		1	7	22.00	21.48	21.57	21.53
		1	14	22.00	21.13	21.11	21.22
		8	0	21.00	20.51	20.36	20.36
		8	3	21.00	20.52	20.39	20.41
		8	7	21.00	20.56	20.73	20.43
		15	0	21.00	20.37	20.45	20.47

Bandwidth	Modulation	RB size	RB offset	Tune-up	Low	Mid	High
					18625	18900	19175
					1852.5	1880	1907.5
5MHz	QPSK	1	0	23.00	22.31	22.19	22.07
		1	12	23.00	22.57	22.18	22.61
		1	24	23.00	22.28	21.78	22.30
		12	0	22.00	21.25	21.33	21.36
		12	6	22.00	21.27	21.36	21.43
		12	13	22.00	21.31	21.35	21.40
		25	0	22.00	21.26	21.37	21.39
	16QAM	1	0	22.00	20.92	21.30	21.24
		1	12	22.00	20.98	21.35	21.04
		1	24	22.00	20.78	20.83	20.95
		12	0	21.00	20.38	20.32	20.50
		12	6	21.00	20.40	20.36	20.33
		12	13	21.00	20.29	20.34	20.59
		25	0	21.00	20.59	20.67	20.59
Bandwidth	Modulation	RB size	RB offset	Tune-up	Low	Mid	High
					18650	18900	19150
					1855	1880	1905
10MHz	QPSK	1	0	23.00	22.49	22.47	22.28
		1	24	23.00	22.64	22.53	22.62
		1	49	23.00	22.54	22.42	22.34
		25	0	22.00	21.30	21.43	21.29
		25	12	22.00	21.30	21.37	21.44
		25	25	22.00	21.31	21.34	21.41
		50	0	22.00	21.26	21.37	21.41
	16QAM	1	0	22.00	21.51	21.31	21.43
		1	24	22.00	21.87	21.27	21.33
		1	49	22.00	21.27	21.23	21.50
		25	0	21.00	20.45	20.52	20.72
		25	12	21.00	20.38	20.56	20.79
		25	25	21.00	20.35	20.56	20.70
		50	0	21.00	20.35	20.46	20.52

Bandwidth	Modulation	RB size	RB offset	Tune-up	Low	Mid	High
					18675	18900	19125
					1857.5	1880	1902.5
15MHz	QPSK	1	0	23.00	22.48	22.48	22.32
		1	38	23.00	22.58	22.42	22.34
		1	74	23.00	22.51	22.29	22.43
		36	0	22.00	21.31	21.99	21.30
		36	18	22.00	21.29	21.30	21.28
		36	39	22.00	21.33	21.33	21.41
		75	0	22.00	21.25	21.40	21.38
	16QAM	1	0	22.00	21.20	20.95	21.58
		1	38	22.00	21.93	21.33	21.82
		1	74	22.00	21.36	20.72	21.63
		36	0	21.00	20.32	20.72	20.40
		36	18	21.00	20.46	20.65	20.34
		36	39	21.00	20.52	20.44	20.47
		75	0	21.00	20.32	20.50	20.47
Bandwidth	Modulation	RB size	RB offset	Tune-up	Low	Mid	High
					18700	18900	19100
					1860	1880	1900
20MHz	QPSK	1	0	23.00	22.20	22.37	22.08
		1	50	23.00	22.48	21.37	22.60
		1	99	23.00	22.00	22.17	22.18
		50	0	22.00	21.38	21.38	21.41
		50	25	22.00	21.36	21.39	21.36
		50	50	22.00	21.37	21.43	21.38
		100	0	22.00	21.36	21.41	21.35
	16QAM	1	0	22.00	21.41	20.93	21.18
		1	50	22.00	21.58	20.50	21.31
		1	99	22.00	20.85	20.72	21.22
		50	0	21.00	20.37	20.51	20.40
		50	25	21.00	20.53	20.60	20.45
		50	50	21.00	20.50	20.43	20.38
		100	0	21.00	20.42	20.34	20.46

2) Conducted power measurement results of LTE Band 2 (Hotspot activated)

FDD LTE B2					Conducted Power(dBm)		
Bandwidth	Modulation	RB size	RB offset	Tune-up	Low	Mid	High
					18607	18900	19193
					1850.7	1880	1909.3
1.4MHz	QPSK	1	0	19.50	18.76	18.72	19.06
		1	2	19.50	18.78	18.77	18.91
		1	5	19.50	18.82	18.85	18.81
		3	0	19.50	18.91	18.97	18.85
		3	1	19.50	18.88	19.01	18.98
		3	3	19.50	18.95	19.18	18.97
	16QAM	6	0	19.50	18.86	18.92	18.95
		1	0	19.50	18.70	18.83	18.85
		1	2	19.50	18.74	18.94	18.80
		1	5	19.50	18.69	18.90	18.87
		3	0	19.50	18.68	18.77	18.68
		3	1	19.50	18.72	18.71	18.87
		3	3	19.50	18.63	18.70	18.98
		6	0	19.50	18.64	19.16	19.34
Bandwidth	Modulation	RB size	RB offset	Tune-up	Low	Mid	High
					18615	18900	19185
					1851.5	1880	1908.5
3MHz	QPSK	1	0	19.50	18.67	18.96	18.94
		1	7	19.50	19.07	19.03	19.11
		1	14	19.50	19.05	18.85	18.75
		8	0	19.50	18.86	18.99	18.98
		8	3	19.50	18.83	18.91	18.94
		8	7	19.50	18.82	18.93	18.95
		15	0	19.50	18.88	18.95	18.96
	16QAM	1	0	19.50	18.98	18.73	18.91
		1	7	19.50	19.18	19.05	18.92
		1	14	19.50	19.13	18.73	18.78
		8	0	19.50	19.31	18.93	18.68
		8	3	19.50	19.40	19.17	18.91
		8	7	19.50	19.35	19.17	18.73
		15	0	19.50	19.16	18.98	18.81

Bandwidth	Modulation	RB size	RB offset	Tune-up	Low	Mid	High
					18625	18900	19175
					1852.5	1880	1907.5
5MHz	QPSK	1	0	19.50	18.81	18.77	18.76
		1	12	19.50	19.15	18.80	19.10
		1	24	19.50	18.92	18.67	18.79
		12	0	19.50	18.86	18.94	18.97
		12	6	19.50	18.91	18.93	19.00
		12	13	19.50	18.88	18.95	19.00
		25	0	19.50	18.87	18.92	18.95
	16QAM	1	0	19.50	18.50	18.94	18.37
		1	12	19.50	18.58	18.94	18.56
		1	24	19.50	18.42	18.45	18.13
		12	0	19.50	18.95	18.84	18.85
		12	6	19.50	18.94	18.96	19.11
		12	13	19.50	18.98	19.00	19.05
		25	0	19.50	18.97	19.19	18.95
Bandwidth	Modulation	RB size	RB offset	Tune-up	Low	Mid	High
					18650	18900	19150
					1855	1880	1905
10MHz	QPSK	1	0	19.50	19.15	18.96	18.76
		1	24	19.50	19.10	19.22	18.98
		1	49	19.50	19.16	18.96	18.87
		25	0	19.50	18.95	18.99	18.85
		25	12	19.50	18.92	18.99	18.97
		25	25	19.50	18.88	18.92	18.97
		50	0	19.50	18.91	18.95	18.96
	16QAM	1	0	19.50	18.83	18.85	18.46
		1	24	19.50	19.37	18.84	18.82
		1	49	19.50	18.80	18.54	18.91
		25	0	19.50	18.83	19.01	19.10
		25	12	19.50	18.92	18.98	19.20
		25	25	19.50	18.94	19.07	19.02
		50	0	19.50	18.93	18.93	18.94

Bandwidth	Modulation	RB size	RB offset	Tune-up	Low	Mid	High
					18675	18900	19125
					1857.5	1880	1902.5
15MHz	QPSK	1	0	19.50	18.98	18.96	18.87
		1	38	19.50	19.08	18.96	18.91
		1	74	19.50	19.12	18.76	18.85
		36	0	19.50	18.89	18.76	18.87
		36	18	19.50	18.90	18.96	18.88
		36	39	19.50	18.87	18.95	18.96
		75	0	19.50	18.85	18.95	18.94
	16QAM	1	0	19.50	18.77	18.49	19.02
		1	38	19.50	19.47	18.80	19.01
		1	74	19.50	18.78	18.38	19.22
		36	0	19.50	18.92	18.38	18.80
		36	18	19.50	18.89	18.99	18.93
		36	39	19.50	18.95	18.97	18.97
		75	0	19.50	18.90	18.84	19.09
Bandwidth	Modulation	RB size	RB offset	Tune-up	Low	Mid	High
					18700	18900	19100
					1860	1880	1900
20MHz	QPSK	1	0	19.50	18.47	18.90	18.55
		1	50	19.50	18.85	18.93	19.06
		1	99	19.50	18.38	18.66	18.77
		50	0	19.50	18.92	18.96	18.90
		50	25	19.50	18.99	19.02	18.88
		50	50	19.50	18.93	18.95	18.95
		100	0	19.50	18.91	18.95	18.91
	16QAM	1	0	19.50	18.95	18.52	18.41
		1	50	19.50	19.33	18.99	18.78
		1	99	19.50	18.46	18.33	18.69
		50	0	19.50	18.94	18.92	18.98
		50	25	19.50	19.09	19.02	18.95
		50	50	19.50	18.99	18.97	18.90
		100	0	19.50	18.99	19.02	18.98

8.1.7 CONDUCTED POWER MEASUREMENTS OF LTE Band 4

1) Conducted power measurement results of LTE Band 4 (Hotspot disabled)

FDD LTE B4					Conducted Power(dBm)		
Bandwidth	Modulation	RB size	RB offset	Tune-up	Low	Mid	High
					19957	20175	20393
					1710.7	1732.5	1754.3
1.4MHz	QPSK	1	0	23.00	22.04	22.13	21.89
		1	2	23.00	22.06	22.18	22.05
		1	5	23.00	21.98	21.96	22.02
		3	0	23.00	21.96	22.12	22.15
		3	1	23.00	22.11	22.28	22.17
		3	3	23.00	22.31	22.29	22.17
	16QAM	6	0	22.00	20.96	21.04	21.11
		1	0	22.00	20.90	21.30	21.19
		1	2	22.00	21.09	21.14	21.12
		1	5	22.00	20.87	20.89	21.08
		3	0	22.00	21.14	20.91	20.91
		3	1	22.00	21.12	20.94	20.82
		3	3	22.00	21.16	20.91	20.87
		6	0	21.00	20.22	19.99	20.32
Bandwidth	Modulation	RB size	RB offset	Tune-up	Low	Mid	High
					19965	20175	20385
					1711.5	1732.5	1753.5
3MHz	QPSK	1	0	23.00	22.10	22.31	21.79
		1	7	23.00	22.01	22.19	22.17
		1	14	23.00	21.76	21.98	22.02
		8	0	22.00	20.93	21.12	21.11
		8	3	22.00	20.93	21.10	21.14
		8	7	22.00	21.03	20.96	21.18
		15	0	22.00	20.98	21.12	21.18
	16QAM	1	0	22.00	20.88	20.87	20.70
		1	7	22.00	20.85	21.31	21.04
		1	14	22.00	20.79	20.86	20.92
		8	0	21.00	19.86	20.20	19.98
		8	3	21.00	20.21	20.17	20.14
		8	7	21.00	20.22	20.14	20.16
		15	0	21.00	20.17	20.28	20.19

Bandwidth	Modulation	RB size	RB offset	Tune-up	Low	Mid	High
					19975	20175	20375
					1712.5	1732.5	1752.5
5MHz	QPSK	1	0	23.00	21.93	21.66	21.81
		1	12	23.00	22.14	21.80	21.92
		1	24	23.00	22.01	21.60	22.21
		12	0	22.00	21.00	21.13	21.07
		12	6	22.00	21.01	21.17	21.06
		12	13	22.00	21.01	21.02	21.26
		25	0	22.00	20.97	21.11	21.08
	16QAM	1	0	22.00	20.37	21.10	20.64
		1	12	22.00	20.44	21.07	20.94
		1	24	22.00	20.36	20.75	20.48
		12	0	21.00	19.97	20.30	19.99
		12	6	21.00	20.07	20.18	20.01
		12	13	21.00	20.12	20.01	20.41
		25	0	21.00	20.31	20.27	20.21
Bandwidth	Modulation	RB size	RB offset	Tune-up	Low	Mid	High
					20000	20175	20350
					1715	1732.5	1750
10MHz	QPSK	1	0	23.00	21.98	22.11	22.07
		1	24	23.00	22.32	22.15	22.18
		1	49	23.00	21.99	22.17	22.26
		25	0	22.00	21.03	21.09	21.02
		25	12	22.00	21.04	21.11	21.10
		25	25	22.00	20.97	21.04	21.16
		50	0	22.00	21.01	21.10	21.05
	16QAM	1	0	22.00	20.85	20.56	21.05
		1	24	22.00	21.51	21.04	20.96
		1	49	22.00	20.87	20.44	21.27
		25	0	21.00	20.15	20.24	20.36
		25	12	21.00	20.08	20.28	20.26
		25	25	21.00	19.96	20.33	20.42
		50	0	21.00	20.05	20.36	20.10

Bandwidth	Modulation	RB size	RB offset	Tune-up	Low	Mid	High
					20025	20175	20325
					1717.5	1732.5	1747.5
15MHz	QPSK	1	0	23.00	21.96	22.03	22.24
		1	37	23.00	22.31	22.17	22.00
		1	74	23.00	22.18	22.02	22.25
		36	0	22.00	21.06	21.92	21.09
		36	19	22.00	21.01	21.15	21.07
		36	39	22.00	21.10	21.12	21.04
		75	0	22.00	21.04	21.11	21.07
	16QAM	1	0	22.00	20.83	20.87	21.80
		1	37	22.00	21.59	20.92	21.61
		1	74	22.00	21.08	20.53	21.93
		36	0	21.00	20.05	20.53	20.21
		36	19	21.00	20.10	20.16	20.21
		36	39	21.00	20.16	20.20	20.18
		75	0	21.00	20.09	20.29	20.14
Bandwidth	Modulation	RB size	RB offset	Tune-up	Low	Mid	High
					20050	20175	20300
					1720	1732.5	1745
20MHz	QPSK	1	0	23.00	21.53	22.22	21.97
		1	50	23.00	22.05	21.23	22.20
		1	99	23.00	21.81	22.12	22.07
		50	0	22.00	21.07	21.14	21.26
		50	25	22.00	21.14	21.15	21.08
		50	50	22.00	21.23	21.22	21.08
		100	0	22.00	21.11	21.12	21.19
	16QAM	1	0	22.00	20.46	20.84	21.12
		1	50	22.00	20.71	20.42	20.94
		1	99	22.00	20.56	20.79	21.06
		50	0	21.00	20.17	20.25	20.23
		50	25	21.00	20.37	20.43	19.98
		50	50	21.00	20.42	20.31	19.94
		100	0	21.00	20.21	20.20	20.18

2) Conducted power measurement results of LTE Band 4 (Hotspot activated)

FDD LTE B4					Conducted Power(dBm)		
Bandwidth	Modulation	RB size	RB offset	Tune-up	Low	Mid	High
					19957	20175	20393
					1710.7	1732.5	1754.3
1.4MHz	QPSK	1	0	17.50	16.14	16.53	16.42
		1	2	17.50	16.24	16.43	16.62
		1	5	17.50	16.20	16.39	16.35
		3	0	17.50	16.35	16.60	16.50
		3	1	17.50	16.53	16.53	16.59
		3	3	17.50	16.50	16.59	16.66
	16QAM	6	0	17.50	16.39	16.46	16.52
		1	0	17.50	16.22	16.32	16.38
		1	2	17.50	16.21	16.30	16.44
		1	5	17.50	16.25	16.17	16.40
		3	0	17.50	16.08	15.98	16.25
		3	1	17.50	16.18	16.33	16.22
		3	3	17.50	16.15	16.41	16.23
		6	0	17.50	16.10	16.21	16.61
Bandwidth	Modulation	RB size	RB offset	Tune-up	Low	Mid	High
					19965	20175	20385
					1711.5	1732.5	1753.5
3MHz	QPSK	1	0	17.50	16.28	16.42	16.15
		1	7	17.50	16.28	16.47	16.39
		1	14	17.50	16.23	16.35	16.37
		8	0	17.50	16.29	16.49	16.41
		8	3	17.50	16.29	16.51	16.58
		8	7	17.50	16.37	16.41	16.57
		15	0	17.50	16.43	16.52	16.61
	16QAM	1	0	17.50	16.09	16.21	16.06
		1	7	17.50	16.35	16.59	16.27
		1	14	17.50	15.99	16.16	16.26
		8	0	17.50	16.44	16.46	16.48
		8	3	17.50	16.46	16.47	16.48
		8	7	17.50	16.44	16.40	16.38
		15	0	17.50	16.25	16.46	16.51

Bandwidth	Modulation	RB size	RB offset	Tune-up	Low	Mid	High
					19975	20175	20375
					1712.5	1732.5	1752.5
5MHz	QPSK	1	0	17.50	16.24	16.36	16.30
		1	12	17.50	16.53	16.30	16.52
		1	24	17.50	16.24	15.96	16.70
		12	0	17.50	16.30	16.51	16.41
		12	6	17.50	16.32	16.59	16.40
		12	13	17.50	16.34	16.46	16.52
		25	0	17.50	16.29	16.53	16.44
	16QAM	1	0	17.50	15.91	16.46	15.97
		1	12	17.50	15.89	16.41	16.04
		1	24	17.50	15.71	16.26	15.96
		12	0	17.50	16.16	16.56	16.26
		12	6	17.50	16.35	16.46	16.39
		12	13	17.50	16.43	16.30	16.51
		25	0	17.50	16.43	16.57	16.44
Bandwidth	Modulation	RB size	RB offset	Tune-up	Low	Mid	High
					20000	20175	20350
					1715	1732.5	1750
10MHz	QPSK	1	0	17.50	16.48	16.47	16.33
		1	24	17.50	16.62	16.58	16.47
		1	49	17.50	16.58	16.44	16.51
		25	0	17.50	16.36	16.49	16.37
		25	12	17.50	16.35	16.54	16.34
		25	25	17.50	16.32	16.50	16.39
		50	0	17.50	16.32	16.45	16.35
	16QAM	1	0	17.50	16.13	16.16	16.33
		1	24	17.50	16.75	16.05	16.28
		1	49	17.50	16.09	15.82	16.64
		25	0	17.50	16.38	16.51	16.42
		25	12	17.50	16.33	16.65	16.42
		25	25	17.50	16.35	16.43	16.48
		50	0	17.50	16.16	16.41	16.32

Bandwidth	Modulation	RB size	RB offset	Tune-up	Low	Mid	High
					20025	20175	20325
					1717.5	1732.5	1747.5
15MHz	QPSK	1	0	17.50	16.61	16.37	16.50
		1	37	17.50	16.60	16.32	16.22
		1	74	17.50	16.53	16.39	16.58
		36	0	17.50	16.29	16.39	16.36
		36	19	17.50	16.30	16.51	16.35
		36	39	17.50	16.41	16.54	16.40
		75	0	17.50	16.35	16.48	16.36
	16QAM	1	0	17.50	16.28	16.34	17.08
		1	37	17.50	16.90	16.23	16.87
		1	74	17.50	16.46	15.85	17.21
		36	0	17.50	16.31	15.85	16.30
		36	19	17.50	16.25	16.51	16.34
		36	39	17.50	16.38	16.53	16.28
		75	0	17.50	16.44	16.58	16.28
Bandwidth	Modulation	RB size	RB offset	Tune-up	Low	Mid	High
					20050	20175	20300
					1720	1732.5	1745
20MHz	QPSK	1	0	17.50	15.78	16.54	16.25
		1	50	17.50	16.34	16.56	16.50
		1	99	17.50	16.19	16.54	16.66
		50	0	17.50	16.33	16.50	16.53
		50	25	17.50	16.46	16.45	16.37
		50	50	17.50	16.56	16.48	16.38
		100	0	17.50	16.45	16.51	16.44
	16QAM	1	0	17.50	16.09	16.19	16.36
		1	50	17.50	15.88	16.58	16.13
		1	99	17.50	15.98	16.11	16.07
		50	0	17.50	16.29	16.44	16.51
		50	25	17.50	16.46	16.53	16.29
		50	50	17.50	16.58	16.53	16.27
		100	0	17.50	16.49	16.37	16.43

8.1.8 CONDUCTED POWER MEASUREMENTS OF LTE Band 5

FDD LTE B5					Conducted Power(dBm)		
Bandwidth	Modulation	RB size	RB offset	Tune-up	Low	Mid	High
					20407	20525	20643
					824.7	836.5	848.3
1.4MHz	QPSK	1	0	23.50	23.07	22.92	22.88
		1	2	23.50	22.89	23.04	22.96
		1	5	23.50	23.10	22.89	22.92
		3	0	23.50	22.90	22.97	22.89
		3	1	23.50	23.02	22.99	23.10
		3	3	23.50	22.94	22.98	22.99
		6	0	22.50	21.95	22.06	21.91
	16QAM	1	0	22.50	21.88	21.73	22.17
		1	2	22.50	21.86	21.84	21.81
		1	5	22.50	21.91	21.79	21.79
		3	0	22.50	21.78	21.64	21.59
		3	1	22.50	21.79	21.66	21.53
		3	3	22.50	21.83	21.63	21.51
		6	0	21.50	20.99	20.77	20.70
Bandwidth	Modulation	RB size	RB offset	Tune-up	Low	Mid	High
					20415	20525	20635
					825.5	836.5	847.5
3MHz	QPSK	1	0	23.50	22.85	22.96	22.71
		1	7	23.50	23.26	22.93	22.85
		1	14	23.50	22.84	23.03	22.83
		8	0	22.50	22.03	21.94	21.93
		8	3	22.50	21.93	21.89	21.99
		8	7	22.50	21.93	21.97	22.04
		15	0	22.50	22.04	22.02	22.01
	16QAM	1	0	22.50	21.51	21.87	21.50
		1	7	22.50	21.55	22.24	22.10
		1	14	22.50	21.56	21.97	21.80
		8	0	21.50	21.08	20.90	21.11
		8	3	21.50	21.05	20.90	21.07
		8	7	21.50	21.14	21.02	21.05
		15	0	21.50	21.03	21.09	20.83

Bandwidth	Modulation	RB size	RB offset	Tune-up	Low	Mid	High
					20425	20525	20625
					826.5	836.5	846.5
5MHz	QPSK	1	0	23.50	22.90	22.51	22.90
		1	12	23.50	23.16	22.89	23.17
		1	24	23.50	23.01	22.57	22.82
		12	0	22.50	21.98	21.90	22.05
		12	6	22.50	22.02	21.99	22.09
		12	13	22.50	22.03	21.90	22.04
		25	0	22.50	21.97	21.94	22.04
	16QAM	1	0	22.50	21.62	21.94	21.69
		1	12	22.50	21.44	21.94	21.74
		1	24	22.50	21.58	21.82	21.15
		12	0	21.50	21.08	20.90	20.85
		12	6	21.50	20.96	20.95	20.93
		12	13	21.50	20.95	20.97	21.04
		25	0	21.50	21.10	21.16	20.86
Bandwidth	Modulation	RB size	RB offset	Tune-up	Low	Mid	High
					20450	20525	20600
					829	836.5	844
10MHz	QPSK	1	0	23.50	22.93	23.03	22.91
		1	24	23.50	23.37	23.02	23.24
		1	49	23.50	23.08	22.98	22.76
		25	0	22.50	22.01	21.94	21.97
		25	12	22.50	21.98	21.95	21.94
		25	25	22.50	21.91	21.93	21.96
		50	0	22.50	22.00	21.92	21.94
	16QAM	1	0	22.50	21.57	21.79	21.51
		1	24	22.50	22.06	21.92	22.06
		1	49	22.50	21.47	21.43	21.47
		25	0	21.50	21.04	20.92	21.13
		25	12	21.50	21.03	20.99	21.13
		25	25	21.50	20.96	20.99	21.01
		50	0	21.50	21.04	21.00	20.94

8.1.9 CONDUCTED POWER MEASUREMENTS OF LTE BAND 7

1) Conducted power measurement results of LTE Band 7 (Hotspot disabled)

FDD LTE B7					Conducted Power(dBm)		
Bandwidth	Modulation	RB size	RB offset	Tune-up	Low	Mid	High
					20775	21100	21425
					2502.5	2535	2567.5
5MHz	QPSK	1	0	22.50	21.89	21.67	21.93
		1	12	22.50	22.13	21.74	22.19
		1	24	22.50	21.87	21.48	21.90
		12	0	21.50	21.04	21.05	21.15
		12	6	21.50	21.10	21.07	21.14
		12	13	21.50	21.07	21.13	21.06
		25	0	21.50	21.05	21.05	21.09
	16QAM	1	0	21.50	20.51	20.82	20.72
		1	12	21.50	20.63	21.12	20.96
		1	24	21.50	20.43	20.53	20.71
		12	0	20.50	19.90	19.87	20.20
		12	6	20.50	20.04	19.93	20.20
		12	13	20.50	20.06	20.02	20.27
		25	0	20.50	20.11	19.96	20.10
Bandwidth	Modulation	RB size	RB offset	Tune-up	Low	Mid	High
					20800	21100	21400
					2505	2535	2565
10MHz	QPSK	1	0	22.50	21.87	22.28	22.03
		1	24	22.50	22.32	22.21	22.22
		1	49	22.50	21.90	22.19	22.05
		25	0	21.50	21.10	21.23	21.17
		25	12	21.50	21.15	21.09	21.11
		25	25	21.50	21.13	21.09	21.10
		50	0	21.50	21.09	21.13	21.15
	16QAM	1	0	21.50	20.91	21.17	21.14
		1	24	21.50	21.43	20.99	21.16
		1	49	21.50	21.00	21.10	21.16
		25	0	20.50	20.10	20.35	20.31
		25	12	20.50	20.21	20.34	20.17
		25	25	20.50	20.11	20.14	20.15
		50	0	20.50	20.13	20.02	20.12

Bandwidth	Modulation	RB size	RB offset	Tune-up	Low	Mid	High
					20825	21100	21375
					2507.5	2535	2562.5
15MHz	QPSK	1	0	22.50	22.16	22.13	21.94
		1	38	22.50	22.42	22.07	22.06
		1	74	22.50	22.15	22.10	22.05
		36	0	21.50	21.14	21.20	21.11
		36	18	21.50	21.11	21.22	21.09
		36	39	21.50	21.10	21.15	21.15
		75	0	21.50	21.09	21.11	21.10
	16QAM	1	0	21.50	20.97	21.09	21.43
		1	38	21.50	21.46	20.98	21.42
		1	74	21.50	21.03	20.56	21.33
		36	0	20.50	20.15	20.25	20.17
		36	18	20.50	20.17	20.21	20.17
		36	39	20.50	20.17	20.13	20.22
		75	0	20.50	20.18	20.19	20.22
Bandwidth	Modulation	RB size	RB offset	Tune-up	Low	Mid	High
					20850	21100	21350
					2510	2535	2560
20MHz	QPSK	1	0	22.50	21.49	22.14	21.76
		1	50	22.50	22.20	22.15	22.37
		1	99	22.50	21.83	22.00	22.23
		50	0	21.50	21.11	21.26	21.18
		50	25	21.50	21.10	21.23	21.23
		50	50	21.50	21.18	21.19	21.16
		100	0	21.50	21.10	21.15	21.16
	16QAM	1	0	21.50	20.57	20.72	20.93
		1	50	21.50	21.44	21.07	21.04
		1	99	21.50	21.00	20.67	20.70
		50	0	20.50	20.26	20.39	20.05
		50	25	20.50	20.27	20.24	20.02
		50	50	20.50	20.28	20.15	20.09
		100	0	20.50	20.20	20.18	20.08

2) Conducted power measurement results of LTE Band 7 (Hotspot activated)

FDD LTE B7					Conducted Power(dBm)		
Bandwidth	Modulation	RB size	RB offset	Tune-up	Low	Mid	High
					20775	21100	21425
					2502.5	2535	2567.5
5MHz	QPSK	1	0	20.50	18.74	19.14	19.14
		1	12	20.50	18.93	19.28	19.49
		1	24	20.50	18.64	18.98	19.21
		12	0	19.50	18.99	19.19	19.22
		12	6	19.50	19.05	19.10	19.21
		12	13	19.50	19.13	19.15	19.22
		25	0	19.50	19.02	19.15	19.22
	16QAM	1	0	19.50	19.01	18.83	18.76
		1	12	19.50	19.11	18.77	18.81
		1	24	19.50	18.60	18.30	18.62
		12	0	19.50	19.04	19.08	19.22
		12	6	19.50	19.20	19.28	19.18
		12	13	19.50	19.01	19.16	19.12
		25	0	19.50	19.14	19.24	19.01
Bandwidth	Modulation	RB size	RB offset	Tune-up	Low	Mid	High
					20800	21100	21400
					2505	2535	2565
10MHz	QPSK	1	0	20.50	19.32	19.30	19.11
		1	24	20.50	19.41	19.33	19.42
		1	49	20.50	19.34	19.23	19.16
		25	0	20.50	19.20	19.26	19.25
		25	12	20.50	19.19	19.18	19.22
		25	25	20.50	19.17	19.28	19.24
		50	0	20.50	19.22	19.21	19.28
	16QAM	1	0	19.50	18.94	19.15	19.20
		1	24	19.50	19.49	19.07	19.17
		1	49	19.50	19.04	18.56	19.34
		25	0	20.50	19.26	19.25	19.42
		25	12	20.50	19.28	19.27	19.33
		25	25	20.50	19.23	19.28	19.25
		50	0	20.50	19.27	19.24	19.24

Bandwidth	Modulation	RB size	RB offset	Tune-up	Low	Mid	High
					20825	21100	21375
					2507.5	2535	2562.5
15MHz	QPSK	1	0	20.50	19.24	19.19	19.16
		1	38	20.50	19.35	19.16	19.13
		1	74	20.50	19.27	19.10	19.24
		36	0	20.50	19.15	19.28	19.26
		36	18	20.50	19.23	19.24	19.21
		36	39	20.50	19.17	19.24	19.26
		75	0	20.50	19.16	19.22	19.25
	16QAM	1	0	20.50	19.02	19.13	19.75
		1	38	20.50	19.77	19.05	20.39
		1	74	20.50	19.20	18.56	19.44
		36	0	20.50	19.20	19.32	19.26
		36	18	20.50	19.25	19.36	19.18
		36	39	20.50	19.20	19.26	19.15
		75	0	20.50	19.22	19.30	19.27
Bandwidth	Modulation	RB size	RB offset	Tune-up	Low	Mid	High
					20850	21100	21350
					2510	2535	2560
20MHz	QPSK	1	0	20.50	18.97	19.27	18.84
		1	50	20.50	19.26	19.30	19.36
		1	99	20.50	18.90	19.22	18.92
		50	0	20.50	19.19	19.34	19.23
		50	25	20.50	19.16	19.28	19.22
		50	50	20.50	19.32	19.26	19.23
		100	0	20.50	19.17	19.25	19.28
	16QAM	1	0	20.50	18.74	18.74	18.98
		1	50	20.50	19.44	19.12	19.16
		1	99	20.50	18.80	18.79	18.74
		50	0	20.50	19.37	19.45	19.22
		50	25	20.50	19.20	19.25	19.29
		50	50	20.50	19.25	19.16	19.25
		100	0	20.50	19.25	19.20	19.29

8.1.10 CONDUCTED POWER MEASUREMENTS OF LTE BAND 12

FDD LTE B12					Conducted Power(dBm)		
Bandwidth	Modulation	RB size	RB offset	Tune-up	Low	Mid	High
					23017	23095	23173
					699.7	707.5	715.3
1.4MHz	QPSK	1	0	23.50	22.38	22.51	22.69
		1	2	23.50	22.69	22.82	22.88
		1	5	23.50	22.64	22.54	22.85
		3	0	23.50	22.70	22.75	22.68
		3	1	23.50	22.76	22.77	22.85
		3	3	23.50	22.69	22.66	22.80
	16QAM	6	0	22.50	21.74	21.68	21.86
		1	0	22.50	21.67	21.44	21.61
		1	2	22.50	21.92	21.77	21.54
		1	5	22.50	21.70	21.57	21.64
		3	0	22.50	21.92	21.59	21.27
		3	1	22.50	21.91	21.57	21.36
		3	3	22.50	21.93	21.75	21.30
6	0	21.50	20.88	20.60	20.58		
Bandwidth	Modulation	RB size	RB offset	Tune-up	Low	Mid	High
					23025	23095	23165
					700.5	707.5	714.5
3MHz	QPSK	1	0	23.50	22.61	22.75	22.76
		1	7	23.50	22.70	22.72	22.72
		1	14	23.50	22.70	22.73	22.70
		8	0	22.50	21.77	21.71	21.78
		8	3	22.50	21.81	21.70	21.75
		8	7	22.50	21.81	21.63	21.89
		15	0	22.50	21.83	21.73	21.76
	16QAM	1	0	22.50	21.65	21.33	21.46
		1	7	22.50	21.53	21.22	21.84
		1	14	22.50	21.51	21.23	21.76
		8	0	21.50	20.54	20.66	20.89
		8	3	21.50	20.65	20.51	20.89
		8	7	21.50	20.70	20.58	20.90
15	0	21.50	20.71	20.84	20.86		

Bandwidth	Modulation	RB size	RB offset	Tune-up	Low	Mid	High
					23035	23095	23155
					701.5	707.5	713.5
5MHz	QPSK	1	0	23.50	22.63	22.71	22.16
		1	12	23.50	22.62	22.83	22.37
		1	24	23.50	22.62	22.71	22.25
		12	0	22.50	21.82	21.74	21.77
		12	6	22.50	21.84	21.73	21.88
		12	13	22.50	21.78	21.72	21.68
		25	0	22.50	21.78	21.70	21.78
	16QAM	1	0	22.50	21.58	21.22	21.23
		1	12	22.50	21.33	21.71	21.83
		1	24	22.50	21.26	21.16	21.56
		12	0	21.50	20.69	20.64	20.75
		12	6	21.50	20.65	20.64	20.80
		12	13	21.50	20.85	20.68	20.82
		25	0	21.50	20.84	20.96	20.95
Bandwidth	Modulation	RB size	RB offset	Tune-up	Low	Mid	High
					23060	23095	23130
					704	707.5	711
10MHz	QPSK	1	0	23.50	22.52	22.78	22.77
		1	24	23.50	22.64	22.95	22.79
		1	49	23.50	22.78	22.72	22.77
		25	0	22.50	21.73	21.71	21.81
		25	12	22.50	21.69	21.74	21.79
		25	25	22.50	21.72	21.75	21.79
		50	0	22.50	21.73	21.68	21.73
	16QAM	1	0	22.50	21.17	21.56	21.53
		1	24	22.50	21.84	22.30	21.56
		1	49	22.50	21.65	21.62	21.05
		25	0	21.50	20.80	20.81	20.97
		25	12	21.50	20.88	20.76	20.88
		25	25	21.50	20.83	20.75	20.99
		50	0	21.50	20.74	20.85	20.73

8.1.11 CONDUCTED POWER MEASUREMENTS OF LTE BAND 17

FDD LTE B17					Conducted Power(dBm)		
Bandwidth	Modulation	RB size	RB offset	Tune-up	Low	Mid	High
					23755	23790	23825
					706.5	710	713.5
5MHz	QPSK	1	0	23.50	22.71	22.66	22.50
		1	12	23.50	22.98	22.73	22.58
		1	24	23.50	22.65	22.74	22.63
		12	0	22.50	21.81	21.76	21.78
		12	6	22.50	21.75	21.84	21.84
		12	13	22.50	21.77	21.83	21.83
		25	0	22.50	21.77	21.76	21.81
	16QAM	1	0	22.50	21.33	21.24	21.62
		1	12	22.50	21.53	21.50	21.77
		1	24	22.50	21.26	20.88	21.33
		12	0	21.50	20.69	20.76	20.67
		12	6	21.50	20.75	20.67	20.81
		12	13	21.50	20.88	20.69	20.82
		25	0	21.50	20.73	20.97	21.00
Bandwidth	Modulation	RB size	RB offset	Tune-up	Low	Mid	High
					23780	23790	23800
					709	710	711
10MHz	QPSK	1	0	23.50	22.76	23.05	22.85
		1	24	23.50	23.12	23.17	22.93
		1	49	23.50	22.60	22.92	22.67
		25	0	22.50	21.90	21.78	21.82
		25	12	22.50	21.91	21.82	21.89
		25	25	22.50	21.86	21.80	21.82
		50	0	22.50	21.89	21.83	21.87
	16QAM	1	0	22.50	21.35	21.69	21.61
		1	24	22.50	21.75	22.37	21.45
		1	49	22.50	21.66	21.63	21.45
		25	0	21.50	21.09	20.79	20.89
		25	12	21.50	20.92	20.90	21.12
		25	25	21.50	20.98	20.85	20.92
		50	0	21.50	20.84	20.74	20.72

8.1.12 CONDUCTED POWER MEASUREMENTS OF WiFi 2.4G

1) Full Power

Mode	Channel	Frequency (MHz)	Data Rate (Mbps)	Power Setting	Tune-up	Average Power (dBm)	SAR Test (Yes/No)
802.11b	1	2412	1	16.00	17.80	16.92	No
	6	2437		16.00	17.80	17.31	Yes
	11	2462		16.00	17.80	16.35	No
802.11g	1	2412	6	Not Required	14.00	Not Required	No
	6	2437		Not Required	14.00	Not Required	No
	11	2462		Not Required	14.00	Not Required	No
802.11n HT20	1	2412	6.5	Not Required	12.00	Not Required	No
	6	2437		Not Required	12.00	Not Required	No
	11	2462		Not Required	12.00	Not Required	No
802.11n HT40	3	2422	13.5	Not Required	11.00	Not Required	No
	6	2437		Not Required	11.00	Not Required	No
	9	2452		Not Required	11.00	Not Required	No

2) Sensor on

Mode	Channel	Frequency (MHz)	Data Rate (Mbps)	Power Setting	Tune-up	Average Power (dBm)	SAR Test (Yes/No)
802.11b	1	2412	1	10.00	13.00	11.48	No
	6	2437		9.00	13.00	11.78	Yes
	11	2462		10.00	13.00	11.36	No
802.11g	1	2412	6	Not Required	12.00	Not Required	No
	6	2437		Not Required	12.00	Not Required	No
	11	2462		Not Required	12.00	Not Required	No
802.11n HT20	1	2412	6.5	Not Required	10.00	Not Required	No
	6	2437		Not Required	10.00	Not Required	No
	11	2462		Not Required	10.00	Not Required	No
802.11n HT40	3	2422	13.5	Not Required	9.00	Not Required	No
	6	2437		Not Required	9.00	Not Required	No
	9	2452		Not Required	9.00	Not Required	No

Note:

- 1) The Average conducted power of WiFi is measured with RMS detector.
- 2) Per KDB248227 D01, for WiFi 2.4GHz, the highest measured maximum output power Channel for DSSS modes (802.11b) was selected for SAR measurement. SAR for OFDM modes (2.4GHz 802.11g/n) was not required When the highest reported SAR for DSSS is adjusted by the ratio of OFDM modes (802.11g/n) to DSSS modes (802.11b) specified maximum output power and the adjusted SAR is ≤ 1.2 W/kg.

8.1.13 CONDUCTED POWER MEASUREMENTS OF BT

BT	Tune Up	Average Conducted Power (dBm)		
		CH0	CH39	CH78
DH5	11.00	8.82	9.11	8.77
2DH5	11.00	7.74	8.07	7.81
3DH5	11.00	7.68	7.98	7.77

BT	Tune Up	Average Conducted Power (dBm)		
		CH0	CH19	CH39
BLE	3.00	0.35	1.32	0.89

Note:

- 1) The conducted power of BT is measured with RMS detector.

8.2 SAR TEST RESULTS

General Notes:

- 1) Per KDB447498 D01, all measurement SAR results are scaled to the maximum tune-up tolerance limit to demonstrate compliant.
- 2) Per KDB447498 D01, testing of other required channels within the operating mode of a frequency band is not required when the reported 1-g or 10-g SAR for the mid-band or highest output power channel is ≤ 0.8 W/kg or 2.0 W/kg, for 1-g or 10-g respectively, when the transmission band is ≤ 100 MHz. When the maximum output power variation across the required test channels is $> \frac{1}{2}$ dB, instead of the middle channel, the highest output power channel must be used.
- 3) Per KDB865664 D01, for each frequency band, repeated SAR measurement is required only when the measured SAR is ≥ 0.8 W/kg; if the deviation among the repeated measurement is $\leq 20\%$, and the measured SAR < 1.45 W/kg, only one repeated measurement is required.
- 4) Per KDB941225 D06, the DUT Dimension is bigger than 9 cm x 5 cm, so 10mm is chosen as the test separation distance for Hotspot mode. When the antenna-to-edge distance is greater than 2.5cm, such position does not need to be tested.
- 5) Per KDB648474 D04, SAR is evaluated without a headset connected to the device. When the standalone reported body-worn SAR is ≤ 1.2 W/kg, no additional SAR evaluations using a headset are required.
- 6) Per KDB865664 D02, SAR plot is only required for the highest measured SAR in each exposure configuration, wireless mode and frequency band combination; Plots are also required when the measured SAR is > 1.5 W/kg, or > 7.0 W/kg for occupational exposure. The published RF exposure KDB procedures may require additional plots; for example, to support SAR to peak location separation ratio test exclusion and/or volume scan post-processing.

GSM Notes:

- 1) Per KDB648474 D04, body-worn accessory testing is typically associated with voice operations. Therefore, GSM voice was evaluated for body-worn SAR.
- 2) Per KDB941225 D01, SAR test reduction for GPRS and EDGE modes is determined by the source-based time-averaged output power specified for production units, including tune-up tolerance. The data mode with highest specified time-averaged output power should be tested for SAR compliance in the applicable exposure conditions. For modes with the same specified maximum output power and tolerance, the higher number time-slot configuration should be tested.

UMTS Notes:

Per KDB941225 D01, When the maximum output power and tune-up tolerance specified for production units in a secondary mode is $\leq \frac{1}{4}$ dB higher than the primary mode or when the highest reported SAR of the primary mode is scaled by the ratio of specified maximum output power and tune-up tolerance of secondary to primary mode and the adjusted SAR is ≤ 1.2 W/kg, SAR measurement is not required for the secondary mode.

LTE notes:

- 1) The LTE test configurations are determined according to KDB941225 D05 SAR for LTE Devices. The general test procedures used for SAR testing can be found in Section 7.1.3.
- 2) A-MPR was disabled for all SAR test by setting NS_01 on the base station simulator. SAR tests were performed with the same number of RB and RB offsets transmitting on all TTI frames (maximum TTI)

WLAN Notes:

1. For exposure conditions with multiple test positions, such as handset operating next to the ear, devices with hotspot mode, procedures for initial test position can be applied. Using the transmission mode determined by the DSSS procedure or initial test configuration, area scans are measured for all positions in an exposure condition. The test position with the highest extrapolated (peak) SAR is used as the initial test position. When the reported SAR of the initial test position is ≤ 0.4 W/kg, further SAR measurement is not required for the other (remaining) test positions. Otherwise, SAR is evaluated at the subsequent highest peak SAR position until the reported SAR result is ≤ 0.8 W/kg or all test positions are measured.
2. Justification for test configurations for WLAN per KDB Publication 248227 for 2.4GHZ WIFI single transmission chain operations, the highest measured maximum output power Channel for DSSS was selected for SAR measurement. SAR for OFDM modes(2.4GHz 802.11g/n) was not required due to the maximum allowed powers and the highest reported DSSS SAR. See Section 7.1.4 for more information.

8.2.1 SAR MEASUREMENT RESULT OF HEAD

1. Head SAR test results of GSM&UMTS

Test No.	Band	Mode	CH	Test Position	Battery	Tune up	Measure d	Drift (dB)	SAR Value (W/kg)1-g	Reported SAR	Test Sample
T01	GSM 850	GSM	190	Right Cheek	1	34	33.53	0.02	0.268	0.299	TRT-LX3
T02	GSM 850	GSM	190	Right Tilted	1	34	33.53	0.05	0.212	0.236	
T03	GSM 850	GSM	190	Left Cheek	1	34	33.53	0.01	0.256	0.285	
T04	GSM 850	GSM	190	Left Tilted	1	34	33.53	0.03	0.207	0.231	
T06	GSM 850	GSM	190	Right Cheek	2	34	33.53	-0.05	0.250	0.279	
T07	GSM 850	GSM	190	Right Cheek	3	34	33.53	-0.01	0.277	0.309	
T08	GSM 850	GSM	190	Right Cheek	3	34	33.53	0.03	0.235	0.262	TRT-L53
T10	GSM 1900	GSM	661	Right Cheek	1	30.5	29.61	0.03	0.085	0.104	TRT-LX3
T11	GSM 1900	GSM	661	Right Tilted	1	30.5	29.61	0.02	0.057	0.070	
T12	GSM 1900	GSM	661	Left Cheek	1	30.5	29.61	0.01	0.161	0.198	
T13	GSM 1900	GSM	661	Left Tilted	1	30.5	29.61	-0.03	0.051	0.063	
T17	GSM 1900	GSM	661	Left Cheek	1	30.5	29.61	0.03	0.216	0.265	TRT-L53
T18	GSM 1900	GSM	661	Left Cheek	2	30.5	29.61	-0.01	0.220	0.270	
T19	GSM 1900	GSM	661	Left Cheek	3	30.5	29.61	0.02	0.168	0.206	
T20	UMTS B2	RMC12.2K	9400	Right Cheek	1	23	22.41	0.01	0.143	0.164	TRT-LX3
T21	UMTS B2	RMC12.2K	9400	Right Tilted	1	23	22.41	0.02	0.096	0.110	
T22	UMTS B2	RMC12.2K	9400	Left Cheek	1	23	22.41	-0.03	0.262	0.300	
T23	UMTS B2	RMC12.2K	9400	Left Tilted	1	23	22.41	0.02	0.076	0.087	
T24	UMTS B2	RMC12.2K	9400	Left Cheek	1	23	22.41	0.05	0.377	0.432	TRT-L53
T25	UMTS B2	RMC12.2K	9400	Left Cheek	2	23	22.41	0.02	0.335	0.384	
T26	UMTS B2	RMC12.2K	9400	Left Cheek	3	23	22.41	0.01	0.319	0.365	
T30	UMTS B4	RMC12.2K	1413	Right Cheek	1	23	22.15	0.01	0.056	0.068	TRT-LX3
T31	UMTS B4	RMC12.2K	1413	Right Tilted	1	23	22.15	0.02	0.037	0.045	
T32	UMTS B4	RMC12.2K	1413	Left Cheek	1	23	22.15	-0.08	0.143	0.174	
T33	UMTS B4	RMC12.2K	1413	Left Tilted	1	23	22.15	0.02	0.044	0.054	
T35	UMTS B4	RMC12.2K	1413	Left Cheek	2	23	22.15	-0.08	0.161	0.196	
T36	UMTS B4	RMC12.2K	1413	Left Cheek	3	23	22.15	0.01	0.137	0.167	
T37	UMTS B4	RMC12.2K	1413	Left Cheek	2	23	22.15	-0.09	0.239	0.291	TRT-L53
T40	UMTS B5	RMC12.2K	4182	Right Cheek	1	24.5	23.56	0.02	0.247	0.307	TRT-LX3
T41	UMTS B5	RMC12.2K	4182	Right Tilted	1	24.5	23.56	0.01	0.211	0.262	
T42	UMTS B5	RMC12.2K	4182	Left Cheek	1	24.5	23.56	0.02	0.231	0.287	
T43	UMTS B5	RMC12.2K	4182	Left Tilted	1	24.5	23.56	-0.03	0.181	0.225	
T45	UMTS B5	RMC12.2K	4182	Right Cheek	2	24.5	23.56	0	0.245	0.304	
T46	UMTS B5	RMC12.2K	4182	Right Cheek	3	24.5	23.56	0.04	0.236	0.293	
T47	UMTS B5	RMC12.2K	4182	Right Cheek	1	24.5	23.56	0.01	0.236	0.293	TRT-L53

2. Head SAR test results of LTE

Test No.	Band	Mode	CH	RB	Offset	Test Position	Battery	Tune up	Measured	Drift(dB)	SAR Value (W/kg)1-g	Reported SAR	Test Sample
T200	LTE B2	QPSK20M	19100	1	50	Right Cheek	1	23	22.6	0.02	0.148	0.162	TRT-LX3
T201	LTE B2	QPSK20M	19100	1	50	Right Tilted	1	23	22.6	0.03	0.101	0.111	
T202	LTE B2	QPSK20M	19100	1	50	Left Cheek	1	23	22.6	0.01	0.248	0.272	
T203	LTE B2	QPSK20M	19100	1	50	Left Tilted	1	23	22.6	-0.06	0.076	0.083	
T204	LTE B2	QPSK20M	18900	50	50	Right Cheek	1	22	21.43	0.02	0.114	0.130	
T205	LTE B2	QPSK20M	18900	50	50	Right Tilted	1	22	21.43	-0.03	0.083	0.095	
T206	LTE B2	QPSK20M	18900	50	50	Left Cheek	1	22	21.43	0.01	0.227	0.259	
T207	LTE B2	QPSK20M	18900	50	50	Left Tilted	1	22	21.43	0.01	0.071	0.081	
T211	LTE B2	QPSK20M	19100	1	50	Left Cheek	1	23	22.6	0.07	0.426	0.467	TRT-L53
T212	LTE B2	QPSK20M	19100	1	50	Left Cheek	2	23	22.6	0.02	0.387	0.424	
T213	LTE B2	QPSK20M	19100	1	50	Left Cheek	3	23	22.6	0.01	0.395	0.433	
T220	LTE B4	QPSK20M	20175	1	0	Right Cheek	1	23	22.22	0.02	0.063	0.075	TRT-LX3
T221	LTE B4	QPSK20M	20175	1	0	Right Tilted	1	23	22.22	0.03	0.047	0.056	
T222	LTE B4	QPSK20M	20175	1	0	Left Cheek	1	23	22.22	0.01	0.157	0.188	
T223	LTE B4	QPSK20M	20175	1	0	Left Tilted	1	23	22.22	-0.03	0.058	0.069	
T224	LTE B4	QPSK20M	20300	50	0	Right Cheek	1	22	21.26	0.06	0.056	0.066	
T225	LTE B4	QPSK20M	20300	50	0	Right Tilted	1	22	21.26	0.07	0.048	0.057	
T226	LTE B4	QPSK20M	20300	50	0	Left Cheek	1	22	21.26	-0.01	0.149	0.177	
T227	LTE B4	QPSK20M	20300	50	0	Left Tilted	1	22	21.26	0.02	0.052	0.062	
T231	LTE B4	QPSK20M	20175	1	0	Left Cheek	1	23	22.22	0.02	0.271	0.324	TRT-L53
T232	LTE B4	QPSK20M	20175	1	0	Left Cheek	2	23	22.22	0.07	0.293	0.351	
T233	LTE B4	QPSK20M	20175	1	0	Left Cheek	3	23	22.22	-0.01	0.232	0.278	
T240	LTE B5	QPSK10M	20450	1	24	Right Cheek	1	23.5	23.37	0.01	0.133	0.137	TRT-LX3
T241	LTE B5	QPSK10M	20450	1	24	Right Tilted	1	23.5	23.37	0.02	0.115	0.118	
T242	LTE B5	QPSK10M	20450	1	24	Left Cheek	1	23.5	23.37	0.06	0.135	0.139	
T243	LTE B5	QPSK10M	20450	1	24	Left Tilted	1	23.5	23.37	-0.02	0.121	0.125	
T244	LTE B5	QPSK10M	20450	25	0	Right Cheek	1	22.5	22.01	0.05	0.116	0.130	
T245	LTE B5	QPSK10M	20450	25	0	Right Tilted	1	22.5	22.01	-0.03	0.090	0.101	
T246	LTE B5	QPSK10M	20450	25	0	Left Cheek	1	22.5	22.01	0.01	0.110	0.123	
T247	LTE B5	QPSK10M	20450	25	0	Left Tilted	1	22.5	22.01	-0.08	0.093	0.104	
T251	LTE B5	QPSK10M	20450	1	24	Left Cheek	1	23.5	23.37	-0.05	0.252	0.260	TRT-L53
T252	LTE B5	QPSK10M	20450	1	24	Left Cheek	2	23.5	23.37	0.01	0.236	0.243	
T253	LTE B5	QPSK10M	20450	1	24	Left Cheek	3	23.5	23.37	-0.03	0.219	0.226	
T260	LTE B7	QPSK20M	21350	1	50	Right Cheek	1	22.5	22.37	0.03	0.153	0.158	TRT-LX3
T261	LTE B7	QPSK20M	21350	1	50	Right Tilted	1	22.5	22.37	0.05	0.028	0.029	
T262	LTE B7	QPSK20M	21350	1	50	Left Cheek	1	22.5	22.37	-0.06	0.075	0.077	
T263	LTE B7	QPSK20M	21350	1	50	Left Tilted	1	22.5	22.37	0.01	0.042	0.043	
T264	LTE B7	QPSK20M	21100	50	0	Right Cheek	1	21.5	21.26	-0.02	0.133	0.141	
T265	LTE B7	QPSK20M	21100	50	0	Right Tilted	1	21.5	21.26	-0.06	0.023	0.024	
T266	LTE B7	QPSK20M	21100	50	0	Left Cheek	1	21.5	21.26	0.03	0.050	0.053	
T267	LTE B7	QPSK20M	21100	50	0	Left Tilted	1	21.5	21.26	0.01	0.035	0.037	
T271	LTE B7	QPSK20M	21350	1	50	Right Cheek	1	22.5	22.37	0.03	0.206	0.212	TRT-L53

T272	LTE B7	QPSK20M	21350	1	50	Right Cheek	2	22.5	22.37	0.02	0.182	0.188	TRT-L53
T273	LTE B7	QPSK20M	21350	1	50	Right Cheek	3	22.5	22.37	-0.09	0.217	0.224	
T520	LTE B12	QPSK10M	23095	1	24	Right Cheek	1	23.5	22.95	0.05	0.138	0.157	
T521	LTE B12	QPSK10M	23095	1	24	Right Tilted	1	23.5	22.95	0.03	0.108	0.123	
T522	LTE B12	QPSK10M	23095	1	24	Left Cheek	1	23.5	22.95	-0.04	0.162	0.184	
T523	LTE B12	QPSK10M	23095	1	24	Left Tilted	1	23.5	22.95	0.08	0.114	0.129	
T524	LTE B12	QPSK10M	23130	25	0	Right Cheek	1	22.5	21.81	0.01	0.115	0.135	
T525	LTE B12	QPSK10M	23130	25	0	Right Tilted	1	22.5	21.81	0.03	0.076	0.089	
T526	LTE B12	QPSK10M	23130	25	0	Left Cheek	1	22.5	21.81	0.02	0.088	0.103	
T527	LTE B12	QPSK10M	23130	25	0	Left Tilted	1	22.5	21.81	-0.01	0.059	0.069	
T528	LTE B12	QPSK10M	23095	1	24	Left Cheek	2	23.5	22.95	-0.05	0.170	0.193	
T529	LTE B12	QPSK10M	23095	1	24	Left Cheek	3	23.5	22.95	0.02	0.149	0.169	
T520	LTE B12	QPSK10M	23095	1	24	Right Cheek	1	23.5	22.95	0.05	0.138	0.157	
T521	LTE B12	QPSK10M	23095	1	24	Right Tilted	1	23.5	22.95	0.03	0.108	0.123	

3. Head SAR test results of WIFI

Test No.	Band	CH	Test Position	Battery	Data Rate	Power Setting	Tune up	Measured	Drift(dB)	SAR Value (W/kg)1-g	Reported SAR	Test Sample
T440	802.11b	6	Right Cheek	1	1	9	13	11.78	0.02	0.099	0.131	TRT-LX3
T441	802.11b	6	Right Tilted	1	1	9	13	11.78	-0.05	0.093	0.123	
T442	802.11b	6	Left Cheek	1	1	9	13	11.78	0.05	0.188	0.249	
T443	802.11b	6	Left Tilted	1	1	9	13	11.78	0.02	0.182	0.241	
T444	802.11b	6	Left Cheek	2	1	9	13	11.78	0.03	0.181	0.240	
T445	802.11b	6	Left Cheek	3	1	9	13	11.78	0.05	0.200	0.265	
T446	802.11b	6	Left Cheek	3	1	9	13	11.78	-0.02	0.262	0.347	TRT-L53

8.2.2 SAR MEASUREMENT RESULT OF BODY-WORN

1. Body-worn SAR test results of GSM&UMTS

Test No.	Band	Mode	CH	Test Position (with 15mm)	SIM	Battery	Tune up	Measure d	Drift(d B)	SAR Value (W/kg)1-g	Reporte d SAR	Test Sample
T50	GSM 850	GSM	190	Front Face	1	1	34	33.53	0.00	0.358	0.399	TRT-LX3
T51	GSM 850	GSM	190	Rear Face	1	1	34	33.53	0.01	0.399	0.445	
T53	GSM 850	GSM	190	Rear Face	1	2	34	33.53	0.02	0.337	0.376	
T54	GSM 850	GSM	190	Rear Face	1	3	34	33.53	-0.02	0.440	0.490	
T55	GSM 850	GSM	190	Rear Face	1	3	34	33.53	0.02	0.391	0.436	TRT-L53
T80	GSM 1900	GSM	661	Front Face	1	1	30.5	29.61	-0.01	0.233	0.286	TRT-LX3
T81	GSM 1900	GSM	661	Rear Face	1	1	30.5	29.61	0.03	0.199	0.244	
T83	GSM 1900	GSM	661	Front Face	1	2	30.5	29.61	0.01	0.197	0.242	
T84	GSM 1900	GSM	661	Front Face	1	3	30.5	29.61	0.02	0.224	0.275	
T85	GSM 1900	GSM	661	Front Face	1	1	30.5	29.61	0.01	0.230	0.282	TRT-L53
T110	UMTS B2	RMC12.2K	9400	Front Face	1	1	23	22.41	0.02	0.377	0.432	TRT-LX3
T111	UMTS B2	RMC12.2K	9400	Rear Face	1	1	23	22.41	-0.02	0.317	0.363	
T113	UMTS B2	RMC12.2K	9400	Front Face	1	2	23	22.41	0.01	0.372	0.426	
T114	UMTS B2	RMC12.2K	9400	Front Face	1	3	23	22.41	0.03	0.372	0.426	
T115	UMTS B2	RMC12.2K	9400	Front Face	1	1	23	22.41	0.04	0.358	0.410	TRT-L53
T139	UMTS B4	RMC12.2K	1413	Front Face	1	1	23	22.11	0.05	0.537	0.659	TRT-LX3
T140	UMTS B4	RMC12.2K	1413	Rear Face	1	1	23	22.11	0.07	0.396	0.486	
T141	UMTS B4	RMC12.2K	1413	Front Face	1	1	23	22.11	0.01	0.533	0.654	
T143	UMTS B4	RMC12.2K	1413	Front Face	1	2	23	22.11	0.02	0.536	0.658	
T144	UMTS B4	RMC12.2K	1413	Front Face	1	3	23	22.11	-0.03	0.508	0.624	TRT-L53
T145	UMTS B4	RMC12.2K	1413	Front Face	1	1	23	22.11	-0.02	0.678	0.832	
T170	UMTS B5	RMC12.2K	4182	Front Face	1	1	24.5	23.56	0.03	0.369	0.458	TRT-LX3
T171	UMTS B5	RMC12.2K	4182	Rear Face	1	1	24.5	23.56	0.02	0.408	0.507	
T173	UMTS B5	RMC12.2K	4182	Rear Face	1	2	24.5	23.56	0.02	0.388	0.482	
T174	UMTS B5	RMC12.2K	4182	Rear Face	1	3	24.5	23.56	-0.02	0.319	0.396	
T175	UMTS B5	RMC12.2K	4182	Rear Face	1	1	24.5	23.56	0.01	0.403	0.500	TRT-L53

2. Body-worn SAR test results of LTE

Test No.	Band	Mode	CH	RB	Offset	Test Position (with 15mm)	Battery	Tuning	Measured	Drift(dB)	SAR Value (W/kg)1-g	Reported SAR	Test Sample
T280	LTE B2	QPSK20M	19100	1	50	Front Face	1	23	22.6	0.02	0.351	0.385	TRT-LX3
T281	LTE B2	QPSK20M	19100	1	50	Rear Face	1	23	22.6	0.01	0.243	0.266	
T282	LTE B2	QPSK20M	18900	50	50	Front Face	1	22	21.43	0.02	0.296	0.338	
T283	LTE B2	QPSK20M	18900	50	50	Rear Face	1	22	21.43	-0.03	0.176	0.201	
T285	LTE B2	QPSK20M	19100	1	50	Front Face	2	23	22.6	0.01	0.297	0.326	
T286	LTE B2	QPSK20M	19100	1	50	Front Face	3	23	22.6	0.03	0.325	0.356	
T287	LTE B2	QPSK20M	19100	1	50	Front Face	1	23	22.6	0.04	0.312	0.342	TRT-L53
T320	LTE B4	QPSK20M	20175	1	0	Front Face	1	23	22.22	0.04	0.605	0.724	TRT-LX3
T321	LTE B4	QPSK20M	20175	1	0	Rear Face	1	23	22.22	0.09	0.427	0.511	
T322	LTE B4	QPSK20M	20300	50	0	Front Face	1	22	21.26	0.03	0.482	0.572	
T323	LTE B4	QPSK20M	20300	50	0	Rear Face	1	22	21.26	0.02	0.267	0.317	
T327	LTE B4	QPSK20M	20175	1	0	Front Face	1	23	22.22	-0.02	0.552	0.661	TRT-L53
T328	LTE B4	QPSK20M	20175	1	0	Front Face	2	23	22.22	0.02	0.505	0.604	
T329	LTE B4	QPSK20M	20175	1	0	Front Face	3	23	22.22	0.04	0.591	0.707	
T380	LTE B5	QPSK10M	20450	1	24	Front Face	1	23.5	23.37	0.02	0.213	0.219	TRT-LX3
T381	LTE B5	QPSK10M	20450	1	24	Rear Face	1	23.5	23.37	0.03	0.256	0.264	
T382	LTE B5	QPSK10M	20450	25	0	Front Face	1	22.5	22.01	-0.01	0.176	0.197	
T383	LTE B5	QPSK10M	20450	25	0	Rear Face	1	22.5	22.01	0.05	0.211	0.236	
T385	LTE B5	QPSK10M	20450	1	24	Rear Face	2	23.5	23.37	0.01	0.228	0.235	
T386	LTE B5	QPSK10M	20450	1	24	Rear Face	3	23.5	23.37	-0.04	0.288	0.297	
T387	LTE B5	QPSK10M	20450	1	24	Rear Face	3	23.5	23.37	-0.03	0.244	0.251	TRT-L53
T410	LTE B7	QPKS20M	21350	1	50	Front Face	1	22.5	22.37	0.08	0.378	0.389	TRT-LX3
T411	LTE B7	QPKS20M	21350	1	50	Rear Face	1	22.5	22.37	0.01	0.372	0.383	
T412	LTE B7	QPKS20M	21100	50	0	Front Face	1	21.5	21.26	0.06	0.358	0.378	
T413	LTE B7	QPKS20M	21100	50	0	Rear Face	1	21.5	21.26	0.04	0.265	0.280	
T417	LTE B7	QPKS20M	21350	1	50	Front Face	1	22.5	22.37	0.04	0.316	0.326	TRT-L53
T418	LTE B7	QPKS20M	21350	1	50	Front Face	2	22.5	22.37	-0.04	0.375	0.386	
T419	LTE B7	QPKS20M	21350	1	50	Front Face	3	22.5	22.37	0.02	0.346	0.357	
T540	LTE B12	QPSK10M	23095	1	24	Front Face	1	23.5	22.95	0.03	0.155	0.176	TRT-LX3
T541	LTE B12	QPSK10M	23095	1	24	Rear Face	1	23.5	22.95	0.01	0.210	0.239	
T542	LTE B12	QPSK10M	23130	25	0	Front Face	1	22.5	21.81	-0.05	0.157	0.184	
T543	LTE B12	QPSK10M	23130	25	0	Rear Face	1	22.5	21.81	0.06	0.158	0.185	
T544	LTE B12	QPSK10M	23095	1	24	Rear Face	2	23.5	22.95	-0.02	0.208	0.236	
T545	LTE B12	QPSK10M	23095	1	24	Rear Face	3	23.5	22.95	0.03	0.232	0.263	

3. Body-worn SAR test results of WIFI

Test No.	Band	CH	Test Position (with 15mm)	Battery	Data Rate	Power Setting	Tune up	Measured	Drift(dB)	SAR Value (W/kg)1-g	Reported SAR	Test Sample
T450	802.11b	6	Front Face	1	1	16	17.8	17.31	-0.04	0.115	0.129	TRT-LX3
T451	802.11b	6	Rear Face	1	1	16	17.8	17.31	0.09	0.063	0.070	
T452	802.11b	6	Front Face	2	1	16	17.8	17.31	0.04	0.088	0.098	
T453	802.11b	6	Front Face	2	1	16	17.8	17.31	-0.06	0.081	0.091	
T454	802.11b	6	Front Face	1	1	15	17.8	17.31	-0.06	0.112	0.125	TRT-L53

8.2.3 SAR MEASUREMENT RESULT OF HOTSPOT

1. Hotspot SAR test results of GSM&UMTS

Test No.	Band	Mode	CH	Test Position (with 10mm)	Battery	Tune up	Measured	Drift(dB)	SAR Value (W/kg)1-g	Reported SAR	Test Sample
T60	GSM 850	GPRS 2TX	190	Front Face	1	31	30.06	0.02	0.325	0.404	TRT-LX3
T61	GSM 850	GPRS 2TX	190	Rear Face	1	31	30.06	0.02	0.312	0.387	
T62	GSM 850	GPRS 2TX	190	Left Side	1	31	30.06	-0.03	0.213	0.264	
T63	GSM 850	GPRS 2TX	190	Right Side	1	31	30.06	0.01	0.290	0.360	
T64	GSM 850	GPRS 2TX	190	Bottom Side	1	31	30.06	0.05	0.079	0.098	
T66	GSM 850	GPRS 2TX	190	Front Face	2	31	30.06	-0.08	0.324	0.402	
T67	GSM 850	GPRS 2TX	190	Front Face	3	31	30.06	-0.07	0.340	0.422	
T68	GSM 850	GPRS2TX	190	Front Face	3	31	30.06	0.03	0.288	0.358	TRT-L53
T90	GSM 1900	GPRS3TX	661	Front Face	1	23	22.37	0.02	0.284	0.328	TRT-LX3
T91	GSM 1900	GPRS3TX	661	Rear Face	1	23	22.37	0.02	0.176	0.203	
T92	GSM 1900	GPRS3TX	661	Left Side	1	23	22.37	0.01	0.090	0.104	
T93	GSM 1900	GPRS3TX	661	Right Side	1	23	22.37	0.06	0.020	0.023	
T94	GSM 1900	GPRS3TX	661	Bottom Side	1	23	22.37	-0.03	0.265	0.306	
T98	GSM 1900	GPRS3TX	661	Front Face	1	23	22.37	0.01	0.264	0.305	TRT-L53
T99	GSM 1900	GPRS3TX	661	Front Face	2	23	22.37	-0.03	0.292	0.338	
T100	GSM 1900	GPRS3TX	661	Front Face	3	23	22.37	0.06	0.246	0.284	
T120	UMTS B2	RMC12.2K	9400	Front Face	1	21	20.47	0.02	0.618	0.698	TRT-LX3
T121	UMTS B2	RMC12.2K	9400	Rear Face	1	21	20.47	0.03	0.457	0.516	
T122	UMTS B2	RMC12.2K	9400	Left Side	1	21	20.47	0.08	0.233	0.263	
T123	UMTS B2	RMC12.2K	9400	Right Side	1	21	20.47	-0.03	0.023	0.026	
T124	UMTS B2	RMC12.2K	9400	Bottom Side	1	21	20.47	-0.03	0.635	0.717	
T128	UMTS B2	RMC12.2K	9400	Bottom Side	1	21	20.47	-0.05	0.534	0.603	TRT-L53
T129	UMTS B2	RMC12.2K	9400	Bottom Side	2	21	20.47	-0.05	0.439	0.496	
T130	UMTS B2	RMC12.2K	9400	Bottom Side	3	21	20.47	-0.03	0.564	0.637	
T149	UMTS B4	RMC12.2K	1413	Front Face	1	19	18.17	0.04	0.551	0.667	TRT-LX3
T150	UMTS B4	RMC12.2K	1413	Rear Face	1	19	18.17	0.03	0.363	0.439	
T151	UMTS B4	RMC12.2K	1413	Left Side	1	19	18.17	0.02	0.083	0.100	
T152	UMTS B4	RMC12.2K	1413	Right Side	1	19	18.17	0.00	0.000	0.000	
T153	UMTS B4	RMC12.2K	1413	Bottom Side	1	19	18.17	-0.09	0.756	0.915	
T154	UMTS B4	RMC12.2K	1312	Bottom Side	1	19	17.96	0.03	0.713	0.906	
T155	UMTS B4	RMC12.2K	1513	Bottom Side	1	19	17.96	-0.01	0.629	0.799	
T157	UMTS B4	RMC12.2K	1413	Bottom Side	2	19	18.17	0.09	0.746	0.903	
T158	UMTS B4	RMC12.2K	1413	Bottom Side	3	19	18.17	0.02	0.753	0.912	
T159	UMTS B4	RMC12.2K	1413	Bottom Side (1st repeated)	1	19	18.17	0.01	0.753	0.912	
T160	UMTS B4	RMC12.2K	1413	Bottom Side	1	19	18.17	0.05	0.733	0.887	TRT-L53
T180	UMTS B5	RMC12.2K	4182	Front Face	1	24.5	23.56	-0.02	0.392	0.487	TRT-LX3
T181	UMTS B5	RMC12.2K	4182	Rear Face	1	24.5	23.56	0.06	0.425	0.528	
T182	UMTS B5	RMC12.2K	4182	Left Side	1	24.5	23.56	0.03	0.331	0.411	
T183	UMTS B5	RMC12.2K	4182	Right Side	1	24.5	23.56	0.01	0.371	0.461	
T184	UMTS B5	RMC12.2K	4182	Bottom Side	1	24.5	23.56	0.01	0.123	0.153	
T186	UMTS B5	RMC12.2K	4182	Rear Face	2	24.5	23.56	-0.03	0.333	0.413	
T187	UMTS B5	RMC12.2K	4182	Rear Face	3	24.5	23.56	0.01	0.355	0.441	

T188	UMTS B5	RMC12.2K	4182	Rear Face	1	24.5	23.56	-0.05	0.419	0.520	TRT-L53
------	---------	----------	------	-----------	---	------	-------	-------	-------	-------	---------

Per KDB648474D04, when hotspot mode applies, product specific 10-g SAR is required only for the surfaces and edges with hotspot mode 1-g reported SAR > 1.2 W/kg; however, when power reduction applies to hotspot mode the measured SAR must be scaled to the maximum output power, including tolerance, allowed for phablet modes to compare with the 1.2 W/kg SAR test reduction threshold:

Test No.	Band	Mode	CH	Test Position (with 10mm)	Battery	Tune up (Full Power)	Measured	Drift (dB)	SAR Value (W/kg)1-g	Scaled SAR _{1g} (W/kg)	Test Sample	product specific 10-g SAR Exclusion
T60	GSM 850	GPRS 2TX	190	Front Face	1	31	30.06	0.02	0.325	0.404	TRT-LX3	Yes
T61	GSM 850	GPRS 2TX	190	Rear Face	1	31	30.06	0.02	0.312	0.387		Yes
T62	GSM 850	GPRS 2TX	190	Left Side	1	31	30.06	-0.03	0.213	0.264		Yes
T63	GSM 850	GPRS 2TX	190	Right Side	1	31	30.06	0.01	0.290	0.360		Yes
T64	GSM 850	GPRS 2TX	190	Bottom Side	1	31	30.06	0.05	0.079	0.098		Yes
T66	GSM 850	GPRS 2TX	190	Front Face	2	31	30.06	-0.08	0.324	0.402		Yes
T67	GSM 850	GPRS 2TX	190	Front Face	3	31	30.06	-0.07	0.340	0.422		Yes
T68	GSM 850	GPRS2TX	190	Front Face	3	31	30.06	0.03	0.288	0.358	TRT-L53	Yes
T90	GSM 1900	GPRS3TX	661	Front Face	1	27	22.37	0.02	0.284	0.825	TRT-LX3	Yes
T91	GSM 1900	GPRS3TX	661	Rear Face	1	27	22.37	0.02	0.176	0.511		Yes
T92	GSM 1900	GPRS3TX	661	Left Side	1	27	22.37	0.01	0.090	0.261		Yes
T93	GSM 1900	GPRS3TX	661	Right Side	1	27	22.37	0.06	0.020	0.058		Yes
T94	GSM 1900	GPRS3TX	661	Bottom Side	1	27	22.37	-0.03	0.265	0.770		Yes
T98	GSM 1900	GPRS3TX	661	Front Face	1	27	22.37	0.01	0.264	0.767	TRT-L53	Yes
T99	GSM 1900	GPRS3TX	661	Front Face	2	27	22.37	-0.03	0.292	0.848		Yes
T100	GSM 1900	GPRS3TX	661	Front Face	3	27	22.37	0.06	0.246	0.714		Yes
T120	UMTS B2	RMC12.2K	9400	Front Face	1	23	20.47	0.02	0.618	1.107	TRT-LX3	Yes
T121	UMTS B2	RMC12.2K	9400	Rear Face	1	23	20.47	0.03	0.457	0.818		Yes
T122	UMTS B2	RMC12.2K	9400	Left Side	1	23	20.47	0.08	0.233	0.417		Yes
T123	UMTS B2	RMC12.2K	9400	Right Side	1	23	20.47	-0.03	0.023	0.041		Yes
T124	UMTS B2	RMC12.2K	9400	Bottom Side	1	23	20.47	-0.03	0.635	1.137		Yes
T128	UMTS B2	RMC12.2K	9400	Bottom Side	1	23	20.47	-0.05	0.534	0.956	TRT-L53	Yes
T129	UMTS B2	RMC12.2K	9400	Bottom Side	2	23	20.47	-0.05	0.439	0.786		Yes
T130	UMTS B2	RMC12.2K	9400	Bottom Side	3	23	20.47	-0.03	0.564	1.010		Yes
T149	UMTS B4	RMC12.2K	1413	Front Face	1	23	18.17	0.04	0.551	1.676		No
T150	UMTS B4	RMC12.2K	1413	Rear Face	1	23	18.17	0.03	0.363	1.104	TRT-LX3	Yes
T151	UMTS B4	RMC12.2K	1413	Left Side	1	23	18.17	0.02	0.083	0.252		Yes
T152	UMTS B4	RMC12.2K	1413	Right Side	1	23	18.17	0.00	0.000	0.000		Yes
T153	UMTS B4	RMC12.2K	1413	Bottom Side	1	23	18.17	-0.09	0.756	2.299		No
T154	UMTS B4	RMC12.2K	1312	Bottom Side	1	23	17.96	0.03	0.713	2.276		No
T155	UMTS B4	RMC12.2K	1513	Bottom Side	1	23	17.96	-0.01	0.629	2.007		No
T157	UMTS B4	RMC12.2K	1413	Bottom Side	2	23	18.17	0.09	0.746	2.269		No
T158	UMTS B4	RMC12.2K	1413	Bottom Side	3	23	18.17	0.02	0.753	2.290		No
T159	UMTS B4	RMC12.2K	1413	Bottom Side (1st Repeat)	1	23	18.17	0.01	0.753	2.290		No
T160	UMTS B4	RMC12.2K	1413	Bottom Side	1	23	18.17	0.05	0.733	2.229		TRT-L53
T180	UMTS B5	RMC12.2K	4182	Front Face	1	24.5	23.56	-0.02	0.392	0.487	TRT-LX3	Yes
T181	UMTS B5	RMC12.2K	4182	Rear Face	1	24.5	23.56	0.06	0.425	0.528		Yes

T182	UMTS B5	RMC12.2K	4182	Left Side	1	24.5	23.56	0.03	0.331	0.411		Yes
T183	UMTS B5	RMC12.2K	4182	Right Side	1	24.5	23.56	0.01	0.371	0.461		Yes
T184	UMTS B5	RMC12.2K	4182	Bottom Side	1	24.5	23.56	0.01	0.123	0.153		Yes
T185	UMTS B5	RMC12.2K	4182	Rear Face	1	24.5	23.56	0.08	0.368	0.457		Yes
T186	UMTS B5	RMC12.2K	4182	Rear Face	2	24.5	23.56	-0.03	0.333	0.413		Yes
T187	UMTS B5	RMC12.2K	4182	Rear Face	3	24.5	23.56	0.01	0.355	0.441		Yes
T188	UMTS B5	RMC12.2K	4182	Rear Face	1	24.5	23.56	-0.05	0.419	0.520		TRT-L53

1.1 product specific 10-g SAR test of GSM&UMTS

Test No.	Band	Mode	CH	Test Position (with 0mm)	Earphone	Battery	Tune up	Measured	Drift(dB)	SAR Value (W/kg)10-g	Reported SAR10-g	Test Sample
T161	UMTS B4	RMC12.2K	1413	Front Face	1	1	23	22.11	0.06	2.190	2.688	TRT-LX3
T162	UMTS B4	RMC12.2K	1413	Bottom Side	1	1	23	22.11	-0.01	1.320	1.620	
T163	UMTS B4	RMC12.2K	1312	Front Face	1	1	23	21.93	0.05	2.010	2.572	
T164	UMTS B4	RMC12.2K	1513	Front Face	1	1	23	21.9	0.06	1.970	2.538	
T166	UMTS B4	RMC12.2K	1413	Front Face	1	2	23	22.11	0.04	2.170	2.664	
T167	UMTS B4	RMC12.2K	1413	Front Face	1	3	23	22.11	0.03	2.130	2.614	
T169	UMTS B4	RMC12.2K	1413	Front Face	-	1	23	22.11	-0.09	2.830	3.474	TRT-L53
T580	UMTS B4	RMC12.2K	1413	Front Face	1	1	23	22.11	0.01	2.760	3.388	
T581	UMTS B4	RMC12.2K	1413	Front Face	2	1	23	22.11	0.00	2.780	3.412	
T582	UMTS B4	RMC12.2K	1413	Front Face	3	1	23	22.11	0.01	2.880	3.535	
T583	UMTS B4	RMC12.2K	1413	Front Face	4	1	23	22.11	0.03	2.810	3.449	
T584	UMTS B4	RMC12.2K	1413	Front Face(1 st repeated)	3	1	23	22.11	-0.03	2.850	3.498	
T585	UMTS B4	RMC12.2K	1413	Front Face(with replaced holder)	3	1	23	22.11	-0.03	2.860	3.510	

2. Hotspot SAR test results of LTE

Test No.	Band	Mode	CH	RB	Offset	Test Position (with 10mm)	Battery	Tune up	Measured	Drift (dB)	SAR Value (W/kg)1-g	Reported SAR	Test Sample
T290	LTE B2	QPSK20M	19100	1	50	Front Face	1	19.5	19.06	0.06	0.484	0.536	TRT-LX3
T291	LTE B2	QPSK20M	19100	1	50	Rear Face	1	19.5	19.06	0.02	0.264	0.292	
T292	LTE B2	QPSK20M	19100	1	50	Left Side	1	19.5	19.06	0.01	0.174	0.193	
T293	LTE B2	QPSK20M	19100	1	50	Right Side	1	19.5	19.06	0.04	0.025	0.028	
T294	LTE B2	QPSK20M	19100	1	50	Bottom Side	1	19.5	19.06	-0.03	0.356	0.394	
T295	LTE B2	QPSK20M	18900	50	25	Front Face	1	19.5	19.02	-0.09	0.470	0.525	
T296	LTE B2	QPSK20M	18900	50	25	Rear Face	1	19.5	19.02	0.01	0.292	0.326	
T297	LTE B2	QPSK20M	18900	50	25	Left Side	1	19.5	19.02	0.02	0.169	0.189	
T298	LTE B2	QPSK20M	18900	50	25	Right Side	1	19.5	19.02	0.05	0.021	0.023	
T299	LTE B2	QPSK20M	18900	50	25	Bottom Side	1	19.5	19.02	-0.06	0.479	0.535	
T301	LTE B2	QPSK20M	19100	1	50	Front Face	2	19.5	19.06	0.08	0.453	0.501	
T302	LTE B2	QPSK20M	19100	1	50	Front Face	3	19.5	19.06	-0.09	0.480	0.531	
T303	LTE B2	QPSK20M	19100	1	50	Front Face	1	19.5	19.06	-0.03	0.425	0.470	TRT-L53
T340	LTE B4	QPSK20M	20300	1	99	Front Face	1	17.5	16.66	0.09	0.315	0.382	TRT-LX3
T341	LTE B4	QPSK20M	20300	1	99	Rear Face	1	17.5	16.66	-0.05	0.184	0.223	
T342	LTE B4	QPSK20M	20300	1	99	Left Side	1	17.5	16.66	0.02	0.053	0.064	
T343	LTE B4	QPSK20M	20300	1	99	Right Side	1	17.5	16.66	0.00	0.000	0.000	
T344	LTE B4	QPSK20M	20300	1	99	Bottom Side	1	17.5	16.66	0.06	0.489	0.593	
T345	LTE B4	QPSK20M	20050	50	50	Front Face	1	17.5	16.56	0.04	0.465	0.577	
T346	LTE B4	QPSK20M	20050	50	50	Rear Face	1	17.5	16.56	0.05	0.225	0.279	
T347	LTE B4	QPSK20M	20050	50	50	Left Side	1	17.5	16.56	-0.01	0.045	0.056	
T348	LTE B4	QPSK20M	20050	50	50	Right Side	1	17.5	16.56	0.00	0.000	0.000	
T349	LTE B4	QPSK20M	20050	50	50	Bottom Side	1	17.5	16.56	-0.05	0.525	0.652	
T351	LTE B4	QPSK20M	20050	50	50	Bottom Side	2	17.5	16.56	0.04	0.441	0.548	
T352	LTE B4	QPSK20M	20050	50	50	Bottom Side	3	17.5	16.56	0.03	0.398	0.494	
T353	LTE B4	QPSK20M	20050	50	50	Bottom Side	1	17.5	16.53	0.02	0.454	0.568	TRT-L53
T390	LTE B5	QPSK10M	20525	1	24	Front Face	1	23.5	23.37	0.03	0.272	0.280	TRT-LX3
T391	LTE B5	QPSK10M	20525	1	24	Rear Face	1	23.5	23.37	0.01	0.323	0.333	
T392	LTE B5	QPSK10M	20525	1	24	Left Side	1	23.5	23.37	-0.03	0.187	0.193	
T393	LTE B5	QPSK10M	20525	1	24	Right Side	1	23.5	23.37	0.01	0.251	0.259	
T394	LTE B5	QPSK10M	20525	1	24	Bottom Side	1	23.5	23.37	0.02	0.062	0.064	
T395	LTE B5	QPSK10M	20525	25	0	Front Face	1	22.5	22.01	0.05	0.213	0.238	
T396	LTE B5	QPSK10M	20525	25	0	Rear Face	1	22.5	22.01	0.02	0.259	0.290	
T397	LTE B5	QPSK10M	20525	25	0	Left Side	1	22.5	22.01	-0.03	0.141	0.158	
T398	LTE B5	QPSK10M	20525	25	0	Right Side	1	22.5	22.01	0.01	0.193	0.216	
T399	LTE B5	QPSK10M	20525	25	0	Bottom Side	1	22.5	22.01	-0.02	0.054	0.060	
T401	LTE B5	QPSK10M	20525	1	24	Rear Face	2	23.5	23.37	-0.05	0.302	0.311	
T402	LTE B5	QPSK10M	20525	1	24	Rear Face	3	23.5	23.37	0.08	0.296	0.305	
T403	LTE B5	QPSK10M	20525	1	24	Rear Face	1	23.5	23.37	0.03	0.315	0.325	TRT-L53
T420	LTE B7	QPSK20M	21350	1	50	Front Face	1	20.5	19.36	0.04	0.482	0.627	TRT-LX3

T421	LTE B7	QPSK20M	21350	1	50	Rear Face	1	20.5	19.36	0.01	0.314	0.408		
T422	LTE B7	QPSK20M	21350	1	50	Left Side	1	20.5	19.36	0.02	0.068	0.088		
T423	LTE B7	QPSK20M	21350	1	50	Right Side	1	20.5	19.36	-0.03	0.146	0.190		
T424	LTE B7	QPSK20M	21350	1	50	Bottom Side	1	20.5	19.36	0.06	0.245	0.319		
T425	LTE B7	QPSK20M	21100	50	0	Front Face	1	20.5	19.34	0.05	0.400	0.522		
T426	LTE B7	QPSK20M	21100	50	0	Rear Face	1	20.5	19.34	0.01	0.263	0.344		
T427	LTE B7	QPSK20M	21100	50	0	Left Side	1	20.5	19.34	-0.04	0.041	0.054		
T428	LTE B7	QPSK20M	21100	50	0	Right Side	1	20.5	19.34	-0.03	0.130	0.170		
T429	LTE B7	QPSK20M	21100	50	0	Bottom Side	1	20.5	19.34	0.01	0.253	0.330		
T431	LTE B7	QPSK20M	21350	1	50	Front Face	2	20.5	19.36	0.05	0.356	0.463		
T432	LTE B7	QPSK20M	21350	1	50	Front Face	3	20.5	19.36	0.06	0.432	0.562		
T433	LTE B7	QPSK20M	21350	1	50	Front Face	1	20.5	19.36	0.05	0.437	0.568		TRT-L53
T550	LTE B12	QPSK10M	23095	1	24	Front Face	1	23.5	22.95	0.03	0.230	0.261		TRT-L53
T551	LTE B12	QPSK10M	23095	1	24	Rear Face	1	23.5	22.95	0.02	0.235	0.267		
T552	LTE B12	QPSK10M	23095	1	24	Left Side	1	23.5	22.95	-0.06	0.198	0.225		
T553	LTE B12	QPSK10M	23095	1	24	Right Side	1	23.5	22.95	0.01	0.201	0.228		
T554	LTE B12	QPSK10M	23095	1	24	Bottom Side	1	23.5	22.95	0.02	0.035	0.040		
T555	LTE B12	QPSK10M	23130	25	0	Front Face	1	22.5	21.81	-0.05	0.172	0.202		
T556	LTE B12	QPSK10M	23130	25	0	Rear Face	1	22.5	21.81	0.03	0.180	0.211		
T557	LTE B12	QPSK10M	23130	25	0	Left Side	1	22.5	21.81	-0.06	0.156	0.183		
T558	LTE B12	QPSK10M	23130	25	0	Right Side	1	22.5	21.81	0.02	0.162	0.190		
T559	LTE B12	QPSK10M	23130	25	0	Bottom Side	1	22.5	21.81	-0.03	0.017	0.020		
T560	LTE B12	QPSK10M	23095	1	24	Rear Face	2	23.5	22.95	0.03	0.243	0.276		
T561	LTE B12	QPSK10M	23095	1	24	Rear Face	3	23.5	22.95	-0.09	0.248	0.282		

Per KDB648474D04, when hotspot mode applies, product specific 10-g SAR is required only for the surfaces and edges with hotspot mode 1-g reported SAR > 1.2 W/kg; however, when power reduction applies to hotspot mode the measured SAR must be scaled to the maximum output power, including tolerance, allowed for phablet modes to compare with the 1.2 W/kg SAR test reduction threshold:

Test No.	Band	Mode	CH	RB	Off set	Test Position (with 10mm)	Battery	Tune up	Measured	Drift (dB)	SAR Value (W/kg)1-g	Scaled SAR _{1g} (W/kg)	Test Sample	product specific 10-g SAR Exclusion
T290	LTE B2	QPSK20M	19100	1	50	Front Face	1	23	19.06	0.06	0.484	1.199	TRT-LX3	Yes
T291	LTE B2	QPSK20M	19100	1	50	Rear Face	1	23	19.06	0.02	0.264	0.654		Yes
T292	LTE B2	QPSK20M	19100	1	50	Left Side	1	23	19.06	0.01	0.174	0.431		Yes
T293	LTE B2	QPSK20M	19100	1	50	Right Side	1	23	19.06	0.04	0.025	0.062		Yes
T294	LTE B2	QPSK20M	19100	1	50	Bottom Side	1	23	19.06	-0.03	0.356	0.882		Yes
T295	LTE B2	QPSK20M	18900	50	25	Front Face	1	23	19.02	-0.09	0.470	1.175		Yes
T296	LTE B2	QPSK20M	18900	50	25	Rear Face	1	23	19.02	0.01	0.292	0.730		Yes
T297	LTE B2	QPSK20M	18900	50	25	Left Side	1	23	19.02	0.02	0.169	0.423		Yes

T298	LTE B2	QPSK20M	18900	50	25	Right Side	1	23	19.02	0.05	0.021	0.053		Yes
T299	LTE B2	QPSK20M	18900	50	25	Bottom Side	1	23	19.02	-0.06	0.479	1.198		Yes
T301	LTE B2	QPSK20M	19100	1	50	Front Face	2	23	19.06	0.08	0.453	1.122		Yes
T302	LTE B2	QPSK20M	19100	1	50	Front Face	3	23	19.06	-0.09	0.480	1.189		Yes
T303	LTE B2	QPSK20M	19100	1	50	Front Face	1	23	19.06	-0.03	0.425	1.053	TRT-L53	Yes
T340	LTE B4	QPSK20M	20300	1	99	Front Face	1	23	16.66	0.09	0.315	1.356		No
T341	LTE B4	QPSK20M	20300	1	99	Rear Face	1	23	16.66	-0.05	0.184	0.792		Yes
T342	LTE B4	QPSK20M	20300	1	99	Left Side	1	23	16.66	0.02	0.053	0.228		Yes
T343	LTE B4	QPSK20M	20300	1	99	Right Side	1	23	16.66	0	0.000	0.000		Yes
T344	LTE B4	QPSK20M	20300	1	99	Bottom Side	1	23	16.66	0.06	0.489	2.105		No
T345	LTE B4	QPSK20M	20050	50	50	Front Face	1	23	16.56	0.04	0.465	2.049		No
T346	LTE B4	QPSK20M	20050	50	50	Rear Face	1	23	16.56	0.05	0.225	0.991	TRT-LX3	Yes
T347	LTE B4	QPSK20M	20050	50	50	Left Side	1	23	16.56	-0.01	0.045	0.198		Yes
T348	LTE B4	QPSK20M	20050	50	50	Right Side	1	23	16.56	0	0.000	0.000		Yes
T349	LTE B4	QPSK20M	20050	50	50	Bottom Side	1	23	16.56	-0.05	0.525	2.313		No
T351	LTE B4	QPSK20M	20050	50	50	Bottom Side	2	23	16.56	0.04	0.441	1.943		No
T352	LTE B4	QPSK20M	20050	50	50	Bottom Side	3	23	16.56	0.03	0.398	1.753		No
T353	LTE B4	QPSK20M	20050	50	50	Bottom Side	1	23	16.53	0.02	0.454	2.014	TRT-L53	No
T390	LTE B5	QPSK10M	20525	1	24	Front Face	1	23.5	23.37	0.03	0.272	0.280		Yes
T391	LTE B5	QPSK10M	20525	1	24	Rear Face	1	23.5	23.37	0.01	0.323	0.333		Yes
T392	LTE B5	QPSK10M	20525	1	24	Left Side	1	23.5	23.37	-0.03	0.187	0.193		Yes
T393	LTE B5	QPSK10M	20525	1	24	Right Side	1	23.5	23.37	0.01	0.251	0.259		Yes
T394	LTE B5	QPSK10M	20525	1	24	Bottom Side	1	23.5	23.37	0.02	0.062	0.064		Yes
T395	LTE B5	QPSK10M	20525	25	0	Front Face	1	22.5	22.01	0.05	0.213	0.238	TRT-LX3	Yes
T396	LTE B5	QPSK10M	20525	25	0	Rear Face	1	22.5	22.01	0.02	0.259	0.290		Yes
T397	LTE B5	QPSK10M	20525	25	0	Left Side	1	22.5	22.01	-0.03	0.141	0.158		Yes
T398	LTE B5	QPSK10M	20525	25	0	Right Side	1	22.5	22.01	0.01	0.193	0.216		Yes
T399	LTE B5	QPSK10M	20525	25	0	Bottom Side	1	22.5	22.01	-0.02	0.054	0.060		Yes
T401	LTE B5	QPSK10M	20525	1	24	Rear Face	2	23.5	23.37	-0.05	0.302	0.311		Yes
T402	LTE B5	QPSK10M	20525	1	24	Rear Face	3	23.5	23.37	0.08	0.296	0.305		Yes
T403	LTE B5	QPSK10M	20525	1	24	Rear Face	1	23.5	23.37	0.03	0.315	0.325	TRT-L53	Yes
T420	LTE B7	QPSK20M	21350	1	50	Front Face	1	22.5	19.36	0.04	0.482	0.993		Yes
T421	LTE B7	QPSK20M	21350	1	50	Rear Face	1	22.5	19.36	0.01	0.314	0.647		Yes
T422	LTE B7	QPSK20M	21350	1	50	Left Side	1	22.5	19.36	0.02	0.068	0.140		Yes
T423	LTE B7	QPSK20M	21350	1	50	Right Side	1	22.5	19.36	-0.03	0.146	0.301		Yes
T424	LTE B7	QPSK20M	21350	1	50	Bottom Side	1	22.5	19.36	0.06	0.245	0.505		Yes
T425	LTE B7	QPSK20M	21100	50	0	Front Face	1	22.5	19.34	0.05	0.400	0.828	TRT-LX3	Yes
T426	LTE B7	QPSK20M	21100	50	0	Rear Face	1	22.5	19.34	0.01	0.263	0.544		Yes
T427	LTE B7	QPSK20M	21100	50	0	Left Side	1	22.5	19.34	-0.04	0.041	0.085		Yes
T428	LTE B7	QPSK20M	21100	50	0	Right Side	1	22.5	19.34	-0.03	0.130	0.269		Yes
T429	LTE B7	QPSK20M	21100	50	0	Bottom Side	1	22.5	19.34	0.01	0.253	0.524		Yes
T431	LTE B7	QPSK20M	21350	1	50	Front Face	2	22.5	19.36	0.05	0.356	0.734		Yes
T432	LTE B7	QPSK20M	21350	1	50	Front Face	3	22.5	19.36	0.06	0.432	0.890		Yes
T433	LTE B7	QPSK20M	21350	1	50	Front Face	1	20.5	19.36	0.05	0.437	0.900	TRT-L53	Yes
T550	LTE B12	QPSK10M	23095	1	24	Front Face	23.5	22.95	0.03	0.230	0.261	T550	TRT-L53	Yes

T551	LTE B12	QPSK10M	23095	1	24	Rear Face	23.5	22.95	0.02	0.235	0.267	T551		Yes
T552	LTE B12	QPSK10M	23095	1	24	Left Side	23.5	22.95	-0.06	0.198	0.225	T552		Yes
T553	LTE B12	QPSK10M	23095	1	24	Right Side	23.5	22.95	0.01	0.201	0.228	T553		Yes
T554	LTE B12	QPSK10M	23095	1	24	Bottom Side	23.5	22.95	0.02	0.035	0.040	T554		Yes
T555	LTE B12	QPSK10M	23130	25	0	Front Face	22.5	21.81	-0.05	0.172	0.202	T555		Yes
T556	LTE B12	QPSK10M	23130	25	0	Rear Face	22.5	21.81	0.03	0.18	0.211	T556		Yes
T557	LTE B12	QPSK10M	23130	25	0	Left Side	22.5	21.81	-0.06	0.156	0.183	T557		Yes
T558	LTE B12	QPSK10M	23130	25	0	Right Side	22.5	21.81	0.02	0.162	0.190	T558		Yes
T559	LTE B12	QPSK10M	23130	25	0	Bottom Side	22.5	21.81	-0.03	0.017	0.020	T559		Yes
T560	LTE B12	QPSK10M	23095	1	24	Rear Face	23.5	22.95	0.03	0.243	0.276	T560		Yes
T561	LTE B12	QPSK10M	23095	1	24	Rear Face	23.5	22.95	-0.09	0.248	0.282	T561		Yes

2.1 product specific 10-g SAR test of LTE

Test No.	Band	Mode	CH	RB	Off set	Test Position (with 0mm)	Ea rp ho ne	Batte ry	Tune up	Measu red	Drift (dB)	SAR Value (W/kg) ¹ 0-g	Reporte d SAR10- g	Test Sample
T360	LTE B4	QPSK20M	20175	1	0	Front Face	-	1	23	22.22	0.04	2.080	2.489	TRT-LX 3
T361	LTE B4	QPSK20M	20175	1	0	Bottom Side	-	1	23	22.22	0.06	1.400	1.675	
T362	LTE B4	QPSK20M	20300	50	0	Front Face	-	1	22	21.26	0.04	1.710	2.028	
T363	LTE B4	QPSK20M	20300	50	0	Bottom Side	-	1	22	21.26	0.02	0.810	0.960	
T364	LTE B4	QPSK20M	20050	1	50	Front Face	-	1	23	22.05	0.01	1.940	2.414	
T365	LTE B4	QPSK20M	20300	1	50	Front Face	-	1	23	22.2	0.06	1.930	2.320	
T366	LTE B4	QPSK20M	20050	50	50	Front Face	-	1	22	21.23	-0.03	1.660	1.982	
T367	LTE B4	QPSK20M	20175	50	0	Front Face	-	1	22	21.22	-0.02	1.650	1.975	
T369	LTE B4	QPSK20M	20175	1	0	Front Face	-	2	23	22.22	0.05	1.960	2.346	
T370	LTE B4	QPSK20M	20175	1	0	Front Face	-	3	23	22.22	-0.03	2.040	2.441	
T371	LTE B4	QPSK20M	20300	100	0	Front Face	-	1	22	21.19	0.07	1.790	2.157	
T373	LTE B4	QPSK20M	20175	1	0	Front Face	-	1	23	22.22	0.00	2.690	3.219	TRT-L53
T374	LTE B4	QPSK20M	20175	1	0	Front Face	1	1	23	22.22	0.01	2.670	3.195	
T375	LTE B4	QPSK20M	20175	1	0	Front Face	2	1	23	22.22	-0.01	2.620	3.135	
T376	LTE B4	QPSK20M	20175	1	0	Front Face	3	1	23	22.22	0.03	2.690	3.219	
T377	LTE B4	QPSK20M	20175	1	0	Front Face	4	1	23	22.22	0.02	2.730	3.267	
T378	LTE B4	QPSK20M	20175	1	0	Front Face (1 ST repeated)	4	1	23	22.22	-0.02	2.710	3.243	
T379	LTE B4	QPSK20M	20175	1	0	Front Face (with replaced holder)	4	1	23	22.22	0.02	2.710	3.243	

3. Hotspot SAR test results of WIFI

Test No.	Band	CH	Test Position (with 10mm)	Battery	Data Rate	Power Setting	Tune up	Measure d	Drift(dB)	SAR Value (W/kg)1-g	Reported SAR	Test Sample
T460	802.11b	6	Front Face	1	1	16	17.8	17.31	-0.01	0.229	0.256	TRT-LX3
T461	802.11b	6	Rear Face	1	1	16	17.8	17.31	0.02	0.150	0.168	
T462	802.11b	6	Right Side	1	1	16	17.8	17.31	0.04	0.132	0.148	
T463	802.11b	6	Top Side	1	1	16	17.8	17.31	-0.07	0.085	0.095	
T464	802.11b	6	Front Face	2	1	16	17.8	17.31	-0.01	0.294	0.329	
T465	802.11b	6	Front Face	3	1	16	17.8	17.31	0.01	0.238	0.266	
T466	802.11b	6	Front Face	2	1	15	17.8	17.31	-0.06	0.268	0.300	TRT-L53

Note: Per KDB248227 D01, the highest SAR measured for the initial test position or initial test configuration should be used to determine SAR test exclusion according to the sum of 1-g SAR and SAR peak to location ratio provisions in KDB 447498. In addition, a test lab may also choose to perform standalone SAR measurements for test positions and 802.11 configurations that are not required by the initial test position or initial test configuration procedures and apply the results to determine simultaneous transmission SAR test exclusion, according to sum of 1-g and SAR peak to location ratio requirements to reduce the number of simultaneous transmission SAR measurements.

Per KDB648474D04, when hotspot mode applies, product specific 10-g SAR is required only for the surfaces and edges with hotspot mode 1-g reported SAR > 1.2 W/kg; however, when power reduction applies to hotspot mode the measured SAR must be scaled to the maximum output power, including tolerance, allowed for phablet modes to compare with the 1.2 W/kg SAR test reduction threshold:

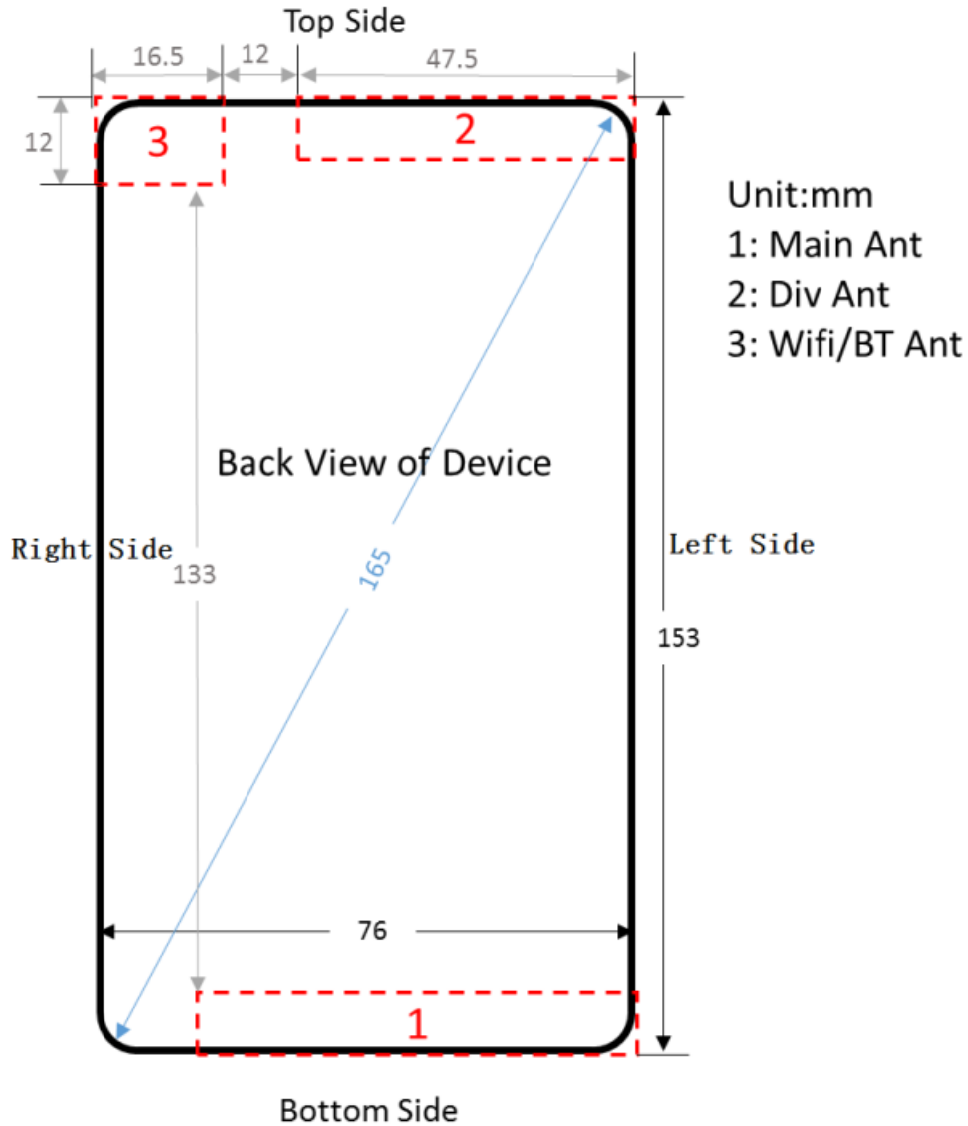
Test No.	Band	CH	Test Position (with 10mm)	Battery	Data Rate	Power Setting	Tune up	Measured	Drift(dB)	SAR Value (W/kg)1-g	Scaled SAR _{1g} (W/kg)	Test Sample	product specific 10-g SAR Exclusion
T460	802.11b	6	Front Face	1	1	16	17.8	17.31	-0.01	0.229	0.256	TRT-LX3	Yes
T461	802.11b	6	Rear Face	1	1	16	17.8	17.31	0.02	0.150	0.168		Yes
T462	802.11b	6	Right Side	1	1	16	17.8	17.31	0.04	0.132	0.148		Yes
T463	802.11b	6	Top Side	1	1	16	17.8	17.31	-0.07	0.085	0.095		Yes
T464	802.11b	6	Front Face	2	1	16	17.8	17.31	-0.01	0.294	0.329		Yes
T465	802.11b	6	Front Face	3	1	16	17.8	17.31	0.01	0.238	0.266		Yes
T466	802.11b	6	Front Face	2	1	15	17.8	17.31	-0.06	0.268	0.300	TRT-L53	Yes

8.3 MULTIPLE TRANSMITTER EVALUATION

The following tables list information which is relevant for the decision if a simultaneous transmit evaluation is necessary according to FCC KDB 447498 D01 General RF Exposure Guidance.

The length of the diagonal of the mobile phone is 165mm.

The location of the antennas inside mobile phone is shown as below picture:



Note: The Div antenna is used to improve the acceptance of performance of the main antenna, it does not have a transmitter function.

8.3.1 STAND-ALONE SAR TEST EXCLUSION

Per FCC KDB 447498 D01, the 1-g SAR and 10-g SAR test exclusion thresholds for 100 MHz to 6 GHz at test separation distances ≤ 50 mm are determined by:

$[(\text{max. power of channel, including tune-up tolerance, mW}) / (\text{min. test separation distance, mm})] \sqrt{f(\text{GHz})} \leq 3.0$ for 1-g SAR and ≤ 7.5 for product specific 10-g SAR, where:

- $f(\text{GHz})$ is the RF channel transmit frequency in GHz
- Power and distance are rounded to the nearest mW and mm before calculation
- The result is rounded to one decimal place for comparison

When the minimum test separation distance is < 5 mm, a distance of 5 mm is applied to determine SAR test exclusion.

Standalone SAR test exclusion for BT

Mode	Position	P_{max} (dBm)*	P_{max} (mW)	Distance (mm)	f (GHz)	Calculation Result	SAR Exclusion threshold	SAR test exclusion
BT	Body-Worn	11	12.59	15	2.48	1.32	3	Yes
BT	product specific 10-g SAR	11	12.59	5	2.48	3.97	7.5	Yes

Note:

- 1)* - maximum possible output power declared by manufacturer
- 2) Held to ear configurations are not applicable to Bluetooth for this device.

When standalone SAR test exclusion applies to an antenna that transmits simultaneously with other antennas, the standalone SAR must be estimated according to following to determine simultaneous transmission SAR test exclusion:

$(\text{max. power of channel, including tune-up tolerance, mW}) / (\text{min. test separation distance, mm}) \cdot [\sqrt{f(\text{GHz})} / x] \text{ W/kg}$ for test separation distances ≤ 50 mm, where $x = 7.5$ for 1-g SAR and $x = 18.75$ for 10-g SAR.

When the minimum test separation distance is < 5 mm, a distance of 5 mm is applied to determine SAR test exclusion

According to KDB 447498 D01, when standalone SAR test exclusion applies to an antenna that transmits simultaneously with other antennas, the standalone SAR was estimated according to following formula to result in substantially conservative SAR values of $\leq 0.4 \text{ W/kg}$ to determine simultaneous transmission SAR test exclusion.

$$\text{Estimated SAR} = \frac{\text{Max. Tune up Power}_{(\text{mW})}}{\text{Min. Test Separation Distance}_{(\text{mm})}} \times \frac{\sqrt{f_{(\text{GHz})}}}{7.5}$$

Estimated SAR calculation

Mode	Position	P_{max} (dBm)*	P_{max} (mW)	Distance (mm)	f (GHz)	X	Estimated SAR (W/kg)*
BT	Body-Worn	11	12.59	15	2.48	7.5	0.176
BT	product specific 10-g SAR	11	12.59	5	2.48	18.75	0.211

Note: * - maximum possible output power declared by manufacturer

8.3.2 STAND-ALONE SAR TEST EXCLUSION

Per FCC KDB 447498D01, SAR compliance for simultaneous transmission must be considered when the maximum duration of overlapping transmissions, including network hand-offs, is greater than 30 seconds. This device contains multiple transmitters that may operate simultaneously, and therefore requires a simultaneous transmission analysis.

The Simultaneous Transmission Possibilities of this device are as below:

No.	Configuration	Head	Body-worn	Hotspot	product specific 10-g SAR
1	GSM (Voice) + WiFi 2.4G	Yes	Yes	N/A	Yes
2	GPRS/EDGE (DATA) + WiFi 2.4G	N/A	N/A	Yes	Yes
3	GSM(Voice) +BT	N/A	Yes	N/A	Yes
4	GPRS/EDGE(DATA)+BT	N/A	N/A	N/A	Yes
5	UMTS(Voice)+WiFi 2.4G	Yes	Yes	N/A	Yes
6	UMTS(DATA)+WiFi 2.4G	N/A	Yes	Yes	Yes
7	UMTS(Voice)+BT	N/A	Yes	N/A	Yes
8	UMTS(DATA)+BT	N/A	Yes	N/A	Yes
9	LTE+WiFi 2.4G	Yes*	Yes*	Yes	Yes*
10	LTE+BT	N/A	Yes*	N/A	Yes*

Note:

- i)* VOIP 3rd party applications may possibly be installed and used by the end user.
- ii) Wi-Fi 2.4G and Bluetooth share the same antenna and can't transmit simultaneously.
- iii) 2G&3G&4G share the same antenna and can't transmit simultaneously.
- iv) The device does not support DTM function.
- v) Held to ear configurations are not applicable to Bluetooth and therefore were not considered for simultaneous transmission.
- vi) The device supports VoLTE function.

8.3.3 SAR SUMMATION SCENARIO

About BT/ WiFi and GSM/UMTS/LTE antenna

Test Position	Head				Body-Worn		Hotspot					
	Right Cheek	Right Tilted	Left Cheek	Left Tilted	Front	Rear	Front	Rear	Left	Right	Top	Bottom
GSM850	0.309	0.236	0.285	0.231	0.399	0.490	0.422	0.387	0.264	0.360	-	0.098
GSM1900	0.104	0.070	0.270	0.063	0.286	0.244	0.338	0.203	0.104	0.023	-	0.306
UMTS B2	0.164	0.110	0.432	0.087	0.432	0.363	0.698	0.516	0.263	0.026	-	0.717
UMTS B4	0.068	0.045	0.291	0.054	0.832	0.486	0.667	0.439	0.100	0.000	-	0.915
UMTS B5	0.307	0.262	0.287	0.225	0.458	0.507	0.487	0.528	0.411	0.461	-	0.153
LTE B2	0.162	0.111	0.467	0.083	0.385	0.266	0.536	0.326	0.193	0.028	-	0.538
LTE B4	0.075	0.057	0.351	0.069	0.724	0.511	0.581	0.281	0.064	0.000	-	0.652
LTE B5	0.137	0.118	0.260	0.125	0.219	0.297	0.280	0.333	0.193	0.259	-	0.064
LTE B7	0.224	0.029	0.077	0.043	0.389	0.383	0.627	0.408	0.088	0.190	-	0.330
LTE B12	0.157	0.123	0.193	0.129	0.184	0.263	0.261	0.282	0.225	0.228	-	0.040
BT	-	-	-	-	0.176	0.176	-	-	-	-	-	-
WiFi 2.4G	0.131	0.123	0.347	0.241	0.129	0.070	0.329	0.168	-	0.148	0.095	-
MAX Σ SAR _{1g}	0.440	0.385	0.814	0.472	1.008	0.687	1.027	0.696	0.411	0.608	0.095	0.915

MAX. Σ SAR_{1g}=1.027W/kg<1.6 W/kg, so the SAR to peak location separation ratio should not be considered.

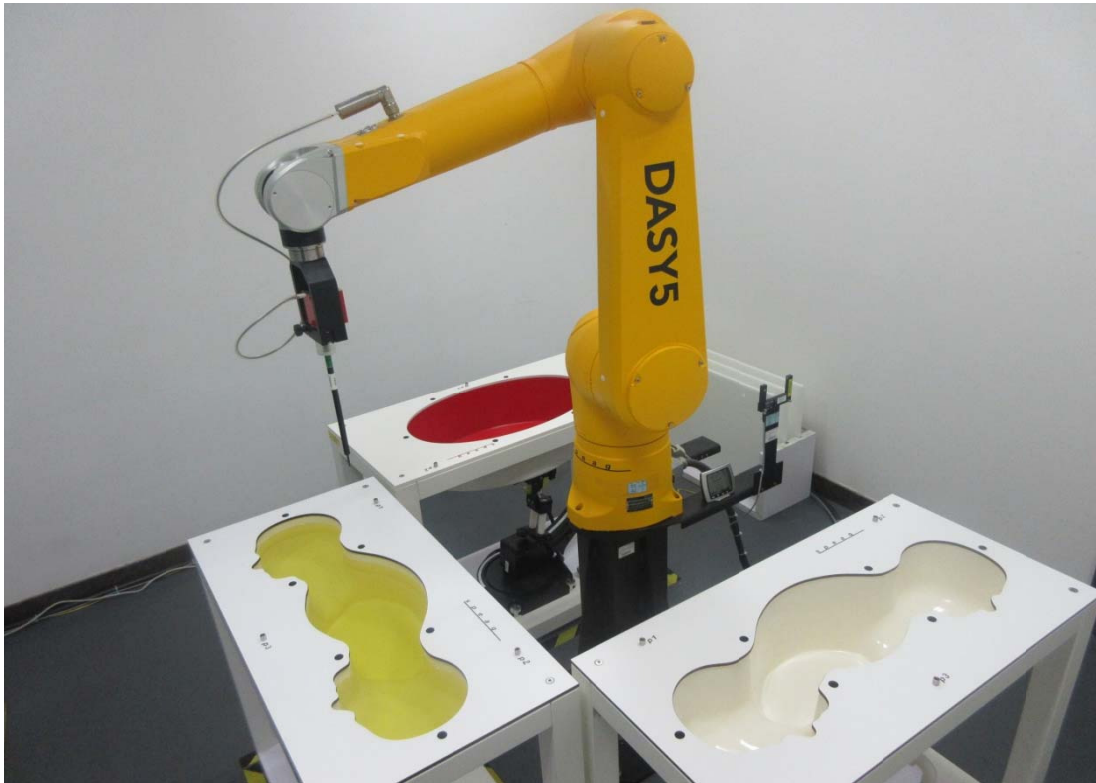
Test Position	product specific 10-g SAR					
	Front	Rear	Left	Right	Top	Bottom
GSM850	-	-	-	-	-	-
GSM1900	-	-	-	-	-	-
UMTS B2	-	-	-	-	-	-
UMTS B4	3.535	-	-	-	-	1.620
UMTS B5	-	-	-	-	-	-
LTE B2	-	-	-	-	-	-
LTE B4	3.267	-	-	-	-	1.675
LTE B5	-	-	-	-	-	-
LTE B7	-	-	-	-	-	-
BT	0.211	0.211	-	0.211	0.211	-
WiFi 2.4G	-	-	-	-	-	-
MAX Σ SAR _{10g}	3.746	0.211	-	0.211	0.211	1.675

MAX. Σ SAR_{10g}=3.746W/Kg<4.0 W/Kg, so the SAR to peak location separation ratio should not be considered.

APPENDIX

1. Test Layout

Specific Absorption Rate Test Layout



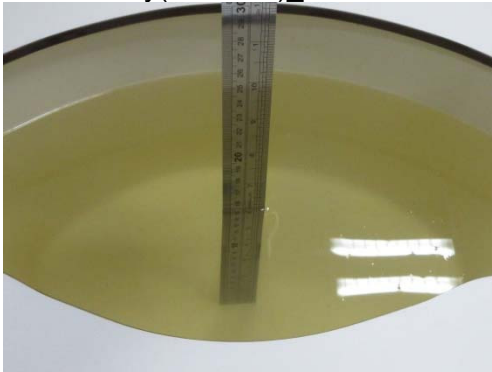
Liquid depth in the flat Phantom ($\geq 15\text{cm}$ depth)

Body(750MHz)_15.6cm

Head(750MHz)_15.6cm



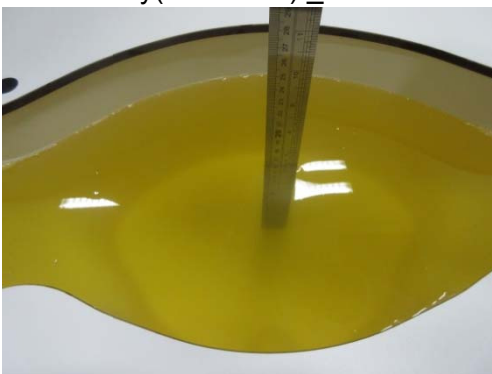
Body(835MHz)_15.6cm



Head(835MHz)_15.9cm



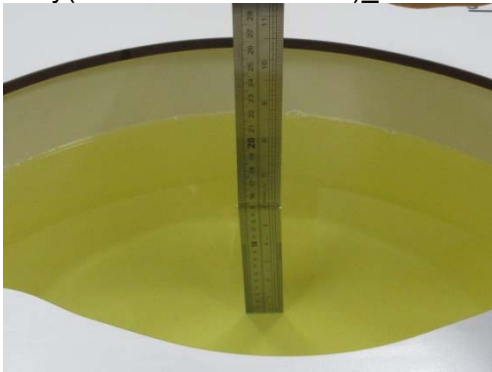
Body(1750MHz)_15.4cm



Head(1750MHz)_15.9cm



Body(1900MHz~2600 MHz)_15.5cm Head (1900MHz~2600MHz)_15.1cm



Appendix A. SAR Plots of System Verification

(Pls See Appendix A.)

Appendix B. SAR Plots of SAR Measurement

(Pls See Appendix B.)

Appendix C. Calibration Certificate for Probe and Dipole

(Pls See Appendix C.)

Appendix D. Photographs of the Test Set-Up

(Pls See Appendix D.)

End