

PT530 500Mbps Powerline Access Point

Quick Start

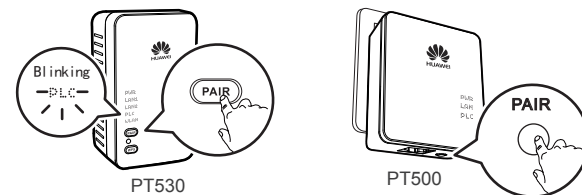
1 Pairing Powerline Devices

This product must be used with other powerline devices. This section uses a PT530 and a PT500 to illustrate the pairing process.

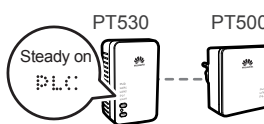
1. Plug the PT530 into a power outlet. When the PT530 is powered on, its **PWR** indicator will turn to steady on.
2. Plug the PT500 into a power outlet nearby the PT530.



3. Press and hold the **PAIR** button on the PT530 for 1 second and then release it. Its **PLC** indicator will start to blink.
4. Within 2 minutes, press and hold the **PAIR** button on the PT500 for 1 second and then release it.



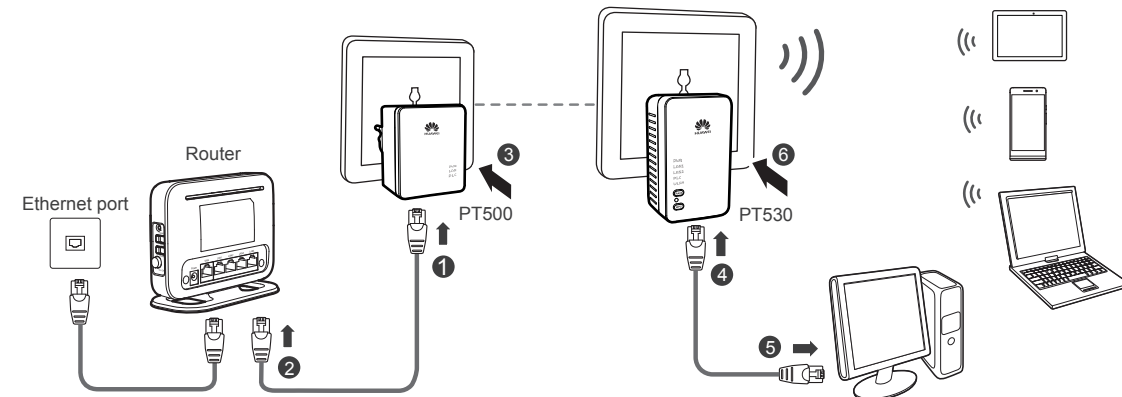
5. Check the indicators' status on the PT530 and the PT500. If both two **PLC** indicators on the PT530 and the PT500 turn to steady on from blinking status within 10 seconds, the connection between the PT530 and the PT500 has been established successfully.



i If you press the PAIR button and the PLC indicator starts to blink while connection cannot be established, press and hold the PAIR button for 8 seconds until the PLC indicator turns off, and then the PT530 will exit the current network. Please repeat from step 1 to restart the pairing process.

2 Connecting Cables

Taking the paired PT530 and PT500 as an example, this section introduces the installation method of PT530 by illustrating their connection to the Internet through a router. Connect your devices in the sequence indicated in the following figure.



1. Connect one end of a network cable to the PT500.
2. Connect the other end of the same network cable to the router's LAN port.
3. Plug the PT500 into a power outlet.

After the PT530 is powered on, the PT530 indicator turns on. The following table lists how the indicators behave when the PT530 is operating correctly. If the indicators do not behave as expected, ensure that everything is plugged in correctly.

Indicator	Expected State	Description
PWR	Steady on	The PT530 is powered on.
PLC	Steady on	The PT530 is paired with another powerline device.
LAN1/LAN2	Steady on	The LAN port is connected to an Ethernet device with a network cable.
WLAN	Steady on	WLAN is enabled.

4. Connect one end of a network cable to the PT530's LAN port (either LAN1 or LAN2).
5. Connect the other end of the network cable to your computer's network port.
6. Plug the PT530 into a power outlet.

If the basic configuration of your router has already been set (A computer connected to the router can directly connect to the Internet) before you install the PT530, Ethernet devices such as a computer connecting to the PT530 with cables can access the Internet directly after the PT530 completed the installation as the figure shows above.

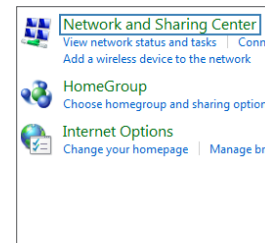
i For the wireless connection method to the PT530, please refer to the following section to complete the wireless configuration.

3 Setting the Computer IP Address

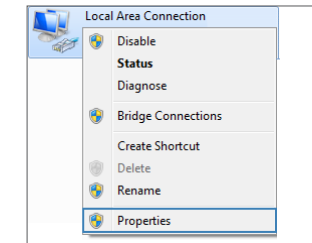
Before logging in to the PT530 web management page, set the IP address of the computer that will be used for the login.

Procedure on Computers Running Windows 7

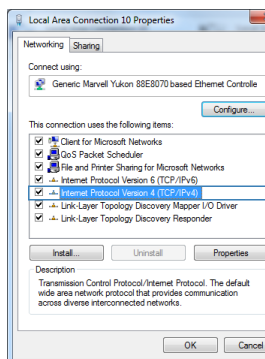
1. Choose **Start > Control Panel > Network and Internet > Network and Sharing Center**.



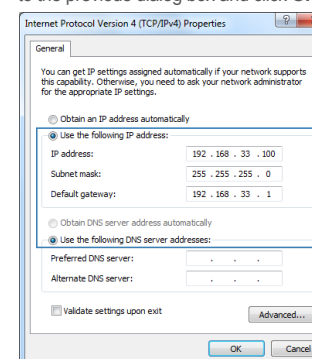
2. Choose **Change adapter settings**. Right-click **Local Area Connection** and choose **Properties**.



3. Double-click **Internet Protocol Version 4 (TCP/IPv4)**.



4. Select **Use the following IP address**. Set **IP address** to **192.168.33.100**, **Subnet mask** to **255.255.255.0**, and **Default gateway** to **192.168.33.1**. Click **OK** to return to the previous dialog box and click **OK**.

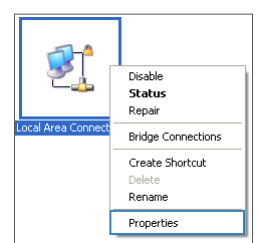


Procedure on Computers Running Windows XP

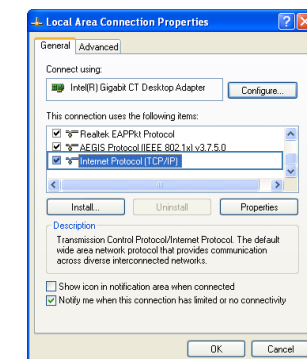
1. Choose **Start > Control Panel > Network and Internet > Network Connections**.



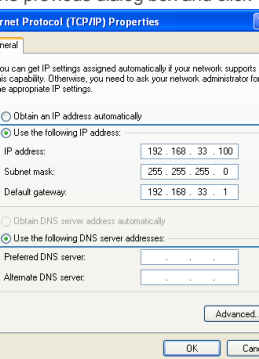
2. Click **Network Connections**. Right-click **Local Area Connection** and choose **Properties** from the shortcut menu.



3. Double-click **Internet Protocol (TCP/IP)**.



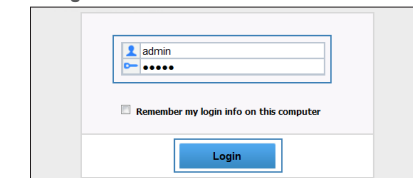
4. Select **Use the following IP address**. Set **IP address** to **192.168.33.100**, **Subnet mask** to **255.255.255.0**, and **Default gateway** to **192.168.33.1**. Click **OK** to return to the previous dialog box and click **OK**.



4 Setting the PT530 Wireless Parameters

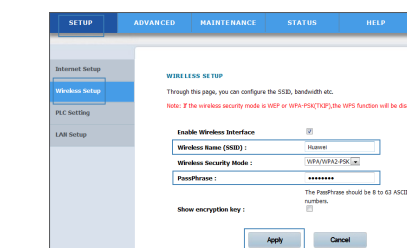
Before the configuration, please ensure that your computer has been connected to the PT530's LAN port and the IP address is 192.168.33.* (* indicates from 2 to 254). For more details, please refer to the chapter 3 "Setting the Computer IP Address".

1. Open a browser. In the address box, enter **192.168.33.1**. Press **Enter**.
2. Enter the login user name (**admin** by default) and password (**admin** by default). Click **Login**.



i To protect against unauthorized access, change the user name and password after the first login.

3. Choose **SETUP > Wireless Setup**. Enter the SSID (WLAN name) and key you specified into the **Wireless Name (SSID)** and **PassPhrase**, and then click **Apply**.



1. Setting your SSID to an easily recognizable name is recommended, for example, "Huawei".
2. Password can be set to a combination of numbers or letters, and the letter is case sensitive.

You can record your SSID and password below for later examination:

SSID: _____
Key: _____

i If your router supports wireless function, setting the PT530's SSID and password to the same values as your existing Wi-Fi network's SSID and key is recommended.

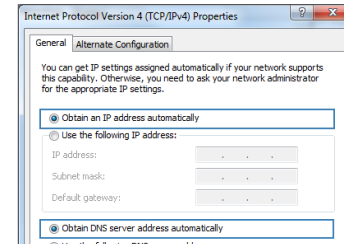


5 Resetting the Computer IP Address

After the PT530 has completed its configuration, you need to set the network connection of your computer to obtain an IP address automatically.

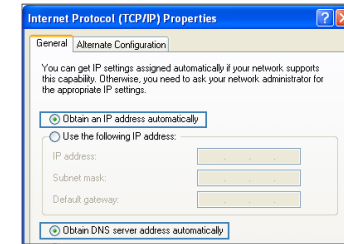
Procedure on Computers Running Windows 7

1. Enter into the **Internet Protocol Version 4 (TCP/IPv4)**. For more details, please refer to the chapter 3 **Setting the Computer IP Address**, from the step 1 to the step 3.
2. Choose **Obtain an IP address automatically** and **Obtain DNS server address automatically**, and then click **OK**. Return to the previews page, and click **OK**.



Procedure on Computers Running Windows XP

1. Enter into the **Internet Protocol (TCP/IP)**. For more details, please refer to the chapter 3 **Setting the Computer IP Address**, from the step 1 to the step 3.
2. Choose **Obtain an IP address automatically** and **Obtain DNS server address automatically**, and then click **OK**. Return to the previews page, and click **OK**.



7

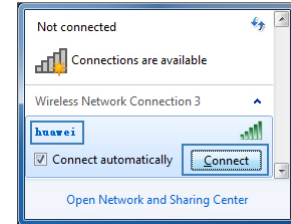
96721971_01

6 Wireless Connection Setup

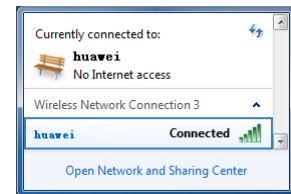
Before you proceed, make sure your computer has a network adapter installed. Then perform the following steps:

Procedure on Computers Running Windows 7

1. Click in the lower right corner of your desktop, select the SSID you configured in the previous section, and click **Connect**.
2. In the displayed dialog box, enter the WLAN password you configured in the previous section, and click **OK**.



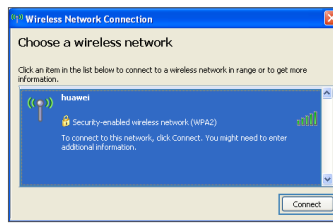
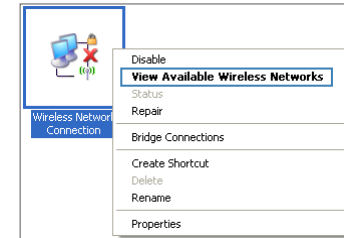
3. In the wireless network list, check the WLAN connection status. If the status is **Connected**, the computer is wirelessly connected to the PT530.



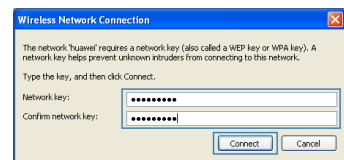
8

Procedure on Computers Running Windows XP

1. Right click in the lower right corner of your desktop. In the displayed option menu, choose **View Available Wireless Networks**.
2. Click **Refresh network list**. Double-click the network you configured in the previous section.

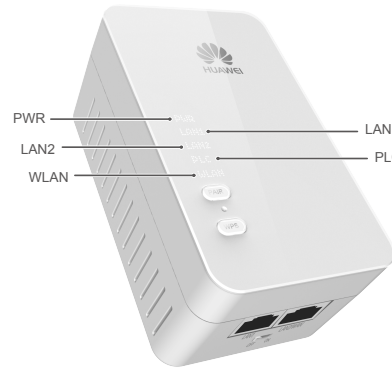


3. In the displayed dialog box, enter the WLAN password you configured in the previous section, and click **Connect**.
4. In the wireless network list, check the WLAN connection status. If the status is **Connected**, the computer is wirelessly connected to the PT530.



9

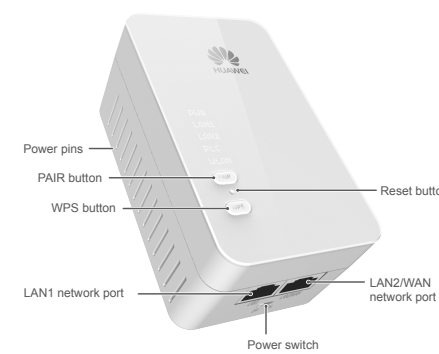
Indicators



Indicator	Status	Description
PWR	Steady on	The PT530 is powered on.
	Off	The PT530 is powered off.
LAN1/LAN2	Steady on	The LAN port is connected to an Ethernet device (such as a computer) with a network cable.
	Off	The LAN port is not connected to any Ethernet device.
PLC	Steady on	The PT530 is connected to a powerline device.
	Blinking	The PT530 is searching for available networks.
WLAN	Off	The PT530 is not paired with other powerline device.
	Off	The PT530 is paired but cannot find the other powerline device.
WLAN	Steady on	WLAN is enabled.
	Blinking	The PT530 is attempting to connect to a wireless client over the WLAN using the WPS function.
WLAN	Off	WLAN is disabled.

10

Buttons and ports



Button or port	Description
PAIR/Exit button	Pair: Used to establish connection between two powerline devices. Press and hold this button for about 1 second (from 0.5 second to 4 seconds), and then release it. The PLC indicator will start to blink. Within 2 minutes, press the PAIR button on the other powerline device. If PLC indicators on both two powerline devices turn to steady on from blinking status, it indicates that connection between the PT530 and the PT500 has been established successfully.
	Exit the pairing: Used to exit the current pairing connection and prepare for a new connection with other powerline device. Press and hold this button for more than 8 seconds until the PLC indicator turns off and then release it. The PT530 will exit the pairing connection.
Reset button	used to restore the PT530 to its default settings. After powering on the PT530, please use a needle to press and hold this button for more than 2 seconds until all the indicators turn off. The PT530 will restore to its default settings.

11

Button or port	Description
WPS/WLAN button	WPS: Used to start the WPS negotiation. Press and hold PT530's WPS button for about 1 second (from 0.5 second to 3 seconds), and release it. The WLAN indicator will start to blink. Within 2 minutes, press the WPS button on the wireless terminal such as a Laptop computer. If the WLAN indicator on the PT530 turns to steady on from blinking status, it indicates that wireless connection between wireless terminal and the PT530 has been established successfully.
	WLAN: Used to enable or disable the wireless network function. Press and hold this button for more than 3 seconds until the WLAN indicator turns to steady on to enable PT530's wireless network function. Or press and hold this button for more than 3 seconds until the WLAN indicator turns off to disable the wireless network function.
Power switch	Powers the PT530 on or off.
LAN1 port	LAN interface used to connect to Ethernet devices, such as computers, set-top boxes (STBs), and switches.
LAN2/WAN port	LAN interface in bridge mode: used to connect to Ethernet devices, such as computers, set-top boxes (STBs), and switches.
	WAN interface in router mode: used to connects to an Ethernet device that provides Internet access, such as a modem or switch.
LAN2/WAN port	By default, the PT530 uses bridge mode for network connection. You can log in to the web-based configuration utility and change it to router mode.



Figures in this guide are for reference only. Actual products may vary.

12

FAQs

Q1: If I Don't Have any Router, Can I Use Two PT530 to Enable My Computer to Access the Internet?

A1: Yes, the PT530 supports router function. You can log in to the web-based configuration utility and set one PT530 to router mode. And this PT530 can be used as a powerline device with wireless router function. For more help, go to <http://www.huaweidevice.com> to download the User Guide.

Q2: What Can I Do If I Cannot Open the Web Management Page?

A2: Perform the following steps:

1. Open Internet Explorer. Choose **Tools > Internet Options > Connections > LAN settings**, and ensure that all check boxes are deselected.
2. Check that the computer IP address is 192.168.33.*. (* is any integer from 2 to 254.)
3. Check that the cables are securely connected to the PT530 and that the LAN port's indicator is on.

If the problem persists, restore the PT530 to its default settings.

Obtaining More Information

For the full user guide, visit <http://www.huaweidevice.com>. Enter PT530 in the website search box and press Enter.

Please visit www.huaweidevice.com/worldwide/support/hotline for recently updated hotline and email address in your country or region.



What's in the box:
PT530 (1 pc), network cable (1 pc), Quick Start (1 pc), Safety Information & Warranty Card (1 pc) and Simple Note (1 pc)

13

Safety Information

This section contains important information about the operation of your device. It also contains information about how to use the device safely. Read this information carefully before using your device.

Electronic device

Do not use your device if using the device is prohibited. Do not use the device if doing so causes danger or interference with other electronic devices.

Interference with medical equipment

- > Follow rules and regulations set forth by hospitals and health care facilities. Do not use your device where prohibited.
- > Some wireless devices may affect the performance of hearing aids or pacemakers. Consult your service provider for more information.
- > Pacemaker manufacturers recommend that a minimum distance of 15 cm be maintained between a device and a pacemaker to prevent potential interference with the pacemaker. If using a pacemaker, hold the device on the side opposite the pacemaker and do not carry the device in your front pocket.

Areas with flammables and explosives

- > Do not use the device where flammables or explosives are stored (in a gas station, oil depot, or chemical plant, for example). Using your device in these environments increases the risk of explosion or fire. In addition, follow the instructions indicated in text or symbols.
- > Do not store or transport the device in containers with flammable liquids, gases, or explosives.

Operating environment

- > Avoid dusty, damp, or dirty environments. Avoid magnetic fields. Using the device in these environments may result in circuit malfunctions.
- > Before connecting and disconnecting cables, stop using the device and disconnect it from the power supply. Ensure that your hands are dry during operation.
- > Keep the device away from electronic appliances that generate strong magnetic or electric fields, such as a microwave oven or refrigerator.
- > During thunderstorms, power off your device and remove all cables connected to it to protect against lightning strikes.
- > Do not use your device during thunderstorms to protect your device against any danger caused by lightning.
- > Ideal operating temperatures are 0 °C to 40 °C . Extreme heat or cold may damage your device or accessories.
- > Keep the device and accessories in a well-ventilated and cool area away from direct sunlight. Do not enclose or cover your device with towels or other objects. Do not place the device in a container with poor heat dissipation, such as a box or bag.
- > To protect your device or accessories from fire or electrical shock hazards, avoid rain and moisture.
- > Keep the device away from sources of heat and fire, such as a heater, microwave oven, stove, water heater, radiator, or candle.
- > Observe local laws and regulations, and respect the privacy and legal rights of others.
- > Do not block device openings. Reserve a minimum of 10 cm around the device to dissipate heat.
- > Stop using your device or applications for a while if the device is

- overheated. If skin is exposed to an overheated device for an extended period, low temperature burn symptoms, such as red spots and darker pigmentation, may occur.
- > Do not touch the device's antenna. Otherwise, communication quality may be reduced.
- > Do not allow children or pets to bite or suck the device or accessories. Doing so may result in damage or explosion.
- > The device should be installed and operated with a minimum distance of 20 cm between the radiator and your body.
- > Keep the device in a place with good reception. The distance between the device and other metal materials (such as metal brackets or metal doors and windows) should be greater than 25cm and the distance between the device should be greater than 30cm.
- > The RX exposure/health calculation is based on a separation distance of 20 cm.

Child's safety

- > Comply with all precautions with regard to child's safety. Letting children play with the device or its accessories may be dangerous. The device includes detachable parts that may present a choking hazard. Keep away from children.
- > The device and its accessories are not intended for use by children. Children should only use the device with adult supervision.

Accessories

- > Using an unapproved or incompatible power adapter, charger or battery may cause fire, explosion or other hazards.

- > Choose only accessories approved for use with this model by the device manufacturer. The use of any other types of accessories may void the warranty, may violate local regulations and laws, and may be dangerous. Please contact your retailer for information about the availability of approved accessories in your area.

Power adapter safety

- > The power plug is intended to serve as a disconnect device.
- > For pluggable devices, the socket-outlet shall be installed near the devices and shall be easily accessible.
- > Unplug the power adapter from electrical outlets and the device when not in use.
- > Do not drop or cause an impact to the power adapter. If it is damaged, take it to an authorized service center for inspection.
- > If the power cable is damaged (for example, the cord is exposed or broken), or the plug loosens, stop using it at once. Continued use may lead to electric shocks, short circuits, or fire.
- > Do not touch the device or the power adapter with wet hands. Doing so may lead to short circuits, malfunctions, or electric shocks.
- > If your power adapter has been exposed to water, other liquids, or excessive moisture, take it to an authorized service center for inspection.

Cleaning and maintenance

- > During storage, transportation, and operation of the device, keep it dry and protect it from collision.
- > Keep the device and accessories dry. Do not attempt to dry it with an

Warranty Card

Thank you for choosing Huawei Technologies Co., Ltd. — a leading telecom solution provider. To get better services, please read this warranty card carefully, fill in the required information and preserve this card in good condition.

Limited Warranty

Subject to the exclusions contained below, Huawei Technologies Co., Ltd. (hereinafter referred to as Huawei) warrants its access terminals (“Products”) to be free from defects in materials and workmanship under normal consumer usage for one year from the date of purchase of the product (“Warranty period”). During the warranty period, a Huawei authorized service partner shall remedy defects in materials and workmanship free of charge.

Special Notice:

- (1) The warranty card shall be applicable only after being stamped by the dealer.
- (2) The warranty card must be preserved in good condition and free of any scratch or alteration.
- (3) To claim such service for defects that are not included in the following exclusion terms, the warranty card and the invoice that records the product serial number shall be presented to a Huawei authorized service partner.

Exclusions:

- In any of the following cases, the warranty card becomes unenforceable or inapplicable without prior notice:
- (1) The defects are caused by improper handling in transportation and assembly.
 - (2) The defects are caused by the fact that the product is dismantled or altered by anyone that is not from a Huawei authorized service partner.
 - (3) The defects are caused by the fact that the product is used in a harsh environment that is not suitable for the operation of the product.



- (4) The defects are caused by any force majeure including but not limited to fire, earthquake, lightning and tsunami.
 - (5) The defects are caused by the fact that the product is used or handled improperly, roughly or not as instructed in the applicable User Guide.
 - (6) The normal wear and tear, including but not limited to the normal wear and tear of the shell and the power module, shall not be covered by the limited warranty.
 - (7) The warranty card is altered or illegible, or the product serial number recorded on the warranty card is inconsistent with the actual one imprinted or labeled on the product.
 - (8) The product nameplate, serial number barcode, or seal label has been removed, erased, defaced, or is illegible.
- In any case that is not covered by this limited warranty or should the warranty expire, Huawei shall charge for the service(s) claimed for the products if the product is still remediable.
- Huawei preserves the right for interpretation of this limited warranty.

YOUR NAME.
Address/Postal Code.
Telephone.
Product Type.
Product Serial Number.
Purchase Date.
Invoice Number.
Dealer Name.
Dealer's Address/Telephone

Preserve well. No reissue.

Dealer's Seal:

external heat source, such as a microwave oven or hair dryer.

- > Do not expose your device or accessories to extreme heat or cold. These environments may interfere with proper function and may lead to fire or explosion.
- > Avoid collision, which may lead to device malfunctions, overheating, fire, or explosion.
- > If the device is not going to be used for an extended period of time, power it off, and remove all cables connected to it.
- > If anything unusual occurs (for example, if the device emits smoke or any unusual sound or smell), immediately stop using it, power it off, remove all cables connected to it, and contact an authorized service center.
- > Do not trample, pull, or excessively bend any cable. Doing so may damage the cable, causing the device to malfunction.
- > Before you clean or maintain the device, stop using it, stop all applications, and disconnect all cables connected to it.
- > Do not use any chemical detergent, powder, or other chemical agents (such as alcohol and benzene) to clean the device or accessories. These substances may cause damage to parts or present a fire hazard. Use a clean, soft, and dry cloth to clean the device and accessories.
- > Do not place magnetic stripe cards, such as credit cards and phone cards, near the device for extended periods of time. Otherwise the magnetic stripe cards may be damaged.
- > Do not dismantle or remanufacture the device and its accessories. This voids the warranty and releases the manufacturer from liability for damage. In case of damage, contact an authorized service center for assistance or repair.

Environmental protection

- > The device and its accessories (if included), such as the power adapter, headset, and battery should not be disposed of with household garbage.
- > Disposal of the device and its accessories is subject to local regulations. Support proper collection and recycling.

Disposal and recycling information



This symbol (with or without a solid bar) on the device, batteries (if included), and/or the packaging, indicates that the device and its electrical accessories (for example, a headset, adapter, or cable) and batteries should not be disposed of as household garbage.

These items should not be disposed of as unsorted municipal waste and should be taken to a certified collection point for recycling or proper disposal.

For more detailed information about device or battery recycling, contact your local city office, household waste disposal service, or retail store.

Disposal of the device and batteries (if included) is subject to WEEE Directive Recast (Directive 2012/19/EU) and Battery Directive (Directive 2006/66/EC). The purpose of separating WEEE and batteries from other waste is to minimize the potential environmental impacts and human health risk of any hazardous substances that may be present.

Reduction of hazardous substances

This device is compliant with the REACH Regulation [Regulation (EC) No 1907/2006] and RoHS Directive Recast (Directive 2011/65/EU). Batteries (if included) are compliant with the Battery Directive (Directive 2006/66/EC). For up-to-date information about REACH and RoHS compliance, please visit the

web site www.huaweidevice.com/certification.

EU regulatory conformance

Statement

Hereby, Huawei Technologies Co., Ltd. declares that this device is in compliance with the essential requirements and other relevant provisions of Directive 1999/5/EC.

For the declaration of conformity, visit the web site www.huaweidevice.com/certification.

The following marking is included in the product:



his device may be operated in all member states of the EU.

Observe national and local regulations where the device is used.

This device may be restricted for use, depending on the local network.

Restrictions in the 2.4 GHz band:

Norway: This subsection does not apply for the geographical area within a radius of 20 km from the centre of Ny-Ålesund.

FCC Regulatory Compliance

FCC statement

This equipment has been tested and found to comply with the limits for a Class B digital device, pursuant to Part 15 of the FCC Rules. These limits are designed to provide reasonable protection against harmful interference in a residential installation. This equipment generates, uses and can radiate radio frequency energy and, if not installed and used in accordance with the instructions, may cause harmful interference to radio communications.

However, there is no guarantee that interference will not occur in a particular installation. If this equipment does cause harmful interference to radio or television reception, which can be determined by turning the equipment off and on, the user is encouraged to try to correct the interference by one or more of the following measures:

--Reorient or relocate the receiving antenna.

--Increase the separation between the equipment and receiver.

--Connect the equipment into an outlet on a circuit different from that to which the receiver is connected.

--Consult the dealer or an experienced radio/TV technician for help.

This device complies with Part 15 of the FCC Rules. Operation is subject to the following two conditions: (1) this device may not cause harmful interference, and (2) this device must accept any interference received, including interference that may cause undesired operation.

Caution: Any changes or modifications to this device not expressly approved by Huawei Technologies Co., Ltd. for compliance could void the user's authority to operate the equipment.

Legal Notice

Copyright © Huawei Technologies Co., Ltd. 2013. All rights reserved.

THIS DOCUMENT IS FOR INFORMATION PURPOSE ONLY, AND DOES NOT CONSTITUTE ANY KIND OF WARRANTIES.

To better understand how we protect your personal information, please see the privacy policy at <http://consumer.huawei.com/en/privacy-policy/index.htm>.