

Appendix D. Photographs of the Test Set-Up

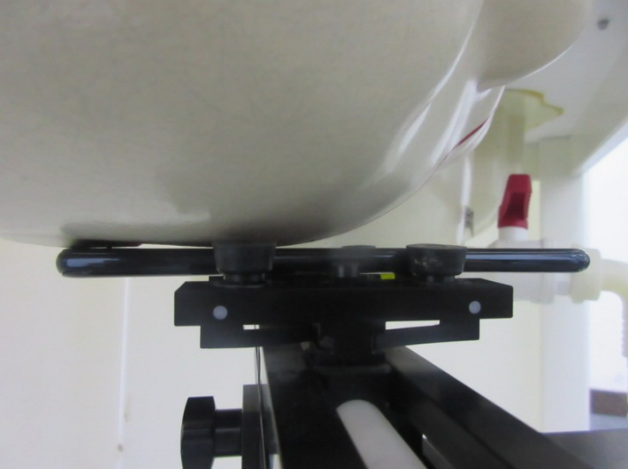

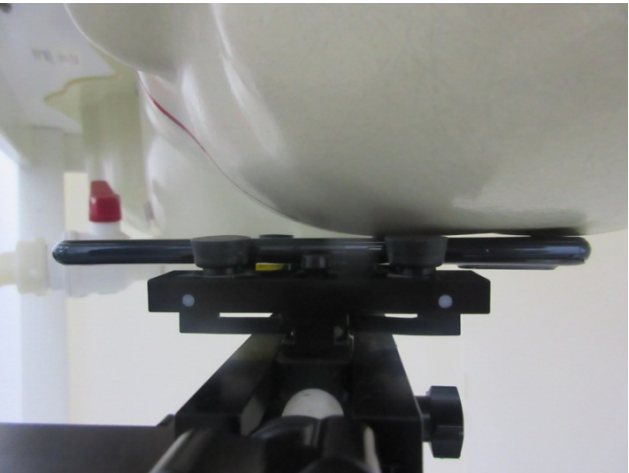
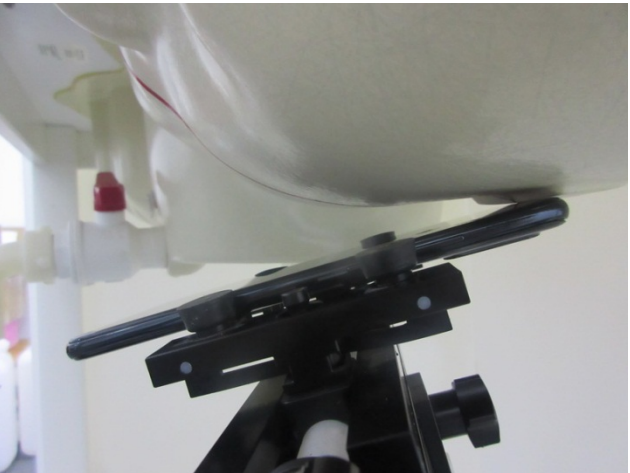


Photo 1: Right Cheek	Photo 2: Right Tilted
 A photograph showing a black mechanical fixture mounted on a tripod, positioned against the right cheek of a white mannequin head. The fixture has a horizontal bar with a yellow marker. A red cap is visible on a white tube in the background.	 A photograph showing the same black mechanical fixture on a tripod, tilted to the right against the right cheek of the white mannequin head. The red cap and white tube are visible in the background.
Photo 3: Left Cheek	Photo 4: Left Tilted
 A photograph showing the black mechanical fixture on a tripod, positioned against the left cheek of the white mannequin head. The red cap and white tube are visible in the background.	 A photograph showing the black mechanical fixture on a tripod, tilted to the left against the left cheek of the white mannequin head. The red cap and white tube are visible in the background.
Photo 5: Front Face_1.0cm	Photo 6: Front Face_1.5cm
 A close-up photograph of the black mechanical fixture on a tripod, positioned directly in front of the white mannequin head. The distance between the fixture and the head is approximately 1.0 cm.	 A close-up photograph of the black mechanical fixture on a tripod, positioned directly in front of the white mannequin head. The distance between the fixture and the head is approximately 1.5 cm.

Photo 7: Rear Face_1.0cm



Photo 8: Rear Face_1.5cm

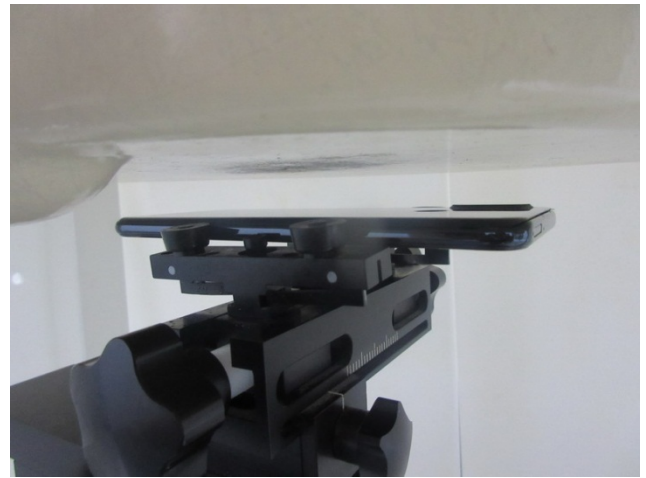


Photo 9: Left Side_1.0cm

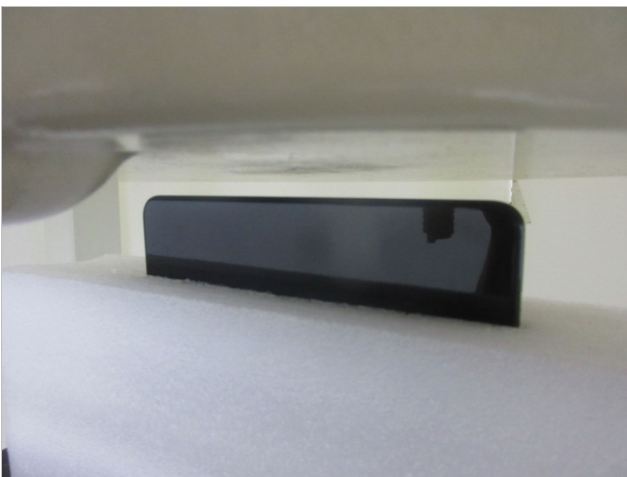


Photo 10: Right Side_1.0cm



Photo 11: Top Side_1.0cm



Photo 12: Bottom Side_1.0cm

