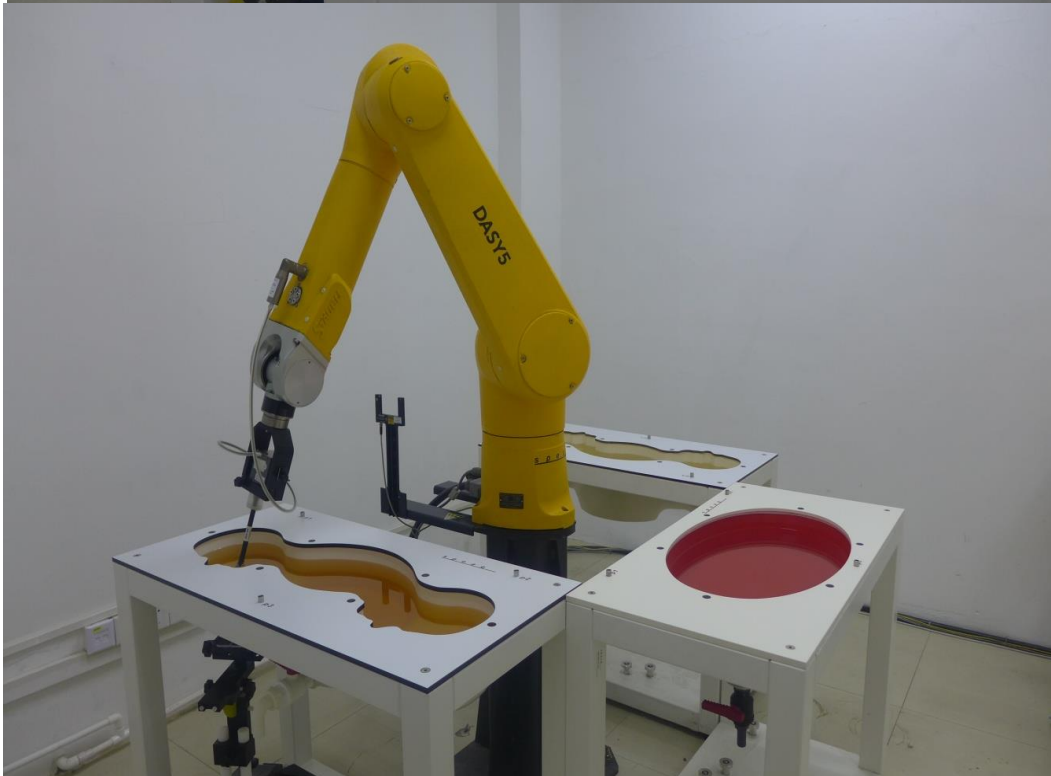
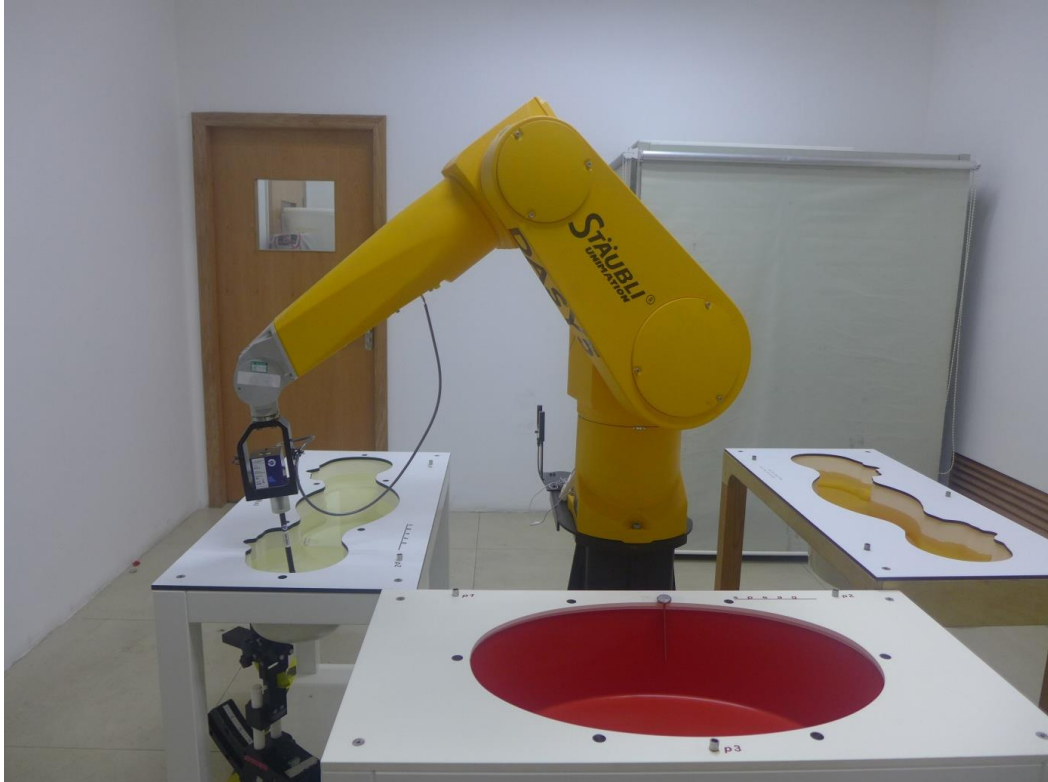


Appendix D

Photographs

1. SAR measurement System
2. Photographs of Tissue Simulate Liquid
3. Photographs of EUT test position
4. EUT Constructional Details

1. SAR measurement System



2. Photographs of Tissue Simulate Liquid

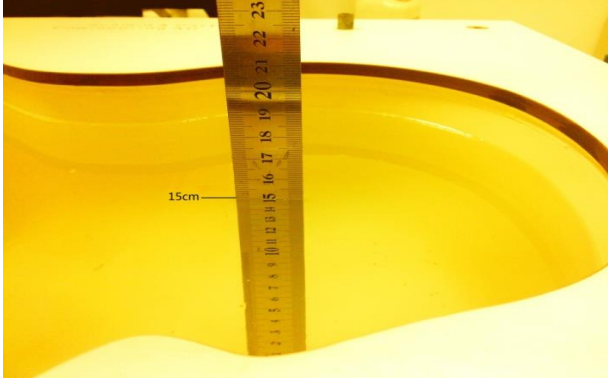
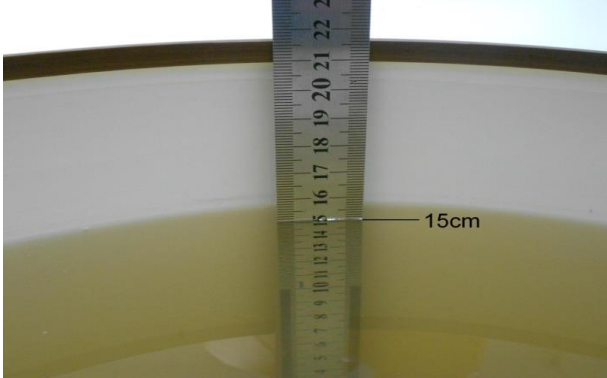
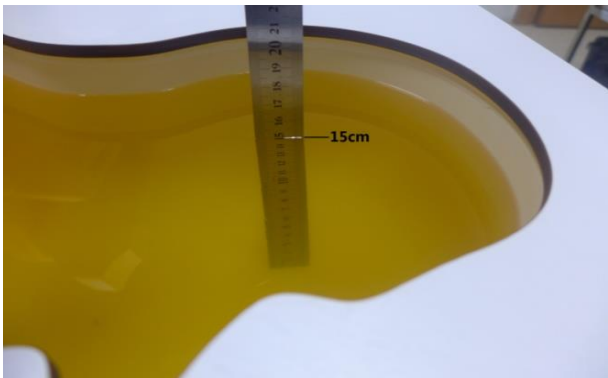
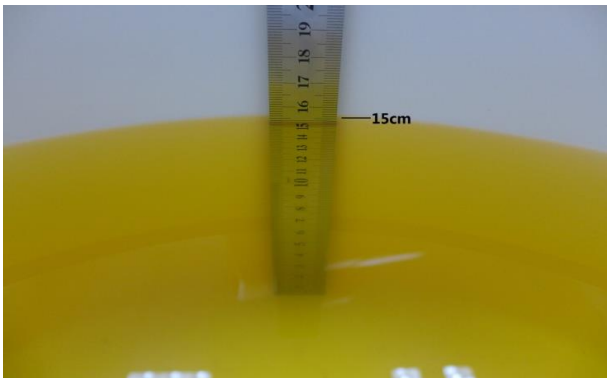
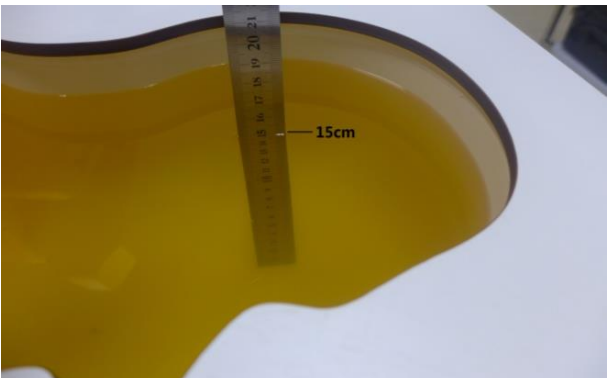
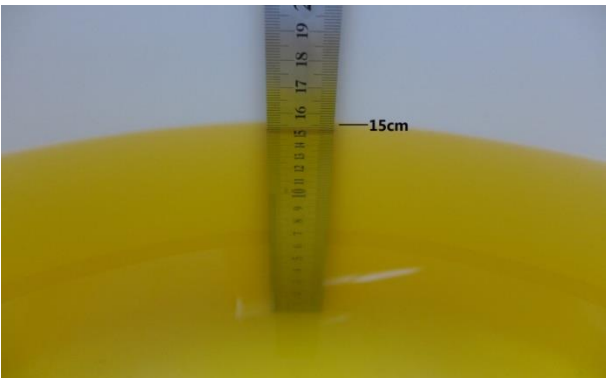
<p>Photo 1: Tissue Simulant Liquid for Head 835</p>	<p>Photo 2: Tissue Simulant Liquid for Body 835</p>
 <p>A photograph showing a yellow liquid in a white container. A ruler is placed vertically in the liquid, and a label '15cm' points to the liquid level on the ruler.</p>	 <p>A photograph showing a yellow liquid in a white container. A ruler is placed vertically in the liquid, and a label '15cm' points to the liquid level on the ruler.</p>
<p>Photo 3: Tissue Simulant Liquid for Head 1750</p>	<p>Photo 4: Tissue Simulant Liquid for Body 1750</p>
 <p>A photograph showing a yellow liquid in a white container. A ruler is placed vertically in the liquid, and a label '15cm' points to the liquid level on the ruler.</p>	 <p>A photograph showing a yellow liquid in a white container. A ruler is placed vertically in the liquid, and a label '15cm' points to the liquid level on the ruler.</p>
<p>Photo 5: Tissue Simulant Liquid for Head 1900</p>	<p>Photo 6: Tissue Simulant Liquid for Body 1900</p>
 <p>A photograph showing a yellow liquid in a white container. A ruler is placed vertically in the liquid, and a label '15cm' points to the liquid level on the ruler.</p>	 <p>A photograph showing a yellow liquid in a white container. A ruler is placed vertically in the liquid, and a label '15cm' points to the liquid level on the ruler.</p>

Photo 7: Tissue Simulant Liquid for Head 2450

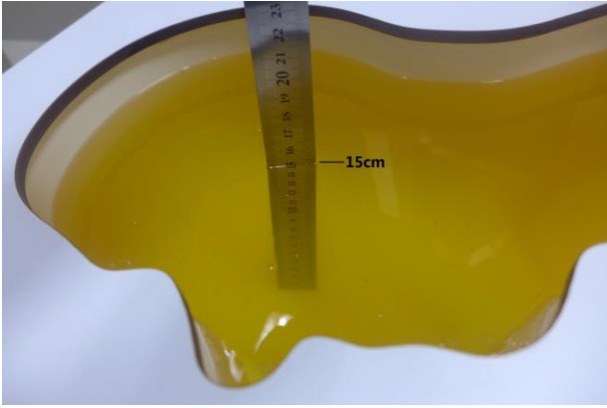


Photo 8: Tissue Simulant Liquid for Body 2450

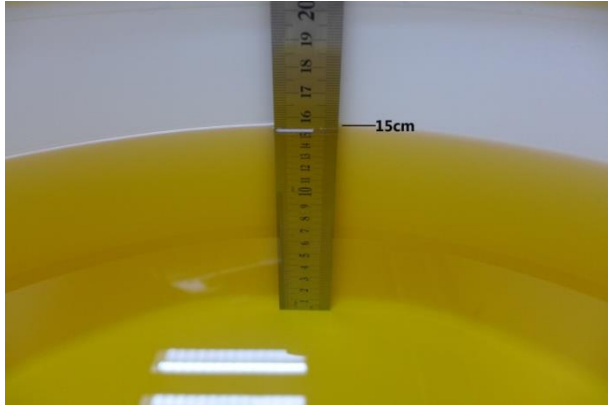


Photo 9: Tissue Simulant Liquid for Head 2600

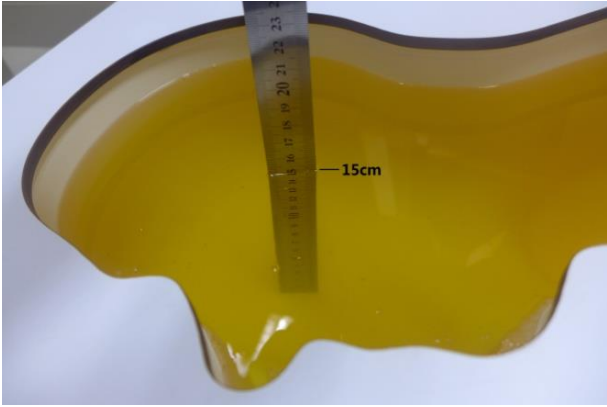


Photo 10: Tissue Simulant Liquid for Body 2600

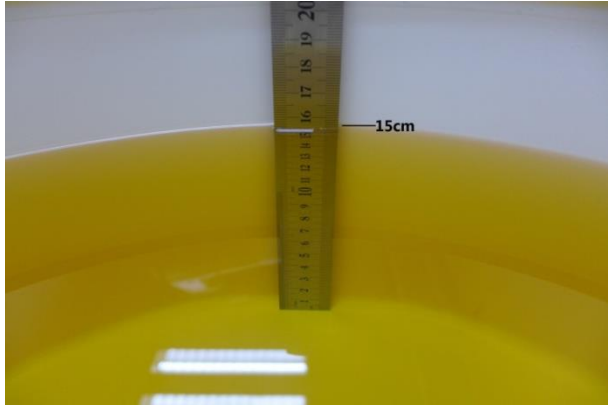


Photo 11: Tissue Simulant Liquid for Head 5G

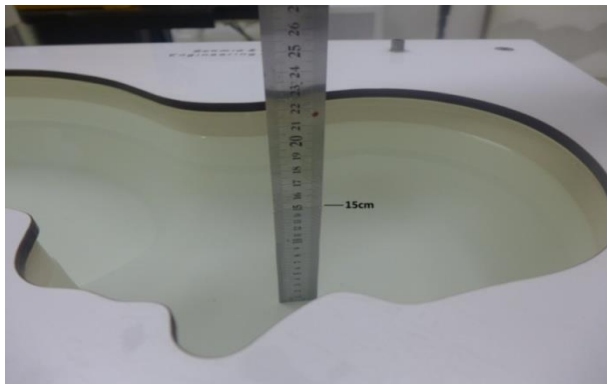
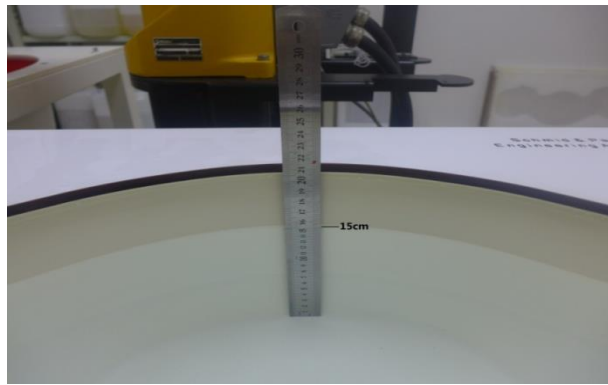
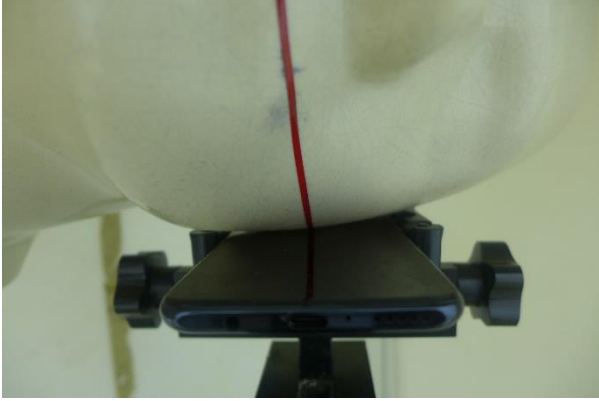
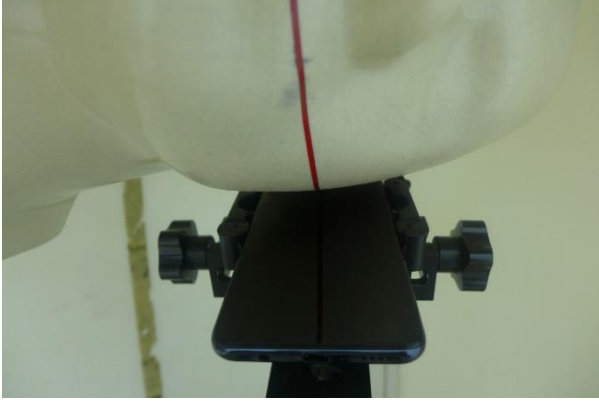
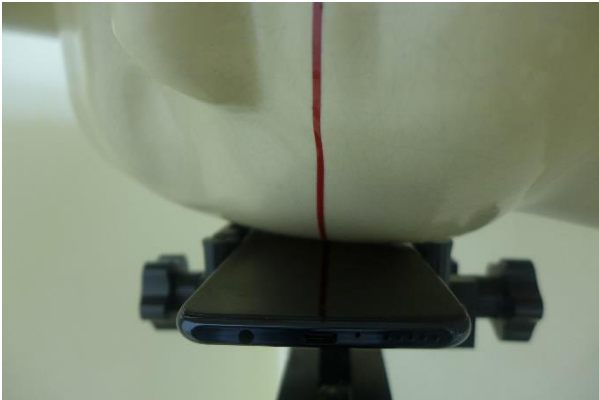
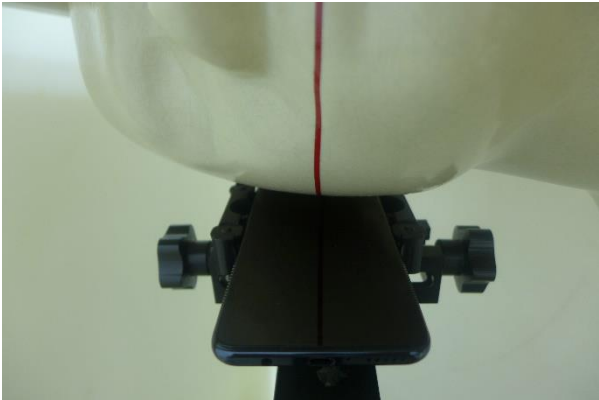

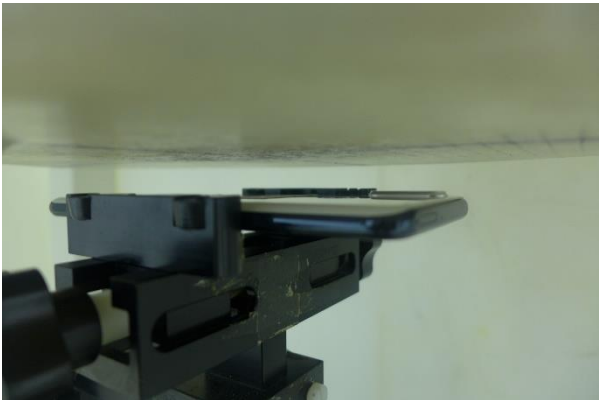


Photo 12: Tissue Simulant Liquid for Body 5G



3. Photographs of EUT test position

<p>Photo 13: Left touch cheek</p>	<p>Photo 14: Left tilted 15 degree</p>
 A photograph showing a white mannequin head with a red vertical line on the left cheek. A black smartphone is held against the cheek by a black mechanical fixture.	 A photograph showing the same setup as Photo 13, but the smartphone is tilted 15 degrees to the left.
<p>Photo 15: Right touch cheek</p>	<p>Photo 16: Right tilted 15 degree</p>
 A photograph showing the white mannequin head with the red line on the right cheek. The black smartphone is held against the cheek by the black fixture.	 A photograph showing the same setup as Photo 15, but the smartphone is tilted 15 degrees to the right.
<p>Photo 17: Front side 15mm</p>	<p>Photo 18: Back side 15mm</p>
 A close-up photograph of the black mechanical fixture holding the smartphone from the front side, with a 15mm scale bar visible in the background.	 A close-up photograph of the black mechanical fixture holding the smartphone from the back side, with a 15mm scale bar visible in the background.



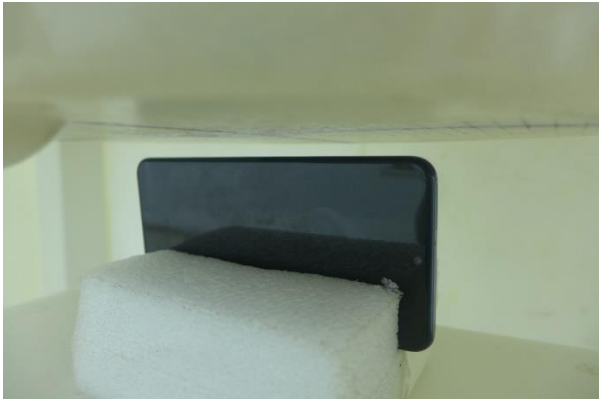
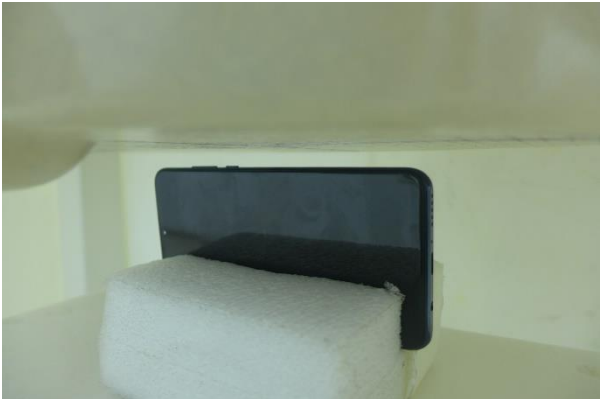









<p>Photo 19: Front side 10mm</p>	<p>Photo 20: Back side 10mm</p>
	
<p>Photo 21: Left side 10mm</p>	<p>Photo 22: Right side 10mm</p>
	
<p>Photo 23: Top side 10mm</p>	<p>Photo 24: Bottom side 10mm</p>
	

Photo 25: Front side 0mm	Photo 26: Back side 0mm
 A close-up photograph showing the front side of a black mechanical component. The component is mounted on a white surface. It features a complex assembly of parts, including a prominent black knob on the left side and a horizontal metal rod extending to the right. The background is a plain, light-colored wall.	 A close-up photograph showing the back side of the same black mechanical component. The view is similar to Photo 25, showing the black knob and the horizontal metal rod from a slightly different perspective. The component is mounted on a white surface against a light-colored wall.
Photo 27: Right side 0mm	Photo 28: Top side 0mm
 A photograph showing the right side of the black mechanical component. The component is resting on a white, rectangular foam block. The black knob is visible on the right side of the component. The background is a light-colored wall.	 A photograph showing the top side of the black mechanical component. The component is resting on a white, rectangular foam block. The black knob is visible on the top surface of the component. The background is a light-colored wall.

4. EUT Constructional Details

Photo 29: Front View	Photo 30: Back View
 A black smartphone is shown vertically against a blue background. A ruler is placed horizontally to the left of the phone, showing its height is approximately 15.5 cm.	 The back of a white smartphone is shown vertically against a blue background. A ruler is placed horizontally to the left of the phone, showing its height is approximately 15.5 cm. The camera lens and flash are visible at the top.
Photo 31: Accessory	NA
 A collection of white accessories, including two pairs of earbuds and their respective charging cables, is laid out on a blue surface. A ruler is placed horizontally to the left of the accessories, showing they are approximately 10 cm wide.	NA