

**Appendix B. SAR Measurement Plots**

Table of contents
GSM850 Head
GSM850 Body
GSM1900 Head
GSM1900 Body
UMTS Band II Head
UMTS Band II Body
UMTS Band IV Head
UMTS Band IV Body
UMTS Band V Head
UMTS Band V Body
LTE Band 2 Head
LTE Band 2 Body
LTE Band 4 Head
LTE Band 4 Body
LTE Band 5 Head
LTE Band 5 Body
LTE Band 7 Head
LTE Band 7 Body
LTE Band 12 Head
LTE Band 12 Body
WiFi 2.4G Head
WiFi 2.4G Body
BT Head

Test Laboratory: HUAWEI SAR/HAC Lab

HRY-LX2 GSM850 190CH Right Cheek-Second Antenna

DUT: HRY-LX2; Type: Smart Phone; Serial: SAR5

Communication System: UID 0, HW-GSM\GPRS\EGPRS-1TS (0); Frequency: 836.6 MHz; Duty Cycle: 1:8.30042

Medium parameters used: $f = 837$ MHz; $\sigma = 0.929$ S/m; $\epsilon_r = 39.847$; $\rho = 1000$ kg/m³

Phantom section: Right Section

DASY Configuration:

- Probe: ES3DV3 - SN3071; ConvF(5.92, 5.92, 5.92) @ 836.6 MHz; Calibrated: 2017-12-18
- Sensor-Surface: 3mm (Mechanical Surface Detection), $z = 2.0, 32.0$
- Electronics: DAE4 Sn1531; Calibrated: 2018-1-3
- Phantom: SAM8; Type: SAM; Serial: 1940
- DASY52 52.10.1(1476); SEMCAD X 14.6.11(7439)

Configuration/Head/Area Scan (9x14x1): Measurement grid: $dx=15$ mm, $dy=15$ mm

Maximum value of SAR (measured) = 0.583 W/kg

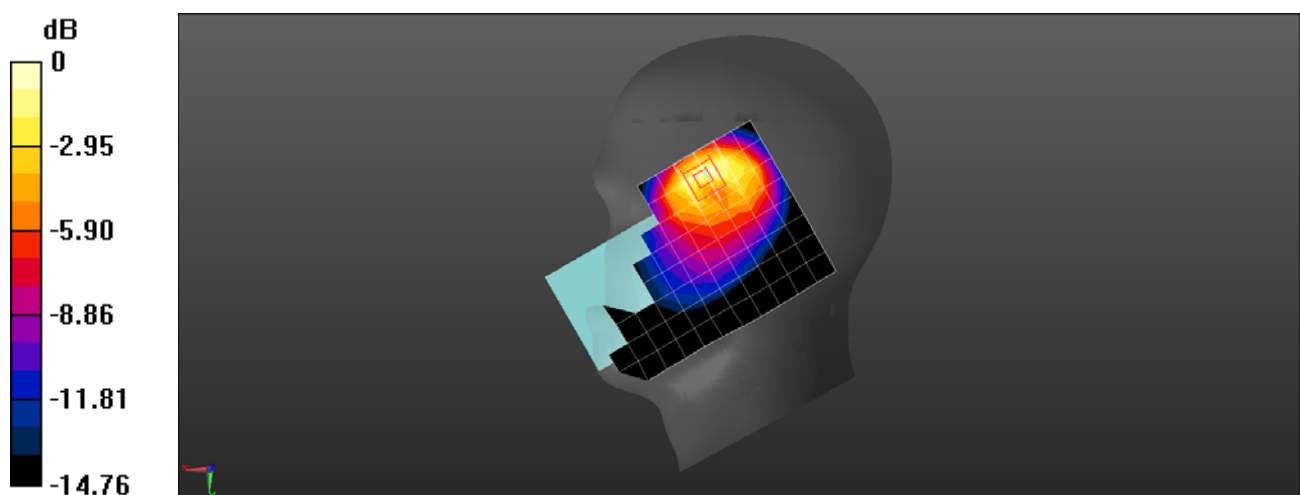
Configuration/Head/Zoom Scan (5x5x5)/Cube 0: Measurement grid: $dx=8$ mm, $dy=8$ mm, $dz=5$ mm

Reference Value = 11.76 V/m; Power Drift = -0.01 dB

Peak SAR (extrapolated) = 1.00 W/kg

SAR(1 g) = 0.484 W/kg; SAR(10 g) = 0.260 W/kg

Maximum value of SAR (measured) = 0.592 W/kg



0 dB = 0.592 W/kg = -2.28 dBW/kg

Test Laboratory: HUAWEI SAR/HAC Lab

HRY-LX2 GSM850 190CH Right Cheek with SIM2-Main Antenna

DUT: HRY-LX2; Type: Smart Phone; Serial: SAR5

Communication System: UID 0, HW-GSM\GPRS\EGPRS-1TS (0); Frequency: 836.6 MHz; Duty Cycle: 1:8.30042

Medium parameters used: $f = 837$ MHz; $\sigma = 0.929$ S/m; $\epsilon_r = 39.847$; $\rho = 1000$ kg/m³

Phantom section: Right Section

DASY Configuration:

- Probe: ES3DV3 - SN3071; ConvF(5.92, 5.92, 5.92) @ 836.6 MHz; Calibrated: 2017-12-18
- Sensor-Surface: 3mm (Mechanical Surface Detection), $z = 2.0, 32.0$
- Electronics: DAE4 Sn1531; Calibrated: 2018-1-3
- Phantom: SAM8; Type: SAM; Serial: 1940
- DASY52 52.10.1(1476); SEMCAD X 14.6.11(7439)

Configuration/Head/Area Scan (9x14x1): Measurement grid: $dx=15$ mm, $dy=15$ mm

Maximum value of SAR (measured) = 0.0301 W/kg

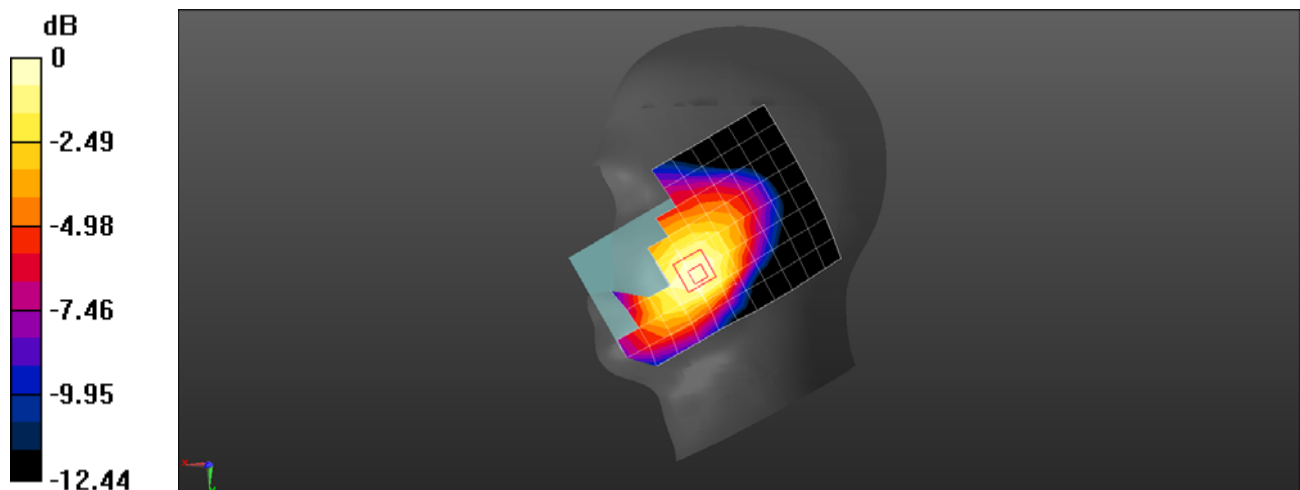
Configuration/Head/Zoom Scan (6x6x5)/Cube 0: Measurement grid: $dx=8$ mm, $dy=8$ mm, $dz=5$ mm

Reference Value = 1.965 V/m; Power Drift = 0.09 dB

Peak SAR (extrapolated) = 0.0360 W/kg

SAR(1 g) = 0.028 W/kg; SAR(10 g) = 0.021 W/kg

Maximum value of SAR (measured) = 0.0305 W/kg



0 dB = 0.0305 W/kg = -15.16 dBW/kg

Test Laboratory: HUAWEI SAR/HAC Lab

HRY-LX2 GSM850 190CH Back Side 15mm with Battery4-Second Antenna

DUT: HRY-LX2; Type: Smart Phone; Serial: SAR3

Communication System: UID 0, HW-GSM\GPRS\EGPRS-1TS (0); Frequency: 836.6 MHz; Duty Cycle: 1:8.30042

Medium parameters used: $f = 837$ MHz; $\sigma = 1.013$ S/m; $\epsilon_r = 54.858$; $\rho = 1000$ kg/m³

Phantom section: Flat Section

DASY Configuration:

- Probe: EX3DV4 - SN7505; ConvF(9.73, 9.73, 9.73) @ 836.6 MHz; Calibrated: 2018-6-12
- Sensor-Surface: 1.4mm (Mechanical Surface Detection), $z = 1.0, 31.0$
- Electronics: DAE4 Sn1235; Calibrated: 2017-11-16
- Phantom: SAM6; Type: SAM; Serial: 1894
- DASY52 52.10.1(1476); SEMCAD X 14.6.11(7439)

Configuration/Body/Area Scan (9x15x1): Measurement grid: $dx=15$ mm, $dy=15$ mm

Maximum value of SAR (measured) = 0.422 W/kg

Configuration/Body/Zoom Scan (5x6x7)/Cube 0: Measurement grid: $dx=8$ mm, $dy=8$ mm, $dz=5$ mm

Reference Value = 17.50 V/m; Power Drift = -0.18 dB

Peak SAR (extrapolated) = 0.434 W/kg

SAR(1 g) = 0.326 W/kg; SAR(10 g) = 0.224 W/kg

Maximum value of SAR (measured) = 0.403 W/kg

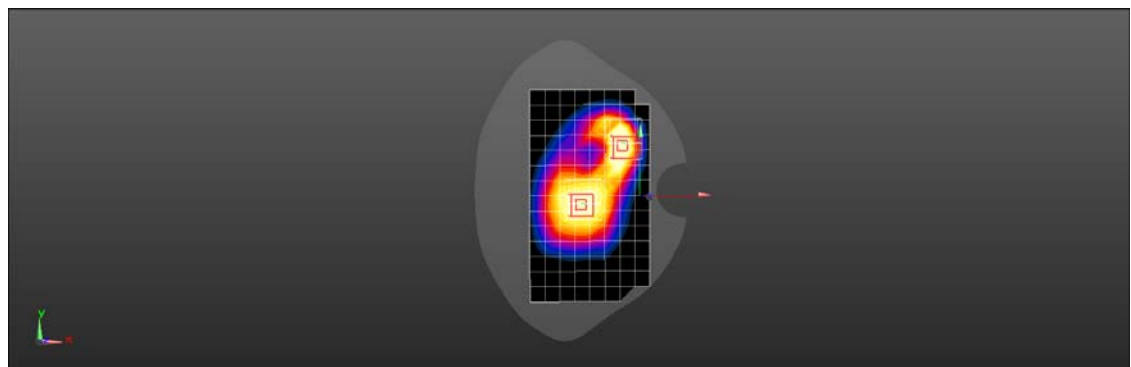
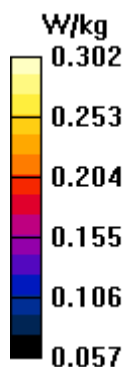
Configuration/Body/Zoom Scan (5x6x7)/Cube 1: Measurement grid: $dx=8$ mm, $dy=8$ mm, $dz=5$ mm

Reference Value = 17.50 V/m; Power Drift = -0.18 dB

Peak SAR (extrapolated) = 0.319 W/kg

SAR(1 g) = 0.264 W/kg; SAR(10 g) = 0.210 W/kg

Maximum value of SAR (measured) = 0.302 W/kg



Test Laboratory: HUAWEI SAR/HAC Lab

HRY-LX2 GSM850 190CH Back Side 15mm with Battery3-Main Antenna

DUT: HRY-LX2; Type: Smart Phone; Serial: SAR3

Communication System: UID 0, HW-GSM\GPRS\EGPRS-1TS (0); Frequency: 836.6 MHz; Duty Cycle: 1:8.30042

Medium parameters used: $f = 837$ MHz; $\sigma = 1.013$ S/m; $\epsilon_r = 54.858$; $\rho = 1000$ kg/m³

Phantom section: Flat Section

DASY Configuration:

- Probe: EX3DV4 - SN7505; ConvF(9.73, 9.73, 9.73) @ 836.6 MHz; Calibrated: 2018-6-12
- Sensor-Surface: 1.4mm (Mechanical Surface Detection), $z = 1.0, 31.0$
- Electronics: DAE4 Sn1235; Calibrated: 2017-11-16
- Phantom: SAM6; Type: SAM; Serial: 1894
- DASY52 52.10.1(1476); SEMCAD X 14.6.11(7439)

Configuration/Body/Area Scan (9x15x1): Measurement grid: $dx=15$ mm, $dy=15$ mm

Maximum value of SAR (measured) = 0.142 W/kg

Configuration/Body/Zoom Scan (7x6x7)/Cube 0: Measurement grid: $dx=8$ mm, $dy=8$ mm, $dz=5$ mm

Reference Value = 5.689 V/m; Power Drift = -0.12 dB

Peak SAR (extrapolated) = 0.144 W/kg

SAR(1 g) = 0.102 W/kg; SAR(10 g) = 0.071 W/kg

Maximum value of SAR (measured) = 0.129 W/kg

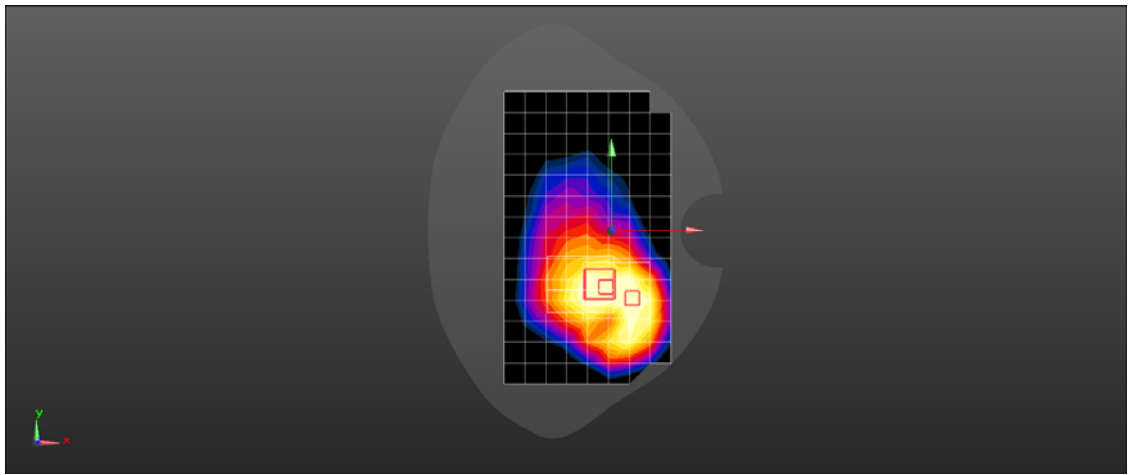
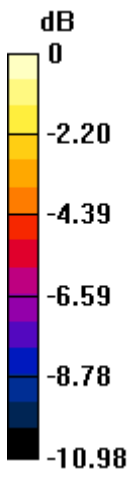
Configuration/Body/Zoom Scan (7x6x7)/Cube 1: Measurement grid: $dx=8$ mm, $dy=8$ mm, $dz=5$ mm

Reference Value = 5.689 V/m; Power Drift = -0.12 dB

Peak SAR (extrapolated) = 0.110 W/kg

SAR(1 g) = 0.096 W/kg; SAR(10 g) = 0.071 W/kg

Maximum value of SAR (measured) = 0.108 W/kg



0 dB = 0.108 W/kg = -9.67 dBW/kg

Test Laboratory: HUAWEI SAR/HAC Lab

HRY-LX2 GSM850 GPRS 2TS 190CH Left Side 10mm with Battery2-Second Antenna

DUT: HRY-LX2; Type: Smart Phone; Serial: SAR3

Communication System: UID 0, HW-GSM\GPRS\EGPRS-2TS (0); Frequency: 836.6 MHz; Duty Cycle: 1:4.10015

Medium parameters used: $f = 837$ MHz; $\sigma = 1.013$ S/m; $\epsilon_r = 54.858$; $\rho = 1000$ kg/m³

Phantom section: Flat Section

DASY Configuration:

- Probe: EX3DV4 - SN7505; ConvF(9.73, 9.73, 9.73) @ 836.6 MHz; Calibrated: 2018-6-12
- Sensor-Surface: 1.4mm (Mechanical Surface Detection), $z = 1.0, 31.0$
- Electronics: DAE4 Sn1235; Calibrated: 2017-11-16
- Phantom: SAM6; Type: SAM; Serial: 1894
- DASY52 52.10.1(1476); SEMCAD X 14.6.11(7439)

Configuration/Body/Area Scan (6x15x1): Measurement grid: $dx=15$ mm, $dy=15$ mm

Maximum value of SAR (measured) = 0.626 W/kg

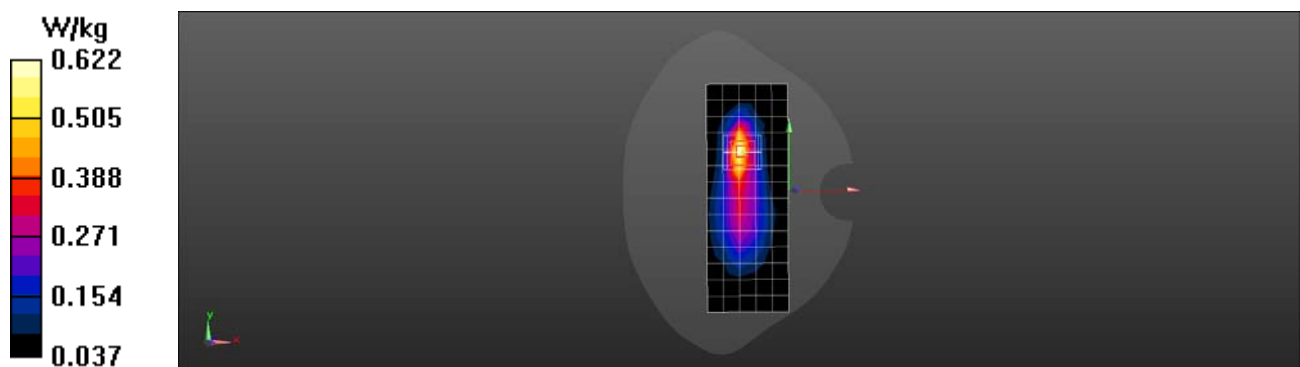
Configuration/Body/Zoom Scan (5x5x7)/Cube 0: Measurement grid: $dx=8$ mm, $dy=8$ mm, $dz=5$ mm

Reference Value = 23.04 V/m; Power Drift = -0.12 dB

Peak SAR (extrapolated) = 0.705 W/kg

SAR(1 g) = 0.449 W/kg; SAR(10 g) = 0.269 W/kg

Maximum value of SAR (measured) = 0.622 W/kg



Test Laboratory: HUAWEI SAR/HAC Lab

HRY-LX2 GSM850 GPRS 2TS 190CH Back Side 10mm with Battery2-Main Antenna

DUT: HRY-LX2; Type: Smart Phone; Serial: SAR3

Communication System: UID 0, HW-GSM\GPRS\EGPRS-2TS (0); Frequency: 836.6 MHz; Duty Cycle: 1:4.10015

Medium parameters used: $f = 837$ MHz; $\sigma = 1.013$ S/m; $\epsilon_r = 54.858$; $\rho = 1000$ kg/m³

Phantom section: Flat Section

DASY Configuration:

- Probe: EX3DV4 - SN7505; ConvF(9.73, 9.73, 9.73) @ 836.6 MHz; Calibrated: 2018-6-12
- Sensor-Surface: 1.4mm (Mechanical Surface Detection), $z = 1.0, 31.0$
- Electronics: DAE4 Sn1235; Calibrated: 2017-11-16
- Phantom: SAM6; Type: SAM; Serial: 1894
- DASY52 52.10.1(1476); SEMCAD X 14.6.11(7439)

Configuration/Body/Area Scan (9x15x1): Measurement grid: $dx=15$ mm, $dy=15$ mm
Maximum value of SAR (measured) = 0.220 W/kg

Configuration/Body/Zoom Scan (5x6x7)/Cube 0: Measurement grid: $dx=8$ mm, $dy=8$ mm, $dz=5$ mm

Reference Value = 6.940 V/m; Power Drift = -0.12 dB

Peak SAR (extrapolated) = 0.305 W/kg

SAR(1 g) = 0.199 W/kg; SAR(10 g) = 0.122 W/kg

Maximum value of SAR (measured) = 0.260 W/kg

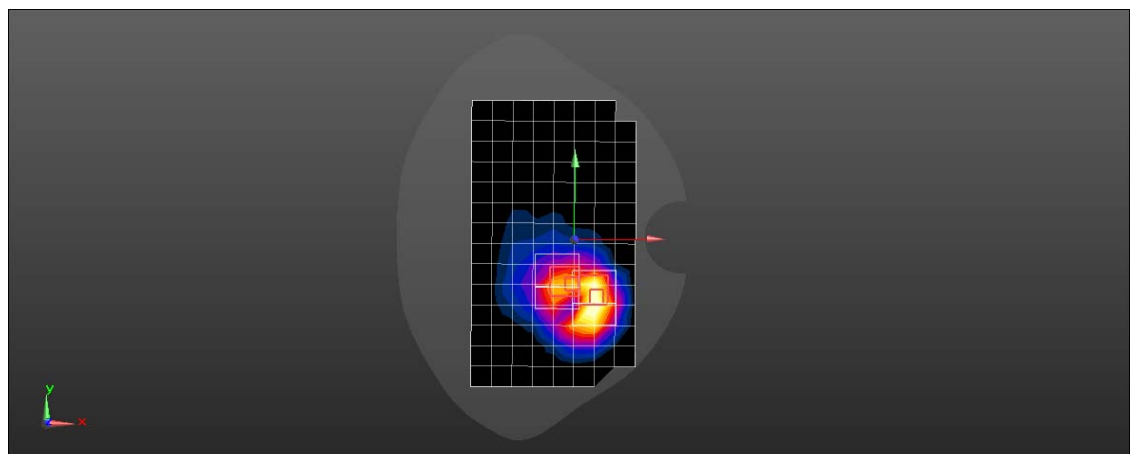
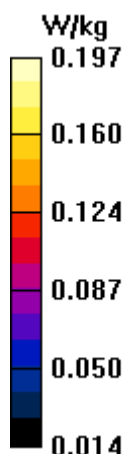
Configuration/Body/Zoom Scan (5x6x7)/Cube 1: Measurement grid: $dx=8$ mm, $dy=8$ mm, $dz=5$ mm

Reference Value = 6.940 V/m; Power Drift = -0.12 dB

Peak SAR (extrapolated) = 0.204 W/kg

SAR(1 g) = 0.159 W/kg; SAR(10 g) = 0.111 W/kg

Maximum value of SAR (measured) = 0.197 W/kg



Test Laboratory: HUAWEI SAR/HAC Lab

HRY-LX2 GSM1900 661CH Right Cheek with Battery2-Second Antenna

DUT: HRY-LX2; Type: Smart Phone; Serial: SAR5

Communication System: UID 0, HW-GSM\GPRS\EGPRS-1TS (0); Frequency: 1880 MHz; Duty Cycle: 1:8.30042

Medium parameters used: $f = 1880$ MHz; $\sigma = 1.442$ S/m; $\epsilon_r = 38.801$; $\rho = 1000$ kg/m³

Phantom section: Right Section

DASY Configuration:

- Probe: ES3DV3 - SN3071; ConvF(4.87, 4.87, 4.87) @ 1880 MHz; Calibrated: 2017-12-18
- Sensor-Surface: 3mm (Mechanical Surface Detection), $z = 2.0, 32.0$
- Electronics: DAE4 Sn1531; Calibrated: 2018-1-3
- Phantom: SAM8; Type: SAM; Serial: 1940
- DASY52 52.10.1(1476); SEMCAD X 14.6.11(7439)

Configuration/Head/Area Scan (9x14x1): Measurement grid: $dx=15$ mm, $dy=15$ mm

Maximum value of SAR (measured) = 0.0381 W/kg

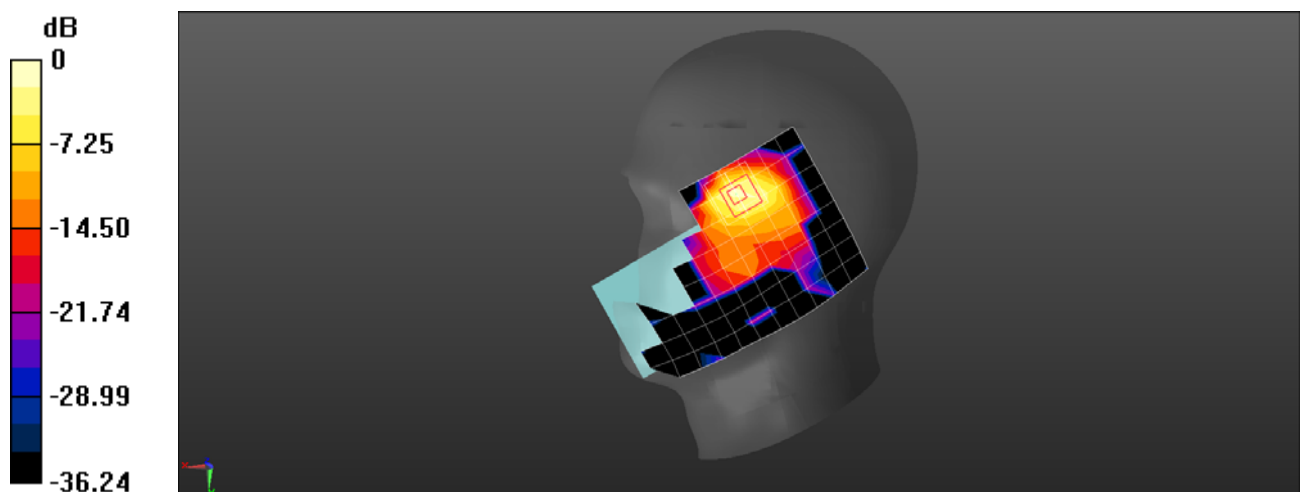
Configuration/Head/Zoom Scan (5x5x5)/Cube 0: Measurement grid: $dx=8$ mm, $dy=8$ mm, $dz=5$ mm

Reference Value = 1.479 V/m; Power Drift = 0.06 dB

Peak SAR (extrapolated) = 0.0880 W/kg

SAR(1 g) = 0.039 W/kg; SAR(10 g) = 0.018 W/kg

Maximum value of SAR (measured) = 0.0536 W/kg



0 dB = 0.0536 W/kg = -12.71 dBW/kg

Test Laboratory: HUAWEI SAR/HAC Lab

HRY-LX2 GSM1900 661CH Right Cheek with Battery2-Main Antenna

DUT: HRY-LX2; Type: Smart Phone; Serial: SAR5

Communication System: UID 0, HW-GSM\GPRS\EGPRS-1TS (0); Frequency: 1880 MHz; Duty Cycle: 1:8.30042

Medium parameters used: $f = 1880$ MHz; $\sigma = 1.442$ S/m; $\epsilon_r = 38.801$; $\rho = 1000$ kg/m³

Phantom section: Right Section

DASY Configuration:

- Probe: ES3DV3 - SN3071; ConvF(4.87, 4.87, 4.87) @ 1880 MHz; Calibrated: 2017-12-18
- Sensor-Surface: 3mm (Mechanical Surface Detection), $z = 2.0, 32.0$
- Electronics: DAE4 Sn1531; Calibrated: 2018-1-3
- Phantom: SAM8; Type: SAM; Serial: 1940
- DASY52 52.10.1(1476); SEMCAD X 14.6.11(7439)

Configuration/Head/Area Scan (9x14x1): Measurement grid: $dx=15$ mm, $dy=15$ mm

Maximum value of SAR (measured) = 0.0791 W/kg

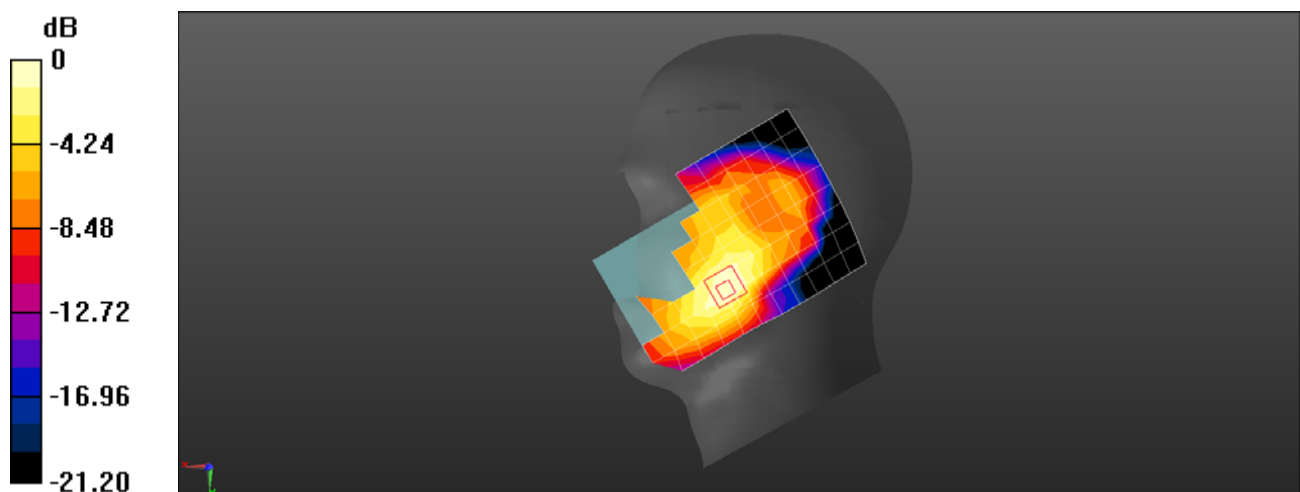
Configuration/Head/Zoom Scan (5x5x5)/Cube 0: Measurement grid: $dx=8$ mm, $dy=8$ mm, $dz=5$ mm

Reference Value = 3.991 V/m; Power Drift = -0.05 dB

Peak SAR (extrapolated) = 0.103 W/kg

SAR(1 g) = 0.068 W/kg; SAR(10 g) = 0.042 W/kg

Maximum value of SAR (measured) = 0.0792 W/kg



0 dB = 0.0792 W/kg = -11.01 dBW/kg

Test Laboratory: HUAWEI SAR/HAC Lab

HRY-LX2 GSM1900 661CH Back Side 15mm with Battery2-Second Antenna

DUT: HRY-LX2; Type: Smart Phone; Serial: SAR3

Communication System: UID 0, HW-GSM\GPRS\EGPRS-1TS (0); Frequency: 1880 MHz; Duty Cycle: 1:8.30042

Medium parameters used: $f = 1880$ MHz; $\sigma = 1.566$ S/m; $\epsilon_r = 53.125$; $\rho = 1000$ kg/m³

Phantom section: Flat Section

DASY Configuration:

- Probe: EX3DV4 - SN7505; ConvF(7.87, 7.87, 7.87) @ 1880 MHz; Calibrated: 2018-6-12
- Sensor-Surface: 1.4mm (Mechanical Surface Detection), $z = 1.0, 31.0$
- Electronics: DAE4 Sn1235; Calibrated: 2017-11-16
- Phantom: SAM6; Type: SAM; Serial: 1894
- DASY52 52.10.1(1476); SEMCAD X 14.6.11(7439)

Configuration/Body/Area Scan (9x15x1): Measurement grid: $dx=15$ mm, $dy=15$ mm

Maximum value of SAR (measured) = 0.00603 W/kg

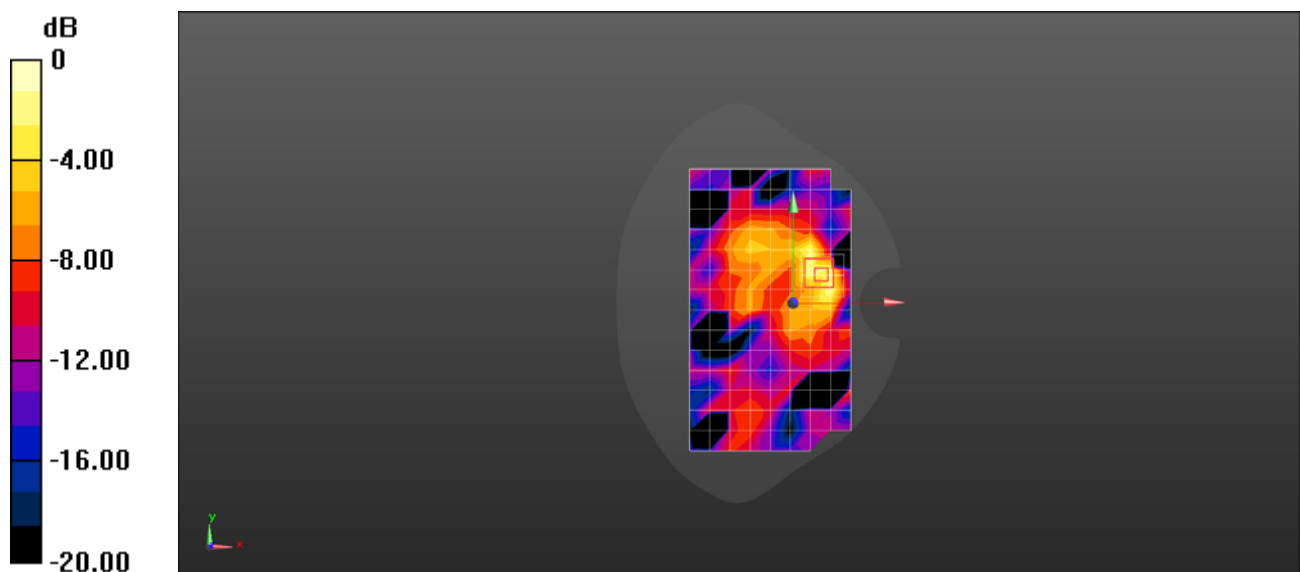
Configuration/Body/Zoom Scan (5x5x7)/Cube 0: Measurement grid: $dx=8$ mm, $dy=8$ mm, $dz=5$ mm

Reference Value = 1.039 V/m; Power Drift = -0.07 dB

Peak SAR (extrapolated) = 0.0260 W/kg

SAR(1 g) = 0.00554 W/kg; SAR(10 g) = 0.00152 W/kg

Maximum value of SAR (measured) = 0.00804 W/kg



0 dB = 0.00804 W/kg = -20.95 dBW/kg

Test Laboratory: HUAWEI SAR/HAC Lab

HRY-LX2 GSM1900 661CH Back Side 15mm with SIM2-Main Antenna

DUT: HRY-LX2; Type: Smart Phone; Serial: SAR3

Communication System: UID 0, HW-GSM\GPRS\EGPRS-1TS (0); Frequency: 1880 MHz; Duty Cycle: 1:8.30042

Medium parameters used: $f = 1880$ MHz; $\sigma = 1.553$ S/m; $\epsilon_r = 51.583$; $\rho = 1000$ kg/m³

Phantom section: Flat Section

DASY Configuration:

- Probe: EX3DV4 - SN7505; ConvF(7.87, 7.87, 7.87) @ 1880 MHz; Calibrated: 2018-6-12
- Sensor-Surface: 1.4mm (Mechanical Surface Detection), $z = 1.0, 31.0$
- Electronics: DAE4 Sn1235; Calibrated: 2017-11-16
- Phantom: SAM6; Type: SAM; Serial: 1894
- DASY52 52.10.1(1476); SEMCAD X 14.6.11(7439)

Configuration/Body/Area Scan (9x15x1): Measurement grid: $dx=15$ mm, $dy=15$ mm

Maximum value of SAR (measured) = 0.129 W/kg

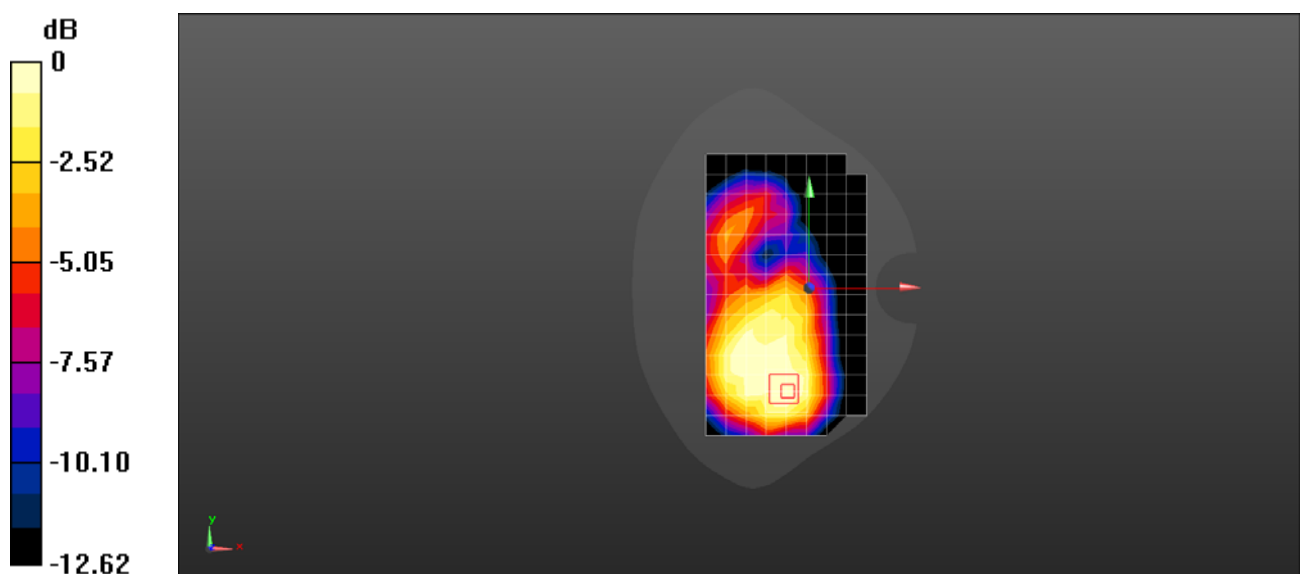
Configuration/Body/Zoom Scan (5x5x7)/Cube 0: Measurement grid: $dx=8$ mm, $dy=8$ mm, $dz=5$ mm

Reference Value = 5.550 V/m; Power Drift = -0.04 dB

Peak SAR (extrapolated) = 0.115 W/kg

SAR(1 g) = 0.091 W/kg; SAR(10 g) = 0.062 W/kg

Maximum value of SAR (measured) = 0.110 W/kg



0 dB = 0.110 W/kg = -9.59 dBW/kg

Test Laboratory: HUAWEI SAR/HAC Lab

HRY-LX2 GSM1900 GPRS 2TS 661CH Back Side 10mm-Second Antenna

DUT: HRY-LX2; Type: Smart Phone; Serial: SAR3

Communication System: UID 0, HW-GSM\GPRS\EGPRS-2TS (0); Frequency: 1880 MHz; Duty Cycle: 1:4.10015

Medium parameters used: $f = 1880$ MHz; $\sigma = 1.566$ S/m; $\epsilon_r = 53.125$; $\rho = 1000$ kg/m³

Phantom section: Flat Section

DASY Configuration:

- Probe: EX3DV4 - SN7505; ConvF(7.87, 7.87, 7.87) @ 1880 MHz; Calibrated: 2018-6-12
- Sensor-Surface: 1.4mm (Mechanical Surface Detection), $z = 1.0, 31.0$
- Electronics: DAE4 Sn1235; Calibrated: 2017-11-16
- Phantom: SAM6; Type: SAM; Serial: 1894
- DASY52 52.10.1(1476); SEMCAD X 14.6.11(7439)

Configuration/Body/Area Scan (9x15x1): Measurement grid: $dx=15$ mm, $dy=15$ mm

Maximum value of SAR (measured) = 0.0168 W/kg

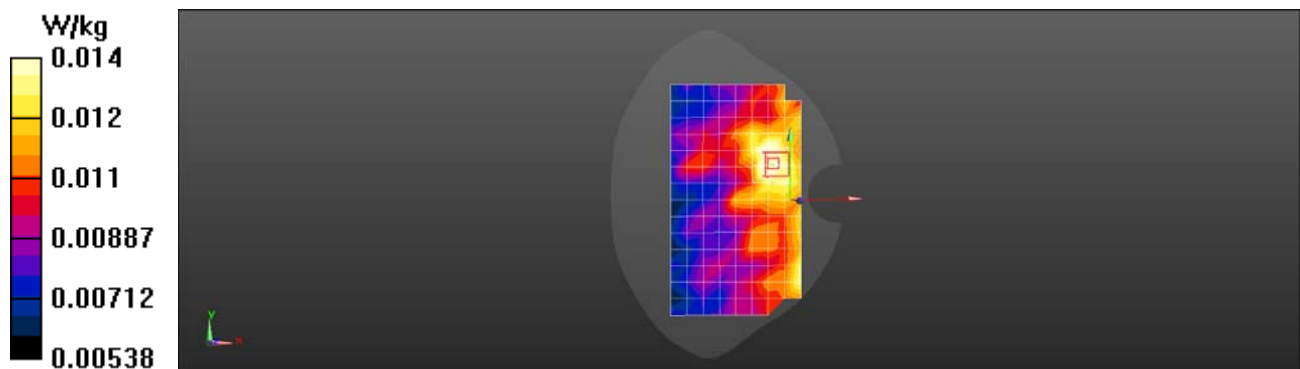
Configuration/Body/Zoom Scan (5x5x7)/Cube 0: Measurement grid: $dx=8$ mm, $dy=8$ mm, $dz=5$ mm

Reference Value = 0.8790 V/m; Power Drift = 0.12 dB

Peak SAR (extrapolated) = 0.0160 W/kg

SAR(1 g) = 0.012 W/kg; SAR(10 g) = 0.00884 W/kg

Maximum value of SAR (measured) = 0.0141 W/kg



Test Laboratory: HUAWEI SAR/HAC Lab

HRY-LX2 GSM1900 GPRS 2TS 661CH Bottom Side 10mm with Battery4-Main Antenna

DUT: HRY-LX2; Type: Smart Phone; Serial: SAR3

Communication System: UID 0, HW-GSM\GPRS\EGPRS-2TS (0); Frequency: 1880 MHz; Duty Cycle: 1:4.10015

Medium parameters used: $f = 1880$ MHz; $\sigma = 1.553$ S/m; $\epsilon_r = 51.583$; $\rho = 1000$ kg/m³

Phantom section: Flat Section

DASY Configuration:

- Probe: EX3DV4 - SN7505; ConvF(7.87, 7.87, 7.87) @ 1880 MHz; Calibrated: 2018-6-12
- Sensor-Surface: 1.4mm (Mechanical Surface Detection), $z = 1.0, 31.0$
- Electronics: DAE4 Sn1235; Calibrated: 2017-11-16
- Phantom: SAM6; Type: SAM; Serial: 1894
- DASY52 52.10.1(1476); SEMCAD X 14.6.11(7439)

Configuration/Body/Area Scan (6x11x1): Measurement grid: $dx=15$ mm, $dy=15$ mm

Maximum value of SAR (measured) = 0.139 W/kg

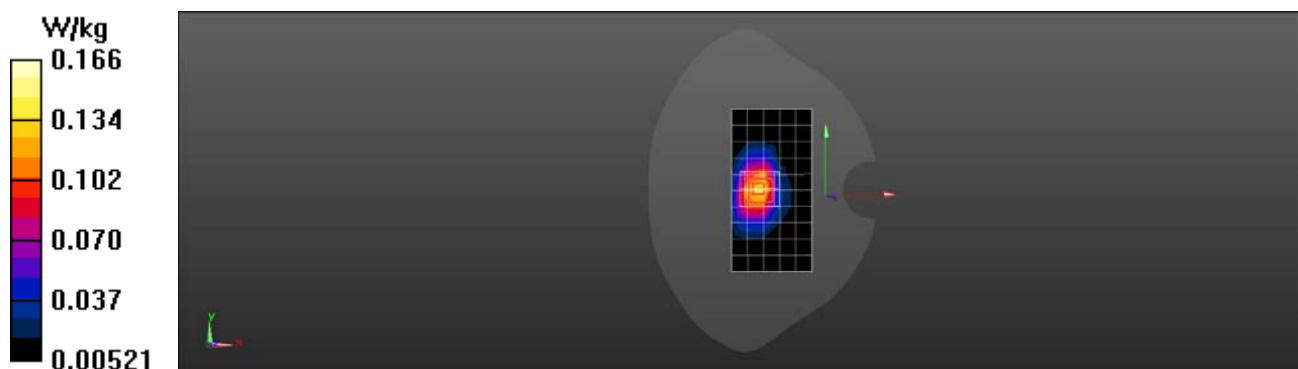
Configuration/Body/Zoom Scan (5x5x7)/Cube 0: Measurement grid: $dx=8$ mm, $dy=8$ mm, $dz=5$ mm

Reference Value = 7.021 V/m; Power Drift = -0.11 dB

Peak SAR (extrapolated) = 0.187 W/kg

SAR(1 g) = 0.119 W/kg; SAR(10 g) = 0.070 W/kg

Maximum value of SAR (measured) = 0.166 W/kg



Test Laboratory: HUAWEI SAR/HAC Lab

HRY-LX2 UMTS Band II 9400CH Right Cheek with Battery2-Second Antenna

DUT: HRY-LX2; Type: Smart Phone; Serial: SAR5

Communication System: UID 0, HW-UMTS-FDD(WCDMA) (0); Frequency: 1880 MHz; Duty Cycle: 1:1

Medium parameters used: $f = 1880$ MHz; $\sigma = 1.442$ S/m; $\epsilon_r = 38.801$; $\rho = 1000$ kg/m³

Phantom section: Right Section

DASY Configuration:

- Probe: ES3DV3 - SN3071; ConvF(4.87, 4.87, 4.87) @ 1880 MHz; Calibrated: 2017-12-18
- Sensor-Surface: 3mm (Mechanical Surface Detection), $z = 2.0, 32.0$
- Electronics: DAE4 Sn1531; Calibrated: 2018-1-3
- Phantom: SAM8; Type: SAM; Serial: 1940
- DASY52 52.10.1(1476); SEMCAD X 14.6.11(7439)

Configuration/Head/Area Scan (9x14x1): Measurement grid: $dx=15$ mm, $dy=15$ mm

Maximum value of SAR (measured) = 0.195 W/kg

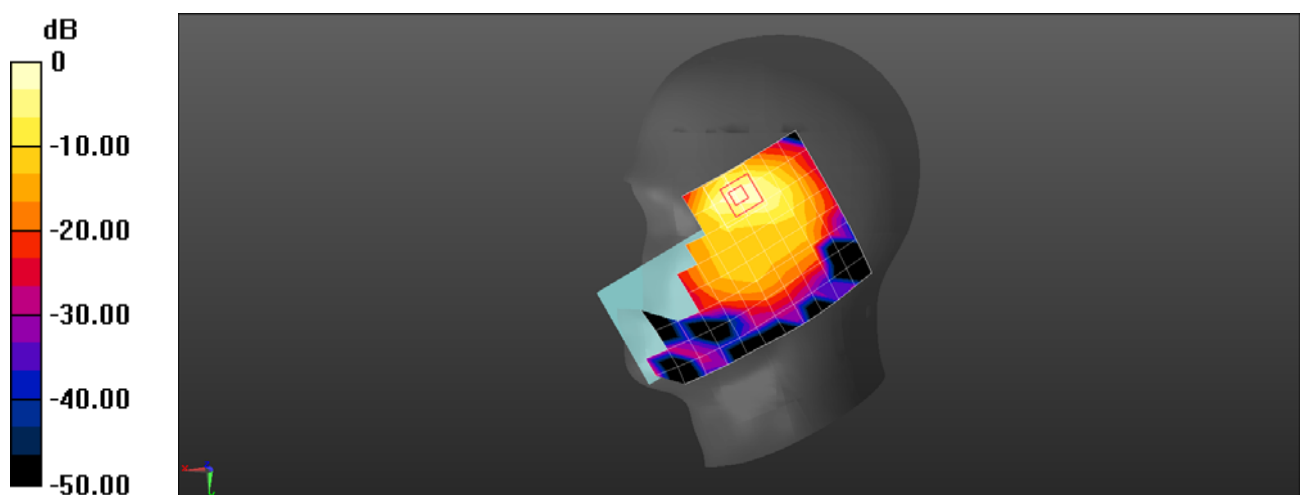
Configuration/Head/Zoom Scan (5x5x5)/Cube 0: Measurement grid: $dx=8$ mm, $dy=8$ mm, $dz=5$ mm

Reference Value = 3.017 V/m; Power Drift = 0.18 dB

Peak SAR (extrapolated) = 0.316 W/kg

SAR(1 g) = 0.142 W/kg; SAR(10 g) = 0.065 W/kg

Maximum value of SAR (measured) = 0.202 W/kg



0 dB = 0.202 W/kg = -6.95 dBW/kg

Test Laboratory: HUAWEI SAR/HAC Lab

HRY-LX2 UMTS Band II 9400CH Right Cheek with Battery2-Main Antenna

DUT: HRY-LX2; Type: Smart Phone; Serial: SAR5

Communication System: UID 0, HW-UMTS-FDD(WCDMA) (0); Frequency: 1880 MHz; Duty Cycle: 1:1

Medium parameters used: $f = 1880$ MHz; $\sigma = 1.442$ S/m; $\epsilon_r = 38.801$; $\rho = 1000$ kg/m³

Phantom section: Right Section

DASY Configuration:

- Probe: ES3DV3 - SN3071; ConvF(4.87, 4.87, 4.87) @ 1880 MHz; Calibrated: 2017-12-18
- Sensor-Surface: 3mm (Mechanical Surface Detection), $z = 2.0, 32.0$
- Electronics: DAE4 Sn1531; Calibrated: 2018-1-3
- Phantom: SAM8; Type: SAM; Serial: 1940
- DASY52 52.10.1(1476); SEMCAD X 14.6.11(7439)

Configuration/Head/Area Scan (9x14x1): Measurement grid: $dx=15$ mm, $dy=15$ mm

Maximum value of SAR (measured) = 0.152 W/kg

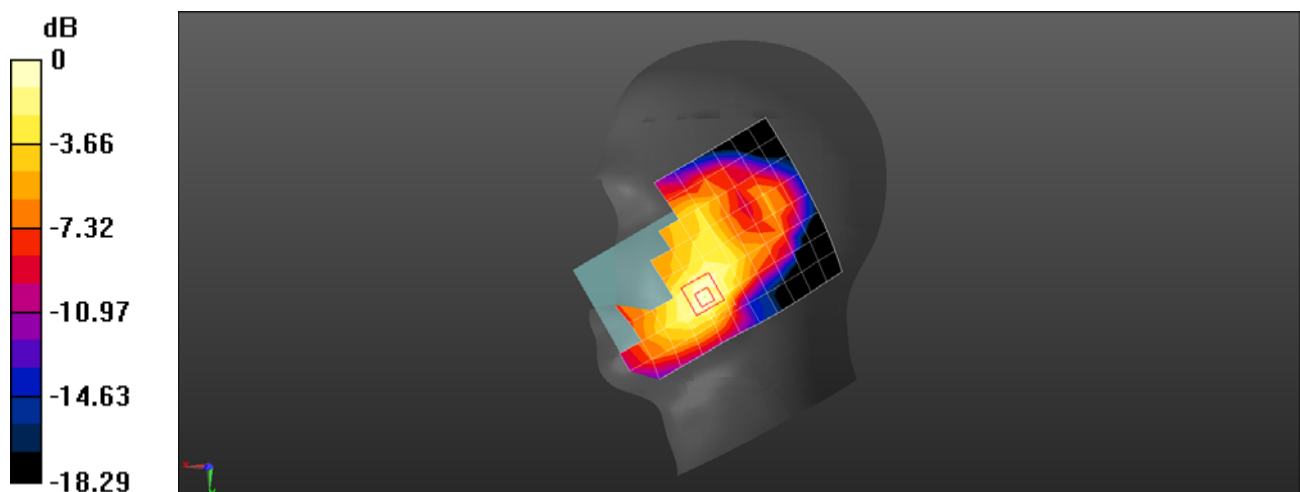
Configuration/Head/Zoom Scan (5x5x5)/Cube 0: Measurement grid: $dx=8$ mm, $dy=8$ mm, $dz=5$ mm

Reference Value = 5.929 V/m; Power Drift = 0.14 dB

Peak SAR (extrapolated) = 0.205 W/kg

SAR(1 g) = 0.136 W/kg; SAR(10 g) = 0.085 W/kg

Maximum value of SAR (measured) = 0.162 W/kg



0 dB = 0.162 W/kg = -7.90 dBW/kg

Test Laboratory: HUAWEI SAR/HAC Lab

HRY-LX2 UMTS Band II 9400CH Back Side 15mm with Battery2-Second Antenna

DUT: HRY-LX2; Type: Smart Phone; Serial: SAR3

Communication System: UID 0, HW-UMTS-FDD(WCDMA) (0); Frequency: 1880 MHz; Duty Cycle: 1:1

Medium parameters used: $f = 1880$ MHz; $\sigma = 1.553$ S/m; $\epsilon_r = 51.583$; $\rho = 1000$ kg/m³

Phantom section: Flat Section

DASY Configuration:

- Probe: EX3DV4 - SN7505; ConvF(7.87, 7.87, 7.87) @ 1880 MHz; Calibrated: 2018-6-12
- Sensor-Surface: 1.4mm (Mechanical Surface Detection), $z = 1.0, 31.0$
- Electronics: DAE4 Sn1235; Calibrated: 2017-11-16
- Phantom: SAM6; Type: SAM; Serial: 1894
- DASY52 52.10.1(1476); SEMCAD X 14.6.11(7439)

Configuration/Body/Area Scan (9x15x1): Measurement grid: $dx=15$ mm, $dy=15$ mm

Maximum value of SAR (measured) = 0.0289 W/kg

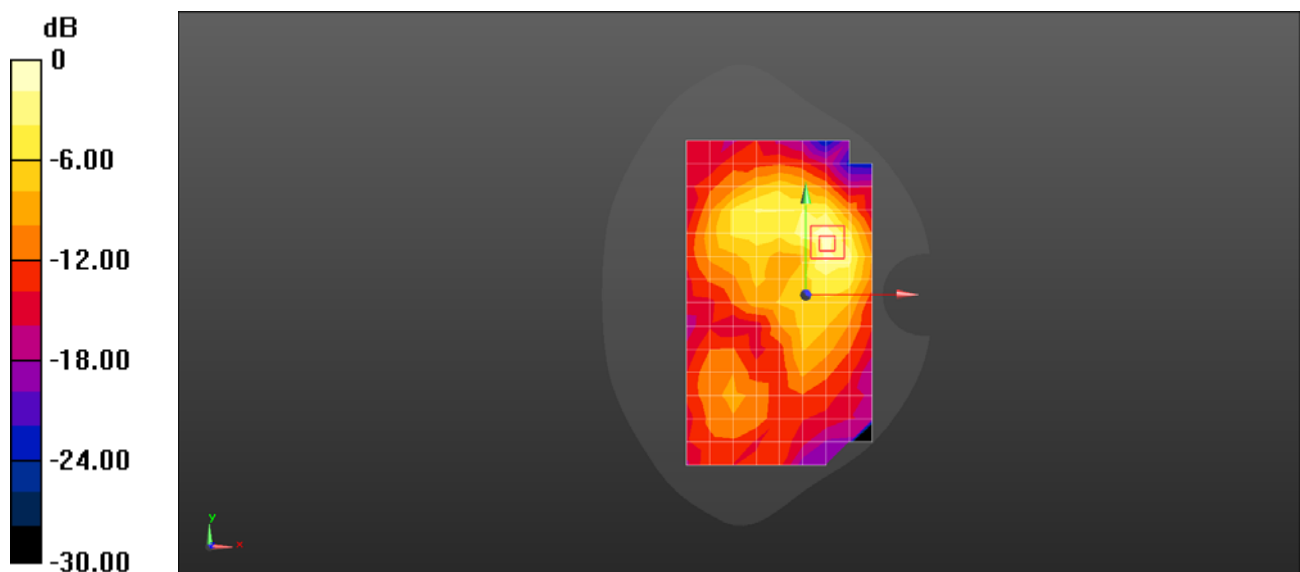
Configuration/Body/Zoom Scan (5x5x7)/Cube 0: Measurement grid: $dx=8$ mm, $dy=8$ mm, $dz=5$ mm

Reference Value = 2.184 V/m; Power Drift = -0.14 dB

Peak SAR (extrapolated) = 0.0380 W/kg

SAR(1 g) = 0.0235 W/kg; SAR(10 g) = 0.013 W/kg

Maximum value of SAR (measured) = 0.0325 W/kg



0 dB = 0.0325 W/kg = -14.88 dBW/kg

Test Laboratory: HUAWEI SAR/HAC Lab

HRY-LX2 UMTS Band II 9400CH Back Side 15mm with Battery4-Main Antenna

DUT: HRY-LX2; Type: Smart Phone; Serial: SAR3

Communication System: UID 0, HW-UMTS-FDD(WCDMA) (0); Frequency: 1880 MHz; Duty Cycle: 1:1

Medium parameters used: $f = 1880$ MHz; $\sigma = 1.553$ S/m; $\epsilon_r = 51.583$; $\rho = 1000$ kg/m³

Phantom section: Flat Section

DASY Configuration:

- Probe: EX3DV4 - SN7505; ConvF(7.87, 7.87, 7.87) @ 1880 MHz; Calibrated: 2018-6-12
- Sensor-Surface: 1.4mm (Mechanical Surface Detection), $z = 1.0, 31.0$
- Electronics: DAE4 Sn1235; Calibrated: 2017-11-16
- Phantom: SAM6; Type: SAM; Serial: 1894
- DASY52 52.10.1(1476); SEMCAD X 14.6.11(7439)

Configuration/Body/Area Scan (9x15x1): Measurement grid: $dx=15$ mm, $dy=15$ mm

Maximum value of SAR (measured) = 0.224 W/kg

Configuration/Body/Zoom Scan (5x5x7)/Cube 0: Measurement grid: $dx=8$ mm, $dy=8$ mm, $dz=5$ mm

Reference Value = 7.313 V/m; Power Drift = -0.14 dB

Peak SAR (extrapolated) = 0.200 W/kg

SAR(1 g) = 0.159 W/kg; SAR(10 g) = 0.110 W/kg

Maximum value of SAR (measured) = 0.191 W/kg

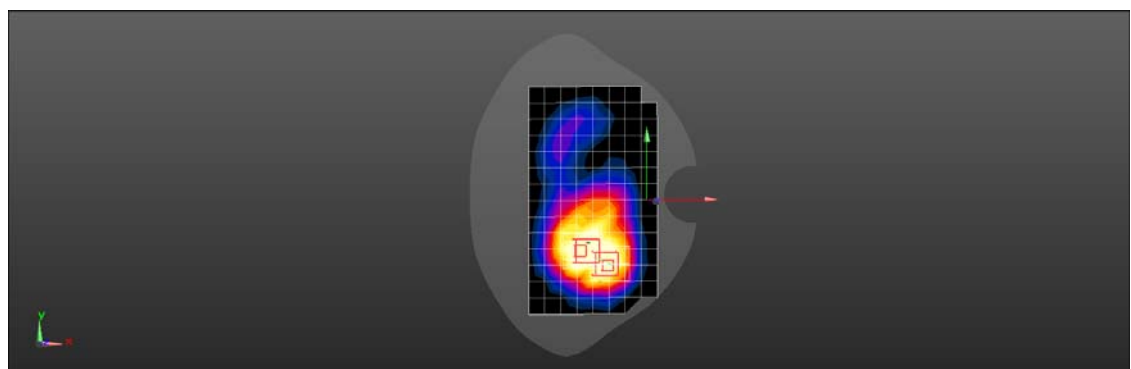
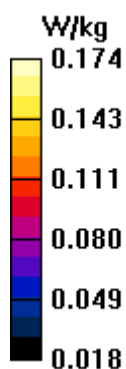
Configuration/Body/Zoom Scan (5x5x7)/Cube 1: Measurement grid: $dx=8$ mm, $dy=8$ mm, $dz=5$ mm

Reference Value = 7.313 V/m; Power Drift = -0.14 dB

Peak SAR (extrapolated) = 0.179 W/kg

SAR(1 g) = 0.145 W/kg; SAR(10 g) = 0.106 W/kg

Maximum value of SAR (measured) = 0.174 W/kg



Test Laboratory: HUAWEI SAR/HAC Lab

HRY-LX2 UMTS Band II 9400CH Left Side 10mm with Battery4-Second Antenna

DUT: HRY-LX2; Type: Smart Phone; Serial: SAR3

Communication System: UID 0, HW-UMTS-FDD(WCDMA) (0); Frequency: 1880 MHz; Duty Cycle: 1:1

Medium parameters used: $f = 1880$ MHz; $\sigma = 1.553$ S/m; $\epsilon_r = 51.583$; $\rho = 1000$ kg/m³

Phantom section: Flat Section

DASY Configuration:

- Probe: EX3DV4 - SN7505; ConvF(7.87, 7.87, 7.87) @ 1880 MHz; Calibrated: 2018-6-12
- Sensor-Surface: 1.4mm (Mechanical Surface Detection), $z = 1.0, 31.0$
- Electronics: DAE4 Sn1235; Calibrated: 2017-11-16
- Phantom: SAM6; Type: SAM; Serial: 1894
- DASY52 52.10.1(1476); SEMCAD X 14.6.11(7439)

Configuration/Body/Area Scan (6x15x1): Measurement grid: $dx=15$ mm, $dy=15$ mm

Maximum value of SAR (measured) = 0.0915 W/kg

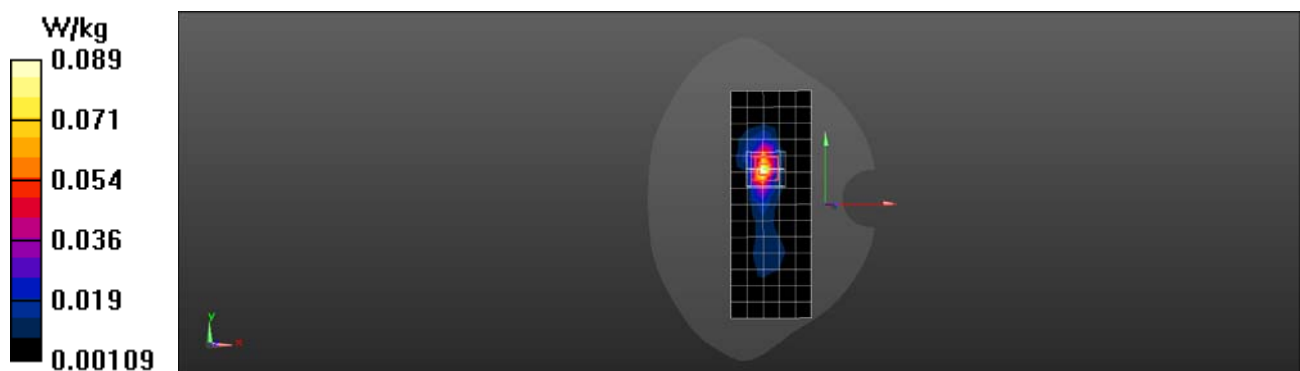
Configuration/Body/Zoom Scan (5x5x7)/Cube 0: Measurement grid: $dx=8$ mm, $dy=8$ mm, $dz=5$ mm

Reference Value = 3.314 V/m; Power Drift = -0.16 dB

Peak SAR (extrapolated) = 0.100 W/kg

SAR(1 g) = 0.058 W/kg; SAR(10 g) = 0.029 W/kg

Maximum value of SAR (measured) = 0.0888 W/kg



Test Laboratory: HUAWEI SAR/HAC Lab

HRY-LX2 UMTS Band II 9400CH Bottom Side 10mm with Battery4-Main Antenna

DUT: HRY-LX2; Type: Smart Phone; Serial: SAR3

Communication System: UID 0, HW-UMTS-FDD(WCDMA) (0); Frequency: 1880 MHz; Duty Cycle: 1:1

Medium parameters used: $f = 1880$ MHz; $\sigma = 1.553$ S/m; $\epsilon_r = 51.583$; $\rho = 1000$ kg/m³

Phantom section: Flat Section

DASY Configuration:

- Probe: EX3DV4 - SN7505; ConvF(7.87, 7.87, 7.87) @ 1880 MHz; Calibrated: 2018-6-12
- Sensor-Surface: 1.4mm (Mechanical Surface Detection), $z = 1.0, 31.0$
- Electronics: DAE4 Sn1235; Calibrated: 2017-11-16
- Phantom: SAM6; Type: SAM; Serial: 1894
- DASY52 52.10.1(1476); SEMCAD X 14.6.11(7439)

Configuration/Body/Area Scan (6x10x1): Measurement grid: $dx=15$ mm, $dy=15$ mm

Maximum value of SAR (measured) = 0.367 W/kg

Configuration/Body/Zoom Scan (5x5x7)/Cube 0: Measurement grid: $dx=8$ mm, $dy=8$ mm, $dz=5$ mm

Reference Value = 15.52 V/m; Power Drift = -0.19 dB

Peak SAR (extrapolated) = 0.426 W/kg

SAR(1 g) = 0.272 W/kg; SAR(10 g) = 0.161 W/kg

Maximum value of SAR (measured) = 0.378 W/kg



Test Laboratory: HUAWEI SAR/HAC Lab

HRY-LX2 UMTS Band IV 1413CH Right Cheek with SIM2-Second Antenna

DUT: HRY-LX2; Type: Smart Phone; Serial: SAR5

Communication System: UID 0, HW-UMTS-FDD(WCDMA) (0); Frequency: 1732.6 MHz; Duty Cycle: 1:1

Medium parameters used: $f = 1733$ MHz; $\sigma = 1.375$ S/m; $\epsilon_r = 39.148$; $\rho = 1000$ kg/m³

Phantom section: Right Section

DASY Configuration:

- Probe: ES3DV3 - SN3071; ConvF(5.08, 5.08, 5.08) @ 1732.6 MHz; Calibrated: 2017-12-18
- Sensor-Surface: 3mm (Mechanical Surface Detection), $z = 2.0, 32.0$
- Electronics: DAE4 Sn1531; Calibrated: 2018-1-3
- Phantom: SAM8; Type: SAM; Serial: 1940
- DASY52 52.10.1(1476); SEMCAD X 14.6.11(7439)

Configuration/Head/Area Scan (9x14x1): Measurement grid: $dx=15$ mm, $dy=15$ mm

Maximum value of SAR (measured) = 0.116 W/kg

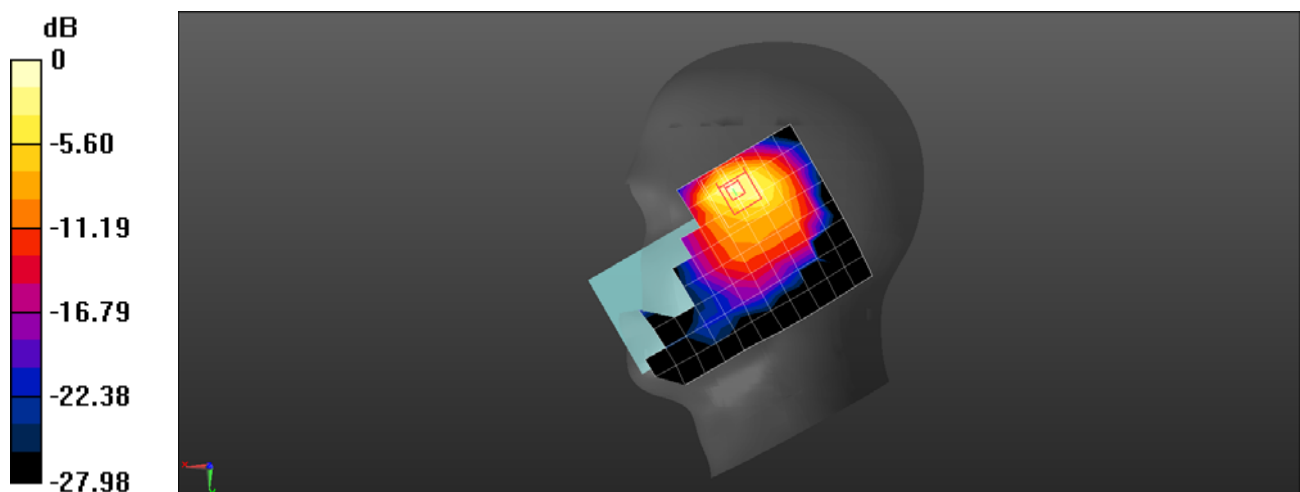
Configuration/Head/Zoom Scan (5x5x5)/Cube 0: Measurement grid: $dx=8$ mm, $dy=8$ mm, $dz=5$ mm

Reference Value = 3.145 V/m; Power Drift = -0.09 dB

Peak SAR (extrapolated) = 0.220 W/kg

SAR(1 g) = 0.099 W/kg; SAR(10 g) = 0.047 W/kg

Maximum value of SAR (measured) = 0.136 W/kg



0 dB = 0.136 W/kg = -8.66 dBW/kg

Test Laboratory: HUAWEI SAR/HAC Lab

HRY-LX2 UMTS Band IV 1413CH Right Cheek with Battery2-Main Antenna

DUT: HRY-LX2; Type: Smart Phone; Serial: SAR5

Communication System: UID 0, HW-UMTS-FDD(WCDMA) (0); Frequency: 1732.6 MHz; Duty Cycle: 1:1

Medium parameters used: $f = 1733$ MHz; $\sigma = 1.375$ S/m; $\epsilon_r = 39.148$; $\rho = 1000$ kg/m³

Phantom section: Right Section

DASY Configuration:

- Probe: ES3DV3 - SN3071; ConvF(5.08, 5.08, 5.08) @ 1732.6 MHz; Calibrated: 2017-12-18
- Sensor-Surface: 3mm (Mechanical Surface Detection), $z = 2.0, 32.0$
- Electronics: DAE4 Sn1531; Calibrated: 2018-1-3
- Phantom: SAM8; Type: SAM; Serial: 1940
- DASY52 52.10.1(1476); SEMCAD X 14.6.11(7439)

Configuration/Head/Area Scan (9x14x1): Measurement grid: $dx=15$ mm, $dy=15$ mm

Maximum value of SAR (measured) = 0.187 W/kg

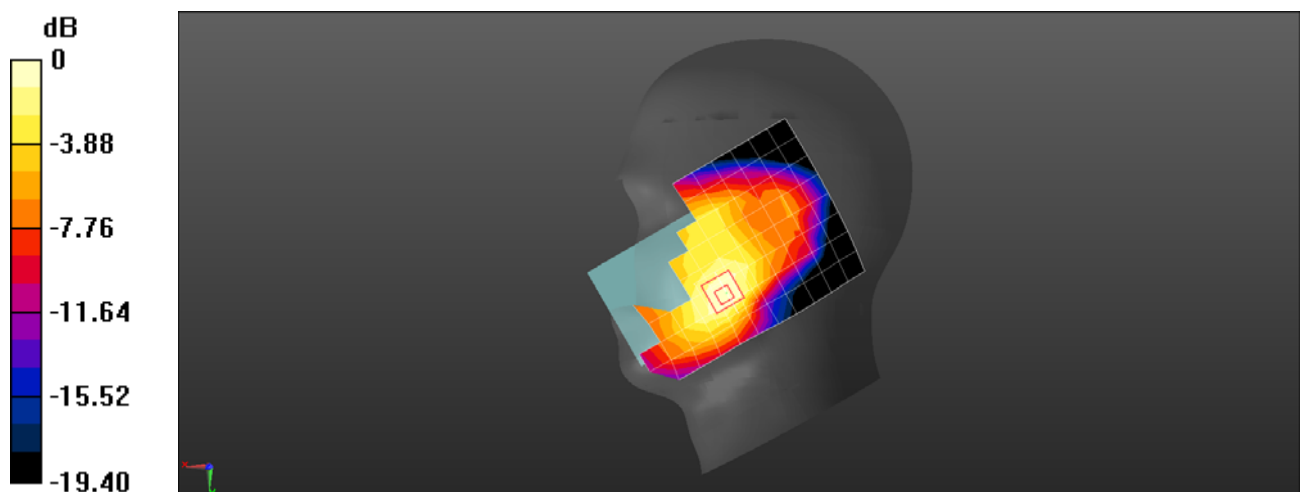
Configuration/Head/Zoom Scan (5x5x5)/Cube 0: Measurement grid: $dx=8$ mm, $dy=8$ mm, $dz=5$ mm

Reference Value = 5.860 V/m; Power Drift = 0.13 dB

Peak SAR (extrapolated) = 0.259 W/kg

SAR(1 g) = 0.174 W/kg; SAR(10 g) = 0.112 W/kg

Maximum value of SAR (measured) = 0.203 W/kg



0 dB = 0.203 W/kg = -6.93 dBW/kg

Test Laboratory: HUAWEI SAR/HAC Lab

HRY-LX2 UMTS Band IV 1413CH Back Side 15mm with Battery3-Second Antenna

DUT: HRY-LX2; Type: Smart Phone; Serial: SAR3

Communication System: UID 0, HW-UMTS-FDD(WCDMA) (0); Frequency: 1732.6 MHz; Duty Cycle: 1:1

Medium parameters used: $f = 1733$ MHz; $\sigma = 1.462$ S/m; $\epsilon_r = 53.591$; $\rho = 1000$ kg/m³

Phantom section: Flat Section

DASY Configuration:

- Probe: EX3DV4 - SN7505; ConvF(8.23, 8.23, 8.23) @ 1732.6 MHz; Calibrated: 2018-6-12
- Sensor-Surface: 1.4mm (Mechanical Surface Detection), $z = 1.0, 31.0$
- Electronics: DAE4 Sn1235; Calibrated: 2017-11-16
- Phantom: SAM6; Type: SAM; Serial: 1894
- DASY52 52.10.1(1476); SEMCAD X 14.6.11(7439)

Configuration/Body/Area Scan (9x14x1): Measurement grid: $dx=15$ mm, $dy=15$ mm

Maximum value of SAR (measured) = 0.0214 W/kg

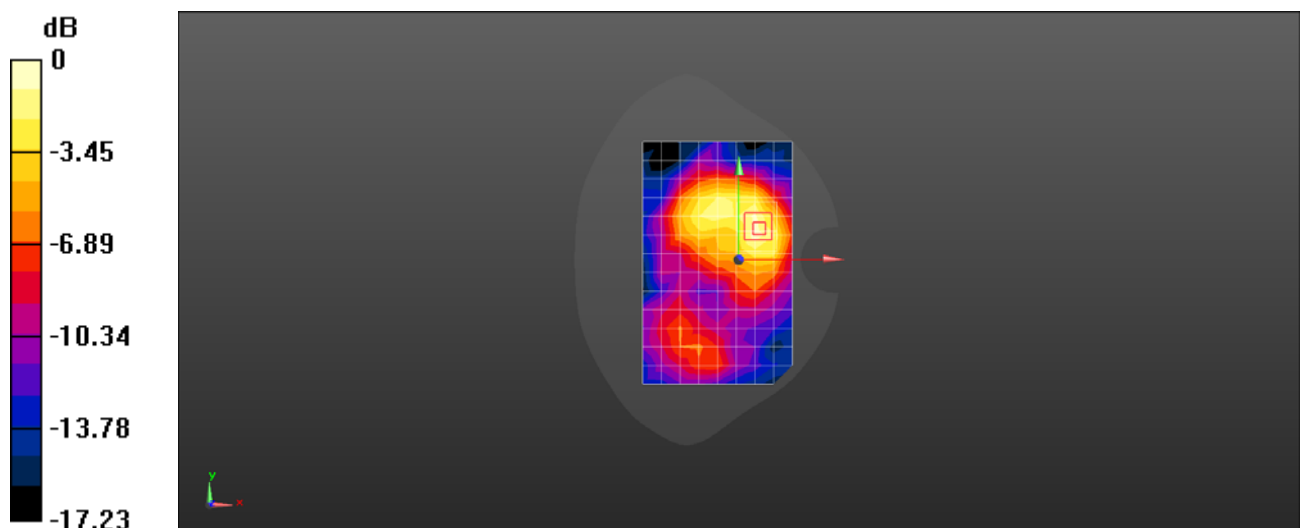
Configuration/Body/Zoom Scan (5x6x7)/Cube 0: Measurement grid: $dx=8$ mm, $dy=8$ mm, $dz=5$ mm

Reference Value = 1.811 V/m; Power Drift = -0.12 dB

Peak SAR (extrapolated) = 0.0260 W/kg

SAR(1 g) = 0.018 W/kg; SAR(10 g) = 0.011 W/kg

Maximum value of SAR (measured) = 0.0230 W/kg



0 dB = 0.0230 W/kg = -16.38 dBW/kg

Test Laboratory: HUAWEI SAR/HAC Lab

HRY-LX2 UMTS Band IV 1413CH Front Side 15mm with Battery4-Main Antenna

DUT: HRY-LX2; Type: Smart Phone; Serial: SAR3

Communication System: UID 0, HW-UMTS-FDD(WCDMA) (0); Frequency: 1732.6 MHz; Duty Cycle: 1:1

Medium parameters used: $f = 1733$ MHz; $\sigma = 1.462$ S/m; $\epsilon_r = 53.591$; $\rho = 1000$ kg/m³

Phantom section: Flat Section

DASY Configuration:

- Probe: EX3DV4 - SN7505; ConvF(8.23, 8.23, 8.23) @ 1732.6 MHz; Calibrated: 2018-6-12
- Sensor-Surface: 1.4mm (Mechanical Surface Detection), $z = 1.0, 31.0$
- Electronics: DAE4 Sn1235; Calibrated: 2017-11-16
- Phantom: SAM6; Type: SAM; Serial: 1894
- DASY52 52.10.1(1476); SEMCAD X 14.6.11(7439)

Configuration/Body/Area Scan (9x14x1): Measurement grid: $dx=15$ mm, $dy=15$ mm

Maximum value of SAR (measured) = 0.319 W/kg

Configuration/Body/Zoom Scan (5x6x7)/Cube 0: Measurement grid: $dx=8$ mm, $dy=8$ mm, $dz=5$ mm

Reference Value = 6.558 V/m; Power Drift = 0.10 dB

Peak SAR (extrapolated) = 0.286 W/kg

SAR(1 g) = 0.253 W/kg; SAR(10 g) = 0.186 W/kg

Maximum value of SAR (measured) = 0.282 W/kg

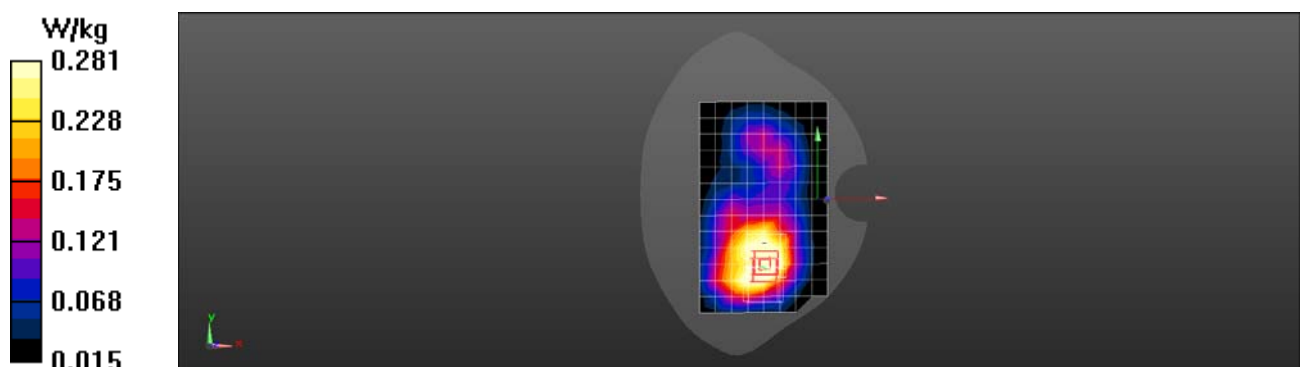
Configuration/Body/Zoom Scan (5x6x7)/Cube 1: Measurement grid: $dx=8$ mm, $dy=8$ mm, $dz=5$ mm

Reference Value = 6.558 V/m; Power Drift = 0.10 dB

Peak SAR (extrapolated) = 0.286 W/kg

SAR(1 g) = 0.253 W/kg; SAR(10 g) = 0.181 W/kg

Maximum value of SAR (measured) = 0.281 W/kg



Test Laboratory: HUAWEI SAR/HAC Lab

HRY-LX2 UMTS Band IV 1413CH Left Side 10mm with Battery4-Second Antenna

DUT: HRY-LX2; Type: Smart Phone; Serial: SAR3

Communication System: UID 0, HW-UMTS-FDD(WCDMA) (0); Frequency: 1732.6 MHz; Duty Cycle: 1:1

Medium parameters used: $f = 1733$ MHz; $\sigma = 1.462$ S/m; $\epsilon_r = 53.591$; $\rho = 1000$ kg/m³

Phantom section: Flat Section

DASY Configuration:

- Probe: EX3DV4 - SN7505; ConvF(8.23, 8.23, 8.23) @ 1732.6 MHz; Calibrated: 2018-6-12
- Sensor-Surface: 1.4mm (Mechanical Surface Detection), $z = 1.0, 31.0$
- Electronics: DAE4 Sn1235; Calibrated: 2017-11-16
- Phantom: SAM6; Type: SAM; Serial: 1894
- DASY52 52.10.1(1476); SEMCAD X 14.6.11(7439)

Configuration/Body/Area Scan (6x14x1): Measurement grid: $dx=15$ mm, $dy=15$ mm

Maximum value of SAR (measured) = 0.0380 W/kg

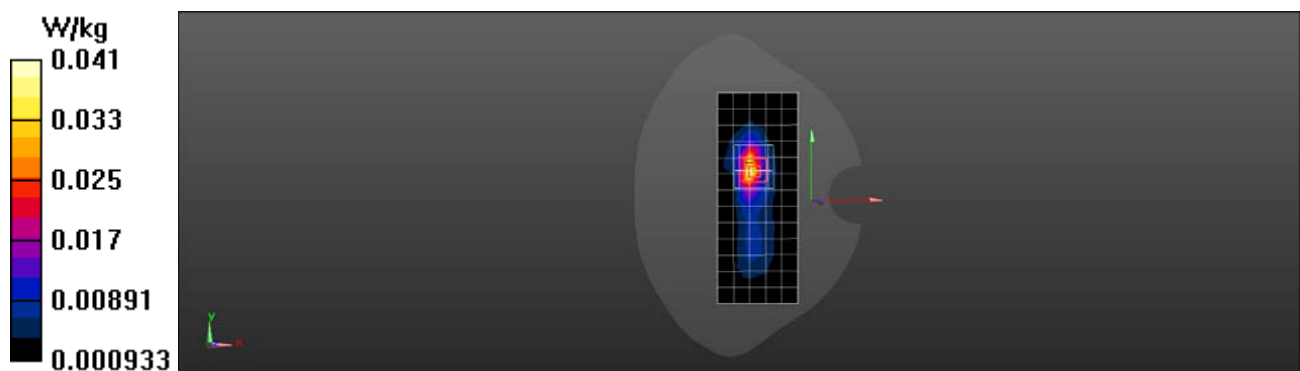
Configuration/Body/Zoom Scan (5x6x7)/Cube 0: Measurement grid: $dx=8$ mm, $dy=8$ mm, $dz=5$ mm

Reference Value = 3.202 V/m; Power Drift = 0.03 dB

Peak SAR (extrapolated) = 0.0480 W/kg

SAR(1 g) = 0.029 W/kg; SAR(10 g) = 0.015 W/kg

Maximum value of SAR (measured) = 0.0408 W/kg



Test Laboratory: HUAWEI SAR/HAC Lab

HRY-LX2 UMTS Band IV 1413CH Bottom Side 10mm-Main Antenna

DUT: HRY-LX2; Type: Smart Phone; Serial: SAR1

Communication System: UID 0, HW-UMTS-FDD(WCDMA) (0); Frequency: 1732.6 MHz; Duty Cycle: 1:1

Medium parameters used: $f = 1733$ MHz; $\sigma = 1.493$ S/m; $\epsilon_r = 52.654$; $\rho = 1000$ kg/m³

Phantom section: Flat Section

DASY Configuration:

- Probe: EX3DV4 - SN3744; ConvF(7.74, 7.74, 7.74) @ 1732.6 MHz; Calibrated: 2018-7-25
- Sensor-Surface: 1.4mm (Mechanical Surface Detection), $z = 1.0, 31.0$
- Electronics: DAE3 Sn393; Calibrated: 2018-8-14
- Phantom: SAM2; Type: SAM; Serial: 1474
- DASY52 52.10.1(1476); SEMCAD X 14.6.11(7439)

Configuration/Body/Area Scan (5x9x1): Measurement grid: $dx=15$ mm, $dy=15$ mm

Maximum value of SAR (measured) = 0.368 W/kg

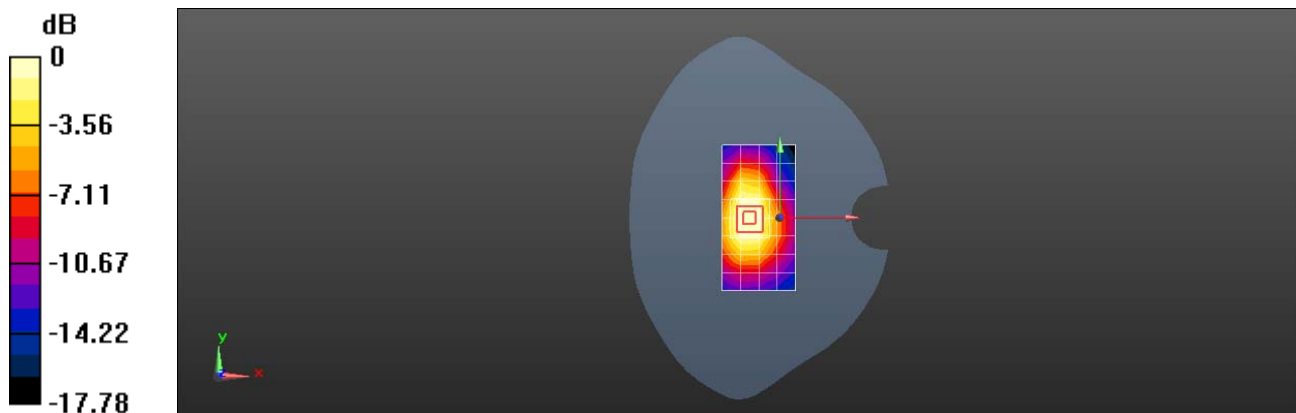
Configuration/Body/Zoom Scan (5x5x7)/Cube 0: Measurement grid: $dx=8$ mm, $dy=8$ mm, $dz=5$ mm

Reference Value = 16.24 V/m; Power Drift = 0.17 dB

Peak SAR (extrapolated) = 0.572 W/kg

SAR(1 g) = 0.336 W/kg; SAR(10 g) = 0.193 W/kg

Maximum value of SAR (measured) = 0.489 W/kg



0 dB = 0.368 W/kg = -4.35 dBW/kg

Test Laboratory: HUAWEI SAR/HAC Lab

HRY-LX2 UMTS Band V 4182CH Right Cheek with SIM2-Second Antenna

DUT: HRY-LX2; Type: Smart Phone; Serial: SAR5

Communication System: UID 0, HW-UMTS-FDD(WCDMA) (0); Frequency: 836.4 MHz; Duty Cycle: 1:1

Medium parameters used (interpolated): $f = 836.4$ MHz; $\sigma = 0.93$ S/m; $\epsilon_r = 40.043$; $\rho = 1000$ kg/m³

Phantom section: Right Section

DASY Configuration:

- Probe: ES3DV3 - SN3071; ConvF(5.92, 5.92, 5.92) @ 836.4 MHz; Calibrated: 2017-12-18
- Sensor-Surface: 3mm (Mechanical Surface Detection), $z = 2.0, 32.0$
- Electronics: DAE4 Sn1531; Calibrated: 2018-1-3
- Phantom: SAM8; Type: SAM; Serial: 1940
- DASY52 52.10.1(1476); SEMCAD X 14.6.11(7439)

Configuration/Head/Area Scan (9x14x1): Measurement grid: $dx=15$ mm, $dy=15$ mm

[Info: Interpolated medium parameters used for SAR evaluation.](#)

Maximum value of SAR (measured) = 0.515 W/kg

Configuration/Head/Zoom Scan (5x5x5)/Cube 0: Measurement grid: $dx=8$ mm, $dy=8$ mm, $dz=5$ mm

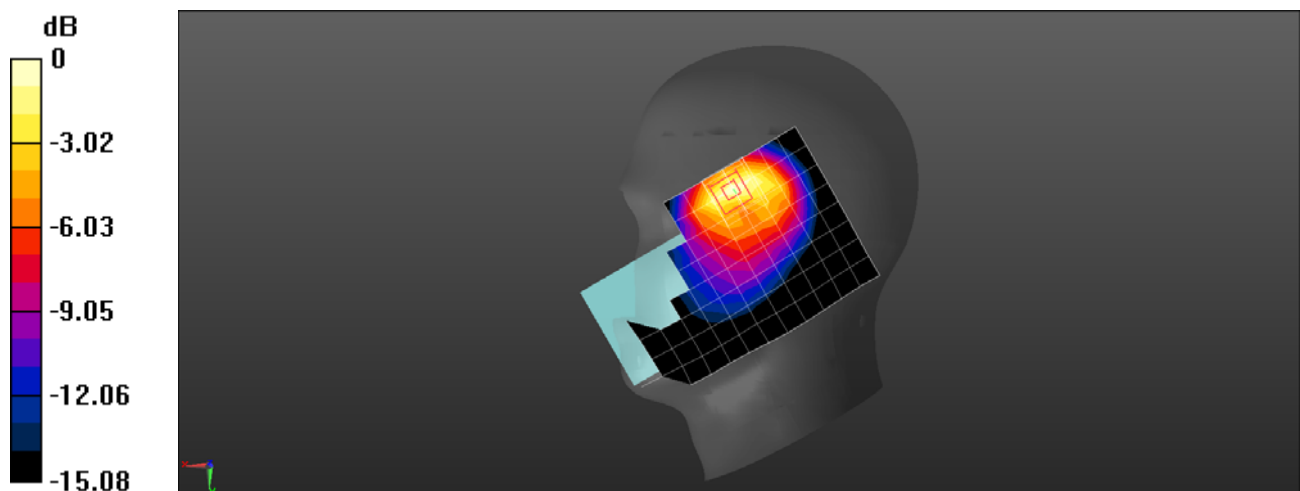
Reference Value = 9.321 V/m; Power Drift = -0.01 dB

Peak SAR (extrapolated) = 0.773 W/kg

SAR(1 g) = 0.384 W/kg; SAR(10 g) = 0.205 W/kg

[Info: Interpolated medium parameters used for SAR evaluation.](#)

Maximum value of SAR (measured) = 0.514 W/kg



0 dB = 0.514 W/kg = -2.89 dBW/kg

Test Laboratory: HUAWEI SAR/HAC Lab

HRY-LX2 UMTS Band V 4182CH Right Cheek-Main Antenna

DUT: HRY-LX2; Type: Smart Phone; Serial: SAR5

Communication System: UID 0, HW-UMTS-FDD(WCDMA) (0); Frequency: 836.4 MHz; Duty Cycle: 1:1

Medium parameters used (interpolated): $f = 836.4$ MHz; $\sigma = 0.93$ S/m; $\epsilon_r = 40.043$; $\rho = 1000$ kg/m³

Phantom section: Right Section

DASY Configuration:

- Probe: ES3DV3 - SN3071; ConvF(5.92, 5.92, 5.92) @ 836.4 MHz; Calibrated: 2017-12-18
- Sensor-Surface: 3mm (Mechanical Surface Detection), $z = 2.0, 32.0$
- Electronics: DAE4 Sn1531; Calibrated: 2018-1-3
- Phantom: SAM8; Type: SAM; Serial: 1940
- DASY52 52.10.1(1476); SEMCAD X 14.6.11(7439)

Configuration/Head/Area Scan (9x14x1): Measurement grid: $dx=15$ mm, $dy=15$ mm

[Info: Interpolated medium parameters used for SAR evaluation.](#)

Maximum value of SAR (measured) = 0.0406 W/kg

Configuration/Head/Zoom Scan (5x5x5)/Cube 0: Measurement grid: $dx=8$ mm, $dy=8$ mm, $dz=5$ mm

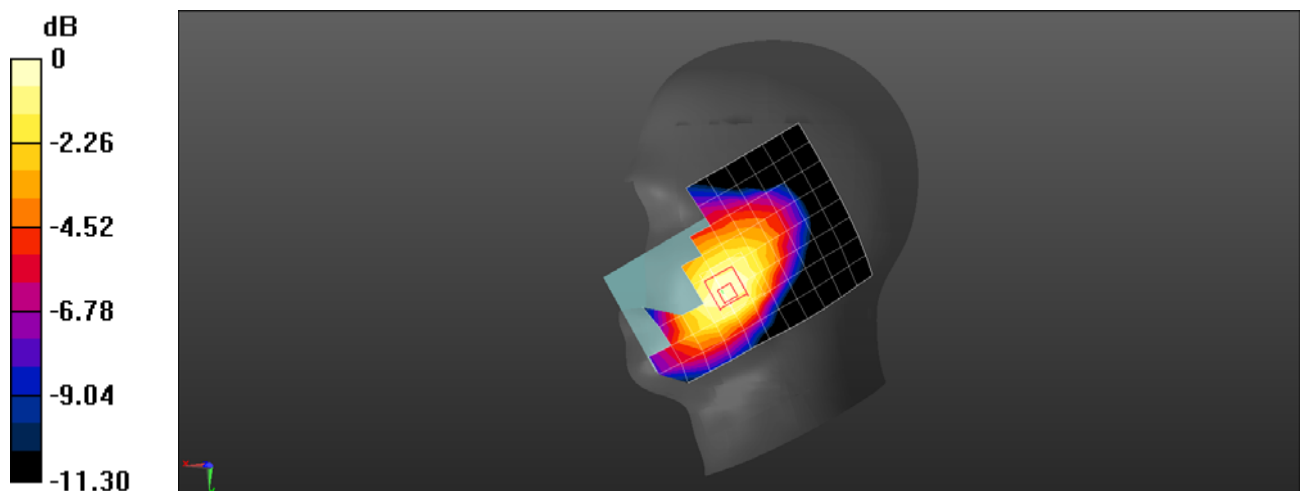
Reference Value = 2.068 V/m; Power Drift = -0.02 dB

Peak SAR (extrapolated) = 0.0470 W/kg

SAR(1 g) = 0.037 W/kg; SAR(10 g) = 0.028 W/kg

[Info: Interpolated medium parameters used for SAR evaluation.](#)

Maximum value of SAR (measured) = 0.0400 W/kg



0 dB = 0.0400 W/kg = -13.98 dBW/kg

Test Laboratory: HUAWEI SAR/HAC Lab

HRY-LX2 UMTS Band V 4182CH Back Side 15mm with Battery2-Second Antenna

DUT: HRY-LX2; Type: Smart Phone; Serial: SAR3

Communication System: UID 0, HW-UMTS-FDD(WCDMA) (0); Frequency: 836.4 MHz; Duty Cycle: 1:1

Medium parameters used (interpolated): $f = 836.4$ MHz; $\sigma = 1.013$ S/m; $\epsilon_r = 54.861$; $\rho = 1000$ kg/m³

Phantom section: Flat Section

DASY Configuration:

- Probe: EX3DV4 - SN7505; ConvF(9.73, 9.73, 9.73) @ 836.4 MHz; Calibrated: 2018-6-12
- Sensor-Surface: 1.4mm (Mechanical Surface Detection), $z = 1.0, 31.0$
- Electronics: DAE4 Sn1235; Calibrated: 2017-11-16
- Phantom: SAM6; Type: SAM; Serial: 1894
- DASY52 52.10.1(1476); SEMCAD X 14.6.11(7439)

Configuration/Body/Area Scan (9x15x1): Measurement grid: $dx=15$ mm, $dy=15$ mm

[Info: Interpolated medium parameters used for SAR evaluation.](#)

Maximum value of SAR (measured) = 0.492 W/kg

Configuration/Body/Zoom Scan (5x5x7)/Cube 0: Measurement grid: $dx=8$ mm, $dy=8$ mm, $dz=5$ mm

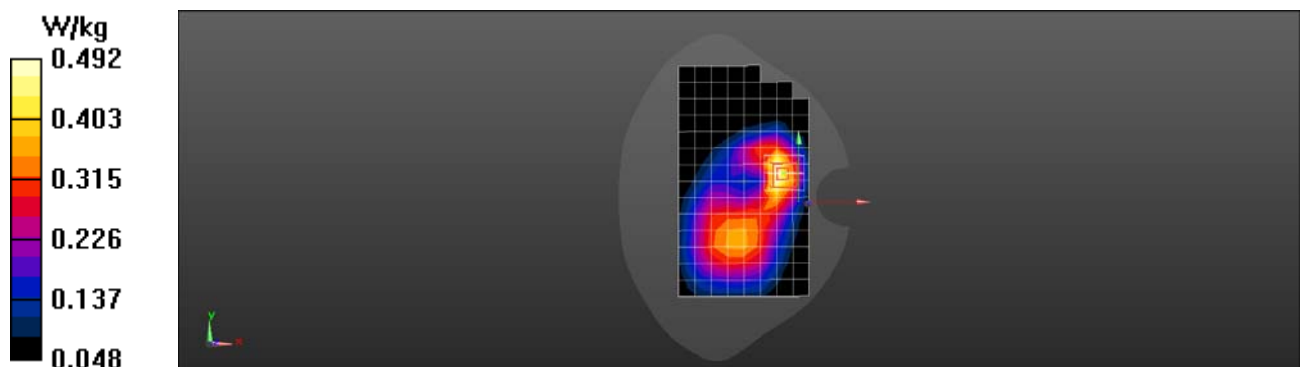
Reference Value = 13.81 V/m; Power Drift = -0.05 dB

Peak SAR (extrapolated) = 0.524 W/kg

SAR(1 g) = 0.395 W/kg; SAR(10 g) = 0.272 W/kg

[Info: Interpolated medium parameters used for SAR evaluation.](#)

Maximum value of SAR (measured) = 0.492 W/kg



Test Laboratory: HUAWEI SAR/HAC Lab

HRY-LX2 UMTS Band V 4182CH Back Side 15mm with Battery2-Main Antenna

DUT: HRY-LX2; Type: Smart Phone; Serial: SAR3

Communication System: UID 0, HW-UMTS-FDD(WCDMA) (0); Frequency: 836.4 MHz; Duty Cycle: 1:1

Medium parameters used (interpolated): $f = 836.4$ MHz; $\sigma = 1.013$ S/m; $\epsilon_r = 54.861$; $\rho = 1000$ kg/m³

Phantom section: Flat Section

DASY Configuration:

- Probe: EX3DV4 - SN7505; ConvF(9.73, 9.73, 9.73) @ 836.4 MHz; Calibrated: 2018-6-12
- Sensor-Surface: 1.4mm (Mechanical Surface Detection), $z = 1.0, 31.0$
- Electronics: DAE4 Sn1235; Calibrated: 2017-11-16
- Phantom: SAM6; Type: SAM; Serial: 1894
- DASY52 52.10.1(1476); SEMCAD X 14.6.11(7439)

Configuration/Body/Area Scan (9x15x1): Measurement grid: $dx=15$ mm, $dy=15$ mm

[Info: Interpolated medium parameters used for SAR evaluation.](#)

Maximum value of SAR (measured) = 0.161 W/kg

Configuration/Body/Zoom Scan (8x6x7)/Cube 0: Measurement grid: $dx=8$ mm, $dy=8$ mm, $dz=5$ mm

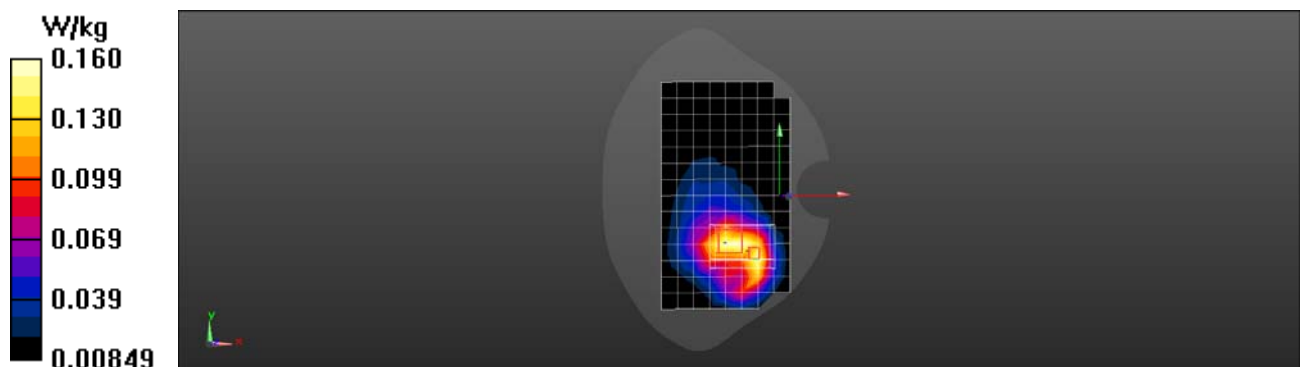
Reference Value = 5.557 V/m; Power Drift = -0.09 dB

Peak SAR (extrapolated) = 0.178 W/kg

SAR(1 g) = 0.126 W/kg; SAR(10 g) = 0.085 W/kg

[Info: Interpolated medium parameters used for SAR evaluation.](#)

Maximum value of SAR (measured) = 0.160 W/kg



Test Laboratory: HUAWEI SAR/HAC Lab

HRY-LX2 UMTS Band V 4182CH Left Side 10mm with Battery4-Second Antenna

DUT: HRY-LX2; Type: Smart Phone; Serial: SAR3

Communication System: UID 0, HW-UMTS-FDD(WCDMA) (0); Frequency: 836.4 MHz; Duty Cycle: 1:1

Medium parameters used (interpolated): $f = 836.4$ MHz; $\sigma = 1.013$ S/m; $\epsilon_r = 54.861$; $\rho = 1000$ kg/m³

Phantom section: Flat Section

DASY Configuration:

- Probe: EX3DV4 - SN7505; ConvF(9.73, 9.73, 9.73) @ 836.4 MHz; Calibrated: 2018-6-12
- Sensor-Surface: 1.4mm (Mechanical Surface Detection), $z = 1.0, 31.0$
- Electronics: DAE4 Sn1235; Calibrated: 2017-11-16
- Phantom: SAM6; Type: SAM; Serial: 1894
- DASY52 52.10.1(1476); SEMCAD X 14.6.11(7439)

Configuration/Body/Area Scan (6x15x1): Measurement grid: $dx=15$ mm, $dy=15$ mm

[Info: Interpolated medium parameters used for SAR evaluation.](#)

Maximum value of SAR (measured) = 0.829 W/kg

Configuration/Body/Zoom Scan (5x5x7)/Cube 0: Measurement grid: $dx=8$ mm, $dy=8$ mm, $dz=5$ mm

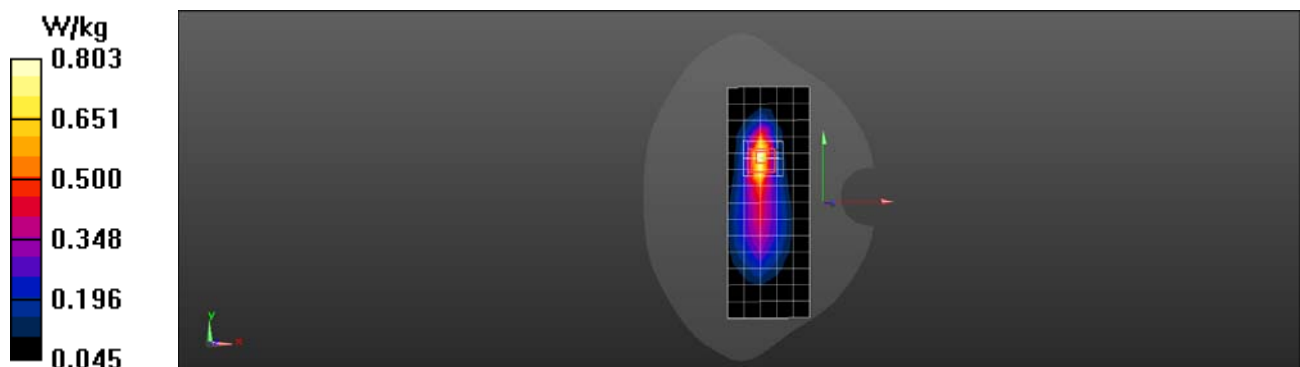
Reference Value = 19.87 V/m; Power Drift = -0.11 dB

Peak SAR (extrapolated) = 0.908 W/kg

SAR(1 g) = 0.576 W/kg; SAR(10 g) = 0.344 W/kg

[Info: Interpolated medium parameters used for SAR evaluation.](#)

Maximum value of SAR (measured) = 0.803 W/kg



Test Laboratory: HUAWEI SAR/HAC Lab

HRY-LX2 UMTS Band V 4182CH Back Side 10mm with Battery3-Main Antenna

DUT: HRY-LX2; Type: Smart Phone; Serial: SAR3

Communication System: UID 0, HW-UMTS-FDD(WCDMA) (0); Frequency: 836.4 MHz; Duty Cycle: 1:1

Medium parameters used (interpolated): $f = 836.4$ MHz; $\sigma = 1.013$ S/m; $\epsilon_r = 54.861$; $\rho = 1000$ kg/m³

Phantom section: Flat Section

DASY Configuration:

- Probe: EX3DV4 - SN7505; ConvF(9.73, 9.73, 9.73) @ 836.4 MHz; Calibrated: 2018-6-12
- Sensor-Surface: 1.4mm (Mechanical Surface Detection), $z = 1.0, 31.0$
- Electronics: DAE4 Sn1235; Calibrated: 2017-11-16
- Phantom: SAM6; Type: SAM; Serial: 1894
- DASY52 52.10.1(1476); SEMCAD X 14.6.11(7439)

Configuration/Body/Area Scan (9x15x1): Measurement grid: $dx=15$ mm, $dy=15$ mm

[Info: Interpolated medium parameters used for SAR evaluation.](#)

Maximum value of SAR (measured) = 0.270 W/kg

Configuration/Body/Zoom Scan (6x6x7)/Cube 0: Measurement grid: $dx=8$ mm, $dy=8$ mm, $dz=5$ mm

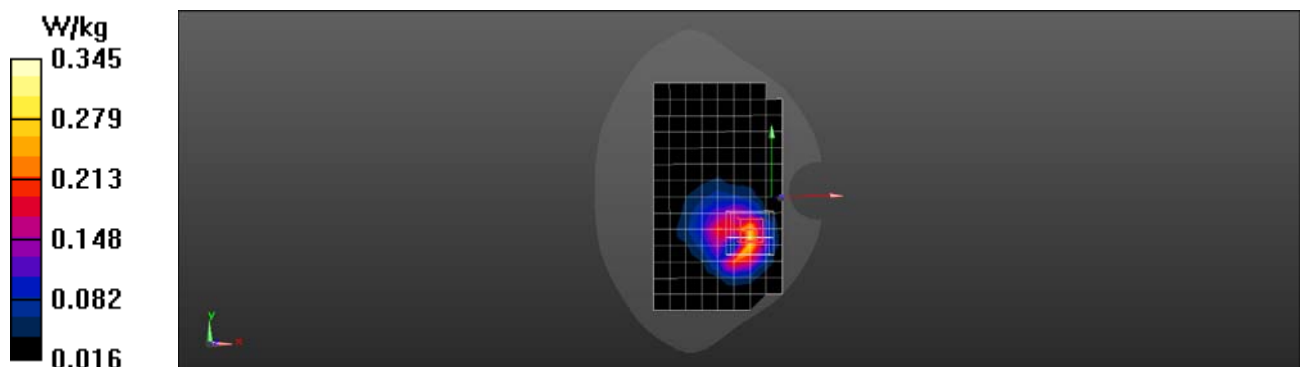
Reference Value = 8.093 V/m; Power Drift = -0.09 dB

Peak SAR (extrapolated) = 0.396 W/kg

SAR(1 g) = 0.256 W/kg; SAR(10 g) = 0.156 W/kg

[Info: Interpolated medium parameters used for SAR evaluation.](#)

Maximum value of SAR (measured) = 0.345 W/kg



Test Laboratory: HUAWEI SAR/HAC Lab

HRY-LX2 LTE Band 2 20M QPSK 1RB 99 Offset 18700CH Right Cheek with Battery4-Main Antenna

DUT: HRY-LX2; Type: Smart Phone; Serial: SAR5

Communication System: UID 0, LTE-FDD (SC-FDMA, 20MHz, QPSK/16-QAM) (0); Frequency: 1860 MHz; Duty Cycle: 1:1

Medium parameters used: $f = 1860$ MHz; $\sigma = 1.429$ S/m; $\epsilon_r = 38.868$; $\rho = 1000$ kg/m³

Phantom section: Right Section

DASY Configuration:

- Probe: ES3DV3 - SN3071; ConvF(4.87, 4.87, 4.87) @ 1860 MHz; Calibrated: 2017-12-18
- Sensor-Surface: 3mm (Mechanical Surface Detection), $z = 2.0, 32.0$
- Electronics: DAE4 Sn1531; Calibrated: 2018-1-3
- Phantom: SAM8; Type: SAM; Serial: 1940
- DASY52 52.10.1(1476); SEMCAD X 14.6.11(7439)

Configuration/Head/Area Scan (9x14x1): Measurement grid: $dx=15$ mm, $dy=15$ mm

Maximum value of SAR (measured) = 0.131 W/kg

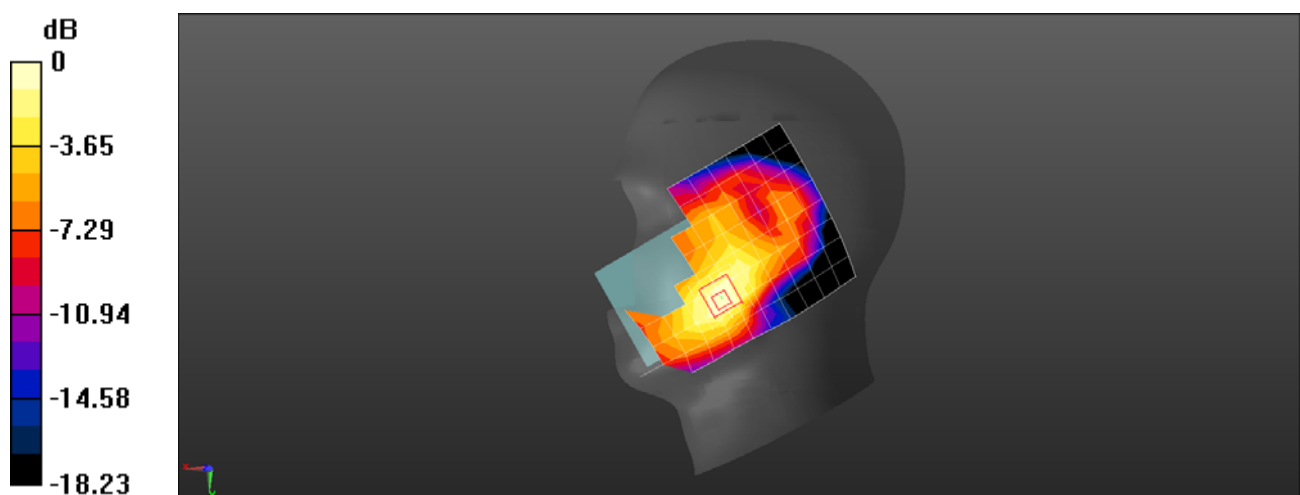
Configuration/Head/Zoom Scan (5x5x5)/Cube 0: Measurement grid: $dx=8$ mm, $dy=8$ mm, $dz=5$ mm

Reference Value = 5.387 V/m; Power Drift = 0.09 dB

Peak SAR (extrapolated) = 0.185 W/kg

SAR(1 g) = 0.123 W/kg; SAR(10 g) = 0.076 W/kg

Maximum value of SAR (measured) = 0.145 W/kg



0 dB = 0.145 W/kg = -8.39 dBW/kg

Test Laboratory: HUAWEI SAR/HAC Lab

HRY-LX2 LTE Band 2 20M QPSK 1RB 99 Offset 18700CH Front Side 15mm-Main Antenna

DUT: HRY-LX2; Type: Smart Phone; Serial: SAR3

Communication System: UID 0, LTE-FDD (SC-FDMA, 20MHz, QPSK/16-QAM) (0); Frequency: 1860 MHz; Duty Cycle: 1:1

Medium parameters used: $f = 1860$ MHz; $\sigma = 1.539$ S/m; $\epsilon_r = 51.641$; $\rho = 1000$ kg/m³

Phantom section: Flat Section

DASY Configuration:

- Probe: EX3DV4 - SN7505; ConvF(7.87, 7.87, 7.87) @ 1860 MHz; Calibrated: 2018-6-12
- Sensor-Surface: 1.4mm (Mechanical Surface Detection), $z = 1.0, 31.0$
- Electronics: DAE4 Sn1235; Calibrated: 2017-11-16
- Phantom: SAM6; Type: SAM; Serial: 1894
- DASY52 52.10.1(1476); SEMCAD X 14.6.11(7439)

Configuration/Body/Area Scan (9x15x1): Measurement grid: $dx=15$ mm, $dy=15$ mm

Maximum value of SAR (measured) = 0.196 W/kg

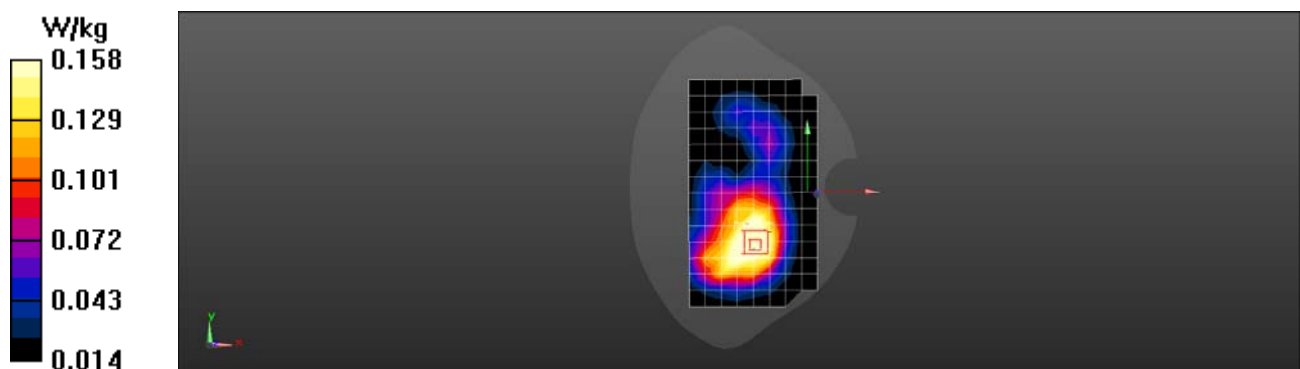
Configuration/Body/Zoom Scan (5x5x7)/Cube 0: Measurement grid: $dx=8$ mm, $dy=8$ mm, $dz=5$ mm

Reference Value = 6.302 V/m; Power Drift = -0.09 dB

Peak SAR (extrapolated) = 0.162 W/kg

SAR(1 g) = 0.139 W/kg; SAR(10 g) = 0.101 W/kg

Maximum value of SAR (measured) = 0.158 W/kg



Test Laboratory: HUAWEI SAR/HAC Lab

HRY-LX2 LTE Band 2 20M QPSK 1RB 0 Offset 18700CH Bottom Side 10mm-Main Antenna

DUT: HRY-LX2; Type: Smart Phone; Serial: SAR3

Communication System: UID 0, LTE-FDD (SC-FDMA, 20MHz, QPSK/16-QAM) (0); Frequency: 1860 MHz; Duty Cycle: 1:1

Medium parameters used: $f = 1860$ MHz; $\sigma = 1.539$ S/m; $\epsilon_r = 51.641$; $\rho = 1000$ kg/m³

Phantom section: Flat Section

DASY Configuration:

- Probe: EX3DV4 - SN7505; ConvF(7.87, 7.87, 7.87) @ 1860 MHz; Calibrated: 2018-6-12
- Sensor-Surface: 1.4mm (Mechanical Surface Detection), $z = 1.0, 31.0$
- Electronics: DAE4 Sn1235; Calibrated: 2017-11-16
- Phantom: SAM6; Type: SAM; Serial: 1894
- DASY52 52.10.1(1476); SEMCAD X 14.6.11(7439)

Configuration/Body/Area Scan (5x11x1): Measurement grid: $dx=15$ mm, $dy=15$ mm

Maximum value of SAR (measured) = 0.275 W/kg

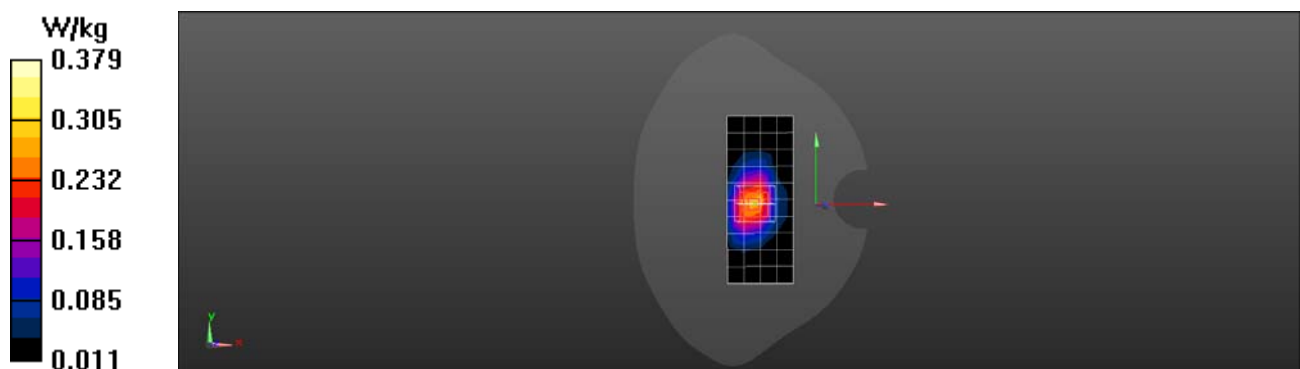
Configuration/Body/Zoom Scan (5x5x7)/Cube 0: Measurement grid: $dx=8$ mm, $dy=8$ mm, $dz=5$ mm

Reference Value = 13.89 V/m; Power Drift = 0.07 dB

Peak SAR (extrapolated) = 0.429 W/kg

SAR(1 g) = 0.268 W/kg; SAR(10 g) = 0.156 W/kg

Maximum value of SAR (measured) = 0.379 W/kg



Test Laboratory: HUAWEI SAR/HAC Lab

HRY-LX2 LTE Band 4 20M QPSK 1RB 99 Offset 20300CH Right Cheek-Main Antenna

DUT: HRY-LX2; Type: Smart Phone; Serial: SAR5

Communication System: UID 0, LTE-FDD (SC-FDMA, 20MHz, QPSK/16-QAM) (0); Frequency: 1745 MHz; Duty Cycle: 1:1

Medium parameters used: $f = 1745$ MHz; $\sigma = 1.382$ S/m; $\epsilon_r = 39.105$; $\rho = 1000$ kg/m³

Phantom section: Right Section

DASY Configuration:

- Probe: ES3DV3 - SN3071; ConvF(5.08, 5.08, 5.08) @ 1745 MHz; Calibrated: 2017-12-18
- Sensor-Surface: 3mm (Mechanical Surface Detection), $z = 2.0, 32.0$
- Electronics: DAE4 Sn1531; Calibrated: 2018-1-3
- Phantom: SAM8; Type: SAM; Serial: 1940
- DASY52 52.10.1(1476); SEMCAD X 14.6.11(7439)

Configuration/Head/Area Scan (9x14x1): Measurement grid: $dx=15$ mm, $dy=15$ mm

Maximum value of SAR (measured) = 0.162 W/kg

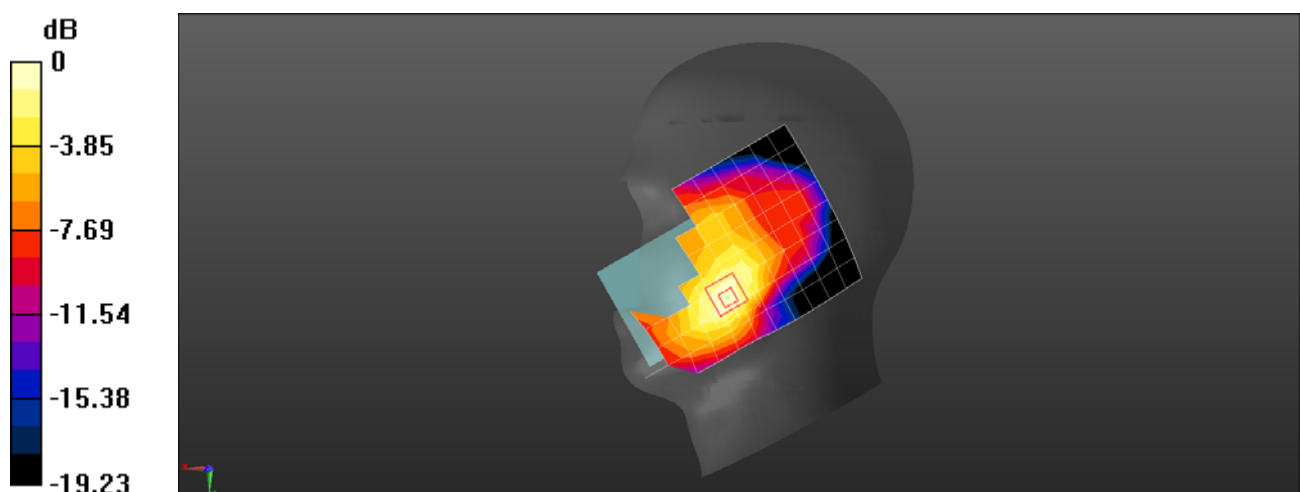
Configuration/Head/Zoom Scan (5x5x5)/Cube 0: Measurement grid: $dx=8$ mm, $dy=8$ mm, $dz=5$ mm

Reference Value = 5.071 V/m; Power Drift = 0.02 dB

Peak SAR (extrapolated) = 0.243 W/kg

SAR(1 g) = 0.160 W/kg; SAR(10 g) = 0.100 W/kg

Maximum value of SAR (measured) = 0.190 W/kg



0 dB = 0.190 W/kg = -7.21 dBW/kg

Test Laboratory: HUAWEI SAR/HAC Lab

HRY-LX2 LTE Band 4 20M QPSK 1RB 99 Offset 20300CH Front Side 15mm with Battery2-Main Antenna

DUT: HRY-LX2; Type: Smart Phone; Serial: SAR3

Communication System: UID 0, LTE-FDD (SC-FDMA, 20MHz, QPSK/16-QAM) (0); Frequency: 1745 MHz; Duty Cycle: 1:1

Medium parameters used: $f = 1745$ MHz; $\sigma = 1.47$ S/m; $\epsilon_r = 53.556$; $\rho = 1000$ kg/m³

Phantom section: Flat Section

DASY Configuration:

- Probe: EX3DV4 - SN7505; ConvF(8.23, 8.23, 8.23) @ 1745 MHz; Calibrated: 2018-6-12
- Sensor-Surface: 1.4mm (Mechanical Surface Detection), $z = 1.0, 31.0$
- Electronics: DAE4 Sn1235; Calibrated: 2017-11-16
- Phantom: SAM6; Type: SAM; Serial: 1894
- DASY52 52.10.1(1476); SEMCAD X 14.6.11(7439)

Configuration/Body/Area Scan (9x14x1): Measurement grid: $dx=15$ mm, $dy=15$ mm

Maximum value of SAR (measured) = 0.286 W/kg

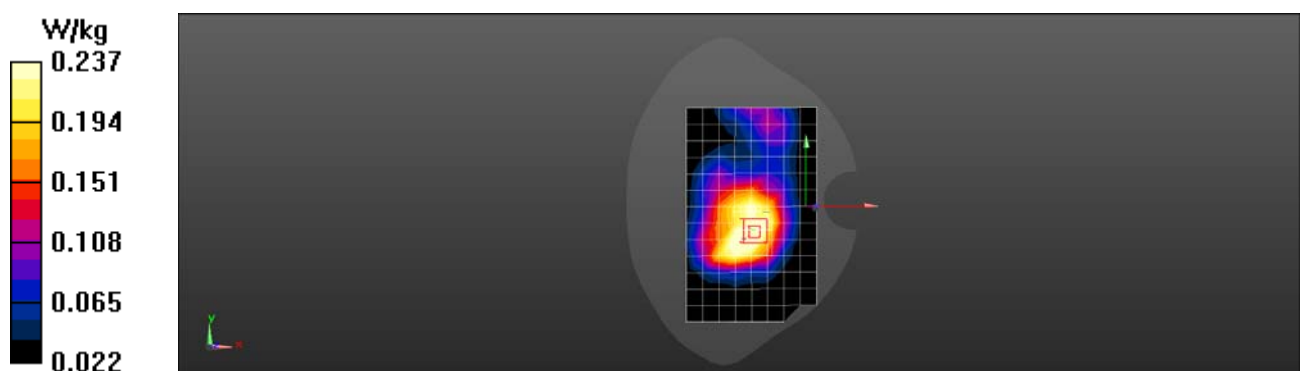
Configuration/Body/Zoom Scan (5x6x7)/Cube 0: Measurement grid: $dx=8$ mm, $dy=8$ mm, $dz=5$ mm

Reference Value = 11.32 V/m; Power Drift = -0.08 dB

Peak SAR (extrapolated) = 0.243 W/kg

SAR(1 g) = 0.215 W/kg; SAR(10 g) = 0.158 W/kg

Maximum value of SAR (measured) = 0.237 W/kg



Test Laboratory: HUAWEI SAR/HAC Lab

HRY-LX2 LTE Band 4 20M QPSK 50%RB 0 Offset 20050CH Bottom Side 10mm with Battery4-Main Antenna

DUT: HRY-LX2; Type: Smart Phone; Serial: SAR3

Communication System: UID 0, LTE-FDD (SC-FDMA, 20MHz, QPSK/16-QAM) (0); Frequency: 1720 MHz; Duty Cycle: 1:1

Medium parameters used: $f = 1720$ MHz; $\sigma = 1.454$ S/m; $\epsilon_r = 53.628$; $\rho = 1000$ kg/m³

Phantom section: Flat Section

DASY Configuration:

- Probe: EX3DV4 - SN7505; ConvF(8.23, 8.23, 8.23) @ 1720 MHz; Calibrated: 2018-6-12
- Sensor-Surface: 1.4mm (Mechanical Surface Detection), $z = 1.0, 31.0$
- Electronics: DAE4 Sn1235; Calibrated: 2017-11-16
- Phantom: SAM6; Type: SAM; Serial: 1894
- DASY52 52.10.1(1476); SEMCAD X 14.6.11(7439)

Configuration/Body/Area Scan (6x10x1): Measurement grid: $dx=15$ mm, $dy=15$ mm

Maximum value of SAR (measured) = 0.317 W/kg

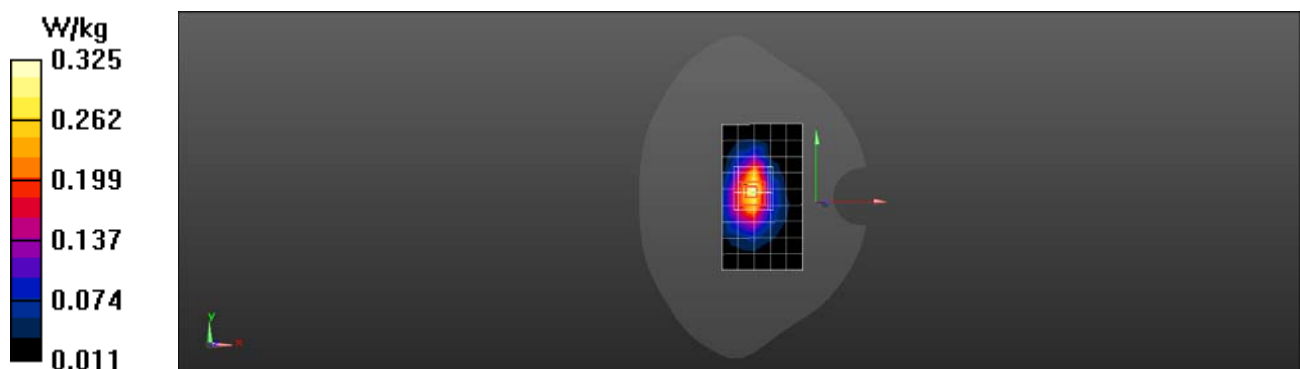
Configuration/Body/Zoom Scan (5x6x7)/Cube 0: Measurement grid: $dx=8$ mm, $dy=8$ mm, $dz=5$ mm

Reference Value = 11.68 V/m; Power Drift = -0.12 dB

Peak SAR (extrapolated) = 0.361 W/kg

SAR(1 g) = 0.240 W/kg; SAR(10 g) = 0.147 W/kg

Maximum value of SAR (measured) = 0.325 W/kg



Test Laboratory: HUAWEI SAR/HAC Lab

HRY-LX2 LTE Band 5 10M QPSK 1RB 0 Offset 20450CH Right Cheek-Second Antenna

DUT: HRY-LX2; Type: Smart Phone; Serial: SAR5

Communication System: UID 0, LTE-FDD (SC-FDMA, 10MHz, QPSK/16-QAM) (0); Frequency: 829 MHz; Duty Cycle: 1:1

Medium parameters used: $f = 829$ MHz; $\sigma = 0.927$ S/m; $\epsilon_r = 40.074$; $\rho = 1000$ kg/m³

Phantom section: Right Section

DASY Configuration:

- Probe: ES3DV3 - SN3071; ConvF(5.92, 5.92, 5.92) @ 829 MHz; Calibrated: 2017-12-18
- Sensor-Surface: 3mm (Mechanical Surface Detection), $z = 2.0, 32.0$
- Electronics: DAE4 Sn1531; Calibrated: 2018-1-3
- Phantom: SAM8; Type: SAM; Serial: 1940
- DASY52 52.10.1(1476); SEMCAD X 14.6.11(7439)

Configuration/Head/Area Scan (9x14x1): Measurement grid: $dx=15$ mm, $dy=15$ mm

Maximum value of SAR (measured) = 0.702 W/kg

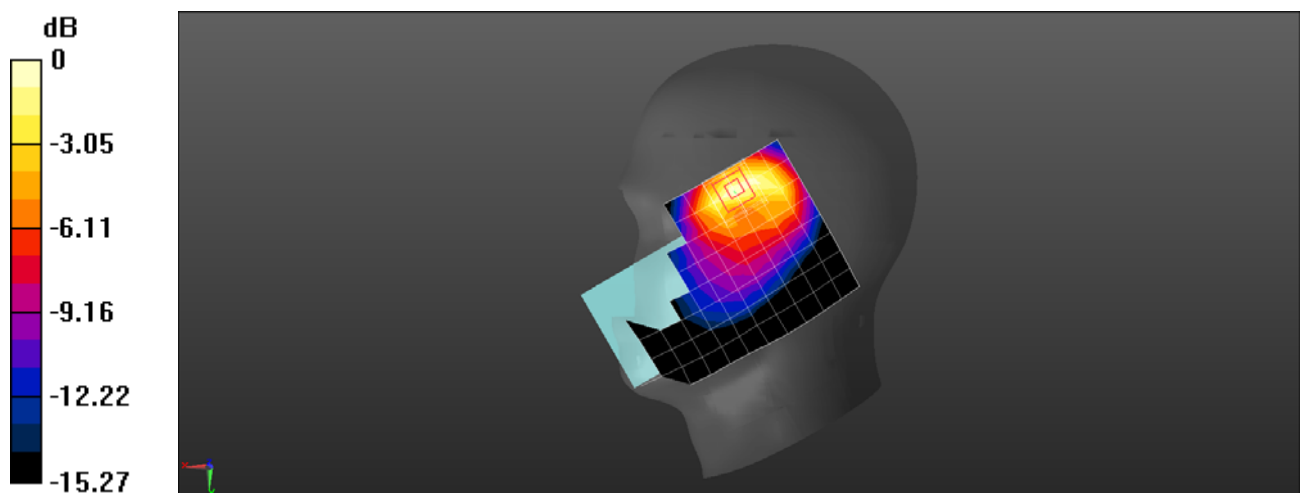
Configuration/Head/Zoom Scan (5x5x5)/Cube 0: Measurement grid: $dx=8$ mm, $dy=8$ mm, $dz=5$ mm

Reference Value = 11.57 V/m; Power Drift = -0.15 dB

Peak SAR (extrapolated) = 1.04 W/kg

SAR(1 g) = 0.514 W/kg; SAR(10 g) = 0.273 W/kg

Maximum value of SAR (measured) = 0.686 W/kg



0 dB = 0.686 W/kg = -1.64 dBW/kg

Test Laboratory: HUAWEI SAR/HAC Lab

HRY-LX2 LTE Band 5 10M QPSK 1RB 0 Offset 20450CH Right Cheek with Battery3-Main Antenna

DUT: HRY-LX2; Type: Smart Phone; Serial: SAR5

Communication System: UID 0, LTE-FDD (SC-FDMA, 10MHz, QPSK/16-QAM) (0); Frequency: 829 MHz; Duty Cycle: 1:1

Medium parameters used: $f = 829$ MHz; $\sigma = 0.927$ S/m; $\epsilon_r = 40.074$; $\rho = 1000$ kg/m³

Phantom section: Right Section

DASY Configuration:

- Probe: ES3DV3 - SN3071; ConvF(5.92, 5.92, 5.92) @ 829 MHz; Calibrated: 2017-12-18
- Sensor-Surface: 3mm (Mechanical Surface Detection), $z = 2.0, 32.0$
- Electronics: DAE4 Sn1531; Calibrated: 2018-1-3
- Phantom: SAM8; Type: SAM; Serial: 1940
- DASY52 52.10.1(1476); SEMCAD X 14.6.11(7439)

Configuration/Head/Area Scan (9x14x1): Measurement grid: $dx=15$ mm, $dy=15$ mm

Maximum value of SAR (measured) = 0.0317 W/kg

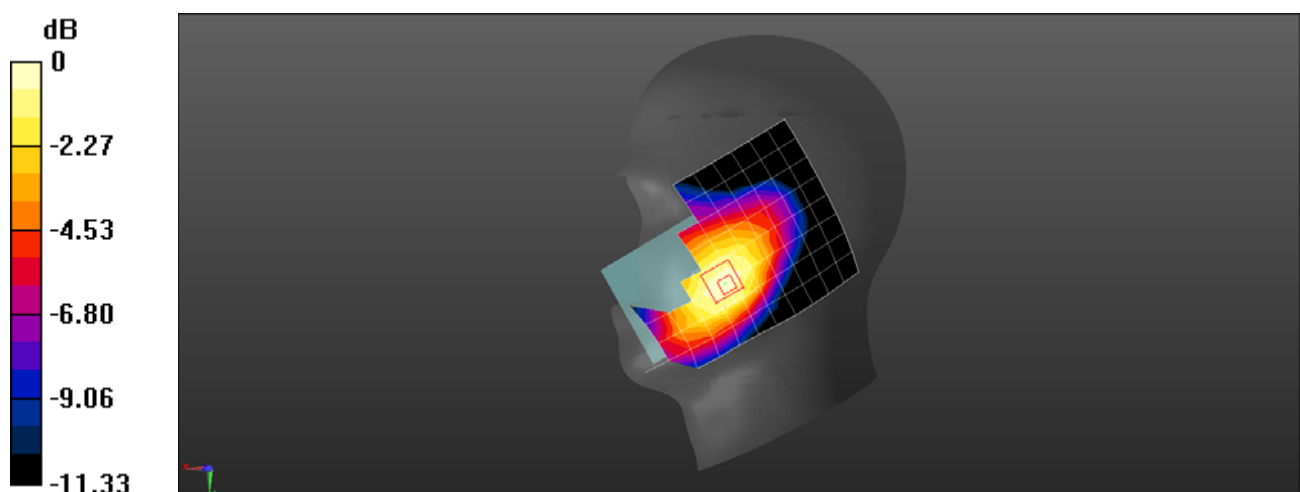
Configuration/Head/Zoom Scan (5x5x5)/Cube 0: Measurement grid: $dx=8$ mm, $dy=8$ mm, $dz=5$ mm

Reference Value = 2.087 V/m; Power Drift = 0.09 dB

Peak SAR (extrapolated) = 0.0390 W/kg

SAR(1 g) = 0.030 W/kg; SAR(10 g) = 0.022 W/kg

Maximum value of SAR (measured) = 0.0321 W/kg



0 dB = 0.0321 W/kg = -14.93 dBW/kg

Test Laboratory: HUAWEI SAR/HAC Lab

HRY-LX2 LTE Band 5 10M QPSK 1RB 25 Offset 20450CH Back Side 15mm with Battery2-Second Antenna

DUT: HRY-LX2; Type: Smart Phone; Serial: SAR3

Communication System: UID 0, LTE-FDD (SC-FDMA, 10MHz, QPSK/16-QAM) (0); Frequency: 829 MHz; Duty Cycle: 1:1

Medium parameters used: $f = 829$ MHz; $\sigma = 1.01$ S/m; $\epsilon_r = 54.891$; $\rho = 1000$ kg/m³

Phantom section: Flat Section

DASY Configuration:

- Probe: EX3DV4 - SN7505; ConvF(9.73, 9.73, 9.73) @ 829 MHz; Calibrated: 2018-6-12
- Sensor-Surface: 1.4mm (Mechanical Surface Detection), $z = -9.0, 31.0$
- Electronics: DAE4 Sn1235; Calibrated: 2017-11-16
- Phantom: SAM6; Type: SAM; Serial: 1894
- DASY52 52.10.1(1476); SEMCAD X 14.6.11(7439)

Configuration/Body/Area Scan (9x15x1): Measurement grid: $dx=15$ mm, $dy=15$ mm

Maximum value of SAR (measured) = 0.434 W/kg

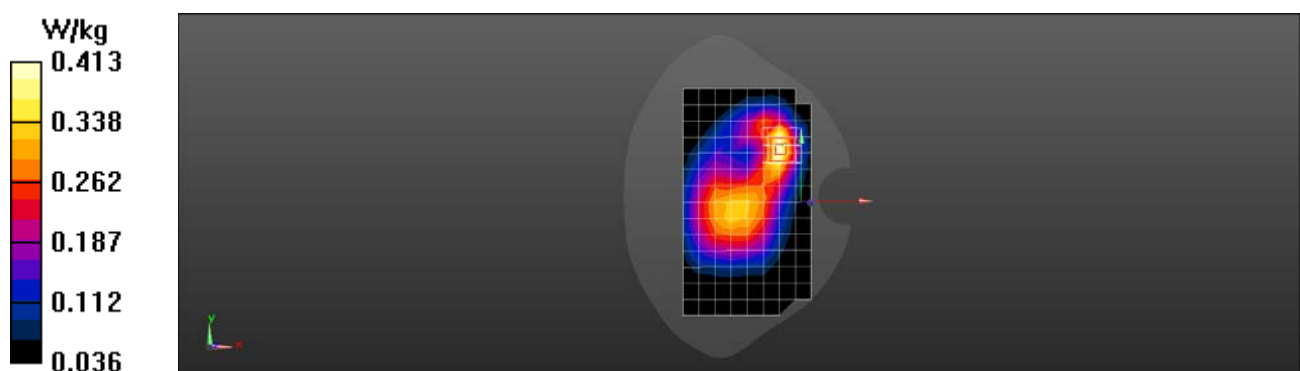
Configuration/Body/Zoom Scan (5x5x7)/Cube 0: Measurement grid: $dx=8$ mm, $dy=8$ mm, $dz=5$ mm

Reference Value = 18.00 V/m; Power Drift = -0.09 dB

Peak SAR (extrapolated) = 0.446 W/kg

SAR(1 g) = 0.333 W/kg; SAR(10 g) = 0.228 W/kg

Maximum value of SAR (measured) = 0.413 W/kg



Test Laboratory: HUAWEI SAR/HAC Lab

HRY-LX2 LTE Band 5 10M QPSK 1RB 0 Offset 20450CH Back Side 15mm with Battery4-Main Antenna

DUT: HRY-LX2; Type: Smart Phone; Serial: SAR3

Communication System: UID 0, LTE-FDD (SC-FDMA, 10MHz, QPSK/16-QAM) (0); Frequency: 829 MHz; Duty Cycle: 1:1

Medium parameters used: $f = 829$ MHz; $\sigma = 1.01$ S/m; $\epsilon_r = 54.891$; $\rho = 1000$ kg/m³

Phantom section: Flat Section

DASY Configuration:

- Probe: EX3DV4 - SN7505; ConvF(9.73, 9.73, 9.73) @ 829 MHz; Calibrated: 2018-6-12
- Sensor-Surface: 1.4mm (Mechanical Surface Detection), $z = 1.0, 31.0$
- Electronics: DAE4 Sn1235; Calibrated: 2017-11-16
- Phantom: SAM6; Type: SAM; Serial: 1894
- DASY52 52.10.1(1476); SEMCAD X 14.6.11(7439)

Configuration/Body/Area Scan (9x15x1): Measurement grid: $dx=15$ mm, $dy=15$ mm

Maximum value of SAR (measured) = 0.145 W/kg

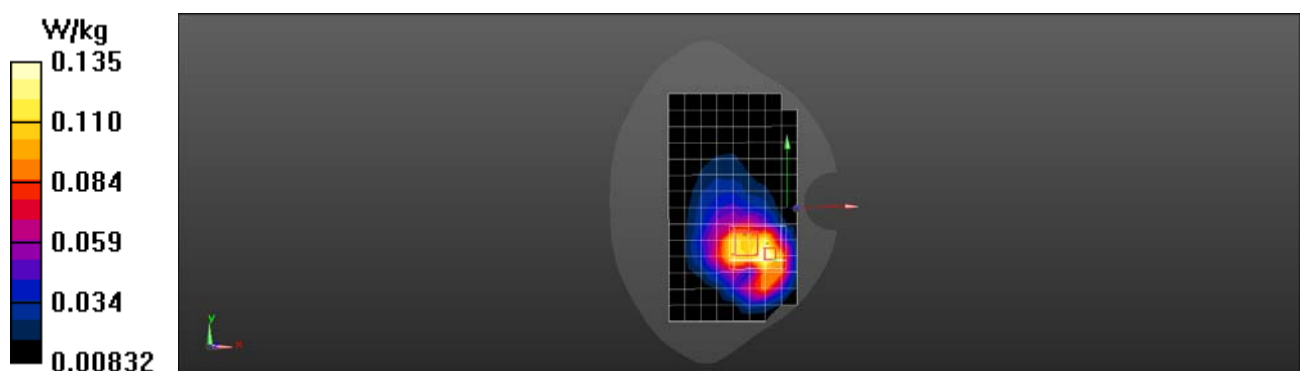
Configuration/Body/Zoom Scan (7x6x7)/Cube 0: Measurement grid: $dx=8$ mm, $dy=8$ mm, $dz=5$ mm

Reference Value = 6.170 V/m; Power Drift = -0.16 dB

Peak SAR (extrapolated) = 0.150 W/kg

SAR(1 g) = 0.107 W/kg; SAR(10 g) = 0.075 W/kg

Maximum value of SAR (measured) = 0.135 W/kg



Test Laboratory: HUAWEI SAR/HAC Lab

HRY-LX2 LTE Band 5 10M QPSK 1RB 0 Offset 20525CH Left Side 10mm-Second Antenna

DUT: HRY-LX2; Type: Smart Phone; Serial: SAR3

Communication System: UID 0, LTE-FDD (SC-FDMA, 10MHz, QPSK/16-QAM) (0); Frequency: 836.5 MHz; Duty Cycle: 1:1

Medium parameters used (interpolated): $f = 836.5$ MHz; $\sigma = 0.983$ S/m; $\epsilon_r = 53.216$; $\rho = 1000$ kg/m³

Phantom section: Flat Section

DASY Configuration:

- Probe: EX3DV4 - SN7505; ConvF(9.73, 9.73, 9.73) @ 836.5 MHz; Calibrated: 2018-6-12
- Sensor-Surface: 1.4mm (Mechanical Surface Detection), $z = 1.0, 31.0$
- Electronics: DAE4 Sn1235; Calibrated: 2017-11-16
- Phantom: SAM6; Type: SAM; Serial: 1894
- DASY52 52.10.1(1476); SEMCAD X 14.6.11(7439)

Configuration/Body/Area Scan (6x15x1): Measurement grid: $dx=15$ mm, $dy=15$ mm

[Info: Interpolated medium parameters used for SAR evaluation.](#)

Maximum value of SAR (measured) = 0.673 W/kg

Configuration/Body/Zoom Scan (5x5x7)/Cube 0: Measurement grid: $dx=8$ mm, $dy=8$ mm, $dz=5$ mm

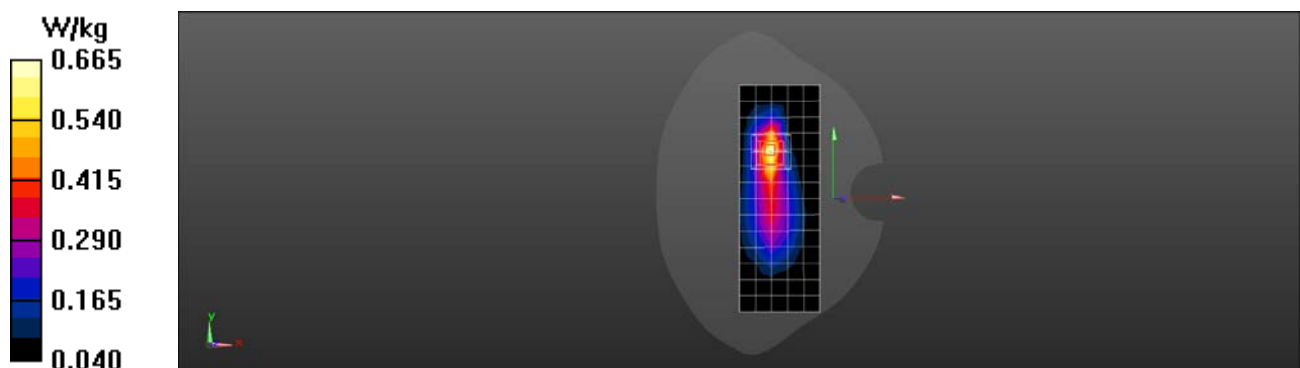
Reference Value = 18.73 V/m; Power Drift = -0.01 dB

Peak SAR (extrapolated) = 0.759 W/kg

SAR(1 g) = 0.486 W/kg; SAR(10 g) = 0.293 W/kg

[Info: Interpolated medium parameters used for SAR evaluation.](#)

Maximum value of SAR (measured) = 0.665 W/kg



Test Laboratory: HUAWEI SAR/HAC Lab

HRY-LX2 LTE Band 5 10M QPSK 1RB 49 Offset 20525CH Back Side 10mm-Main Antenna

DUT: HRY-LX2; Type: Smart Phone; Serial: SAR3

Communication System: UID 0, LTE-FDD (SC-FDMA, 10MHz, QPSK/16-QAM) (0); Frequency: 836.5 MHz; Duty Cycle: 1:1

Medium parameters used (interpolated): $f = 836.5$ MHz; $\sigma = 0.983$ S/m; $\epsilon_r = 53.216$; $\rho = 1000$ kg/m³

Phantom section: Flat Section

DASY Configuration:

- Probe: EX3DV4 - SN7505; ConvF(9.73, 9.73, 9.73) @ 836.5 MHz; Calibrated: 2018-6-12
- Sensor-Surface: 1.4mm (Mechanical Surface Detection), $z = 1.0, 31.0$
- Electronics: DAE4 Sn1235; Calibrated: 2017-11-16
- Phantom: SAM6; Type: SAM; Serial: 1894
- DASY52 52.10.1(1476); SEMCAD X 14.6.11(7439)

Configuration/Body/Area Scan (9x15x1): Measurement grid: dx=15mm, dy=15mm

[Info: Interpolated medium parameters used for SAR evaluation.](#)

Maximum value of SAR (measured) = 0.290 W/kg

Configuration/Body/Zoom Scan (5x6x7)/Cube 0: Measurement grid: dx=8mm, dy=8mm, dz=5mm

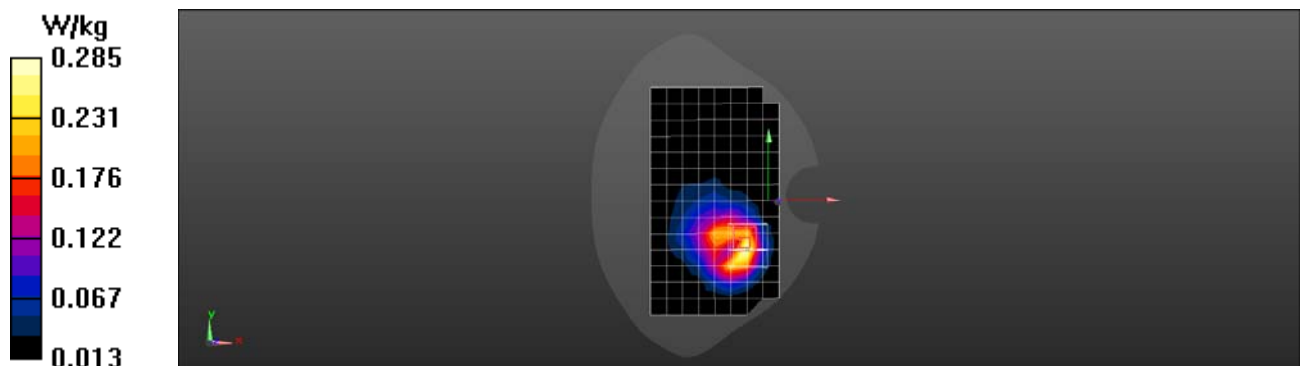
Reference Value = 6.679 V/m; Power Drift = -0.02 dB

Peak SAR (extrapolated) = 0.322 W/kg

SAR(1 g) = 0.207 W/kg; SAR(10 g) = 0.126 W/kg

[Info: Interpolated medium parameters used for SAR evaluation.](#)

Maximum value of SAR (measured) = 0.285 W/kg



Test Laboratory: HUAWEI SAR/HAC Lab

HRY-LX2 LTE Band 7 20M QPSK 1RB 0 Offset 20850CH Left Cheek with Battery4-Main Antenna

DUT: HRY-LX2; Type: Smart Phone; Serial: SAR1

Communication System: UID 0, LTE-FDD (SC-FDMA, 20MHz, QPSK/16-QAM) (0); Frequency: 2510 MHz; Duty Cycle: 1:1

Medium parameters used: $f = 2510$ MHz; $\sigma = 1.846$ S/m; $\epsilon_r = 37.303$; $\rho = 1000$ kg/m³

Phantom section: Left Section

DASY Configuration:

- Probe: EX3DV4 - SN3736; ConvF(6.93, 6.93, 6.93) @ 2510 MHz; Calibrated: 2018-4-27
- Sensor-Surface: 1.4mm (Mechanical Surface Detection), $z = 1.0, 31.0$
- Electronics: DAE4 Sn851; Calibrated: 2018-7-18
- Phantom: SAM1; Type: SAM; Serial: 1475
- DASY52 52.10.1(1476); SEMCAD X 14.6.11(7439)

Configuration/Head/Area Scan (10x16x1): Measurement grid: $dx=12$ mm, $dy=12$ mm

Maximum value of SAR (measured) = 0.572 W/kg

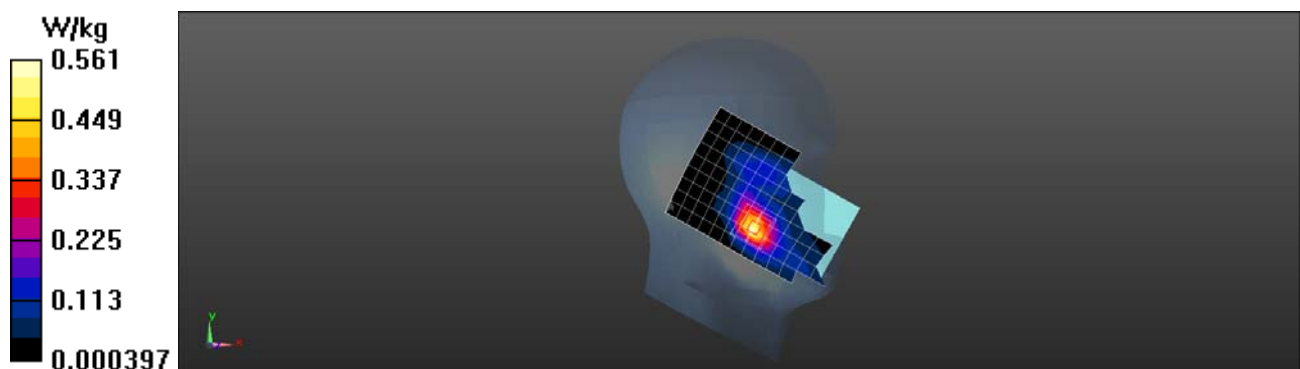
Configuration/Head/Zoom Scan (7x7x7)/Cube 0: Measurement grid: $dx=5$ mm, $dy=5$ mm, $dz=5$ mm

Reference Value = 4.342 V/m; Power Drift = -0.08 dB

Peak SAR (extrapolated) = 0.700 W/kg

SAR(1 g) = 0.367 W/kg; SAR(10 g) = 0.186 W/kg

Maximum value of SAR (measured) = 0.561 W/kg



Test Laboratory: HUAWEI SAR/HAC Lab

HRY-LX2 LTE Band 7 QPSK 20M 1RB 0 Offset 20850CH Back Side 15mm with Battery3-Main Antenna

DUT: HRY-LX2; Type: Smart Phone; Serial: SAR3

Communication System: UID 0, LTE-FDD (SC-FDMA, 20MHz, QPSK/16-QAM) (0); Frequency: 2510 MHz; Duty Cycle: 1:1

Medium parameters used: $f = 2510$ MHz; $\sigma = 2.074$ S/m; $\epsilon_r = 53.189$; $\rho = 1000$ kg/m³

Phantom section: Flat Section

DASY Configuration:

- Probe: EX3DV4 - SN7505; ConvF(7.23, 7.23, 7.23) @ 2510 MHz; Calibrated: 2018-6-12
- Sensor-Surface: 1.4mm (Mechanical Surface Detection), $z = 1.0, 31.0$
- Electronics: DAE4 Sn1235; Calibrated: 2017-11-16
- Phantom: SAM6; Type: SAM; Serial: 1894
- DASY52 52.10.1(1476); SEMCAD X 14.6.11(7439)

Configuration/Body/Area Scan (11x17x1): Measurement grid: $dx=12$ mm, $dy=12$ mm
Maximum value of SAR (measured) = 0.275 W/kg

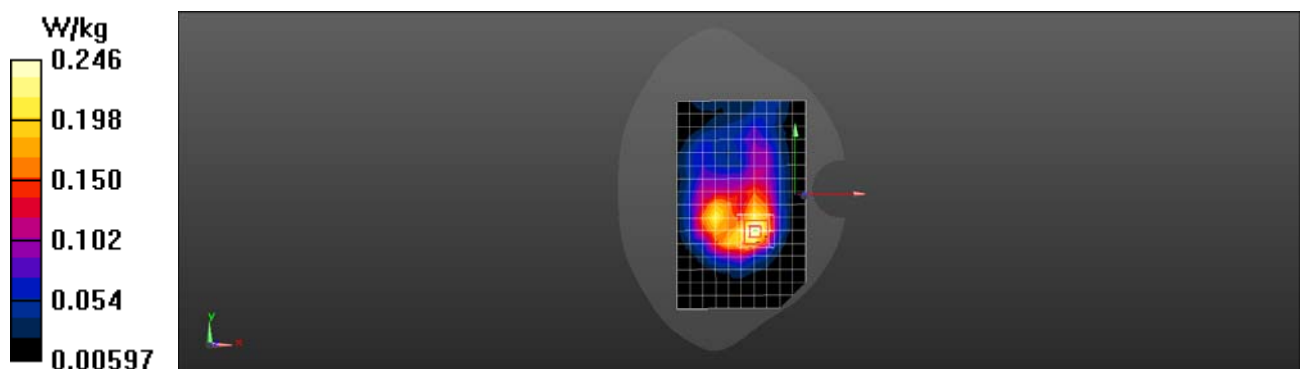
Configuration/Body/Zoom Scan (7x7x7)/Cube 0: Measurement grid: $dx=5$ mm, $dy=5$ mm, $dz=5$ mm

Reference Value = 7.624 V/m; Power Drift = -0.16 dB

Peak SAR (extrapolated) = 0.275 W/kg

SAR(1 g) = 0.181 W/kg; SAR(10 g) = 0.107 W/kg

Maximum value of SAR (measured) = 0.246 W/kg



Test Laboratory: HUAWEI SAR/HAC Lab

HRY-LX2 LTE Band 7 20M QPSK 1RB 99 Offset 21350CH Bottom Side 10mm- Main Antenna

DUT: HRY-LX2; Type: Smart Phone; Serial: SAR1

Communication System: UID 0, LTE-FDD (SC-FDMA, 20MHz, QPSK/16-QAM) (0); Frequency: 2560 MHz; Duty Cycle: 1:1

Medium parameters used: $f = 2560$ MHz; $\sigma = 2.16$ S/m; $\epsilon_r = 51.551$; $\rho = 1000$ kg/m³

Phantom section: Flat Section

DASY Configuration:

- ε Probe: EX3DV4 - SN3744; ConvF(7.35, 7.35, 7.35) @ 2560 MHz; Calibrated: 2018-7-25
- ε Sensor-Surface: 1.4mm (Mechanical Surface Detection), $z = 1.0, 31.0$
- ε Electronics: DAE3 Sn393; Calibrated: 2018-8-14
- ε Phantom: SAM2; Type: SAM; Serial: 1474
- ε DASY52 52.10.1(1476); SEMCAD X 14.6.11(7439)

Configuration/Body/Area Scan (6x11x1): Measurement grid: $dx=12$ mm, $dy=12$ mm

Maximum value of SAR (measured) = 0.539 W/kg

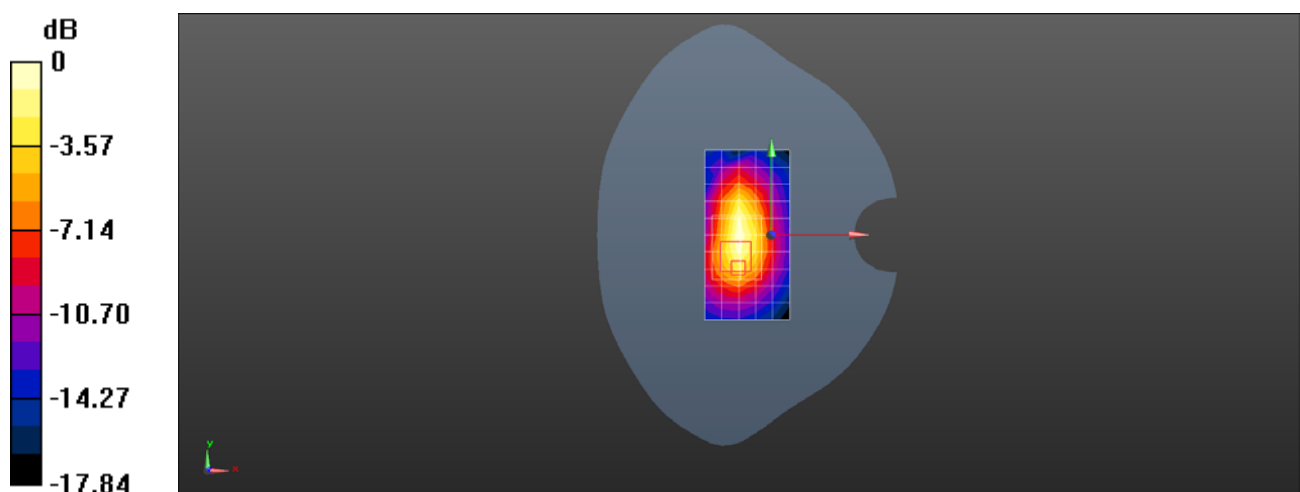
Configuration/Body/Zoom Scan (8x10x7)/Cube 0: Measurement grid: $dx=5$ mm, $dy=5$ mm, $dz=5$ mm

Reference Value = 20.94 V/m; Power Drift = 0.19 dB

Peak SAR (extrapolated) = 0.846 W/kg

SAR(1 g) = 0.376 W/kg; SAR(10 g) = 0.200 W/kg

Maximum value of SAR (measured) = 0.671 W/kg



0 dB = 0.539 W/kg = -2.68 dBW/kg

Test Laboratory: HUAWEI SAR/HAC Lab

HRY-LX2 LTE Band 38 20M QPSK 1RB 99 Offset 37850CH Left Cheek-Main Antenna

DUT: HRY-LX2; Type: Smart Phone; Serial: SAR1

Communication System: UID 0, LTE-TDD (SC-FDMA, 20MHz, QPSK/16-QAM) (0); Frequency: 2580 MHz; Duty Cycle: 1:1.57943

Medium parameters used: $f = 2580$ MHz; $\sigma = 1.9$ S/m; $\epsilon_r = 37.273$; $\rho = 1000$ kg/m³

Phantom section: Left Section

DASY Configuration:

- Probe: EX3DV4 - SN3736; ConvF(6.93, 6.93, 6.93) @ 2580 MHz; Calibrated: 2018-4-27
- Sensor-Surface: 1.4mm (Mechanical Surface Detection), $z = 1.0, 31.0$
- Electronics: DAE4 Sn851; Calibrated: 2018-7-18
- Phantom: SAM1; Type: SAM; Serial: 1475
- DASY52 52.10.1(1476); SEMCAD X 14.6.11(7439)

Configuration/Head/Area Scan (10x17x1): Measurement grid: $dx=12$ mm, $dy=12$ mm

Maximum value of SAR (measured) = 0.265 W/kg

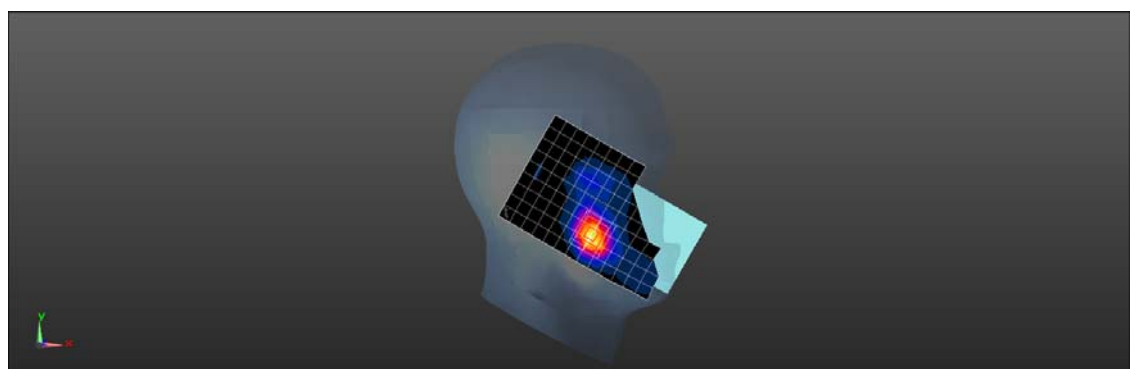
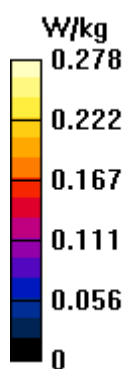
Configuration/Head/Zoom Scan (7x7x7)/Cube 0: Measurement grid: $dx=5$ mm, $dy=5$ mm, $dz=5$ mm

Reference Value = 2.226 V/m; Power Drift = -0.18 dB

Peak SAR (extrapolated) = 0.344 W/kg

SAR(1 g) = 0.171 W/kg; SAR(10 g) = 0.086 W/kg

Maximum value of SAR (measured) = 0.278 W/kg



Test Laboratory: HUAWEI SAR/HAC Lab

HRY-LX2 LTE Band 38 QPSK 20M 1RB 99 Offset 37850CH Back Side 15mm-Main Antenna

DUT: HRY-LX2; Type: Smart Phone; Serial: SAR3

Communication System: UID 0, LTE-TDD (SC-FDMA, 20MHz, QPSK/16-QAM) (0); Frequency: 2580 MHz; Duty Cycle: 1:1.57943

Medium parameters used: $f = 2580$ MHz; $\sigma = 2.168$ S/m; $\epsilon_r = 50.971$; $\rho = 1000$ kg/m³

Phantom section: Flat Section

DASY Configuration:

- Probe: EX3DV4 - SN7505; ConvF(7.23, 7.23, 7.23) @ 2580 MHz; Calibrated: 2018-6-12
- Sensor-Surface: 1.4mm (Mechanical Surface Detection), $z = 1.0, 31.0$
- Electronics: DAE4 Sn1235; Calibrated: 2017-11-16
- Phantom: SAM6; Type: SAM; Serial: 1894
- DASY52 52.10.1(1476); SEMCAD X 14.6.11(7439)

Configuration/Body/Area Scan (11x17x1): Measurement grid: $dx=12$ mm, $dy=12$ mm

Maximum value of SAR (measured) = 0.165 W/kg

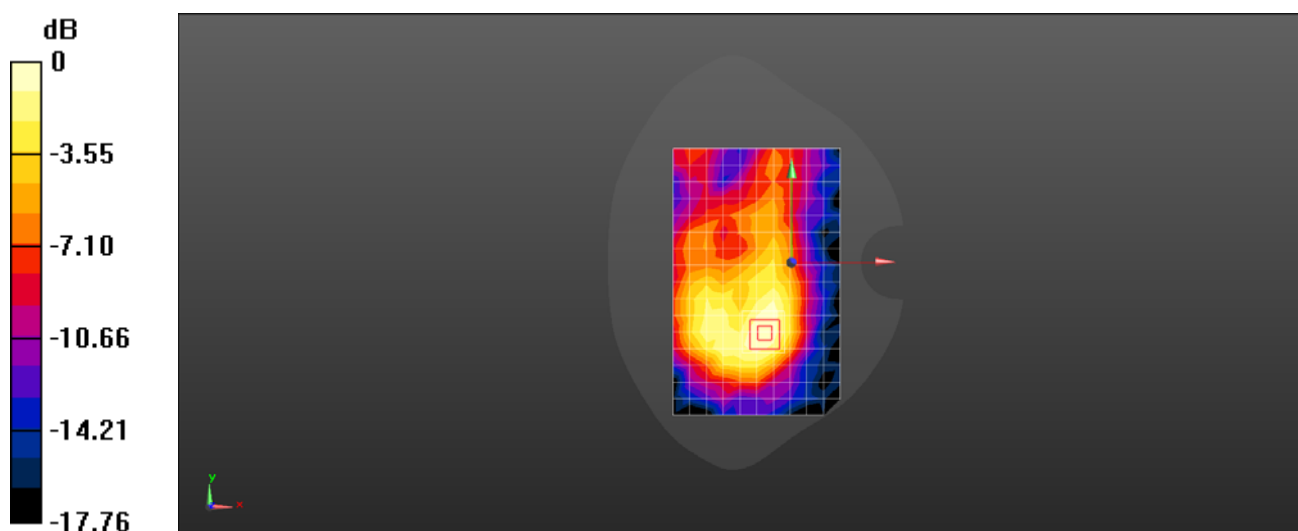
Configuration/Body/Zoom Scan (7x7x7)/Cube 0: Measurement grid: $dx=5$ mm, $dy=5$ mm, $dz=5$ mm

Reference Value = 4.873 V/m; Power Drift = 0.11 dB

Peak SAR (extrapolated) = 0.183 W/kg

SAR(1 g) = 0.114 W/kg; SAR(10 g) = 0.064 W/kg

Maximum value of SAR (measured) = 0.161 W/kg



0 dB = 0.161 W/kg = -7.93 dBW/kg

Test Laboratory: HUAWEI SAR/HAC Lab

HRY-LX2 LTE Band 38 20M QPSK 1RB 99 Offset 37850CH Bottom Side 10mm with Battery4-Main Antenna

DUT: HRY-LX2; Type: Smart Phone; Serial: SAR1

Communication System: UID 0, LTE-TDD (SC-FDMA, 20MHz, QPSK/16-QAM) (0); Frequency: 2580 MHz; Duty Cycle: 1:1.57943

Medium parameters used: $f = 2580$ MHz; $\sigma = 2.182$ S/m; $\epsilon_r = 51.538$; $\rho = 1000$ kg/m³

Phantom section: Flat Section

DASY Configuration:

- ε Probe: EX3DV4 - SN3744; ConvF(7.35, 7.35, 7.35) @ 2580 MHz; Calibrated: 2018-7-25
- ε Sensor-Surface: 1.4mm (Mechanical Surface Detection), $z = 1.0, 31.0$
- ε Electronics: DAE3 Sn393; Calibrated: 2018-8-14
- ε Phantom: SAM2; Type: SAM; Serial: 1474
- ε DASY52 52.10.1(1476); SEMCAD X 14.6.11(7439)

Configuration/Body/Area Scan (6x11x1): Measurement grid: $dx=12$ mm, $dy=12$ mm

Maximum value of SAR (measured) = 0.428 W/kg

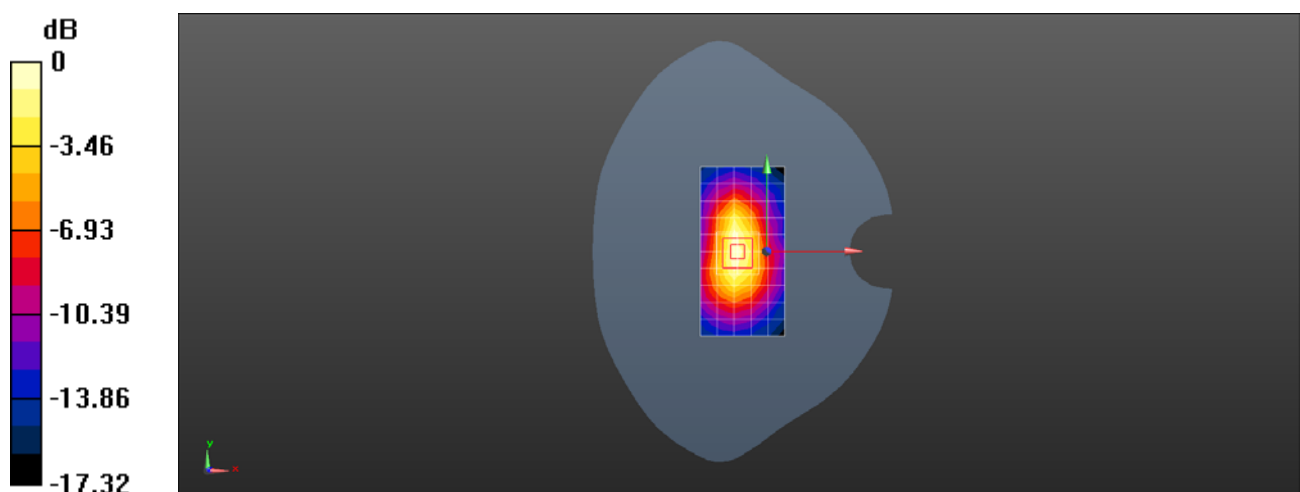
Configuration/Body/Zoom Scan (7x7x7)/Cube 0: Measurement grid: $dx=5$ mm, $dy=5$ mm, $dz=5$ mm

Reference Value = 14.48 V/m; Power Drift = 0.10 dB

Peak SAR (extrapolated) = 0.568 W/kg

SAR(1 g) = 0.279 W/kg; SAR(10 g) = 0.136 W/kg

Maximum value of SAR (measured) = 0.456 W/kg



0 dB = 0.428 W/kg = -3.69 dBW/kg

Test Laboratory: HUAWEI SAR/HAC Lab

HRY-LX2 LTE Band 41 20M QPSK 1RB 50 Offset 40540CH Left Cheek with Battery2-Main Antenna

DUT: HRY-LX2; Type: Smart Phone; Serial: SAR3

Communication System: UID 0, LTE-TDD (SC-FDMA, 20MHz, QPSK/16-QAM) (0); Frequency: 2585 MHz; Duty Cycle: 1:1.57943

Medium parameters used (interpolated): $f = 2585$ MHz; $\sigma = 1.955$ S/m; $\epsilon_r = 37.51$; $\rho = 1000$ kg/m³

Phantom section: Left Section

DASY Configuration:

- Probe: EX3DV4 - SN7505; ConvF(7.18, 7.18, 7.18) @ 2585 MHz; Calibrated: 2018-6-12
- Sensor-Surface: 1.4mm (Mechanical Surface Detection), $z = 1.0, 31.0$
- Electronics: DAE4 Sn1235; Calibrated: 2017-11-16
- Phantom: SAM5; Type: SAM; Serial: 1892
- DASY52 52.10.1(1476); SEMCAD X 14.6.11(7439)

Configuration/Head/Area Scan (10x17x1): Measurement grid: $dx=12$ mm, $dy=12$ mm

[Info: Interpolated medium parameters used for SAR evaluation.](#)

Maximum value of SAR (measured) = 0.269 W/kg

Configuration/Head/Zoom Scan (9x7x7)/Cube 0: Measurement grid: $dx=5$ mm, $dy=5$ mm, $dz=5$ mm

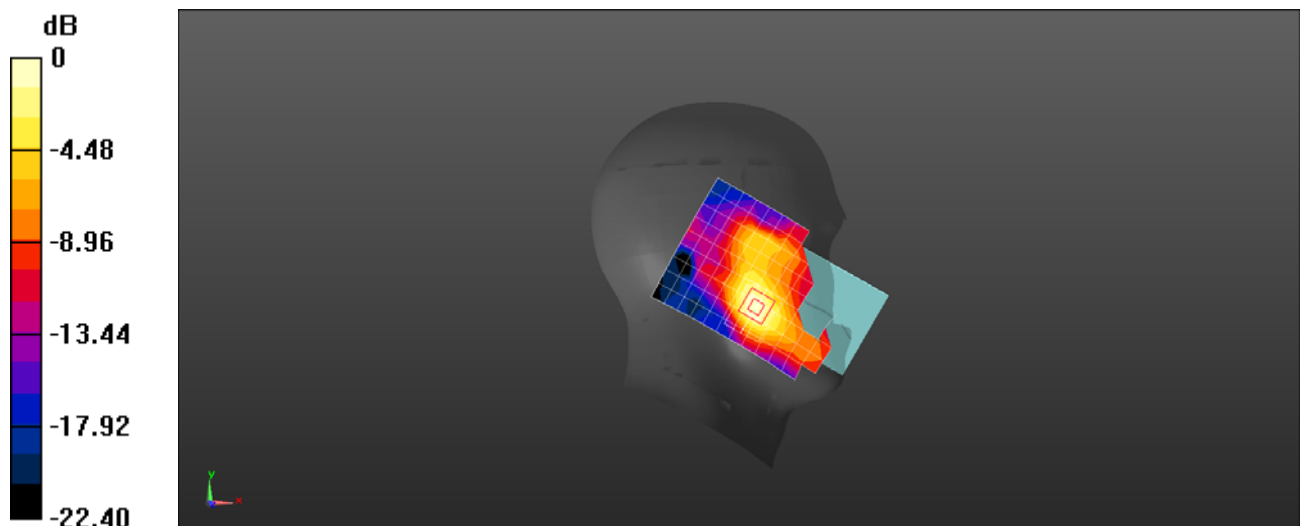
Reference Value = 2.824 V/m; Power Drift = 0.08 dB

Peak SAR (extrapolated) = 0.366 W/kg

SAR(1 g) = 0.215 W/kg; SAR(10 g) = 0.117 W/kg

[Info: Interpolated medium parameters used for SAR evaluation.](#)

Maximum value of SAR (measured) = 0.307 W/kg



0 dB = 0.307 W/kg = -5.13 dBW/kg

Test Laboratory: HUAWEI SAR/HAC Lab

HRY-LX2 LTE Band 41 20M QPSK 1RB 50 Offset 40540CH Front Side 15mm with Battery4-Main Antenna

DUT: HRY-LX2; Type: Smart Phone; Serial: SAR3

Communication System: UID 0, LTE-TDD (SC-FDMA, 20MHz, QPSK/16-QAM) (0); Frequency: 2585 MHz; Duty Cycle: 1:1.57943

Medium parameters used (interpolated): $f = 2585$ MHz; $\sigma = 2.188$ S/m; $\epsilon_r = 52$; $\rho = 1000$ kg/m³

Phantom section: Flat Section

DASY Configuration:

- Probe: EX3DV4 - SN7505; ConvF(7.23, 7.23, 7.23) @ 2585 MHz; Calibrated: 2018-6-12
- Sensor-Surface: 1.4mm (Mechanical Surface Detection), $z = 1.0, 31.0$
- Electronics: DAE4 Sn1235; Calibrated: 2017-11-16
- Phantom: SAM6; Type: SAM; Serial: 1894
- DASY52 52.10.1(1476); SEMCAD X 14.6.11(7439)

Configuration/Body/Area Scan (11x17x1): Measurement grid: $dx=12$ mm, $dy=12$ mm

[Info: Interpolated medium parameters used for SAR evaluation.](#)

Maximum value of SAR (measured) = 0.141 W/kg

Configuration/Body/Zoom Scan (7x7x7)/Cube 0: Measurement grid: $dx=5$ mm, $dy=5$ mm, $dz=5$ mm

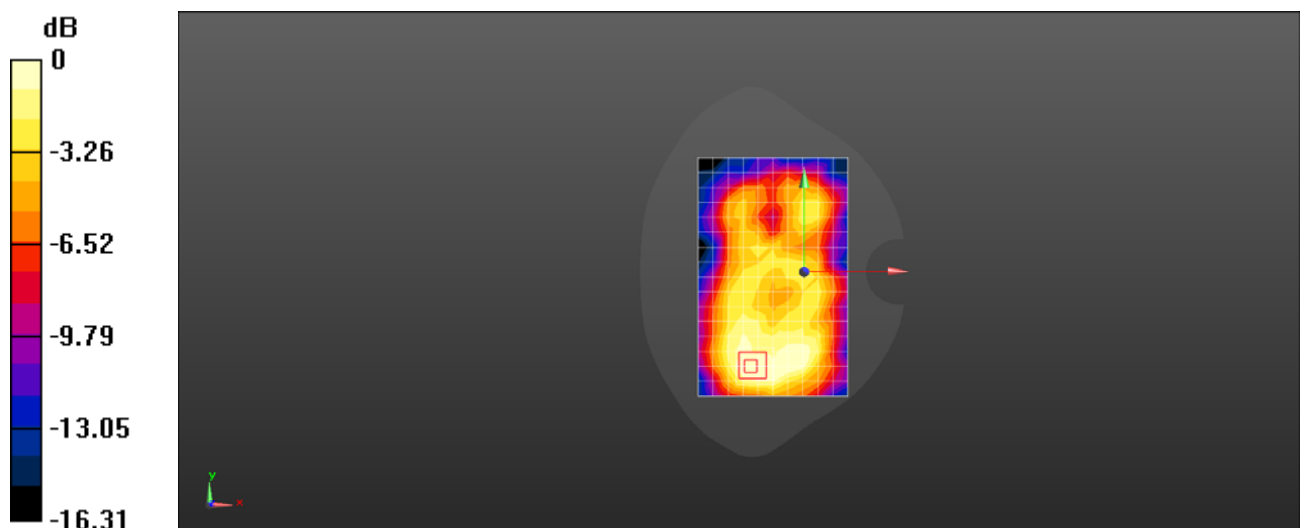
Reference Value = 4.862 V/m; Power Drift = -0.09 dB

Peak SAR (extrapolated) = 0.133 W/kg

SAR(1 g) = 0.086 W/kg; SAR(10 g) = 0.052 W/kg

[Info: Interpolated medium parameters used for SAR evaluation.](#)

Maximum value of SAR (measured) = 0.118 W/kg



0 dB = 0.118 W/kg = -9.28 dBW/kg

Test Laboratory: HUAWEI SAR/HAC Lab

HRY-LX2 LTE Band 41 20M QPSK 50%RB 0 Offset 41140CH Bottom Side 10mm with Battery4-Main Antenna

DUT: HRY-LX2; Type: Smart Phone; Serial: SAR1

Communication System: UID 0, LTE-TDD (SC-FDMA, 20MHz, QPSK/16-QAM) (0); Frequency: 2645 MHz; Duty Cycle: 1:1.57943

Medium parameters used (interpolated): $f = 2645$ MHz; $\sigma = 2.244$ S/m; $\epsilon_r = 51.422$; $\rho = 1000$ kg/m³

Phantom section: Flat Section

DASY Configuration:

- ε Probe: EX3DV4 - SN3744; ConvF(7.35, 7.35, 7.35) @ 2645 MHz; Calibrated: 2018-7-25
- ε Sensor-Surface: 1.4mm (Mechanical Surface Detection), $z = 1.0, 31.0$
- ε Electronics: DAE3 Sn393; Calibrated: 2018-8-14
- ε Phantom: SAM2; Type: SAM; Serial: 1474
- ε DASY52 52.10.1(1476); SEMCAD X 14.6.11(7439)

Configuration/Body/Area Scan (6x11x1): Measurement grid: $dx=12$ mm, $dy=12$ mm

[Info: Interpolated medium parameters used for SAR evaluation.](#)

Maximum value of SAR (measured) = 0.373 W/kg

Configuration/Body/Zoom Scan (7x7x7)/Cube 0: Measurement grid: $dx=5$ mm, $dy=5$ mm, $dz=5$ mm

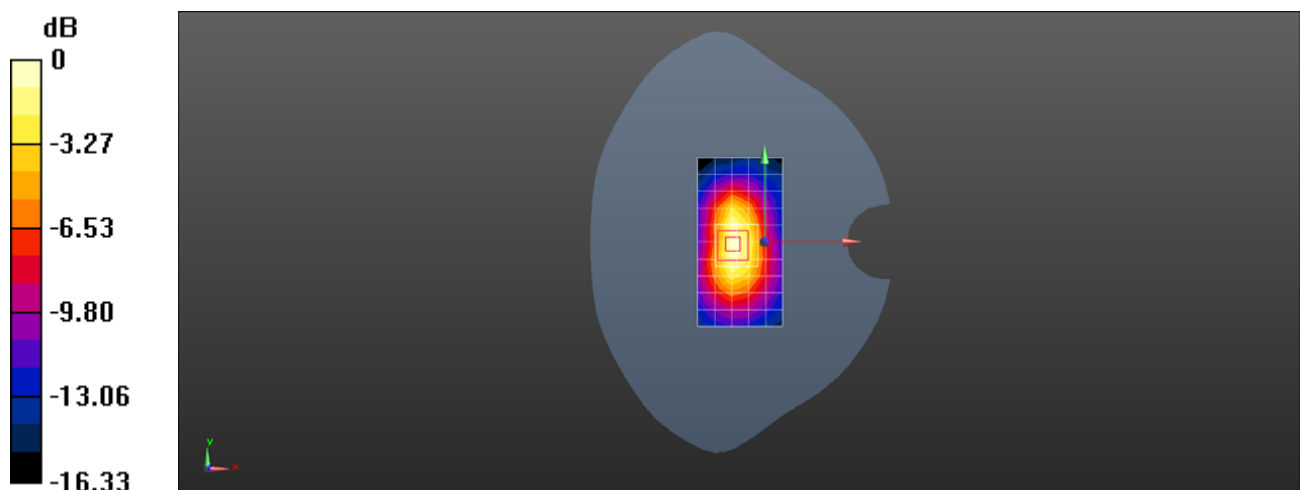
Reference Value = 12.98 V/m; Power Drift = 0.19 dB

Peak SAR (extrapolated) = 0.531 W/kg

SAR(1 g) = 0.255 W/kg; SAR(10 g) = 0.122 W/kg

[Info: Interpolated medium parameters used for SAR evaluation.](#)

Maximum value of SAR (measured) = 0.403 W/kg



0 dB = 0.373 W/kg = -4.28 dBW/kg

Test Laboratory: HUAWEI SAR/HAC Lab

HRY-LX2 WiFi 2.4G 802.11b 6CH Left Cheek

DUT: HRY-LX2; Type: Smart Phone; Serial: SAR2

Communication System: UID 0, WiFi(802.11a/b/g/n/ac) (0); Frequency: 2437 MHz; Duty Cycle: 1:1
Medium parameters used (interpolated): $f = 2437$ MHz; $\sigma = 1.802$ S/m; $\epsilon_r = 38.022$; $\rho = 1000$ kg/m³
Phantom section: Left Section

DASY Configuration:

- Probe: EX3DV4 - SN3736; ConvF(7.13, 7.13, 7.13) @ 2437 MHz; Calibrated: 2018-4-27
- Sensor-Surface: 1.4mm (Mechanical Surface Detection), $z = 1.0, 31.0$
- Electronics: DAE4 Sn1554; Calibrated: 2018-6-5
- Phantom: SAM3; Type: SAM; Serial: 1597
- DASY52 52.10.1(1476); SEMCAD X 14.6.11(7439)

Configuration/Head/Area Scan (11x17x1): Measurement grid: $dx=12$ mm, $dy=12$ mm

[Info: Interpolated medium parameters used for SAR evaluation.](#)

Maximum value of SAR (measured) = 0.340 W/kg

Configuration/Head/Zoom Scan (7x8x7)/Cube 0: Measurement grid: $dx=5$ mm, $dy=5$ mm, $dz=5$ mm

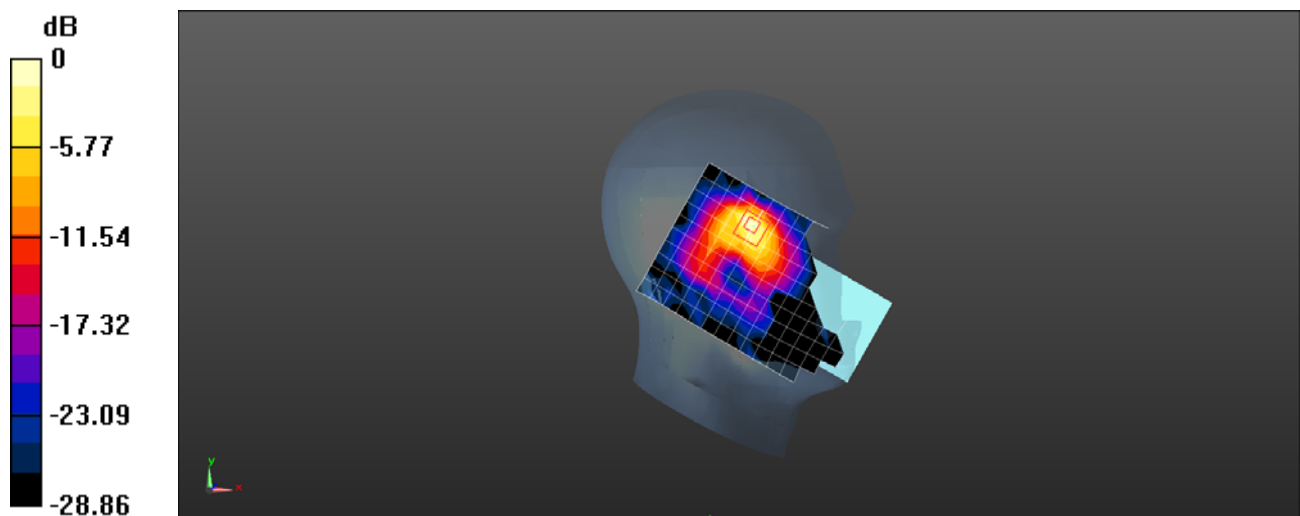
Reference Value = 4.290 V/m; Power Drift = 0.16 dB

Peak SAR (extrapolated) = 0.565 W/kg

SAR(1 g) = 0.205 W/kg; SAR(10 g) = 0.085 W/kg

[Info: Interpolated medium parameters used for SAR evaluation.](#)

Maximum value of SAR (measured) = 0.404 W/kg



0 dB = 0.404 W/kg = -3.94 dBW/kg

Test Laboratory: HUAWEI SAR/HAC Lab

HRY-LX2 WiFi 2.4G 802.11b 6CH Back Side 15mm with Battery2

DUT: HRY-LX2; Type: Smart Phone; Serial: SAR3

Communication System: UID 0, WiFi(802.11a/b/g/n) (0); Frequency: 2437 MHz; Duty Cycle: 1:1
Medium parameters used (interpolated): $f = 2437$ MHz; $\sigma = 1.988$ S/m; $\epsilon_r = 51.795$; $\rho = 1000$ kg/m³
Phantom section: Flat Section

DASY Configuration:

- Probe: EX3DV4 - SN7505; ConvF(7.28, 7.28, 7.28) @ 2437 MHz; Calibrated: 2018-6-12
- Sensor-Surface: 1.4mm (Mechanical Surface Detection), $z = 1.0, 31.0$
- Electronics: DAE4 Sn916; Calibrated: 2017-12-14
- Phantom: SAM6; Type: SAM; Serial: 1894
- DASY52 52.10.1(1476); SEMCAD X 14.6.11(7439)

Configuration/Body/Area Scan (11x17x1): Measurement grid: $dx=12$ mm, $dy=12$ mm

[Info: Interpolated medium parameters used for SAR evaluation.](#)

Maximum value of SAR (measured) = 0.178 W/kg

Configuration/Body/Zoom Scan (7x7x7)/Cube 0: Measurement grid: $dx=5$ mm, $dy=5$ mm, $dz=5$ mm

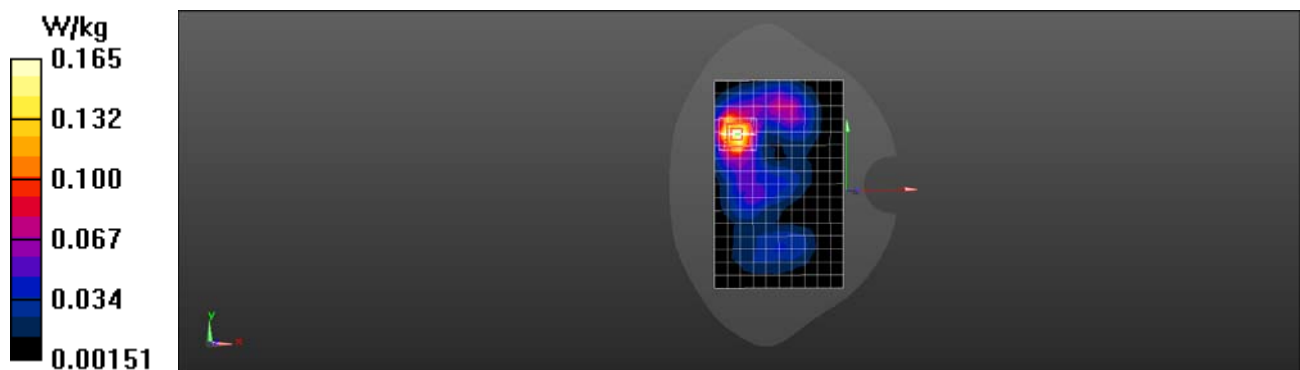
Reference Value = 4.809 V/m; Power Drift = 0.14 dB

Peak SAR (extrapolated) = 0.179 W/kg

SAR(1 g) = 0.123 W/kg; SAR(10 g) = 0.069 W/kg

[Info: Interpolated medium parameters used for SAR evaluation.](#)

Maximum value of SAR (measured) = 0.165 W/kg



Test Laboratory: HUAWEI SAR/HAC Lab

HRY-LX2 WiFi 2.4G 802.11b 6CH Back Side 10mm

DUT: HRY-LX2; Type: Smart Phone; Serial: SAR3

Communication System: UID 0, WiFi(802.11a/b/g/n) (0); Frequency: 2437 MHz; Duty Cycle: 1:1
Medium parameters used (interpolated): $f = 2437$ MHz; $\sigma = 1.988$ S/m; $\epsilon_r = 51.795$; $\rho = 1000$ kg/m³
Phantom section: Flat Section

DASY Configuration:

- Probe: EX3DV4 - SN7505; ConvF(7.28, 7.28, 7.28) @ 2437 MHz; Calibrated: 2018-6-12
- Sensor-Surface: 1.4mm (Mechanical Surface Detection), $z = 1.0, 31.0$
- Electronics: DAE4 Sn916; Calibrated: 2017-12-14
- Phantom: SAM6; Type: SAM; Serial: 1894
- DASY52 52.10.1(1476); SEMCAD X 14.6.11(7439)

Configuration/Body/Area Scan (11x17x1): Measurement grid: $dx=12$ mm, $dy=12$ mm

[Info: Interpolated medium parameters used for SAR evaluation.](#)

Maximum value of SAR (measured) = 0.425 W/kg

Configuration/Body/Zoom Scan (7x7x7)/Cube 0: Measurement grid: $dx=5$ mm, $dy=5$ mm, $dz=5$ mm

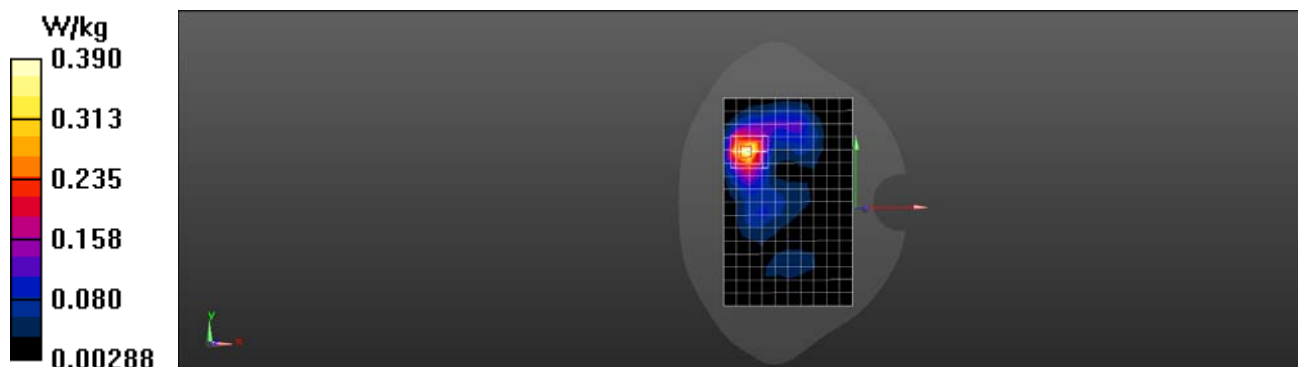
Reference Value = 7.589 V/m; Power Drift = 0.08 dB

Peak SAR (extrapolated) = 0.440 W/kg

SAR(1 g) = 0.283 W/kg; SAR(10 g) = 0.149 W/kg

[Info: Interpolated medium parameters used for SAR evaluation.](#)

Maximum value of SAR (measured) = 0.390 W/kg



Test Laboratory: HUAWEI SAR/HAC Lab

HRY-LX2 BT DH5 39CH Left Cheek with Battery2

DUT: HRY-LX2; Type: Smart Phone; Serial: SAR2

Communication System: UID 0, BT (0); Frequency: 2441 MHz; Duty Cycle: 1:1

Medium parameters used (interpolated): $f = 2441$ MHz; $\sigma = 1.853$ S/m; $\epsilon_r = 38.305$; $\rho = 1000$ kg/m³

Phantom section: Left Section

DASY Configuration:

- Probe: EX3DV4 - SN3736; ConvF(7.13, 7.13, 7.13) @ 2441 MHz; Calibrated: 2018-4-27
- Sensor-Surface: 1.4mm (Mechanical Surface Detection), $z = 1.0, 31.0$
- Electronics: DAE4 Sn1554; Calibrated: 2018-6-5
- Phantom: SAM3; Type: SAM; Serial: 1597
- DASY52 52.10.1(1476); SEMCAD X 14.6.11(7439)

Configuration/Head/Area Scan (10x16x1): Measurement grid: $dx=12$ mm, $dy=12$ mm

[Info: Interpolated medium parameters used for SAR evaluation.](#)

Maximum value of SAR (measured) = 0.0767 W/kg

Configuration/Head/Zoom Scan (7x8x7)/Cube 0: Measurement grid: $dx=5$ mm, $dy=5$ mm, $dz=5$ mm

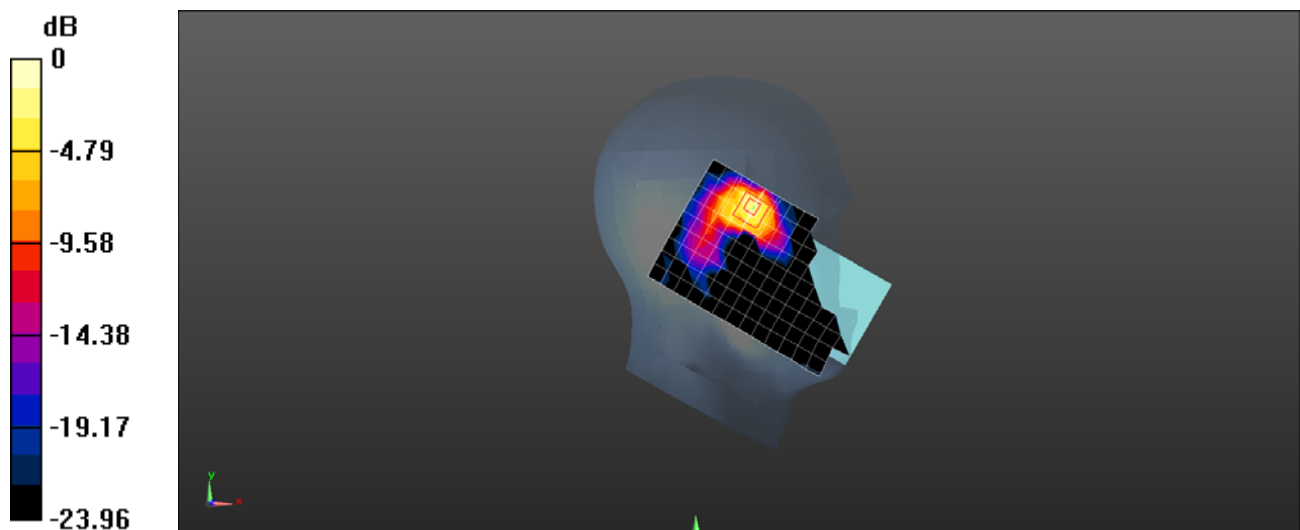
Reference Value = 5.472 V/m; Power Drift = -0.17 dB

Peak SAR (extrapolated) = 0.186 W/kg

SAR(1 g) = 0.080 W/kg; SAR(10 g) = 0.033 W/kg

[Info: Interpolated medium parameters used for SAR evaluation.](#)

Maximum value of SAR (measured) = 0.114 W/kg



0 dB = 0.114 W/kg = -9.43 dBW/kg