

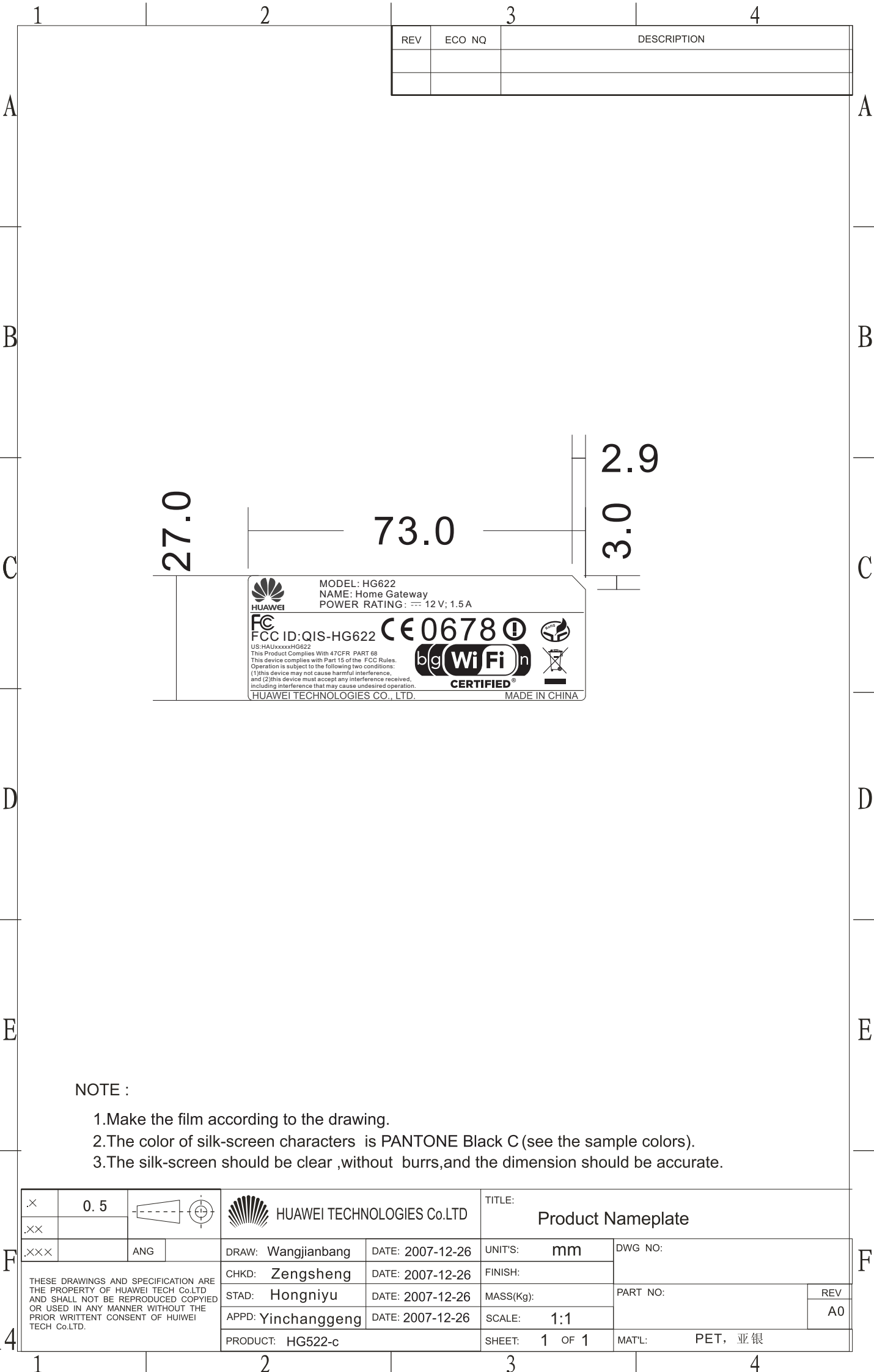


**FCC ID Label Location**

Please see the next page

RELEASE LEVEL: [REDACTED]

FILE NAME:



NOTE :

- 1.Make the film according to the drawing.
- 2.The color of silk-screen characters is PANTONE Black C (see the sample colors).
- 3.The silk-screen should be clear ,without burrs,and the dimension should be accurate.

×	0.5		HUAWEI TECHNOLOGIES Co.LTD		TITLE: Product Nameplate		
XX							
XXX		ANG	DRAW: Wangjianbang	DATE: 2007-12-26	UNIT'S: mm	DWG NO:	
THESE DRAWINGS AND SPECIFICATION ARE THE PROPERTY OF HUAWEI TECH Co.LTD AND SHALL NOT BE REPRODUCED COPYIED OR USED IN ANY MANNER WITHOUT THE PRIOR WRITTENT CONSENT OF HUIWEI TECH Co.LTD.			CHKD: Zengsheng	DATE: 2007-12-26	FINISH:		
			STAD: Hongniyu	DATE: 2007-12-26	MASS(Kg):		
			APPD: Yinchanggeng	DATE: 2007-12-26	SCALE: 1:1	PART NO:	REV A0
			PRODUCT: HG522-c		SHEET: 1 OF 1	MAT'L: PET, 亚银	