

Appendix D. SAR Test Setup Photos



Back Face, Test Separation 0 mm



Back Face, Test Separation 16 mm



Bottom Edge, Test Separation 0 mm



Bottom Edge, Test Separation 16 mm



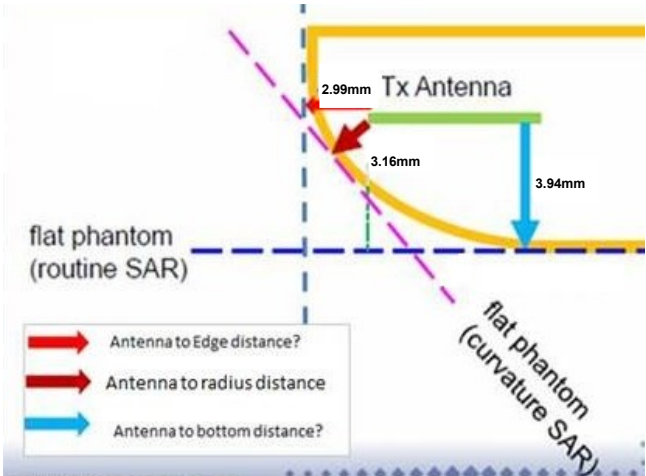
Right Edge, Test Separation 0 mm



Top Edge, Test Separation 0 mm

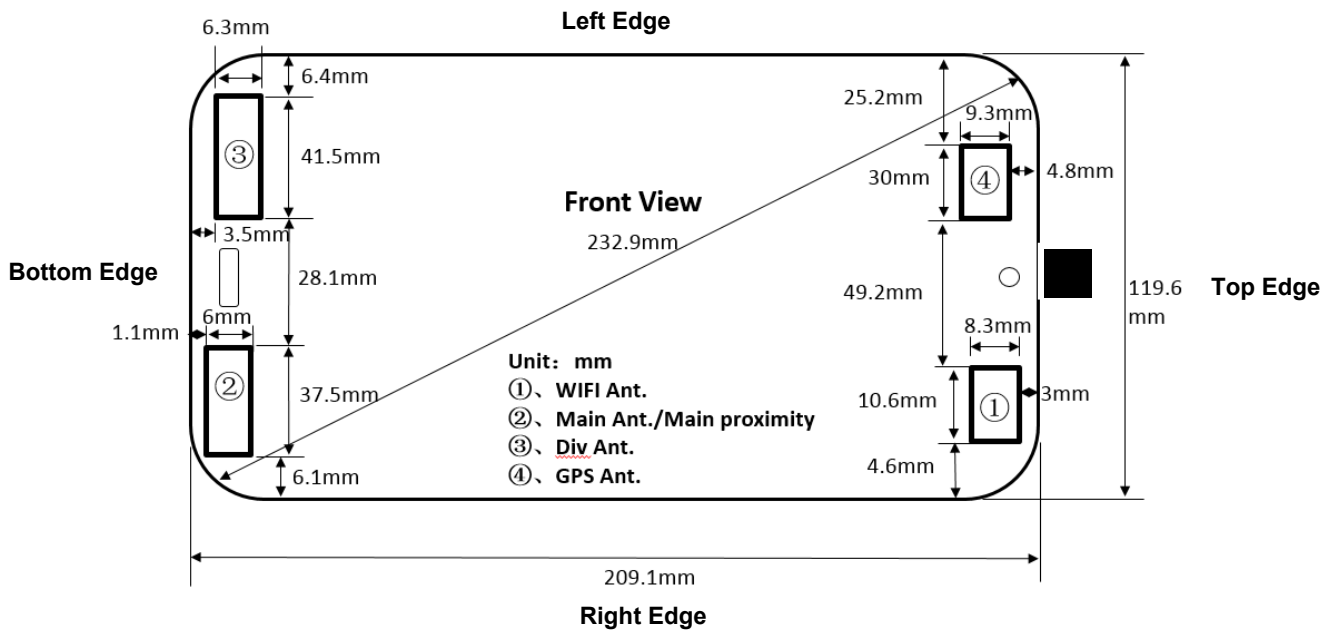


Curved Surface of Bottom Edge
Test Separation 0 mm

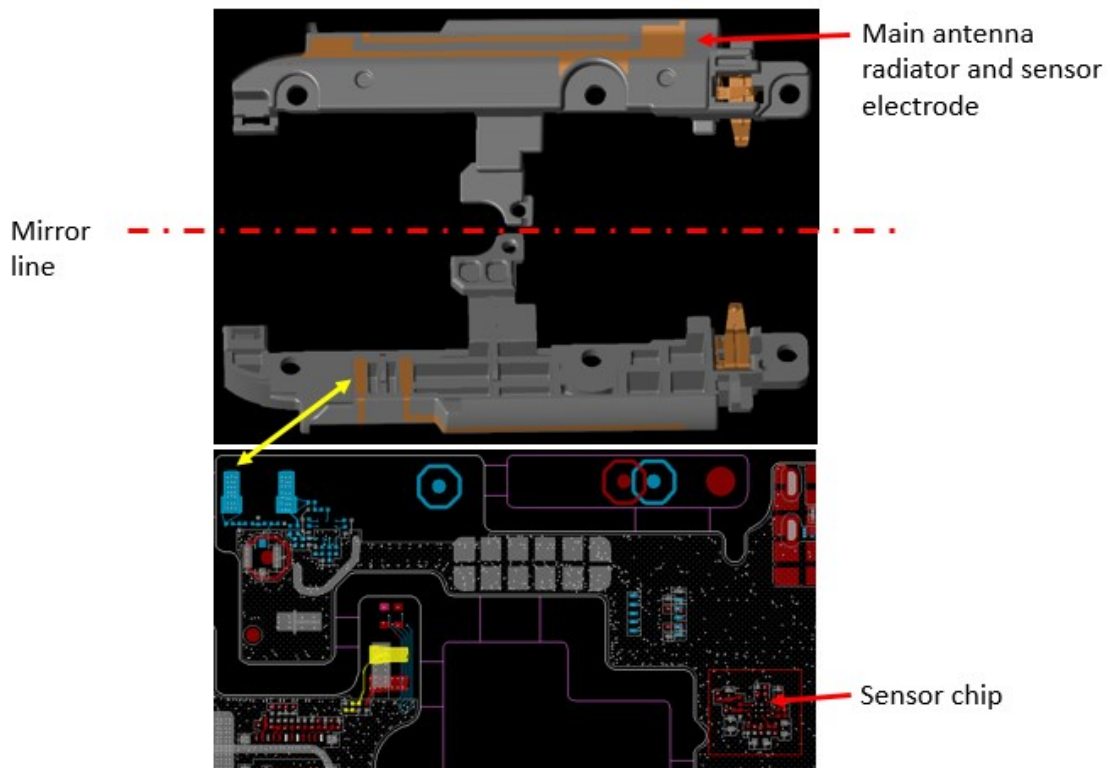


X=2.99mm, Y=3.94mm, Z=3.16mm
Exterior Radius Dimension For WLAN

Proximity Sensor Location and Clarification

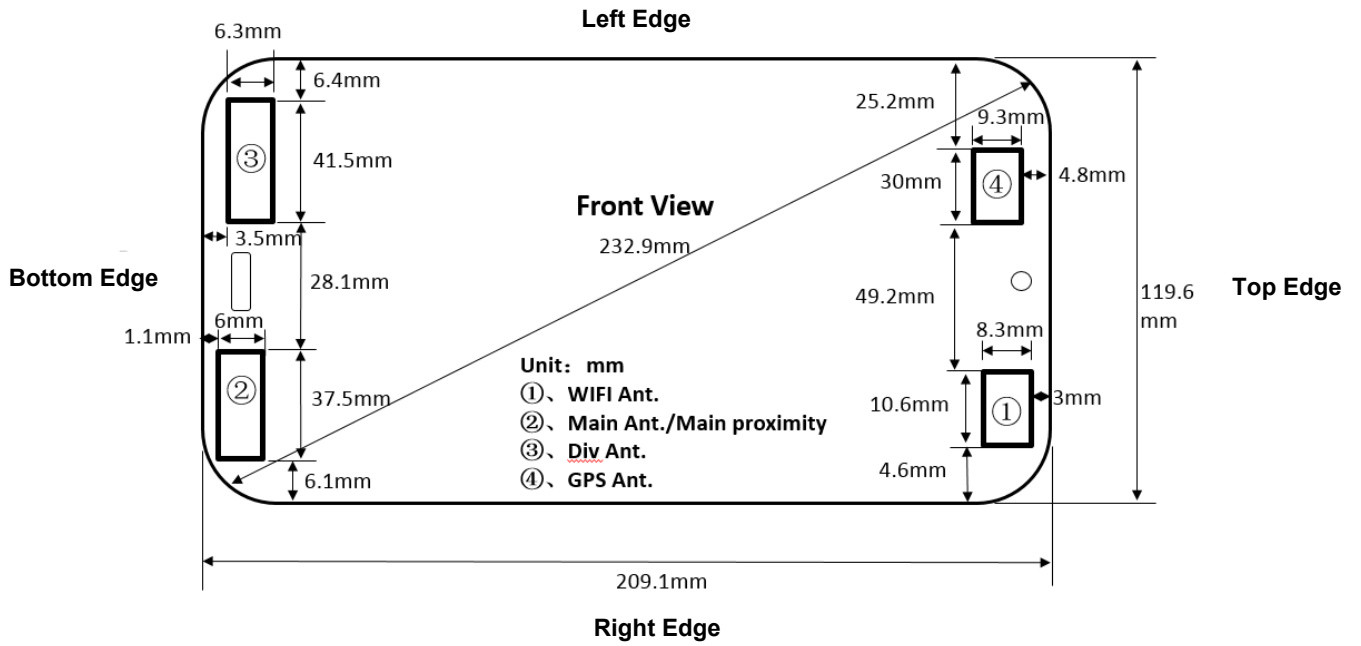


<Fig.5.1>



<Fig.5.2>

Antenna Location



<Fig.14.1>



<SAR test exclusion table>

General Note:

1. The below table, when the distance is < 50 mm exclusion threshold is "Ratio", when the distance is > 50 mm exclusion threshold is "mW".
2. Maximum power is the source-based time-average power and represents the maximum RF output power among production units.
3. Per KDB 447498 D01v06, for larger devices, the test separation distance of adjacent edge configuration is determined by the closest separation between the antenna and the user.
4. Per KDB 447498 D01v06, standalone SAR test exclusion threshold is applied; If the test separation distance is < 5mm, 5mm is used to determine SAR exclusion threshold.
5. Per KDB 447498 D01v06, the 1-g and 10-g SAR test exclusion thresholds for 100 MHz to 6 GHz at test separation distances ≤ 50 mm are determined by:
6. $[(\text{max. power of channel, including tune-up tolerance, mW}) / (\text{min. test separation distance, mm})] \cdot \sqrt{f(\text{GHz})} \leq 3.0$ for 1-g SAR and ≤ 7.5 for 10-g extremity SAR
 - f(GHz) is the RF channel transmit frequency in GHz
 - Power and distance are rounded to the nearest mW and mm before calculation
 - The result is rounded to one decimal place for comparison
7. Per KDB 447498 D01v06, at 100 MHz to 6 GHz and for test separation distances > 50 mm, the SAR test exclusion threshold is determined according to the following
 - a) [Threshold at 50 mm in step 1) + (test separation distance - 50 mm) · (f(MHz)/150)] mW, at 100 MHz to 1500 MHz
 - b) [Threshold at 50 mm in step 1) + (test separation distance - 50 mm) · 10] mW at > 1500 MHz and ≤ 6 GHz

	Wireless Interface	WCDMA Band V	LTE Band 5	Bluetooth	2.4GHz WLAN	5GHz WLAN
Exposure Position	Calculated Frequency	846MHz	848MHz	2480MHz	2462MHz	5825MHz
	Maximum power (dBm)	24	24	9.7	13	10
	Maximum rated power(mW)	251.0	251.0	9.0	20.0	10.0
	Separation distance(mm)	0		0		
Back Face	exclusion threshold	46.2	46.2	2.8	6.3	4.8
	Testing required?	Yes	Yes	No	Yes	Yes
	Separation distance(mm)	202		3.0		
Top Edge	exclusion threshold	1020.0	1022.0	2.8	6.3	4.8
	Testing required?	No	No	No	Yes	Yes
	Separation distance(mm)	6.1		4.6		
Right Edge	exclusion threshold	37.9	37.9	2.8	6.3	4.8
	Testing required?	Yes	Yes	No	Yes	Yes
	Separation distance(mm)	1.1		197.8		
Bottom Edge	exclusion threshold	46.2	46.2	1573.0	1574.0	1540.0
	Testing required?	Yes	Yes	No	No	No
	Separation distance(mm)	76.0		104.4		
Left Edge	exclusion threshold	310.0	310.0	639.0	640.0	606.0
	Testing required?	No	No	No	No	No