



SAR TEST REPORT

No. I17Z60534-SEM01

For

Huawei Technologies Co., Ltd.

LTE/WCDMA/GSM digital mobile phone

Modelname: H1711, H1711z

With

Hardware Version: HL3TRTM

Software Version: H1711C07B016

FCC ID: QISH1711

Issued Date: 2017-7-4



Note:

The test results in this test report relate only to the devices specified in this report. This report shall not be reproduced except in full without the written approval of CTTL.

Test Laboratory:

CTTL, Telecommunication Technology Labs, Academy of Telecommunication Research, MIIT
No. 51 Shouxiang Science Building, Xueyuan Road, Haidian District, Beijing, P. R. China 100191
Tel:+86(0)10-62304633-2512,Fax:+86(0)10-62304633-2504
Email: ctl_terminals@catr.cn, website:www.chinattl.com



REPORT HISTORY

Report Number	Revision	Issue Date	Description
I17Z60534-SEM01	Rev.0	2017-7-4	Initial creation of test report



TABLE OF CONTENT

1 TEST LABORATORY	5
1.1 TESTING LOCATION	5
1.2 TESTING ENVIRONMENT.....	5
1.3 PROJECT DATA	5
1.4 SIGNATURE.....	5
2 STATEMENT OF COMPLIANCE	6
3 CLIENT INFORMATION.....	8
3.1 APPLICANT INFORMATION	8
3.2 MANUFACTURER INFORMATION	8
4 EQUIPMENT UNDER TEST (EUT) AND ANCILLARY EQUIPMENT (AE)	9
4.1 ABOUT EUT	9
4.2 INTERNAL IDENTIFICATION OF EUT USED DURING THE TEST	9
4.3 INTERNAL IDENTIFICATION OF AE USED DURING THE TEST.....	10
5 TEST METHODOLOGY	10
5.1 APPLICABLE LIMIT REGULATIONS	10
5.2 APPLICABLE MEASUREMENT STANDARDS.....	10
6 SPECIFIC ABSORPTION RATE (SAR).....	11
6.1 INTRODUCTION.....	11
6.2 SAR DEFINITION.....	11
7 TISSUE SIMULATING LIQUIDS.....	12
7.1 TARGETS FOR TISSUE SIMULATING LIQUID	12
7.2 DIELECTRIC PERFORMANCE	13
8 SYSTEM VERIFICATION.....	21
8.1 SYSTEM SETUP.....	21
8.2 SYSTEM VERIFICATION.....	22
9 MEASUREMENT PROCEDURES	24
9.1 TESTS TO BE PERFORMED	24
9.2 GENERAL MEASUREMENT PROCEDURE.....	25
9.3 WCDMA MEASUREMENT PROCEDURES FOR SAR	27
9.4 SAR MEASUREMENT FOR LTE.....	28
9.5 BLUETOOTH & WI-FI MEASUREMENT PROCEDURES FOR SAR	28
9.6 POWER DRIFT.....	29
10 AREA SCAN BASED 1-G SAR	29
10.1 REQUIREMENT OF KDB.....	29
10.2 FAST SAR ALGORITHMS	29
11 CONDUCTED OUTPUT POWER.....	30

11.1 GSM MEASUREMENT RESULT	30
11.2 WCDMA MEASUREMENT RESULT.....	32
11.3 LTE MEASUREMENT RESULT	35
11.4 WI-FI AND BT MEASUREMENT RESULT	58
12 SIMULTANEOUS TX SAR CONSIDERATIONS	63
12.1 INTRODUCTION.....	63
12.2 TRANSMIT ANTENNA SEPARATION DISTANCES	63
12.3 SAR MEASUREMENT POSITIONS	63
12.4 STANDALONE SAR TEST EXCLUSION CONSIDERATIONS	64
13 EVALUATION OF SIMULTANEOUS.....	65
14 SAR TEST RESULT.....	66
14.1 SAR RESULTS FOR FAST SAR.....	68
14.2 SAR RESULTS FOR STANDARD PROCEDURE	82
14.3 WLAN EVALUATION	88
14.4 WLAN EVALUATION FOR 5G.....	92
15 SAR MEASUREMENT VARIABILITY.....	100
16 MEASUREMENT UNCERTAINTY	101
16.1 MEASUREMENT UNCERTAINTY FOR NORMAL SAR TESTS (300MHZ~3GHZ).....	101
16.2 MEASUREMENT UNCERTAINTY FOR NORMAL SAR TESTS (3~6GHZ)	102
16.3 MEASUREMENT UNCERTAINTY FOR FAST SAR TESTS (300MHZ~3GHZ)	103
16.4 MEASUREMENT UNCERTAINTY FOR FAST SAR TESTS (3~6GHZ).....	104
17 MAIN TEST INSTRUMENTS	105
ANNEX A GRAPH RESULTS.....	106
ANNEX B SYSTEM VERIFICATION RESULTS.....	178
ANNEX C SAR MEASUREMENT SETUP	197
ANNEX D POSITION OF THE WIRELESS DEVICE IN RELATION TO THE PHANTOM	203
ANNEX E EQUIVALENT MEDIA RECIPES	206
ANNEX F SYSTEM VALIDATION	207
ANNEX G PROBE CALIBRATION CERTIFICATE	208
ANNEX H DIPOLE CALIBRATION CERTIFICATE.....	219
ANNEX I SENSOR TRIGGERING DATA SUMMARY	288
ANNEX J ACCREDITATION CERTIFICATE.....	293

1 Test Laboratory

1.1 Testing Location

Company Name:	CTTL(Shouxiang)
Address:	No. 51 Shouxiang Science Building, Xueyuan Road, Haidian District, Beijing, P. R. China100191

1.2 Testing Environment

Temperature:	18°C~25°C,
Relative humidity:	30%~ 70%
Ground system resistance:	< 0.5 Ω
Ambient noise & Reflection:	< 0.012 W/kg

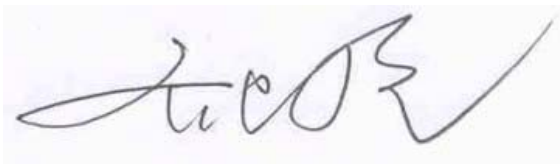
1.3 Project Data

Project Leader:	Qi Dianyuan
Test Engineer:	Lin Xiaojun
Testing Start Date:	June 2, 2017
Testing End Date:	June 8, 2017

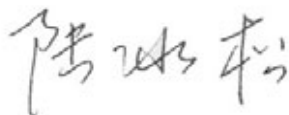
1.4 Signature



Lin Xiaojun
(Prepared this test report)



Qi Dianyuan
(Reviewed this test report)



Lu Bingsong
Deputy Director of the laboratory
(Approved this test report)

2 Statement of Compliance

The maximum results of SAR found during testing for Huawei Technologies Co., Ltd. LTE/WCDMA/GSM digital mobile phone H1711, H1711z are as follows:

Table 2.1: Highest Reported SAR (1g)

Exposure Configuration	Technology Band	Highest Reported SAR 1g(W/kg)	Equipment Class
Head (Separation Distance 0mm)	GSM 850	0.42	PCE
	PCS 1900	0.37	
	WCDMA850	0.22	
	WCDMA1700	0.51	
	WCDMA1900	0.56	
	LTE Band 2	0.75	
	LTE Band 4	0.32	
	LTE Band 5	0.33	
	LTE Band 12	0.33	
	LTE Band 30	0.14	
	WLAN 2.4 GHz	0.82	DTS
	WLAN 5 GHz	0.83	UNII
Hotspot (Separation Distance 10mm)	GSM 850	0.43	PCE
	PCS 1900	0.72	
	WCDMA850	0.49	
	WCDMA1700	0.73	
	WCDMA1900	0.59	
	LTE Band 2	0.70	
	LTE Band 4	0.69	
	LTE Band 5	0.39	
	LTE Band 12	0.28	
	LTE Band 30	0.69	
	WLAN 2.4 GHz	0.46	DTS
	WLAN 5 GHz	0.32	UNII
Body Worn (Separation Distance 15mm)	GSM 850	0.36	PCE
	PCS 1900	0.44	
	WCDMA850	0.31	
	WCDMA1700	1.28	
	WCDMA1900	0.52	
	LTE Band 2	0.41	
	LTE Band 4	1.01	
	LTE Band 5	0.20	
	LTE Band 12	0.25	
	LTE Band 30	0.48	
	WLAN 2.4 GHz	0.17	DTS
	WLAN 5 GHz	0.16	UNII

The SAR values found for the Mobile Phone are below the maximum recommended levels of 1.6 W/Kg as averaged over any 1g tissue according to the ANSI C95.1-1992.

For body worn operation, this device has been tested and meets FCC RF exposure guidelines when used with any accessory that contains no metal and which provides a minimum separation distance of 10 mm between this device and the body of the user. Use of other accessories may not ensure compliance with FCC RF exposure guidelines.

The EUT battery must be fully charged and checked periodically during the test to ascertain uniform power output.

The measurement together with the test system set-up is described in annex C of this test report. A detailed description of the equipment under test can be found in chapter 4 of this test report. The highest reported SAR value is obtained at the case of **(Table 2.1)**, and the values are: **1.28W/kg(1g)**.

Table 2.2: The sum of reported SAR values for main antenna and WiFi

	Position	Main antenna	WiFi	Sum
Highest reported SAR value for Head	Left hand, Cheek	0.75	0.83	1.58
Highest reported SAR value for Body 10mm	Front	0.72	0.46	1.18
	Bottom	0.73	/	0.73
Highest reported SAR value for Body 15mm	Front	1.28	0.17	1.45

Note: we have evaluated and chose the highest value of WiFi 2.4G and 5G in the above table

Table 2.3: The sum of reported SAR values for main antenna and BT

	Position	Main antenna	BT	Sum
Maximum reported SAR value for Head	Left hand, Cheek	0.75	0.33	1.08
Maximum reported SAR value for Body 10mm	Front	0.72	0.17	0.89
	Bottom	0.80	/	0.80
Maximum reported SAR value for Body 15mm	Front	1.28	0.04	1.32

[1] - Estimated SAR for Bluetooth (see the table 13.3)

According to the above tables, the highest sum of reported SAR values is **1.58 W/kg (1g)**. The detail for simultaneous transmission consideration is described in chapter 13.



3 Client Information

3.1 Applicant Information

Company Name:	Huawei Technologies Co., Ltd.
Address/Post:	Administration Building, Headquarters of Huawei Technologies Co., Ltd., Bantian, Longgang District, Shenzhen, 518129, P.R.C
Contact Person:	wangyinli
E-mail:	wangyinli1@huawei.com
Telephone:	18100974025

3.2 Manufacturer Information

Company Name:	Huawei Technologies Co., Ltd.
Address/Post:	Administration Building, Headquarters of Huawei Technologies Co., Ltd., Bantian, Longgang District, Shenzhen, 518129, P.R.C
Contact Person:	wangyinli
E-mail:	wangyinli1@huawei.com
Telephone:	18100974025

4 Equipment Under Test (EUT) and Ancillary Equipment (AE)

4.1 About EUT

Description:	LTE/WCDMA/GSM digital mobile phone
Model name:	H1711, H1711z
Operating mode(s):	GSM 850/900/1800/1900, UMTS FDD 2/4/5, BT, Wi-Fi LTE Band 2/4/5/12/30
Tested Tx Frequency:	825 – 848.8 MHz (GSM 850)
	1850.2 – 1910 MHz (GSM 1900)
	826.4–846.6 MHz (WCDMA 850 Band V)
	1712.4 – 1752.6 MHz (WCDMA 1700 Band IV)
	1852.4–1907.6 MHz (WCDMA1900 Band II)
	1850.7 – 1909.3 MHz (LTE Band 2)
	1710.7 – 1754.3 MHz (LTE Band 4)
	824.7 – 848.3 MHz (LTE Band 5)
	699.7 – 715.3 MHz (LTE Band 12)
	2307.5 – 2312.5 MHz (LTE Band 30)
	2412 – 2462 MHz (Wi-Fi 2.4G)
5150-5825 MHz (Wi-Fi 5G)	
Tested Rx Frequency:	869.2 – 891.8 MHz (GSM 850)
	1930.2 – 1989.8 MHz (GSM 1900)
	871.4 – 891.6 MHz (WCDMA850 Band V)
	2112.4 – 2152.6 MHz (WCDMA 1700 Band IV)
	1932.4 –1987.6 MHz (WCDMA1900 Band II)
	1930.7 – 1989.3 MHz (LTE Band 2)
	2110.7 – 2154.3 MHz (LTE Band 4)
	869.7 – 893.3 MHz (LTE Band 5)
	729.7 – 745.3 MHz (LTE Band 12)
	2352.5 – 2357.5 MHz (LTE Band 30)
	2412 – 2462 MHz (Wi-Fi 2.4G)
5150-5825 MHz (Wi-Fi 5G)	
GPRS/EGPRS Multislot Class:	12
Test device Production information:	Production unit
Device type:	Portable device
Antenna type:	Integrated antenna
Hotspot mode:	Support

4.2 Internal Identification of EUT used during the test

EUT ID*	IMEI	HW	SW Version
EUT1	864886030002189	HL3TRTM	H1711C07B016
EUT2	864886030005190	HL3TRTM	H1711C07B016
EUT3	864885030021264	HL3TRTM	H1711C07B016
EUT4	864885030021892	HL3TRTM	H1711C07B016
EUT5	864885030020985	HL3TRTM	H1711C07B016
EUT6	864885030038003	HL3TRTM	H1711C07B016
EUT7	864885030020456	HL3TRTM	H1711C07B016

*EUT ID: is used to identify the test sample in the lab internally.

Note: It is performed to test SAR with the EUT1&2&3&4&5 and conducted power with the EUT6&7.

4.3 Internal Identification of AE used during the test

AE ID*	Description	Model	SN	Manufacturer
AE1	Battery	HB406689ECW	/	Desay Battery Co., Ltd
AE2	Battery	HB406689ECW	/	Scud (Fujian) Electronics Co.,Ltd

*AE ID: is used to identify the test sample in the lab internally.

5 TEST METHODOLOGY

5.1 Applicable Limit Regulations

ANSI C95.1–1992:IEEE Standard for Safety Levels with Respect to Human Exposure to Radio Frequency Electromagnetic Fields, 3 kHz to 300 GHz.

It specifies the maximum exposure limit of **1.6 W/kg** as averaged over any 1 gram of tissue for portable devices being used within 20 cm of the user in the uncontrolled environment.

5.2 Applicable Measurement Standards

IEEE 1528–2013: Recommended Practice for Determining the Peak Spatial-Average Specific Absorption Rate (SAR) in the Human Head from Wireless Communications Devices: Measurement Techniques.

KDB447498 D01: General RF Exposure Guidance v06: Mobile and Portable Devices RF Exposure Procedures and Equipment Authorization Policies.

KDB648474 D04 Handset SAR v01r03: SAR Evaluation Considerations for Wireless Handsets.

KDB941225 D01 SAR test for 3G devices v03r01: SAR Measurement Procedures for 3G Devices

KDB941225 D05 SAR for LTE Devices v02r05: SAR Evaluation Considerations for LTE Devices

KDB941225 D06 Hotspot Mode SAR v02r01: SAR Evaluation Procedures for Portable Devices with Wireless Router Capabilities

KDB248227 D01 802.11 Wi-Fi SAR v02r02: SAR GUIDANCE FOR IEEE 802.11 (Wi-Fi) TRANSMITTERS

KDB865664 D01 SAR measurement 100 MHz to 6 GHz v01r04: SAR Measurement Requirements for 100 MHz to 6 GHz.

KDB865664 D02 RF Exposure Reporting v01r02: RF Exposure Compliance Reporting and Documentation Considerations

6 Specific Absorption Rate (SAR)

6.1 Introduction

SAR is related to the rate at which energy is absorbed per unit mass in an object exposed to a radio field. The SAR distribution in a biological body is complicated and is usually carried out by experimental techniques or numerical modeling. The standard recommends limits for two tiers of groups, occupational/controlled and general population/uncontrolled, based on a person's awareness and ability to exercise control over his or her exposure. In general, occupational/controlled exposure limits are higher than the limits for general population/uncontrolled.

6.2 SAR Definition

The SAR definition is the time derivative (rate) of the incremental energy (dW) absorbed by (dissipated in) an incremental mass (dm) contained in a volume element (dv) of a given density (ρ). The equation description is as below:

$$SAR = \frac{d}{dt} \left(\frac{dW}{dm} \right) = \frac{d}{dt} \left(\frac{dW}{\rho dv} \right)$$

SAR is expressed in units of Watts per kilogram (W/kg)

SAR measurement can be either related to the temperature elevation in tissue by

$$SAR = c \left(\frac{\delta T}{\delta t} \right)$$

Where: C is the specific heat capacity, δT is the temperature rise and δt is the exposure duration, or related to the electrical field in the tissue by

$$SAR = \frac{\sigma |E|^2}{\rho}$$

Where: σ is the conductivity of the tissue, ρ is the mass density of tissue and E is the RMS electrical field strength.

However for evaluating SAR of low power transmitter, electrical field measurement is typically applied.

7 Tissue Simulating Liquids

7.1 Targets for tissue simulating liquid

Table 7.1: Targets for tissue simulating liquid

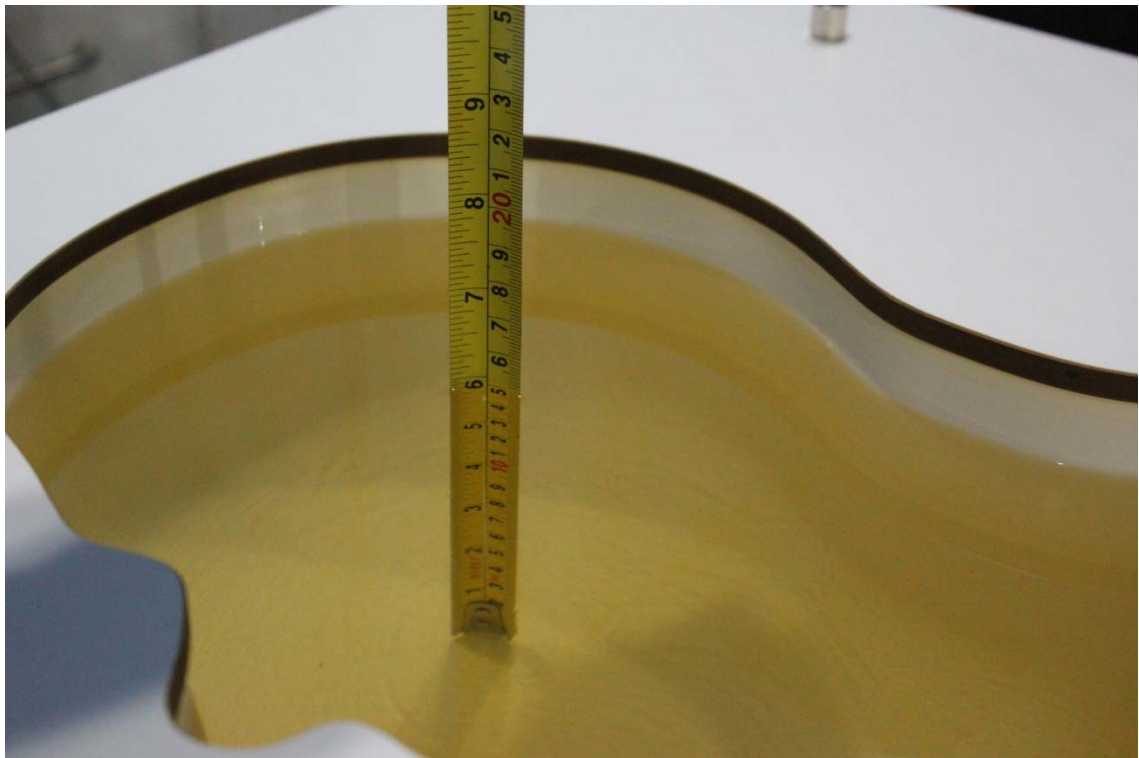
Frequency(MHz)	Liquid Type	Conductivity(σ)	$\pm 5\%$ Range	Permittivity(ϵ)	$\pm 5\%$ Range
750	Head	0.89	0.85~0.93	41.94	39.8~44.0
750	Body	0.96	0.91~1.01	55.5	52.7~58.3
835	Head	0.90	0.86~0.95	41.5	39.4~43.6
835	Body	0.97	0.92~1.02	55.2	52.4~58.0
1750	Head	1.37	1.30~1.44	40.08	38.1~42.1
1750	Body	1.49	1.42~1.56	53.4	50.7~56.1
1900	Head	1.40	1.33~1.47	40.0	38.0~42.0
1900	Body	1.52	1.44~1.60	53.3	50.6~56.0
2300	Head	1.67	1.59~1.75	39.47	37.5~41.4
2300	Body	1.85	1.76~1.94	52.8	50.2~55.4
2450	Head	1.80	1.71~1.89	39.2	37.2~41.2
2450	Body	1.95	1.85~2.05	52.7	50.1~55.3
2600	Head	1.96	1.86~2.06	39.01	37.1~41.0
2600	Body	2.16	2.05~2.27	52.5	49.9~55.1
5250	Head	4.71	4.47~4.95	35.93	34.1~37.7
5250	Body	5.36	5.09~5.63	48.9	46.5~51.3
5600	Head	5.07	4.82~5.32	35.53	33.8~37.3
5600	Body	5.77	5.48~6.06	48.5	46.1~50.9
5750	Head	5.22	4.96~5.48	35.36	33.6~37.1
5750	Body	5.94	5.64~6.24	48.3	45.9~50.7

7.2 Dielectric Performance

Table 7.2: Dielectric Performance of Tissue Simulating Liquid

Measurement Date (yyyy-mm-dd)	Type	Frequency	Permittivity ϵ	Drift (%)	Conductivity σ (S/m)	Drift (%)
2017/6/2	Head	750 MHz	41.71	-0.55	0.88	-1.12
	Body	750 MHz	56.33	1.50	0.963	0.31
2017/6/3	Head	835 MHz	41.55	0.12	0.884	-1.78
	Body	835 MHz	55.33	0.24	0.978	0.82
2017/6/4	Head	1750 MHz	39.85	-0.57	1.383	0.95
	Body	1750 MHz	53.26	-0.26	1.477	-0.87
2017/6/5	Head	1900 MHz	40.09	0.23	1.401	0.07
	Body	1900 MHz	54.17	1.63	1.548	1.84
2017/6/6	Head	2300 MHz	39.01	-1.17	1.628	-2.51
	Body	2300 MHz	52.37	-0.81	1.803	-2.54
2017/6/7	Head	2450 MHz	39.22	0.05	1.813	0.72
	Body	2450 MHz	52.62	-0.15	1.95	0.00
2017/6/9	Head	5250 MHz	38.57	-1.13	1.946	-0.71
	Body	5250 MHz	52.39	-0.21	2.183	1.06
	Head	5600 MHz	35.79	-0.39	4.668	-0.89
	Body	5600 MHz	49.51	1.25	5.404	0.82
	Head	5750 MHz	36.04	1.44	5.085	0.30
	Body	5750 MHz	47.68	-1.69	5.711	-1.02

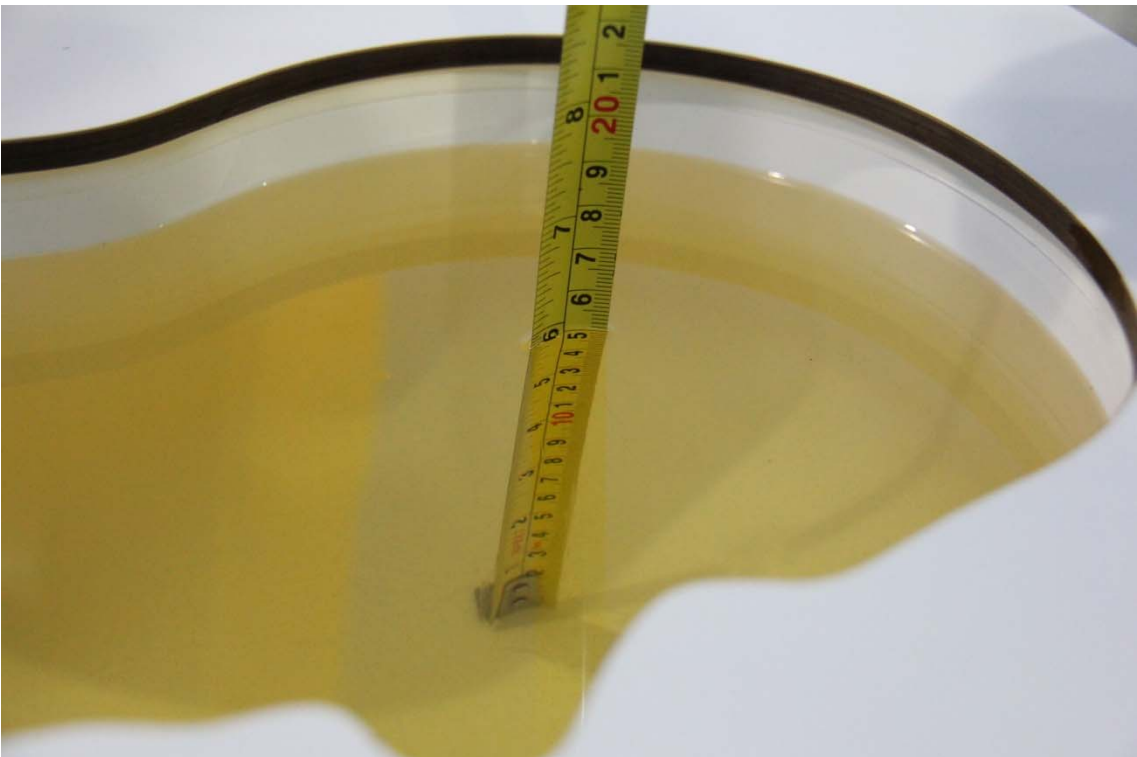
Note: The liquid temperature is 22.5°C



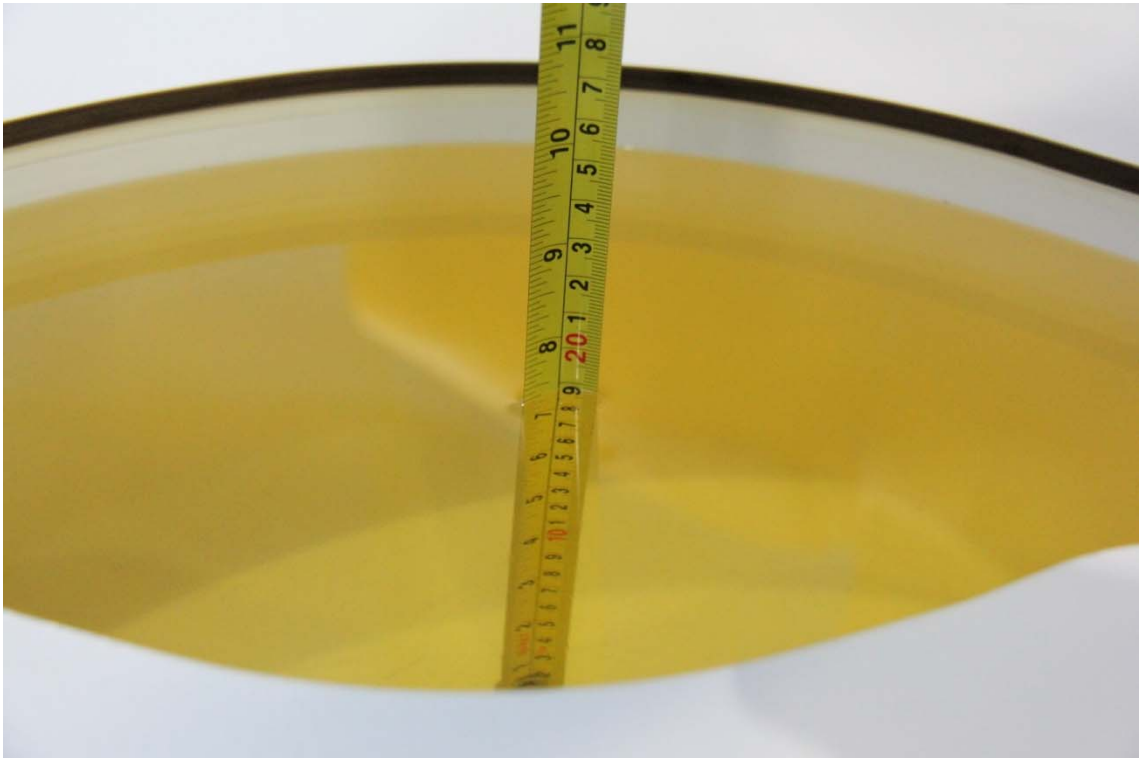
Picture 7-1 Liquid depth in the Head Phantom (750MHz)



Picture 7-2 Liquid depth in the Flat Phantom (750MHz)



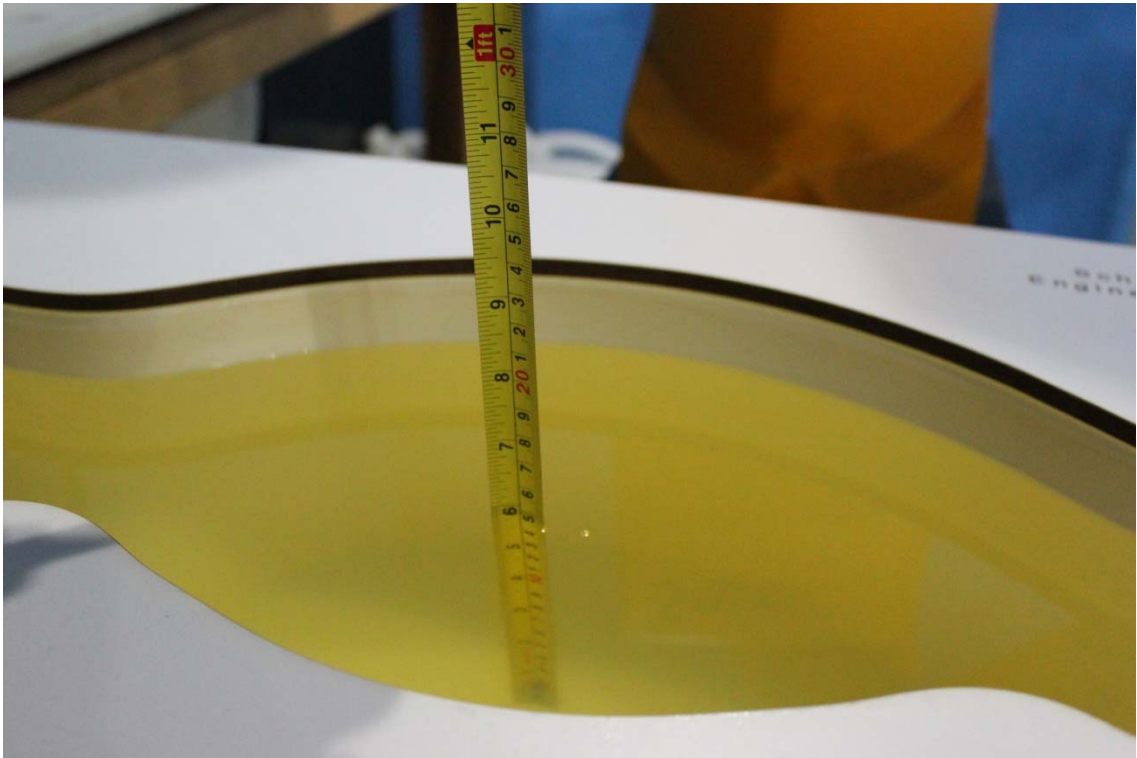
Picture 7-3 Liquid depth in the Head Phantom (835 MHz)



Picture 7-4 Liquid depth in the Flat Phantom (835 MHz)



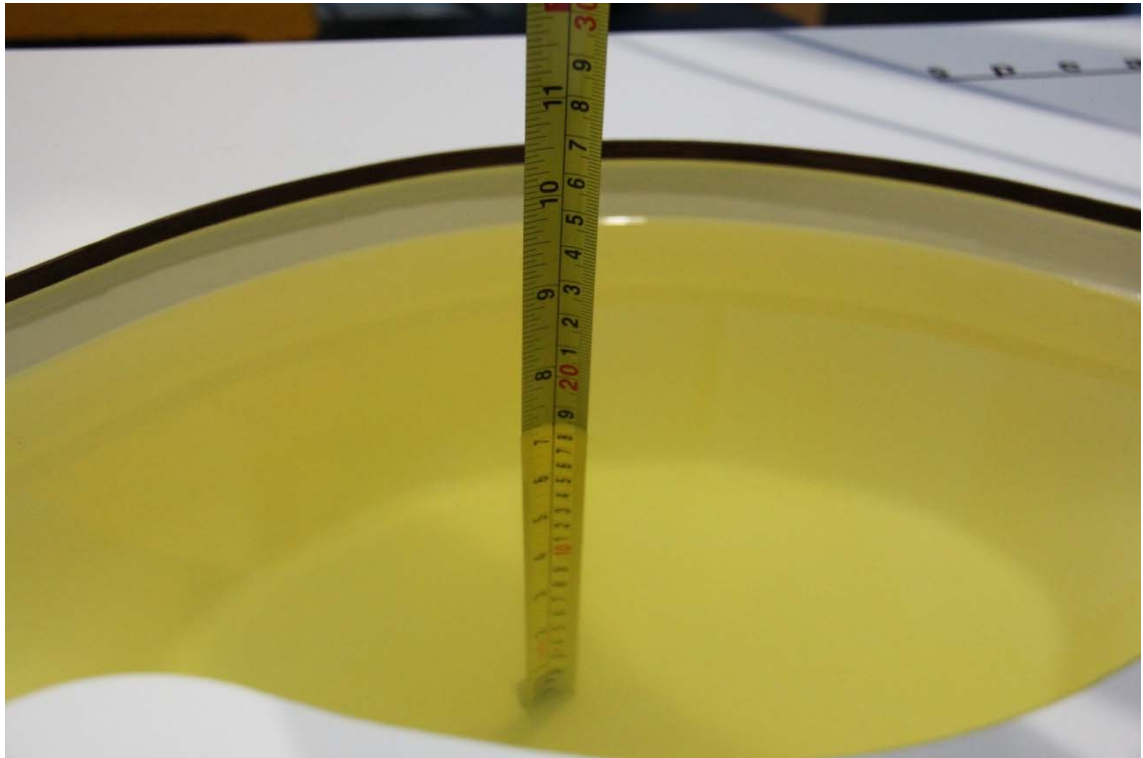
Picture 7-5 Liquid depth in the Head Phantom (1750 MHz)



Picture 7-6 Liquid depth in the Flat Phantom (1750MHz)



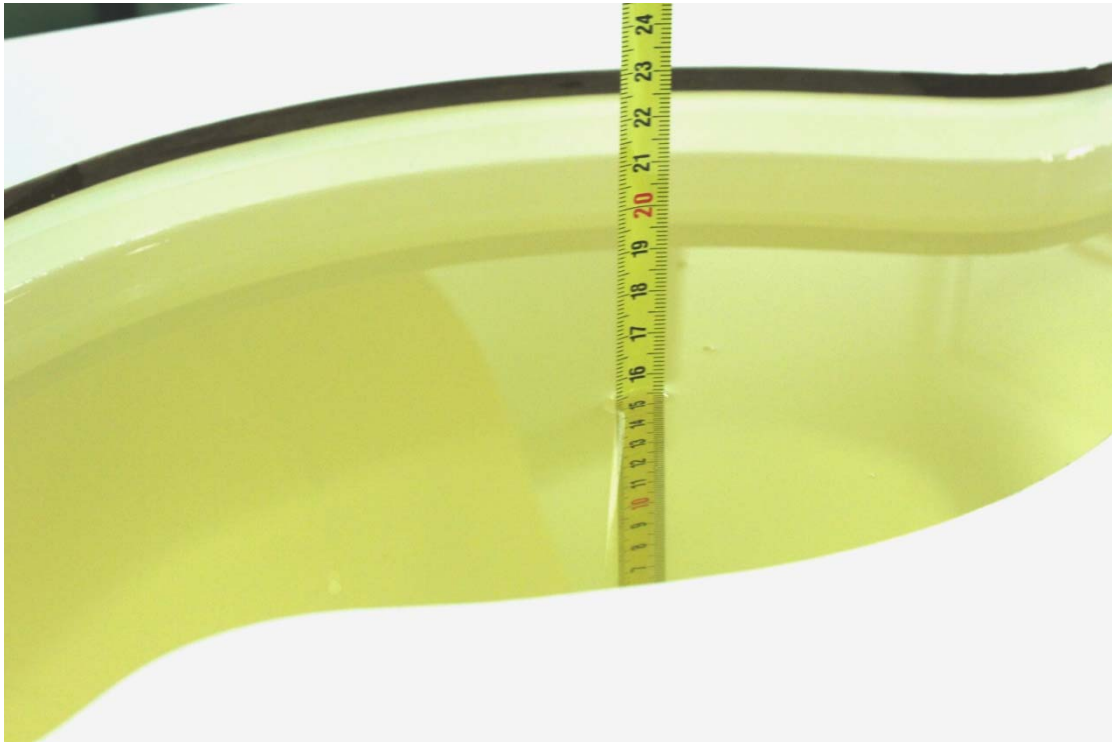
Picture 7-7 Liquid depth in the Head Phantom (1900 MHz)



Picture 7-8 Liquid depth in the Flat Phantom (1900MHz)



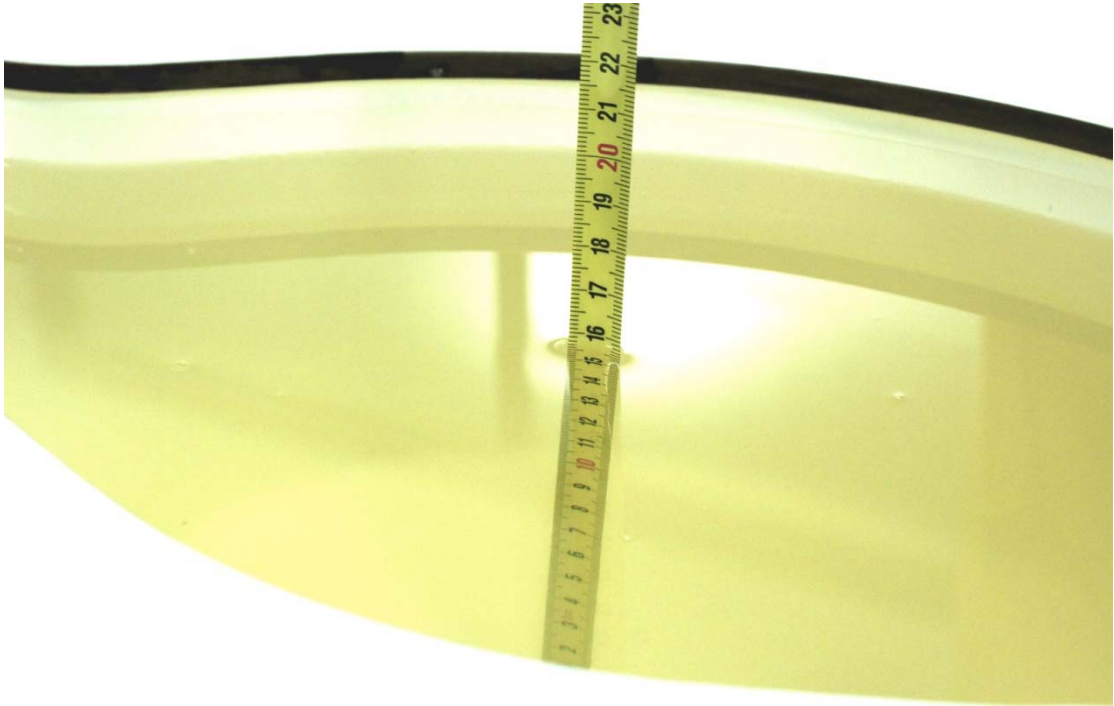
Picture 7-9 Liquid depth in the Head Phantom (2450MHz)



Picture 7-10 Liquid depth in the Flat Phantom (2450MHz)



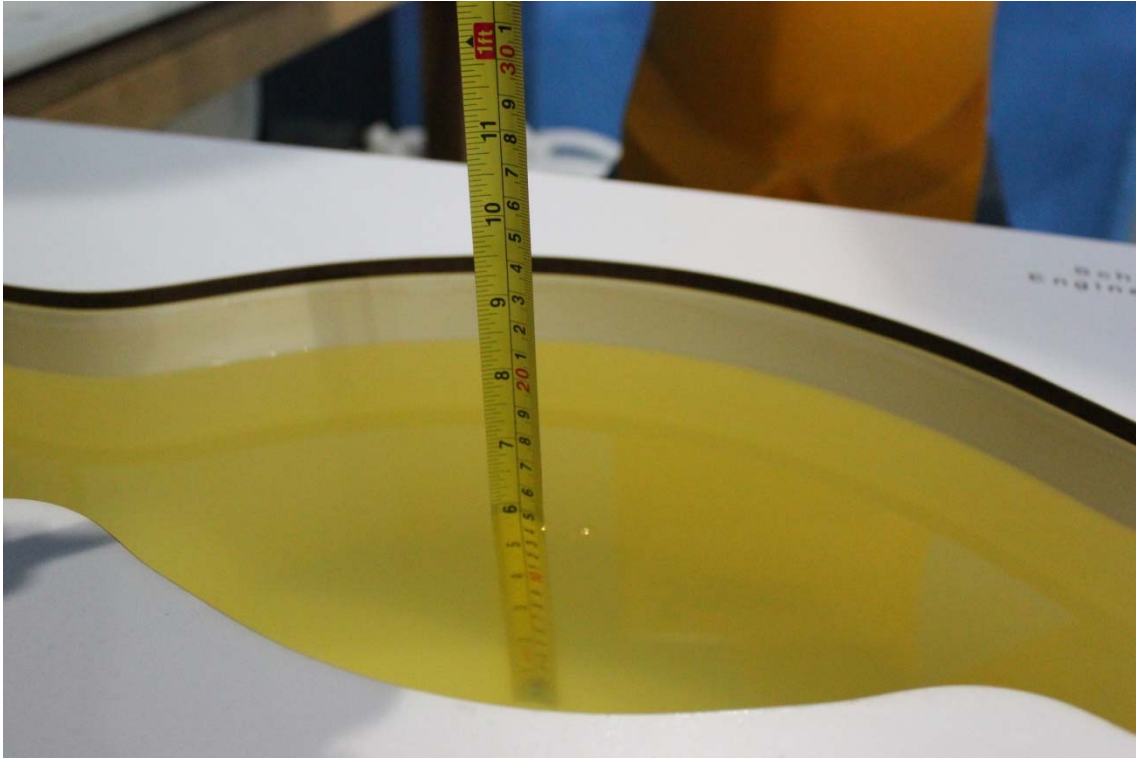
Picture 7-11 Liquid depth in the Head Phantom (2600 MHz Head)



Picture 7-12 Liquid depth in the Flat Phantom (2600MHz)



Picture 7-13 Liquid depth in the Head Phantom (2300 MHz)



Picture 7-14 Liquid depth in the Flat Phantom (2300MHz)



Picture 7-15 Liquid depth in the Head Phantom (5GHz)

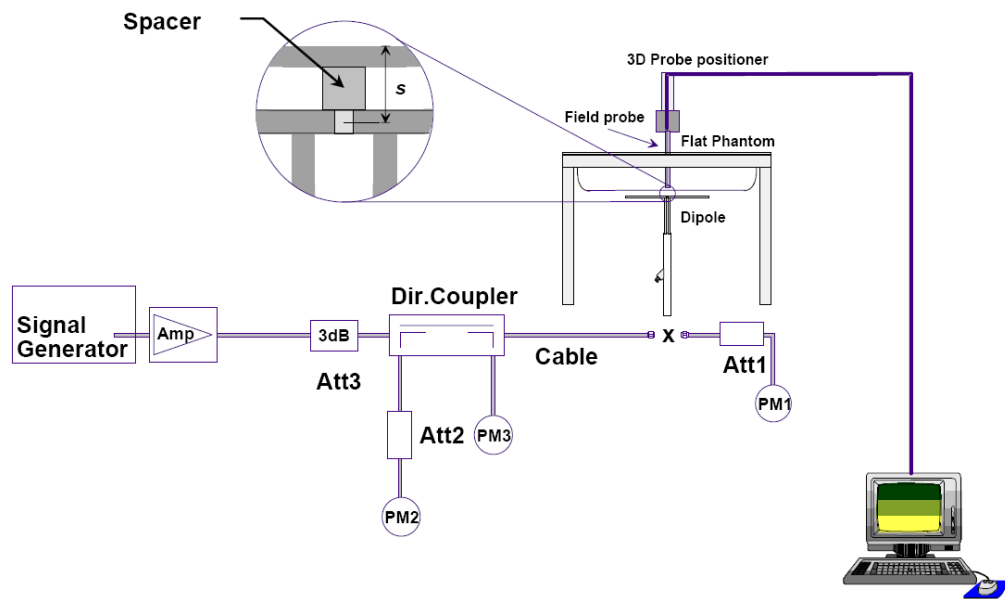


Picture 7-16 Liquid depth in the Flat Phantom (5GHz)

8 System verification

8.1 System Setup

In the simplified setup for system evaluation, the DUT is replaced by a calibrated dipole and the power source is replaced by a continuous wave that comes from a signal generator. The calibrated dipole must be placed beneath the flat phantom section of the SAM twin phantom with the correct distance holder. The distance holder should touch the phantom surface with a light pressure at the reference marking and be oriented parallel to the long side of the phantom. The equipment setup is shown below:



Picture 8.1 System Setup for System Evaluation



Picture 8.2 Photo of Dipole Setup

8.2 System Verification

SAR system verification is required to confirm measurement accuracy, according to the tissue dielectric media, probe calibration points and other system operating parameters required for measuring the SAR of a test device. The system verification must be performed for each frequency band and within the valid range of each probe calibration point required for testing the device.

The system verification results are required that the area scan estimated 1-g SAR is within 3% of the zoom scan 1-g SAR. The details are presented in annex B.

Table 8.1: System Verification of Head

Measurement Date (yyyy-mm-dd)	Frequency	Target value (W/kg)		Measured value(W/kg)		Deviation	
		10 g Average	1 g Average	10 g Average	1 g Average	10 g Average	1 g Average
2017/6/2	750 MHz	5.46	8.33	5.52	8.2	1.10%	-1.56%
2017/6/3	835 MHz	6.18	9.44	6.16	9.24	-0.32%	-2.12%
2017/6/4	1750 MHz	19.5	36.8	19.28	36.8	-1.13%	0.00%
2017/6/5	1900 MHz	21.2	40.7	21.2	41.16	0.00%	1.13%
2017/6/6	2300 MHz	23.8	49.8	23.6	48.8	-0.67%	-2.01%
2017/6/7	2450 MHz	24.6	52.8	24.76	51.96	0.65%	-1.59%
2017/6/9	5250 MHz	22.5	78.6	22.9	80.0	1.69%	1.83%
	5600 MHz	23.4	81.8	23.6	83.1	0.68%	1.56%
	5750 MHz	22.7	79.8	22.2	81.4	-2.03%	1.95%

Table 8.2: System Verification of Body

Measurement Date (yyyy-mm-dd)	Frequency	Target value (W/kg)		Measured value (W/kg)		Deviation	
		10 g Average	1 g Average	10 g Average	1 g Average	10 g Average	1 g Average
2017/6/2	750 MHz	5.76	8.78	5.72	8.64	-0.69%	-1.59%
2017/6/3	835 MHz	6.36	9.69	6.32	9.68	-0.63%	-0.10%
2017/6/4	1750 MHz	19.6	37	19.52	37.68	-0.41%	1.84%
2017/6/5	1900 MHz	21.3	40.1	21.52	39.36	1.03%	-1.85%
2017/6/6	2300 MHz	23.3	48.1	23.44	48.80	0.60%	1.46%
2017/6/7	2450 MHz	24.1	51.2	24.44	50.76	1.41%	-0.86%
2017/6/9	5250 MHz	21.2	75.6	20.9	74.8	-1.51%	-1.01%
	5600 MHz	22.1	79.1	22.4	77.9	1.54%	-1.54%
	5750 MHz	20.8	74.5	20.7	74.4	-0.38%	-0.13%

9 Measurement Procedures

9.1 Tests to be performed

In order to determine the highest value of the peak spatial-average SAR of a handset, all device positions, configurations and operational modes shall be tested for each frequency band according to steps 1 to 3 below. A flowchart of the test process is shown in picture 9.1.

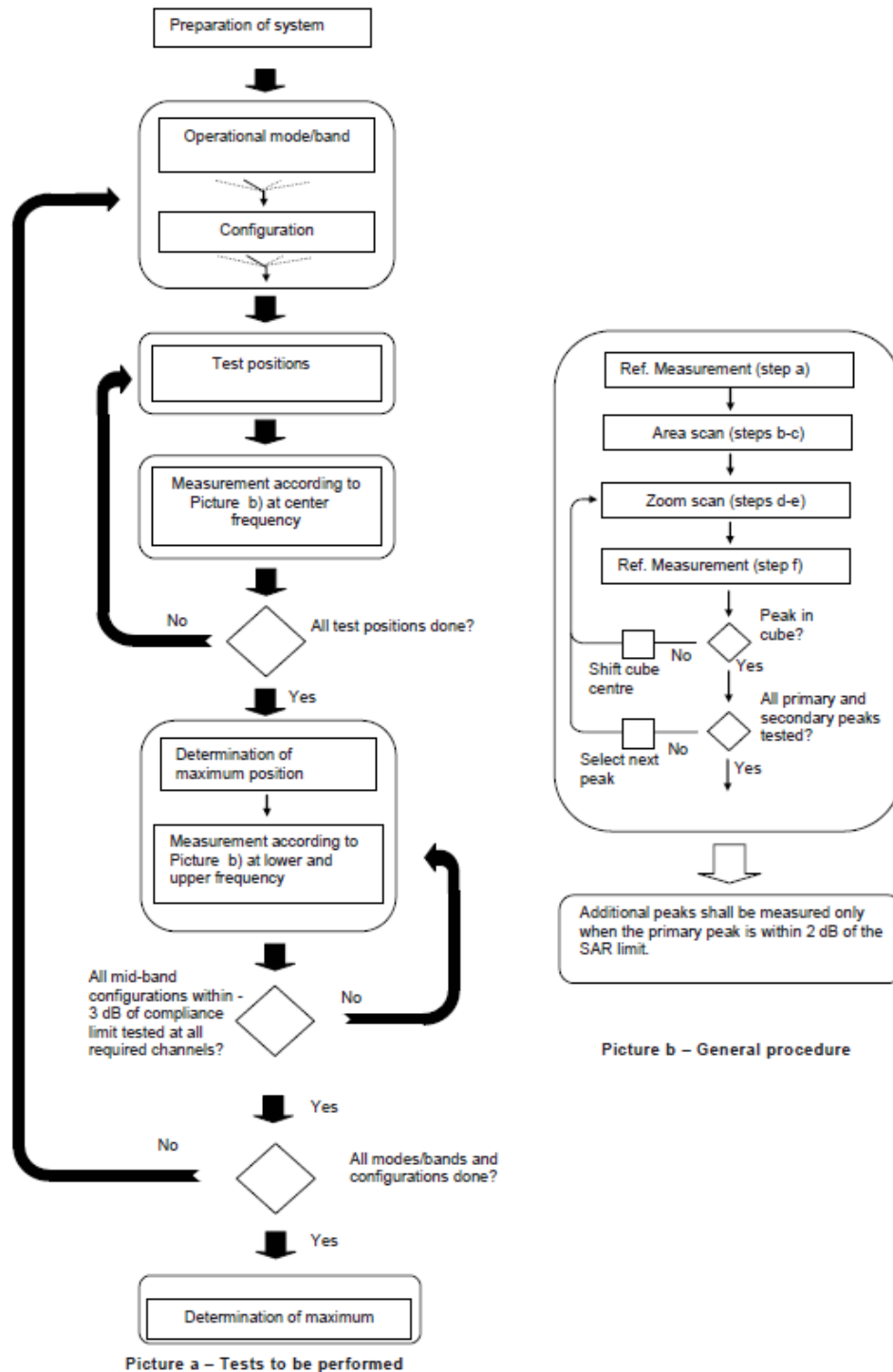
Step 1: The tests described in 9.2 shall be performed at the channel that is closest to the centre of the transmit frequency band (f_c) for:

- a) all device positions (cheek and tilt, for both left and right sides of the SAM phantom, as described in annex D),
- b) all configurations for each device position in a), e.g., antenna extended and retracted, and
- c) all operational modes, e.g., analogue and digital, for each device position in a) and configuration in b) in each frequency band.

If more than three frequencies need to be tested according to 11.1 (i.e., $N_c > 3$), then all frequencies, configurations and modes shall be tested for all of the above test conditions.

Step 2: For the condition providing highest peak spatial-average SAR determined in Step 1, perform all tests described in 9.2 at all other test frequencies, i.e., lowest and highest frequencies. In addition, for all other conditions (device position, configuration and operational mode) where the peak spatial-average SAR value determined in Step 1 is within 3 dB of the applicable SAR limit, it is recommended that all other test frequencies shall be tested as well.

Step 3: Examine all data to determine the highest value of the peak spatial-average SAR found in Steps 1 to 2.



Picture 9.1Block diagram of the tests to be performed

9.2 General Measurement Procedure

The area and zoom scan resolutions specified in the table below must be applied to the SAR measurements and fully documented in SAR reports to qualify for TCB approval. Probe boundary effect error compensation is required for measurements with the probe tip closer than half a probe tip diameter to the phantom surface. Both the probe tip diameter and sensor offset distance must satisfy measurement protocols; to ensure probe boundary effect errors are minimized and the

higher fields closest to the phantom surface can be correctly measured and extrapolated to the phantom surface for computing 1-g SAR. Tolerances of the post-processing algorithms must be verified by the test laboratory for the scan resolutions used in the SAR measurements, according to the reference distribution functions specified in IEEE Std 1528-2003. The results should be documented as part of the system validation records and may be requested to support test results when all the measurement parameters in the following table are not satisfied.

		≤ 3 GHz	> 3 GHz	
Maximum distance from closest measurement point (geometric center of probe sensors) to phantom surface		5 ± 1 mm	$\frac{1}{2} \cdot \delta \cdot \ln(2) \pm 0.5$ mm	
Maximum probe angle from probe axis to phantom surface normal at the measurement location		$30^\circ \pm 1^\circ$	$20^\circ \pm 1^\circ$	
Maximum area scan spatial resolution: Δx_{Area} , Δy_{Area}		≤ 2 GHz: ≤ 15 mm 2 – 3 GHz: ≤ 12 mm	3 – 4 GHz: ≤ 12 mm 4 – 6 GHz: ≤ 10 mm	
		When the x or y dimension of the test device, in the measurement plane orientation, is smaller than the above, the measurement resolution must be \leq the corresponding x or y dimension of the test device with at least one measurement point on the test device.		
Maximum zoom scan spatial resolution: Δx_{Zoom} , Δy_{Zoom}		≤ 2 GHz: ≤ 8 mm 2 – 3 GHz: ≤ 5 mm*	3 – 4 GHz: ≤ 5 mm* 4 – 6 GHz: ≤ 4 mm*	
Maximum zoom scan spatial resolution, normal to phantom surface	uniform grid: $\Delta z_{Zoom}(n)$	≤ 5 mm	3 – 4 GHz: ≤ 4 mm 4 – 5 GHz: ≤ 3 mm 5 – 6 GHz: ≤ 2 mm	
	graded grid	$\Delta z_{Zoom}(1)$: between 1 st two points closest to phantom surface	≤ 4 mm	3 – 4 GHz: ≤ 3 mm 4 – 5 GHz: ≤ 2.5 mm 5 – 6 GHz: ≤ 2 mm
		$\Delta z_{Zoom}(n>1)$: between subsequent points	$\leq 1.5 \cdot \Delta z_{Zoom}(n-1)$	
Minimum zoom scan volume	x, y, z	≥ 30 mm	3 – 4 GHz: ≥ 28 mm 4 – 5 GHz: ≥ 25 mm 5 – 6 GHz: ≥ 22 mm	
<p>Note: δ is the penetration depth of a plane-wave at normal incidence to the tissue medium; see draft standard IEEE P1528-2011 for details.</p> <p>* When zoom scan is required and the <i>reported</i> SAR from the area scan based 1-g SAR estimation procedures of KDB 447498 is ≤ 1.4 W/kg, ≤ 8 mm, ≤ 7 mm and ≤ 5 mm zoom scan resolution may be applied, respectively, for 2 GHz to 3 GHz, 3 GHz to 4 GHz and 4 GHz to 6 GHz.</p>				

9.3 WCDMA Measurement Procedures for SAR

The following procedures are applicable to WCDMA handsets operating under 3GPP Release99, Release 5 and Release 6. The default test configuration is to measure SAR with an established radio link between the DUT and a communication test set using a 12.2kbps RMC (reference measurement channel) configured in Test Loop Mode 1. SAR is selectively confirmed for other physical channel configurations (DPCCH & DPDCH_n), HSDPA and HSPA (HSUPA/HSDPA) modes according to output power, exposure conditions and device operating capabilities. Both uplink and downlink should be configured with the same RMC or AMR, when required. SAR for Release 5 HSDPA and Release 6 HSPA are measured using the applicable FRC (fixed reference channel) and E-DCH reference channel configurations. Maximum output power is verified according to applicable versions of 3GPP TS 34.121 and SAR must be measured according to these maximum output conditions. When Maximum Power Reduction (MPR) is not implemented according to Cubic Metric (CM) requirements for Release 6 HSPA, the following procedures do not apply.

For Release 5 HSDPA Data Devices:

Sub-test	β_c	β_d	β_d (SF)	β_c / β_d	β_{hs}	CM/dB
1	2/15	15/15	64	2/15	4/15	0.0
2	12/15	15/15	64	12/15	24/25	1.0
3	15/15	8/15	64	15/8	30/15	1.5
4	15/15	4/15	64	15/4	30/15	1.5

For Release 6 HSPA Data Devices

Sub-test	β_c	β_d	β_d (SF)	β_c / β_d	β_{hs}	β_{ec}	β_{ed}	β_{ed} (SF)	β_{ed} (codes)	CM (dB)	MPR (dB)	AG Index	E-TFCI
1	11/15	15/15	64	11/15	22/15	209/225	1039/225	4	1	1.5	1.5	20	75
2	6/15	15/15	64	6/15	12/15	12/15	12/15	4	1	1.5	1.5	12	67
3	15/15	9/15	64	15/9	30/15	30/15	$\beta_{ed1}:47/15$ $\beta_{ed2}:47/15$	4	2	1.5	1.5	15	92
4	2/15	15/15	64	2/15	4/15	4/15	56/75	4	1	1.5	1.5	17	71
5	15/15	15/15	64	15/15	24/15	30/15	134/15	4	1	1.5	1.5	21	81

Rel.8 DC-HSDPA (Cat 24)

SAR test exclusion for Rel.8 DC-HSDPA must satisfy the SAR test exclusion requirements of Rel.5 HSDPA. SAR test exclusion for DC-HSDPA devices is determined by power measurements according to the H-Set 12, Fixed Reference Channel (FRC) configuration in Table C.8.1.12 of 3GPP TS 34.121-1. A primary and a secondary serving HS-DSCH Cell are required to perform the power measurement and for the results to qualify for SAR test exclusion.

9.4 SAR Measurement for LTE

SAR tests for LTE are performed with a base station simulator, Rohde & Schwarz CMW500. Closed loop power control was used so the UE transmits with maximum output power during SAR testing. All powers were measured with the CMW 500.

It is performed for conducted power and SAR based on the KDB941225 D05.

SAR is evaluated separately according to the following procedures for the different test positions in each exposure condition – head, body, body-worn accessories and other use conditions. The procedures in the following subsections are applied separately to test each LTE frequency band.

1) QPSK with 1 RB allocation

Start with the largest channel bandwidth and measure SAR for QPSK with 1 RB allocation, using the RB offset and required test channel combination with the highest maximum output power among RB offsets at the upper edge, middle and lower edge of each required test channel. When the reported SAR is ≤ 0.8 W/kg, testing of the remaining RB offset configurations and required test channels is not required for 1 RB allocation; otherwise, SAR is required for the remaining required test channels and only for the RB offset configuration with the highest output power for that channel. When the reported SAR of a required test channel is > 1.45 W/kg, SAR is required for all three RB offset configurations for that required test channel.

2) QPSK with 50% RB allocation

The procedures required for 1 RB allocation in 1) are applied to measure the SAR for QPSK with 50% RB allocation.

3) QPSK with 100% RB allocation

For QPSK with 100% RB allocation, SAR is not required when the highest maximum output power for 100 % RB allocation is less than the highest maximum output power in 50% and 1 RB allocations and the highest reported SAR for 1 RB and 50% RB allocation in 1) and 2) are ≤ 0.8 W/kg. Otherwise, SAR is measured for the highest output power channel; and if the reported SAR is > 1.45 W/kg, the remaining required test channels must also be tested.

9.5 Bluetooth & Wi-Fi Measurement Procedures for SAR

Normal network operating configurations are not suitable for measuring the SAR of 802.11 transmitters in general. Unpredictable fluctuations in network traffic and antenna diversity conditions can introduce undesirable variations in SAR results. The SAR for these devices should be measured using chipset based test mode software to ensure that the results are consistent and reliable.

Chipset based test mode software is hardware dependent and generally varies among manufacturers. The device operating parameters established in a test mode for SAR measurements must be identical to those programmed in production units, including output power levels, amplifier gain settings and other RF performance tuning parameters. The test frequencies should correspond to actual channel frequencies defined for domestic use. SAR for devices with switched diversity should be measured with only one antenna transmitting at a time during each SAR measurement, according to a fixed modulation and data rate. The same data pattern should be used for all measurements.

9.6 Power Drift

To control the output power stability during the SAR test, DASY4 system calculates the power drift by measuring the E-field at the same location at the beginning and at the end of the measurement for each test position. These drift values can be found in section 14 labeled as: (Power Drift [dB]). This ensures that the power drift during one measurement is within 5%.

10 Area Scan Based 1-g SAR

10.1 Requirement of KDB

According to the KDB447498 D01 v05, when the implementation is based on the specific polynomial fit algorithm as presented at the 29th Bioelectromagnetics Society meeting (2007) and the estimated 1-g SAR is ≤ 1.2 W/kg, a zoom scan measurement is not required provided it is also not needed for any other purpose; for example, if the peak SAR location required for simultaneous transmission SAR test exclusion can be determined accurately by the SAR system or manually to discriminate between distinctive peaks and scattered noisy SAR distributions from area scans.

There must not be any warning or alert messages due to various measurement concerns identified by the SAR system; for example, noise in measurements, peaks too close to scan boundary, peaks are too sharp, spatial resolution and uncertainty issues etc. The SAR system verification must also demonstrate that the area scan estimated 1-g SAR is within 3% of the zoom scan 1-g SAR (See Annex B). When all the SAR results for each exposure condition in a frequency band and wireless mode are based on estimated 1-g SAR, the 1-g SAR for the highest SAR configuration must be determined by a zoom scan.

10.2 Fast SAR Algorithms

The approach is based on the area scan measurement applying a frequency dependent attenuation parameter. This attenuation parameter was empirically determined by analyzing a large number of phones. The MOTOROLA FAST SAR was developed and validated by the MOTOROLA Research Group in Ft. Lauderdale.

In the initial study, an approximation algorithm based on Linear fit was developed. The accuracy of the algorithm has been demonstrated across a broad frequency range (136-2450 MHz) and for both 1- and 10-g averaged SAR using a sample of 264 SAR measurements from 55 wireless handsets. For the sample size studied, the root-mean-squared errors of the algorithm are 1.2% and 5.8% for 1- and 10-g averaged SAR, respectively. The paper describing the algorithm in detail is expected to be published in August 2004 within the Special Issue of Transactions on MTT.

In the second step, the same research group optimized the fitting algorithm to a Polynomial fit whereby the frequency validity was extended to cover the range 30-6000 MHz. Details of this study can be found in the BEMS 2007 Proceedings.

Both algorithms are implemented in DASY software.

11 Conducted Output Power

11.1 GSM Measurement result

During the process of testing, the EUT was controlled via Agilent Digital Radio Communication tester (E5515C) to ensure the maximum power transmission and proper modulation. This result contains conducted output power for the EUT. In all cases, the measured peak output power should be greater and within 5% than EMI measurement.

Normal Power

Table 11.1-1: The conducted power measurement results for GSM, GPRS and EGPRS

GSM 850 Speech (GMSK)	Measured Power (dBm)			Tune up	calculation	Averaged Power (dBm)		
	251	190	128			251	190	128
Speech	31.71	31.92	31.76	33.50	/	/	/	/
GSM 850 GPRS (GMSK)	Measured Power (dBm)				calculation	Averaged Power (dBm)		
	251	190	128			251	190	128
1 Txslot	31.68	31.90	31.76	33.50	-9.03	22.65	22.87	22.73
2 Txslots	30.03	29.91	29.98	31.00	-6.02	24.01	23.89	23.96
3Txslots	28.00	27.98	27.86	29.00	-4.26	23.74	23.72	23.60
4 Txslots	26.78	26.75	26.53	27.50	-3.01	23.77	23.74	23.52
GSM 850 EGPRS (GMSK)	Measured Power (dBm)				calculation	Averaged Power (dBm)		
	251	190	128			251	190	128
1 Txslot	31.67	31.90	31.76	33.50	-9.03	22.64	22.87	22.73
2 Txslots	30.00	29.90	29.97	31.00	-6.02	23.98	23.88	23.95
3Txslots	28.00	27.99	27.86	29.00	-4.26	23.74	23.73	23.60
4 Txslots	26.77	26.73	26.53	27.50	-3.01	23.76	23.72	23.52
GSM 850 EGPRS (8PSK)	Measured Power (dBm)				calculation	Averaged Power (dBm)		
	251	190	128			251	190	128
1 Txslot	26.81	26.70	26.71	28.00	-9.03	17.78	17.67	17.68
2 Txslots	24.28	24.27	24.25	25.50	-6.02	18.26	18.25	18.23
3Txslots	22.83	22.69	22.58	23.50	-4.26	18.57	18.43	18.32
4 Txslots	21.51	21.35	21.39	22.50	-3.01	18.50	18.34	18.38
PCS1900 Speech (GMSK)	Measured Power (dBm)			Tune up	calculation	Averaged Power (dBm)		
	810	661	512			810	661	512
Speech	29.67	29.60	29.61	30.50	/	/	/	/
PCS1900 GPRS (GMSK)	Measured Power (dBm)				calculation	Averaged Power (dBm)		
	810	661	512			810	661	512
1 Txslot	29.66	29.60	29.60	30.50	-9.03	20.63	20.57	20.57
2 Txslots	28.11	27.92	27.70	28.50	-6.02	22.09	21.90	21.68
3Txslots	25.44	25.15	24.77	26.50	-4.26	21.18	20.89	20.51
4 Txslots	24.59	24.32	24.06	25.50	-3.01	21.58	21.31	21.05
PCS1900 EGPRS (GMSK)	Measured Power (dBm)				calculation	Averaged Power (dBm)		
	810	661	512			810	661	512
1 Txslot	29.65	29.64	29.60	30.50	-9.03	20.62	20.61	20.57



2 Txslots	28.07	27.87	27.71	28.50	-6.02	22.05	21.85	21.69
3Txslots	25.22	25.16	24.73	26.50	-4.26	20.96	20.90	20.47
4 Txslots	24.52	24.32	24.06	25.50	-3.01	21.51	21.31	21.05
PCS1900 EGPRS (8PSK)	Measured Power (dBm)				calculation	Averaged Power (dBm)		
	810	661	512			810	661	512
1 Txslot	25.89	25.71	25.54	27.00	-9.03	16.86	16.68	16.51
2 Txslots	23.80	23.66	23.47	24.50	-6.02	17.78	17.64	17.45
3Txslots	21.92	21.79	21.51	22.50	-4.26	17.66	17.53	17.25
4 Txslots	20.85	20.63	20.37	21.50	-3.01	17.84	17.62	17.36

NOTES:

1) Division Factors

To average the power, the division factor is as follows:

1TX-slot = 1 transmit time slot out of 8 time slots=> conducted power divided by (8/1) => -9.03dB

2TX-slots = 2 transmit time slots out of 8 time slots=> conducted power divided by (8/2) => -6.02dB

3TX-slots = 3 transmit time slots out of 8 time slots=> conducted power divided by (8/3) => -4.26dB

4TX-slots = 4 transmit time slots out of 8 time slots=> conducted power divided by (8/4) => -3.01dB

According to the conducted power as above, the body measurements are performed with 2Txslots for GSM850 and PCS1900.

11.2 WCDMA Measurement result

Normal Power

Table 11.2-1: The conducted Power for WCDMA

Item	band	FDDV result			
	ARFCN	4132 (826.4MHz)	4182 (836.4MHz)	4233 (846.6MHz)	Tune up
WCDMA	\	23.90	24.01	23.97	24.50
HSDPA	1	22.24	22.14	22.28	23.50
	2	22.23	22.22	22.26	23.50
	3	21.74	21.74	21.79	23.00
	4	21.74	21.74	21.78	23.00
HSUPA	1	22.28	22.22	22.30	23.50
	2	20.29	20.17	20.29	21.50
	3	21.27	21.15	21.25	22.50
	4	20.28	20.26	20.30	21.50
	5	22.22	22.14	22.20	23.50
DC-HSDPA	1	21.88	21.75	21.90	23.50
	2	21.84	21.77	21.89	23.50
	3	21.89	21.83	21.93	23.00
	4	21.86	21.76	21.92	23.00
Item	band	FDDIV result			
	ARFCN	1312 (1712.4MHz)	1412 (1732.4MHz)	1513 (1752.6MHz)	
WCDMA	\	23.69	23.78	23.70	24.00
HSDPA	1	21.85	21.94	22.06	23.00
	2	21.90	21.97	21.95	23.00
	3	21.41	21.48	21.48	22.50
	4	21.41	21.48	21.47	22.50
HSUPA	1	21.97	21.98	22.03	23.00
	2	19.98	20.03	20.12	21.00
	3	20.97	21.01	21.07	22.00
	4	20.06	20.03	20.13	21.00
	5	21.98	21.93	21.90	23.00
DC-HSDPA	1	21.36	21.37	21.36	23.00
	2	21.35	21.36	21.39	23.00
	3	21.23	21.32	21.43	22.50
	4	21.22	21.33	21.38	22.50
Item	band	FDDII result			
	ARFCN	9262 (1852.4MHz)	9400 (1880MHz)	9538 (1907.6MHz)	
WCDMA	\	23.46	23.51	23.58	24.00
HSDPA	1	21.94	21.99	22.10	23.00
	2	22.03	22.01	22.04	23.00
	3	21.58	21.56	21.58	22.50



	4	21.58	21.56	21.58	22.50
HSUPA	1	22.00	22.03	22.01	23.00
	2	20.15	19.98	20.06	21.00
	3	21.12	21.09	21.03	22.00
	4	20.13	19.98	20.07	21.00
	5	22.00	21.95	22.04	23.00
DC-HSDPA	1	21.36	21.39	21.38	23.00
	2	21.37	21.42	21.40	23.00
	3	21.38	21.32	21.37	22.50
	4	21.37	21.26	21.37	22.50

Low Power AP ON

Table 11.2-2: The conducted Power for WCDMA

Item	band	FDDIV result			Tune up
	ARFCN	1312 (1712.4MHz)	1412 (1732.4MHz)	1513 (1752.6MHz)	
WCDMA	\	16.50	16.64	16.68	18.00
HSDPA	1	15.92	16.03	16.05	17.00
	2	15.92	16.02	16.05	17.00
	3	15.43	15.53	15.56	16.50
	4	15.42	15.52	15.55	16.50
HSUPA	1	15.95	16.02	16.08	17.00
	2	13.99	14.08	14.12	15.00
	3	14.96	15.04	15.10	16.00
	4	13.98	14.07	14.11	15.00
	5	15.96	16.02	16.10	17.00
DC-HSDPA	1	15.38	15.46	15.59	17.00
	2	15.39	15.43	15.53	17.00
	3	15.39	15.41	15.59	16.50
	4	15.38	15.39	15.59	16.50
Item	band	FDDII result			Tune up
	ARFCN	9262 (1852.4MHz)	9400 (1880MHz)	9538 (1907.6MHz)	
WCDMA	\	19.48	19.54	19.66	21.00
HSDPA	1	19.03	19.10	19.18	20.00
	2	19.08	19.15	19.13	20.00
	3	18.60	18.56	18.65	19.50
	4	18.59	18.56	18.68	19.50
HSUPA	1	19.10	19.12	19.24	20.00
	2	17.24	17.16	17.33	18.00
	3	18.23	18.16	18.33	19.00
	4	17.21	17.26	17.32	18.00
	5	19.12	19.16	19.22	20.00
DC-HSDPA	1	18.91	18.67	18.72	20.00

	2	18.85	18.80	18.73	20.00
	3	18.81	18.68	18.72	19.50
	4	18.80	18.67	18.71	19.50

Low Power Sensor ON

Table 11.2-3: The conducted Power for WCDMA

Item	band	FDDIV result			Tune up
	ARFCN	1312 (1712.4MHz)	1412 (1732.4MHz)	1513 (1752.6MHz)	
WCDMA	\	21.09	21.07	21.08	22.50
HSDPA	1	20.38	20.52	20.55	21.50
	2	20.44	20.55	20.55	21.50
	3	19.95	20.07	20.07	21.00
	4	19.95	20.07	20.07	21.00
HSUPA	1	20.51	20.50	20.60	21.50
	2	18.62	18.65	18.65	19.50
	3	19.53	19.54	19.63	20.50
	4	18.61	18.65	18.65	19.50
	5	20.43	20.50	20.51	21.50
DC-HSDPA	1	20.11	20.09	20.12	21.50
	2	20.09	20.07	20.07	21.50
	3	20.07	20.03	20.11	21.00
	4	20.08	20.06	20.08	21.00
Item	band	FDDII result			
	ARFCN	9262 (1852.4MHz)	9400 (1880MHz)	9538 (1907.6MHz)	
WCDMA	\	21.29	21.19	21.29	22.50
HSDPA	1	20.57	20.52	20.64	21.50
	2	20.63	20.57	20.68	21.50
	3	20.15	20.08	20.21	21.00
	4	20.15	20.09	20.21	21.00
HSUPA	1	20.55	20.62	20.72	21.50
	2	18.67	18.66	18.79	19.50
	3	19.67	19.55	19.65	20.50
	4	18.77	18.66	18.80	19.50
	5	20.60	20.58	20.69	21.50
DC-HSDPA	1	20.35	20.26	20.38	21.50
	2	20.32	20.22	20.29	21.50
	3	20.34	20.21	20.30	21.00
	4	20.36	20.19	20.31	21.00

11.3 LTE Measurement result

Normal power

Table 11.3-1: The conducted Power for LTE

Band 2								
Bandwidth (MHz)	RB allocation	Frequency (MHz)	Max. Target Power (dBm)	QPSK		16QAM		
	RB offset (Start RB)			Actual output power (dBm)	MPR	Actual output power (dBm)	MPR	
1.4 MHz	1RB High (5)	1909.3	24.7	24.24	0	23.06	1	
		1880	24.7	23.77	0	22.94	1	
		1850.7	24.7	23.86	0	23.11	1	
	1RB Middle (3)	1909.3	24.7	24.31	0	23.30	1	
		1880	24.7	24.21	0	23.21	1	
		1850.7	24.7	23.79	0	23.25	1	
	1RB Low (0)	1909.3	24.7	24.36	0	23.18	1	
		1880	24.7	24.21	0	23.05	1	
		1850.7	24.7	23.94	0	22.96	1	
	3RB High (3)	1909.3	24.7	24.18	0	23.19	1	
		1880	24.7	24.02	0	23.07	1	
		1850.7	24.7	24.00	0	22.97	1	
	3RB Middle (1)	1909.3	24.7	24.26	0	23.14	1	
		1880	24.7	24.06	0	23.16	1	
		1850.7	24.7	23.94	0	23.05	1	
	3RB Low (0)	1909.3	24.7	24.05	0	23.21	1	
		1880	24.7	24.05	0	23.08	1	
		1850.7	24.7	23.85	0	22.96	1	
	6RB (0)	1909.3	24.7	23.05	1	22.15	2	
		1880	24.7	22.99	1	21.91	2	
		1850.7	24.7	22.86	1	21.99	2	
	3 MHz	1RB High (14)	1908.5	24.7	23.84	0	23.38	1
			1880	24.7	23.88	0	23.17	1
			1851.5	24.7	23.97	0	22.91	1
1RB Middle (7)		1908.5	24.7	24.08	0	23.33	1	
		1880	24.7	24.14	0	23.06	1	
		1851.5	24.7	23.91	0	22.95	1	
1RB Low (0)		1908.5	24.7	24.28	0	23.35	1	
		1880	24.7	24.05	0	23.25	1	
		1851.5	24.7	23.84	0	23.07	1	
8RB High (7)		1908.5	24.7	23.00	1	22.32	2	
		1880	24.7	22.96	1	22.15	2	
		1851.5	24.7	22.90	1	22.10	2	
8RB Middle (4)		1908.5	24.7	23.16	1	22.38	2	
		1880	24.7	22.99	1	22.12	2	
		1851.5	24.7	22.87	1	22.14	2	
8RB		1908.5	24.7	23.18	1	22.35	2	

	Low (0)	1880	24.7	23.07	1	22.13	2	
		1851.5	24.7	22.95	1	22.13	2	
	15RB (0)	1908.5	24.7	23.28	1	22.29	2	
		1880	24.7	23.11	1	22.20	2	
		1851.5	24.7	23.00	1	21.98	2	
5 MHz	1RB High (24)	1907.5	24.7	24.07	0	22.48	1	
		1880	24.7	24.02	0	22.66	1	
		1852.5	24.7	23.94	0	22.51	1	
	1RB Middle (12)	1907.5	24.7	24.13	0	22.77	1	
		1880	24.7	24.07	0	22.78	1	
		1852.5	24.7	23.98	0	22.53	1	
	1RB Low (0)	1907.5	24.7	24.14	0	22.78	1	
		1880	24.7	24.23	0	22.79	1	
		1852.5	24.7	23.74	0	22.52	1	
	12RB High (13)	1907.5	24.7	23.10	1	22.30	2	
		1880	24.7	22.99	1	22.13	2	
		1852.5	24.7	22.88	1	21.99	2	
	12RB Middle (6)	1907.5	24.7	23.20	1	22.25	2	
		1880	24.7	23.04	1	22.15	2	
		1852.5	24.7	22.94	1	22.07	2	
	12RB Low (0)	1907.5	24.7	23.29	1	22.28	2	
		1880	24.7	23.08	1	22.19	2	
		1852.5	24.7	23.00	1	22.06	2	
	25RB (0)	1907.5	24.7	23.20	1	22.45	2	
		1880	24.7	23.13	1	22.35	2	
		1852.5	24.7	23.02	1	22.27	2	
	10 MHz	1RB High (49)	1905	24.7	24.17	0	23.42	1
			1880	24.7	24.05	0	23.35	1
			1855	24.7	23.88	0	23.03	1
1RB Middle (24)		1905	24.7	24.26	0	23.49	1	
		1880	24.7	24.25	0	23.45	1	
		1855	24.7	24.18	0	23.48	1	
1RB Low (0)		1905	24.7	24.44	0	23.47	1	
		1880	24.7	24.42	0	23.44	1	
		1855	24.7	24.23	0	23.22	1	
25RB High (25)		1905	24.7	23.17	1	22.08	2	
		1880	24.7	23.01	1	22.12	2	
		1855	24.7	22.94	1	22.10	2	
25RB Middle (12)		1905	24.7	23.22	1	22.39	2	
		1880	24.7	23.09	1	22.13	2	
		1855	24.7	23.04	1	22.17	2	
25RB Low (0)		1905	24.7	23.28	1	22.38	2	
		1880	24.7	23.10	1	22.17	2	
		1855	24.7	23.08	1	22.14	2	
50RB (0)		1905	24.7	23.26	1	22.38	2	
		1880	24.7	23.12	1	22.24	2	
		1855	24.7	23.03	1	22.14	2	
15 MHz		1RB	1902.5	24.7	23.87	0	23.39	1

	High (74)	1880	24.7	24.26	0	23.34	1	
		1857.5	24.7	23.97	0	23.29	1	
	1RB Middle (37)	1902.5	24.7	24.31	0	23.44	1	
		1880	24.7	24.07	0	23.32	1	
	1857.5	24.7	24.06	0	23.25	1		
		1902.5	24.7	24.22	0	23.50	1	
	1RB Low (0)	1880	24.7	24.07	0	23.48	1	
		1857.5	24.7	23.94	0	23.42	1	
	36RB High (38)	1902.5	24.7	23.12	1	22.19	2	
		1880	24.7	23.06	1	22.13	2	
		1857.5	24.7	22.98	1	21.97	2	
	36RB Middle (19)	1902.5	24.7	23.19	1	22.36	2	
		1880	24.7	23.07	1	22.23	2	
		1857.5	24.7	22.99	1	21.96	2	
	36RB Low (0)	1902.5	24.7	23.27	1	22.40	2	
		1880	24.7	23.12	1	21.97	2	
		1857.5	24.7	22.59	1	22.03	2	
	75RB (0)	1902.5	24.7	23.23	1	22.29	2	
		1880	24.7	23.15	1	22.22	2	
		1857.5	24.7	22.59	1	22.05	2	
	20 MHz	1RB High (99)	1900	24.7	23.98	0	23.34	1
			1880	24.7	24.16	0	23.49	1
			1860	24.7	24.06	0	23.45	1
		1RB Middle (50)	1900	24.7	24.50	0	23.50	1
			1880	24.7	24.37	0	23.49	1
			1860	24.7	24.38	0	23.48	1
		1RB Low (0)	1900	24.7	24.10	0	23.49	1
			1880	24.7	24.04	0	23.48	1
			1860	24.7	23.79	0	23.49	1
		50RB High (50)	1900	24.7	23.07	1	22.13	2
			1880	24.7	23.03	1	21.97	2
			1860	24.7	22.97	1	22.13	2
		50RB Middle (25)	1900	24.7	23.20	1	22.31	2
1880			24.7	23.12	1	22.22	2	
1860			24.7	23.03	1	22.29	2	
50RB Low (0)		1900	24.7	23.27	1	22.34	2	
		1880	24.7	23.21	1	22.11	2	
		1860	24.7	23.10	1	22.04	2	
100RB (0)		1900	24.7	23.29	1	22.39	2	
		1880	24.7	23.15	1	22.28	2	
		1860	24.7	23.11	1	22.18	2	
Band 4								
Bandwidth (MHz)		RB allocation	Frequency (MHz)	Max. Target Power (dBm)	QPSK		16QAM	
		RB offset (Start RB)			Actual output power (dBm)	MPR	Actual output power (dBm)	MPR
1.4 MHz		1RB	1754.3	24.2	23.71	0	23.16	1

	High (5)	1732.5	24.2	23.86	0	22.68	1	
		1710.7	24.2	23.67	0	22.92	1	
	1RB Middle (3)	1754.3	24.2	23.61	0	23.00	1	
		1732.5	24.2	23.73	0	22.93	1	
	1RB Low (0)	1710.7	24.2	23.57	0	23.17	1	
		1754.3	24.2	23.52	0	22.99	1	
		1732.5	24.2	23.75	0	22.70	1	
	3RB High (3)	1710.7	24.2	23.79	0	23.09	1	
		1754.3	24.2	23.63	0	22.78	1	
		1732.5	24.2	23.58	0	22.70	1	
	3RB Middle (1)	1710.7	24.2	23.48	0	22.46	1	
		1754.3	24.2	23.50	0	22.40	1	
		1732.5	24.2	23.86	0	22.73	1	
	3RB Low (0)	1710.7	24.2	23.61	0	22.59	1	
		1754.3	24.2	23.64	0	22.70	1	
		1732.5	24.2	23.37	0	22.24	1	
	6RB (0)	1710.7	24.2	23.64	0	22.75	1	
		1754.3	24.2	22.54	1	21.31	2	
		1732.5	24.2	22.44	1	21.82	2	
	3 MHz	1RB High (14)	1710.7	24.2	22.61	1	21.78	2
			1753.5	24.2	23.89	0	23.14	1
			1732.5	24.2	23.74	0	22.79	1
		1RB Middle (7)	1711.5	24.2	23.76	0	22.82	1
			1753.5	24.2	23.47	0	23.07	1
			1732.5	24.2	23.79	0	22.88	1
		1RB Low (0)	1711.5	24.2	23.44	0	22.84	1
			1753.5	24.2	23.50	0	22.63	1
			1732.5	24.2	23.38	0	22.63	1
		8RB High (7)	1711.5	24.2	23.68	0	22.83	1
			1753.5	24.2	22.68	1	21.76	2
1732.5			24.2	22.62	1	21.84	2	
8RB Middle (4)		1711.5	24.2	22.64	1	21.75	2	
		1753.5	24.2	22.57	1	21.68	2	
		1732.5	24.2	22.54	1	21.69	2	
8RB Low (0)		1711.5	24.2	22.77	1	21.67	2	
		1753.5	24.2	22.60	1	21.54	2	
		1732.5	24.2	22.55	1	21.90	2	
15RB (0)		1711.5	24.2	22.73	1	21.70	2	
		1753.5	24.2	22.63	1	21.64	2	
		1732.5	24.2	22.52	1	21.79	2	
5 MHz		1RB High (24)	1711.5	24.2	22.71	1	21.88	2
			1752.5	24.2	23.56	0	22.87	1
			1732.5	24.2	23.43	0	21.94	1
		1RB Middle (12)	1712.5	24.2	23.47	0	22.73	1
			1752.5	24.2	23.66	0	22.74	1
			1732.5	24.2	23.45	0	22.78	1
		1RB	1712.5	24.2	23.69	0	22.67	1
		1RB	1752.5	24.2	23.33	0	22.74	1

	Low (0)	1732.5	24.2	23.35	0	22.29	1
		1712.5	24.2	23.25	0	22.59	1
		1752.5	24.2	22.67	1	21.60	2
	12RB High (13)	1732.5	24.2	22.82	1	21.72	2
		1712.5	24.2	22.69	1	21.63	2
		1752.5	24.2	22.61	1	21.60	2
	12RB Middle (6)	1732.5	24.2	22.54	1	21.38	2
		1712.5	24.2	22.47	1	21.56	2
		1752.5	24.2	22.57	1	21.45	2
	12RB Low (0)	1732.5	24.2	22.58	1	21.65	2
		1712.5	24.2	22.54	1	21.51	2
		1752.5	24.2	22.61	1	21.52	2
	25RB (0)	1732.5	24.2	22.63	1	21.79	2
		1712.5	24.2	22.55	1	21.46	2
		1750	24.2	23.26	0	23.13	1
10 MHz	1RB High (49)	1732.5	24.2	23.57	0	22.60	1
		1715	24.2	23.61	0	22.95	1
		1750	24.2	23.32	0	22.66	1
	1RB Middle (24)	1732.5	24.2	23.67	0	23.19	1
		1715	24.2	23.79	0	23.14	1
		1750	24.2	23.51	0	23.20	1
	1RB Low (0)	1732.5	24.2	23.86	0	22.86	1
		1715	24.2	23.79	0	23.18	1
		1750	24.2	22.47	1	21.65	2
	25RB High (25)	1732.5	24.2	22.55	1	21.52	2
		1715	24.2	22.64	1	21.54	2
		1750	24.2	22.49	1	21.41	2
	25RB Middle (12)	1732.5	24.2	22.53	1	21.49	2
		1715	24.2	22.62	1	21.68	2
		1750	24.2	22.54	1	21.61	2
25RB Low (0)	1732.5	24.2	22.56	1	21.46	2	
	1715	24.2	22.67	1	21.69	2	
	1750	24.2	22.50	1	21.46	2	
50RB (0)	1732.5	24.2	22.58	1	21.55	2	
	1715	24.2	22.73	1	21.59	2	
	1747.5	24.2	23.56	0	22.99	1	
15 MHz	1RB High (74)	1732.5	24.2	23.55	0	22.91	1
		1717.5	24.2	23.53	0	22.72	1
		1747.5	24.2	23.62	0	22.95	1
	1RB Middle (37)	1732.5	24.2	23.54	0	22.83	1
		1717.5	24.2	23.79	0	22.58	1
		1747.5	24.2	23.43	0	22.75	1
	1RB Low (0)	1732.5	24.2	23.34	0	22.91	1
		1717.5	24.2	23.37	0	22.60	1
		1747.5	24.2	22.70	1	21.65	2
	36RB High (38)	1732.5	24.2	22.67	1	21.62	2
		1717.5	24.2	22.69	1	21.75	2
		1747.5	24.2	22.56	1	21.55	2

	Middle (19)	1732.5	24.2	22.25	1	21.29	2	
		1717.5	24.2	22.49	1	21.58	2	
		1747.5	24.2	22.53	1	21.55	2	
	36RB Low (0)	1732.5	24.2	22.45	1	21.49	2	
		1717.5	24.2	22.46	1	21.53	2	
		1747.5	24.2	22.66	1	21.68	2	
	75RB (0)	1732.5	24.2	22.65	1	21.72	2	
		1717.5	24.2	22.61	1	21.69	2	
		1745	24.2	23.96	0	22.57	1	
20 MHz	1RB High (99)	1732.5	24.2	23.70	0	23.19	1	
		1720	24.2	23.76	0	22.57	1	
		1745	24.2	23.63	0	22.63	1	
	1RB Middle (50)	1732.5	24.2	23.45	0	23.18	1	
		1720	24.2	23.97	0	22.65	1	
		1745	24.2	23.81	0	22.71	1	
	1RB Low (0)	1732.5	24.2	23.40	0	23.00	1	
		1720	24.2	23.58	0	22.58	1	
		1745	24.2	22.70	1	21.84	2	
	50RB High (50)	1732.5	24.2	22.66	1	21.58	2	
		1720	24.2	22.74	1	21.58	2	
		1745	24.2	22.54	1	21.69	2	
	50RB Middle (25)	1732.5	24.2	22.51	1	21.53	2	
		1720	24.2	22.51	1	21.52	2	
		1745	24.2	22.51	1	21.50	2	
	50RB Low (0)	1732.5	24.2	22.53	1	21.51	2	
		1720	24.2	22.50	1	21.51	2	
		1745	24.2	22.69	1	21.59	2	
	100RB (0)	1732.5	24.2	22.67	1	21.57	2	
		1720	24.2	22.65	1	21.56	2	
		1745	24.2	22.69	1	21.59	2	
	Band 5							
	Bandwidth (MHz)	RB allocation	Frequency (MHz)	Max. Target Power (dBm)	QPSK		16QAM	
		RB offset (Start RB)			Actual output power (dBm)	MPR	Actual output power (dBm)	MPR
	1.4 MHz	1RB High (5)	848.3	24.3	23.17	0	22.23	1
			836.5	24.3	23.15	0	22.14	1
			824.7	24.3	22.92	0	22.71	1
1RB Middle (3)		848.3	24.3	23.16	0	22.17	1	
		836.5	24.3	23.37	0	22.22	1	
		824.7	24.3	23.16	0	22.66	1	
1RB Low (0)		848.3	24.3	22.95	0	21.90	1	
		836.5	24.3	23.32	0	22.36	1	
		824.7	24.3	22.91	0	22.57	1	
3RB High (3)		848.3	24.3	23.21	0	22.09	1	
		836.5	24.3	23.05	0	22.40	1	
		824.7	24.3	23.22	0	22.16	1	
3RB	848.3	24.3	23.18	0	22.38	1		

	Middle (1)	836.5	24.3	23.08	0	22.10	1	
		824.7	24.3	23.34	0	22.43	1	
		848.3	24.3	23.21	0	22.18	1	
	3RB Low (0)	836.5	24.3	23.14	0	22.28	1	
		824.7	24.3	23.21	0	22.52	1	
		848.3	24.3	22.12	1	21.39	2	
	6RB (0)	836.5	24.3	22.05	1	21.12	2	
		824.7	24.3	22.30	1	21.39	2	
		847.5	24.3	23.04	0	22.33	1	
3 MHz	1RB High (14)	836.5	24.3	23.28	0	22.48	1	
		825.5	24.3	23.31	0	22.66	1	
		847.5	24.3	23.40	0	22.82	1	
	1RB Middle (7)	836.5	24.3	23.15	0	22.79	1	
		825.5	24.3	23.14	0	22.47	1	
		847.5	24.3	23.29	0	22.27	1	
	1RB Low (0)	836.5	24.3	23.16	0	22.82	1	
		825.5	24.3	23.03	0	22.27	1	
		847.5	24.3	22.18	1	21.29	2	
	8RB High (7)	836.5	24.3	22.07	1	21.29	2	
		825.5	24.3	22.22	1	20.91	2	
		847.5	24.3	22.25	1	21.37	2	
	8RB Middle (4)	836.5	24.3	22.08	1	21.32	2	
		825.5	24.3	22.35	1	21.39	2	
		847.5	24.3	22.17	1	21.29	2	
	8RB Low (0)	836.5	24.3	22.14	1	20.98	2	
		825.5	24.3	22.34	1	21.23	2	
		847.5	24.3	22.24	1	21.27	2	
	15RB (0)	836.5	24.3	22.22	1	21.22	2	
		825.5	24.3	22.17	1	21.15	2	
		846.5	24.3	22.88	0	21.50	1	
	5 MHz	1RB High (24)	836.5	24.3	22.89	0	21.44	1
			826.5	24.3	23.12	0	21.74	1
			846.5	24.3	23.21	0	22.44	1
		1RB Middle (12)	836.5	24.3	22.93	0	22.26	1
			826.5	24.3	23.30	0	22.01	1
			846.5	24.3	23.00	0	21.57	1
1RB Low (0)		836.5	24.3	23.04	0	21.43	1	
		826.5	24.3	23.07	0	22.08	1	
		846.5	24.3	22.14	1	21.13	2	
12RB High (13)		836.5	24.3	22.14	1	21.24	2	
		826.5	24.3	22.13	1	21.09	2	
		846.5	24.3	22.29	1	21.16	2	
12RB Middle (6)		836.5	24.3	22.23	1	20.94	2	
		826.5	24.3	22.16	1	21.09	2	
		846.5	24.3	22.24	1	21.25	2	
12RB Low (0)		836.5	24.3	22.25	1	21.21	2	
		826.5	24.3	22.19	1	21.04	2	
		846.5	24.3	22.26	1	21.42	2	
25RB		846.5	24.3	22.26	1	21.42	2	

10 MHz	(0)	836.5	24.3	22.17	1	21.34	2
		826.5	24.3	22.18	1	21.21	2
	1RB High (49)	844.0	24.3	23.29	0	22.39	1
		836.5	24.3	23.23	0	22.40	1
		829.0	24.3	22.82	0	22.68	1
	1RB Middle (24)	844.0	24.3	23.42	0	22.83	1
		836.5	24.3	23.33	0	22.63	1
		829.0	24.3	23.25	0	22.69	1
	1RB Low (0)	844.0	24.3	23.40	0	22.21	1
		836.5	24.3	23.33	0	22.43	1
		829.0	24.3	23.25	0	22.85	1
	25RB High (25)	844.0	24.3	22.25	1	21.24	2
		836.5	24.3	22.12	1	21.09	2
		829.0	24.3	22.09	1	21.13	2
	25RB Middle (12)	844.0	24.3	22.25	1	21.24	2
		836.5	24.3	22.23	1	21.20	2
		829.0	24.3	22.16	1	21.42	2
	25RB Low (0)	844.0	24.3	22.20	1	21.20	2
		836.5	24.3	22.24	1	21.19	2
		829.0	24.3	22.21	1	21.21	2
	50RB (0)	844.0	24.3	22.31	1	21.24	2
		836.5	24.3	22.22	1	21.18	2
		829.0	24.3	22.22	1	21.23	2

Band 12

Bandwidth (MHz)	RB allocation	Frequency (MHz)	Max. Target Power (dBm)	QPSK		16QAM	
	RB offset (Start RB)			Actual output power (dBm)	MPR	Actual output power (dBm)	MPR
1.4 MHz	1RB High (5)	715.3	23.4	22.31	0	21.50	1
		707.5	23.4	22.40	0	21.56	1
		699.7	23.4	22.22	0	21.25	1
	1RB Middle (3)	715.3	23.4	22.19	0	21.75	1
		707.5	23.4	22.10	0	21.88	1
		699.7	23.4	22.41	0	21.47	1
	1RB Low (0)	715.3	23.4	22.37	0	21.46	1
		707.5	23.4	22.44	0	21.90	1
		699.7	23.4	22.41	0	21.40	1
	3RB High (3)	715.3	23.4	22.25	0	21.38	1
		707.5	23.4	22.37	0	21.49	1
		699.7	23.4	22.31	0	21.42	1
	3RB Middle (1)	715.3	23.4	22.39	0	21.08	1
		707.5	23.4	22.32	0	21.10	1
		699.7	23.4	22.40	0	21.16	1
	3RB Low (0)	715.3	23.4	22.26	0	21.31	1
		707.5	23.4	22.37	0	21.40	1
		699.7	23.4	22.33	0	21.37	1
	6RB	715.3	23.4	21.12	1	20.06	2

	(0)	707.5	23.4	21.26	1	20.04	2
		699.7	23.4	21.27	1	20.03	2
3 MHz	1RB High (14)	714.5	23.4	22.35	0	21.92	1
		707.5	23.4	22.16	0	21.71	1
		700.5	23.4	22.32	0	21.86	1
	1RB Middle (7)	714.5	23.4	22.44	0	21.49	1
		707.5	23.4	22.54	0	21.76	1
		700.5	23.4	22.52	0	21.68	1
	1RB Low (0)	714.5	23.4	22.33	0	21.45	1
		707.5	23.4	22.38	0	21.40	1
		700.5	23.4	22.44	0	21.82	1
	8RB High (7)	714.5	23.4	21.26	1	19.99	2
		707.5	23.4	21.34	1	20.27	2
		700.5	23.4	21.49	1	20.42	2
	8RB Middle (4)	714.5	23.4	21.28	1	20.39	2
		707.5	23.4	21.26	1	20.31	2
		700.5	23.4	21.38	1	20.51	2
	8RB Low (0)	714.5	23.4	21.39	1	20.52	2
		707.5	23.4	21.29	1	20.31	2
		700.5	23.4	21.21	1	20.43	2
	15RB (0)	714.5	23.4	21.29	1	20.20	2
		707.5	23.4	21.30	1	20.20	2
		700.5	23.4	21.47	1	20.39	2
5 MHz	1RB High (24)	713.5	23.4	22.12	0	21.46	1
		707.5	23.4	22.02	0	21.62	1
		701.5	23.4	22.09	0	21.34	1
	1RB Middle (12)	713.5	23.4	22.31	0	21.68	1
		707.5	23.4	22.45	0	21.46	1
		701.5	23.4	22.19	0	20.71	1
	1RB Low (0)	713.5	23.4	21.98	0	21.73	1
		707.5	23.4	22.12	0	21.54	1
		701.5	23.4	22.17	0	21.28	1
	12RB High (13)	713.5	23.4	21.24	1	20.23	2
		707.5	23.4	21.38	1	20.29	2
		701.5	23.4	21.35	1	20.26	2
	12RB Middle (6)	713.5	23.4	21.35	1	20.07	2
		707.5	23.4	21.38	1	20.19	2
		701.5	23.4	21.40	1	20.22	2
	12RB Low (0)	713.5	23.4	21.23	1	20.15	2
		707.5	23.4	21.31	1	20.25	2
		701.5	23.4	21.35	1	20.25	2
	25RB (0)	713.5	23.4	21.23	1	20.24	2
		707.5	23.4	21.23	1	20.36	2
		701.5	23.4	21.30	1	20.21	2
10 MHz	1RB High (49)	711	23.4	22.19	0	21.79	1
		707.5	23.4	22.22	0	21.90	1
		704	23.4	22.14	0	20.85	1
	1RB Middle	711	23.4	22.71	0	21.85	1
		707.5	23.4	22.21	0	21.87	1

	(24)	704	23.4	22.39	0	20.76	1
	1RB Low (0)	711	23.4	22.26	0	21.90	1
		707.5	23.4	22.19	0	21.87	1
		704	23.4	21.91	0	20.87	1
	25RB High (25)	711	23.4	21.29	1	20.28	2
		707.5	23.4	21.32	1	20.41	2
		704	23.4	21.29	1	20.27	2
	25RB Middle (12)	711	23.4	21.28	1	20.25	2
		707.5	23.4	21.33	1	20.22	2
		704	23.4	21.29	1	20.23	2
	25RB Low (0)	711	23.4	21.37	1	20.25	2
		707.5	23.4	21.29	1	20.23	2
		704	23.4	21.32	1	20.40	2
	50RB (0)	711	23.4	21.31	1	20.47	2
		707.5	23.4	21.29	1	20.45	2
704		23.4	21.30	1	20.18	2	
Band 30							
Bandwidth (MHz)	RB allocation	Frequency (MHz)	Max. Target Power (dBm)	QPSK		16QAM	
	RB offset (Start RB)			Actual output power (dBm)	MPR	Actual output power (dBm)	MPR
5 MHz	1RB High (24)	2312.5	23.9	22.89	0	22.26	1
		2310	23.9	22.67	0	21.64	1
		2307.5	23.9	22.61	0	21.00	1
	1RB Middle (12)	2312.5	23.9	22.85	0	22.41	1
		2310	23.9	22.99	0	21.44	1
		2307.5	23.9	22.83	0	21.46	1
	1RB Low (0)	2312.5	23.9	22.79	0	22.21	1
		2310	23.9	22.84	0	21.68	1
		2307.5	23.9	22.92	0	21.59	1
	12RB High (13)	2312.5	23.9	22.02	1	21.08	2
		2310	23.9	22.10	1	21.04	2
		2307.5	23.9	22.15	1	21.36	2
	12RB Middle (6)	2312.5	23.9	22.16	1	21.17	2
		2310	23.9	22.12	1	21.09	2
		2307.5	23.9	22.16	1	21.19	2
	12RB Low (0)	2312.5	23.9	22.13	1	21.05	2
		2310	23.9	22.19	1	21.12	2
		2307.5	23.9	22.18	1	21.20	2
25RB (0)	2312.5	23.9	22.13	1	21.07	2	
	2310	23.9	22.15	1	21.28	2	
	2307.5	23.9	22.06	1	21.38	2	
10 MHz	1RB High (49)	2310	23.9	22.97	0	22.40	1
	1RB Middle	2310	23.9	23.41	0	22.50	1

	1RB Low (0)	2310	23.9	23.29	0	22.89	1
	25RB High (25)	2310	23.9	22.12	1	21.11	2
	25RB Middle	2310	23.9	22.20	1	21.14	2
	25RB Low (0)	2310	23.9	22.26	1	21.47	2
	50RB (0)	2310	23.9	22.16	1	21.20	2

Low power AP ON

Table 11.3-2: The conducted Power for LTE

Band 2								
Bandwidth (MHz)	RB allocation	Frequency (MHz)	Max. Target Power (dBm)	QPSK		16QAM		
	RB offset (Start RB)			Actual output power (dBm)	MPR	Actual output power (dBm)	MPR	
1.4 MHz	1RB High (5)	1909.3	21	19.86	0	20.31	0	
		1880	21	19.85	0	20.22	0	
		1850.7	21	19.83	0	20.20	0	
	1RB Middle (3)	1909.3	21	19.91	0	20.57	0	
		1880	21	19.90	0	20.30	0	
		1850.7	21	20.09	0	20.41	0	
	1RB Low (0)	1909.3	21	20.05	0	20.31	0	
		1880	21	19.85	0	20.21	0	
		1850.7	21	20.03	0	20.38	0	
	3RB High (3)	1909.3	21	20.11	0	19.91	0	
		1880	21	20.06	0	20.14	0	
		1850.7	21	20.35	0	20.04	0	
	3RB Middle (1)	1909.3	21	20.25	0	20.08	0	
		1880	21	20.11	0	19.93	0	
		1850.7	21	20.30	0	20.00	0	
	3RB Low (0)	1909.3	21	19.96	0	19.94	0	
		1880	21	19.98	0	19.89	0	
		1850.7	21	20.33	0	20.34	0	
	6RB (0)	1909.3	21	19.97	0	19.89	0	
		1880	21	20.00	0	19.84	0	
		1850.7	21	20.18	0	19.91	0	
	3 MHz	1RB High (14)	1908.5	21	20.00	0	20.17	0
			1880	21	20.07	0	20.48	0
			1851.5	21	20.25	0	20.70	0
		1RB Middle (7)	1908.5	21	19.97	0	20.39	0
			1880	21	20.34	0	20.53	0
			1851.5	21	20.52	0	21.13	0
1RB Low (0)		1908.5	21	20.06	0	20.25	0	
		1880	21	20.08	0	20.55	0	

	8RB High (7)	1851.5	21	20.30	0	20.77	0	
		1908.5	21	20.13	0	20.13	0	
		1880	21	20.09	0	20.17	0	
	8RB Middle (4)	1851.5	21	20.37	0	20.34	0	
		1908.5	21	20.11	0	20.31	0	
		1880	21	20.04	0	20.14	0	
	8RB Low (0)	1851.5	21	20.21	0	20.41	0	
		1908.5	21	20.17	0	20.17	0	
		1880	21	20.00	0	20.18	0	
	15RB (0)	1851.5	21	20.25	0	20.43	0	
		1908.5	21	20.11	0	20.11	0	
		1880	21	20.07	0	20.04	0	
5 MHz	1RB High (24)	1851.5	21	20.33	0	20.42	0	
		1907.5	21	20.06	0	20.31	0	
		1880	21	20.26	0	20.57	0	
	1RB Middle (12)	1852.5	21	20.40	0	20.74	0	
		1907.5	21	20.31	0	20.56	0	
		1880	21	20.39	0	20.54	0	
	1RB Low (0)	1852.5	21	20.50	0	20.72	0	
		1907.5	21	20.09	0	20.51	0	
		1880	21	20.14	0	20.31	0	
	12RB High (13)	1852.5	21	20.16	0	20.48	0	
		1907.5	21	20.11	0	20.09	0	
		1880	21	20.15	0	20.22	0	
	12RB Middle (6)	1852.5	21	20.26	0	20.21	0	
		1907.5	21	20.15	0	20.10	0	
		1880	21	20.18	0	20.13	0	
	12RB Low (0)	1852.5	21	20.34	0	20.39	0	
		1907.5	21	20.16	0	20.15	0	
		1880	21	20.12	0	20.26	0	
	25RB (0)	1852.5	21	20.31	0	20.32	0	
		1907.5	21	20.15	0	20.24	0	
		1880	21	20.13	0	20.12	0	
	10 MHz	1RB High (49)	1852.5	21	20.30	0	20.43	0
			1905	21	20.12	0	20.49	0
			1880	21	20.11	0	20.46	0
1RB Middle (24)		1855	21	20.51	0	20.63	0	
		1905	21	20.59	0	20.72	0	
		1880	21	20.50	0	20.68	0	
1RB Low (0)		1855	21	20.45	0	20.47	0	
		1905	21	20.19	0	20.86	0	
		1880	21	20.13	0	20.46	0	
25RB High (25)		1855	21	20.37	0	21.06	0	
		1905	21	20.17	0	20.23	0	
		1880	21	20.18	0	20.29	0	
25RB Middle		1855	21	20.16	0	20.19	0	
		1905	21	20.22	0	20.17	0	
			1880	21	20.13	0	20.19	0



	(12)	1855	21	20.23	0	20.27	0	
	25RB Low (0)	1905	21	20.18	0	20.16	0	
		1880	21	20.11	0	20.16	0	
		1855	21	20.33	0	20.41	0	
	50RB (0)	1905	21	20.18	0	20.12	0	
		1880	21	20.17	0	20.15	0	
1855		21	20.30	0	20.25	0		
15 MHz	1RB High (74)	1902.5	21	20.02	0	20.75	0	
		1880	21	20.08	0	20.36	0	
		1857.5	21	20.34	0	20.68	0	
	1RB Middle (37)	1902.5	21	20.28	0	20.61	0	
		1880	21	20.25	0	20.52	0	
		1857.5	21	20.32	0	20.71	0	
	1RB Low (0)	1902.5	21	20.01	0	20.55	0	
		1880	21	20.05	0	20.45	0	
		1857.5	21	20.23	0	20.75	0	
	36RB High (38)	1902.5	21	20.10	0	20.16	0	
		1880	21	20.07	0	20.07	0	
		1857.5	21	20.34	0	20.37	0	
	36RB Middle (19)	1902.5	21	20.15	0	20.08	0	
		1880	21	20.14	0	20.01	0	
		1857.5	21	20.24	0	20.35	0	
	36RB Low (0)	1902.5	21	20.20	0	20.19	0	
		1880	21	20.14	0	20.21	0	
		1857.5	21	20.34	0	20.46	0	
	75RB (0)	1902.5	21	20.16	0	20.03	0	
		1880	21	20.07	0	20.09	0	
		1857.5	21	20.28	0	20.35	0	
	20 MHz	1RB High (99)	1900	21	20.18	0	20.17	0
			1880	21	20.42	0	20.16	0
			1860	21	20.48	0	20.22	0
1RB Middle (50)		1900	21	20.28	0	20.17	0	
		1880	21	20.51	0	20.25	0	
		1860	21	20.62	0	20.25	0	
1RB Low (0)		1900	21	20.05	0	20.09	0	
		1880	21	20.17	0	20.17	0	
		1860	21	20.21	0	20.30	0	
50RB High (50)		1900	21	20.17	0	20.11	0	
		1880	21	20.17	0	20.18	0	
		1860	21	20.32	0	20.44	0	
50RB Middle (25)		1900	21	20.14	0	19.95	0	
		1880	21	20.12	0	20.05	0	
		1860	21	20.36	0	20.29	0	
50RB Low (0)		1900	21	20.24	0	20.22	0	
		1880	21	20.08	0	20.26	0	
		1860	21	20.27	0	20.24	0	
100RB (0)		1900	21	20.18	0	20.16	0	
		1880	21	20.09	0	20.18	0	



		1860	21	20.32	0	20.33	0
Band 4							
Bandwidth (MHz)	RB allocation	Frequency (MHz)	Max. Target Power (dBm)	QPSK		16QAM	
	RB offset (Start RB)			Actual output power (dBm)	MPR	Actual output power (dBm)	MPR
1.4 MHz	1RB High (5)	1754.3	18	17.14	0	17.29	0
		1732.5	18	17.15	0	17.64	0
		1710.7	18	17.15	0	17.02	0
	1RB Middle (3)	1754.3	18	17.14	0	17.77	0
		1732.5	18	17.10	0	17.65	0
		1710.7	18	17.25	0	17.30	0
	1RB Low (0)	1754.3	18	17.09	0	17.66	0
		1732.5	18	16.97	0	17.43	0
		1710.7	18	17.15	0	17.10	0
	3RB High (3)	1754.3	18	17.02	0	17.11	0
		1732.5	18	17.03	0	17.03	0
		1710.7	18	16.84	0	16.84	0
	3RB Middle (1)	1754.3	18	17.02	0	17.02	0
		1732.5	18	17.03	0	17.03	0
		1710.7	18	16.84	0	16.84	0
	3RB Low (0)	1754.3	18	17.02	0	17.01	0
		1732.5	18	17.03	0	17.03	0
		1710.7	18	16.83	0	16.83	0
6RB (0)	1754.3	18	17.01	0	16.92	0	
	1732.5	18	17.03	0	17.03	0	
	1710.7	18	16.83	0	16.92	0	
3 MHz	1RB High (14)	1753.5	18	17.03	0	17.16	0
		1732.5	18	16.98	0	17.38	0
		1711.5	18	17.12	0	17.64	0
	1RB Middle (7)	1753.5	18	17.04	0	17.17	0
		1732.5	18	17.23	0	17.67	0
		1711.5	18	16.96	0	17.14	0
	1RB Low (0)	1753.5	18	16.94	0	16.97	0
		1732.5	18	17.05	0	17.27	0
		1711.5	18	16.98	0	17.04	0
	8RB High (7)	1753.5	18	17.00	0	16.99	0
		1732.5	18	17.02	0	17.02	0
		1711.5	18	16.99	0	16.99	0
	8RB Middle (4)	1753.5	18	16.99	0	16.99	0
		1732.5	18	17.03	0	17.03	0
		1711.5	18	16.90	0	16.90	0
	8RB Low (0)	1753.5	18	16.99	0	16.83	0
		1732.5	18	17.03	0	17.03	0
		1711.5	18	16.90	0	16.90	0
15RB (0)	1753.5	18	16.81	0	16.99	0	
	1732.5	18	17.07	0	17.08	0	

		1711.5	18	16.90	0	16.82	0	
5 MHz	1RB High (24)	1752.5	18	17.06	0	17.65	0	
		1732.5	18	16.94	0	17.03	0	
		1712.5	18	16.80	0	17.01	0	
	1RB Middle (12)	1752.5	18	17.02	0	17.41	0	
		1732.5	18	16.75	0	17.56	0	
		1712.5	18	16.78	0	17.02	0	
	1RB Low (0)	1752.5	18	16.77	0	17.08	0	
		1732.5	18	16.82	0	17.20	0	
		1712.5	18	16.68	0	17.06	0	
	12RB High (13)	1752.5	18	16.91	0	16.91	0	
		1732.5	18	16.90	0	16.90	0	
		1712.5	18	16.85	0	16.81	0	
	12RB Middle (6)	1752.5	18	16.81	0	16.81	0	
		1732.5	18	16.90	0	16.90	0	
		1712.5	18	16.85	0	16.75	0	
	12RB Low (0)	1752.5	18	16.80	0	16.87	0	
		1732.5	18	16.90	0	16.90	0	
		1712.5	18	16.85	0	16.85	0	
	25RB (0)	1752.5	18	16.80	0	16.80	0	
		1732.5	18	16.90	0	16.90	0	
		1712.5	18	16.85	0	16.80	0	
	10 MHz	1RB High (49)	1750	18	17.01	0	17.67	0
			1732.5	18	16.83	0	17.23	0
			1715	18	17.05	0	17.57	0
1RB Middle (24)		1750	18	16.85	0	17.17	0	
		1732.5	18	16.88	0	17.50	0	
		1715	18	16.93	0	17.11	0	
1RB Low (0)		1750	18	16.85	0	17.44	0	
		1732.5	18	16.85	0	17.25	0	
		1715	18	16.90	0	17.08	0	
25RB High (25)		1750	18	16.84	0	16.84	0	
		1732.5	18	16.92	0	16.92	0	
		1715	18	16.90	0	16.98	0	
25RB Middle (12)		1750	18	16.89	0	16.83	0	
		1732.5	18	16.92	0	16.92	0	
		1715	18	16.89	0	16.89	0	
25RB Low (0)		1750	18	16.95	0	16.95	0	
		1732.5	18	16.92	0	16.92	0	
		1715	18	16.89	0	16.89	0	
50RB (0)		1750	18	16.94	0	16.94	0	
		1732.5	18	16.92	0	16.92	0	
		1715	18	16.89	0	16.89	0	
15 MHz		1RB High (74)	1747.5	18	16.93	0	17.50	0
			1732.5	18	16.99	0	17.32	0
			1717.5	18	16.82	0	17.20	0
	1RB Middle	1747.5	18	16.77	0	17.18	0	
		1732.5	18	17.04	0	17.46	0	

	(37)	1717.5	18	17.07	0	17.08	0	
	1RB Low (0)	1747.5	18	16.79	0	17.38	0	
		1732.5	18	16.98	0	17.55	0	
		1717.5	18	16.78	0	16.88	0	
	36RB High (38)	1747.5	18	16.96	0	16.96	0	
		1732.5	18	17.02	0	17.02	0	
		1717.5	18	16.93	0	16.88	0	
	36RB Middle (19)	1747.5	18	16.95	0	16.95	0	
		1732.5	18	17.02	0	17.02	0	
		1717.5	18	16.87	0	16.91	0	
	36RB Low (0)	1747.5	18	17.04	0	17.04	0	
		1732.5	18	17.01	0	17.05	0	
		1717.5	18	16.97	0	16.97	0	
	75RB (0)	1747.5	18	17.04	0	17.04	0	
		1732.5	18	17.11	0	17.09	0	
		1717.5	18	16.96	0	16.95	0	
	20 MHz	1RB High (99)	1745	18	17.38	0	17.23	0
			1732.5	18	17.14	0	16.85	0
1720			18	17.11	0	16.98	0	
1RB Middle (50)		1745	18	17.15	0	17.03	0	
		1732.5	18	17.12	0	17.00	0	
		1720	18	16.99	0	16.97	0	
1RB Low (0)		1745	18	17.04	0	17.21	0	
		1732.5	18	17.00	0	16.88	0	
		1720	18	16.84	0	16.77	0	
50RB High (50)		1745	18	17.00	0	16.99	0	
		1732.5	18	17.04	0	16.99	0	
		1720	18	16.87	0	16.86	0	
50RB Middle (25)		1745	18	17.03	0	17.16	0	
		1732.5	18	16.99	0	16.99	0	
		1720	18	16.85	0	16.85	0	
50RB Low (0)		1745	18	17.16	0	17.14	0	
		1732.5	18	16.99	0	16.98	0	
		1720	18	16.85	0	16.84	0	
100RB (0)		1745	18	17.14	0	17.09	0	
		1732.5	18	16.98	0	16.97	0	
		1720	18	16.84	0	16.84	0	
Band 30								
Bandwidth (MHz)		RB allocation	Frequency (MHz)	Max. Target Power (dBm)	QPSK		16QAM	
		RB offset (Start RB)			Actual output power (dBm)	MPR	Actual output power (dBm)	MPR
5 MHz		1RB High (24)	2312.5	21	19.83	0	20.09	0
			2310	21	19.84	0	20.11	0
			2307.5	21	19.80	0	19.55	0
	1RB Middle	2312.5	21	19.90	0	20.17	0	
		2310	21	20.19	0	20.20	0	

	(12)	2307.5	21	19.79	0	19.75	0
	1RB Low (0)	2312.5	21	19.88	0	20.06	0
		2310	21	19.88	0	20.17	0
		2307.5	21	19.78	0	19.68	0
	12RB High (13)	2312.5	21	19.98	0	20.13	0
		2310	21	20.01	0	19.89	0
		2307.5	21	20.06	0	19.78	0
	12RB Middle (6)	2312.5	21	19.95	0	19.91	0
		2310	21	20.11	0	20.07	0
		2307.5	21	19.98	0	19.87	0
	12RB Low (0)	2312.5	21	19.98	0	19.85	0
		2310	21	20.07	0	20.06	0
		2307.5	21	20.09	0	20.18	0
	25RB (0)	2312.5	21	20.07	0	20.07	0
		2310	21	19.98	0	20.07	0
2307.5		21	19.99	0	20.17	0	
10 MHz	1RB High (49)	2310	21	20.30	0	20.52	0
	1RB Middle	2310	21	20.40	0	20.64	0
	1RB Low (0)	2310	21	20.20	0	20.56	0
	25RB High (25)	2310	21	20.05	0	20.16	0
	25RB Middle	2310	21	20.32	0	20.06	0
	25RB Low (0)	2310	21	20.10	0	20.23	0
	50RB (0)	2310	21	20.12	0	20.15	0

Low power Sensor ON

Table 11.3-3: The conducted Power for LTE

Band 2								
Bandwidth (MHz)	RB allocation	Frequency (MHz)	Max. Target Power (dBm)	QPSK		16QAM		
	RB offset (Start RB)			Actual output power (dBm)	MPR	Actual output power (dBm)	MPR	
1.4 MHz	1RB High (5)	1909.3	23	22.40	0	22.68	0	
		1880	23	22.09	0	22.50	0	
		1850.7	23	22.55	0	22.80	0	
	1RB Middle (3)	1909.3	23	22.39	0	22.87	0	
		1880	23	22.24	0	22.77	0	
		1850.7	23	22.57	0	22.87	0	
	1RB Low (0)	1909.3	23	22.58	0	22.62	0	
		1880	23	22.36	0	22.45	0	
		1850.7	23	22.47	0	22.55	0	
	3RB High (3)	1909.3	23	22.51	0	22.53	0	
		1880	23	22.34	0	22.34	0	
		1850.7	23	22.52	0	22.25	0	
	3RB Middle (1)	1909.3	23	22.56	0	22.23	0	
		1880	23	22.37	0	22.30	0	
		1850.7	23	22.54	0	22.21	0	
	3RB Low (0)	1909.3	23	22.51	0	22.44	0	
		1880	23	22.13	0	22.31	0	
		1850.7	23	22.45	0	22.28	0	
	6RB (0)	1909.3	23	22.38	0	21.88	0	
		1880	23	22.21	0	21.73	0	
		1850.7	23	22.37	0	21.84	0	
	3 MHz	1RB High (14)	1908.5	23	22.20	0	22.32	0
			1880	23	22.21	0	22.30	0
			1851.5	23	22.31	0	22.33	0
1RB Middle (7)		1908.5	23	22.47	0	22.59	0	
		1880	23	22.36	0	22.73	0	
		1851.5	23	22.37	0	22.81	0	
1RB Low (0)		1908.5	23	22.18	0	21.99	0	
		1880	23	22.22	0	22.74	0	
		1851.5	23	22.33	0	22.42	0	
8RB High (7)		1908.5	23	22.44	0	21.95	0	
		1880	23	22.18	0	21.76	0	
		1851.5	23	22.41	0	22.02	0	
8RB Middle (4)		1908.5	23	22.39	0	22.06	0	
		1880	23	22.20	0	21.86	0	
		1851.5	23	22.36	0	22.02	0	
8RB Low (0)		1908.5	23	22.40	0	21.96	0	
		1880	23	22.34	0	21.77	0	
		1851.5	23	22.31	0	21.96	0	
15RB		1908.5	23	22.41	0	22.09	0	

	(0)	1880	23	22.32	0	21.73	0	
		1851.5	23	22.37	0	21.87	0	
5 MHz	1RB High (24)	1907.5	23	22.38	0	22.67	0	
		1880	23	22.23	0	22.47	0	
		1852.5	23	21.98	0	22.50	0	
	1RB Middle (12)	1907.5	23	22.59	0	22.79	0	
		1880	23	22.38	0	22.42	0	
		1852.5	23	22.50	0	22.69	0	
	1RB Low (0)	1907.5	23	22.53	0	22.75	0	
		1880	23	22.12	0	22.47	0	
		1852.5	23	22.15	0	22.52	0	
	12RB High (13)	1907.5	23	22.34	0	21.89	0	
		1880	23	22.22	0	21.71	0	
		1852.5	23	22.36	0	22.01	0	
	12RB Middle (6)	1907.5	23	22.38	0	21.87	0	
		1880	23	22.31	0	21.82	0	
		1852.5	23	22.45	0	21.85	0	
	12RB Low (0)	1907.5	23	22.35	0	21.76	0	
		1880	23	22.22	0	21.84	0	
		1852.5	23	22.41	0	22.00	0	
	25RB (0)	1907.5	23	22.46	0	22.04	0	
		1880	23	22.27	0	21.88	0	
		1852.5	23	22.42	0	21.92	0	
	10 MHz	1RB High (49)	1905	23	22.42	0	22.75	0
			1880	23	22.34	0	22.78	0
			1855	23	22.60	0	22.72	0
1RB Middle (24)		1905	23	22.85	0	22.78	0	
		1880	23	22.70	0	22.60	0	
		1855	23	22.32	0	22.82	0	
1RB Low (0)		1905	23	22.46	0	22.78	0	
		1880	23	22.34	0	22.61	0	
		1855	23	22.59	0	22.71	0	
25RB High (25)		1905	23	22.44	0	22.21	0	
		1880	23	22.33	0	21.67	0	
		1855	23	22.23	0	21.91	0	
25RB Middle (12)		1905	23	22.45	0	22.09	0	
		1880	23	22.36	0	21.95	0	
		1855	23	22.28	0	21.77	0	
25RB Low (0)		1905	23	22.46	0	21.95	0	
		1880	23	22.34	0	21.92	0	
		1855	23	22.36	0	21.96	0	
50RB (0)		1905	23	22.43	0	21.91	0	
		1880	23	22.31	0	21.68	0	
		1855	23	22.35	0	21.92	0	
15 MHz		1RB High (74)	1902.5	23	22.35	0	22.65	0
			1880	23	22.33	0	22.74	0
			1857.5	23	22.39	0	22.82	0
	1RB	1902.5	23	22.31	0	22.84	0	



	Middle (37)	1880	23	22.39	0	22.81	0	
		1857.5	23	22.44	0	22.75	0	
		1902.5	23	22.27	0	22.48	0	
	1RB Low (0)	1880	23	22.17	0	22.41	0	
		1857.5	23	22.30	0	22.64	0	
		1902.5	23	22.40	0	21.88	0	
	36RB High (38)	1880	23	22.29	0	21.79	0	
		1857.5	23	22.39	0	21.99	0	
		1902.5	23	22.34	0	21.87	0	
	36RB Middle (19)	1880	23	22.27	0	21.68	0	
		1857.5	23	22.31	0	21.77	0	
		1902.5	23	22.37	0	22.04	0	
	36RB Low (0)	1880	23	22.17	0	21.69	0	
		1857.5	23	22.31	0	21.98	0	
		1902.5	23	22.34	0	21.89	0	
	75RB (0)	1880	23	22.28	0	21.68	0	
		1857.5	23	22.34	0	21.94	0	
		1900	23	22.49	0	22.51	0	
	20 MHz	1RB High (99)	1880	23	22.53	0	22.38	0
			1860	23	22.63	0	22.36	0
			1900	23	22.55	0	22.40	0
		1RB Middle (50)	1880	23	22.70	0	22.14	0
			1860	23	22.79	0	22.39	0
			1900	23	22.22	0	22.24	0
		1RB Low (0)	1880	23	22.42	0	22.29	0
			1860	23	22.36	0	22.37	0
			1900	23	22.34	0	21.90	0
50RB High (50)		1880	23	22.32	0	21.69	0	
		1860	23	22.42	0	22.00	0	
		1900	23	22.34	0	21.98	0	
50RB Middle (25)		1880	23	22.31	0	21.84	0	
		1860	23	22.36	0	22.03	0	
		1900	23	22.36	0	21.85	0	
50RB Low (0)		1880	23	22.29	0	21.77	0	
		1860	23	22.35	0	21.84	0	
		1900	23	22.35	0	21.91	0	
100RB (0)		1880	23	22.25	0	21.80	0	
		1860	23	22.33	0	21.90	0	
		Band 4						
Bandwidth (MHz)		RB allocation	Frequency (MHz)	Max. Target Power (dBm)	QPSK		16QAM	
		RB offset (Start RB)			Actual output power (dBm)	MPR	Actual output power (dBm)	MPR
1.4 MHz		1RB High (5)	1754.3	22.5	21.50	0	21.49	0
			1732.5	22.5	21.98	0	21.16	0
			1710.7	22.5	21.86	0	21.74	0
		1RB	1754.3	22.5	21.61	0	21.62	0

	Middle (3)	1732.5	22.5	21.73	0	21.54	0	
		1710.7	22.5	21.92	0	21.09	0	
		1754.3	22.5	21.59	0	21.51	0	
	1RB Low (0)	1732.5	22.5	21.61	0	21.57	0	
		1710.7	22.5	21.89	0	21.25	0	
		1754.3	22.5	21.42	0	21.51	0	
	3RB High (3)	1732.5	22.5	21.52	0	21.66	0	
		1710.7	22.5	21.28	0	21.24	0	
		1754.3	22.5	21.56	0	21.39	0	
	3RB Middle (1)	1732.5	22.5	21.31	0	21.57	0	
		1710.7	22.5	21.30	0	21.19	0	
		1754.3	22.5	21.33	0	21.42	0	
	3RB Low (0)	1732.5	22.5	21.32	0	21.69	0	
		1710.7	22.5	21.32	0	21.06	0	
		1754.3	22.5	21.36	0	21.04	0	
6RB (0)	1732.5	22.5	21.33	0	21.36	0		
	1710.7	22.5	21.25	0	21.28	0		
	1753.5	22.5	21.39	0	21.58	0		
3 MHz	1RB High (14)	1732.5	22.5	21.32	0	21.48	0	
		1711.5	22.5	21.25	0	21.98	0	
		1753.5	22.5	21.65	0	21.95	0	
	1RB Middle (7)	1732.5	22.5	21.31	0	21.88	0	
		1711.5	22.5	21.32	0	21.17	0	
		1753.5	22.5	21.28	0	21.74	0	
	1RB Low (0)	1732.5	22.5	21.34	0	21.59	0	
		1711.5	22.5	21.28	0	21.51	0	
		1753.5	22.5	21.32	0	21.22	0	
	8RB High (7)	1732.5	22.5	21.34	0	21.13	0	
		1711.5	22.5	21.38	0	21.20	0	
		1753.5	22.5	21.44	0	21.45	0	
	8RB Middle (4)	1732.5	22.5	21.34	0	21.15	0	
		1711.5	22.5	21.38	0	20.89	0	
		1753.5	22.5	21.24	0	20.89	0	
	8RB Low (0)	1732.5	22.5	21.40	0	21.03	0	
		1711.5	22.5	21.29	0	21.03	0	
		1753.5	22.5	21.48	0	20.94	0	
	15RB (0)	1732.5	22.5	21.35	0	21.03	0	
		1711.5	22.5	21.32	0	21.03	0	
		1752.5	22.5	21.30	0	21.91	0	
	5 MHz	1RB High (24)	1732.5	22.5	21.17	0	21.58	0
			1712.5	22.5	21.13	0	21.71	0
			1752.5	22.5	21.45	0	21.93	0
1RB Middle (12)		1732.5	22.5	21.53	0	21.67	0	
		1712.5	22.5	21.11	0	21.49	0	
		1752.5	22.5	21.38	0	21.73	0	
1RB Low (0)		1732.5	22.5	21.23	0	21.68	0	
		1712.5	22.5	21.26	0	21.46	0	
		1752.5	22.5	21.53	0	21.00	0	
12RB		1752.5	22.5	21.53	0	21.00	0	

	High (13)	1732.5	22.5	21.36	0	21.17	0	
		1712.5	22.5	21.30	0	21.03	0	
		1752.5	22.5	21.33	0	20.87	0	
	12RB Middle (6)	1732.5	22.5	21.37	0	21.14	0	
		1712.5	22.5	21.32	0	20.96	0	
		1752.5	22.5	21.34	0	21.00	0	
	12RB Low (0)	1732.5	22.5	21.42	0	21.14	0	
		1712.5	22.5	21.32	0	20.80	0	
		1752.5	22.5	21.46	0	21.28	0	
	25RB (0)	1732.5	22.5	21.40	0	21.02	0	
		1712.5	22.5	21.31	0	20.97	0	
		1752.5	22.5	21.31	0	20.97	0	
10 MHz	1RB High (49)	1750	22.5	21.51	0	22.14	0	
		1732.5	22.5	21.33	0	21.87	0	
		1715	22.5	21.51	0	21.77	0	
	1RB Middle (24)	1750	22.5	21.45	0	21.87	0	
		1732.5	22.5	21.63	0	21.64	0	
		1715	22.5	21.55	0	21.82	0	
	1RB Low (0)	1750	22.5	21.23	0	21.92	0	
		1732.5	22.5	21.15	0	21.91	0	
		1715	22.5	21.32	0	21.75	0	
	25RB High (25)	1750	22.5	21.39	0	21.11	0	
		1732.5	22.5	21.34	0	20.86	0	
		1715	22.5	21.40	0	21.02	0	
	25RB Middle (12)	1750	22.5	21.28	0	20.88	0	
		1732.5	22.5	21.35	0	21.00	0	
		1715	22.5	21.31	0	21.09	0	
	25RB Low (0)	1750	22.5	21.27	0	21.04	0	
		1732.5	22.5	21.30	0	20.87	0	
		1715	22.5	21.32	0	21.10	0	
	50RB (0)	1750	22.5	21.30	0	20.86	0	
		1732.5	22.5	21.36	0	21.03	0	
		1715	22.5	21.28	0	21.01	0	
	15 MHz	1RB High (74)	1747.5	22.5	21.47	0	21.69	0
			1732.5	22.5	21.36	0	21.71	0
			1717.5	22.5	21.48	0	21.63	0
		1RB Middle (37)	1747.5	22.5	21.16	0	21.78	0
			1732.5	22.5	21.43	0	21.89	0
			1717.5	22.5	21.29	0	21.62	0
		1RB Low (0)	1747.5	22.5	21.17	0	21.07	0
			1732.5	22.5	21.39	0	22.11	0
			1717.5	22.5	21.24	0	21.55	0
36RB High (38)		1747.5	22.5	21.31	0	21.03	0	
		1732.5	22.5	21.36	0	21.06	0	
		1717.5	22.5	21.50	0	21.16	0	
36RB Middle (19)		1747.5	22.5	21.53	0	20.88	0	
		1732.5	22.5	21.34	0	21.15	0	
		1717.5	22.5	21.37	0	21.00	0	
36RB		1747.5	22.5	21.35	0	20.95	0	



	Low (0)	1732.5	22.5	21.32	0	21.05	0	
		1717.5	22.5	21.30	0	21.03	0	
	75RB (0)	1747.5	22.5	21.36	0	20.96	0	
		1732.5	22.5	21.36	0	21.05	0	
20 MHz	1RB High (99)	1745	22.5	21.71	0	21.45	0	
		1732.5	22.5	21.20	0	21.82	0	
		1720	22.5	21.65	0	21.46	0	
	1RB Middle (50)	1745	22.5	21.46	0	21.28	0	
		1732.5	22.5	21.63	0	21.94	0	
		1720	22.5	21.61	0	21.44	0	
	1RB Low (0)	1745	22.5	21.57	0	21.54	0	
		1732.5	22.5	21.17	0	21.85	0	
		1720	22.5	21.21	0	21.24	0	
	50RB High (50)	1745	22.5	21.38	0	21.13	0	
		1732.5	22.5	21.43	0	21.18	0	
		1720	22.5	21.45	0	21.28	0	
	50RB Middle (25)	1745	22.5	21.42	0	21.06	0	
		1732.5	22.5	21.45	0	21.09	0	
		1720	22.5	21.43	0	21.01	0	
	50RB Low (0)	1745	22.5	21.49	0	21.06	0	
		1732.5	22.5	21.35	0	20.93	0	
		1720	22.5	21.42	0	21.24	0	
	100RB (0)	1745	22.5	21.44	0	21.00	0	
		1732.5	22.5	21.41	0	20.82	0	
		1720	22.5	21.46	0	21.18	0	
	Band 30							
	Bandwidth (MHz)	RB allocation	Frequency (MHz)	Max. Target Power (dBm)	QPSK		16QAM	
		RB offset (Start RB)			Actual output power (dBm)	MPR	Actual output power (dBm)	MPR
5 MHz	1RB High (24)	2312.5	22.5	21.75	0	22.20	0	
		2310	22.5	21.93	0	22.24	0	
		2307.5	22.5	21.71	0	21.51	0	
	1RB Middle (12)	2312.5	22.5	21.87	0	22.14	0	
		2310	22.5	21.76	0	22.15	0	
		2307.5	22.5	21.77	0	21.25	0	
	1RB Low (0)	2312.5	22.5	21.87	0	22.03	0	
		2310	22.5	21.82	0	22.16	0	
		2307.5	22.5	21.87	0	21.53	0	
	12RB High (13)	2312.5	22.5	21.98	0	21.43	0	
		2310	22.5	21.94	0	21.31	0	
		2307.5	22.5	21.96	0	21.35	0	
	12RB Middle (6)	2312.5	22.5	21.95	0	21.36	0	
		2310	22.5	21.91	0	21.36	0	
		2307.5	22.5	21.99	0	21.40	0	
12RB	2312.5	22.5	21.98	0	21.32	0		

	Low (0)	2310	22.5	21.95	0	21.35	0
		2307.5	22.5	21.99	0	21.50	0
	25RB (0)	2312.5	22.5	21.97	0	21.58	0
		2310	22.5	21.96	0	21.47	0
		2307.5	22.5	21.99	0	21.42	0
10 MHz	1RB High (49)	2310	22.5	21.60	0	21.24	0
	1RB Middle (24)	2310	22.5	22.04	0	21.90	0
	1RB Low (0)	2310	22.5	22.07	0	21.69	0
	25RB High (25)	2310	22.5	22.07	0	21.68	0
	25RB Middle (12)	2310	22.5	22.11	0	21.46	0
	25RB Low (0)	2310	22.5	22.13	0	21.45	0
	50RB (0)	2310	22.5	22.09	0	21.41	0

11.4 Wi-Fi and BT Measurement result

The output power of BT antenna is as following:

Condition	GFSK			EDR2M-4_DQPSK			EDR3M-8DPSK		
	Channel 0	Channel 39	Channel 78	Channel 0	Channel 39	Channel 78	Channel 0	Channel 39	Channel 78
Peak Output Power(dBm)									
Hopping OFF	6.38	8.08	7.81	6.33	8.02	7.72	6.62	8.30	8.03
Tune up	7.00	9.00	9.00	7.00	9.00	9.00	7.00	9.00	9.00

The average **normal** conducted power for Wi-Fi is as following:

Tune up:

2.4G:

11b: 18.0 dBm

11g(6Mbps~18Mbps): 18.0 dBm

11g(24Mbps~54Mbps): 16.0 dBm

11n 20M(MCS0~MCS3): 17.0 dBm

11n 20M(MCS4~MCS7): 15.0 dBm

11n 40M(MCS0~MCS3): 16.0 dBm

11n 40M(MCS4~MCS7): 14.0 dBm



5G:

- 11a(6Mbps~24Mbps): 17.0 dBm
- 11a(36Mbps~54Mbps): 16.0 dBm
- 11n 20M(MCS0~MCS3): 17.0 dBm
- 11n 20M(MCS4~MCS7): 16.0 dBm
- 11n 40M(MCS0~MCS3): 16.0 dBm
- 11n 40MMCS4~MCS7): 15.0 dBm

802.11b(dBm)									
Channel\data rate	1Mbps	2Mbps	5.5Mbps	11Mbps					
1(2412MHz)	16.70	/	/	/					
6(2437MHz)	16.99	16.75	16.67	16.25					
11(2462MHz)	16.85	/	/	/					
802.11g(dBm)									
Channel\data rate	6Mbps	9Mbps	12Mbps	18Mbps	24Mbps	36Mbps	48Mbps	54Mbps	
1(2412MHz)	16.32	/	/	/	/	/	/	/	/
6(2437MHz)	16.41	/	/	/	/	/	/	/	/
11(2462MHz)	16.61	16.45	16.38	16.25	15.99	15.69	15.44	15.25	
802.11n(dBm)-20MHz									
Channel\data rate	MCS0	MCS1	MCS2	MCS3	MCS4	MCS5	MCS6	MCS7	
1(2412MHz)	15.30	/	/	/	/	/	/	/	/
6(2437MHz)	15.49	/	/	/	/	/	/	/	/
11(2462MHz)	15.66	15.46	15.31	15.05	14.72	14.45	14.36	14.17	
802.11n(dBm)-40MHz									
Channel\data rate	MCS0	MCS1	MCS2	MCS3	MCS4	MCS5	MCS6	MCS7	
3(2422MHz)	15.02	/	/	/	/	/	/	/	/
6(2437MHz)	14.25	/	/	/	/	/	/	/	/
9(2452MHz)	15.23	14.90	14.52	14.05	13.65	13.06	12.91	12.90	



802.11a(dBm)								
Channel\data rate	6Mbps	9Mbps	12Mbps	18Mbps	24Mbps	36Mbps	48Mbps	54Mbps
36(5180 MHz)	15.86	15.79	15.71	15.55	15.35	15.04	14.66	14.53
40(5200 MHz)	15.41	/	/	/	/	/	/	/
44(5220 MHz)	15.46	/	/	/	/	/	/	/
48(5240 MHz)	15.58	/	/	/	/	/	/	/
52(5260 MHz)	15.53	/	/	/	/	/	/	/
56(5280 MHz)	15.81	/	/	/	/	/	/	/
60(5300 MHz)	15.95	15.87	15.79	15.61	15.45	15.12	14.76	14.61
64(5320 MHz)	15.87	/	/	/	/	/	/	/
100(5500 MHz)	15.81	/	/	/	/	/	/	/
104(5520 MHz)	15.48	/	/	/	/	/	/	/
108(5540 MHz)	15.26	/	/	/	/	/	/	/
112(5560 MHz)	15.04	/	/	/	/	/	/	/
116(5580 MHz)	15.11	/	/	/	/	/	/	/
120(5600 MHz)	15.31	/	/	/	/	/	/	/
124(5620 MHz)	15.54	/	/	/	/	/	/	/
128(5640 MHz)	15.73	/	/	/	/	/	/	/
132(5660 MHz)	15.78	/	/	/	/	/	/	/
136(5680 MHz)	15.87	15.75	15.65	15.47	15.27	14.91	14.57	14.45
140(5700 MHz)	15.45	/	/	/	/	/	/	/
144(5720 MHz)	15.26	/	/	/	/	/	/	/
149(5745 MHz)	15.04	/	/	/	/	/	/	/
153(5765 MHz)	15.31	/	/	/	/	/	/	/
157(5785 MHz)	15.51	/	/	/	/	/	/	/
161(5805 MHz)	15.73	/	/	/	/	/	/	/
165(5825 MHz)	15.99	15.88	15.79	15.62	15.41	15.06	14.72	14.61
802.11n(dBm)-20MHz								
Channel\data rate	MCS0	MCS1	MCS2	MCS3	MCS4	MCS5	MCS6	MCS7
36(5180 MHz)	16.04	15.87	15.69	15.48	15.15	14.81	14.66	14.51
40(5200 MHz)	15.91	/	/	/	/	/	/	/
44(5220 MHz)	15.76	/	/	/	/	/	/	/
48(5240 MHz)	15.96	/	/	/	/	/	/	/
52(5260 MHz)	15.75	/	/	/	/	/	/	/
56(5280 MHz)	15.95	/	/	/	/	/	/	/
60(5300 MHz)	15.99	15.86	15.75	15.57	15.38	15.07	14.76	14.57
64(5320 MHz)	15.97	/	/	/	/	/	/	/
100(5500 MHz)	15.86	/	/	/	/	/	/	/
104(5520 MHz)	15.43	/	/	/	/	/	/	/
108(5540 MHz)	15.24	/	/	/	/	/	/	/
112(5560 MHz)	15.13	/	/	/	/	/	/	/
116(5580 MHz)	15.19	/	/	/	/	/	/	/
120(5600 MHz)	15.38	/	/	/	/	/	/	/
124(5620 MHz)	15.61	/	/	/	/	/	/	/
128(5640 MHz)	15.79	/	/	/	/	/	/	/
132(5660 MHz)	15.89	/	/	/	/	/	/	/
136(5680 MHz)	15.98	15.74	15.62	15.43	15.23	14.83	14.47	14.32
140(5700 MHz)	15.67	/	/	/	/	/	/	/
144(5720 MHz)	15.35	/	/	/	/	/	/	/
149(5745 MHz)	15.04	/	/	/	/	/	/	/
153(5765 MHz)	15.24	/	/	/	/	/	/	/
157(5785 MHz)	15.45	/	/	/	/	/	/	/
161(5805 MHz)	15.75	/	/	/	/	/	/	/
165(5825 MHz)	15.92	15.67	15.49	15.28	14.93	14.55	14.40	14.25



The average **Low** conducted power for Wi-Fi is as following:

Tune up:

2.4G:

- 11b: 13.0 dBm
- 11g(6Mbps~24Mbps): 13.0 dBm
- 11g(36Mbps~54Mbps): 12.0 dBm
- 11n 20M(MCS0~MCS3): 12.0 dBm
- 11n 20M(MCS4~MCS7): 10.0 dBm
- 11n 40M(MCS0~MCS3): 11.0 dBm
- 11n 40M(MCS4~MCS7): 9.0 dBm

5G:

- 11a(6Mbps~24Mbps): 12.0 dBm
- 11a(36Mbps~54Mbps): 11.0 dBm
- 11n 20M(MCS0~MCS3): 12.0 dBm
- 11n 20M(MCS4~MCS7): 11.0 dBm
- 11n 40M(MCS0~MCS3): 11.0 dBm
- 11n 40MMCS4~MCS7): 10.0 dBm

FCC									
802.11b(dBm)									
Channel\data rate	1Mbps	2Mbps	5.5Mbps	11Mbps					
1(2412MHz)	11.46	/	/	/					
6(2437MHz)	11.88	11.61	11.37	11.08					
11(2462MHz)	11.64	/	/	/					
802.11g(dBm)									
Channel\data rate	6Mbps	9Mbps	12Mbps	18Mbps	24Mbps	36Mbps	48Mbps	54Mbps	
1(2412MHz)	11.51	/	/	/	/	/	/	/	
6(2437MHz)	11.82	11.71	11.64	11.46	11.25	10.90	10.64	10.51	
11(2462MHz)	11.57	/	/	/	/	/	/	/	
802.11n(dBm)-20MHz									
Channel\data rate	MCS0	MCS1	MCS2	MCS3	MCS4	MCS5	MCS6	MCS7	
1(2412MHz)	10.44	/	/	/	/	/	/	/	
6(2437MHz)	10.43	/	/	/	/	/	/	/	
11(2462MHz)	10.70	10.59	10.36	10.17	9.87	9.53	9.41	9.31	
802.11n(dBm)-40MHz									
Channel\data rate	MCS0	MCS1	MCS2	MCS3	MCS4	MCS5	MCS6	MCS7	
3(2422MHz)	10.03	/	/	/	/	/	/	/	
6(2437MHz)	9.12	/	/	/	/	/	/	/	
9(2452MHz)	10.14	9.93	9.65	9.08	8.68	8.30	7.99	7.84	



802.11a(dBm)								
Channel\data rate	6Mbps	9Mbps	12Mbps	18Mbps	24Mbps	36Mbps	48Mbps	54Mbps
36(5180 MHz)	11.17	11.06	10.96	10.75	10.56	10.17	9.78	9.69
40(5200 MHz)	11.00	/	/	/	/	/	/	/
44(5220 MHz)	10.85	/	/	/	/	/	/	/
48(5240 MHz)	11.15	/	/	/	/	/	/	/
52(5260 MHz)	10.78	/	/	/	/	/	/	/
56(5280 MHz)	10.83	/	/	/	/	/	/	/
60(5300 MHz)	10.88	/	/	/	/	/	/	/
64(5320 MHz)	11.13	11.01	10.94	10.74	10.53	10.19	9.85	9.64
100(5500 MHz)	10.98	/	/	/	/	/	/	/
104(5520 MHz)	10.24	/	/	/	/	/	/	/
108(5540 MHz)	10.18	/	/	/	/	/	/	/
112(5560 MHz)	10.06	/	/	/	/	/	/	/
116(5580 MHz)	10.05	/	/	/	/	/	/	/
120(5600 MHz)	10.38	/	/	/	/	/	/	/
124(5620 MHz)	10.61	/	/	/	/	/	/	/
128(5640 MHz)	10.92	/	/	/	/	/	/	/
132(5660 MHz)	10.95	/	/	/	/	/	/	/
136(5680 MHz)	10.97	10.85	10.72	10.53	10.30	9.97	9.63	9.48
140(5700 MHz)	10.88	/	/	/	/	/	/	/
144(5720 MHz)	10.31	/	/	/	/	/	/	/
149(5745 MHz)	10.29	/	/	/	/	/	/	/
153(5765 MHz)	10.48	/	/	/	/	/	/	/
157(5785 MHz)	10.42	/	/	/	/	/	/	/
161(5805 MHz)	10.81	/	/	/	/	/	/	/
165(5825 MHz)	11.06	10.95	10.87	10.66	10.44	10.16	9.76	9.64
802.11n(dBm)-20MHz								
Channel\data rate	MCS0	MCS1	MCS2	MCS3	MCS4	MCS5	MCS6	MCS7
36(5180 MHz)	11.27	10.92	10.69	10.45	10.13	9.81	9.62	9.52
40(5200 MHz)	11.23	/	/	/	/	/	/	/
44(5220 MHz)	11.18	/	/	/	/	/	/	/
48(5240 MHz)	11.17	/	/	/	/	/	/	/
52(5260 MHz)	10.73	/	/	/	/	/	/	/
56(5280 MHz)	10.95	/	/	/	/	/	/	/
60(5300 MHz)	11.11	/	/	/	/	/	/	/
64(5320 MHz)	11.37	10.89	10.68	10.46	10.05	9.68	9.55	9.43
100(5500 MHz)	11.01	/	/	/	/	/	/	/
104(5520 MHz)	10.30	/	/	/	/	/	/	/
108(5540 MHz)	10.27	/	/	/	/	/	/	/
112(5560 MHz)	10.08	/	/	/	/	/	/	/
116(5580 MHz)	10.07	/	/	/	/	/	/	/
120(5600 MHz)	10.38	/	/	/	/	/	/	/
124(5620 MHz)	10.68	/	/	/	/	/	/	/
128(5640 MHz)	10.98	/	/	/	/	/	/	/
132(5660 MHz)	11.02	/	/	/	/	/	/	/
136(5680 MHz)	11.10	10.82	10.68	10.41	10.08	9.74	9.54	9.41
140(5700 MHz)	10.86	/	/	/	/	/	/	/
144(5720 MHz)	10.47	/	/	/	/	/	/	/
149(5745 MHz)	10.23	/	/	/	/	/	/	/
153(5765 MHz)	10.37	/	/	/	/	/	/	/
157(5785 MHz)	10.61	/	/	/	/	/	/	/
161(5805 MHz)	10.73	/	/	/	/	/	/	/
165(5825 MHz)	11.02	10.83	10.59	10.40	10.04	9.73	9.57	9.46

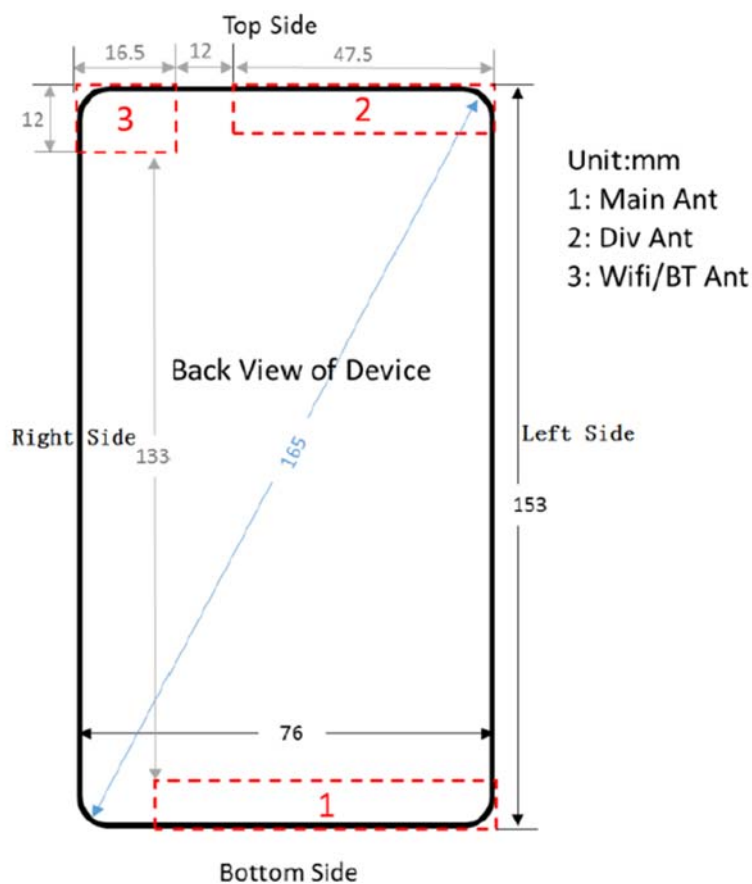
12 Simultaneous TX SAR Considerations

12.1 Introduction

The following procedures adopted from “FCC SAR Considerations for Cell Phones with Multiple Transmitters” are applicable to handsets with built-in unlicensed transmitters such as 802.11 a/b/g and Bluetooth devices which may simultaneously transmit with the licensed transmitter.

For this device, the BT and Wi-Fi can transmit simultaneous with other transmitters.

12.2 Transmit Antenna Separation Distances



Picture 12.1 Antenna Locations

12.3 SAR Measurement Positions

According to the KDB941225 D06 Hot Spot SAR v01, the edges with less than 2.5 cm distance to the antennas need to be tested for SAR.

SAR measurement positions						
Mode	Front	Rear	Left edge	Right edge	Top edge	Bottom edge
Primary antenna	Yes	Yes	Yes	Yes	No	Yes
WLAN	Yes	Yes	No	Yes	Yes	No

12.4 Standalone SAR Test Exclusion Considerations

Standalone 1-g head or body SAR evaluation by measurement or numerical simulation is not required when the corresponding SAR Exclusion Threshold condition, listed below, is satisfied. The 1-g SAR test exclusion threshold for 100 MHz to 6 GHz at test separation distances ≤ 50 mm are determined by:

$$\left[\frac{\text{max. power of channel, including tune-up tolerance, mW}}{\text{min. test separation distance, mm}} \right] \cdot \sqrt{f(\text{GHz})} \leq 3.0$$
 for 1-g SAR, where

- $f(\text{GHz})$ is the RF channel transmit frequency in GHz
- Power and distance are rounded to the nearest mW and mm before calculation
- The result is rounded to one decimal place for comparison

Table 12.1: Standalone SAR test exclusion considerations

Band/Mode	F(GHz)	Position	SAR test exclusion threshold(mW)	RF output power		SAR test exclusion
				dBm	mW	
Bluetooth	2.441	Head	9.60	9	7.94	Yes
		Body	19.20	9	7.94	Yes
2.4GHz WLAN	2.45	Head	9.58	18	63.10	No
		Body	19.17	18	63.10	No
WLAN 5GHz	5.2	Head	6.58	17	50.12	No
		Body	13.16	17	50.12	No
	5.3	Head	6.52	17	50.12	No
		Body	13.03	17	50.12	No
	5.6	Head	6.34	17	50.12	No
		Body	12.68	17	50.12	No
	5.8	Head	6.23	17	50.12	No
		Body	12.46	17	50.12	No

13 Evaluation of Simultaneous

Table 13.1: The sum of reported SAR values for main antenna and WiFi

	Position	Main antenna	WiFi	Sum
Highest reported SAR value for Head	Left hand, Cheek	0.75	0.83	1.58
Highest reported SAR value for Body 10mm	Front	0.72	0.46	1.18
	Bottom	0.73	/	0.73
Highest reported SAR value for Body 15mm	Front	1.28	0.17	1.45

Note: we have evaluated and chose the highest value of WiFi 2.4G and 5G in the above table

Table 13.2: The sum of reported SAR values for main antenna and BT

	Position	Main antenna	BT	Sum
Maximum reported SAR value for Head	Left hand, Cheek	0.75	0.33	1.08
Maximum reported SAR value for Body 10mm	Front	0.72	0.17	0.89
	Bottom	0.80	/	0.80
Maximum reported SAR value for Body 15mm	Front	1.28	0.04	1.32

[1] - Estimated SAR for Bluetooth (see the table 13.3)

Table 13.3: Estimated SAR for Bluetooth

Mode/Band	F (GHz)	Position	Distance (mm)	Upper limit of power *		Estimated _{1g} (W/kg)
				dBm	mW	
Bluetooth	2.441	Head	5	9	7.94	0.33
Bluetooth	2.441	Body	10	9	7.94	0.17
Bluetooth	2.441	Body	15	9	7.94	0.04

* - Maximum possible output power declared by manufacturer

When standalone SAR test exclusion applies to an antenna that transmits simultaneously with other antennas, the standalone SAR must be estimated according to following to determine simultaneous transmission SAR test exclusion:

(max. power of channel, including tune-up tolerance, mW)/(min. test separation distance,mm)·[√f(GHz)/x] W/kg for test separation distances ≤ 50 mm;
where x = 7.5 for 1-g SAR.

When the minimum test separation distance is < 5 mm, a distance of 5 mm is applied to determine SAR test exclusion

Conclusion:

According to the above tables, the sum of reported SAR values is<1.6W/kg. So the simultaneous transmission SAR with volume scans is not required.

14 SAR Test Result

It is determined by user manual for the distance between the EUT and the phantom bottom.

The distance is 10 mm and just applied to the condition of body worn accessory.

It is performed for all SAR measurements with area scan based 1-g SAR estimation (Fast SAR). A zoom scan measurement is added when the estimated 1-gSAR is the highest measured SAR in each exposure configuration, wireless mode and frequency band combination or more than 1.2W/kg.

The calculated SAR is obtained by the following formula:

$$\text{Reported SAR} = \text{Measured SAR} \times 10^{(P_{\text{Target}} - P_{\text{Measured}})/10}$$

Where P_{Target} is the power of manufacturing upper limit;

P_{Measured} is the measured power in chapter 11.

Table 14.1: Duty Cycle

Mode	Duty Cycle
Speech for GSM850& GSM1900	1:8.3
GPRS&EGPRS for GSM850& GSM1900	1:4
WCDMA<E FDD	1:1

We'll perform the head measurement in all bands with the primary battery depending on the evaluation of multi-batteries and retest on highest value point with other batteries. Then, repeat the measurement in the Body test.

Table 14.2: The evaluation of multi-batteries for Head Test

Frequency		Mode/Band	Side	Test Position	Battery Type	SAR(1g)	Power Drift(dB)
MHz	Ch.					(W/kg)	
836.6	190	GSM 850	Left	Touch	HB406689ECW Desay Battery Co., Ltd	0.221	0.01
836.6	190	GSM 850	Left	Touch	HB406689ECW Scud (Fujian) Electronics Co.,Ltd	0.226	0.06

Note: According to the values in the above table, the battery, HB406689ECW Scud (Fujian) Electronics Co.,Ltd, is the primary battery.

We'll perform the head measurement with this battery and retest on highest value point with others.

Table 14.3: The evaluation of multi-batteries for Body Test

Frequency		Mode/Band	Test Position	Spacing (mm)	Battery Type	SAR(1g)	Power Drift(dB)
MHz	Ch.					(W/kg)	
836.6	190	GSM 850	Rear	10	HB406689ECW Desay Battery Co., Ltd	0.311	-0.08
836.6	190	GSM 850	Rear	10	HB406689ECW Scud (Fujian) Electronics Co.,Ltd	0.315	0.11

Note: According to the values in the above table, the battery, HB406689ECW Scud (Fujian) Electronics Co.,Ltd, is the primary battery.

We'll perform the body measurement with this battery and retest on highest value point with others.

Note:

B1: The battery of CAB1500074C1 Scud (Fujian) Electronics Co.,Ltd

B2: The battery of CAB1500071C7 Desay Battery Co., Ltd

14.1 SAR results for Fast SAR

Table 14.1-1: SAR Values (GSM 850 MHz Band - Head)

Frequency		Side	Test Position	Figure No./Note	Conducted Power (dBm)	Max. tune-up Power (dBm)	Measured SAR(10g) (W/kg)	Reported SAR(10g) (W/kg)	Measured SAR(1g) (W/kg)	Reported SAR(1g) (W/kg)	Power Drift (dB)
Ch.	MHz										
190	836.6	L	Cheek	/	31.92	33.5	0.184	0.26	0.231	0.33	0.05
190	836.6	L	Tilt	/	31.92	33.5	0.126	0.18	0.158	0.23	-0.01
251	848.8	R	Cheek	Fig.1	31.71	33.5	0.212	0.32	0.276	0.42	0.08
190	836.6	R	Cheek	/	31.92	33.5	0.203	0.29	0.263	0.38	-0.03
128	824.2	R	Cheek	/	31.76	33.5	0.201	0.30	0.262	0.39	-0.02
190	836.6	R	Tilt	/	31.92	33.5	0.128	0.18	0.161	0.23	0.06
251	848.8	R	Cheek	B2	31.71	33.5	0.194	0.29	0.253	0.38	-0.02

Table 14.1-2: SAR Values (GSM 850 MHz Band - Body)

Frequency		Mode (number of timeslots)	Test Position	Figure No./Note	Conducted Power (dBm)	Max. tune-up Power (dBm)	Measured SAR(10g) (W/kg)	Reported SAR(10g) (W/kg)	Measured SAR(1g) (W/kg)	Reported SAR(1g) (W/kg)	Power Drift (dB)
Ch.	MHz										
251	848.8	GPRS (2)	Front	/	30.03	31	0.230	0.29	0.302	0.38	0.09
190	836.6	GPRS (2)	Front	Fig.2	29.91	31	0.263	0.34	0.334	0.43	-0.01
128	824.2	GPRS (2)	Front	/	29.98	31	0.259	0.33	0.330	0.42	0.14
190	836.6	GPRS (2)	Rear	/	29.91	31	0.248	0.32	0.325	0.42	0.06
190	836.6	GPRS (2)	Left	/	29.91	31	0.146	0.19	0.214	0.28	0.11
190	836.6	GPRS (2)	Right	/	29.91	31	0.202	0.26	0.281	0.36	0.04
190	836.6	GPRS (2)	Bottom	/	29.91	31	0.030	0.04	0.056	0.07	0.18
190	836.6	EGPRS (2)	Front	/	29.9	31	0.258	0.33	0.331	0.43	0.08
190	836.6	GPRS (2)	Front	B2	29.91	31	0.255	0.33	0.326	0.42	0.02

Note: The distance between the EUT and the phantom bottom is 10mm.

Table 14.1-3: SAR Values (GSM 850 MHz Band - Body)

Frequency		Mode (number of timeslots)	Test Position	Figure No./Note	Conducted Power (dBm)	Max. tune-up Power (dBm)	Measured SAR(10g) (W/kg)	Reported SAR(10g) (W/kg)	Measured SAR(1g) (W/kg)	Reported SAR(1g) (W/kg)	Power Drift (dB)
Ch.	MHz										
190	836.6	GPRS (2)	Front	/	29.91	31	0.182	0.23	0.243	0.31	0.08
251	848.8	GPRS (2)	Rear	/	30.03	31	0.205	0.26	0.273	0.34	0.14
190	836.6	GPRS (2)	Rear	/	29.91	31	0.211	0.27	0.279	0.36	0.05
128	824.2	GPRS (2)	Rear	Fig.3	29.98	31	0.221	0.28	0.285	0.36	0.04
128	824.2	EGPRS (2)	Rear	/	29.97	31	0.206	0.26	0.271	0.34	0.02
128	824.2	GPRS (2)	Rear	B2	29.98	31	0.209	0.26	0.278	0.35	0.11

Note: The distance between the EUT and the phantom bottom is 15mm.

Table 14.1-4: SAR Values (GSM 1900 MHz Band - Head)

Ambient Temperature: 22.9°C Liquid Temperature: 22.5°C											
Frequency		Side	Test Position	Figure No./Note	Conducted Power (dBm)	Max. tune-up Power (dBm)	Measured SAR(10g) (W/kg)	Reported SAR(10g) (W/kg)	Measured SAR(1g) (W/kg)	Reported SAR(1g) (W/kg)	Power Drift (dB)
Ch.	MHz										
810	1909.8	L	Cheek	/	29.67	30.5	0.154	0.19	0.258	0.31	0.04
661	1880	L	Cheek	Fig.4	29.6	30.5	0.191	0.23	0.302	0.37	0.03
512	1850.2	L	Cheek	/	29.61	30.5	0.162	0.20	0.271	0.33	0.12
661	1880	L	Tilt	/	29.6	30.5	0.069	0.08	0.107	0.13	-0.09
661	1880	R	Cheek	/	29.6	30.5	0.105	0.13	0.160	0.20	0.03
661	1880	R	Tilt	/	29.6	30.5	0.063	0.08	0.098	0.12	0.01
661	1880	L	Cheek	B2	29.6	30.5	0.176	0.22	0.297	0.37	0.19

Table 14.1-5: SAR Values (GSM 1900 MHz Band - Body)

Ambient Temperature: 22.9°C Liquid Temperature: 22.5°C											
Frequency		Mode (number of timeslots)	Test Position	Figure No./Note	Conducted Power (dBm)	Max. tune-up Power (dBm)	Measured SAR(10g) (W/kg)	Reported SAR(10g) (W/kg)	Measured SAR(1g) (W/kg)	Reported SAR(1g) (W/kg)	Power Drift (dB)
Ch.	MHz										
810	1909.8	GPRS (2)	Front	/	28.11	28.5	0.217	0.24	0.409	0.45	0.11
661	1880	GPRS (2)	Front	/	27.92	28.5	0.268	0.31	0.545	0.62	0.04
512	1850.2	GPRS (2)	Front	Fig.5	27.7	28.5	0.280	0.34	0.595	0.72	0.09
661	1880	GPRS (2)	Rear	/	27.92	28.5	0.258	0.29	0.524	0.60	0.08
661	1880	GPRS (2)	Left	/	27.92	28.5	0.207	0.24	0.366	0.42	-0.04
661	1880	GPRS (2)	Right	/	27.92	28.5	0.051	0.06	0.093	0.11	0.07
661	1880	GPRS (2)	Bottom	/	27.92	28.5	0.210	0.24	0.477	0.55	0.12
512	1850.2	EGPRS (2)	Front	/	27.71	28.5	0.278	0.33	0.592	0.71	0.06
512	1850.2	GPRS (2)	Front	B2	27.7	28.5	0.274	0.33	0.588	0.71	0.09

Note1: The distance between the EUT and the phantom bottom is 10mm.

Table 14.1-6: SAR Values (GSM 1900 MHz Band - Body)

Ambient Temperature: 22.9°C Liquid Temperature: 22.5°C											
Frequency		Mode (number of timeslots)	Test Position	Figure No./Note	Conducted Power (dBm)	Max. tune-up Power (dBm)	Measured SAR(10g) (W/kg)	Reported SAR(10g) (W/kg)	Measured SAR(1g) (W/kg)	Reported SAR(1g) (W/kg)	Power Drift (dB)
Ch.	MHz										
661	1880	GPRS (2)	Front	/	27.92	28.5	0.183	0.21	0.368	0.42	0.10
810	1909.8	GPRS (2)	Front	/	28.11	28.5	0.172	0.19	0.323	0.35	0.08
661	1880	GPRS (2)	Front	Fig.6	27.92	28.5	0.195	0.22	0.383	0.44	-0.05
512	1850.2	GPRS (2)	Rear	/	27.7	28.5	0.177	0.21	0.362	0.44	0.14
661	1880	EGPRS (2)	Front	/	27.87	28.5	0.187	0.22	0.380	0.44	0.05
661	1880	GPRS (2)	Front	B2	27.92	28.5	0.189	0.22	0.377	0.43	0.02

Note1: The distance between the EUT and the phantom bottom is 15mm.

Table 14.1-7: SAR Values (WCDMA 850 MHz Band - Head)

Frequency		Side	Test Position	Figure No./Note	Conducted Power (dBm)	Max. tune-up Power (dBm)	Measured SAR(10g) (W/kg)	Reported SAR(10g) (W/kg)	Measured SAR(1g) (W/kg)	Reported SAR(1g) (W/kg)	Power Drift (dB)
Ch.	MHz										
Ambient Temperature: 22.9°C Liquid Temperature: 22.5°C											
4233	846.6	L	Cheek	/	23.9	24.5	0.146	0.17	0.193	0.22	0.04
4182	836.4	L	Cheek	Fig.7	24.01	24.5	0.153	0.17	0.200	0.22	0.11
4132	826.4	L	Cheek	/	23.97	24.5	0.138	0.16	0.181	0.20	-0.01
4182	836.4	L	Tilt	/	24.01	24.5	0.121	0.13	0.181	0.20	-0.08
4182	836.4	R	Cheek	/	24.01	24.5	0.146	0.16	0.193	0.22	0.03
4182	836.4	R	Tilt	/	24.01	24.5	0.096	0.11	0.126	0.14	0.02
4182	836.4	L	Cheek	B2	24.01	24.5	0.138	0.15	0.180	0.20	-0.01

Table 14.1-8: SAR Values (WCDMA 850 MHz Band - Body)

Frequency		Test Position	Figure No./Note	Conducted Power (dBm)	Max. tune-up Power (dBm)	Measured SAR(10g) (W/kg)	Reported SAR(10g) (W/kg)	Measured SAR(1g) (W/kg)	Reported SAR(1g) (W/kg)	Power Drift (dB)
Ch.	MHz									
Ambient Temperature: 22.9°C Liquid Temperature: 22.5°C										
4182	836.4	Front	/	24.01	24.5	0.283	0.32	0.366	0.41	0.09
4233	846.6	Rear	Fig.8	23.9	24.5	0.331	0.38	0.424	0.49	-0.10
4182	836.4	Rear	/	24.01	24.5	0.308	0.34	0.398	0.45	0.14
4132	826.4	Rear	/	23.97	24.5	0.307	0.35	0.391	0.44	0.06
4182	836.4	Left	/	24.01	24.5	0.192	0.21	0.280	0.31	-0.11
4182	836.4	Right	/	24.01	24.5	0.241	0.27	0.357	0.40	0.05
4182	836.4	Bottom	/	24.01	24.5	0.042	0.05	0.079	0.09	-0.08
4233	846.6	Rear	B2	24.01	24.5	0.302	0.34	0.387	0.43	0.11

Note1: The distance between the EUT and the phantom bottom is 10mm.

Table 14.1-9: SAR Values (WCDMA 850 MHz Band - Body)

Frequency		Test Position	Figure No./Note	Conducted Power (dBm)	Max. tune-up Power (dBm)	Measured SAR(10g) (W/kg)	Reported SAR(10g) (W/kg)	Measured SAR(1g) (W/kg)	Reported SAR(1g) (W/kg)	Power Drift (dB)
Ch.	MHz									
Ambient Temperature: 22.9°C Liquid Temperature: 22.5°C										
4182	836.4	Front	/	24.01	24.5	0.186	0.21	0.242	0.27	0.08
4233	846.6	Rear	Fig.9	23.9	24.5	0.209	0.24	0.272	0.31	0.00
4182	836.4	Rear	/	24.01	24.5	0.198	0.22	0.256	0.29	0.05
4132	826.4	Rear	/	23.97	24.5	0.181	0.20	0.235	0.27	0.12
4233	846.6	Rear	B2	23.9	24.5	0.201	0.23	0.262	0.30	0.04

Note1: The distance between the EUT and the phantom bottom is 15mm.

Table 14.1-10: SAR Values (WCDMA 1700 MHz Band - Head)

Frequency		Side	Test Position	Figure No./Note	Conducted Power (dBm)	Max. tune-up Power (dBm)	Measured SAR(10g) (W/kg)	Reported SAR(10g) (W/kg)	Measured SAR(1g) (W/kg)	Reported SAR(1g) (W/kg)	Power Drift (dB)
Ch.	MHz										
Ambient Temperature: 22.9°C Liquid Temperature: 22.5°C											
1738	1752.6	L	Cheek	Fig.10	23.69	24	0.311	0.33	0.479	0.51	0.09
1637	1732.4	L	Cheek	/	23.78	24	0.248	0.26	0.423	0.44	0.03
1537	1712.4	L	Cheek	/	23.7	24	0.155	0.17	0.266	0.29	0.18
1637	1732.4	L	Tilt	/	23.78	24	0.082	0.09	0.134	0.14	-0.08
1637	1732.4	R	Cheek	/	23.78	24	0.136	0.14	0.211	0.22	0.01
1637	1732.4	R	Tilt	/	23.78	24	0.063	0.07	0.104	0.11	-0.05
1738	1752.6	L	Cheek	B2	23.69	24	0.255	0.27	0.448	0.48	0.05

Table 14.1-11: SAR Values (WCDMA 1700 MHz Band - Body) AP ON

Frequency		Test Position	Figure No./Note	Conducted Power (dBm)	Max. tune-up Power (dBm)	Measured SAR(10g) (W/kg)	Reported SAR(10g) (W/kg)	Measured SAR(1g) (W/kg)	Reported SAR(1g) (W/kg)	Power Drift (dB)
Ch.	MHz									
Ambient Temperature: 22.9°C Liquid Temperature: 22.5°C										
1637	1732.5	Front	/	16.64	18	0.216	0.30	0.425	0.58	0.11
1637	1732.5	Rear	/	16.64	18	0.142	0.19	0.257	0.35	0.07
1637	1732.5	Left	/	16.64	18	0.048	0.07	0.084	0.11	0.05
1637	1732.5	Right	/	16.64	18	0.005	0.01	0.009	0.01	0.01
1738	1752.6	Bottom	Fig.11	16.68	18	0.320	0.43	0.593	0.80	-0.05
1637	1732.5	Bottom	/	16.64	18	0.305	0.42	0.566	0.77	0.01
1537	1712.4	Bottom	/	16.5	18	0.224	0.32	0.436	0.62	-0.02
1738	1752.6	Bottom	B2	20.07	21	0.268	0.33	0.516	0.64	-0.06
1738	1752.6	Front	D	21.08	22.5	2.32	3.22	5.69	7.89	0.06
1637	1732.5	Rear	D	21.07	22.5	2.31	3.21	5.29	7.35	0.08
1738	1752.6	Bottom	D	21.08	22.5	1.70	2.36	4.14	5.74	-0.13

Note1: The distance between the EUT and the phantom bottom is 10mm.

D: The distance between the EUT and the phantom bottom is 0mm. Test with Sensor ON Low Power.

Table 14.1-12: SAR Values (WCDMA 1700 MHz Band - Body) AP OFF

Ambient Temperature: 22.9°C						Liquid Temperature: 22.5°C				
Frequency		Test Position	Figure No./Note	Conducted Power (dBm)	Max. tune-up Power (dBm)	Measured SAR(10g) (W/kg)	Reported SAR(10g) (W/kg)	Measured SAR(1g) (W/kg)	Reported SAR(1g) (W/kg)	Power Drift (dB)
Ch.	MHz									
1738	1752.6	Front	Fig.12	23.69	24	0.657	0.71	1.19	1.28	0.00
1637	1732.5	Front	/	23.78	24	0.648	0.68	1.17	1.23	-0.08
1537	1712.4	Front	/	23.7	24	0.534	0.57	0.959	1.03	0.01
1738	1752.6	Rear	/	23.69	24	0.494	0.53	0.868	0.93	-0.05
1637	1732.5	Rear	/	23.78	24	0.486	0.51	0.856	0.90	0.07
1537	1712.4	Rear	/	23.7	24	0.410	0.44	0.724	0.78	0.11
1738	1752.6	Front	B2	23.69	24	0.650	0.70	1.14	1.22	0.13

Note1: The distance between the EUT and the phantom bottom is 15mm.

Table 14.1-13: SAR Values (WCDMA 1900 MHz Band - Head)

Ambient Temperature: 22.9°C						Liquid Temperature: 22.5°C					
Frequency		Side	Test Position	Figure No./Note	Conducted Power (dBm)	Max. tune-up Power (dBm)	Measured SAR(10g) (W/kg)	Reported SAR(10g) (W/kg)	Measured SAR(1g) (W/kg)	Reported SAR(1g) (W/kg)	Power Drift (dB)
Ch.	MHz										
9938	1907.6	L	Cheek	/	23.46	24	0.278	0.31	0.438	0.50	0.07
9800	1880	L	Cheek	/	23.51	24	0.233	0.26	0.367	0.41	0.12
9662	1852.4	L	Cheek	/	23.58	24	0.324	0.36	0.508	0.56	0.06
9800	1880	L	Tilt	Fig.13	23.51	24	0.067	0.08	0.098	0.11	0.06
9800	1880	R	Cheek	/	23.51	24	0.160	0.18	0.223	0.25	0.04
9800	1880	R	Tilt	/	23.51	24	0.076	0.09	0.103	0.12	-0.09
9662	1852.4	L	Cheek	B2	23.58	24	0.310	0.34	0.480	0.53	0.03

Table 14.1-14: SAR Values (WCDMA 1900 MHz Band - Body) AP ON

Ambient Temperature: 22.9°C						Liquid Temperature: 22.5°C				
Frequency		Test Position	Figure No./Note	Conducted Power (dBm)	Max. tune-up Power (dBm)	Measured SAR(10g) (W/kg)	Reported SAR(10g) (W/kg)	Measured SAR(1g) (W/kg)	Reported SAR(1g) (W/kg)	Power Drift (dB)
Ch.	MHz									
9938	1907.6	Front	/	19.48	21	0.147	0.21	0.253	0.36	0.09
9800	1880	Front	/	19.54	21	0.185	0.26	0.347	0.49	0.14
9662	1852.4	Front	Fig.14	19.66	21	0.225	0.31	0.435	0.59	-0.07
9800	1880	Rear	/	19.54	21	0.167	0.23	0.308	0.43	0.05
9800	1880	Left	/	19.54	21	0.163	0.23	0.207	0.29	0.11
9800	1880	Right	/	19.54	21	0.029	0.04	0.049	0.07	0.08
9800	1880	Bottom	/	19.54	21	0.13	0.18	0.263	0.37	0.12
9662	1852.4	Front	B2	19.66	21	0.219	0.30	0.429	0.58	-0.1

Note1: The distance between the EUT and the phantom bottom is 10mm.

Table 14.1-15: SAR Values (WCDMA 1900 MHz Band - Body) AP OFF

Ambient Temperature: 22.9°C					Liquid Temperature: 22.5°C					
Frequency		Test Position	Figure No./Note	Conducted Power (dBm)	Max. tune-up Power (dBm)	Measured SAR(10g) (W/kg)	Reported SAR(10g) (W/kg)	Measured SAR(1g) (W/kg)	Reported SAR(1g) (W/kg)	Power Drift (dB)
Ch.	MHz									
9800	1880	Front	/	23.51	24	0.179	0.20	0.277	0.31	0.04
9938	1907.6	Rear	/	23.46	24	0.211	0.24	0.327	0.37	-0.09
9800	1880	Rear	/	23.51	24	0.231	0.26	0.371	0.42	0.01
9662	1852.4	Rear	Fig.15	23.58	24	0.306	0.34	0.476	0.52	0.05
9662	1852.4	Rear	B2	23.58	24	0.301	0.33	0.471	0.52	0.02

Note1: The distance between the EUT and the phantom bottom is 15mm.

Table 14.1-16: SAR Values (LTE Band2 - Head)

Ambient Temperature: 22.9°C					Liquid Temperature: 22.5°C							
Frequency		Mode	Side	Test Position	Figure No./Note	Conducted Power (dBm)	Max. tune-up Power (dBm)	Measured SAR(10g) (W/kg)	Reported SAR(10g) (W/kg)	Measured SAR(1g) (W/kg)	Reported SAR(1g) (W/kg)	Power Drift (dB)
Ch.	MHz											
19100	1900	1RB-Mid	L	Cheek	Fig.16	24.5	24.7	0.448	0.47	0.720	0.75	0.09
19100	1900	1RB-Mid	L	Tilt	/	24.5	24.7	0.144	0.15	0.228	0.24	0.04
19100	1900	1RB-Mid	R	Cheek	/	24.5	24.7	0.217	0.23	0.337	0.35	0.03
19100	1900	1RB-Mid	R	Tilt	/	24.5	24.7	0.158	0.17	0.266	0.28	0.17
19100	1900	50RB-Low	L	Cheek	/	23.27	23.7	0.317	0.35	0.551	0.61	-0.07
19100	1900	50RB-Low	L	Tilt	/	23.27	23.7	0.116	0.13	0.178	0.20	0.01
19100	1900	50RB-Low	R	Cheek	/	23.27	23.7	0.171	0.19	0.267	0.29	0.06
19100	1900	50RB-Low	R	Tilt	/	23.27	23.7	0.121	0.13	0.204	0.23	0.14
19100	1900	1RB-Mid	L	Cheek	B2	24.5	24.7	0.384	0.40	0.669	0.70	0.19

Note1: The LTE mode is QPSK_20MHz.