



## Appendix D. Photo documentation

Table of contents
Test Facility
Test Positions
Liquid depth

## Test Facility

Photo 1: Measurement System DASY5



## Test Positions

Photo 2: Front View



Photo 3: Back View



Photo 4: Left hand touch cheek

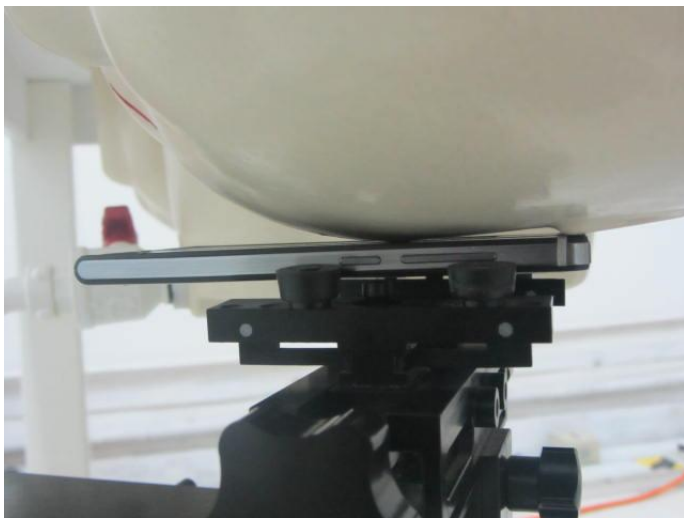


Photo 5: Left hand tilt 15°

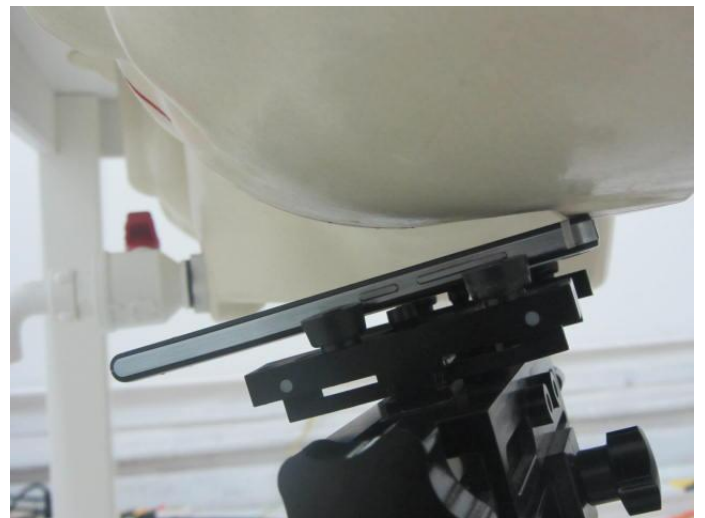


Photo 6: Right hand touch cheek

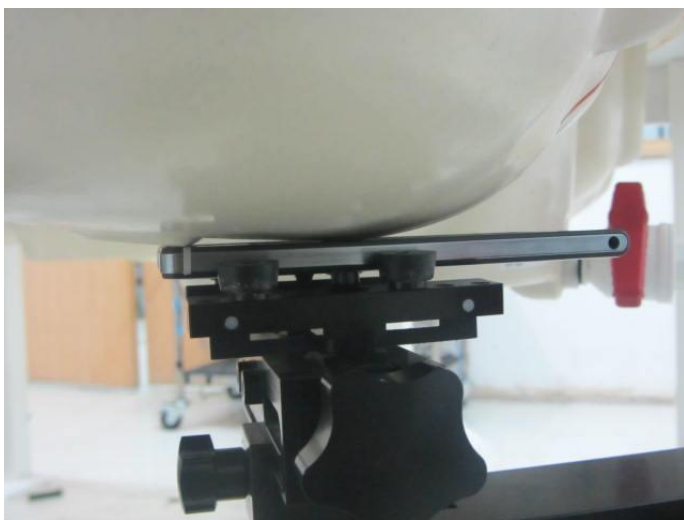


Photo 7: Right hand tilt 15°



Photo 8: Front Side(15mm)

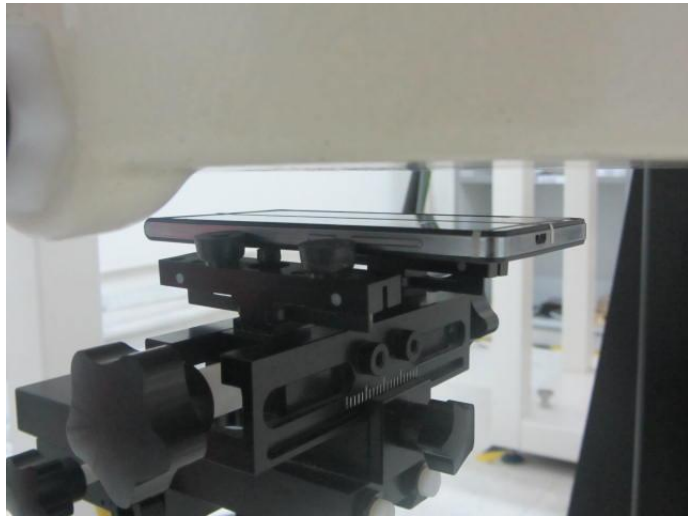


Photo 9: Back Side(15mm)

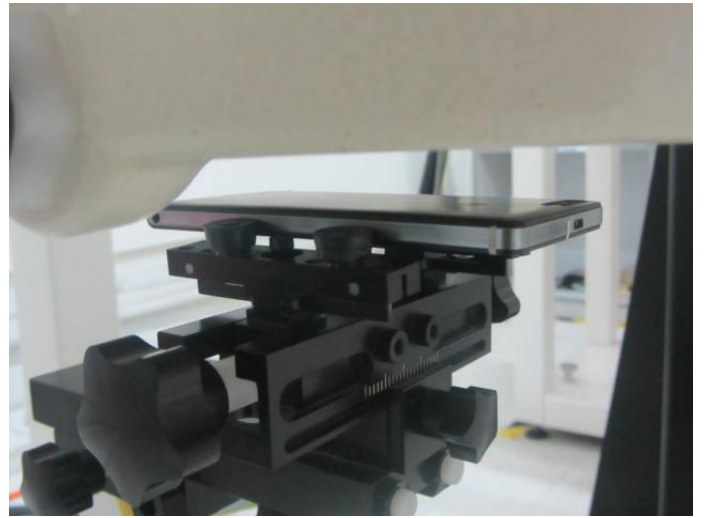


Photo 10: Front Side(10mm)

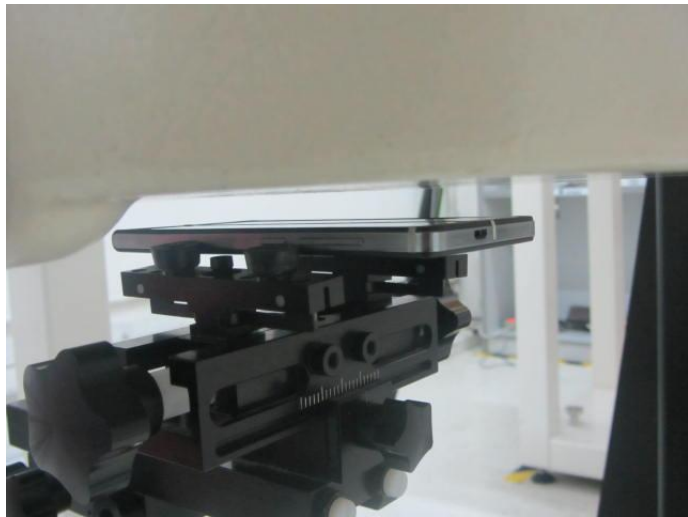


Photo 11: Back Side(10mm)

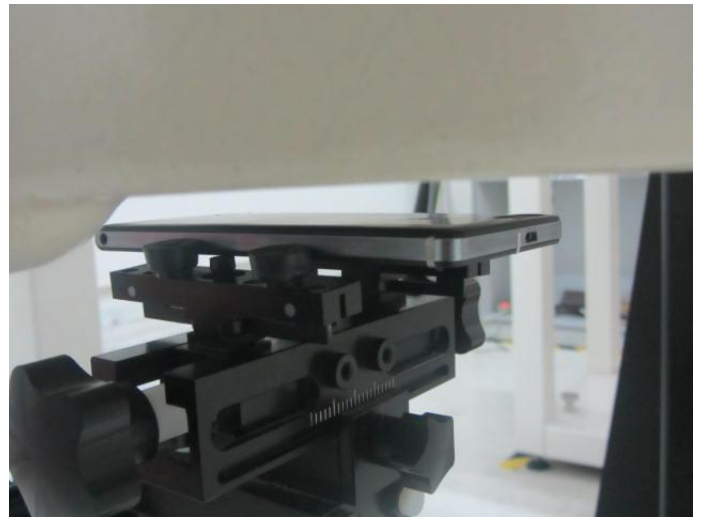


Photo 12:Left Side(10mm)

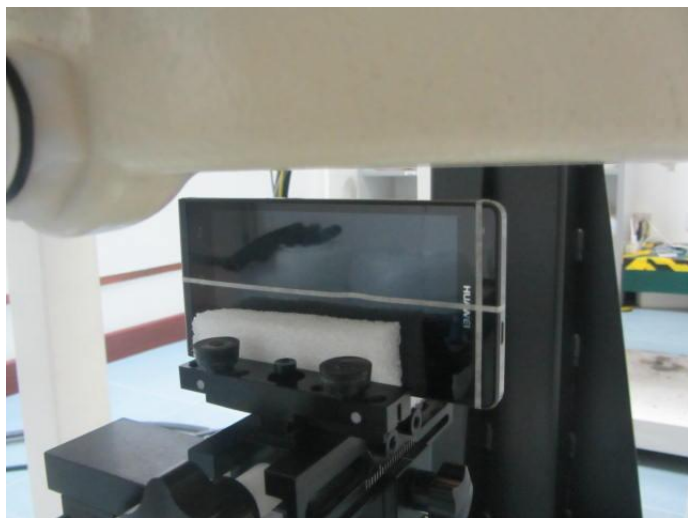


Photo 13: Right Side(10mm)

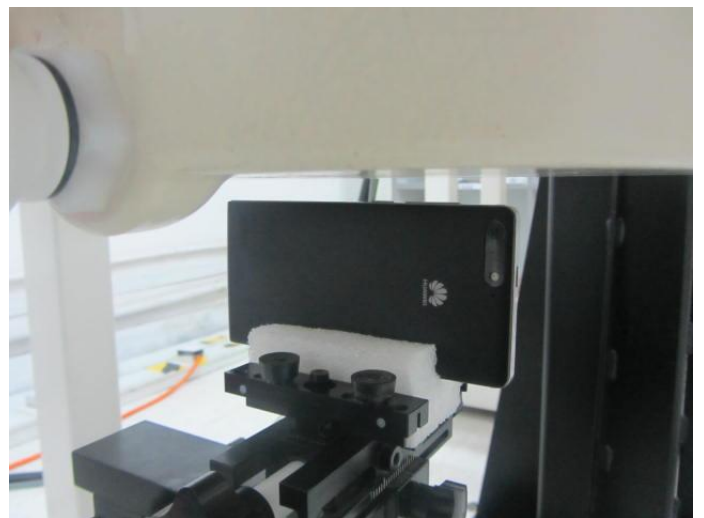


Photo 14: Top Side(15mm)

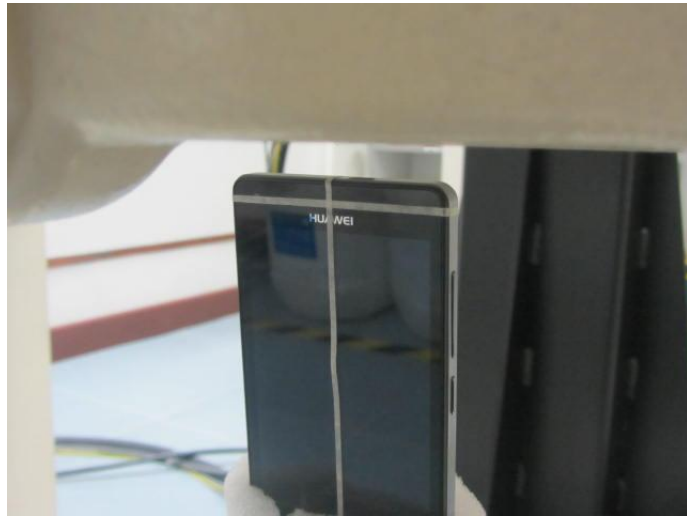
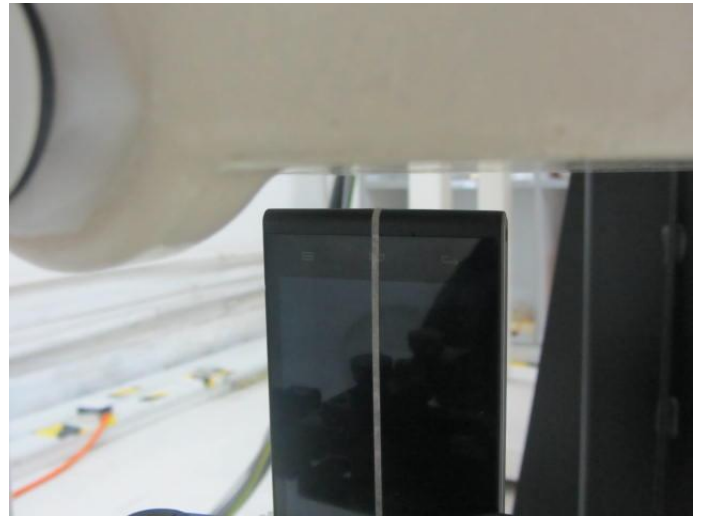


Photo 15: Bottom Side(15mm)



### Liquid depth

Photo 16:HSL 835MHz depth (15.2cm)

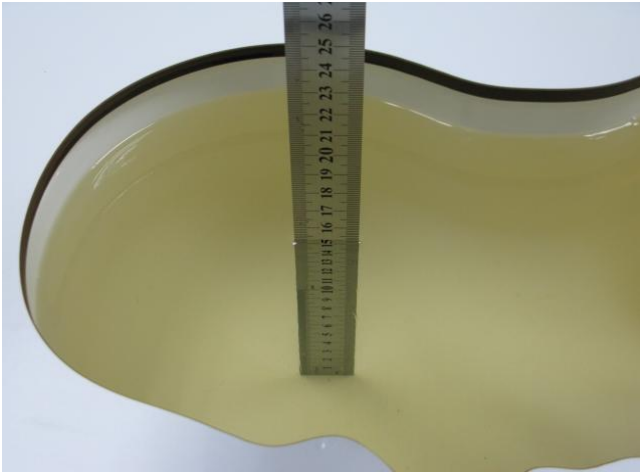


Photo 17:MSL 835MHz depth (15.1cm)

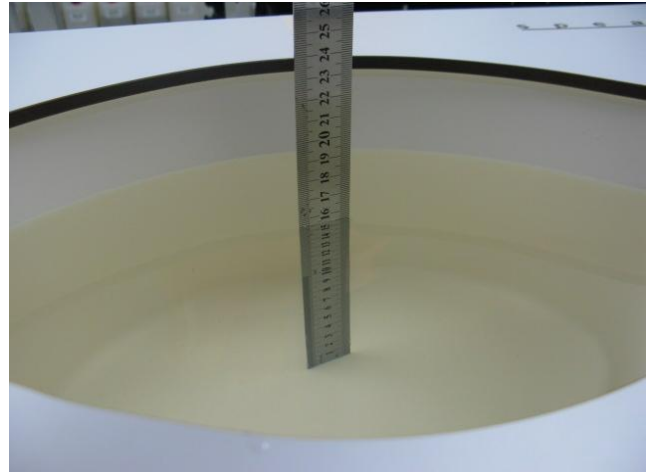


Photo 18:HSL 1900MHz depth (15.3cm)

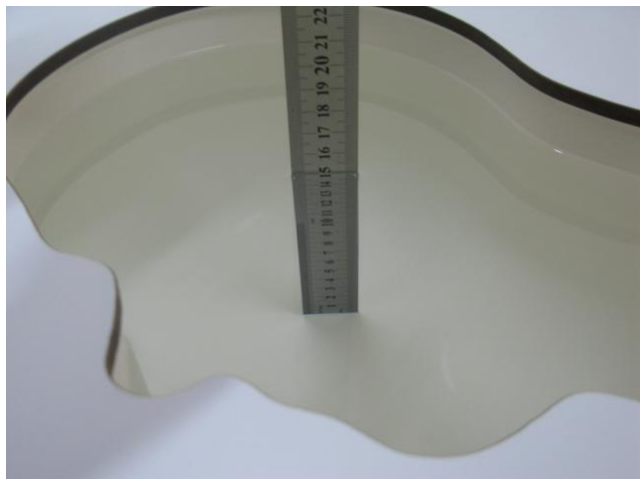


Photo 19:MSL 1900MHz depth (15.1cm)

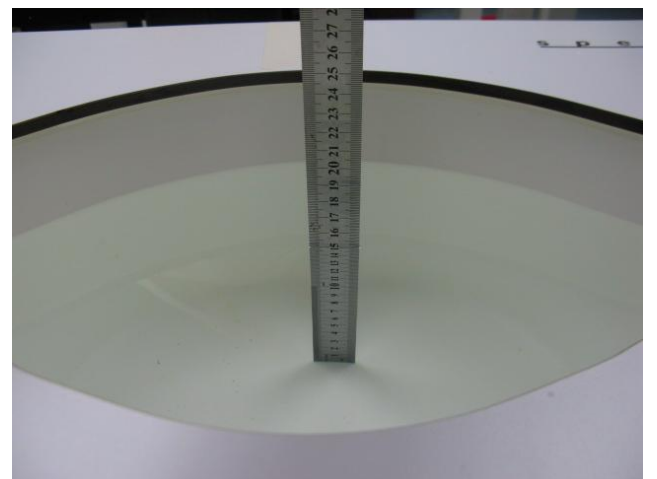


Photo 20:HSL 2450MHz depth (15.1cm)



Photo 21:MSL 2450MHz depth (15.2cm)



Photo 22:HSL 2600MHz depth (15.1cm)

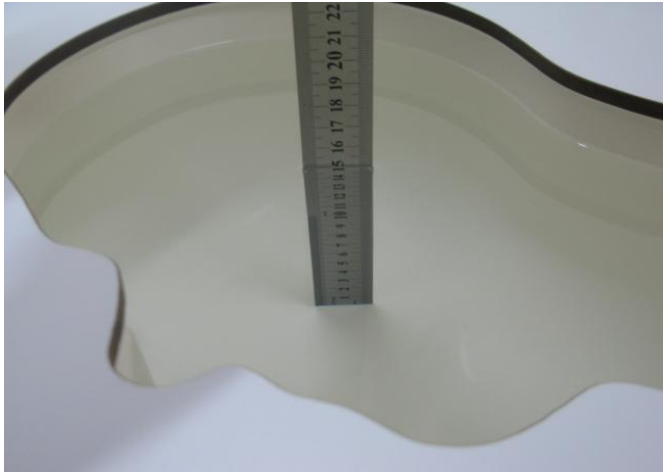


Photo 23:MSL 2600MHz depth (15.2cm)

