

Appendix D. Photo documentation

| Table of contents |
|--------------------------|
| Test Facility |
| Test Positions |
| Liquid depth |

Test Facility

Photo 1: Measurement System DASY5



Test Positions

Photo 2: Front View

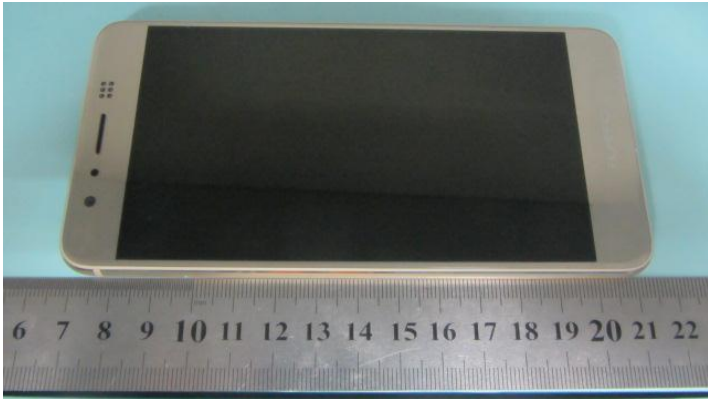


Photo 3: Back View

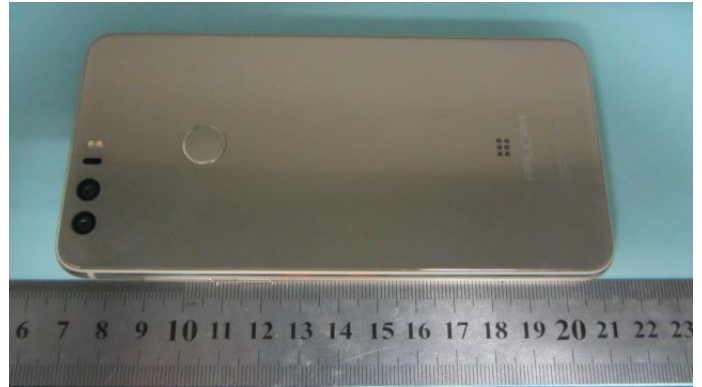


Photo 4: Front Side (15mm)



Photo 5: Back Side (15mm)

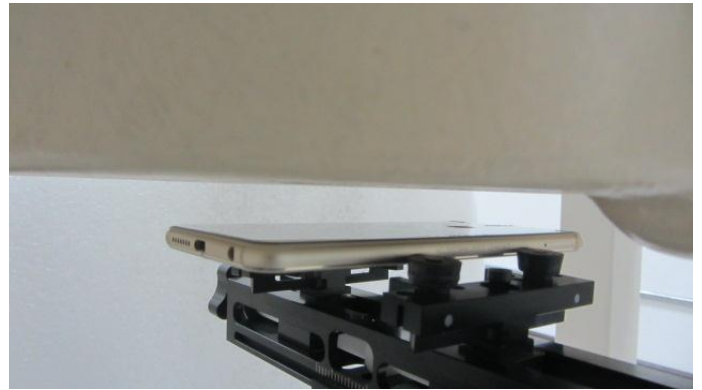


Photo 6: Front Side (10mm)



Photo 7: Back Side (10mm)

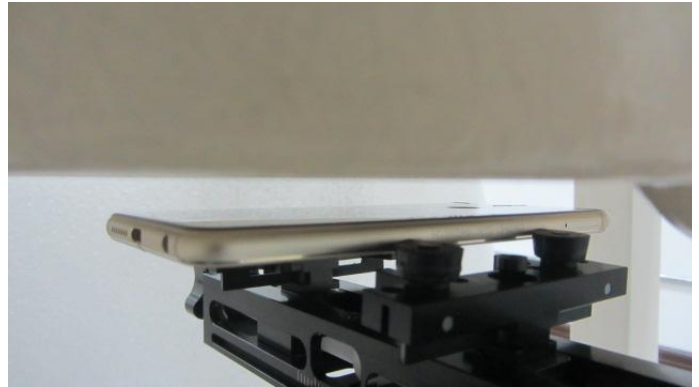


Photo 8: Left Side (10mm)

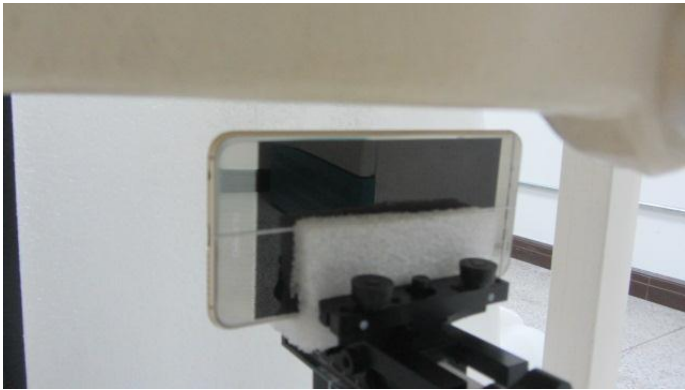


Photo 9: Right Side (10mm)



Photo 10: Top Side (10mm)



Photo 11: Bottom Side (10mm)

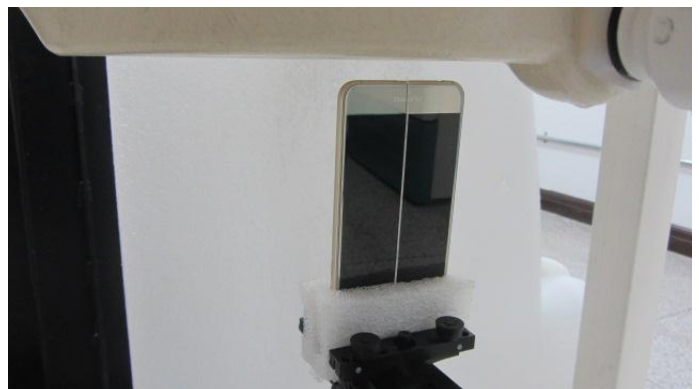


Photo 12: Left hand touch cheek

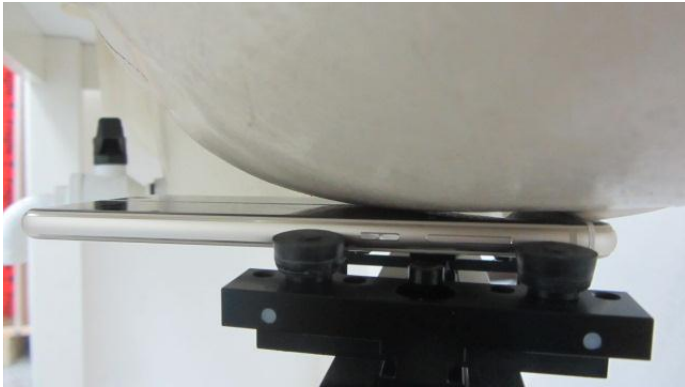


Photo 13: Left hand tilt 15 degree

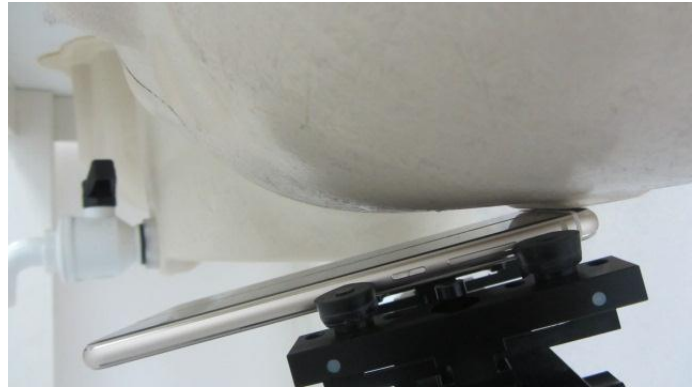


Photo 14: Right hand touch cheek

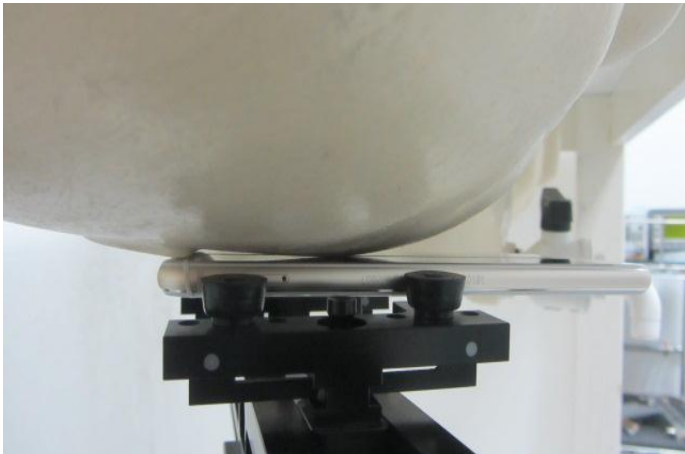
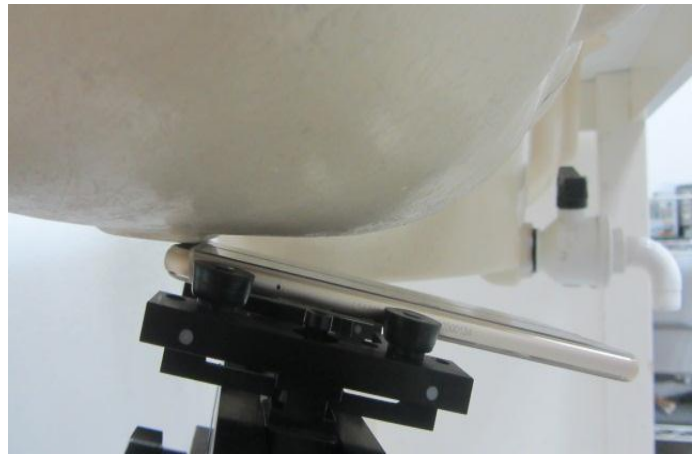


Photo 15: Right hand tilt 15 degree



Liquid depth

Photo 16: HSL750MHz depth (15.1cm)

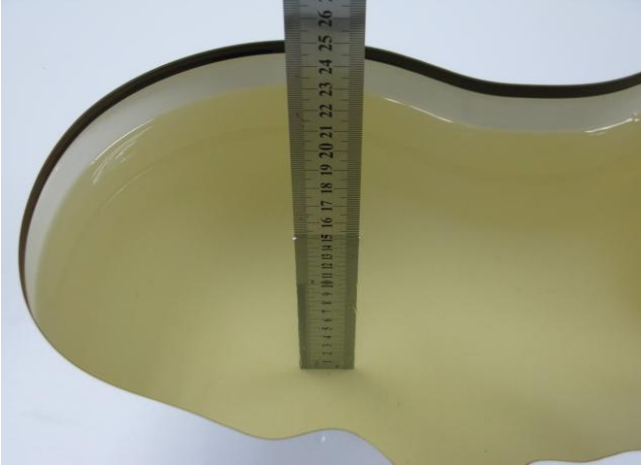


Photo 17: MSL750MHz depth (15.1cm)



Photo 18: HSL835MHz Depth (15.1cm)



Photo 19: MSL835MHz Depth (15.1cm)

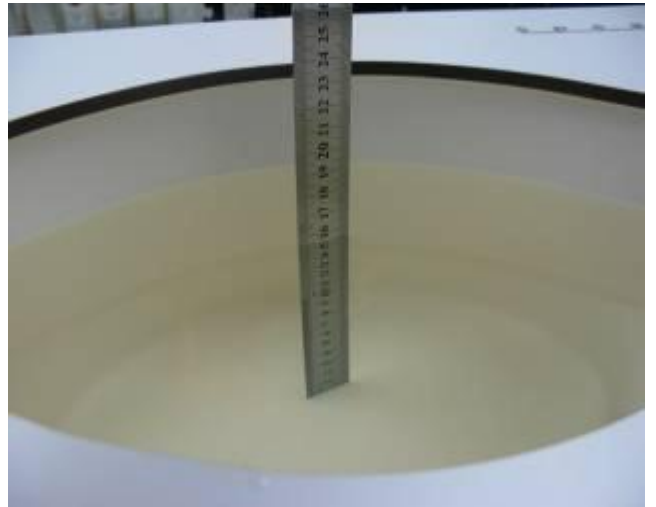


Photo 20: HSL1750MHz Depth (15.2cm)

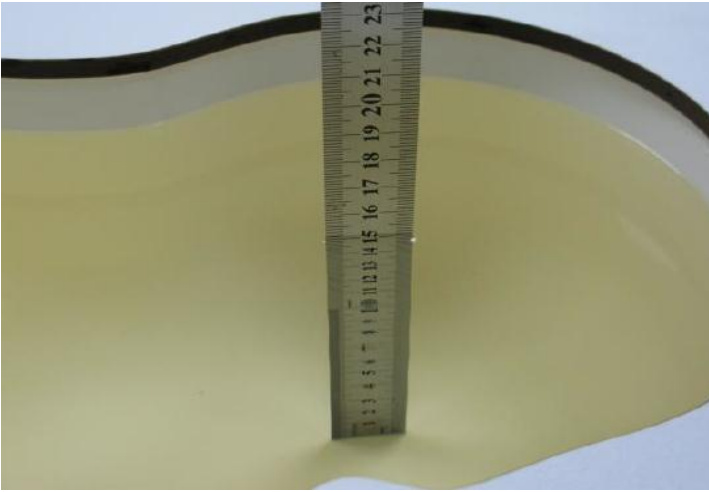


Photo 21: MSL1750MHz Depth (15.2cm)

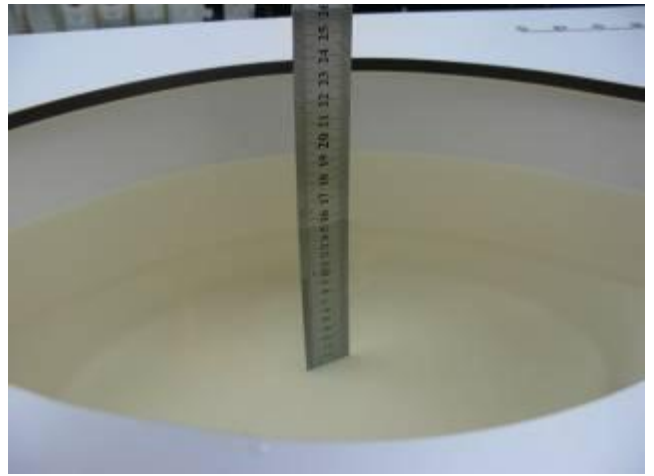


Photo 22: HSL1900MHz Depth (15.1cm)



Photo 23: MSL1900MHz Depth (15.2cm)

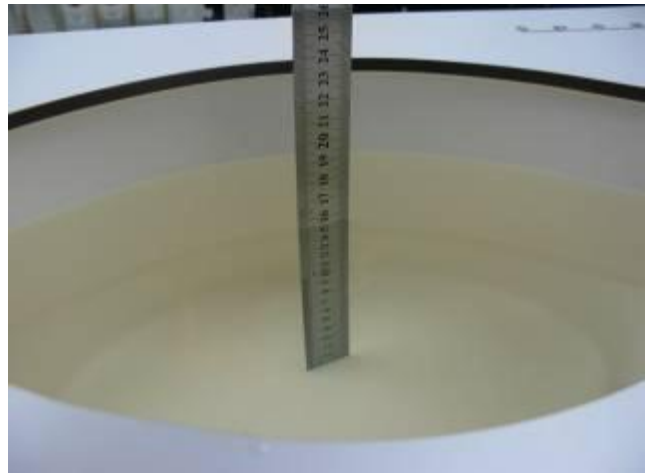


Photo 24: MSL2450MHz Depth (15.1cm)

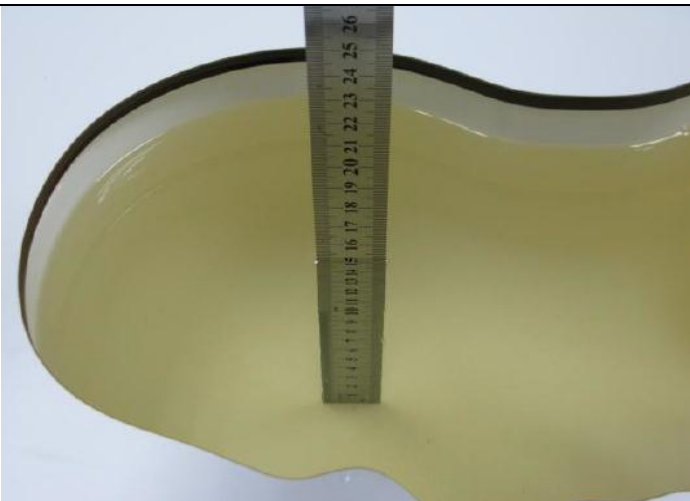


Photo 25: MSL2450MHz Depth (15.2cm)

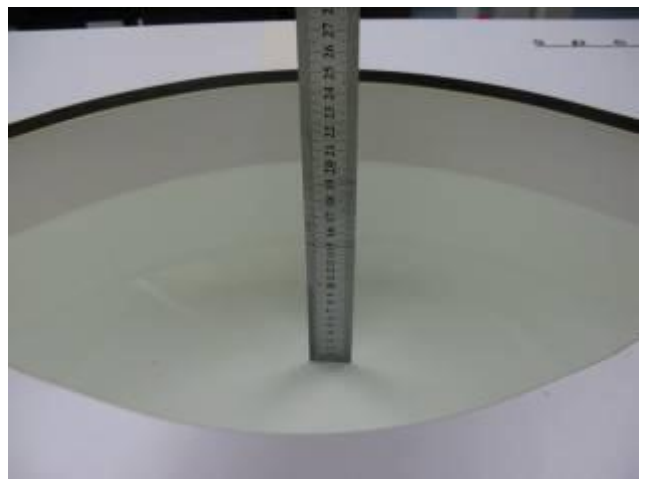


Photo 26: HSL2600MHz Depth (15.2cm)

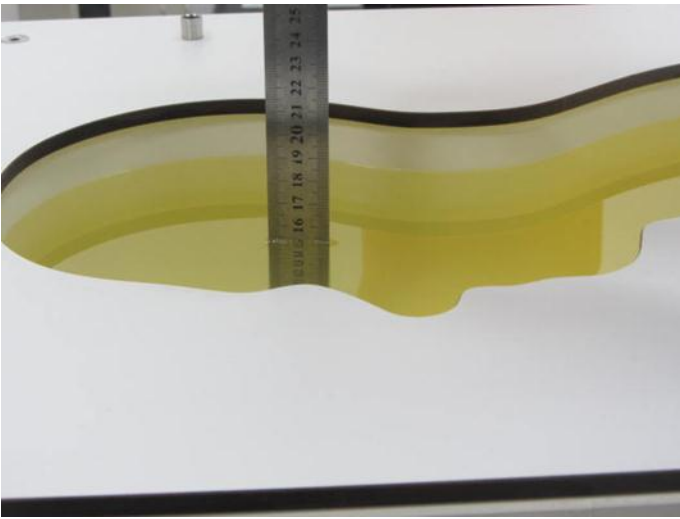


Photo 27: MSL2600MHz Depth (15.2cm)



Photo 28: HBBL3500-5800MHz Depth (15.1cm)



Photo 29: MBL3500-5800MHz Depth (15.2cm)

