

# Appendix D

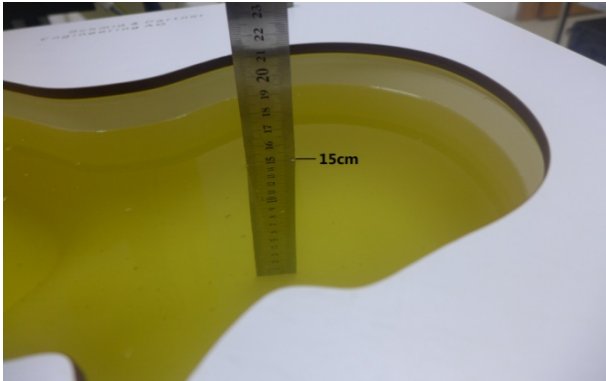
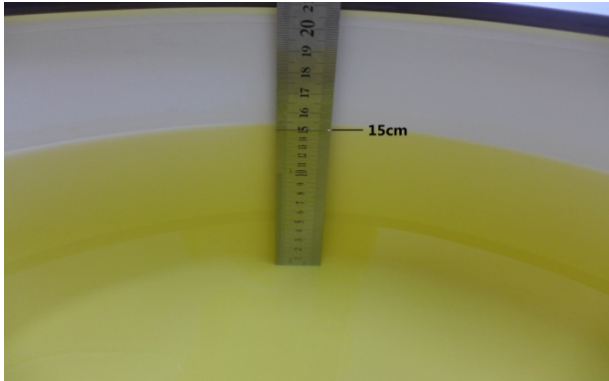
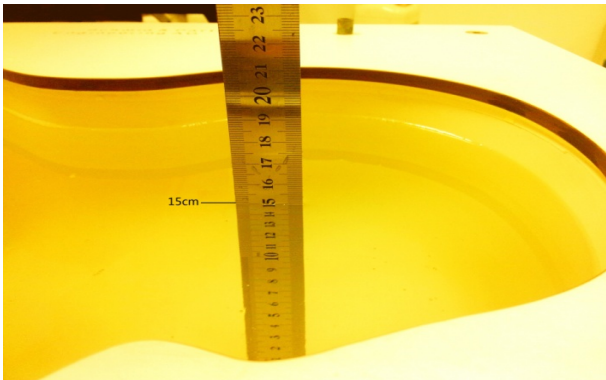
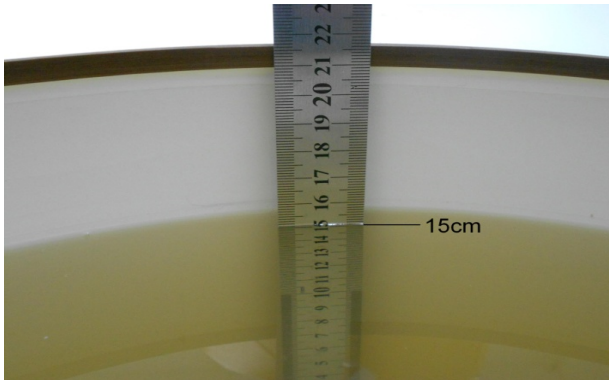
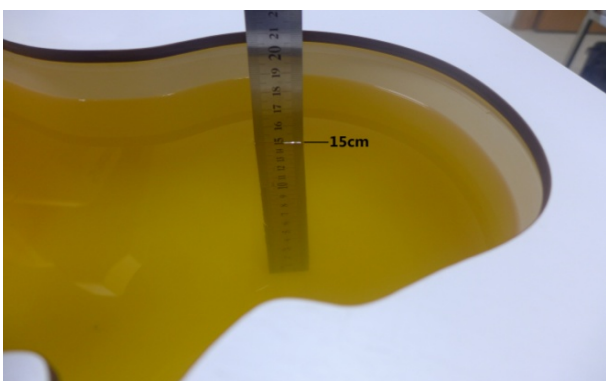
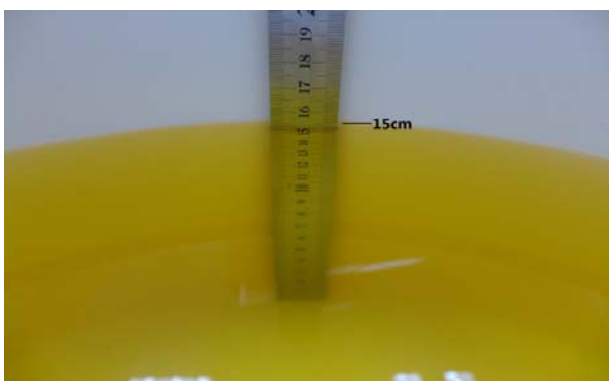
## Photographs

1. SAR measurement System
2. Photographs of Tissue Simulate Liquid
3. Photographs of EUT test position
4. EUT Constructional Details

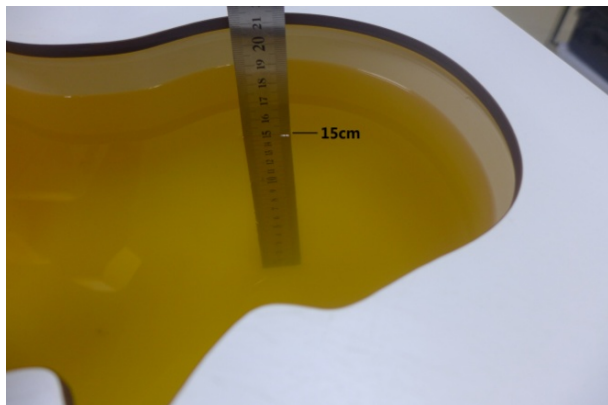
## 1. SAR measurement System



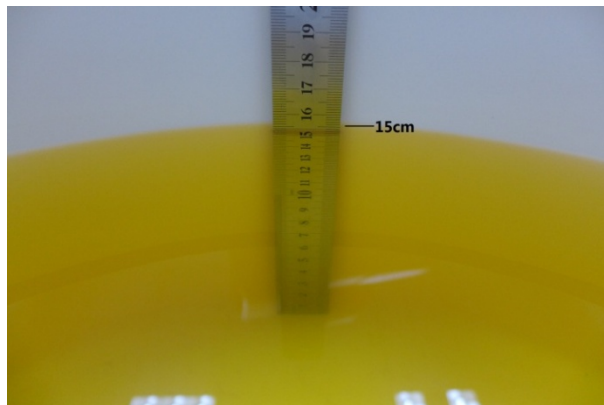
## 2. Photographs of Tissue Simulate Liquid

<p><b>Photo 1: Tissue Simulant Liquid for Head 750</b></p>	<p><b>Photo 2: Tissue Simulant Liquid for Body 750</b></p>
	
<p><b>Photo 3: Tissue Simulant Liquid for Head 835</b></p>	<p><b>Photo 4: Tissue Simulant Liquid for Body 835</b></p>
	
<p><b>Photo 5: Tissue Simulant Liquid for Head 1750</b></p>	<p><b>Photo 6: Tissue Simulant Liquid for Body 1750</b></p>
	

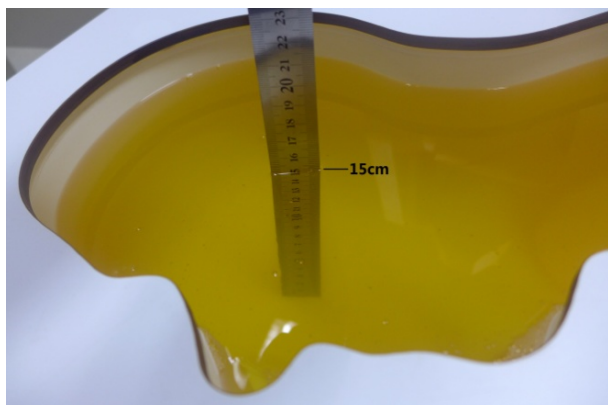
**Photo 7: Tissue Simulant Liquid for Head 1900**



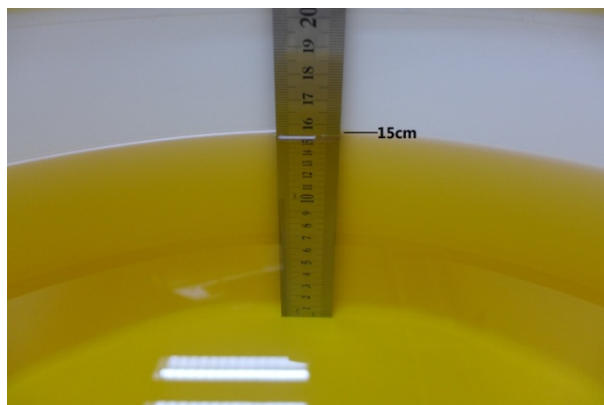
**Photo 8: Tissue Simulant Liquid for Body 1900**



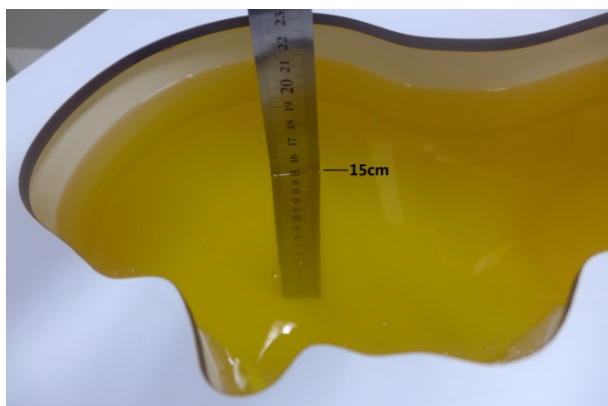
**Photo 9: Tissue Simulant Liquid for Head 2300**



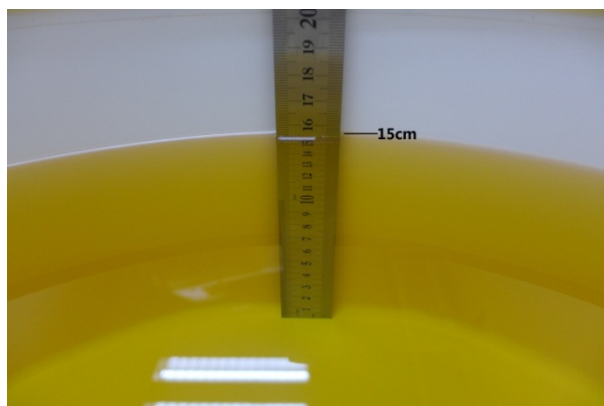
**Photo 10: Tissue Simulant Liquid for Body 2300**



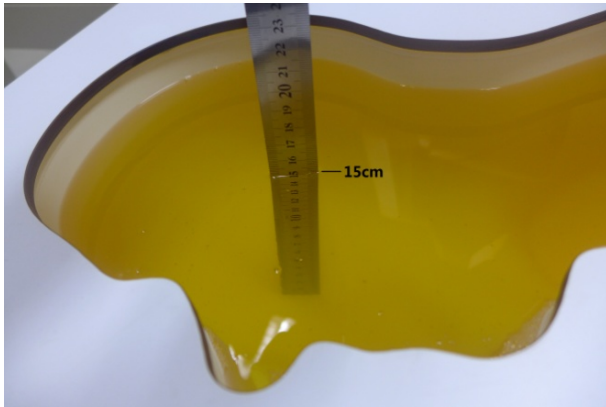
**Photo 11: Tissue Simulant Liquid for Head 2450**



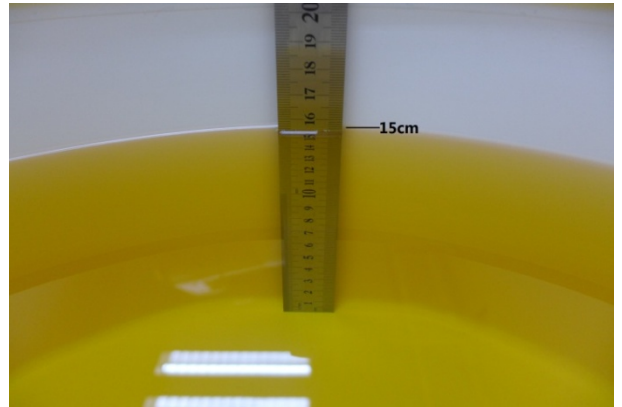
**Photo 12: Tissue Simulant Liquid for Body 2450**



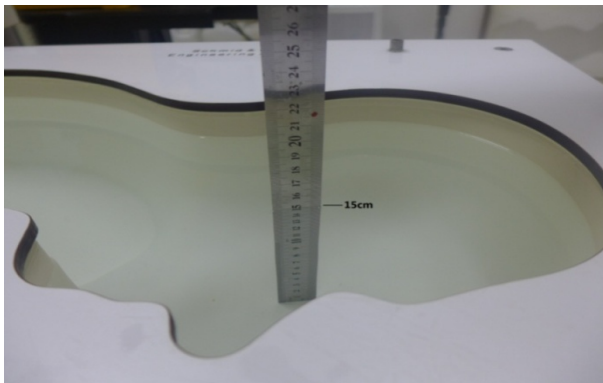
**Photo 13: Tissue Simulant Liquid for Head 2600**



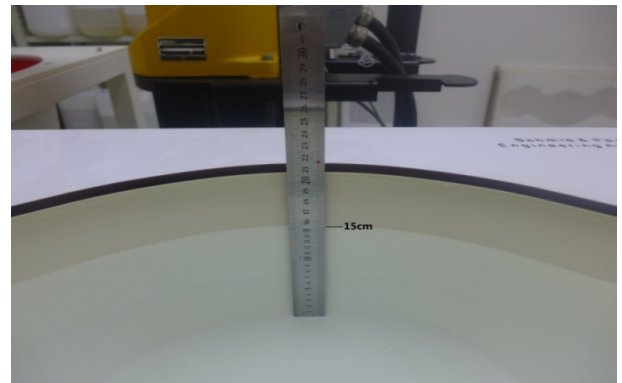
**Photo 14: Tissue Simulant Liquid for Body 2600**



**Photo 15: Tissue Simulant Liquid for Head 5G**



**Photo 16: Tissue Simulant Liquid for Body 5G**





### 3. Photographs of EUT test position

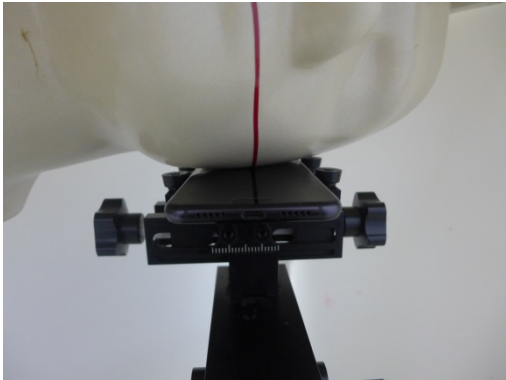
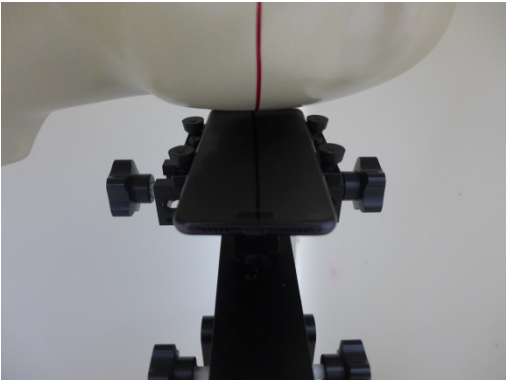
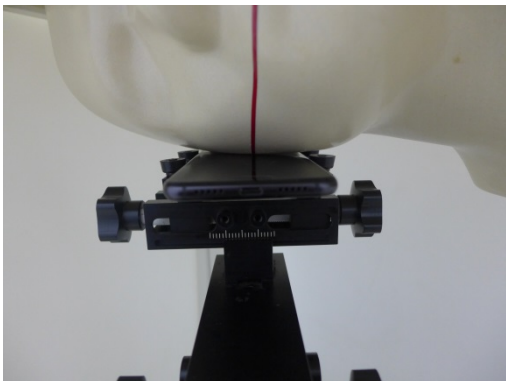
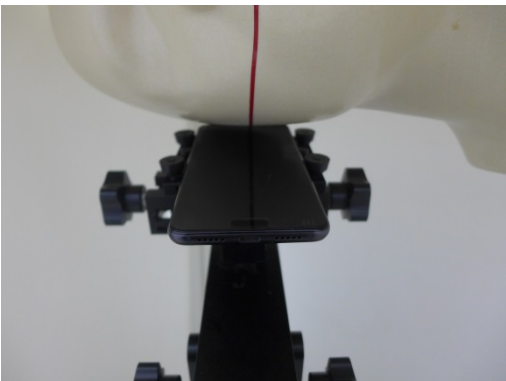


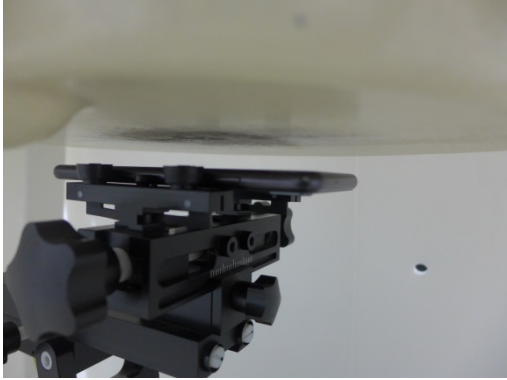





<p>Photo 17: Left touch cheek</p>	<p>Photo 18: Left tilted 15 degree</p>
 A photograph showing a white mannequin head with a red vertical line on the left cheek. A black test fixture is positioned against the cheek, with a smartphone mounted on top. The fixture has several adjustment knobs and a central platform.	 A photograph showing the same setup as Photo 17, but the mannequin head and fixture are tilted to the left by 15 degrees.
<p>Photo 19: Right touch cheek</p>	<p>Photo 20: Right tilted 15 degree</p>
 A photograph showing the white mannequin head with the red vertical line on the right cheek. The black test fixture is positioned against the right cheek with a smartphone on top.	 A photograph showing the same setup as Photo 19, but the mannequin head and fixture are tilted to the right by 15 degrees.
<p>Photo 21: Front side 15mm</p>	<p>Photo 22: Back side 15mm</p>
 A close-up photograph of the front side of the black test fixture, showing the smartphone and the adjustment knobs. The mannequin head is visible in the background.	 A close-up photograph of the back side of the black test fixture, showing the adjustment knobs and the base. The mannequin head is visible in the background.

Photo 23: Front side 10mm	Photo 24: Back side 10mm
	
Photo 25: Left side 10mm	Photo 26: Right side 10mm
	
Photo 27: Top side 10mm	Photo 28: Bottom side 10mm
	

## 4. EUT Constructional Details

