

Appendix B

Detailed Test Results

1. LTE
LTE Band 2 for Head &Body
LTE Band 7 for Head &Body
LTE Band 38 for Head &Body
LTE Band 41 for Head &Body

Test Laboratory: SGS-SAR Lab

**EML-L29 LTE Band 2 20M QPSK PCC 1RB99 18700CH SCC 1RB0 18898CH
Left cheek Ant1 with Battery 2**

DUT: EML-L29; Type: Smart Phone; Serial: UBV0218926001003

Communication System: UID 0, LTE-FDD BW 20MHz (0); Frequency: 1860 MHz;Duty Cycle: 1:1

Medium: HSL1900;Medium parameters used: $f = 1860$ MHz; $\sigma = 1.348$ S/m; $\epsilon_r = 39.012$; $\rho = 1000$ kg/m³

Phantom section: Left Section

DASY 5 Configuration:

- Probe: EX3DV4 - SN3789; ConvF(7.35, 7.35, 7.35); Calibrated: 2018-02-08;
- Sensor-Surface: 1.4mm (Mechanical Surface Detection), $z = -2.0, 31.0$
- Electronics: DAE4 Sn896; Calibrated: 2018-11-08
- Phantom: SAM 2; Type: SAM; Serial: 1913
- DASY52 52.8.8(1222); SEMCAD X 14.6.10(7331)

Configuration/Head/Area Scan (8x13x1): Measurement grid: $dx=15$ mm, $dy=15$ mm
Maximum value of SAR (measured) = 0.165 W/kg

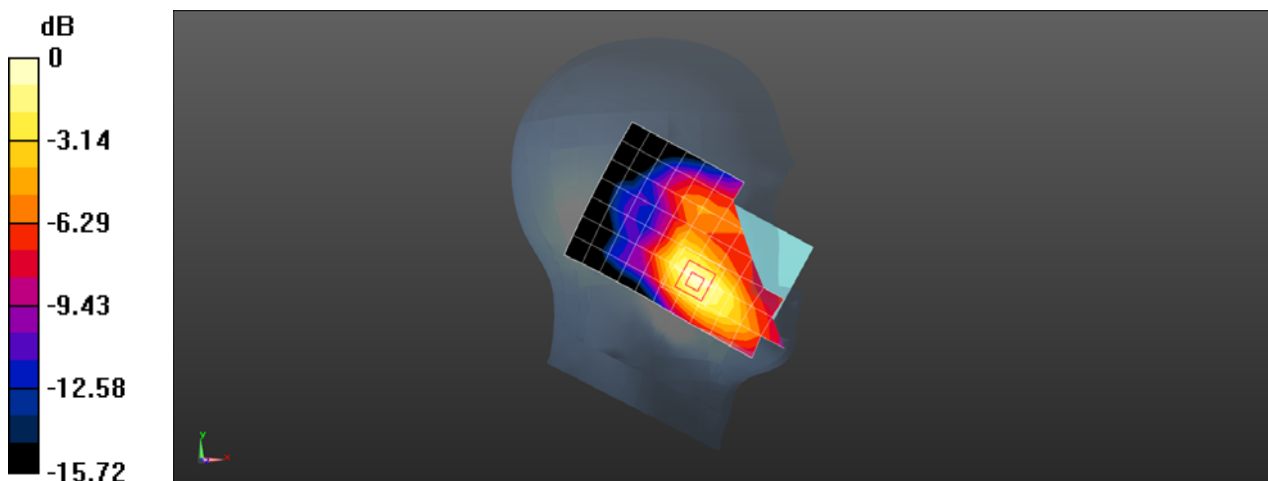
Configuration/Head/Zoom Scan (5x5x7)/Cube 0: Measurement grid: $dx=8$ mm, $dy=8$ mm, $dz=5$ mm

Reference Value = 3.201 V/m; Power Drift = 0.02 dB

Peak SAR (extrapolated) = 0.203 W/kg

SAR(1 g) = 0.126 W/kg; SAR(10 g) = 0.078 W/kg

Maximum value of SAR (measured) = 0.173 W/kg



0 dB = 0.173 W/kg = -7.62 dBW/kg

Test Laboratory: SGS-SAR Lab

**EML-L29 LTE Band 2 20M QPSK PCC 1RB0 19100CH SCC 1RB99 18902CH
Front side 15mm Ant1 with Battery 2**

DUT: EML-L29; Type: Smart Phone; Serial: UBV0218926001003

Communication System: UID 0, LTE-FDD BW 20MHz (0); Frequency: 1900 MHz;Duty Cycle: 1:1

Medium: MSL1900;Medium parameters used: $f = 1900$ MHz; $\sigma = 1.5$ S/m; $\epsilon_r = 52.66$; $\rho = 1000$ kg/m³

Phantom section: Flat Section

DASY 5 Configuration:

- Probe: EX3DV4 - SN3789; ConvF(7.28, 7.28, 7.28); Calibrated: 2018-02-08;
- Sensor-Surface: 1.4mm (Mechanical Surface Detection), $z = -2.0, 31.0$
- Electronics: DAE4 Sn896; Calibrated: 2018-11-08
- Phantom: SAM 1; Type: SAM; Serial: 1283
- DASY52 52.8.8(1222); SEMCAD X 14.6.10(7331)

Configuration/Body/Area Scan (8x13x1): Measurement grid: $dx=15$ mm, $dy=15$ mm
Maximum value of SAR (measured) = 0.440 W/kg

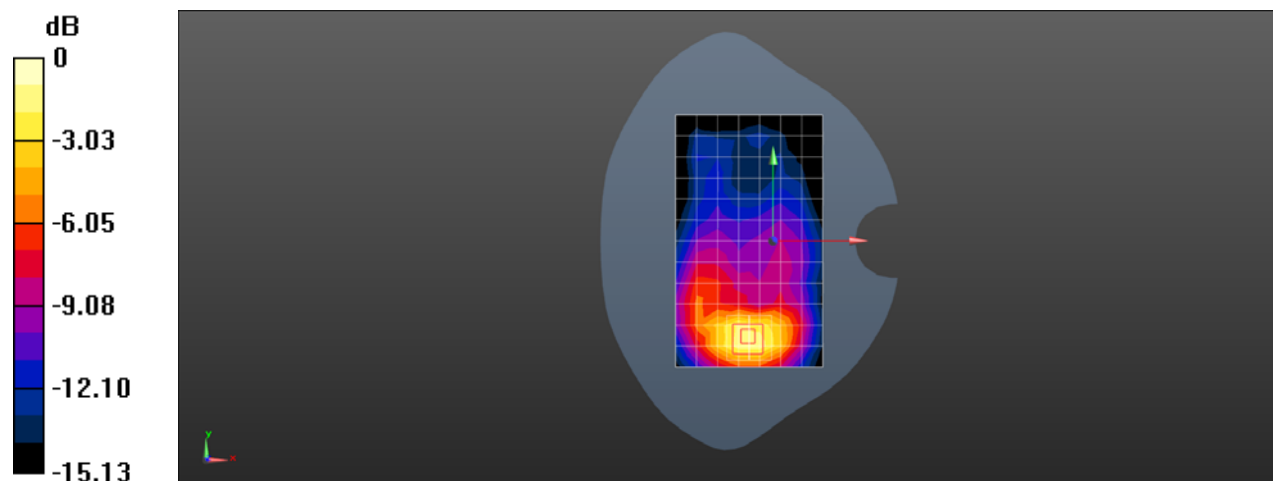
Configuration/Body/Zoom Scan (5x5x7)/Cube 0: Measurement grid: $dx=8$ mm, $dy=8$ mm, $dz=5$ mm

Reference Value = 6.330 V/m; Power Drift = 0.11 dB

Peak SAR (extrapolated) = 0.681 W/kg

SAR(1 g) = 0.428 W/kg; SAR(10 g) = 0.255 W/kg

Maximum value of SAR (measured) = 0.596 W/kg



0 dB = 0.596 W/kg = -2.25 dBW/kg

Test Laboratory: SGS-SAR Lab

**EML-L29 LTE Band 2 20M QPSK PCC 1RB0 19100CH SCC 1RB99 18902CH
Bottom side 10mm Ant1 with Battery 2**

DUT: EML-L29; Type: Smart Phone; Serial: UBV0218926001003

Communication System: UID 0, LTE-FDD BW 20MHz (0); Frequency: 1900 MHz; Duty Cycle: 1:1

Medium: MSL1900; Medium parameters used: $f = 1900$ MHz; $\sigma = 1.5$ S/m; $\epsilon_r = 52.66$; $\rho = 1000$ kg/m³

Phantom section: Flat Section

DASY 5 Configuration:

- Probe: EX3DV4 - SN3789; ConvF(7.28, 7.28, 7.28); Calibrated: 2018-02-08;
- Sensor-Surface: 1.4mm (Mechanical Surface Detection), $z = -2.0, 31.0$
- Electronics: DAE4 Sn896; Calibrated: 2018-11-08
- Phantom: SAM 1; Type: SAM; Serial: 1283
- DASY52 52.8.8(1222); SEMCAD X 14.6.10(7331)

Configuration/Body/Area Scan (5x8x1): Measurement grid: $dx=15$ mm, $dy=15$ mm
Maximum value of SAR (measured) = 0.600 W/kg

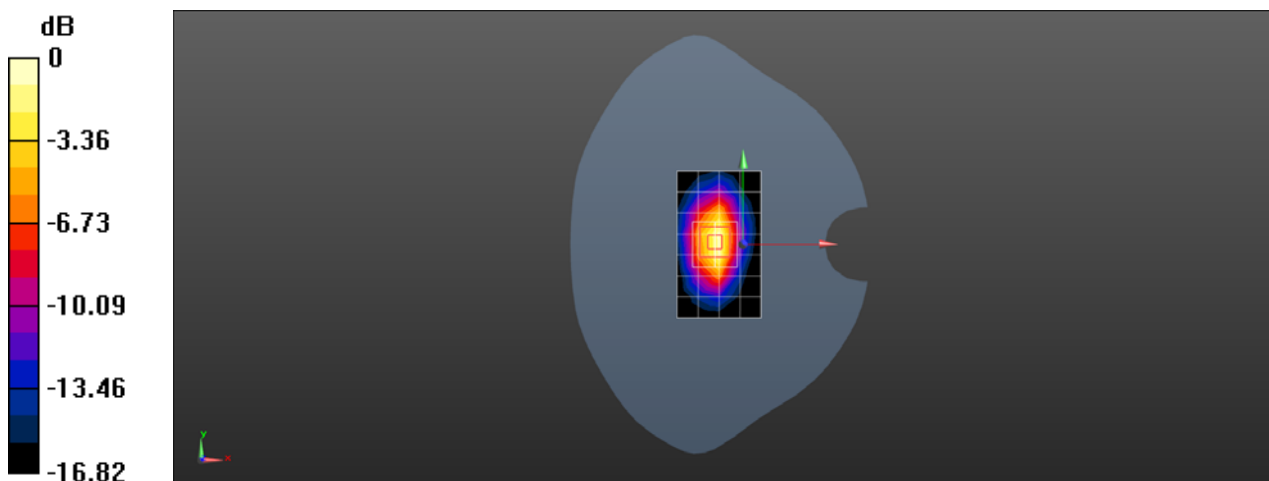
Configuration/Body/Zoom Scan (5x5x7)/Cube 0: Measurement grid: $dx=8$ mm, $dy=8$ mm, $dz=5$ mm

Reference Value = 21.30 V/m; Power Drift = 0.00 dB

Peak SAR (extrapolated) = 0.829 W/kg

SAR(1 g) = 0.473 W/kg; SAR(10 g) = 0.252 W/kg

Maximum value of SAR (measured) = 0.697 W/kg



0 dB = 0.697 W/kg = -1.57 dBW/kg

Test Laboratory: SGS-SAR Lab

**EML-L29 LTE Band 2 20M QPSK PCC 1RB0 18900CH SCC 1RB99 18702CH
Left tilted Ant2 with Battery 2**

DUT: EML-L29; Type: Smart Phone; Serial: UBV0218926001003

Communication System: UID 0, LTE-FDD BW 20MHz (0); Frequency: 1880 MHz; Duty Cycle: 1:1

Medium: HSL1900; Medium parameters used: $f = 1880$ MHz; $\sigma = 1.367$ S/m; $\epsilon_r = 38.922$; $\rho = 1000$ kg/m³

Phantom section: Left Section

DASY 5 Configuration:

- Probe: EX3DV4 - SN3789; ConvF(7.35, 7.35, 7.35); Calibrated: 2018-02-08;
- Sensor-Surface: 1.4mm (Mechanical Surface Detection), $z = -2.0, 31.0$
- Electronics: DAE4 Sn896; Calibrated: 2018-11-08
- Phantom: SAM 2; Type: SAM; Serial: 1913
- DASY52 52.8.8(1222); SEMCAD X 14.6.10(7331)

Configuration/Head/Area Scan (8x13x1): Measurement grid: $dx=15$ mm, $dy=15$ mm
Maximum value of SAR (measured) = 0.660 W/kg

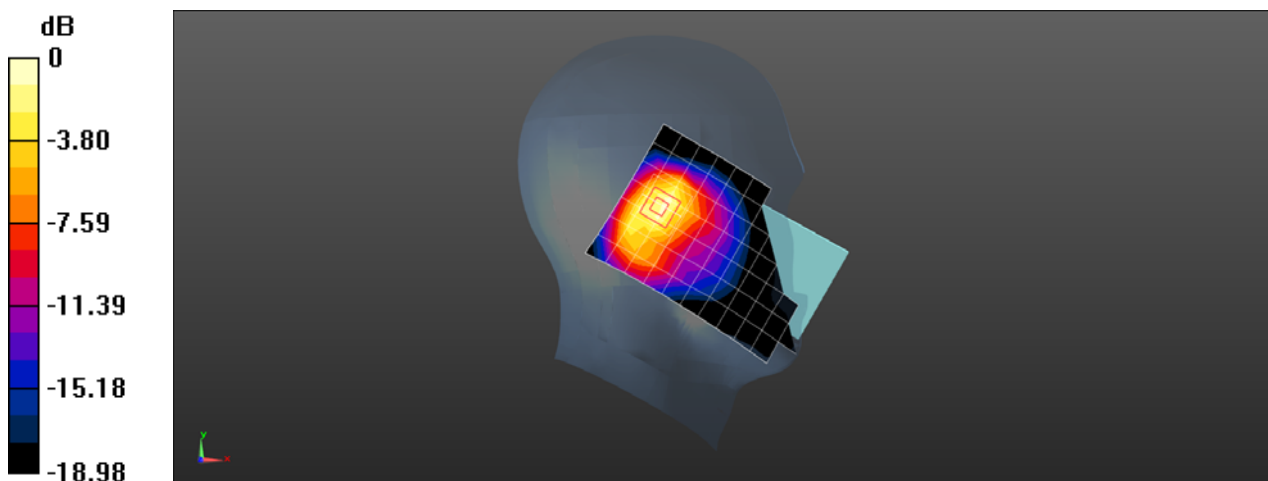
Configuration/Head/Zoom Scan (5x5x7)/Cube 0: Measurement grid: $dx=8$ mm, $dy=8$ mm, $dz=5$ mm

Reference Value = 22.34 V/m; Power Drift = -0.02 dB

Peak SAR (extrapolated) = 0.873 W/kg

SAR(1 g) = 0.530 W/kg; SAR(10 g) = 0.304 W/kg

Maximum value of SAR (measured) = 0.742 W/kg



0 dB = 0.742 W/kg = -1.30 dBW/kg

Test Laboratory: SGS-SAR Lab

**EML-L29 LTE Band 2 20M QPSK PCC 1RB0 19100CH SCC 1RB99 18902CH
Back side 15mm Ant2 with Battery 2**

DUT: EML-L29; Type: Smart Phone; Serial: UBV0218926001003

Communication System: UID 0, LTE-FDD BW 20MHz (0); Frequency: 1900 MHz; Duty Cycle: 1:1

Medium: MSL1900; Medium parameters used: $f = 1900$ MHz; $\sigma = 1.5$ S/m; $\epsilon_r = 52.66$; $\rho = 1000$ kg/m³

Phantom section: Flat Section

DASY 5 Configuration:

- Probe: EX3DV4 - SN3789; ConvF(7.28, 7.28, 7.28); Calibrated: 2018-02-08;
- Sensor-Surface: 1.4mm (Mechanical Surface Detection), $z = -2.0, 31.0$
- Electronics: DAE4 Sn896; Calibrated: 2018-11-08
- Phantom: SAM 1; Type: SAM; Serial: 1283
- DASY52 52.8.8(1222); SEMCAD X 14.6.10(7331)

Configuration/Body/Area Scan (8x13x1): Measurement grid: $dx=15$ mm, $dy=15$ mm
Maximum value of SAR (measured) = 0.498 W/kg

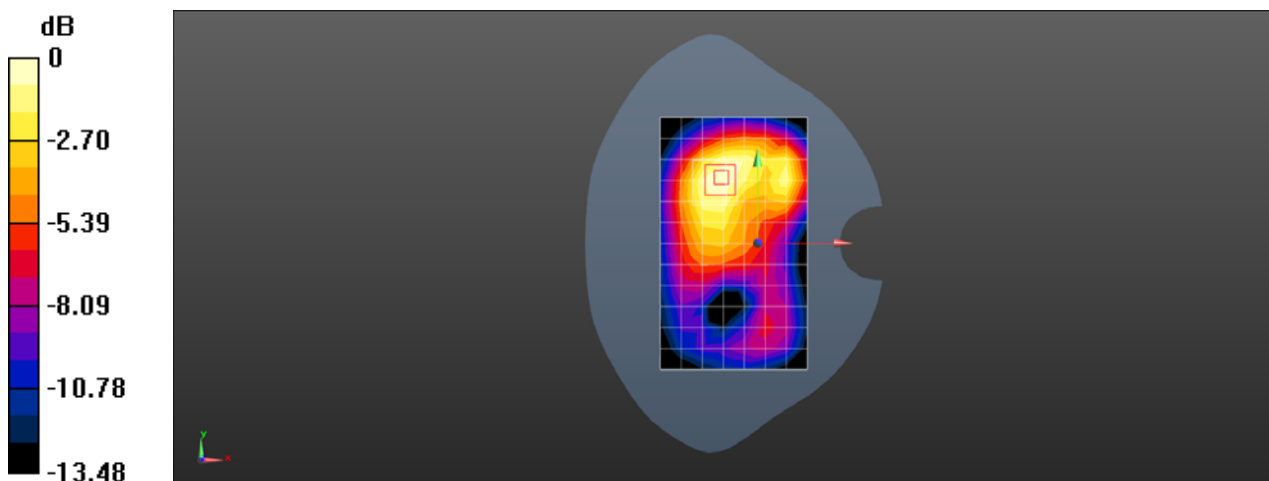
Configuration/Body/Zoom Scan (5x5x7)/Cube 0: Measurement grid: $dx=8$ mm, $dy=8$ mm, $dz=5$ mm

Reference Value = 12.19 V/m; Power Drift = -0.04 dB

Peak SAR (extrapolated) = 0.576 W/kg

SAR(1 g) = 0.382 W/kg; SAR(10 g) = 0.252 W/kg

Maximum value of SAR (measured) = 0.496 W/kg



0 dB = 0.496 W/kg = -3.05 dBW/kg

Test Laboratory: SGS-SAR Lab

**EML-L29 LTE Band 2 20M QPSK PCC 1RB0 18900CH SCC 1RB99 18702CH
Top side 10mm with 2.4G WIFI Ant2 with Battery 2**

DUT: EML-L29; Type: Smart Phone; Serial: UBV0218926001003

Communication System: UID 0, LTE-FDD BW 20MHz (0); Frequency: 1880 MHz;Duty Cycle: 1:1

Medium: MSL1900;Medium parameters used: $f = 1880$ MHz; $\sigma = 1.483$ S/m; $\epsilon_r = 52.705$; $\rho = 1000$ kg/m³

Phantom section: Flat Section

DASY 5 Configuration:

- Probe: EX3DV4 - SN3789; ConvF(7.28, 7.28, 7.28); Calibrated: 2018-02-08;
- Sensor-Surface: 1.4mm (Mechanical Surface Detection), $z = -2.0, 31.0$
- Electronics: DAE4 Sn896; Calibrated: 2018-11-08
- Phantom: SAM 1; Type: SAM; Serial: 1283
- DASY52 52.8.8(1222); SEMCAD X 14.6.10(7331)

Configuration/Body/Area Scan (5x8x1): Measurement grid: $dx=15$ mm, $dy=15$ mm
Maximum value of SAR (measured) = 0.385 W/kg

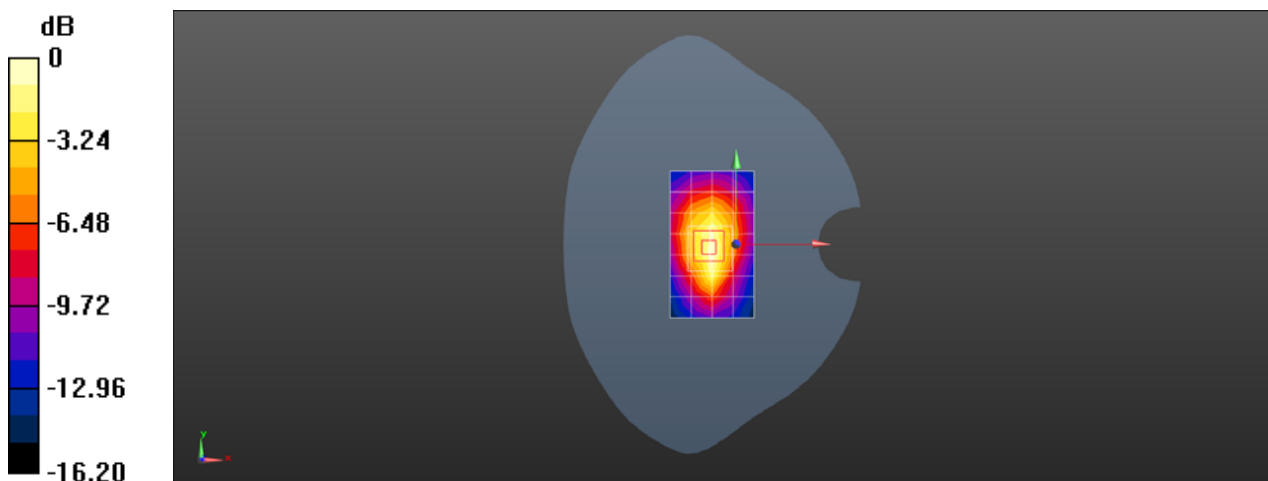
Configuration/Body/Zoom Scan (5x5x7)/Cube 0: Measurement grid: $dx=8$ mm, $dy=8$ mm, $dz=5$ mm

Reference Value = 16.63 V/m; Power Drift = -0.18 dB

Peak SAR (extrapolated) = 0.458 W/kg

SAR(1 g) = 0.276 W/kg; SAR(10 g) = 0.164 W/kg

Maximum value of SAR (measured) = 0.389 W/kg



0 dB = 0.389 W/kg = -4.10 dBW/kg

Test Laboratory: SGS-SAR Lab

**EML-L29 LTE Band 7 20M QPSK PCC 1RB0 21350CH SCC 1RB99 21152CH
Left tilted Ant1 with Battery 3**

DUT: EML-L29; Type: Smart Phone; Serial: UBV0218926001043

Communication System: UID 0, LTE-FDD BW 20MHz (0); Frequency: 2560 MHz;Duty Cycle: 1:1

Medium: HSL2600;Medium parameters used: $f = 2560$ MHz; $\sigma = 1.925$ S/m; $\epsilon_r = 39.806$; $\rho = 1000$ kg/m³

Phantom section: Left Section

DASY 5 Configuration:

- Probe: EX3DV4 - SN3962; ConvF(7.52, 7.52, 7.52); Calibrated: 2018-01-11;
- Sensor-Surface: 1.4mm (Mechanical Surface Detection), $z = -2.0, 31.0$
- Electronics: DAE4 Sn1428; Calibrated: 2018-01-17
- Phantom: SAM 3; Type: SAM; Serial: 1912
- DASY52 52.8.8(1222); SEMCAD X 14.6.10(7331)

Configuration/Head/Area Scan (9x16x1): Measurement grid: $dx=12$ mm, $dy=12$ mm
Maximum value of SAR (measured) = 0.105 W/kg

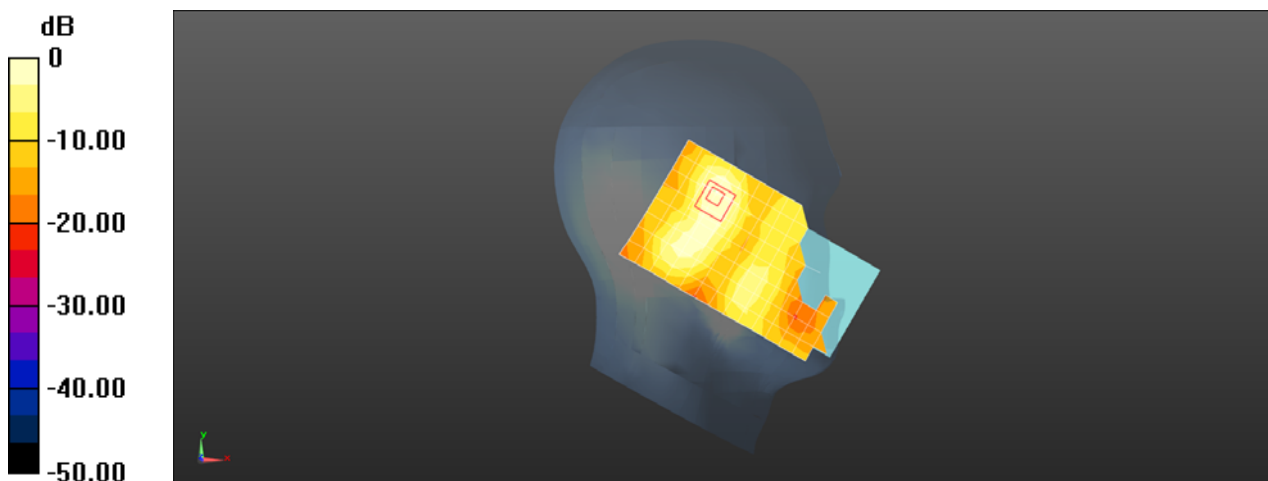
Configuration/Head/Zoom Scan (7x7x7)/Cube 0: Measurement grid: $dx=5$ mm, $dy=5$ mm, $dz=5$ mm

Reference Value = 3.671 V/m; Power Drift = -0.02 dB

Peak SAR (extrapolated) = 0.115 W/kg

SAR(1 g) = 0.064 W/kg; SAR(10 g) = 0.031 W/kg

Maximum value of SAR (measured) = 0.0941 W/kg



0 dB = 0.0941 W/kg = -10.26 dBW/kg

Test Laboratory: SGS-SAR Lab

**EML-L29 LTE Band 7 20M QPSK PCC 1RB0 21100CH SCC 1RB99 20902CH
Front side 15mm Ant1**

DUT: EML-L29; Type: Smart Phone; Serial: UBV0218926001029

Communication System: UID 0, LTE-FDD BW 20MHz (0); Frequency: 2535 MHz;Duty Cycle: 1:1

Medium: MSL2600;Medium parameters used: $f = 2535$ MHz; $\sigma = 2$ S/m; $\epsilon_r = 51.417$; $\rho = 1000$ kg/m³

Phantom section: Flat Section

DASY 5 Configuration:

- Probe: EX3DV4 - SN3789; ConvF(7.15, 7.15, 7.15); Calibrated: 2018-02-08;
- Sensor-Surface: 1.4mm (Mechanical Surface Detection), $z = -2.0, 31.0$
- Electronics: DAE4 Sn896; Calibrated: 2018-11-08
- Phantom: SAM2; Type: SAM; Serial: 1913
- DASY52 52.8.8(1222); SEMCAD X 14.6.10(7331)

Configuration/Body/Area Scan (9x16x1): Measurement grid: $dx=12$ mm, $dy=12$ mm
Maximum value of SAR (measured) = 0.304 W/kg

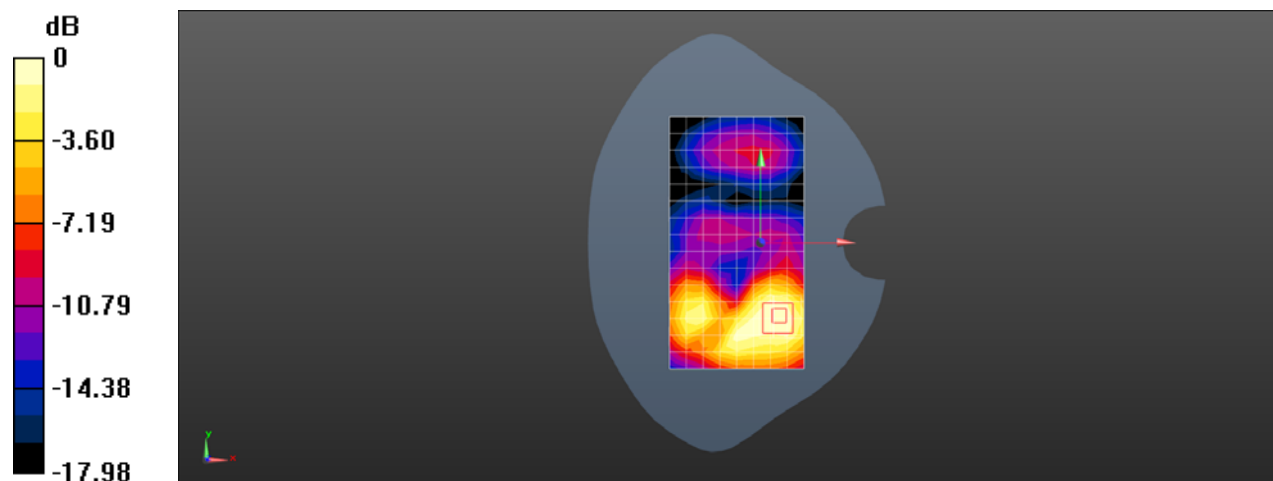
Configuration/Body/Zoom Scan (7x7x7)/Cube 0: Measurement grid: $dx=5$ mm, $dy=5$ mm, $dz=5$ mm

Reference Value = 4.124 V/m; Power Drift = -0.01 dB

Peak SAR (extrapolated) = 0.375 W/kg

SAR(1 g) = 0.212 W/kg; SAR(10 g) = 0.121 W/kg

Maximum value of SAR (measured) = 0.311 W/kg



0 dB = 0.311 W/kg = -5.07 dBW/kg

Test Laboratory: SGS-SAR Lab

**EML-L29 LTE Band 7 20M QPSK PCC 1RB0 21350CH SCC 1RB99 21152CH
Bottom side 10mm Ant1**

DUT: EML-L29; Type: Smart Phone; Serial: UBV0218926001029

Communication System: UID 0, LTE-FDD BW 20MHz (0); Frequency: 2560 MHz; Duty Cycle: 1:1

Medium: MSL2600; Medium parameters used: $f = 2560$ MHz; $\sigma = 2.03$ S/m; $\epsilon_r = 51.364$; $\rho = 1000$ kg/m³

Phantom section: Flat Section

DASY 5 Configuration:

- Probe: EX3DV4 - SN3789; ConvF(6.96, 6.96, 6.96); Calibrated: 2018-02-08;
- Sensor-Surface: 1.4mm (Mechanical Surface Detection), $z = -2.0, 31.0$
- Electronics: DAE4 Sn896; Calibrated: 2018-11-08
- Phantom: SAM2; Type: SAM; Serial: 1913
- DASY52 52.8.8(1222); SEMCAD X 14.6.10(7331)

Configuration/Body/Area Scan (6x10x1): Measurement grid: $dx=12$ mm, $dy=12$ mm
Maximum value of SAR (measured) = 0.371 W/kg

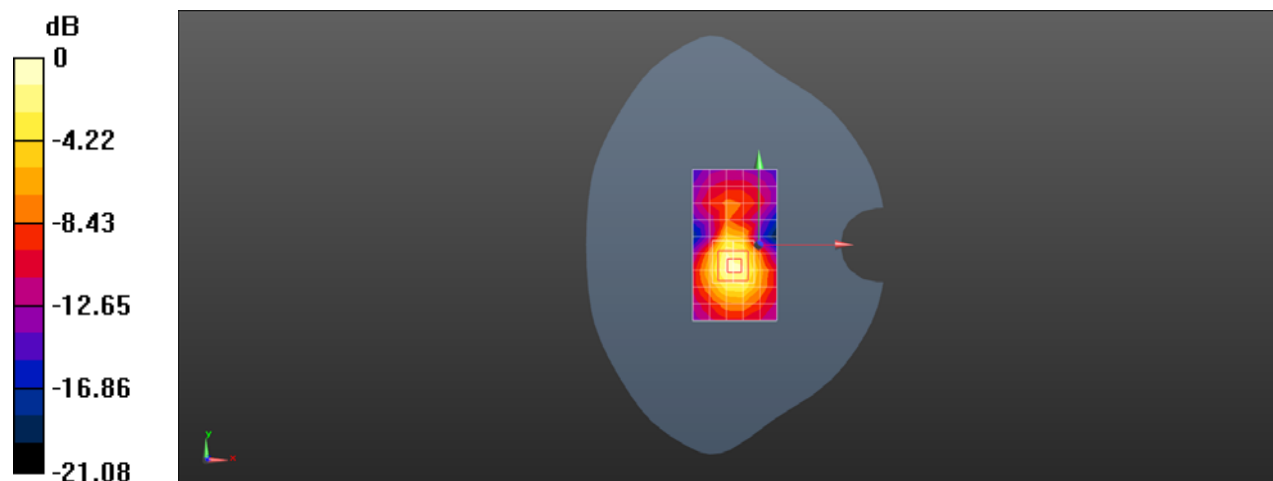
Configuration/Body/Zoom Scan (7x7x7)/Cube 0: Measurement grid: $dx=5$ mm, $dy=5$ mm, $dz=5$ mm

Reference Value = 12.57 V/m; Power Drift = -0.05 dB

Peak SAR (extrapolated) = 0.549 W/kg

SAR(1 g) = 0.296 W/kg; SAR(10 g) = 0.147 W/kg

Maximum value of SAR (measured) = 0.451 W/kg



0 dB = 0.451 W/kg = -3.46 dBW/kg

Test Laboratory: SGS-SAR Lab

**EML-L29 LTE Band 7 20M QPSK PCC 1RB0 21350CH SCC 1RB99 21152CH
Right tilted Ant2 with Battery 2**

DUT: EML-L29; Type: Smart Phone; Serial: UBV0218926001003

Communication System: UID 0, LTE-FDD BW 20MHz (0); Frequency: 2560 MHz;Duty Cycle: 1:1

Medium: HSL2600;Medium parameters used: $f = 2560$ MHz; $\sigma = 1.925$ S/m; $\epsilon_r = 39.806$; $\rho = 1000$ kg/m³

Phantom section: Right Section

DASY 5 Configuration:

- Probe: EX3DV4 - SN3962; ConvF(7.52, 7.52, 7.52); Calibrated: 2018-01-11;
- Sensor-Surface: 1.4mm (Mechanical Surface Detection), $z = -2.0, 31.0$
- Electronics: DAE4 Sn1428; Calibrated: 2018-01-17
- Phantom: SAM 3; Type: SAM; Serial: 1912
- DASY52 52.8.8(1222); SEMCAD X 14.6.10(7331)

Configuration/Head/Area Scan (9x16x1): Measurement grid: $dx=12$ mm, $dy=12$ mm
Maximum value of SAR (measured) = 0.674 W/kg

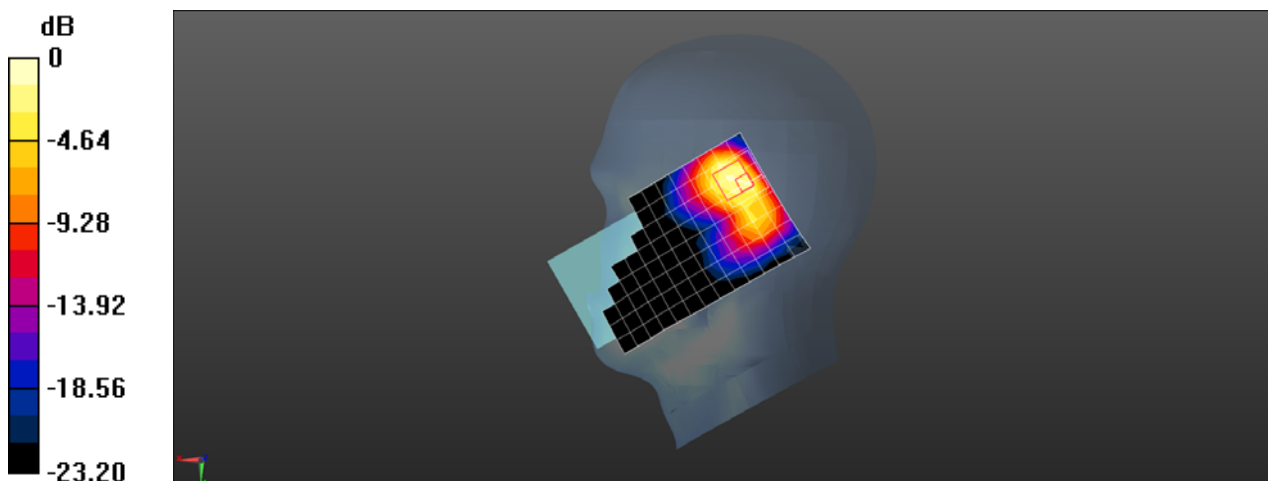
Configuration/Head/Zoom Scan (7x7x7)/Cube 0: Measurement grid: $dx=5$ mm, $dy=5$ mm, $dz=5$ mm

Reference Value = 12.79 V/m; Power Drift = 0.07 dB

Peak SAR (extrapolated) = 1.15 W/kg

SAR(1 g) = 0.474 W/kg; SAR(10 g) = 0.233 W/kg

Maximum value of SAR (measured) = 0.902 W/kg



0 dB = 0.902 W/kg = -0.45 dBW/kg

Test Laboratory: SGS-SAR Lab

**EML-L29 LTE Band 7 20M QPSK PCC 1RB0 21350CH SCC 1RB99 21152CH
Back side 15mm Ant2**

DUT: EML-L29; Type: Smart Phone; Serial: UBV0218926001029

Communication System: UID 0, LTE-FDD BW 20MHz (0); Frequency: 2560 MHz; Duty Cycle: 1:1

Medium: MSL2600; Medium parameters used: $f = 2560$ MHz; $\sigma = 2.03$ S/m; $\epsilon_r = 51.364$; $\rho = 1000$ kg/m³

Phantom section: Flat Section

DASY 5 Configuration:

- Probe: EX3DV4 - SN3789; ConvF(6.96, 6.96, 6.96); Calibrated: 2018-02-08;
- Sensor-Surface: 1.4mm (Mechanical Surface Detection), $z = -2.0, 31.0$
- Electronics: DAE4 Sn896; Calibrated: 2018-11-08
- Phantom: SAM2; Type: SAM; Serial: 1913
- DASY52 52.8.8(1222); SEMCAD X 14.6.10(7331)

Configuration/Body/Area Scan (9x16x1): Measurement grid: $dx=12$ mm, $dy=12$ mm
Maximum value of SAR (measured) = 0.134 W/kg

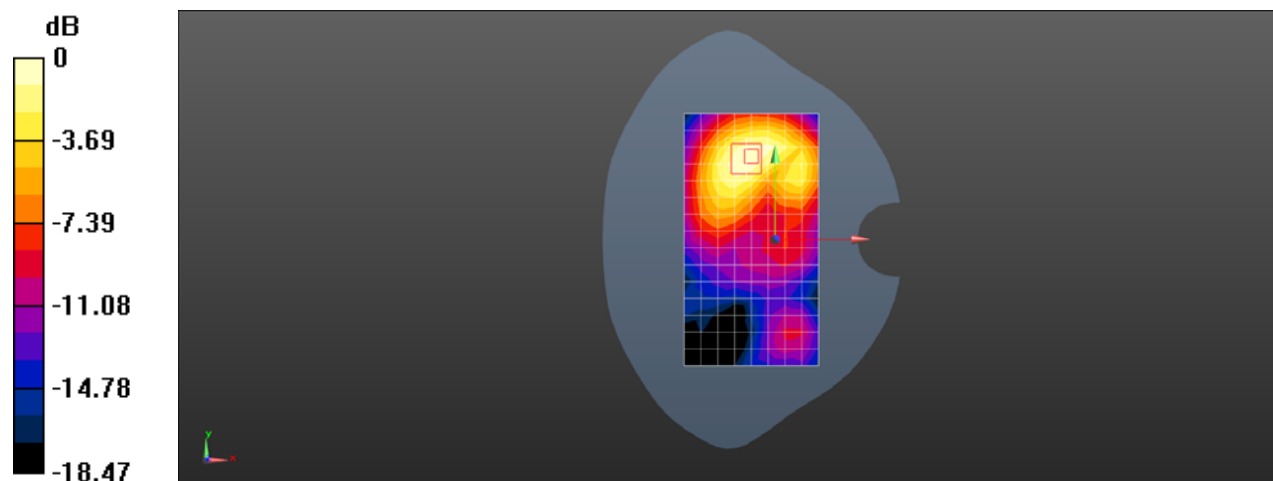
Configuration/Body/Zoom Scan (7x7x7)/Cube 0: Measurement grid: $dx=5$ mm, $dy=5$ mm, $dz=5$ mm

Reference Value = 2.566 V/m; Power Drift = -0.01 dB

Peak SAR (extrapolated) = 0.171 W/kg

SAR(1 g) = 0.095 W/kg; SAR(10 g) = 0.054 W/kg

Maximum value of SAR (measured) = 0.141 W/kg



0 dB = 0.141 W/kg = -8.51 dBW/kg

Test Laboratory: SGS-SAR Lab

**EML-L29 LTE Band 7 20M QPSK PCC 1RB0 21350CH SCC 1RB99 21152CH
Top side 10mm with 2.4G WIFI Ant2**

DUT: EML-L29; Type: Smart Phone; Serial: UBV0218926001029

Communication System: UID 0, LTE-FDD BW 20MHz (0); Frequency: 2560 MHz; Duty Cycle: 1:1

Medium: MSL2600; Medium parameters used: $f = 2560$ MHz; $\sigma = 2.03$ S/m; $\epsilon_r = 51.364$; $\rho = 1000$ kg/m³

Phantom section: Flat Section

DASY 5 Configuration:

- Probe: EX3DV4 - SN3789; ConvF(6.96, 6.96, 6.96); Calibrated: 2018-02-08;
- Sensor-Surface: 1.4mm (Mechanical Surface Detection), $z = -2.0, 31.0$
- Electronics: DAE4 Sn896; Calibrated: 2018-11-08
- Phantom: SAM2; Type: SAM; Serial: 1913
- DASY52 52.8.8(1222); SEMCAD X 14.6.10(7331)

Configuration/Body/Area Scan (6x10x1): Measurement grid: $dx=12$ mm, $dy=12$ mm
Maximum value of SAR (measured) = 0.291 W/kg

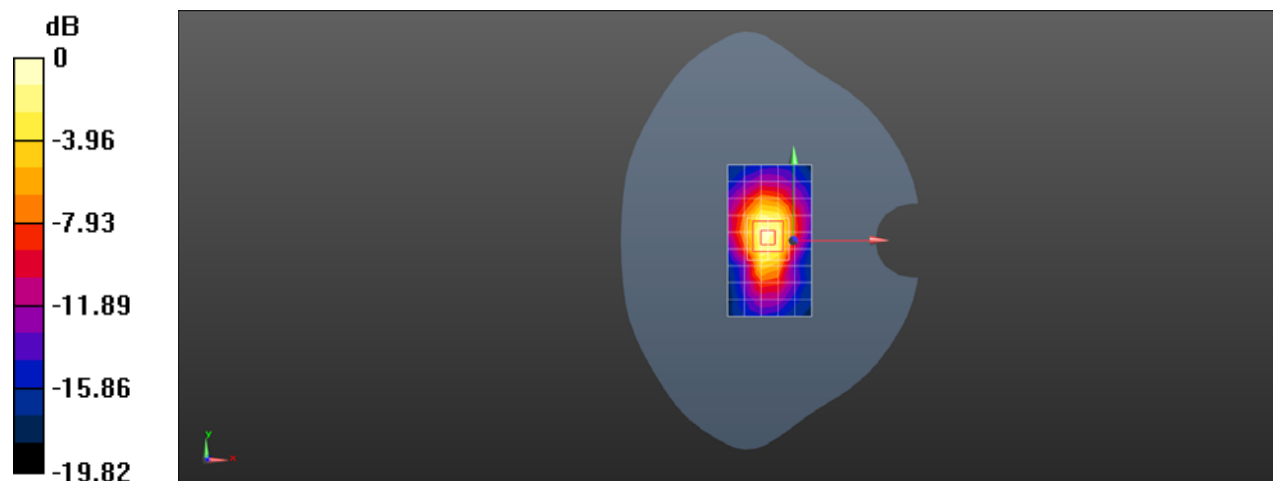
Configuration/Body/Zoom Scan (7x7x7)/Cube 0: Measurement grid: $dx=5$ mm, $dy=5$ mm, $dz=5$ mm

Reference Value = 13.73 V/m; Power Drift = -0.11 dB

Peak SAR (extrapolated) = 0.409 W/kg

SAR(1 g) = 0.215 W/kg; SAR(10 g) = 0.108 W/kg

Maximum value of SAR (measured) = 0.337 W/kg



0 dB = 0.337 W/kg = -4.72 dBW/kg

Test Laboratory: SGS-SAR Lab

EML-L29 LTE Band 38 20M QPSK PCC 1RB0 38150CH SCC 1RB99 37952CH Right cheek Ant1

DUT: EML-L29; Type: Smart Phone; Serial: UBV0218926001029

Communication System: UID 0, LTE-TDD BW 20MHz (0); Frequency: 2610 MHz; Duty Cycle: 1:1.57906

Medium: HSL2600; Medium parameters used: $f = 2610$ MHz; $\sigma = 1.978$ S/m; $\epsilon_r = 39.639$; $\rho = 1000$ kg/m³

Phantom section: Right Section

DASY 5 Configuration:

- Probe: EX3DV4 - SN3962; ConvF(7.52, 7.52, 7.52); Calibrated: 2018-01-11;
- Sensor-Surface: 1.4mm (Mechanical Surface Detection), $z = -2.0, 31.0$
- Electronics: DAE4 Sn1428; Calibrated: 2018-01-17
- Phantom: SAM 3; Type: SAM; Serial: 1912
- DASY52 52.8.8(1222); SEMCAD X 14.6.10(7331)

Configuration/Head/Area Scan (9x16x1): Measurement grid: $dx=12$ mm, $dy=12$ mm

Maximum value of SAR (measured) = 0.0611 W/kg

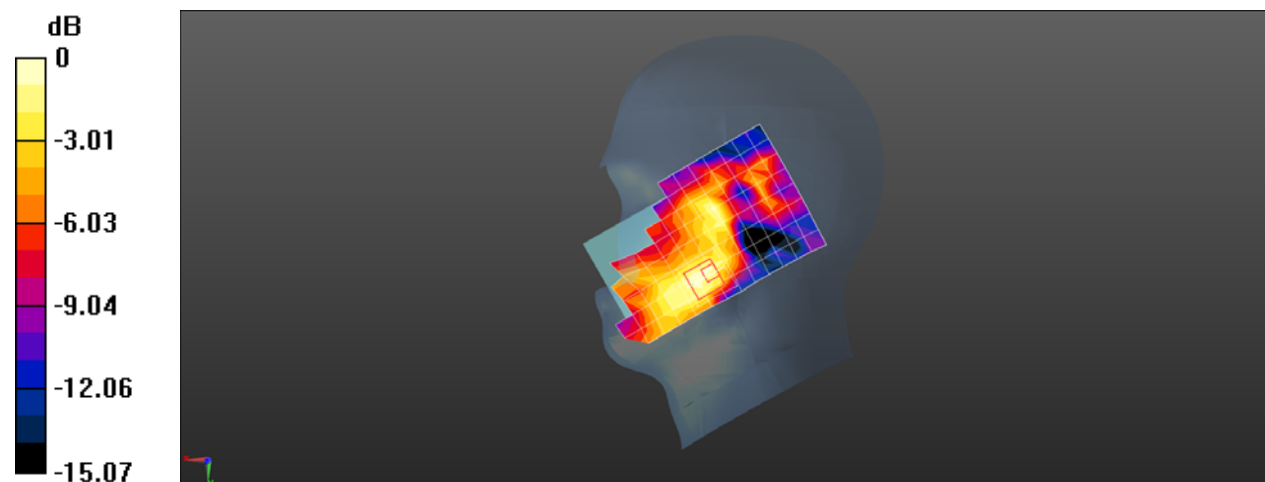
Configuration/Head/Zoom Scan (7x7x7)/Cube 0: Measurement grid: $dx=5$ mm, $dy=5$ mm, $dz=5$ mm

Reference Value = 2.797 V/m; Power Drift = -0.11 dB

Peak SAR (extrapolated) = 0.0690 W/kg

SAR(1 g) = 0.038 W/kg; SAR(10 g) = 0.021 W/kg

Maximum value of SAR (measured) = 0.0563 W/kg



0 dB = 0.0563 W/kg = -12.49 dBW/kg

Test Laboratory: SGS-SAR Lab

**EML-L29 LTE Band 38 20M QPSK PCC 1RB0 38150CH SCC 1RB99 37952CH
Back side 15mm Ant1**

DUT: EML-L29; Type: Smart Phone; Serial: UBV0218926001029

Communication System: UID 0, LTE-TDD BW 20MHz (0); Frequency: 2610 MHz;Duty Cycle:
1:1.57906

Medium: MSL2600;Medium parameters used: $f = 2610$ MHz; $\sigma = 2.084$ S/m; $\epsilon_r = 51.239$; $\rho = 1000$
kg/m³

Phantom section: Flat Section

DASY 5 Configuration:

- Probe: EX3DV4 - SN3789; ConvF(6.96, 6.96, 6.96); Calibrated: 2018-02-08;
- Sensor-Surface: 1.4mm (Mechanical Surface Detection), $z = -2.0, 31.0$
- Electronics: DAE4 Sn896; Calibrated: 2018-11-08
- Phantom: SAM2; Type: SAM; Serial: 1913
- DASY52 52.8.8(1222); SEMCAD X 14.6.10(7331)

Configuration/Body/Area Scan (9x16x1): Measurement grid: $dx=12$ mm, $dy=12$ mm

Maximum value of SAR (measured) = 0.207 W/kg

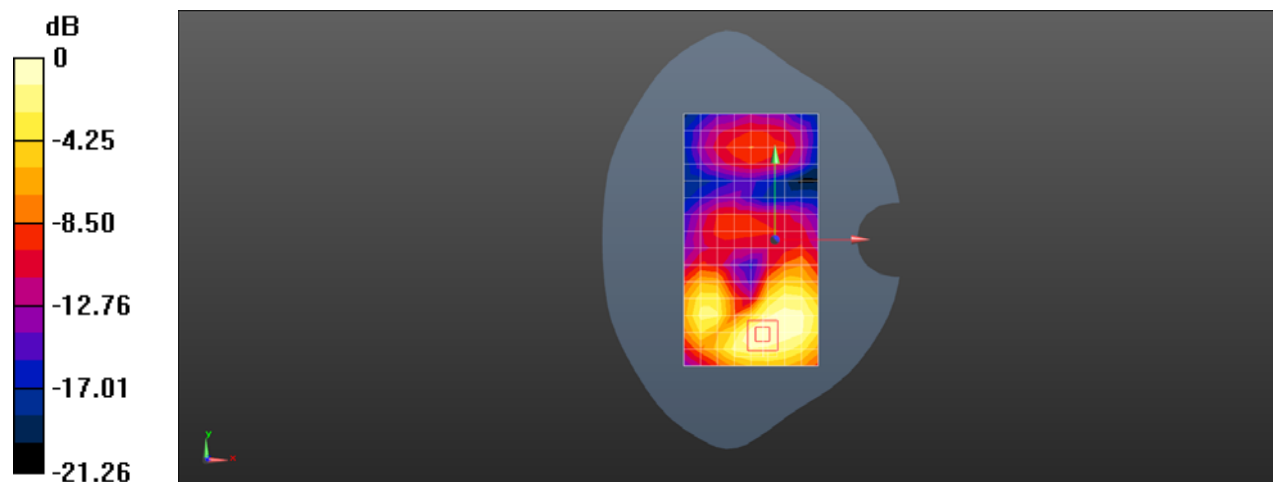
Configuration/Body/Zoom Scan (7x7x7)/Cube 0: Measurement grid: $dx=5$ mm, $dy=5$ mm,
 $dz=5$ mm

Reference Value = 3.218 V/m; Power Drift = 0.09 dB

Peak SAR (extrapolated) = 0.260 W/kg

SAR(1 g) = 0.140 W/kg; SAR(10 g) = 0.078 W/kg

Maximum value of SAR (measured) = 0.214 W/kg



0 dB = 0.214 W/kg = -6.70 dBW/kg

Test Laboratory: SGS-SAR Lab

**EML-L29 LTE Band 38 20M QPSK PCC 1RB0 38150CH SCC 1RB99 37952CH
Bottom side 10mm Ant1 with Battery 2**

DUT: EML-L29; Type: Smart Phone; Serial: UBV0218926001003

Communication System: UID 0, LTE-TDD BW 20MHz (0); Frequency: 2610 MHz; Duty Cycle: 1:1.57906

Medium: MSL2600; Medium parameters used: $f = 2610$ MHz; $\sigma = 2.084$ S/m; $\epsilon_r = 51.239$; $\rho = 1000$ kg/m³

Phantom section: Flat Section

DASY 5 Configuration:

- Probe: EX3DV4 - SN3789; ConvF(6.96, 6.96, 6.96); Calibrated: 2018-02-08;
- Sensor-Surface: 1.4mm (Mechanical Surface Detection), $z = -2.0, 31.0$
- Electronics: DAE4 Sn896; Calibrated: 2018-11-08
- Phantom: SAM2; Type: SAM; Serial: 1913
- DASY52 52.8.8(1222); SEMCAD X 14.6.10(7331)

Configuration/Body/Area Scan (6x10x1): Measurement grid: $dx=12$ mm, $dy=12$ mm

Maximum value of SAR (measured) = 0.504 W/kg

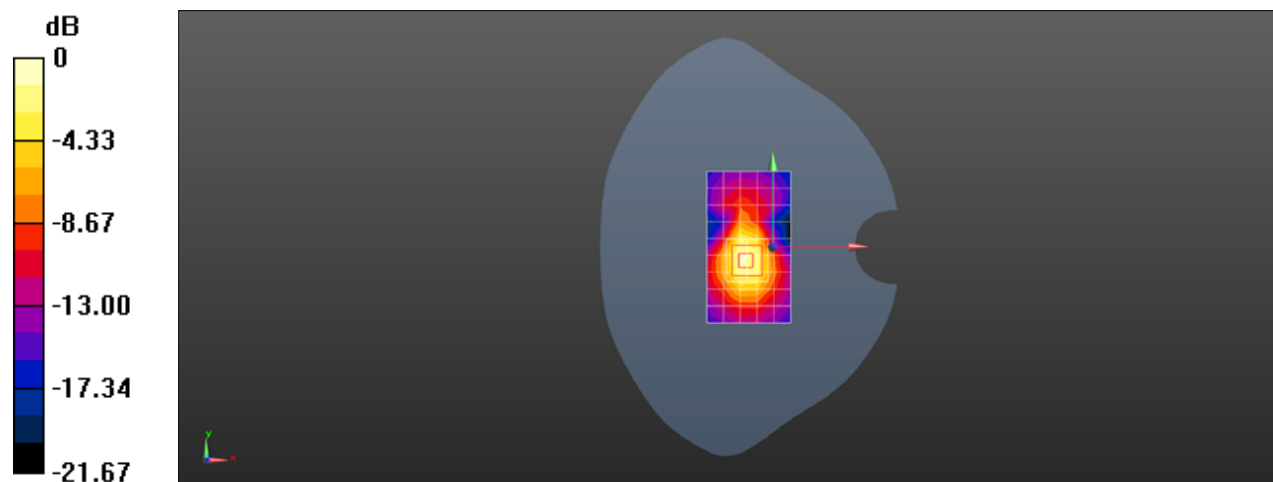
Configuration/Body/Zoom Scan (7x7x7)/Cube 0: Measurement grid: $dx=5$ mm, $dy=5$ mm, $dz=5$ mm

Reference Value = 16.17 V/m; Power Drift = -0.02 dB

Peak SAR (extrapolated) = 0.740 W/kg

SAR(1 g) = 0.380 W/kg; SAR(10 g) = 0.184 W/kg

Maximum value of SAR (measured) = 0.607 W/kg



0 dB = 0.607 W/kg = -2.17 dBW/kg

Test Laboratory: SGS-SAR Lab

**EML-L29 LTE Band 38 20M QPSK PCC 1RB0 38150CH SCC 1RB99 37952CH
Right tilted Ant2 with Battery 2**

DUT: EML-L29; Type: Smart Phone; Serial: UBV0218926001003

Communication System: UID 0, LTE-TDD BW 20MHz (0); Frequency: 2610 MHz; Duty Cycle: 1:1.57906

Medium: HSL2600; Medium parameters used: $f = 2610$ MHz; $\sigma = 1.978$ S/m; $\epsilon_r = 39.639$; $\rho = 1000$ kg/m³

Phantom section: Right Section

DASY 5 Configuration:

- Probe: EX3DV4 - SN3962; ConvF(7.52, 7.52, 7.52); Calibrated: 2018-01-11;
- Sensor-Surface: 1.4mm (Mechanical Surface Detection), $z = -2.0, 31.0$
- Electronics: DAE4 Sn1428; Calibrated: 2018-01-17
- Phantom: SAM 3; Type: SAM; Serial: 1912
- DASY52 52.8.8(1222); SEMCAD X 14.6.10(7331)

Configuration/Head/Area Scan (9x16x1): Measurement grid: $dx=12$ mm, $dy=12$ mm

Maximum value of SAR (measured) = 0.735 W/kg

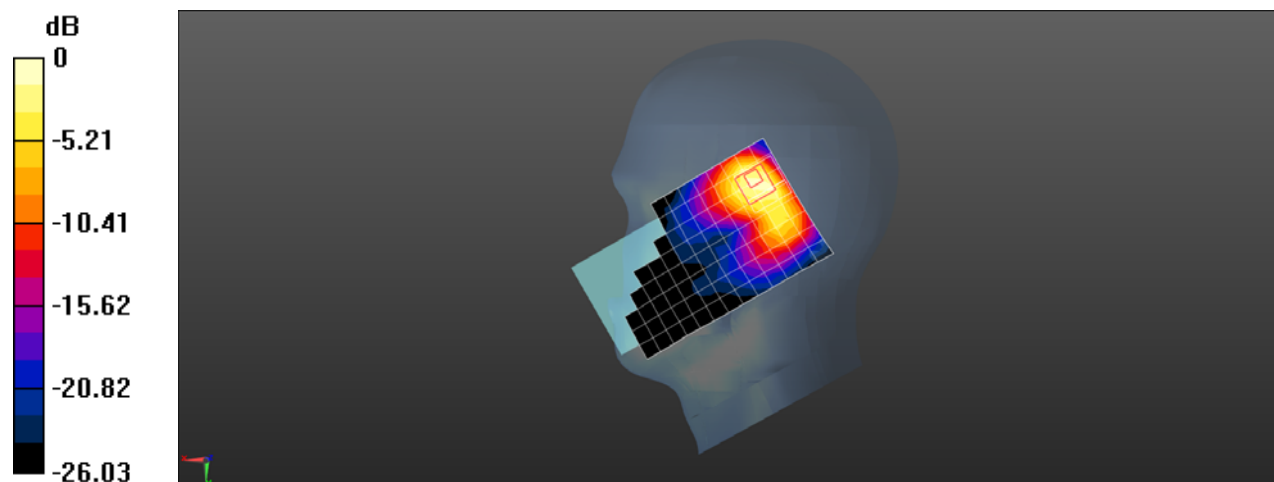
Configuration/Head/Zoom Scan (7x7x7)/Cube 0: Measurement grid: $dx=5$ mm, $dy=5$ mm, $dz=5$ mm

Reference Value = 11.90 V/m; Power Drift = 0.05 dB

Peak SAR (extrapolated) = 1.19 W/kg

SAR(1 g) = 0.490 W/kg; SAR(10 g) = 0.235 W/kg

Maximum value of SAR (measured) = 0.919 W/kg



0 dB = 0.919 W/kg = -0.37 dBW/kg

Test Laboratory: SGS-SAR Lab

**EML-L29 LTE Band 38 20M QPSK PCC 1RB0 38150CH SCC 1RB99 37952CH
Back side 15mm Ant2 with Battery 2**

DUT: EML-L29; Type: Smart Phone; Serial: UBV0218926001003

Communication System: UID 0, LTE-TDD BW 20MHz (0); Frequency: 2610 MHz; Duty Cycle: 1:1.57906

Medium: MSL2600; Medium parameters used: $f = 2610$ MHz; $\sigma = 2.084$ S/m; $\epsilon_r = 51.239$; $\rho = 1000$ kg/m³

Phantom section: Flat Section

DASY 5 Configuration:

- Probe: EX3DV4 - SN3789; ConvF(6.96, 6.96, 6.96); Calibrated: 2018-02-08;
- Sensor-Surface: 1.4mm (Mechanical Surface Detection), $z = -2.0, 31.0$
- Electronics: DAE4 Sn896; Calibrated: 2018-11-08
- Phantom: SAM2; Type: SAM; Serial: 1913
- DASY52 52.8.8(1222); SEMCAD X 14.6.10(7331)

Configuration/Body/Area Scan (9x16x1): Measurement grid: $dx=12$ mm, $dy=12$ mm

Maximum value of SAR (measured) = 0.147 W/kg

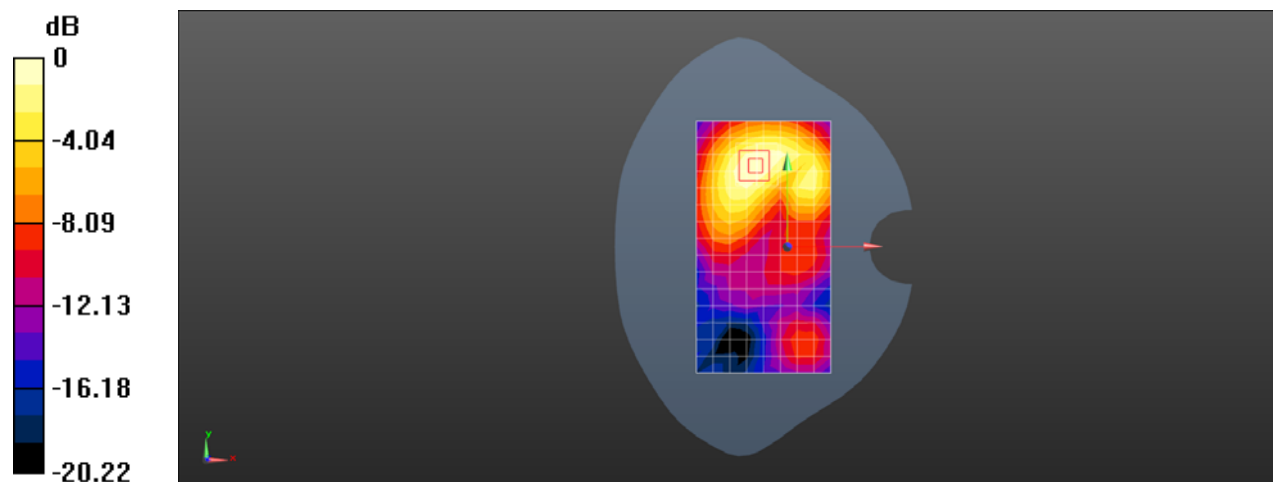
Configuration/Body/Zoom Scan (7x7x7)/Cube 0: Measurement grid: $dx=5$ mm, $dy=5$ mm, $dz=5$ mm

Reference Value = 2.275 V/m; Power Drift = 0.02 dB

Peak SAR (extrapolated) = 0.185 W/kg

SAR(1 g) = 0.104 W/kg; SAR(10 g) = 0.059 W/kg

Maximum value of SAR (measured) = 0.154 W/kg



0 dB = 0.154 W/kg = -8.12 dBW/kg

Test Laboratory: SGS-SAR Lab

**EML-L29 LTE Band 38 20M QPSK PCC 1RB0 38150CH SCC 1RB99 37952CH
Top side 10mm with 2.4G WIFI Ant2 with Battery 2**

DUT: EML-L29; Type: Smart Phone; Serial: UBV0218926001003

Communication System: UID 0, LTE-TDD BW 20MHz (0); Frequency: 2610 MHz; Duty Cycle: 1:1.57906

Medium: MSL2600; Medium parameters used: $f = 2610$ MHz; $\sigma = 2.084$ S/m; $\epsilon_r = 51.239$; $\rho = 1000$ kg/m³

Phantom section: Flat Section

DASY 5 Configuration:

- Probe: EX3DV4 - SN3789; ConvF(6.96, 6.96, 6.96); Calibrated: 2018-02-08;
- Sensor-Surface: 1.4mm (Mechanical Surface Detection), $z = -2.0, 31.0$
- Electronics: DAE4 Sn896; Calibrated: 2018-11-08
- Phantom: SAM2; Type: SAM; Serial: 1913
- DASY52 52.8.8(1222); SEMCAD X 14.6.10(7331)

Configuration/Body/Area Scan (6x10x1): Measurement grid: $dx=12$ mm, $dy=12$ mm

Maximum value of SAR (measured) = 0.309 W/kg

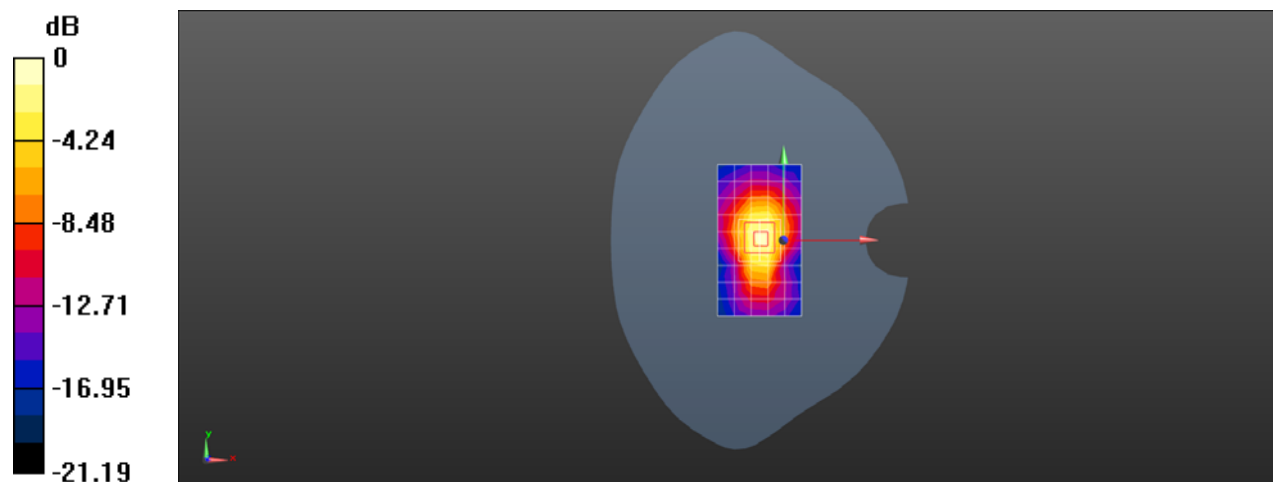
Configuration/Body/Zoom Scan (7x7x7)/Cube 0: Measurement grid: $dx=5$ mm, $dy=5$ mm, $dz=5$ mm

Reference Value = 14.27 V/m; Power Drift = 0.04 dB

Peak SAR (extrapolated) = 0.476 W/kg

SAR(1 g) = 0.241 W/kg; SAR(10 g) = 0.120 W/kg

Maximum value of SAR (measured) = 0.389 W/kg



0 dB = 0.389 W/kg = -4.10 dBW/kg

Test Laboratory: SGS-SAR Lab

EML-L29 LTE Band 41 20M QPSK 1RB50 41140CH Left cheek Ant1

DUT: EML-L29; Type: Smart Phone; Serial: UBV0218926001029

Communication System: UID 0, LTE-TDD BW 20MHz (0); Frequency: 2645 MHz; Duty Cycle: 1:1.57906

Medium: HSL2600; Medium parameters used: $f = 2645$ MHz; $\sigma = 2.024$ S/m; $\epsilon_r = 39.529$; $\rho = 1000$ kg/m³

Phantom section: Left Section

DASY 5 Configuration:

- Probe: EX3DV4 - SN3962; ConvF(7.52, 7.52, 7.52); Calibrated: 2018-01-11;
- Sensor-Surface: 1.4mm (Mechanical Surface Detection), $z = -2.0, 31.0$
- Electronics: DAE4 Sn1428; Calibrated: 2018-01-17
- Phantom: SAM 3; Type: SAM; Serial: 1912
- DASY52 52.8.8(1222); SEMCAD X 14.6.10(7331)

Configuration/Head/Area Scan (9x16x1): Measurement grid: $dx=12$ mm, $dy=12$ mm
Maximum value of SAR (measured) = 0.0750 W/kg

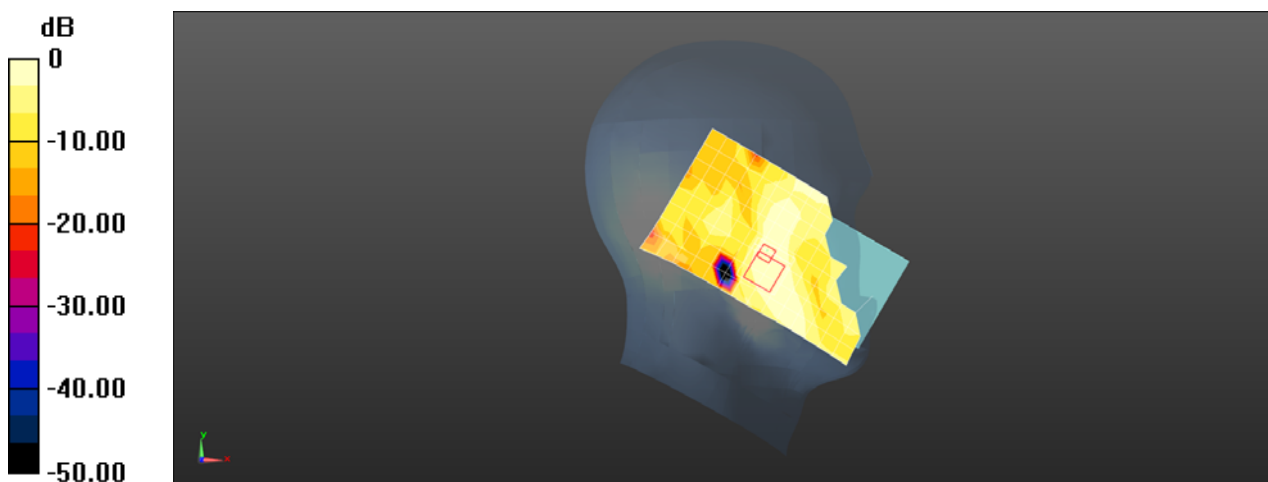
Configuration/Head/Zoom Scan (7x7x7)/Cube 0: Measurement grid: $dx=5$ mm, $dy=5$ mm, $dz=5$ mm

Reference Value = 2.831 V/m; Power Drift = -0.06 dB

Peak SAR (extrapolated) = 0.174 W/kg

SAR(1 g) = 0.044 W/kg; SAR(10 g) = 0.024 W/kg

Maximum value of SAR (measured) = 0.0633 W/kg



0 dB = 0.0633 W/kg = -11.99 dBW/kg

Test Laboratory: SGS-SAR Lab

EML-L29 LTE Band 41 20M QPSK 1RB50 40540CH Back side 15mm Ant1 with Battery 3

DUT: EML-L29; Type: Smart Phone; Serial: UBV0218926001043

Communication System: UID 0, LTE-TDD BW 20MHz (0); Frequency: 2585 MHz; Duty Cycle: 1:1.57906

Medium: MSL2600; Medium parameters used: $f = 2585$ MHz; $\sigma = 2.056$ S/m; $\epsilon_r = 51.314$; $\rho = 1000$ kg/m³

Phantom section: Flat Section

DASY 5 Configuration:

- Probe: EX3DV4 - SN3789; ConvF(6.96, 6.96, 6.96); Calibrated: 2018-02-08;
- Sensor-Surface: 1.4mm (Mechanical Surface Detection), $z = -2.0, 31.0$
- Electronics: DAE4 Sn896; Calibrated: 2018-11-08
- Phantom: SAM2; Type: SAM; Serial: 1913
- DASY52 52.8.8(1222); SEMCAD X 14.6.10(7331)

Configuration/Body/Area Scan (9x16x1): Measurement grid: $dx=12$ mm, $dy=12$ mm

Maximum value of SAR (measured) = 0.316 W/kg

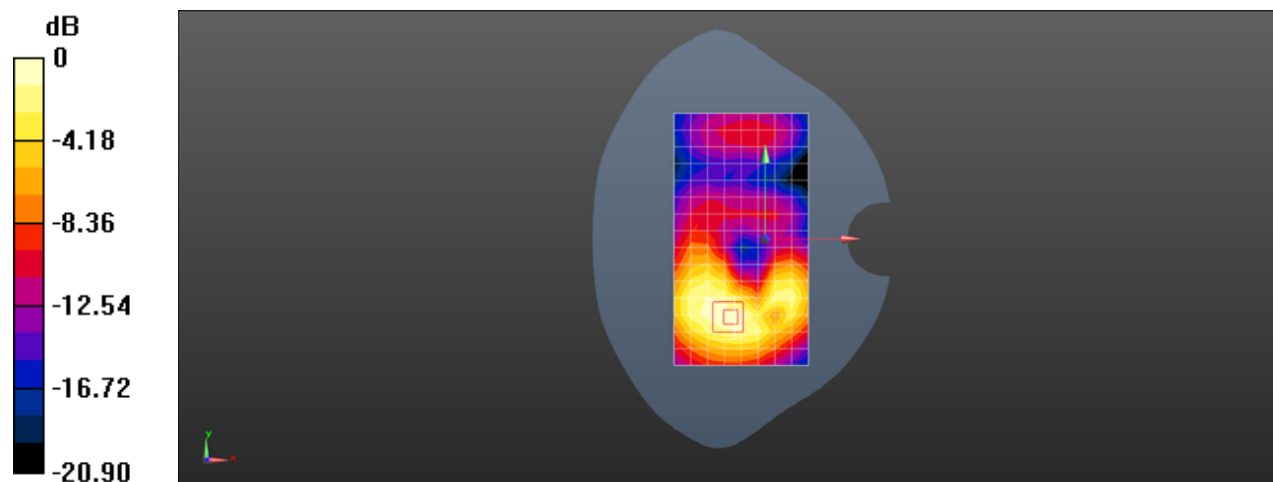
Configuration/Body/Zoom Scan (7x7x7)/Cube 0: Measurement grid: $dx=5$ mm, $dy=5$ mm, $dz=5$ mm

Reference Value = 2.263 V/m; Power Drift = -0.03 dB

Peak SAR (extrapolated) = 0.379 W/kg

SAR(1 g) = 0.206 W/kg; SAR(10 g) = 0.114 W/kg

Maximum value of SAR (measured) = 0.312 W/kg



0 dB = 0.312 W/kg = -5.06 dBW/kg

Test Laboratory: SGS-SAR Lab

EML-L29 LTE Band 41 20M QPSK 50RB25 41140CH Bottom side 10mm Ant1 with Battery 3

DUT: EML-L29; Type: Smart Phone; Serial: UBV0218926001043

Communication System: UID 0, LTE-TDD BW 20MHz (0); Frequency: 2645 MHz; Duty Cycle: 1:1.57906

Medium: MSL2600; Medium parameters used: $f = 2645$ MHz; $\sigma = 2.131$ S/m; $\epsilon_r = 51.152$; $\rho = 1000$ kg/m³

Phantom section: Flat Section

DASY 5 Configuration:

- Probe: EX3DV4 - SN3789; ConvF(6.96, 6.96, 6.96); Calibrated: 2018-02-08;
- Sensor-Surface: 1.4mm (Mechanical Surface Detection), $z = -2.0, 31.0$
- Electronics: DAE4 Sn896; Calibrated: 2018-11-08
- Phantom: SAM2; Type: SAM; Serial: 1913
- DASY52 52.8.8(1222); SEMCAD X 14.6.10(7331)

Configuration/Body/Area Scan (6x10x1): Measurement grid: $dx=12$ mm, $dy=12$ mm

Maximum value of SAR (measured) = 0.694 W/kg

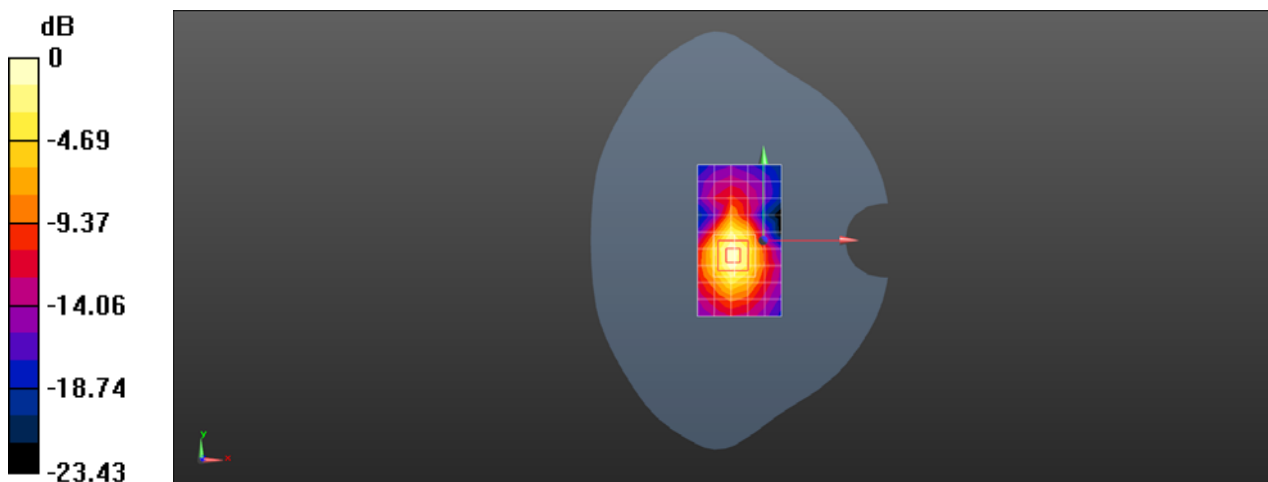
Configuration/Body/Zoom Scan (7x7x7)/Cube 0: Measurement grid: $dx=5$ mm, $dy=5$ mm, $dz=5$ mm

Reference Value = 16.66 V/m; Power Drift = -0.02 dB

Peak SAR (extrapolated) = 0.940 W/kg

SAR(1 g) = 0.473 W/kg; SAR(10 g) = 0.228 W/kg

Maximum value of SAR (measured) = 0.758 W/kg



0 dB = 0.758 W/kg = -1.20 dBW/kg

Test Laboratory: SGS-SAR Lab

**EML-L29 LTE Band 41 20M QPSK PCC 1RB0 41140CH SCC 1RB99 40942CH
Right tilted Ant2**

DUT: EML-L29; Type: Smart Phone; Serial: UBV0218926001029

Communication System: UID 0, LTE-TDD BW 20MHz (0); Frequency: 2645 MHz; Duty Cycle: 1:1.57906

Medium: HSL2600; Medium parameters used: $f = 2645$ MHz; $\sigma = 2.024$ S/m; $\epsilon_r = 39.529$; $\rho = 1000$ kg/m³

Phantom section: Right Section

DASY 5 Configuration:

- Probe: EX3DV4 - SN3962; ConvF(7.52, 7.52, 7.52); Calibrated: 2018-01-11;
- Sensor-Surface: 1.4mm (Mechanical Surface Detection), $z = -2.0, 31.0$
- Electronics: DAE4 Sn1428; Calibrated: 2018-01-17
- Phantom: SAM 3; Type: SAM; Serial: 1912
- DASY52 52.8.8(1222); SEMCAD X 14.6.10(7331)

Configuration/Head/Area Scan (9x16x1): Measurement grid: $dx=12$ mm, $dy=12$ mm

Maximum value of SAR (measured) = 0.680 W/kg

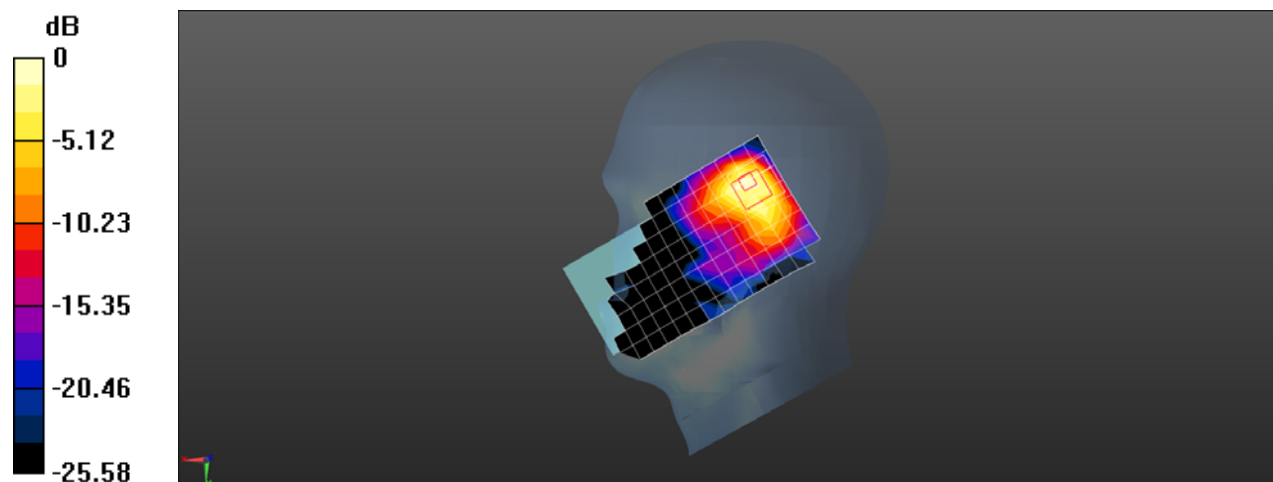
Configuration/Head/Zoom Scan (7x7x7)/Cube 0: Measurement grid: $dx=5$ mm, $dy=5$ mm, $dz=5$ mm

Reference Value = 12.54 V/m; Power Drift = -0.03 dB

Peak SAR (extrapolated) = 0.951 W/kg

SAR(1 g) = 0.409 W/kg; SAR(10 g) = 0.190 W/kg

Maximum value of SAR (measured) = 0.707 W/kg



0 dB = 0.707 W/kg = -1.51 dBW/kg

Test Laboratory: SGS-SAR Lab

EML-L29 LTE Band 41 20M QPSK PCC 1RB0 40540CH SCC 1RB99 40342CH Back side 15mm Ant2

DUT: EML-L29; Type: Smart Phone; Serial: UBV0218926001029

Communication System: UID 0, LTE-TDD BW 20MHz (0); Frequency: 2585 MHz; Duty Cycle: 1:1.57906

Medium: MSL2600; Medium parameters used: $f = 2585$ MHz; $\sigma = 2.056$ S/m; $\epsilon_r = 51.314$; $\rho = 1000$ kg/m³

Phantom section: Flat Section

DASY 5 Configuration:

- Probe: EX3DV4 - SN3789; ConvF(6.96, 6.96, 6.96); Calibrated: 2018-02-08;
- Sensor-Surface: 1.4mm (Mechanical Surface Detection), $z = -2.0, 31.0$
- Electronics: DAE4 Sn896; Calibrated: 2018-11-08
- Phantom: SAM2; Type: SAM; Serial: 1913
- DASY52 52.8.8(1222); SEMCAD X 14.6.10(7331)

Configuration/Body/Area Scan (9x16x1): Measurement grid: $dx=12$ mm, $dy=12$ mm

Maximum value of SAR (measured) = 0.135 W/kg

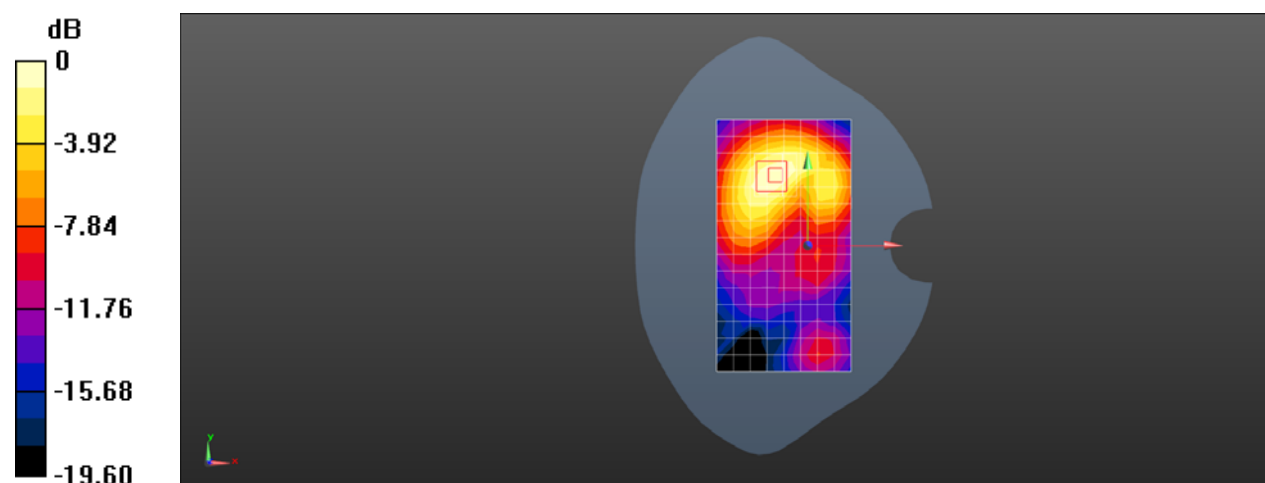
Configuration/Body/Zoom Scan (7x7x7)/Cube 0: Measurement grid: $dx=5$ mm, $dy=5$ mm, $dz=5$ mm

Reference Value = 2.398 V/m; Power Drift = 0.04 dB

Peak SAR (extrapolated) = 0.173 W/kg

SAR(1 g) = 0.096 W/kg; SAR(10 g) = 0.055 W/kg

Maximum value of SAR (measured) = 0.143 W/kg



0 dB = 0.143 W/kg = -8.45 dBW/kg

Test Laboratory: SGS-SAR Lab

EML-L29 LTE Band 41 20M QPSK 50RB50 40840CH Top side side 10mm Ant2

DUT: EML-L29; Type: Smart Phone; Serial: UBV0218926001029

Communication System: UID 0, LTE-TDD BW 20MHz (0); Frequency: 2615 MHz; Duty Cycle: 1:1.57906

Medium: MSL2600; Medium parameters used: $f = 2615$ MHz; $\sigma = 2.091$ S/m; $\epsilon_r = 51.221$; $\rho = 1000$ kg/m³

Phantom section: Flat Section

DASY 5 Configuration:

- Probe: EX3DV4 - SN3789; ConvF(6.96, 6.96, 6.96); Calibrated: 2018-02-08;
- Sensor-Surface: 1.4mm (Mechanical Surface Detection), $z = -2.0, 31.0$
- Electronics: DAE4 Sn896; Calibrated: 2018-11-08
- Phantom: SAM2; Type: SAM; Serial: 1913
- DASY52 52.8.8(1222); SEMCAD X 14.6.10(7331)

Configuration/Body/Area Scan (6x10x1): Measurement grid: $dx=12$ mm, $dy=12$ mm
Maximum value of SAR (measured) = 0.333 W/kg

Configuration/Body/Zoom Scan (7x7x7)/Cube 0: Measurement grid: $dx=5$ mm, $dy=5$ mm, $dz=5$ mm

Reference Value = 13.75 V/m; Power Drift = 0.09 dB

Peak SAR (extrapolated) = 0.503 W/kg

SAR(1 g) = 0.252 W/kg; SAR(10 g) = 0.125 W/kg

Maximum value of SAR (measured) = 0.410 W/kg

