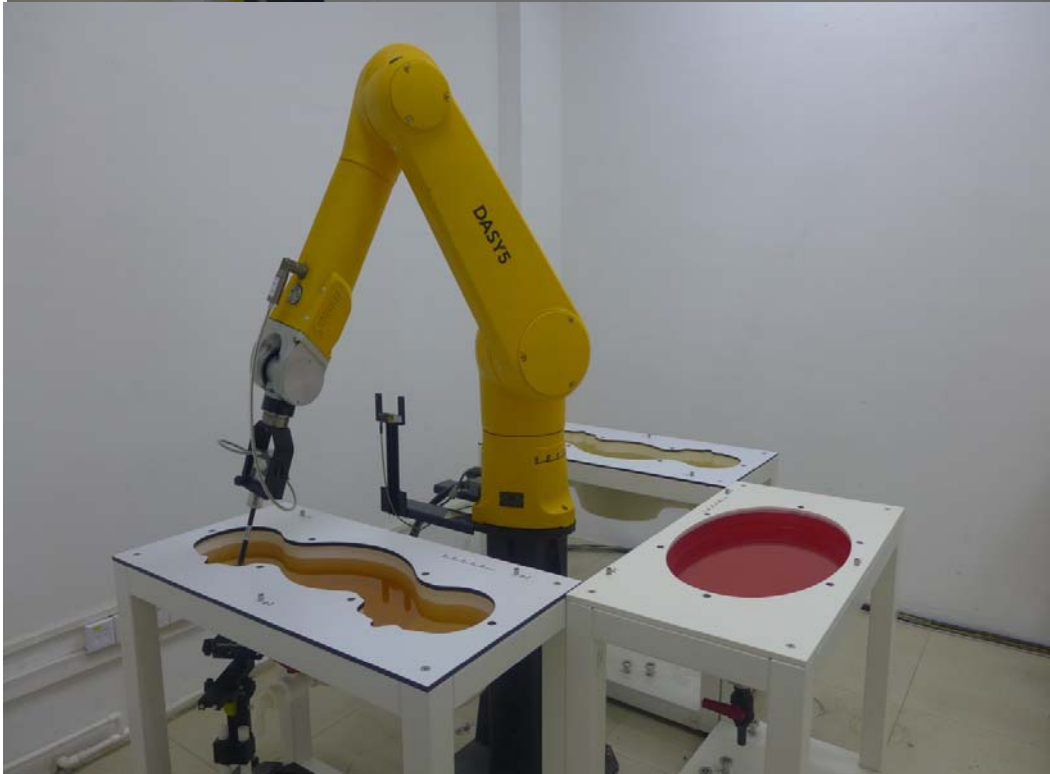


Appendix D

Photographs

1. SAR measurement System
2. Photographs of Tissue Simulate Liquid
3. Photographs of EUT test position
4. EUT Constructional Details

1. SAR measurement System



2. Photographs of Tissue Simulate Liquid

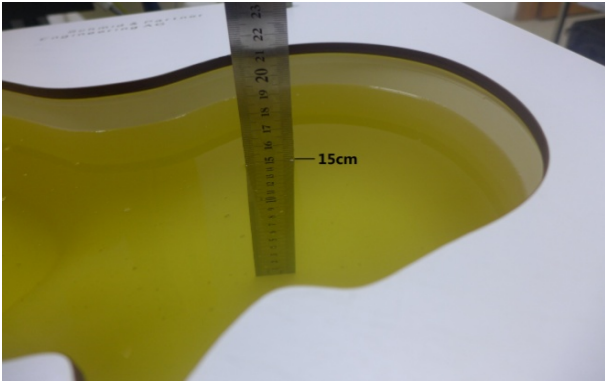
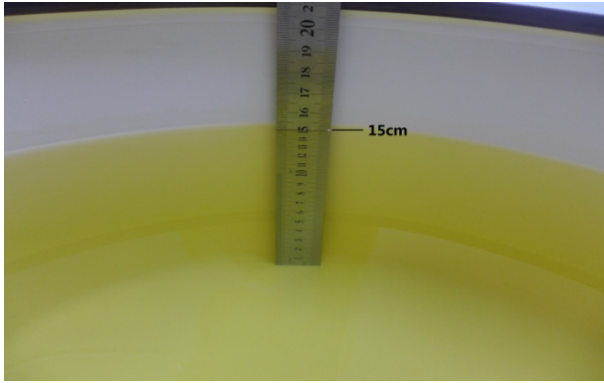
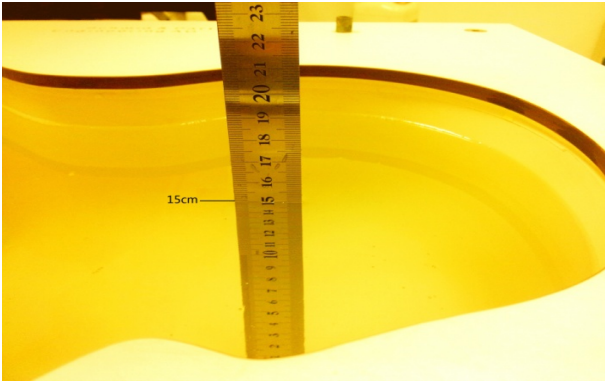
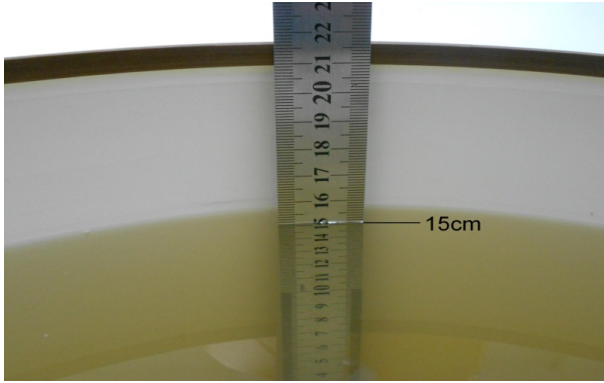
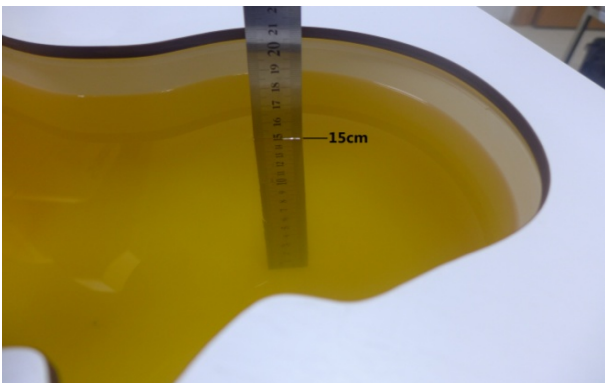
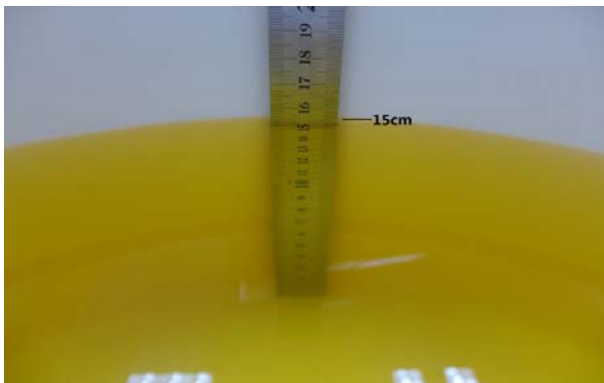
<p>Photo 1: Tissue Simulant Liquid for Head 750</p>	<p>Photo 2: Tissue Simulant Liquid for Body 750</p>
	
<p>Photo 3: Tissue Simulant Liquid for Head 835</p>	<p>Photo 4: Tissue Simulant Liquid for Body 835</p>
	
<p>Photo 5: Tissue Simulant Liquid for Head 1750</p>	<p>Photo 6: Tissue Simulant Liquid for Body 1750</p>
	

Photo 7: Tissue Simulant Liquid for Head 1900

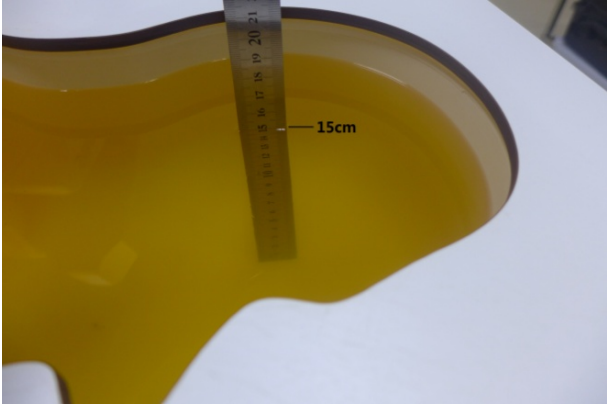


Photo 8: Tissue Simulant Liquid for Body 1900

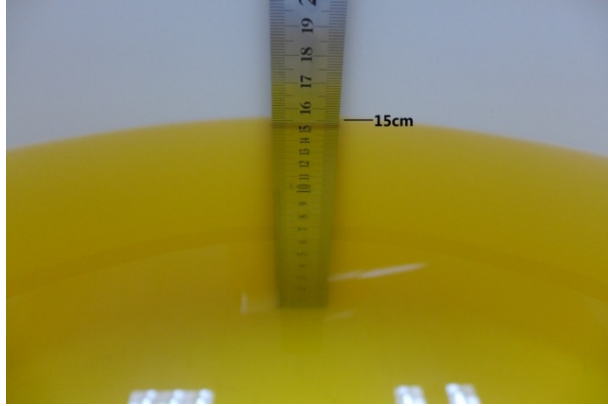


Photo 9: Tissue Simulant Liquid for Head 2300

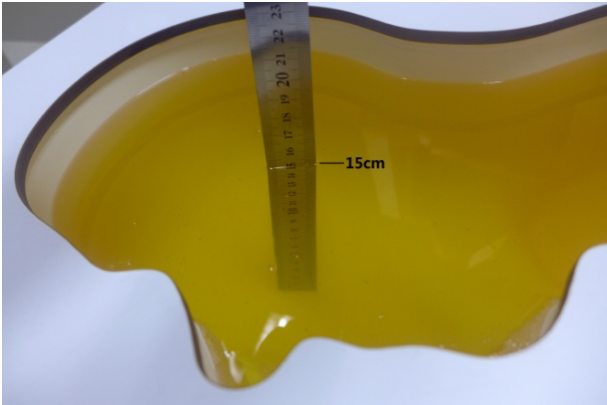


Photo 10: Tissue Simulant Liquid for Body 2300

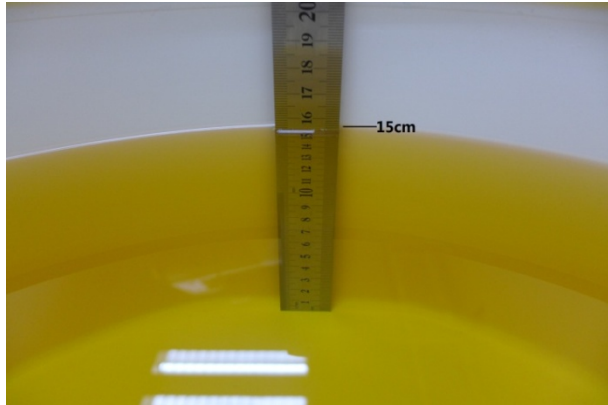


Photo 11: Tissue Simulant Liquid for Head 2450

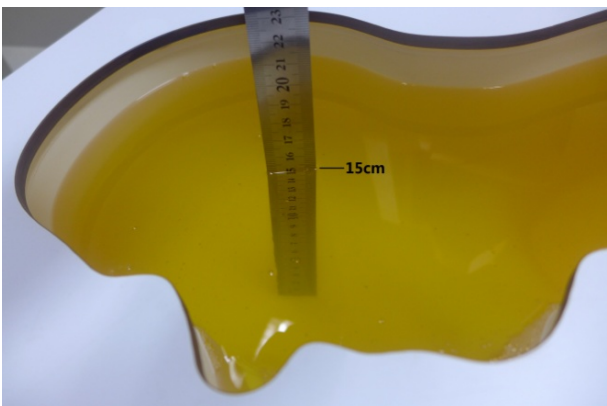


Photo 12: Tissue Simulant Liquid for Body 2450

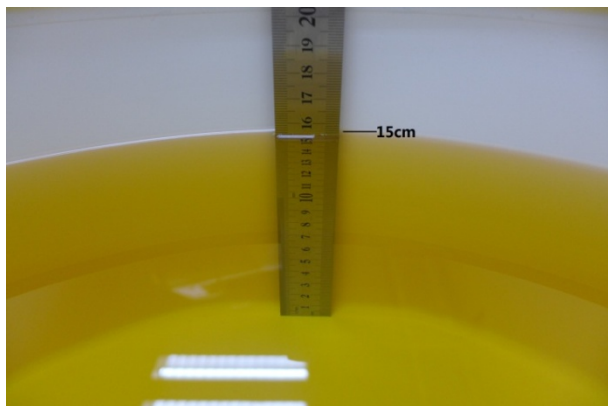


Photo 13: Tissue Simulant Liquid for Head 2600

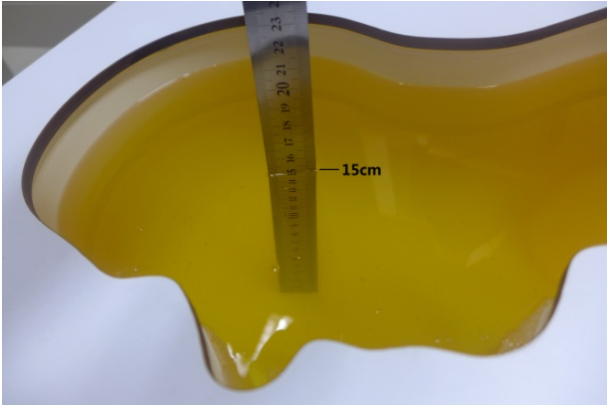


Photo 14: Tissue Simulant Liquid for Body 2600

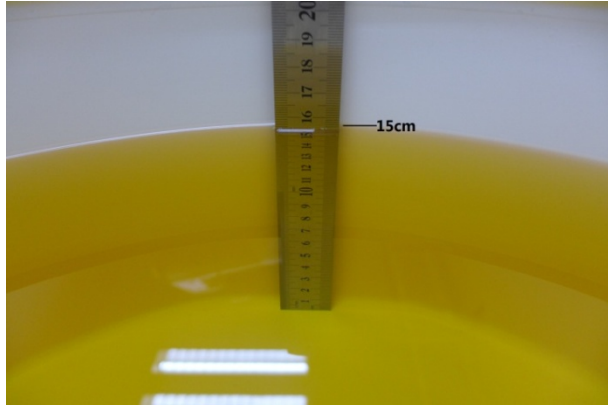


Photo 15: Tissue Simulant Liquid for Head 5G

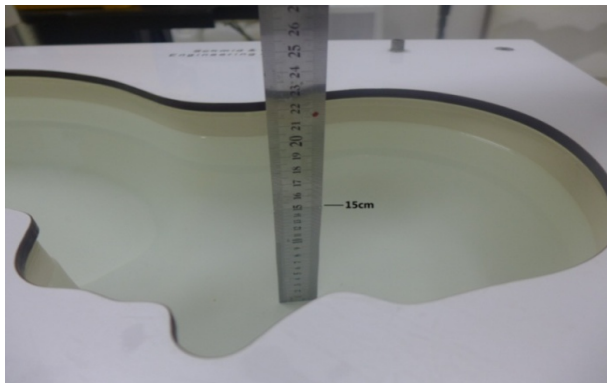
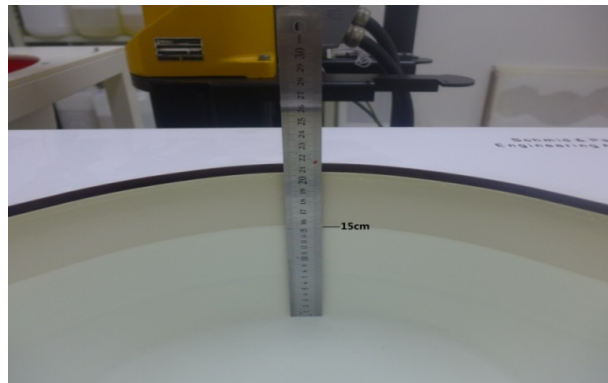


Photo 16: Tissue Simulant Liquid for Body 5G



3. Photographs of EUT test position

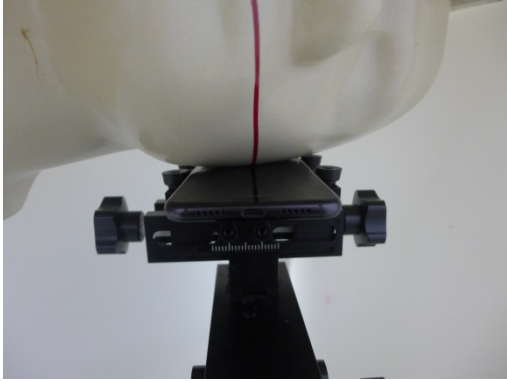
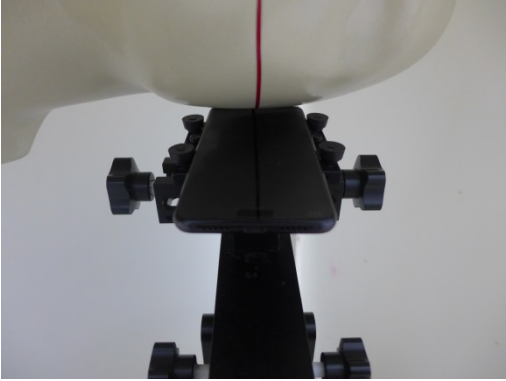
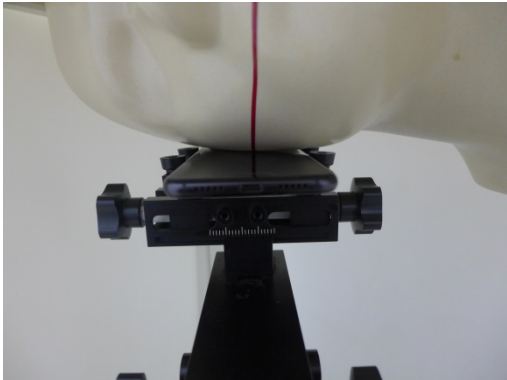
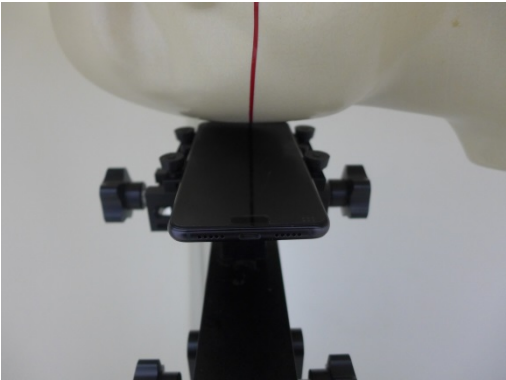


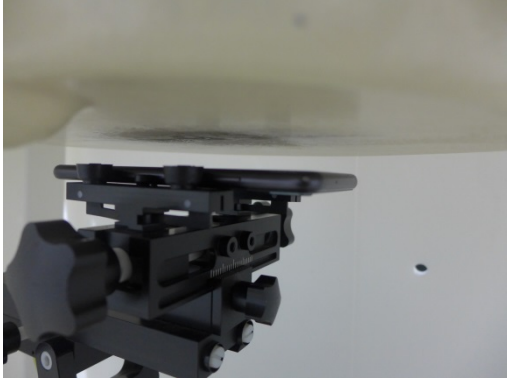





<p>Photo 17: Left touch cheek</p>	<p>Photo 18: Left tilted 15 degree</p>
 A photograph showing a white mannequin head with a red vertical line on the left cheek. A black test fixture is positioned against the cheek, with a smartphone mounted on top. The fixture has several adjustment knobs and a central platform.	 A photograph showing the same setup as Photo 17, but the mannequin head and fixture are tilted to the left by 15 degrees.
<p>Photo 19: Right touch cheek</p>	<p>Photo 20: Right tilted 15 degree</p>
 A photograph showing the white mannequin head with the red vertical line on the right cheek. The black test fixture is positioned against the right cheek with a smartphone on top.	 A photograph showing the same setup as Photo 19, but the mannequin head and fixture are tilted to the right by 15 degrees.
<p>Photo 21: Front side 15mm</p>	<p>Photo 22: Back side 15mm</p>
 A close-up photograph of the black test fixture from a front-side perspective, showing the smartphone mounted on top and the adjustment knobs.	 A close-up photograph of the black test fixture from a back-side perspective, showing the smartphone mounted on top and the adjustment knobs.

Photo 23: Front side 10mm	Photo 24: Back side 10mm
	
Photo 25: Left side 10mm	Photo 26: Right side 10mm
	
Photo 27: Top side 10mm	Photo 28: Bottom side 10mm
	

4. EUT Constructional Details

