

**Appendix B. SAR Measurement Plots**

<b>Table of contents</b>
<b>GSM850 Head</b>
<b>GSM850 Body</b>
<b>GSM1900 Head</b>
<b>GSM1900 Body</b>
<b>UMTS Band II Head</b>
<b>UMTS Band II Body</b>
<b>UMTS Band IV Head</b>
<b>UMTS Band IV Body</b>
<b>UMTS Band V Head</b>
<b>UMTS Band V Body</b>
<b>LTE Band 2 Head</b>
<b>LTE Band 2 Body</b>
<b>LTE Band 4 Head</b>
<b>LTE Band 4 Body</b>
<b>LTE Band 5 Head</b>
<b>LTE Band 5 Body</b>
<b>LTE Band 7 Head</b>
<b>LTE Band 7 Body</b>
<b>LTE Band 12 Head</b>
<b>LTE Band 12 Body</b>
<b>LTE Band 17 Head</b>
<b>LTE Band 17 Body</b>
<b>LTE Band 26 Head</b>
<b>LTE Band 26 Body</b>
<b>LTE Band 38 Head</b>
<b>LTE Band 38 Body</b>
<b>LTE Band 41 Head</b>
<b>LTE Band 41 Body</b>
<b>LTE Band 66 Head</b>
<b>LTE Band 66 Body</b>
<b>WiFi 2.4G Head</b>
<b>WiFi 2.4G Body</b>
<b>WiFi 5G Head</b>

<b>WiFi 5G Body</b>
<b>BT Head</b>
<b>BT Body</b>

Test Laboratory: HUAWEI SAR/HAC Lab

## ELE-L04 GSM850 190CH Left Cheek-Second Antenna

**DUT: ELE-L04; Type: Smart Phone; Serial: SAR5**

Communication System: UID 0, HW-GSM\GPRS\EGPRS-1TS (0); Frequency: 836.6 MHz; Duty Cycle: 1:8.30042

Medium parameters used:  $f = 837$  MHz;  $\sigma = 0.934$  S/m;  $\epsilon_r = 41.064$ ;  $\rho = 1000$  kg/m<sup>3</sup>

Phantom section: Left Section

DASY Configuration:

- Probe: EX3DV4 - SN7489; ConvF(10.39, 10.39, 10.39) @ 836.6 MHz; Calibrated: 2018-1-9
- Sensor-Surface: 1.4mm (Mechanical Surface Detection),  $z = 1.0, 31.0$
- Electronics: DAE4 Sn1531; Calibrated: 2018-1-3
- Phantom: SAM8; Type: SAM; Serial: 1940
- DASY52 52.10.1(1476); SEMCAD X 14.6.11(7439)

**Configuration/Head/Area Scan (8x13x1):** Measurement grid:  $dx=15$ mm,  $dy=15$ mm

Maximum value of SAR (measured) = 0.351 W/kg

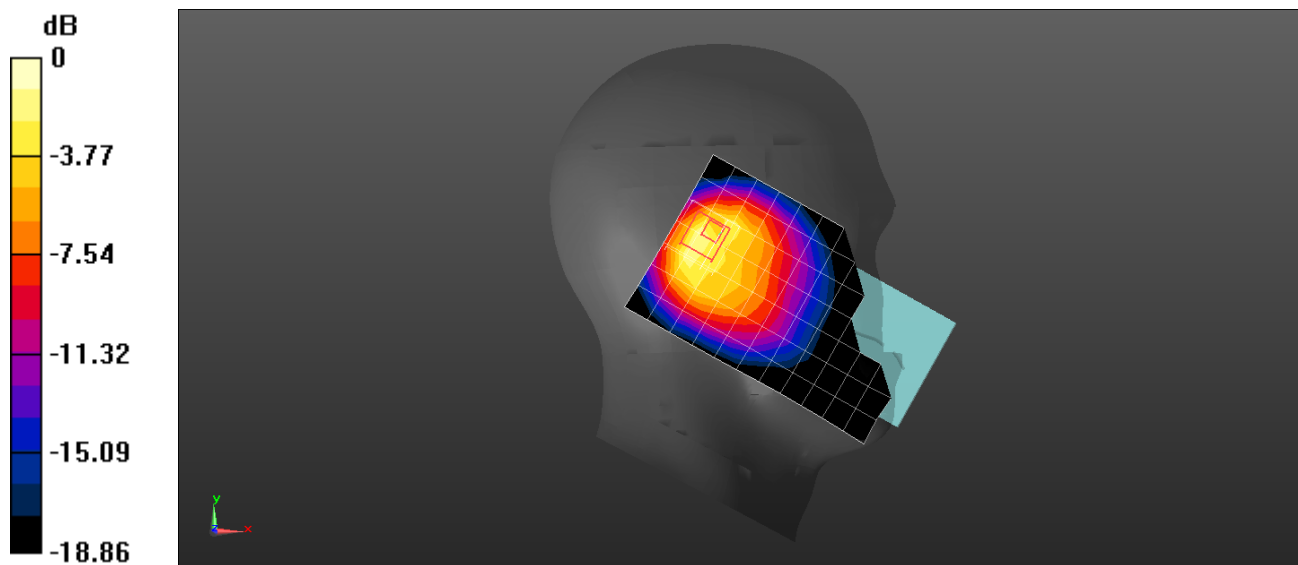
**Configuration/Head/Zoom Scan (5x5x5)/Cube 0:** Measurement grid:  $dx=8$ mm,  $dy=8$ mm,  $dz=5$ mm

Reference Value = 16.39 V/m; Power Drift = -0.14 dB

Peak SAR (extrapolated) = 0.636 W/kg

**SAR(1 g) = 0.273 W/kg; SAR(10 g) = 0.138 W/kg**

Maximum value of SAR (measured) = 0.473 W/kg



0 dB = 0.473 W/kg = -3.25 dBW/kg

Test Laboratory: HUAWEI SAR/HAC Lab

## ELE-L04 GSM850 190CH Right Cheek-Main Antenna

**DUT: ELE-L04; Type: Smart Phone; Serial: SAR5**

Communication System: UID 0, HW-GSM\GPRS\EGPRS-1TS (0); Frequency: 836.6 MHz; Duty Cycle: 1:8.30042

Medium parameters used:  $f = 837$  MHz;  $\sigma = 0.934$  S/m;  $\epsilon_r = 41.064$ ;  $\rho = 1000$  kg/m<sup>3</sup>

Phantom section: Right Section

DASY Configuration:

- Probe: EX3DV4 - SN7489; ConvF(10.39, 10.39, 10.39) @ 836.6 MHz; Calibrated: 2018-1-9
- Sensor-Surface: 1.4mm (Mechanical Surface Detection),  $z = 1.0, 31.0$
- Electronics: DAE4 Sn1531; Calibrated: 2018-1-3
- Phantom: SAM8; Type: SAM; Serial: 1940
- DASY52 52.10.1(1476); SEMCAD X 14.6.11(7439)

**Configuration/Head/Area Scan (8x13x1):** Measurement grid:  $dx=15$ mm,  $dy=15$ mm

Maximum value of SAR (measured) = 0.113 W/kg

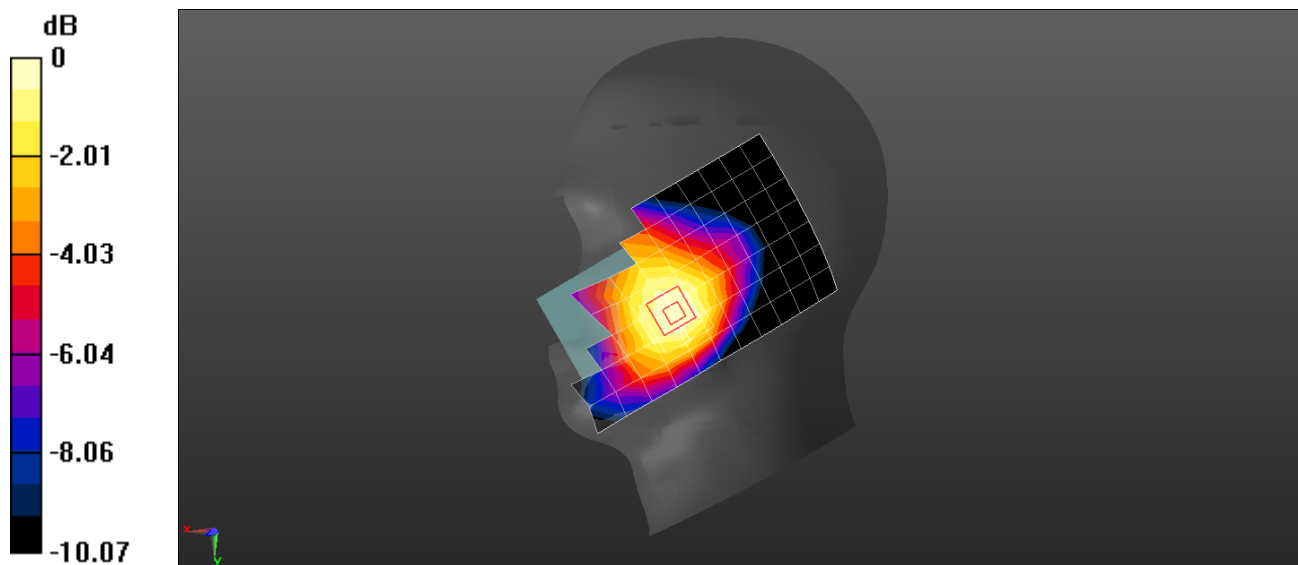
**Configuration/Head/Zoom Scan (5x5x7)/Cube 0:** Measurement grid:  $dx=8$ mm,  $dy=8$ mm,  $dz=5$ mm

Reference Value = 7.251 V/m; Power Drift = 0.15 dB

Peak SAR (extrapolated) = 0.122 W/kg

**SAR(1 g) = 0.104 W/kg; SAR(10 g) = 0.082 W/kg**

Maximum value of SAR (measured) = 0.117 W/kg



0 dB = 0.117 W/kg = -9.32 dBW/kg

Test Laboratory: HUAWEI SAR/HAC Lab

### ELE-L04 GSM850 190CH Back Side 15mm-Second Antenna

**DUT: ELE-L04; Type: Smart Phone; Serial: SAR1**

Communication System: UID 0, HW-GSM\GPRS\EGPRS-1TS (0); Frequency: 836.6 MHz; Duty Cycle: 1:8.30042

Medium parameters used:  $f = 837$  MHz;  $\sigma = 1.013$  S/m;  $\epsilon_r = 52.688$ ;  $\rho = 1000$  kg/m<sup>3</sup>

Phantom section: Flat Section

DASY Configuration:

- Probe: EX3DV4 - SN3744; ConvF(9.12, 9.12, 9.12) @ 836.6 MHz; Calibrated: 2018-7-25
- Sensor-Surface: 1.4mm (Mechanical Surface Detection),  $z = 1.0, 31.0$
- Electronics: DAE3 Sn393; Calibrated: 2018-8-14
- Phantom: SAM2; Type: SAM; Serial: 1474
- DASY52 52.10.1(1476); SEMCAD X 14.6.11(7439)

**Configuration/Body/Area Scan (9x14x1):** Measurement grid:  $dx=15$ mm,  $dy=15$ mm

Maximum value of SAR (measured) = 0.0597 W/kg

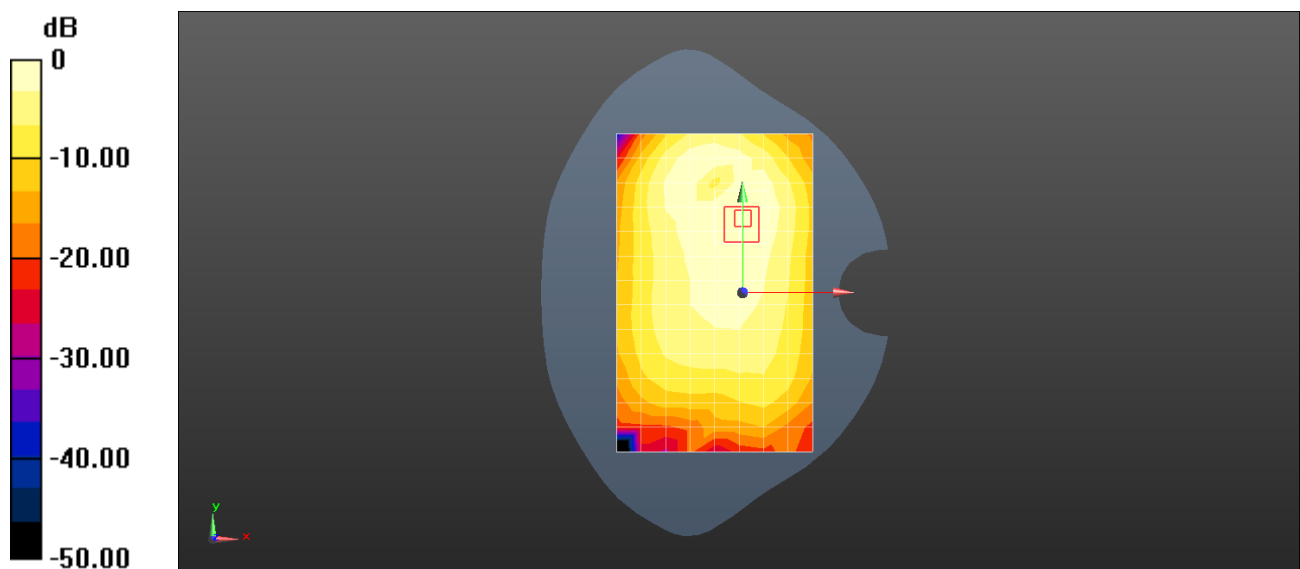
**Configuration/Body/Zoom Scan (5x5x7)/Cube 0:** Measurement grid:  $dx=8$ mm,  $dy=8$ mm,  $dz=5$ mm

Reference Value = 6.165 V/m; Power Drift = -0.10 dB

Peak SAR (extrapolated) = 0.0700 W/kg

**SAR(1 g) = 0.049 W/kg; SAR(10 g) = 0.035 W/kg**

Maximum value of SAR (measured) = 0.0623 W/kg



0 dB = 0.0597 W/kg = -12.24 dBW/kg

Test Laboratory: HUAWEI SAR/HAC Lab

## ELE-L04 GSM850 128CH Back Side 15mm-Main Antenna

**DUT: ELE-L04; Type: Smart Phone; Serial: SAR1**

Communication System: UID 0, HW-GSM\GPRS\EGPRS-1TS (0); Frequency: 824.2 MHz; Duty Cycle: 1:8.30042

Medium parameters used (interpolated):  $f = 824.2$  MHz;  $\sigma = 1.009$  S/m;  $\epsilon_r = 52.749$ ;  $\rho = 1000$  kg/m<sup>3</sup>

Phantom section: Flat Section

DASY Configuration:

- Probe: EX3DV4 - SN3744; ConvF(9.12, 9.12, 9.12) @ 824.2 MHz; Calibrated: 2018-7-25
- Sensor-Surface: 1.4mm (Mechanical Surface Detection),  $z = 1.0, 31.0$
- Electronics: DAE3 Sn393; Calibrated: 2018-8-14
- Phantom: SAM2; Type: SAM; Serial: 1474
- DASY52 52.10.1(1476); SEMCAD X 14.6.11(7439)

**Configuration/Body/Area Scan (9x14x1):** Measurement grid:  $dx=15$ mm,  $dy=15$ mm

[Info: Interpolated medium parameters used for SAR evaluation.](#)

Maximum value of SAR (measured) = 0.375 W/kg

**Configuration/Body/Zoom Scan (5x5x7)/Cube 0:** Measurement grid:  $dx=8$ mm,  $dy=8$ mm,  $dz=5$ mm

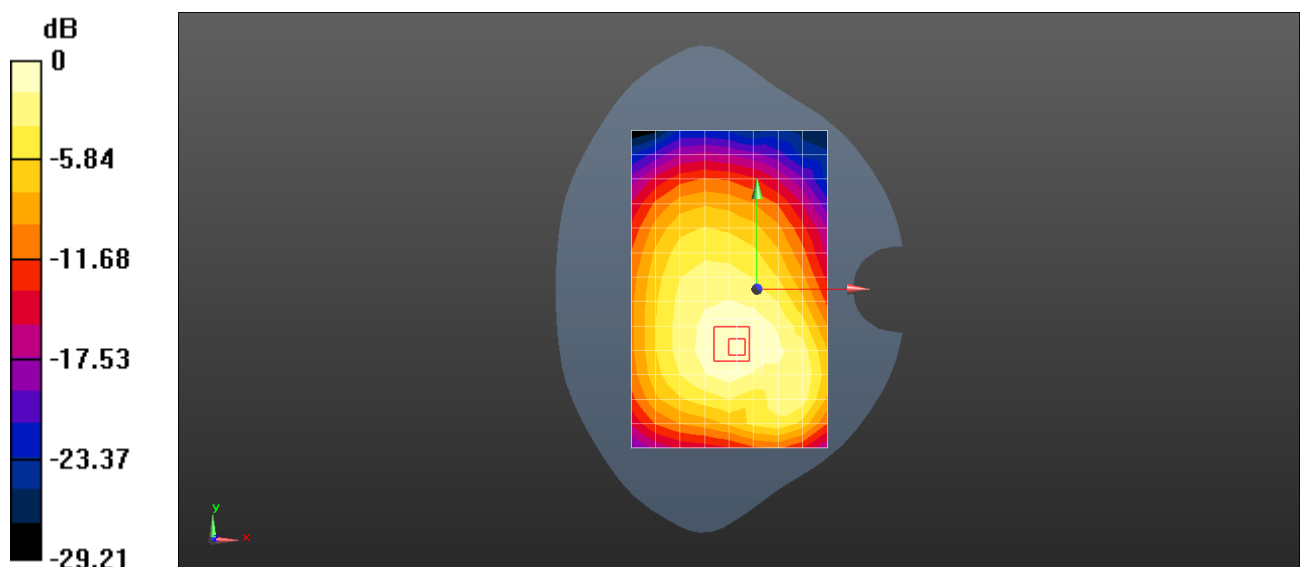
Reference Value = 15.24 V/m; Power Drift = -0.06 dB

Peak SAR (extrapolated) = 0.419 W/kg

**SAR(1 g) = 0.307 W/kg; SAR(10 g) = 0.222 W/kg**

[Info: Interpolated medium parameters used for SAR evaluation.](#)

Maximum value of SAR (measured) = 0.380 W/kg



0 dB = 0.375 W/kg = -4.26 dBW/kg

Test Laboratory: HUAWEI SAR/HAC Lab

## ELE-L04 GSM850 GPRS 2TS 190CH Front Side 10mm-Second Antenna

**DUT: ELE-L04; Type: Smart Phone; Serial: SAR3**

Communication System: UID 0, HW-GSM\GPRS\EGPRS-2TS (0); Frequency: 836.6 MHz; Duty Cycle: 1:4.10015

Medium parameters used:  $f = 837$  MHz;  $\sigma = 0.999$  S/m;  $\epsilon_r = 53.358$ ;  $\rho = 1000$  kg/m<sup>3</sup>

Phantom section: Flat Section

DASY Configuration:

- Probe: EX3DV4 - SN3744; ConvF(9.12, 9.12, 9.12) @ 836.6 MHz; Calibrated: 2018-7-25
- Sensor-Surface: 1.4mm (Mechanical Surface Detection),  $z = 1.0, 31.0$
- Electronics: DAE4 Sn852; Calibrated: 2018-4-23
- Phantom: SAM5; Type: SAM; Serial: 1892
- DASY52 52.10.1(1476); SEMCAD X 14.6.11(7439)

**Configuration/Body/Area Scan (9x13x1):** Measurement grid:  $dx=15$ mm,  $dy=15$ mm

Maximum value of SAR (measured) = 0.160 W/kg

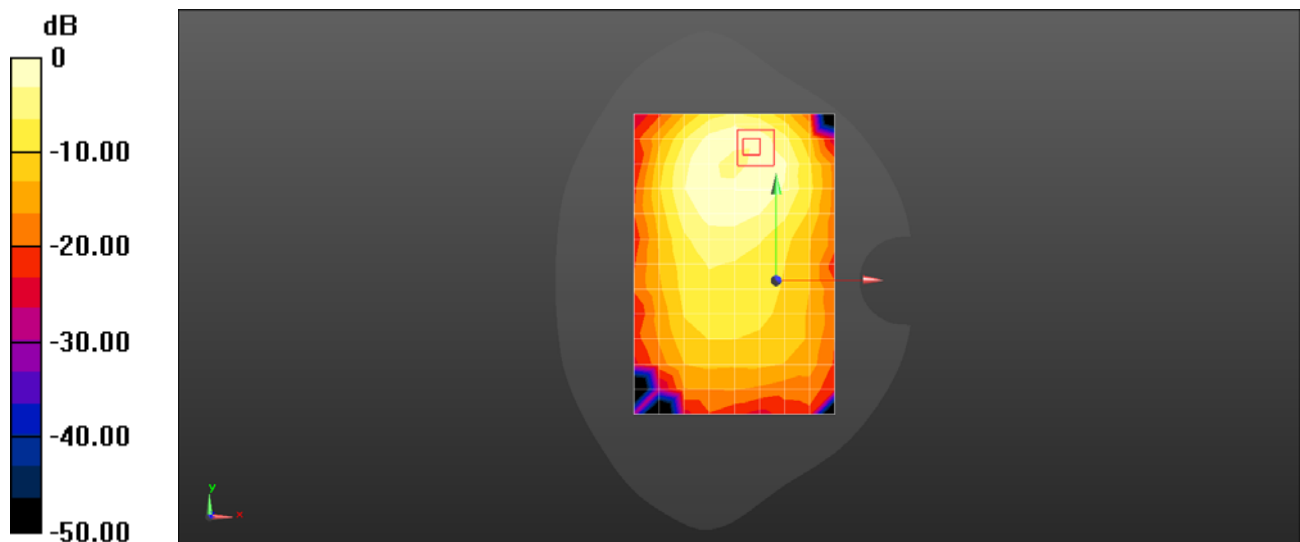
**Configuration/Body/Zoom Scan (5x6x7)/Cube 0:** Measurement grid:  $dx=8$ mm,  $dy=8$ mm,  $dz=5$ mm

Reference Value = 5.647 V/m; Power Drift = -0.17 dB

Peak SAR (extrapolated) = 0.216 W/kg

**SAR(1 g) = 0.114 W/kg; SAR(10 g) = 0.062 W/kg**

Maximum value of SAR (measured) = 0.177 W/kg



0 dB = 0.160 W/kg = -7.95 dBW/kg

Test Laboratory: HUAWEI SAR/HAC Lab

## **ELE-L04 GSM850 GPRS 2TS 128CH Back Side 10mm with Battery2-Main Antenna**

**DUT: ELE-L04; Type: Smart Phone; Serial: SAR1**

Communication System: UID 0, HW-GSM\GPRS\EGPRS-2TS (0); Frequency: 824.2 MHz; Duty Cycle: 1:4.10015

Medium parameters used (interpolated):  $f = 824.2$  MHz;  $\sigma = 1.008$  S/m;  $\epsilon_r = 52.697$ ;  $\rho = 1000$  kg/m<sup>3</sup>

Phantom section: Flat Section

DASY Configuration:

- Probe: EX3DV4 - SN3744; ConvF(9.12, 9.12, 9.12) @ 824.2 MHz; Calibrated: 2018-7-25
- Sensor-Surface: 1.4mm (Mechanical Surface Detection),  $z = 1.0, 31.0$
- Electronics: DAE3 Sn393; Calibrated: 2018-8-14
- Phantom: SAM2; Type: SAM; Serial: 1474
- DASY52 52.10.1(1476); SEMCAD X 14.6.11(7439)

**Configuration/Body/Area Scan (9x14x1):** Measurement grid:  $dx=15$ mm,  $dy=15$ mm

[Info: Interpolated medium parameters used for SAR evaluation.](#)

Maximum value of SAR (measured) = 0.639 W/kg

**Configuration/Body/Zoom Scan (6x6x7)/Cube 1:** Measurement grid:  $dx=8$ mm,  $dy=8$ mm,  $dz=5$ mm

Reference Value = 16.44 V/m; Power Drift = -0.10 dB

Peak SAR (extrapolated) = 0.704 W/kg

**SAR(1 g) = 0.481 W/kg; SAR(10 g) = 0.340 W/kg**

[Info: Interpolated medium parameters used for SAR evaluation.](#)

Maximum value of SAR (measured) = 0.597 W/kg

**Configuration/Body/Zoom Scan (6x6x7)/Cube 0:** Measurement grid:  $dx=8$ mm,  $dy=8$ mm,  $dz=5$ mm

Reference Value = 16.44 V/m; Power Drift = -0.10 dB

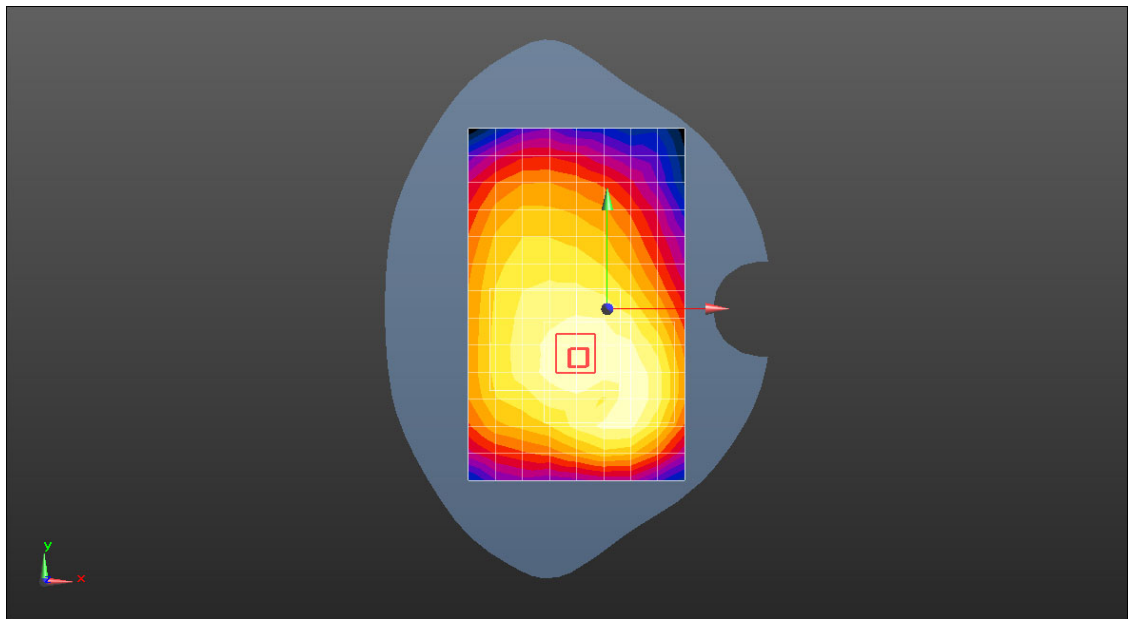
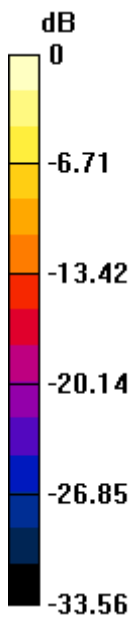
Peak SAR (extrapolated) = 0.786 W/kg

**SAR(1 g) = 0.444 W/kg; SAR(10 g) = 0.262 W/kg**

[Info: Interpolated medium parameters used for SAR evaluation.](#)

Maximum value of SAR (measured) = 0.654 W/kg





0 dB = 0.562 W/kg = -2.50 dBW/kg

Test Laboratory: HUAWEI SAR/HAC Lab

## ELE-L04 GSM1900 512CH Right Tilt with Battery2-Second Antenna

**DUT: ELE-L04; Type: Smart Phone; Serial: SAR2**

Communication System: UID 0, HW-GSM\GPRS\EGPRS-1TS (0); Frequency: 1850.2 MHz; Duty Cycle: 1:8.30042

Medium parameters used (interpolated):  $f = 1850.2$  MHz;  $\sigma = 1.376$  S/m;  $\epsilon_r = 41.805$ ;  $\rho = 1000$  kg/m<sup>3</sup>

Phantom section: Right Section

DASY Configuration:

- Probe: ES3DV3 - SN3168; ConvF(5.2, 5.2, 5.2) @ 1850.2 MHz; Calibrated: 2018-9-27
- Sensor-Surface: 3mm (Mechanical Surface Detection),  $z = 2.0, 32.0$
- Electronics: DAE4 Sn1235; Calibrated: 2018-11-14
- Phantom: SAM3; Type: SAM; Serial: 1597
- DASY52 52.10.1(1476); SEMCAD X 14.6.11(7439)

**Configuration/Head/Area Scan (9x14x1):** Measurement grid:  $dx=15$ mm,  $dy=15$ mm

[Info: Interpolated medium parameters used for SAR evaluation.](#)

Maximum value of SAR (measured) = 0.450 W/kg

**Configuration/Head/Zoom Scan (6x5x7)/Cube 0:** Measurement grid:  $dx=8$ mm,  $dy=8$ mm,  $dz=5$ mm

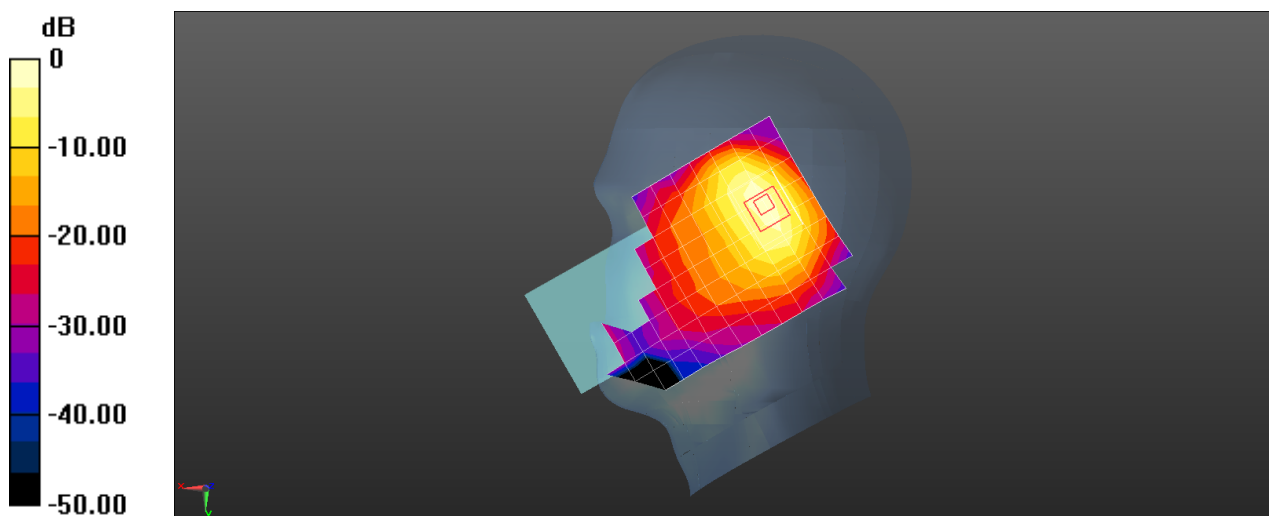
Reference Value = 14.02 V/m; Power Drift = -0.12 dB

Peak SAR (extrapolated) = 0.693 W/kg

**SAR(1 g) = 0.333 W/kg; SAR(10 g) = 0.162 W/kg**

[Info: Interpolated medium parameters used for SAR evaluation.](#)

Maximum value of SAR (measured) = 0.439 W/kg



0 dB = 0.450 W/kg = -3.46 dBW/kg

Test Laboratory: HUAWEI SAR/HAC Lab

## ELE-L04 GSM1900 810CH Left Cheek with Battery2-Main Antenna

**DUT: ELE-L04; Type: Smart Phone; Serial: SAR2**

Communication System: UID 0, HW-GSM\GPRS\EGPRS-1TS (0); Frequency: 1909.8 MHz; Duty Cycle: 1:8.30042

Medium parameters used:  $f = 1910$  MHz;  $\sigma = 1.435$  S/m;  $\epsilon_r = 41.552$ ;  $\rho = 1000$  kg/m<sup>3</sup>

Phantom section: Left Section

DASY Configuration:

- Probe: ES3DV3 - SN3168; ConvF(5.2, 5.2, 5.2) @ 1909.8 MHz; Calibrated: 2018-9-27
- Sensor-Surface: 3mm (Mechanical Surface Detection),  $z = 2.0, 32.0$
- Electronics: DAE4 Sn1235; Calibrated: 2018-11-14
- Phantom: SAM3; Type: SAM; Serial: 1597
- DASY52 52.10.1(1476); SEMCAD X 14.6.11(7439)

**Configuration/Head/Area Scan (9x14x1):** Measurement grid:  $dx=15$ mm,  $dy=15$ mm

Maximum value of SAR (measured) = 0.163 W/kg

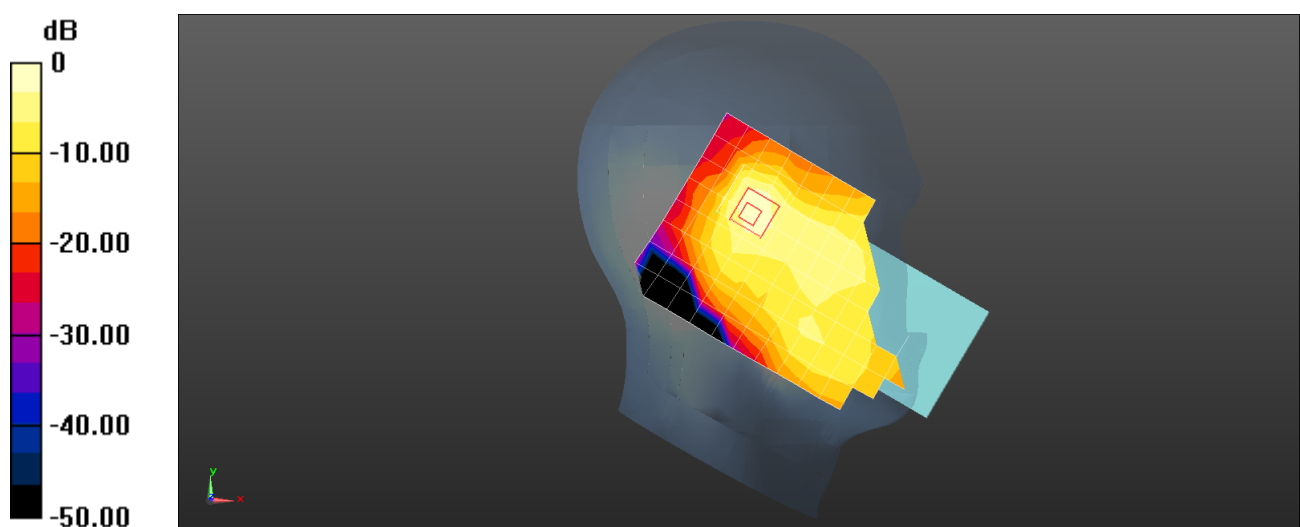
**Configuration/Head/Zoom Scan (5x5x7)/Cube 0:** Measurement grid:  $dx=8$ mm,  $dy=8$ mm,  $dz=5$ mm

Reference Value = 5.955 V/m; Power Drift = -0.17 dB

Peak SAR (extrapolated) = 0.262 W/kg

**SAR(1 g) = 0.131 W/kg; SAR(10 g) = 0.059 W/kg**

Maximum value of SAR (measured) = 0.181 W/kg



0 dB = 0.163 W/kg = -7.87 dBW/kg

Test Laboratory: HUAWEI SAR/HAC Lab

## ELE-L04 GSM1900 512CH Back Side 15mm-Second Antenna

**DUT: ELE-L04; Type: Smart Phone; Serial: SAR2**

Communication System: UID 0, HW-GSM\GPRS\EGPRS-1TS (0); Frequency: 1850.2 MHz; Duty Cycle: 1:8.30042

Medium parameters used (interpolated):  $f = 1850.2$  MHz;  $\sigma = 1.45$  S/m;  $\epsilon_r = 50.976$ ;  $\rho = 1000$  kg/m<sup>3</sup>

Phantom section: Flat Section

DASY Configuration:

- Probe: EX3DV4 - SN3820; ConvF(7.36, 7.36, 7.36) @ 1850.2 MHz; Calibrated: 2018-6-26
- Sensor-Surface: 1.4mm (Mechanical Surface Detection),  $z = 1.0, 31.0$
- Electronics: DAE4 Sn913; Calibrated: 2018-5-11
- Phantom: SAM4; Type: SAM; Serial: 1620
- DASY52 52.10.1(1476); SEMCAD X 14.6.11(7439)

**Configuration/Body/Area Scan (8x14x1):** Measurement grid:  $dx=15$ mm,  $dy=15$ mm

[Info: Interpolated medium parameters used for SAR evaluation.](#)

Maximum value of SAR (measured) = 0.0375 W/kg

**Configuration/Body/Zoom Scan (7x6x7)/Cube 0:** Measurement grid:  $dx=8$ mm,  $dy=8$ mm,  $dz=5$ mm

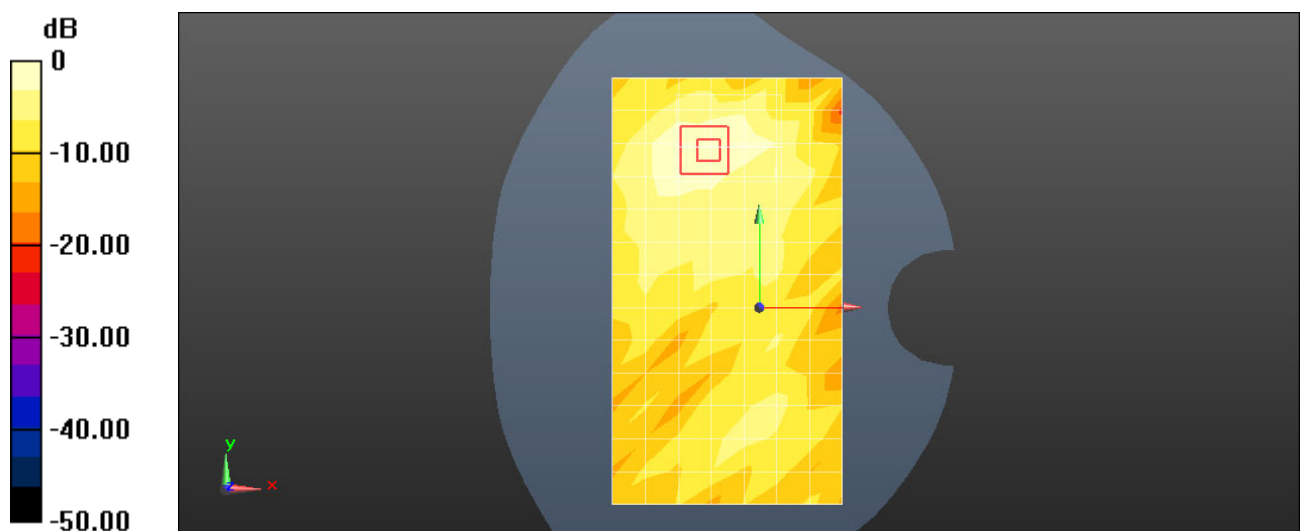
Reference Value = 1.726 V/m; Power Drift = 0.02 dB

Peak SAR (extrapolated) = 0.0410 W/kg

**SAR(1 g) = 0.025 W/kg; SAR(10 g) = 0.015 W/kg**

[Info: Interpolated medium parameters used for SAR evaluation.](#)

Maximum value of SAR (measured) = 0.0359 W/kg



0 dB = 0.0359 W/kg = -14.45 dBW/kg

Test Laboratory: HUAWEI SAR/HAC Lab

## ELE-L04 GSM1900 810CH Back Side 15mm-Main Antenna

**DUT: ELE-L04; Type: Smart Phone; Serial: SAR2**

Communication System: UID 0, HW-GSM\GPRS\EGPRS-1TS (0); Frequency: 1909.8 MHz; Duty Cycle: 1:8.30042

Medium parameters used:  $f = 1910$  MHz;  $\sigma = 1.486$  S/m;  $\epsilon_r = 50.895$ ;  $\rho = 1000$  kg/m<sup>3</sup>

Phantom section: Flat Section

DASY Configuration:

- Probe: EX3DV4 - SN3820; ConvF(7.36, 7.36, 7.36) @ 1909.8 MHz; Calibrated: 2018-6-26
- Sensor-Surface: 1.4mm (Mechanical Surface Detection),  $z = 1.0, 31.0$
- Electronics: DAE4 Sn913; Calibrated: 2018-5-11
- Phantom: SAM4; Type: SAM; Serial: 1620
- DASY52 52.10.1(1476); SEMCAD X 14.6.11(7439)

**Configuration/Body/Area Scan (8x14x1):** Measurement grid:  $dx=15$ mm,  $dy=15$ mm

Maximum value of SAR (measured) = 0.170 W/kg

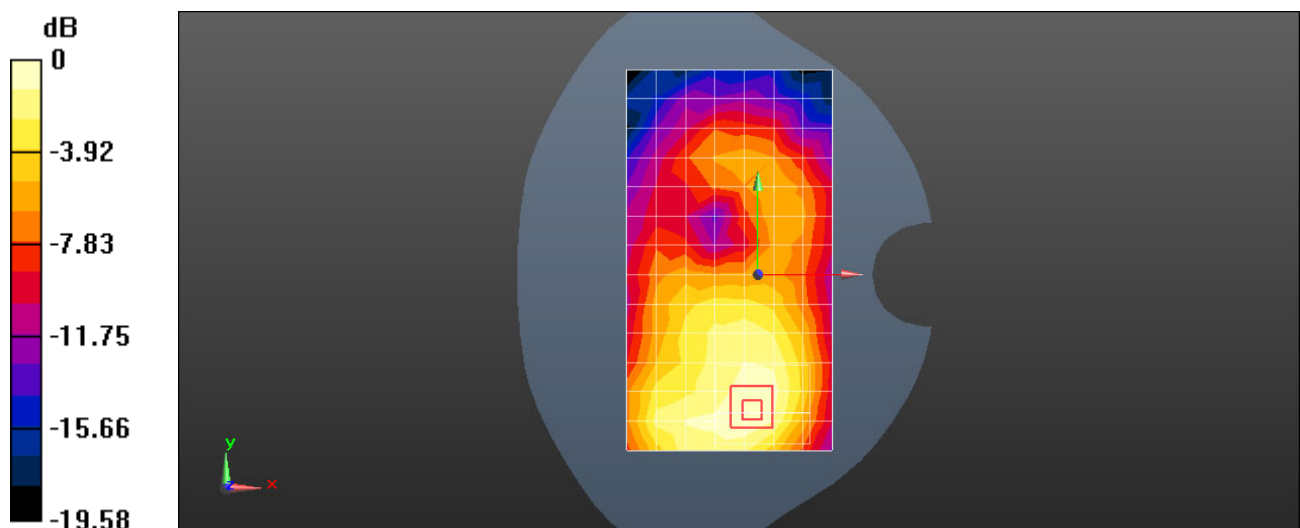
**Configuration/Body/Zoom Scan (7x6x7)/Cube 0:** Measurement grid:  $dx=8$ mm,  $dy=8$ mm,  $dz=5$ mm

Reference Value = 5.317 V/m; Power Drift = -0.11 dB

Peak SAR (extrapolated) = 0.199 W/kg

**SAR(1 g) = 0.130 W/kg; SAR(10 g) = 0.084 W/kg**

Maximum value of SAR (measured) = 0.175 W/kg



0 dB = 0.175 W/kg = -7.57 dBW/kg

Test Laboratory: HUAWEI SAR/HAC Lab

## ELE-L04 GSM1900 GPRS 2TS 661CH Top Side 10mm with Battery2-Second Antenna

**DUT: ELE-L04; Type: Smart Phone; Serial: SAR3**

Communication System: UID 0, HW-GSM\GPRS\EGPRS-2TS (0); Frequency: 1880 MHz;Duty Cycle: 1:4.10015

Medium parameters used:  $f = 1880$  MHz;  $\sigma = 1.569$  S/m;  $\epsilon_r = 55.118$ ;  $\rho = 1000$  kg/m<sup>3</sup>

Phantom section: Flat Section

DASY Configuration:

- Probe: EX3DV4 - SN3744; ConvF(7.6, 7.6, 7.6) @ 1880 MHz; Calibrated: 2018-7-25
- Sensor-Surface: 1.4mm (Mechanical Surface Detection),  $z = 1.0, 31.0$
- Electronics: DAE4 Sn852; Calibrated: 2018-4-23
- Phantom: SAM5; Type: SAM; Serial: 1892
- DASY52 52.10.1(1476); SEMCAD X 14.6.11(7439)

**Configuration/Body/Area Scan (5x9x1):** Measurement grid:  $dx=15$ mm,  $dy=15$ mm  
Maximum value of SAR (measured) = 0.183 W/kg

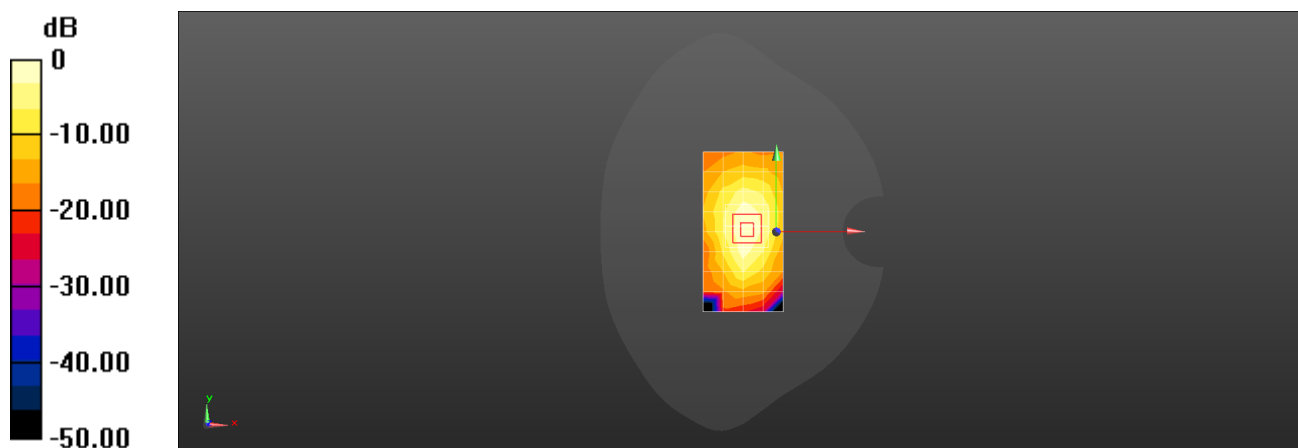
**Configuration/Body/Zoom Scan (5x5x7)/Cube 0:** Measurement grid:  $dx=8$ mm,  $dy=8$ mm,  $dz=5$ mm

Reference Value = 11.12 V/m; Power Drift = -0.03 dB

Peak SAR (extrapolated) = 0.223 W/kg

**SAR(1 g) = 0.126 W/kg; SAR(10 g) = 0.068 W/kg**

Maximum value of SAR (measured) = 0.187 W/kg



0 dB = 0.187 W/kg = -7.28 dBW/kg

Test Laboratory: HUAWEI SAR/HAC Lab

## ELE-L04 GSM1900 GPRS 2TS 810CH Bottom Side 10mm-Main Antenna

**DUT: ELE-L04; Type: Smart Phone; Serial: SAR2**

Communication System: UID 0, HW-GSM\GPRS\EGPRS-2TS (0); Frequency: 1909.8 MHz; Duty Cycle: 1:4.10015

Medium parameters used:  $f = 1910$  MHz;  $\sigma = 1.486$  S/m;  $\epsilon_r = 50.895$ ;  $\rho = 1000$  kg/m<sup>3</sup>

Phantom section: Flat Section

DASY Configuration:

- Probe: EX3DV4 - SN3820; ConvF(7.36, 7.36, 7.36) @ 1909.8 MHz; Calibrated: 2018-6-26
- Sensor-Surface: 1.4mm (Mechanical Surface Detection),  $z = 1.0, 31.0$
- Electronics: DAE4 Sn913; Calibrated: 2018-5-11
- Phantom: SAM4; Type: SAM; Serial: 1620
- DASY52 52.10.1(1476); SEMCAD X 14.6.11(7439)

**Configuration/Body/Area Scan (5x7x1):** Measurement grid:  $dx=15$ mm,  $dy=15$ mm

Maximum value of SAR (measured) = 0.554 W/kg

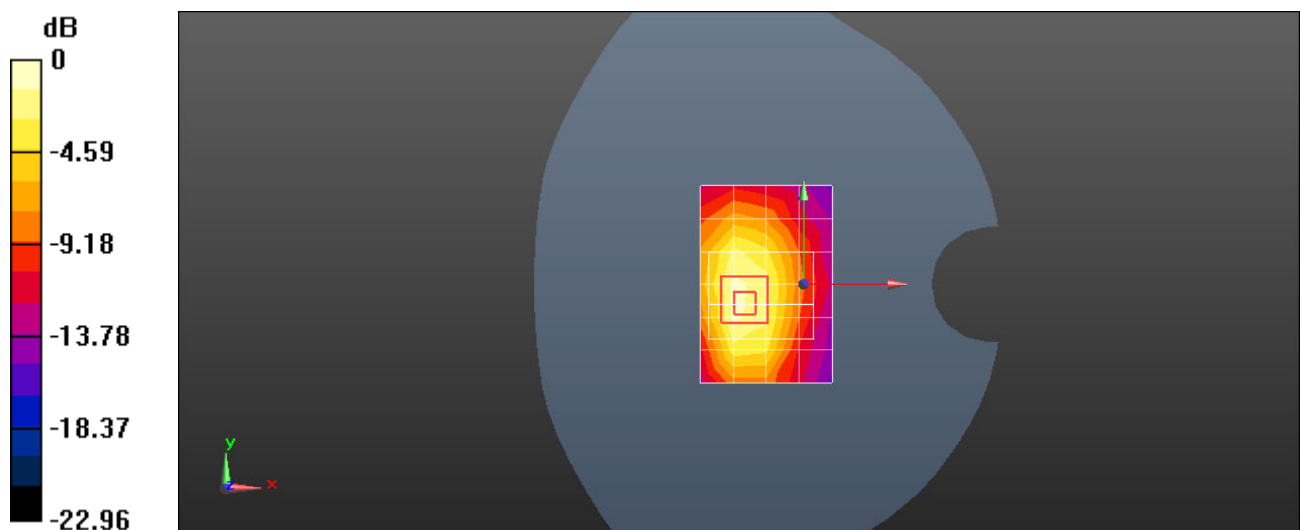
**Configuration/Body/Zoom Scan (7x6x7)/Cube 0:** Measurement grid:  $dx=8$ mm,  $dy=8$ mm,  $dz=5$ mm

Reference Value = 16.88 V/m; Power Drift = 0.18 dB

Peak SAR (extrapolated) = 0.804 W/kg

**SAR(1 g) = 0.473 W/kg; SAR(10 g) = 0.265 W/kg**

Maximum value of SAR (measured) = 0.690 W/kg



0 dB = 0.690 W/kg = -1.61 dBW/kg

Test Laboratory: HUAWEI SAR/HAC Lab

## ELE-L04 UMTS Band II 9400CH Right Cheek with Battery2-Second Antenna

**DUT: ELE-L04; Type: Smart Phone; Serial: SAR2**

Communication System: UID 0, HW-UMTS-FDD(WCDMA) (0); Frequency: 1880 MHz; Duty Cycle: 1:1

Medium parameters used:  $f = 1880$  MHz;  $\sigma = 1.406$  S/m;  $\epsilon_r = 41.539$ ;  $\rho = 1000$  kg/m<sup>3</sup>

Phantom section: Right Section

DASY Configuration:

- Probe: ES3DV3 - SN3168; ConvF(5.2, 5.2, 5.2) @ 1880 MHz; Calibrated: 2018-9-27
- Sensor-Surface: 3mm (Mechanical Surface Detection),  $z = 2.0, 32.0$
- Electronics: DAE4 Sn1235; Calibrated: 2018-11-14
- Phantom: SAM3; Type: SAM; Serial: 1597
- DASY52 52.10.1(1476); SEMCAD X 14.6.11(7439)

**Configuration/Head/Area Scan (9x14x1):** Measurement grid:  $dx=15$ mm,  $dy=15$ mm

Maximum value of SAR (measured) = 0.340 W/kg

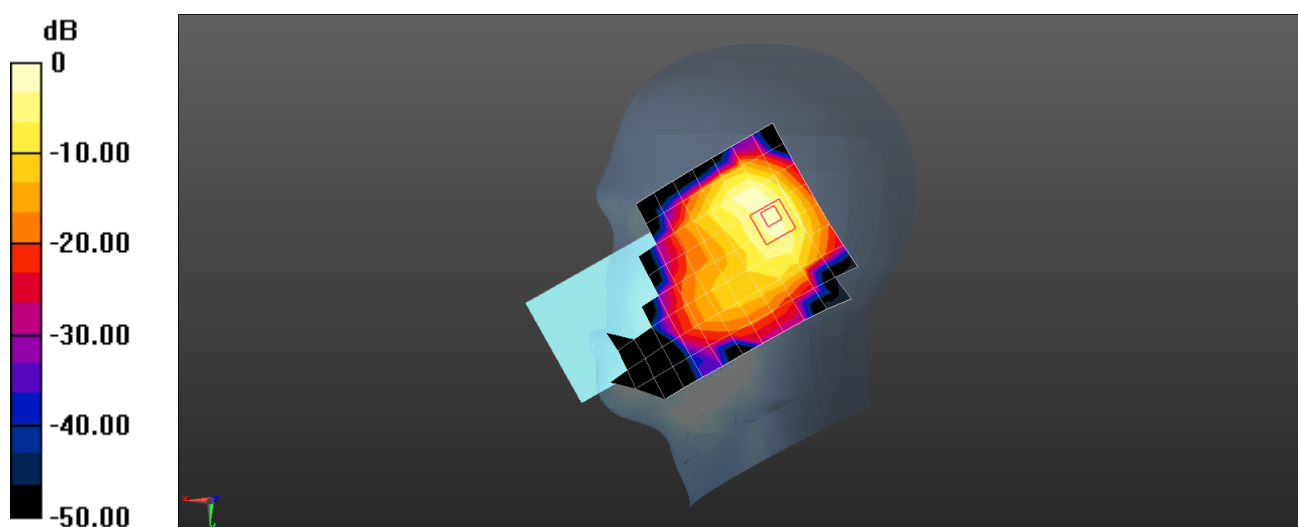
**Configuration/Head/Zoom Scan (6x5x7)/Cube 0:** Measurement grid:  $dx=8$ mm,  $dy=8$ mm,  $dz=5$ mm

Reference Value = 11.75 V/m; Power Drift = 0.02 dB

Peak SAR (extrapolated) = 0.564 W/kg

**SAR(1 g) = 0.266 W/kg; SAR(10 g) = 0.124 W/kg**

Maximum value of SAR (measured) = 0.343 W/kg





Test Laboratory: HUAWEI SAR/HAC Lab

## ELE-L04 UMTS Band II 9400CH Left Cheek-Main Antenna

**DUT: ELE-L04; Type: Smart Phone; Serial: SAR2**

Communication System: UID 0, HW-UMTS-FDD(WCDMA) (0); Frequency: 1880 MHz; Duty Cycle: 1:1

Medium parameters used:  $f = 1880$  MHz;  $\sigma = 1.399$  S/m;  $\epsilon_r = 39.402$ ;  $\rho = 1000$  kg/m<sup>3</sup>

Phantom section: Left Section

DASY Configuration:

- Probe: EX3DV4 - SN3820; ConvF(7.57, 7.57, 7.57) @ 1880 MHz; Calibrated: 2018-6-26
- Sensor-Surface: 1.4mm (Mechanical Surface Detection),  $z = 1.0, 31.0$
- Electronics: DAE4 Sn913; Calibrated: 2018-5-11
- Phantom: SAM3; Type: SAM; Serial: 1597
- DASY52 52.10.1(1476); SEMCAD X 14.6.11(7439)

**Configuration/Head/Area Scan (8x13x1):** Measurement grid:  $dx=15$ mm,  $dy=15$ mm

Maximum value of SAR (measured) = 0.209 W/kg

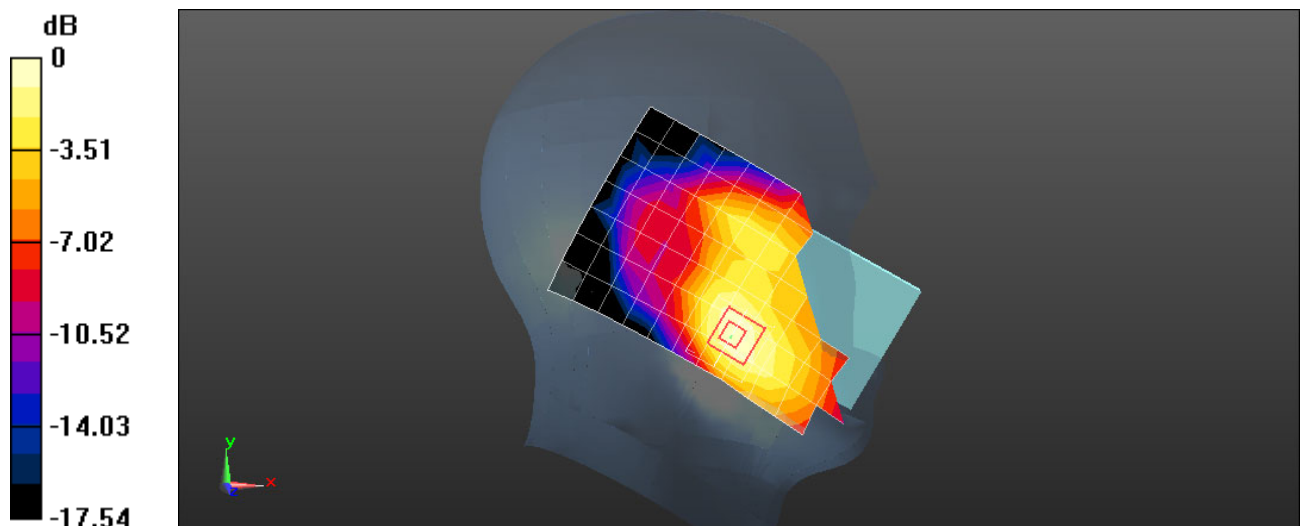
**Configuration/Head/Zoom Scan (5x5x7)/Cube 0:** Measurement grid:  $dx=8$ mm,  $dy=8$ mm,  $dz=5$ mm

Reference Value = 5.037 V/m; Power Drift = 0.05 dB

Peak SAR (extrapolated) = 0.262 W/kg

**SAR(1 g) = 0.173 W/kg; SAR(10 g) = 0.112 W/kg**

Maximum value of SAR (measured) = 0.231 W/kg



0 dB = 0.231 W/kg = -6.36 dBW/kg

Test Laboratory: HUAWEI SAR/HAC Lab

## ELE-L04 UMTS Band II 9262CH Back Side 15mm-Second Antenna

**DUT: ELE-L04; Type: Smart Phone; Serial: SAR2**

Communication System: UID 0, HW-UMTS-FDD(WCDMA) (0); Frequency: 1852.4 MHz; Duty Cycle: 1:1

Medium parameters used (interpolated):  $f = 1852.4$  MHz;  $\sigma = 1.461$  S/m;  $\epsilon_r = 52.653$ ;  $\rho = 1000$  kg/m<sup>3</sup>

Phantom section: Flat Section

DASY Configuration:

- Probe: EX3DV4 - SN3820; ConvF(7.36, 7.36, 7.36) @ 1852.4 MHz; Calibrated: 2018-6-26
- Sensor-Surface: 1.4mm (Mechanical Surface Detection),  $z = 1.0, 31.0$
- Electronics: DAE4 Sn913; Calibrated: 2018-5-11
- Phantom: SAM4; Type: SAM; Serial: 1620
- DASY52 52.10.1(1476); SEMCAD X 14.6.11(7439)

**Configuration/Body/Area Scan (8x13x1):** Measurement grid:  $dx=15$ mm,  $dy=15$ mm

[Info: Interpolated medium parameters used for SAR evaluation.](#)

Maximum value of SAR (measured) = 0.194 W/kg

**Configuration/Body/Zoom Scan (5x5x7)/Cube 0:** Measurement grid:  $dx=8$ mm,  $dy=8$ mm,  $dz=5$ mm

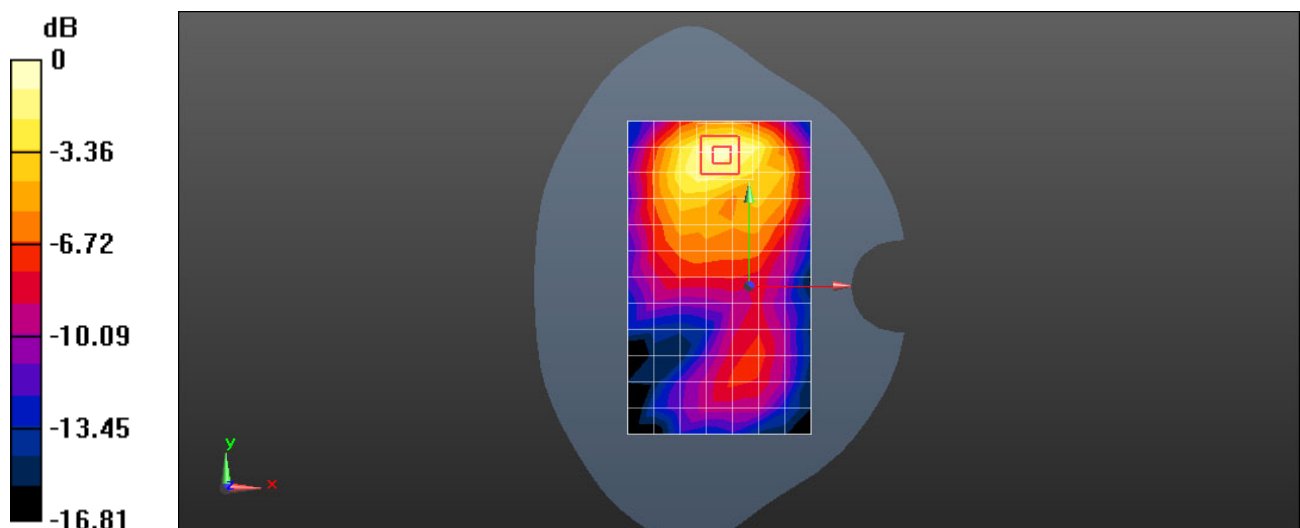
Reference Value = 4.527 V/m; Power Drift = -0.06 dB

Peak SAR (extrapolated) = 0.255 W/kg

**SAR(1 g) = 0.160 W/kg; SAR(10 g) = 0.095 W/kg**

[Info: Interpolated medium parameters used for SAR evaluation.](#)

Maximum value of SAR (measured) = 0.218 W/kg



0 dB = 0.218 W/kg = -6.62 dBW/kg

Test Laboratory: HUAWEI SAR/HAC Lab

## ELE-L04 UMTS Band II 9400CH Back Side 15mm-Main Antenna

**DUT: ELE-L04; Type: Smart Phone; Serial: SAR2**

Communication System: UID 0, HW-UMTS-FDD(WCDMA) (0); Frequency: 1880 MHz; Duty Cycle: 1:1

Medium parameters used:  $f = 1880$  MHz;  $\sigma = 1.481$  S/m;  $\epsilon_r = 52.637$ ;  $\rho = 1000$  kg/m<sup>3</sup>

Phantom section: Flat Section

DASY Configuration:

- Probe: EX3DV4 - SN3820; ConvF(7.36, 7.36, 7.36) @ 1880 MHz; Calibrated: 2018-6-26
- Sensor-Surface: 1.4mm (Mechanical Surface Detection),  $z = 1.0, 31.0$
- Electronics: DAE4 Sn913; Calibrated: 2018-5-11
- Phantom: SAM4; Type: SAM; Serial: 1620
- DASY52 52.10.1(1476); SEMCAD X 14.6.11(7439)

**Configuration/Body/Area Scan (8x13x1):** Measurement grid:  $dx=15$ mm,  $dy=15$ mm

Maximum value of SAR (measured) = 0.432 W/kg

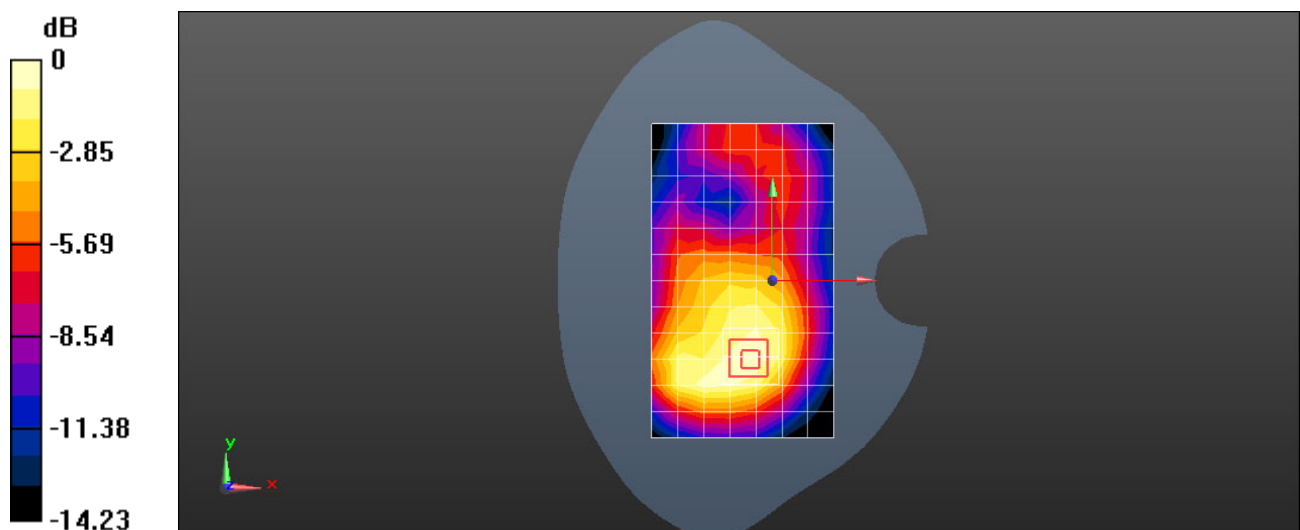
**Configuration/Body/Zoom Scan (5x5x7)/Cube 0:** Measurement grid:  $dx=8$ mm,  $dy=8$ mm,  $dz=5$ mm

Reference Value = 12.60 V/m; Power Drift = -0.11 dB

Peak SAR (extrapolated) = 0.501 W/kg

**SAR(1 g) = 0.326 W/kg; SAR(10 g) = 0.210 W/kg**

Maximum value of SAR (measured) = 0.435 W/kg



0 dB = 0.435 W/kg = -3.61 dBW/kg

Test Laboratory: HUAWEI SAR/HAC Lab

## ELE-L04 UMTS Band II 9262CH Top Side 10mm-Second Antenna

**DUT: ELE-L04; Type: Smart Phone; Serial: SAR2**

Communication System: UID 0, HW-UMTS-FDD(WCDMA) (0); Frequency: 1852.4 MHz; Duty Cycle: 1:1

Medium parameters used (interpolated):  $f = 1852.4$  MHz;  $\sigma = 1.461$  S/m;  $\epsilon_r = 52.653$ ;  $\rho = 1000$  kg/m<sup>3</sup>

Phantom section: Flat Section

DASY Configuration:

- Probe: EX3DV4 - SN3820; ConvF(7.36, 7.36, 7.36) @ 1852.4 MHz; Calibrated: 2018-6-26
- Sensor-Surface: 1.4mm (Mechanical Surface Detection),  $z = 1.0, 31.0$
- Electronics: DAE4 Sn913; Calibrated: 2018-5-11
- Phantom: SAM4; Type: SAM; Serial: 1620
- DASY52 52.10.1(1476); SEMCAD X 14.6.11(7439)

**Configuration/Body/Area Scan (5x9x1):** Measurement grid:  $dx=15$ mm,  $dy=15$ mm

[Info: Interpolated medium parameters used for SAR evaluation.](#)

Maximum value of SAR (measured) = 0.176 W/kg

**Configuration/Body/Zoom Scan (5x5x7)/Cube 0:** Measurement grid:  $dx=8$ mm,  $dy=8$ mm,  $dz=5$ mm

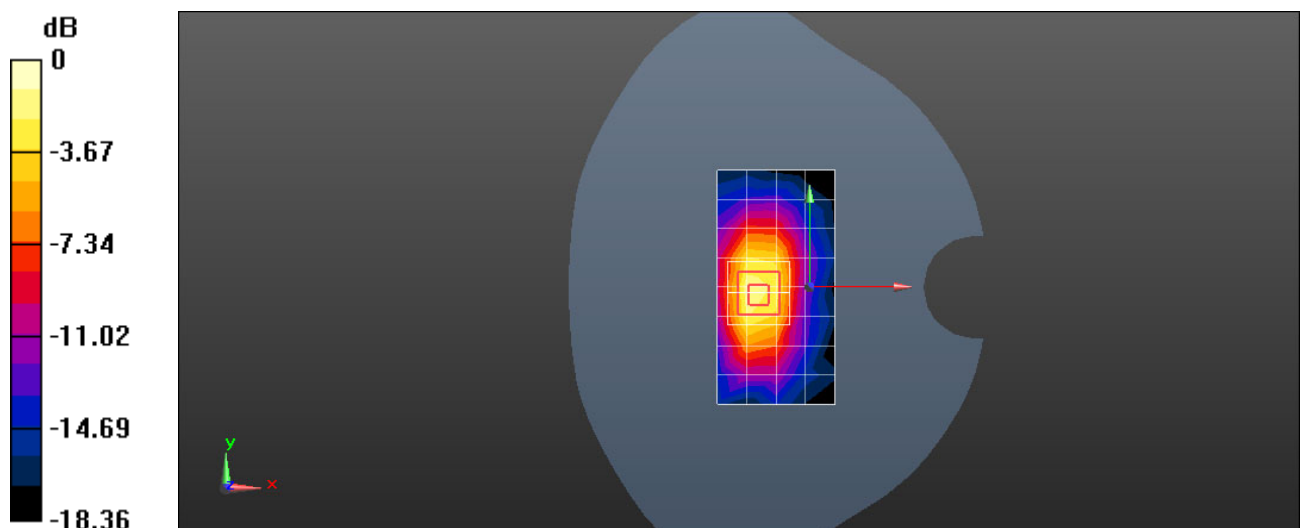
Reference Value = 10.03 V/m; Power Drift = 0.17 dB

Peak SAR (extrapolated) = 0.294 W/kg

**SAR(1 g) = 0.172 W/kg; SAR(10 g) = 0.092 W/kg**

[Info: Interpolated medium parameters used for SAR evaluation.](#)

Maximum value of SAR (measured) = 0.253 W/kg



0 dB = 0.253 W/kg = -5.97 dBW/kg

Test Laboratory: HUAWEI SAR/HAC Lab

## ELE-L04 UMTS Band II 9400CH Back Side 10mm-Main Antenna

**DUT: ELE-L04; Type: Smart Phone; Serial: SAR2**

Communication System: UID 0, HW-UMTS-FDD(WCDMA) (0); Frequency: 1880 MHz; Duty Cycle: 1:1

Medium parameters used:  $f = 1880$  MHz;  $\sigma = 1.527$  S/m;  $\epsilon_r = 52.334$ ;  $\rho = 1000$  kg/m<sup>3</sup>

Phantom section: Flat Section

DASY Configuration:

- Probe: EX3DV4 - SN3820; ConvF(7.36, 7.36, 7.36) @ 1880 MHz; Calibrated: 2018-6-26
- Sensor-Surface: 1.4mm (Mechanical Surface Detection),  $z = 1.0, 31.0$
- Electronics: DAE4 Sn913; Calibrated: 2018-5-11
- Phantom: SAM4; Type: SAM; Serial: 1620
- DASY52 52.10.1(1476); SEMCAD X 14.6.11(7439)

**Configuration/Body/Area Scan (8x14x1):** Measurement grid:  $dx=15$ mm,  $dy=15$ mm

Maximum value of SAR (measured) = 0.416 W/kg

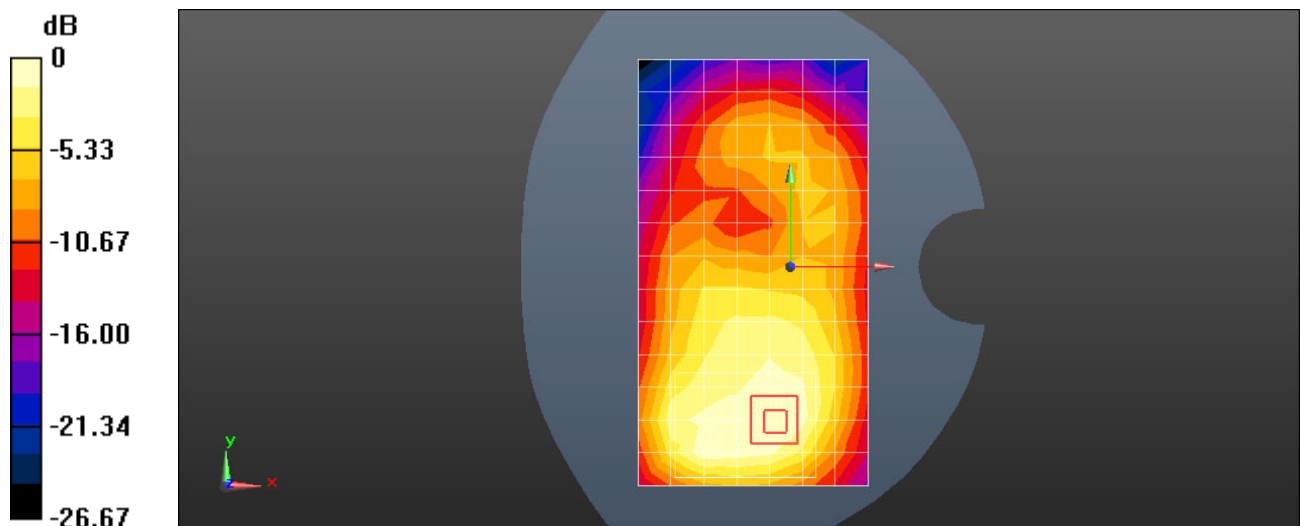
**Configuration/Body/Zoom Scan (9x7x7)/Cube 0:** Measurement grid:  $dx=8$ mm,  $dy=8$ mm,  $dz=5$ mm

Reference Value = 7.147 V/m; Power Drift = -0.11 dB

Peak SAR (extrapolated) = 0.510 W/kg

**SAR(1 g) = 0.318 W/kg; SAR(10 g) = 0.204 W/kg**

Maximum value of SAR (measured) = 0.448 W/kg



0 dB = 0.416 W/kg = -3.81 dBW/kg

Test Laboratory: HUAWEI SAR/HAC Lab

## ELE-L04 UMTS Band IV 1513CH Right Tilt-Second Antenna

**DUT: ELE-L04; Type: Smart Phone; Serial: SAR4**

Communication System: UID 0, HW-UMTS-FDD(WCDMA) (0); Frequency: 1752.6 MHz; Duty Cycle: 1:1

Medium parameters used:  $f = 1753$  MHz;  $\sigma = 1.389$  S/m;  $\epsilon_r = 38.788$ ;  $\rho = 1000$  kg/m<sup>3</sup>

Phantom section: Right Section

DASY Configuration:

- Probe: EX3DV4 - SN7381; ConvF(8.79, 8.79, 8.79) @ 1752.6 MHz; Calibrated: 2018-9-28
- Sensor-Surface: 1.4mm (Mechanical Surface Detection),  $z = 1.0, 31.0$
- Electronics: DAE4 Sn1236; Calibrated: 2018-7-18
- Phantom: SAM7; Type: SAM; Serial: 1594
- DASY52 52.10.1(1476); SEMCAD X 14.6.11(7439)

**Configuration/Head/Area Scan (8x13x1):** Measurement grid:  $dx=15$ mm,  $dy=15$ mm

Maximum value of SAR (measured) = 0.416 W/kg

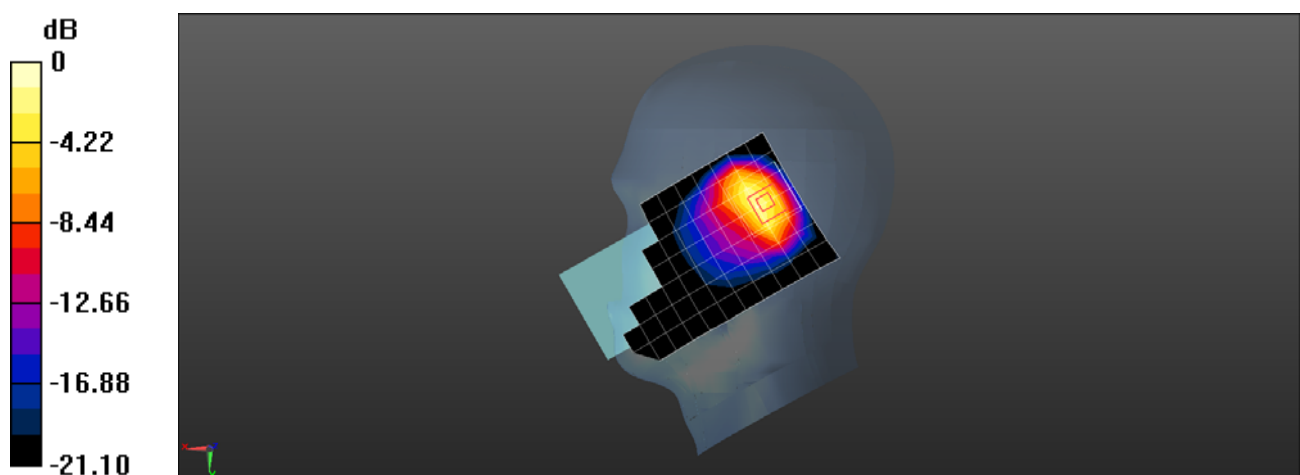
**Configuration/Head/Zoom Scan (6x6x5)/Cube 0:** Measurement grid:  $dx=8$ mm,  $dy=8$ mm,  $dz=5$ mm

Reference Value = 17.65 V/m; Power Drift = -0.16 dB

Peak SAR (extrapolated) = 0.791 W/kg

**SAR(1 g) = 0.361 W/kg; SAR(10 g) = 0.170 W/kg**

Maximum value of SAR (measured) = 0.544 W/kg



0 dB = 0.544 W/kg = -2.64 dBW/kg

Test Laboratory: HUAWEI SAR/HAC Lab

## ELE-L04 UMTS Band IV 1413CH Left Cheek-Main Antenna

**DUT: ELE-L04; Type: Smart Phone; Serial: SAR4**

Communication System: UID 0, HW-UMTS-FDD(WCDMA) (0); Frequency: 1732.6 MHz; Duty Cycle: 1:1

Medium parameters used:  $f = 1733$  MHz;  $\sigma = 1.374$  S/m;  $\epsilon_r = 38.865$ ;  $\rho = 1000$  kg/m<sup>3</sup>

Phantom section: Left Section

DASY Configuration:

- ε Probe: EX3DV4 - SN7381; ConvF(8.79, 8.79, 8.79) @ 1732.6 MHz; Calibrated: 2018-9-28
- ε Sensor-Surface: 1.4mm (Mechanical Surface Detection),  $z = 1.0, 31.0$
- ε Electronics: DAE4 Sn1236; Calibrated: 2018-7-18
- ε Phantom: SAM7; Type: SAM; Serial: 1594
- ε DASY52 52.10.1(1476); SEMCAD X 14.6.11(7439)

**Configuration/Head/Area Scan (8x14x1):** Measurement grid:  $dx=15$ mm,  $dy=15$ mm

Maximum value of SAR (measured) = 0.287 W/kg

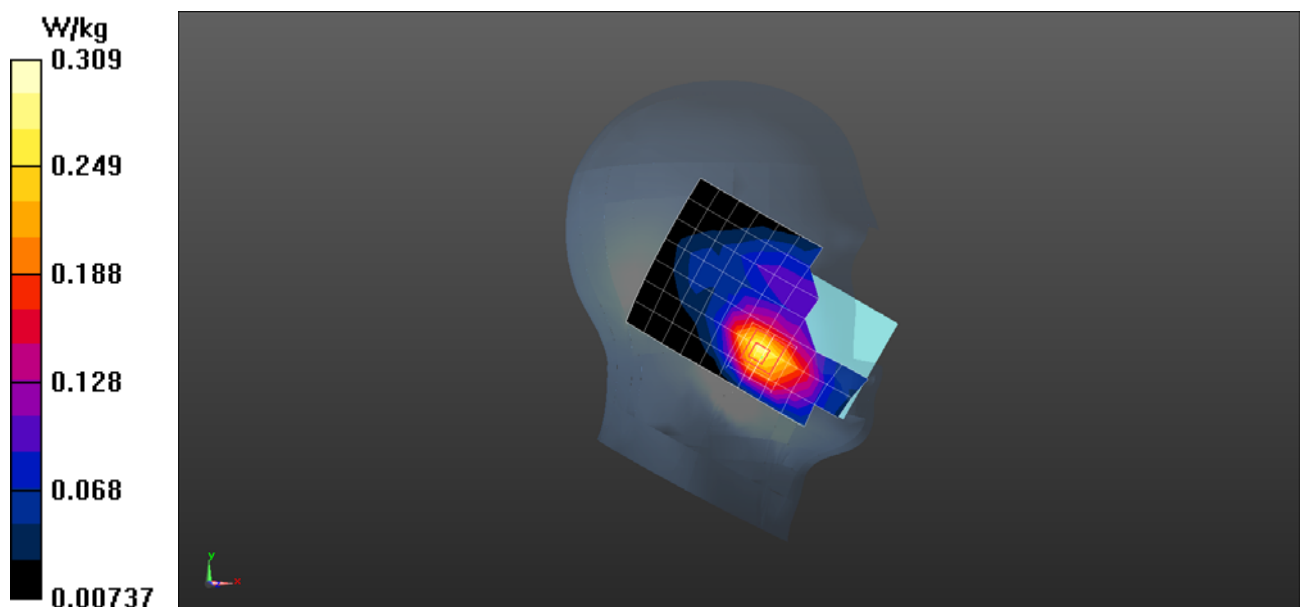
**Configuration/Head/Zoom Scan (5x5x5)/Cube 0:** Measurement grid:  $dx=8$ mm,  $dy=8$ mm,  $dz=5$ mm

Reference Value = 6.125 V/m; Power Drift = 0.02 dB

Peak SAR (extrapolated) = 0.349 W/kg

**SAR(1 g) = 0.233 W/kg; SAR(10 g) = 0.149 W/kg**

Maximum value of SAR (measured) = 0.309 W/kg



Test Laboratory: HUAWEI SAR/HAC Lab

## ELE-L04 UMTS Band IV 1413CH Back Side 15mm-Second Antenna

**DUT: ELE-L04; Type: Smart Phone; Serial: SAR4**

Communication System: UID 0, HW-UMTS-FDD(WCDMA) (0); Frequency: 1732.6 MHz; Duty Cycle: 1:1

Medium parameters used:  $f = 1733$  MHz;  $\sigma = 1.456$  S/m;  $\epsilon_r = 52.899$ ;  $\rho = 1000$  kg/m<sup>3</sup>

Phantom section: Center Section

DASY Configuration:

- Probe: EX3DV4 - SN7381; ConvF(8.61, 8.61, 8.61) @ 1732.6 MHz; Calibrated: 2018-9-28
- Sensor-Surface: 1.4mm (Mechanical Surface Detection),  $z = 1.0, 31.0$
- Electronics: DAE4 Sn1236; Calibrated: 2018-7-18
- Phantom: Triple Flat Phantom 5.1C; Type: MFP V5.1 C; Serial: 1176/2
- DASY52 52.10.1(1476); SEMCAD X 14.6.11(7439)

**Configuration/Body/Area Scan (9x14x1):** Measurement grid:  $dx=15$ mm,  $dy=15$ mm

Maximum value of SAR (measured) = 0.369 W/kg

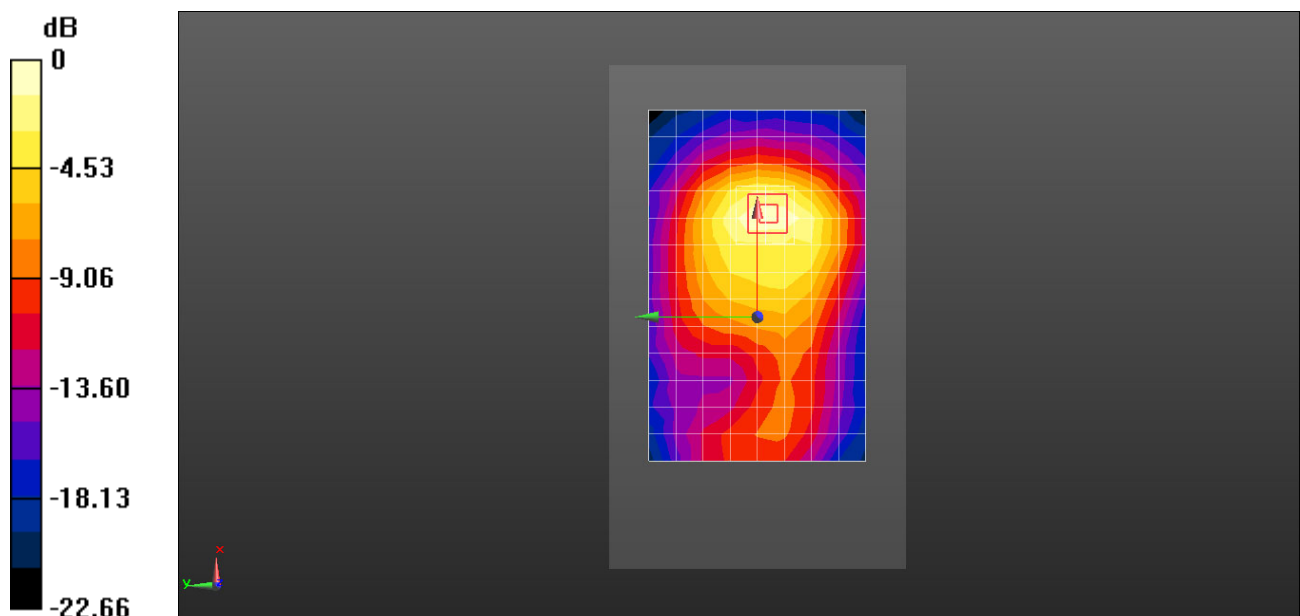
**Configuration/Body/Zoom Scan (5x5x7)/Cube 0:** Measurement grid:  $dx=8$ mm,  $dy=8$ mm,  $dz=5$ mm

Reference Value = 7.631 V/m; Power Drift = -0.08 dB

Peak SAR (extrapolated) = 0.452 W/kg

**SAR(1 g) = 0.283 W/kg; SAR(10 g) = 0.168 W/kg**

Maximum value of SAR (measured) = 0.395 W/kg



0 dB = 0.369 W/kg = -4.33 dBW/kg



Test Laboratory: HUAWEI SAR/HAC Lab

## ELE-L04 UMTS Band IV 1413CH Front Side 15mm-Main Antenna

**DUT: ELE-L04; Type: Smart Phone; Serial: SAR4**

Communication System: UID 0, HW-UMTS-FDD(WCDMA) (0); Frequency: 1732.6 MHz; Duty Cycle: 1:1

Medium parameters used:  $f = 1733$  MHz;  $\sigma = 1.484$  S/m;  $\epsilon_r = 53.254$ ;  $\rho = 1000$  kg/m<sup>3</sup>

Phantom section: Center Section

DASY Configuration:

- ε Probe: EX3DV4 - SN7381; ConvF(8.61, 8.61, 8.61) @ 1732.6 MHz; Calibrated: 2018-9-28
- ε Sensor-Surface: 1.4mm (Mechanical Surface Detection),  $z = 1.0, 31.0$
- ε Electronics: DAE4 Sn1236; Calibrated: 2018-7-18
- ε Phantom: Triple Flat Phantom 5.1C; Type: MFP V5.1 C; Serial: 1176/2
- ε DASY52 52.10.1(1476); SEMCAD X 14.6.11(7439)

**Configuration/Body/Area Scan (8x13x1):** Measurement grid:  $dx=15$ mm,  $dy=15$ mm

Maximum value of SAR (measured) = 0.528 W/kg

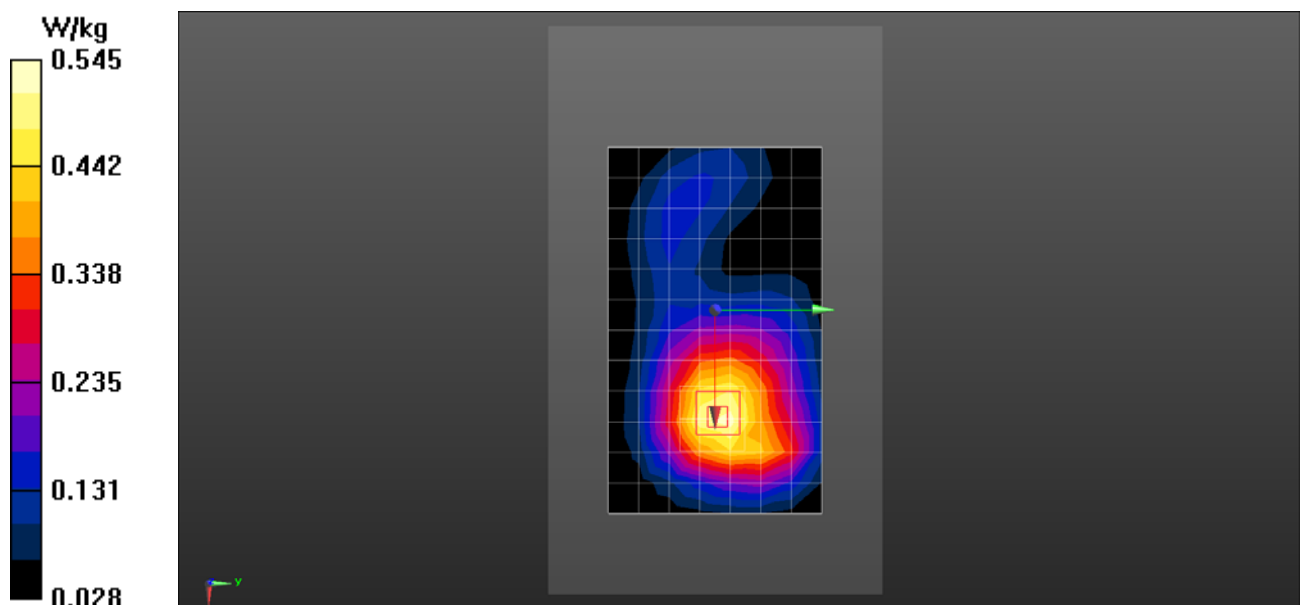
**Configuration/Body/Zoom Scan (5x5x7)/Cube 0:** Measurement grid:  $dx=8$ mm,  $dy=8$ mm,  $dz=5$ mm

Reference Value = 9.919 V/m; Power Drift = -0.19 dB

Peak SAR (extrapolated) = 0.632 W/kg

**SAR(1 g) = 0.407 W/kg; SAR(10 g) = 0.268 W/kg**

Maximum value of SAR (measured) = 0.545 W/kg



Test Laboratory: HUAWEI SAR/HAC Lab

## ELE-L04 UMTS Band IV 1413CH Top Side 10mm-Second Antenna

**DUT: ELE-L04; Type: Smart Phone; Serial: SAR4**

Communication System: UID 0, HW-UMTS-FDD(WCDMA) (0); Frequency: 1732.6 MHz; Duty Cycle: 1:1

Medium parameters used:  $f = 1733$  MHz;  $\sigma = 1.456$  S/m;  $\epsilon_r = 52.899$ ;  $\rho = 1000$  kg/m<sup>3</sup>

Phantom section: Center Section

DASY Configuration:

- Probe: EX3DV4 - SN7381; ConvF(8.61, 8.61, 8.61) @ 1732.6 MHz; Calibrated: 2018-9-28
- Sensor-Surface: 1.4mm (Mechanical Surface Detection),  $z = 1.0, 31.0$
- Electronics: DAE4 Sn1236; Calibrated: 2018-7-18
- Phantom: Triple Flat Phantom 5.1C; Type: MFP V5.1 C; Serial: 1176/2
- DASY52 52.10.1(1476); SEMCAD X 14.6.11(7439)

**Configuration/Body/Area Scan (5x9x1):** Measurement grid:  $dx=15$ mm,  $dy=15$ mm

Maximum value of SAR (measured) = 0.300 W/kg

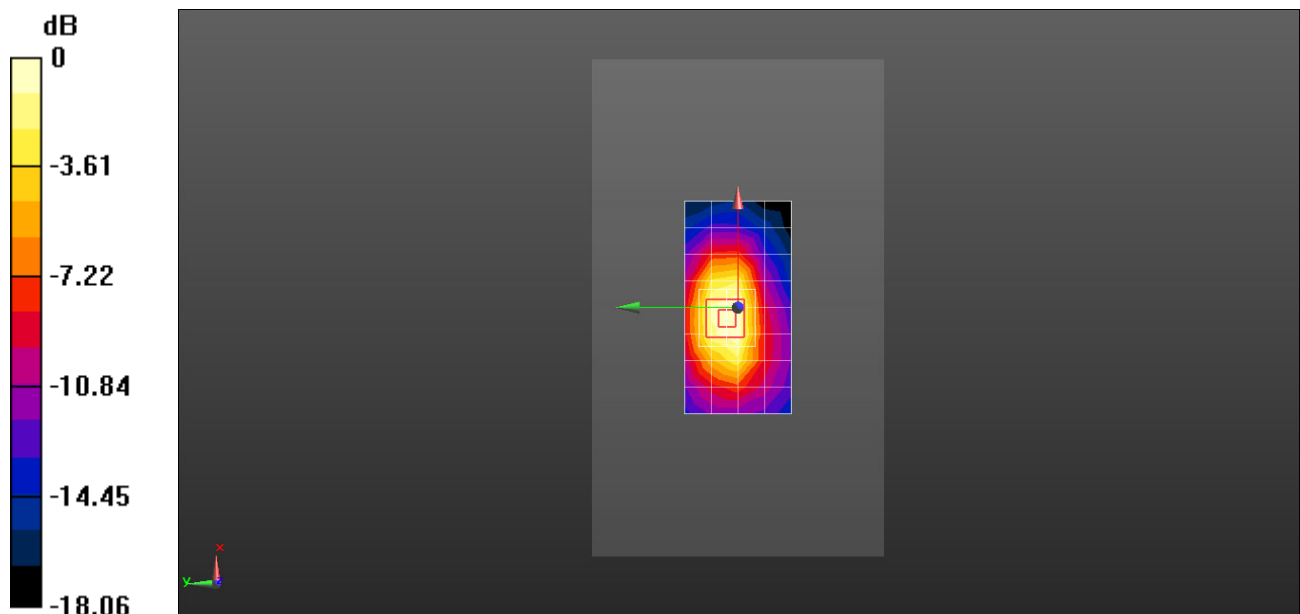
**Configuration/Body/Zoom Scan (5x5x7)/Cube 0:** Measurement grid:  $dx=8$ mm,  $dy=8$ mm,  $dz=5$ mm

Reference Value = 15.14 V/m; Power Drift = 0.01 dB

Peak SAR (extrapolated) = 0.486 W/kg

**SAR(1 g) = 0.294 W/kg; SAR(10 g) = 0.163 W/kg**

Maximum value of SAR (measured) = 0.421 W/kg



0 dB = 0.300 W/kg = -5.23 dBW/kg

Test Laboratory: HUAWEI SAR/HAC Lab

## ELE-L04 UMTS Band IV 1413CH Bottom Side 10mm-Main Antenna

**DUT: ELE-L04; Type: Smart Phone; Serial: SAR4**

Communication System: UID 0, HW-UMTS-FDD(WCDMA) (0); Frequency: 1732.6 MHz; Duty Cycle: 1:1

Medium parameters used:  $f = 1733$  MHz;  $\sigma = 1.484$  S/m;  $\epsilon_r = 53.254$ ;  $\rho = 1000$  kg/m<sup>3</sup>

Phantom section: Center Section

DASY Configuration:

- Probe: EX3DV4 - SN7381; ConvF(8.61, 8.61, 8.61) @ 1732.6 MHz; Calibrated: 2018-9-28
- Sensor-Surface: 1.4mm (Mechanical Surface Detection),  $z = 1.0, 31.0$
- Electronics: DAE4 Sn1236; Calibrated: 2018-7-18
- Phantom: Triple Flat Phantom 5.1C; Type: MFP V5.1 C; Serial: 1176/2
- DASY52 52.10.1(1476); SEMCAD X 14.6.11(7439)

**Configuration/Body/Area Scan (6x9x1):** Measurement grid:  $dx=15$ mm,  $dy=15$ mm

Maximum value of SAR (measured) = 0.768 W/kg

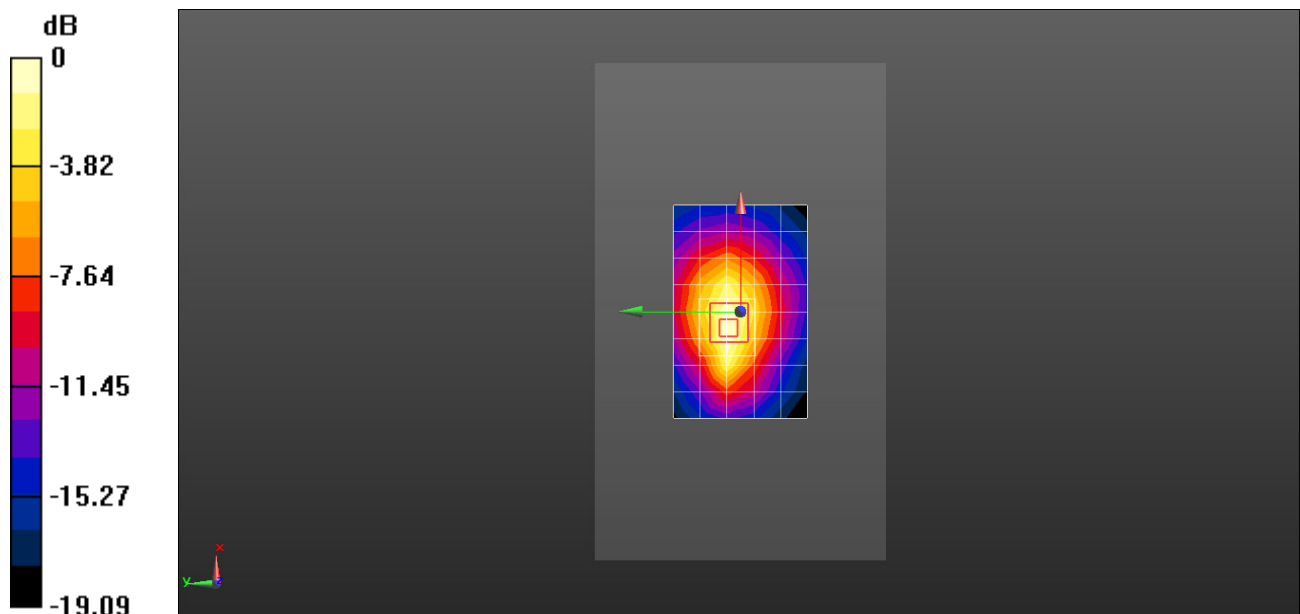
**Configuration/Body/Zoom Scan (5x5x7)/Cube 0:** Measurement grid:  $dx=8$ mm,  $dy=8$ mm,  $dz=5$ mm

Reference Value = 20.37 V/m; Power Drift = 0.07 dB

Peak SAR (extrapolated) = 0.917 W/kg

**SAR(1 g) = 0.542 W/kg; SAR(10 g) = 0.312 W/kg**

Maximum value of SAR (measured) = 0.790 W/kg



0 dB = 0.768 W/kg = -1.15 dBW/kg

Test Laboratory: HUAWEI SAR/HAC Lab

## ELE-L04 UMTS Band IV 1413CH Bottom Side 0mm with Battery2-Main Antenna

**DUT: ELE-L04; Type: Smart Phone; Serial: SAR4**

Communication System: UID 0, HW-UMTS-FDD(WCDMA) (0); Frequency: 1732.6 MHz; Duty Cycle: 1:1

Medium parameters used:  $f = 1733$  MHz;  $\sigma = 1.456$  S/m;  $\epsilon_r = 52.899$ ;  $\rho = 1000$  kg/m<sup>3</sup>

Phantom section: Center Section

DASY Configuration:

- Probe: EX3DV4 - SN7381; ConvF(8.61, 8.61, 8.61) @ 1732.6 MHz; Calibrated: 2018-9-28
- Sensor-Surface: 1.4mm (Mechanical Surface Detection),  $z = 1.0, 31.0$
- Electronics: DAE4 Sn1236; Calibrated: 2018-7-18
- Phantom: Triple Flat Phantom 5.1C; Type: MFP V5.1 C; Serial: 1176/2
- DASY52 52.10.1(1476); SEMCAD X 14.6.11(7439)

**Configuration/Body/Area Scan (5x9x1):** Measurement grid:  $dx=15$ mm,  $dy=15$ mm

Maximum value of SAR (measured) = 3.62 W/kg

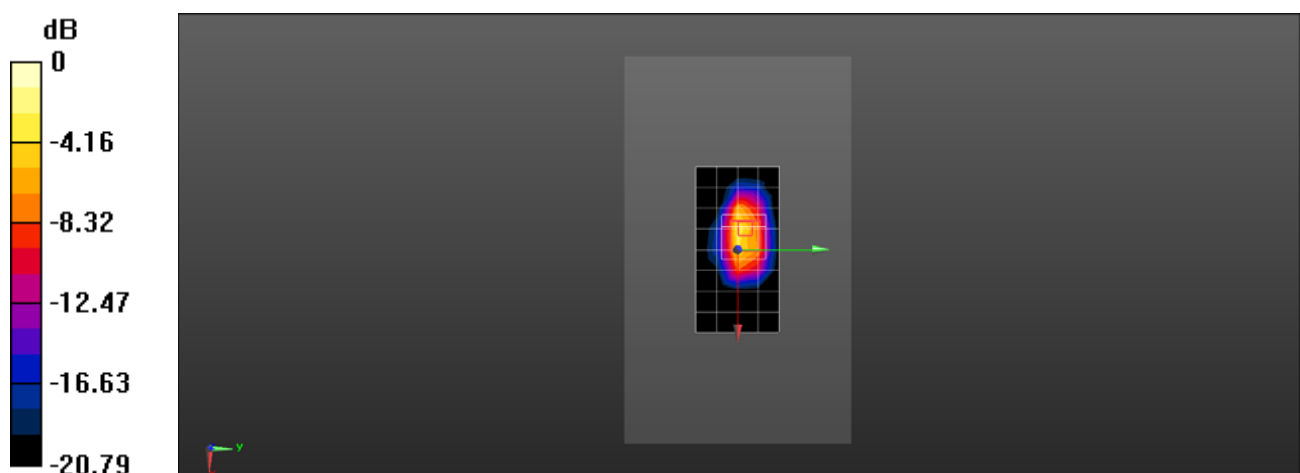
**Configuration/Body/Zoom Scan (5x5x7)/Cube 0:** Measurement grid:  $dx=8$ mm,  $dy=8$ mm,  $dz=5$ mm

Reference Value = 46.52 V/m; Power Drift = 0.09 dB

Peak SAR (extrapolated) = 8.54 W/kg

**SAR(1 g) = 3.19 W/kg; SAR(10 g) = 1.44 W/kg**

Maximum value of SAR (measured) = 7.01 W/kg



0 dB = 7.01 W/kg = 8.46 dBW/kg

Test Laboratory: HUAWEI SAR/HAC Lab

## ELE-L04 UMTS Band V 4233CH Right Cheek with Battery2-Second Antenna

**DUT: ELE-L04; Type: Smart Phone; Serial: SAR5**

Communication System: UID 0, HW-UMTS-FDD(WCDMA) (0); Frequency: 846.6 MHz; Duty Cycle: 1:1

Medium parameters used:  $f = 847$  MHz;  $\sigma = 0.938$  S/m;  $\epsilon_r = 41.034$ ;  $\rho = 1000$  kg/m<sup>3</sup>

Phantom section: Right Section

DASY Configuration:

- Probe: EX3DV4 - SN7489; ConvF(10.39, 10.39, 10.39) @ 846.6 MHz; Calibrated: 2018-1-9
- Sensor-Surface: 1.4mm (Mechanical Surface Detection),  $z = 1.0, 31.0$
- Electronics: DAE4 Sn1531; Calibrated: 2018-1-3
- Phantom: SAM8; Type: SAM; Serial: 1940
- DASY52 52.10.1(1476); SEMCAD X 14.6.11(7439)

**Configuration/Head/Area Scan (8x13x1):** Measurement grid:  $dx=15$ mm,  $dy=15$ mm

Maximum value of SAR (measured) = 0.337 W/kg

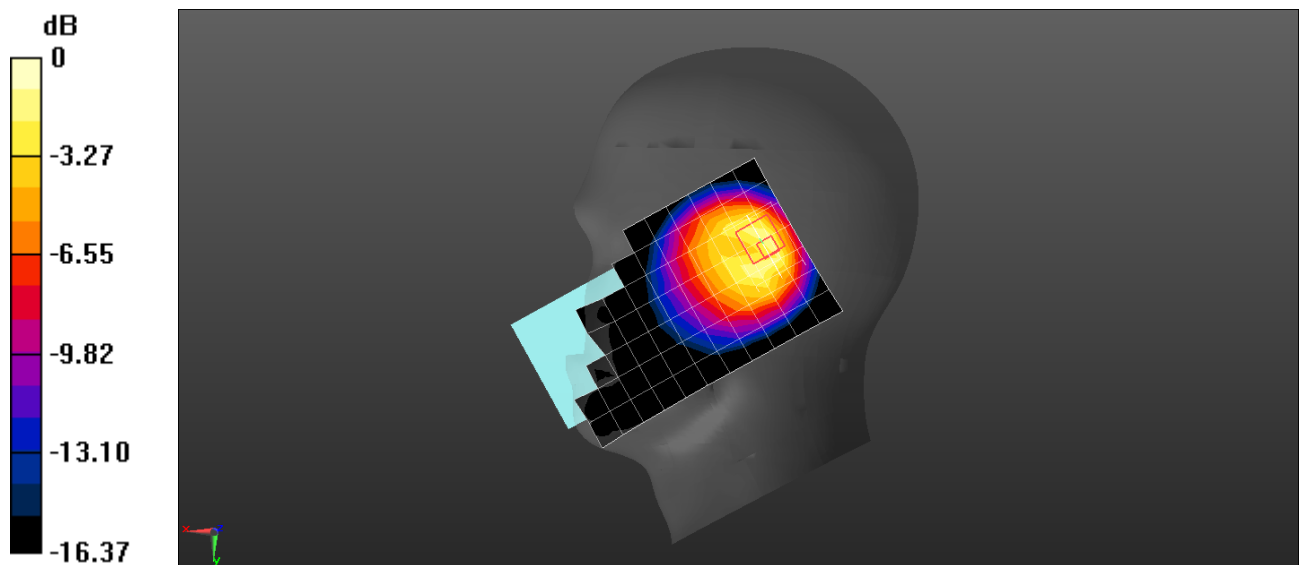
**Configuration/Head/Zoom Scan (6x5x7)/Cube 0:** Measurement grid:  $dx=8$ mm,  $dy=8$ mm,  $dz=5$ mm

Reference Value = 19.09 V/m; Power Drift = -0.09 dB

Peak SAR (extrapolated) = 0.544 W/kg

**SAR(1 g) = 0.257 W/kg; SAR(10 g) = 0.137 W/kg**

Maximum value of SAR (measured) = 0.444 W/kg



0 dB = 0.444 W/kg = -3.53 dBW/kg

Test Laboratory: HUAWEI SAR/HAC Lab

## ELE-L04 UMTS Band V 4132CH Right Cheek-Main Antenna

**DUT: ELE-L04; Type: Smart Phone; Serial: SAR5**

Communication System: UID 0, HW-UMTS-FDD(WCDMA) (0); Frequency: 826.4 MHz; Duty Cycle: 1:1

Medium parameters used (interpolated):  $f = 826.4$  MHz;  $\sigma = 0.931$  S/m;  $\epsilon_r = 41.095$ ;  $\rho = 1000$  kg/m<sup>3</sup>

Phantom section: Right Section

DASY Configuration:

- Probe: EX3DV4 - SN7489; ConvF(10.39, 10.39, 10.39) @ 826.4 MHz; Calibrated: 2018-1-9
- Sensor-Surface: 1.4mm (Mechanical Surface Detection),  $z = 1.0, 31.0$
- Electronics: DAE4 Sn1531; Calibrated: 2018-1-3
- Phantom: SAM8; Type: SAM; Serial: 1940
- DASY52 52.10.1(1476); SEMCAD X 14.6.11(7439)

**Configuration/Head/Area Scan (8x13x1):** Measurement grid:  $dx=15$ mm,  $dy=15$ mm

[Info: Interpolated medium parameters used for SAR evaluation.](#)

Maximum value of SAR (measured) = 0.136 W/kg

**Configuration/Head/Zoom Scan (6x5x7)/Cube 0:** Measurement grid:  $dx=8$ mm,  $dy=8$ mm,  $dz=5$ mm

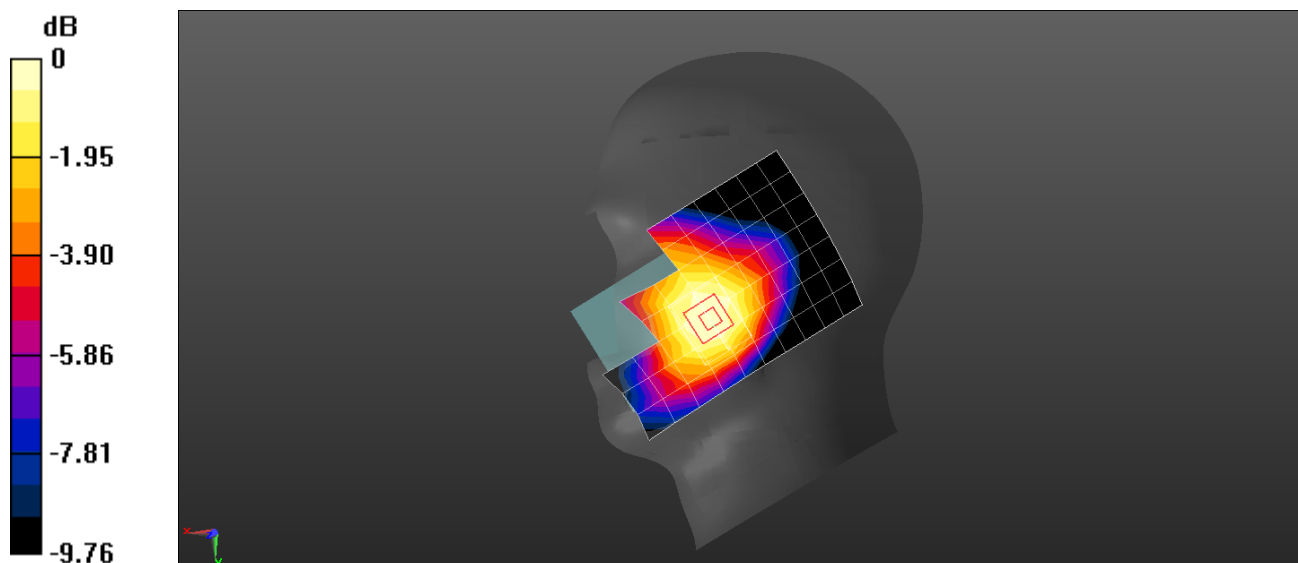
Reference Value = 8.421 V/m; Power Drift = 0.05 dB

Peak SAR (extrapolated) = 0.144 W/kg

**SAR(1 g) = 0.123 W/kg; SAR(10 g) = 0.098 W/kg**

[Info: Interpolated medium parameters used for SAR evaluation.](#)

Maximum value of SAR (measured) = 0.137 W/kg



0 dB = 0.137 W/kg = -8.63 dBW/kg

Test Laboratory: HUAWEI SAR/HAC Lab

## ELE-L04 UMTS Band V 4233CH Back Side 15mm-Second Antenna

**DUT: ELE-L04; Type: Smart Phone; Serial: SAR1**

Communication System: UID 0, HW-UMTS-FDD(WCDMA) (0); Frequency: 846.6 MHz; Duty Cycle: 1:1

Medium parameters used:  $f = 847$  MHz;  $\sigma = 1.018$  S/m;  $\epsilon_r = 52.681$ ;  $\rho = 1000$  kg/m<sup>3</sup>

Phantom section: Flat Section

DASY Configuration:

- Probe: EX3DV4 - SN3744; ConvF(9.12, 9.12, 9.12) @ 846.6 MHz; Calibrated: 2018-7-25
- Sensor-Surface: 1.4mm (Mechanical Surface Detection),  $z = 1.0, 31.0$
- Electronics: DAE3 Sn393; Calibrated: 2018-8-14
- Phantom: SAM2; Type: SAM; Serial: 1474
- DASY52 52.10.1(1476); SEMCAD X 14.6.11(7439)

**Configuration/Body/Area Scan (9x14x1):** Measurement grid:  $dx=15$ mm,  $dy=15$ mm

Maximum value of SAR (measured) = 0.226 W/kg

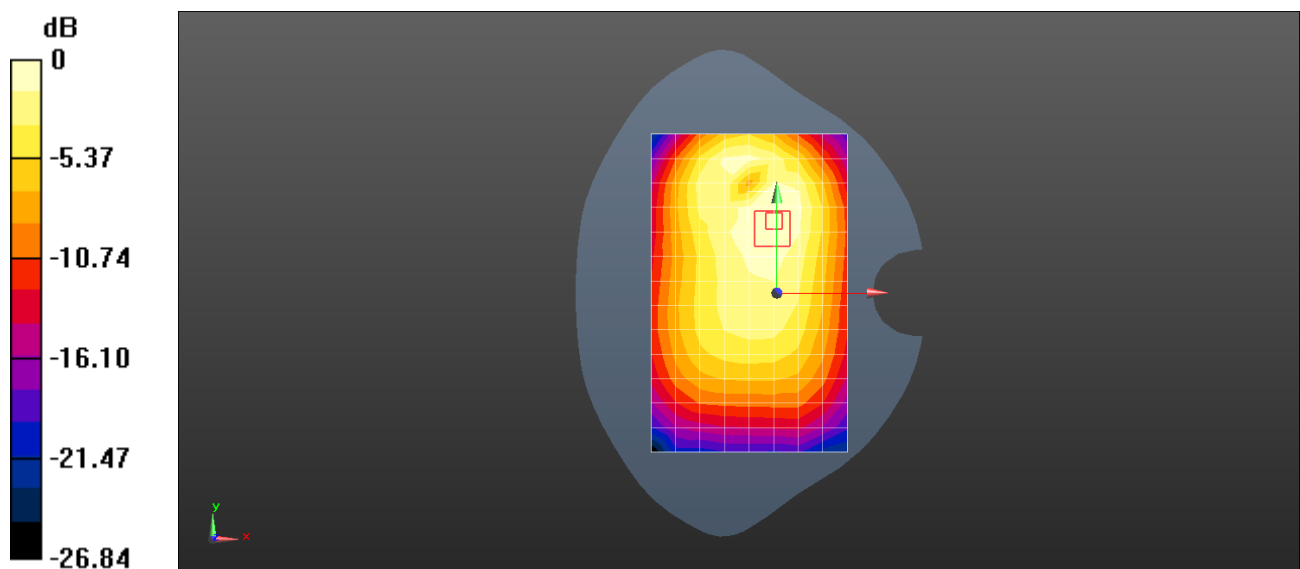
**Configuration/Body/Zoom Scan (5x6x7)/Cube 0:** Measurement grid:  $dx=8$ mm,  $dy=8$ mm,  $dz=5$ mm

Reference Value = 12.30 V/m; Power Drift = -0.10 dB

Peak SAR (extrapolated) = 0.259 W/kg

**SAR(1 g) = 0.185 W/kg; SAR(10 g) = 0.129 W/kg**

Maximum value of SAR (measured) = 0.234 W/kg



0 dB = 0.226 W/kg = -6.46 dBW/kg

Test Laboratory: HUAWEI SAR/HAC Lab

## **ELE-L04 UMTS Band V 4132CH Back Side 15mm with Battery2-Main Antenna**

**DUT: ELE-L04; Type: Smart Phone; Serial: SAR1**

Communication System: UID 0, HW-UMTS-FDD(WCDMA) (0); Frequency: 826.4 MHz; Duty Cycle: 1:1

Medium parameters used (interpolated):  $f = 826.4$  MHz;  $\sigma = 1.011$  S/m;  $\epsilon_r = 52.744$ ;  $\rho = 1000$  kg/m<sup>3</sup>

Phantom section: Flat Section

DASY Configuration:

- Probe: EX3DV4 - SN3744; ConvF(9.12, 9.12, 9.12) @ 826.4 MHz; Calibrated: 2018-7-25
- Sensor-Surface: 1.4mm (Mechanical Surface Detection),  $z = 1.0, 31.0$
- Electronics: DAE3 Sn393; Calibrated: 2018-8-14
- Phantom: SAM2; Type: SAM; Serial: 1474
- DASY52 52.10.1(1476); SEMCAD X 14.6.11(7439)

**Configuration/Body/Area Scan (9x14x1):** Measurement grid:  $dx=15$ mm,  $dy=15$ mm

[Info: Interpolated medium parameters used for SAR evaluation.](#)

Maximum value of SAR (measured) = 0.371 W/kg

**Configuration/Body/Zoom Scan (5x5x7)/Cube 0:** Measurement grid:  $dx=8$ mm,  $dy=8$ mm,  $dz=5$ mm

Reference Value = 12.93 V/m; Power Drift = -0.07 dB

Peak SAR (extrapolated) = 0.438 W/kg

**SAR(1 g) = 0.321 W/kg; SAR(10 g) = 0.232 W/kg**

[Info: Interpolated medium parameters used for SAR evaluation.](#)

Maximum value of SAR (measured) = 0.399 W/kg

**Configuration/Body/Zoom Scan (5x5x7)/Cube 1:** Measurement grid:  $dx=8$ mm,  $dy=8$ mm,  $dz=5$ mm

Reference Value = 12.93 V/m; Power Drift = -0.07 dB

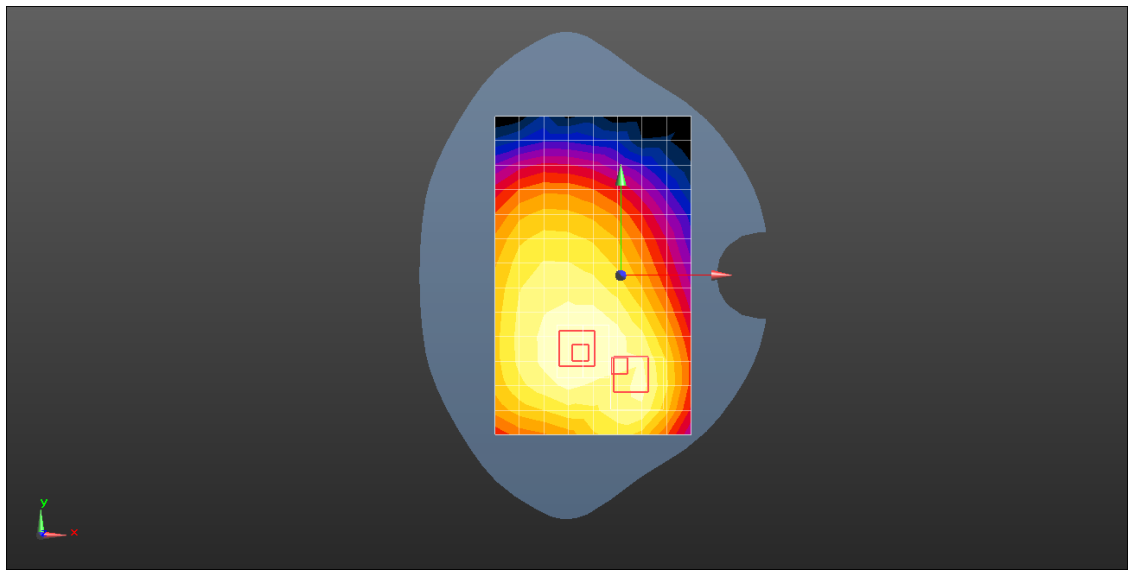
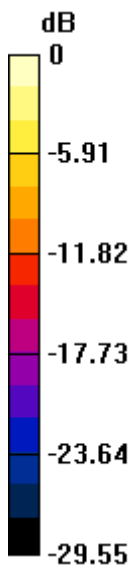
Peak SAR (extrapolated) = 0.343 W/kg

**SAR(1 g) = 0.210 W/kg; SAR(10 g) = 0.133 W/kg**

[Info: Interpolated medium parameters used for SAR evaluation.](#)

Maximum value of SAR (measured) = 0.306 W/kg





0 dB = 0.371 W/kg = -4.31 dBW/kg

Test Laboratory: HUAWEI SAR/HAC Lab

## **ELE-L04 UMTS Band V 4233CH Back Side 10mm with Battery2-Second Antenna**

**DUT: ELE-L04; Type: Smart Phone; Serial: SAR1**

Communication System: UID 0, HW-UMTS-FDD(WCDMA) (0); Frequency: 846.6 MHz; Duty Cycle: 1:1

Medium parameters used:  $f = 847$  MHz;  $\sigma = 1.018$  S/m;  $\epsilon_r = 52.681$ ;  $\rho = 1000$  kg/m<sup>3</sup>

Phantom section: Flat Section

DASY Configuration:

- Probe: EX3DV4 - SN3744; ConvF(9.12, 9.12, 9.12) @ 846.6 MHz; Calibrated: 2018-7-25
- Sensor-Surface: 1.4mm (Mechanical Surface Detection),  $z = 1.0, 31.0$
- Electronics: DAE3 Sn393; Calibrated: 2018-8-14
- Phantom: SAM2; Type: SAM; Serial: 1474
- DASY52 52.10.1(1476); SEMCAD X 14.6.11(7439)

**Configuration/Body/Area Scan (9x14x1):** Measurement grid:  $dx=15$ mm,  $dy=15$ mm

Maximum value of SAR (measured) = 0.224 W/kg

**Configuration/Body/Zoom Scan (6x5x7)/Cube 0:** Measurement grid:  $dx=8$ mm,  $dy=8$ mm,  $dz=5$ mm

Reference Value = 9.773 V/m; Power Drift = -0.09 dB

Peak SAR (extrapolated) = 0.324 W/kg

**SAR(1 g) = 0.174 W/kg; SAR(10 g) = 0.096 W/kg**

Maximum value of SAR (measured) = 0.245 W/kg

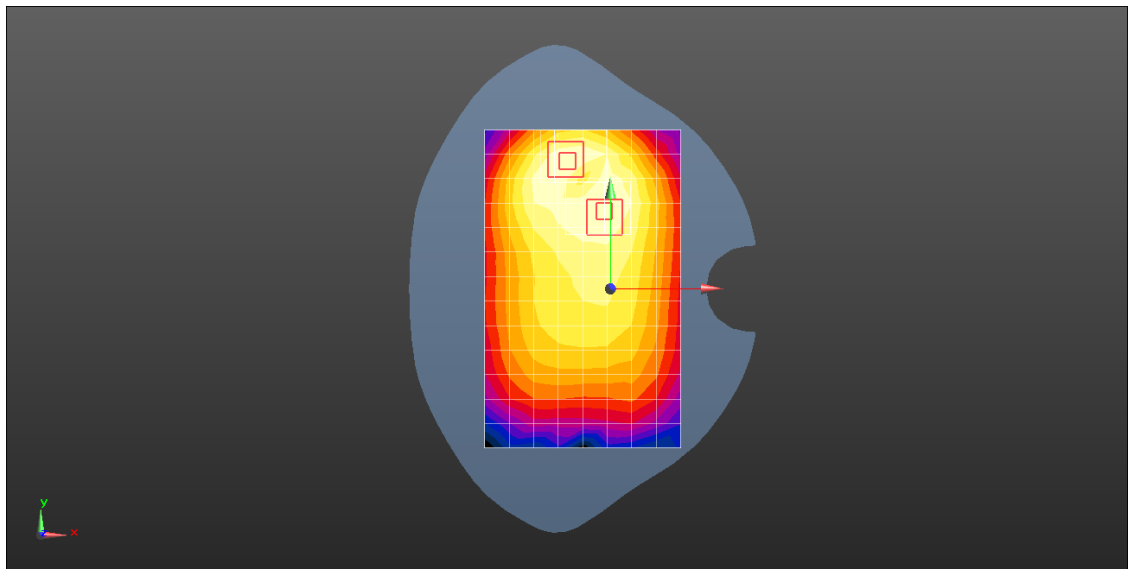
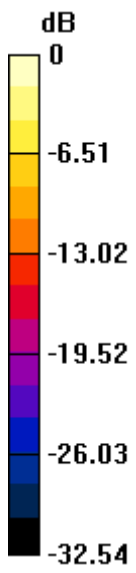
**Configuration/Body/Zoom Scan (6x5x7)/Cube 1:** Measurement grid:  $dx=8$ mm,  $dy=8$ mm,  $dz=5$ mm

Reference Value = 9.773 V/m; Power Drift = -0.09 dB

Peak SAR (extrapolated) = 0.245 W/kg

**SAR(1 g) = 0.162 W/kg; SAR(10 g) = 0.109 W/kg**

Maximum value of SAR (measured) = 0.209 W/kg



0 dB = 0.224 W/kg = -6.50 dBW/kg

Test Laboratory: HUAWEI SAR/HAC Lab

## ELE-L04 UMTS Band V 4182CH Back Side 10mm-Main Antenna

**DUT: ELE-L04; Type: Smart Phone; Serial: SAR1**

Communication System: UID 0, HW-UMTS-FDD(WCDMA) (0); Frequency: 836.4 MHz; Duty Cycle: 1:1

Medium parameters used (interpolated):  $f = 836.4$  MHz;  $\sigma = 1.015$  S/m;  $\epsilon_r = 52.715$ ;  $\rho = 1000$  kg/m<sup>3</sup>

Phantom section: Flat Section

DASY Configuration:

- Probe: EX3DV4 - SN3744; ConvF(9.12, 9.12, 9.12) @ 836.4 MHz; Calibrated: 2018-7-25
- Sensor-Surface: 1.4mm (Mechanical Surface Detection),  $z = 1.0, 31.0$
- Electronics: DAE3 Sn393; Calibrated: 2018-8-14
- Phantom: SAM2; Type: SAM; Serial: 1474
- DASY52 52.10.1(1476); SEMCAD X 14.6.11(7439)

**Configuration/Body/Area Scan (9x14x1):** Measurement grid:  $dx=15$ mm,  $dy=15$ mm

[Info: Interpolated medium parameters used for SAR evaluation.](#)

Maximum value of SAR (measured) = 0.500 W/kg

**Configuration/Body/Zoom Scan (5x5x7)/Cube 0:** Measurement grid:  $dx=8$ mm,  $dy=8$ mm,  $dz=5$ mm

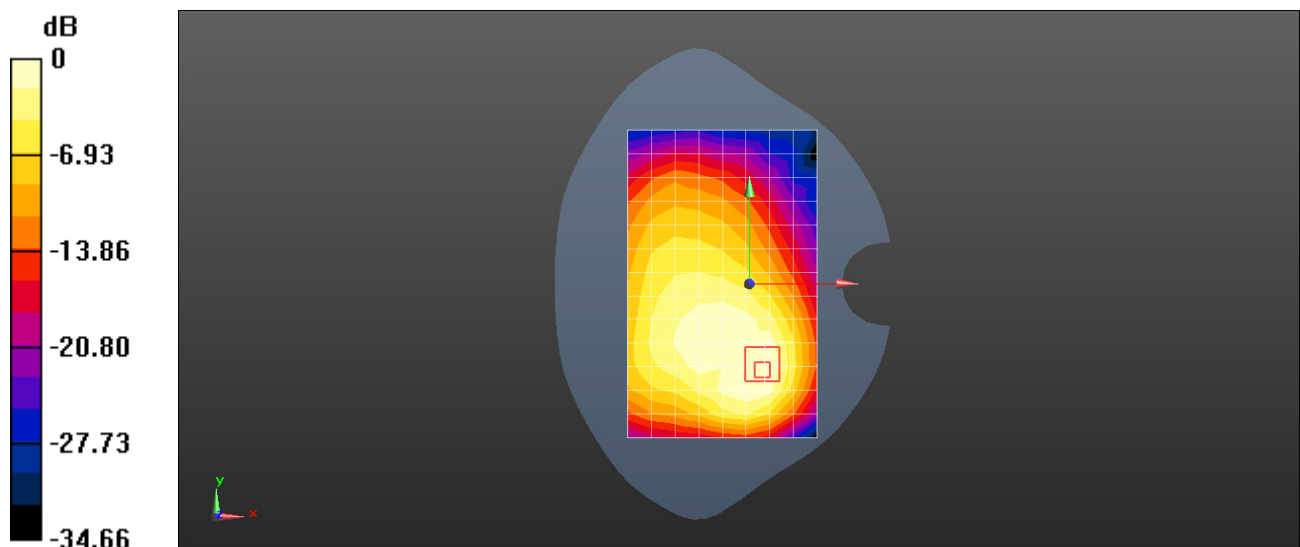
Reference Value = 14.83 V/m; Power Drift = -0.02 dB

Peak SAR (extrapolated) = 0.678 W/kg

**SAR(1 g) = 0.375 W/kg; SAR(10 g) = 0.219 W/kg**

[Info: Interpolated medium parameters used for SAR evaluation.](#)

Maximum value of SAR (measured) = 0.544 W/kg



0 dB = 0.500 W/kg = -3.01 dBW/kg

Test Laboratory: HUAWEI SAR/HAC Lab

## ELE-L04 LTE Band 2 20M QPSK 50%RB 50 Offset 19100CH Right Tilt-Second Antenna

**DUT: ELE-L04; Type: Smart Phone; Serial: SAR2**

Communication System: UID 0, LTE-FDD (SC-FDMA, 20MHz, QPSK/16-QAM) (0); Frequency: 1900 MHz; Duty Cycle: 1:1

Medium parameters used:  $f = 1900$  MHz;  $\sigma = 1.41$  S/m;  $\epsilon_r = 39.367$ ;  $\rho = 1000$  kg/m<sup>3</sup>

Phantom section: Right Section

DASY Configuration:

- Probe: EX3DV4 - SN3820; ConvF(7.57, 7.57, 7.57) @ 1900 MHz; Calibrated: 2018-6-26
- Sensor-Surface: 1.4mm (Mechanical Surface Detection),  $z = 1.0, 31.0$
- Electronics: DAE4 Sn913; Calibrated: 2018-5-11
- Phantom: SAM3; Type: SAM; Serial: 1597
- DASY52 52.10.1(1476); SEMCAD X 14.6.11(7439)

**Configuration/Head/Area Scan (8x13x1):** Measurement grid:  $dx=15$ mm,  $dy=15$ mm

Maximum value of SAR (measured) = 0.278 W/kg

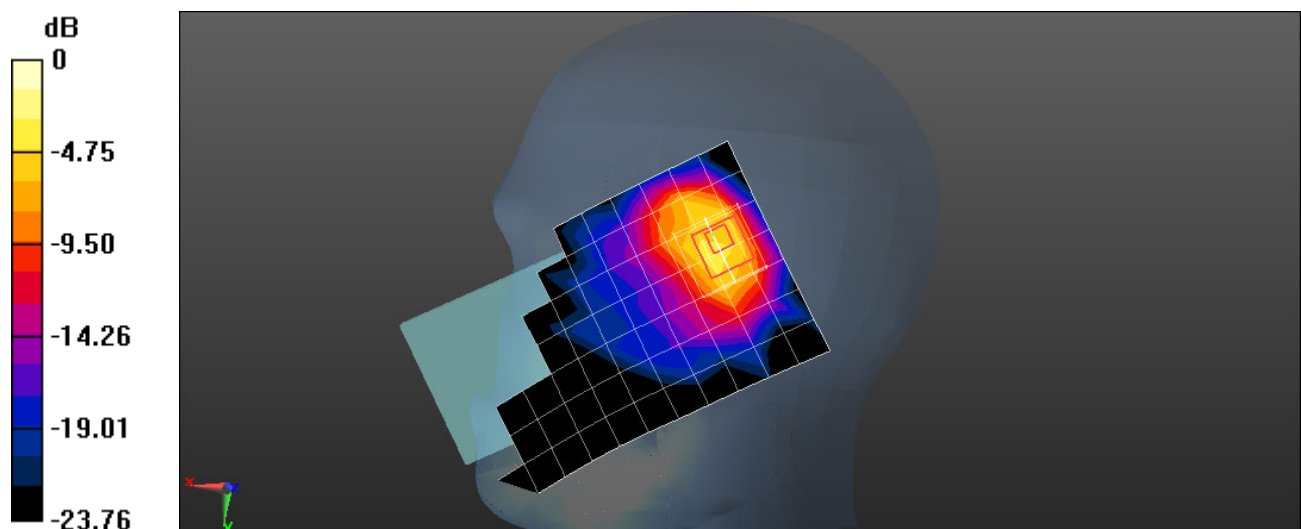
**Configuration/Head/Zoom Scan (5x5x7)/Cube 0:** Measurement grid:  $dx=8$ mm,  $dy=8$ mm,  $dz=5$ mm

Reference Value = 16.40 V/m; Power Drift = -0.03 dB

Peak SAR (extrapolated) = 0.723 W/kg

**SAR(1 g) = 0.289 W/kg; SAR(10 g) = 0.131 W/kg**

Maximum value of SAR (measured) = 0.578 W/kg



0 dB = 0.578 W/kg = -2.38 dBW/kg

Test Laboratory: HUAWEI SAR/HAC Lab

## ELE-L04 LTE Band 2 20M QPSK 1RB 0 Offset 18700CH Left Cheek-Main Antenna

**DUT: ELE-L04; Type: Smart Phone; Serial: SAR2**

Communication System: UID 0, LTE-FDD (SC-FDMA, 20MHz, QPSK/16-QAM) (0); Frequency: 1860 MHz; Duty Cycle: 1:1

Medium parameters used:  $f = 1860$  MHz;  $\sigma = 1.384$  S/m;  $\epsilon_r = 41.715$ ;  $\rho = 1000$  kg/m<sup>3</sup>

Phantom section: Left Section

DASY Configuration:

- Probe: ES3DV3 - SN3168; ConvF(5.2, 5.2, 5.2) @ 1860 MHz; Calibrated: 2018-9-27
- Sensor-Surface: 3mm (Mechanical Surface Detection),  $z = 2.0, 32.0$
- Electronics: DAE4 Sn1235; Calibrated: 2018-11-14
- Phantom: SAM3; Type: SAM; Serial: 1597
- DASY52 52.10.1(1476); SEMCAD X 14.6.11(7439)

**Configuration/Head/Area Scan (9x14x1):** Measurement grid:  $dx=15$ mm,  $dy=15$ mm

Maximum value of SAR (measured) = 0.236 W/kg

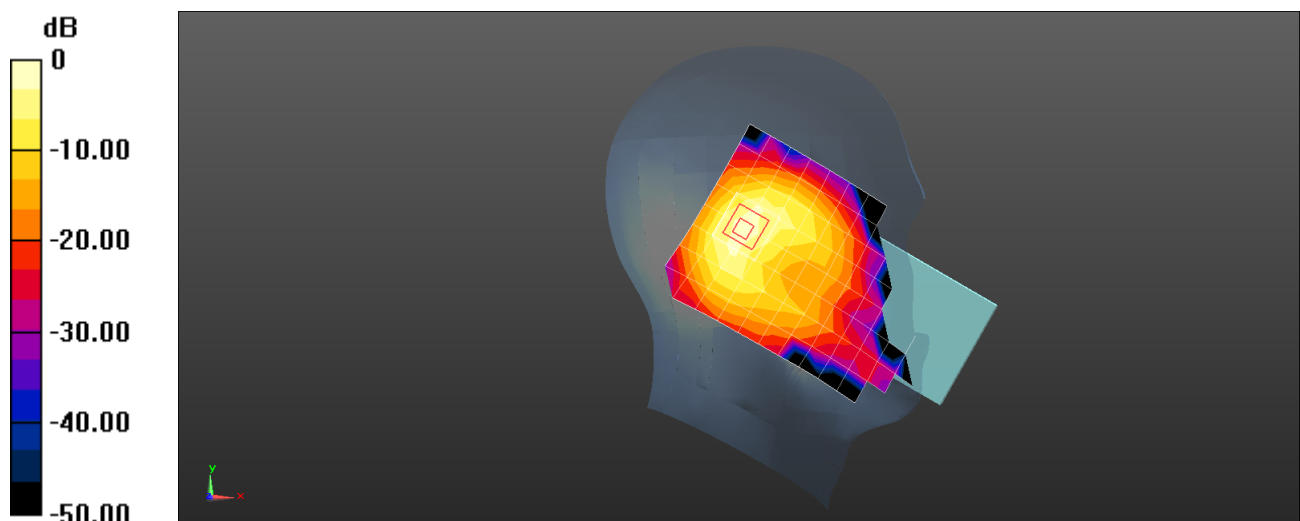
**Configuration/Head/Zoom Scan (5x5x7)/Cube 0:** Measurement grid:  $dx=8$ mm,  $dy=8$ mm,  $dz=5$ mm

Reference Value = 10.73 V/m; Power Drift = -0.16 dB

Peak SAR (extrapolated) = 0.306 W/kg

**SAR(1 g) = 0.183 W/kg; SAR(10 g) = 0.096 W/kg**

Maximum value of SAR (measured) = 0.232 W/kg



0 dB = 0.232 W/kg = -6.35 dBW/kg

Test Laboratory: HUAWEI SAR/HAC Lab

### **ELE-L04 LTE Band 2 20M QPSK 50%RB 0 Offset 18700CH Back Side 15mm with Battery2-Second Antenna**

**DUT: ELE-L04; Type: Smart Phone; Serial: SAR2**

Communication System: UID 0, LTE-FDD (SC-FDMA, 20MHz, QPSK/16-QAM) (0); Frequency: 1860 MHz; Duty Cycle: 1:1

Medium parameters used:  $f = 1860$  MHz;  $\sigma = 1.466$  S/m;  $\epsilon_r = 52.651$ ;  $\rho = 1000$  kg/m<sup>3</sup>

Phantom section: Flat Section

DASY Configuration:

- Probe: EX3DV4 - SN3820; ConvF(7.36, 7.36, 7.36) @ 1860 MHz; Calibrated: 2018-6-26
- Sensor-Surface: 1.4mm (Mechanical Surface Detection),  $z = 1.0, 31.0$
- Electronics: DAE4 Sn913; Calibrated: 2018-5-11
- Phantom: SAM4; Type: SAM; Serial: 1620
- DASY52 52.10.1(1476); SEMCAD X 14.6.11(7439)

**Configuration/Body/Area Scan (8x13x1):** Measurement grid:  $dx=15$ mm,  $dy=15$ mm

Maximum value of SAR (measured) = 0.167 W/kg

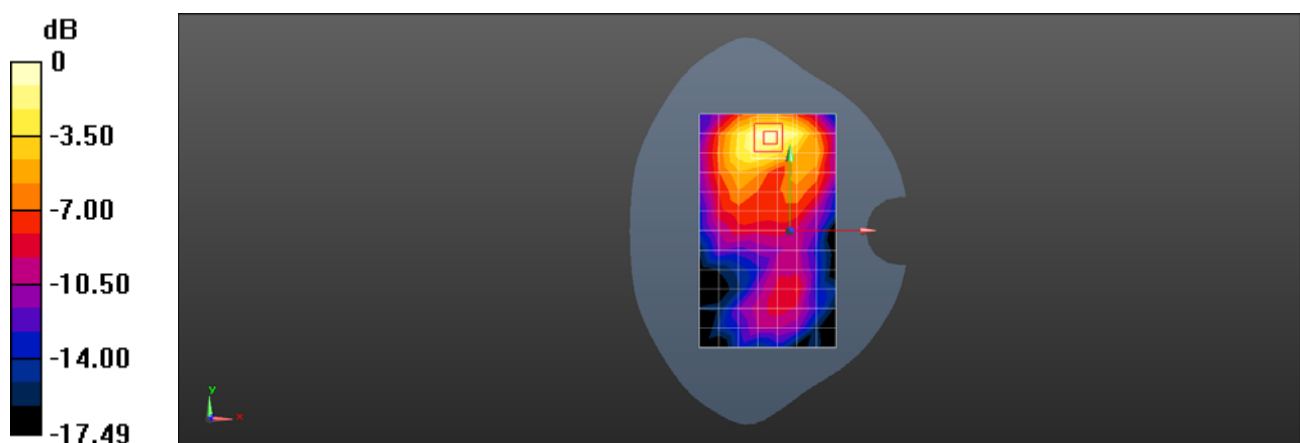
**Configuration/Body/Zoom Scan (5x5x7)/Cube 0:** Measurement grid:  $dx=8$ mm,  $dy=8$ mm,  $dz=5$ mm

Reference Value = 4.033 V/m; Power Drift = -0.02 dB

Peak SAR (extrapolated) = 0.210 W/kg

**SAR(1 g) = 0.132 W/kg; SAR(10 g) = 0.077 W/kg**

Maximum value of SAR (measured) = 0.183 W/kg



0 dB = 0.183 W/kg = -7.38 dBW/kg

Test Laboratory: HUAWEI SAR/HAC Lab

## ELE-L04 LTE Band 2 20M QPSK 1RB 0 Offset 18700CH Back Side 15mm-Main Antenna

**DUT: ELE-L04; Type: Smart Phone; Serial: SAR2**

Communication System: UID 0, LTE-FDD (SC-FDMA, 20MHz, QPSK/16-QAM) (0); Frequency: 1860 MHz; Duty Cycle: 1:1

Medium parameters used:  $f = 1860$  MHz;  $\sigma = 1.466$  S/m;  $\epsilon_r = 52.651$ ;  $\rho = 1000$  kg/m<sup>3</sup>

Phantom section: Flat Section

DASY Configuration:

- Probe: EX3DV4 - SN3820; ConvF(7.36, 7.36, 7.36) @ 1860 MHz; Calibrated: 2018-6-26
- Sensor-Surface: 1.4mm (Mechanical Surface Detection),  $z = 1.0, 31.0$
- Electronics: DAE4 Sn913; Calibrated: 2018-5-11
- Phantom: SAM4; Type: SAM; Serial: 1620
- DASY52 52.10.1(1476); SEMCAD X 14.6.11(7439)

**Configuration/Body/Area Scan (8x13x1):** Measurement grid:  $dx=15$ mm,  $dy=15$ mm

Maximum value of SAR (measured) = 0.329 W/kg

**Configuration/Body/Zoom Scan (5x5x7)/Cube 0:** Measurement grid:  $dx=8$ mm,  $dy=8$ mm,  $dz=5$ mm

Reference Value = 7.753 V/m; Power Drift = -0.13 dB

Peak SAR (extrapolated) = 0.394 W/kg

**SAR(1 g) = 0.262 W/kg; SAR(10 g) = 0.171 W/kg**

Maximum value of SAR (measured) = 0.348 W/kg

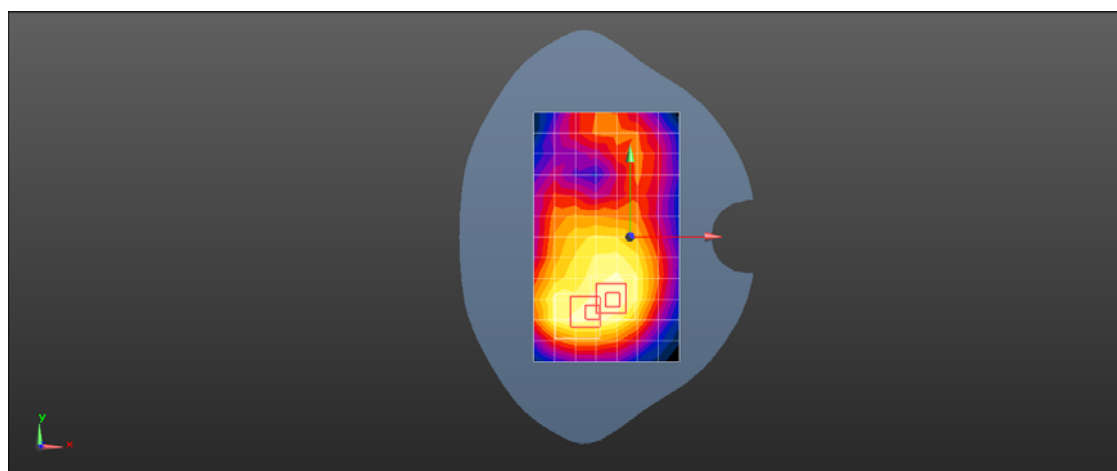
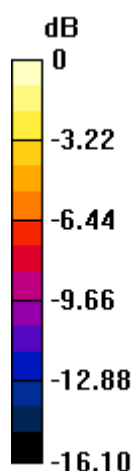
**Configuration/Body/Zoom Scan (5x5x7)/Cube 1:** Measurement grid:  $dx=8$ mm,  $dy=8$ mm,  $dz=5$ mm

Reference Value = 7.753 V/m; Power Drift = -0.13 dB

Peak SAR (extrapolated) = 0.364 W/kg

**SAR(1 g) = 0.228 W/kg; SAR(10 g) = 0.143 W/kg**

Maximum value of SAR (measured) = 0.317 W/kg



0 dB = 0.432 W/kg = -3.64 dBW/kg



Test Laboratory: HUAWEI SAR/HAC Lab

## ELE-L04 LTE Band 2 20M QPSK 50%RB 25 Offset 18700CH Top Side 10mm with Battery2-Second Antenna

**DUT: ELE-L04; Type: Smart Phone; Serial: SAR3**

Communication System: UID 0, LTE-FDD (SC-FDMA, 20MHz, QPSK/16-QAM) (0); Frequency: 1860 MHz; Duty Cycle: 1:1

Medium parameters used:  $f = 1860$  MHz;  $\sigma = 1.555$  S/m;  $\epsilon_r = 55.149$ ;  $\rho = 1000$  kg/m<sup>3</sup>

Phantom section: Flat Section

DASY Configuration:

- Probe: EX3DV4 - SN3744; ConvF(7.6, 7.6, 7.6) @ 1860 MHz; Calibrated: 2018-7-25
- Sensor-Surface: 1.4mm (Mechanical Surface Detection),  $z = 1.0, 31.0$
- Electronics: DAE4 Sn852; Calibrated: 2018-4-23
- Phantom: SAM5; Type: SAM; Serial: 1892
- DASY52 52.10.1(1476); SEMCAD X 14.6.11(7439)

**Configuration/Body/Area Scan (6x9x1):** Measurement grid:  $dx=15$ mm,  $dy=15$ mm

Maximum value of SAR (measured) = 0.177 W/kg

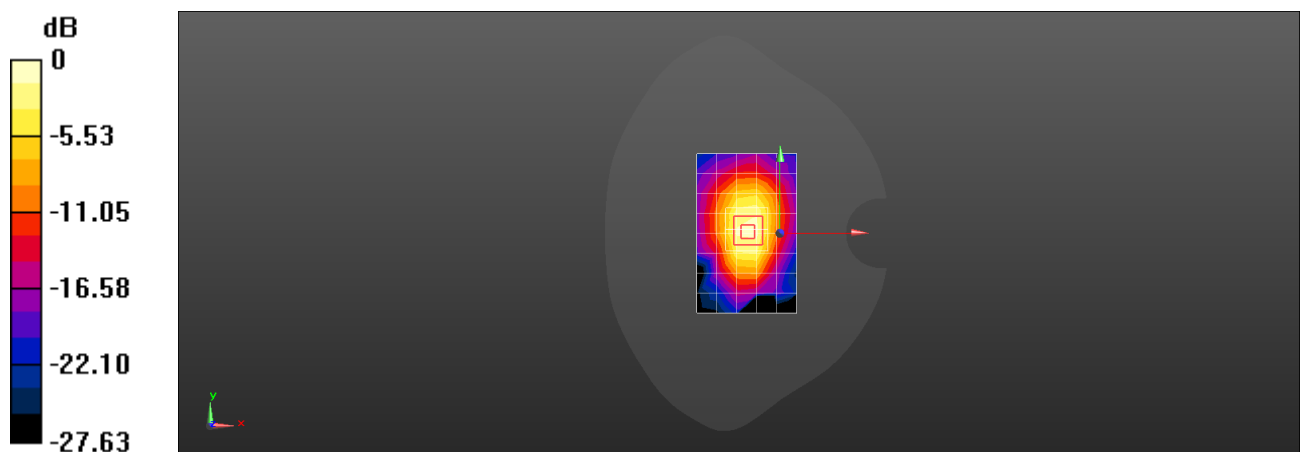
**Configuration/Body/Zoom Scan (5x5x7)/Cube 0:** Measurement grid:  $dx=8$ mm,  $dy=8$ mm,  $dz=5$ mm

Reference Value = 12.80 V/m; Power Drift = -0.00 dB

Peak SAR (extrapolated) = 0.281 W/kg

**SAR(1 g) = 0.158 W/kg; SAR(10 g) = 0.085 W/kg**

Maximum value of SAR (measured) = 0.235 W/kg



0 dB = 0.235 W/kg = -6.29 dBW/kg

Test Laboratory: HUAWEI SAR/HAC Lab

## ELE-L04 LTE Band 2 20M QPSK 50%RB 50 Offset 18700CH Bottom Side 10mm- Main Antenna

**DUT: ELE-L04; Type: Smart Phone; Serial: SAR2**

Communication System: UID 0, LTE-FDD (SC-FDMA, 20MHz, QPSK/16-QAM) (0); Frequency: 1860 MHz; Duty Cycle: 1:1

Medium parameters used:  $f = 1860$  MHz;  $\sigma = 1.471$  S/m;  $\epsilon_r = 52.401$ ;  $\rho = 1000$  kg/m<sup>3</sup>

Phantom section: Flat Section

DASY Configuration:

- Probe: EX3DV4 - SN3820; ConvF(7.36, 7.36, 7.36) @ 1860 MHz; Calibrated: 2018-6-26
- Sensor-Surface: 1.4mm (Mechanical Surface Detection),  $z = 1.0, 31.0$
- Electronics: DAE4 Sn913; Calibrated: 2018-5-11
- Phantom: SAM4; Type: SAM; Serial: 1620
- DASY52 52.10.1(1476); SEMCAD X 14.6.11(7439)

**Configuration/Body/Area Scan (5x9x1):** Measurement grid:  $dx=15$ mm,  $dy=15$ mm

Maximum value of SAR (measured) = 0.697 W/kg

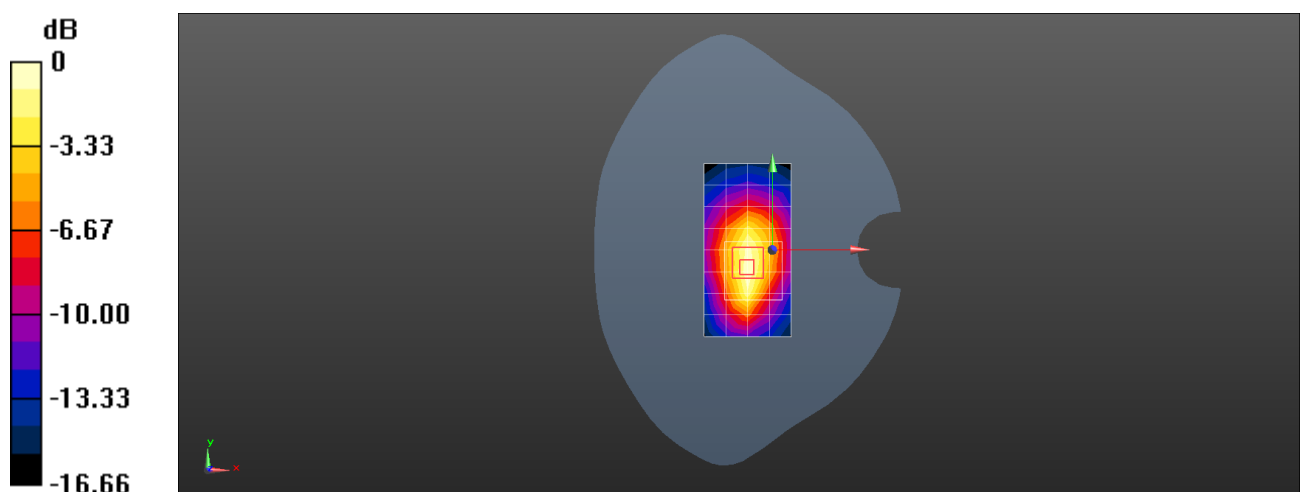
**Configuration/Body/Zoom Scan (6x6x7)/Cube 0:** Measurement grid:  $dx=8$ mm,  $dy=8$ mm,  $dz=5$ mm

Reference Value = 21.89 V/m; Power Drift = -0.17 dB

Peak SAR (extrapolated) = 0.821 W/kg

**SAR(1 g) = 0.489 W/kg; SAR(10 g) = 0.280 W/kg**

Maximum value of SAR (measured) = 0.704 W/kg



0 dB = 0.697 W/kg = -1.57 dBW/kg

Test Laboratory: HUAWEI SAR/HAC Lab

## ELE-L04 LTE Band 4 20M QPSK 50%RB 0 Offset 20050CH Left Tilt-Second Antenna

**DUT: ELE-L04; Type: Smart Phone; Serial: SAR4**

Communication System: UID 0, LTE-FDD (SC-FDMA, 20MHz, QPSK/16-QAM) (0); Frequency: 1720 MHz; Duty Cycle: 1:1

Medium parameters used:  $f = 1720$  MHz;  $\sigma = 1.367$  S/m;  $\epsilon_r = 38.892$ ;  $\rho = 1000$  kg/m<sup>3</sup>

Phantom section: Left Section

DASY Configuration:

- ε Probe: EX3DV4 - SN7381; ConvF(8.79, 8.79, 8.79) @ 1720 MHz; Calibrated: 2018-9-28
- ε Sensor-Surface: 1.4mm (Mechanical Surface Detection),  $z = 1.0, 31.0$
- ε Electronics: DAE4 Sn1236; Calibrated: 2018-7-18
- ε Phantom: SAM7; Type: SAM; Serial: 1594
- ε DASY52 52.10.1(1476); SEMCAD X 14.6.11(7439)

**Configuration/Head/Area Scan (8x13x1):** Measurement grid:  $dx=15$ mm,  $dy=15$ mm

Maximum value of SAR (measured) = 0.307 W/kg

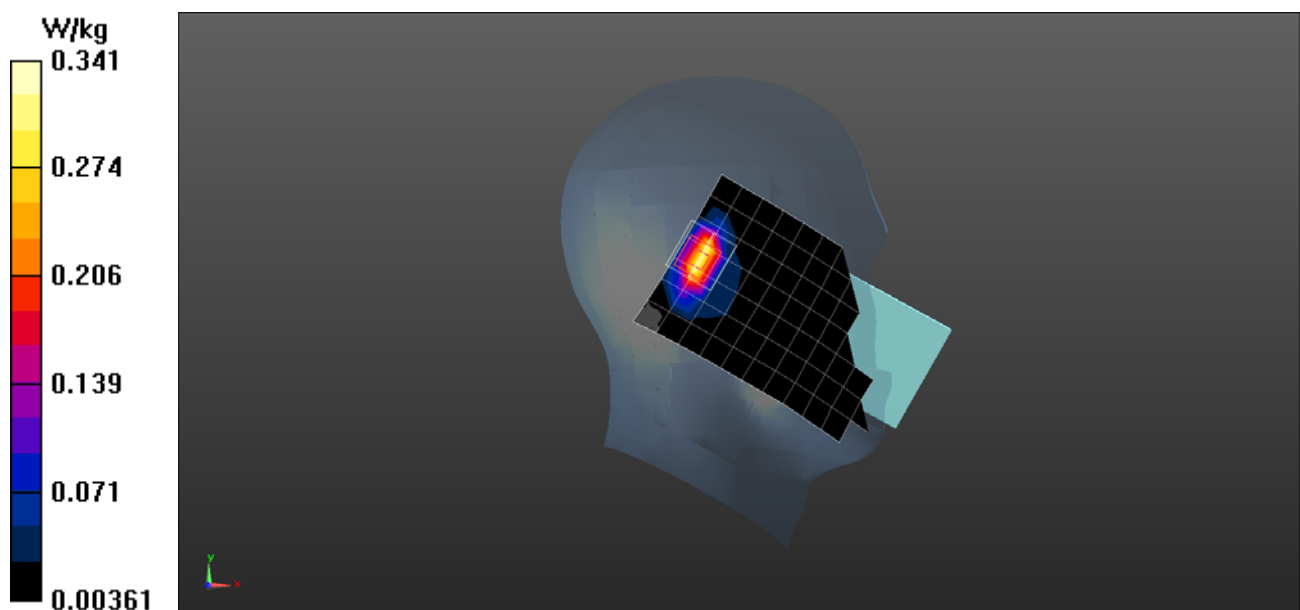
**Configuration/Head/Zoom Scan (5x5x5)/Cube 0:** Measurement grid:  $dx=8$ mm,  $dy=8$ mm,  $dz=5$ mm

Reference Value = 7.718 V/m; Power Drift = 0.07 dB

Peak SAR (extrapolated) = 0.413 W/kg

**SAR(1 g) = 0.222 W/kg; SAR(10 g) = 0.109 W/kg**

Maximum value of SAR (measured) = 0.341 W/kg



Test Laboratory: HUAWEI SAR/HAC Lab

## ELE-L04 LTE Band 4 20M QPSK 1RB 50 Offset 20050CH Left Cheek-Main Antenna

**DUT: ELE-L04; Type: Smart Phone; Serial: SAR4**

Communication System: UID 0, LTE-FDD (SC-FDMA, 20MHz, QPSK/16-QAM) (0); Frequency: 1720 MHz; Duty Cycle: 1:1

Medium parameters used:  $f = 1720$  MHz;  $\sigma = 1.375$  S/m;  $\epsilon_r = 38.561$ ;  $\rho = 1000$  kg/m<sup>3</sup>

Phantom section: Left Section

DASY Configuration:

- ε Probe: EX3DV4 - SN7381; ConvF(8.79, 8.79, 8.79) @ 1720 MHz; Calibrated: 2018-9-28
- ε Sensor-Surface: 1.4mm (Mechanical Surface Detection),  $z = 1.0, 31.0$
- ε Electronics: DAE4 Sn1236; Calibrated: 2018-7-18
- ε Phantom: SAM7; Type: SAM; Serial: 1594
- ε DASY52 52.10.1(1476); SEMCAD X 14.6.11(7439)

**Configuration/Head/Area Scan (8x13x1):** Measurement grid:  $dx=15$ mm,  $dy=15$ mm

Maximum value of SAR (measured) = 0.282 W/kg

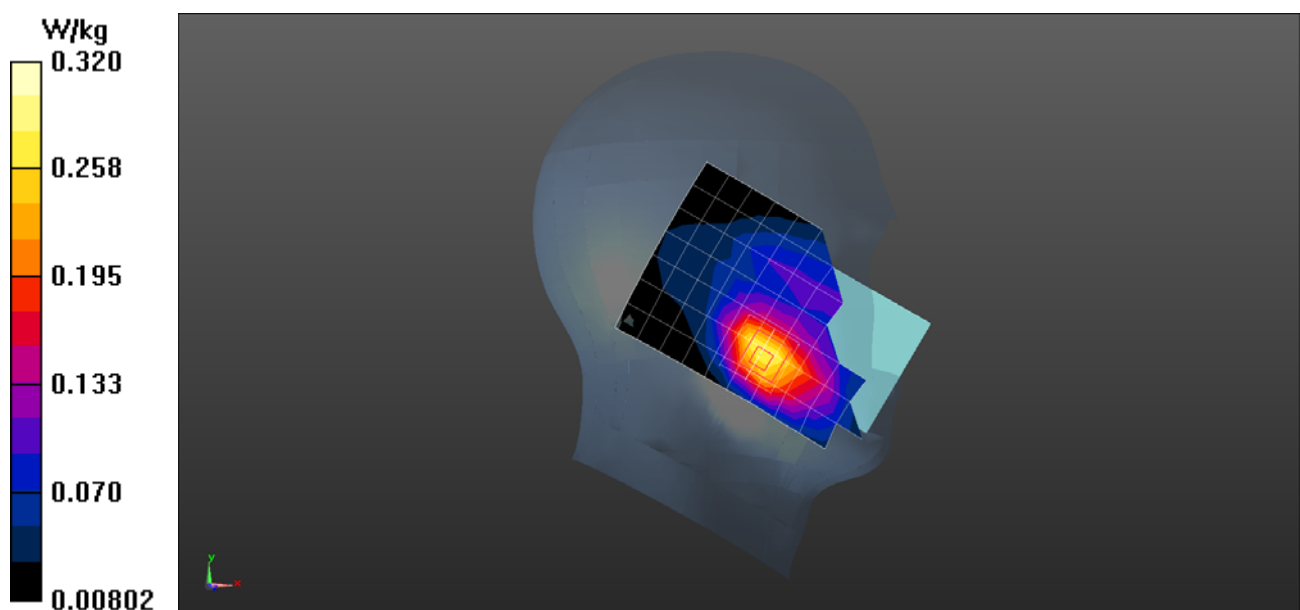
**Configuration/Head/Zoom Scan (5x5x7)/Cube 0:** Measurement grid:  $dx=8$ mm,  $dy=8$ mm,  $dz=5$ mm

Reference Value = 6.426 V/m; Power Drift = -0.03 dB

Peak SAR (extrapolated) = 0.363 W/kg

**SAR(1 g) = 0.244 W/kg; SAR(10 g) = 0.156 W/kg**

Maximum value of SAR (measured) = 0.320 W/kg



Test Laboratory: HUAWEI SAR/HAC Lab

## ELE-L04 LTE Band 4 20M QPSK 50%RB 0 Offset 20050CH Back Side 15mm-Second Antenna

**DUT: ELE-L04; Type: Smart Phone; Serial: SAR4**

Communication System: UID 0, LTE-FDD (SC-FDMA, 20MHz, QPSK/16-QAM) (0); Frequency: 1720 MHz; Duty Cycle: 1:1

Medium parameters used:  $f = 1720$  MHz;  $\sigma = 1.448$  S/m;  $\epsilon_r = 52.913$ ;  $\rho = 1000$  kg/m<sup>3</sup>

Phantom section: Center Section

DASY Configuration:

- Probe: EX3DV4 - SN7381; ConvF(8.61, 8.61, 8.61) @ 1720 MHz; Calibrated: 2018-9-28
- Sensor-Surface: 1.4mm (Mechanical Surface Detection),  $z = 1.0, 31.0$
- Electronics: DAE4 Sn1236; Calibrated: 2018-7-18
- Phantom: Triple Flat Phantom 5.1C; Type: MFP V5.1 C; Serial: 1176/2
- DASY52 52.10.1(1476); SEMCAD X 14.6.11(7439)

**Configuration/Body/Area Scan (14x9x1):** Measurement grid:  $dx=15$ mm,  $dy=15$ mm

Maximum value of SAR (measured) = 0.283 W/kg

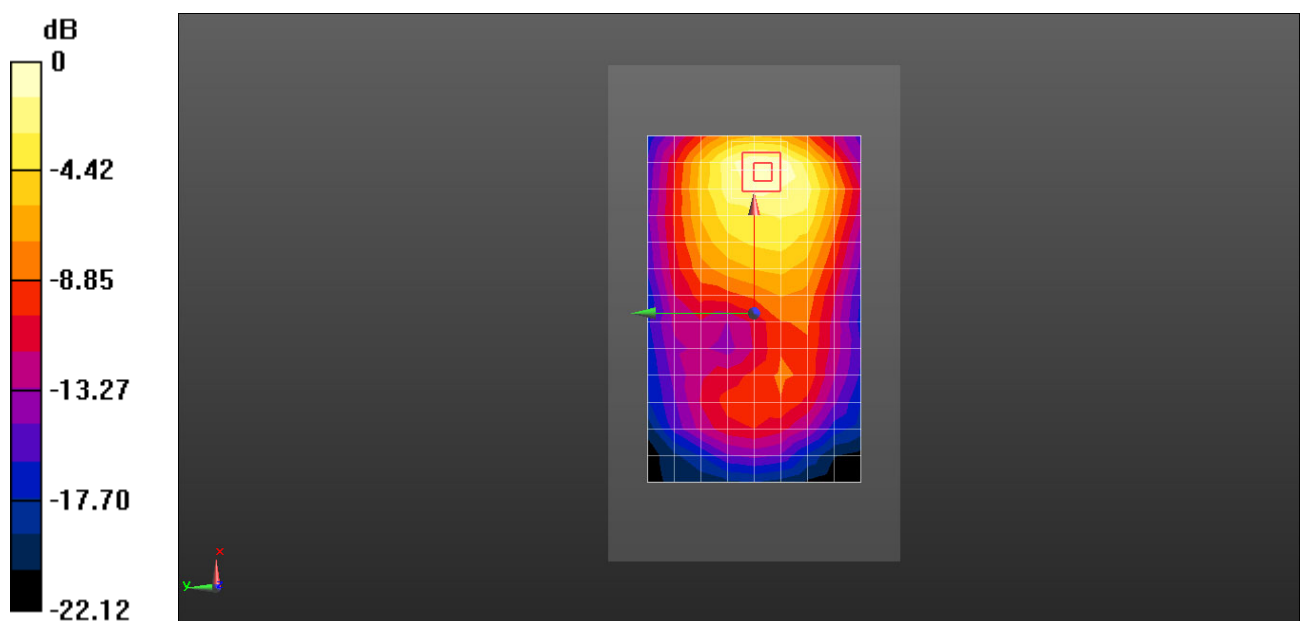
**Configuration/Body/Zoom Scan (5x5x7)/Cube 0:** Measurement grid:  $dx=8$ mm,  $dy=8$ mm,  $dz=5$ mm

Reference Value = 4.416 V/m; Power Drift = -0.14 dB

Peak SAR (extrapolated) = 0.376 W/kg

**SAR(1 g) = 0.240 W/kg; SAR(10 g) = 0.143 W/kg**

Maximum value of SAR (measured) = 0.330 W/kg



0 dB = 0.283 W/kg = -5.48 dBW/kg

Test Laboratory: HUAWEI SAR/HAC Lab

## ELE-L04 LTE Band 4 20M QPSK 1RB 99 Offset 20300CH Back Side 15mm with Battery2-Main Antenna

**DUT: ELE-L04; Type: Smart Phone; Serial: SAR4**

Communication System: UID 0, LTE-FDD (SC-FDMA, 20MHz, QPSK/16-QAM) (0); Frequency: 1745 MHz; Duty Cycle: 1:1

Medium parameters used (interpolated):  $f = 1745$  MHz;  $\sigma = 1.462$  S/m;  $\epsilon_r = 52.898$ ;  $\rho = 1000$  kg/m<sup>3</sup>

Phantom section: Center Section

DASY Configuration:

- Probe: EX3DV4 - SN7381; ConvF(8.61, 8.61, 8.61) @ 1745 MHz; Calibrated: 2018-9-28
- Sensor-Surface: 1.4mm (Mechanical Surface Detection),  $z = 1.0, 31.0$
- Electronics: DAE4 Sn1236; Calibrated: 2018-7-18
- Phantom: Triple Flat Phantom 5.1C; Type: MFP V5.1 C; Serial: 1176/2
- DASY52 52.10.1(1476); SEMCAD X 14.6.11(7439)

**Configuration/Body/Area Scan (13x9x1):** Measurement grid:  $dx=15$ mm,  $dy=15$ mm

[Info: Interpolated medium parameters used for SAR evaluation.](#)

Maximum value of SAR (measured) = 0.517 W/kg

**Configuration/Body/Zoom Scan (5x5x7)/Cube 0:** Measurement grid:  $dx=8$ mm,  $dy=8$ mm,  $dz=5$ mm

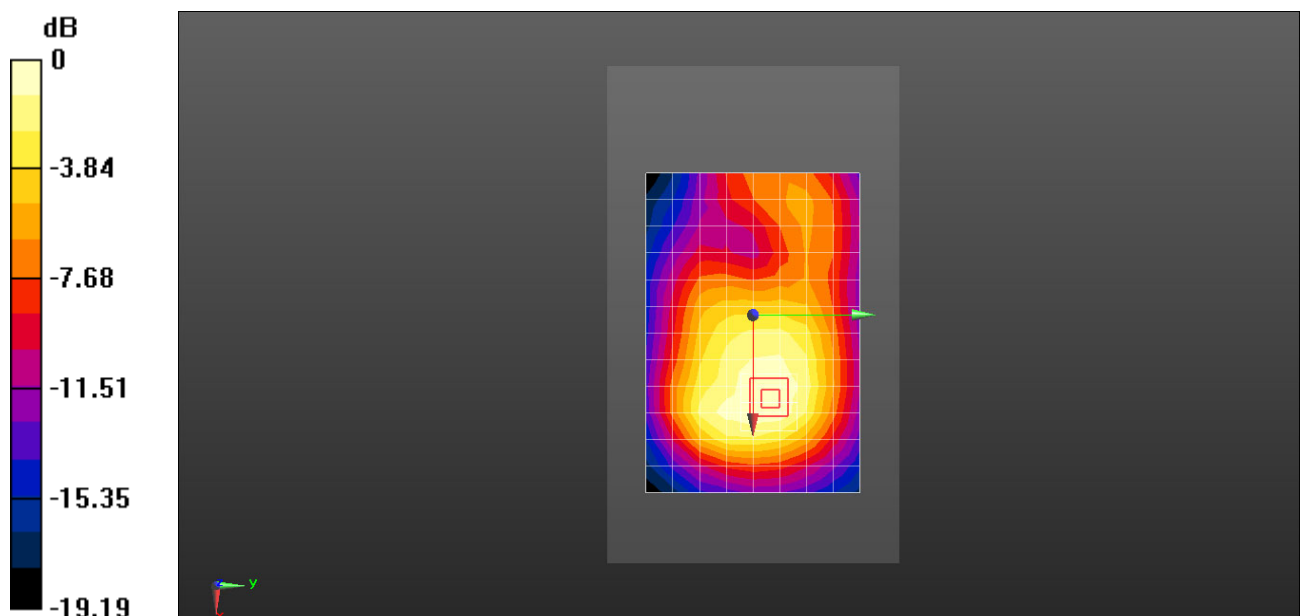
Reference Value = 12.80 V/m; Power Drift = -0.09 dB

Peak SAR (extrapolated) = 0.634 W/kg

**SAR(1 g) = 0.419 W/kg; SAR(10 g) = 0.274 W/kg**

[Info: Interpolated medium parameters used for SAR evaluation.](#)

Maximum value of SAR (measured) = 0.558 W/kg



0 dB = 0.517 W/kg = -2.87 dBW/kg

Test Laboratory: HUAWEI SAR/HAC Lab

## ELE-L04 LTE Band 4 20M QPSK 50%RB 0 Offset 20300CH Top Side 10mm-Second Antenna

**DUT: ELE-L04; Type: Smart Phone; Serial: SAR4**

Communication System: UID 0, LTE-FDD (SC-FDMA, 20MHz, QPSK/16-QAM) (0); Frequency: 1745 MHz; Duty Cycle: 1:1

Medium parameters used (interpolated):  $f = 1745$  MHz;  $\sigma = 1.458$  S/m;  $\epsilon_r = 52.087$ ;  $\rho = 1000$  kg/m<sup>3</sup>

Phantom section: Center Section

DASY Configuration:

- Probe: EX3DV4 - SN7381; ConvF(8.61, 8.61, 8.61) @ 1745 MHz; Calibrated: 2018-9-28
- Sensor-Surface: 1.4mm (Mechanical Surface Detection),  $z = 1.0, 31.0$
- Electronics: DAE4 Sn1236; Calibrated: 2018-7-18
- Phantom: Triple Flat Phantom 5.1C; Type: MFP V5.1 C; Serial: 1176/2
- DASY52 52.10.1(1476); SEMCAD X 14.6.11(7439)

**Configuration/Body/Area Scan (7x6x1):** Measurement grid:  $dx=15$ mm,  $dy=15$ mm

[Info: Interpolated medium parameters used for SAR evaluation.](#)

Maximum value of SAR (measured) = 0.298 W/kg

**Configuration/Body/Zoom Scan (5x5x7)/Cube 0:** Measurement grid:  $dx=8$ mm,  $dy=8$ mm,  $dz=5$ mm

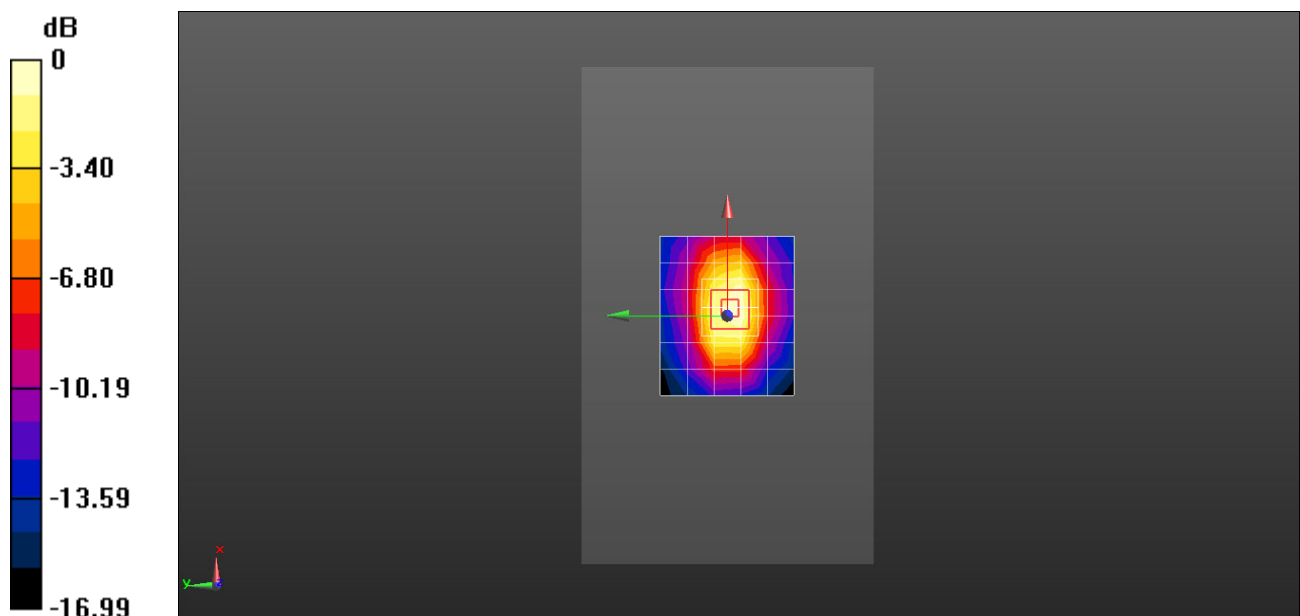
Reference Value = 16.69 V/m; Power Drift = 0.06 dB

Peak SAR (extrapolated) = 0.465 W/kg

**SAR(1 g) = 0.280 W/kg; SAR(10 g) = 0.155 W/kg**

[Info: Interpolated medium parameters used for SAR evaluation.](#)

Maximum value of SAR (measured) = 0.404 W/kg



0 dB = 0.298 W/kg = -5.26 dBW/kg

Test Laboratory: HUAWEI SAR/HAC Lab

## ELE-L04 LTE Band 4 20M QPSK 50%RB 0 Offset 20300CH Back Side 10mm-Main Antenna

**DUT: ELE-L04; Type: Smart Phone; Serial: SAR4**

Communication System: UID 0, LTE-FDD (SC-FDMA, 20MHz, QPSK/16-QAM) (0); Frequency: 1745 MHz; Duty Cycle: 1:1

Medium parameters used (interpolated):  $f = 1745$  MHz;  $\sigma = 1.462$  S/m;  $\epsilon_r = 52.898$ ;  $\rho = 1000$  kg/m<sup>3</sup>

Phantom section: Center Section

DASY Configuration:

- Probe: EX3DV4 - SN7381; ConvF(8.61, 8.61, 8.61) @ 1745 MHz; Calibrated: 2018-9-28
- Sensor-Surface: 1.4mm (Mechanical Surface Detection),  $z = 1.0, 31.0$
- Electronics: DAE4 Sn1236; Calibrated: 2018-7-18
- Phantom: Triple Flat Phantom 5.1C; Type: MFP V5.1 C; Serial: 1176/2
- DASY52 52.10.1(1476); SEMCAD X 14.6.11(7439)

**Configuration/Body/Area Scan (13x9x1):** Measurement grid:  $dx=15$ mm,  $dy=15$ mm

[Info: Interpolated medium parameters used for SAR evaluation.](#)

Maximum value of SAR (measured) = 0.472 W/kg

**Configuration/Body/Zoom Scan (6x6x7)/Cube 0:** Measurement grid:  $dx=8$ mm,  $dy=8$ mm,  $dz=5$ mm

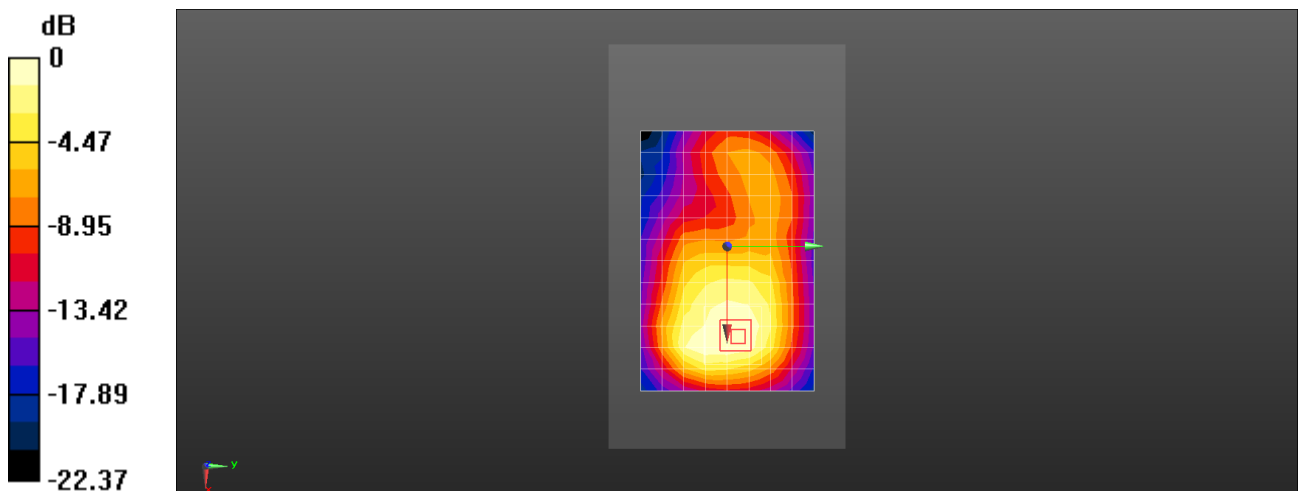
Reference Value = 8.446 V/m; Power Drift = -0.13 dB

Peak SAR (extrapolated) = 0.572 W/kg

**SAR(1 g) = 0.375 W/kg; SAR(10 g) = 0.244 W/kg**

[Info: Interpolated medium parameters used for SAR evaluation.](#)

Maximum value of SAR (measured) = 0.495 W/kg



0 dB = 0.472 W/kg = -3.26 dBW/kg



Test Laboratory: HUAWEI SAR/HAC Lab

## ELE-L04 LTE Band 5 10M QPSK 1RB 49 Offset 20525CH Right Cheek-Second Antenna

**DUT: ELE-L04; Type: Smart Phone; Serial: SAR5**

Communication System: UID 0, LTE-FDD (SC-FDMA, 10MHz, QPSK/16-QAM) (0); Frequency: 836.5 MHz; Duty Cycle: 1:1

Medium parameters used (interpolated):  $f = 836.5$  MHz;  $\sigma = 0.934$  S/m;  $\epsilon_r = 41.067$ ;  $\rho = 1000$  kg/m<sup>3</sup>

Phantom section: Right Section

DASY Configuration:

- Probe: EX3DV4 - SN7489; ConvF(10.39, 10.39, 10.39) @ 836.5 MHz; Calibrated: 2018-1-9
- Sensor-Surface: 1.4mm (Mechanical Surface Detection),  $z = 1.0, 31.0$
- Electronics: DAE4 Sn1531; Calibrated: 2018-1-3
- Phantom: SAM8; Type: SAM; Serial: 1940
- DASY52 52.10.1(1476); SEMCAD X 14.6.11(7439)

**Configuration/Head/Area Scan (9x14x1):** Measurement grid:  $dx=15$ mm,  $dy=15$ mm

Maximum value of SAR (measured) = 0.530 W/kg

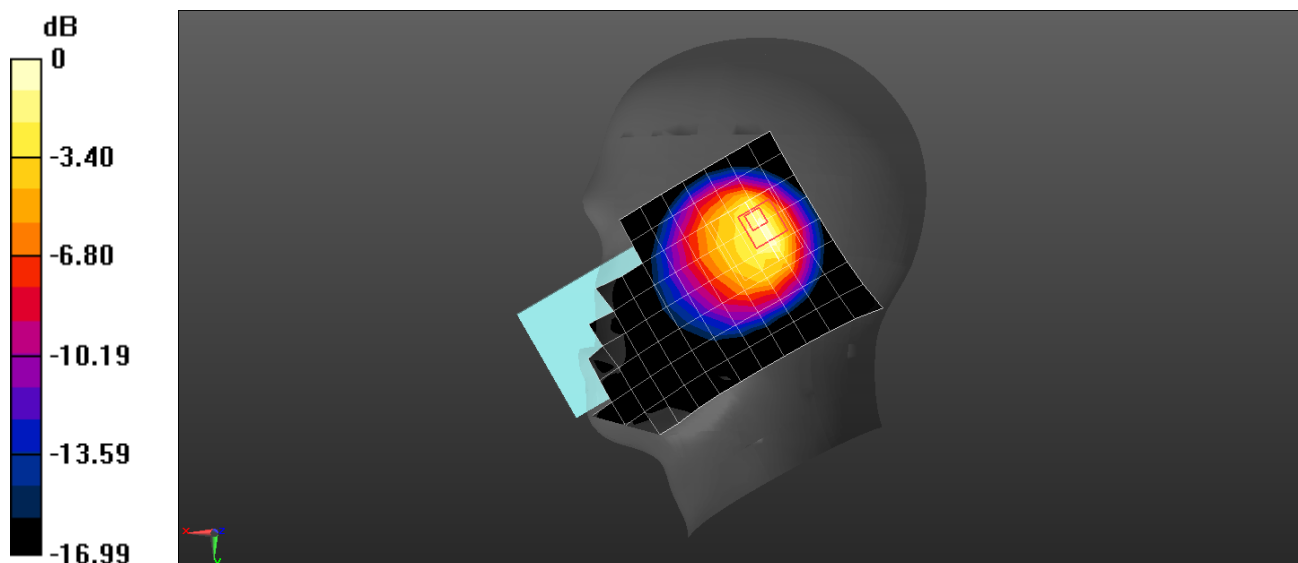
**Configuration/Head/Zoom Scan (6x6x7)/Cube 0:** Measurement grid:  $dx=8$ mm,  $dy=8$ mm,  $dz=5$ mm

Reference Value = 23.72 V/m; Power Drift = -0.06 dB

Peak SAR (extrapolated) = 0.804 W/kg

**SAR(1 g) = 0.348 W/kg; SAR(10 g) = 0.177 W/kg**

Maximum value of SAR (measured) = 0.611 W/kg



0 dB = 0.611 W/kg = -2.14 dBW/kg

Test Laboratory: HUAWEI SAR/HAC Lab

## ELE-L04 LTE Band 5 10M QPSK 1RB 0 Offset 20525CH Right Cheek with Battery2- Main Antenna

**DUT: ELE-L04; Type: Smart Phone; Serial: SAR5**

Communication System: UID 0, LTE-FDD (SC-FDMA, 10MHz, QPSK/16-QAM) (0); Frequency: 836.5 MHz; Duty Cycle: 1:1

Medium parameters used (interpolated):  $f = 836.5$  MHz;  $\sigma = 0.934$  S/m;  $\epsilon_r = 41.067$ ;  $\rho = 1000$  kg/m<sup>3</sup>

Phantom section: Right Section

DASY Configuration:

- Probe: EX3DV4 - SN7489; ConvF(10.39, 10.39, 10.39) @ 836.5 MHz; Calibrated: 2018-1-9
- Sensor-Surface: 1.4mm (Mechanical Surface Detection),  $z = 1.0, 31.0$
- Electronics: DAE4 Sn1531; Calibrated: 2018-1-3
- Phantom: SAM8; Type: SAM; Serial: 1940
- DASY52 52.10.1(1476); SEMCAD X 14.6.11(7439)

**Configuration/Head/Area Scan (9x14x1):** Measurement grid:  $dx=15$ mm,  $dy=15$ mm

[Info: Interpolated medium parameters used for SAR evaluation.](#)

Maximum value of SAR (measured) = 0.130 W/kg

**Configuration/Head/Zoom Scan (10x7x7)/Cube 0:** Measurement grid:  $dx=8$ mm,  $dy=8$ mm,  $dz=5$ mm

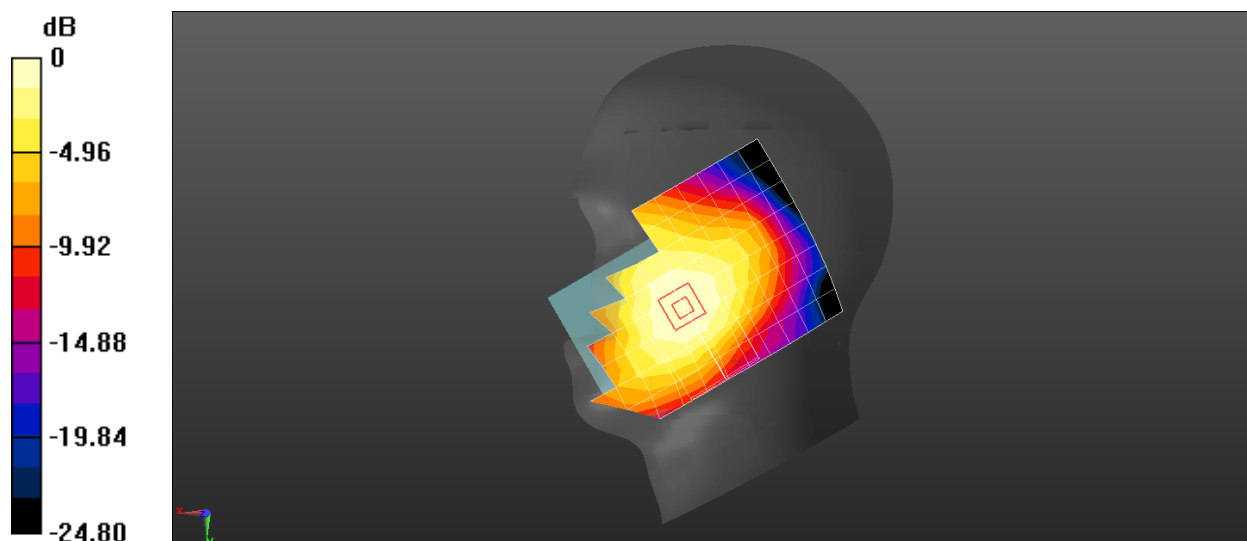
Reference Value = 11.41 V/m; Power Drift = 0.02 dB

Peak SAR (extrapolated) = 0.138 W/kg

**SAR(1 g) = 0.117 W/kg; SAR(10 g) = 0.093 W/kg**

[Info: Interpolated medium parameters used for SAR evaluation.](#)

Maximum value of SAR (measured) = 0.132 W/kg



0 dB = 0.132 W/kg = -8.79 dBW/kg