

Test Laboratory: HUAWEI SAR/HAC Lab

ELE-L04 CA_7C P_1@99 21100CH S_1@0 21298CH Back Side 15mm with Battery2-Main Antenna

DUT: ELE-L04; Type: Smart Phone; Serial: SAR1

Communication System: UID 0, LTE-FDD (SC-FDMA, 20MHz, QPSK/16-QAM) (0); Frequency: 2535 MHz; Duty Cycle: 1:1

Medium parameters used: $f = 2535$ MHz; $\sigma = 2.119$ S/m; $\epsilon_r = 50.574$; $\rho = 1000$ kg/m³

Phantom section: Flat Section

DASY Configuration:

- Probe: EX3DV4 - SN3744; ConvF(7.35, 7.35, 7.35) @ 2535 MHz; Calibrated: 2018-7-25
- Sensor-Surface: 1.4mm (Mechanical Surface Detection), $z = 1.0, 31.0$
- Electronics: DAE3 Sn393; Calibrated: 2018-8-14
- Phantom: SAM2; Type: SAM; Serial: 1474
- DASY52 52.10.1(1476); SEMCAD X 14.6.11(7439)

Configuration/Body/Area Scan (10x16x1): Measurement grid: $dx=12$ mm, $dy=12$ mm

Maximum value of SAR (measured) = 0.392 W/kg

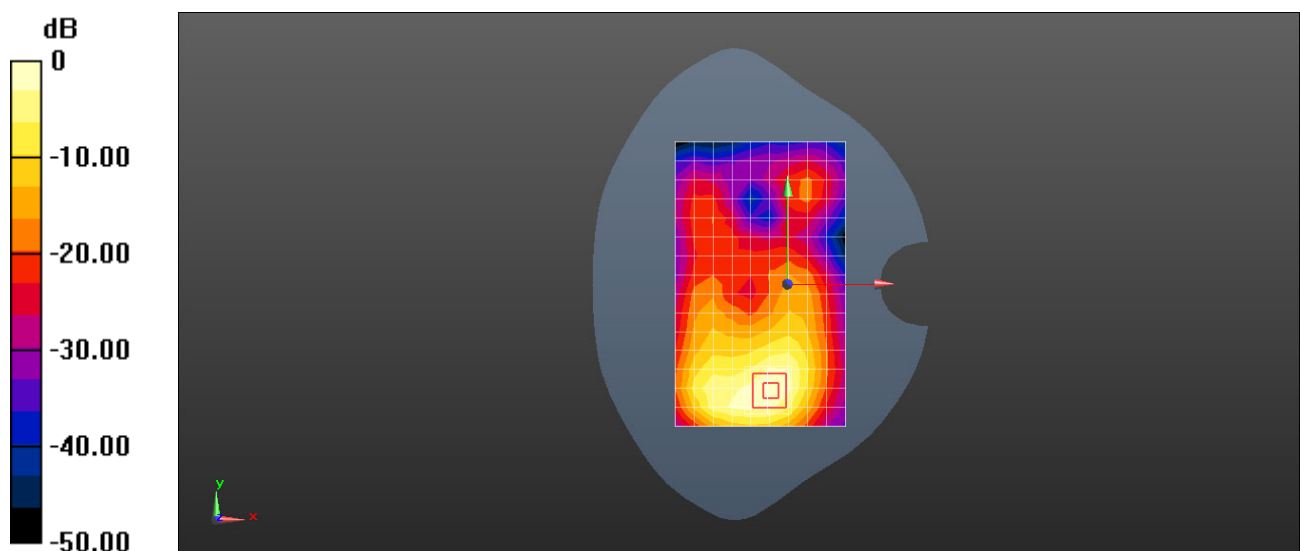
Configuration/Body/Zoom Scan (10x8x7)/Cube 0: Measurement grid: $dx=5$ mm, $dy=5$ mm, $dz=5$ mm

Reference Value = 14.53 V/m; Power Drift = -0.07 dB

Peak SAR (extrapolated) = 0.944 W/kg

SAR(1 g) = 0.261 W/kg; SAR(10 g) = 0.122 W/kg

Maximum value of SAR (measured) = 0.485 W/kg



0 dB = 0.392 W/kg = -4.07 dBW/kg

Test Laboratory: HUAWEI SAR/HAC Lab

ELE-L04 LTE Band 7 20M QPSK 50%RB 50 Offset 21350CH Top Side 10mm-Second Antenna

DUT: ELE-L04; Type: Smart Phone; Serial: SAR1

Communication System: UID 0, LTE-FDD (SC-FDMA, 20MHz, QPSK/16-QAM) (0); Frequency: 2560 MHz; Duty Cycle: 1:1

Medium parameters used: $f = 2560$ MHz; $\sigma = 2.142$ S/m; $\epsilon_r = 50.532$; $\rho = 1000$ kg/m³

Phantom section: Flat Section

DASY Configuration:

- Probe: EX3DV4 - SN3744; ConvF(7.35, 7.35, 7.35) @ 2560 MHz; Calibrated: 2018-7-25
- Sensor-Surface: 1.4mm (Mechanical Surface Detection), $z = 1.0, 31.0$
- Electronics: DAE3 Sn393; Calibrated: 2018-8-14
- Phantom: SAM2; Type: SAM; Serial: 1474
- DASY52 52.10.1(1476); SEMCAD X 14.6.11(7439)

Configuration/Body/Area Scan (6x11x1): Measurement grid: $dx=12$ mm, $dy=12$ mm
Maximum value of SAR (measured) = 0.790 W/kg

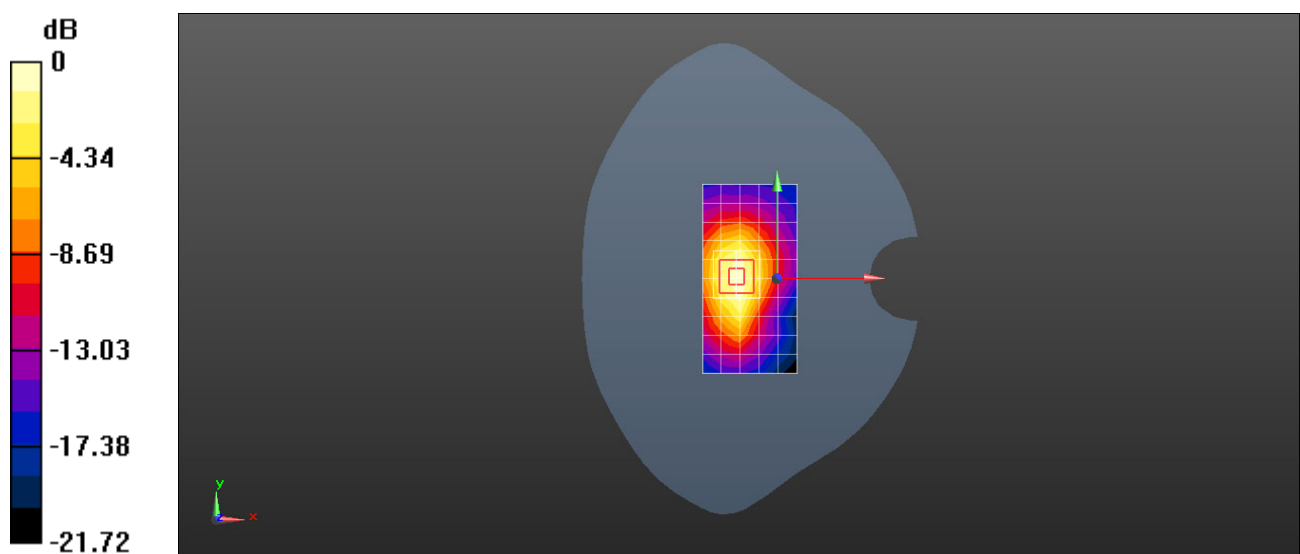
Configuration/Body/Zoom Scan (7x7x7)/Cube 0: Measurement grid: $dx=5$ mm, $dy=5$ mm, $dz=5$ mm

Reference Value = 2.642 V/m; Power Drift = -0.08 dB

Peak SAR (extrapolated) = 1.02 W/kg

SAR(1 g) = 0.510 W/kg; SAR(10 g) = 0.259 W/kg

Maximum value of SAR (measured) = 0.816 W/kg



0 dB = 0.790 W/kg = -1.02 dBW/kg

Test Laboratory: HUAWEI SAR/HAC Lab

ELE-L04 CA_7C P_1@0 21350CH S_1@99 21152CH Bottom Side 10mm-Main Antenna

DUT: ELE-L04; Type: Smart Phone; Serial: SAR1

Communication System: UID 0, LTE-FDD (SC-FDMA, 20MHz, QPSK/16-QAM) (0); Frequency: 2560 MHz; Duty Cycle: 1:1

Medium parameters used: $f = 2560$ MHz; $\sigma = 2.142$ S/m; $\epsilon_r = 50.532$; $\rho = 1000$ kg/m³

Phantom section: Flat Section

DASY Configuration:

- Probe: EX3DV4 - SN3744; ConvF(7.35, 7.35, 7.35) @ 2560 MHz; Calibrated: 2018-7-25
- Sensor-Surface: 1.4mm (Mechanical Surface Detection), $z = 1.0, 31.0$
- Electronics: DAE3 Sn393; Calibrated: 2018-8-14
- Phantom: SAM2; Type: SAM; Serial: 1474
- DASY52 52.10.1(1476); SEMCAD X 14.6.11(7439)

Configuration/Body/Area Scan (5x11x1): Measurement grid: $dx=12$ mm, $dy=12$ mm

Maximum value of SAR (measured) = 0.758 W/kg

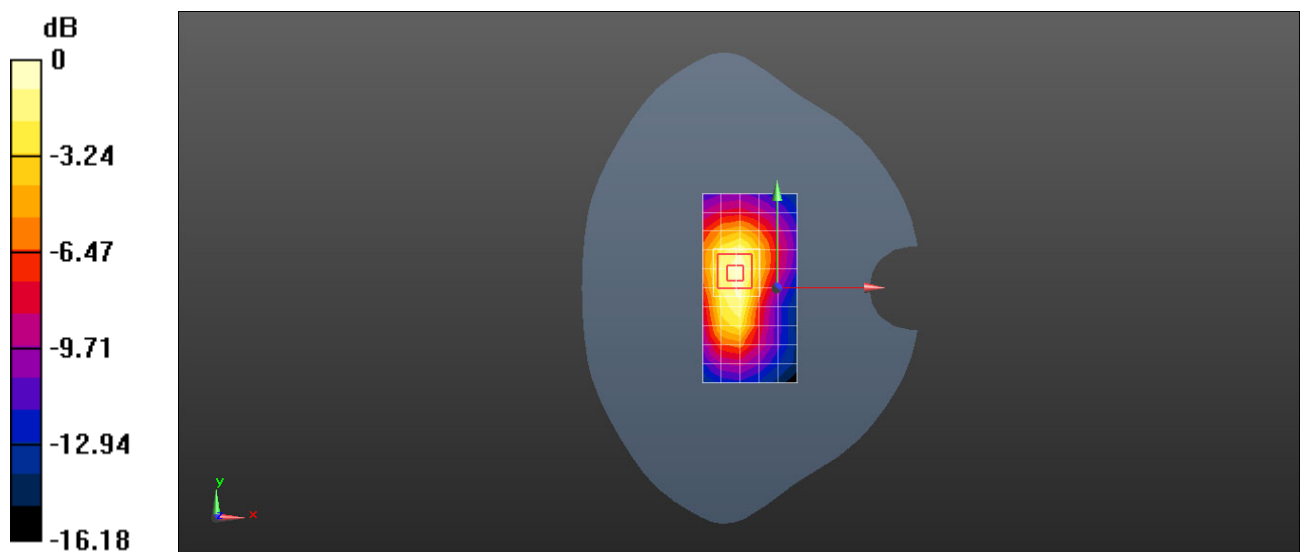
Configuration/Body/Zoom Scan (10x8x7)/Cube 0: Measurement grid: $dx=5$ mm, $dy=5$ mm, $dz=5$ mm

Reference Value = 2.154 V/m; Power Drift = 0.12 dB

Peak SAR (extrapolated) = 1.02 W/kg

SAR(1 g) = 0.504 W/kg; SAR(10 g) = 0.250 W/kg

Maximum value of SAR (measured) = 0.815 W/kg



0 dB = 0.758 W/kg = -1.20 dBW/kg

Test Laboratory: HUAWEI SAR/HAC Lab

ELE-L04 LTE Band 12 10M QPSK 1RB 49 Offset 23130CH Right Tilt-Second Antenna

DUT: ELE-L04; Type: Smart Phone; Serial: SAR6

Communication System: UID 0, LTE-FDD (SC-FDMA, 10MHz, QPSK/16-QAM) (0); Frequency: 711 MHz; Duty Cycle: 1:1

Medium parameters used: $f = 711 \text{ MHz}$; $\sigma = 0.89 \text{ S/m}$; $\epsilon_r = 42.421$; $\rho = 1000 \text{ kg/m}^3$

Phantom section: Right Section

DASY Configuration:

- Probe: EX3DV4 - SN3736; ConvF(9.1, 9.1, 9.1) @ 711 MHz; Calibrated: 2018-4-27
- Sensor-Surface: 1.4mm (Mechanical Surface Detection), $z = 1.0, 31.0$
- Electronics: DAE4 Sn851; Calibrated: 2018-7-18
- Phantom: SAM9; Type: SAM; Serial: 1958
- DASY52 52.10.1(1476); SEMCAD X 14.6.11(7439)

Configuration/Head/Area Scan (9x13x1): Measurement grid: $dx=15\text{mm}$, $dy=15\text{mm}$

Maximum value of SAR (measured) = 0.611 W/kg

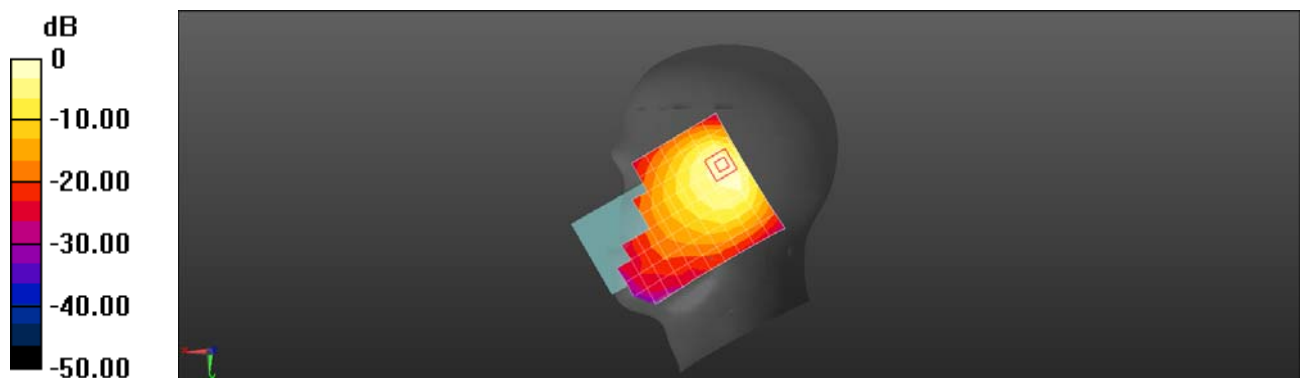
Configuration/Head/Zoom Scan (6x5x7)/Cube 0: Measurement grid: $dx=8\text{mm}$, $dy=8\text{mm}$, $dz=5\text{mm}$

Reference Value = 26.53 V/m; Power Drift = -0.03 dB

Peak SAR (extrapolated) = 1.60 W/kg

SAR(1 g) = 0.438 W/kg; SAR(10 g) = 0.174 W/kg

Maximum value of SAR (measured) = 1.05 W/kg



0 dB = 0.611 W/kg = -2.14 dBW/kg

Test Laboratory: HUAWEI SAR/HAC Lab

ELE-L04 LTE Band 12 10M QPSK 1RB 49 Offset 23130CH Left Cheek-Main Antenna

DUT: ELE-L04; Type: Smart Phone; Serial: SAR6

Communication System: UID 0, LTE-FDD (SC-FDMA, 10MHz, QPSK/16-QAM) (0); Frequency: 711 MHz; Duty Cycle: 1:1

Medium parameters used: $f = 711 \text{ MHz}$; $\sigma = 0.89 \text{ S/m}$; $\epsilon_r = 42.421$; $\rho = 1000 \text{ kg/m}^3$

Phantom section: Left Section

DASY Configuration:

- Probe: EX3DV4 - SN3736; ConvF(9.1, 9.1, 9.1) @ 711 MHz; Calibrated: 2018-4-27
- Sensor-Surface: 1.4mm (Mechanical Surface Detection), $z = 1.0, 31.0$
- Electronics: DAE4 Sn851; Calibrated: 2018-7-18
- Phantom: SAM9; Type: SAM; Serial: 1958
- DASY52 52.10.1(1476); SEMCAD X 14.6.11(7439)

Configuration/Head/Area Scan (9x13x1): Measurement grid: $dx=15\text{mm}$, $dy=15\text{mm}$

Maximum value of SAR (measured) = 0.173 W/kg

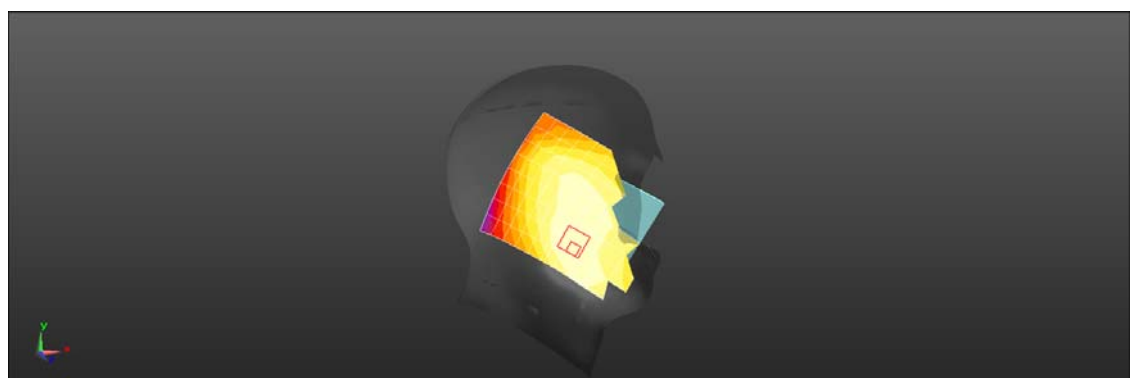
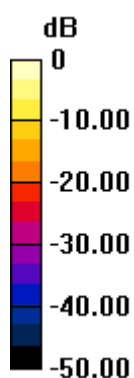
Configuration/Head/Zoom Scan (6x6x7)/Cube 0: Measurement grid: $dx=8\text{mm}$, $dy=8\text{mm}$, $dz=5\text{mm}$

Reference Value = 8.499 V/m ; Power Drift = -0.03 dB

Peak SAR (extrapolated) = 0.212 W/kg

SAR(1 g) = 0.132 W/kg ; SAR(10 g) = 0.086 W/kg

Maximum value of SAR (measured) = 0.180 W/kg



$0 \text{ dB} = 0.173 \text{ W/kg} = -7.63 \text{ dBW/kg}$

Test Laboratory: HUAWEI SAR/HAC Lab

ELE-L04 LTE Band 12 10M QPSK 1RB 49 Offset 23130CH Back Side 15mm-Second Antenna

DUT: ELE-L04; Type: Smart Phone; Serial: SAR1

Communication System: UID 0, LTE-FDD (SC-FDMA, 10MHz, QPSK/16-QAM) (0); Frequency: 711 MHz; Duty Cycle: 1:1

Medium parameters used: $f = 711$ MHz; $\sigma = 0.984$ S/m; $\epsilon_r = 53.606$; $\rho = 1000$ kg/m³

Phantom section: Flat Section

DASY Configuration:

- Probe: EX3DV4 - SN3744; ConvF(9.54, 9.54, 9.54) @ 711 MHz; Calibrated: 2018-7-25
- Sensor-Surface: 1.4mm (Mechanical Surface Detection), $z = 1.0, 31.0$
- Electronics: DAE3 Sn393; Calibrated: 2018-8-14
- Phantom: SAM2; Type: SAM; Serial: 1474
- DASY52 52.10.1(1476); SEMCAD X 14.6.11(7439)

Configuration/Body/Area Scan (9x14x1): Measurement grid: $dx=15$ mm, $dy=15$ mm
Maximum value of SAR (measured) = 0.109 W/kg

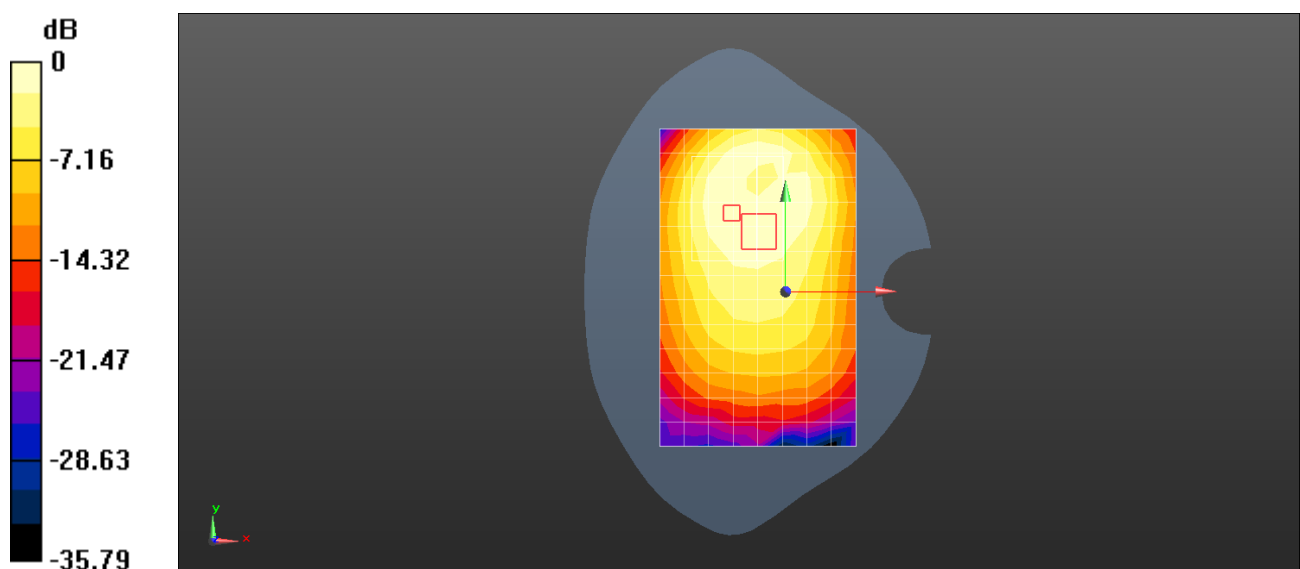
Configuration/Body/Zoom Scan (8x9x7)/Cube 0: Measurement grid: $dx=8$ mm, $dy=8$ mm, $dz=5$ mm

Reference Value = 7.535 V/m; Power Drift = -0.08 dB

Peak SAR (extrapolated) = 0.132 W/kg

SAR(1 g) = 0.079 W/kg; SAR(10 g) = 0.055 W/kg

Maximum value of SAR (measured) = 0.108 W/kg



0 dB = 0.109 W/kg = -9.63 dBW/kg

Test Laboratory: HUAWEI SAR/HAC Lab

ELE-L04 LTE Band 12 10M QPSK 1RB 49 Offset 23130CH Back Side 15mm-Main Antenna

DUT: ELE-L04; Type: Smart Phone; Serial: SAR1

Communication System: UID 0, LTE-FDD (SC-FDMA, 10MHz, QPSK/16-QAM) (0); Frequency: 711 MHz; Duty Cycle: 1:1

Medium parameters used: $f = 711$ MHz; $\sigma = 0.984$ S/m; $\epsilon_r = 53.606$; $\rho = 1000$ kg/m³

Phantom section: Flat Section

DASY Configuration:

- Probe: EX3DV4 - SN3744; ConvF(9.54, 9.54, 9.54) @ 711 MHz; Calibrated: 2018-7-25
- Sensor-Surface: 1.4mm (Mechanical Surface Detection), $z = 1.0, 31.0$
- Electronics: DAE3 Sn393; Calibrated: 2018-8-14
- Phantom: SAM2; Type: SAM; Serial: 1474
- DASY52 52.10.1(1476); SEMCAD X 14.6.11(7439)

Configuration/Body/Area Scan (9x14x1): Measurement grid: dx=15mm, dy=15mm

Maximum value of SAR (measured) = 0.352 W/kg

Configuration/Body/Zoom Scan (6x5x7)/Cube 0: Measurement grid: dx=8mm, dy=8mm, dz=5mm

Reference Value = 15.60 V/m; Power Drift = -0.10 dB

Peak SAR (extrapolated) = 0.426 W/kg

SAR(1 g) = 0.291 W/kg; SAR(10 g) = 0.204 W/kg

Maximum value of SAR (measured) = 0.371 W/kg

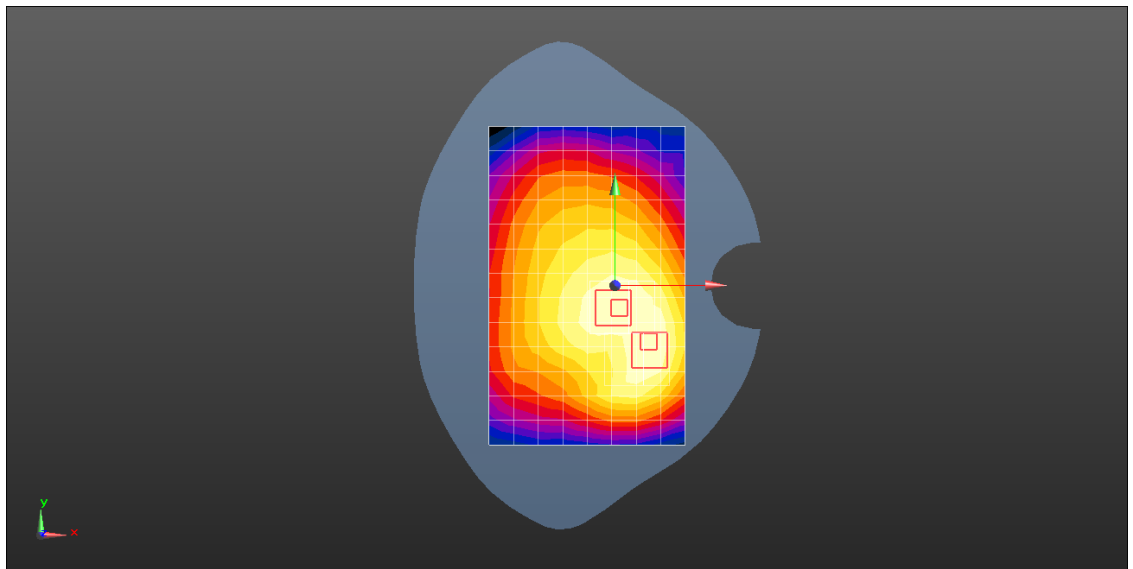
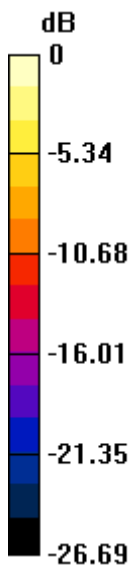
Configuration/Body/Zoom Scan (6x5x7)/Cube 1: Measurement grid: dx=8mm, dy=8mm, dz=5mm

Reference Value = 15.60 V/m; Power Drift = -0.10 dB

Peak SAR (extrapolated) = 0.465 W/kg

SAR(1 g) = 0.283 W/kg; SAR(10 g) = 0.173 W/kg

Maximum value of SAR (measured) = 0.391 W/kg



0 dB = 0.352 W/kg = -4.53 dBW/kg

Test Laboratory: HUAWEI SAR/HAC Lab

ELE-L04 LTE Band 12 10M QPSK 1RB 0 Offset 23130CH Back Side 10mm-Second Antenna

DUT: ELE-L04; Type: Smart Phone; Serial: SAR1

Communication System: UID 0, LTE-FDD (SC-FDMA, 10MHz, QPSK/16-QAM) (0); Frequency: 711 MHz; Duty Cycle: 1:1

Medium parameters used: $f = 711$ MHz; $\sigma = 0.984$ S/m; $\epsilon_r = 53.606$; $\rho = 1000$ kg/m³

Phantom section: Flat Section

DASY Configuration:

- Probe: EX3DV4 - SN3744; ConvF(9.54, 9.54, 9.54) @ 711 MHz; Calibrated: 2018-7-25
- Sensor-Surface: 1.4mm (Mechanical Surface Detection), $z = 1.0, 31.0$
- Electronics: DAE3 Sn393; Calibrated: 2018-8-14
- Phantom: SAM2; Type: SAM; Serial: 1474
- DASY52 52.10.1(1476); SEMCAD X 14.6.11(7439)

Configuration/Body/Area Scan (9x14x1): Measurement grid: dx=15mm, dy=15mm

Maximum value of SAR (measured) = 0.179 W/kg

Configuration/Body/Zoom Scan (6x6x7)/Cube 0: Measurement grid: dx=8mm, dy=8mm, dz=5mm

Reference Value = 6.778 V/m; Power Drift = -0.02 dB

Peak SAR (extrapolated) = 0.236 W/kg

SAR(1 g) = 0.125 W/kg; SAR(10 g) = 0.069 W/kg

Maximum value of SAR (measured) = 0.193 W/kg

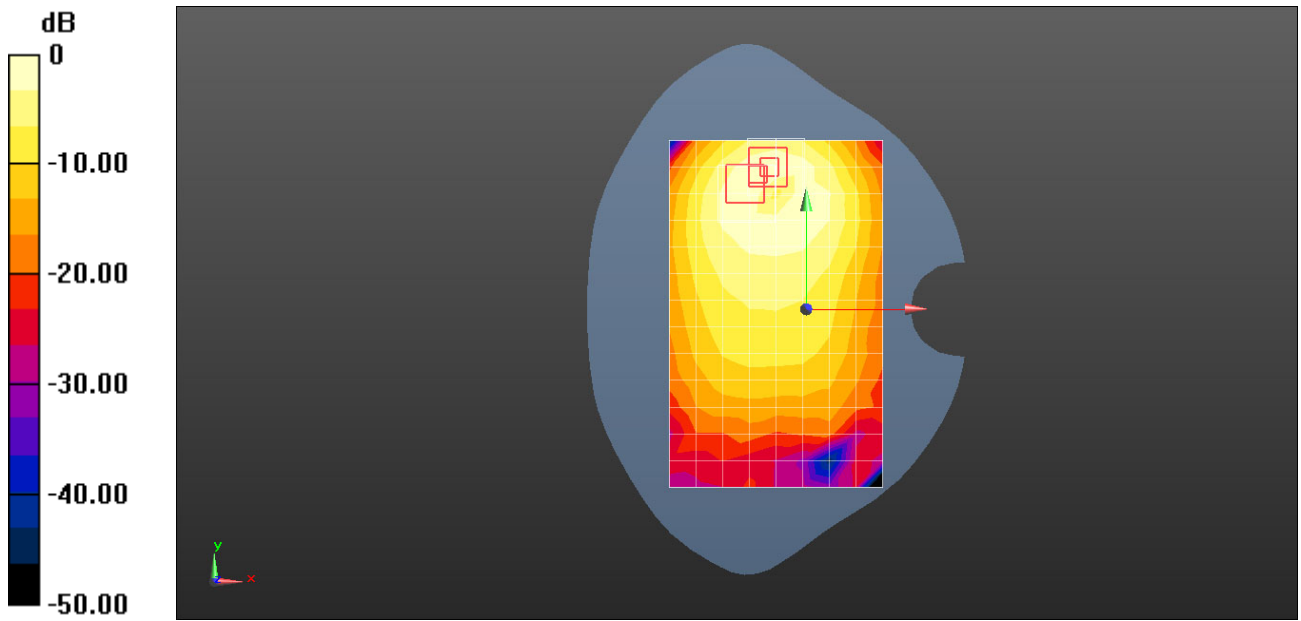
Configuration/Body/Zoom Scan (6x6x7)/Cube 1: Measurement grid: dx=8mm, dy=8mm, dz=5mm

Reference Value = 6.778 V/m; Power Drift = -0.02 dB

Peak SAR (extrapolated) = 0.238 W/kg

SAR(1 g) = 0.117 W/kg; SAR(10 g) = 0.063 W/kg

Maximum value of SAR (measured) = 0.187 W/kg



0 dB = 0.179 W/kg = -7.47 dBW/kg

Test Laboratory: HUAWEI SAR/HAC Lab

ELE-L04 LTE Band 12 10M QPSK 1RB 49 Offset 23130CH Left Side 10mm-Main Antenna

DUT: ELE-L04; Type: Smart Phone; Serial: SAR1

Communication System: UID 0, LTE-FDD (SC-FDMA, 10MHz, QPSK/16-QAM) (0); Frequency: 711 MHz; Duty Cycle: 1:1

Medium parameters used: $f = 711$ MHz; $\sigma = 0.984$ S/m; $\epsilon_r = 53.606$; $\rho = 1000$ kg/m³

Phantom section: Flat Section

DASY Configuration:

- Probe: EX3DV4 - SN3744; ConvF(9.54, 9.54, 9.54) @ 711 MHz; Calibrated: 2018-7-25
- Sensor-Surface: 1.4mm (Mechanical Surface Detection), $z = 1.0, 31.0$
- Electronics: DAE3 Sn393; Calibrated: 2018-8-14
- Phantom: SAM2; Type: SAM; Serial: 1474
- DASY52 52.10.1(1476); SEMCAD X 14.6.11(7439)

Configuration/Body/Area Scan (5x14x1): Measurement grid: $dx=15$ mm, $dy=15$ mm

Maximum value of SAR (measured) = 0.527 W/kg

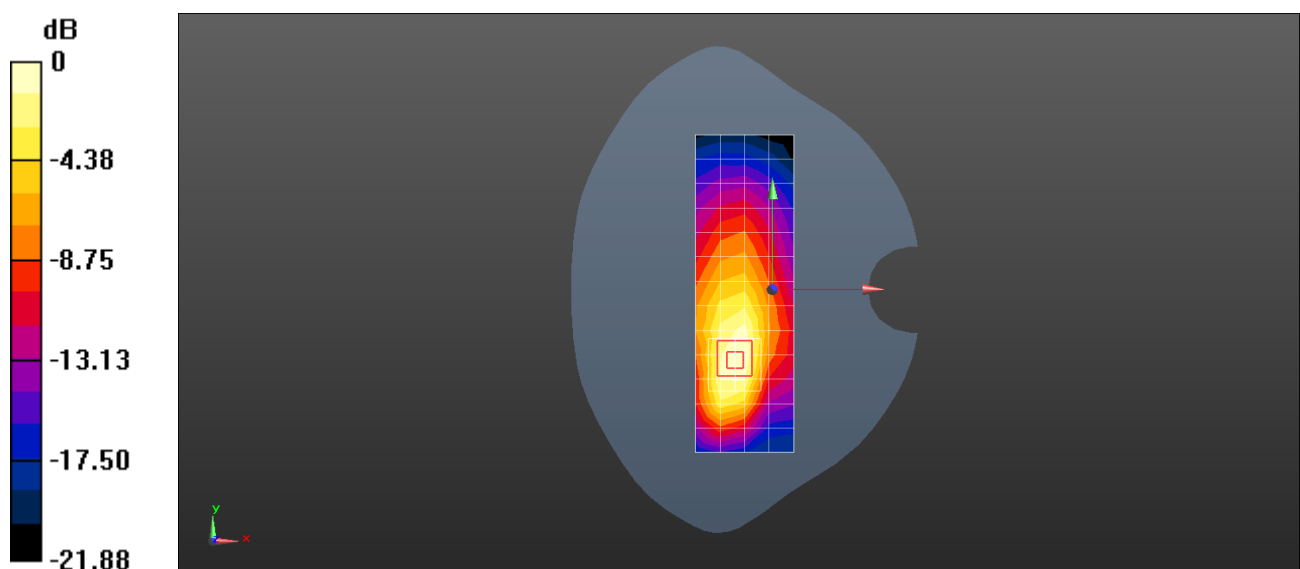
Configuration/Body/Zoom Scan (5x5x7)/Cube 0: Measurement grid: $dx=8$ mm, $dy=8$ mm, $dz=5$ mm

Reference Value = 14.34 V/m; Power Drift = 0.05 dB

Peak SAR (extrapolated) = 0.928 W/kg

SAR(1 g) = 0.456 W/kg; SAR(10 g) = 0.239 W/kg

Maximum value of SAR (measured) = 0.742 W/kg



0 dB = 0.527 W/kg = -2.78 dBW/kg

Test Laboratory: HUAWEI SAR/HAC Lab

ELE-L04 LTE Band 17 10M QPSK 50%RB 0 Offset 23780CH Right Tilt-Second Antenna

DUT: ELE-L04; Type: Smart Phone; Serial: SAR6

Communication System: UID 0, LTE-FDD (SC-FDMA, 10MHz, QPSK/16-QAM) (0); Frequency: 709 MHz; Duty Cycle: 1:1

Medium parameters used: $f = 709$ MHz; $\sigma = 0.895$ S/m; $\epsilon_r = 40.805$; $\rho = 1000$ kg/m³

Phantom section: Right Section

DASY Configuration:

- Probe: EX3DV4 - SN3736; ConvF(9.1, 9.1, 9.1) @ 709 MHz; Calibrated: 2018-4-27
- Sensor-Surface: 1.4mm (Mechanical Surface Detection), $z = 1.0, 31.0$
- Electronics: DAE4 Sn851; Calibrated: 2018-7-18
- Phantom: SAM9; Type: SAM; Serial: 1958
- DASY52 52.10.1(1476); SEMCAD X 14.6.11(7439)

Configuration/Head/Area Scan (8x13x1): Measurement grid: $dx=15$ mm, $dy=15$ mm

Maximum value of SAR (measured) = 0.525 W/kg

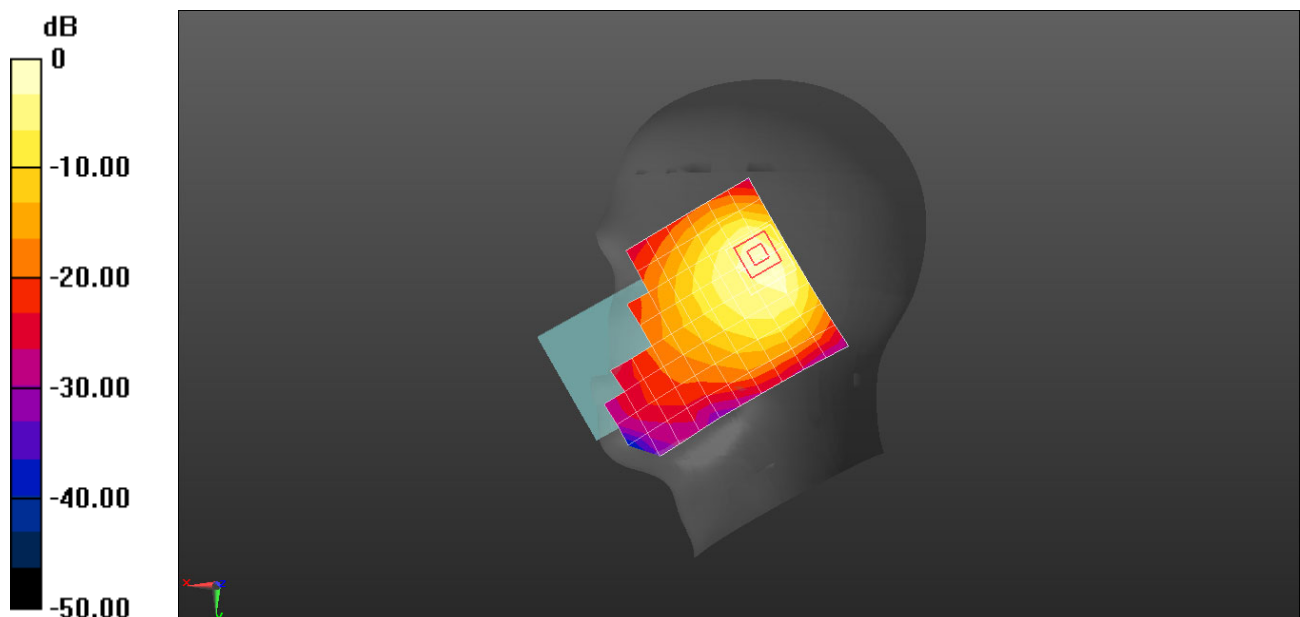
Configuration/Head/Zoom Scan (7x6x7)/Cube 0: Measurement grid: $dx=8$ mm, $dy=8$ mm, $dz=5$ mm

Reference Value = 24.37 V/m; Power Drift = -0.10 dB

Peak SAR (extrapolated) = 1.35 W/kg

SAR(1 g) = 0.370 W/kg; SAR(10 g) = 0.152 W/kg

Maximum value of SAR (measured) = 0.924 W/kg



0 dB = 0.525 W/kg = -2.80 dBW/kg

Test Laboratory: HUAWEI SAR/HAC Lab

ELE-L04 LTE Band 17 10M QPSK 1RB 49 Offset 23800CH Back Side 15mm-Second Antenna

DUT: ELE-L04; Type: Smart Phone; Serial: SAR3

Communication System: UID 0, LTE-FDD (SC-FDMA, 10MHz, QPSK/16-QAM) (0); Frequency: 711 MHz; Duty Cycle: 1:1

Medium parameters used: $f = 711 \text{ MHz}$; $\sigma = 0.943 \text{ S/m}$; $\epsilon_r = 53.202$; $\rho = 1000 \text{ kg/m}^3$

Phantom section: Flat Section

DASY Configuration:

- Probe: EX3DV4 - SN7505; ConvF(9.96, 9.96, 9.96) @ 711 MHz; Calibrated: 2018-6-12
- Sensor-Surface: 1.4mm (Mechanical Surface Detection), $z = 1.0, 31.0$
- Electronics: DAE4 Sn852; Calibrated: 2018-4-23
- Phantom: SAM5; Type: SAM; Serial: 1892
- DASY52 52.10.1(1476); SEMCAD X 14.6.11(7439)

Configuration/Body/Area Scan (8x14x1): Measurement grid: $dx=15\text{mm}$, $dy=15\text{mm}$

Maximum value of SAR (measured) = 0.0750 W/kg

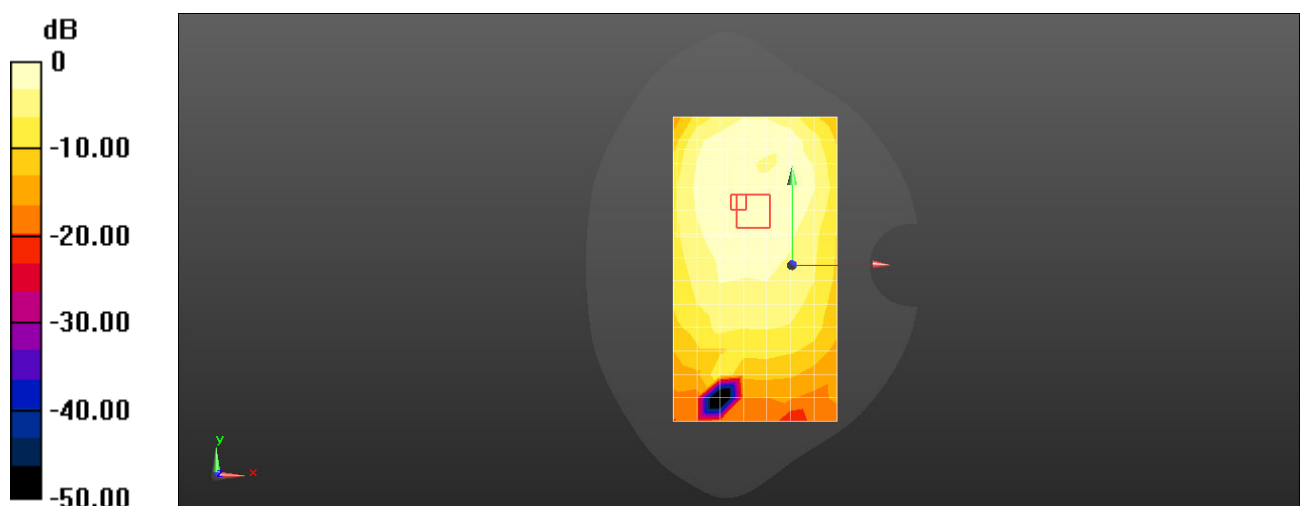
Configuration/Body/Zoom Scan (9x8x7)/Cube 0: Measurement grid: $dx=8\text{mm}$, $dy=8\text{mm}$, $dz=5\text{mm}$

Reference Value = 6.947 V/m; Power Drift = -0.12 dB

Peak SAR (extrapolated) = 0.0870 W/kg

SAR(1 g) = 0.059 W/kg; SAR(10 g) = 0.043 W/kg

Maximum value of SAR (measured) = 0.0764 W/kg



0 dB = 0.0750 W/kg = -11.25 dBW/kg

Test Laboratory: HUAWEI SAR/HAC Lab

ELE-L04 LTE Band 17 10M QPSK 1RB 49 Offset 23800CH Back Side 10mm with Battery2-Second Antenna

DUT: ELE-L04; Type: Smart Phone; Serial: SAR3

Communication System: UID 0, LTE-FDD (SC-FDMA, 10MHz, QPSK/16-QAM) (0); Frequency: 711 MHz; Duty Cycle: 1:1

Medium parameters used: $f = 711 \text{ MHz}$; $\sigma = 0.943 \text{ S/m}$; $\epsilon_r = 53.202$; $\rho = 1000 \text{ kg/m}^3$

Phantom section: Flat Section

DASY Configuration:

- Probe: EX3DV4 - SN7505; ConvF(9.96, 9.96, 9.96) @ 711 MHz; Calibrated: 2018-6-12
- Sensor-Surface: 1.4mm (Mechanical Surface Detection), $z = 1.0, 31.0$
- Electronics: DAE4 Sn852; Calibrated: 2018-4-23
- Phantom: SAM5; Type: SAM; Serial: 1892
- DASY52 52.10.1(1476); SEMCAD X 14.6.11(7439)

Configuration/Body/Area Scan (8x15x1): Measurement grid: $dx=15\text{mm}$, $dy=15\text{mm}$

Maximum value of SAR (measured) = 0.148 W/kg

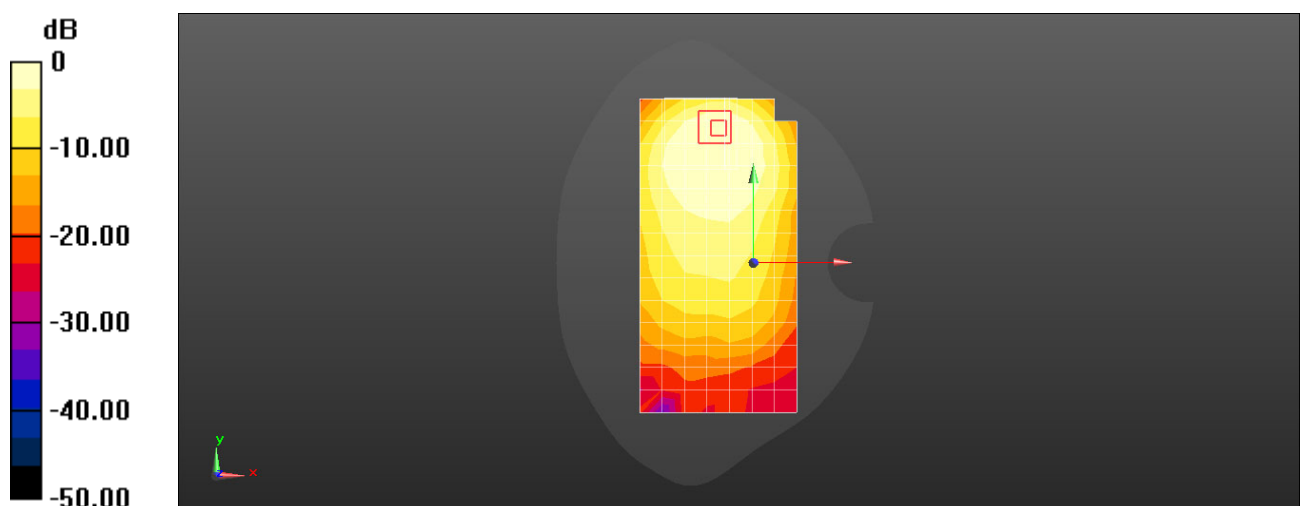
Configuration/Body/Zoom Scan (7x7x7)/Cube 0: Measurement grid: $dx=8\text{mm}$, $dy=8\text{mm}$, $dz=5\text{mm}$

Reference Value = 6.922 V/m; Power Drift = -0.02 dB

Peak SAR (extrapolated) = 0.201 W/kg

SAR(1 g) = 0.121 W/kg; SAR(10 g) = 0.070 W/kg

Maximum value of SAR (measured) = 0.174 W/kg



0 dB = 0.148 W/kg = -8.30 dBW/kg

Test Laboratory: HUAWEI SAR/HAC Lab

ELE-L04 LTE Band 26 15M QPSK 1RB 74 Offset 26965CH Right Cheek-Second Antenna

DUT: ELE-L04; Type: Smart Phone; Serial: SAR6

Communication System: UID 0, LTE-FDD (SC-FDMA, 15MHz, QPSK/16-QAM) (0); Frequency: 841.5 MHz; Duty Cycle: 1:1

Medium parameters used (interpolated): $f = 841.5$ MHz; $\sigma = 0.94$ S/m; $\epsilon_r = 41.995$; $\rho = 1000$ kg/m³

Phantom section: Right Section

DASY Configuration:

- Probe: EX3DV4 - SN3736; ConvF(8.86, 8.86, 8.86) @ 841.5 MHz; Calibrated: 2018-4-27
- Sensor-Surface: 1.4mm (Mechanical Surface Detection), $z = 1.0, 31.0$
- Electronics: DAE4 Sn851; Calibrated: 2018-7-18
- Phantom: SAM9; Type: SAM; Serial: 1958
- DASY52 52.10.1(1476); SEMCAD X 14.6.11(7439)

Configuration/Head/Area Scan (9x13x1): Measurement grid: dx=15mm, dy=15mm

[Info: Interpolated medium parameters used for SAR evaluation.](#)

Maximum value of SAR (measured) = 0.462 W/kg

Configuration/Head/Zoom Scan (5x5x7)/Cube 0: Measurement grid: dx=8mm, dy=8mm, dz=5mm

Reference Value = 15.77 V/m; Power Drift = -0.02 dB

Peak SAR (extrapolated) = 0.812 W/kg

SAR(1 g) = 0.375 W/kg; SAR(10 g) = 0.191 W/kg

[Info: Interpolated medium parameters used for SAR evaluation.](#)

Maximum value of SAR (measured) = 0.636 W/kg

Configuration/Head/Zoom Scan (5x5x7)/Cube 1: Measurement grid: dx=8mm, dy=8mm, dz=5mm

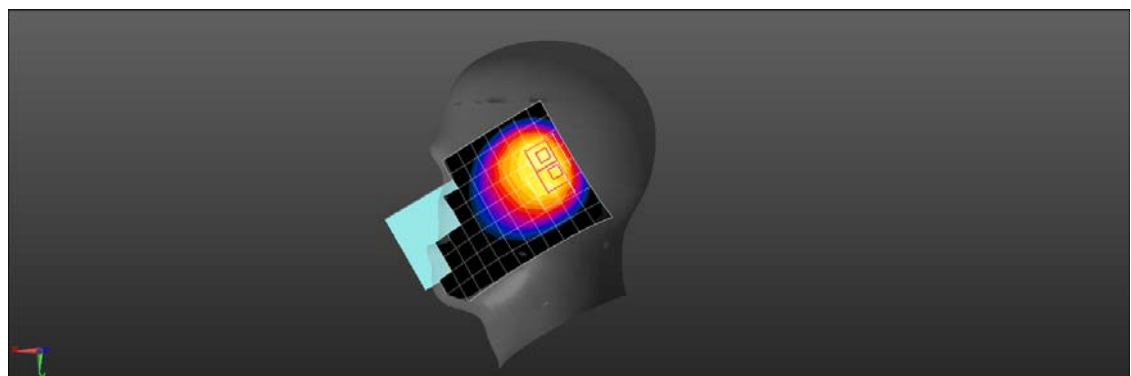
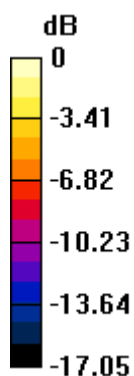
Reference Value = 15.77 V/m; Power Drift = -0.02 dB

Peak SAR (extrapolated) = 0.777 W/kg

SAR(1 g) = 0.339 W/kg; SAR(10 g) = 0.170 W/kg

[Info: Interpolated medium parameters used for SAR evaluation.](#)

Maximum value of SAR (measured) = 0.597 W/kg



0 dB = 0.597 W/kg = -2.24 dBW/kg

Test Laboratory: HUAWEI SAR/HAC Lab

ELE-L04 LTE Band 26 15M QPSK 1RB 0 Offset 26865CH Right Cheek-Main Antenna

DUT: ELE-L04; Type: Smart Phone; Serial: SAR6

Communication System: UID 0, LTE-FDD (SC-FDMA, 15MHz, QPSK/16-QAM) (0); Frequency: 831.5 MHz; Duty Cycle: 1:1

Medium parameters used (interpolated): $f = 831.5$ MHz; $\sigma = 0.937$ S/m; $\epsilon_r = 42.031$; $\rho = 1000$ kg/m³

Phantom section: Right Section

DASY Configuration:

- Probe: EX3DV4 - SN3736; ConvF(8.86, 8.86, 8.86) @ 831.5 MHz; Calibrated: 2018-4-27
- Sensor-Surface: 1.4mm (Mechanical Surface Detection), $z = 1.0, 31.0$
- Electronics: DAE4 Sn851; Calibrated: 2018-7-18
- Phantom: SAM9; Type: SAM; Serial: 1958
- DASY52 52.10.1(1476); SEMCAD X 14.6.11(7439)

Configuration/Head/Area Scan (9x13x1): Measurement grid: $dx=15$ mm, $dy=15$ mm

[Info: Interpolated medium parameters used for SAR evaluation.](#)

Maximum value of SAR (measured) = 0.160 W/kg

Configuration/Head/Zoom Scan (7x7x7)/Cube 0: Measurement grid: $dx=8$ mm, $dy=8$ mm, $dz=5$ mm

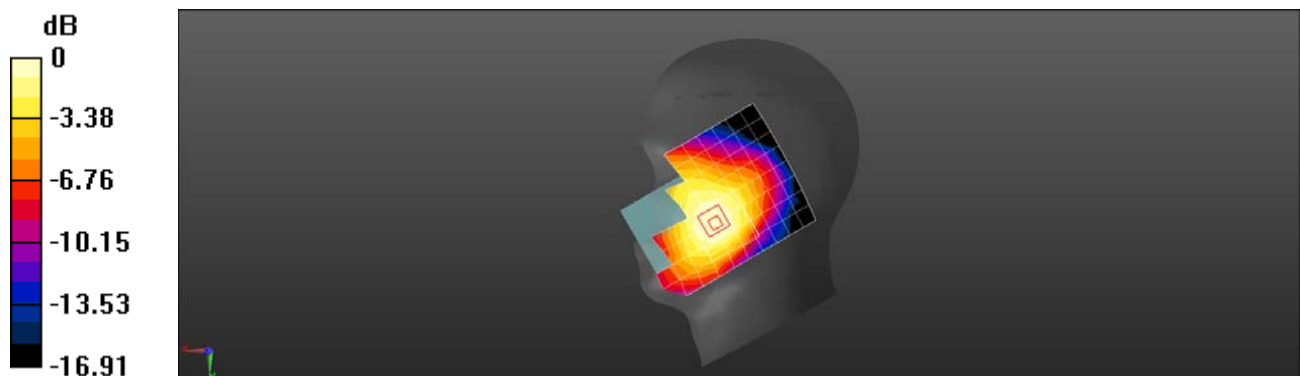
Reference Value = 11.69 V/m; Power Drift = 0.14 dB

Peak SAR (extrapolated) = 0.175 W/kg

SAR(1 g) = 0.142 W/kg; SAR(10 g) = 0.112 W/kg

[Info: Interpolated medium parameters used for SAR evaluation.](#)

Maximum value of SAR (measured) = 0.163 W/kg



0 dB = 0.163 W/kg = -7.88 dBW/kg

Test Laboratory: HUAWEI SAR/HAC Lab

ELE-L04 LTE Band 26 15M QPSK 50%RB 18 Offset 26965CH Back Side 15mm-Second Antenna

DUT: ELE-L04; Type: Smart Phone; Serial: SAR3

Communication System: UID 0, LTE-FDD (SC-FDMA, 15MHz, QPSK/16-QAM) (0); Frequency: 841.5 MHz; Duty Cycle: 1:1

Medium parameters used (interpolated): $f = 841.5$ MHz; $\sigma = 0.996$ S/m; $\epsilon_r = 52.712$; $\rho = 1000$ kg/m³

Phantom section: Flat Section

DASY Configuration:

- Probe: EX3DV4 - SN7505; ConvF(9.73, 9.73, 9.73) @ 841.5 MHz; Calibrated: 2018-6-12
- Sensor-Surface: 1.4mm (Mechanical Surface Detection), $z = 1.0, 31.0$
- Electronics: DAE4 Sn852; Calibrated: 2018-4-23
- Phantom: SAM5; Type: SAM; Serial: 1892
- DASY52 52.10.1(1476); SEMCAD X 14.6.11(7439)

Configuration/Body/Area Scan (8x14x1): Measurement grid: $dx=15$ mm, $dy=15$ mm

[Info: Interpolated medium parameters used for SAR evaluation.](#)

Maximum value of SAR (measured) = 0.145 W/kg

Configuration/Body/Zoom Scan (6x6x7)/Cube 0: Measurement grid: $dx=8$ mm, $dy=8$ mm, $dz=5$ mm

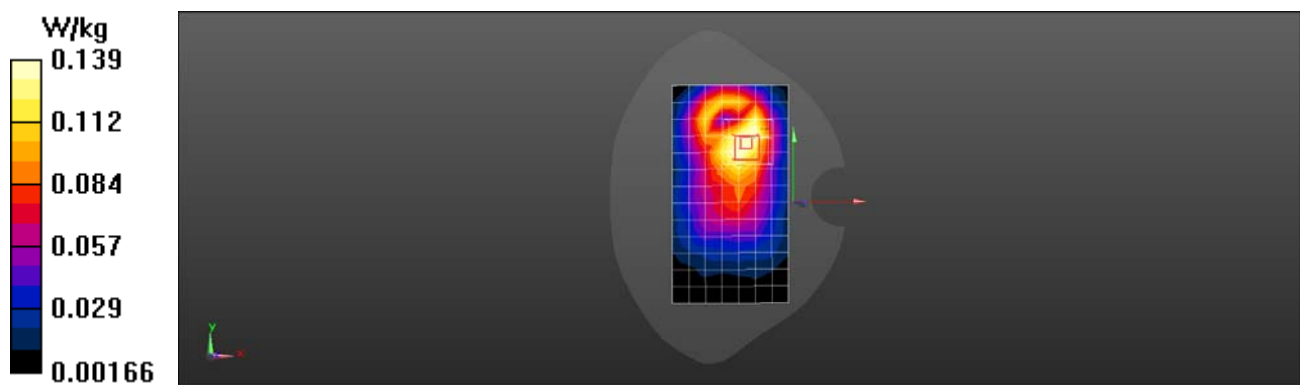
Reference Value = 9.167 V/m; Power Drift = -0.10 dB

Peak SAR (extrapolated) = 0.150 W/kg

SAR(1 g) = 0.122 W/kg; SAR(10 g) = 0.088 W/kg

[Info: Interpolated medium parameters used for SAR evaluation.](#)

Maximum value of SAR (measured) = 0.139 W/kg



Test Laboratory: HUAWEI SAR/HAC Lab

ELE-L04 LTE Band 26 15M QPSK 1RB 0 Offset 26865CH Back Side 15mm with Battery2-Main Antenna

DUT: ELE-L04; Type: Smart Phone; Serial: SAR3

Communication System: UID 0, LTE-FDD (SC-FDMA, 15MHz, QPSK/16-QAM) (0); Frequency: 831.5 MHz; Duty Cycle: 1:1

Medium parameters used (interpolated): $f = 831.5$ MHz; $\sigma = 0.993$ S/m; $\epsilon_r = 52.738$; $\rho = 1000$ kg/m³

Phantom section: Flat Section

DASY Configuration:

- Probe: EX3DV4 - SN7505; ConvF(9.73, 9.73, 9.73) @ 831.5 MHz; Calibrated: 2018-6-12
- Sensor-Surface: 1.4mm (Mechanical Surface Detection), $z = 1.0, 31.0$
- Electronics: DAE4 Sn852; Calibrated: 2018-4-23
- Phantom: SAM5; Type: SAM; Serial: 1892
- DASY52 52.10.1(1476); SEMCAD X 14.6.11(7439)

Configuration/Body/Area Scan (8x14x1): Measurement grid: dx=15mm, dy=15mm

[Info: Interpolated medium parameters used for SAR evaluation.](#)

Maximum value of SAR (measured) = 0.362 W/kg

Configuration/Body/Zoom Scan (5x6x7)/Cube 0: Measurement grid: dx=8mm, dy=8mm, dz=5mm

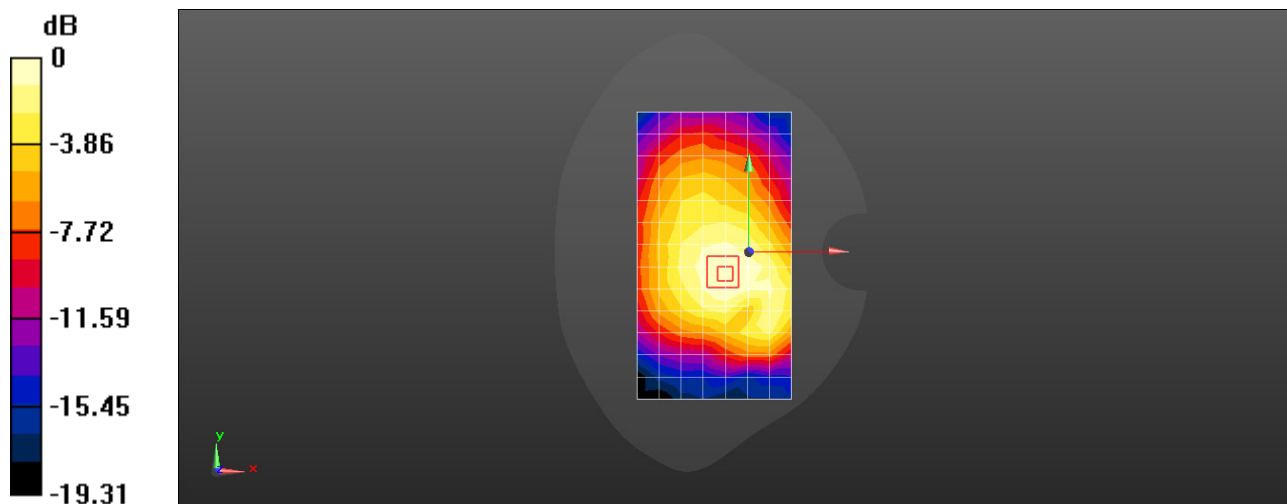
Reference Value = 17.91 V/m; Power Drift = -0.07 dB

Peak SAR (extrapolated) = 0.362 W/kg

SAR(1 g) = 0.304 W/kg; SAR(10 g) = 0.230 W/kg

[Info: Interpolated medium parameters used for SAR evaluation.](#)

Maximum value of SAR (measured) = 0.345 W/kg



0 dB = 0.362 W/kg = -4.41 dBW/kg

Test Laboratory: HUAWEI SAR/HAC Lab

ELE-L04 LTE Band 26 15M QPSK 50%RB 39 Offset 26965CH Back Side 10mm with Battery2-Second Antenna

DUT: ELE-L04; Type: Smart Phone; Serial: SAR3

Communication System: UID 0, LTE-FDD (SC-FDMA, 15MHz, QPSK/16-QAM) (0); Frequency: 841.5 MHz; Duty Cycle: 1:1

Medium parameters used (interpolated): $f = 841.5$ MHz; $\sigma = 0.996$ S/m; $\epsilon_r = 52.712$; $\rho = 1000$ kg/m³

Phantom section: Flat Section

DASY Configuration:

- Probe: EX3DV4 - SN7505; ConvF(9.73, 9.73, 9.73) @ 841.5 MHz; Calibrated: 2018-6-12
- Sensor-Surface: 1.4mm (Mechanical Surface Detection), $z = 1.0, 31.0$
- Electronics: DAE4 Sn852; Calibrated: 2018-4-23
- Phantom: SAM5; Type: SAM; Serial: 1892
- DASY52 52.10.1(1476); SEMCAD X 14.6.11(7439)

Configuration/Body/Area Scan (8x14x1): Measurement grid: $dx=15$ mm, $dy=15$ mm

[Info: Interpolated medium parameters used for SAR evaluation.](#)

Maximum value of SAR (measured) = 0.254 W/kg

Configuration/Body/Zoom Scan (6x6x7)/Cube 0: Measurement grid: $dx=8$ mm, $dy=8$ mm, $dz=5$ mm

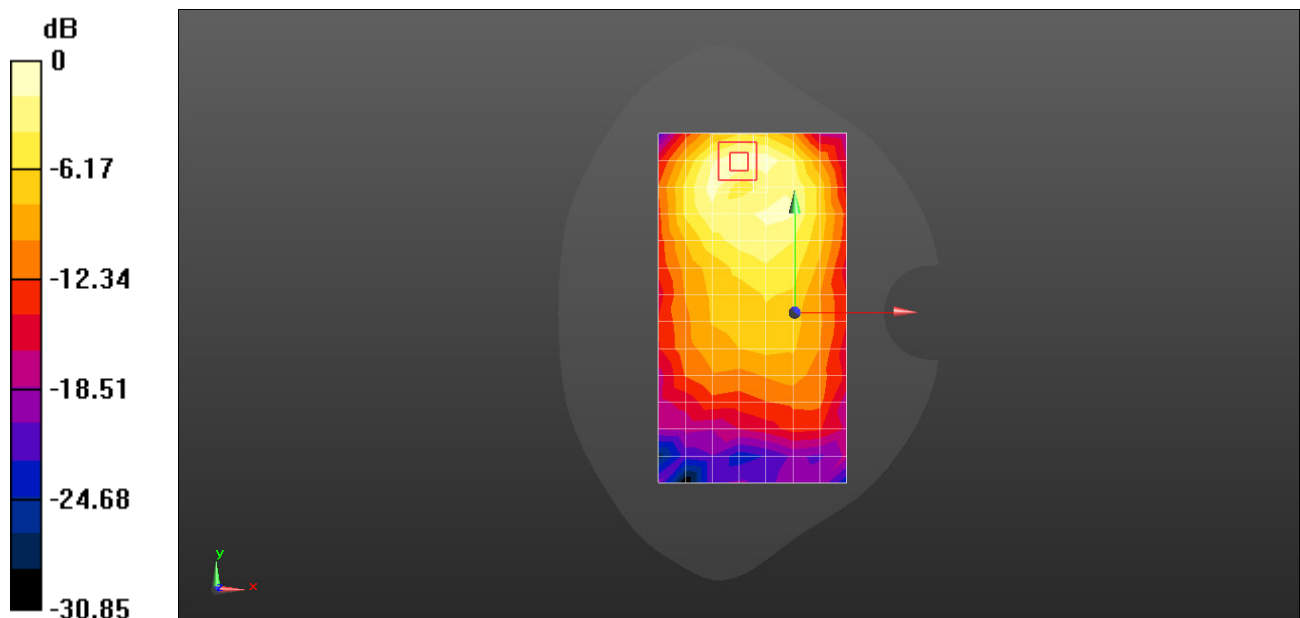
Reference Value = 8.593 V/m; Power Drift = -0.10 dB

Peak SAR (extrapolated) = 0.263 W/kg

SAR(1 g) = 0.166 W/kg; SAR(10 g) = 0.096 W/kg

[Info: Interpolated medium parameters used for SAR evaluation.](#)

Maximum value of SAR (measured) = 0.227 W/kg



0 dB = 0.254 W/kg = -5.95 dBW/kg

Test Laboratory: HUAWEI SAR/HAC Lab

ELE-L04 LTE Band 26 15M QPSK 1RB 0 Offset 26865CH Back Side 10mm-Main Antenna

DUT: ELE-L04; Type: Smart Phone; Serial: SAR3

Communication System: UID 0, LTE-FDD (SC-FDMA, 15MHz, QPSK/16-QAM) (0); Frequency: 831.5 MHz; Duty Cycle: 1:1

Medium parameters used (interpolated): $f = 831.5$ MHz; $\sigma = 0.993$ S/m; $\epsilon_r = 52.738$; $\rho = 1000$ kg/m³

Phantom section: Flat Section

DASY Configuration:

- Probe: EX3DV4 - SN7505; ConvF(9.73, 9.73, 9.73) @ 831.5 MHz; Calibrated: 2018-6-12
- Sensor-Surface: 1.4mm (Mechanical Surface Detection), $z = 1.0, 31.0$
- Electronics: DAE4 Sn852; Calibrated: 2018-4-23
- Phantom: SAM5; Type: SAM; Serial: 1892
- DASY52 52.10.1(1476); SEMCAD X 14.6.11(7439)

Configuration/Body/Area Scan (8x14x1): Measurement grid: $dx=15$ mm, $dy=15$ mm

[Info: Interpolated medium parameters used for SAR evaluation.](#)

Maximum value of SAR (measured) = 0.590 W/kg

Configuration/Body/Zoom Scan (8x7x7)/Cube 0: Measurement grid: $dx=8$ mm, $dy=8$ mm, $dz=5$ mm

Reference Value = 16.87 V/m; Power Drift = -0.05 dB

Peak SAR (extrapolated) = 0.707 W/kg

SAR(1 g) = 0.437 W/kg; SAR(10 g) = 0.323 W/kg

[Info: Interpolated medium parameters used for SAR evaluation.](#)

Maximum value of SAR (measured) = 0.574 W/kg

Configuration/Body/Zoom Scan (8x7x7)/Cube 1: Measurement grid: $dx=8$ mm, $dy=8$ mm, $dz=5$ mm

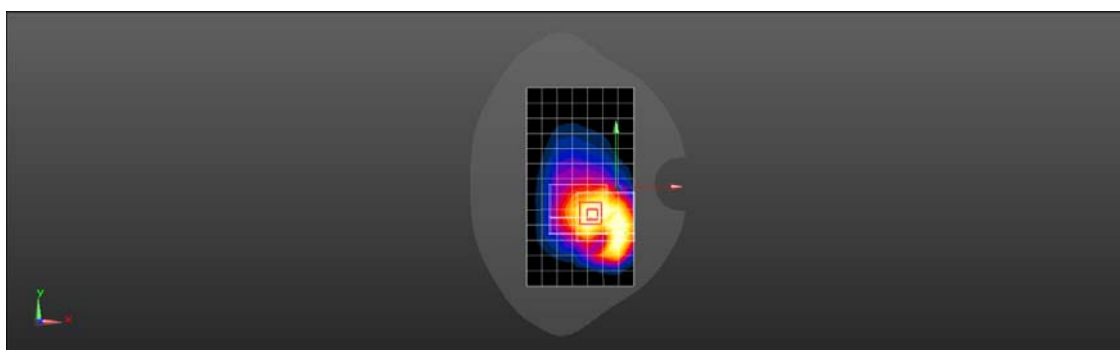
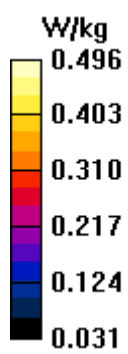
Reference Value = 16.87 V/m; Power Drift = -0.05 dB

Peak SAR (extrapolated) = 0.521 W/kg

SAR(1 g) = 0.437 W/kg; SAR(10 g) = 0.324 W/kg

[Info: Interpolated medium parameters used for SAR evaluation.](#)

Maximum value of SAR (measured) = 0.496 W/kg



Test Laboratory: HUAWEI SAR/HAC Lab

ELE-L04 LTE Band 38 20M QPSK 50%RB 0 Offset 37850CH Right Tilt-Second Antenna

DUT: ELE-L04; Type: Smart Phone; Serial: SAR3

Communication System: UID 0, LTE-TDD (SC-FDMA, 20MHz, QPSK/16-QAM) (0); Frequency: 2580 MHz; Duty Cycle: 1:1.57943

Medium parameters used: $f = 2580$ MHz; $\sigma = 1.9$ S/m; $\epsilon_r = 40.319$; $\rho = 1000$ kg/m³

Phantom section: Right Section

DASY Configuration:

- Probe: EX3DV4 - SN7505; ConvF(7.18, 7.18, 7.18) @ 2580 MHz; Calibrated: 2018-6-12
- Sensor-Surface: 1.4mm (Mechanical Surface Detection), $z = 1.0, 31.0$
- Electronics: DAE4 Sn852; Calibrated: 2018-4-23
- Phantom: SAM5; Type: SAM; Serial: 1892
- DASY52 52.10.1(1476); SEMCAD X 14.6.11(7439)

Configuration/Head/Area Scan (10x16x1): Measurement grid: $dx=12$ mm, $dy=12$ mm

Maximum value of SAR (measured) = 0.605 W/kg

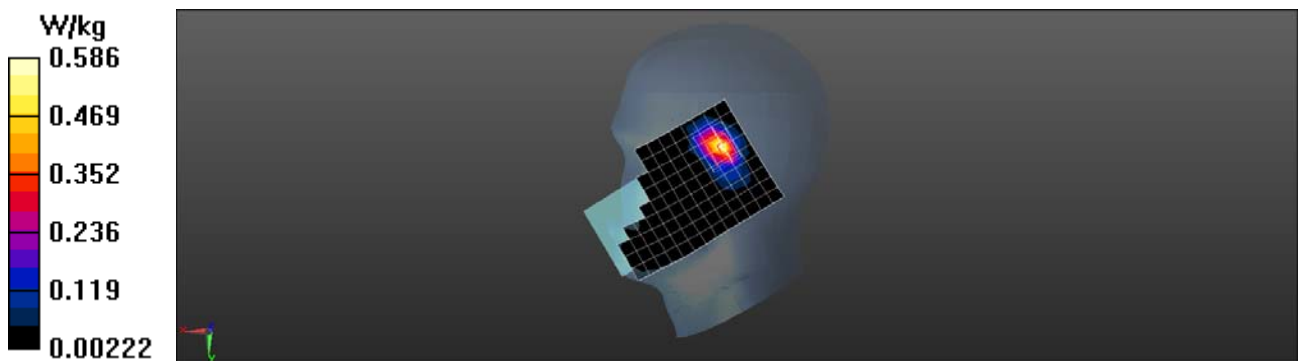
Configuration/Head/Zoom Scan (8x7x7)/Cube 0: Measurement grid: $dx=5$ mm, $dy=5$ mm, $dz=5$ mm

Reference Value = 13.01 V/m; Power Drift = -0.14 dB

Peak SAR (extrapolated) = 0.727 W/kg

SAR(1 g) = 0.344 W/kg; SAR(10 g) = 0.159 W/kg

Maximum value of SAR (measured) = 0.586 W/kg



Test Laboratory: HUAWEI SAR/HAC Lab

ELE-L04 LTE Band 38 20M QPSK 1RB 50 Offset 37850CH Right Cheek-Main Antenna

DUT: ELE-L04; Type: Smart Phone; Serial: SAR3

Communication System: UID 0, LTE-TDD (SC-FDMA, 20MHz, QPSK/16-QAM) (0); Frequency: 2580 MHz; Duty Cycle: 1:1.57943

Medium parameters used: $f = 2580$ MHz; $\sigma = 1.9$ S/m; $\epsilon_r = 40.319$; $\rho = 1000$ kg/m³

Phantom section: Right Section

DASY Configuration:

- Probe: EX3DV4 - SN7505; ConvF(7.18, 7.18, 7.18) @ 2580 MHz; Calibrated: 2018-6-12
- Sensor-Surface: 1.4mm (Mechanical Surface Detection), $z = 1.0, 31.0$
- Electronics: DAE4 Sn852; Calibrated: 2018-4-23
- Phantom: SAM5; Type: SAM; Serial: 1892
- DASY52 52.10.1(1476); SEMCAD X 14.6.11(7439)

Configuration/Head/Area Scan (10x16x1): Measurement grid: $dx=12$ mm, $dy=12$ mm

Maximum value of SAR (measured) = 0.174 W/kg

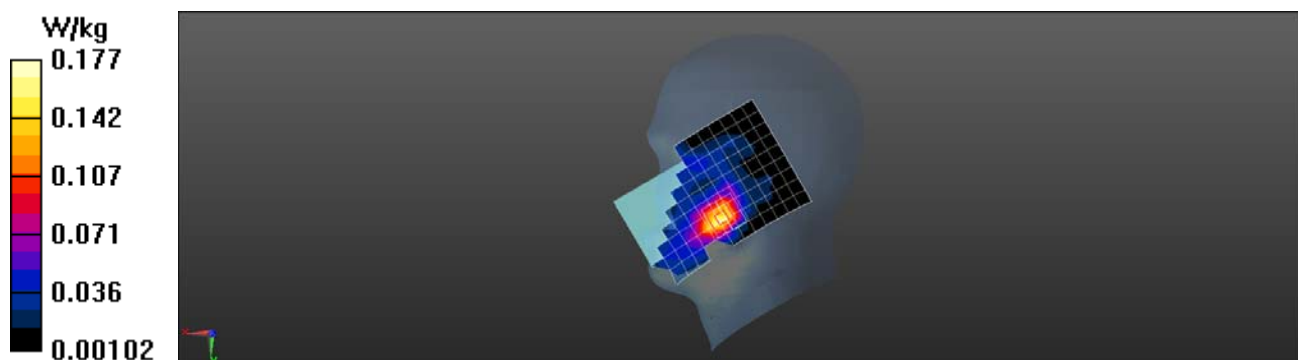
Configuration/Head/Zoom Scan (7x7x7)/Cube 0: Measurement grid: $dx=5$ mm, $dy=5$ mm, $dz=5$ mm

Reference Value = 2.226 V/m; Power Drift = 0.10 dB

Peak SAR (extrapolated) = 0.207 W/kg

SAR(1 g) = 0.129 W/kg; SAR(10 g) = 0.071 W/kg

Maximum value of SAR (measured) = 0.177 W/kg



Test Laboratory: HUAWEI SAR/HAC Lab

ELE-L04 LTE Band 38 20M QPSK 50%RB 50 Offset 38150CH Back Side 15mm-Second Antenna

DUT: ELE-L04; Type: Smart Phone; Serial: SAR3

Communication System: UID 0, LTE-TDD (SC-FDMA, 20MHz, QPSK/16-QAM) (0); Frequency: 2610 MHz; Duty Cycle: 1:1.57943

Medium parameters used (interpolated): $f = 2610$ MHz; $\sigma = 2.161$ S/m; $\epsilon_r = 50.644$; $\rho = 1000$ kg/m³

Phantom section: Flat Section

DASY Configuration:

- Probe: EX3DV4 - SN7505; ConvF(7.23, 7.23, 7.23) @ 2610 MHz; Calibrated: 2018-6-12
- Sensor-Surface: 1.4mm (Mechanical Surface Detection), $z = 1.0, 31.0$
- Electronics: DAE4 Sn852; Calibrated: 2018-4-23
- Phantom: SAM6; Type: SAM; Serial: 1894
- DASY52 52.10.1(1476); SEMCAD X 14.6.11(7439)

Configuration/Body/Area Scan (10x16x1): Measurement grid: $dx=12$ mm, $dy=12$ mm

[Info: Interpolated medium parameters used for SAR evaluation.](#)

Maximum value of SAR (measured) = 0.188 W/kg

Configuration/Body/Zoom Scan (7x7x7)/Cube 0: Measurement grid: $dx=5$ mm, $dy=5$ mm, $dz=5$ mm

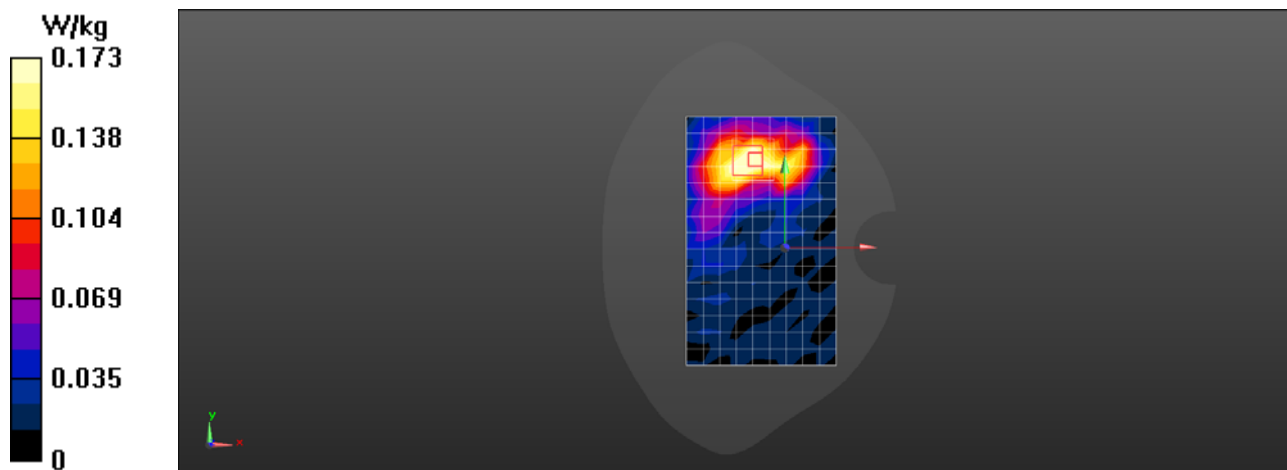
Reference Value = 9.055 V/m; Power Drift = -0.07 dB

Peak SAR (extrapolated) = 0.205 W/kg

SAR(1 g) = 0.117 W/kg; SAR(10 g) = 0.067 W/kg

[Info: Interpolated medium parameters used for SAR evaluation.](#)

Maximum value of SAR (measured) = 0.173 W/kg



Test Laboratory: HUAWEI SAR/HAC Lab

ELE-L04 LTE Band 38 20M QPSK 1RB 0 Offset 38000CH Back Side 15mm-Main Antenna

DUT: ELE-L04; Type: Smart Phone; Serial: SAR1

Communication System: UID 0, LTE-TDD (SC-FDMA, 20MHz, QPSK/16-QAM) (0); Frequency: 2595 MHz; Duty Cycle: 1:1.57943

Medium parameters used: $f = 2595$ MHz; $\sigma = 2.178$ S/m; $\epsilon_r = 50.464$; $\rho = 1000$ kg/m³

Phantom section: Flat Section

DASY Configuration:

- Probe: EX3DV4 - SN3744; ConvF(7.35, 7.35, 7.35) @ 2595 MHz; Calibrated: 2018-7-25
- Sensor-Surface: 1.4mm (Mechanical Surface Detection), $z = 1.0, 31.0$
- Electronics: DAE3 Sn393; Calibrated: 2018-8-14
- Phantom: SAM2; Type: SAM; Serial: 1474
- DASY52 52.10.1(1476); SEMCAD X 14.6.11(7439)

Configuration/Body/Area Scan (10x16x1): Measurement grid: $dx=12$ mm, $dy=12$ mm

Maximum value of SAR (measured) = 0.227 W/kg

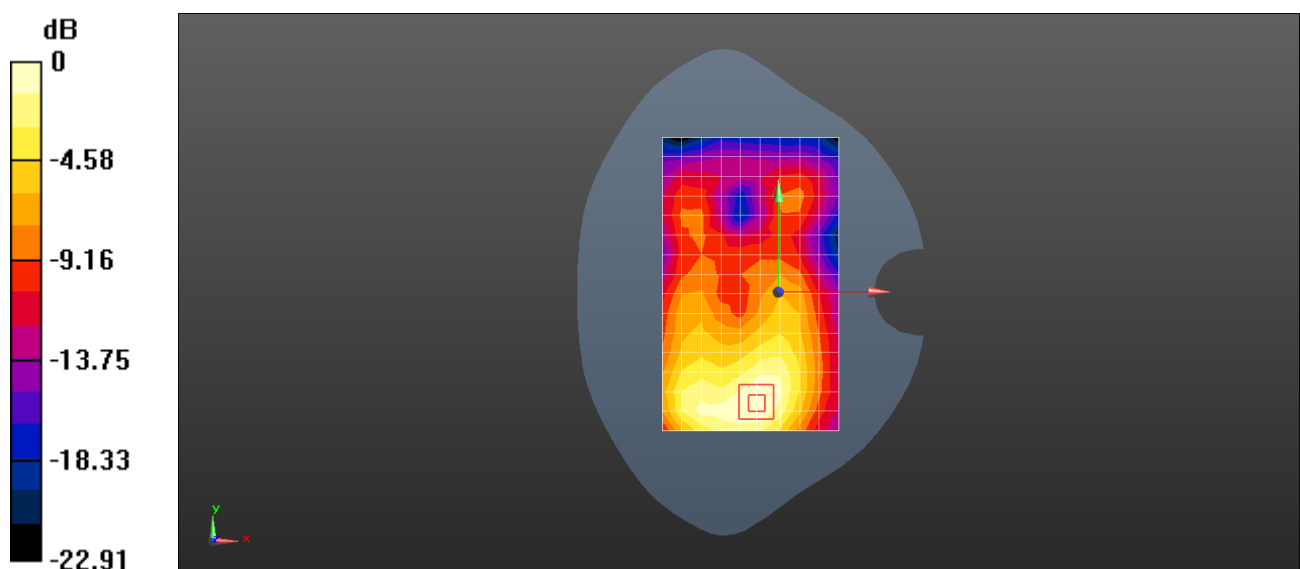
Configuration/Body/Zoom Scan (7x7x7)/Cube 0: Measurement grid: $dx=5$ mm, $dy=5$ mm, $dz=5$ mm

Reference Value = 1.005 V/m; Power Drift = 0.02 dB

Peak SAR (extrapolated) = 0.302 W/kg

SAR(1 g) = 0.160 W/kg; SAR(10 g) = 0.088 W/kg

Maximum value of SAR (measured) = 0.246 W/kg



0 dB = 0.227 W/kg = -6.44 dBW/kg

Test Laboratory: HUAWEI SAR/HAC Lab

ELE-L04 CA_38C P_1@99 37850CH S_1@0 38048CH Top Side 10mm with Battery2-Second Antenna

DUT: ELE-L04; Type: Smart Phone; Serial: SAR1

Communication System: UID 0, LTE-TDD (SC-FDMA, 20MHz, QPSK/16-QAM) (0); Frequency: 2580 MHz; Duty Cycle: 1:1.57943

Medium parameters used: $f = 2580$ MHz; $\sigma = 2.184$ S/m; $\epsilon_r = 50.558$; $\rho = 1000$ kg/m³
Phantom section: Flat Section

DASY Configuration:

- Probe: EX3DV4 - SN3744; ConvF(7.35, 7.35, 7.35) @ 2580 MHz; Calibrated: 2018-7-25
- Sensor-Surface: 1.4mm (Mechanical Surface Detection), $z = 1.0, 31.0$
- Electronics: DAE3 Sn393; Calibrated: 2018-8-14
- Phantom: SAM2; Type: SAM; Serial: 1474
- DASY52 52.10.1(1476); SEMCAD X 14.6.11(7439)

Configuration/Body/Area Scan (5x11x1): Measurement grid: $dx=12$ mm, $dy=12$ mm
Maximum value of SAR (measured) = 0.478 W/kg

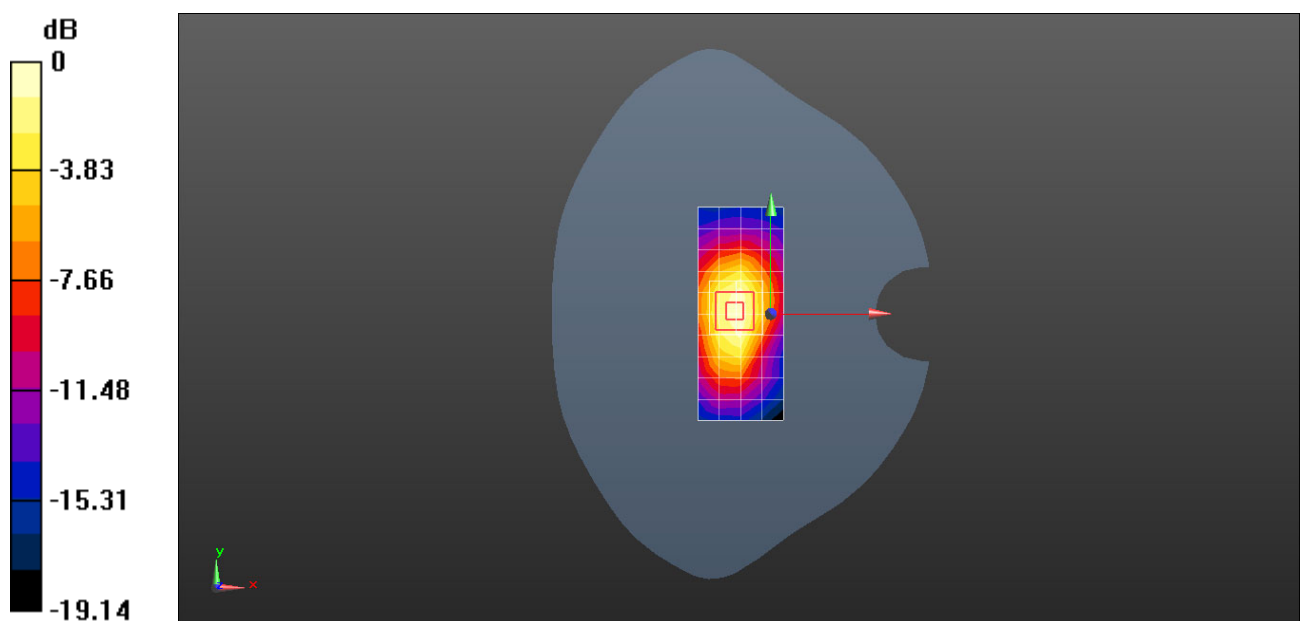
Configuration/Body/Zoom Scan (7x7x7)/Cube 0: Measurement grid: $dx=5$ mm, $dy=5$ mm, $dz=5$ mm

Reference Value = 15.43 V/m; Power Drift = -0.01 dB

Peak SAR (extrapolated) = 0.636 W/kg

SAR(1 g) = 0.320 W/kg; SAR(10 g) = 0.163 W/kg

Maximum value of SAR (measured) = 0.510 W/kg



0 dB = 0.478 W/kg = -3.21 dBW/kg

Test Laboratory: HUAWEI SAR/HAC Lab

ELE-L04 CA_38C P_1@0 38150CH S_1@99 37952CH Bottom Side 10mm with Battery2-Main Antenna

DUT: ELE-L04; Type: Smart Phone; Serial: SAR1

Communication System: UID 0, LTE-TDD (SC-FDMA, 20MHz, QPSK/16-QAM) (0); Frequency: 2610 MHz; Duty Cycle: 1:1.57943

Medium parameters used (interpolated): $f = 2610$ MHz; $\sigma = 2.193$ S/m; $\epsilon_r = 50.441$; $\rho = 1000$ kg/m³

Phantom section: Flat Section

DASY Configuration:

- Probe: EX3DV4 - SN3744; ConvF(7.35, 7.35, 7.35) @ 2610 MHz; Calibrated: 2018-7-25
- Sensor-Surface: 1.4mm (Mechanical Surface Detection), $z = 1.0, 31.0$
- Electronics: DAE3 Sn393; Calibrated: 2018-8-14
- Phantom: SAM2; Type: SAM; Serial: 1474
- DASY52 52.10.1(1476); SEMCAD X 14.6.11(7439)

Configuration/Body/Area Scan (5x11x1): Measurement grid: $dx=12$ mm, $dy=12$ mm

[Info: Interpolated medium parameters used for SAR evaluation.](#)

Maximum value of SAR (measured) = 0.475 W/kg

Configuration/Body/Zoom Scan (7x7x7)/Cube 0: Measurement grid: $dx=5$ mm, $dy=5$ mm, $dz=5$ mm

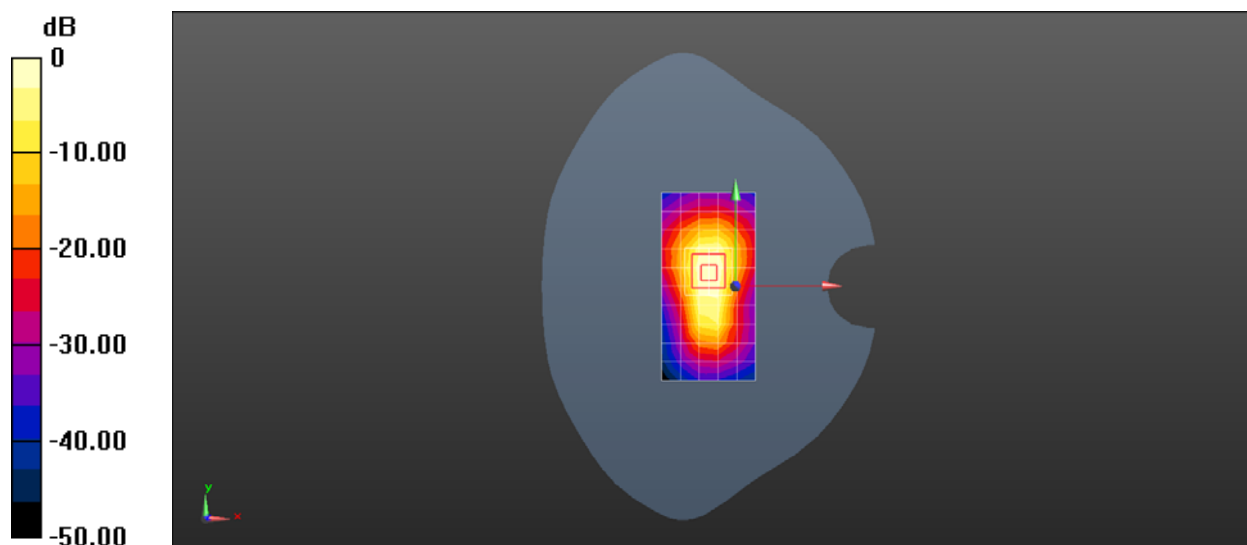
Reference Value = 2.165 V/m; Power Drift = -0.00 dB

Peak SAR (extrapolated) = 1.21 W/kg

SAR(1 g) = 0.388 W/kg; SAR(10 g) = 0.150 W/kg

[Info: Interpolated medium parameters used for SAR evaluation.](#)

Maximum value of SAR (measured) = 0.541 W/kg



0 dB = 0.475 W/kg = -3.23 dBW/kg

Test Laboratory: HUAWEI SAR/HAC Lab

ELE-L04 LTE Band 41 20M QPSK 1RB 0 Offset 40140CH Right Tilt-Second Antenna

DUT: ELE-L04; Type: Smart Phone; Serial: SAR6

Communication System: UID 0, LTE-TDD (SC-FDMA, 20MHz, QPSK/16-QAM) (0); Frequency: 2545 MHz; Duty Cycle: 1:1.57943

Medium parameters used (interpolated): $f = 2545$ MHz; $\sigma = 1.927$ S/m; $\epsilon_r = 38.613$; $\rho = 1000$ kg/m³

Phantom section: Right Section

DASY Configuration:

- Probe: EX3DV4 - SN3736; ConvF(6.93, 6.93, 6.93) @ 2545 MHz; Calibrated: 2018-4-27
- Sensor-Surface: 1.4mm (Mechanical Surface Detection), $z = 1.0, 31.0$
- Electronics: DAE4 Sn851; Calibrated: 2018-7-18
- Phantom: SAM9; Type: SAM; Serial: 1958
- DASY52 52.10.1(1476); SEMCAD X 14.6.11(7439)

Configuration/Head/Area Scan (10x17x1): Measurement grid: $dx=12$ mm, $dy=12$ mm

[Info: Interpolated medium parameters used for SAR evaluation.](#)

Maximum value of SAR (measured) = 0.488 W/kg

Configuration/Head/Zoom Scan (7x7x7)/Cube 0: Measurement grid: $dx=5$ mm, $dy=5$ mm, $dz=5$ mm

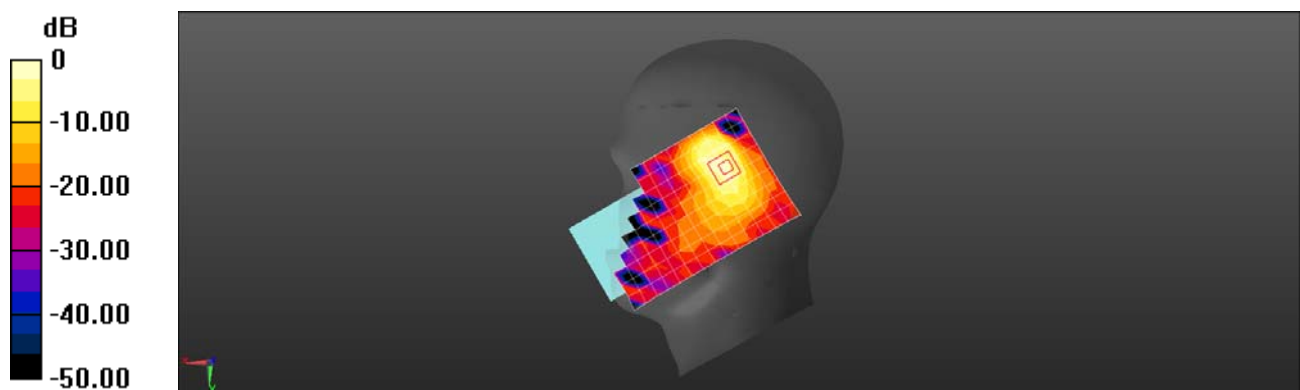
Reference Value = 11.48 V/m; Power Drift = -0.05 dB

Peak SAR (extrapolated) = 0.805 W/kg

SAR(1 g) = 0.308 W/kg; SAR(10 g) = 0.126 W/kg

[Info: Interpolated medium parameters used for SAR evaluation.](#)

Maximum value of SAR (measured) = 0.607 W/kg



0 dB = 0.488 W/kg = -3.12 dBW/kg

Test Laboratory: HUAWEI SAR/HAC Lab

ELE-L04 LTE Band 41 20M QPSK 1RB 0 Offset 40140CH Right Cheek with Battery2-Main Antenna

DUT: ELE-L04; Type: Smart Phone; Serial: SAR6

Communication System: UID 0, LTE-TDD (SC-FDMA, 20MHz, QPSK/16-QAM) (0); Frequency: 2545 MHz; Duty Cycle: 1:1.57943

Medium parameters used (interpolated): $f = 2545$ MHz; $\sigma = 1.927$ S/m; $\epsilon_r = 38.613$; $\rho = 1000$ kg/m³

Phantom section: Right Section

DASY Configuration:

- Probe: EX3DV4 - SN3736; ConvF(6.93, 6.93, 6.93) @ 2545 MHz; Calibrated: 2018-4-27
- Sensor-Surface: 1.4mm (Mechanical Surface Detection), $z = 1.0, 31.0$
- Electronics: DAE4 Sn851; Calibrated: 2018-7-18
- Phantom: SAM9; Type: SAM; Serial: 1958
- DASY52 52.10.1(1476); SEMCAD X 14.6.11(7439)

Configuration/Head/Area Scan (11x15x1): Measurement grid: $dx=12$ mm, $dy=12$ mm

[Info: Interpolated medium parameters used for SAR evaluation.](#)

Maximum value of SAR (measured) = 0.146 W/kg

Configuration/Head/Zoom Scan (9x7x7)/Cube 0: Measurement grid: $dx=5$ mm, $dy=5$ mm, $dz=5$ mm

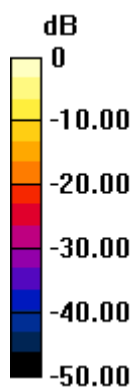
Reference Value = 6.139 V/m; Power Drift = 0.19 dB

Peak SAR (extrapolated) = 0.195 W/kg

SAR(1 g) = 0.106 W/kg; SAR(10 g) = 0.056 W/kg

[Info: Interpolated medium parameters used for SAR evaluation.](#)

Maximum value of SAR (measured) = 0.158 W/kg



0 dB = 0.146 W/kg = -8.36 dBW/kg

Test Laboratory: HUAWEI SAR/HAC Lab

ELE-L04 LTE Band 41 20M QPSK 1RB 0 Offset 41140CH Back Side 15mm with Battery2-Second Antenna

DUT: ELE-L04; Type: Smart Phone; Serial: SAR1

Communication System: UID 0, LTE-TDD (SC-FDMA, 20MHz, QPSK/16-QAM) (0); Frequency: 2645 MHz; Duty Cycle: 1:1.57943

Medium parameters used (interpolated): $f = 2645$ MHz; $\sigma = 2.242$ S/m; $\epsilon_r = 50.407$; $\rho = 1000$ kg/m³

Phantom section: Flat Section

DASY Configuration:

- Probe: EX3DV4 - SN3744; ConvF(7.35, 7.35, 7.35) @ 2645 MHz; Calibrated: 2018-7-25
- Sensor-Surface: 1.4mm (Mechanical Surface Detection), $z = 1.0, 31.0$
- Electronics: DAE3 Sn393; Calibrated: 2018-8-14
- Phantom: SAM2; Type: SAM; Serial: 1474
- DASY52 52.10.1(1476); SEMCAD X 14.6.11(7439)

Configuration/Body/Area Scan (10x16x1): Measurement grid: $dx=12$ mm, $dy=12$ mm

[Info: Interpolated medium parameters used for SAR evaluation.](#)

Maximum value of SAR (measured) = 0.244 W/kg

Configuration/Body/Zoom Scan (8x7x7)/Cube 0: Measurement grid: $dx=5$ mm, $dy=5$ mm, $dz=5$ mm

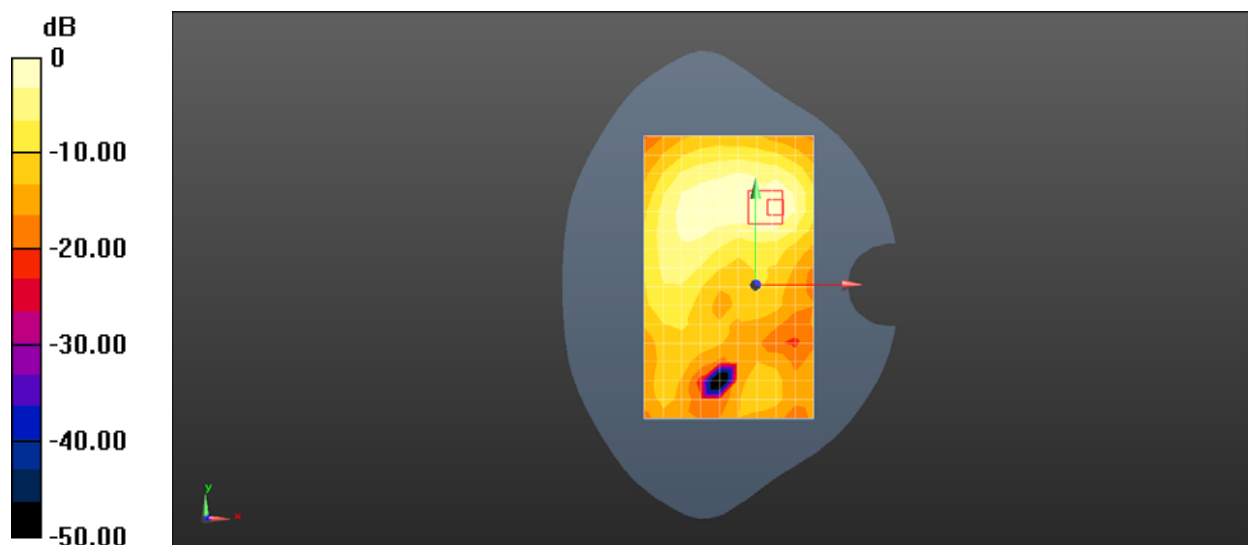
Reference Value = 8.824 V/m; Power Drift = -0.08 dB

Peak SAR (extrapolated) = 0.317 W/kg

SAR(1 g) = 0.148 W/kg; SAR(10 g) = 0.074 W/kg

[Info: Interpolated medium parameters used for SAR evaluation.](#)

Maximum value of SAR (measured) = 0.246 W/kg



Test Laboratory: HUAWEI SAR/HAC Lab

ELE-L04 LTE Band 41 20M QPSK 1RB 0 Offset 40140CH Back Side 15mm with Battery2-Main Antenna

DUT: ELE-L04; Type: Smart Phone; Serial: SAR1

Communication System: UID 0, LTE-TDD (SC-FDMA, 20MHz, QPSK/16-QAM) (0); Frequency: 2545 MHz; Duty Cycle: 1:1.57943

Medium parameters used (interpolated): $f = 2545$ MHz; $\sigma = 2.127$ S/m; $\epsilon_r = 50.561$; $\rho = 1000$ kg/m³

Phantom section: Flat Section

DASY Configuration:

- Probe: EX3DV4 - SN3744; ConvF(7.35, 7.35, 7.35) @ 2545 MHz; Calibrated: 2018-7-25
- Sensor-Surface: 1.4mm (Mechanical Surface Detection), $z = 1.0, 31.0$
- Electronics: DAE3 Sn393; Calibrated: 2018-8-14
- Phantom: SAM2; Type: SAM; Serial: 1474
- DASY52 52.10.1(1476); SEMCAD X 14.6.11(7439)

Configuration/Body/Area Scan (10x16x1): Measurement grid: $dx=12$ mm, $dy=12$ mm

[Info: Interpolated medium parameters used for SAR evaluation.](#)

Maximum value of SAR (measured) = 0.339 W/kg

Configuration/Body/Zoom Scan (7x7x7)/Cube 0: Measurement grid: $dx=5$ mm, $dy=5$ mm, $dz=5$ mm

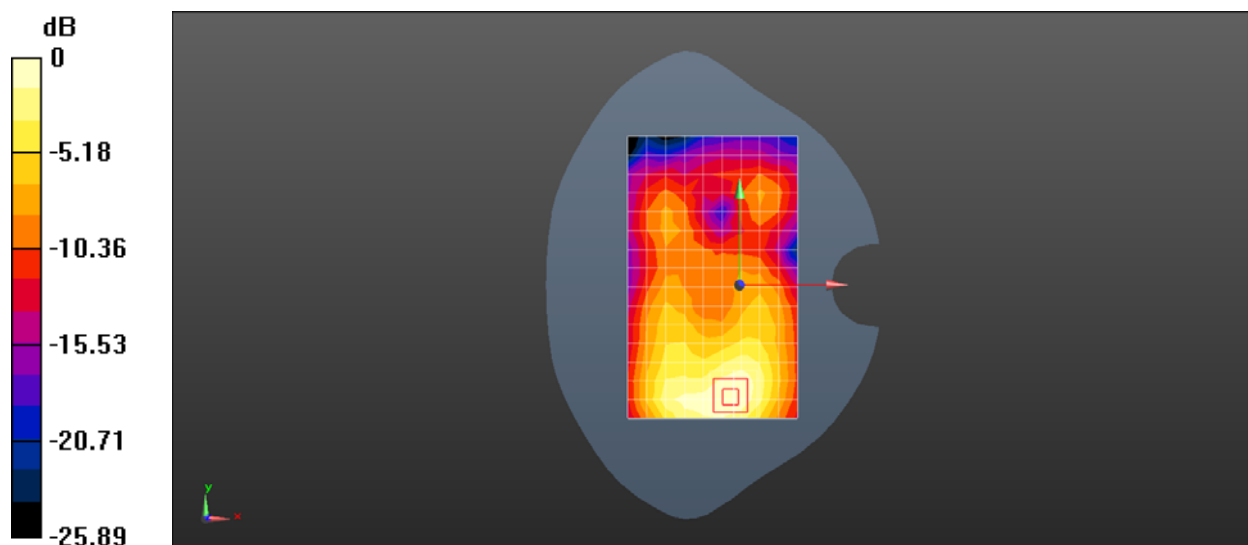
Reference Value = 4.035 V/m; Power Drift = 0.00 dB

Peak SAR (extrapolated) = 0.432 W/kg

SAR(1 g) = 0.233 W/kg; SAR(10 g) = 0.128 W/kg

[Info: Interpolated medium parameters used for SAR evaluation.](#)

Maximum value of SAR (measured) = 0.351 W/kg



0 dB = 0.339 W/kg = -4.70 dBW/kg

Test Laboratory: HUAWEI SAR/HAC Lab

ELE-L04 LTE Band 41 20M QPSK 50%RB 0 Offset 40140CH Top Side 10mm-Second Antenna

DUT: ELE-L04; Type: Smart Phone; Serial: SAR1

Communication System: UID 0, LTE-TDD (SC-FDMA, 20MHz, QPSK/16-QAM) (0); Frequency: 2545 MHz; Duty Cycle: 1:1.57943

Medium parameters used (interpolated): $f = 2545$ MHz; $\sigma = 2.149$ S/m; $\epsilon_r = 50.644$; $\rho = 1000$ kg/m³

Phantom section: Flat Section

DASY Configuration:

- Probe: EX3DV4 - SN3744; ConvF(7.35, 7.35, 7.35) @ 2545 MHz; Calibrated: 2018-7-25
- Sensor-Surface: 1.4mm (Mechanical Surface Detection), $z = 1.0, 31.0$
- Electronics: DAE3 Sn393; Calibrated: 2018-8-14
- Phantom: SAM2; Type: SAM; Serial: 1474
- DASY52 52.10.1(1476); SEMCAD X 14.6.11(7439)

Configuration/Body/Area Scan (5x11x1): Measurement grid: $dx=12$ mm, $dy=12$ mm

[Info: Interpolated medium parameters used for SAR evaluation.](#)

Maximum value of SAR (measured) = 0.548 W/kg

Configuration/Body/Zoom Scan (7x7x7)/Cube 0: Measurement grid: $dx=5$ mm, $dy=5$ mm, $dz=5$ mm

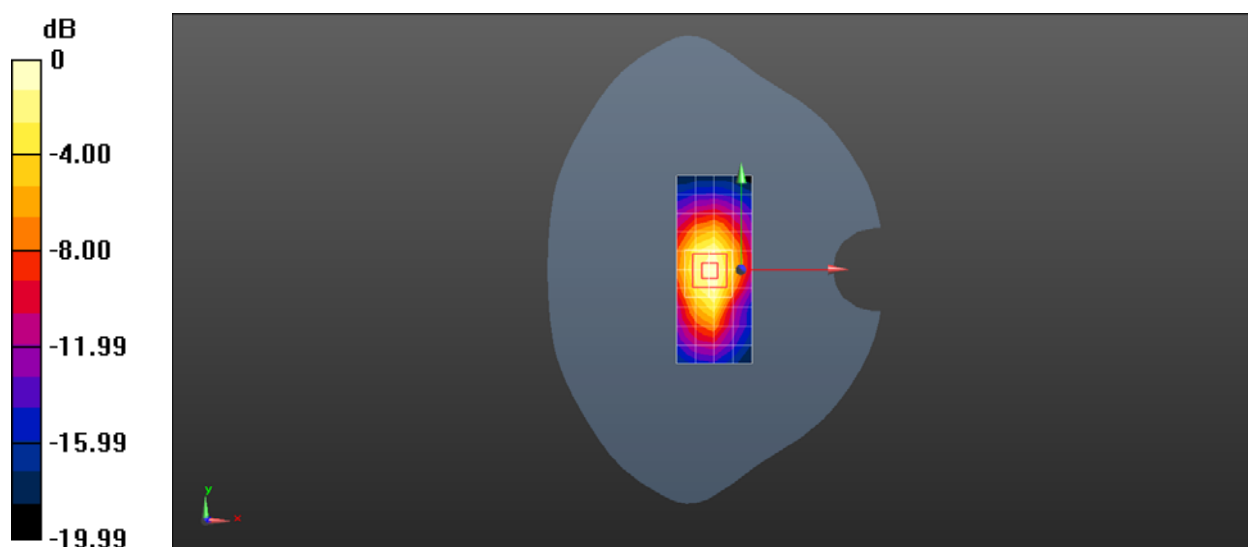
Reference Value = 16.74 V/m; Power Drift = -0.04 dB

Peak SAR (extrapolated) = 0.724 W/kg

SAR(1 g) = 0.362 W/kg; SAR(10 g) = 0.182 W/kg

[Info: Interpolated medium parameters used for SAR evaluation.](#)

Maximum value of SAR (measured) = 0.579 W/kg



0 dB = 0.548 W/kg = -2.61 dBW/kg

Test Laboratory: HUAWEI SAR/HAC Lab

ELE-L04 LTE Band 41 20M QPSK 50%RB 0 Offset 41140CH Bottom Side 10mm- Main Antenna

DUT: ELE-L04; Type: Smart Phone; Serial: SAR1

Communication System: UID 0, LTE-TDD (SC-FDMA, 20MHz, QPSK/16-QAM) (0); Frequency: 2645 MHz; Duty Cycle: 1:1.57943

Medium parameters used (interpolated): $f = 2645$ MHz; $\sigma = 2.242$ S/m; $\epsilon_r = 50.407$; $\rho = 1000$ kg/m³

Phantom section: Flat Section

DASY Configuration:

- Probe: EX3DV4 - SN3744; ConvF(7.35, 7.35, 7.35) @ 2645 MHz; Calibrated: 2018-7-25
- Sensor-Surface: 1.4mm (Mechanical Surface Detection), $z = 1.0, 31.0$
- Electronics: DAE3 Sn393; Calibrated: 2018-8-14
- Phantom: SAM2; Type: SAM; Serial: 1474
- DASY52 52.10.1(1476); SEMCAD X 14.6.11(7439)

Configuration/Body/Area Scan (5x11x1): Measurement grid: $dx=12$ mm, $dy=12$ mm

[Info: Interpolated medium parameters used for SAR evaluation.](#)

Maximum value of SAR (measured) = 0.596 W/kg

Configuration/Body/Zoom Scan (7x7x7)/Cube 0: Measurement grid: $dx=5$ mm, $dy=5$ mm, $dz=5$ mm

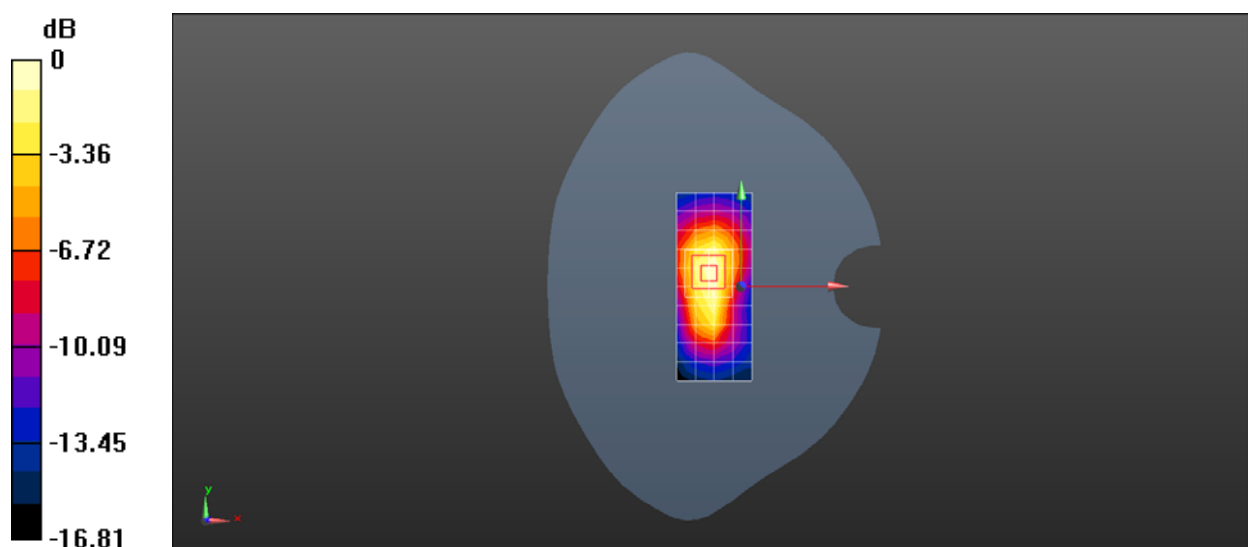
Reference Value = 16.05 V/m; Power Drift = 0.11 dB

Peak SAR (extrapolated) = 0.816 W/kg

SAR(1 g) = 0.395 W/kg; SAR(10 g) = 0.193 W/kg

[Info: Interpolated medium parameters used for SAR evaluation.](#)

Maximum value of SAR (measured) = 0.652 W/kg



0 dB = 0.596 W/kg = -2.25 dBW/kg

Test Laboratory: HUAWEI SAR/HAC Lab

ELE-L04 LTE Band 66 20M QPSK 50%RB 50 Offset 132572CH Right Tilt with Battery2-Second Antenna

DUT: ELE-L04; Type: Smart Phone; Serial: SAR6

Communication System: UID 0, LTE-FDD (SC-FDMA, 20MHz, QPSK/16-QAM) (0); Frequency: 1770 MHz; Duty Cycle: 1:1

Medium parameters used: $f = 1770$ MHz; $\sigma = 1.389$ S/m; $\epsilon_r = 39.068$; $\rho = 1000$ kg/m³

Phantom section: Right Section

DASY Configuration:

- Probe: EX3DV4 - SN3736; ConvF(8.32, 8.32, 8.32) @ 1770 MHz; Calibrated: 2018-4-27
- Sensor-Surface: 1.4mm (Mechanical Surface Detection), $z = 1.0, 31.0$
- Electronics: DAE4 Sn851; Calibrated: 2018-7-18
- Phantom: SAM9; Type: SAM; Serial: 1958
- DASY52 52.10.1(1476); SEMCAD X 14.6.11(7439)

Configuration/Head/Area Scan (9x14x1): Measurement grid: $dx=15$ mm, $dy=15$ mm

Maximum value of SAR (measured) = 0.230 W/kg

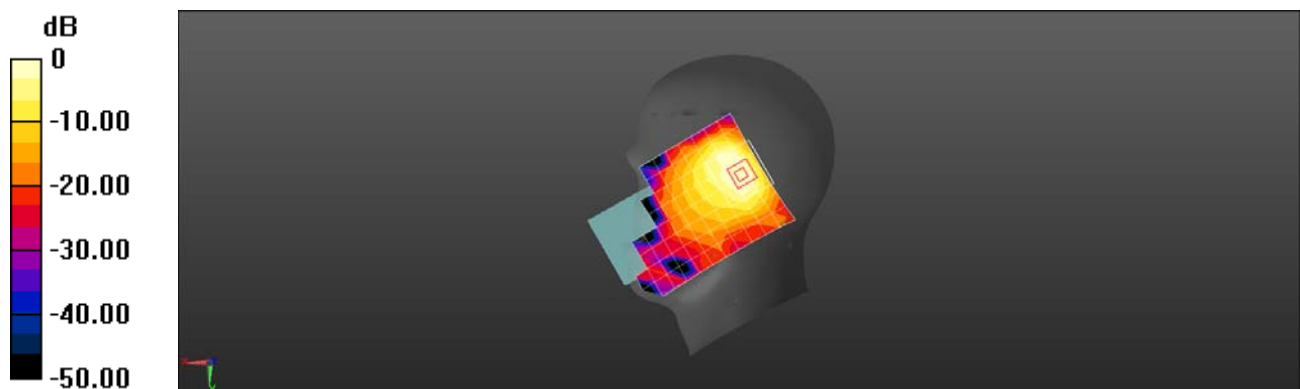
Configuration/Head/Zoom Scan (7x7x7)/Cube 0: Measurement grid: $dx=8$ mm, $dy=8$ mm, $dz=5$ mm

Reference Value = 13.55 V/m; Power Drift = -0.01 dB

Peak SAR (extrapolated) = 0.495 W/kg

SAR(1 g) = 0.262 W/kg; SAR(10 g) = 0.128 W/kg

Maximum value of SAR (measured) = 0.418 W/kg



0 dB = 0.230 W/kg = -6.39 dBW/kg

Test Laboratory: HUAWEI SAR/HAC Lab

ELE-L04 LTE Band 66 20M QPSK 1RB 0 Offset 132322CH Left Cheek with Battery2-Main Antenna

DUT: ELE-L04; Type: Smart Phone; Serial: SAR6

Communication System: UID 0, LTE-FDD (SC-FDMA, 20MHz, QPSK/16-QAM) (0); Frequency: 1745 MHz; Duty Cycle: 1:1

Medium parameters used (interpolated): $f = 1745$ MHz; $\sigma = 1.375$ S/m; $\epsilon_r = 39.115$; $\rho = 1000$ kg/m³

Phantom section: Left Section

DASY Configuration:

- Probe: EX3DV4 - SN3736; ConvF(8.32, 8.32, 8.32) @ 1745 MHz; Calibrated: 2018-4-27
- Sensor-Surface: 1.4mm (Mechanical Surface Detection), $z = 1.0, 31.0$
- Electronics: DAE4 Sn851; Calibrated: 2018-7-18
- Phantom: SAM9; Type: SAM; Serial: 1958
- DASY52 52.10.1(1476); SEMCAD X 14.6.11(7439)

Configuration/Head/Area Scan (9x13x1): Measurement grid: $dx=15$ mm, $dy=15$ mm

[Info: Interpolated medium parameters used for SAR evaluation.](#)

Maximum value of SAR (measured) = 0.188 W/kg

Configuration/Head/Zoom Scan (7x7x7)/Cube 0: Measurement grid: $dx=8$ mm, $dy=8$ mm, $dz=5$ mm

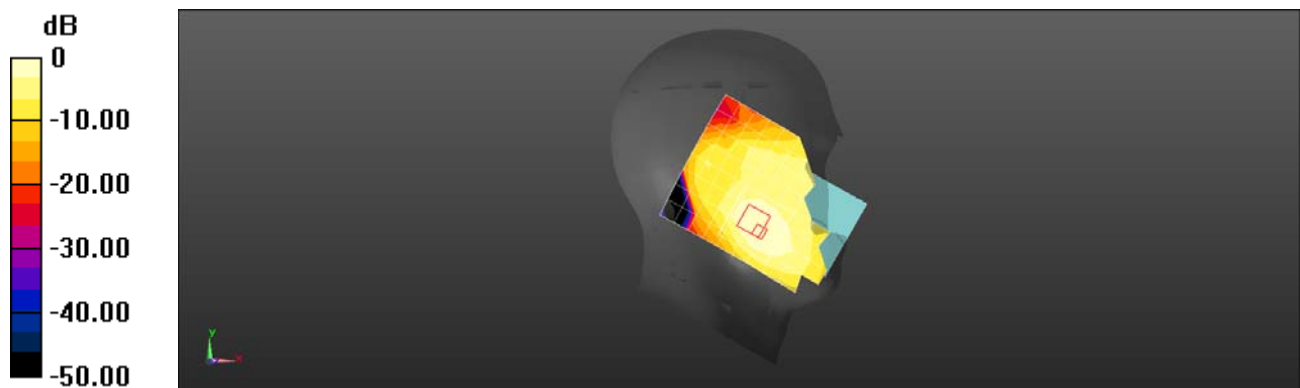
Reference Value = 6.339 V/m; Power Drift = 0.10 dB

Peak SAR (extrapolated) = 0.332 W/kg

SAR(1 g) = 0.152 W/kg; SAR(10 g) = 0.089 W/kg

[Info: Interpolated medium parameters used for SAR evaluation.](#)

Maximum value of SAR (measured) = 0.196 W/kg



0 dB = 0.196 W/kg = -7.08 dBW/kg

Test Laboratory: HUAWEI SAR/HAC Lab

ELE-L04 LTE Band 66 20M QPSK 50%RB 0 Offset 132322CH Back Side 15mm with Battery2-Second Antenna

DUT: ELE-L04; Type: Smart Phone; Serial: SAR3

Communication System: UID 0, LTE-FDD (SC-FDMA, 20MHz, QPSK/16-QAM) (0); Frequency: 1745 MHz; Duty Cycle: 1:1

Medium parameters used (interpolated): $f = 1745$ MHz; $\sigma = 1.522$ S/m; $\epsilon_r = 51.102$; $\rho = 1000$ kg/m³

Phantom section: Flat Section

DASY Configuration:

- Probe: EX3DV4 - SN7505; ConvF(8.23, 8.23, 8.23) @ 1745 MHz; Calibrated: 2018-6-12
- Sensor-Surface: 1.4mm (Mechanical Surface Detection), $z = 1.0, 31.0$
- Electronics: DAE4 Sn852; Calibrated: 2018-4-23
- Phantom: SAM5; Type: SAM; Serial: 1892
- DASY52 52.10.1(1476); SEMCAD X 14.6.11(7439)

Configuration/Body/Area Scan (8x13x1): Measurement grid: $dx=15$ mm, $dy=15$ mm

[Info: Interpolated medium parameters used for SAR evaluation.](#)

Maximum value of SAR (measured) = 0.261 W/kg

Configuration/Body/Zoom Scan (5x5x7)/Cube 0: Measurement grid: $dx=8$ mm, $dy=8$ mm, $dz=5$ mm

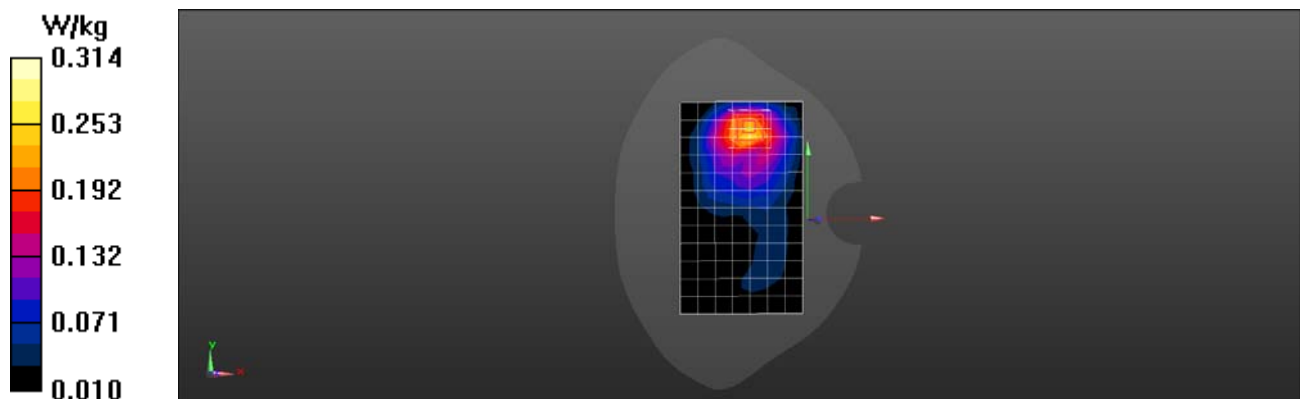
Reference Value = 4.633 V/m; Power Drift = -0.12 dB

Peak SAR (extrapolated) = 0.338 W/kg

SAR(1 g) = 0.243 W/kg; SAR(10 g) = 0.149 W/kg

[Info: Interpolated medium parameters used for SAR evaluation.](#)

Maximum value of SAR (measured) = 0.314 W/kg



Test Laboratory: HUAWEI SAR/HAC Lab

ELE-L04 LTE Band 66 20M QPSK 1RB 0 Offset 132322CH Back Side 15mm-Main Antenna

DUT: ELE-L04; Type: Smart Phone; Serial: SAR3

Communication System: UID 0, LTE-FDD (SC-FDMA, 20MHz, QPSK/16-QAM) (0); Frequency: 1745 MHz; Duty Cycle: 1:1

Medium parameters used (interpolated): $f = 1745$ MHz; $\sigma = 1.522$ S/m; $\epsilon_r = 51.102$; $\rho = 1000$ kg/m³

Phantom section: Flat Section

DASY Configuration:

- Probe: EX3DV4 - SN7505; ConvF(8.23, 8.23, 8.23) @ 1745 MHz; Calibrated: 2018-6-12
- Sensor-Surface: 1.4mm (Mechanical Surface Detection), $z = 1.0, 31.0$
- Electronics: DAE4 Sn852; Calibrated: 2018-4-23
- Phantom: SAM5; Type: SAM; Serial: 1892
- DASY52 52.10.1(1476); SEMCAD X 14.6.11(7439)

Configuration/Body/Area Scan (8x14x1): Measurement grid: $dx=15$ mm, $dy=15$ mm

[Info: Interpolated medium parameters used for SAR evaluation.](#)

Maximum value of SAR (measured) = 0.419 W/kg

Configuration/Body/Zoom Scan (6x6x7)/Cube 0: Measurement grid: $dx=8$ mm, $dy=8$ mm, $dz=5$ mm

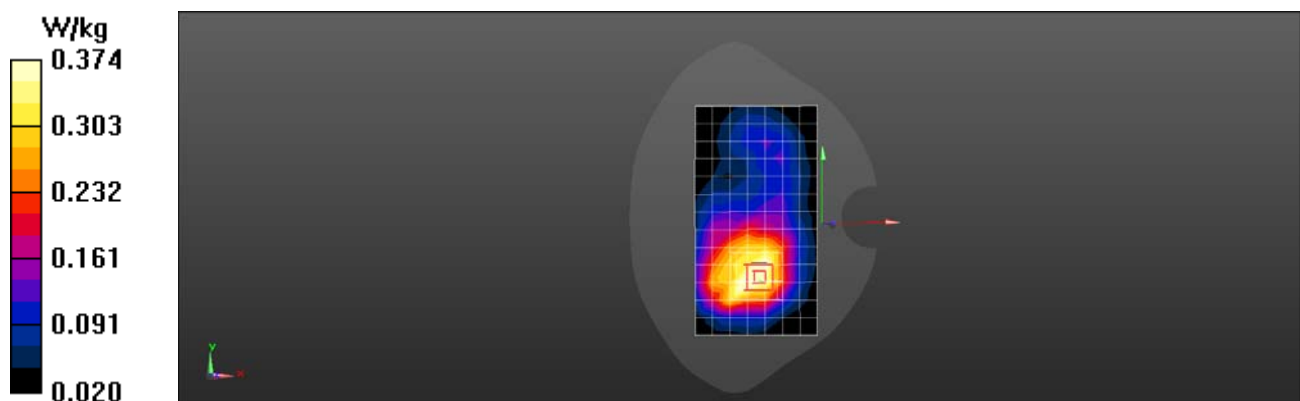
Reference Value = 9.989 V/m; Power Drift = -0.06 dB

Peak SAR (extrapolated) = 0.397 W/kg

SAR(1 g) = 0.314 W/kg; SAR(10 g) = 0.218 W/kg

[Info: Interpolated medium parameters used for SAR evaluation.](#)

Maximum value of SAR (measured) = 0.374 W/kg



Test Laboratory: HUAWEI SAR/HAC Lab

ELE-L04 LTE Band 66 20M QPSK 1RB 99 Offset 132572CH Top Side 10mm-Second Antenna

DUT: ELE-L04; Type: Smart Phone; Serial: SAR3

Communication System: UID 0, LTE-FDD (SC-FDMA, 20MHz, QPSK/16-QAM) (0); Frequency: 1770 MHz; Duty Cycle: 1:1

Medium parameters used: $f = 1770$ MHz; $\sigma = 1.544$ S/m; $\epsilon_r = 51.066$; $\rho = 1000$ kg/m³

Phantom section: Flat Section

DASY Configuration:

- Probe: EX3DV4 - SN7505; ConvF(8.23, 8.23, 8.23) @ 1770 MHz; Calibrated: 2018-6-12
- Sensor-Surface: 1.4mm (Mechanical Surface Detection), $z = 1.0, 31.0$
- Electronics: DAE4 Sn852; Calibrated: 2018-4-23
- Phantom: SAM5; Type: SAM; Serial: 1892
- DASY52 52.10.1(1476); SEMCAD X 14.6.11(7439)

Configuration/Body/Area Scan (5x9x1): Measurement grid: $dx=15$ mm, $dy=15$ mm

Maximum value of SAR (measured) = 0.408 W/kg

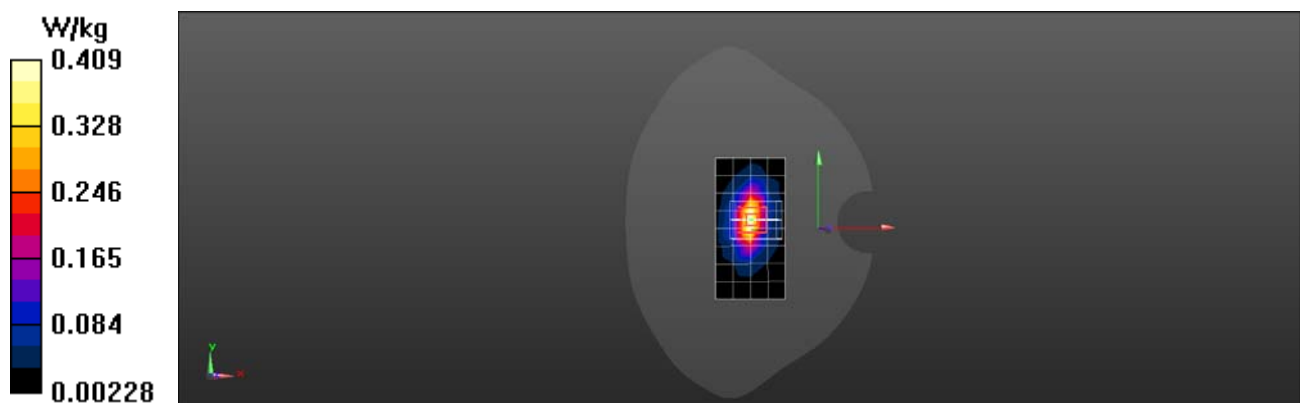
Configuration/Body/Zoom Scan (6x5x7)/Cube 0: Measurement grid: $dx=8$ mm, $dy=8$ mm, $dz=5$ mm

Reference Value = 17.39 V/m; Power Drift = -0.03 dB

Peak SAR (extrapolated) = 0.466 W/kg

SAR(1 g) = 0.291 W/kg; SAR(10 g) = 0.157 W/kg

Maximum value of SAR (measured) = 0.409 W/kg



Test Laboratory: HUAWEI SAR/HAC Lab

ELE-L04 LTE Band 66 20M QPSK 1RB 0 Offset 132322CH Bottom Side 10mm- Main Antenna

DUT: ELE-L04; Type: Smart Phone; Serial: SAR3

Communication System: UID 0, LTE-FDD (SC-FDMA, 20MHz, QPSK/16-QAM) (0); Frequency: 1745 MHz; Duty Cycle: 1:1

Medium parameters used (interpolated): $f = 1745$ MHz; $\sigma = 1.522$ S/m; $\epsilon_r = 51.102$; $\rho = 1000$ kg/m³

Phantom section: Flat Section

DASY Configuration:

- Probe: EX3DV4 - SN7505; ConvF(8.23, 8.23, 8.23) @ 1745 MHz; Calibrated: 2018-6-12
- Sensor-Surface: 1.4mm (Mechanical Surface Detection), $z = 1.0, 31.0$
- Electronics: DAE4 Sn852; Calibrated: 2018-4-23
- Phantom: SAM5; Type: SAM; Serial: 1892
- DASY52 52.10.1(1476); SEMCAD X 14.6.11(7439)

Configuration/Body/Area Scan (5x9x1): Measurement grid: $dx=15$ mm, $dy=15$ mm

[Info: Interpolated medium parameters used for SAR evaluation.](#)

Maximum value of SAR (measured) = 0.403 W/kg

Configuration/Body/Zoom Scan (5x5x7)/Cube 0: Measurement grid: $dx=8$ mm, $dy=8$ mm, $dz=5$ mm

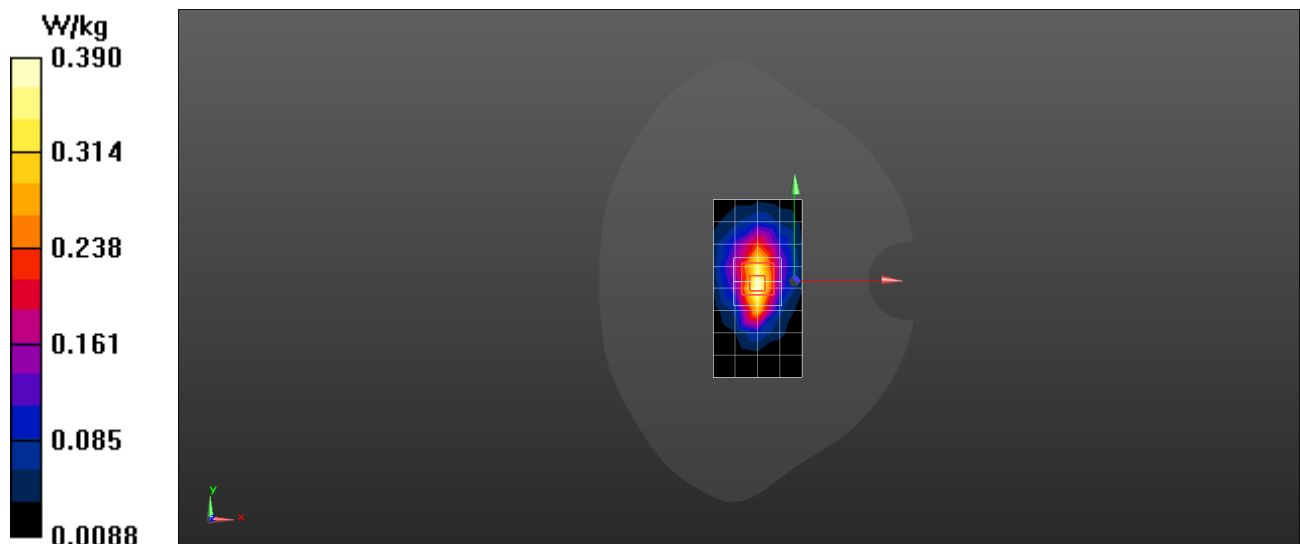
Reference Value = 16.89 V/m; Power Drift = -0.16 dB

Peak SAR (extrapolated) = 0.451 W/kg

SAR(1 g) = 0.275 W/kg; SAR(10 g) = 0.160 W/kg

[Info: Interpolated medium parameters used for SAR evaluation.](#)

Maximum value of SAR (measured) = 0.390 W/kg



Test Laboratory: HUAWEI SAR/HAC Lab

ELE-L04 WiFi 2.4G 802.11b 11CH Left Cheek with Battery2-Core0

DUT: ELE-L04; Type: Smart Phone; Serial: SAR5

Communication System: UID 0, WiFi(802.11a/b/g/n) (0); Frequency: 2462 MHz;Duty Cycle: 1:1
Medium parameters used: $f = 2462$ MHz; $\sigma = 1.87$ S/m; $\epsilon_r = 39.25$; $\rho = 1000$ kg/m³

Phantom section: Left Section

DASY Configuration:

- Probe: EX3DV4 - SN7489; ConvF(8.04, 8.04, 8.04) @ 2462 MHz; Calibrated: 2018-1-9
- Sensor-Surface: 1.4mm (Mechanical Surface Detection), $z = 1.0, 31.0$
- Electronics: DAE4 Sn1531; Calibrated: 2018-1-3
- Phantom: SAM8; Type: SAM; Serial: 1940
- DASY52 52.10.1(1476); SEMCAD X 14.6.11(7439)

Configuration/Head/Area Scan (10x16x1): Measurement grid: $dx=12$ mm, $dy=12$ mm
Maximum value of SAR (measured) = 0.604 W/kg

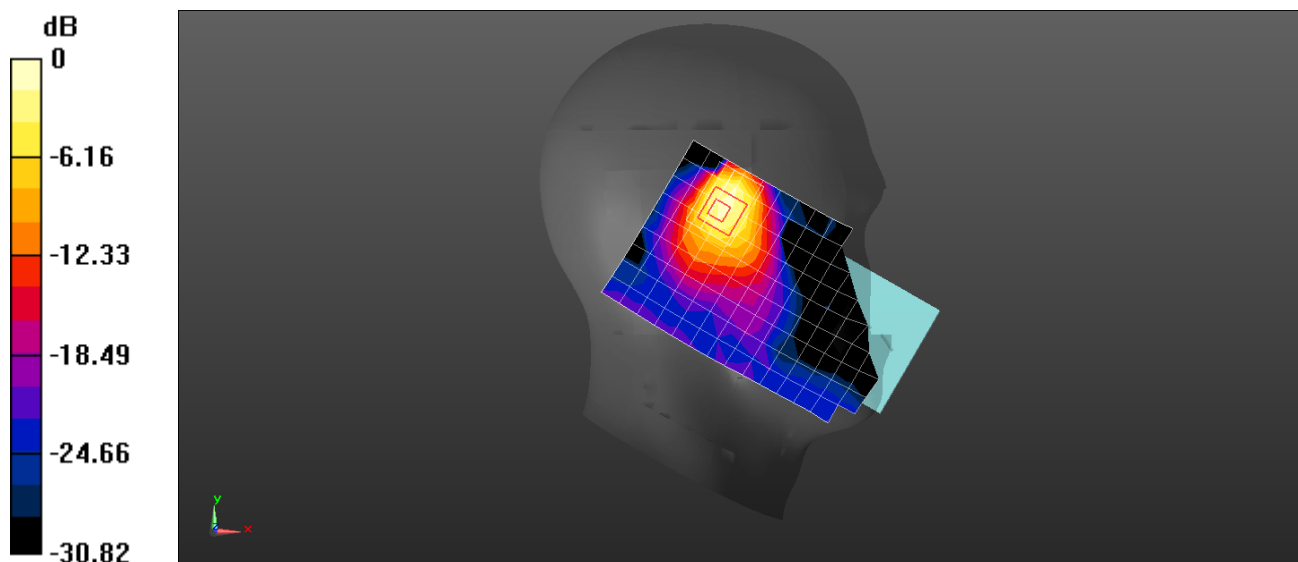
Configuration/Head/Zoom Scan (9x7x7)/Cube 0: Measurement grid: $dx=5$ mm, $dy=5$ mm, $dz=5$ mm

Reference Value = 6.344 V/m; Power Drift = 0.11 dB

Peak SAR (extrapolated) = 0.926 W/kg

SAR(1 g) = 0.412 W/kg; SAR(10 g) = 0.167 W/kg

Maximum value of SAR (measured) = 0.688 W/kg



0 dB = 0.688 W/kg = -1.62 dBW/kg

Test Laboratory: HUAWEI SAR/HAC Lab

ELE-L04 WiFi 2.4G 802.11b 1CH Right Cheek-Core1

DUT: ELE-L04; Type: Smart Phone; Serial: SAR5

Communication System: UID 0, WiFi(802.11a/b/g/n) (0); Frequency: 2412 MHz;Duty Cycle: 1:1
Medium parameters used: $f = 2412$ MHz; $\sigma = 1.783$ S/m; $\epsilon_r = 37.669$; $\rho = 1000$ kg/m³

Phantom section: Right Section

DASY Configuration:

- Probe: EX3DV4 - SN7489; ConvF(8.04, 8.04, 8.04) @ 2412 MHz; Calibrated: 2018-1-9
- Sensor-Surface: 1.4mm (Mechanical Surface Detection), $z = 1.0, 31.0$
- Electronics: DAE4 Sn1531; Calibrated: 2018-1-3
- Phantom: SAM8; Type: SAM; Serial: 1940
- DASY52 52.10.1(1476); SEMCAD X 14.6.11(7439)

Configuration/Head/Area Scan (10x16x1): Measurement grid: $dx=12$ mm, $dy=12$ mm
Maximum value of SAR (measured) = 0.107 W/kg

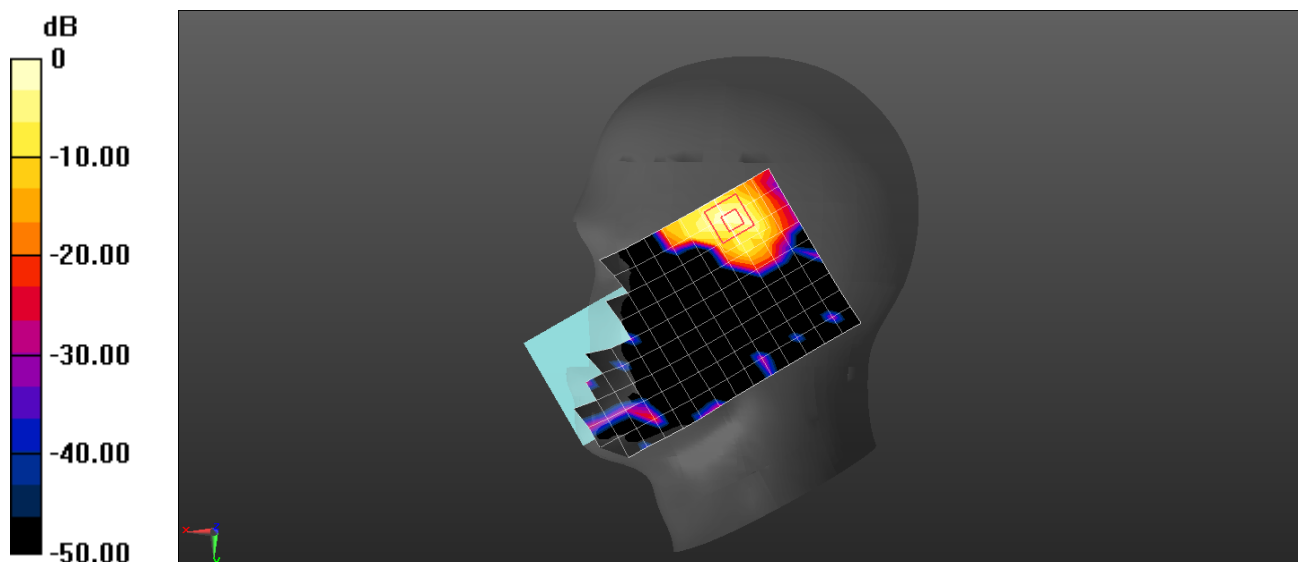
Configuration/Head/Zoom Scan (7x7x7)/Cube 0: Measurement grid: $dx=5$ mm, $dy=5$ mm, $dz=5$ mm

Reference Value = 0 V/m; Power Drift = 0.00 dB

Peak SAR (extrapolated) = 0.175 W/kg

SAR(1 g) = 0.062 W/kg; SAR(10 g) = 0.024 W/kg

Maximum value of SAR (measured) = 0.121 W/kg



0 dB = 0.121 W/kg = -9.17 dBW/kg

Test Laboratory: HUAWEI SAR/HAC Lab

ELE-L04 WiFi 2.4G 802.11b 11CH Back Side 15mm-Core0

DUT: ELE-L04; Type: Smart Phone; Serial: SAR1

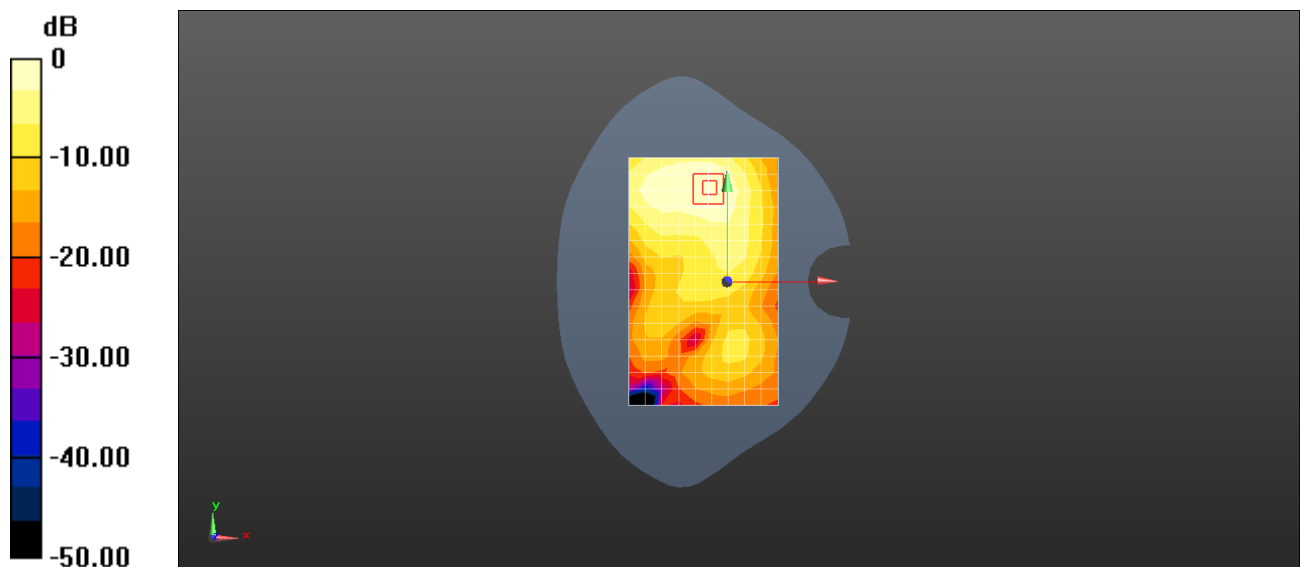
Communication System: UID 0, WiFi(802.11a/b/g/n/ac) (0); Frequency: 2462 MHz; Duty Cycle: 1:1
Medium parameters used: $f = 2462$ MHz; $\sigma = 2.044$ S/m; $\epsilon_r = 50.297$; $\rho = 1000$ kg/m³
Phantom section: Flat Section

DASY Configuration:

- Probe: EX3DV4 - SN3744; ConvF(7.39, 7.39, 7.39) @ 2462 MHz; Calibrated: 2018-7-25
- Sensor-Surface: 1.4mm (Mechanical Surface Detection), $z = 1.0, 31.0$
- Electronics: DAE3 Sn393; Calibrated: 2018-8-14
- Phantom: SAM2; Type: SAM; Serial: 1474
- DASY52 52.10.1(1476); SEMCAD X 14.6.11(7439)

Configuration/Body/Area Scan (10x16x1): Measurement grid: $dx=12$ mm, $dy=12$ mm
Maximum value of SAR (measured) = 0.256 W/kg

Configuration/Body/Zoom Scan (7x7x7)/Cube 0: Measurement grid: $dx=5$ mm, $dy=5$ mm, $dz=5$ mm
Reference Value = 4.709 V/m; Power Drift = -0.11 dB
Peak SAR (extrapolated) = 0.316 W/kg
SAR(1 g) = 0.174 W/kg; SAR(10 g) = 0.099 W/kg
Maximum value of SAR (measured) = 0.259 W/kg



0 dB = 0.256 W/kg = -5.92 dBW/kg

Test Laboratory: HUAWEI SAR/HAC Lab

ELE-L04 WiFi 2.4G 802.11b 1CH Back Side 15mm-Core1

DUT: ELE-L04; Type: Smart Phone; Serial: SAR1

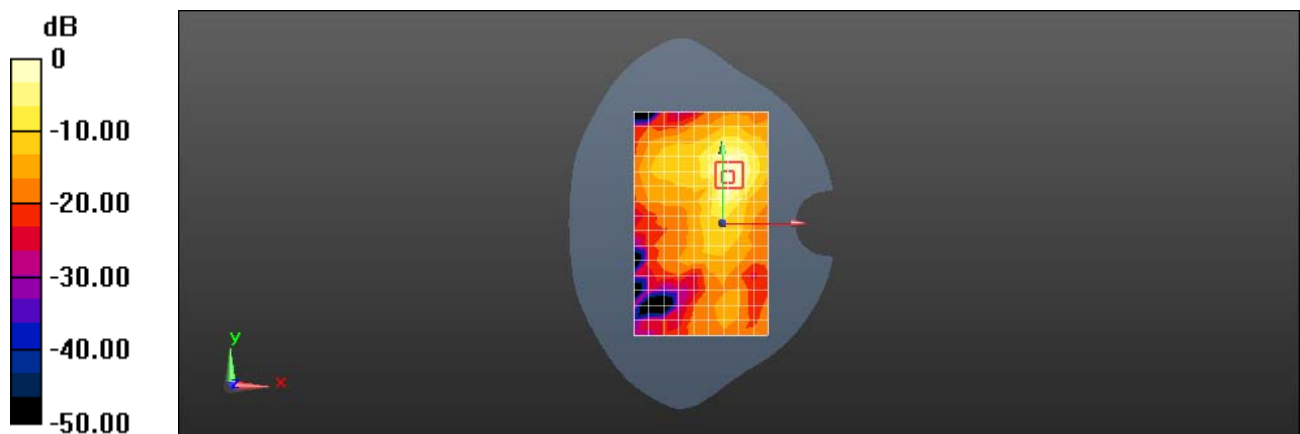
Communication System: UID 0, WiFi(802.11a/b/g/n/ac) (0); Frequency: 2412 MHz; Duty Cycle: 1:1
Medium parameters used: $f = 2412$ MHz; $\sigma = 1.999$ S/m; $\epsilon_r = 50.341$; $\rho = 1000$ kg/m³
Phantom section: Flat Section

DASY Configuration:

- Probe: EX3DV4 - SN3744; ConvF(7.39, 7.39, 7.39) @ 2412 MHz; Calibrated: 2018-7-25
- Sensor-Surface: 1.4mm (Mechanical Surface Detection), $z = -9.0, 31.0$
- Electronics: DAE3 Sn393; Calibrated: 2018-8-14
- Phantom: SAM2; Type: SAM; Serial: 1474
- DASY52 52.10.1(1476); SEMCAD X 14.6.11(7439)

Configuration/Body/Area Scan (10x16x1): Measurement grid: $dx=12$ mm, $dy=12$ mm
Maximum value of SAR (measured) = 0.179 W/kg

Configuration/Body/Zoom Scan (7x8x7)/Cube 0: Measurement grid: $dx=5$ mm, $dy=5$ mm, $dz=5$ mm
Reference Value = 2.334 V/m; Power Drift = 0.03 dB
Peak SAR (extrapolated) = 0.288 W/kg
SAR(1 g) = 0.138 W/kg; SAR(10 g) = 0.063 W/kg
Maximum value of SAR (measured) = 0.228 W/kg



0 dB = 0.179 W/kg = -7.47 dBW/kg

Test Laboratory: HUAWEI SAR/HAC Lab

ELE-L04 WiFi 2.4G 802.11b 11CH Top Side 10mm-Core0

DUT: ELE-L04; Type: Smart Phone; Serial: SAR1

Communication System: UID 0, WiFi(802.11a/b/g/n/ac) (0); Frequency: 2462 MHz; Duty Cycle: 1:1
Medium parameters used: $f = 2462$ MHz; $\sigma = 2.044$ S/m; $\epsilon_r = 50.297$; $\rho = 1000$ kg/m³
Phantom section: Flat Section

DASY Configuration:

- Probe: EX3DV4 - SN3744; ConvF(7.39, 7.39, 7.39) @ 2462 MHz; Calibrated: 2018-7-25
- Sensor-Surface: 1.4mm (Mechanical Surface Detection), $z = 1.0, 31.0$
- Electronics: DAE3 Sn393; Calibrated: 2018-8-14
- Phantom: SAM2; Type: SAM; Serial: 1474
- DASY52 52.10.1(1476); SEMCAD X 14.6.11(7439)

Configuration/Body/Area Scan (6x11x1): Measurement grid: $dx=12$ mm, $dy=12$ mm

Maximum value of SAR (measured) = 0.544 W/kg

Configuration/Body/Zoom Scan (7x7x7)/Cube 0: Measurement grid: $dx=5$ mm, $dy=5$ mm, $dz=5$ mm

Reference Value = 14.82 V/m; Power Drift = 0.16 dB

Peak SAR (extrapolated) = 0.690 W/kg

SAR(1 g) = 0.349 W/kg; SAR(10 g) = 0.185 W/kg

Maximum value of SAR (measured) = 0.550 W/kg

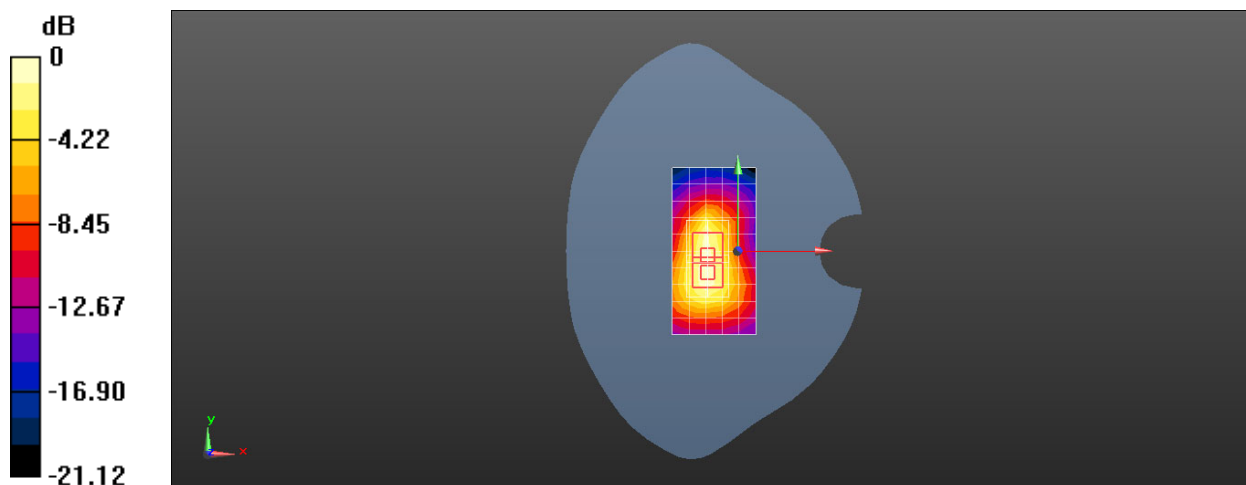
Configuration/Body/Zoom Scan (7x7x7)/Cube 1: Measurement grid: $dx=5$ mm, $dy=5$ mm, $dz=5$ mm

Reference Value = 14.82 V/m; Power Drift = 0.16 dB

Peak SAR (extrapolated) = 0.654 W/kg

SAR(1 g) = 0.304 W/kg; SAR(10 g) = 0.152 W/kg

Maximum value of SAR (measured) = 0.521 W/kg



0 dB = 0.544 W/kg = -2.64 dBW/kg

Test Laboratory: HUAWEI SAR/HAC Lab

ELE-L04 WiFi 2.4G 802.11b 11CH Left Side 10mm with Battery2-Core1

DUT: ELE-L04; Type: Smart Phone; Serial: SAR1

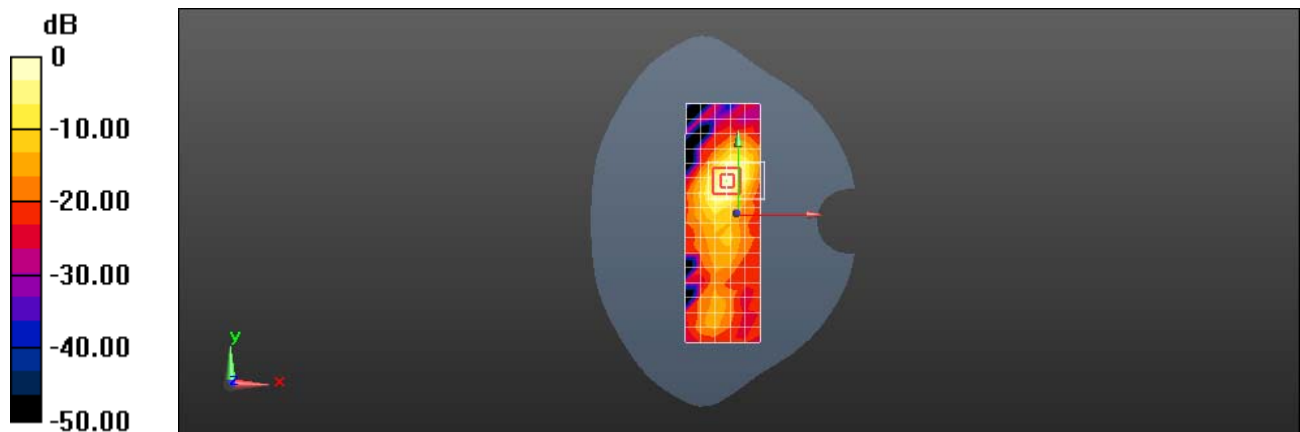
Communication System: UID 0, WiFi(802.11a/b/g/n/ac) (0); Frequency: 2462 MHz; Duty Cycle: 1:1
Medium parameters used: $f = 2462 \text{ MHz}$; $\sigma = 2.044 \text{ S/m}$; $\epsilon_r = 50.297$; $\rho = 1000 \text{ kg/m}^3$
Phantom section: Flat Section

DASY Configuration:

- Probe: EX3DV4 - SN3744; ConvF(7.39, 7.39, 7.39) @ 2462 MHz; Calibrated: 2018-7-25
- Sensor-Surface: 1.4mm (Mechanical Surface Detection), $z = 1.0, 31.0$
- Electronics: DAE3 Sn393; Calibrated: 2018-8-14
- Phantom: SAM2; Type: SAM; Serial: 1474
- DASY52 52.10.1(1476); SEMCAD X 14.6.11(7439)

Configuration/Body/Area Scan (6x17x1): Measurement grid: $dx=12\text{mm}$, $dy=12\text{mm}$
Maximum value of SAR (measured) = 0.274 W/kg

Configuration/Body/Zoom Scan (10x7x7)/Cube 0: Measurement grid: $dx=5\text{mm}$, $dy=5\text{mm}$, $dz=5\text{mm}$
Reference Value = 1.925 V/m; Power Drift = 0.06 dB
Peak SAR (extrapolated) = 0.367 W/kg
SAR(1 g) = 0.165 W/kg; SAR(10 g) = 0.069 W/kg
Maximum value of SAR (measured) = 0.290 W/kg



0 dB = 0.274 W/kg = -5.62 dBW/kg

Test Laboratory: HUAWEI SAR/HAC Lab

ELE-L04 WiFi 2.4G 802.11g 6CH Top Side 0mm-Core0

DUT: ELE-L04; Type: Smart Phone; Serial: SAR1

Communication System: UID 0, WiFi(802.11a/b/g/n/ac) (0); Frequency: 2437 MHz; Duty Cycle: 1:1
Medium parameters used (interpolated): $f = 2437$ MHz; $\sigma = 2.024$ S/m; $\epsilon_r = 52.075$; $\rho = 1000$ kg/m³
Phantom section: Flat Section

DASY Configuration:

- Probe: EX3DV4 - SN3744; ConvF(7.39, 7.39, 7.39) @ 2437 MHz; Calibrated: 2018-7-25
- Sensor-Surface: 1.4mm (Mechanical Surface Detection), $z = 1.0, 31.0$
- Electronics: DAE3 Sn393; Calibrated: 2018-8-14
- Phantom: SAM2; Type: SAM; Serial: 1474
- DASY52 52.10.1(1476); SEMCAD X 14.6.11(7439)

Configuration/Body/Area Scan (5x11x1): Measurement grid: $dx=12$ mm, $dy=12$ mm

[Info: Interpolated medium parameters used for SAR evaluation.](#)

Maximum value of SAR (measured) = 4.61 W/kg

Configuration/Body/Zoom Scan (7x8x7)/Cube 0: Measurement grid: $dx=5$ mm, $dy=5$ mm, $dz=5$ mm

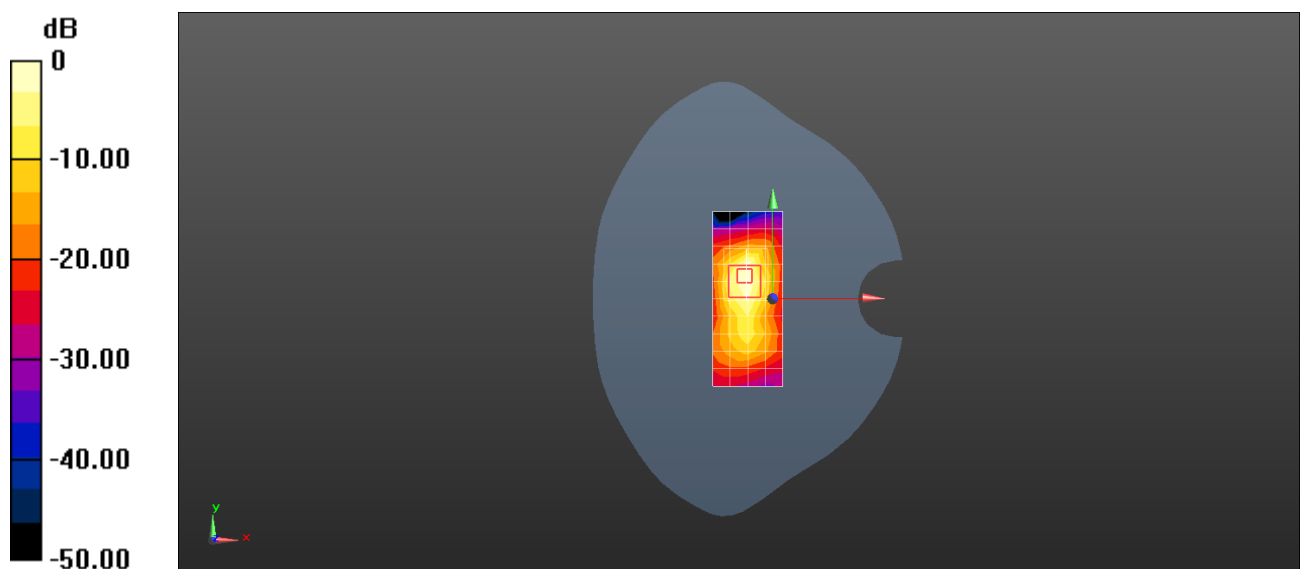
Reference Value = 37.43 V/m; Power Drift = 0.14 dB

Peak SAR (extrapolated) = 9.87 W/kg

SAR(1 g) = 2.88 W/kg; SAR(10 g) = 1.07 W/kg

[Info: Interpolated medium parameters used for SAR evaluation.](#)

Maximum value of SAR (measured) = 6.32 W/kg



0 dB = 4.61 W/kg = 6.64 dBW/kg

Test Laboratory: HUAWEI SAR/HAC Lab

ELE-L04 WiFi 2.4G 802.11g 10CH Back Side 0mm with Battery2-Core1

DUT: ELE-L04; Type: Smart Phone; Serial: SAR1

Communication System: UID 0, WiFi(802.11a/b/g/n/ac) (0); Frequency: 2457 MHz; Duty Cycle: 1:1
Medium parameters used (interpolated): $f = 2457$ MHz; $\sigma = 2.036$ S/m; $\epsilon_r = 52.083$; $\rho = 1000$ kg/m³
Phantom section: Flat Section

DASY Configuration:

- Probe: EX3DV4 - SN3744; ConvF(7.39, 7.39, 7.39) @ 2457 MHz; Calibrated: 2018-7-25
- Sensor-Surface: 1.4mm (Mechanical Surface Detection), $z = 1.0, 31.0$
- Electronics: DAE3 Sn393; Calibrated: 2018-8-14
- Phantom: SAM2; Type: SAM; Serial: 1474
- DASY52 52.10.1(1476); SEMCAD X 14.6.11(7439)

Configuration/Body/Area Scan (10x17x1): Measurement grid: $dx=12$ mm, $dy=12$ mm

[Info: Interpolated medium parameters used for SAR evaluation.](#)

Maximum value of SAR (measured) = 2.42 W/kg

Configuration/Body/Zoom Scan (7x7x7)/Cube 0: Measurement grid: $dx=5$ mm, $dy=5$ mm, $dz=5$ mm

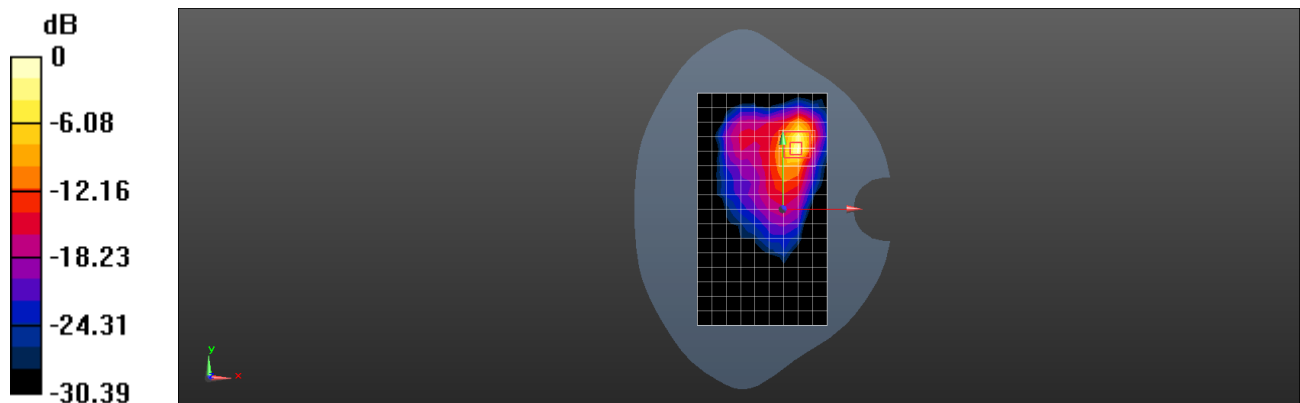
Reference Value = 4.440 V/m; Power Drift = -0.03 dB

Peak SAR (extrapolated) = 4.49 W/kg

SAR(1 g) = 1.26 W/kg; SAR(10 g) = 0.439 W/kg

[Info: Interpolated medium parameters used for SAR evaluation.](#)

Maximum value of SAR (measured) = 3.13 W/kg



0 dB = 3.13 W/kg = 4.96 dBW/kg

Test Laboratory: HUAWEI SAR/HAC Lab

ELE-L04 WiFi 5G 802.11ac 80M 155CH Left Tilt with Battery2-Core0

DUT: ELE-L04; Type: Smart Phone; Serial: SAR3

Communication System: UID 0, WiFi(802.11a/b/g/n) (0); Frequency: 5775 MHz; Duty Cycle: 1:1
Medium parameters used: $f = 5775$ MHz; $\sigma = 5.343$ S/m; $\epsilon_r = 36.778$; $\rho = 1000$ kg/m³

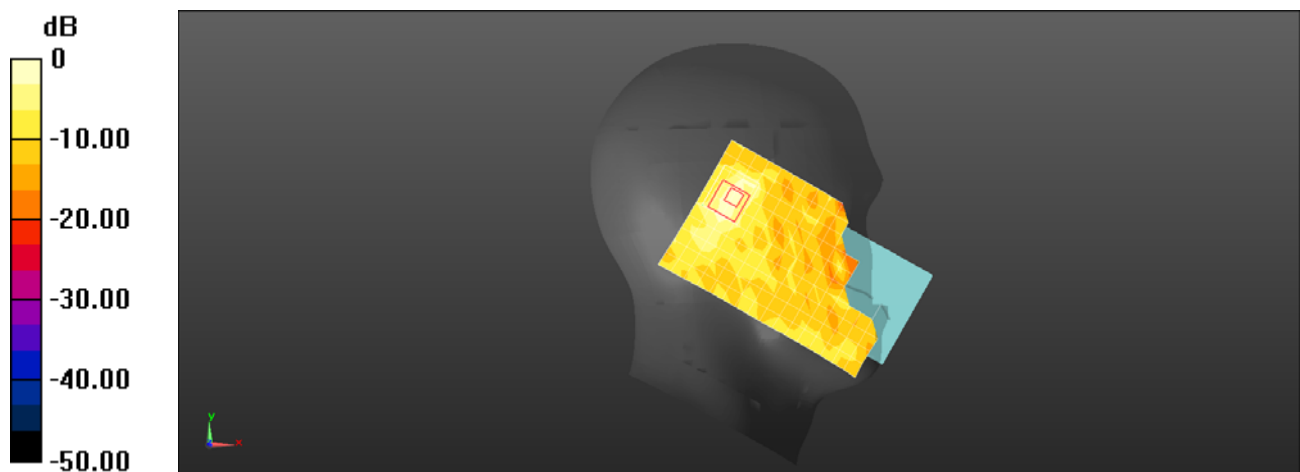
Phantom section: Left Section

DASY Configuration:

- Probe: EX3DV4 - SN7505; ConvF(5.11, 5.11, 5.11) @ 5775 MHz; Calibrated: 2018-6-12
- Sensor-Surface: 1.4mm (Mechanical Surface Detection), $z = 1.0, 25.0$
- Electronics: DAE4 Sn852; Calibrated: 2018-4-23
- Phantom: SAM5; Type: SAM; Serial: 1892
- DASY52 52.10.1(1476); SEMCAD X 14.6.11(7439)

Configuration/Head/Area Scan (11x9x1): Measurement grid: $dx=10$ mm, $dy=10$ mm
Maximum value of SAR (measured) = 0.320 W/kg

Configuration/Head/Zoom Scan (9x8x7)/Cube 0: Measurement grid: $dx=4$ mm, $dy=4$ mm, $dz=1.4$ mm
Reference Value = 2.841 V/m; Power Drift = -0.01 dB
Peak SAR (extrapolated) = 0.633 W/kg
SAR(1 g) = 0.151 W/kg; SAR(10 g) = 0.042 W/kg
Maximum value of SAR (measured) = 0.423 W/kg



0 dB = 0.320 W/kg = -4.95 dBW/kg

Test Laboratory: HUAWEI SAR/HAC Lab

ELE-L04 WiFi 5G 802.11ac 80M 155CH Right Tilt-Core1

DUT: ELE-L04; Type: Smart Phone; Serial: SAR3

Communication System: UID 0, WiFi(802.11a/b/g/n) (0); Frequency: 5775 MHz; Duty Cycle: 1:1
Medium parameters used: $f = 5775$ MHz; $\sigma = 5.343$ S/m; $\epsilon_r = 36.778$; $\rho = 1000$ kg/m³

Phantom section: Right Section

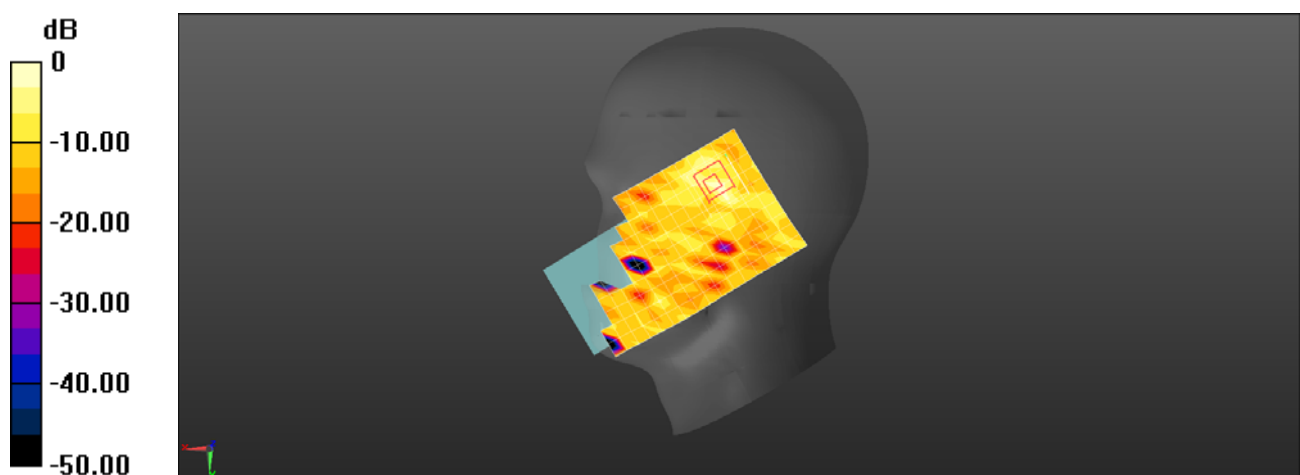
DASY Configuration:

- Probe: EX3DV4 - SN7505; ConvF(5.11, 5.11, 5.11) @ 5775 MHz; Calibrated: 2018-6-12
- Sensor-Surface: 1.4mm (Mechanical Surface Detection), $z = 1.0, 25.0$
- Electronics: DAE4 Sn852; Calibrated: 2018-4-23
- Phantom: SAM5; Type: SAM; Serial: 1892
- DASY52 52.10.1(1476); SEMCAD X 14.6.11(7439)

Configuration/Head/Area Scan (11x20x1): Measurement grid: $dx=10$ mm, $dy=10$ mm
Maximum value of SAR (measured) = 0.125 W/kg

Configuration/Head/Zoom Scan (9x9x7)/Cube 0: Measurement grid: $dx=4$ mm, $dy=4$ mm, $dz=1.4$ mm
Reference Value = 0.6250 V/m; Power Drift = -0.19 dB
Peak SAR (extrapolated) = 0.257 W/kg
SAR(1 g) = 0.030 W/kg; SAR(10 g) = 0.008 W/kg

Maximum value of SAR (measured) = 0.111 W/kg



0 dB = 0.125 W/kg = -9.05 dBW/kg

Test Laboratory: HUAWEI SAR/HAC Lab

ELE-L04 WiFi 5G 802.11a 136CH Back Side 15mm-Core0

DUT: ELE-L04; Type: Smart Phone; Serial: SAR2

Communication System: UID 0, WiFi(802.11a/b/g/n/ac) (0); Frequency: 5680 MHz; Duty Cycle: 1:1
Medium parameters used: $f = 5680$ MHz; $\sigma = 5.869$ S/m; $\epsilon_r = 47.051$; $\rho = 1000$ kg/m³

Phantom section: Flat Section

DASY Configuration:

- Probe: EX3DV4 - SN3820; ConvF(3.84, 3.84, 3.84) @ 5680 MHz; Calibrated: 2018-6-26
- Sensor-Surface: 1.4mm (Mechanical Surface Detection), $z = 1.0, 25.0$
- Electronics: DAE4 Sn913; Calibrated: 2018-5-11
- Phantom: SAM4; Type: SAM; Serial: 1620
- DASY52 52.10.1(1476); SEMCAD X 14.6.11(7439)

Configuration/Body/Area Scan (11x20x1): Measurement grid: $dx=10$ mm, $dy=10$ mm
Maximum value of SAR (measured) = 0.310 W/kg

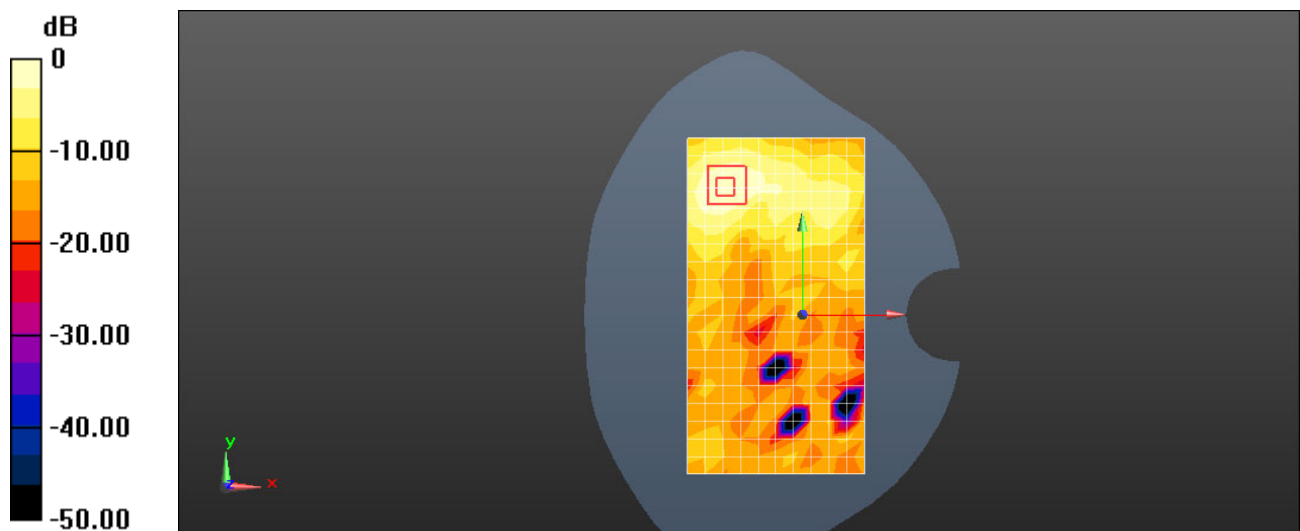
Configuration/Body/Zoom Scan (9x9x7)/Cube 0: Measurement grid: $dx=4$ mm, $dy=4$ mm, $dz=1.4$ mm

Reference Value = 1.062 V/m; Power Drift = 0.14 dB

Peak SAR (extrapolated) = 0.483 W/kg

SAR(1 g) = 0.139 W/kg; SAR(10 g) = 0.050 W/kg

Maximum value of SAR (measured) = 0.312 W/kg



0 dB = 0.312 W/kg = -5.06 dBW/kg

Test Laboratory: HUAWEI SAR/HAC Lab

ELE-L04 WiFi 5G 802.11a 60CH Back Side 15mm with Battery2-Core1

DUT: ELE-L04; Type: Smart Phone; Serial: SAR1

Communication System: UID 0, WiFi(802.11a/b/g/n/ac) (0); Frequency: 5300 MHz; Duty Cycle: 1:1
Medium parameters used (interpolated): $f = 5300$ MHz; $\sigma = 5.454$ S/m; $\epsilon_r = 47.303$; $\rho = 1000$ kg/m³
Phantom section: Flat Section

DASY Configuration:

- Probe: EX3DV4 - SN7505; ConvF(4.84, 4.84, 4.84) @ 5300 MHz; Calibrated: 2018-6-12
- Sensor-Surface: 1.4mm (Mechanical Surface Detection), $z = 1.0, 25.0$
- Electronics: DAE3 Sn393; Calibrated: 2018-8-14
- Phantom: SAM2; Type: SAM; Serial: 1474
- DASY52 52.10.1(1476); SEMCAD X 14.6.11(7439)

Configuration/Body/Area Scan (11x20x1): Measurement grid: $dx=10$ mm, $dy=10$ mm

[Info: Interpolated medium parameters used for SAR evaluation.](#)

Maximum value of SAR (measured) = 0.113 W/kg

Configuration/Body/Zoom Scan (8x9x7)/Cube 0: Measurement grid: $dx=4$ mm, $dy=4$ mm, $dz=1.4$ mm

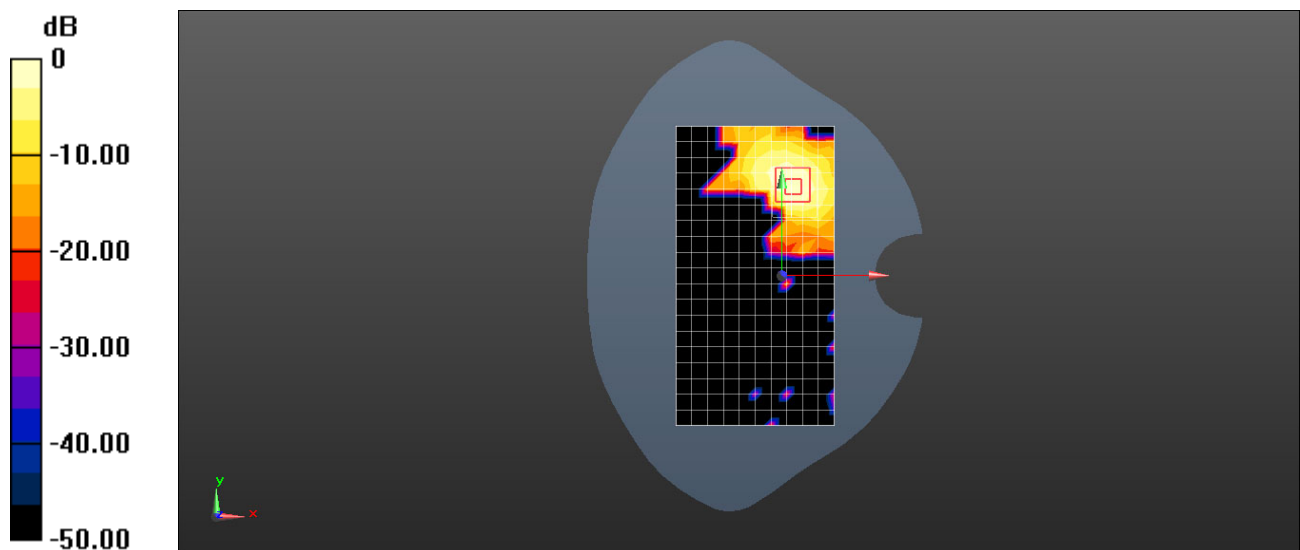
Reference Value = 0 V/m; Power Drift = 0.00 dB

Peak SAR (extrapolated) = 0.162 W/kg

SAR(1 g) = 0.063 W/kg; SAR(10 g) = 0.023 W/kg

[Info: Interpolated medium parameters used for SAR evaluation.](#)

Maximum value of SAR (measured) = 0.123 W/kg



0 dB = 0.113 W/kg = -9.47 dBW/kg

Test Laboratory: HUAWEI SAR/HAC Lab

ELE-L04 WiFi 5G 802.11a 165CH Top Side 10mm with Battery2-Core0

DUT: ELE-L04; Type: Smart Phone; Serial: SAR2

Communication System: UID 0, WiFi(802.11a/b/g/n/ac) (0); Frequency: 5825 MHz; Duty Cycle: 1:1
Medium parameters used (interpolated): $f = 5825$ MHz; $\sigma = 6.1$ S/m; $\epsilon_r = 46.138$; $\rho = 1000$ kg/m³
Phantom section: Flat Section

DASY Configuration:

- Probe: EX3DV4 - SN3820; ConvF(3.94, 3.94, 3.94) @ 5825 MHz; Calibrated: 2018-6-26
- Sensor-Surface: 1.4mm (Mechanical Surface Detection), $z = 1.0, 25.0$
- Electronics: DAE4 Sn913; Calibrated: 2018-5-11
- Phantom: SAM4; Type: SAM; Serial: 1620
- DASY52 52.10.1(1476); SEMCAD X 14.6.11(7439)

Configuration/Body/Area Scan (6x12x1): Measurement grid: $dx=10$ mm, $dy=10$ mm

[Info: Interpolated medium parameters used for SAR evaluation.](#)

Maximum value of SAR (measured) = 0.188 W/kg

Configuration/Body/Zoom Scan (9x9x7)/Cube 0: Measurement grid: $dx=4$ mm, $dy=4$ mm, $dz=1.4$ mm

Reference Value = 4.311 V/m; Power Drift = 0.07 dB

Peak SAR (extrapolated) = 0.417 W/kg

SAR(1 g) = 0.095 W/kg; SAR(10 g) = 0.034 W/kg

[Info: Interpolated medium parameters used for SAR evaluation.](#)

Maximum value of SAR (measured) = 0.226 W/kg

Configuration/Body/Zoom Scan (9x9x7)/Cube 1: Measurement grid: $dx=4$ mm, $dy=4$ mm, $dz=1.4$ mm

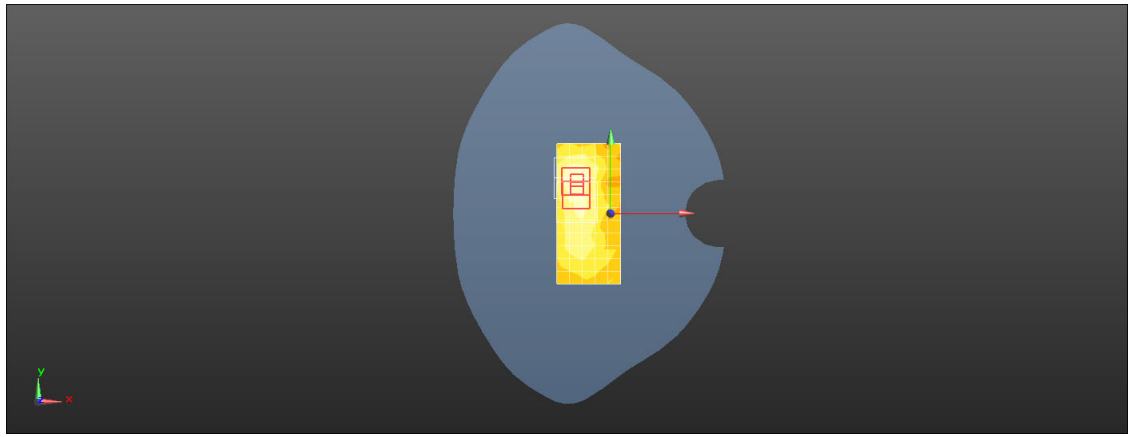
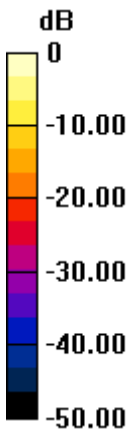
Reference Value = 4.311 V/m; Power Drift = 0.07 dB

Peak SAR (extrapolated) = 0.399 W/kg

SAR(1 g) = 0.083 W/kg; SAR(10 g) = 0.028 W/kg

[Info: Interpolated medium parameters used for SAR evaluation.](#)

Maximum value of SAR (measured) = 0.218 W/kg



0 dB = 0.218 W/kg = -6.62 dBW/kg

Test Laboratory: HUAWEI SAR/HAC Lab

ELE-L04 WiFi 5G 802.11a 48CH Back Side 10mm with Battery2-Core1

DUT: ELE-L04; Type: Smart Phone; Serial: SAR1

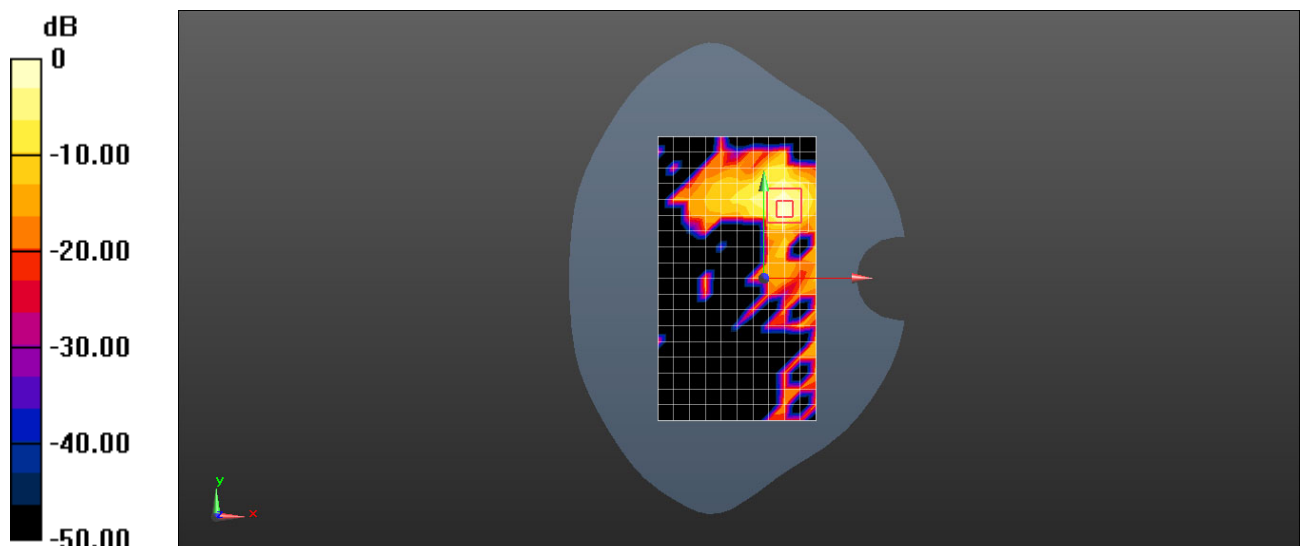
Communication System: UID 0, WiFi(802.11a/b/g/n/ac) (0); Frequency: 5240 MHz; Duty Cycle: 1:1
Medium parameters used: $f = 5240$ MHz; $\sigma = 5.371$ S/m; $\epsilon_r = 47.42$; $\rho = 1000$ kg/m³
Phantom section: Flat Section

DASY Configuration:

- Probe: EX3DV4 - SN7505; ConvF(4.84, 4.84, 4.84) @ 5240 MHz; Calibrated: 2018-6-12
- Sensor-Surface: 1.4mm (Mechanical Surface Detection), $z = 1.0, 25.0$
- Electronics: DAE3 Sn393; Calibrated: 2018-8-14
- Phantom: SAM2; Type: SAM; Serial: 1474
- DASY52 52.10.1(1476); SEMCAD X 14.6.11(7439)

Configuration/Body/Area Scan (11x19x1): Measurement grid: $dx=10$ mm, $dy=10$ mm
Maximum value of SAR (measured) = 0.194 W/kg

Configuration/Body/Zoom Scan (8x9x7)/Cube 0: Measurement grid: $dx=4$ mm, $dy=4$ mm, $dz=1.4$ mm
Reference Value = 4.858 V/m; Power Drift = -0.17 dB
Peak SAR (extrapolated) = 0.236 W/kg
SAR(1 g) = 0.098 W/kg; SAR(10 g) = 0.031 W/kg
Maximum value of SAR (measured) = 0.195 W/kg



0 dB = 0.194 W/kg = -7.12 dBW/kg

Test Laboratory: HUAWEI SAR/HAC Lab

ELE-L04 WiFi 5G 802.11a 136CH Top Side 0mm with Battery2-Core0

DUT: ELE-L04; Type: Smart Phone; Serial: SAR2

Communication System: UID 0, WiFi(802.11a/b/g/n/ac) (0); Frequency: 5680 MHz; Duty Cycle: 1:1
Medium parameters used: $f = 5680$ MHz; $\sigma = 5.869$ S/m; $\epsilon_r = 47.051$; $\rho = 1000$ kg/m³

Phantom section: Flat Section

DASY Configuration:

- Probe: EX3DV4 - SN3820; ConvF(3.84, 3.84, 3.84) @ 5680 MHz; Calibrated: 2018-6-26
- Sensor-Surface: 1.4mm (Mechanical Surface Detection), $z = 1.0, 25.0$
- Electronics: DAE4 Sn913; Calibrated: 2018-5-11
- Phantom: SAM4; Type: SAM; Serial: 1620
- DASY52 52.10.1(1476); SEMCAD X 14.6.11(7439)

Configuration/Body/Area Scan (6x13x1): Measurement grid: $dx=10$ mm, $dy=10$ mm
Maximum value of SAR (measured) = 12.8 W/kg

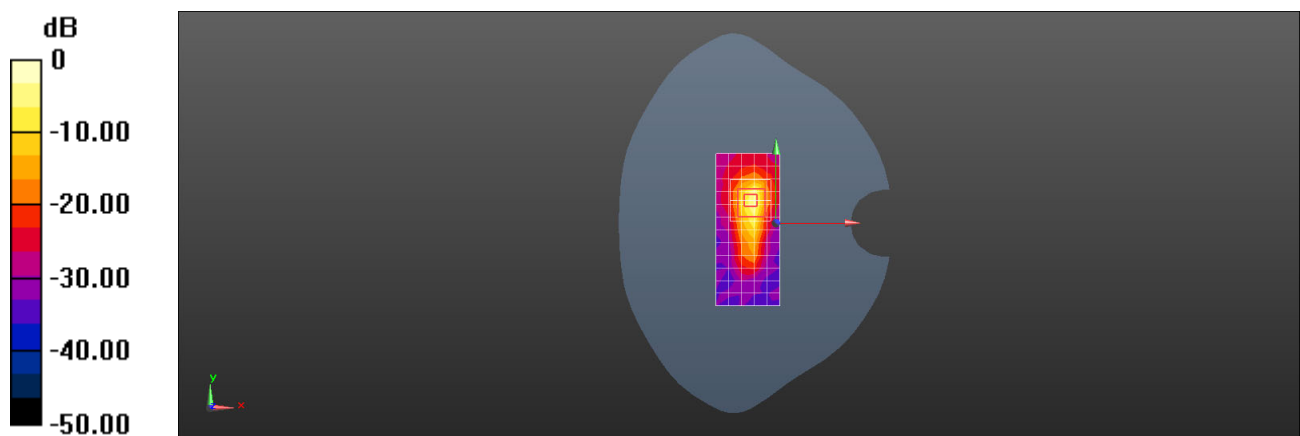
Configuration/Body/Zoom Scan (9x9x7)/Cube 0: Measurement grid: $dx=4$ mm, $dy=4$ mm, $dz=1.4$ mm

Reference Value = 28.19 V/m; Power Drift = 0.01 dB

Peak SAR (extrapolated) = 53.0 W/kg

SAR(1 g) = 6.88 W/kg; SAR(10 g) = 1.49 W/kg

Maximum value of SAR (measured) = 24.5 W/kg



0 dB = 24.5 W/kg = 13.89 dBW/kg

Test Laboratory: HUAWEI SAR/HAC Lab

ELE-L04 WiFi 5G 802.11a 132CH Back Side 0mm with Battery2-Core1

DUT: ELE-L04; Type: Smart Phone; Serial: SAR1

Communication System: UID 0, WiFi(802.11a/b/g/n/ac) (0); Frequency: 5660 MHz; Duty Cycle: 1:1
Medium parameters used: $f = 5660$ MHz; $\sigma = 5.957$ S/m; $\epsilon_r = 46.601$; $\rho = 1000$ kg/m³
Phantom section: Flat Section

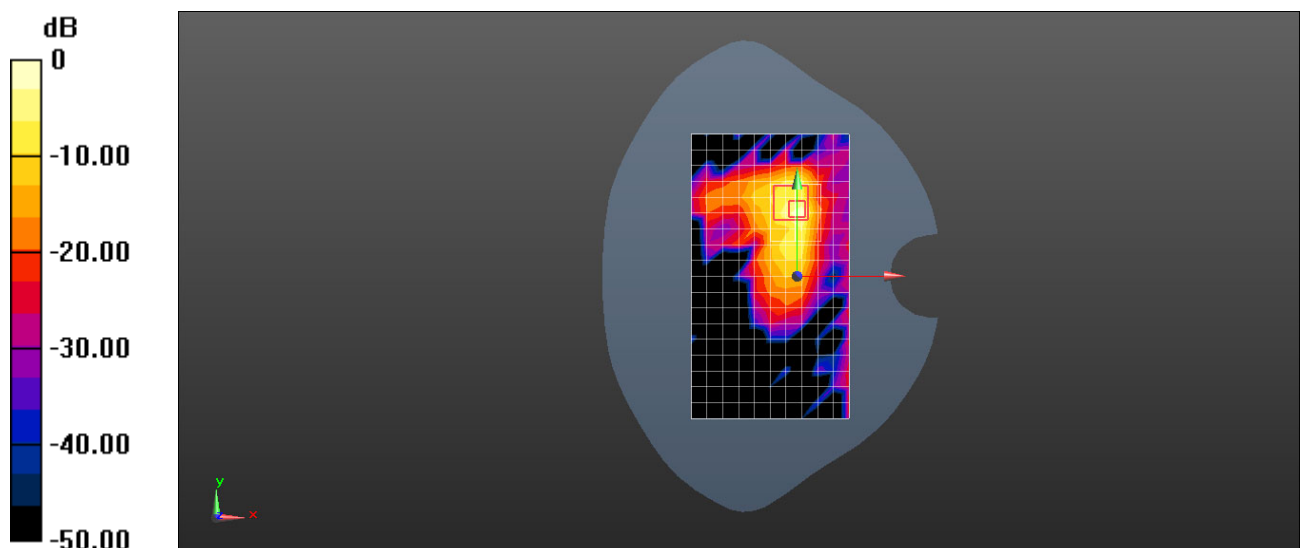
DASY Configuration:

- Probe: EX3DV4 - SN7505; ConvF(4.18, 4.18, 4.18) @ 5660 MHz; Calibrated: 2018-6-12
- Sensor-Surface: 1.4mm (Mechanical Surface Detection), $z = 1.0, 25.0$
- Electronics: DAE3 Sn393; Calibrated: 2018-8-14
- Phantom: SAM2; Type: SAM; Serial: 1474
- DASY52 52.10.1(1476); SEMCAD X 14.6.11(7439)

Configuration/Body/Area Scan (11x19x1): Measurement grid: $dx=10$ mm, $dy=10$ mm
Maximum value of SAR (measured) = 5.56 W/kg

Configuration/Body/Zoom Scan (9x10x7)/Cube 0: Measurement grid: $dx=4$ mm, $dy=4$ mm, $dz=1.4$ mm
Reference Value = 42.67 V/m; Power Drift = -0.17 dB
Peak SAR (extrapolated) = 16.1 W/kg
SAR(1 g) = 2.31 W/kg; SAR(10 g) = 0.523 W/kg

Maximum value of SAR (measured) = 8.97 W/kg



0 dB = 5.56 W/kg = 7.45 dBW/kg

Test Laboratory: HUAWEI SAR/HAC Lab

ELE-L04 BT 39CH Left Tilt with Battery2

DUT: ELE-L04; Type: Smart Phone; Serial: SAR6

Communication System: UID 0, BT (0); Frequency: 2441 MHz; Duty Cycle: 1:1

Medium parameters used (interpolated): $f = 2441$ MHz; $\sigma = 1.865$ S/m; $\epsilon_r = 38.614$; $\rho = 1000$ kg/m³

Phantom section: Left Section

DASY Configuration:

- Probe: EX3DV4 - SN3736; ConvF(7.13, 7.13, 7.13) @ 2441 MHz; Calibrated: 2018-4-27
- Sensor-Surface: 1.4mm (Mechanical Surface Detection), $z = 1.0, 31.0$
- Electronics: DAE4 Sn851; Calibrated: 2018-7-18
- Phantom: SAM9; Type: SAM; Serial: 1958
- DASY52 52.10.1(1476); SEMCAD X 14.6.11(7439)

Configuration/Head/Area Scan (11x16x1): Measurement grid: $dx=12$ mm, $dy=12$ mm

[Info: Interpolated medium parameters used for SAR evaluation.](#)

Maximum value of SAR (measured) = 0.226 W/kg

Configuration/Head/Zoom Scan (8x7x7)/Cube 0: Measurement grid: $dx=5$ mm, $dy=5$ mm, $dz=5$ mm

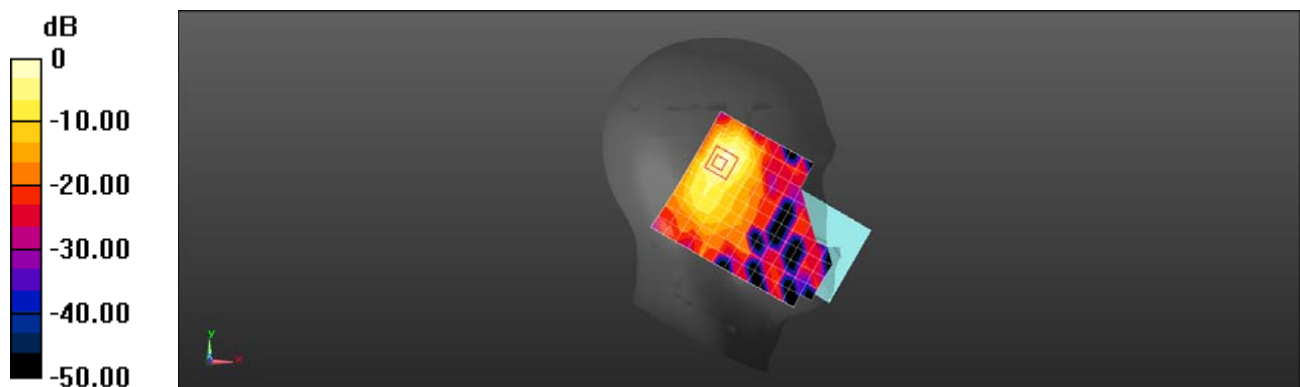
Reference Value = 6.217 V/m; Power Drift = 0.01 dB

Peak SAR (extrapolated) = 0.384 W/kg

SAR(1 g) = 0.156 W/kg; SAR(10 g) = 0.061 W/kg

[Info: Interpolated medium parameters used for SAR evaluation.](#)

Maximum value of SAR (measured) = 0.286 W/kg



0 dB = 0.286 W/kg = -5.44 dBW/kg

Test Laboratory: HUAWEI SAR/HAC Lab

ELE-L04 BT 22CH Back Side 15mm

DUT: ELE-L04; Type: Smart Phone; Serial: SAR1

Communication System: UID 0, BT (0); Frequency: 2424 MHz; Duty Cycle: 1:1

Medium parameters used: $f = 2424$ MHz; $\sigma = 2.013$ S/m; $\epsilon_r = 50.386$; $\rho = 1000$ kg/m³

Phantom section: Flat Section

DASY Configuration:

- Probe: EX3DV4 - SN3744; ConvF(7.39, 7.39, 7.39) @ 2424 MHz; Calibrated: 2018-7-25
- Sensor-Surface: 1.4mm (Mechanical Surface Detection), $z = 1.0, 31.0$
- Electronics: DAE3 Sn393; Calibrated: 2018-8-14
- Phantom: SAM2; Type: SAM; Serial: 1474
- DASY52 52.10.1(1476); SEMCAD X 14.6.11(7439)

Configuration/Body/Area Scan (10x16x1): Measurement grid: $dx=12$ mm, $dy=12$ mm

Maximum value of SAR (measured) = 0.121 W/kg

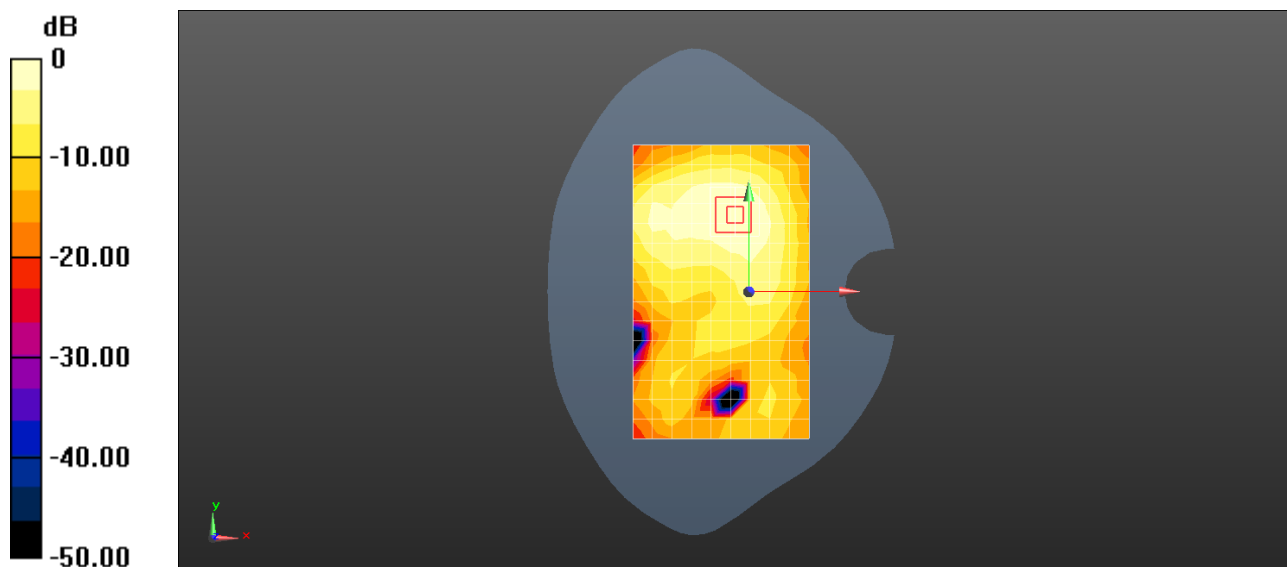
Configuration/Body/Zoom Scan (7x7x7)/Cube 0: Measurement grid: $dx=5$ mm, $dy=5$ mm, $dz=5$ mm

Reference Value = 4.664 V/m; Power Drift = -0.10 dB

Peak SAR (extrapolated) = 0.159 W/kg

SAR(1 g) = 0.087 W/kg; SAR(10 g) = 0.049 W/kg

Maximum value of SAR (measured) = 0.131 W/kg



0 dB = 0.121 W/kg = -9.17 dBW/kg

Test Laboratory: HUAWEI SAR/HAC Lab

ELE-L04 BT 22CH Top Side 10mm

DUT: ELE-L04; Type: Smart Phone; Serial: SAR1

Communication System: UID 0, BT (0); Frequency: 2424 MHz; Duty Cycle: 1:1

Medium parameters used: $f = 2424$ MHz; $\sigma = 2.013$ S/m; $\epsilon_r = 50.386$; $\rho = 1000$ kg/m³

Phantom section: Flat Section

DASY Configuration:

- Probe: EX3DV4 - SN3744; ConvF(7.39, 7.39, 7.39) @ 2424 MHz; Calibrated: 2018-7-25
- Sensor-Surface: 1.4mm (Mechanical Surface Detection), $z = 1.0, 31.0$
- Electronics: DAE3 Sn393; Calibrated: 2018-8-14
- Phantom: SAM2; Type: SAM; Serial: 1474
- DASY52 52.10.1(1476); SEMCAD X 14.6.11(7439)

Configuration/Body/Area Scan (6x11x1): Measurement grid: $dx=12$ mm, $dy=12$ mm

Maximum value of SAR (measured) = 0.410 W/kg

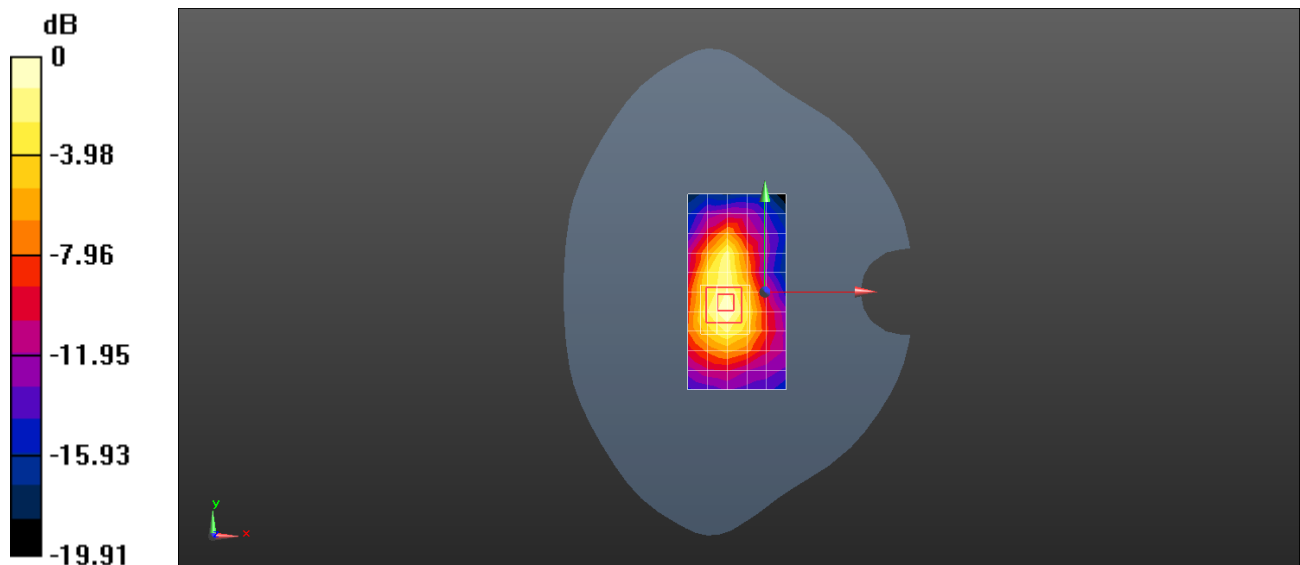
Configuration/Body/Zoom Scan (7x7x7)/Cube 0: Measurement grid: $dx=5$ mm, $dy=5$ mm, $dz=5$ mm

Reference Value = 7.527 V/m; Power Drift = -0.13 dB

Peak SAR (extrapolated) = 0.532 W/kg

SAR(1 g) = 0.232 W/kg; SAR(10 g) = 0.127 W/kg

Maximum value of SAR (measured) = 0.401 W/kg



0 dB = 0.410 W/kg = -3.87 dBW/kg