



FCC SAR Compliance Test Report

Product Name: LTE USB Stick

Model: E3372h-510

Report No.: SYBH(Z-SAR)032092014-2

FCC ID: QISE3372H-510

	APPROVED (Lab Manager)	PREPARED (Test Engineer)
BY	<i>Wei Huanbin</i>	<i>Cheng Jianwen</i>
DATE	2014-10-31	2014-10-31

The test results of this test report relate exclusively to the item(s) tested . The HUAWEI does not assume responsibility for any conclusions and generalisations drawn from the test results with regard to other specimens or samples of the type of the equipment represented by the test item. The test report may only be reproduced or published in full. Reproduction or publication of extracts from the report requires the prior written approval of HUAWEI.

Reliability Laboratory of Huawei Technologies Co., Ltd.

Administration Building, Headquarters of Huawei Technologies Co., Ltd., Bantian, Longgang District, Shenzhen, 518129, P.R.C

Tel: +86 755 28780808 Fax: +86 755 89652518

Table of Contents

1	General Information.....	4
1.1	Statement of Compliance	4
1.2	RF exposure limits.....	5
1.3	EUT Description	6
1.3.1	General Description	8
1.4	Test specification(s).....	9
1.5	Testing laboratory.....	9
1.6	Applicant and Manufacturer	9
1.7	Application details.....	9
1.8	Ambient Condition	9
2	SAR Measurement System	10
2.1	SAR Measurement Set-up	10
2.2	Test environment.....	11
2.3	Data Acquisition Electronics description	11
2.4	Probe description.....	12
2.5	Phantom description.....	13
2.6	Device holder description	14
2.7	Test Equipment List.....	15
3	SAR Measurement Procedure	16
3.1	Scanning procedure	16
3.2	Spatial Peak SAR Evaluations	17
3.3	Data Storage and Evaluation	18
4	System Verification Procedure	20
4.1	Tissue Verification	20
4.2	System Check	22
4.3	System check Procedure.....	22
5	SAR measurement variability and uncertainty	23
5.1	SAR measurement variability	23
5.2	SAR measurement uncertainty	23
6	SAR Test Configuration.....	24
6.1	GSM Test Configuration	24
6.2	UMTS Test Configuration	24
6.3	LTE Test Configuration.....	28
7	SAR Measurement Results	31
7.1	Conducted power measurements	31
7.1.1	Conducted power measurements of GSM850	32
7.1.2	Conducted power measurements of GSM1900	33
7.1.3	Conducted power measurements of UMTS Band V.....	34
7.1.4	Conducted power measurements of UMTS Band IV.....	35
7.1.5	Conducted power measurements of UMTS Band II	36
7.1.6	Conducted power measurements of LTE Band V	37
7.1.7	Conducted power measurements of LTE Band IV	38
7.1.8	Conducted power measurements of LTE Band II.....	40
7.1.9	Conducted power measurements of LTE Band VII	42
7.2	SAR measurement Results	44
7.2.1	SAR measurement Result of GSM850	45
7.2.2	SAR measurement Result of GSM1900.....	46
7.2.3	SAR measurement Result of UMTS Band V	47
7.2.4	SAR measurement Result of UMTS Band IV	48
7.2.5	SAR measurement Result of UMTS Band II	49
7.2.6	SAR measurement Result of LTE Band V.....	50
7.2.7	SAR measurement Result of LTE Band IV.....	51
7.2.8	SAR measurement Result of LTE Band II	52
7.2.9	SAR measurement Result of LTE Band VII.....	53
	Appendix A. System Check Plots.....	54
	Appendix B. SAR Measurement Plots.....	54
	Appendix C. Calibration Certificate	54
	Appendix D. Photo documentation.....	54

※ ※ **Modified History** ※ ※

REV.	DESCRIPTION	ISSUED DATE	REMARK
Rev.1.0	Initial Test Report Release	2014-10-31	Cheng Jiawen

1 General Information

1.1 Statement of Compliance

The maximum results of Specific Absorption Rate (SAR) found during testing for E3372h-510 is as below Table 1.

Band	Position	MAX Reported SAR _{1g} (W/kg)
GSM850	Body 5mm	1.092
GSM1900	Body 5mm	1.155
UMTS Band V	Body 5mm	1.038
UMTS Band IV	Body 5mm	1.198
UMTS Band II	Body 5mm	1.164
LTE Band V	Body 5mm	1.108
LTE Band IV	Body 5mm	1.052
LTE Band II	Body 5mm	1.146
LTE Band VII	Body 5mm	1.096

Table 1: Summary of test result

The device is in compliance with Specific Absorption Rate (SAR) for general population/uncontrolled exposure limits according to the FCC rule §2.1093, the ANSI/IEEE C95.1:1992, the NCRP Report Number 86 for uncontrolled environment, according to the Industry Canada Radio Standards Specification RSS-102 for General Population/Uncontrolled exposure, and had been tested in accordance with the measurement methods and procedures specified in IEEE Std 1528-2003 & IEEE Std 1528a-2005.

1.2 RF exposure limits

Human Exposure	Uncontrolled Environment General Population	Controlled Environment Occupational
Spatial Peak SAR* (Brain/Body/Arms/Legs)	1.60 mW/g	8.00 mW/g
Spatial Average SAR** (Whole Body)	0.08 mW/g	0.40 mW/g
Spatial Peak SAR*** (Hands/Feet/Ankle/Wrist)	4.00 mW/g	20.00 mW/g

Table 2: RF exposure limits

The limit applied in this test report is shown in **bold** letters

Notes:

* The Spatial Peak value of the SAR averaged over any 1 gram of tissue (defined as a tissue volume in the shape of a cube) and over the appropriate averaging time.

** The Spatial Average value of the SAR averaged over the whole body.

*** The Spatial Peak value of the SAR averaged over any 10 grams of tissue (defined as a tissue volume in the shape of a cube) and over the appropriate averaging time.

Uncontrolled Environments are defined as locations where there is the exposure of individuals who have no knowledge or control of their exposure.

Controlled Environments are defined as locations where there is exposure that may be incurred by persons who are aware of the potential for exposure, (i.e. as a result of employment or occupation).

1.3 EUT Description

Device Information:			
Product Name:	LTE USB Stick		
Model:	E3372h-510		
FCC ID :	QISE3372H-510		
IMEI:	201407230001046		
Device Type :	Portable device		
Device Phase:	Identical Prototype		
Exposure Category:	Uncontrolled environment / general population		
Hardware Version :	CL2E3372HM		
Software Version :	22.521.13.00.00		
Antenna Type :	Internal antenna		
Device Operating Configurations:			
Supporting Mode(s)	GSM850/1900, UMTS Band V/IV/II,LTE Band V/IV/II/VII		
Test Modulation	GSM(GMSK/8PSK),UMTS(QPSK),LTE(QPSK/16QAM)		
Device Class	B		
Operating Frequency Range(s)	Band	Tx (MHz)	Rx (MHz)
	GSM850	824-849	869-894
	GSM1900	1850-1910	1930-1990
	UMTS Band V	824-849	869-894
	UMTS Band IV	1710-1755	2110-2155
	UMTS Band II	1850-1910	1930-1990
	LTE Band V	824-849	869-894
	LTE Band IV	1710-1755	2110-2155
	LTE Band II	1850-1910	1930-1990
	LTE Band VII	2500-2570	2620-2690
GPRS Multislot Class(12)	Max Number of Timeslots in Uplink:		4
	Max Number of Timeslots in Downlink:		4
	Max Total Timeslot:		5
EGPRS Multislot Class(12)	Max Number of Timeslots in Uplink:		4
	Max Number of Timeslots in Downlink:		4
	Max Total Timeslot:		5
HSDPA UE Category	14		
HSUPA UE Category	6		
Power Class:	4, tested with power level 5(GSM850)		
	1, tested with power level 0(GSM1900)		
	3, tested with power control “all 1”(UMTS Band V)		
	3, tested with power control “all 1”(UMTS Band IV)		
	3, tested with power control “all 1”(UMTS Band II)		
	3, tested with power control all Max.(LTE Band V)		
	3, tested with power control all Max.(LTE Band IV)		
	3, tested with power control all Max.(LTE Band II)		
	3, tested with power control all Max.(LTE Band VII)		
Test Channels(low-mid-high):	128-190-251(GSM850)		
	512-661-810(GSM1900)		
	4132-4182-4233(UMTS Band V)		
	4132-4182-4233(UMTS Band IV)		
	9262-9400-9538(UMTS Band II)		
	20425-20525-20625(LTE Band V BW=5MHz)		
	20450-20525-20600(LTE Band V BW=10MHz)		
	19975-20175-20375(LTE Band IV BW=5MHz)		
	20000-20175-20350(LTE Band IV BW=10MHz)		

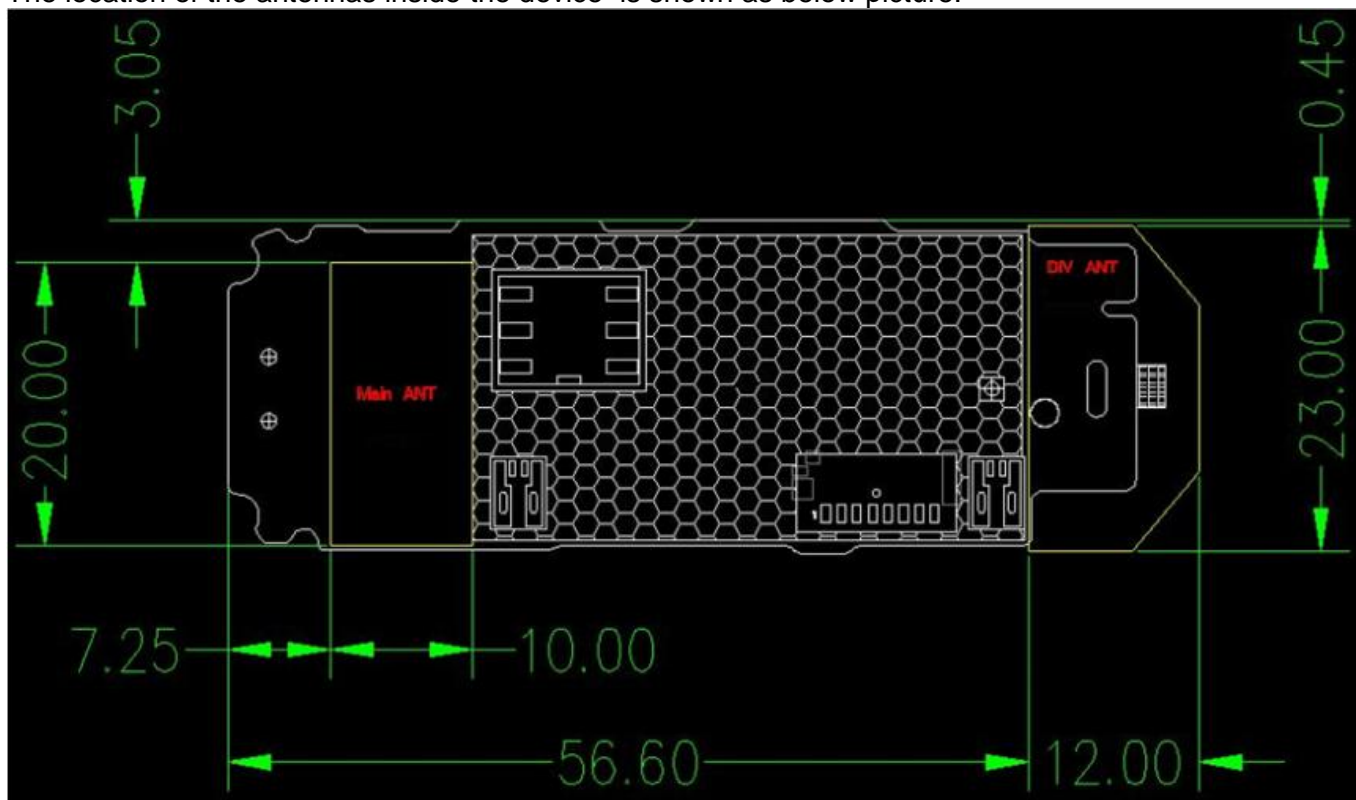
Test Channels(low-mid-high):	20025-20175-20325(LTE Band IV BW=15MHz)
	20050-20175-20300(LTE Band IV BW=20MHz)
	18625-18900-19175(LTE Band II BW=5MHz)
	18650-18900-19150(LTE Band II BW=10MHz)
	18675-18900-19125(LTE Band II BW=15MHz)
	18700-18900-19100(LTE Band II BW=20MHz)
	20775-21100-21425(LTE Band VII BW=5MHz)
	20800-21100-21400(LTE Band VII BW=10MHz)
	20825-21100-21375(LTE Band VII BW=15MHz)
	20850-21100-21350(LTE Band VII BW=20MHz)

Table 3:Device information and operating configuration

1.3.1 General Description

E3372h-510 is a subscriber equipment in the LTE/UMTS/GSM system. E3372h-510 implement such functions as RF signal receiving/ transmitting, LTE/HSPA+/WCDMA protocol processing, data service etc. About 3G WCDMA wireless mode, it supports WCDMA and HSDPA/HSUPA/HSPA+, operating in Band1, Band2, Band4, and Band5; and the 4G LTE, operating in Band1, Band2, Band4, Band5, Band7 and Band28; and GSM operating in 850MHz, 900MHz, 1800MHz and 1900MHz. Externally it provides USB interface (to connect to the notebook etc.), USIM card interface and Micro SD card interface. E3372h-510 has 2 internal antennas as default diversity and main antenna.

The location of the antennas inside the device is shown as below picture:



Note : Div antenna is used to improve the acceptance of performance of the main antenna. It does not have the transmitter function.

1.4 Test specification(s)

ANSI Std C95.1-1992	Safety Levels with Respect to Human Exposure to Radio Frequency Electromagnetic Fields, 3 kHz – 300 GHz.(IEEE Std C95.1-1991)
IEEE Std 1528-2003	Recommended Practice for Determining the Peak Spatial-Average Specific Absorption Rate (SAR) in the Human Head from Wireless Communications Devices: Measurement Techniques
IEEE Std 1528a-2005	IEEE Recommended Practice for Determining the Peak Spatial-Average Specific Absorption Rate (SAR) in the Human Head from Wireless Communications Devices: Measurement Techniques Amendment 1: CAD File for Human Head Model (SAM Phantom)
RSS-102	Radio Frequency Exposure Compliance of Radiocommunication Apparatus (All Frequency Bands (Issue 4 of March 2010))
KDB941225 D01	3G SAR Procedures v03
KDB941225 D05	SAR for LTE Devices v02r03
KDB941225 D05A	LTE Rel.10 KDB Inquiry Sheet v01r01
KDB447498 D01	General RF Exposure Guidance v05r02
KDB447498 D02	SAR Procedures for Dongle Xmtr v02
KDB865664 D01	SAR measurement 100 MHz to 6 GHz v01r03
KDB865664 D02	SAR Reporting v01r01
KDB690783 D01	SAR Listings on Grants v01r03

1.5 Testing laboratory

Test Site	The Reliability Laboratory of Huawei Technologies Co., Ltd.
Test Location	Zone K3,Huawei Industrial Base, Bantian Industry Area, Longgang District, Shenzhen, Guangdong, China
Telephone	+86 755 28780808
Fax	+86 755 89652518
State of accreditation	The Test laboratory (area of testing) is accredited according to ISO/IEC 17025. CNAS Registration number: L0310 A2LA TESTING CERT #2174.01

1.6 Applicant and Manufacturer

Company Name	HUAWEI TECHNOLOGIES CO., LTD
Address	Administration Building, Headquarters of Huawei Technologies Co., Ltd., Bantian, Longgang District, Shenzhen, 518129, P.R.C

1.7 Application details

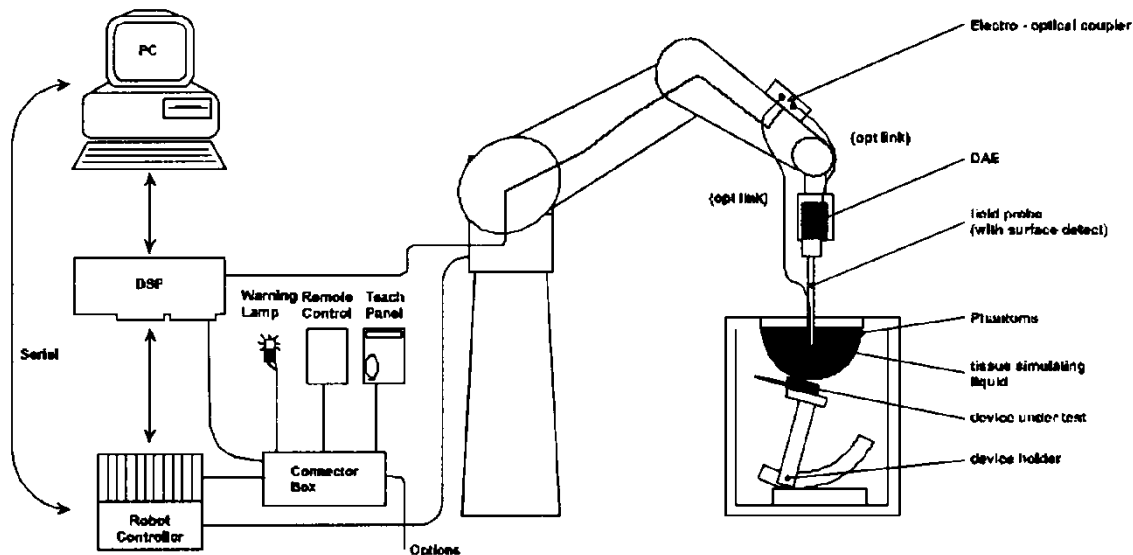
Start Date of test	2014-10-15
End Date of test	2014-10-23

1.8 Ambient Condition

Ambient temperature	20°C – 24°C
Relative Humidity	30% – 70%

2 SAR Measurement System

2.1 SAR Measurement Set-up



The DASY5 system for performing compliance tests consists of the following items:

- A standard high precision 6-axis robot (Stäubli RX family) with controller and software. An arm extension for accommodating the data acquisition electronics (DAE).
- A dosimetric probe, i.e. an isotropic E-field probe optimized and calibrated for usage in tissue simulating liquid. The probe is equipped with an optical surface detector system.
- A data acquisition electronic (DAE) which performs the signal amplification, signal multiplexing, AD-conversion, offset measurements, mechanical surface detection, collision detection, etc. The unit is battery powered with standard or rechargeable batteries. The signal is optically transmitted to the EOC.
- A unit to operate the optical surface detector which is connected to the EOC.
- The Electro-Optical Coupler (EOC) performs the conversion from the optical into a digital electric signal of the DAE. The EOC is connected to the DASY5 measurement server.
- The DASY5 measurement server, which performs all real-time data evaluation for field measurements and surface detection, controls robot movements and handles safety operation. A computer operating Windows 7.
- DASY5 software and SEMCAD data evaluation software.
- Remote control with teach panel and additional circuitry for robot safety such as warning lamps, etc.
- The generic twin phantom enabling the testing of left-hand and right-hand usage.
- The device holder for handheld mobile phones.
- Tissue simulating liquid mixed according to the given recipes.
- System check dipoles allowing to validate the proper functioning of the system.

2.2 Test environment

The DASY5 measurement system is placed at the head end of a room with dimensions: 5 x 2.5 x 3 m³, the SAM phantom is placed in a distance of 75 cm from the side walls and 1.1m from the rear wall. Above the test system a 1.5 x 1.5 m² array of pyramid absorbers is installed to reduce reflections from the ceiling.

Picture 1 of the photo documentation shows a complete view of the test environment.


The system allows the measurement of SAR values larger than 0.005 mW/g.

2.3 Data Acquisition Electronics description

The data acquisition electronics (DAE) consist of a highly sensitive electrometer-grade preamplifier with auto-zeroing, a channel and gain-switching multiplexer, a fast 16 bit AD-converte and a command decoder with a control logic unit. Transmission to the measurement server is accomplished through an optical downlink for data and status information, as well as an optical uplink for commands and the clock.

The mechanical probe mounting device includes two different sensor systems for frontal and sideways probe contacts. They are used for mechanical surface detection and probe collision detection.

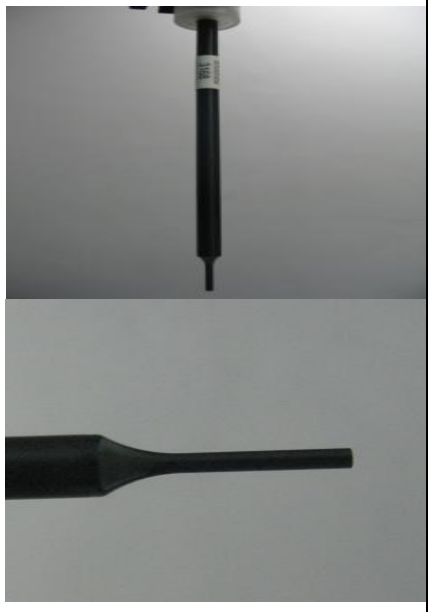
DAE4

Input Impedance	200MOhm	
The Inputs	symmetrical and floating	
Common mode rejection	above 80 dB	

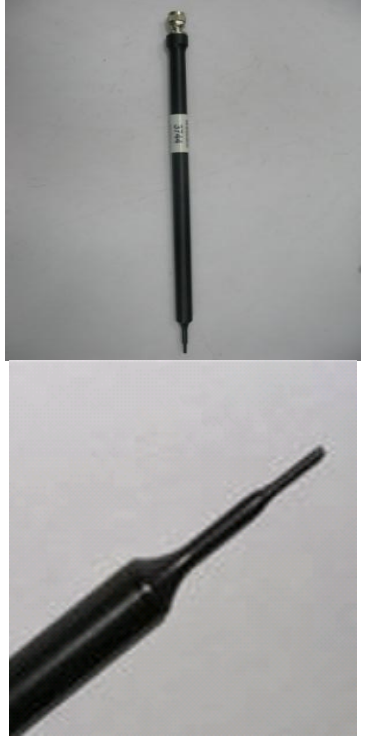
2.4 Probe description

These probes are specially designed and calibrated for use in liquids with high permittivities. They should not be used in air, since the spherical isotropy in air is poor (± 2 dB). The dosimetric probes have special calibrations in various liquids at different frequencies.

Isotropic E-Field Probe ES3DV3 for Dosimetric Measurements


Construction	Symmetrical design with triangular core Interleaved sensors Built-in shielding against static charges PEEK enclosure material (resistant to organic solvents, e.g., DGBE)	
Calibration	ISO/IEC 17025 calibration service available.	
Frequency	10 MHz to 4 GHz; Linearity: ± 0.2 dB (30 MHz to 4 GHz)	
Directivity	± 0.2 dB in HSL (rotation around probe axis) ± 0.3 dB in tissue material (rotation normal to probe axis)	
Dynamic range	5 μ W/g to > 100 mW/g; Linearity: ± 0.2 dB	
Dimensions	Overall length: 337 mm (Tip: 20 mm) Tip diameter: 3.9 mm (Body: 12 mm) Distance from probe tip to dipole centers: 2.0 mm	
Application	General dosimetry up to 4 GHz Dosimetry in strong gradient fields Compliance tests of mobile phones	

Isotropic E-Field Probe EX3DV4 for Dosimetric Measurements

Construction	Symmetrical design with triangular core Built-in shielding against static charges PEEK enclosure material (resistant to organic solvents, e.g., DGBE)	
Calibration	ISO/IEC 17025 calibration service available.	
Frequency	10 MHz to >6 GHz; Linearity: ± 0.2 dB (30 MHz to 6 GHz)	
Directivity	± 0.3 dB in HSL (rotation around probe axis) ± 0.5 dB in tissue material (rotation normal to probe axis)	
Dynamic range	10 μ W/g to > 100 mW/g; Linearity: ± 0.2 dB (noise: typically < 1 μ W/g)	
Dimensions	Overall length: 337 mm (Tip: 20 mm) Tip diameter: 2.5 mm (Body: 12 mm) Typical distance from probe tip to dipole centers: 1 mm	
Application	High precision dosimetric measurements in any exposure scenario (e.g., very strong gradient fields). Only probe which enables compliance testing for frequencies up to 6 GHz with precision of better 30%	

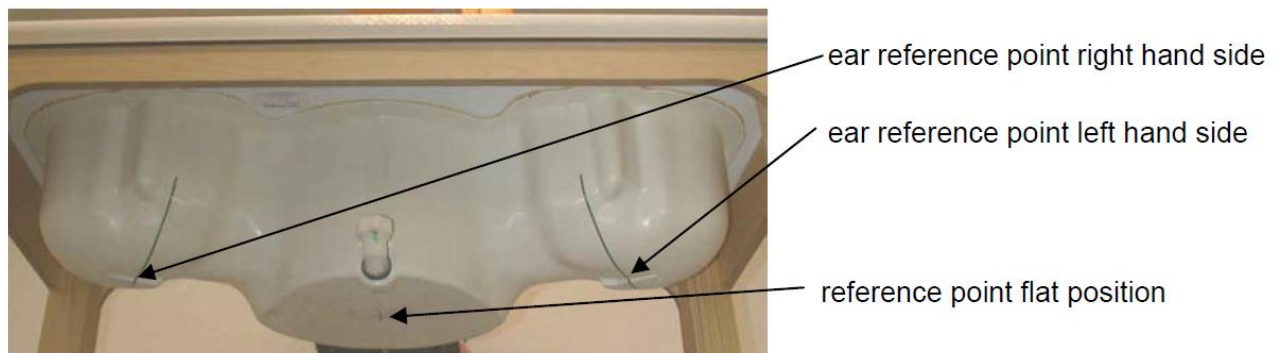
2.5 Phantom description

SAM Twin Phantom


Shell Thickness	2mm +/- 0.2 mm; The ear region: 6mm	
Filling Volume	Approximately 25 liters	
Dimensions	Length:1000mm; Width:500mm; Height: adjustable feet	
Measurement Areas	Left hand Right hand Flat phantom	

The bottom plate contains three pairs of bolts for locking the device holder. The device holder positions are adjusted to the standard measurement positions in the three sections. A white cover is provided to cover the phantom during off-periods to prevent water evaporation and changes in the liquid parameters. Free space scans of devices on top of this phantom cover are possible. Three reference marks are provided on the phantom counter. These reference marks are used to teach the absolute phantom position relative to the robot.

The following figure shows the definition of reference point:



ELI4 Phantom

Shell Thickness	2mm +/- 0.2 mm	
Filling Volume	Approximately 30 liters	
Dimensions	Major axis:600mm; Minor axis:400mm;	
Measurement Areas	Flat phantom	

The ELI4 phantom is intended for compliance testing of handheld and body-mounted wireless devices in the frequency range of 30MHz to 6GHz. ELI4 is fully compatible with the latest draft of the standard IEC 62209-2 and all known tissue simulating liquids.

The phantom shell material is resistant to all ingredients used in the tissue-equivalent liquid recipes. The shell of the phantom including ear spacers is constructed from low permittivity and low loss material, with a relative permittivity $2 \leq \epsilon_r \leq 5$ at ≤ 3 GHz, $3 \leq \epsilon_r \leq 4$ at > 3 GHz and a loss tangent ≤ 0.05 .

2.6 Device holder description

The DASY5 device holder has two scales for device rotation (with respect to the body axis) and the device inclination (with respect to the line between the ear openings). The plane between the ear openings and the mouth tip has a rotation angle of 65° . The bottom plate contains three pair of bolts for locking the device holder. The device holder positions are adjusted to the standard measurement positions in the three sections. This device holder is used for standard mobile phones or PDA's only. If necessary an additional support of polystyrene material is used.



The DASY device holder is constructed of low-loss POM material having the following dielectric parameters: relative permittivity $\epsilon = 3$ and loss tangent $\sigma = 0.02$. The amount of dielectric material has been reduced in the closest vicinity of the device, since measurements have suggested that the influence of the clamp on the test results could thus be lowered.

The device holder permits the device to be positioned with a tolerance of $\pm 1^\circ$ in the tilt angle.

Larger DUT's (e.g. notebooks) cannot be tested using this device holder. Instead a support of bigger polystyrene cubes and thin polystyrene plates is used to position the DUT in all relevant positions to find and measure spots with maximum SAR values.

Therefore those devices are normally only tested at the flat part of the SAM.

2.7 Test Equipment List

This table gives a complete overview of the SAR measurement equipment.

Devices used during the test described are marked ☒

	Manufacturer	Device	Type	Serial number	Date of last calibration	Valid period
<input type="checkbox"/>	SPEAG	Dosimetric E-Field Probe	EX3DV4	3736	2014-04-24	One year
<input checked="" type="checkbox"/>	SPEAG	Dosimetric E-Field Probe	EX3DV4	3744	2014-07-24	One year
<input type="checkbox"/>	SPEAG	Dosimetric E-Field Probe	EX3DV4	3898	2014-03-10	One year
<input checked="" type="checkbox"/>	SPEAG	835 MHz Dipole	D835V2	4d059	2013-05-02	Three years
<input checked="" type="checkbox"/>	SPEAG	1750 MHz Dipole	D1750V2	1123	2014-07-08	Three years
<input checked="" type="checkbox"/>	SPEAG	1900 MHz Dipole	D1900V2	5d142	2014-06-18	Three years
<input checked="" type="checkbox"/>	SPEAG	2600 MHz Dipole	D2600V2	1021	2014-07-16	Three years
<input checked="" type="checkbox"/>	SPEAG	Data acquisition electronics	DAE4	1236	2013-11-25	One year
<input checked="" type="checkbox"/>	SPEAG	Software	DASY 5	N/A	NCR	NCR
<input checked="" type="checkbox"/>	SPEAG	Twin Phantom	SAM1	TP-1475	NCR	NCR
<input checked="" type="checkbox"/>	SPEAG	Twin Phantom	SAM2	TP-1474	NCR	NCR
<input type="checkbox"/>	SPEAG	Twin Phantom	SAM3	TP-1597	NCR	NCR
<input type="checkbox"/>	SPEAG	Twin Phantom	SAM4	TP-1620	NCR	NCR
<input type="checkbox"/>	SPEAG	Flat Phantom	ELI 4.0	TP-1038	NCR	NCR
<input type="checkbox"/>	SPEAG	Flat Phantom	ELI 4.0	TP-1111	NCR	NCR
<input checked="" type="checkbox"/>	R & S	Universal Radio Communication Tester	CMU 200	111379	2014-07-11	One year
<input checked="" type="checkbox"/>	R & S	Universal Radio Communication Tester	CMW 500	126855	2014-07-11	One year
<input checked="" type="checkbox"/>	Agilent	Network Analyser	E5071C	MY46213349	2014-02-25	One year
<input checked="" type="checkbox"/>	Agilent	Dielectric Probe Kit	85070E	2484	NCR	NCR
<input checked="" type="checkbox"/>	Agilent	Signal Generator	N5181A	MY47420989	2014-01-18	One year
<input checked="" type="checkbox"/>	MINI-CIRCUITS	Amplifier	ZHL-42W	QA1402001	NCR	NCR
<input type="checkbox"/>	MINI-CIRCUITS	Amplifier	ZVE-8G+	129601322	NCR	NCR
<input checked="" type="checkbox"/>	AR	Directional Coupler	DC7144M1	0423264	2014-04-02	One year
<input checked="" type="checkbox"/>	R & S	Power Meter	NRP	100740	2014-07-11	One year
<input checked="" type="checkbox"/>	R & S	Power Meter Sensor	NRP-Z11	106288	2014-07-11	One year
<input checked="" type="checkbox"/>	Agilent	Power Meter	E4417A	MY45101339	2014-01-18	One year
<input checked="" type="checkbox"/>	Agilent	Power Meter Sensor	E9321A	MY44420359	2014-01-18	One year

Note:

1) Per KDB865664D01 requirements for dipole calibration, the test laboratory has adopted three-year extended calibration interval. Each measured dipole is expected to evaluate with the following criteria at least on annual interval in Appendix C.

- There is no physical damage on the dipole;
- System check with specific dipole is within 10% of calibrated value;
- The most recent return-loss result, measured at least annually, deviates by no more than 20% from the previous measurement.
- The most recent measurement of the real or imaginary parts of the impedance, measured at least annually is within 5Ω from the previous measurement.

2) Network analyzer probe calibration against air, distilled water and a shorting block performed before measuring liquid parameters.

3 SAR Measurement Procedure

3.1 Scanning procedure

The DASY5 installation includes predefined files with recommended procedures for measurements and system check. They are read-only document files and destined as fully defined but unmeasured masks. All test positions (head or body-worn) are tested with the same configuration of test steps differing only in the grid definition for the different test positions.

- The “reference” and “drift” measurements are located at the beginning and end of the batch process. They measure the field drift at one single point in the liquid over the complete procedure. The indicated drift is mainly the variation of the DUT’s output power and should vary max. +/- 5 %.
- The “surface check” measurement tests the optical surface detection system of the DASY5 system by repeatedly detecting the surface with the optical and mechanical surface detector and comparing the results. The output gives the detecting heights of both systems, the difference between the two systems and the standard deviation of the detection repeatability. Air bubbles or refraction in the liquid due to separation of the sugar-water mixture gives poor repeatability (above $\pm 0.1\text{mm}$). To prevent wrong results tests are only executed when the liquid is free of air bubbles. The difference between the optical surface detection and the actual surface depends on the probe and is specified with each probe. (It does not depend on the surface reflectivity or the probe angle to the surface within $\pm 30^\circ$.)
- The “area scan” measures the SAR above the DUT or verification dipole on a parallel plane to the surface. It is used to locate the approximate location of the peak SAR with 2D spline interpolation. The robot performs a stepped movement along one grid axis while the local electrical field strength is measured by the probe. The probe is touching the surface of the SAM during acquisition of measurement values. The standard scan uses large grid spacing for faster measurement. Standard grid spacing for head measurements is 15 mm in x- and y- dimension ($\leq 2\text{GHz}$), 12 mm in x- and y- dimension (2-4 GHz) and 10mm in x- and y- dimension (4-6GHz). If a finer resolution is needed, the grid spacing can be reduced. Grid spacing and orientation have no influence on the SAR result. For special applications where the standard scan method does not find the peak SAR within the grid, e.g. mobile phones with flip cover, the grid can be adapted in orientation. Results of this coarse scan are shown in Appendix B.
- A “zoom scan” measures the field in a volume around the 2D peak SAR value acquired in the previous “coarse” scan. This is a fine grid with maximum scan spatial resolution: $\Delta x_{\text{zoom}}, \Delta y_{\text{zoom}} \leq 2\text{GHz} - \leq 8\text{mm}$, 2-4GHz - $\leq 5\text{ mm}$ and 4-6 GHz- $\leq 4\text{mm}$; $\Delta z_{\text{zoom}} \leq 3\text{GHz} - \leq 5\text{ mm}$, 3-4 GHz- $\leq 4\text{mm}$ and 4-6GHz- $\leq 2\text{mm}$ where the robot additionally moves the probe along the z-axis away from the bottom of the Phantom. DASY is also able to perform repeated zoom scans if more than 1 peak is found during area scan. In this document, the evaluated peak 1g and 10g averaged SAR values are shown in the 2D-graphics in Appendix B. Test results relevant for the specified standard (see chapter 1.4.) are shown in table form in chapter 7.2.
- A Z-axis scan measures the total SAR value at the x-and y-position of the maximum SAR value found during the cube scan. The probe is moved away in z-direction from the bottom of the SAM phantom in 2 mm steps. This measurement shows the continuity of the liquid and can - depending in the field strength – also show the liquid depth. A z-axis scan of the measurement with maximum SAR value is shown in Appendix B.

The following table summarizes the area scan and zoom scan resolutions per FCC KDB 865664D01:

Frequency	Maximun Area Scan resolution ($\Delta x_{\text{area}}, \Delta y_{\text{area}}$)	Maximun Zoom Scan spatial resolution ($\Delta x_{\text{Zoom}}, \Delta y_{\text{Zoom}}$)	Maximun Zoom Scan spatial resolution			Minimum zoom scan volume (x,y,z)
			Uniform Grid	Graded Grad		
			$\Delta z_{\text{Zoom}}(n)$	$\Delta z_{\text{Zoom}}(1)^*$	$\Delta z_{\text{Zoom}}(n>1)^*$	
≤2GHz	≤15mm	≤8mm	≤5mm	≤4mm	≤1.5* $\Delta z_{\text{Zoom}}(n-1)$	≥30mm
2-3GHz	≤12mm	≤5mm	≤5mm	≤4mm	≤1.5* $\Delta z_{\text{Zoom}}(n-1)$	≥30mm
3-4GHz	≤12mm	≤5mm	≤4mm	≤3mm	≤1.5* $\Delta z_{\text{Zoom}}(n-1)$	≥28mm
4-5GHz	≤10mm	≤4mm	≤3mm	≤2.5mm	≤1.5* $\Delta z_{\text{Zoom}}(n-1)$	≥25mm
5-6GHz	≤10mm	≤4mm	≤2mm	≤2mm	≤1.5* $\Delta z_{\text{Zoom}}(n-1)$	≥22mm

3.2 Spatial Peak SAR Evaluations

The spatial peak SAR - value for 1 and 10 g is evaluated after the Cube measurements have been done. The basis of the evaluation are the SAR values measured at the points of the fine cube grid consisting of 5 x 5 x 7 points(with 8mm horizontal resolution) or 7 x 7 x 7 points(with 5mm horizontal resolution) or 8 x 8 x 7 points(with 4mm horizontal resolution). The algorithm that finds the maximal averaged volume is separated into three different stages.

- The data between the dipole center of the probe and the surface of the phantom are extrapolated. This data cannot be measured since the center of the dipole is 2.7 mm away from the tip of the probe and the distance between the surface and the lowest measuring point is about 1 mm (see probe calibration sheet). The extrapolated data from a cube measurement can be visualized by selecting 'Graph Evaluated'.
- The maximum interpolated value is searched with a straight-forward algorithm. Around this maximum the SAR - values averaged over the spatial volumes (1g or 10 g) are computed using the 3d-spline interpolation algorithm. If the volume cannot be evaluated (i.e., if a part of the grid was cut off by the boundary of the measurement area) the evaluation will be started on the corners of the bottom plane of the cube.
- All neighboring volumes are evaluated until no neighboring volume with a higher average value is found.

Extrapolation

The extrapolation is based on a least square algorithm [W. Gander, Computermathematik, p.168-180]. Through the points in the first 3 cm along the z-axis, polynomials of order four are calculated. These polynomials are then used to evaluate the points between the surface and the probe tip. The points, calculated from the surface, have a distance of 1 mm from each other.

Interpolation

The interpolation of the points is done with a 3d-Spline. The 3d-Spline is composed of three one-dimensional splines with the "Not a knot"-condition [W. Gander, Computermathematik, p.141-150] (x, y and z -direction) [Numerical Recipes in C, Second Edition, p.123ff].

Volume Averaging

At First the size of the cube is calculated. Then the volume is integrated with the trapezoidal algorithm. 8000 points (20x20x20) are interpolated to calculate the average.

Advanced Extrapolation

DASY5 uses the advanced extrapolation option which is able to compensate boundary effects on E-field probes.

3.3 Data Storage and Evaluation

Data Storage

The DASY5 software stores the acquired data from the data acquisition electronics as raw data (in microvolt readings from the probe sensors), together with all necessary software parameters for the data evaluation (probe calibration data, liquid parameters and device frequency and modulation data) in measurement files with the extension "DAE4". The software evaluates the desired unit and format for output each time the data is visualized or exported. This allows verification of the complete software setup even after the measurement and allows correction of incorrect parameter settings. For example, if a measurement has been performed with a wrong crest factor parameter in the device setup, the parameter can be corrected afterwards and the data can be re-evaluated.

The measured data can be visualized or exported in different units or formats, depending on the selected probe type ([V/m], [A/m], [°C], [mW/g], [mW/cm²], [dBrel], etc.). Some of these units are not available in certain situations or show meaningless results, e.g., a SAR output in a lossless media will always be zero. Raw data can also be exported to perform the evaluation with other software packages.

Data Evaluation by SEMCAD

The SEMCAD software automatically executes the following procedures to calculate the field units from the microvolt readings at the probe connector. The parameters used in the evaluation are stored in the configuration modules of the software:

Probe parameters:	- Sensitivity	Norm _i , a _{i0} , a _{i1} , a _{i2}
	- Conversion factor	ConvF _i
	- Diode compression point	Dcpi
Device parameters:	- Frequency	f
	- Crest factor	cf
Media parameters:	- Conductivity	σ
	- Density	ρ

These parameters must be set correctly in the software. They can be found in the component documents or they can be imported into the software from the configuration files issued for the DASY5 components. In the direct measuring mode of the multimeter option, the parameters of the actual system setup are used. In the scan visualization and export modes, the parameters stored in the corresponding document files are used.

The first step of the evaluation is a linearization of the filtered input signal to account for the compression characteristics of the detector diode. The compensation depends on the input signal, the diode type and the DC-transmission factor from the diode to the evaluation electronics.

If the exciting field is pulsed, the crest factor of the signal must be known to correctly compensate for peak power. The formula for each channel can be given as:

$$V_i = U_i + U_i^2 \cdot cf/dcp_i$$

with	V _i	= compensated signal of channel i	(i = x, y, z)
	U _i	= input signal of channel i	(i = x, y, z)
	cf	= crest factor of exciting field (DASY parameter)	
	dcp _i	= diode compression point	(DASY parameter)

From the compensated input signals the primary field data for each channel can be evaluated:

$$\begin{aligned} \text{E-field probes:} \quad E_i &= (V_i / \text{Norm}_i \cdot \text{ConvF})^{1/2} \\ \text{H-field probes:} \quad H_i &= (V_i)^{1/2} \cdot (a_{i0} + a_{i1}f + a_{i2}f^2)/f \end{aligned}$$

with V_i = compensated signal of channel i (i = x, y, z)
 Norm_i = sensor sensitivity of channel i (i = x, y, z)
[mV/(V/m)²] for E-field Probes
ConvF = sensitivity enhancement in solution
 a_{ij} = sensor sensitivity factors for H-field probes
f = carrier frequency [GHz]
 E_i = electric field strength of channel i in V/m
 H_i = magnetic field strength of channel i in A/m

The RSS value of the field components gives the total field strength (Hermitian magnitude):

$$E_{\text{tot}} = (E_x^2 + E_y^2 + E_z^2)^{1/2}$$

The primary field data are used to calculate the derived field units.

$$\text{SAR} = (E_{\text{tot}}^2 \cdot \sigma) / (\rho \cdot 1000)$$

with SAR = local specific absorption rate in mW/g
 E_{tot} = total field strength in V/m
 σ = conductivity in [mho/m] or [Siemens/m]
 ρ = equivalent tissue density in g/cm³

Note that the density is normally set to 1 (or 1.06), to account for actual brain density rather than the density of the simulation liquid. The power flow density is calculated assuming the excitation field to be a free space field.

$$P_{\text{pwe}} = E_{\text{tot}}^2 / 3770 \quad \text{or} \quad P_{\text{pwe}} = H_{\text{tot}}^2 \cdot 37.7$$

with P_{pwe} = equivalent power density of a plane wave in mW/cm²
 E_{tot} = total electric field strength in V/m
 H_{tot} = total magnetic field strength in A/m

4 System Verification Procedure

4.1 Tissue Verification

The simulating liquids should be checked at the beginning of a series of SAR measurements to determine if the dielectric parameters are within the tolerances of the specified target values. The measured conductivity and relative permittivity should be within $\pm 5\%$ of the target values.

The following materials are used for producing the tissue-equivalent materials.

Ingredients (% of weight)	Body Tissue					
	MSL450	MSL835	MSL1750	MSL1900	MSL2450	MSL2600
Frequency Band (MHz)						
Water	51.16	52.4	69.91	69.91	73.2	64.493
Salt (NaCl)	1.49	1.40	0.13	0.13	0.04	0.024
Sugar	46.78	45.0	0.0	0.0	0.0	0.0
HEC	0.52	1.0	0.0	0.0	0.0	0.0
Bactericide	0.05	0.1	0.0	0.0	0.0	0.0
Triton X-100	0.0	0.0	0.0	0.0	0.0	0.0
DGBE	0.0	0.0	29.96	29.96	26.7	32.252

Table 4: Tissue Dielectric Properties

Salt: 99+% Pure Sodium Chloride; Sugar: 98+% Pure Sucrose; Water: De-ionized, 16M Ω + resistivity
 HEC: Hydroxyethyl Cellulose; DGBE: 99+% Di(ethylene glycol) butyl ether, [2-(2-butoxyethoxy)ethanol]
 Triton X-100(ultra pure): Polyethylene glycol mono [4-(1,1,3,3-tetramethylbutyl)phenyl]ether

Tissue Type	Measured Frequency (MHz)	Target Tissue		Measured Tissue		Liquid Temp.	Test Date
		ϵ_r (+/-5%)	σ (S/m) (+/-5%)	ϵ_r	σ (S/m)		
835B	825	55.20 (52.44~57.96)	0.97 (0.92~1.02)	53.56	0.962	21.4°C	2014/10/17
	835	55.20 (52.44~57.96)	0.97 (0.92~1.02)	53.45	0.972		
	850	55.20 (52.44~57.96)	0.99 (0.94~1.04)	53.28	0.987		
1750B	1710	53.50 (50.83~56.18)	1.46 (1.39~1.53)	51.58	1.498	21.4°C	2014/10/19
	1730	53.50 (50.83~56.18)	1.48 (1.41~1.55)	51.55	1.517		
	1750	53.40 (50.73~56.07)	1.49 (1.42~1.56)	51.51	1.531		
	1800	53.30 (50.64~55.97)	1.52 (1.44~1.60)	51.41	1.562		
1900B	1850	53.30 (50.64~55.97)	1.52 (1.44~1.60)	51.18	1.457	21.4°C	2014/10/15
	1880	53.30 (50.64~55.97)	1.52 (1.44~1.60)	51.10	1.487		
	1900	53.30 (50.64~55.97)	1.52 (1.44~1.60)	50.87	1.513		
	1910	53.30 (50.64~55.97)	1.52 (1.44~1.60)	50.79	1.525		
2600B	2510	52.62 (49.99~55.25)	2.03 (1.93~2.13)	51.26	2.079	21.4°C	2014/10/23
	2535	52.59 (49.96~55.22)	2.07 (1.97~2.17)	51.52	2.105		
	2560	52.57 (49.94~55.20)	2.09 (1.99~2.19)	51.41	2.130		
	2600	52.50 (49.88~55.13)	2.16 (2.05~2.27)	51.27	2.183		
ϵ_r = Relative permittivity, σ = Conductivity							

Table 5: Measured Tissue Parameter

Note: 1) The dielectric parameters of the tissue-equivalent liquid should be measured under similar ambient conditions and within 2 °C of the conditions expected during the SAR evaluation to satisfy protocol requirements.

2) KDB 865664 was ensured to be applied for probe calibration frequencies greater than or equal to 50MHz of the EUT frequencies.

3) The above measured tissue parameters were used in the DASY software to perform interpolation via the DASY software to determine actual dielectric parameters at the test frequencies. The SAR test plots may slightly differ from the table above since the DASY rounds to three significant digits.

4.2 System Check

The system check is performed for verifying the accuracy of the complete measurement system and performance of the software. The system check is performed with tissue equivalent material according to IEEE P1528 (described above). The following table shows system check results for all frequency bands and tissue liquids used during the tests(Graphic Plot(s) see Appendix A).

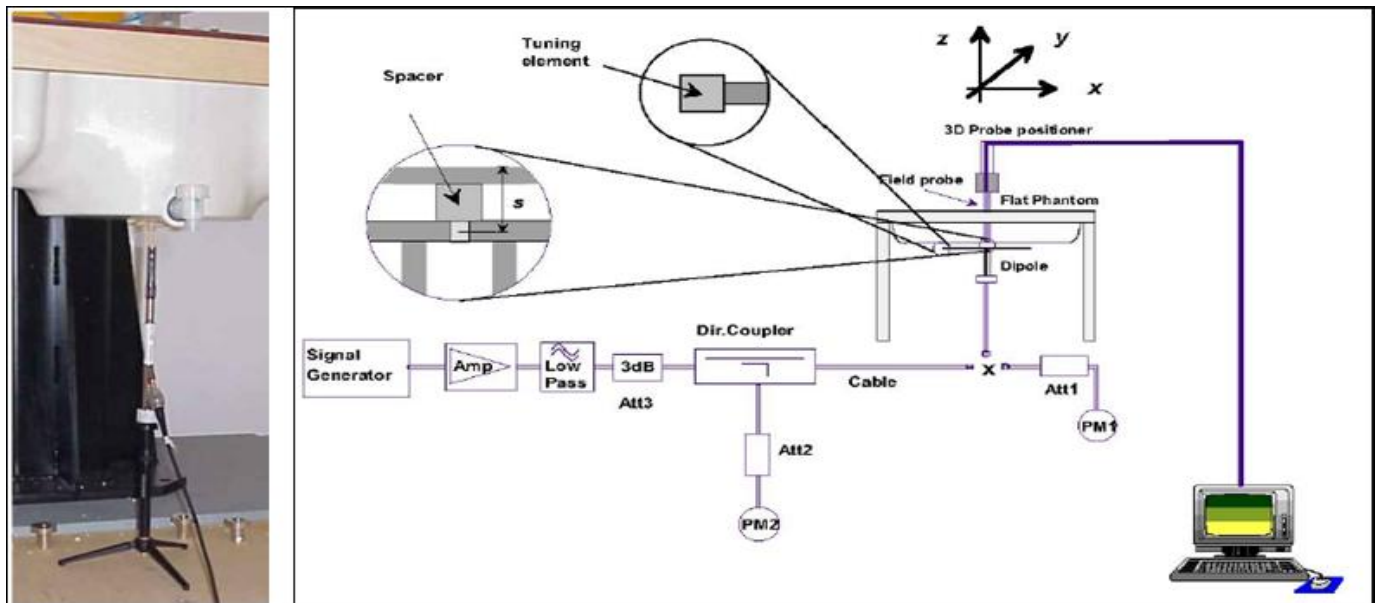
System Check (MHz)	Target SAR (1W) (+/-10%)		Measured SAR (Normalized to 1W)		Liquid Temp.	Test Date
	1-g (mW/g)	10-g (mW/g)	1-g (mW/g)	10-g (mW/g)		
835B	9.42 (8.48~10.36)	6.19 (5.57~6.80)	9.12	6.00	21.4°C	2014/10/17
1750B	36.3 (32.67~39.93)	19.5 (17.55~21.45)	38.96	20.80	21.4°C	2014/10/19
1900B	40.40 (36.36~44.44)	21.30 (19.17~23.43)	41.20	21.28	21.4°C	2014/10/15
2600B	57.6 (51.84~63.36)	25.5 (22.95~28.05)	58.40	25.52	21.4°C	2014/10/23

Table 6: System Check Results

4.3 System check Procedure

The system check is performed by using a system check dipole which is positioned parallel to the planar part of the SAM phantom at the reference point. The distance of the dipole to the SAM phantom is determined by a plexiglass spacer. The dipole is connected to the signal source consisting of signal generator and amplifier via a directional coupler, N-connector cable and adaption to SMA. It is fed with a power of 250 mW(below 5GHz) or 100mW(above 5GHz). To adjust this power a power meter is used. The power sensor is connected to the cable before the system check to measure the power at this point and do adjustments at the signal generator. At the outputs of the directional coupler both return loss as well as forward power are controlled during the system check to make sure that emitted power at the dipole is kept constant. This can also be checked by the power drift measurement after the test (result on plot).

System check results have to be equal or near the values determined during dipole calibration (target SAR in table above) with the relevant liquids and test system.



5 SAR measurement variability and uncertainty

5.1 SAR measurement variability

Per KDB865664 D01 SAR measurement 100 MHz to 6 GHz v01r03, SAR measurement variability must be assessed for each frequency band, which is determined by the SAR probe calibration point and tissue-equivalent medium used for the device measurements. The additional measurements are repeated after the completion of all measurements requiring the same head or body tissue-equivalent medium in a frequency band. The test device should be returned to ambient conditions (normal room temperature) with the battery fully charged before it is re-mounted on the device holder for the repeated measurement(s) to minimize any unexpected variations in the repeated results.

- 1) Repeated measurement is not required when the original highest measured SAR is < 0.80 W/kg; steps 2) through 4) do not apply.
- 2) When the original highest measured SAR is ≥ 0.80 W/kg, repeat that measurement once.
- 3) Perform a second repeated measurement only if the ratio of largest to smallest SAR for the original and first repeated measurements is > 1.20 or when the original or repeated measurement is ≥ 1.45 W/kg (~ 10% from the 1-g SAR limit).
- 4) Perform a third repeated measurement only if the original, first or second repeated measurement is ≥ 1.5 W/kg and the ratio of largest to smallest SAR for the original, first and second repeated measurements is > 1.20 .

The same procedures should be adapted for measurements according to extremity and occupational exposure limits by applying a factor of 2.5 for extremity exposure and a factor of 5 for occupational exposure to the corresponding SAR thresholds.

The detailed repeated measurement results are shown in Section 7.2.

5.2 SAR measurement uncertainty

Per KDB865664 D01 SAR Measurement 100 MHz to 6 GHz v01r03, when the highest measured 1-g SAR within a frequency band is < 1.5 W/kg, the extensive SAR measurement uncertainty analysis described in IEEE Std 1528-2003 is not required in SAR reports submitted for equipment approval. The equivalent ratio (1.5/1.6) is applied to extremity and occupational exposure conditions.

6 SAR Test Configuration

6.1 GSM Test Configuration

SAR tests for GSM850 and GSM1900, a communication link is set up with a base station by air link. Using CMU200 the power lever is set to “5” and “0” in SAR of GSM850 and GSM1900. The tests in the band of GSM850 and GSM1900 are performed in the mode of GPRS/EGPRS function. Since the GPRS class is 12 for this EUT, it has at most 4 timeslots in uplink and at most 4 timeslots in downlink, the maximum total timeslot is 5. The EGPRS class is 12 for this EUT, it has at most 4 timeslots in uplink, and at most 4 timeslots in downlink, the maximum total timeslot is 5.

When SAR tests for EGPRS mode is necessary, GMSK modulation should be used to minimize SAR measurement error due to higher peak-to-average power (PAR) ratios inherent in 8-PSK.

According to specification 3GPP TS 51.010, the maximum power of the GSM can do the power reduction for the multi-slot.

The allowed power reduction in the multi-slot configuration is as following:

Number of timeslots in uplink assignment		Reduction of maximum output power (dB)		
Band	Time Slots	GPRS (GMSK)	EGPRS (GMSK)	EGPRS (8PSK)
GSM850	1 TX slot	0	0	0
	2 TX slots	2	2	2
	3 TX slots	4	4	4
	4 TX slots	6	6	6
GSM1900	1 TX slot	0	0	0
	2 TX slots	2	2	2
	3 TX slots	4	4	4
	4 TX slots	6	6	6

Table 7: The allowed power reduction in the multi-slot configuration of GSM

6.2 UMTS Test Configuration

1) Output Power Verification

Maximum output power is verified on the high, middle and low channels according to procedures described in section 5.2 of 3GPP TS 34.121, using the appropriate RMC or AMR with TPC (transmit power control) set to all “1’s” for WCDMA/HSDPA or by applying the required inner loop power control procedures to maintain maximum output power while HSUPA is active. Results for all applicable physical channel configurations (DPCCH, DPDCHn and spreading codes, HSDPA, HSPA) are required in the SAR report. All configurations that are not supported by the handset or cannot be measured due to technical or equipment limitations must be clearly identified.

2) WCDMA

a. Body SAR Measurements

SAR for body-worn accessory configurations is measured using a 12.2 kbps RMC with TPC bits configured to all “1’s”. The 3G SAR test reduction procedure is applied to other spreading codes and multiple DPDCHn configurations supported by the handset with 12.2 kbps RMC as the primary mode

3) HSDPA

SAR for body exposure configurations is measured according to the “Body SAR Measurements” procedures of 3G device. When the maximum output power and tune-up tolerance specified for production units in a secondary mode is $\leq \frac{1}{4}$ dB higher than the primary mode or when the highest reported SAR of the primary mode is scaled by the ratio of specified maximum output power and tune-up tolerance of secondary to primary mode and the adjusted SAR is ≤ 1.2 W/kg, SAR measurement is not required for the secondary mode. This is referred to as the 3G SAR test reduction procedure in the following SAR test guidance, where the primary mode is identified in the applicable wireless mode test procedures and the secondary mode is wireless mode being considered for SAR test reduction by that procedure. When the 3G SAR test reduction procedure is not satisfied, it is identified as “otherwise” in the applicable procedures; SAR measurement is required for the secondary mode.

Per KDB941225 D01v03, the 3G SAR test reduction procedure is applied to HSDPA body configurations with 12.2 kbps RMC as the primary mode. Otherwise, SAR is measured for HSDPA using the HSDPA body SAR procedures for the highest reported SAR body exposure configuration in 12.2 kbps RMC.

HSDPA should be configured according to UE category of a test device. The number of HS-DSCH/HS-PDSCHs, HARQ processes, minimum inter-TTI interval, transport block sizes and RV coding sequence are defined by the H-set. To maintain a consistent test configuration and stable transmission condition, QPSK is used in the H-set for SAR testing. HS-DPCCH should be configured with a CQI feedback cycle of 4ms with a CQI repetition factor of 2 to maintain a constant rate of active CQI slots. The β_c and β_d gain factors for DPCCH and DPDCH were set according to the values in the below table, β_{hs} for HS-DPCCH is set automatically to the correct value when ΔACK , $\Delta NACK$, $\Delta CQI = 8$. The variation of the β_c/β_d ratio causes a power reduction at sub-tests 2 - 4.

Sub-test ¹	β_c ²	β_d ²	β_d (SF) ²	β_c/β_d ²	β_{hs} (1) ²	CM(dB)(2) ²	MPR (dB) ²
1 ²	2/15 ²	15/15 ²	64 ²	2/15 ²	4/15 ²	0.0 ²	0 ²
2 ²	12/15(3) ²	15/15(3) ²	64 ²	12/15(3) ²	24/15 ²	1.0 ²	0 ²
3 ²	15/15 ²	8/15 ²	64 ²	15/8 ²	30/15 ²	1.5 ²	0.5 ²
4 ²	15/15 ²	4/15 ²	64 ²	15/4 ²	30/15 ²	1.5 ²	0.5 ²

Note 1: ΔACK , $\Delta NACK$ and $\Delta CQI = 8$ $A_{hs} = \beta_{hs}/\beta_c = 30/15$ $\beta_{hs} = 30/15 * \beta_c$
Note 2: CM=1 for $\beta_c/\beta_d = 12/15$, $\beta_{hs}/\beta_c = 24/15$. For all other combinations of DPDCH, DPCCH and HS-DPCCH the MPR is based on the relative CM difference. This is applicable for only UEs that support HSDPA in release 6 and later releases.²
Note 3: For subtest 2 the β_c/β_d ratio of 12/15 for the TFC during the measurement period (TF1, TF0) is achieved by setting the signalled gain factors for the reference TFC (TF1, TF1) to $\beta_c = 11/15$ and $\beta_d = 15/15$ ²

Table 8: Sub-tests for UMTS Release 5 HSDPA

The measurements were performed with a Fixed Reference Channel (FRC) and H-Set 1 QPSK.

Parameter	Value
Nominal average inf. bit rate	534 kbit/s
Inter-TTI Distance	3 TTI's
Number of HARQ Processes	2 Processes
Information Bit Payload	3202 Bits
MAC-d PDU size	336 Bits
Number Code Blocks	1 Block
Binary Channel Bits Per TTI	4800 Bits
Total Available SMLs in UE	19200 SMLs
Number of SMLs per HARQ Process	9600 SMLs
Coding Rate	0.67
Number of Physical Channel Codes	5

Table 9: settings of required H-Set 1 QPSK acc. to 3GPP 34.121

HS-DSCH Category	Maximum HS-DSCH Codes Received	Minimum Inter-TTI Interval	Maximum HS-DSCH Transport Block Bits/HS-DSCH TTI	Total Soft Channel Bits
1	5	3	7298	19200
2	5	3	7298	28800
3	5	2	7298	28800
4	5	2	7298	38400
5	5	1	7298	57600
6	5	1	7298	67200
7	10	1	14411	115200
8	10	1	14411	134400
9	15	1	25251	172800
10	15	1	27952	172800
11	5	2	3630	14400
12	5	1	3630	28800
13	15	1	34800	259200
14	15	1	42196	259200
15	15	1	23370	345600
16	15	1	27952	345600

Table 10:HSDPA UE category

4) HSUPA

SAR for body exposure configurations is measured according to the “Body SAR Measurements” procedures of 3G device. When the maximum output power and tune-up tolerance specified for production units in a secondary mode is $\leq \frac{1}{4}$ dB higher than the primary mode or when the highest *reported* SAR of the primary mode is scaled by the ratio of specified maximum output power and tune-up tolerance of secondary to primary mode and the adjusted SAR is ≤ 1.2 W/kg, SAR measurement is not required for the secondary mode.

Per KDB941225 D01v03, the 3G SAR test reduction procedure is applied to HSPA (HSUPA/HSDPA with RMC) body configurations with 12.2 kbps RMC as the primary mode. Otherwise, SAR is measured for HSPA using the HSPA body SAR procedures for the highest reported body exposure SAR configuration in 12.2 kbps RMC.

Due to inner loop power control requirements in HSDPA, a commercial communication test set should be used for the output power and SAR tests. The 12.2 kbps RMC, FRC H-set 1 and E-DCH configurations for HSDPA should be configured according to the values indicated below as well as other applicable procedures described in the ‘WCDMA Handset’ and ‘Release 5 HSDPA Data Device’ sections of 3G device.

Sub-test ¹	β_c ²	β_d ²	β_d (SF) ²	β_c/β_d ²	$\beta_{hs}^{(1)}$ ²	β_{ec} ²	β_{ed} ²	β_{ec} (SF) ²	β_{ed} (code) ²	CM ⁽²⁾ ² (dB) ²	MP R ² (dB) ²	AG ⁽⁴⁾ Inde ² x ²	E-TFC I ²
1 ²	11/15 ⁽³⁾	15/15 ⁽³⁾	64 ²	11/15 ⁽³⁾	22/15 ²	209/225 ²	1039/225 ²	4 ²	1 ²	1.0 ²	0.0 ²	20 ²	75 ²
2 ²	6/15 ²	15/15 ²	64 ²	6/15 ²	12/15 ²	12/15 ²	94/75 ²	4 ²	1 ²	3.0 ²	2.0 ²	12 ²	67 ²
3 ²	15/15 ²	9/15 ²	64 ²	15/9 ²	30/15 ²	30/15 ²	$\beta_{ed1}:47/15$ $\beta_{ed2}:47/15$ ²	4 ²	2 ²	2.0 ²	1.0 ²	15 ²	92 ²
4 ²	2/15 ²	15/15 ²	64 ²	2/15 ²	4/15 ²	2/15 ²	56/75 ²	4 ²	1 ²	3.0 ²	2.0 ²	17 ²	71 ²
5 ²	15/15 ⁽⁴⁾	15/15 ⁽⁴⁾	64 ²	15/15 ⁽⁴⁾	30/15 ²	24/15 ²	134/15 ²	4 ²	1 ²	1.0 ²	0.0 ²	21 ²	81 ²
<p>Note 1: Δ ACK, Δ NACK and Δ CQI = 8 $A_{hs} = \beta_{hs}/\beta_c = 30/15$ $\beta_{hs} = 30/15 * \beta_c$</p> <p>Note 2: CM = 1 for $\beta_c/\beta_d = 12/15$, $\beta_{hs}/\beta_c = 24/15$. For all other combinations of DPDCH, DPCCH, HS-DPCCH, E-DPDCH and E-DPCCH the MPR is based on the relative CM difference²</p> <p>Note 3 : For subtest 1 the β_c/β_d ratio of 11/15 for the TFC during the measurement period (TF1, TF0) is achieved by setting the signalled gain factors for the reference TFC (TF1, TF1) to $\beta_c = 10/15$ and $\beta_d = 15/15$²</p> <p>Note 4 : For subtest 5 the β_c/β_d ratio of 15/15 for the TFC during the measurement period (TF1, TF0) is achieved by setting the signalled gain factors for the reference TFC (TF1, TF1) to $\beta_c = 14/15$ and $\beta_d = 15/15$²</p> <p>Note 5 : Testing UE using E-DPDCH Physical Layer category 1 Sub-test 3 is not required according to TS 25.306 Table 5.1g²</p> <p>Note 6: β_{ed} can not be set directly; it is set by Absolute Grant Value.²</p>													

Table 11:Subtests for UMTS Release 6 HSUPA

UE E-DCH Category	Maximum E-DCH Codes Transmitted	Number of HARQ Processes	E-DCH TTI(ms)	Minimum Spreading Factor	Maximum E-DCH Transport Block Bits	Max Rate (Mbps)
1	1	4	10	4	7110	0.7296
2	2	8	2	4	2798	1.4592
	2	4	10	4	14484	
3	2	4	10	4	14484	1.4592
4	2	8	2	2	5772	2.9185
	2	4	10	2	20000	2.00
5	2	4	10	2	20000	2.00
6 (No DPDCH)	4	8	10	2SF2&2SF	11484	5.76
	4	4	2	4	20000	2.00
7 (No DPDCH)	4	8	2	2SF2&2SF	22996	?
	4	4	10	4	20000	?

NOTE: When 4 codes are transmitted in parallel, two codes shall be transmitted with SF2 and two with SF4. UE categories 1 to 6 support QPSK only. UE category 7 supports QPSK and 16QAM. (TS25.306-7.3.0).

Table 12:HSUPA UE category

6.3 LTE Test Configuration

SAR for LTE band exposure configurations is measured according to the procedures of KDB 941225 D05 SAR for LTE Devices v02r03. The CMW500 WideBand Radio Communication Tester was used for LTE output power measurements and SAR testing. Closed loop power control was used so the UE transmits with maximum output power during SAR testing. SAR test were performed with the same number of RB and RB offsets transmitting on all TTI frames(Maximum TTI)

1) Spectrum Plots for RB configurations

A properly configured base station simulator was used for LTE output power measurements and SAR testing. Therefore, spectrum plots for RB configurations were not required to be included in this report.

2) MPR

When MPR is implemented permanently within the UE, regardless of network requirements, only those RB configurations allowed by 3GPP for the channel bandwidth and modulation combinations may be tested with MPR active. Configurations with RB allocations less than the RB thresholds required by 3GPP must be tested without MPR.

The allowed Maximum Power Reduction (MPR) for the maximum output power due to higher order modulation and transmit bandwidth configuration (resource blocks) is specified in Table 6.2.3-1 of the 3GPP TS36.101:

Table 6.2.3-1: Maximum Power Reduction (MPR) for Power Class 3

Modulation	Channel bandwidth / Transmission bandwidth (N_{RB})						MPR (dB)
	1.4 MHz	3.0 MHz	5 MHz	10 MHz	15 MHz	20 MHz	
QPSK	> 5	> 4	> 8	> 12	> 16	> 18	≤ 1
16 QAM	≤ 5	≤ 4	≤ 8	≤ 12	≤ 16	≤ 18	≤ 1
64 QAM	> 5	> 4	> 8	> 12	> 16	> 18	≤ 2

The LTE Band V MPR of the device is as below:

Modulation	Channel bandwidth / Transmission bandwidth configuration [RB]		MPR
	5	10	
	MHz	MHz	
QPSK	≤ 8	≤ 12	0
QPSK	> 8	> 12	1
16 QAM	≤ 8	≤ 12	0
16 QAM	> 8	> 12	1

The LTE Band IV MPR of the device is as below:

Modulation	Channel bandwidth / Transmission bandwidth configuration [RB]				MPR
	5	10	15	20	
	MHz	MHz	MHz	MHz	
QPSK	≤8	≤ 12	≤16	≤ 18	0
QPSK	>8	> 12	>16	> 18	1
16 QAM	≤8	≤ 12	≤16	≤ 18	0
16 QAM	>8	> 12	>16	> 18	2

The LTE Band II MPR of the device is as below:

Modulation	Channel bandwidth / Transmission bandwidth configuration [RB]				MPR
	5	10	15	20	
	MHz	MHz	MHz	MHz	
QPSK	≤8	≤ 12	≤16	≤ 18	0
QPSK	>8	> 12	>16	> 18	1
16 QAM	≤8	≤ 12	≤16	≤ 18	0.5
16 QAM	>8	> 12	>16	> 18	2

The LTE Band VII MPR of the device is as below:

Modulation	Channel bandwidth / Transmission bandwidth configuration [RB]				MPR
	5	10	15	20	
	MHz	MHz	MHz	MHz	
QPSK	≤8	≤ 12	≤16	≤ 18	0
QPSK	>8	> 12	>16	> 18	1
16 QAM	≤8	≤ 12	≤16	≤ 18	0
16 QAM	>8	> 12	>16	> 18	1

3) A-MPR

A-MPR(Additional MPR) has been disabled for all SAR tests by using Network Signalling Value of "NS_01" on the base station simulator.

4) LTE procedures for SAR testing

A) Largest channel bandwidth standalone SAR test requirements

i) QPSK with 1 RB allocation

Start with the largest channel bandwidth and measure SAR for QPSK with 1 RB allocation, using the RB offset and required test channel combination with the highest maximum output power for RB offsets at the upper edge, middle and lower edge of each required test channel. When the reported SAR is ≤ 0.8 W/kg, testing of the remaining RB offset configurations and required test channels is not required for 1 RB allocation; otherwise, SAR is required for the remaining required test channels and only for the RB offset configuration with the highest output power for that channel. When the reported SAR of a required test channel is > 1.45 W/kg, SAR is required for all three RB offset configurations for that required test channel.

ii) QPSK with 50% RB allocation

The procedures required for 1 RB allocation in i) are applied to measure the SAR for QPSK with 50% RB allocation.

iii) QPSK with 100% RB allocation

For QPSK with 100% RB allocation, SAR is not required when the highest maximum output power for 100 % RB allocation is less than the highest maximum output power in 50% and 1 RB allocations and the highest reported SAR for 1 RB and 50% RB allocation in i) and ii) are ≤ 0.8 W/kg. Otherwise, SAR is measured for the highest output power channel and if the reported SAR is > 1.45 W/kg, the remaining required test channels must also be tested.

iv) Higher order modulations

For each modulation besides QPSK; e.g., 16-QAM, 64-QAM, apply the QPSK procedures in above sections to determine the QAM configurations that may need SAR measurement. For each configuration identified as required for testing, SAR is required only when the highest maximum output power for the configuration in the higher order modulation is $> \frac{1}{2}$ dB higher than the same configuration in QPSK or when the reported SAR for the QPSK configuration is > 1.45 W/kg.

B) Other channel bandwidth standalone SAR test requirements

For the other channel bandwidths used by the device in a frequency band, apply all the procedures required for the largest channel bandwidth in section A) to determine the channels and RB configurations that need SAR testing and only measure SAR when the highest maximum output power of a configuration requiring testing in the smaller channel bandwidth is $> \frac{1}{2}$ dB higher than the equivalent channel configurations in the largest channel bandwidth configuration or the reported SAR of a configuration for the largest channel bandwidth is > 1.45 W/kg.

7 SAR Measurement Results

7.1 Conducted power measurements

For the measurements a Rohde & Schwarz Radio Communication Tester CMU200&CMW500 was used. SAR drift measured at the same position in liquid before and after each SAR test as below 7.2 chapter.

Note: CMU200 measures GSM peak and average output power for active timeslots. For SAR the timebased average power is relevant. The difference in between depends on the duty cycle of the TDMA signal :

No. of timeslots	1	2	3	4
Duty Cycle	1:8.3	1:4.1	1:2.77	1:2.08
timebased avg. power compared to slotted avg. power	-9.19dB	-6.13dB	-4.42dB	-3.18dB

The signalling modes differ as follows:

mode	coding scheme	modulation
GPRS	CS1 to CS4	GMSK
EDGE	MCS1 to MCS4	GMSK
EDGE	MCS5 to MCS9	8PSK

Apart from modulation change (GMSK/8PSK) coding schemes differ in code rate without influence on the RF signal. Therefore one coding scheme per mode was selected for conducted power measurements.

7.1.1 Conducted power measurements of GSM850

GSM850		Burst-Averaged output Power (dBm)				Division Factors	Frame-Averaged output Power (dBm)			
		Tune-up	128CH	190CH	251CH		Tune-up	128CH	190CH	251CH
GPRS/EDGE (GMSK)	1 Tx Slot	33.00	32.01	31.97	32.18	-9.19	23.81	22.82	22.78	22.99
	2 Tx Slots	31.00	30.07	30.00	30.40	-6.13	24.87	23.94	23.87	24.27
	3 Tx Slots	29.00	28.05	27.98	28.43	-4.42	24.58	23.63	23.56	24.01
	4 Tx Slots	27.00	25.99	25.96	26.34	-3.18	23.82	22.81	22.78	23.16
EDGE (8PSK)	1 Tx Slot	26.80	25.88	25.91	25.92	-9.19	17.61	16.69	16.72	16.73
	2 Tx Slots	24.80	23.76	23.71	23.78	-6.13	18.67	17.63	17.58	17.65
	3 Tx Slots	22.80	21.52	21.48	21.53	-4.42	18.38	17.10	17.06	17.11
	4 Tx Slots	20.80	19.09	19.14	19.07	-3.18	17.62	15.91	15.96	15.89

Table 13:Conducted power measurement results of GSM850

Note:

- 1) The conducted power of GSM850 is measured with RMS detector.
- 2) Frame-averaged output power was calculated from the measured burst-averaged output power by converting the slot powers into linear units and calculating the energy over 8 timeslots.
- 3) Per KDB941225 D01v03, SAR test reduction for GPRS and EDGE modes is determined by the source-based time-averaged output power specified for production units, including tune-up tolerance. The data mode with highest specified time-averaged output power should be tested for SAR compliance in the applicable exposure conditions. For modes with the same specified maximum output power and tolerance, the higher number time-slot configuration should be tested.

7.1.2 Conducted power measurements of GSM1900

GSM1900		Burst-Averaged output Power (dBm)				Division Factors	Frame-Averaged output Power (dBm)			
		Tune-up	512CH	661CH	810CH		Tune-up	512CH	661CH	810CH
GPRS/ EDGE (GMSK)	1 Tx Slot	30.00	29.15	29.17	29.19	-9.19	20.81	19.96	19.98	20.00
	2 Tx Slots	28.00	27.10	27.22	27.24	-6.13	21.87	20.97	21.09	21.11
	3 Tx Slots	26.00	25.07	25.09	25.19	-4.42	21.58	20.65	20.67	20.77
	4 Tx Slots	24.00	23.07	23.12	23.20	-3.18	20.82	19.89	19.94	20.02
EDGE (8PSK)	1 Tx Slot	25.80	24.94	24.93	24.77	-9.19	16.61	15.75	15.74	15.58
	2 Tx Slots	23.80	22.82	22.78	22.68	-6.13	17.67	16.69	16.65	16.55
	3 Tx Slots	21.80	20.61	20.54	20.49	-4.42	17.38	16.19	16.12	16.07
	4 Tx Slots	19.80	18.34	18.22	18.20	-3.18	16.62	15.16	15.04	15.02

Table 14: Conducted power measurement results of GSM1900

Note:

- 1) The conducted power of GSM1900 is measured with RMS detector.
- 2) Frame-averaged output power was calculated from the measured burst-averaged output power by converting the slot powers into linear units and calculating the energy over 8 timeslots.
- 3) Per KDB941225 D01v03, SAR test reduction for GPRS and EDGE modes is determined by the source-based time-averaged output power specified for production units, including tune-up tolerance. The data mode with highest specified time-averaged output power should be tested for SAR compliance in the applicable exposure conditions. For modes with the same specified maximum output power and tolerance, the higher number time-slot configuration should be tested.

7.1.3 Conducted power measurements of UMTS Band V

UMTS Band V		Tune-up	Conducted Power (dBm)		
			4132CH	4182CH	4233CH
WCDMA	12.2kbps RMC	23.00	22.60	22.67	22.55
	64kbps RMC	23.00	22.58	22.65	22.53
	144kbps RMC	23.00	22.56	22.63	22.51
	384kbps RMC	23.00	22.55	22.62	22.50
HSDPA	Subtest 1	23.00	22.49	22.65	22.49
	Subtest 2	23.00	22.21	22.34	22.22
	Subtest 3	22.50	21.54	21.65	21.54
	Subtest 4	22.50	21.52	21.62	21.50
HSUPA	Subtest 1	22.00	21.52	21.49	21.29
	Subtest 2	20.00	19.25	19.36	19.31
	Subtest 3	20.00	19.70	19.81	18.64
	Subtest 4	19.00	18.63	18.76	18.56
	Subtest 5	22.00	21.75	21.86	21.62

Table 15: Conducted power measurement results of UMTS Band V

Note:

- 1) The conducted power of UMTS Band V is measured with RMS detector.
- 2) Per KDB941225 D01v03, When the maximum output power and tune-up tolerance specified for production units in a secondary mode is $\leq \frac{1}{4}$ dB higher than the primary mode or when the highest *reported* SAR of the primary mode is scaled by the ratio of specified maximum output power and tune-up tolerance of secondary to primary mode and the adjusted SAR is ≤ 1.2 W/kg, SAR measurement is not required for the secondary mode.

7.1.4 Conducted power measurements of UMTS Band IV

UMTS Band IV		Tune-up	Conducted Power (dBm)		
			1312CH	1413CH	1513CH
WCDMA	12.2kbps RMC	23.00	22.45	22.46	22.59
	64kbps RMC	23.00	22.45	22.44	22.37
	144kbps RMC	23.00	22.42	22.43	22.34
	384kbps RMC	23.00	22.40	22.42	22.34
HSDPA	Subtest 1	23.00	22.40	22.40	22.35
	Subtest 2	23.00	22.12	22.15	22.08
	Subtest 3	22.50	21.53	21.57	21.48
	Subtest 4	22.50	21.53	21.54	21.47
HSUPA	Subtest 1	22.00	21.28	21.50	21.31
	Subtest 2	20.00	19.09	18.33	19.16
	Subtest 3	20.00	19.69	19.55	19.35
	Subtest 4	19.00	18.39	18.56	18.46
	Subtest 5	22.00	20.64	21.66	21.61

Table 16: Conducted power measurement results of UMTS Band IV

Note:

- 1) The conducted power of UMTS Band IV is measured with RMS detector.
- 2) Per KDB941225 D01v03, When the maximum output power and tune-up tolerance specified for production units in a secondary mode is $\leq \frac{1}{4}$ dB higher than the primary mode or when the highest *reported* SAR of the primary mode is scaled by the ratio of specified maximum output power and tune-up tolerance of secondary to primary mode and the adjusted SAR is ≤ 1.2 W/kg, SAR measurement is not required for the secondary mode .

7.1.5 Conducted power measurements of UMTS Band II

UMTS Band II		Tune-up	Conducted Power (dBm)		
			9262CH	9400CH	9538CH
WCDMA	12.2kbps RMC	23.00	22.51	22.59	22.48
	64kbps RMC	23.00	22.54	22.59	22.48
	144kbps RMC	23.00	22.50	22.56	22.45
	384kbps RMC	23.00	22.54	22.59	22.49
HSDPA	Subtest 1	23.00	22.54	22.60	22.47
	Subtest 2	23.00	22.32	22.34	22.23
	Subtest 3	22.50	21.70	21.77	21.64
	Subtest 4	22.50	21.69	21.73	21.61
HSUPA	Subtest 1	22.00	21.16	21.59	21.30
	Subtest 2	20.00	19.22	19.10	19.29
	Subtest 3	20.00	19.91	19.79	19.62
	Subtest 4	19.00	18.52	18.67	18.59
	Subtest 5	22.00	21.84	21.88	21.78

Table 17: Conducted power measurement results of UMTS Band II

Note:

- 1) The conducted power of UMTS Band II is measured with RMS detector.
- 2) Per KDB941225 D01v03, When the maximum output power and tune-up tolerance specified for production units in a secondary mode is $\leq \frac{1}{4}$ dB higher than the primary mode or when the highest *reported* SAR of the primary mode is scaled by the ratio of specified maximum output power and tune-up tolerance of secondary to primary mode and the adjusted SAR is ≤ 1.2 W/kg, SAR measurement is not required for the secondary mode.

7.1.6 Conducted power measurements of LTE Band V

Bandwidth	Modulation	Tune-up	RB size	RB offset	Channel	Channel	Channel
					20425	20525	20625
5MHz	QPSK	23.50	1	0	22.73	22.90	22.49
		23.50	1	13	22.48	22.93	22.17
		23.50	1	24	22.49	23.04	22.16
		22.50	12	0	21.53	21.55	21.23
		22.50	12	6	21.72	21.83	21.35
		22.50	12	13	21.52	21.60	21.18
		22.50	25	0	21.45	21.51	21.27
	16QAM	23.50	1	0	22.74	22.78	22.58
		23.50	1	13	22.48	22.83	22.31
		23.50	1	24	22.47	22.93	22.51
		22.50	12	0	21.37	21.35	21.23
		22.50	12	6	21.55	21.63	21.35
		22.50	12	13	21.35	21.39	21.18
		22.50	25	0	21.26	21.31	21.22
Bandwidth	Modulation	Tune-up	RB size	RB offset	Channel	Channel	Channel
					20450	20525	20600
10MHz	QPSK	23.50	1	0	22.81	23.08	23.43
		23.50	1	25	22.96	23.21	22.77
		23.50	1	49	23.04	23.23	22.51
		22.50	25	0	21.60	21.57	21.49
		22.50	25	13	21.79	21.77	21.69
		22.50	25	25	21.52	21.65	21.37
		22.50	50	0	21.56	21.67	21.56
	16QAM	23.50	1	0	22.83	22.82	23.30
		23.50	1	25	22.73	23.21	22.63
		23.50	1	49	22.86	23.21	22.38
		22.50	25	0	21.38	21.58	21.63
		22.50	25	13	21.55	21.77	21.69
		22.50	25	25	21.27	21.64	21.38
		22.50	50	0	21.30	21.65	21.53

Table 18: Conducted power measurement results of LTE Band V

7.1.7 Conducted power measurements of LTE Band IV

Bandwidth	Modulation	Tune-up	RB size	RB offset	Channel	Channel	Channel
					19975	20175	20375
5MHz	QPSK	23.00	1	0	22.21	22.32	22.40
		23.00	1	13	21.98	22.25	22.27
		23.00	1	24	22.18	22.28	22.74
		22.00	12	0	20.84	20.97	21.14
		22.00	12	6	20.95	21.21	21.25
		22.00	12	13	20.72	21.31	21.15
		22.00	25	0	20.73	21.29	21.25
	16QAM	23.00	1	0	21.30	21.90	21.74
		23.00	1	13	21.36	22.02	21.36
		23.00	1	24	21.55	22.01	22.44
		21.00	12	0	19.60	20.24	19.62
		21.00	12	6	19.84	20.51	19.71
		21.00	12	13	19.72	20.29	19.64
		21.00	25	0	19.63	20.28	19.75
Bandwidth	Modulation	Tune-up	RB size	RB offset	Channel	Channel	Channel
					20000	20175	20350
10MHz	QPSK	23.00	1	0	22.17	22.40	22.34
		23.00	1	25	22.29	22.46	22.20
		23.00	1	49	21.83	22.36	22.68
		22.00	25	0	20.64	20.80	21.06
		22.00	25	13	20.85	21.14	21.13
		22.00	25	25	20.54	21.04	20.84
		22.00	50	0	20.62	20.97	21.00
	16QAM	23.00	1	0	21.58	22.23	21.59
		23.00	1	25	21.91	22.33	21.39
		23.00	1	49	21.66	22.25	22.06
		21.00	25	0	19.43	19.88	19.69
		21.00	25	13	19.69	20.28	19.70
		21.00	25	25	19.32	20.14	19.41
		21.00	50	0	19.44	20.07	19.59

Bandwidth	Modulation	Tune-up	RB size	RB offset	Channel	Channel	Channel
					20025	20175	20325
15MHz	QPSK	23.00	1	0	21.71	21.91	22.22
		23.00	1	38	21.67	22.29	22.07
		23.00	1	74	21.69	21.93	22.40
		22.00	36	0	20.59	20.91	20.99
		22.00	36	18	20.65	21.10	21.00
		22.00	36	39	20.67	21.04	20.64
		22.00	75	0	20.55	21.07	20.88
	16QAM	23.00	1	0	21.12	21.63	22.11
		23.00	1	38	21.07	22.05	21.68
		23.00	1	74	21.48	21.70	22.04
		21.00	36	0	19.54	20.08	20.07
		21.00	36	18	19.45	20.32	20.02
		21.00	36	39	19.47	20.19	19.60
		21.00	75	0	19.35	20.24	19.90
Bandwidth	Modulation	Tune-up	RB size	RB offset	Channel	Channel	Channel
					20050	20175	20300
20MHz	QPSK	23.00	1	0	21.86	22.44	22.62
		23.00	1	50	21.76	22.45	22.16
		23.00	1	99	22.70	22.58	21.80
		22.00	50	0	20.81	21.17	21.23
		22.00	50	25	20.52	21.24	21.07
		22.00	50	50	20.85	21.26	20.86
		22.00	100	0	20.90	21.22	21.06
	16QAM	23.00	1	0	21.75	22.27	22.57
		23.00	1	50	21.77	22.34	22.01
		23.00	1	99	22.53	22.53	21.27
		21.00	50	0	19.68	20.12	20.35
		21.00	50	25	19.70	20.31	20.10
		21.00	50	50	19.93	20.24	19.88
		21.00	100	0	19.78	20.17	20.11

Table 19: Conducted power measurement results of LTE Band IV

7.1.8 Conducted power measurements of LTE Band II

Bandwidth	Modulation	Tune-up	RB size	RB offset	Channel	Channel	Channel
					18625	18900	19175
5MHz	QPSK	23.00	1	0	22.23	22.59	22.11
		23.00	1	13	22.04	22.57	21.85
		23.00	1	24	22.59	22.38	22.54
		22.00	12	0	20.78	21.55	20.89
		22.00	12	6	21.04	21.52	21.14
		22.00	12	13	20.93	21.23	21.04
		22.00	25	0	20.80	21.30	20.89
	16QAM	22.50	1	0	21.83	22.22	21.59
		22.50	1	13	21.42	21.93	21.32
		22.50	1	24	21.92	21.53	21.83
		21.00	12	0	19.55	20.40	19.57
		21.00	12	6	19.94	20.43	19.84
		21.00	12	13	19.94	20.14	19.80
		21.00	25	0	19.67	20.21	19.53
Bandwidth	Modulation	Tune-up	RB size	RB offset	Channel	Channel	Channel
					18650	18900	19150
10MHz	QPSK	23.00	1	0	21.85	22.55	22.58
		23.00	1	25	22.55	22.51	22.16
		23.00	1	49	22.52	21.98	21.89
		22.00	25	0	20.78	21.42	20.96
		22.00	25	13	21.15	21.34	20.82
		22.00	25	25	20.97	20.89	20.40
		22.00	50	0	20.84	21.08	20.57
	16QAM	22.50	1	0	21.45	22.26	22.21
		22.50	1	25	22.08	21.98	21.55
		22.50	1	49	22.35	21.23	21.30
		21.00	25	0	19.57	20.26	19.85
		21.00	25	13	19.99	20.14	19.64
		21.00	25	25	19.87	19.69	19.22
		21.00	50	0	19.69	19.90	19.44

Bandwidth	Modulation	Tune-up	RB size	RB offset	Channel	Channel	Channel
					18675	18900	19125
15MHz	QPSK	23.00	1	0	21.71	22.55	22.46
		23.00	1	38	22.50	22.47	22.30
		23.00	1	74	22.57	21.50	21.46
		22.00	36	0	20.74	21.46	21.74
		22.00	36	18	21.22	21.29	21.41
		22.00	36	39	21.27	20.63	20.47
		22.00	75	0	20.98	21.00	20.94
	16QAM	22.50	1	0	21.20	22.39	22.19
		22.50	1	38	22.30	22.03	21.95
		22.50	1	74	21.77	21.09	21.07
		21.00	36	0	19.68	20.43	20.76
		21.00	36	18	20.20	20.22	20.40
		21.00	36	39	20.32	19.57	19.44
		21.00	75	0	19.96	19.95	19.94
Bandwidth	Modulation	Tune-up	RB size	RB offset	Channel	Channel	Channel
					18700	18900	19100
20MHz	QPSK	23.00	1	0	21.53	22.47	21.80
		23.00	1	50	22.26	22.15	22.47
		23.00	1	99	22.62	21.55	21.69
		22.00	50	0	20.80	21.35	21.05
		22.00	50	25	21.13	20.89	21.09
		22.00	50	50	21.37	20.45	20.51
		22.00	100	0	21.02	21.04	20.91
	16QAM	22.50	1	0	21.08	22.27	21.53
		22.50	1	50	22.08	21.67	22.14
		22.50	1	99	22.19	21.14	21.31
		21.00	50	0	19.62	20.19	19.99
		21.00	50	25	19.98	19.69	19.86
		21.00	50	50	20.20	19.50	19.38
		21.00	100	0	19.92	19.80	19.80

Table 20: Conducted power measurement results of LTE Band II

7.1.9 Conducted power measurements of LTE Band VII

Bandwidth	Modulation	Tune-up	RB size	RB offset	Channel	Channel	Channel
					20775	21100	21425
5MHz	QPSK	23.00	1	0	21.94	22.16	22.19
		23.00	1	13	22.04	22.30	22.33
		23.00	1	24	21.81	22.08	22.22
		22.00	12	0	20.73	20.99	21.15
		22.00	12	6	20.98	21.23	21.50
		22.00	12	13	20.75	21.09	21.30
		22.00	25	0	20.69	21.08	21.25
	16QAM	23.00	1	0	21.79	22.13	21.88
		23.00	1	13	21.88	22.29	22.02
		23.00	1	24	21.75	22.05	21.86
		22.00	12	0	20.81	21.15	20.69
		22.00	12	6	21.06	21.35	21.05
		22.00	12	13	20.84	21.22	20.86
		22.00	25	0	20.84	21.25	20.76
Bandwidth	Modulation	Tune-up	RB size	RB offset	Channel	Channel	Channel
					20800	21100	21400
10MHz	QPSK	23.00	1	0	22.32	22.58	22.30
		23.00	1	25	22.53	22.78	22.21
		23.00	1	49	22.21	22.25	21.86
		22.00	25	0	21.09	21.40	21.04
		22.00	25	13	21.35	21.69	21.12
		22.00	25	25	21.12	21.38	20.91
		22.00	50	0	21.07	21.43	20.87
	16QAM	23.00	1	0	22.13	22.43	21.85
		23.00	1	25	22.33	22.58	21.77
		23.00	1	49	22.00	22.04	21.43
		22.00	25	0	20.70	21.04	20.76
		22.00	25	13	20.96	21.32	20.83
		22.00	25	25	20.74	21.02	20.63
		22.00	50	0	20.71	21.09	20.56

Bandwidth	Modulation	Tune-up	RB size	RB offset	Channel	Channel	Channel
					20825	21100	21375
15MHz	QPSK	23.00	1	0	22.09	22.54	21.97
		23.00	1	38	22.38	22.61	22.15
		23.00	1	74	22.03	21.96	21.49
		22.00	36	0	21.11	21.42	21.11
		22.00	36	18	21.27	21.46	21.22
		22.00	36	39	21.16	21.29	20.77
		22.00	75	0	21.11	21.41	21.01
	16QAM	23.00	1	0	21.79	22.34	21.76
		23.00	1	38	22.15	22.41	21.89
		23.00	1	74	21.83	21.82	21.24
		22.00	36	0	20.86	21.15	21.32
		22.00	36	18	21.03	21.19	21.38
		22.00	36	39	20.94	21.03	20.94
		22.00	75	0	20.86	21.16	21.15
Bandwidth	Modulation	Tune-up	RB size	RB offset	Channel	Channel	Channel
					20850	21100	21350
20MHz	QPSK	23.00	1	0	21.99	22.37	22.05
		23.00	1	50	22.19	22.39	22.07
		23.00	1	99	22.17	22.02	21.61
		22.00	50	0	20.94	21.46	21.01
		22.00	50	25	21.02	21.39	21.00
		22.00	50	50	21.05	21.23	20.75
		22.00	100	0	20.91	21.35	20.83
	16QAM	23.00	1	0	22.26	22.83	22.41
		23.00	1	50	22.56	22.69	22.37
		23.00	1	99	22.67	22.39	21.85
		22.00	50	0	21.11	21.58	21.27
		22.00	50	25	21.24	21.49	21.26
		22.00	50	50	21.29	21.36	21.00
		22.00	100	0	21.15	21.46	21.06

Table 21: Conducted power measurement results of LTE Band VII

7.2 SAR measurement Results

General Notes:

- 1) The maximum reported SAR of each test band is shown in **bold** letters.
- 2) Per KDB447498 D01v05r02, all measurement SAR results are scaled to the maximum tune-up tolerance limit to demonstrate compliant.
- 3) Per KDB447498 D01v05r02, testing of other required channels within the operating mode of a frequency band is not required when the reported 1-g or 10-g SAR for the mid-band or highest output power channel is: ≤ 0.8 W/kg or 2.0 W/kg, for 1-g or 10-g respectively, when the transmission band is ≤ 100 MHz. When the maximum output power variation across the required test channels is $> \frac{1}{2}$ dB, instead of the middle channel, the highest output power channel must be used.
- 4) Per KDB 865664 D01v01, for each frequency band, repeated SAR measurement is required only when the measured SAR is ≥ 0.8 W/Kg; if the deviation among the repeated measurement is $\leq 20\%$, and the measured SAR < 1.45 W/Kg, only one repeated measurement is required.
- 5) Per KDB865664 D02v01r01, SAR plot is only required for the highest measured SAR in each exposure configuration, wireless mode and frequency band combination; Plots are also required when the measured SAR is > 1.5 W/kg, or > 7.0 W/kg for occupational exposure. The published RF exposure KDB procedures may require additional plots; for example, to support SAR to peak location separation ratio test exclusion and/or volume scan post-processing(Refer to appendix B for details).

GSM Notes:

- 1) Per KDB941225 D01v03, SAR test reduction for GPRS and EDGE modes is determined by the source-based time-averaged output power specified for production units, including tune-up tolerance. The data mode with highest specified time-averaged output power should be tested for SAR compliance in the applicable exposure conditions. For modes with the same specified maximum output power and tolerance, the higher number time-slot configuration should be tested.

UMTS Notes:

- 1) Per KDB941225 D01v03, When the maximum output power and tune-up tolerance specified for production units in a secondary mode is $\leq \frac{1}{4}$ dB higher than the primary mode or when the highest reported SAR of the primary mode is scaled by the ratio of specified maximum output power and tune-up tolerance of secondary to primary mode and the adjusted SAR is ≤ 1.2 W/kg, SAR measurement is not required for the secondary mode.

LTE notes:

- 1) The LTE test configurations are determined according to KDB941225 D05 SAR for LTE Devices v02r03. The general test procedures used for SAR testing can be found in Section 6.3.
- 2) A-MPR was disabled for all SAR test by setting NS_01 on the base station simulator. SAR tests were performed with the same number of RB and RB offsets transmitting on all TTI frames(maximum TTI)

7.2.1 SAR measurement Result of GSM850

Test Position of Body with 5mm	Test channel /Frequency	Test Mode	SAR Value (W/kg)		Power Drift (dB)	Conducte d Power (dBm)	Tune-up Power (dBm)	Scaled SAR1-g (W/kg)	Liquid Temp.
			1-g	10-g					
Front Side	251/848.8	GPRS 2TS	0.887	0.538	0.020	30.40	31.00	1.018	21.4°C
Front Side	190/836.6	GPRS 2TS	0.787	0.479	0.150	30.00	31.00	0.991	21.4°C
Front Side	128/824.2	GPRS 2TS	0.786	0.483	0.060	30.07	31.00	0.974	21.4°C
Back Side	251/848.8	GPRS 2TS	0.947	0.551	-0.050	30.40	31.00	1.087	21.4°C
Back Side-repeated*	251/848.8	GPRS 2TS	0.951	0.552	0.000	30.40	31.00	1.092	21.4°C
Back Side	190/836.6	GPRS 2TS	0.793	0.473	-0.560	30.00	31.00	0.998	21.4°C
Back Side	128/824.2	GPRS 2TS	0.763	0.457	-0.180	30.07	31.00	0.945	21.4°C
Left Side	190/836.6	GPRS 2TS	0.163	0.111	-0.060	30.00	31.00	0.205	21.4°C
Right Side	190/836.6	GPRS 2TS	0.559	0.332	-0.030	30.00	31.00	0.704	21.4°C
Tip Side	190/836.6	GPRS 2TS	0.010	0.007	0.030	30.00	31.00	0.012	21.4°C

Table 22: Body SAR test results of GSM850

Note: * - repeated at the highest SAR measurement according to the FCC KDB 865664.

7.2.2 SAR measurement Result of GSM1900

Test Position of Body with 5mm	Test channel /Frequency	Test Mode	SAR Value (W/kg)		Power Drift (dB)	Conducted Power (dBm)	Tune-up Power (dBm)	Scaled SAR1-g (W/kg)	Liquid Temp.
			1-g	10-g					
Front Side	661/1880	GPRS 2TS	0.631	0.367	-0.050	27.22	28.00	0.755	21.4°C
Back Side	810/1909.8	GPRS 2TS	0.897	0.484	0.060	27.24	28.00	1.069	21.4°C
Back Side	661/1880	GPRS 2TS	0.940	0.526	-0.110	27.22	28.00	1.125	21.4°C
Back Side-repeated*	661/1880	GPRS 2TS	0.965	0.534	0.150	27.22	28.00	1.155	21.4°C
Back Side	512/1850.2	GPRS 2TS	0.837	0.490	0.190	27.10	28.00	1.030	21.4°C
Left Side	661/1880	GPRS 2TS	0.216	0.119	0.060	27.22	28.00	0.258	21.4°C
Right Side	661/1880	GPRS 2TS	0.705	0.388	-0.070	27.22	28.00	0.844	21.4°C
Right Side	512/1850.2	GPRS 2TS	0.743	0.408	-0.090	27.10	28.00	0.914	21.4°C
Right Side	810/1909.8	GPRS 2TS	0.690	0.373	-0.040	27.24	28.00	0.822	21.4°C
Tip Side	661/1880	GPRS 2TS	0.034	0.022	-0.040	27.22	28.00	0.041	21.4°C

Table 23: Body SAR test results of GSM1900

Note: * - repeated at the highest SAR measurement according to the FCC KDB 865664.

7.2.3 SAR measurement Result of UMTS Band V

Test Position of Body with 5mm	Test channel /Frequency	Test Mode	SAR Value (W/kg)		Power Drift (dB)	Conducted Power (dBm)	Tune-up Power (dBm)	Scaled SAR _{1-g} (W/kg)	Liquid Temp.
			1-g	10-g					
Front Side	4182/836.4	RMC	0.863	0.533	-0.060	22.67	23.00	0.931	21.4°C
Front Side	4132/826.4	RMC	0.832	0.516	-0.090	22.60	23.00	0.912	21.4°C
Front Side	4233/846.6	RMC	0.877	0.539	0.050	22.55	23.00	0.973	21.4°C
Back Side	4182/836.4	RMC	0.912	0.536	-0.180	22.67	23.00	0.984	21.4°C
Back Side	4132/826.4	RMC	0.905	0.535	-0.090	22.60	23.00	0.992	21.4°C
Back Side	4233/846.6	RMC	0.936	0.547	-0.070	22.55	23.00	1.038	21.4°C
Back Side -repeated*	4233/846.6	RMC	0.925	0.542	-0.070	22.55	23.00	1.026	21.4°C
Left Side	4182/836.4	RMC	0.196	0.134	-0.040	22.67	23.00	0.675	21.4°C
Right Side	4182/836.4	RMC	0.626	0.377	0.100	22.67	23.00	0.211	21.4°C
Tip Side	4182/836.4	RMC	0.012	0.009	-0.130	22.67	23.00	0.013	21.4°C

Table 24: Body SAR test results of UMTS Band V

Note: * - repeated at the highest SAR measurement according to the FCC KDB 865664.

7.2.4 SAR measurement Result of UMTS Band IV

Test Position of Body with 10mm	Test channel /Frequency	Test Mode	SAR Value (W/kg)		Power Drift (dB)	Conducted Power (dBm)	Tune-up Power (dBm)	Scaled SAR _{1-g} (W/kg)	Liquid Temp.
			1-g	10-g					
Front Side	1413/1732.6	RMC	0.822	0.464	-0.140	22.46	23.00	0.931	21.4°C
Front Side	1312/1712.4	RMC	0.796	0.449	0.130	22.45	23.00	0.903	21.4°C
Front Side	1513/1752.6	RMC	0.868	0.492	0.030	22.59	23.00	0.954	21.4°C
Back Side	1413/1732.6	RMC	1.030	0.565	-0.110	22.46	23.00	1.166	21.4°C
Back Side	1312/1712.4	RMC	1.010	0.548	-0.160	22.45	23.00	1.146	21.4°C
Back Side	1513/1752.6	RMC	1.090	0.602	-0.160	22.59	23.00	1.198	21.4°C
Back Side -repeated*	1513/1752.6	RMC	1.090	0.599	-0.110	22.59	23.00	1.198	21.4°C
Left Side	1413/1732.6	RMC	0.246	0.140	-0.100	22.46	23.00	0.279	21.4°C
Right Side	1413/1732.6	RMC	0.778	0.429	0.110	22.46	23.00	0.881	21.4°C
Right Side	1312/1712.4	RMC	0.729	0.402	0.140	22.45	23.00	0.827	21.4°C
Right Side	1513/1752.6	RMC	0.848	0.468	0.110	22.59	23.00	0.932	21.4°C
Tip Side	1413/1732.6	RMC	0.031	0.021	-0.170	22.46	23.00	0.035	21.4°C

Table 25: Body SAR test results of UMTS Band IV

Note: * - repeated at the highest SAR measurement according to the FCC KDB 865664.

7.2.5 SAR measurement Result of UMTS Band II

Test Position of Body with 10mm	Test channel /Frequency	Test Mode	SAR Value (W/kg)		Power Drift (dB)	Conducted Power (dBm)	Tune-up Power (dBm)	Scaled SAR _{1-g} (W/kg)	Liquid Temp.
			1-g	10-g					
Front Side	9400/1880	RMC	0.797	0.447	-0.030	22.59	23.00	0.876	21.4°C
Front Side	9538/1907.6	RMC	0.941	0.492	0.140	22.48	23.00	1.061	21.4°C
Front Side	9262/1852.4	RMC	0.956	0.553	-0.020	22.51	23.00	1.070	21.4°C
Back Side	9400/1880	RMC	0.950	0.485	-0.180	22.59	23.00	1.044	21.4°C
Back Side	9538/1907.6	RMC	0.625	0.318	-0.150	22.48	23.00	0.704	21.4°C
Back Side	9262/1852.4	RMC	1.040	0.558	0.070	22.51	23.00	1.164	21.4°C
Back Side -repeated*	9262/1852.4	RMC	1.020	0.551	-0.140	22.51	23.00	1.142	21.4°C
Left Side	9400/1880	RMC	0.661	0.360	-0.120	22.59	23.00	0.285	21.4°C
Right Side	9400/1880	RMC	0.259	0.147	0.140	22.59	23.00	0.726	21.4°C
Tip Side	9400/1880	RMC	0.099	0.060	-0.150	22.59	23.00	0.109	21.4°C

Table 26: Body SAR test results of UMTS Band II

Note: * - repeated at the highest SAR measurement according to the FCC KDB 865664.

7.2.6 SAR measurement Result of LTE Band V

Test Position of Body with 10mm	Test channel /Frequency	Test Mode	SAR Value (W/kg)		Power Drift (dB)	Conducte d Power (dBm)	Tune-up Power (dBm)	Scaled SAR _{1-g} (W/kg)	Liquid Temp.
			1-g	10-g					
1RB									
Front Side	20600/844	10M QPSK 1RB#0	1.090	0.654	-0.120	23.43	23.50	1.108	21.4°C
Front Side -repeated*	20600/844	10M QPSK 1RB#0	1.040	0.629	-0.050	23.43	23.50	1.057	21.4°C
Front Side	20450/829	10M QPSK 1RB#49	0.990	0.605	-0.120	23.04	23.50	1.101	21.4°C
Front Side	20525/836.5	10M QPSK 1RB#49	0.881	0.536	-0.150	23.23	23.50	0.938	21.4°C
Back Side	20600/844	10M QPSK 1RB#0	0.927	0.542	0.130	23.43	23.50	0.942	21.4°C
Back Side	20450/829	10M QPSK 1RB#49	0.843	0.494	0.060	23.04	23.50	0.937	21.4°C
Back Side	20525/836.5	10M QPSK 1RB#49	0.908	0.530	0.080	23.23	23.50	0.966	21.4°C
Left Side	20600/844	10M QPSK 1RB#0	0.249	0.168	0.060	23.43	23.50	0.253	21.4°C
Right Side	20600/844	10M QPSK 1RB#0	0.652	0.388	0.110	23.43	23.50	0.663	21.4°C
Tip Side	20600/844	10M QPSK 1RB#0	0.035	0.022	-0.050	23.43	23.50	0.035	21.4°C
50%RB									
Front Side	20450/829	10M QPSK 25RB#13	0.849	0.516	0.150	21.79	22.50	1.000	21.4°C
Front Side	20525/836.5	10M QPSK 25RB#13	0.787	0.477	0.140	21.77	22.50	0.931	21.4°C
Front Side	20600/844	10M QPSK 25RB#13	0.741	0.456	-0.060	21.69	22.50	0.893	21.4°C
Back Side	20450/829	10M QPSK 25RB#13	0.755	0.442	0.160	21.79	22.50	0.889	21.4°C
Back Side	20525/836.5	10M QPSK 25RB#13	0.778	0.450	0.120	21.77	22.50	0.920	21.4°C
Back Side	20600/844	10M QPSK 25RB#13	0.719	0.420	-0.030	21.69	22.50	0.866	21.4°C
Left Side	20450/829	10M QPSK 25RB#13	0.169	0.114	0.180	21.79	22.50	0.199	21.4°C
Right Side	20450/829	10M QPSK 25RB#13	0.510	0.301	0.180	21.79	22.50	0.601	21.4°C
Tip Side	20450/829	10M QPSK 25RB#13	0.017	0.012	0.000	21.79	22.50	0.020	21.4°C
100%RB									
Front Side	20525/836.5	10M QPSK 100%RB#0	0.777	0.467	-0.060	21.67	22.50	0.941	21.4°C
Back Side	20525/836.5	10M QPSK 100%RB#0	0.864	0.501	-0.080	21.67	22.50	1.046	21.4°C

Table 27: Body SAR test results of LTE Band V

Note: * - repeated at the highest SAR measurement according to the FCC KDB 865664.

7.2.7 SAR measurement Result of LTE Band IV

Test Position of Body with 10mm	Test channel /Frequency	Test Mode	SAR Value (W/kg)		Power Drift (dB)	Conducte d Power (dBm)	Tune-up Power (dBm)	Scaled SAR _{1-g} (W/kg)	Liquid Temp.
			1-g	10-g					
1RB									
Front Side	20050/1720	20M QPSK 1RB#99	0.519	0.294	0.010	22.70	23.00	0.556	21.4°C
Back Side	20050/1720	20M QPSK 1RB#99	0.710	0.391	0.050	22.70	23.00	0.761	21.4°C
Back Side	20175/1732.5	20M QPSK 1RB#99	0.955	0.526	-0.160	22.58	23.00	1.052	21.4°C
Back Side -repeated*	20175/1732.5	20M QPSK 1RB#99	0.881	0.480	-0.170	22.58	23.00	0.970	21.4°C
Back Side	20300/1745	20M QPSK 1RB#0	0.767	0.424	-0.070	22.62	23.00	0.837	21.4°C
Left Side	20050/1720	20M QPSK 1RB#99	0.176	0.101	0.010	22.70	23.00	0.189	21.4°C
Right Side	20050/1720	20M QPSK 1RB#99	0.525	0.291	0.020	22.70	23.00	0.563	21.4°C
Tip Side	20050/1720	20M QPSK 1RB#99	0.031	0.020	0.030	22.70	23.00	0.033	21.4°C
50%RB									
Front Side	20175/1732.5	20M QPSK 50RB#50	0.575	0.326	0.080	21.26	22.00	0.682	21.4°C
Back Side	20175/1732.5	20M QPSK 50RB#50	0.678	0.373	-0.020	21.26	22.00	0.804	21.4°C
Back Side	20050/1720	20M QPSK 50RB#50	0.667	0.365	-0.040	20.85	22.00	0.869	21.4°C
Back Side	20300/1745	20M QPSK 50RB#0	0.781	0.431	-0.110	21.23	22.00	0.933	21.4°C
Left Side	20175/1732.5	20M QPSK 50RB#50	0.164	0.094	0.070	21.26	22.00	0.194	21.4°C
Right Side	20175/1732.5	20M QPSK 50RB#50	0.573	0.317	0.040	21.26	22.00	0.679	21.4°C
Tip Side	20175/1732.5	20M QPSK 50RB#50	0.031	0.021	0.190	21.26	22.00	0.037	21.4°C
100%RB									
Back Side	20175/1732.5	20M QPSK 100%RB#0	0.640	0.349	-0.180	21.22	22.00	0.766	21.4°C

Table 28: Body SAR test results of LTE Band IV

Note: * - repeated at the highest SAR measurement according to the FCC KDB 865664.

7.2.8 SAR measurement Result of LTE Band II

Test Position of Body with 10mm	Test channel /Frequency	Test Mode	SAR Value (W/kg)		Power Drift (dB)	Conducte d Power (dBm)	Tune-up Power (dBm)	Scaled SAR _{1-g} (W/kg)	Liquid Temp.
			1-g	10-g					
1RB									
Front Side	18700/1860	20M QPSK 1RB#99	0.500	0.293	0.120	22.62	23.00	0.546	21.4°C
Back Side	18700/1860	20M QPSK 1RB#99	1.050	0.564	-0.170	22.62	23.00	1.146	21.4°C
Back Side -repeated*	18700/1860	20M QPSK 1RB#99	1.030	0.543	-0.120	22.62	23.00	1.124	21.4°C
Back Side	18900/1880	20M QPSK 1RB#0	0.994	0.525	-0.080	22.47	23.00	1.123	21.4°C
Back Side	19100/1900	20M QPSK 1RB#50	0.717	0.365	-0.080	22.47	23.00	0.810	21.4°C
Left Side	18700/1860	20M QPSK 1RB#99	0.263	0.146	0.070	22.62	23.00	0.287	21.4°C
Right Side	18700/1860	20M QPSK 1RB#99	0.872	0.477	0.160	22.62	23.00	0.952	21.4°C
Right Side	18900/1880	20M QPSK 1RB#0	0.575	0.309	0.120	22.47	23.00	0.650	21.4°C
Right Side	19100/1900	20M QPSK 1RB#50	0.366	0.199	0.120	22.47	23.00	0.414	21.4°C
Tip Side	18700/1860	20M QPSK 1RB#99	0.067	0.042	0.150	22.62	23.00	0.074	21.4°C
50%RB									
Front Side	18700/1860	20M QPSK 50RB#50	0.383	0.226	0.130	21.37	22.00	0.443	21.4°C
Back Side	18700/1860	20M QPSK 50RB#50	0.948	0.512	0.130	21.37	22.00	1.096	21.4°C
Back Side	18900/1880	20M QPSK 50RB#0	0.708	0.359	-0.120	21.35	22.00	0.822	21.4°C
Back Side	19100/1900	20M QPSK 50RB#25	0.515	0.261	-0.160	21.09	22.00	0.635	21.4°C
Left Side	18700/1860	20M QPSK 50RB#50	0.270	0.151	0.080	21.37	22.00	0.312	21.4°C
Right Side	18900/1880	20M QPSK 50RB#0	0.596	0.324	0.150	21.35	22.00	0.692	21.4°C
Right Side	19100/1900	20M QPSK 50RB#25	0.294	0.162	0.120	21.09	22.00	0.363	21.4°C
Right Side	18700/1860	20M QPSK 50RB#50	0.793	0.434	-0.170	21.37	22.00	0.917	21.4°C
Tip Side	18700/1860	20M QPSK 50RB#50	0.063	0.039	-0.050	21.37	22.00	0.073	21.4°C
100%RB									
Back Side	18900/1880	20M QPSK 100%RB#0	0.786	0.409	-0.170	21.04	22.00	0.980	21.4°C
Right Side	18900/1880	20M QPSK 100%RB#0	0.581	0.313	-0.030	21.04	22.00	0.725	21.4°C

Table 29: Body SAR test results of LTE Band II

Note: * - repeated at the highest SAR measurement according to the FCC KDB 865664.

7.2.9 SAR measurement Result of LTE Band VII

Test Position of Body with 10mm	Test channel /Frequency	Test Mode	SAR Value (W/kg)		Power Drift (dB)	Conducte d Power (dBm)	Tune-up Power (dBm)	Scaled SAR _{1-g} (W/kg)	Liquid Temp.
			1-g	10-g					
1RB									
Front Side	21100/2535	20M QPSK 1RB#50	0.945	0.445	0.030	22.39	23.00	1.088	21.4°C
Front Side -repeated*	21100/2535	20M QPSK 1RB#50	0.952	0.448	-0.100	22.39	23.00	1.096	21.4°C
Front Side	21350/2560	20M QPSK 1RB#50	0.866	0.408	-0.180	22.07	23.00	1.073	21.4°C
Front Side	20850/2510	20M QPSK 1RB#50	0.646	0.307	-0.190	22.19	23.00	0.778	21.4°C
Back Side	21100/2535	20M QPSK 1RB#50	0.866	0.401	-0.070	22.39	23.00	0.997	21.4°C
Back Side	21350/2560	20M QPSK 1RB#50	0.860	0.398	0.130	22.07	23.00	1.065	21.4°C
Back Side	20850/2510	20M QPSK 1RB#50	0.744	0.345	0.030	22.19	23.00	0.897	21.4°C
Left Side	21100/2535	20M QPSK 1RB#50	0.091	0.048	-0.110	22.39	23.00	0.105	21.4°C
Right Side	21100/2535	20M QPSK 1RB#50	0.328	0.169	0.150	22.39	23.00	0.377	21.4°C
Tip Side	21100/2535	20M QPSK 1RB#50	0.019	0.011	0.070	22.39	23.00	0.022	21.4°C
50%RB									
Front Side	21100/2535	20M QPSK 50%RB#0	0.773	0.365	0.170	21.46	22.00	0.875	21.4°C
Front Side	21350/2560	20M QPSK 50%RB#0	0.683	0.323	0.000	21.01	22.00	0.858	21.4°C
Front Side	20850/2510	20M QPSK 50%RB#50	0.672	0.313	0.140	21.05	22.00	0.836	21.4°C
Back Side	21100/2535	20M QPSK 50%RB#0	0.732	0.341	-0.160	21.46	22.00	0.829	21.4°C
Back Side	21350/2560	20M QPSK 50%RB#0	0.733	0.342	0.120	21.01	22.00	0.921	21.4°C
Back Side	20850/2510	20M QPSK 50%RB#50	0.616	0.288	-0.170	21.05	22.00	0.767	21.4°C
Left Side	21100/2535	20M QPSK 50%RB#0	0.109	0.056	0.040	21.46	22.00	0.123	21.4°C
Right Side	21100/2535	20M QPSK 50%RB#0	0.365	0.190	-0.120	21.46	22.00	0.413	21.4°C
Tip Side	21100/2535	20M QPSK 50%RB#0	0.017	0.010	-0.080	21.46	22.00	0.019	21.4°C
100%RB									
Front Side	21100/2535	20M QPSK 100%RB#0	0.819	0.386	0.020	21.35	22.00	0.951	21.4°C
Back Side	21100/2535	20M QPSK 100%RB#0	0.820	0.378	0.040	21.35	22.00	0.952	21.4°C

Table 30: Body SAR test results of LTE Band VII

Note: * - repeated at the highest SAR measurement according to the FCC KDB 865664.



Appendix A. System Check Plots
(Pls See Appendix A.)

Appendix B. SAR Measurement Plots
(Pls See Appendix B.)

Appendix C. Calibration Certificate
(Pls See Appendix C.)

Appendix D. Photo documentation
(Pls See Appendix D.)

End