



Appendix A. System Check Plots

Table of contents
SystemPerformanceCheck-D750-EX-Body
SystemPerformanceCheck-D835-EX-Body
SystemPerformanceCheck-D835-EX-Body
SystemPerformanceCheck-D1800-EX-Body
SystemPerformanceCheck-D1900-EX-Body
SystemPerformanceCheck-D1900-EX-Body

Test Laboratory: HUAWEI SAR/HAC Lab

SystemPerformanceCheck-D750-EX-Body

DUT: Dipole 750 MHz D750V3; Type: D750V3; Serial: D750V3 - SN:1044

Communication System: CW; Frequency: 750 MHz; Duty Cycle: 1:1

Medium parameters used: $f = 750$ MHz; $\sigma = 0.983$ S/m; $\epsilon_r = 54.653$; $\rho = 1000$ kg/m³

Phantom section: Flat Section

DASY Configuration:

- Probe: EX3DV4 - SN3898; ConvF(9.87, 9.87, 9.87); Calibrated: 2013-1-14;
- Sensor-Surface: 4mm (Mechanical Surface Detection), $z = 1.0, 31.0$
- Electronics: DAE4 Sn1236; Calibrated: 2012-11-23
- Phantom: SAM4; Type: SAM; Serial: TP-1620
- DASY52 52.8.4(1052); SEMCAD X 14.6.8(7028)

Configuration/d=10mm, Pin=250mW/Area Scan (5x13x1): Measurement grid: $dx=15$ mm, $dy=15$ mm

Maximum value of SAR (measured) = 2.21 W/kg

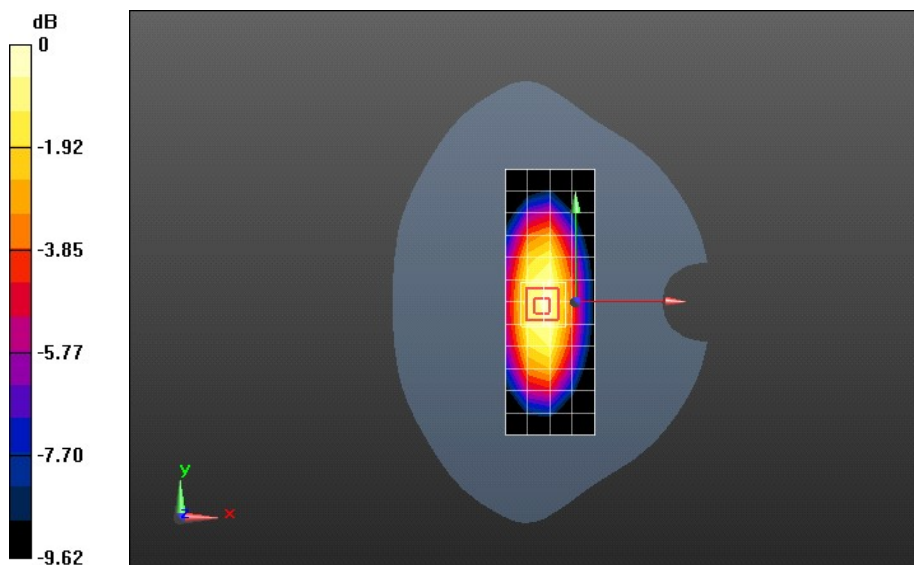
Configuration/d=10mm, Pin=250mW/Zoom Scan (7x7x7) (7x7x7)/Cube 0: Measurement grid: $dx=5$ mm, $dy=5$ mm, $dz=5$ mm

Reference Value = 47.605 V/m; Power Drift = 0.04 dB

Peak SAR (extrapolated) = 3.23 W/kg

SAR(1 g) = 2.19 W/kg; SAR(10 g) = 1.46 W/kg

Maximum value of SAR (measured) = 2.35 W/kg



0 dB = 2.35 W/kg = 3.72 dBW/kg

Test Laboratory: HUAWEI SAR/HAC Lab

SystemPerformanceCheck-D835-EX-Body

DUT: Dipole 835 MHz D835V2; Type: D835V2; Serial: D835V2 - SN:4d059

Communication System: CW; Frequency: 835 MHz; Duty Cycle: 1:1

Medium parameters used: $f = 835$ MHz; $\sigma = 0.989$ S/m; $\epsilon_r = 56.181$; $\rho = 1000$ kg/m³

Phantom section: Flat Section

DASY Configuration:

- Probe: EX3DV4 - SN3736; ConvF(9.28, 9.28, 9.28); Calibrated: 2013-5-10;
- Sensor-Surface: 4mm (Mechanical Surface Detection), $z = 1.0, 31.0$
- Electronics: DAE4 Sn1236; Calibrated: 2012-11-23
- Phantom: SAM4; Type: SAM; Serial: TP-1620
- DASY52 52.8.4(1052); SEMCAD X 14.6.8(7028)

Configuration/d=10mm, Pin=250mW/Area Scan (5x13x1): Measurement grid: $dx=15$ mm, $dy=15$ mm

Maximum value of SAR (measured) = 2.55 W/kg

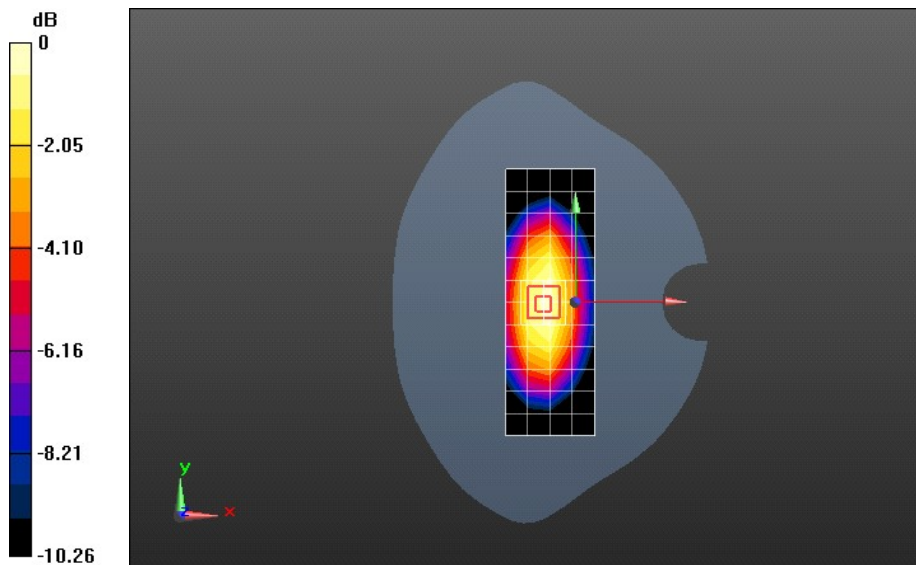
Configuration/d=10mm, Pin=250mW/Zoom Scan (7x7x7) (7x7x7)/Cube 0: Measurement grid: $dx=5$ mm, $dy=5$ mm, $dz=5$ mm

Reference Value = 50.827 V/m; Power Drift = 0.02 dB

Peak SAR (extrapolated) = 3.70 W/kg

SAR(1 g) = 2.46 W/kg; SAR(10 g) = 1.61 W/kg

Maximum value of SAR (measured) = 2.65 W/kg



0 dB = 2.65 W/kg = 4.23 dBW/kg

Test Laboratory: HUAWEI SAR/HAC Lab

SystemPerformanceCheck-D835-EX-Body

DUT: Dipole 835 MHz D835V2; Type: D835V2; Serial: D835V2 - SN:4d059

Communication System: CW; Frequency: 835 MHz; Duty Cycle: 1:1

Medium parameters used: $f = 835$ MHz; $\sigma = 0.982$ S/m; $\epsilon_r = 54.995$; $\rho = 1000$ kg/m³

Phantom section: Flat Section

DASY Configuration:

- Probe: EX3DV4 - SN3736; ConvF(9.28, 9.28, 9.28); Calibrated: 2013-5-10;
- Sensor-Surface: 4mm (Mechanical Surface Detection), $z = 1.0, 31.0$
- Electronics: DAE4 Sn1236; Calibrated: 2012-11-23
- Phantom: SAM4; Type: SAM; Serial: TP-1620
- DASY52 52.8.4(1052); SEMCAD X 14.6.8(7028)

Configuration/d=10mm, Pin=250mW/Area Scan (7x13x1): Measurement grid: $dx=10$ mm, $dy=10$ mm

Maximum value of SAR (measured) = 2.54 W/kg

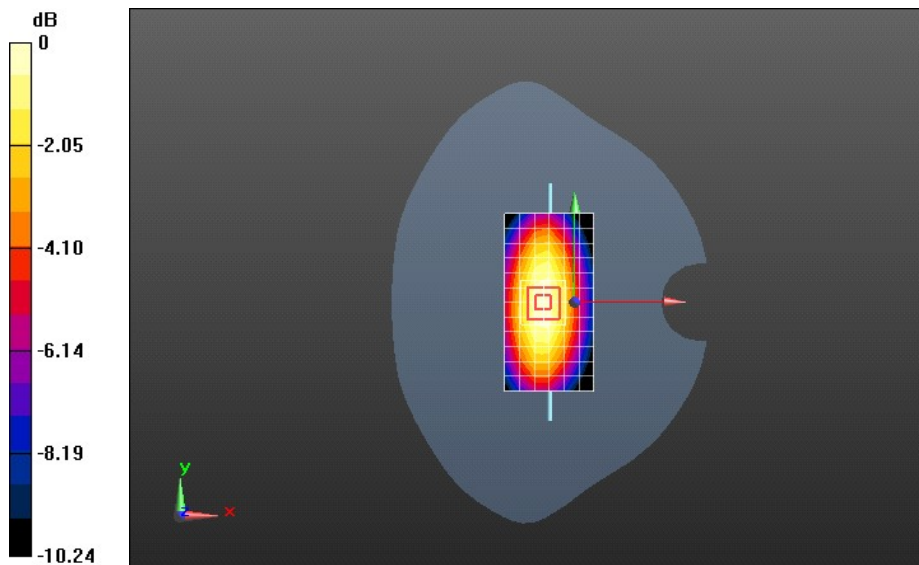
Configuration/d=10mm, Pin=250mW/Zoom Scan (7x7x7) (7x7x7)/Cube 0: Measurement grid: $dx=5$ mm, $dy=5$ mm, $dz=5$ mm

Reference Value = 50.799 V/m; Power Drift = 0.09 dB

Peak SAR (extrapolated) = 3.73 W/kg

SAR(1 g) = 2.47 W/kg; SAR(10 g) = 1.62 W/kg

Maximum value of SAR (measured) = 2.66 W/kg



0 dB = 2.66 W/kg = 4.25 dBW/kg

Test Laboratory: HUAWEI SAR/HAC Lab

SystemPerformanceCheck-D1800-EX-Body

DUT: Dipole 1800 MHz D1800V2; Type: D1800V2; Serial: D1800V2 - SN:2d184

Communication System: CW; Frequency: 1800 MHz; Duty Cycle: 1:1

Medium parameters used: $f = 1800$ MHz; $\sigma = 1.53$ S/m; $\epsilon_r = 51.31$; $\rho = 1000$ kg/m³

Phantom section: Flat Section

DASY Configuration:

- Probe: EX3DV4 - SN3898; ConvF(8.04, 8.04, 8.04); Calibrated: 2013-1-14;
- Sensor-Surface: 4mm (Mechanical Surface Detection), $z = 1.0, 31.0$
- Electronics: DAE4 Sn1236; Calibrated: 2012-11-23
- Phantom: SAM3; Type: SAM; Serial: TP-1597
- DASY52 52.8.4(1052); SEMCAD X 14.6.8(7028)

Configuration/d=10mm,pin=250mW/Area Scan (7x13x1): Measurement grid: $dx=10$ mm, $dy=10$ mm

Maximum value of SAR (measured) = 10.6 W/kg

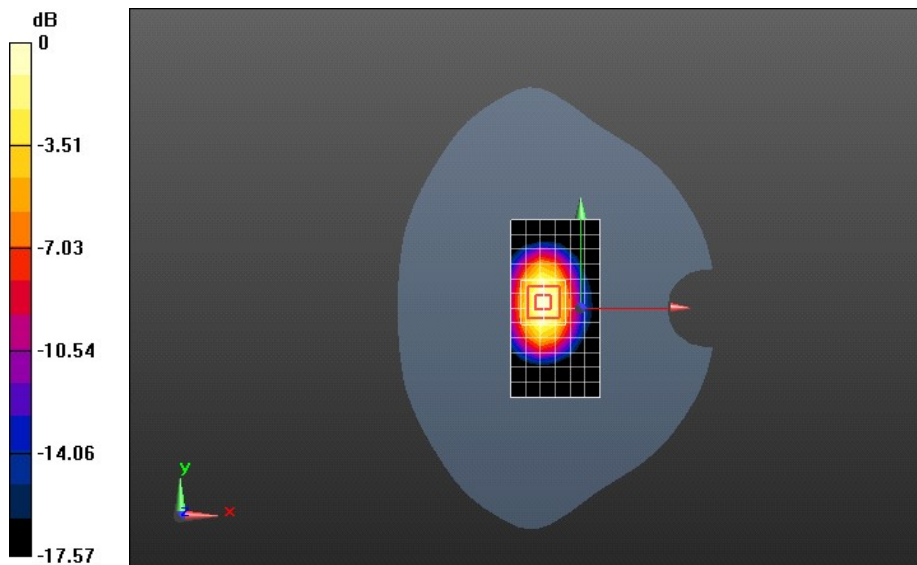
Configuration/d=10mm,pin=250mW/Zoom Scan (7x7x7)/Cube 0: Measurement grid: $dx=5$ mm, $dy=5$ mm, $dz=5$ mm

Reference Value = 69.880 V/m; Power Drift = 0.07 dB

Peak SAR (extrapolated) = 18.8 W/kg

SAR(1 g) = 9.89 W/kg; SAR(10 g) = 5.08 W/kg

Maximum value of SAR (measured) = 11.1 W/kg



Test Laboratory: HUAWEI SAR/HAC Lab

SystemPerformanceCheck-D1900-EX-Body

DUT: Dipole 1900 MHz D1900V2; Type: D1900V2; Serial: D1900V2 - SN:5d143

Communication System: CW; Frequency: 1900 MHz; Duty Cycle: 1:1

Medium parameters used: $f = 1900$ MHz; $\sigma = 1.565$ S/m; $\epsilon_r = 52.936$; $\rho = 1000$ kg/m³

Phantom section: Flat Section

DASY Configuration:

- Probe: EX3DV4 - SN3736; ConvF(7.14, 7.14, 7.14); Calibrated: 2012-4-26;
- Sensor-Surface: 4mm (Mechanical Surface Detection), $z = 1.0, 31.0$
- Electronics: DAE4 Sn1236; Calibrated: 2012-11-23
- Phantom: SAM3; Type: SAM; Serial: TP-1597
- DASY52 52.8.4(1052); SEMCAD X 14.6.8(7028)

Configuration/d=10mm, Pin=250mW/Area Scan (7x13x1): Measurement grid: $dx=10$ mm, $dy=10$ mm

Maximum value of SAR (measured) = 9.95 W/kg

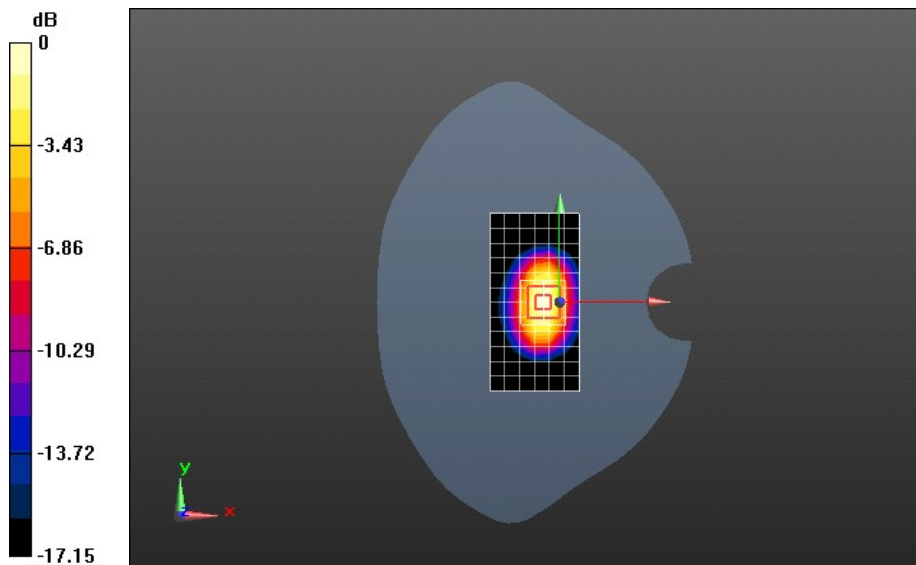
Configuration/d=10mm, Pin=250mW/Zoom Scan (7x7x7) (7x7x7)/Cube 0: Measurement grid: $dx=5$ mm, $dy=5$ mm, $dz=5$ mm

Reference Value = 76.457 V/m; Power Drift = -0.14 dB

Peak SAR (extrapolated) = 17.6 W/kg

SAR(1 g) = 9.83 W/kg; SAR(10 g) = 5.11 W/kg

Maximum value of SAR (measured) = 11.2 W/kg



0 dB = 11.2 W/kg = 10.49 dBW/kg

Test Laboratory: HUAWEI SAR/HAC Lab

SystemPerformanceCheck-D1900-EX-Body

DUT: Dipole 1900 MHz D1900V2; Type: D1900V2; Serial: D1900V2 - SN:5d143

Communication System: CW; Frequency: 1900 MHz; Duty Cycle: 1:1
 Medium parameters used: $f = 1900$ MHz; $\sigma = 1.574$ S/m; $\epsilon_r = 52.376$; $\rho = 1000$ kg/m³
 Phantom section: Flat Section

DASY Configuration:

- Probe: EX3DV4 - SN3736; ConvF(7.14, 7.14, 7.14); Calibrated: 2012-4-26;
- Sensor-Surface: 4mm (Mechanical Surface Detection), $z = 1.0, 31.0$
- Electronics: DAE4 Sn1236; Calibrated: 2012-11-23
- Phantom: SAM3; Type: SAM; Serial: TP-1597
- DASY52 52.8.4(1052); SEMCAD X 14.6.8(7028)

Configuration/d=10mm, Pin=250mW/Area Scan (7x13x1): Measurement grid: $dx=10$ mm, $dy=10$ mm
 Maximum value of SAR (measured) = 10.4 W/kg

Configuration/d=10mm, Pin=250mW/Zoom Scan (7x7x7) (7x7x7)/Cube 0: Measurement grid: $dx=5$ mm, $dy=5$ mm, $dz=5$ mm
 Reference Value = 78.091 V/m; Power Drift = -0.17 dB
 Peak SAR (extrapolated) = 18.6 W/kg
SAR(1 g) = 10.3 W/kg; SAR(10 g) = 5.37 W/kg
 Maximum value of SAR (measured) = 11.8 W/kg

