



## Appendix for Test report



## Appendix A: DTS Bandwidth

### Test Result

TestMode	Antenna	Channel	DTS BW [MHz]	FL[MHz]	FH[MHz]	Limit[MHz]	Verdict
11B	Ant1	2412	8.720	2407.400	2416.120	---	PASS
		2437	10.160	2431.920	2442.080	---	PASS
		2462	10.120	2456.920	2467.040	---	PASS
11G	Ant1	2412	16.440	2403.800	2420.240	---	PASS
		2417	15.760	2409.160	2424.920	---	PASS
		2422	15.760	2414.080	2429.840	---	PASS
		2437	15.480	2429.080	2444.560	---	PASS
		2452	15.520	2444.080	2459.600	---	PASS
		2457	15.800	2448.800	2464.600	---	PASS
		2462	16.400	2453.800	2470.200	---	PASS
11N20SISO	Ant1	2412	15.760	2404.080	2419.840	---	PASS
		2417	16.360	2408.840	2425.200	---	PASS
		2422	16.360	2413.840	2430.200	---	PASS
		2437	16.280	2428.760	2445.040	---	PASS
		2452	16.080	2443.560	2459.640	---	PASS
		2457	16.000	2448.600	2464.600	---	PASS
		2462	15.840	2453.800	2469.640	---	PASS
11N40SISO	Ant1	2422	35.200	2404.400	2439.600	---	PASS
		2427	35.280	2409.400	2444.680	---	PASS
		2432	35.280	2414.400	2449.680	---	PASS
		2437	35.200	2419.400	2454.600	---	PASS
		2442	35.200	2424.400	2459.600	---	PASS
		2447	34.960	2429.640	2464.600	---	PASS
		2452	34.000	2434.400	2468.400	---	PASS



### Test Graphs

11B\_Ant1\_2412



11B\_Ant1\_2437



11B\_Ant1\_2462



11G\_Ant1\_2412



11G\_Ant1\_2417



11G\_Ant1\_2422



11G\_Ant1\_2437



11G\_Ant1\_2452



11G\_Ant1\_2457



11G\_Ant1\_2462



11N20SISO\_Ant1\_2412





11N20SISO\_Ant1\_2417



11N20SISO\_Ant1\_2422





11N20SISO\_Ant1\_2437



11N20SISO\_Ant1\_2452



11N20SISO\_Ant1\_2457



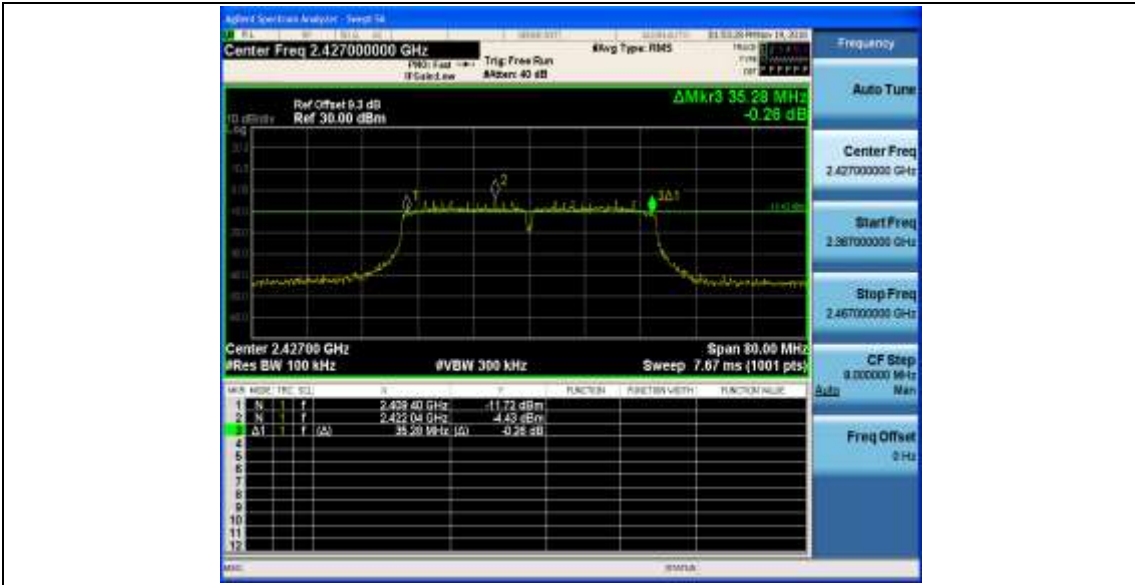
11N20SISO\_Ant1\_2462



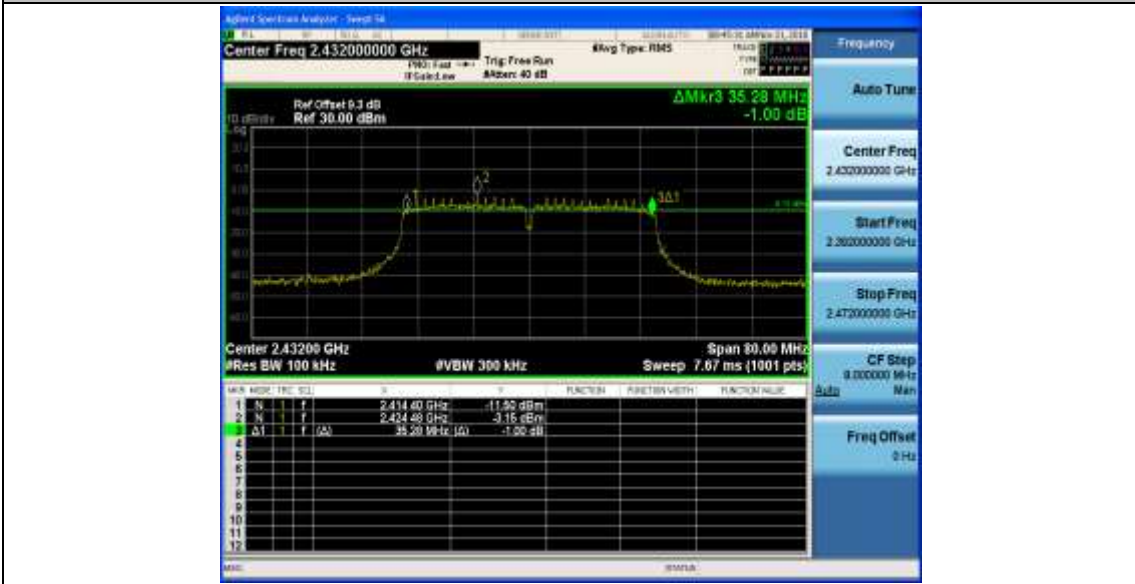
11N40SISO\_Ant1\_2422



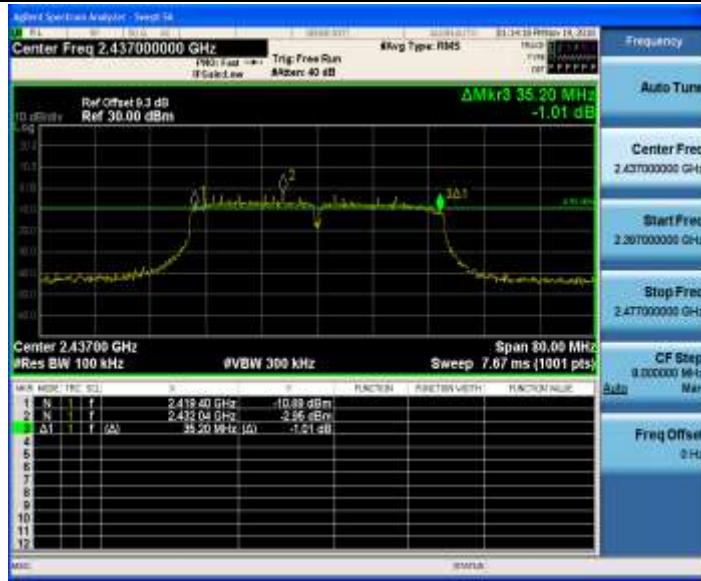
11N40SISO\_Ant1\_2427



11N40SISO\_Ant1\_2432



11N40SISO\_Ant1\_2437

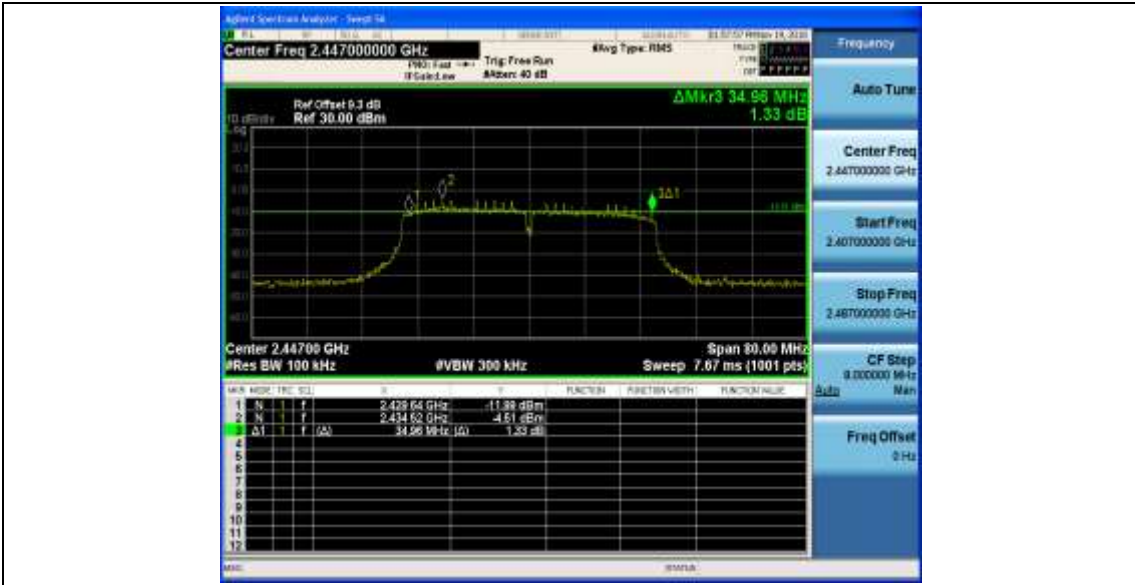


11N40SISO\_Ant1\_2442

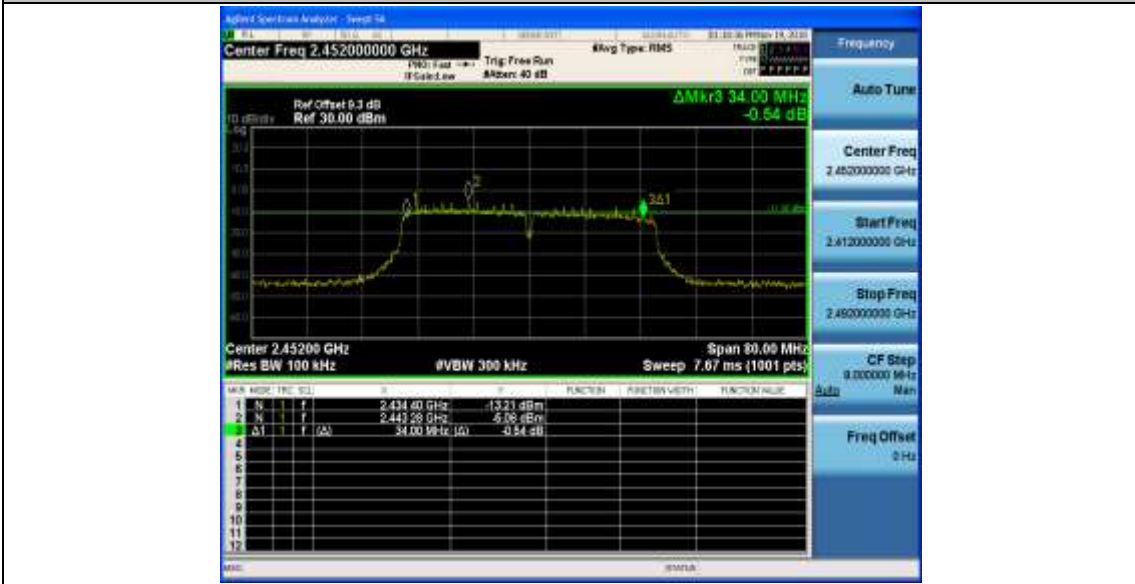


11N40SISO\_Ant1\_2447





11N40SISO\_Ant1\_2452



## Appendix B: Occupied Channel Bandwidth

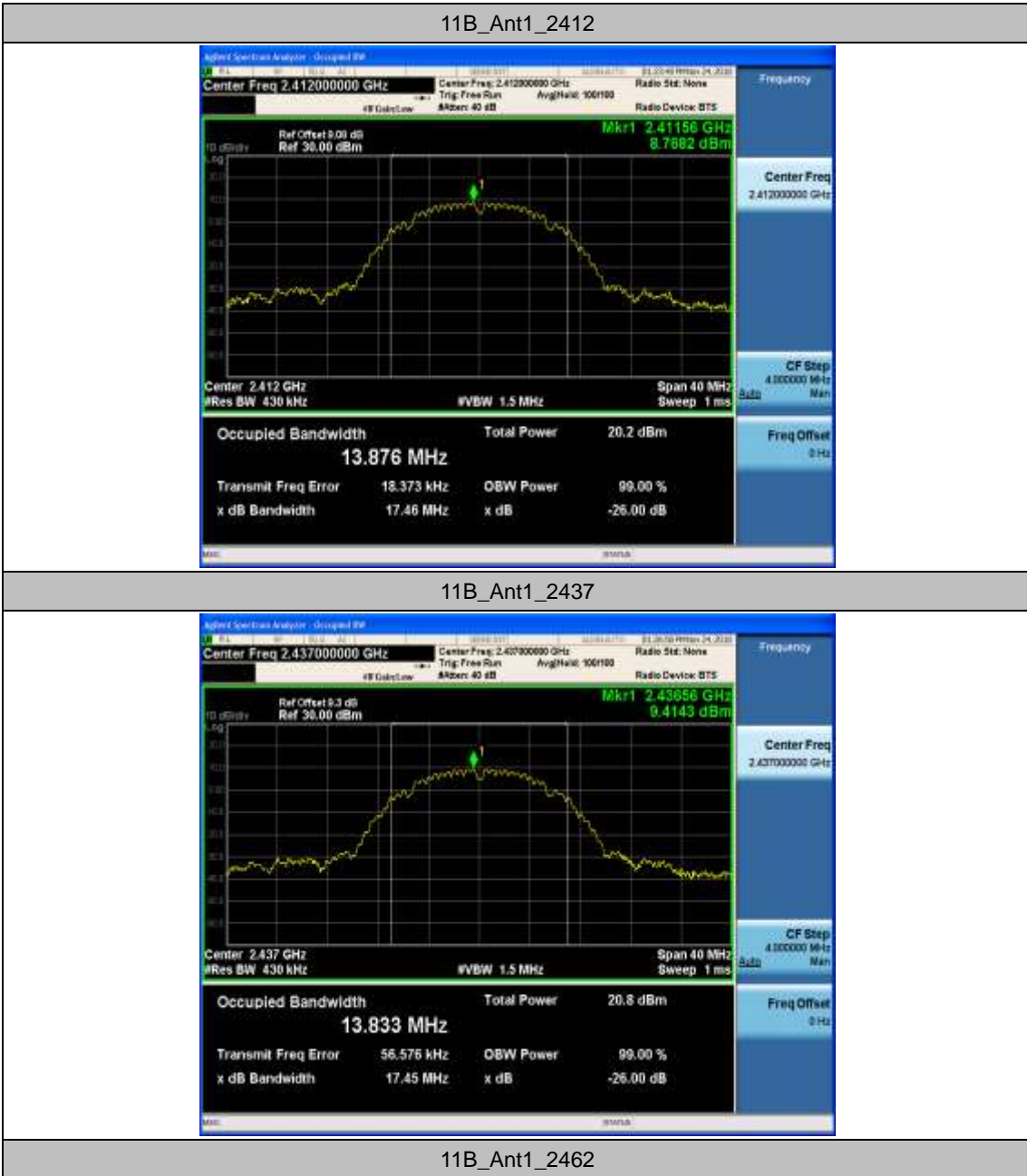
### Test Result

TestMode	Antenna	Channel	OCB [MHz]	FL[MHz]	FH[MHz]	Limit[MHz]	Verdict
11B	Ant1	2412	13.876	2405.080	2418.956	---	PASS
		2437	13.833	2430.140	2443.973	---	PASS
		2462	14.003	2454.948	2468.951	---	PASS
11G	Ant1	2412	16.660	2403.698	2420.358	---	PASS
		2417	16.782	2408.670	2425.452	---	PASS
		2422	16.789	2413.648	2430.437	---	PASS
		2437	16.602	2428.713	2445.315	---	PASS
		2452	16.753	2443.547	2460.300	---	PASS
		2457	16.778	2448.526	2465.304	---	PASS
		2462	16.722	2453.592	2470.314	---	PASS
11N20SISO	Ant1	2412	17.743	2403.152	2420.895	---	PASS
		2417	17.694	2408.220	2425.914	---	PASS
		2422	17.719	2413.202	2430.921	---	PASS
		2437	17.673	2428.196	2445.869	---	PASS
		2452	17.688	2443.115	2460.803	---	PASS
		2457	17.738	2448.073	2465.811	---	PASS
		2462	17.722	2453.129	2470.851	---	PASS
11N40SISO	Ant1	2422	36.365	2403.936	2440.301	---	PASS
		2427	36.213	2408.974	2445.187	---	PASS
		2432	36.173	2413.947	2450.120	---	PASS
		2437	36.131	2418.915	2455.046	---	PASS
		2442	36.142	2423.872	2460.014	---	PASS
		2447	36.223	2428.752	2464.975	---	PASS
		2452	36.195	2433.807	2470.002	---	PASS



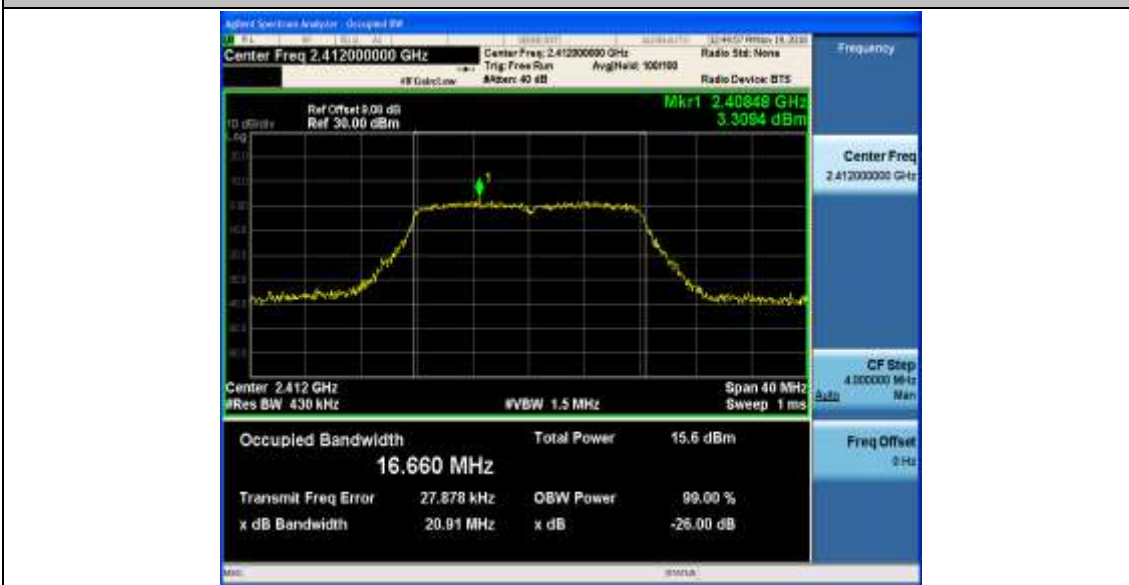


### Test Graphs





11G\_Ant1\_2412



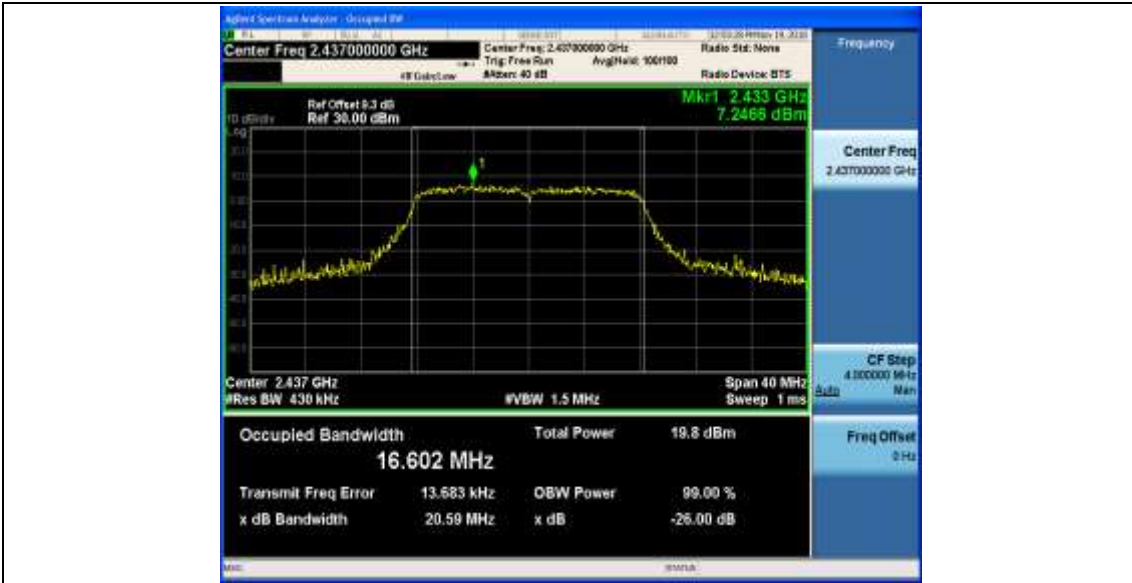
11G\_Ant1\_2417



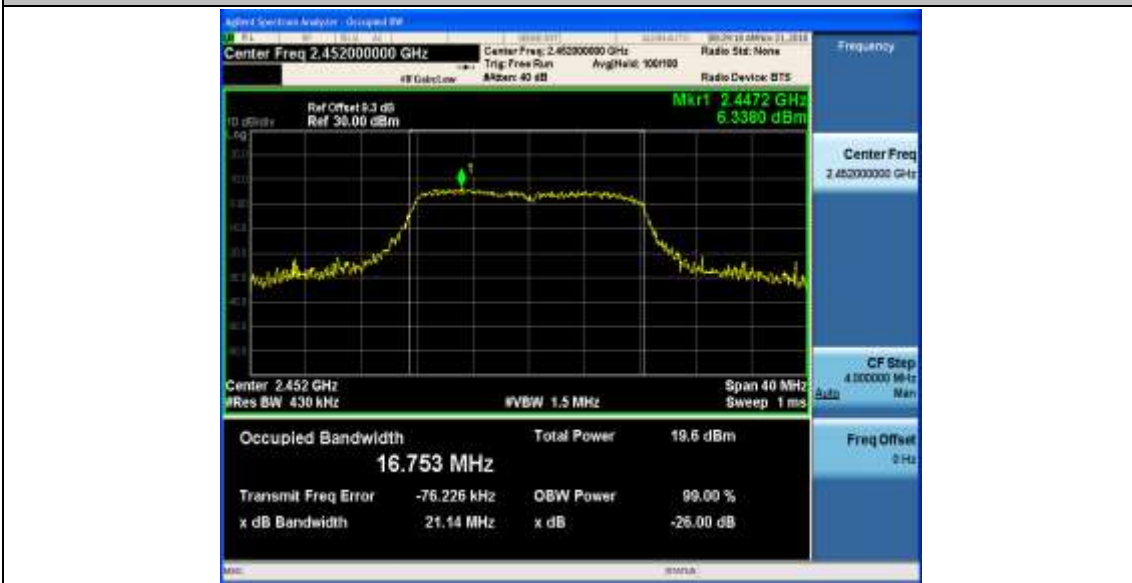
11G\_Ant1\_2422



11G\_Ant1\_2437



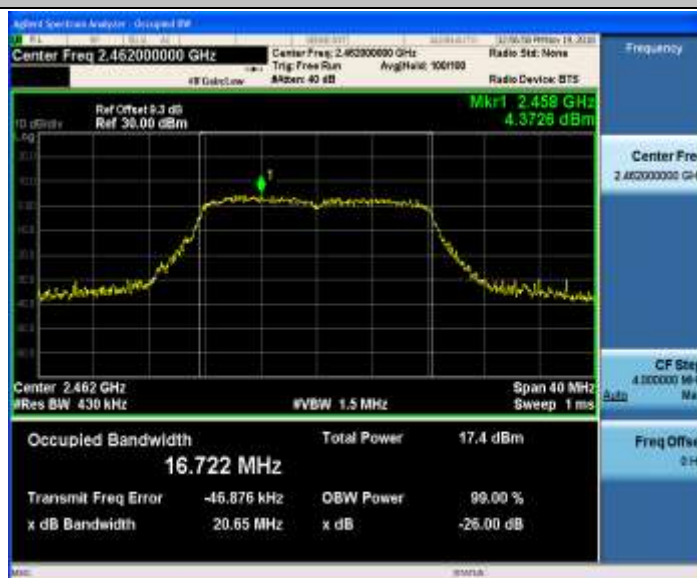
11G\_Ant1\_2452



11G\_Ant1\_2457



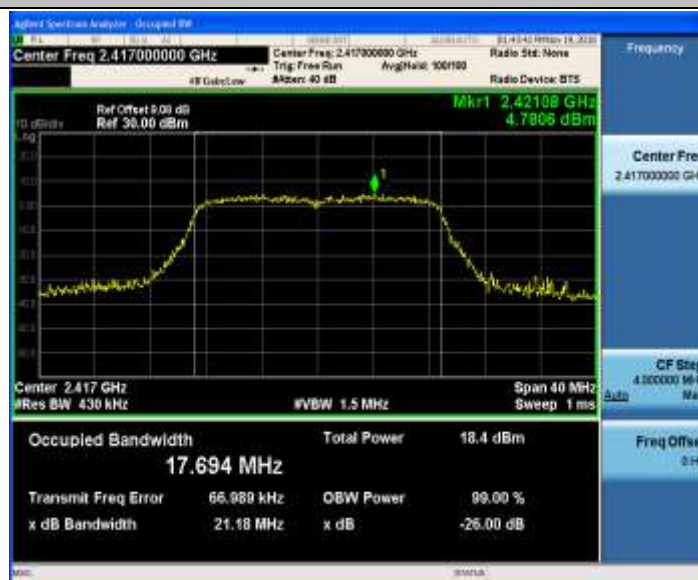
11G\_Ant1\_2462



11N20SISO\_Ant1\_2412

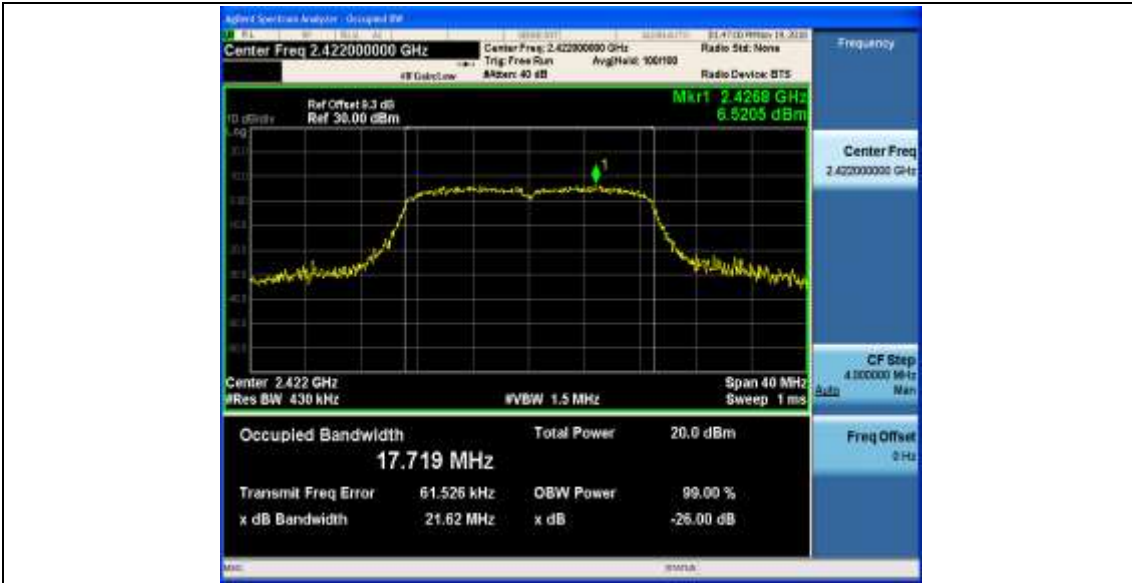


11N20SISO\_Ant1\_2417

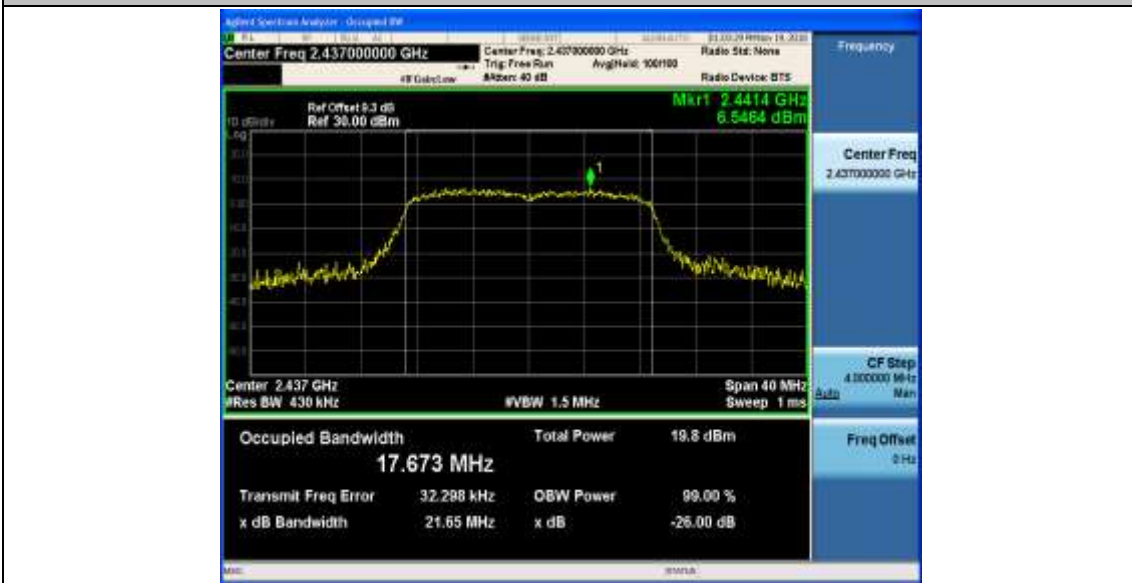


11N20SISO\_Ant1\_2422



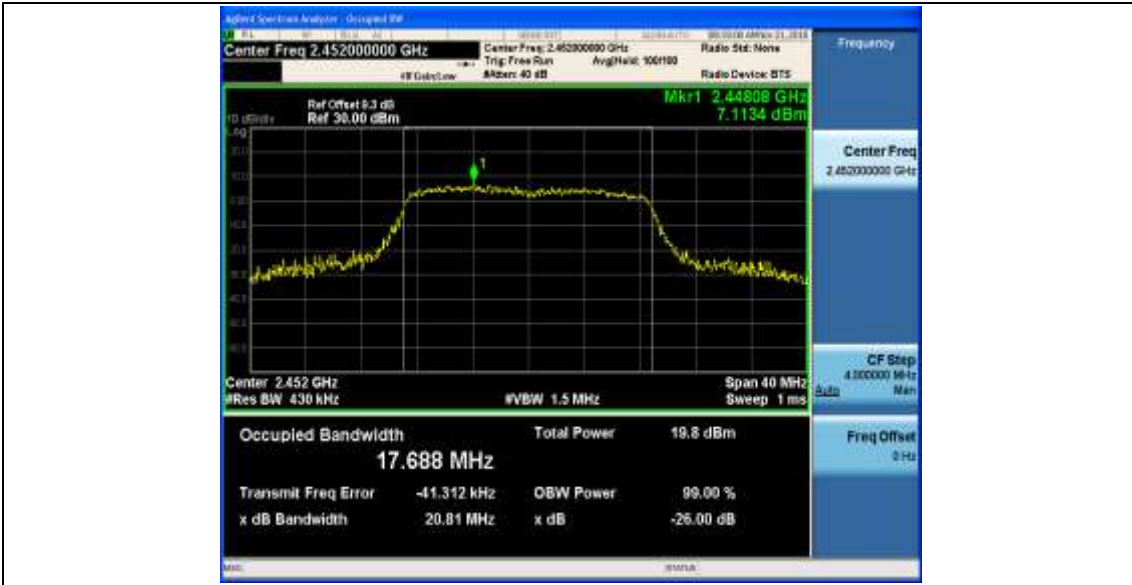


11N20SISO\_Ant1\_2437

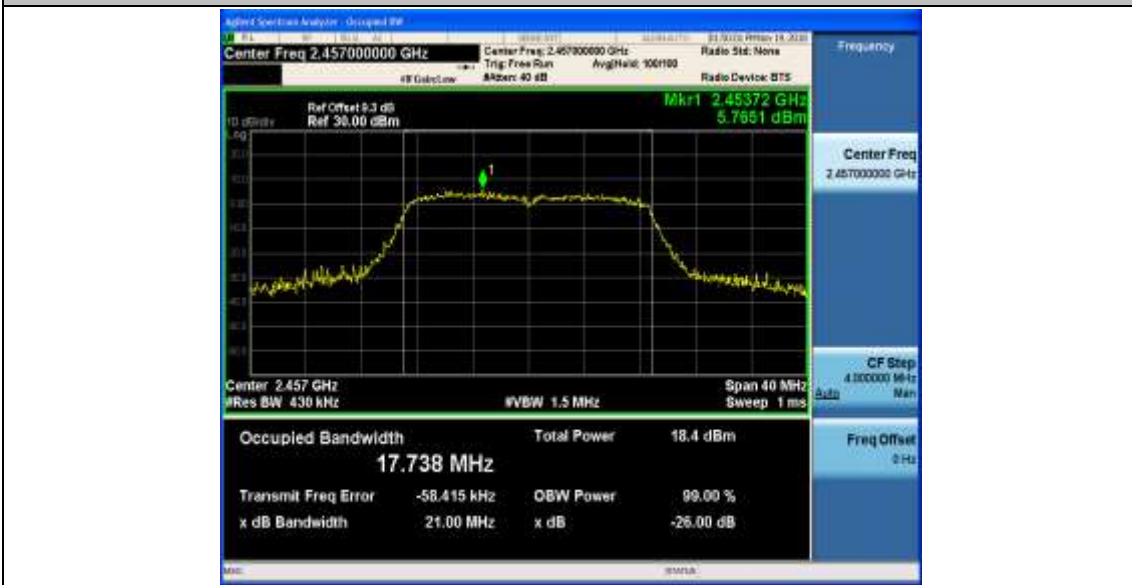


11N20SISO\_Ant1\_2452





11N20SISO\_Ant1\_2457



11N20SISO\_Ant1\_2462



11N40SISO\_Ant1\_2422



11N40SISO\_Ant1\_2427



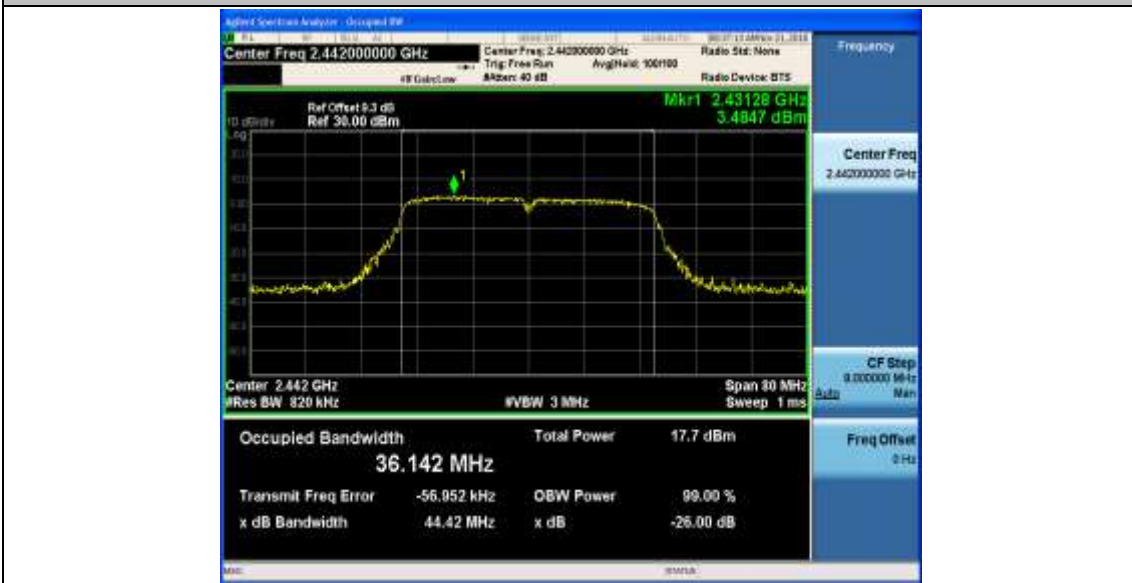
11N40SISO\_Ant1\_2432



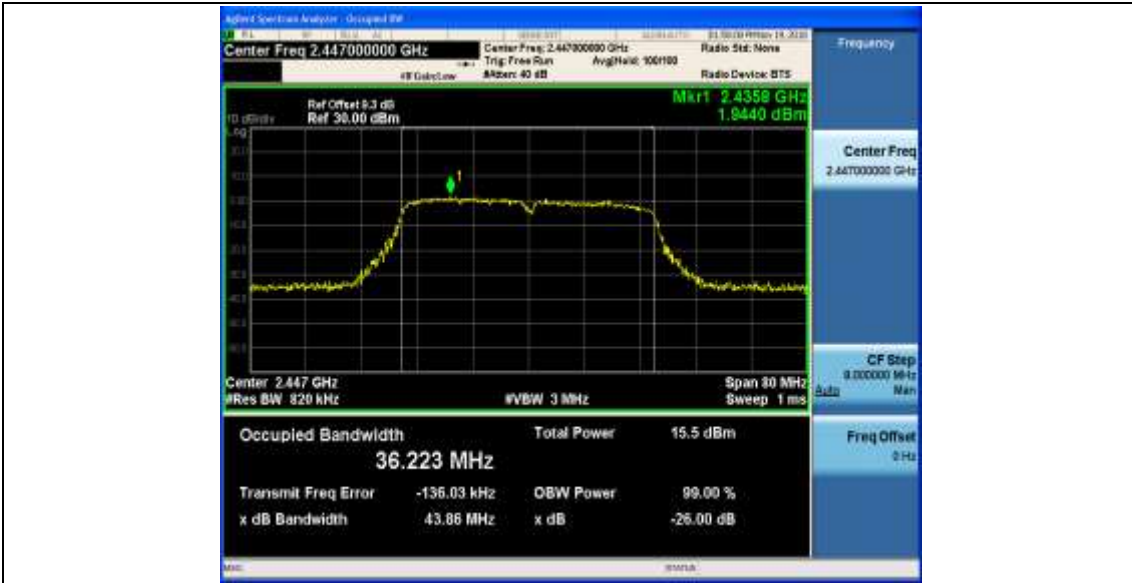
11N40SISO\_Ant1\_2437



11N40SISO\_Ant1\_2442



11N40SISO\_Ant1\_2447



11N40SISO\_Ant1\_2452





## Appendix C: Duty Cycle

### Test Result

TestMode	Antenna	Channel	Transmission Duration [ms]	Transmission Period [ms]	Duty Cycle [%]
11B	Ant1	2412	8.22	8.42	97.59
		2437	8.22	8.42	97.59
		2462	8.22	8.42	97.59
11G	Ant1	2412	1.36	1.56	87.12
		2417	1.36	1.56	87.12
		2422	1.36	1.56	87.12
		2437	1.36	1.56	87.19
		2452	1.36	1.56	87.12
		2457	1.36	1.56	87.12
		2462	1.36	1.56	87.12
11N20SISO	Ant1	2412	1.27	1.47	86.43
		2417	1.27	1.47	86.34
		2422	1.27	1.47	86.41
		2437	1.27	1.47	86.34
		2452	1.27	1.47	86.41
		2457	1.27	1.47	86.34
		2462	1.27	1.47	86.34
11N40SISO	Ant1	2422	0.63	0.84	75.91
		2427	0.63	0.84	75.76
		2432	0.63	0.83	75.87
		2437	0.63	0.84	75.76
		2442	0.63	0.84	75.91
		2447	0.63	0.84	75.76
		2452	0.63	0.83	75.87



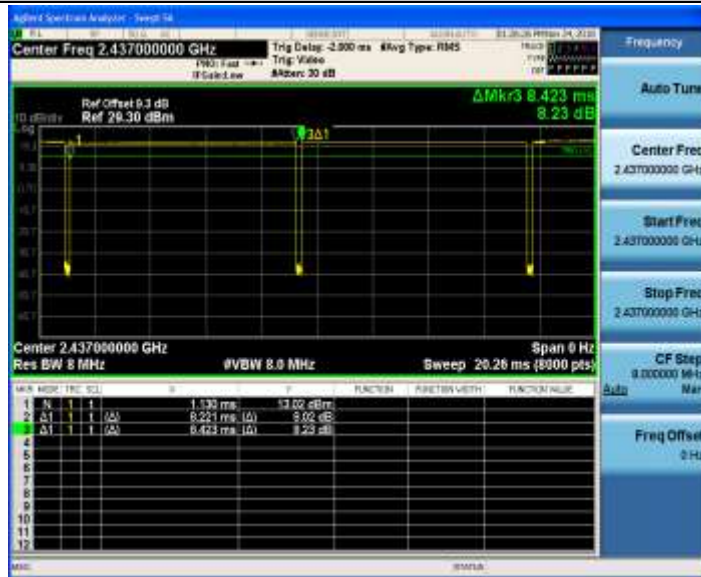


### Test Graphs

11B\_Ant1\_2412



11B\_Ant1\_2437

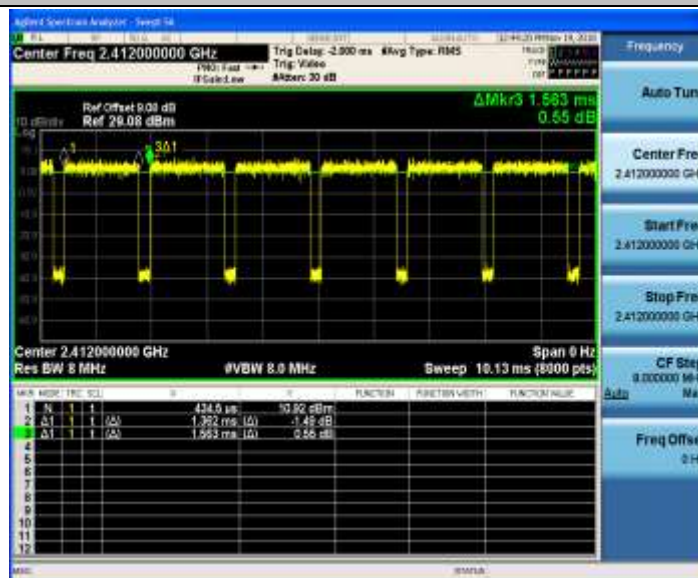


11B\_Ant1\_2462

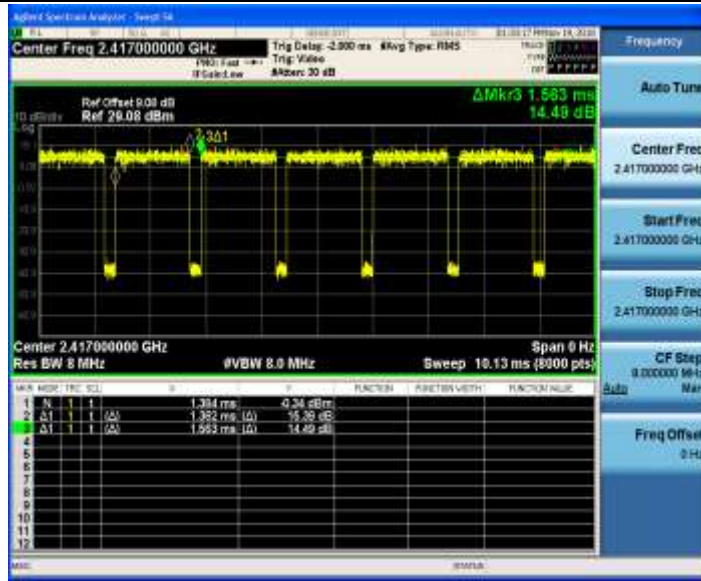




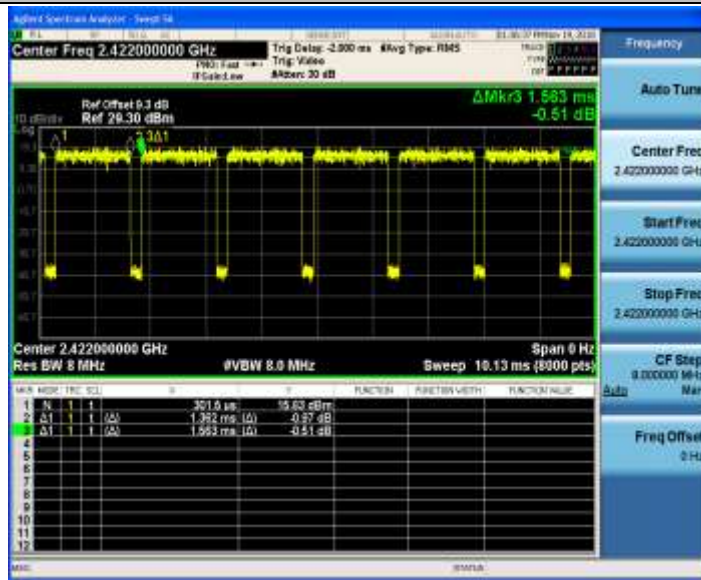
11G\_Ant1\_2412



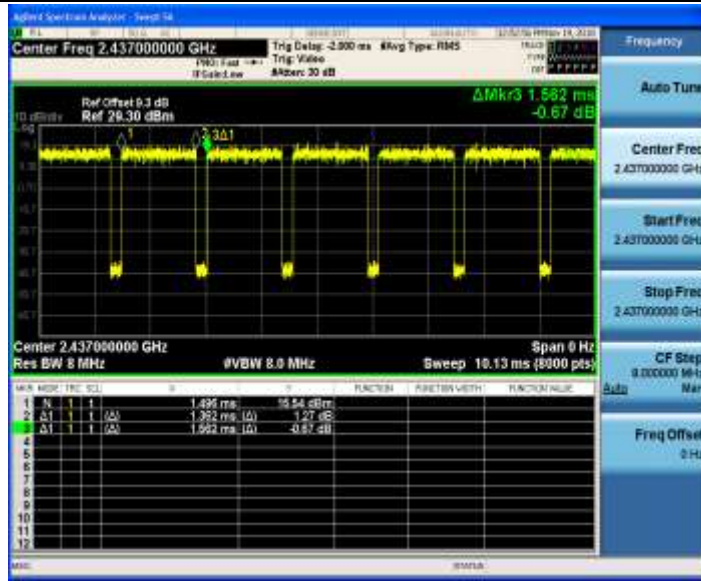
11G\_Ant1\_2417



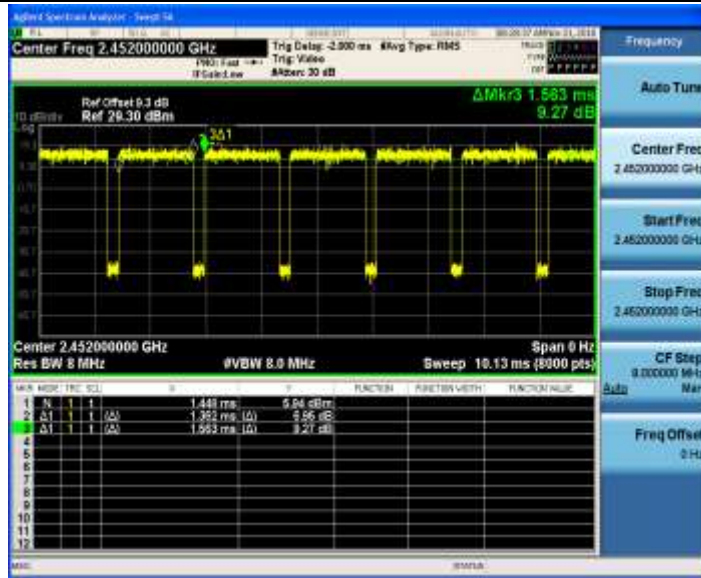
11G\_Ant1\_2422



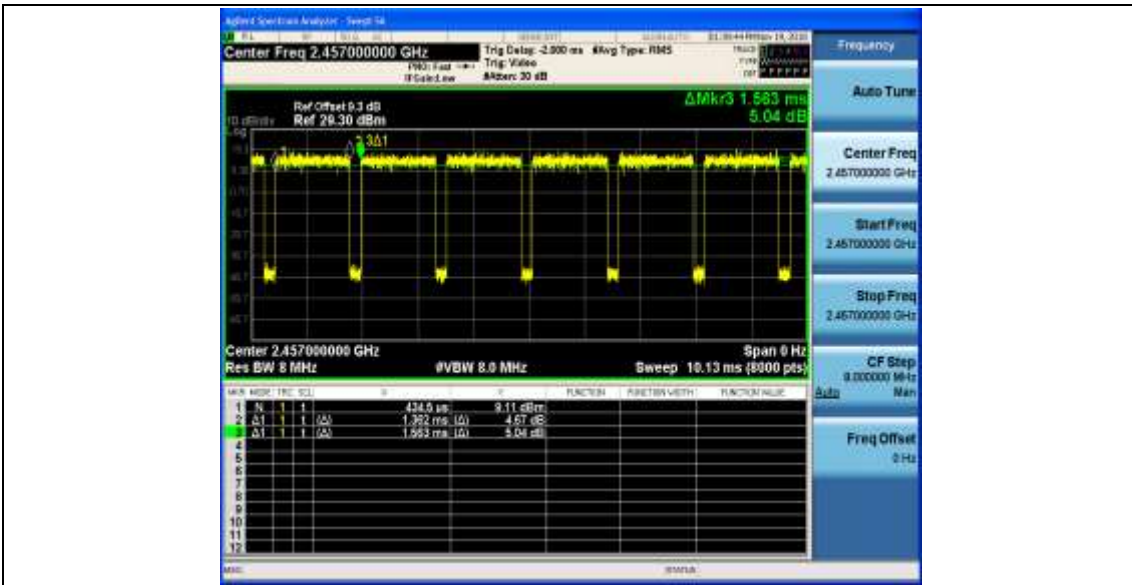
11G\_Ant1\_2437



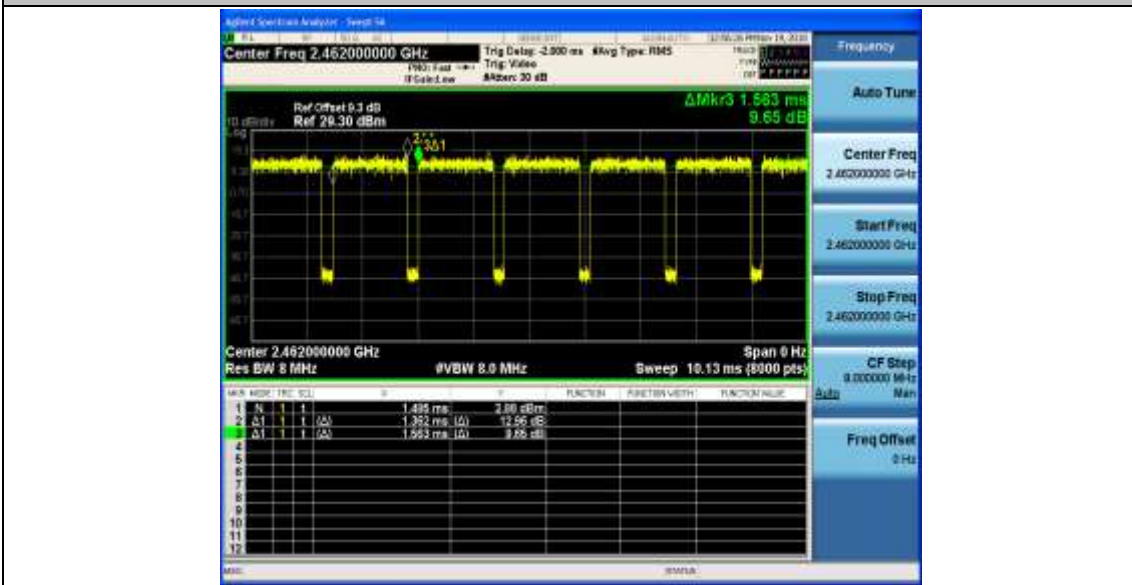
11G\_Ant1\_2452



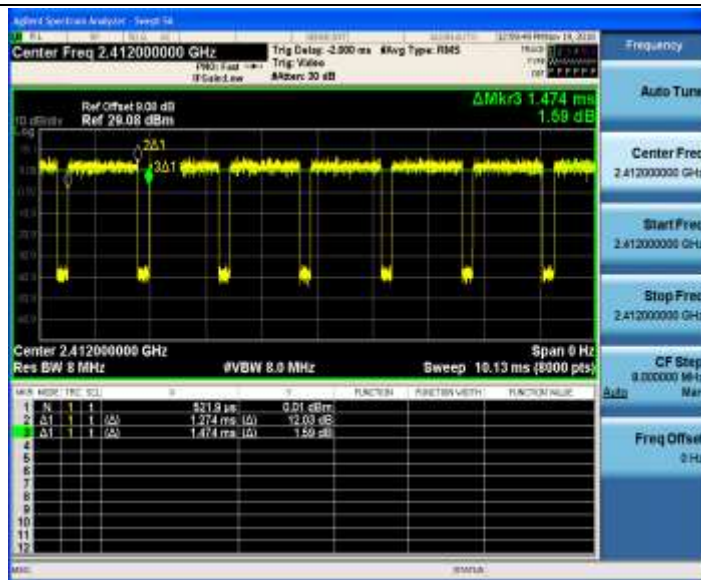
11G\_Ant1\_2457



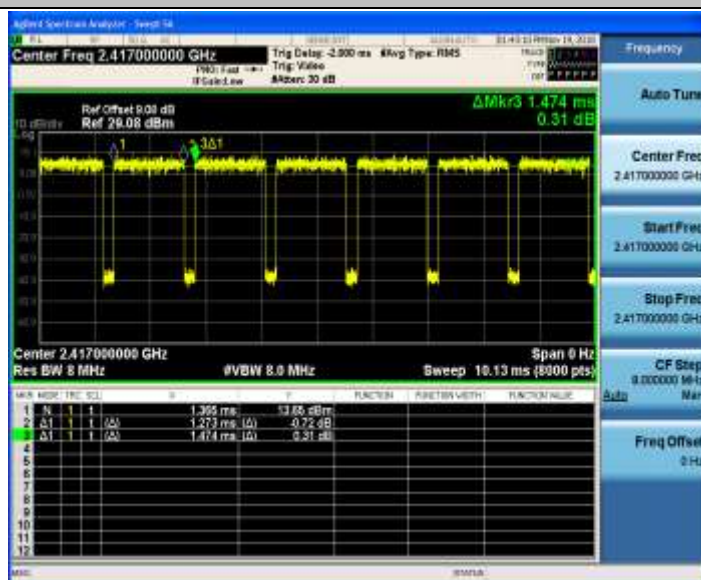
11G\_Ant1\_2462



11N20SISO\_Ant1\_2412

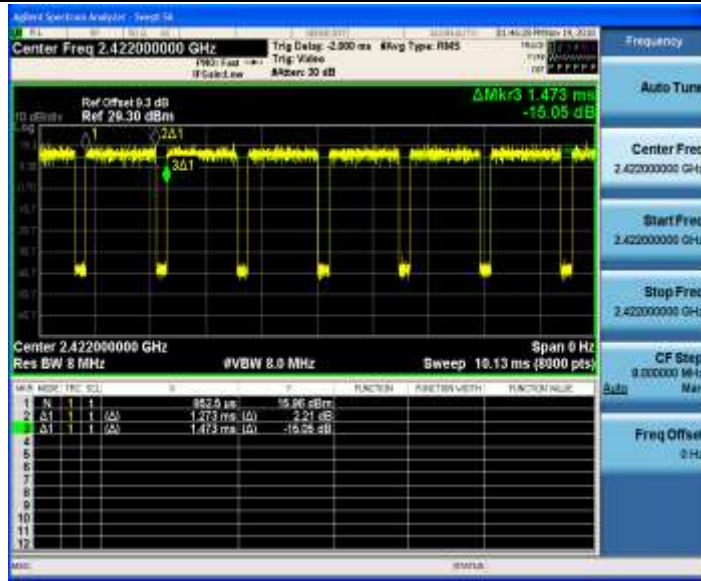


11N20SISO\_Ant1\_2417

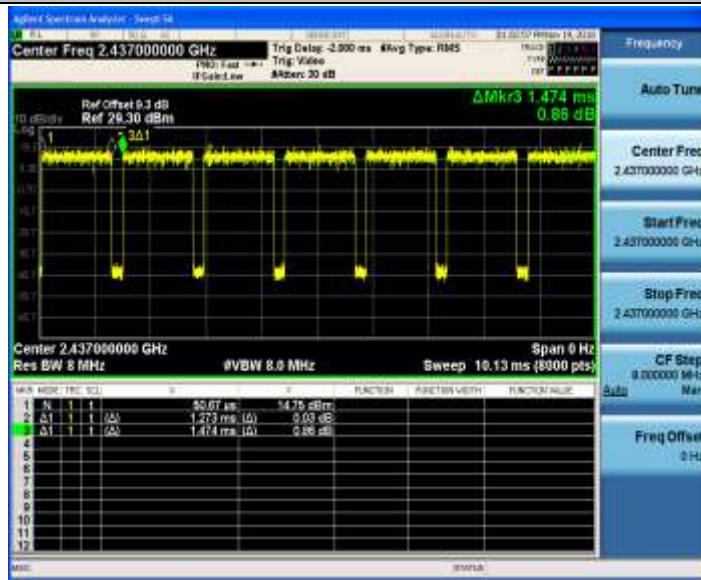


11N20SISO\_Ant1\_2422



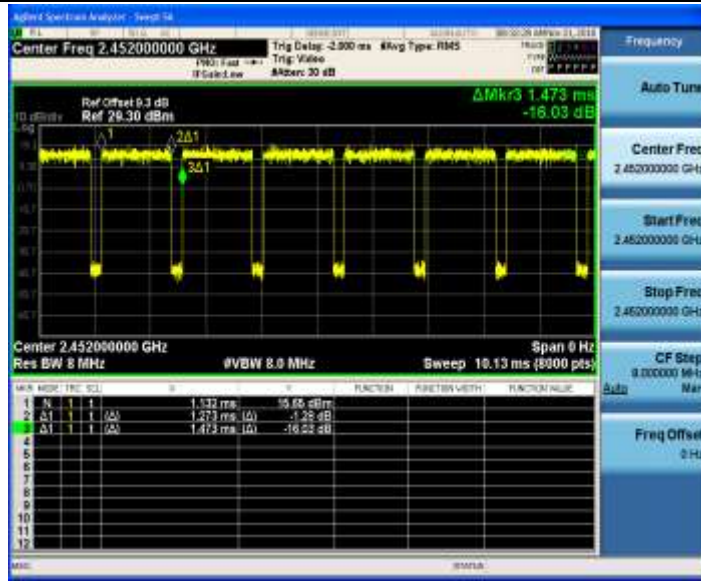


11N20SISO\_Ant1\_2437

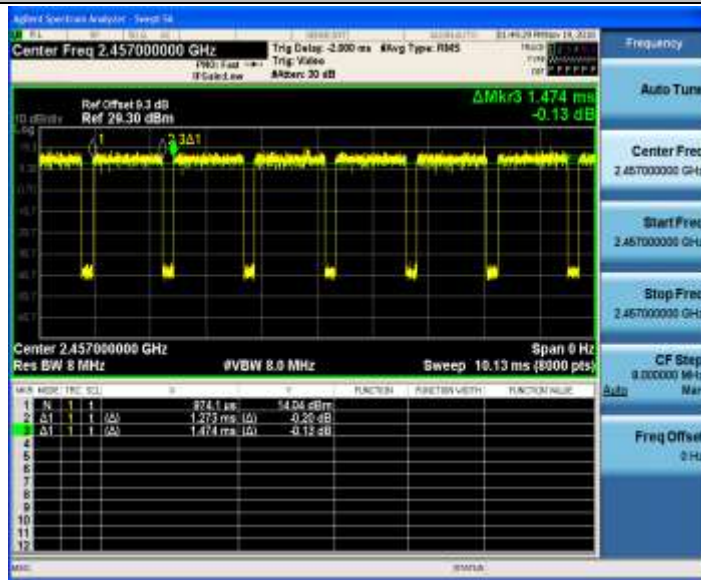


11N20SISO\_Ant1\_2452

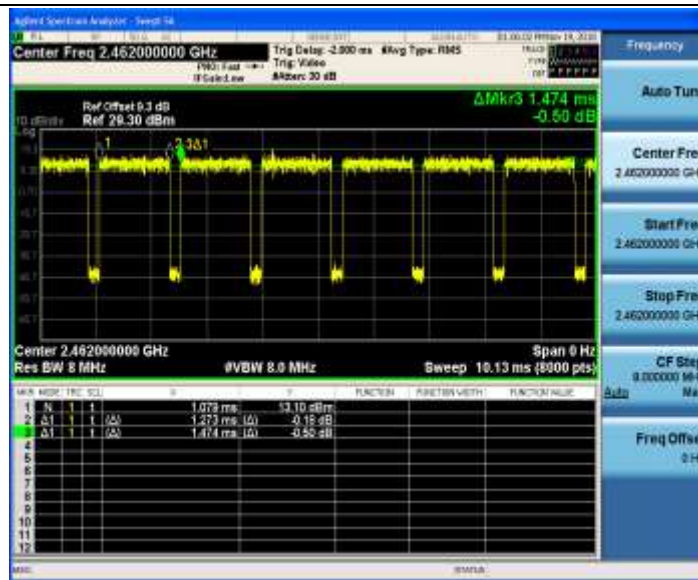




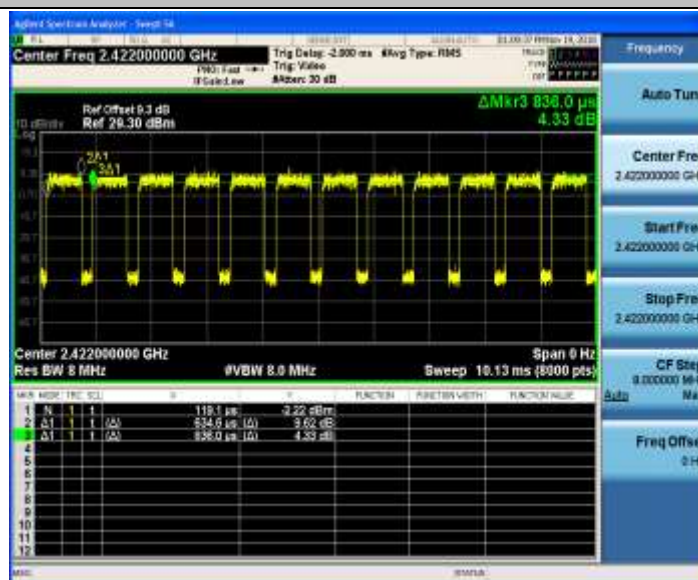
11N20SISO\_Ant1\_2457



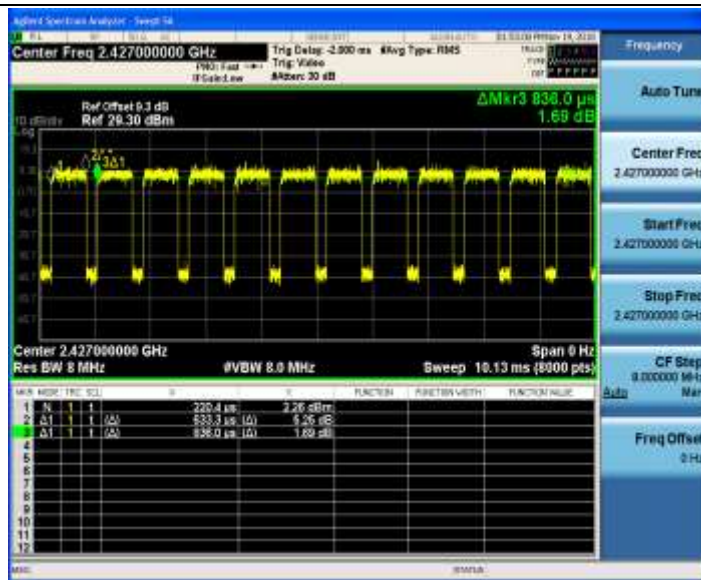
11N20SISO\_Ant1\_2462



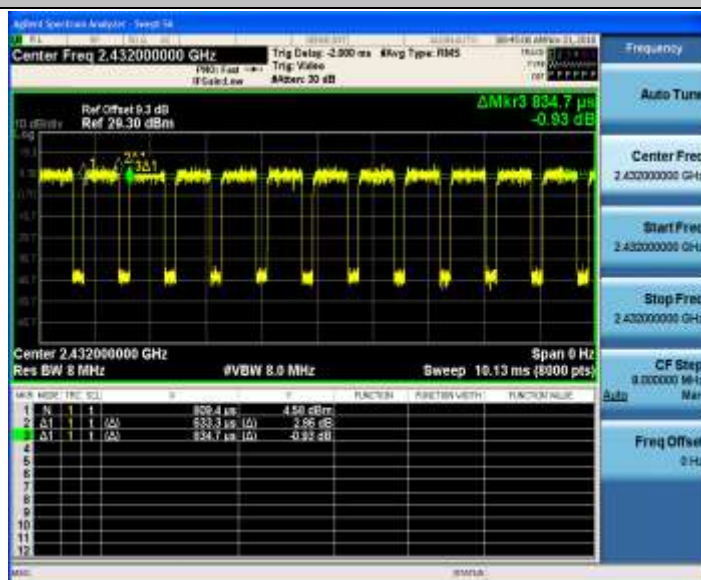
11N40SISO\_Ant1\_2422



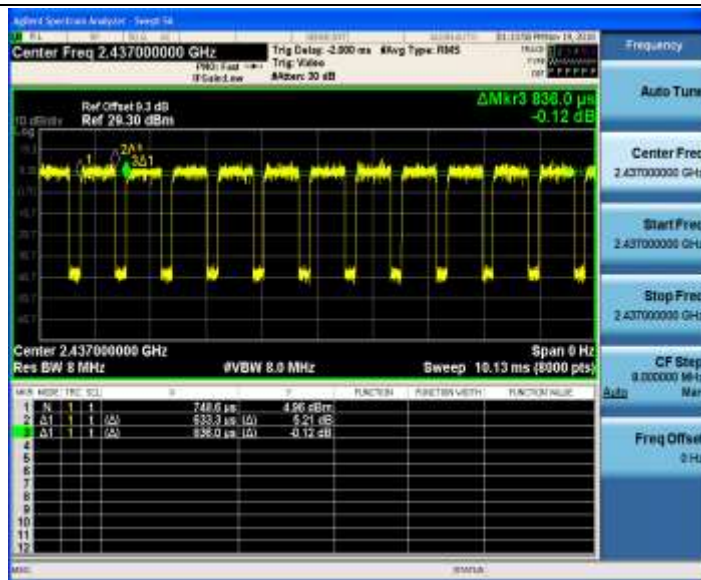
11N40SISO\_Ant1\_2427



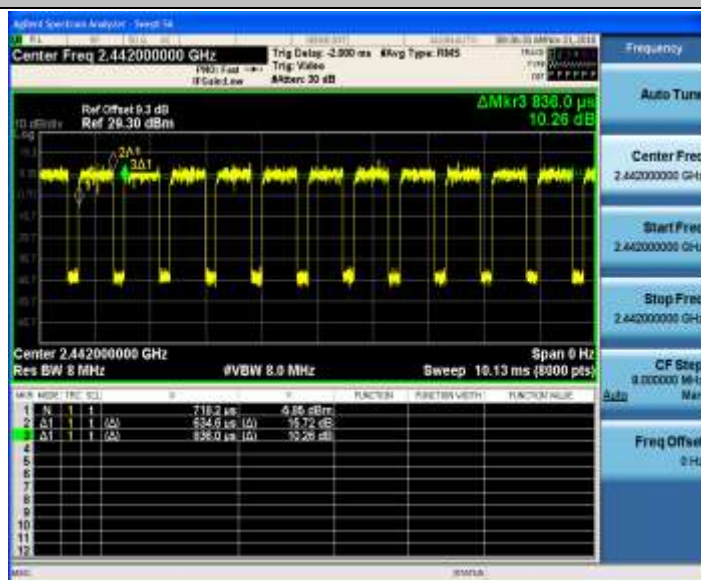
11N40SISO\_Ant1\_2432



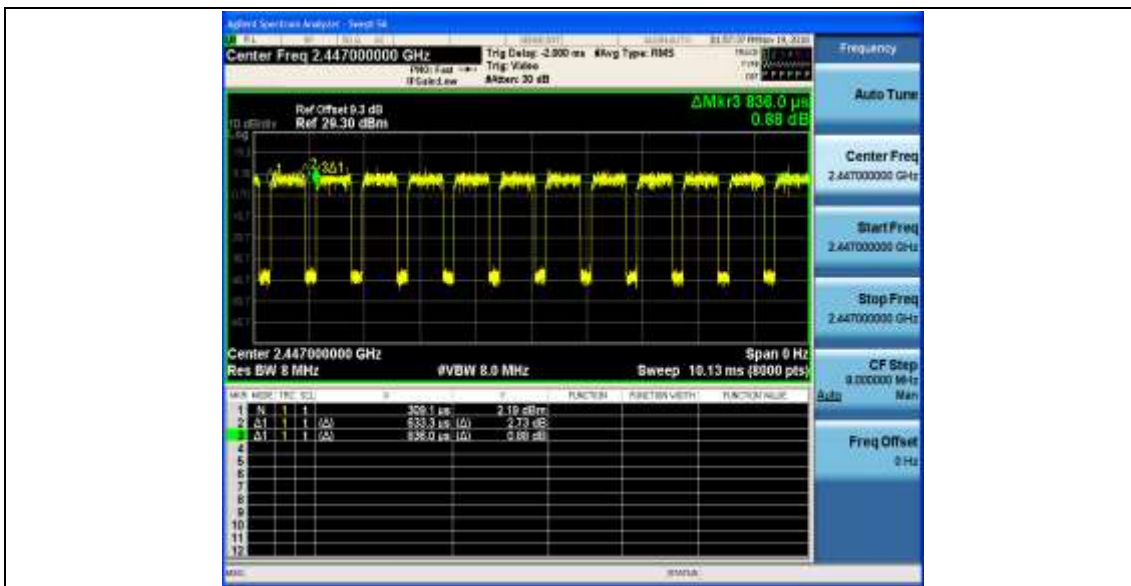
11N40SISO\_Ant1\_2437



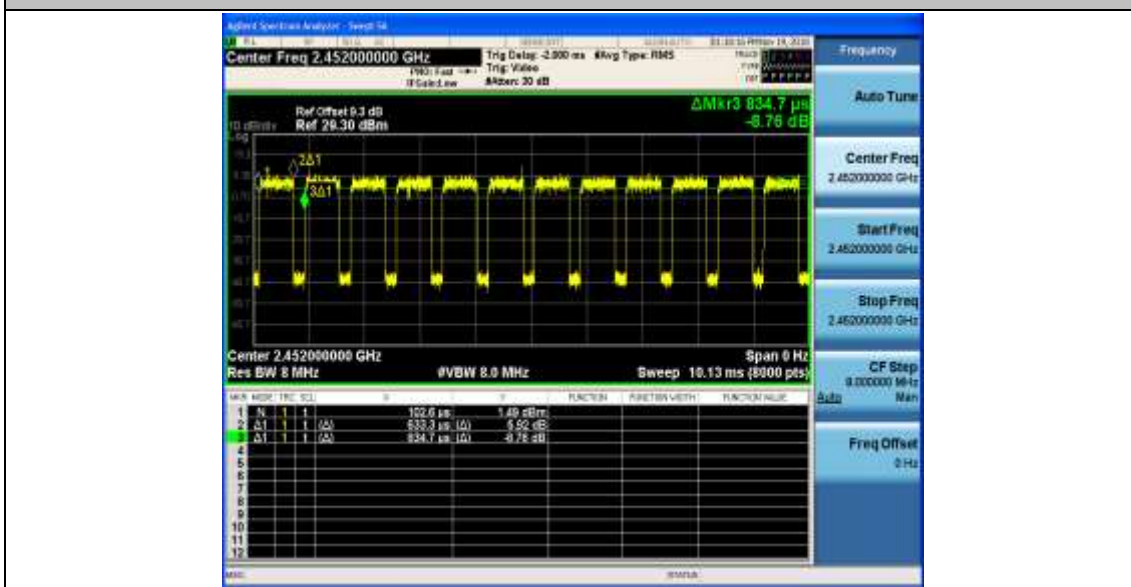
11N40SISO\_Ant1\_2442



11N40SISO\_Ant1\_2447



11N40SISO\_Ant1\_2452







## Appendix D: Maximum conducted Average output power

### Test Result

TestMode	Antenna	Channel	Result[dBm]	Limit[dBm]	Verdict
11B	Ant1	2412	17.37	30	PASS
		2437	17.89	30	PASS
		2462	17.27	30	PASS
11G	Ant1	2412	9.59	30	PASS
		2417	12.29	30	PASS
		2422	14.02	30	PASS
		2437	13.71	30	PASS
		2452	13.55	30	PASS
		2457	12.43	30	PASS
		2462	11.36	30	PASS
11N20SISO	Ant1	2412	9.68	30	PASS
		2417	12.28	30	PASS
		2422	13.98	30	PASS
		2437	13.62	30	PASS
		2452	13.66	30	PASS
		2457	12.39	30	PASS
		2462	11.27	30	PASS
11N40SISO	Ant1	2422	8.37	30	PASS
		2427	9.60	30	PASS
		2432	10.77	30	PASS
		2437	10.86	30	PASS
		2442	10.89	30	PASS
		2447	8.69	30	PASS
		2452	7.91	30	PASS

Note: The Duty Cycle Factor is compensated in the graph.



## Test Graphs

11B\_Ant1\_2412



11B\_Ant1\_2437



11B\_Ant1\_2462



11G\_Ant1\_2412



11G\_Ant1\_2417



11G\_Ant1\_2422



11G\_Ant1\_2437



11G\_Ant1\_2452



11G\_Ant1\_2457



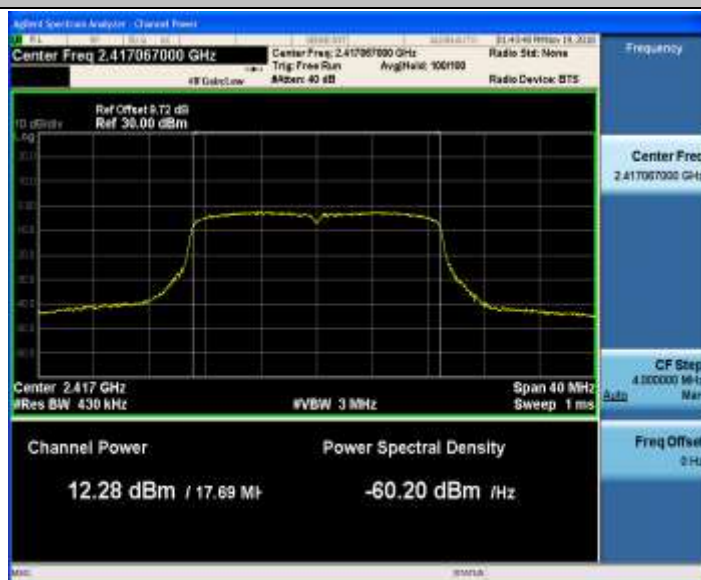
11G\_Ant1\_2462



11N20SISO\_Ant1\_2412

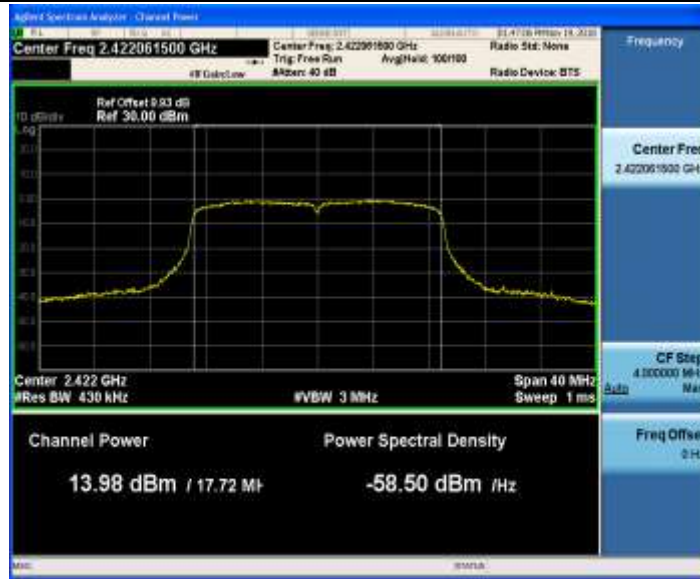


11N20SISO\_Ant1\_2417



11N20SISO\_Ant1\_2422





11N20SISO\_Ant1\_2437



11N20SISO\_Ant1\_2452



11N20SISO\_Ant1\_2457



11N20SISO\_Ant1\_2462



11N40SISO\_Ant1\_2422



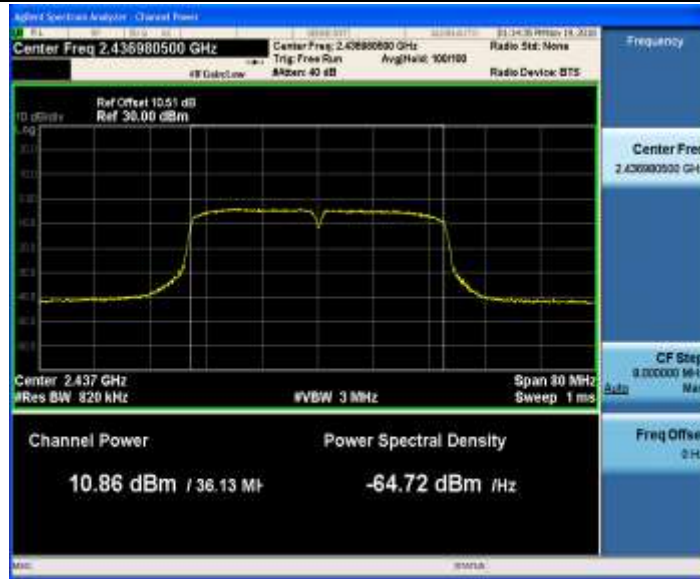
11N40SISO\_Ant1\_2427



11N40SISO\_Ant1\_2432



11N40SISO\_Ant1\_2437



11N40SISO\_Ant1\_2442



11N40SISO\_Ant1\_2447



11N40SISO\_Ant1\_2452







## Appendix E: Maximum power spectral density

### Test Result

TestMode	Antenna	Channel	Result[dBm/10kHz]	Limit[dBm/3kHz]	Verdict
11B	Ant1	2412	-9.32	8	PASS
		2437	-8.80	8	PASS
		2462	-9.46	8	PASS
11G	Ant1	2412	-18.89	8	PASS
		2417	-16.26	8	PASS
		2422	-14.74	8	PASS
		2437	-14.37	8	PASS
		2452	-14.56	8	PASS
		2457	-15.93	8	PASS
		2462	-16.49	8	PASS
11N20SISO	Ant1	2412	-19.12	8	PASS
		2417	-16.32	8	PASS
		2422	-14.96	8	PASS
		2437	-15.15	8	PASS
		2452	-14.46	8	PASS
		2457	-16.06	8	PASS
		2462	-16.95	8	PASS
11N40SISO	Ant1	2422	-22.18	8	PASS
		2427	-21.3	8	PASS
		2432	-20.36	8	PASS
		2437	-19.67	8	PASS
		2442	-19.3	8	PASS
		2452	-22.67	8	PASS

Note: The Duty Cycle Factor is compensated in the graph.

### Test Graphs

11B\_Ant1\_2412



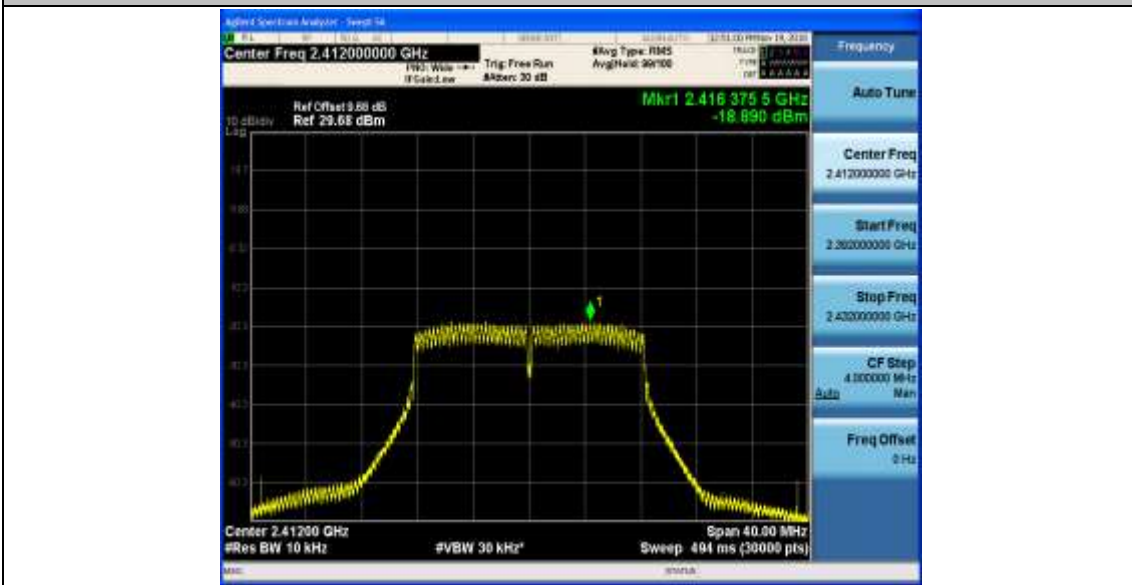
11B\_Ant1\_2437



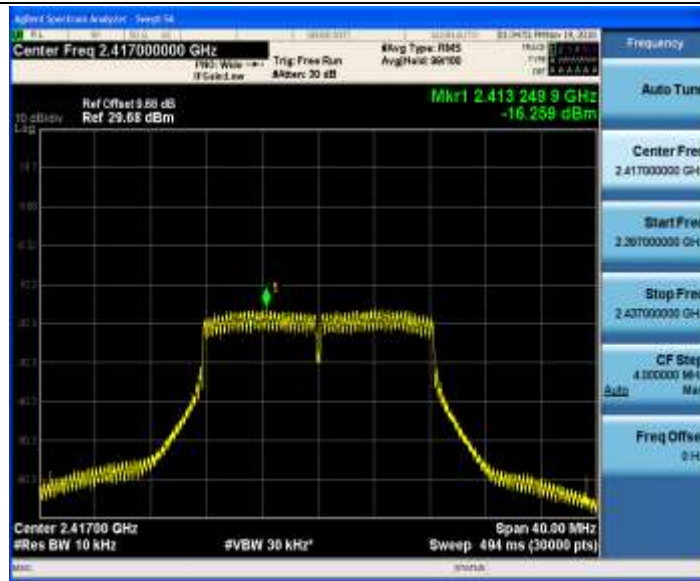
11B\_Ant1\_2462



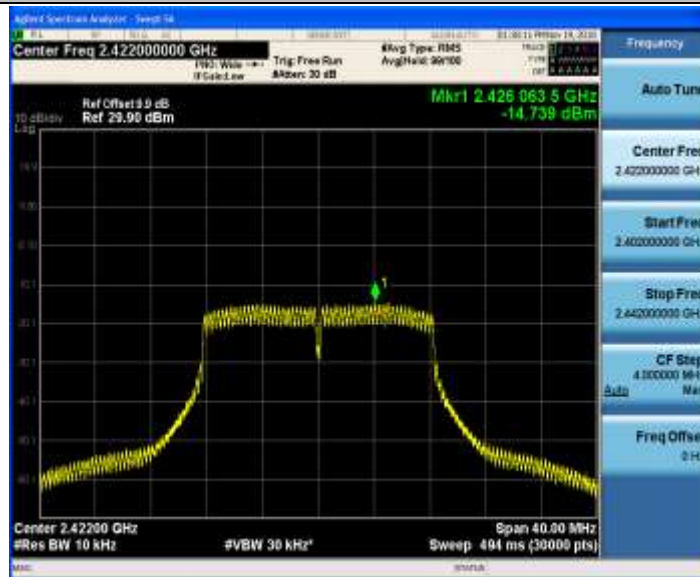
11G\_Ant1\_2412



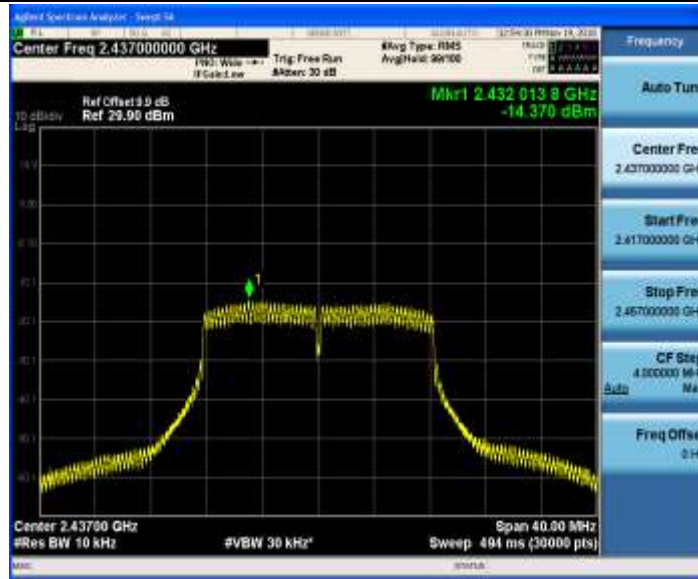
11G\_Ant1\_2417



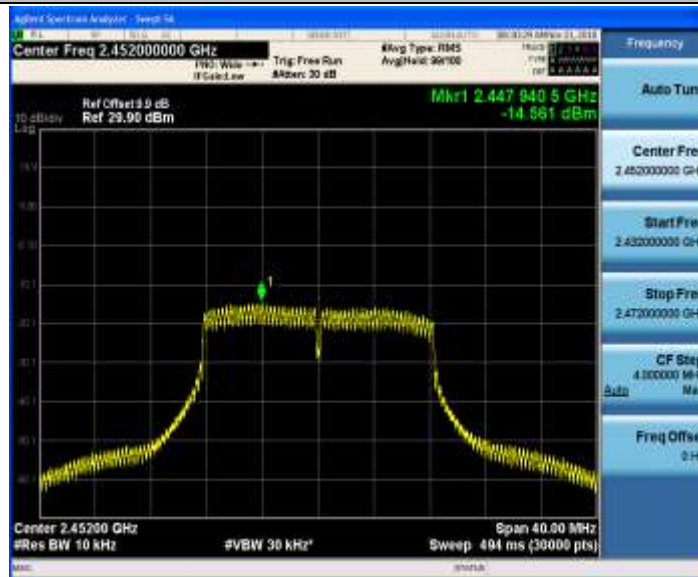
11G\_Ant1\_2422



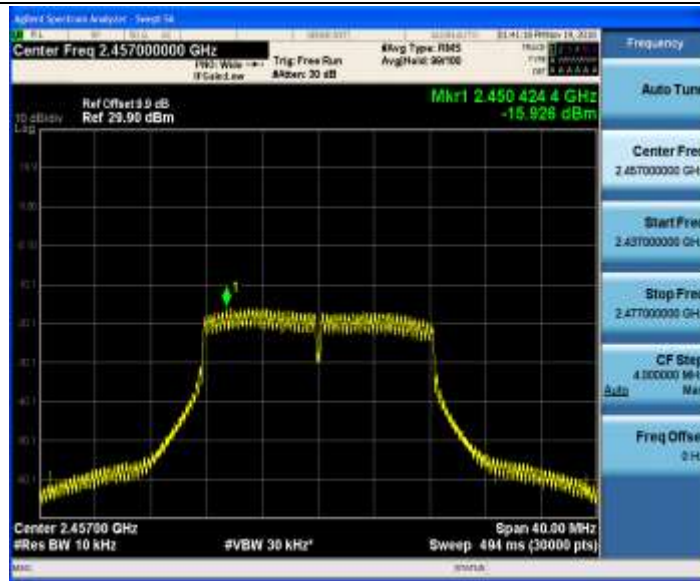
11G\_Ant1\_2437



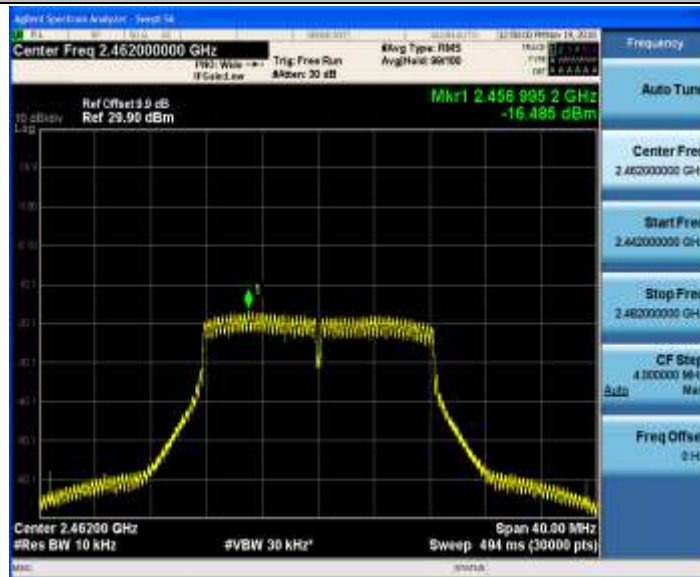
11G\_Ant1\_2452



11G\_Ant1\_2457

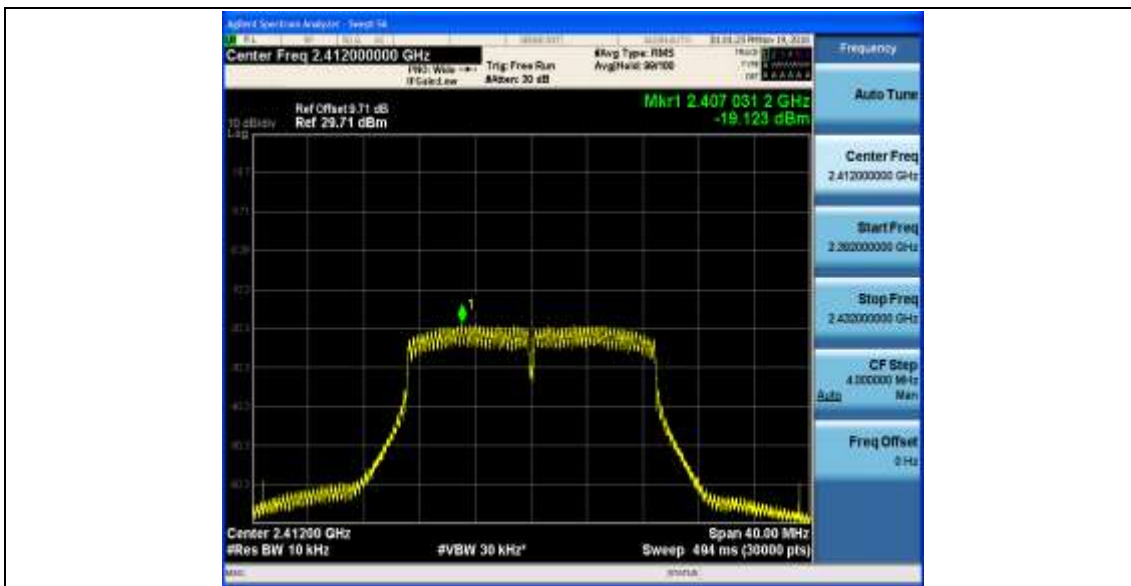


11G\_Ant1\_2462

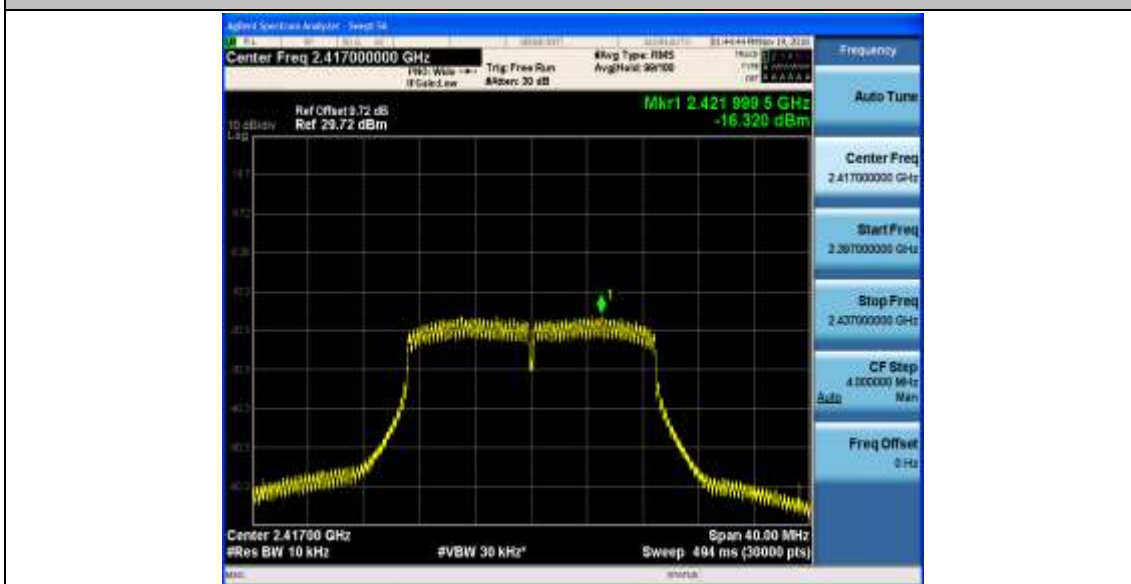


11N20SISO\_Ant1\_2412

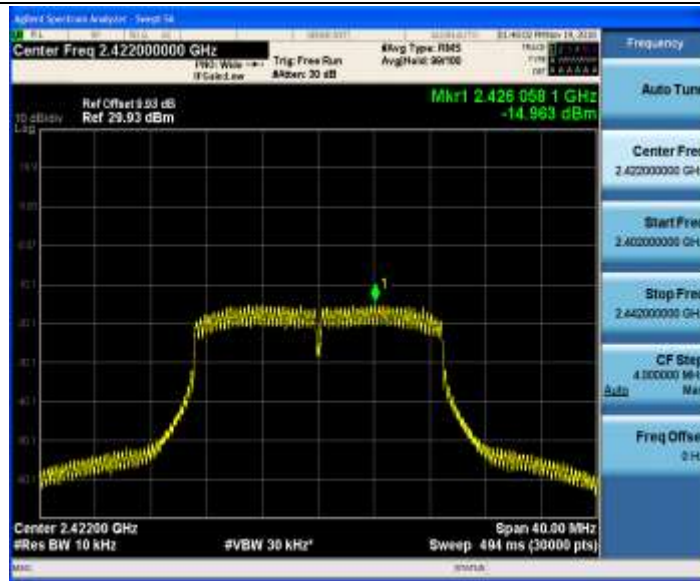




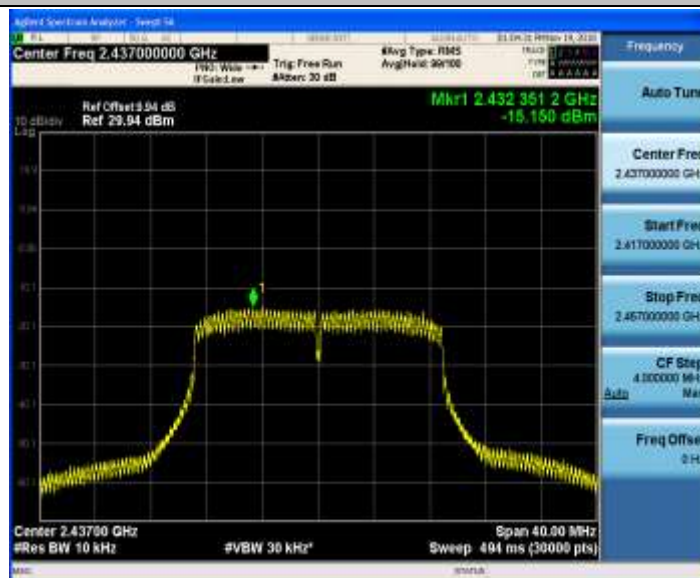
11N20SISO\_Ant1\_2417



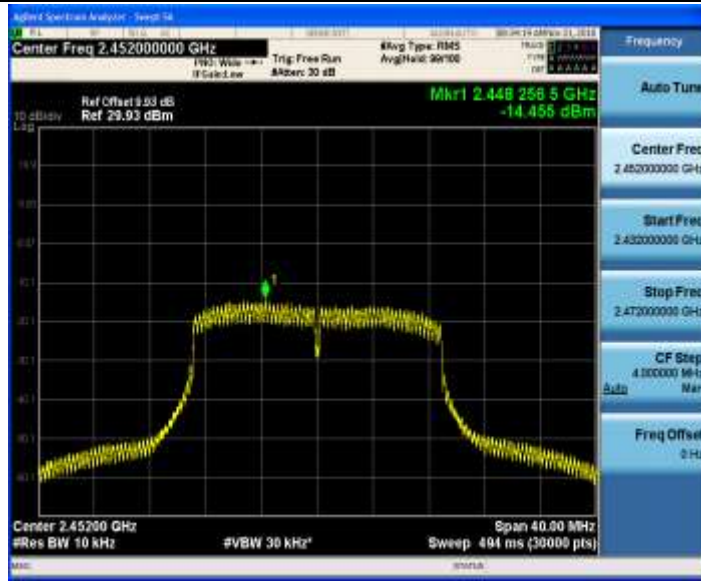
11N20SISO\_Ant1\_2422



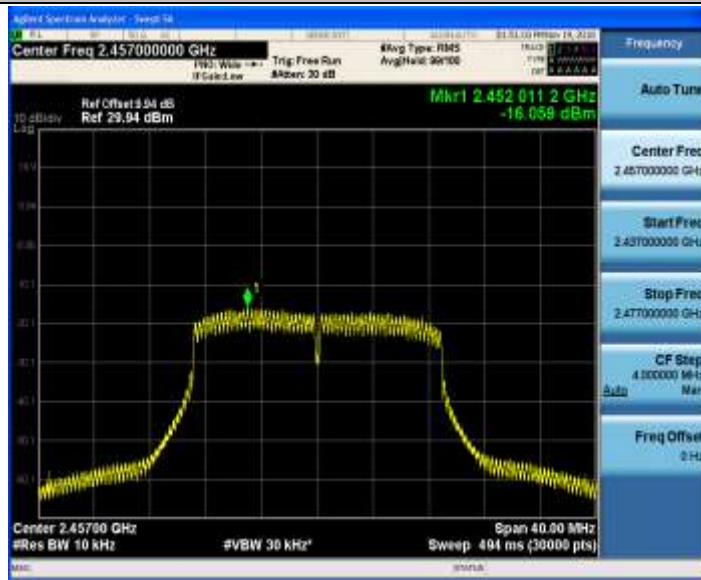
11N20SISO\_Ant1\_2437



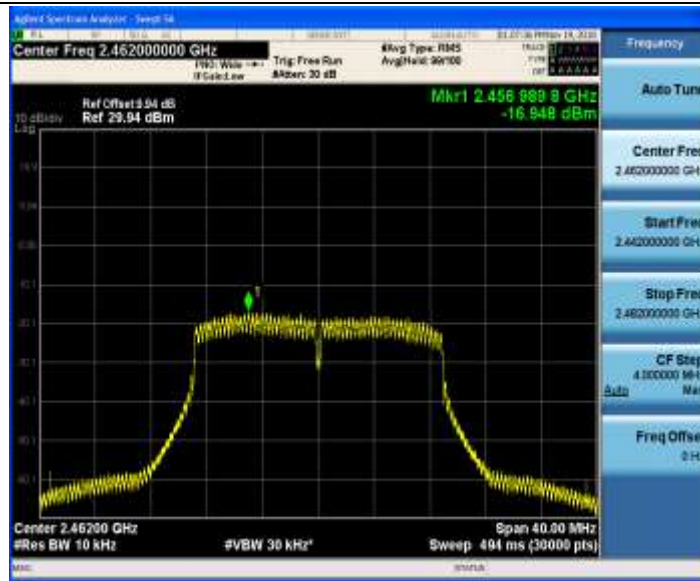
11N20SISO\_Ant1\_2452



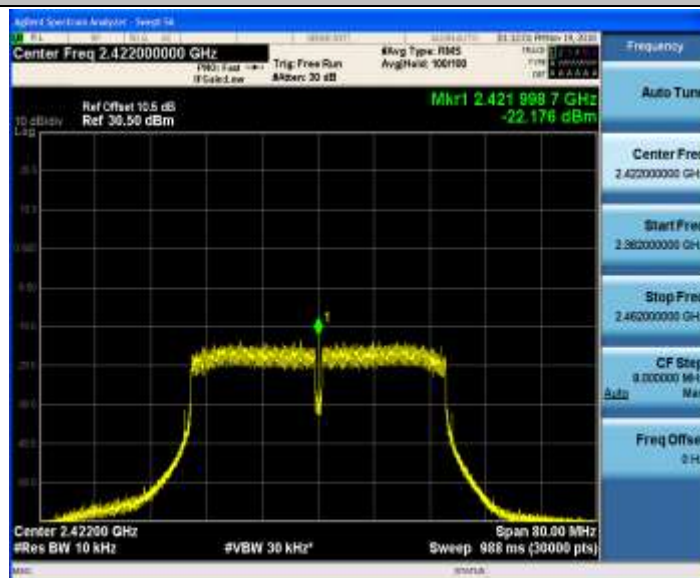
11N20SISO\_Ant1\_2457



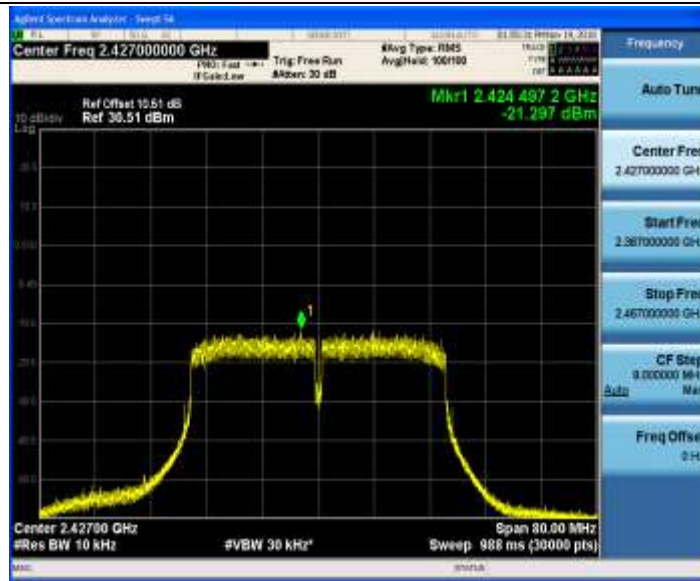
11N20SISO\_Ant1\_2462



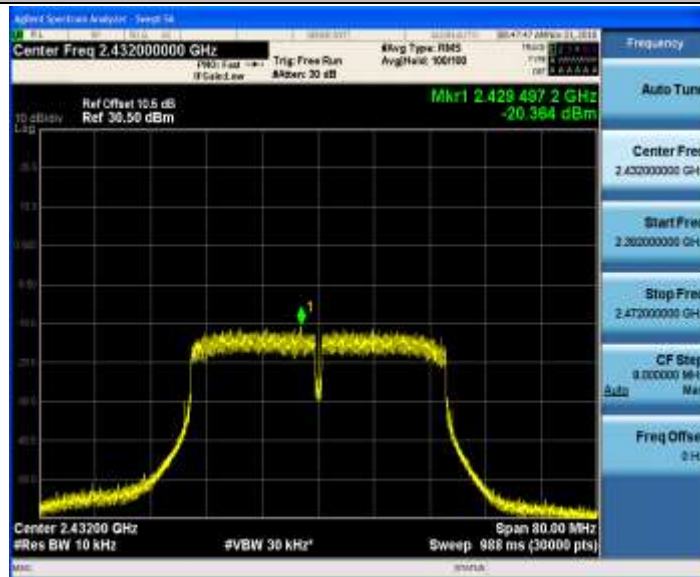
11N40SISO\_Ant1\_2422



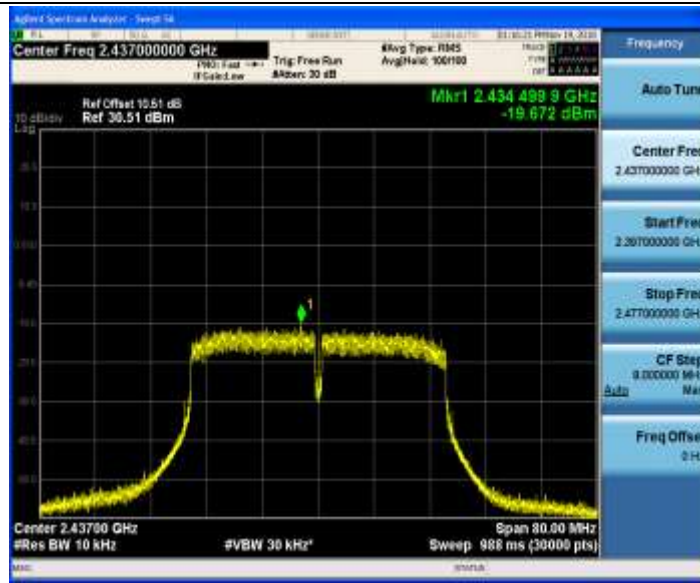
11N40SISO\_Ant1\_2427



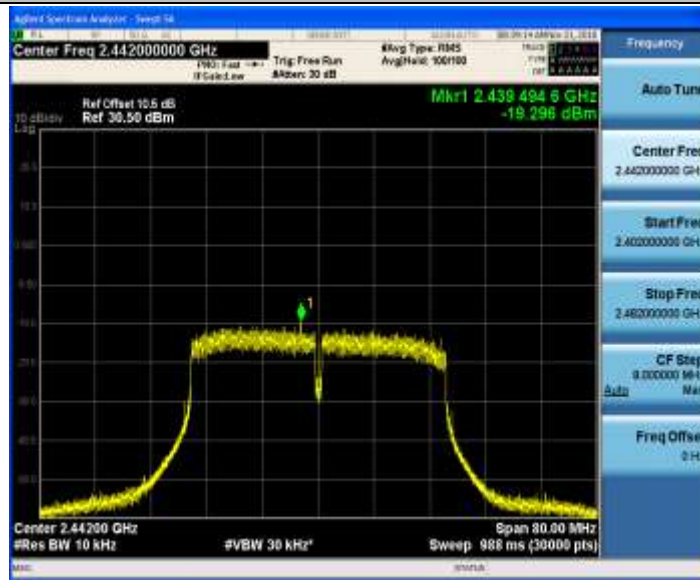
11N40SISO\_Ant1\_2432



11N40SISO\_Ant1\_2437

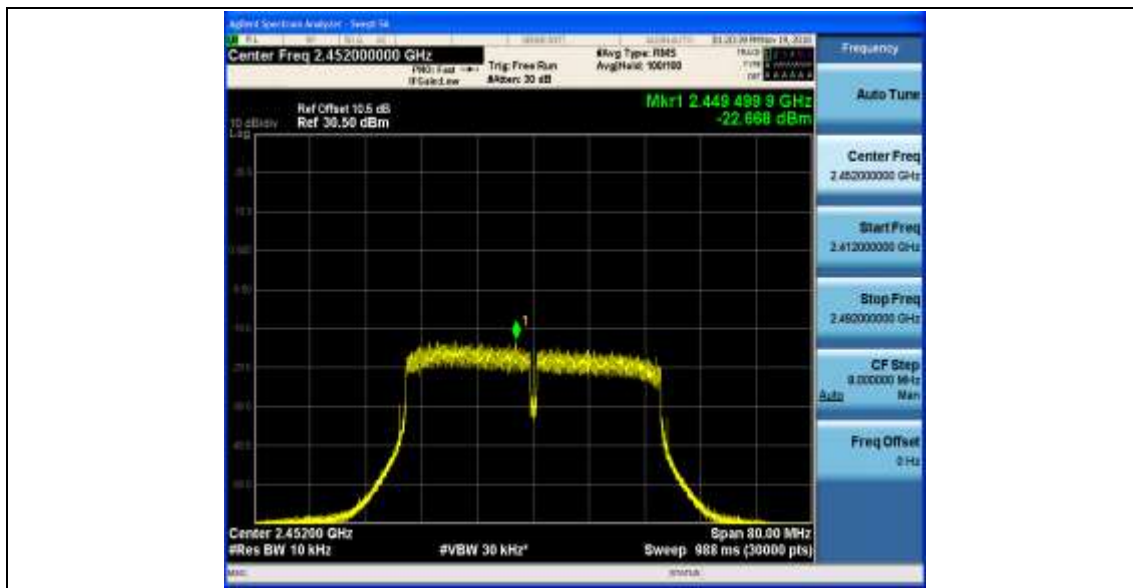


11N40SISO\_Ant1\_2442



11N40SISO\_Ant1\_2452





## Appendix F: Band edge measurements

### Test Result

TestMode	Antenna	ChName	Channel	RefLevel[dBm]	Result[dBm]	Limit[dBm]	Verdict
11B	Ant1	Low	2412	8.46	-32.25	-21.54	PASS
		High	2462	8.15	-50.08	-21.85	PASS
11G	Ant1	Low	2412	-1.66	-39.36	-31.66	PASS
			2417	1.08	-39.81	-28.92	PASS
			2422	4.27	-36.56	-25.73	PASS
		High	2452	2.32	-51.86	-27.68	PASS
			2457	1.17	-52.03	-28.83	PASS
			2462	0.91	-48.56	-29.09	PASS
11N20SISO	Ant1	Low	2412	-1.16	-39	-31.16	PASS
			2417	1.26	-38.28	-28.74	PASS
			2422	4.44	-36.25	-25.56	PASS
		High	2452	3.09	-51.5	-26.91	PASS
			2457	1.90	-50.99	-28.1	PASS
			2462	0.49	-48.86	-29.51	PASS
11N40SISO	Ant1	Low	2422	-5.57	-37.72	-35.57	PASS
			2427	-4.58	-41.95	-34.58	PASS
			2432	-3.17	-40.49	-33.17	PASS
		High	2442	-3.26	-49.94	-33.26	PASS
			2447	-2.36	-46	-32.36	PASS
			2452	-5.10	-49.73	-35.1	PASS



### Test Graphs

11B\_Ant1\_Low\_2412



11B\_Ant1\_High\_2462



11G\_Ant1\_Low\_2412



11G\_Ant1\_Low\_2417



11G\_Ant1\_Low\_2422



11G\_Ant1\_High\_2452



11G\_Ant1\_High\_2457



11G\_Ant1\_High\_2462



11N20SISO\_Ant1\_Low\_2412





11N20SISO\_Ant1\_Low\_2417



11N20SISO\_Ant1\_Low\_2422



11N20SISO\_Ant1\_High\_2452



11N20SISO\_Ant1\_High\_2457



11N20SISO\_Ant1\_High\_2462



11N40SISO\_Ant1\_Low\_2422



11N40SISO\_Ant1\_Low\_2427



11N40SISO\_Ant1\_Low\_2432



11N40SISO\_Ant1\_High\_2442



11N40SISO\_Ant1\_High\_2447





11N40SISO\_Ant1\_High\_2452





## Appendix G: Unwanted Emissions into Non-Restricted Frequency Bands

### Test Result

TestMode	Antenna	Channel	FreqRange	RefLevel[dBm]	Result[dBm]	Limit[dBm]	Verdict
11B	Ant1	2412	Reference	8.41	8.41	---	PASS
			0.009~30	0.009~30	-74.41	-31.59	PASS
			30~1000	30~1000	-63.11	-21.59	PASS
			1000~26500	1000~26500	-38.2	-21.59	PASS
		2437	Reference	7.84	7.84	---	PASS
			0.009~30	0.009~30	-74.63	-32.16	PASS
			30~1000	30~1000	-63.46	-22.16	PASS
			1000~26500	1000~26500	-37.3	-22.16	PASS
		2462	Reference	8.35	8.35	---	PASS
			0.009~30	0.009~30	-75.03	-31.65	PASS
			30~1000	30~1000	-62.78	-21.65	PASS
			1000~26500	1000~26500	-38.08	-21.65	PASS
11G	Ant1	2412	Reference	-1.44	-1.44	---	PASS
			0.009~30	0.009~30	-74.45	-41.44	PASS
			30~1000	30~1000	-63.14	-31.44	PASS
			1000~26500	1000~26500	-37.08	-31.44	PASS
		2417	Reference	1.38	1.38	---	PASS
			0.009~30	0.009~30	-74.77	-38.62	PASS
			30~1000	30~1000	-63.01	-28.62	PASS
			1000~26500	1000~26500	-37.03	-28.62	PASS
		2422	Reference	2.92	2.92	---	PASS
			0.009~30	0.009~30	-74.36	-37.08	PASS
			30~1000	30~1000	-61.7	-27.08	PASS
			1000~26500	1000~26500	-36.82	-27.08	PASS



		2437	Reference	2.37	2.37	---	PASS
			0.009~30	0.009~30	-74.21	-37.63	PASS
			30~1000	30~1000	-62.74	-27.63	PASS
			1000~2650 0	1000~26500	-37.82	-27.63	PASS
		2452	Reference	2.62	2.62	---	PASS
			0.009~30	0.009~30	-75.16	-37.38	PASS
			30~1000	30~1000	-62.55	-27.38	PASS
			1000~2650 0	1000~26500	-37.91	-27.38	PASS
		2457	Reference	1.30	1.30	---	PASS
			0.009~30	0.009~30	-74	-38.7	PASS
			30~1000	30~1000	-63.39	-28.7	PASS
			1000~2650 0	1000~26500	-37.67	-28.7	PASS
		2462	Reference	0.84	0.84	---	PASS
			0.009~30	0.009~30	-74.15	-39.16	PASS
			30~1000	30~1000	-62.94	-29.16	PASS
			1000~2650 0	1000~26500	-37.34	-29.16	PASS
11N20SIS O	Ant1	2412	Reference	-1.38	-1.38	---	PASS
			0.009~30	0.009~30	-75.31	-41.38	PASS
			30~1000	30~1000	-63.38	-31.38	PASS
			1000~2650 0	1000~26500	-37.13	-31.38	PASS
		2417	Reference	0.63	0.63	---	PASS
			0.009~30	0.009~30	-74.94	-39.37	PASS
			30~1000	30~1000	-62.47	-29.37	PASS
			1000~2650 0	1000~26500	-38.16	-29.37	PASS
		2422	Reference	2.48	2.48	---	PASS
			0.009~30	0.009~30	-74.74	-37.52	PASS
			30~1000	30~1000	-63.46	-27.52	PASS
			1000~2650 0	1000~26500	-37.44	-27.52	PASS
		2437	Reference	2.07	2.07	---	PASS
			0.009~30	0.009~30	-74.78	-37.93	PASS
			30~1000	30~1000	-62.12	-27.93	PASS

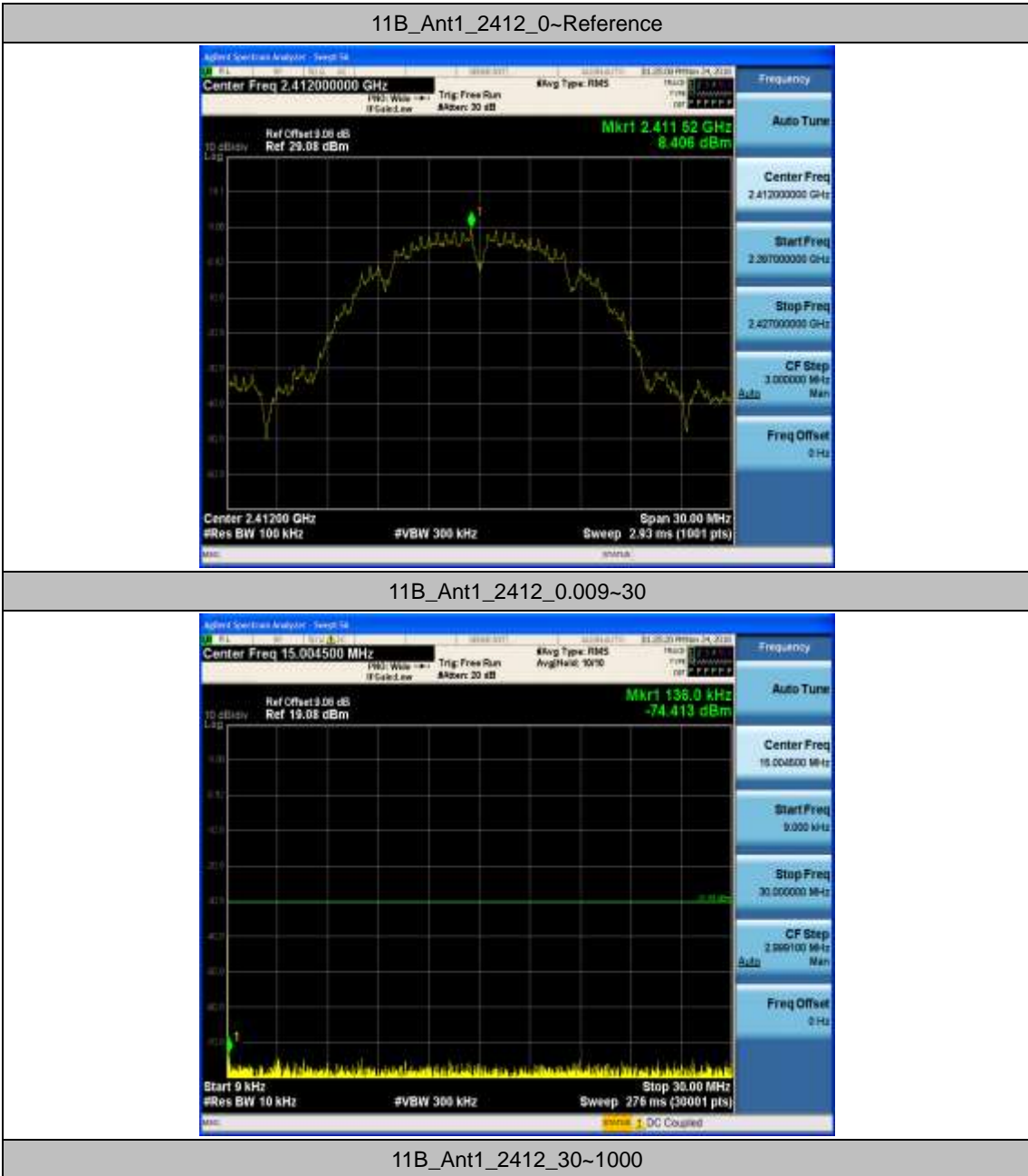


		2452	1000~2650 0	1000~26500	-37.22	-27.93	PASS		
			Reference	3.35	3.35	---	PASS		
			0.009~30	0.009~30	-74.02	-36.65	PASS		
			30~1000	30~1000	-62.63	-26.65	PASS		
		2457	1000~2650 0	1000~26500	-37.79	-26.65	PASS		
			Reference	1.44	1.44	---	PASS		
			0.009~30	0.009~30	-73.74	-38.56	PASS		
			30~1000	30~1000	-62.52	-28.56	PASS		
		2462	1000~2650 0	1000~26500	-37.33	-28.56	PASS		
			Reference	0.11	0.11	---	PASS		
			0.009~30	0.009~30	-75.02	-39.89	PASS		
			30~1000	30~1000	-63.03	-29.89	PASS		
		11N40SIS O	Ant1	2422	Reference	-5.74	-5.74	---	PASS
					0.009~30	0.009~30	-74.84	-45.74	PASS
					30~1000	30~1000	-63.06	-35.74	PASS
					1000~2650 0	1000~26500	-37.33	-35.74	PASS
2427	Reference			-4.55	-4.55	---	PASS		
	0.009~30			0.009~30	-74.87	-44.55	PASS		
	30~1000			30~1000	-63.05	-34.55	PASS		
	1000~2650 0			1000~26500	-37.34	-34.55	PASS		
2432	Reference			-3.15	-3.15	---	PASS		
	0.009~30			0.009~30	-75.13	-43.15	PASS		
	30~1000			30~1000	-62.92	-33.15	PASS		
	1000~2650 0			1000~26500	-37.57	-33.15	PASS		
2437	Reference			-2.71	-2.71	---	PASS		
	0.009~30			0.009~30	-74.9	-42.71	PASS		
	30~1000			30~1000	-62.81	-32.71	PASS		
	1000~2650 0			1000~26500	-37.72	-32.71	PASS		
2442	Reference	-2.35	-2.35	---	PASS				



			0.009~30	0.009~30	-74.59	-42.35	PASS
			30~1000	30~1000	-62.92	-32.35	PASS
			1000~2650 0	1000~26500	-37.87	-32.35	PASS
		2447	Reference	-4.69	-4.69	---	PASS
			0.009~30	0.009~30	-74.56	-44.69	PASS
			30~1000	30~1000	-62.67	-34.69	PASS
			1000~2650 0	1000~26500	-37.36	-34.69	PASS
		2452	Reference	-5.10	-5.10	---	PASS
			0.009~30	0.009~30	-74.83	-45.1	PASS
			30~1000	30~1000	-62.97	-35.1	PASS
			1000~2650 0	1000~26500	-36.65	-35.1	PASS

### Test Graphs





11B\_Ant1\_2412\_1000~26500



11B\_Ant1\_2437\_0~Reference

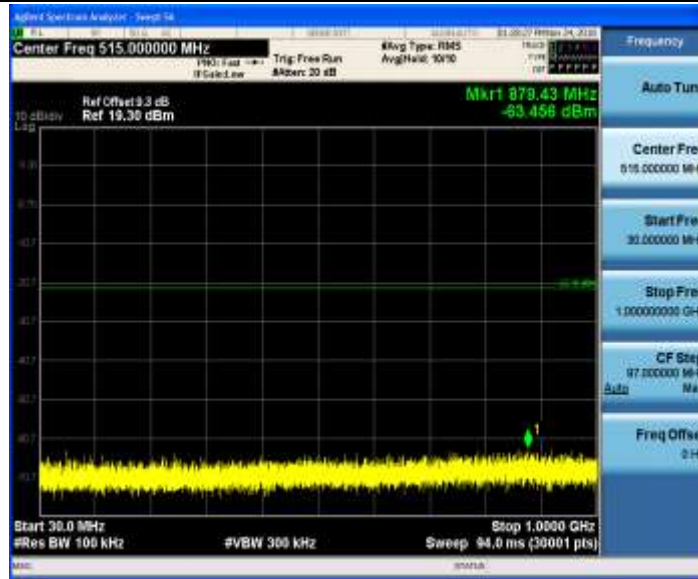




11B\_Ant1\_2437\_0.009~30



11B\_Ant1\_2437\_30~1000



11B\_Ant1\_2437\_1000~26500



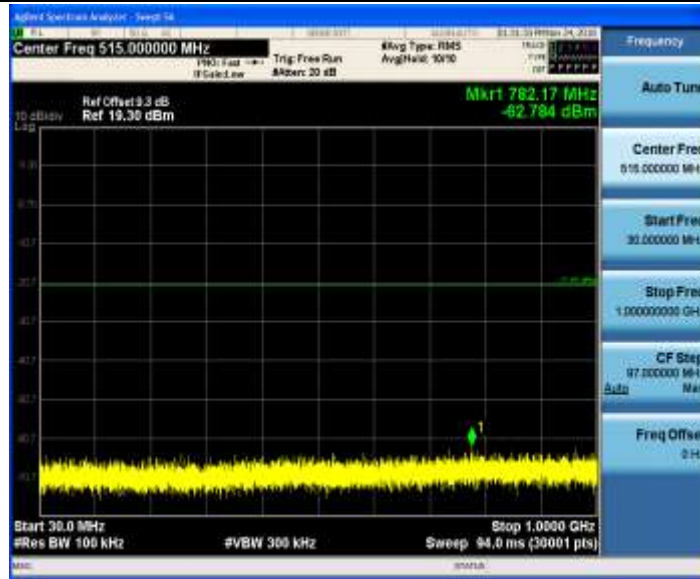
11B\_Ant1\_2462\_0~Reference



11B\_Ant1\_2462\_0.009~30



11B\_Ant1\_2462\_30~1000



11B\_Ant1\_2462\_1000~26500



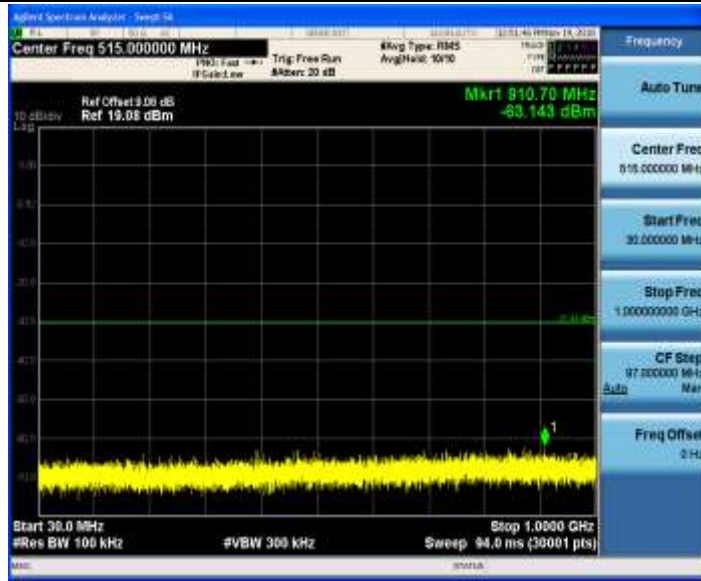
11G\_Ant1\_2412\_0~Reference



11G\_Ant1\_2412\_0.009~30



11G\_Ant1\_2412\_30~1000



11G\_Ant1\_2412\_1000~26500



11G\_Ant1\_2417\_0~Reference

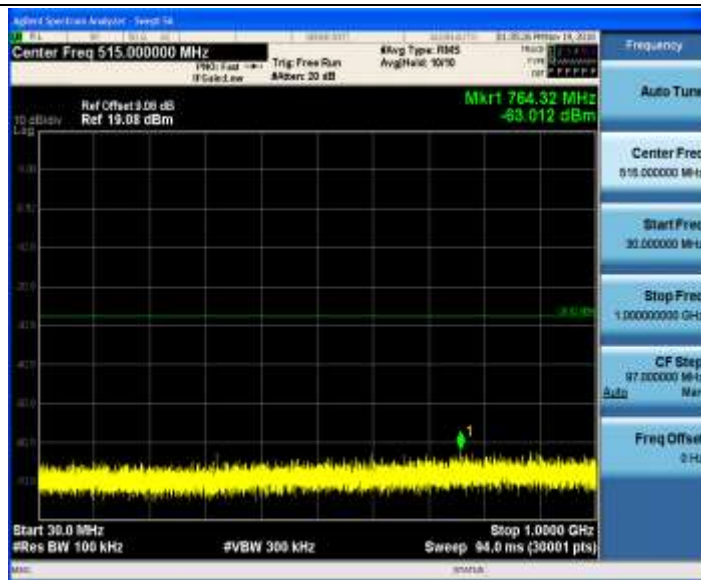




11G\_Ant1\_2417\_0.009~30



11G\_Ant1\_2417\_30~1000



11G\_Ant1\_2417\_1000~26500



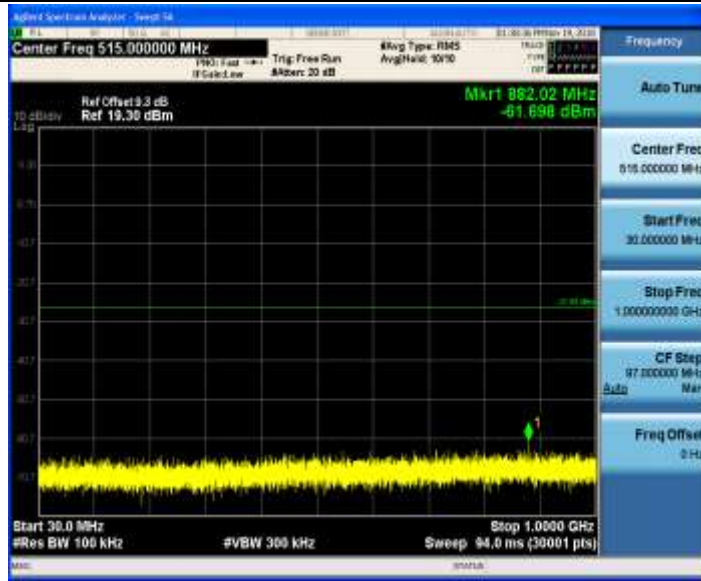
11G\_Ant1\_2422\_0~Reference



11G\_Ant1\_2422\_0.009~30



11G\_Ant1\_2422\_30~1000



11G\_Ant1\_2422\_1000~26500



11G\_Ant1\_2437\_0~Reference



11G\_Ant1\_2437\_0.009~30



11G\_Ant1\_2437\_30~1000



11G\_Ant1\_2437\_1000~26500



11G\_Ant1\_2452\_0~Reference

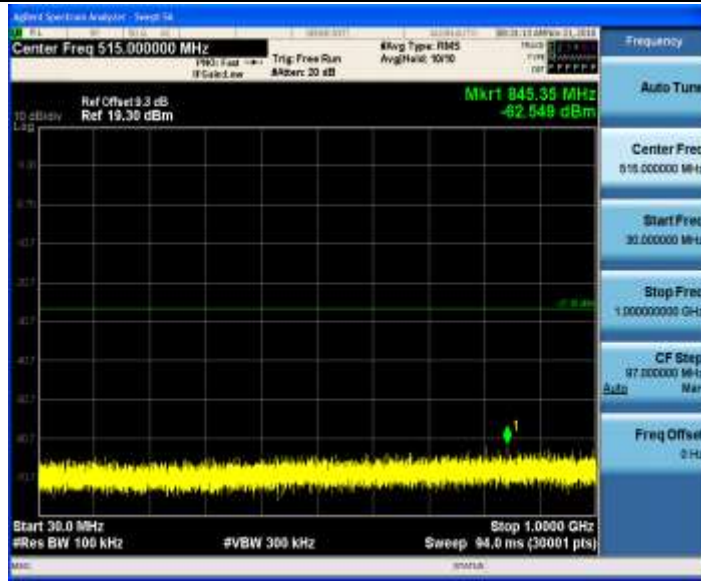




11G\_Ant1\_2452\_0.009~30



11G\_Ant1\_2452\_30~1000



11G\_Ant1\_2452\_1000~26500



11G\_Ant1\_2457\_0~Reference



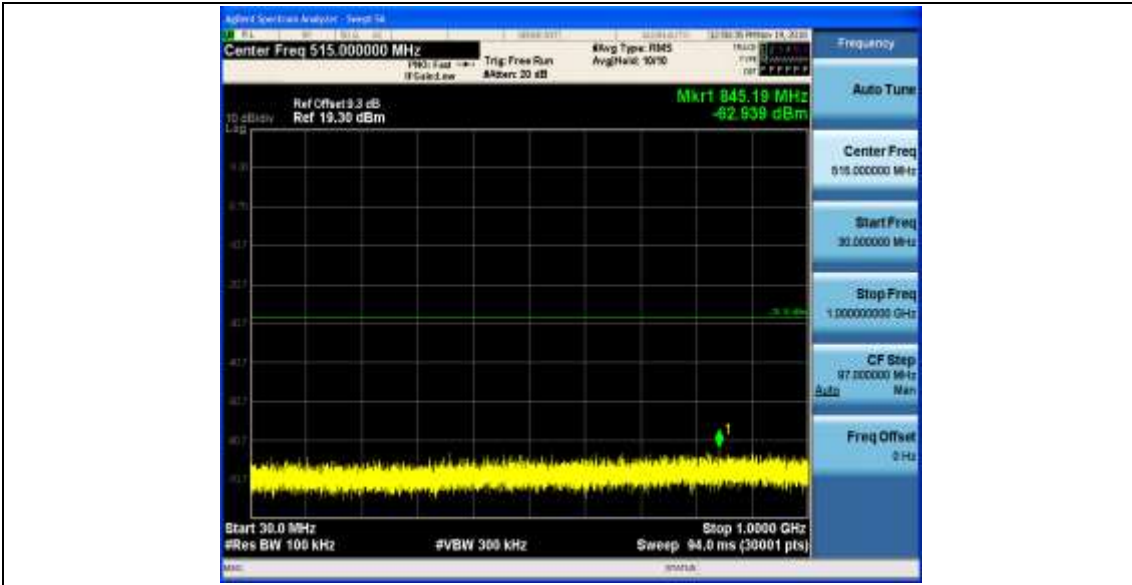


11G\_Ant1\_2457\_1000~26500



11G\_Ant1\_2462\_0~Reference





11G\_Ant1\_2462\_1000~26500



11N20SISO\_Ant1\_2412\_0~Reference

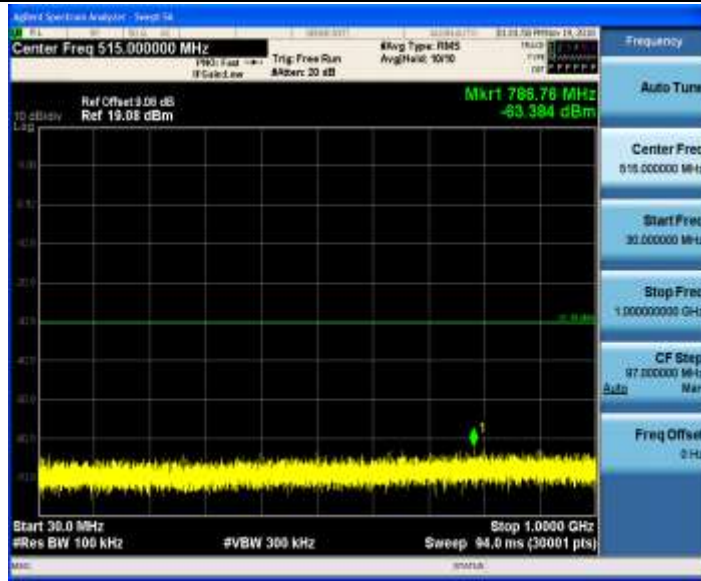




11N20SISO\_Ant1\_2412\_0.009~30



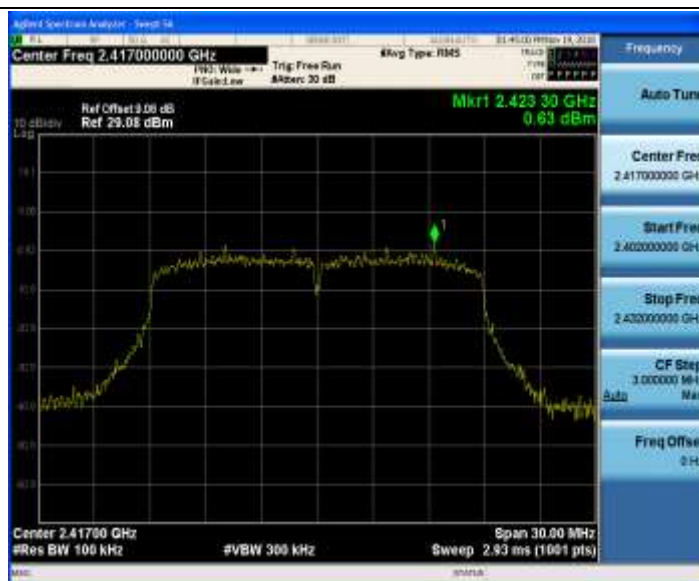
11N20SISO\_Ant1\_2412\_30~1000



11N20SISO\_Ant1\_2412\_1000~26500



11N20SISO\_Ant1\_2417\_0~Reference



11N20SISO\_Ant1\_2417\_0.009~30



11N20SISO\_Ant1\_2417\_30~1000



11N20SISO\_Ant1\_2417\_1000~26500



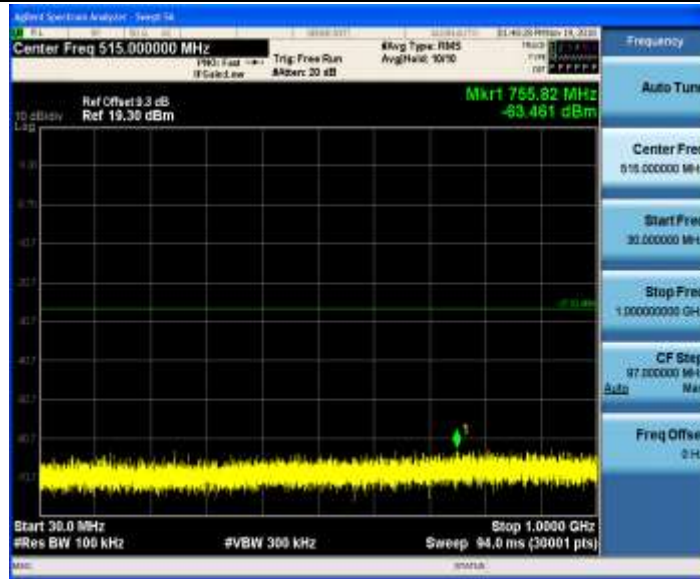
11N20SISO\_Ant1\_2422\_0~Reference



11N20SISO\_Ant1\_2422\_0.009~30



11N20SISO\_Ant1\_2422\_30~1000



11N20SISO\_Ant1\_2422\_1000~26500



11N20SISO\_Ant1\_2437\_0~Reference

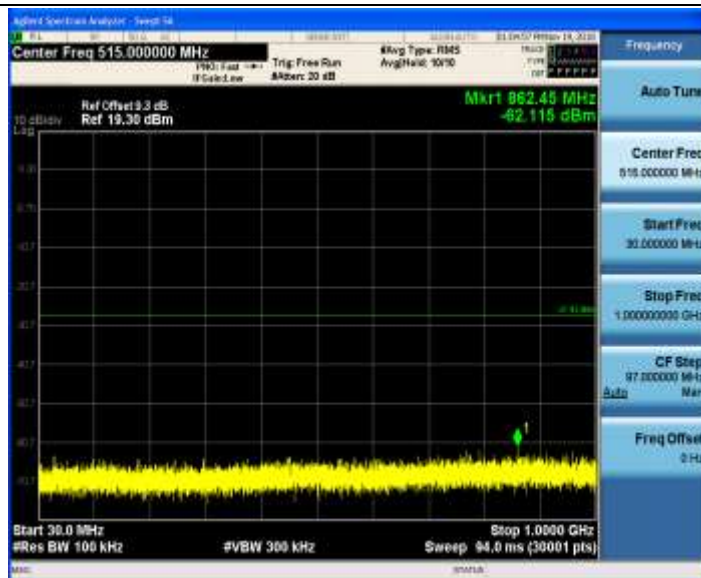




11N20SISO\_Ant1\_2437\_0.009~30



11N20SISO\_Ant1\_2437\_30~1000



11N20SISO\_Ant1\_2437\_1000~26500



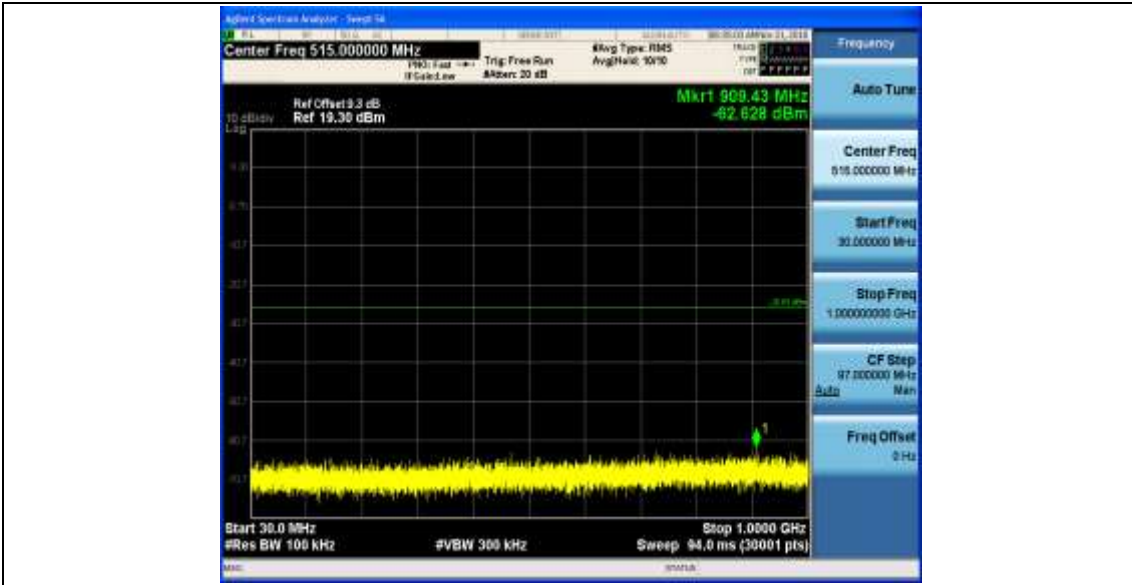
11N20SISO\_Ant1\_2452\_0~Reference



11N20SISO\_Ant1\_2452\_0.009~30



11N20SISO\_Ant1\_2452\_30~1000



11N20SISO\_Ant1\_2452\_1000~26500



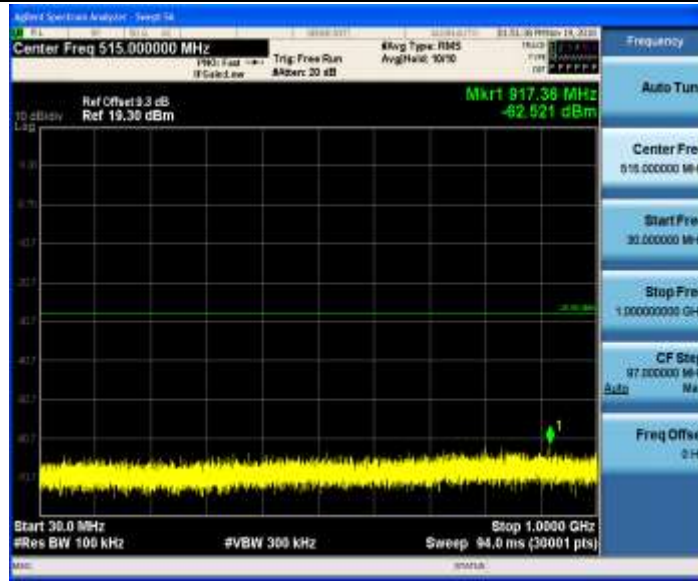
11N20SISO\_Ant1\_2457\_0~Reference



11N20SISO\_Ant1\_2457\_0.009~30



11N20SISO\_Ant1\_2457\_30~1000



11N20SISO\_Ant1\_2457\_1000~26500



11N20SISO\_Ant1\_2462\_0~Reference

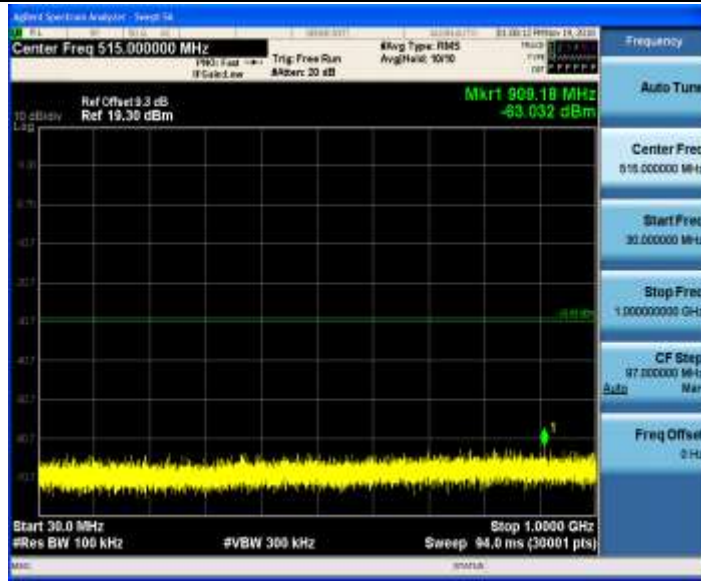




11N20SISO\_Ant1\_2462\_0.009~30



11N20SISO\_Ant1\_2462\_30~1000



11N20SISO\_Ant1\_2462\_1000~26500



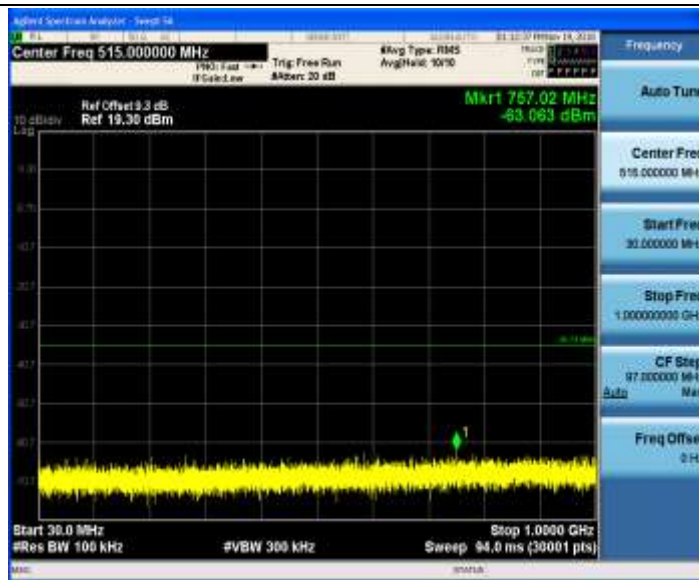
11N40SISO\_Ant1\_2422\_0~Reference



11N40SISO\_Ant1\_2422\_0.009~30



11N40SISO\_Ant1\_2422\_30~1000



11N40SISO\_Ant1\_2422\_1000~26500



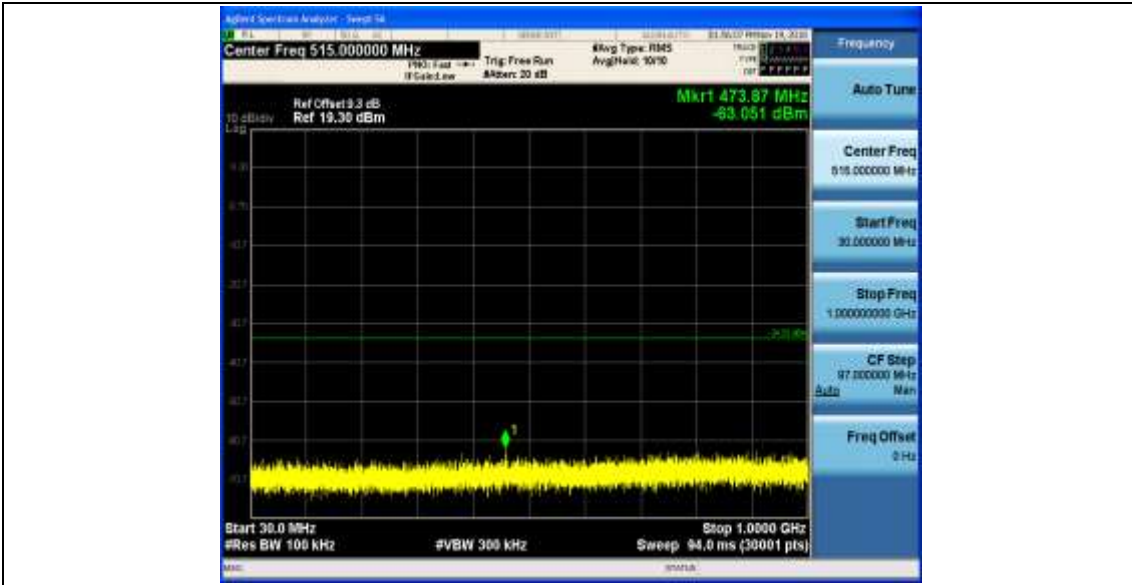
11N40SISO\_Ant1\_2427\_0~Reference



11N40SISO\_Ant1\_2427\_0.009~30



11N40SISO\_Ant1\_2427\_30~1000



11N40SISO\_Ant1\_2427\_1000~26500



11N40SISO\_Ant1\_2432\_0~Reference

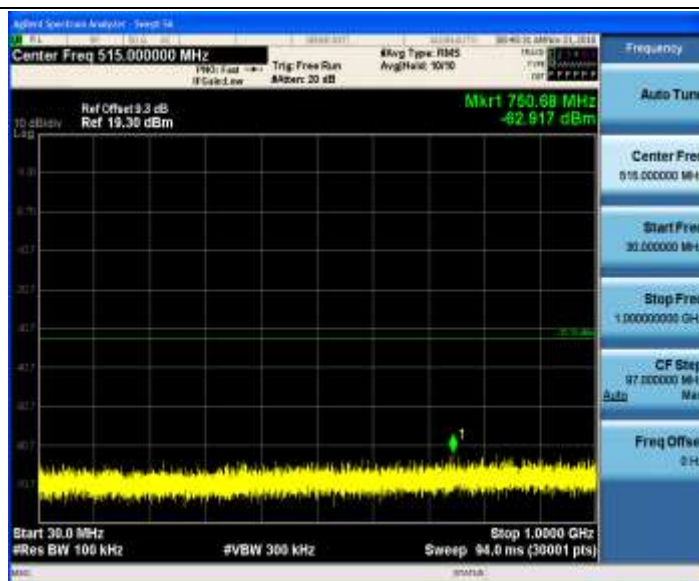




11N40SISO\_Ant1\_2432\_0.009~30



11N40SISO\_Ant1\_2432\_30~1000



11N40SISO\_Ant1\_2432\_1000~26500



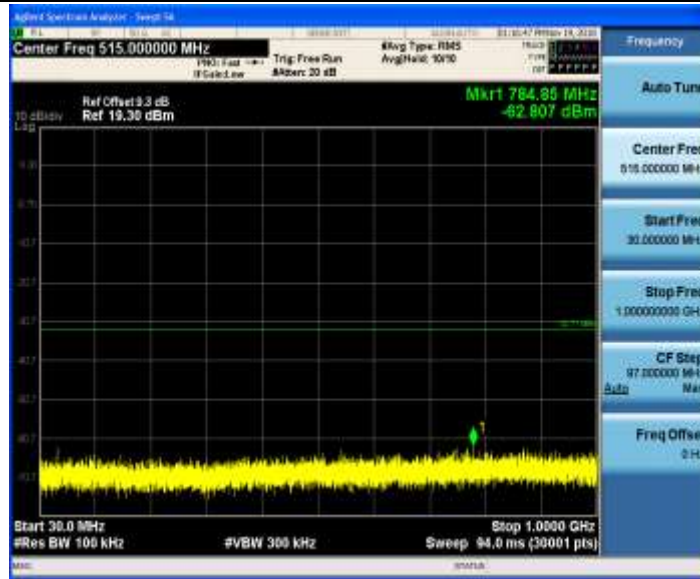
11N40SISO\_Ant1\_2437\_0~Reference



11N40SISO\_Ant1\_2437\_0.009~30



11N40SISO\_Ant1\_2437\_30~1000



11N40SISO\_Ant1\_2437\_1000~26500



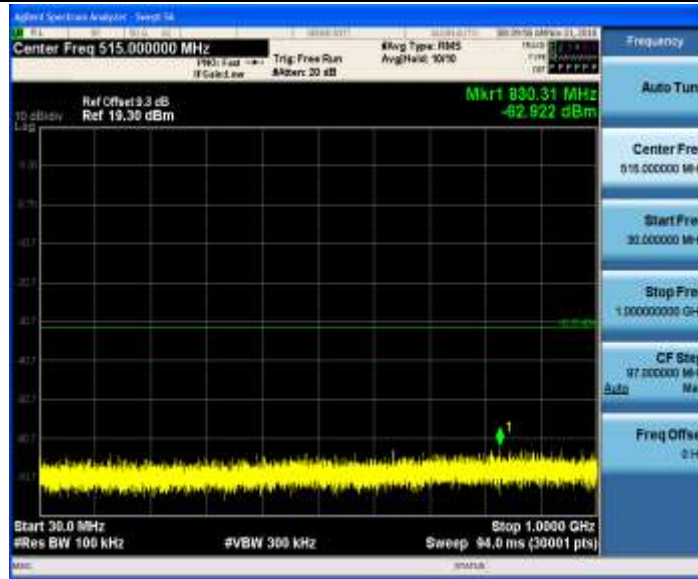
11N40SISO\_Ant1\_2442\_0~Reference



11N40SISO\_Ant1\_2442\_0.009~30



11N40SISO\_Ant1\_2442\_30~1000



11N40SISO\_Ant1\_2442\_1000~26500



11N40SISO\_Ant1\_2447\_0~Reference





11N40SISO\_Ant1\_2447\_0.009~30



11N40SISO\_Ant1\_2447\_30~1000



11N40SISO\_Ant1\_2447\_1000~26500



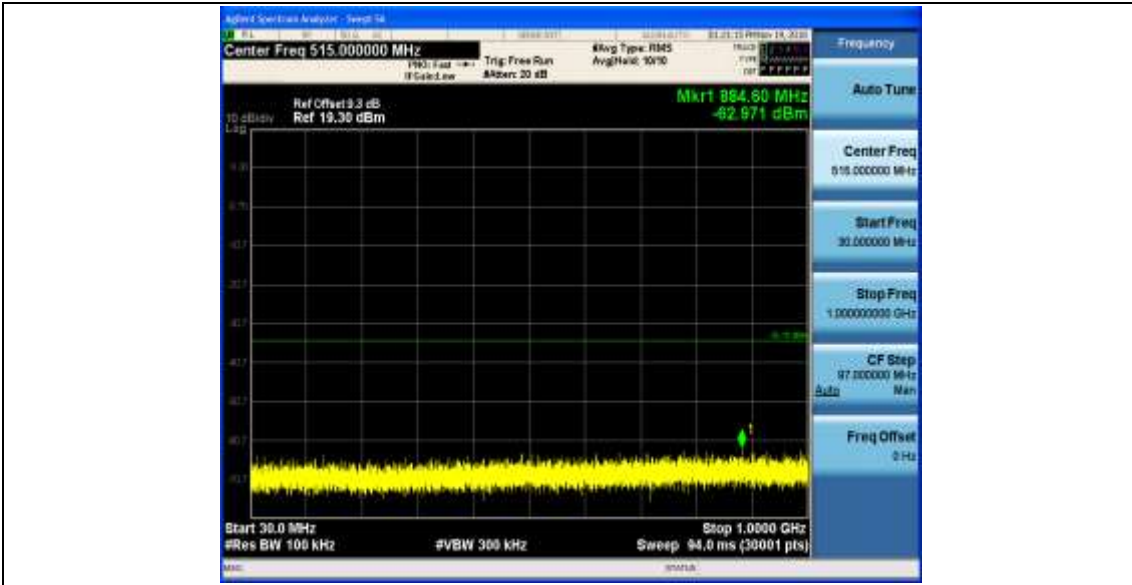
11N40SISO\_Ant1\_2452\_0~Reference



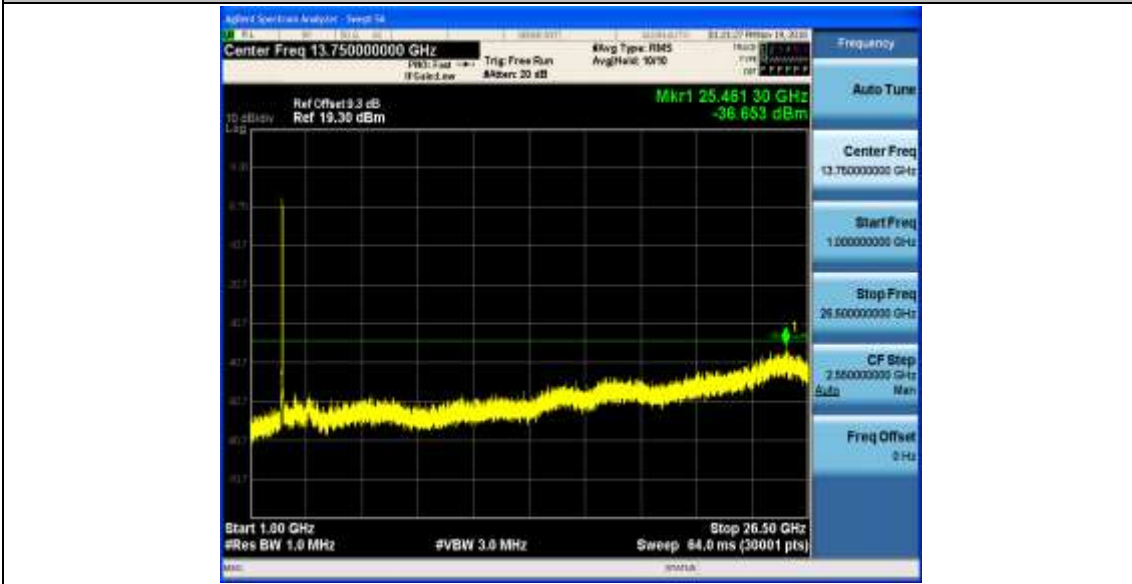
11N40SISO\_Ant1\_2452\_0.009~30



11N40SISO\_Ant1\_2452\_30~1000



11N40SISO\_Ant1\_2452\_1000~26500



END